



iPhone Intune enrollment iOS 26 user guide

Overview

This guide shows how to enroll an iPhone iOS 26 into Intune.

Procedure

Step 1. Swipe to open.



Step 2. Select English.



Step 3. Select United States.



Step 4. Select Continue.



Step 5. Select Set up without Another Device.



Step 6. Choose a Wi-Fi network. Use **oklahoma_open** if it is available. If you do not have access to **oklahoma_open**, you can use a personal Wi-Fi network or continue without using Wi-Fi. Enter in a Wi-Fi password if needed.



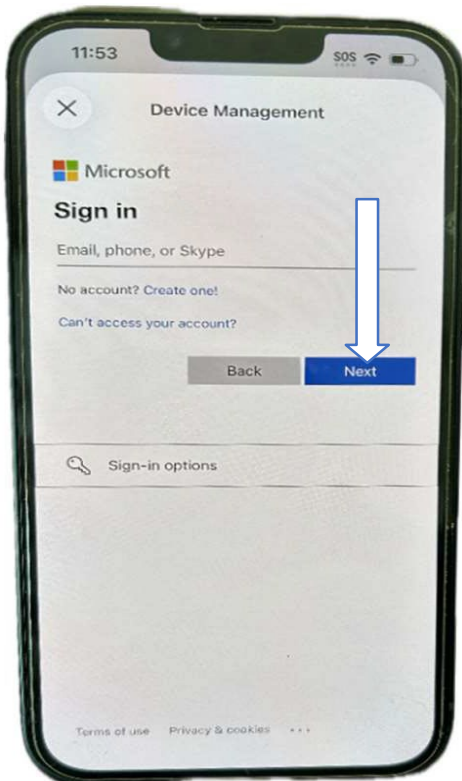
Step 7. The device is now activating.



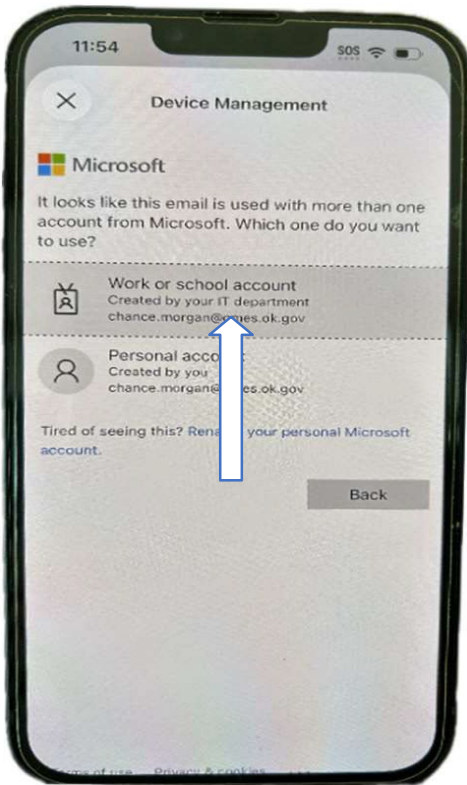
Step 8. Select Enroll this phone



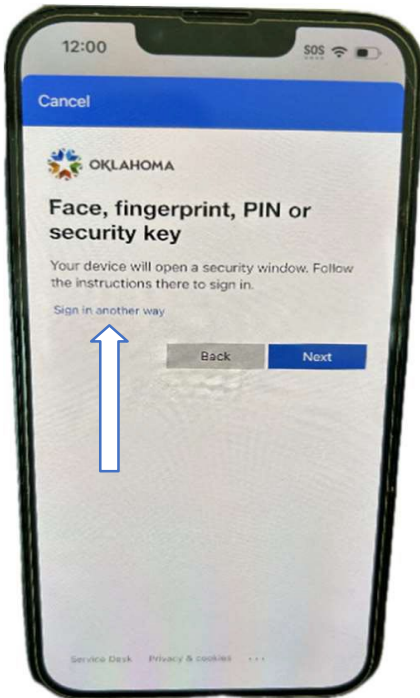
Step 9. Enter your Workday login information. Then select Next.



Step 10. Select Work or school account.



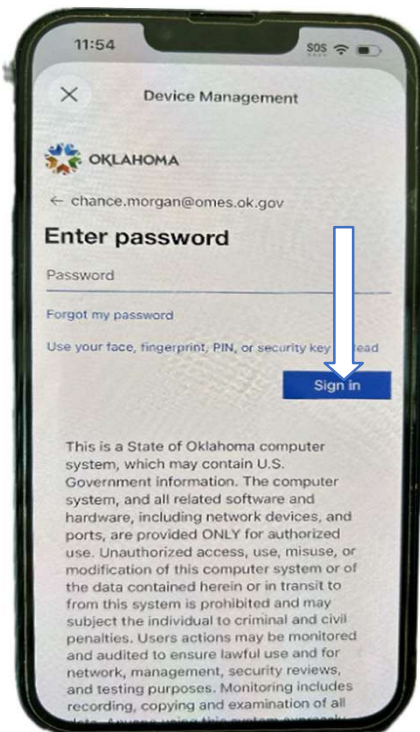
Step 11. If you see the screen below, select Sign in another way.



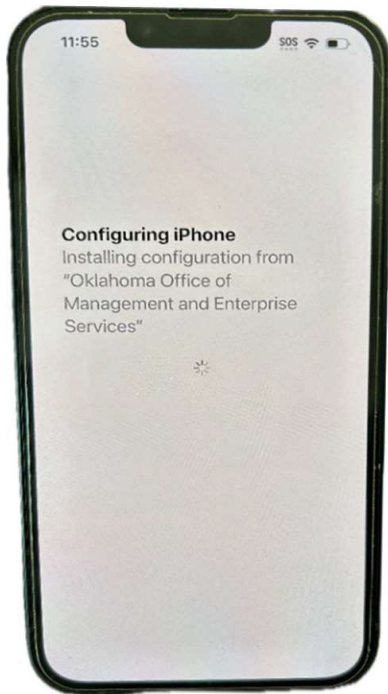
Step 12. Verify with MFA (multi-factor authentication).



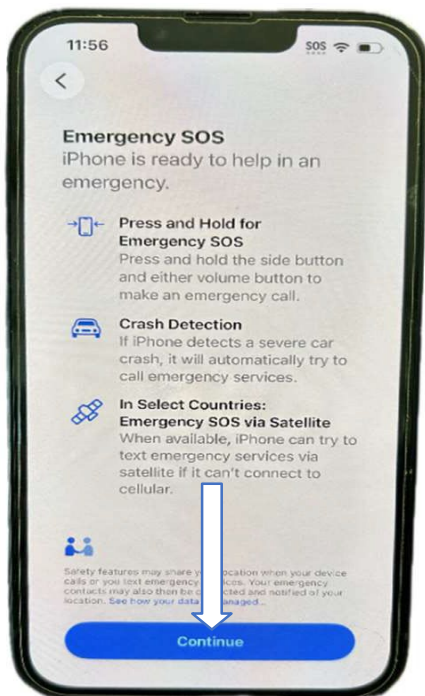
Step 13. Enter your Workday password, and then select **Sign in**.



Step 14. The iPhone is now configuring.



Step 15. Select **Continue**.



Step 16. The device will open to the home screen. Wait a moment for the Passcode Requirement box to pop up. Select **Change Now**.



Step 17. Enter an eight-character numeric or alphanumeric passcode. Then select **Continue**.



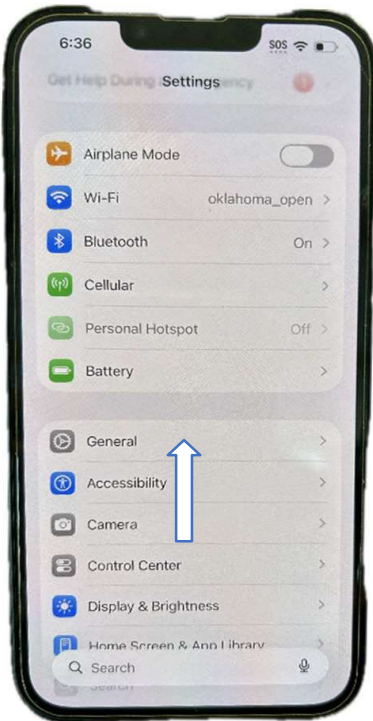
Step 18. Re-enter your passcode and then select **Set Passcode**.



Step 19. Select the **Settings** app.



Step 20. Scroll down and select **General**.



Step 21. Select **Software Update**.



Step 22. If the device is already on the most current operating system, you can continue to the next step. If the device is behind on updates, connect to Wi-Fi and a power cable and then proceed with the update. Once completed, close the Settings app.



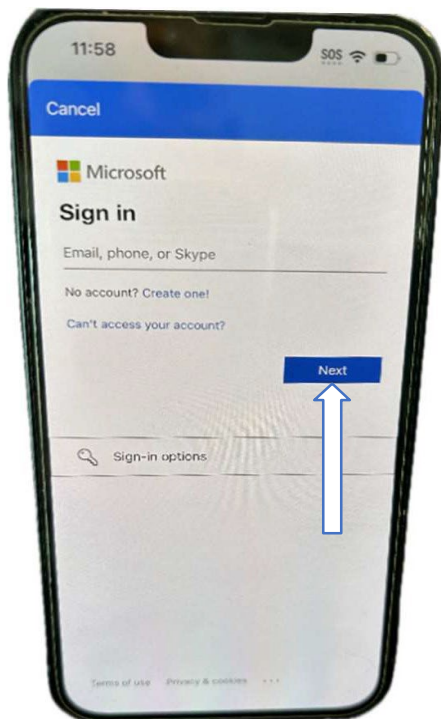
Step 23. Select the **Company Portal** app.



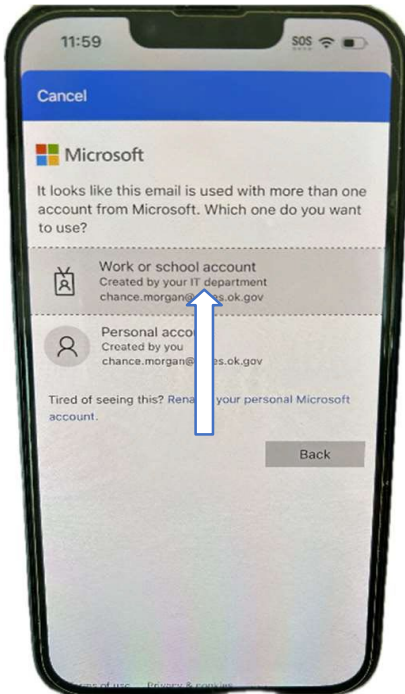
Step 24. Select **Sign in**.



Step 25. Enter your Workday login information. Then select **Next**.



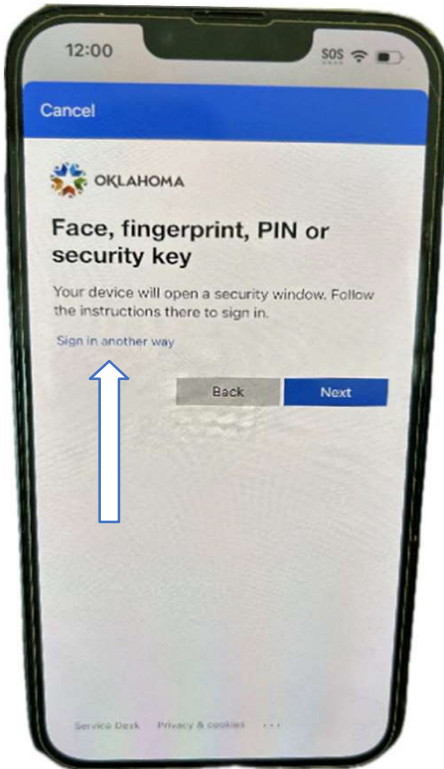
Step 26. Select Work or school account.



Step 27. Enter your Workday password, and then select Sign in.



Step 28. If you see the following screen, select **Sign in another way**.



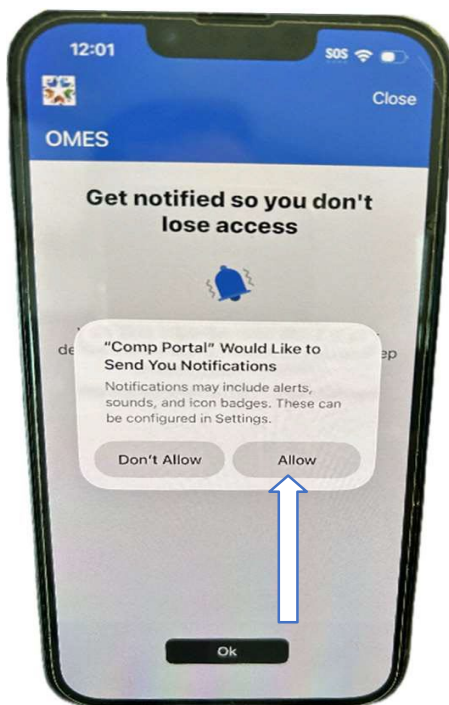
Step 29. Enter your MFA.



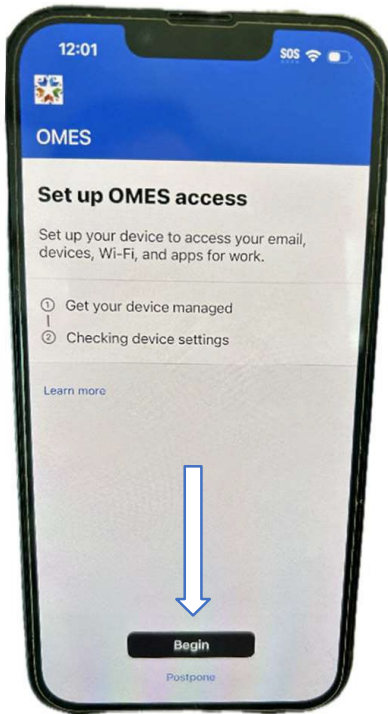
Step 30. Select OK.



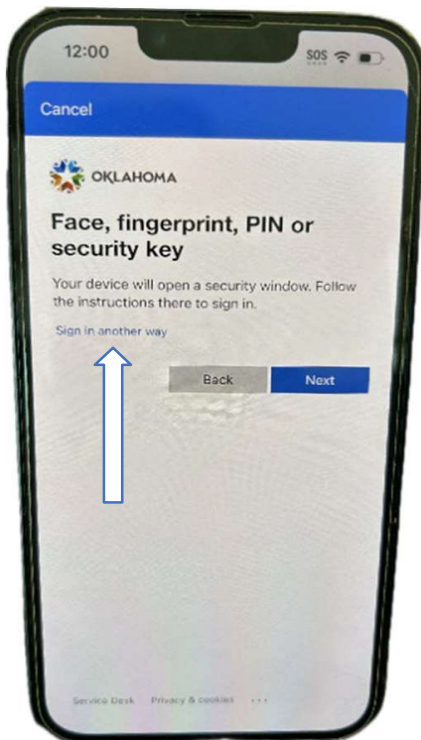
Step 31. Select Allow.



Step 32. Select **Begin**.



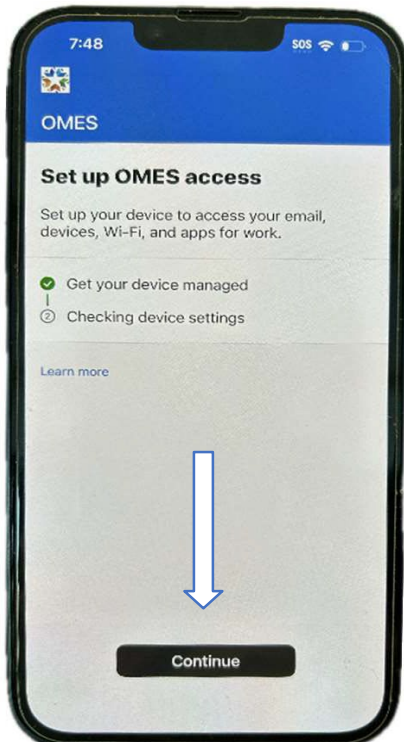
Step 33. If you see the screen below, select **Sign in another way**.



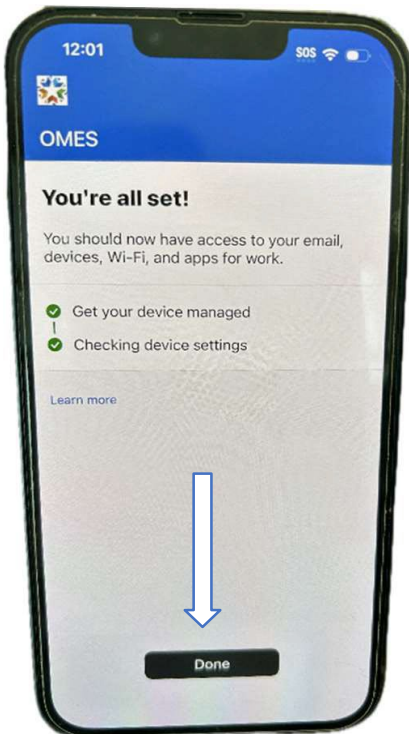
Step 34. Enter your MFA.



Step 35. Select Continue.



Step 36. Select **Done**.



Step 37. The device is now enrolled.

