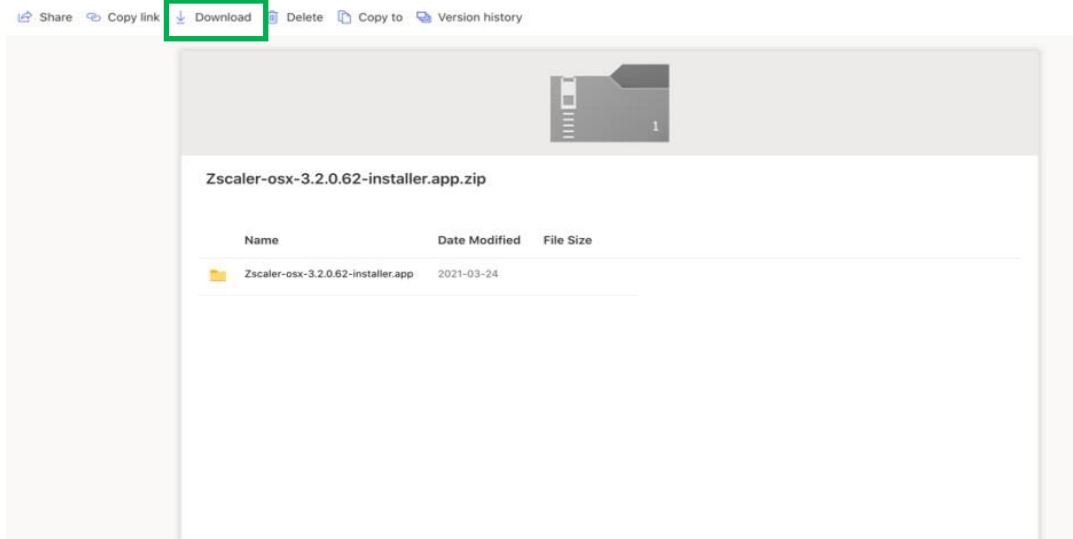




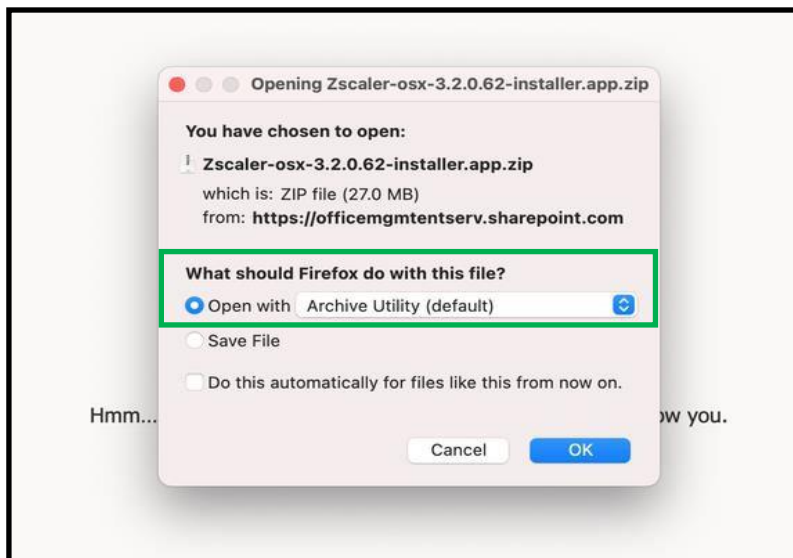
OKLAHOMA Office of Management & Enterprise Services

Zscaler for Mac Resource Guide

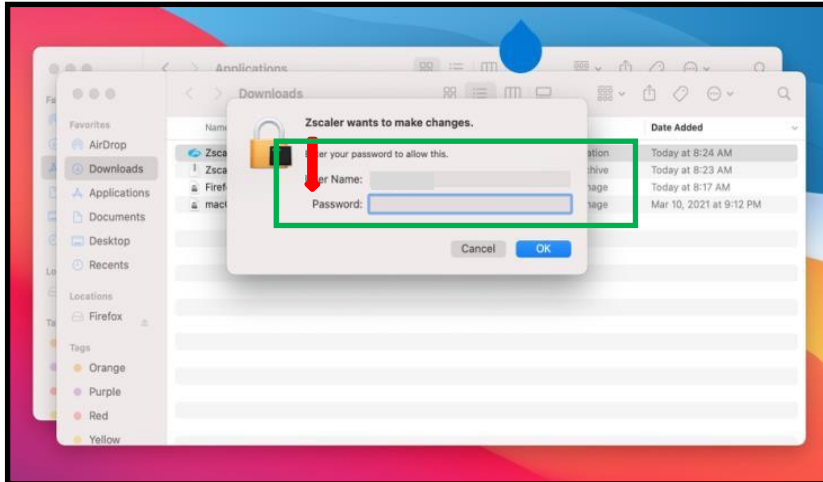
1. Select [this Zscaler for Mac Resource Guide link](#) to begin the download process.
2. Select **Download** from the menu at the top.



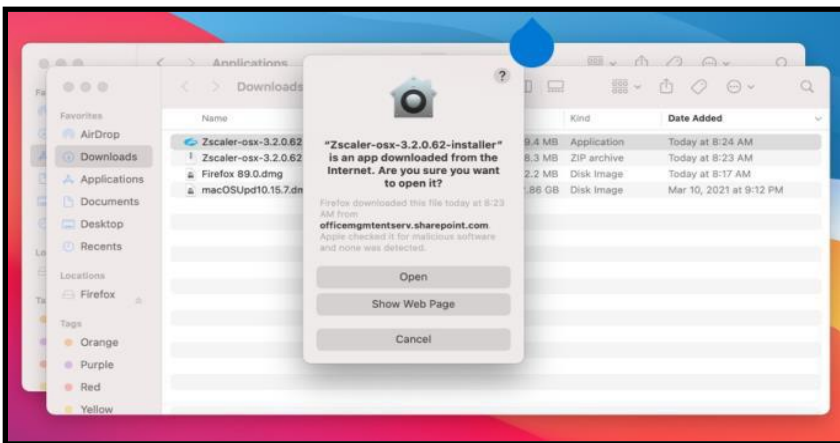
3. Select **Open with Archive Utility (default)** to open the Zscaler.zip file.



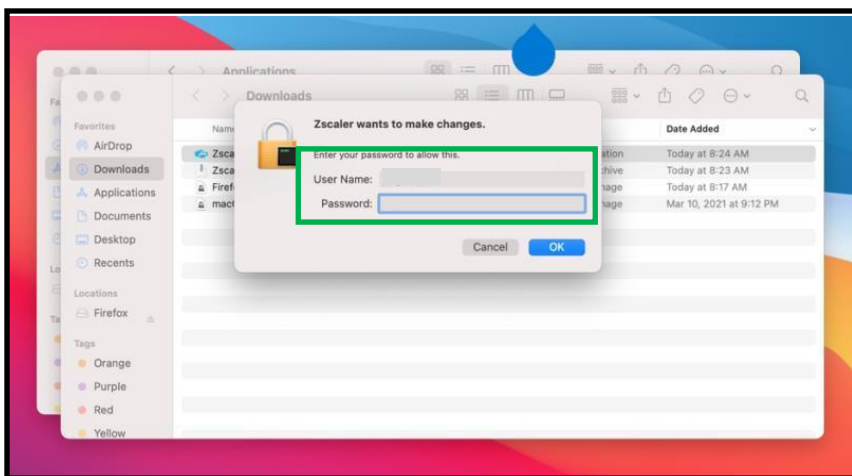
4. After the Downloads folder opens, select the Zscaler installer and enter your admin credentials. If you do not have admin credentials to your Mac, contact the OMES Service Desk by [email](#) or phone 405-521-2444.



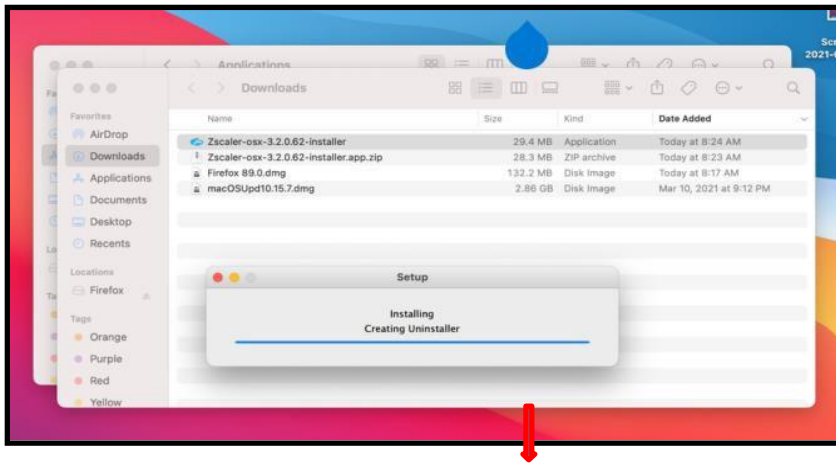
5. The prompt asks if you are sure you want to open the Zscaler installer app. Select **Open**.



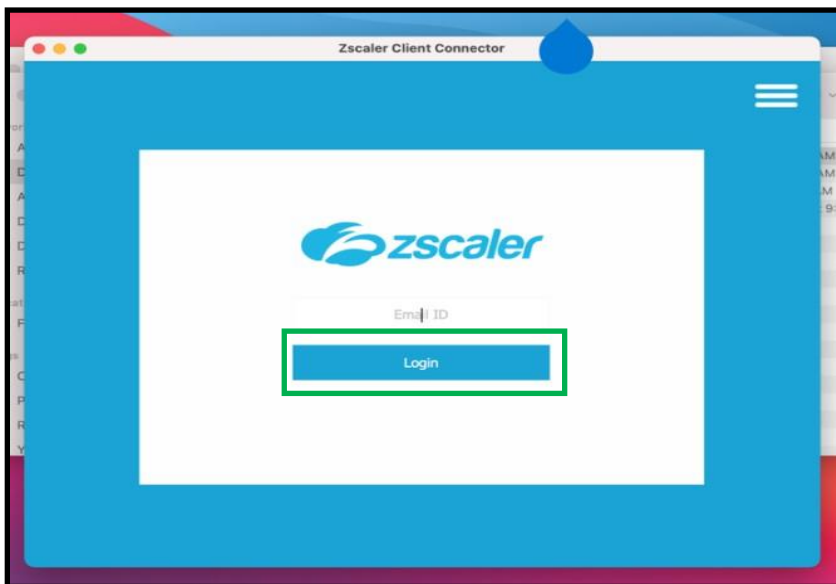
6. Enter your admin username and password then select OK. If you do not have admin credentials to your Mac, contact the Service Desk by [email](#) or phone (405-521-2444).



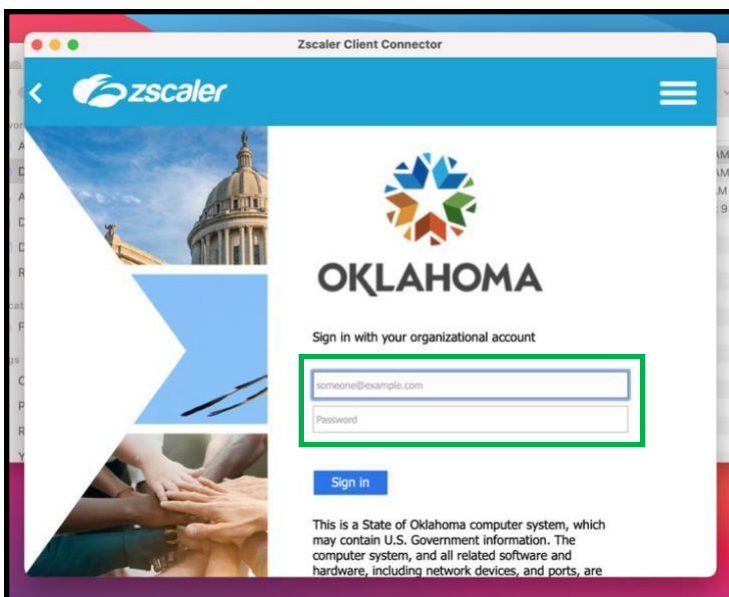
7. The download will begin.



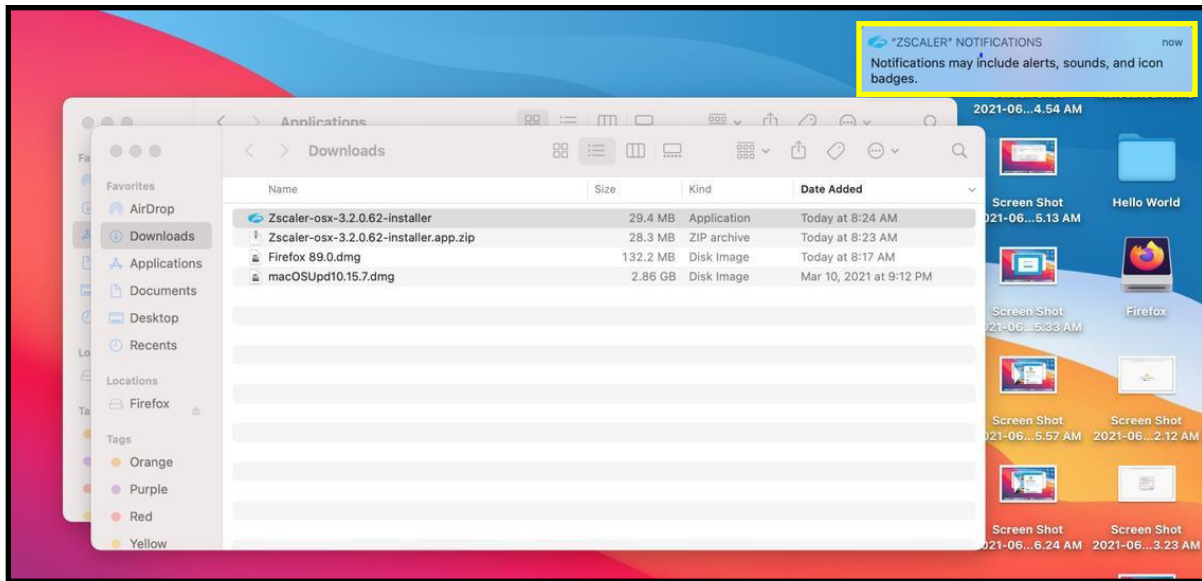
8. Log in using your Office 365 credentials.



9. You will be prompted to log in again with your Office 365 credentials.



10. A Zscaler notification confirming you may receive alerts will appear.



To confirm you are logged into Zscaler, select this icon to view your connectivity status and other details.

