



**OKLAHOMA**  
Office of Management  
& Enterprise Services

**Contact:**

Brandon Ramirez

OFFICE OF MANAGEMENT  
AND ENTERPRISE SERVICES

Phone: 580-471-3153

Email: [brandon.ramirez@omes.ok.gov](mailto:brandon.ramirez@omes.ok.gov)



## M.C. CONNERS BUILDING

The M.C. Connors building is a five-story office building with visitor's lobby overlooking the Capitol Complex park. The building is within walking distance of the State Capitol. The building includes three shared conference rooms on the fourth floor as well as a skywalk over Lincoln Boulevard that connects to overflow parking.

The building connects via an underground tunnel to three other state office buildings (Will Rogers, Sequoyah and Oliver Hodge) and provides access to a snack bar, the OMES Tech Café and an ATM.

- Convenient location near State Capitol.
- Three shared conference rooms.
- Shared building breaks rooms on third floor and basement.
- Visitor parking.
- Assigned parking with additional overflow parking across Lincoln Boulevard.
- Reception and security personnel.
- Lobby overlooking Capitol Complex park.
- Includes state fiber and IT infrastructure.
- OMES-managed building with designated building manager.
- Full-service lease.

**FOR LEASE**

**2501 N. Lincoln Blvd.  
Oklahoma City, OK 73105**

***TBD***

***Rental area:  
9,350 sq. ft.***





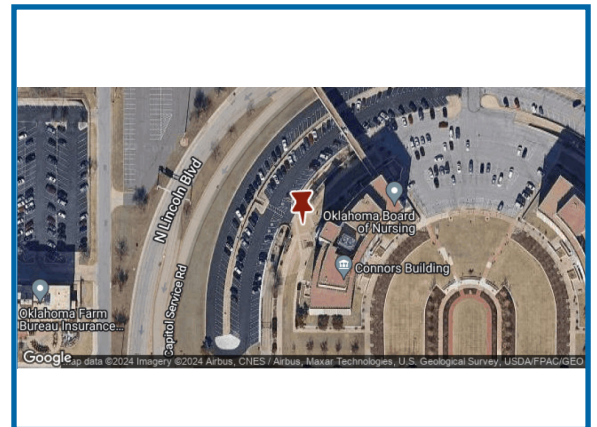
**OKLAHOMA**  
Office of Management  
& Enterprise Services

**Contact:**

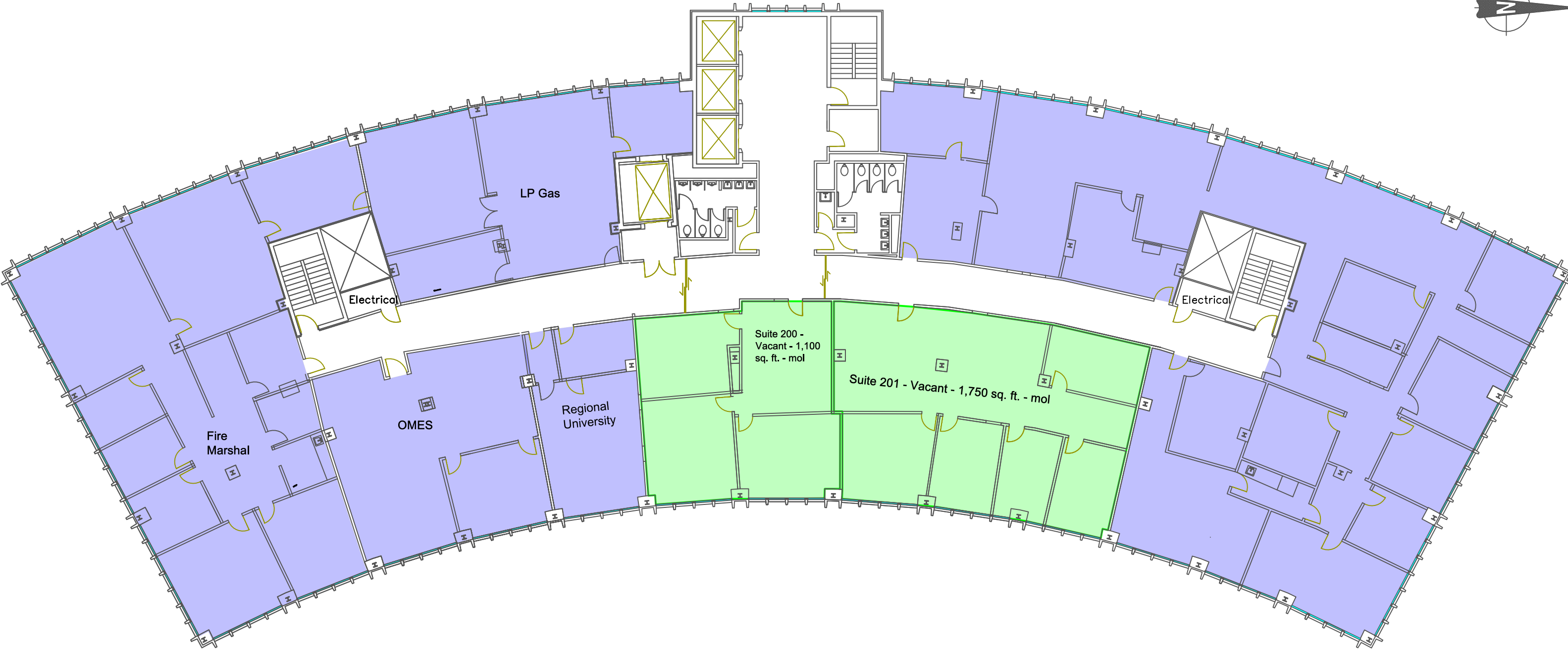
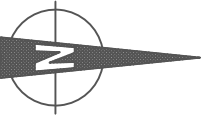
Brandon Ramirez

Phone: 580-471-3153

Email: [brandon.ramirez@omes.ok.gov](mailto:brandon.ramirez@omes.ok.gov)



The Office of Management and Enterprise Services Real Estate and Leasing Services team is here for all your needs. We serve those who serve Oklahomans and we're proud to do so.



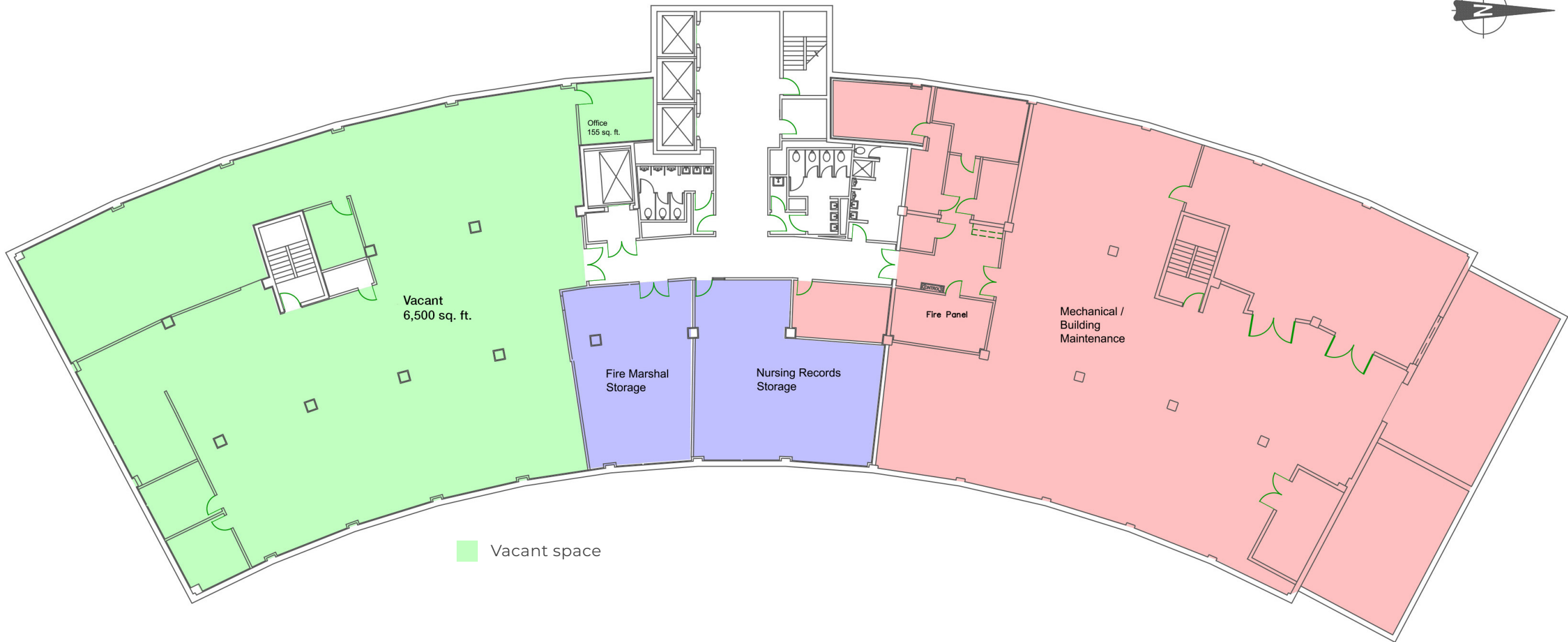
## M.C. Connors - Second Floor



**OKLAHOMA**  
Office of Management  
& Enterprise Services

This material is provided for informational purposes only. OMES REALS has gathered this information from reputable sources and methods but the information is still subject to errors, omissions, changes or withdrawal without prior notice.





## M.C. Connors – Subbasement Space

This material is provided for informational purposes only. OMES REALS has gathered this information from reputable sources and methods but the information is still subject to errors, omissions, changes or withdrawal without prior notice.



**OKLAHOMA**  
Office of Management  
& Enterprise Services