



Current State of Crisis 

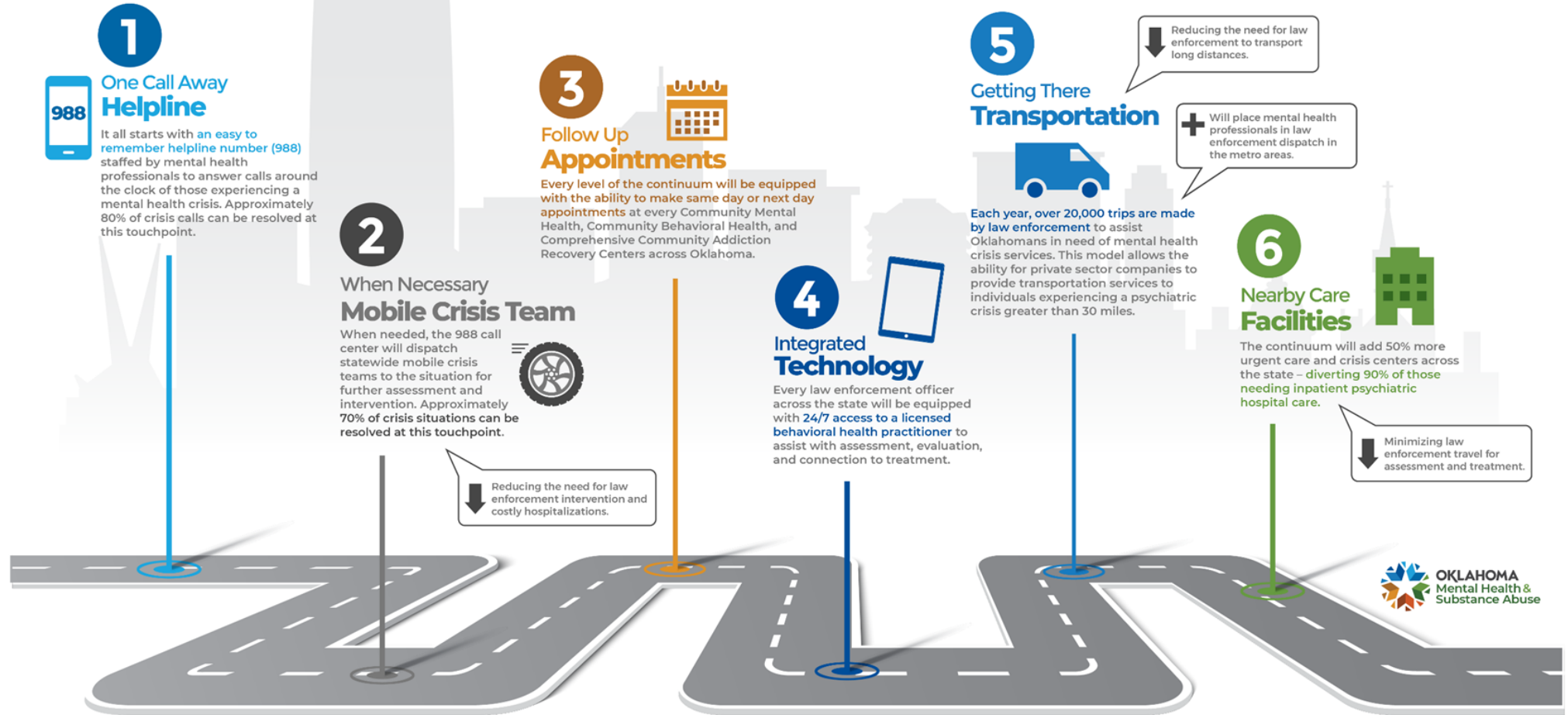
4.1 % of adults in Oklahoma had serious thoughts of suicide in the past year. 1 in 10 students reported attempting suicide in the past 12 months. **Each week, approximately 300 Oklahomans are admitted for urgent care or crisis mental health services.**

Goal 

The ODMHSAS believes that Oklahomans deserve to have mental health and addiction services within reach. Building the Comprehensive Crisis Response Continuum is an evidenced-based approach to helping us reach this goal, **meeting people where they're at, when they need it most.**

Overview 

ODMHSAS is building a comprehensive crisis response continuum to **enhance services Oklahomans receive when experiencing a psychiatric emergency** with the goal of providing immediate access at the lowest level of care.



1

One Call Away Helpline

It all starts with an easy to remember helpline number (988) staffed by mental health professionals to answer calls around the clock of those experiencing a mental health crisis. Approximately 80% of crisis calls can be resolved at this touchpoint.



2

When Necessary Mobile Crisis Team

When needed, the 988 call center will dispatch statewide mobile crisis teams to the situation for further assessment and intervention. Approximately 70% of crisis situations can be resolved at this touchpoint.



Reducing the need for law enforcement intervention and costly hospitalizations.

3

Follow Up Appointments

Every level of the continuum will be equipped with the ability to make same day or next day appointments at every Community Mental Health, Community Behavioral Health, and Comprehensive Community Addiction Recovery Centers across Oklahoma.



4

Integrated Technology

Every law enforcement officer across the state will be equipped with 24/7 access to a licensed behavioral health practitioner to assist with assessment, evaluation, and connection to treatment.



5

Getting There Transportation



Each year, over 20,000 trips are made by law enforcement to assist Oklahomans in need of mental health crisis services. This model allows the ability for private sector companies to provide transportation services to individuals experiencing a psychiatric crisis greater than 30 miles.

Reducing the need for law enforcement to transport long distances.

Will place mental health professionals in law enforcement dispatch in the metro areas.

6

Nearby Care Facilities

The continuum will add 50% more urgent care and crisis centers across the state – diverting 90% of those needing inpatient psychiatric hospital care.



Minimizing law enforcement travel for assessment and treatment.