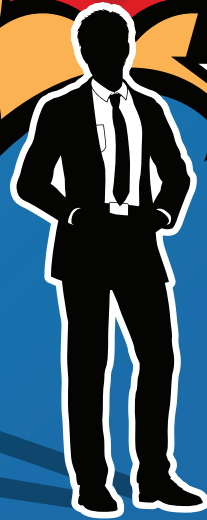


STATE CHARITABLE CAMPAIGN  
**2024**

**GUARDIANS  
OF THE  
COMMUNITY**



# TABLE OF CONTENTS

- FREQUENTLY ASKED QUESTIONS ..... 3
- LETTER FROM THE GOVERNOR..... 4
- LETTER FROM THE SCC CHAIR..... 4
- LOCAL FEDERATIONS..... 5
- STATEWIDE FEDERATIONS ..... 11
- INTERNATIONAL FEDERATIONS..... 14
- REGIONAL GIVING OPTIONS..... 17
- LEADERSHIP GIVING MEMBERS ..... 18
- SCC TRAVELING TROPHIES ..... 19
- LEADERSHIP GIVING BY AGENCY ..... 20
- INDEX OF CHARITIES ..... 22

# FREQUENTLY ASKED QUESTIONS

## What is the Oklahoma State Charitable Campaign?

The Oklahoma State Charitable Campaign (SCC) is an annual unified fundraising effort that provides state employees with the opportunity to make donations to their favorite charitable organizations through the convenience of payroll deduction or one-time gifts. The SCC is governed by the Oversight Committee for State Employee Charitable Contributions (OCSECC), which is comprised of seven state employee appointees.

## How do I give?

During the annual campaign, all state employees have the opportunity to make charitable contributions via a provided pledge card. All donations, large or small, are welcome and greatly appreciated. We encourage you to consider the many needs in your community and make the most generous gift possible. Through payroll deductions, employees may divide the annual contribution into smaller, regular amounts which are deducted each pay period during the coming calendar year. One dollar per pay period is the minimum deduction for payroll deductions. While payroll deduction is the preferred method, contributions may also be made by check, cash, credit or debit card.

## Who can I give to?

This charity guide lists all the eligible charitable federations and their member charities. Through the SCC, you may designate your gift to federations or member charities by indicating choices on the pledge card. Each federation and charity is listed separately, with an assigned four-digit charity code (e.g., 1234) that must be used when making a selection to ensure that your contribution reaches the charity or charities you wish to support.

To support a federation and have your gift shared among all of its charities, choose the federation code as it appears preceding the federation name and description. To support an individual charity within a federation, select that charity's code as it appears preceding the charity name and description. Pledge cards returned with a donation but without charity code numbers will be counted as undesignated donations.

## What happens to the undesignated donations?

According to Oklahoma Statutes, undesignated money shall be distributed in the same proportion as designated dollars within the state of Oklahoma.

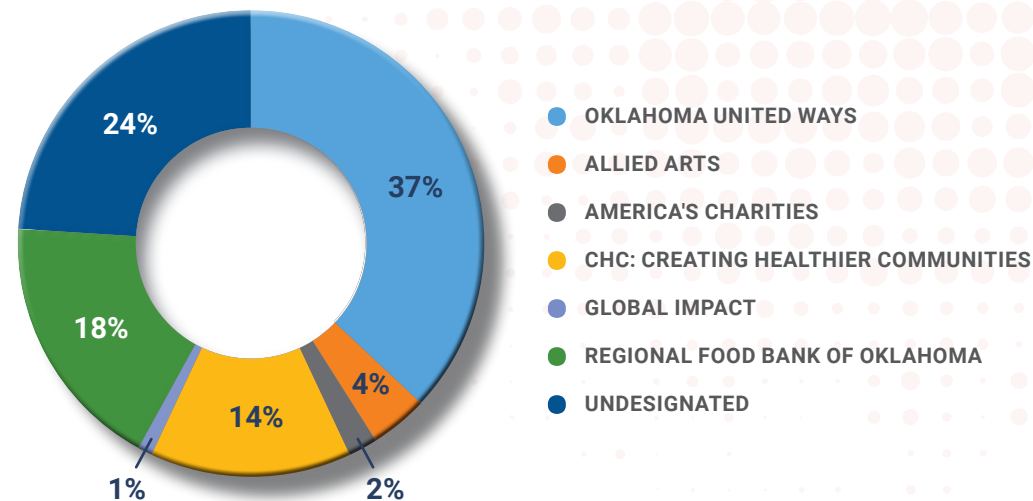
## What is the administrative rate for the SCC?

Administrative costs for the 2023 campaign were 10% of funds received. These funds provide for campaign materials creation and printing, postage and supplies, Loaned Executive support, coordinator training, campaign recognition, and professional staff. All federations share in the administrative costs proportionate to their designations in the campaign.

## How do I connect with the charities?

Throughout the charity guide, you will find the charities' social media accounts. Most member charities can also be found with a simple Google search.

# 2023 SCC CONTRIBUTIONS



# A LETTER FROM THE GOVERNOR

Dear friend,

I can't thank you enough for your public service to our great state, or for your participation in the annual State Charitable Campaign (SCC). Last year, your generous contributions helped us raise \$323,332, helping more than 250 organizations strengthen communities across Oklahoma.

These organizations are on the front lines of meeting the health needs and human service challenges facing some of our most vulnerable Oklahomans. The SCC helps those in need by providing meals, educational programs, medical care and even disaster aid.

Thanks to your continued generosity, many of our neighbors have received critical assistance from the organizations supported by the SCC. The Oklahoma Standard is truly alive and well.

Our goal for the 2024 campaign is to raise \$325,000, and I hope you will join me in supporting this worthy effort. Together, I am confident we can have our most successful year yet.

Once again, thank you for your generous contributions.

Sincerely,

J. Kevin Stitt  
Governor



# A LETTER FROM THE SCC CHAIR

The State Charitable Campaign (SCC) provides a great opportunity for state employees to contribute to accountable and capable charities that do vital work for many communities. The charities in the SCC not only help Oklahomans, but aid people in need at the national and international levels as well.

I know each community faces unique challenges, which makes me even more proud to know that state employees stepped up in 2023 and raised more than \$323,000. This year we have the chance to do it again. I know this can be accomplished with your generous support in helping us to reach our goal of \$325,000.

I greatly appreciate and applaud you for your heartfelt generosity towards those in need through your continued support of the SCC. With your pledge, you are changing lives and improving our communities.

Sincerely,

Ellen Buettner  
2024 State Charitable Campaign Chair



# LOCAL FEDERATIONS

## Allied Arts Federation

### 9100 ALLIED ARTS

Enriching lives and enhancing quality of life through a dynamic and sustainable arts nonprofit community.

Admin. 30%

FB: /alliedartsokc

Twitter/X: @alliedartsokc

### 9101 ARTS COUNCIL OF OKLAHOMA CITY

Bringing the arts and the community together through free and low cost events and educational initiatives in central Oklahoma.

Admin. 15%

FB: /artscouncilokc

### 9122 DEADCENTER FILM FESTIVAL

The mission of deadCenter Film is to inspire, promote, and celebrate creativity and community through film.

Admin. 33%

FB: /deadcenterfilm

Twitter/X: @deadcenterfilm

### 9104 LYRIC THEATRE OF OKLAHOMA, INC.

Lyric Theatre of Oklahoma is the state's leading professional theatre producing musicals and plays of the highest quality and serving 200,000 students statewide year round.

Admin. 13%

FB: /lyrictheatreofoklahoma

Twitter/X: @lyrictheatre

### 9120 MABEE-GERRER MUSEUM OF ART

Lifelong learning center enriching lives through art by providing educational tours, classes, wellbeing workshops, family activities, and unique art exhibits including two ancient Egyptian mummies.

Admin. 0%

FB: /mgmoa

Twitter/X: @mabeegerrerr

### 9123 NATIONAL COWBOY & WESTERN HERITAGE MUSEUM

Provides access to engaging educational programming and experiences to diverse audiences of adults and children regardless of socio-economic background or ability.

Admin. 36%

FB: /ncwhm

Twitter/X: @ncwhm

### 9115 OKLAHOMA CHILDREN'S THEATRE

Providing extraordinary live theatre and interactive educational experiences for young audiences. Inspiring young people to visualize potential, enhance family relationships, and invest in their future.

Admin. 23%

FB: /oklahomachildrenstheatre

Twitter/X: @okkidstheatre

### 9102 OKLAHOMA CITY BALLET

Oklahoma City Ballet inspires its audience through classical and contemporary dance performances, a dance school for all ages, and free community engagement programs and performances.

Admin. 12%

FB: /oklahomacityballet

Twitter/X: @okcballet

### 9105 OKLAHOMA CITY MUSEUM OF ART, INC.

The Oklahoma City Museum of Art enriches lives through the visual arts with world-class exhibitions, a growing permanent collection, educational programs, and community outreach.

Admin. 26%

FB: /okcmoa

Twitter/X: @okcmoa

### 9106 OKLAHOMA CITY PHILHARMONIC

Provides inspiration and joy for the community through orchestral music.

Admin. 18%

FB: /okcphilharmonic

Twitter/X: @okc\_phil

### 9110 OKLAHOMA CONTEMPORARY ARTS CENTER

Oklahoma Contemporary provides arts education programs for youths and adults across many artistic disciplines and features free exhibitions that promote learning from living artists.

Admin. 37%

FB: /oklahomacontemporary

Twitter/X: @okcontemporary

### 9116 OKLAHOMA SHAKESPEARE IN THE PARK

To provide arts performance and education to the people of Oklahoma City and surrounding communities. Now in our 40th season of professional performing arts.

Admin. 22%

FB: /oklahomashakespeare

### 9117 OKLAHOMA VISUAL ARTS COALITION

Growing and developing Oklahoma's visual arts community through education, connection, promotion, and funding.

Admin. 24%

FB: /oklahomavisualartscoalition

### 9107 SCIENCE MUSEUM OKLAHOMA

Encouraging creative exploration of the world and revealing the importance of science, art/culture through interactive exhibits, discovery-based activities, astronomy shows, and community outreach.

Admin. 20%

FB: /sciencemuseumoklahoma

Twitter/X: @sciencemuseumok

### 9125 THE SOONER THEATRE/ THE STUDIO OF THE SOONER THEATRE

The Sooner Theatre changes lives, offers diverse perspectives, and creates a cultural connection to the community through the performing arts and performing arts education.

Admin. 51%

FB: /soonertheatrenorman



## United Way of Central Oklahoma Federation INCLUDING Canadian and Logan Counties

### 7000 UNITED WAY OF CENTRAL OKLAHOMA

Building a stronger, healthier, more compassionate community through a network of 68 Partner Agencies and local donors who contributed over \$17 million in 2023.

Admin. 12%  
FB: /unitedwayokc

### 7012 211 COMMUNITY RESOURCE LINE

HeartLine connects Oklahomans with help, hope, and information 24 hours a day through phone and web based services, crisis intervention, and suicide prevention.

211 - heartlineoklahoma.org  
Admin. 14%  
FB: /heartline.inc.  
Twitter/X: @heartline

### 7009 A CHANCE TO CHANGE

A Chance to Change provides a continuum of care including prevention, education, and outpatient counseling for individuals and families with mental health needs.

Admin. 17%  
FB: /actc79

### 7004 AREAWIDE AGING AGENCY, INC.

Maintaining and advancing the dignity and independence of older adults through services such as nutrition, transportation, caregiver support, and a dedicated hotline for local resources.

Admin. 5%  
FB: /areawideagingoklahoma

### 7055 BETHESDA, INC.

Programs provide specialized trauma informed treatment for child sexual abuse including therapy for survivors and families and furthers public awareness of abuse related issues statewide.

Admin. 8%  
FB: /bethesdalnc

### 7007 BIG BROTHERS BIG SISTERS OF OKLAHOMA

Creates and supports one-to-one mentoring relationships that ignite the power and promise of youth.

Admin. 19%  
FB: /bbbsokokc

### 7028 BOYS & GIRLS CLUBS OF OKLAHOMA COUNTY

A safe, positive place where youth spend out of school time with mentors and enrichment programs in academics, STEAM, wellbeing, sports, workforce development, and leadership.

Admin. 5%  
FB: /bgcokc

### 7903 C.A.R.T. HOUSE

Accredited Child Advocacy Center providing services to Canadian County children who have experienced physical or sexual abuse, neglect, or witnessed domestic violence.

Admin. 12%  
FB: /thecarhouse

### 7050 CALM WATERS CENTER FOR CHILDREN AND FAMILIES

Helping children and families in their grief journeys caused by death, divorce, or other significant loss.

Admin. 18%  
FB: /calmwatersok  
Twitter/X: @calmwatersok

### 7016 CAMP FIRE HEART OF OKLAHOMA

Innovative youth development programs and camps to help youth thrive with the life skills they need for success.

Admin. 18%  
FB: /campdakani  
Twitter/X: @campfirehok

### 7914 CANADIAN COUNTY 4-H

To promote, encourage, support, enrich, and financially assist 4-H programs through club and school enrichment in Canadian County, Oklahoma.

Admin. 14%  
FB: /canadiancounty4h

### 7913 CANADIAN COUNTY CASA, INC.

Recruits and trains volunteers to advocate within courts for the best interest of abused and/or neglected children to promote a safe, nurturing home environment.

Admin. 0%  
FB: /canadiancountycasa  
Twitter/X: @cancocasa

### 7318 CASA FOR KIDS, INC.

Recruits, screens, trains, and supports community volunteers who advocate for the best interest of abused and neglected children in juvenile deprived court.

Admin. 13%  
FB: /casaforkidspayneandloganco

### 7051 CASA OF OKLAHOMA COUNTY, INC.

Recruit, train, and supervise volunteers who advocate for the best interests of children in foster care from Oklahoma County.

Admin. 22%  
FB: /casaofokco  
Twitter/X: @casaofokco

### 7006 CATHOLIC CHARITIES OF THE ARCHDIOCESE OF OKLAHOMA CITY, INC.

Social services for children, adults, families; affordable housing; women/children homeless services; case management; disaster recovery; adoption/pregnancy services; counseling; immigration legal services; refugee resettlement.

Admin. 12%  
FB: /ccaokc

### 7916 CENTER OF FAMILY LOVE

Provide quality lifetime care to adults with intellectual and developmental disabilities at no cost.

Admin. 10%  
FB: /centeroffamilylove

### 7067 CIRCLE OF CARE, INC.

Our mission is to provide Christian help, healing, and hope to children and families to ensure a safe, healthy, and spiritual future.

Admin. 17%  
FB: /circleofcareok  
Twitter/X: @circleofcareok

### 7034 CITIZENS CARING FOR CHILDREN

Citizens Caring for Children provides new clothing, books, personal hygiene kits, coats, car seats, and backpacks to children living in foster care in central Oklahoma.

Admin. 9%  
FB: /cccokc

### 7075 CITY CARE INC.

Providing immediate relief and long-term support to Oklahoma City's most vulnerable populations through homeless services, permanent supportive housing, and character-based, literacy-focused programs.

Admin. 22%  
FB: /citycareokc  
Twitter/X: @citycareokc

### 7052 COMMUNITY LITERACY CENTERS, INC.

Community Literacy Centers, Inc. provides ABE, ESL, HSE classes and volunteer workshops to Oklahoma County residents. Teaches literacy skills to over 650 adults each year.

Admin. 16%  
FB: /communityliteracy  
Twitter/X: @literacyokc

### 7917 COMPASSIONATE SHARING

Providing food, clothing, and transportation to the less fortunate, seniors, and disabled in Yukon.

Admin. 12%

### 7013 DAILY LIVING CENTERS

Leader in caregiver respite and adult day services for elderly adults with disabilities. We provide health monitoring, meals, exercise, socialization, transportation, and medrides.

Admin. 18%  
FB: /dailylivingcentersok

### 7054 D-DENT

FREE comprehensive restorative dental care for low income, disabled, elderly, and veteran Oklahomans.

Admin. 15%  
FB: /oklahomasmls

### 7024 DALE ROGERS TRAINING CENTER (DRTC)

A private nonprofit organization leading the way toward a more disability-inclusive workforce and community, serving teenagers and adults in the OKC metro.

Admin. 12%  
FB: /dalerogerstrainingcenter  
Twitter/X: @drtcorg

### 7901 EL RENO BLESSING BASKETS, INC.

El Reno Blessing Baskets' vision is for everyone to live hunger free and have ample tangible essentials for healthy living.

Admin. 2%  
FB: /elrenoblessingbaskets

### 7014 EMPLOYMENT AND RESIDENTIAL CENTERS, INC.

EARC provides a better quality of life and encourages greater independence to adults with intellectual disabilities through employment and residential services. (405) 347-7132 - www.earcinc.org

Admin. 11%  
FB: /earcinc

### 7029 GIRL SCOUTS WESTERN OKLAHOMA

Girl Scouts Western Oklahoma builds girls of courage, confidence, and character who make the world a better place.

Admin. 21%  
FB: /gwesternok  
Twitter/X: @gswestok

### 7317 GOD'S FOOD BANK

Feeds the hungry of Logan County through supplemental food assistance. We provide displaced families with food. We serve about 250 families each week.

Admin. 23%  
FB: /godsfoodbank

### 7070 HEALTH ALLIANCE FOR THE UNINSURED

HAU assists with FREE medications, diagnostic testing, specialist care, and surgeries for low income, uninsured individuals who are patients of charitable safety net clinics in Oklahoma.

Admin. 2%  
FB: /hauinokc  
Twitter/X: @huninsured

### 7066 HOMELESS ALLIANCE

Ending homelessness in OKC by facilitating collaboration; gathering and analyzing data; and providing shelter, supportive employment, access to services including healthcare, and, most importantly, housing.

Admin. 6%  
FB: /homelessalliance  
Twitter/X: @homelessokc

### 7908 ICAN

Providing 24-hour crisis intervention services for victims of domestic violence, sexual assault, and stalking including emergency shelter, support groups, court advocacy, and emergency transportation.

Admin. 20%  
FB: /icandvsa

### 7041 INTEGRIS HOSPICE HOUSE

INTEGRIS Hospice, caring for the terminally ill in home and inpatient settings. Services include medications, medical equipment, pain control, spiritual and emotional support, and grief services.

Admin. 10%  
FB: /integrishealthok

### 7018 LAST FRONTIER COUNCIL-BOY SCOUTS OF AMERICA

Boy Scout's youth development program prepares youth to make ethical choices over their lifetime, using various activities to address their physical, mental, and spiritual needs.

Admin. 17%  
FB: /lastfrontiercouncil  
Twitter/X: @lfcbbbsa

### 7060 LATINO COMMUNITY DEVELOPMENT AGENCY

Empowering our community with education, health and mental health support, youth programs, and family services, fostering resilience, development, and collective well-being.

Admin. 19%  
FB: /latinoagency

### 7019 LEGAL AID SERVICES OF OKLAHOMA, INC.

Partnering in the community to make equal justice for all a reality through free, high quality civil legal services for low income and elderly Oklahomans.

Admin. 12%  
FB: /legalaiddok  
Twitter/X: @legalaidsvcs\_ok

### 7309 LOGAN COMMUNITY SERVICES, INC.

Providing outpatient counseling and drug and alcohol treatment to local residents as well as serving as an emergency youth shelter for displaced and homeless children.

Admin. 1%  
FB: /servlogan

### 7306 LOGAN COUNTY COUNCIL ON AGING

To improve the quality of life and independence of the elderly population through assistance with food, basic services, physical and financial needs in Logan County.

Admin. 27%  
FB: /logancountycoa

### 7072 MENTAL HEALTH ASSOCIATION OKLAHOMA

The state's premier boots-on-the-ground nonprofit whose expertise and work exists primarily at the intersection of mental illness and homelessness.

Admin. 17%  
FB: /mhaokla  
Twitter/X: @mhaokla

### 7030 METROPOLITAN BETTER LIVING CENTER INC.

To provide and enhance person-centered services to seniors and aging adults with cognitive and physical challenges and disabilities.

Admin. 14%  
FB: /mblocok

### 7021 MOORE YOUTH & FAMILY SERVICES, INC.

Provides community-based services including individual group family counseling assessments and referral, psychoeducational groups, early intervention, and prevention services for children, adolescents, and their families.

Admin. 8%

### 7022 NEIGHBORHOOD SERVICES ORGANIZATION

NSO provides temporary and permanent housing, nutrition, dental, case management, life skills, and self-sufficiency services for low-income and/or homeless individuals or families.

Admin. 8%  
FB: /nsookc.org  
Twitter/X: @nsookc

### 7073 NEWVIEW OKLAHOMA

Empowering blind/low-vision Oklahomans by providing employment and rehabilitation services like skills, assistive technologies, and mobility training for maximizing opportunities for independence.

Admin. 10%  
FB: /newviewoklahoma  
Twitter/X: @newviewok

### 7010 NORTHCARE

NorthCare is an umbrella organization sheltering Oklahoma's most vulnerable populations, providing services and intervention in mental health services, addiction treatment, family crisis response, and more.

Admin. 15%  
FB: /northcareokc  
Twitter/X: @northcareokc

### 7025 OKLAHOMA FOUNDATION FOR THE DISABLED, INC.

Adult day health, providing life skills, social, and recreational activities for developmentally disabled adults including field trips with social integration and respite for client caregivers.

Admin. 7%  
FB: /okfdokc

### 7027 OKLAHOMA MEDICAL RESEARCH FOUNDATION

Independent non-profit research institute dedicated to discovering treatments and cures for human diseases such as cancer, aging, cardiovascular, and autoimmune disorders.

Admin. 6%  
FB: /omrfok  
Twitter/X: @omrf

# A COMMUNITY FIT FOR THOSE LIVING WITH A DISABILITY

The clients of this SCC participating agency do not fit in a box. Each client is unique.

Blake has a rare diagnosis that affects less than 1% of the population. His condition affects his cognitive and physical abilities. Blake has his own way of communicating — he is nonverbal and can only make sounds.

His parents provide support, but they need to work during the day. When he arrived at the SCC agency program after high school, the staff was unsure how he would react to the other clients and activities. To his mother's surprise, he adapted and is doing well. She said he hates missing a day.

Programs funded by the SCC offer vocational opportunities for teens and adults living with disabilities and specialized childcare for children. Meaningful work opportunities give participants a sense of pride and purpose while children from birth to 18 years of age receive education and physical and occupational therapies, providing support and relief to parents and caregivers to maintain their personal obligations.

Blake may not be able to express it, but both his family and the SCC Charity know he loves being a part of their community program.



**7049 PIVOT, INC.**  
Pivot Inc. advocates, educates, intervenes, and counsels youth and families to make a positive difference in their lives. We are a turning point for youth.  
**Admin. 15%**  
FB: /pivotok  
Twitter/X: @pivotok

**7032 POSITIVE TOMORROWS**  
Partnering with families experiencing homelessness to educate their children and create pathways to success.  
**Admin. 21%**  
FB: /positivetomorrow  
Twitter/X: @ptok

**7058 POSSIBILITIES, INC.**  
Possibilities strengthens the ability of people to work together for community change through training and mentoring programs for engagement, empowerment, and leadership in our communities.  
**Admin. 20%**  
FB: /possibilitiesok

**7031 RSVP OF CENTRAL OK**  
RSVP connects and empowers older adult volunteers to support the critical needs of local nonprofits, encouraging a spirit of service and community throughout Oklahoma County.  
**Admin. 6%**  
FB: /rsvpok

**7907 RUSSELL-MURRAY HOSPICE, INC.**  
Provides comfort care to terminally ill patients through a program of integrative services including medical, nursing, social work, spiritual counselors, hospice aides, volunteers, and counselors.  
**Admin. 24%**  
FB: russell-murray-hospice

**7071 SKYLINE**  
Providing free groceries, eye care, and clothing resources to Oklahomans in need.  
**Admin. 22%**  
FB: /okcityskyline

**7036 SPECIAL CARE**  
Providing direct care, accredited education, speech, occupational, physical, and behavioral therapy programs for 205 children with and without disabilities, ages 6 weeks to 21 years.  
**Admin. 17%**  
FB: /specialcareinc

**7037 SUNBEAM FAMILY SERVICES, INC.**  
Sunbeam builds brighter futures with all children and families through early childhood education and wraparound services including foster care, mental health, and support for seniors.  
**Admin. 16%**  
FB: /sunbeamokc  
Twitter/X: @sunbeamokc

**7068 TEEM**  
The Education and Employment Ministry breaks cycles of incarceration and poverty through wraparound services, personal development, job readiness training: serving over 2,000 participants yearly.  
**Admin. 20%**  
FB: /okcteam  
Twitter/X: @okcteam

**7076 THE CARE CENTER**  
Exists to provide trauma-informed healing and investigative services for victims of child abuse and empower Oklahomans to end child abuse through prevention education.  
**Admin. 15%**  
FB: /carecenterok

**7033 THE SALVATION ARMY OF CENTRAL OKLAHOMA**  
Providing hope and healing through emergency assistance programs to residents of Central Oklahoma who are experiencing hardships or setbacks in their lives.  
**Admin. 20%**  
FB: /salarmycentralok  
Twitter/X: @salvationarmyok

**7321 THE SAVILLE CENTER**  
Child advocacy prevention, forensic interviews, case review, medical exams, family resources, therapy services, family advocacy, court school, court support.  
**Admin. 36%**  
FB: /savillecenter

**7319 TWIN CEDARS**  
Providing outdoor recreation and camp experiences to children and adults with physical and intellectual disabilities and other nonprofit organizations.  
**Admin. 24%**  
FB: /makepromiseshappen

**7039 UPWARD TRANSITIONS, INC.**  
Serving those who are homeless or at risk of becoming homeless by providing case management and stabilizing resources to help meet their basic social needs.  
**Admin. 9%**  
FB: /upwardtransitions  
Twitter/X: @upwdrtrnstns

**7042 URBAN LEAGUE OF GREATER OKLAHOMA CITY, INC.**  
Serves families, teens, adults, the working poor, and low/moderate income families with housing, financial literacy, workforce, family development, education, and community social justice.  
**Admin. 12%**  
FB: /urbanleagueok  
Twitter/X: @urbanleagueok

**7043 VARIETY CARE, INC.**  
Providing affordable, accessible healthcare for uninsured, underinsured, and low-income Oklahomans, including primary, medical, dental, vision, behavioral health care, pediatrics, prenatal, and family planning.  
**Admin. 16%**  
FB: /varietycare  
Twitter/X: @varietycare.org

**7045 YMCA OF GREATER OKLAHOMA CITY**  
To provide programs that build healthy spirit, mind, and body in the areas of healthy living, youth development and social responsibility.  
**Admin. 16%**  
FB: /ymcagreaterok  
Twitter/X: @ymcagreaterokc

**7911 YOUTH & FAMILY SERVICES, INC.**  
Youth & Family Services Inc. provides emergency shelter, counseling, delinquency prevention, independent living, and educational programs to children with special needs and at-risk youth.  
**Admin. 2%**  
FB: /yfsok  
Twitter/X: @hope\_thedog

**7046 YWCA OKLAHOMA CITY**  
YWCA Oklahoma City provides shelter and crisis services in Oklahoma County to more than 4,000 victims of domestic violence and sexual assault and their children.  
**Admin. 12%**  
FB: /ywcaokc  
Twitter/X: @ywcaokc

## United Way of Norman Federation

**7100 UNITED WAY OF NORMAN**  
Norman's leader in addressing community issues for lasting change. Your investment focuses on education, health, and financial stability.  
**Admin. 14%**  
FB: /unitedwaynorman  
Twitter/X: @unitedwaynorman

**7166 ABLE COMMUNITY BASED SERVICES**  
Enables adults with intellectual and developmental disabilities to lead meaningful lives by providing housing and employment skill building opportunities to support independence.  
**Admin. 12%**  
FB: /ableinnorman

**7126 AGING SERVICES, INC.**  
Enhances the lives and dignity of Cleveland County senior adults by providing programs, services and referrals that assist and promote healthy independence.  
**Admin. 2%**  
FB: /agingservicesok

**7103 BETHESDA, INC.**  
Programs provide specialized trauma informed treatment for child sexual abuse including therapy for survivors and families and furthers public awareness of abuse related issues statewide.  
**Admin. 8%**  
FB: /bethesdaic

**7104 BIG BROTHERS BIG SISTERS OF OKLAHOMA**  
Create and support one-to-one mentoring relationships that ignite that power and promise of youth.  
**Admin. 19%**  
FB: /bbbsoknorman

**7148 CATHOLIC CHARITIES OF THE ARCHDIOCESE OF OKLAHOMA CITY, INC.**  
Social services for children, adults, families; affordable housing; women/children homeless services; case management; disaster recovery; adoption/pregnancy services; counseling; immigration legal services; refugee resettlement.  
**Admin. 12%**  
FB: /ccaokc

**7113 CCFI**  
To heal children, empower youth and strengthen families, because every child deserves to grow up safe, nurtured, and loved.  
**Admin. 15%**  
FB: /ccfinorman  
Twitter/X: @ccfinorman

**7122 FOOD AND SHELTER**  
Food and Shelter provides services that empower people in need of food, homes, and hope.  
**Admin. 4%**  
FB: /food-and-shelter-inc

**7139 FOSTERING FUTURES**  
Providing financial support for children involved with Cleveland County Child Welfare addressing safety, stability, healthy connections, and enrichment needs.  
**Admin. 8%**  
FB: /cabok581

**7134 FULL CIRCLE ADULT DAY CENTER INC.**  
Adult day services that promote physical, cognitive, emotional, and social wellbeing for elderly and disabled adults. Provide caregiver respite and resources. Keeping families together longer.  
**Admin. 5%**  
FB: /fullcircleadc

**7133 MARY ABBOTT CHILDREN'S HOUSE**  
A child advocacy center serving children of abuse, neglect, and drug endangered situations through forensic interviews, advocacy, medical assessments, and education promoting prevention.  
**Admin. 15%**  
FB: /machnorman



**7114 MEALS ON WHEELS OF NORMAN, INC.**

Dedicated volunteer drivers deliver nutritious meals Monday-Friday to the senior and homebound of our community, often serving as a lifeline to these isolated individuals.

Admin. 10%  
FB: /mealsonwheelsnorman  
Twitter/X: @mealsonwheelsok

**7121 SOUTH CENTRAL CASA OF OKLAHOMA**

South Central CASA Court Appointed Special Advocates providing advocacy for children who are victims of child abuse, sexual abuse, and or neglect.

Admin. 12%  
FB: /southcentralcasa

**7117 THE SALVATION ARMY OF CLEVELAND AND MCCLAIN COUNTIES**

Providing hope and healing through emergency assistance programs to residents of Cleveland and McClain Counties who are experiencing hardships or setbacks in their lives.

Admin. 20%  
FB: /salarmynorman  
Twitter/X: @salvationarmyok

**7111 THE VIRTUE CENTER**

The Virtue Center is a place of help and hope for people facing addiction and mental health challenges.

Admin. 16%  
FB: /thevirtuecenter  
Twitter/X: @thevirtuecenter

**7138 THUNDERBIRD CLUBHOUSE**

Providing support for adults recovering from mental illness through opportunities for employment, housing, education, socialization, and wellness.

Admin. 0%  
FB: /thunderbirdclubhouse  
Twitter/X: @tbclubhouse

**7118 TRANSITION HOUSE, INC.**

Providing transitional living services to adults with serious mental illness through Transitional Living and Community Outreach Programs and Drop-in Center.

Admin. 19%  
FB: /transitionhouseinc  
Twitter/X: @thou82

**7120 WOMEN'S RESOURCE CENTER**

Providing crisis intervention, intimate partner violence shelter; rape crisis center; rape response advocates; S.A.N.E.; education and supportive services to victims of domestic and sexual violence.

Admin. 11%  
FB: /wrcnorman

**United Way of Pottawatomie County Federation**

**7200 UNITED WAY OF POTTAWATOMIE COUNTY**

Your investments support programs impacting health, education, and financial stability to build a stronger community.

Admin. 24%  
FB: /uwpottco

**7240 211 COMMUNITY RESOURCE LINE**

HeartLine connecting Oklahomans with help, hope, and information 24 hours a day through phone and web based services, crisis intervention, and suicide prevention.

211 - heartlineoklahoma.org  
Admin. 14%  
FB: /heartline.inc  
Twitter/X: @heartline

**7235 CENTRAL OKLAHOMA COMMUNITY ACTION AGENCY, INC.**

COCAA provides assistance in six counties to low income households. Services include rent, utility, food, prescriptions, transportation, housing, eyeglasses, referrals, and senior volunteer opportunities.

Admin. 17%

**7224 LAST FRONTIER COUNCIL - BOY SCOUTS OF AMERICA**

Boy Scouts' youth development program prepares youth to make ethical choices over their lifetime, using various activities to address their physical, mental, and spiritual needs.

Admin. 17%  
FB: /lastfrontiercouncil  
Twitter/X: @lfcbsa

**7214 LEGAL AID SERVICES OF OKLAHOMA, INC.**

Partnering in the community to make equal justice for all a reality through free high quality civil legal services for low income and elderly Oklahomans.

Admin. 12%  
FB: /legalaiddok  
Twitter/X: @legalaidsvcs\_ok

**7230 OKLAHOMA 4-H FOUNDATION**

Utilize research-based educational workshops and events to build life-skills and abilities enabling youth to become active and successful leaders in their community.

Admin. 30%  
FB: /pottawatomiecounty4h

**7205 PROJECT: SAFE**

Project: SAFE provides emergency shelter and advocacy services to victims of domestic violence and sexual assault. Advocates for safety, empowerment, healing, and freedom from abuse.

Admin. 12%  
FB: /projectsafe

**7232 SOUTH CENTRAL INDUSTRIES, INC.**

Providing vocational training, employment opportunities, and residential care to individuals with developmental disabilities.

Admin. 4%  
FB: /southcentralindustries  
Twitter/X: @southcentralind

**STATE FEDERATIONS**

**Regional Food Bank of Oklahoma Federation**

**9220 THE REGIONAL FOOD BANK OF OKLAHOMA, INC.**

The Regional Food Bank of Oklahoma leads the fight against hunger in central and western Oklahoma by distributing 50 million pounds of food annually.

Admin. 4%  
FB: /regionalfoodbank  
Twitter/X: @rfbo

**9222 BRITVIL COMMUNITY FOOD PANTRY**

Our mission is to provide food to the hungry, regardless of race, color, religion or creed.

Admin. 4%  
FB: /britvilcommunityfoodpantry  
Twitter/X: @britvilfood

**9201 CITY RESCUE MISSION, INC.**

Solution based services ending homelessness; shelter, meals, clothing, recovery, education, employment, permanent housing and social services to 250 men, women, children, nightly at no charge.

Admin. 24%  
FB: /okcityrescue  
Twitter/X: @okcityrescue

**7015 GOODWILL CENTRAL OKLAHOMA**

Providing comprehensive job training, employment, education, and micro-credentials through a holistic approach to support formerly incarcerated individuals, youth, and underserved communities in Oklahoma.

Admin. 13%  
FB: /okgoodwill  
Twitter/X: @okgoodwill

**9064 INFANT CRISIS SERVICES**

Infant Crisis Services provides life sustaining formula, food, and diapers to babies and toddlers in times of crisis. Because no baby should go hungry.

Admin. 17%  
FB: /infantcrisiservices  
Twitter/X: @infantcrisis

**9203 JESUS HOUSE OF OKC**

An inner-city, non-denomination Christian outreach providing food recovery to men and women experiencing addiction, mental disorders, homelessness with a place to receive hope.

Admin. 22%  
FB: /jesushouseokc  
Twitter/X: @jesushouseokc

**9227 OKC METRO ALLIANCE**

OKC Metro Alliance assists Oklahomans who want to recover from substance abuse by providing long-term residential work, recovery and to offer alternatives to incarceration.

Admin. 10%  
FB: /okcmetroalliance

**CHC: Creating Healthier Communities Federation**

**8050 CHC: CREATING HEALTHIER COMMUNITIES**

Building partnerships to address health inequity by fostering trusted community engagement, offering programs and services, and fundraising to support communities where everyone can thrive.

Admin. 5%  
FB: /chcimpact  
Twitter/X: @chcimpact

**8027 ABILITY CONNECTION OKLAHOMA**

Providing services to enhance life quality of people with cerebral palsy and other physical disabilities; advancing independence, productivity, and full citizenship. United Cerebral Palsy Affiliate.

Admin. 15%  
FB: /abilityconnectionoklahoma  
Twitter/X: @abilityok

**8066 AIDS RESEARCH FOUNDATION (AMFAR)**

Invests in innovative AIDS cure research; advocating to increase funding for research, prevention, treatment and protecting the rights of all people affected by HIV/AIDS.

Admin. 28%  
FB: /amfarthefoundationforaidsresearch  
Twitter/X: @amfar

**8004 ALLY'S HOUSE, INC.**

Providing support to Oklahoma children with cancer and their families through financial assistance and free camp programming.

Admin. 17%  
FB: /allyshouse  
Twitter/X: @allyshouse

**8064 AMERICAN LIVER FOUNDATION**

The nation's leading non-profit that facilitates, advocates, and promotes education about the prevention, treatment, and curing of liver disease.

Admin. 19%  
FB: /liverinfo  
Twitter/X: @liverusa

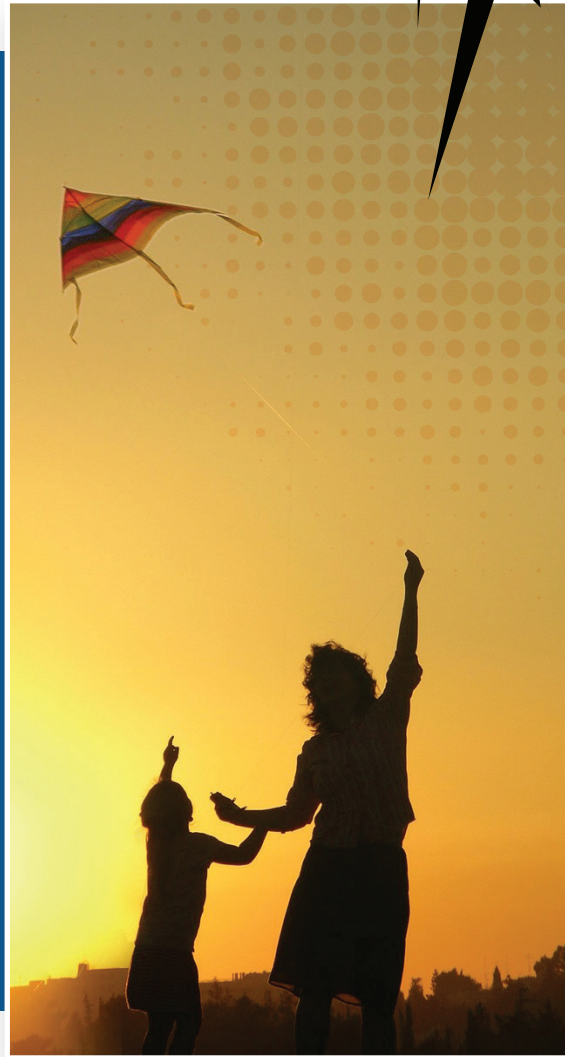
**LOCAL DONATIONS MAKING A GLOBAL IMPACT**

Children born with cleft lips or palates, like Angelina's son Miguel, often suffer much difficulty later on in life if their defect is not corrected at an early age. As babies, they may have trouble eating, their speech development may be delayed, and they are often not accepted by schoolmates. If unable to finish school, then they likely will be unable to get a job in adulthood.

Miguel's future certainly looked bleak. But Angelina had not given up all hope. Their family was not wealthy – they were just struggling to survive, really – so she had been turned away at every medical facility she had approached near her small town in Colombia, looking for help for Miguel.

Angelina's last hope was a medical mission team visiting Santa Marta. They examined Miguel and determined that he was eligible for surgery, free of cost. She could hardly believe their good fortune. When she saw her son after the operation with his repaired lip, she could not stop the tears of joy flowing down her cheeks. What a blessing that this team had welcomed them with open arms and finally helped her son!

Because of generous supporters like you, Miguel and others like him were given the chance to thrive in their childhood and grow up to live their lives to the fullest.



**8037 AMERICAN LUNG ASSOCIATION IN OKLAHOMA**

The American Lung Association is the leading organization working to save lives by improving lung health and preventing lung disease through research, education, and advocacy.

Admin. 11%  
FB: /americanlungok  
Twitter/X: @americanlungok

**8058 AUTISM SPEAKS**

Promotes lifelong solutions for individuals with autism and families through advocacy and support, increasing ASD acceptance and advancing research into causes and better interventions.

Admin. 27%  
FB: /autismspeaks  
Twitter/X: @autismspeaks

**8031 BETHANY CHILDREN'S HEALTH CENTER**

Innovative leader in children's health and wellness; providing medical, rehabilitative, and education services focused on children with complex medical needs and physical disabilities.

Admin. 7%  
FB: /bethanychildrens  
Twitter/X: @bethanychildrns

**8056 BREAST CANCER RESEARCH FOUNDATION**

Every two minutes someone is diagnosed with breast cancer. Help the highest rated breast cancer organization advance our mission to fund research and save lives.

Admin. 15%  
FB: /thebreastcancerresearchfoundation  
Twitter/X: @bcrcfure

**8059 CAVETT KIDS FOUNDATION**

Cavett Kids provides free camps and support for kids battling serious illnesses. In everything we do, we strive to develop character, coping, and connection.

Admin. 20%  
FB: /cavettkids  
Twitter/X: @cavettkids

**8024 CHILDREN'S HEALTH FOUNDATION**

Children's Health Foundation improves the health of children through its support of research, education, and care in Oklahoma.

Admin. 14%  
FB: /okchildrenshealthfoundation  
Twitter/X: @okchf

**8006 CROHN'S & COLITIS FOUNDATION NORTHERN TEXAS/OKLAHOMA CHAPTER**

To cure Crohn's Disease and Ulcerative Colitis and to improve the quality of life of children and adults affected by these diseases.

Admin. 21%  
FB: /ccfanorthtexas  
Twitter/X: @ccfdnntexas

**8005 CYSTIC FIBROSIS FOUNDATION**

Cure CF and provide all people with CF the opportunity to lead long fulfilling lives by funding research, partnering with the community, and advancing care.

Admin. 29%  
FB: /cysticfibrosisfoundation  
Twitter/X: @cf\_foundation

**8070 DOCTORS WITHOUT BORDERS USA**

An independent, international, medical humanitarian organization that delivers emergency aid to people affected by armed conflict, epidemics, and natural disasters in more than 70 countries.

Admin. 16%  
FB: /doctorswithoutborders  
Twitter/X: @doctorsw/oborders

**8007 EPILEPSY FOUNDATION OKLAHOMA**

Epilepsy Foundation's mission: stop seizures and SUDEP, find a cure, and overcome challenges created by epilepsy through education, advocacy, and research to accelerate new therapies.

Admin. 17%  
FB: /okepilepsy  
Twitter/X: @okepilepsy

**8036 HAROLD HAMM DIABETES CENTER**

Eradicating diabetes through the advancement of innovative research focused on progress towards a cure, dramatically improved patient care, and diabetes prevention, education, and strategies.

Admin. 12%

**8061 HEARTS FOR HEARING FOUNDATION**

Hearts for Hearing creates life-changing opportunities for children and adults with hearing loss to listen for a lifetime.

Admin. 5%  
FB: /heartsforhearing  
Twitter/X: @hearts4hearing

**8063 HOPE IS ALIVE**

Hope is Alive sober living mentoring program transforms lives by providing a faith-based community, accountability, and education to those seeking help from addiction.

Admin. 22%  
FB: /hopeisaliveok

**8071 HOUGH EAR INSTITUTE**

Hough Ear Institute is a medical research nonprofit with a mission to restore hearing worldwide through research, teaching, and humanitarian efforts.

Admin. 23%  
FB: /houghear  
Twitter/X: @houghear

**8019 JDRF INTERNATIONAL, NORTHERN TEXAS AND OKLAHOMA CHAPTER**

JDRF is the leading global organization funding type 1 diabetes (T1D) research. Our mission is to cure, prevent and treat T1D and its complications.

Admin. 17%  
FB: /myjdrf  
Twitter/X: @jdrf

**8008 LEUKEMIA & LYMPHOMA SOCIETY**

The Leukemia & Lymphoma (LLS) mission: Cure leukemia, lymphoma, Hodgkin's disease and myeloma, and improve the quality of life of patients and their families.

Admin. 25%  
FB: /llsusa  
Twitter/X: @llsusa

**8055 LEUKEMIA RESEARCH FOUNDATION**

The Leukemia Research Foundation's mission is to cure leukemia by funding innovative research and to support patients and families.

Admin. 16%  
FB: /leukemiaresearch  
Twitter/X: @leukemiarf

**8062 THE LIFESHARE FOUNDATION**

The Foundation's focus is awareness of organ, eye, and tissue donation, support for transplant recipients, including those waiting and donor families, and research in donation.

Admin. 99%  
FB: /lifeshareok  
Twitter/X: @lifeshareok

**8020 LIMBS FOR LIFE FOUNDATION**

Provides prosthetic care for individuals who have no resources; raises awareness of challenges facing amputees; assists 2,000+ amputees in Oklahoma and across the U.S. annually.

Admin. 20%  
FB: /limbsforlife  
Twitter/X: @limbsforlife

**8051 MAKE-A-WISH FOUNDATION**

Together we create life changing wishes for children with critical illnesses.

Admin. 29%  
FB: /makeawishok  
Twitter/X: @makeawishok

**8010 MARCH OF DIMES**

March of Dimes fights for the health of moms and babies. We support research, lead programs, and provide education and advocacy to support every baby.

Admin. 25%  
FB: /marchofdimes  
Twitter/X: @marchofdimes

**8023 NAMI OKLAHOMA**

Improves the lives of individuals and families affected by mental illness through education, advocacy, and support.

Admin. 12%  
FB: /namioklahoma  
Twitter/X: @namioklahoma

**8013 NATIONAL MULTIPLE SCLEROSIS SOCIETY**

Providing programs and services to those affected by multiple sclerosis including financial assistance, education, information, wellness, research, referrals, support groups, and counseling.

Admin. 26%  
FB: /nationalmssociety  
Twitter/X: @mssociety

**8041 OKLAHOMA INSTITUTE FOR CHILD ADVOCACY**

OICA was established to create a strong advocacy network that would provide a voice for the needs of children and youth in Oklahoma.

Admin. 32%  
FB: /okchildadvocacy  
Twitter/X: @oklchildadv

**7555 OKLAHOMA PARKINSON'S ALLIANCE**

Inspiring hope and transforming life for people with Parkinson's in Oklahoma.

Admin. 24%  
FB: /oklahomapa

**8042 OKLAHOMA PROJECT WOMAN**

Providing access to free breast healthcare, mammograms, biopsies and surgeries for Oklahomans with no health insurance or any other way to receive this care.

Admin. 32%  
FB: /oklahomaprojectwoman

**8025 RONALD MCDONALD HOUSE CHARITIES OF OKLAHOMA CITY, INC.**

Providing a "home away-from-home" for families with seriously ill or injured children receiving medical treatment in the Oklahoma City area.

Admin. 32%  
FB: /rmhcok

**0407 SAMARITAN'S PURSE**

Christian relief organization led by Franklin Graham providing food, medicine, clothing, shelter and other emergency assistance to victims of war, poverty, disease, and natural disaster.

Admin. 11%

**8043 SPECIAL OLYMPICS OKLAHOMA**

Providing a year-round program of sports training and athletic competition in a variety of Olympic-type sports for children and adults with intellectual disabilities.

Admin. 7%  
FB: /specialolympicsoklahoma  
Twitter/X: @sook

## SUPPORTING MATERNAL WELL-BEING IN OUR COMMUNITY

An SCC charity, supported by contributions from state employees, is dedicated to enhancing our community's well-being by enhancing access to high-quality reproductive healthcare and ensuring the widespread availability of maternal health services that address social determinants of health.

**Since the start of 2024, this community-based program has welcomed 39 healthy newborns from participating mothers, with many more expected soon.**

The United States currently lags behind other developed nations in maternal mortality rates. Black women face a disproportionately higher risk, being 3 to 4 times more likely to succumb to pregnancy-related complications compared to white women and experiencing a higher incidence of premature births. It is imperative that all expectant individuals have access to safe, dignified maternal healthcare that promotes healthy pregnancies and deliveries.

Throughout the journey of pregnancy, as well as before and after childbirth, it is essential for every person to have access to quality healthcare services, information, and the necessary social and economic resources to support their overall health and well-being.

**8026 ST. JUDE CHILDREN'S RESEARCH HOSPITAL**

Researches, treats, and defeats childhood cancer and other life-threatening diseases. Families never receive a bill from St. Jude for treatment, travel, housing, or food.

Admin. 18%  
FB: /stjude  
Twitter/X: @stjude

**8016 SUSAN G. KOMEN**

Saves lives by meeting the most critical needs in our communities and investing in breakthrough research to prevent and cure breast cancer.

Admin. 38%  
FB: /susangkomen  
Twitter/X: @susangkomen

**8068 THE NAVIGATORS**

Advancing the gospel of Jesus and His kingdom into the nations through spiritual generations of laborers living and discipling among the lost and hurting.

Admin. 19%  
FB: /navigators  
Twitter/X: @thenavigators

**8047 THE TOBY KEITH FOUNDATION, INC.**

Encourages the health and happiness of pediatric cancer patients and operates OK Kids Korral, a cost free home for children battling cancer.

Admin. 8%  
FB: /thetobykeithfoundation  
Twitter/X: @tk\_foundation

**8069 VOICE OF THE MARTYRS**

Christian ministry aiding, equipping and encouraging over 4 million persecuted believers annually in 70-plus nations, bringing Christ's hope through shelter, medicines, Bibles, and training.

Admin. 19%  
FB: /vomusa  
Twitter/X: @vom\_usa

**8054 WIND & FIRE MC HEARTLAND HEAT CHAPTER 65**

We ride to provide for those affected by smoke and fire.

Admin. 3%  
FB: /windandfire.mokc

**0305 AMERICAN JEWISH WORLD SERVICE, INC.**

Inspired by the Jewish commitment to justice, we work to realize human rights and end poverty in Africa, Asia, Latin America, and the Caribbean.

Admin. 23%  
FB: /americanjewishworldservice  
Twitter/X: @ajaws

**0306 CHILDFUND INTERNATIONAL USA**

Helping deprived, excluded and vulnerable children have the capacity to become young adults and leaders who bring lasting and positive change to their communities.

Admin. 27%  
FB: /childfundinternational  
Twitter/X: @childfund

**0311 FEED MY STARVING CHILDREN**

Volunteers hand pack scientifically formulated meals for undernourished children, which are distributed to a network of 70+ partners in 60+ countries each.

Admin. 13%  
FB: /feedmystarvingchildren  
Twitter/X: @fmssc\_org

**0309 HEIFER INTERNATIONAL**

Our mission is ending hunger while caring for the Earth. Heifer provides appropriate livestock training and related services to small-scale farmers in communities worldwide.

Admin. 28%  
FB: /heiferinternational  
Twitter/X: @heifer

**0316 HELEN KELLER INTERNATIONAL**

Partners with communities that are striving to overcome longstanding cycles of poverty. Delivers the essential building blocks of good health, sound nutrition, and clear vision.

Admin. 12%  
FB: /helenkellerintl  
Twitter/X: @helenkellerintl

**0310 MAP INTERNATIONAL**

Answering the call to provide health and healing to a world in need, MAP International provides medicine and health supplies to people across the world.

Admin. 1%  
FB: /mapintl  
Twitter/X: @mapintl

**0339 PRISON FELLOWSHIP INTERNATIONAL**

We transform the lives of prisoners, their families, and victims through a global network of ministry partners.

Admin. 24%  
FB: /prisonfellowshipinternational  
Twitter/X: @pfiworldwide

**0326 SAVE THE CHILDREN FEDERATION INC.**

Save the Children does whatever it takes every day and in times of crisis, transforming children's lives and the future we share.

Admin. 14%  
FB: /savethechildren  
Twitter/X: @savethechildren

**0312 SEE INTERNATIONAL**

Provides eyecare services to break the cycle of hardship that preventable blindness causes, making patients, families, and communities healthier and stronger.

Admin. 24%  
FB: /seeinternational  
Twitter/X: @seeintl

**0338 THE SALVATION ARMY WORLD SERVICE OFFICE (SAWSO)**

We represent the interests of The Salvation Army U.S.A. Territories who work to improve health, economic, and spiritual conditions of the vulnerable throughout the world.

Admin. 3%  
FB: /saworldservice  
Twitter/X: @saworldservice

**0329 UNICEF USA**

Our Mission is to relentlessly pursue a more equitable world for every child. UNICEF won't stop until every child is healthy, educated, protected, and respected.

Admin. 10%  
FB: /unicef-usa  
Twitter/X: @unicefusa

# INTERNATIONAL FEDERATIONS

## America's Charities Federation

**0500 AMERICA'S CHARITIES**

Working to build strong communities. Addressing needs of children, families, communities by helping employers and employees support our member charities' programs.

Admin. 3%  
FB: /americascharitiesfederation  
Twitter/X: @amercharities

**0516 ALZHEIMER'S DISEASE RESEARCH**

Alzheimer's Disease Research is a program of BrightFocus Foundation funding exceptional scientific research worldwide to find a cure for Alzheimer's and provides valuable information to everyone.

Admin. 37%  
FB: /alzheimersresearch  
Twitter/X: @\_brightfocus

**0512 AMNESTY INTERNATIONAL USA**

Our history spans 60+ years and includes a presence in over 150 countries and 10 million supporters. We defend the human rights of people globally.

Admin. 29%  
FB: /amnestyusa  
Twitter/X: @amnesty

**0518 CURESEARCH FOR CHILDREN'S CANCER**

CureSearch funds research projects designed to find new and better therapies for children's cancer and hosts collaborative opportunities for leaders across the pediatric cancer ecosystem.

Admin. 34%  
FB: /curesearch  
Twitter/X: @curesearch

**0519 DIABETES RESEARCH & WELLNESS FOUNDATION**

To help find the cure for diabetes and until that goal is achieved, provide care needed to combat the life-threatening complications of this disease.

Admin. 7%  
FB: /drwfusa  
Twitter/X: @drfwfwellness

**0503 FEED THE CHILDREN**

A leading organization in the U.S. dedicated to ending hunger at home and internationally. We bring together caring individuals to serve children, families, and communities.

Admin. 8%  
FB: /feedthechildren

**0528 MULTIPLE SCLEROSIS ASSOCIATION OF AMERICA**

MSAA is a national nonprofit founded in 1970 dedicated to improving lives through support and direct services to individuals with MS, families, and care partners.

Admin. 43%  
FB: /msassociation  
Twitter/X: @msassociation

**0531 OVARIAN CANCER RESEARCH ALLIANCE**

Ovarian Cancer Research Alliance is the leading organization in the world fighting ovarian cancer on all fronts while supporting patients and their families.

Admin. 14%  
FB: /ocrahope  
Twitter/X: @ocrahope

**0510 WOUNDED WARRIOR PROJECT, INC.**

Transforming lives of America's injured post-9/11, military veterans, and their families through free programs supporting mental/physical/financial health and long-term rehabilitative care.

Admin. 24%  
FB: /wwp  
Twitter/X: @wwp

## Global Impact Federation

**0300 GLOBAL IMPACT**

Inspiring greater giving to foster critical humanitarian development and reduce global inequities; supporting international causes such as disaster response, global health, education and economic development.

Admin. 5%  
FB: /globalimpact.charity  
Twitter/X: @charity.org

**0313 ALIGHT**

Building a meaningful life for and with the displaced. Not simply addressing basic needs, but building a life filled with joy, dignity, connection, and purpose.

Admin. 11%  
FB: /wearealight  
Twitter/X: @we\_are\_alight



# OKLAHOMA CONSISTENTLY RANKS AS ONE OF THE HUNGRIEST STATES IN THE NATION

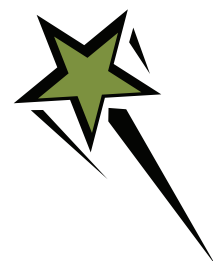
One SCC charity's vision is an Oklahoma where no one goes hungry and last year that charity distributed nearly 50 million pounds of food to residents living with hunger in central and western Oklahoma.

That includes Oklahomans like Amy. She visits the SCC charity monthly for groceries for her family.

*"Everyone here is always upbeat and friendly, it's always what I need to see the day I come in," Amy said. "I'm just so grateful to this place because sometimes we don't always make it to the end of the month and knowing that there's places like this that exist are just a miracle to me."*

The first time Amy visited the SCC charity, she left with a truck full of groceries.

*"Being able to get the amount of food we get here is amazing," Amy said. "Thank you for this blessing."*







## ACCESS TO ARTS EDUCATION IS A VITAL PIECE IN ANY CHILD'S DEVELOPMENT

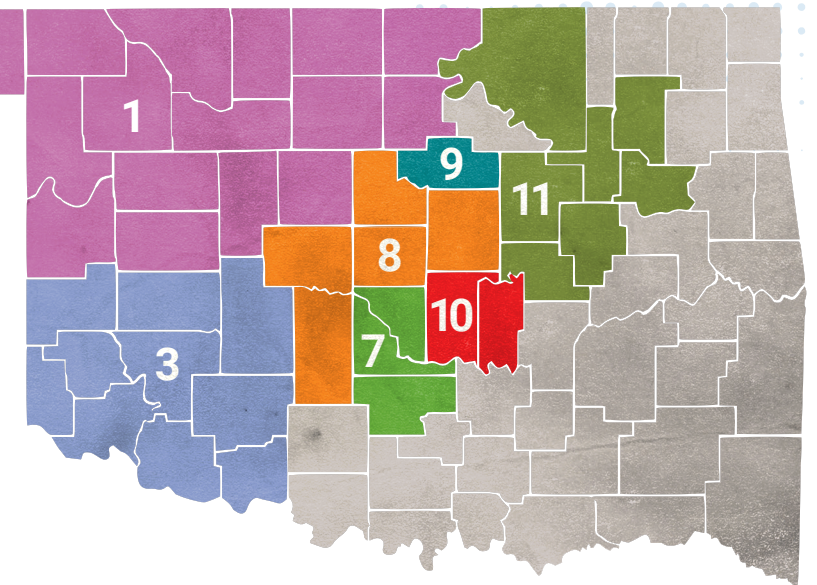
Research demonstrates that youth with regular exposure to the arts perform better academically, have higher class attendance rates and volunteer more often in the community than students who lack arts experiences.

Despite the indisputable benefits of arts education, not every Oklahoma student has access to cultural enrichment opportunities due to financial, geographic or other circumstances. SCC supporters of Allied Arts enhance access to the arts for children from low-income and rural households by helping provide free in-school programming, affordable enrollment rates for school break camps and financial assistance to participate in extracurricular activities.

Through its fieldtrip program, one SCC agency provides opportunities for students from low-income backgrounds to experience a museum setting – at no cost to schools. In offering free transportation, admission and educational activities onsite, the program fills a need by providing the only opportunity for many students to visit a museum. The accompanying activity is more than craft-making. The students are led through a critical-thinking exercise, encouraging discussion of the art in front of their peers. There are no right or wrong answers; students are emboldened to use their imagination as they observe different artworks in the gallery. Teachers have provided feedback that the experience translates to the classroom and helps non-verbal students find their voice.

## THROUGH THE SCC, YOU MAY GIVE TO CHARITIES IN COMMUNITIES THROUGHOUT OKLAHOMA.

SCC DISTRICTS ARE NUMBERED ON THE MAP. TO SUPPORT CHARITIES IN A DISTRICT, DESIGNATE THE AREA OF YOUR CHOICE USING THEIR FOUR-DIGIT CODE.



### DISTRICT 1:

**7350 UNITED WAY OF ENID & NORTHWEST OKLAHOMA**  
Alfalfa, Beaver, Blaine, Cimarron, Custer, Dewey, Ellis, Garfield, Grant, Harper, Kay, Kingfisher, Major, Roger Mills, Noble, Texas, Woods & Woodward

### DISTRICT 3:

**7550 UNITED WAY OF SOUTHWEST OKLAHOMA**  
Beckham, Caddo, Comanche, Cotton, Greer, Harmon, Jackson, Tillman, Kiowa & Washita

### DISTRICT 7:

**7100 UNITED WAY OF NORMAN**  
Cleveland, Garvin & McClain

### DISTRICT 8:

**7000 UNITED WAY OF CENTRAL OKLAHOMA**  
Canadian, Cleveland, Custer, Dewey, Grady, Kingfisher, Lincoln, Logan, McClain, Oklahoma & Washita

### DISTRICT 9:

**7800 UNITED WAY OF PAYNE COUNTY**  
Payne

### DISTRICT 10:

**7200 UNITED WAY OF POTTAWATOMIE COUNTY**  
Lincoln, Pottawatomie & Seminole

### DISTRICT 11:

**7400 TULSA AREA UNITED WAY**  
Creek, Okfuskee, Okmulgee, Osage, Rogers, Tulsa & Wagoner

# SCC LEADERSHIP GIVERS

The SCC gratefully recognizes its most generous contributors at the Millennium Club, Century Club, Meridian Club and Anniversary Club levels.

These members are making a significant impact on our community, our state and our world.

## MILLENNIUM CLUB MEMBERS

**\$1,500 AND MORE**

Erin Butler  
James Farha  
Rachel C. Holt  
Yancey Landrum  
Michael Monterastelli  
William Rogers

## CENTURY CLUB MEMBERS

**\$1,000 - \$1,499**

Jennifer Boyle  
Kathy Hart  
Thomas Patt  
Michelle Wynn

## MERIDIAN CLUB MEMBERS

**\$500 - \$999**

Taylor Aizenman  
Cynthia Knight  
Zakary Legarda

Fernando Lopez  
Jeannie Parsley  
Jack Schumpert  
Tiffany Wythe  
Paul Ziriach

## ANNIVERSARY CLUB MEMBERS

**\$180 - \$499**

John Bode  
Janice Booker  
Harlie Brinlee  
Kailey Carter  
Amanda Chrestensen  
Rusty Clark  
Carolyn Cole  
Andrea Crews  
David Dunn  
Molly Fagan  
Melanie Foster  
Kenneth Hamilton  
Amanda Hammond  
Lauren Hammonds Johnson  
Bradley Hand

Nora House  
Mark Howery  
Rhonda Jenkins  
Karen Kwok  
Mary Sue Martin  
Megan & Bjorn Oftedal  
Joseph Pierce  
Bruce Pitts  
Rhonda Powell  
Stacy Prince  
Jason Ramming  
Amber Romero  
Aldwyn Sappleton  
Vicky Scaggs  
Mike Sharp  
Joshua Smith  
Jennifer Swearingen  
Rebecca Welch  
Whitney Willis  
Emily Wright



# SCC TRAVELING TROPHIES



## Highest Per Capita



**OKLAHOMA**  
Board of Licensure for  
Professional Engineers  
& Land Surveyors

## Most Agency Contributions



## Largest Percentage Increase



**OKLAHOMA**  
ABLE Commission



The State Charitable Campaign appreciates the continuous support of the generous, community-minded organizations that sponsor the SCC Campaign Kickoff!



# 2023 LEADERSHIP GIVING BY AGENCY

STATE AGENCY	MILLENNIUM (\$1,500 and more)	CENTURY (\$1,000 - \$1,499)	MERIDIAN (\$500 - \$999)	ANNIVERSARY (\$180 - \$499)	TOTAL DONORS
Administrative Office of the Courts					1
Board of Tests-Alcohol & Drug Influence				2	2
Commissioners of the Land Office			1	1	4
District Attorneys Council			2	4	16
OETA					1
Office of Education Quality and Accountability				4	5
Office of Juvenile Affairs	2			2	7
Office of Management and Enterprise Services	5	4	9	5	27
Office of the Chief Medical Examiner				2	3
Office of the Lieutenant Governor				3	5
Office of the State Auditor & Inspector		1		1	2
Office of the State Treasurer				2	21
Oklahoma Abstractors Board					1
Oklahoma Accountancy Board				1	1
Oklahoma Arts Council					1
Oklahoma Attorney General's Office			2	3	7
Oklahoma Board of Medical Licensure & Supervision				1	2
Oklahoma Board of Nursing			1		1
Oklahoma Board of Private Vocational Schools				1	1
Oklahoma Bureau of Narcotics					1
Oklahoma Center for the Advancement of Science and Technology	1		2	2	5
Oklahoma Commission on Children and Youth				1	4
Oklahoma Conservation Commission			4	8	19
Oklahoma Corporation Commission	1		3	1	8
Oklahoma Court of Civil Appeals				3	3
Oklahoma Court of Criminal Appeals			1		1
Oklahoma Department of Agriculture, Food & Forestry	1			3	13
Oklahoma Department of Commerce			5	6	18
Oklahoma Department of Consumer Credit	1		2	4	17
Oklahoma Department of Corrections		3		1	5
Oklahoma Department of Education				3	6
Oklahoma Department of Emergency Management			1	5	9
Oklahoma Department of Environmental Quality	1	3	15	12	39
Oklahoma Department of Human Services	2	2	10	16	40
Oklahoma Department of Labor			3	1	3
Oklahoma Department of Libraries				1	4
Oklahoma Department of Mental Health and Substance Abuse Services		1		1	4

# 2023 LEADERSHIP GIVING BY AGENCY

STATE AGENCY	MILLENNIUM (\$1,500 and more)	CENTURY (\$1,000 - \$1,499)	MERIDIAN (\$500 - \$999)	ANNIVERSARY (\$180 - \$499)	TOTAL DONORS
Oklahoma Department of Mines				1	5
Oklahoma Department of Public Safety	1		1		4
Oklahoma Department of Rehabilitation Services		1	1	3	5
Oklahoma Department of Securities	1	1	2	3	9
Oklahoma Department of Transportation	1	2	8	7	19
Oklahoma Department of Veterans Affairs			1	3	4
Oklahoma Department of Wildlife Conservation	1		1	9	15
Oklahoma Election Board			1	6	7
Oklahoma Employee Benefits Department					1
Oklahoma Employment Security Commission			3	8	17
Oklahoma Firefighters Pension					2
Oklahoma Health Care Authority		1	11	21	66
Oklahoma House of Representatives	1	2	4	2	10
Oklahoma Industrial Finance Authority			1		1
Oklahoma Insurance Department			4	7	26
Oklahoma Lottery Commission					1
Oklahoma Medical Marijuana Authority			2	1	8
Oklahoma Military Department				3	9
Oklahoma Public Employees Retirement System			1	7	11
Oklahoma Real Estate Commission	1				1
Oklahoma State Board of Licensure for Professional Engineers & Land Surveyors		1	1	1	8
Oklahoma State Board of Pharmacy				3	4
Oklahoma State Bureau of Investigation	1		1	2	7
Oklahoma State Department of Health	3	1	14	16	51
Oklahoma State Regents for Higher Education			1	5	25
Oklahoma State Senate		1	1	14	22
Oklahoma Student Loan Authority	4	1	4	19	75
Oklahoma Tax Commission	1		6	5	16
Oklahoma Teachers' Retirement System	1	1	3	6	17
Oklahoma Turnpike Authority			2	2	8
Oklahoma Water Resources Board	1		4	11	21
Oklahoma Workers Compensation Court of Existing Claims					1
Oklahoma Workers Compensation Commission	1			2	4
OSU Board of Regents			1	1	2
State ABE Commission				2	4
Supreme Court of Oklahoma			1	2	3
Tobacco Settlement Endowment Trust			2	2	5

# INDEX OF CHARITIES

APPROVED CHARITIES ARE LISTED BELOW  
WITH THEIR FOUR-DIGIT SCC DESIGNATION CODES AND THE PAGE NUMBER  
WHERE THEY ARE INCLUDED IN THE GUIDE.

9100	Allied Arts	5	7018	Last Frontier Council- Boy Scouts of America	7
9101	Arts Council of Oklahoma City	5	7060	Latino Community Development Agency	7
9122	deadCenter Film	5	7019	Legal Aid Services of Oklahoma, Inc.	7
9104	Lyric Theatre of Oklahoma, Inc.	5	7309	Logan Community Services, Inc.	7
9120	Mabee-Gerrer Museum of Art	5	7306	Logan County Council on Aging	7
9123	National Cowboy & Western Heritage Museum	5	7072	Mental Health Association Oklahoma	7
9115	Oklahoma Children's Theatre	5	7030	Metropolitan Better Living Center Inc.	7
9102	Oklahoma City Ballet	5	7021	Moore Youth & Family Services, Inc.	7
9105	Oklahoma City Museum of Art, Inc.	5	7073	NewView Oklahoma	7
9106	Oklahoma City Philharmonic	5	7010	NorthCare	7
9110	Oklahoma Contemporary Arts Center	5	7022	NSO   Neighborhood Services Organization	7
9116	Oklahoma Shakespeare in the Park	5	7025	Oklahoma Foundation for the Disabled, Inc.	7
9117	Oklahoma Visual Arts Coalition	5	7027	Oklahoma Medical Research Foundation	7
9107	Science Museum Oklahoma	5	7049	Pivot, Inc.	8
9125	The Sooner Theatre/The Studio of the Sooner Theatre	5	7032	Positive Tomorrows	8
			7058	Possibilities, Inc.	8
7000	United Way of Central Oklahoma	6	7031	RSVP of Central OK	8
7012	211 Community Resource Line	6	7907	Russell-Murray Hospice, Inc.	8
7009	A Chance to Change	6	7071	Skyline	8
7004	Areawide Aging Agency, Inc.	6	7036	Special Care	8
7055	Bethesda, Inc.	6	7037	Sunbeam Family Services, Inc.	8
7007	Big Brothers Big Sisters of Oklahoma	6	7068	TEEM	8
7028	Boys & Girls Clubs of Oklahoma County	6	7076	The Care Center	9
7903	C.A.R.T. House	6	7033	The Salvation Army of Central Oklahoma	9
7050	Calm Waters Center for Children and Families	6	7321	The Saville Center	9
7016	Camp Fire Heart of Oklahoma	6	7319	Twin Cedars	9
7914	Canadian County 4-H	6	7039	Upward Transitions, Inc.	9
7913	Canadian County CASA, Inc.	6	7042	Urban League of Greater Oklahoma City, Inc.	9
7318	CASA For Kids, Inc.	6	7043	Variety Care, Inc.	9
7051	CASA of Oklahoma County, Inc.	6	7045	YMCA of Greater Oklahoma City	9
7006	Catholic Charities of the Archdiocese of Oklahoma City, Inc.	6	7911	Youth & Family Services, Inc.	9
			7046	YWCA Oklahoma City	9
7916	CFL   Center of Family Love	6			
7067	Circle of Care, Inc.	6	7100	United Way of Norman	9
7034	Citizens Caring for Children	6	7166	ABLE Community Based Services	9
7075	City Care Inc.	6	7126	Aging Services, Inc.	9
7052	Community Literacy Centers, Inc.	6	7103	Bethesda, Inc.	9
7917	Compassionate Sharing	6	7104	Big Brothers Big Sisters of Oklahoma	9
7013	Daily Living Centers	6	7148	Catholic Charities of the Archdiocese of Oklahoma City, Inc.	9
7054	D-DENT	6			
7024	Dale Rogers Training Center (DRTC)	7	7113	CCFI	9
7901	El Reno Blessing Baskets, Inc.	7	7122	Food and Shelter	9
7014	Employment And Residential Centers, Inc.	7	7139	Fostering Futures	9
7029	Girl Scouts Western Oklahoma	7	7134	Full Circle Adult Day Center Inc.	9
7317	God's Food Bank	7	7133	Mary Abbott Children's House	9
7070	Health Alliance for the Uninsured	7	7114	Meals on Wheels of Norman, Inc.	10
7066	Homeless Alliance	7	7121	South Central CASA of Oklahoma	10
7908	ICAN	7	7117	The Salvation Army of Cleveland and McClain Counties	10
7041	INTEGRIS Hospice House	7	7111	The Virtue Center	10



# INDEX OF CHARITIES

7138	Thunderbird Clubhouse	10	8042	Oklahoma Project Woman	13
7118	Transition House, Inc.	10	8025	Ronald McDonald House of Charities of Oklahoma City, Inc.	13
7120	Women's Resource Center, Inc.	10	0407	Samaritan's Purse	13
			8043	Special Olympics Oklahoma	13
7200	United Way of Pottawatomie County	10	8026	St. Jude Children's Research Hospital	14
7240	211 Community Resource Line	10	8016	Susan G. Komen	14
7235	Central Oklahoma Community Action Agency, Inc.	11	8068	The Navigators	14
7224	Last Frontier Council - Boy Scouts of America	11	8047	The Toby Keith Foundation	14
7214	Legal Aid Services of Oklahoma, Inc.	11	8069	Voice of the Martyrs	14
7230	Oklahoma 4-H Foundation	11	8054	Wind & Fire MC Heartland Heat Chapter 65	14
7205	Project: SAFE	11			
7232	South Central Industries, Inc.	11	0500	America's Charities	14
			0516	Alzheimer's Disease Research	14
9220	The Regional Food Bank of Oklahoma, Inc.	11	0512	Amnesty International USA	14
9222	BritVil Community Food Pantry	11	0518	CureSearch for Children's Cancer	14
9201	City Rescue Mission, Inc.	11	0519	Diabetes Research and Wellness Foundation	14
7015	Goodwill Central Oklahoma	11	0503	Feed the Children	14
9064	Infant Crisis Services	11	0528	Multiple Sclerosis Association of America	14
9203	JESUS HOUSE of OKC	11	0531	Ovarian Cancer Research Alliance	14
9227	OKC Metro Alliance	11	0510	Wounded Warrior Project, Inc.	14
8050	CHC: Creating Healthier Communities	11	0300	Global Impact	14
8027	Ability Connection Oklahoma	11	0313	Alight	14
8066	AIDS Research Foundation (amfAR)	11	0305	American Jewish World Service, Inc.	15
8004	Ally's House, Inc.	11	0306	ChildFund International USA	15
8064	American Liver Foundation	11	0311	Feed My Starving Children	15
8037	American Lung Association in Oklahoma	12	0309	Heifer International	15
8058	Autism Speaks	12	0316	Helen Keller International	15
8031	Bethany Children's Health Center	12	0310	MAP International	15
8056	Breast Cancer Research Foundation	12	0339	Prison Fellowship International	15
8059	Cavett Kids Foundation	12	0326	Save the Children Federation Inc.	15
8024	Children's Health Foundation	12	0312	SEE International	15
8006	Crohn's & Colitis Foundation Northern Texas/Oklahoma Chapter	12	0338	The Salvation Army World Service Office (SAWSO)	15
			0329	UNICEF USA	15
8005	Cystic Fibrosis Foundation	12			
8070	Doctors Without Borders USA	12			
8007	Epilepsy Foundation Oklahoma	12			
8036	Harold Hamm Diabetes Center	12			
8061	Hearts for Hearing Foundation	12			
8063	Hope Is Alive	12			
8071	Hough Ear Institute	12			
8019	JDRF International, Northern Texas and Oklahoma Chapter	12			
			8008	Leukemia & Lymphoma Society	12
			8055	Leukemia Research Foundation	12
			8062	LifeShare Foundation	12
			8020	Limbs for Life Foundation	12
			8051	Make-A-Wish Foundation	12
			8010	March of Dimes	12
			8023	NAMI Oklahoma	12
			8013	National Multiple Sclerosis Society	13
			8041	Oklahoma Institute for Child Advocacy	13
			7555	Oklahoma Parkinson's Alliance	13



# THANK YOU

FOR BUILDING A STRONGER COMMUNITY  
THROUGH YOUR GIFT TO THE SCC!



For More SCC Information, Visit:

[oklahoma.gov/omes/divisions/human-capital-management/  
employee-benefits/state-employee-charitable-campaign.html](http://oklahoma.gov/omes/divisions/human-capital-management/employee-benefits/state-employee-charitable-campaign.html)

For More Information, Contact The SCC Director:

1444 NW 28th Street

Oklahoma City, OK 73106

Phone: 405.236.8441

email: [scc@unitedwayokc.org](mailto:scc@unitedwayokc.org)

[unitedwayokc.org/state-charitable-campaign](http://unitedwayokc.org/state-charitable-campaign)

Payments Only:

P.O. Box 248919

Oklahoma City, OK 73124-8919