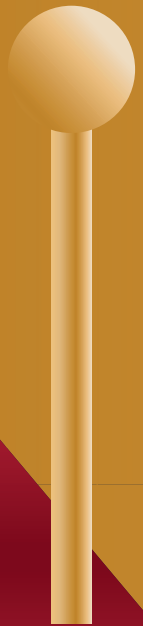
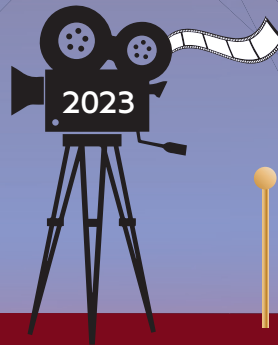


STATE CHARITABLE CAMPAIGN

LIGHTS  
CAMERA  
GIVE!



# TABLE OF CONTENTS

FREQUENTLY ASKED QUESTIONS ..... 3

LETTER FROM THE GOVERNOR..... 4

LETTER FROM THE SCC CHAIR..... 4

LOCAL FEDERATIONS ..... 5

STATEWIDE FEDERATIONS ..... 11

INTERNATIONAL FEDERATIONS..... 14

REGIONAL GIVING OPTIONS..... 17

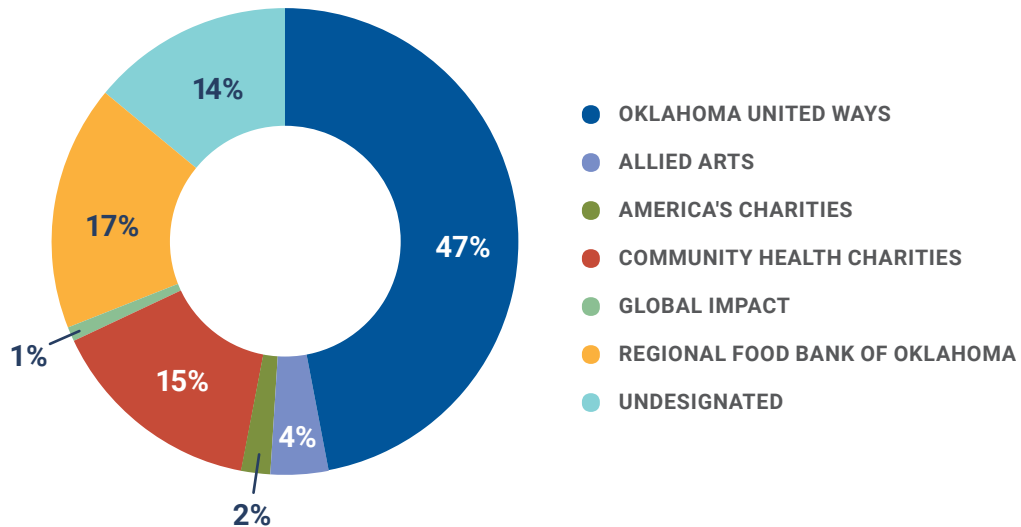
LEADERSHIP GIVING MEMBERS ..... 18

SCC TRAVELING TROPHIES ..... 19

LEADERSHIP GIVING BY AGENCY .....20

INDEX OF CHARITIES .....22

# 2023 SCC CONTRIBUTIONS





# FREQUENTLY ASKED QUESTIONS

## **What is the Oklahoma State Charitable Campaign?**

The Oklahoma State Charitable Campaign (SCC) is an annual unified fundraising effort that provides state employees with the opportunity to make donations to their favorite charitable organizations through the convenience of payroll deduction or one-time gifts. The SCC is governed by the Oversight Committee for State Employee Charitable Contributions (OCSECC), which is comprised of seven state employee appointees.

## **How do I give?**

During the annual campaign, all state employees have the opportunity to make charitable contributions via a provided pledge card. All donations, large or small, are welcome and greatly appreciated. We encourage you to consider the many needs in your community and make the most generous gift possible. Through payroll deductions, employees may divide the annual contribution into smaller, regular amounts which are deducted each pay period during the coming calendar year. One dollar per pay period is the minimum deduction for payroll deductions. While payroll deduction is the preferred method, contributions may also be made by check, cash, credit or debit card.

## **Who can I give to?**

This charity guide lists all the eligible charitable federations and their member charities. Through the SCC, you may designate your gift to federations or member charities by indicating choices on the pledge card. Each federation and charity is listed separately, with an assigned four-digit charity code (e.g., 1234) that must be used when making a selection to ensure that your contribution reaches the charity or charities you wish to support.

To support a federation and have your gift shared among all of its charities, choose the federation code as it appears preceding the federation name and description. To support an individual charity within a federation, select that charity's code as it appears preceding the charity name and description. Pledge cards returned with a donation but without charity code numbers will be counted as undesignated donations.

## **What happens to the undesignated donations?**

According to Oklahoma Statutes, undesignated money shall be distributed in the same proportion as designated dollars within the state of Oklahoma.

## **What is the administrative rate for the SCC?**

Administrative costs for the 2022 campaign were 10% of funds received. These funds provide for campaign materials creation and printing, postage and supplies, Loaned Executive support, coordinator training, campaign recognition, and professional staff. All federations share in the administrative costs proportionate to their designations in the campaign.

## **How do I connect with the charities?**

Throughout the charity guide, you will find the charities' social media accounts. Most member charities can also be found with a simple Google search.

# A Letter From the **GOVERNOR**

Dear friend,

I can't thank you enough for your public service to our great state, or for your participation in the annual State Charitable Campaign (SCC). Last year, your generous contributions helped us raise \$336,453, helping more than 250 organizations strengthen communities across Oklahoma.

These organizations are on the front lines of meeting the health needs and human service challenges facing some of our most vulnerable Oklahomans. The SCC helps those in need by providing meals, educational programs, medical care and even disaster aid.

Thanks to your continued generosity, many of our neighbors have received critical assistance from the organizations supported by the SCC. The Oklahoma Standard is truly alive and well.

Our goal for the 2023 campaign is to raise \$335,000 and I hope you will join me in supporting this worthy effort. Together, I am confident we can have our most successful year yet.

Once again, thank you for your generous contributions.

Sincerely,

J. Kevin Stitt  
Governor



# A Letter From the **SCC CHAIR**

The State Charitable Campaign (SCC) provides a great opportunity for state employees to contribute to accountable and capable charities that do vital work for many communities. The charities in the SCC not only help Oklahomans, but aid people in need at the national and international levels as well.

I know each community faces unique challenges, which makes me even more proud to know that state employees stepped up in 2022 and raised more than \$336,000. This year we have the chance to do it again. I know this can be accomplished with your generous support in helping us to reach our goal of \$335,000.

I greatly appreciate and applaud you for your heartfelt generosity towards those in need through your continued support of the SCC. With your pledge, you are changing lives and improving our communities.

Sincerely,

Secretary Blayne Arthur  
2023 State Charitable Campaign Chair



# FEDERATIONS

## Allied Arts Federation

**9100 ALLIED ARTS OF OKLAHOMA, INC.**  
Enriching lives through art and broadening support for arts education, healing arts, accessibility, and providing quality cultural programming to more people statewide.

**Admin. 15%**  
**FB: /alliedartsokc**  
**Twitter: @alliedartsokc**

### **9101 ARTS COUNCIL OF OKLAHOMA CITY**

Bringing the arts and the community together through free and low cost events and educational initiatives in central Oklahoma.

**Admin. 15%**  
**FB: /artscouncilokc**  
**Twitter: @artscouncilokc**

### **9102 BALLET OKLAHOMA, INC.**

Oklahoma City Ballet inspires its audience through classical and contemporary dance performances, a strong education program, and free community engagement programs and performance.

**Admin. 19%**  
**FB: /oklahomacityballet**  
**Twitter: @okcballet**

### **9103 CANTERBURY VOICES, INC.**

Canterbury Voices' programs transform lives, educate the future, and inspire communities through great choral music.

**Admin. 20%**  
**FB: /canterburyokc**  
**Twitter: @canterburyokc**

### **9122 DEADCENTER FILM FESTIVAL, INC.**

deadCenter exists to inspire, promote, and celebrate creativity and community through film.

**Admin. 22%**  
**FB: /deadcenterfilm**  
**Twitter: @deadcenter**

### **9104 LYRIC THEATRE OF OKLAHOMA, INC.**

Lyric Theatre of Oklahoma is the state's leading professional theatre producing musicals and plays of the highest quality, and serving 117,000 students statewide year round.

**Admin. 14%**  
**FB: /lyrictheatreofoklahoma**  
**Twitter: @lyrictheatre**

### **9120 MABEE-GERRER MUSEUM OF ART**

Lifelong learning center enriching lives through art by providing educational tours, classes, wellbeing workshops, family activities and unique art exhibits including two ancient Egyptian mummies.

**Admin. 1%**  
**FB: /mgmoa**  
**Twitter: @mabeegerrer**

### **9123 NATIONAL COWBOY & WESTERN HERITAGE MUSEUM**

Provides access to educational and cultural programming and training to diverse audiences of adults and children regardless of socio-economic background or ability.

**Admin. 18%**  
**FB: /ncwhm**  
**Twitter: @ncwhm**

### **9121 NORMAN FIREHOUSE ART CENTER**

The Norman Firehouse Art Center enriches our community by offering the highest quality visual arts exhibitions, experiences, and exhibitions.

**Admin. 36%**  
**FB: /normanfirehouse**  
**Twitter: @normanfirehouse**

### **9115 OKLAHOMA CHILDREN'S THEATRE, INC.**

Oklahoma Children's Theatre provides live theatre and interactive experiences for young audiences.

**Admin. 26%**  
**FB: /oklahomachildrenstheatre**

### **9105 OKLAHOMA CITY MUSEUM OF ART, INC.**

The Oklahoma City Museum of Art enriches lives through the visual arts with world-class exhibitions, a growing permanent collection, educational programs, and community outreach.

**Admin. 19%**  
**FB: /okcmoa**  
**Twitter: @okcmoa**

### **9110 OKLAHOMA CONTEMPORARY ARTS CENTER**

Oklahoma Contemporary provides arts education programs for youths and adults across many artistic disciplines and features free exhibitions that promote learning from living artists.

**Admin. 73%**  
**FB: /oklahomacontemporary**  
**Twitter: @okcontemporary**

### **9106 OKLAHOMA PHILHARMONIC SOCIETY INC.**

The mission of the Oklahoma City Philharmonic is to provide inspiration and joy for the community through orchestral music.

**Admin. 27%**  
**FB: /okcphilharmonic**  
**Twitter: @okc\_phil**

### **9116 OKLAHOMA SHAKESPEARE IN THE PARK**

To provide arts performance and education to the people of Oklahoma City and surrounding communities. Now in our 39th season of professional performing arts.

**Admin. 20%**  
**FB: /oklahomashakespeare**  
**Twitter: @okshakespeare**

### **9117 OKLAHOMA VISUAL ARTS COALITION**

Growing and developing Oklahoma's visual arts communities through education, connection, promotion, and funding.

**Admin. 15%**  
**FB: /okart**  
**Twitter: @ovac**

### **9111 OKLAHOMA YOUTH ORCHESTRAS**

By offering twelve ensembles and programs, we build artistic excellence and provide quality music education opportunities for students, and provide inspiring experience to our community.

**Admin. 12%**  
**FB: /okyouthorchestras**

### **9107 SCIENCE MUSEUM OKLAHOMA**

SMO encourages families to creatively explore the world and reveals the importance of science, art/culture through interactive exhibits, discovery-based activities, astronomy shows, and community outreach.

**Admin. 20%**  
**FB: /sciencemuseumoklahoma**  
**Twitter: @sciencemuseumok**

### **9125 THE SOONER THEATRE**

The Sooner Theatre changes lives, offers diverse perspectives, and creates a cultural connection to the community through the performing arts and performing arts education.

**Admin. 51%**  
**FB: /soonertheatrenorman**



## United Way of Central Oklahoma Federation INCLUDING Canadian and Logan Counties

### 7000 UNITED WAY OF CENTRAL OKLAHOMA

Building a stronger, healthier, more compassionate community through a network of 54 partner agencies and local donors who contributed over 17 million dollars in 2022.

Admin. 12%

FB: /unitedwayokc

Twitter: /unitedwayokc

### 7009 A CHANCE TO CHANGE FOUNDATION

A Chance to Change provides a continuum of care, including prevention, education, and outpatient counseling for individuals and families with mental health needs.

Admin. 16%

FB: /ACTC79

### 7004 AREAWIDE AGING AGENCY, INC.

Maintaining and advancing the dignity and independence of older adults through services such as nutrition, transportation, caregiver support, and a dedicated hotline for local resources.

Admin. 4%

FB: /areawideagingoklahoma

### 7055 BETHESDA

Healing Oklahoma Children from the trauma of childhood sexual abuse through therapy, educational outreach and prevention at no charge to clients. We serve all children in Oklahoma.

Admin. 18%

FB: /BethesdaInc

### 7007 BIG BROTHERS BIG SISTERS OF OKLAHOMA

Create and support one-to-one mentoring relationships that ignite the power and promise of youth.

Admin. 16%

FB: /bbbsokokc

### 7902 BOYS AND GIRLS CLUB OF DARLINGTON

Empowering youth to reach their full potential as productive and responsible citizens through providing tutoring and mentoring in a safe, culturally sensitive after school program.

Admin. 44%

### 7028 BOYS & GIRLS CLUBS OF OKLAHOMA COUNTY, INC.

A safe, positive place where youth spend out of school time with mentors and enrichment programs in academics, STEAM, well-being, sports, workforce development, and leadership

Admin. 5%

FB: /bgcokc

Twitter: /bgcokc

### 7050 CALM WATERS CENTER FOR CHILDREN AND FAMILIES

Helping children and families in their grief journey caused by death, divorce, or other significant loss.

Admin. 25%

FB: /calmwatersok

Twitter: /calmwatersok

### 7914 CANADIAN COUNTY 4-H

To promote, encourage, support, enrich, and financially assist 4-H programs through club and school enrichment in Canadian County, Oklahoma.

Admin. 21%

FB: /canadiancounty4h

### 7913 CANADIAN COUNTY CASA, INC.

Recruits and trains volunteers to advocate within the courts for the best interest of abused and/or neglected children to promote a safe, nurturing home environment.

Admin. 0%

FB: /canadiancountycasa

Twitter: CanCoCASA

### 7076 THE C.A.R.E. CENTER

The Care Center prevents child abuse and provides opportunities for the healing and hope for children in Oklahoma County.

Admin. 15%

FB: /CARECenterOK

Twitter: carecenterok

### 7903 C.A.R.T. HOUSE

To provide a safe, child-friendly environment for abused children to tell their story.

Admin. 17%

FB: /The CART House

### 7051 CASA OF OKLAHOMA COUNTY

Recruit, train and supervise volunteers who advocate for the best interests of children in foster care from Oklahoma County.

Admin. 23%

FB: /casaofokco

Twitter: casaofokco

### 7006 CATHOLIC CHARITIES OF THE ARCHDIOCESE OF OKLAHOMA CITY, INC.

Social services for children, adults, families; affordable housing; women/children homeless services; case management; disaster recovery; adoption/pregnancy services; counseling; immigration legal services; refugee resettlement.

Admin. 20%

FB: /ccaokc

Twitter: /ccaokc

### 7319 CENTRAL OKLAHOMA CAMP AND CONFERENCE CENTER, INC.

Providing outdoor recreation and camp experiences to children and adults with physical and intellectual disabilities and other nonprofit organizations.

Admin. 21%

FB: /makepromiseshappen

### 7067 CIRCLE OF CARE

Our mission is to provide Christian help and healing and hope to children and families to ensure a safe, healthy and spiritual future.

Admin. 13%

FB: /circleofcareok

Twitter: /circleofcareok

### 7034 CITIZENS CARING FOR CHILDREN

Citizens Caring for Children provides new clothing, books, personal hygiene kits, coats, car seats and backpacks to children living in foster care in central Oklahoma.

Admin. 9%

FB: /cccokc

### 7075 CITY CARE INC

Providing immediate relief and long-term support to Oklahoma City's most vulnerable populations through homeless services, permanent housing, and character-based, literacy-focused programs.

Admin. 22%

FB: /citycareokc

Twitter: CityCareOKC

### 7052 COMMUNITY LITERACY CENTERS, INC.

Community Literacy Center, Inc. provides ABE, ESL, HSE classes and volunteer workshops to Oklahoma County residents. Teaches literacy skills to over 800 adults each year.

Admin. 11%

FB: /communityliteracy

Twitter: LiteracyOKC

### 7917 COMPASSIONATE HANDS

Providing transportation for seniors and those with disabilities for Yukon, Oklahoma at no charge.

Admin. 12%

FB: /compassionatehands.yukon

### 7013 DAILY LIVING CENTERS

Leader in caregiver respite and Adult Day Services for elderly adults with disabilities. We provide health monitoring, meals, exercise, socialization, transportation, and medrides.

Admin. 23%

FB: /dailylivingcentersok

### 7024 DALE ROGERS TRAINING CENTER INC.

DRTC leads a disability-inclusive workforce and community, serving Oklahoma since 1953.

Admin. 5%

FB: /DRTC

Twitter: /DRTC

### 7054 DENTISTS FOR THE DISABLED AND ELDERLY IN NEED OF TREATMENT (D-DENT)

Improve the oral health of Oklahomans in need by providing free oral health education and free comprehensive dental care through a network of volunteer dentists

Admin. 15%

FB: /oklahomasmiles

**7014 EARC, INC.**

EARC provides a better quality of life and encourages greater independence to adults with intellectual disabilities through employment and residential services. (405) 347-7132. www.earcinc.org

**Admin. 9%**  
**FB: /earcinc**

**7901 EL RENO BLESSING BASKETS, INC.**

El Reno Blessing Baskets serves financially challenged families living in western Canadian County, providing tangible items such as food and other essential items.

**Admin. 2%**  
**FB: /Elrenoblessingbaskets**

**7029 GIRL SCOUTS WESTERN OKLAHOMA**

Girl Scouts Western Oklahoma builds girls of courage, confidence, and character who make the world a better place.

**Admin. 27%**  
**FB: /gwesternok**  
**Twitter: gwestok**

**7317 GOD'S FOOD BANK, INC.**

Feeds the hungry of Logan County through supplemental food assistance. We provide displaced families with food. We serve about 180 families each week.

**Admin. 12%**  
**FB: /GodsFoodBank**

**7015 GOODWILL INDUSTRIES OF CENTRAL OKLAHOMA, INC.**

By providing job placement and skills development programs, we help Oklahomans overcome challenges to employment and transform their lives through the power of work.

**Admin. 12%**  
**FB: /okgoodwill**  
**Twitter: okgoodwill**

**7070 HEALTH ALLIANCE FOR THE UNINSURED, INC.**

HAU assists with FREE medications, diagnostic testing, specialist care, and surgeries for low income, uninsured Oklahomans who receive healthcare at safety net clinics.

**Admin. 2%**  
**FB: HAUinOKC**  
**Twitter: Huninsured**

**7012 HEARTLINE, INC.**

Heartline connects Oklahomans with help, hope, and information 24 hours a day through phone and web based services, crisis intervention, and suicide prevention. 211 heartlineoklahoma.org

**Admin. 15%**  
**FB: /HeartLine.Inc.**  
**Twitter: /heartline**

**7066 HOMELESS ALLIANCE**

Ending homelessness by creating a continuum where agencies collaborate to provide housing, street outreach, healthcare, job training, counseling, drug treatment, veterans services, and basic needs.

**Admin. 5%**  
**FB: /homelessalliance**  
**Twitter: HomelessOKC**

**7041 INTEGRIS HOSPICE, INC.**

Caring for the terminally ill in home and inpatient settings. Services include medications, medical equipment, pain control, spiritual, emotional support, and grief services.

**Admin. 10%**  
**FB: /integrishealthOK**

**7908 INTERVENTION & CRISIS ADVOCACY NETWORK (ICAN)**

Provide 24-hour crisis intervention services for victims of domestic violence, sexual assault, and stalking including emergency shelter, support groups, court advocacy, and emergency transportation.

**Admin. 19%**  
**FB: /icandvsa**

**7018 LAST FRONTIER COUNCIL-BOY SCOUTS OF AMERICA**

Boy Scouts' youth development program prepares youth to make ethical choices over their lifetime, using various activities to address their physical, mental, and spiritual needs.

**Admin. 11%**  
**FB: /lastfrontiercouncil**

**7019 LEGAL AID SERVICES OF OKLAHOMA, INC.**

Partnering in the community to make equal justice for all a reality through free, high quality civil legal services for low income and elderly Oklahomans.

**Admin. 13%**  
**FB: /legalaidok**  
**Twitter: LegalAidSvcS\_OK**

**7309 LOGAN COMMUNITY SERVICES, INC.**

Providing outpatient counseling and drug and alcohol treatment to local residents as well as serving as an emergency youth shelter for displaced and homeless children.

**Admin. 40%**  
**FB: /ServingLogan**

**7306 LOGAN COUNTY COUNCIL OF AGING**

To improve the quality of life and independence of the elderly population through assistance with food, basic services, physical and financial needs in Logan County.

**Admin. 12%**  
**FB: /logancountycoa**

**7072 MENTAL HEALTH ASSOCIATION OKLAHOMA**

Mental Health Association Oklahoma is the state's premier boots-on-the-ground nonprofit whose expertise and work exists primarily at the intersection of mental illness and homelessness.

**Admin. 17%**  
**FB: /mhaokla**  
**Twitter: MHAOKLA**

**7030 METROPOLITAN BETTER LIVING CENTER**

To provide and enhance person-centered services to seniors and aging adults with cognitive and physical challenges and disabilities.

**Admin. 15%**  
**FB: /MBLCOKC**

**7905 MOBILE MEALS OF EL RENO, INC.**

Providing hot meals and routine, friendly interaction to approximately 150 residents in need, allowing them to stay in their homes and maintain health and independence.

**Admin. 14%**  
**FB: /elrenomobilemeals**

**7021 MOORE YOUTH & FAMILY SERVICES**

Provides community-based services including individual group family counseling assessments and referral psychoeducational groups, early intervention and prevention services for children, adolescents, and their families.

**Admin. 10%**

**7022 NEIGHBORHOOD SERVICES ORGANIZATION, INC.**

Providing temporary and permanent housing, nutrition, dental, case management, life skills, and self-sufficiency services for low-income and/or homeless individuals or families.

**Admin. 6%**  
**FB: /nsookc.org**  
**Twitter: /nsookc**

**7073 NEWVIEW OKLAHOMA INC.**

Empowering blind/low-vision Oklahomans by providing employment and rehabilitation services such as therapies, assistive/adaptive technologies, and Orientation & Mobility training to live a life independently without limits.

**Admin. 10%**  
**FB: /newviewoklahoma**

**7010 NORTHCARE**

NorthCare is an umbrella organization sheltering Oklahoma's most vulnerable populations, providing services and intervention in mental health services, addiction treatment, family crisis response, and more.

**Admin. 37%**  
**FB: /northcareokc**  
**Twitter: northcareokc**

**7025 OKLAHOMA FOUNDATION FOR THE DISABLED**

Adult day health providing life skills, social, and recreational activities for developmentally disabled adults including field trips with social integration and respite for client caregivers.

**Admin. 22%**  
**FB: /okfdokc**

**7027 OKLAHOMA MEDICAL RESEARCH FOUNDATION**

Independent non-profit research institute dedicated to discovering treatments and cures for human diseases such as cancer, aging, cardiovascular, and autoimmune.

**Admin. 5%**  
**FB: /OMRFOK**  
**Twitter: OMRF**

**7049 PIVOT, INC.**

Pivot Inc. advocates, educates, intervenes, and counsels youth and families to make a positive difference in their lives. We are a turning point for youth.

**Admin. 12%**  
**FB: pivotok**  
**Twitter: pivotok**

**7032 POSITIVE TOMORROWS, INC.**

Oklahoma's only school serving children experiencing homelessness, providing wrap-around services to meet the unique educational and social service needs of these families experiencing homelessness.

**Admin. 18%**  
**FB: /positivetomorrow**  
**Twitter: ptokc**

**7058 POSSIBILITIES INC.**

Possibilities strengthens the ability of people to work together for community change through training and mentoring programs for engagement, empowerment, and leadership in our communities.

**Admin. 19%**  
**FB: /Possibilitiesok**  
**Twitter: /PossibilitiesOK**

**7074 REMERGE OF OKLAHOMA COUNTY, INC.**

Providing an alternative to incarceration, ReMerge restores mothers and families through a comprehensive program of treatment, recovery, and hope; breaking the intergenerational cycles of incarceration.

**Admin. 26%**  
**FB: /remergeoklahoma**

**7031 RETIRED SENIOR VOLUNTEER PROGRAM**

Connecting older adults with meaningful and rewarding community volunteer opportunities.

**Admin. 0%**  
**FB: /rsvpokc**

**7907 RUSSELL-MURRAY HOSPICE, INC.**

Provides comfort care to terminally ill patients through a program of integrative services including medical, nursing, social work, spiritual counselors, hospice aides, volunteers, and counselors.

**Admin. 14%**  
**FB: /russell-murray-hospice**

**7033 THE SALVATION ARMY OF CENTRAL OKLAHOMA**

Providing hope and healing through emergency assistance program to residents of Central Oklahoma who find themselves in the midst of extremely difficult and personal situations.

**Admin. 17%**  
**FB: /SalArmyCentralOK**  
**Twitter: /SalvationArmyOK**

**7321 THE SAVILLE CENTER**

The mission of The Saville Center is to facilitate the protection, prevention and healing of victims of child abuse, and to promote the health of families.

**Admin. 22%**  
**FB: /savillecenter**  
**Twitter: @savillecenter**

**7071 SKYLINE URBAN MINISTRY**

Providing free groceries, eye care, and clothing resources to Oklahomans in need.

**Admin. 20%**  
**FB: /okcityskyline**

**7036 SPECIAL CARE**

Providing direct care, accredited education, speech, occupational, physical, and behavioral therapy programs for 200 children with and without disabilities, ages 6 weeks to 21 years.

**Admin. 10%**  
**FB: /specialcareinc**

**7037 SUNBEAM FAMILY SERVICES, INC.**

Sunbeam builds brighter futures with all children and families through early childhood education and wraparound services including foster care, mental health, and support for seniors.

**Admin. 13%**  
**FB: /SunbeamOKC**  
**Twitter: /SunbeamOKC**

**7039 UPWARD TRANSITIONS, INC.**

Serving those who are homeless or at risk of becoming homeless by providing case management and stabilizing resources to help meet their basic social needs.

**Admin. 11%**  
**FB: /UpwardTransitions**

**7042 URBAN LEAGUE OF GREATER OKLAHOMA CITY**

Serves families, teens, adults, the working poor and low/moderate income families in housing, financial literacy, workforce, family development, education, and community social justice.

**Admin. 20%**  
**FB: UrbanLeagueOK**  
**Twitter: UrbanLeagueOK**

**7043 VARIETY CARE**

Variety Care provides affordable, accessible healthcare for uninsured, underinsured, and low income Oklahomans including primary medical care, dental, vision, behavioral health, pediatrics, prenatal and family planning.

**Admin. 16%**  
**FB: /varietycare**  
**Twitter: varietycare.org**

**7045 YMCA OF GREATER OKLAHOMA CITY**

To offer programs that build health, spirit, mind, and body for all in the areas of healthy living, youth development, and social responsibility.

**Admin. 14%**  
**FB: /YMCAGREATEROKC**  
**Twitter: /ymcaokc**

**7046 YWCA OKLAHOMA CITY**

YWCA Oklahoma City provides shelter and crisis services in Oklahoma County to more than 4,000 victims of domestic violence and sexual assault and their children.

**Admin. 12%**  
**FB: /ywcaokc**  
**Twitter: ywcaokc**

**7911 YOUTH & FAMILY SERVICES, INC.**

Youth & Family Services provides emergency shelter, counseling, delinquency prevention, independent living and educational programs to children with special needs and at-risk youth.

**Admin. 6%**  
**FB: /yfsok**  
**Twitter: @hope\_thedog**



## United Way of Norman Federation

### 7100 UNITED WAY OF NORMAN, INC.

Norman's leader in addressing community issues for lasting change. Your investment focuses on education, health, and financial stability.

Admin. 12%

FB: /unitedwaynorman

Twitter: @unitedwaynorman

### 7166 ABLE COMMUNITY BASED SERVICES

Enables adults with intellectual and developmental disabilities to lead meaningful lives by providing housing and employment skill building opportunities to support independence.

Admin. 14%

FB: /ableinnorman

### 7126 AGING SERVICES, INC.

Enhances the lives and dignity of Cleveland County senior adults by providing programs, services and referrals that assist and promote healthy independence.

Admin. 4%

FB: /agingservicesofclevelandcounty

### 7103 BETHESDA, INC.

Healing Oklahoma children from the trauma of childhood sexual abuse through therapy, educational outreach, and prevention at no charge to clients. We serve all children in Oklahoma.

Admin. 18%

FB: /bethesdaic

### 7104 BIG BROTHERS BIG SISTERS OF OKLAHOMA

Create and support one-to-one mentoring relationships that ignite that power and promise of youth.

Admin. 13%

FB: /bbbsokstillwater

### 7107 CASP

Agency provides free 1:1 tutoring to K-5th grade students reading below grade level whose families meet income guidelines and attend public school in Cleveland County.

Admin. 9%

FB: /communityafterschoolprogram

Twitter: @normancasp

### 7148 CATHOLIC CHARITIES OF THE ARCHDIOCESE OF OKLAHOMA CITY, INC.

Social services for children, adults, families; affordable housing; women/children homeless services; case management; disaster recovery; adoption/pregnancy services; counseling; immigration legal services; refugee resettlement.

Admin. 20%

FB: /ccaokc

Twitter: @ccaokc

### 7113 CENTER FOR CHILDREN & FAMILIES, INC.

To heal children, empower youth and strengthen families, because every child deserves to grow up safe, nurtured, and loved.

Admin. 14%

FB: /HHSTRFS

NYYY: /HHSTRFS

### 7134 FULL CIRCLE ADULT DAY CENTER INC.

Providing adult day services that promote physical, cognitive, emotional and social wellbeing for seniors and disabled adults. Providing caregivers respite and support.

Admin. 8%

FB: /fullcircleadc

### 7135 GIRL SCOUTS WESTERN OKLAHOMA

Girl Scouts Western Oklahoma builds girls of courage, confidence, and character who make the world a better place.

Admin. 27%

FB: /gswesternok

Twitter: @gswestok

### 7109 LEGAL AID SERVICES OF OKLAHOMA, INC.

Partnering in the community to make equal justice for all a reality through free high quality civil legal services for low income and elderly Oklahomans.

Admin. 13%

FB: /legalaiddok

Twitter: @legalaidsvc\_ok

### 7133 MARY ABBOTT CHILDREN'S HOUSE

To serve child victims of abuse and neglect and witness to crime and drug endangered situations through forensic interviews, medical exams, advocacy and education promoting prevention.

Admin. 10%

FB: /machnorman

### 7144 MEALS ON WHEELS OF NORMAN, INC.

Dedicated volunteer drivers deliver nutritious meals Monday-Friday to the senior and homebound of our community, often serving as a lifeline to these isolated individuals.

Admin. 9%

FB: /mealsonwheelsnorman

Twitter: @mealsonwheelsok

### 7121 SOUTH CENTRAL CASA OF OKLAHOMA, INC

South Central Court Appointed Special Advocate, CASA, provides child advocacy for children in the child welfare system, speaking up for the best interests of children.

Admin. 16%

FB: /southcentralcasa

Twitter: @okiecasa

### 7138 THUNDERBIRD CLUBHOUSE BOARD, INC.

Providing support for adults recovering from mental illness through opportunities for employment, housing, education, socialization and wellness.

Admin. 7%

FB: /thunderbirdclubhouse

Twitter: @tblclubhouse

### 7118 TRANSITION HOUSE, INC.

Provide transitional living services to adults with serious mental illness through Transitional Living and Community Outreach Programs and Drop-In Center.

Admin. 20%

FB: /transitionhouseinc

Twitter: @thouse82

### 7111 THE VIRTUE CENTER

The Virtue Center is a place of help and hope for people facing addiction and mental health challenges.

Admin. 10%

FB: /thevirtuecenter

Twitter: @thevirtuecenter

### 7120 WOMEN'S RESOURCE CENTER

Providing crisis intervention, intimate partner violence shelter; rape crisis center; rape response advocates; S.A.N.E.; education and supportive services to victims of domestic and sexual violence.

Admin. 8%

FB: /wrcnorman

## United Way of Pottawatomie County Federation

### 7200 UNITED WAY OF POTTAWATOMIE COUNTY

Your investments support programs impacting health, education, and financial stability to build a stronger community.

Admin. 0%

FB: /unitedwaypottco

### 7213 BIG BROTHERS BIG SISTERS OF OKLAHOMA

Create and support one-to-one mentoring relationships that ignite that power and promise of youth.

Admin. 13%

FB: /bbbsokstillwater

### 7235 CENTRAL OKLAHOMA COMMUNITY ACTION AGENCY, INC.

COCAA provides assistance in six counties to low income clients. Services include rent, utility, food, prescriptions, transportation, housing, eyeglasses, referrals, and senior volunteer opportunities.

Admin. 19%

**7225 GIRL SCOUTS  
WESTERN OKLAHOMA**

Girl Scouts Western Oklahoma builds girls of courage, confidence, and character who make the world a better place.

**Admin. 27%**

**FB: /gswesternok**

**Twitter: @gswestok**



**7240 HEARTLINE, INC.**

HeartLine, connecting Oklahomans with help, hope, and information 24 hours a day through phone and web based services, crisis intervention and suicide prevention.

**Admin. 15%**

**FB: /heartline.inc**

**Twitter: @heartline**



**7224 LAST FRONTIER COUNCIL -  
BOY SCOUTS OF AMERICA**

Boy Scouts' youth development program prepares youth to make ethical choices over their lifetime, using various activities to address their physical, mental, and spiritual needs.

**Admin. 11%**

**FB: /lastfrontiercouncil**



**7214 LEGAL AID SERVICES  
OF OKLAHOMA, INC.**

Partnering in the community to make equal justice for all a reality through free high quality civil legal services for low income and elderly Oklahomans.

**Admin. 13%**

**FB: /legalaidok**

**Twitter: @legalaidsvcs\_ok**



**7230 POTTAWATOMIE COUNTY 4-H**

Utilize research based educational workshops and events to build life skills and abilities, enabling youth to become active and successful leaders in their community.

**Admin. 11%**

**FB: /pottawatomiecounty4h**



**7205 PROJECT: SAFE, INC.**

Project: SAFE provides emergency shelter and advocacy services to victims of domestic violence and sexual assault. Provides advocacy for safety, empowerment, healing, and freedom from abuse.

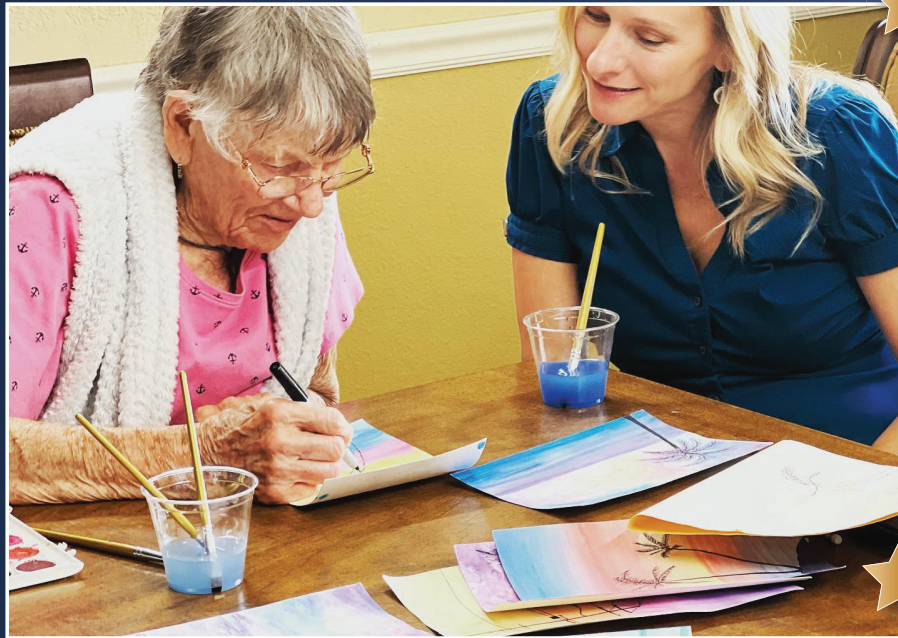
**Admin. 15%**

**FB: /projectsafe**

**7209 YMCA**

Committed to strengthening community by empowering young people of all ages and inspiring action in and across communities.

**Admin. 22%**



**Art is important at any age**, but it is especially important for seniors because it enhances mobility, combats loneliness, and sharpens brain function. This is why an SCC participating agency offers a Creative Aging Program, which goes to several senior assisted living facilities in the metro to teach art. SCC donations help fund this program. The program was created after the teaching artist saw a need for it. She says if the senior facilities had art, they seemed “degrading and childlike.” Creative Aging goes to more than a dozen facilities every month and serves over 200 seniors. One Creative Aging Participant is new to the art world because she never had art in school, but she says she enjoys it so much that she keeps coming back to each art class that is given. The teaching artist told us this is important because **“Art making is one of those things that can really heal them and process life transitions.”**

# STATE FEDERATIONS

## Regional Food Banks of Oklahoma Federation

### 9220 THE REGIONAL FOOD BANK OF OKLAHOMA

The Regional Food Bank of Oklahoma leads the fight against hunger in central and western Oklahoma by distributing 50 million pounds of food annually.

**Admin. 3%**

**FB: /regionalfoodbank**

**Twitter: @rfbo**

### 9222 BRITVIL COMMUNITY FOOD PANTRY

Our mission is to provide food to the hungry, regardless of race, color, religion or creed.

**Admin. 2%**

**FB: /britvilcommunityfoodpantry**

**Twitter: @britvilfood**

### 9201 CITY RESCUE MISSION, INC.

Solution based services ending homelessness; shelter, meals, clothing, recovery, education, employment, permanent housing and social services to 250 men, women, children, nightly at no charge.

**Admin. 21%**

**FB: /okcityrescue**

**Twitter: @okcityrescue**

### 9064 INFANT CRISIS SERVICES

Infant Crisis Services provides life sustaining formula, food, and diapers to babies and toddlers in times of crisis. Beause no baby should go hungry.

**Admin. 14%**

**FB: /infantcrisisservices**

**Twitter: @infantcrisis**

### 9203 JESUS HOUSE, INC.

Jesus House, an inner-city, non-denominational Christian outreach providing food and recovery to men and women experiencing addiction, mental disorders, and homelessness.

**Admin. 12%**

**FB: /jesushouseokc**

**Twitter: @jesushouseokc**

### 9227 OKC METRO ALLIANCE, INC.

OKC Metro Alliance assists Oklahomans who want to recover from substance abuse by providing long-term residential work, recovery and to offer alternatives to incarceration.

**Admin. 9%**

**FB: /okcmetroalliance**

## Creating Healthier Communities Federation

### 8050 CHC: CREATING HEALTHIER COMMUNITIES

Building stronger communities and taking action to improve health and wellbeing through giving opportunities, volunteering, and health resources.

**Admin. 6%**

**FB: /chcimpact**

**Twitter: @chcimpact**

### 8027 ABILITY CONNECTION OKLAHOMA

Providing services to enhance life quality of people with cerebral palsy and other physical disabilities; advancing independence, productivity, and full citizenship. United Cerebral Palsy Affiliate.

**Admin. 9%**

**FB: /abilityconectionoklahoma**

**Twitter: @abilityok**

### 8004 ALLY'S HOUSE

Providing financial assistance to Oklahoma children with cancer and their families. Processed over 1,500 financial assistance applications since 2004.

**Admin. 17%**

**FB: /allyshouse**

**Twitter: @allyshouse**

### 8001 ALZHEIMER'S ASSOCIATION, OKLAHOMA CHAPTER

Support groups, education, resources, outreach, care, consultations, advocacy, training, diversity, equity, inclusion, community awareness, referrals, partnerships, advancements, memories, forums, prevention, dementia, Alzheimer's, hope.

**Admin. 20%**

### 8002 AMERICAN CANCER SOCIETY, INC.

The American Cancer Society leads the way in research and offers lifesaving patient services like rides to treatment, lodging near hospitals and a 24/7 helpline.

**Admin. 16%**

**FB: /americancancersociety**

**Twitter: @americancancer**

### 8003 AMERICAN DIABETES ASSOCIATION

Committed to finding a cure for diabetes, improving diabetes care and providing information and support to help fight diabetes through research, community programs, and advocacy.

**Admin. 17%**

**FB: /americandiabetesassociation**

### 8064 AMERICAN LIVER FOUNDATION

The nation's leading non-profit that facilitates, advocates and promotes education, treatment and curing of liver disease.

**Admin. 15%**

**FB: /liverinfo**

**Twitter: @liverusa**

### 8037 AMERICAN LUNG ASSOCIATION

The American Lung Association is the leading organization working to save lives by improving lung health and preventing lung disease through research, education, and advocacy.

**Admin. 13%**

**FB: /americanlungok**

**Twitter: @americanlungok**

### 8044 ARTHRITIS FOUNDATION

The Arthritis Foundation pursues a cure for America's #1 cause of disability while championing the fight to conquer arthritis with science, resources, advocacy, and community.

**Admin. 16%**

**FB: /arthritis.org**

**Twitter: @arthritisdfn**

### 8058 AUTISM SPEAKS

Promotes lifelong solutions for needs of individuals with autism and families through advocacy and support, increasing ASD acceptance and advancing research into causes and better interventions.

**Admin. 22%**

**FB: /autismspeaks**

**Twitter: @autismspeaks**

### 8031 BETHANY CHILDREN'S HEALTH CENTER

Innovative leader in children's health and wellness; providing medical, rehabilitative, and education services focused on children with complex medical needs and physical disabilities.

**Admin. 5%**

**FB: /bethanychildrens**

**Twitter: @bethanychildrns**

### 8056 BREAST CANCER RESEARCH FOUNDATION

Every two minutes someone is diagnosed with breast cancer. Help the highest rated breast cancer organization advance our mission to fund research and save lives.

**Admin. 14%**

**FB: /thebreastcancerresearchfoundation**

**Twitter: @bcrcure**



**8059 CAVETT KIDS FOUNDATION**

Cavett Kids provides free camps and support for kids battling serious illnesses. In everything we do, we strive to develop character, coping, and connection.

**Admin. 32%**  
**FB: /cavettkids**  
**Twitter: @cavettkids**

**8024 CHILDREN'S HEALTH FOUNDATION**

Children's Health Foundation improves the health of children through its support of research, education, and care in Oklahoma.

**Admin. 12%**  
**FB: /okchildrenshealthfoundation**  
**Twitter: @okchf**

**8006 CROHN'S & COLITIS FOUNDATION, INC**

To cure Crohn's Disease and Ulcerative Colitis and to improve the quality of life of children and adults affected by these diseases.

**Admin. 20%**  
**FB: /ccfanorthexas**

**8005 CYSTIC FIBROSIS FOUNDATION**

Cure CF and provide all people with CF the opportunity to lead long fulfilling lives by funding research, partnering with the community, and advancing care.

**Admin. 13%**  
**FB: /cysticfibrosisfoundation**  
**Twitter: @cf\_foundation**

**8070 DOCTORS WITHOUT BORDERS USA**

An independent, international, medical humanitarian organization that delivers emergency aid to people affected by armed conflict, epidemics, and natural disasters in more than 70 countries.

**Admin. 13%**  
**FB: /doctorswithoutborders**  
**Twitter: @msf\_usa**

**8007 EPILEPSY FOUNDATION OF AMERICA**

Epilepsy Foundation's mission: stop seizures and SUDEP, find a cure, and overcome challenges created by epilepsy through education, advocacy, and research to accelerate new therapies.

**Admin. 18%**  
**FB: /okepilepsy**  
**Twitter: @okepilepsy**

**8066 THE FOUNDATION FOR AIDS RESEARCH**

Invests in innovative AIDS cure research; advocates to increase funding for research, prevention, treatment and to protect the rights of all people affected by HIV/AIDS.

**Admin. 32%**  
**FB: /amfarthefoundationforaidsresearch**  
**Twitter: @amfar**

**8036 HAROLD HAMM DIABETES CENTER**

Eradicating diabetes through the advancement of innovative research focused on progress towards a cure, dramatically improved patient care, and diabetes prevention, education, and strategies.

**Admin. 8%**  
**FB: /hammdiabetesctr**  
**Twitter: @hammdiabetesctr**

**8061 HEARTS FOR HEARING FOUNDATION**

Hearts for Hearing creates life-changing opportunities for children and adults with hearing loss to listen for a lifetime.

**Admin. 10%**  
**FB: /heartsforhearing**  
**Twitter: @hearts4hearing**

**8063 HOPE IS ALIVE MINISTRIES INC.**

Hope is Alive exists to radically change the lives of drug addicts, alcoholics, and those that love them through sober living mentoring homes.

**Admin. 20%**  
**FB: /hopeisaliveok**

**8071 HOUGH EAR INSTITUTE**

Hough Ear Institute is a medical research nonprofit with a mission to restore hearing worldwide through research, teaching, and humanitarian efforts.

**Admin. 45%**  
**FB: /houghear**  
**Twitter: @houghear**

**8022 HUNTINGTON'S DISEASE SOCIETY OF AMERICA**

The Huntington's Disease Society of America is a national, voluntary health organization dedicated to improving the lives of people with Huntington's Disease and their families.

**Admin. 13%**  
**FB: /hdsofa**  
**Twitter: @hdsofa**

**8019 JDRF INTERNATIONAL**

JDRF is the leading global organization funding type 1 diabetes (T1D) research. Our mission is to cure, prevent and treat T1D and its complications.

**Admin. 19%**  
**FB: /myjdrf**  
**Twitter: @jdrf**

**8008 LEUKEMIA & LYMPHOMA SOCIETY**

The Leukemia & Lymphoma (LLS) mission: Cure leukemia, lymphoma, Hodgkin's disease and myeloma, and improve the quality of life of patients and their families.

**Admin. 22%**  
**FB: /llsusa**  
**Twitter: @llsusa**

**8055 LEUKEMIA RESEARCH FOUNDATION**

Funding innovative research to find a cure for leukemia and helping to support patients and families.

**Admin. 18%**  
**FB: /leukemiaresearch**  
**Twitter: @leukemiarf**

**8062 THE LIFESHARE FOUNDATION**

The Foundation focus is awareness of organ, eye, and tissue donation, support for transplant recipients, including those waiting, and donor families, and research in donation.

**Admin. 45%**  
**FB: /lifeshareok**  
**Twitter: @lifeshareok**

**8020 LIMBS FOR LIFE**

Provides prosthetic care for individuals who have no resources; raises awareness of challenges facing amputees, assists 2400+ amputees in Oklahoma and across the U.S. annually.

**Admin. 14%**  
**FB: /limbsforlife**  
**Twitter: @limbsforlife**

**8051 MAKE-A-WISH OKLAHOMA**

Together we create life changing wishes for children with critical illnesses.

**Admin. 39%**  
**FB: /makeawishok**  
**Twitter: @makeawishok**

**8010 MARCH OF DIMES**

March of Dimes fights for the health of moms and babies. We support research, lead programs, and provide education and advocacy to support every baby.

**Admin. 20%**  
**FB: /marchofdimes**  
**Twitter: @marchofdimes**

**8023 NAMI OKLAHOMA**

Improves the lives of individuals and families affected by mental illness through education, advocacy, and support.

**Admin. 10%**  
**FB: /namioklahoma**  
**Twitter: @namioklahoma**

**8013 NATIONAL MULTIPLE SCLEROSIS SOCIETY**

Providing programs and services to those affected by multiple sclerosis including financial assistance, education, information, wellness, research, referrals, support groups, and counseling.

**Admin. 26%**  
**FB: /nationalmssociety**  
**Twitter: @mssociety**



# CAMPAIGN STORY

## 8068 THE NAVIGATORS

Advancing the gospel of Jesus and His kingdom into the nations through spiritual generations of laborers living and discipling among the lost and hurting.

Admin. 18%  
FB: /navigators  
Twitter: @thenavigators

## 8041 OKLAHOMA INSTITUTE FOR CHILD ADVOCACY

OICA raises awareness, takes action, and supports policy to improve the health and wellbeing of Oklahoma's children through advocacy trainings and educational youth programs.

Admin. 49%  
FB: /okchildadv  
Twitter: @oklachildadv

## 8042 OKLAHOMA PROJECT WOMAN

Providing access to free breast healthcare, mammograms, biopsies and surgeries for Oklahomans with no health insurance or any other way to receive this care.

Admin. 6%  
FB: /oklahomaprojectwoman.org

## 8025 RONALD MCDONALD HOUSE CHARITIES OF OKLAHOMA CITY, INC.

Providing a "home away from home" for families with seriously ill or injured children receiving medical treatment in the Oklahoma City area.

Admin. 26%  
FB: /rmhcok

## 8047 SAMARITAN'S PURSE

Christian relief organization led by Franklin Graham, providing food, medicine, clothing, shelter and other emergency assistance to victims of war, poverty, disease and natural disaster.

Admin. 11%  
FB: /samaritanspurse  
Twitter: @samaritanspurse

## 8032 SHARING TREE

Providing low-income families throughout Central Oklahoma with clothing and household items through a dignified no-cost shopping experience.

Admin. 25%  
FB: /sharingtreok

## 8040 SOUTHERN PLAINS TRIBAL HEALTH BOARD FOUNDATION

Improve tribal public health outcomes for American Indians through partnerships, advocacy, education, data, and research.

Admin. 17%  
FB: /spthb

## 8043 SPECIAL OLYMPICS OKLAHOMA

Dedicated to empowering individuals with intellectual disabilities to become physically fit, productive, respected members of society through sports, health and wellness programs, and leadership development.

Admin. 6%  
FB: /specialolympicsoklahoma  
Twitter: @sook

## 8026 ST. JUDE CHILDREN'S RESEARCH HOSPITAL

Researches and treats childhood cancer and other life-threatening diseases. Families never billed by St. Jude for treatment, travel, housing or food. Discoveries shared worldwide.

Admin. 17%  
FB: /stjude  
Twitter: @stjude

## 8047 THE TOBY KEITH FOUNDATION

Encourages the health and happiness of pediatric cancer patients and supports OK Kids Korral, a cost free home for children battling cancer.

Admin. 5%  
FB: /thetobykeithfoundation  
Twitter: @tk\_foundation

## 8069 VOICE OF THE MARTYRS

Christian ministry that aids, equips, and encourages over 4 million persecuted believers annually in 70-plus nations, bringing Christ's hope through shelter, medicines, Bibles, and training.

Admin. 13%  
FB: /vomusa  
Twitter: @vom\_usa

## 8067 WATER4, INC.

Water4 seeks to eradicate the world's water crisis through local, missional businesses. We envision a world where everyone has access to safe and living water.

Admin. 16%  
FB: /water4foundation  
Twitter: @water4

## 8054 WIND & FIRE MC HEARTLAND HEAT CHAPTER 65

We ride to provide for those affected by smoke and fire.

Admin. 3%



In Oklahoma, nearly 400,000 children receive free or reduced cost school meals. When summer break rolls around, many Oklahoma students lose access to their consistent source of nutritious meals. Last summer, one SCC charity's program prepared, packaged and distributed more than 252,000 meals and snacks to students at 103 sites across central and western Oklahoma.

On its busiest summer day, this SCC charity's production kitchen can produce more than 2,500 meals, 2,500 snacks and 500 breakfasts for Oklahoma children. The meals are sent to sites across central and western Oklahoma, where they are made available at no cost to any Oklahoma children up to the age of 18.

*"It's organized chaos," said an employee of the SCC charity. "But even on our busiest, most stressful days, I get to go home and say, 'I did something worthwhile today. I fed 2,500 kids today who may not have eaten otherwise.'"*

The meals are a hit with kids and their parents, like Shirley, as well.

*"During the summer the kids are out of school and that means we have to come up with two extra meals per day," Shirley said. "The Summer Feeding Program helps a lot."*





## America's Charities Federation

### 0500 AMERICA'S CHARITIES

Working to build strong communities. Addressing needs of children, families, communities by helping employers and employees support our member charities' programs.

**Admin. 2%**

**FB: /americascharitiesfederation**

**Twitter: @amercharities**

### 0512 AMNESTY INTERNATIONAL USA

Our history spans 60 years and includes a presence in over 70 countries and 10 million supporters. We defend the human rights of people globally.

**Admin. 21%**

**FB: /amnestyusa**

**Twitter: @amnesty**

### 0515 BREAST CANCER COALITION

Breast Cancer Coalition is dedicated to ending breast cancer through the power of grassroots action and advocacy.

**Admin. 11%**

**FB: /stopbreastcancer**

**Twitter: @nbcstopbc**

### 0516 BRIGHTFOCUS FOUNDATION

Driving innovative research worldwide and educating the public about Alzheimer's disease, risk factors, treatments, and coping strategies.

**Admin. 27%**

**FB: /brightfocusfoundation**

**Twitter: @\_brightfocus**

### 0518 CURESEARCH FOR CHILDREN'S CANCER

CureSearch funds research projects designed to find new and better therapies for children's cancer and hosts collaborative opportunities for leaders across the pediatric cancer ecosystem.

**Admin. 20%**

**FB: /curesearch**

**Twitter: @curesearch**

### 0519 DIABETES RESEARCH & WELLNESS FOUNDATION

Our goal is to fund scientific research into treatments and cure of diabetes. Conducts screenings, education programs to save lives from blindness, kidney failure, amputations.

**Admin. -1%**

**FB: /drwfusa**

**Twitter: @drwfwellness**

### 0503 FEED THE CHILDREN

A non-profit organization focused on alleviating childhood hunger in the U.S. and around the world.

**Admin. 4%**

**FB: /feedthechildren**

**Twitter: @feedthechildren**

### 0538 THE HUMANE SOCIETY OF THE UNITED STATES

Animal welfare organization confronting abuses in puppy mills, animal fighting, wildlife threats and more. Help us end all animal cruelty.

**Admin. 18%**

**FB: /humanesociety**

**Twitter: @humanesociety**

### 0527 MOTHERS AGAINST DRUNK DRIVING

Prevents tragedies through proven prevention strategies and provide supportive services at no charge to victims and survivors.

**Admin. 30%**

**FB: /madd.official**

**Twitter: @maddonline**

### 0528 MULTIPLE SCLEROSIS ASSOCIATION OF AMERICA

The Multiple Sclerosis Association of America is a leading resource for the entire MS community, improving lives today through vital services and support.

**Admin. 39%**

**FB: /msassociation**

**Twitter: @msassociation**

### 0531 THE OVARIAN CANCER RESEARCH FUND, INC.

Advancing research to prevent, treat, and defeat ovarian cancer; supporting women and their families after diagnosis; working to ensure ovarian cancer is a government priority.

**Admin. 17%**

**FB: /ocrahope**

**Twitter: @ocrahope**

### 0533 SOUTHERN POVERTY LAW CENTER

Using litigation, education, and other forms of advocacy, the SPLC works toward making the ideals of equal justice and equal opportunity a reality.

**Admin. 22%**

**FB: /splcenter**

**Twitter: @splcenter**

### 0510 WOUNDED WARRIOR PROJECT, INC.

Transforms the lives of America's injured post-9/11 military veterans and their families through free programs supporting mental, physical, and financial health, and long-term rehabilitative care.

**Admin. 25%**

**FB: /wwp**

**Twitter: @wwp**

## Global Impact Federation

### 0300 GLOBAL IMPACT

Inspiring greater giving to foster critical humanitarian development and reduce global inequities; supporting international causes such as disaster response, global health, education and economic development.

**Admin. 6%**

**FB: /globalimpact.charity**

**Twitter: @charity.org**

### 0313 ALIGHT

We work closely with refugees, trafficked persons, and economic migrants to co-design solutions that help them build full and fulfilling lives.

**Admin. 10%**

**FB: /wearealight**

**Twitter: @we\_are\_alight**

### 0305 AMERICAN JEWISH WORLD SERVICE, INC.

Inspired by the Jewish commitment to justice, we work to realize human rights and end poverty in Africa, Asia, Latin America, and the Caribbean.

**Admin. 22%**

**FB: /americanjewishworldservice**

**Twitter: @ajws**

### 0307 AMREF HEALTH AFRICA

We train local health workers and provide health services to meet the continent's dynamic and critical health needs.

**Admin. 6%**

**FB: /amrefusa**

**Twitter: @amrefusa**

### 0306 CHILDFUND INTERNATIONAL

Helping deprived, excluded and vulnerable children have the capacity to become young adults and leaders who bring lasting and positive change to their communities.

**Admin. 22%**

**FB: /childfundinternational**

**Twitter: @childfund**

**0311 FEED MY STARVING CHILDREN**

Volunteers hand pack scientifically formulated meals for undernourished children, which are distributed to a network of 75+ partners in 55+ countries each.

Admin. 11%  
FB: /feedmystarvingchildren  
Twitter: @fmsc\_org

**0309 HEIFER PROJECT INTERNATIONAL**

We work globally, alongside the communities we serve, providing livestock and training in sustainable agricultural practices to create the most favorable opportunity for families.

Admin. 28%  
FB: /heiferinternational  
Twitter: @heifer

**0316 HELEN KELLER INTERNATIONAL**

Partners with communities that are striving to overcome longstanding cycles of poverty. Delivers the essential building blocks of good health, sound nutrition and clear vision.

Admin. 14%  
FB: /helenkellerinternational  
Twitter: @helenkellerintl

**0310 MAP INTERNATIONAL**

Christian organization providing life-changing medicines and health supplies to people in need. Serving all people, regardless of religion, gender, race, nationality, or ethnic background.

Admin. 1%  
FB: /mapintl  
Twitter: @mapintl

**0338 THE SALVATION ARMY WORLD SERVICE OFFICE**

With a presence in 132 countries, we work alongside communities to improve the health, economic, educational and spiritual conditions of the world's most vulnerable.

Admin. 6%  
FB: /saworldservice  
Twitter: @saworldservice

**0326 SAVE THE CHILDREN FEDERATION INC.**

Save the Children does whatever it takes every day and in times of crisis, transforming children's lives and the future we share.

Admin. 14%  
FB: /savethechildren  
Twitter: @savethechildren

**0312 SEE INTERNATIONAL**

Committed to restoring sight and transforming lives of blind people in developing countries. Since 1974, nearly half a million people have received free eye surgery.

Admin. 40%  
FB: /seeinternational  
Twitter: @seeintl

**0329 UNICEF**

Reach children where needs are greatest, immediately respond when emergencies strike, invest in innovative solutions to the problems and advocate for their well being.

Admin. 17%  
FB: /unicef-usa  
Twitter: @unicefusa

**You can provide light in the darkness**

Oklahoma ranks second in the nation for women killed by men, according to the Violence Policy Center.

Olivia did everything in her power to stay alive. When she broke away after being held hostage for multiple days, a stranger called the police on her behalf.

Olivia was referred to an SCC Charity, where she received specialized forensic nursing and advocacy services. She was greeted by an expert team to address her medical, emotional and safety needs.

Safety was Olivia's primary concern, and the SCC Charity was there to provide wraparound services – one being secure housing. Her advocate arranged for her to have a room at the shelter, while assisting her in completing an application to obtain a Victim's Protective Order.

**Today, Olivia lives a life free from violence and has been reconnected with her family support system.**



## SUCCESS STORY



### Matt

A State Charitable Campaign Charity was founded to restore hearing worldwide through research, teaching and humanitarian efforts. It is pursuing the dream that all who have ears will hear.

The SCC Charity is a dedicated and skilled research organization with support staff who continue to bring about miracles of discovery. A clear success story about its ongoing efforts was realized in 2022, as the staff learned about the clinical results measured from a young man named Matt Zats, who had been treated with a hearing loss pill technology, NHPH-101.

After undergoing brain tumor surgery, Matt was left with severe hearing loss and catastrophic tinnitus. He fell into a deep depression and avoided leaving his home, as loud sounds and busy environments aggravated his tinnitus, causing severe pain.

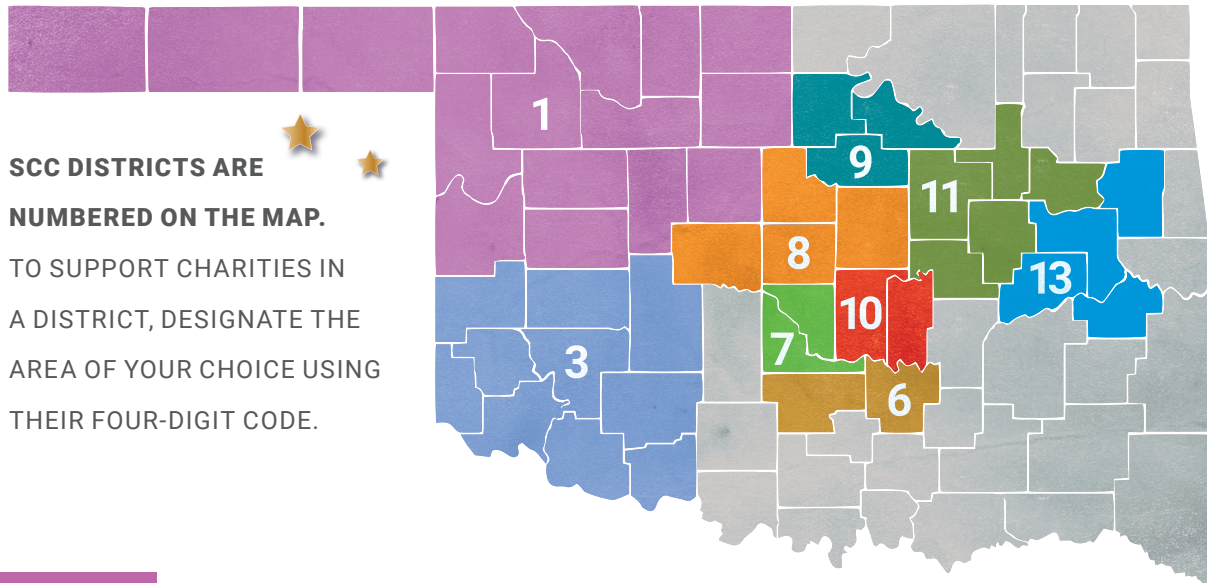
Following FDA-approved compassionate care use of NHPH-101, Matt's tinnitus was markedly reduced, and his hearing was significantly improved, dramatically restoring his quality of life.

Despite these momentous clinical advancements, the SCC Charity's scientists continue to innovate and evolve the therapeutic programs to unravel how to address a fundamental clinical need for a drug that treats or prevents hearing loss and widespread nerve degeneration induced by traumatic injuries or cognitive diseases, like Alzheimer's or Parkinson's.

Together, the SCC Charity believes it can outsmart the development and progression of hearing loss and tinnitus, intervene to stop cognitive decline and provide a better quality of life for millions worldwide.



# You May Give To Charities In Communities Throughout Oklahoma.



**SCC DISTRICTS ARE NUMBERED ON THE MAP.**  
TO SUPPORT CHARITIES IN A DISTRICT, DESIGNATE THE AREA OF YOUR CHOICE USING THEIR FOUR-DIGIT CODE.

## **DISTRICT 1:**

### **7350 UNITED WAY OF ENID & NORTHWEST OKLAHOMA**

Alfalfa, Blaine, Beaver, Cimarron, Custer, Dewey, Ellis, Garfield, Grant, Harper, Kingfisher, Major, Roger Mills, Texas, Woods & Woodward

## **DISTRICT 3:**

### **7550 UNITED WAY OF SOUTHWEST OKLAHOMA**

Beckham, Caddo, Comanche, Cotton, Greer, Harmon, Jackson, Tillman, Kiowa & Washita

## **DISTRICT 6:**

### **7600 ADA REGIONAL UNITED WAY**

Pontotoc and Garvin

## **DISTRICT 7:**

### **7100 UNITED WAY OF NORMAN**

Cleveland & McClain

## **DISTRICT 8:**

### **7000 UNITED WAY OF CENTRAL OKLAHOMA**

Canadian, Cleveland, Kingfisher, Lincoln, Logan, Oklahoma & Pottawatomie

## **DISTRICT 9:**

### **7800 UNITED WAY OF PAYNE COUNTY**

Noble, Pawnee & Payne

## **DISTRICT 10:**

### **7200 UNITED WAY OF POTTAWATOMIE COUNTY**

Pottawatomie & Seminole

## **DISTRICT 11:**

### **7400 TULSA AREA UNITED WAY**

Creek, Okfuskee, Okmulgee, Tulsa & Wagoner

## **DISTRICT 13:**

### **7750 LAKE AREA UNITED WAY**

Cherokee, Haskell, McIntosh, Muskogee, Okmulgee & Wagoner

# LEADERSHIP GIVERS

The SCC gratefully recognizes its most generous contributors at the Millennium Club, Century Club, Meridian Club and Anniversary Club levels.

These members are making a significant impact on our community, our state and our world.

## MILLENNIUM CLUB MEMBERS

### \$1,500 AND MORE

Mr. Brian Altenhofel  
Zachary Bradley  
Mrs. Erin Butler  
Ms. Paula Christiansen  
Mr. Kevin Corbett  
James Farha  
Ms. Samantha Galloway  
Teresa Green  
Terry & Roberta Hale  
Ms. Melanie Hall  
Dr. Jennifer Han  
Ms. Kathy Hart  
Mrs. Rachel Holt  
Rachel Klein  
Mr. Yancey Landrum  
Mr. John Langford  
Bryan Ramsey Sr.  
Mr. Keith Reed  
Mr. William A. Rogers  
J.D. Strong  
Mr Jon Wallace Vandiver  
Ms. Marsheila Ward  
Mark & Gale Wood

## CENTURY CLUB MEMBERS

### \$1,000 - \$1,499

Mrs. Julie Erin Bisbee  
Mr. Scott Carmack  
Mr. Bryce Fair  
Whitney Ann Herzog Scimeca  
Cathy Menefee  
Mr. Don Morris  
Ms. Christine Patton  
Ms. Paula Root  
Sabrina R Schroeder  
Mrs. Grace Shelton-Walker  
Phillis Spell  
John & Kip Suter  
Mr. Byron Waltman  
Michelle Wynn

## MERIDIAN CLUB MEMBERS

### \$500 - \$999

Ms. Judith Abrams  
Ms. Lisa Austin  
Ms. Brandy Bahm  
Ms. Nadine Beat-Walter  
Mr. Greg Blocker  
Mrs. Kathryn Boyle Brewer  
Ms. Ellen Buettner  
Ms. Peggy Byerly  
Ms. Megan R Cannon  
Phillip Carey  
Victor & Rhonda Carneiro  
Mr. Dustin Ray Carney  
Ms. Lauren Carter Ford  
Dr. Ginger Clayton  
Mrs. Lee Cohlmiia  
Ms. Kandi Copeland  
Ms. Julie Cunningham  
Ms. Kelly Dixon  
Mrs. Lisa Foster  
Jeffrey Franklin  
Ms. Kim Y. Hamilton  
Mr. William A. Hancock  
Ms. Jerri L. Hargis  
Ms. Brooke Harter  
Ms. Erin Hatfield  
Kari Hawkins  
Amy Heath  
Mrs. Sara Ivey  
John W Johnson  
Ms. Lindsey Kanaly  
Ms. Laura Kimmel  
Ms. Cynthia Knight  
Mr. Trey Lam  
Ms. Elizabeth Logan  
Mr. Fernando Lopez  
Dan Luton  
Mr. Austin Marshall  
Ms. Maria Maule  
Ms. Marilyn McIntyre  
Michael & Kathryn McNutt  
Mrs. Susan R. Mensik

Linda Monroe  
Deanne Moore  
Mrs. Jennifer Mullins  
Ms. Martina Ordonez  
Christine Alice Picart  
Ms. Lesia K. Pollard  
Ms. Nina Pratt  
Ms. Stacie Rathbun  
Ms. Jahkia Robinson  
Mr. Patrick Rosch  
Ms. Johanna Schneider  
Ms. Kylie Schrock  
Mr. Roland D. Sison  
Ms. Denise Slattery  
Ms. Julia Southwick  
Ms. Barbara Startz  
David Thele  
Ms. Brittany Thompson  
Mr. Paul Ziriaux

## ANNIVERSARY CLUB MEMBERS

### \$180 - \$499

Ms. Angelika Bajo  
Ms. Renee Banks  
Mr. Ryan L. Bates  
Ms. Marisa Mari Belknap  
Ms. Christine Bell  
Mrs. Rena Bigby  
Ms. Becky Blevins  
Mr. John Paul Bode  
Ms. Lisa Boyd  
Ms. Harlie Brinlee  
Mrs. Tressa M. Brooker  
Mr. Don P. Brown  
Mrs. Debra Buchanan  
Ms. Katherine Burum  
Ms. Diana Byrd  
Mr. Jonathan Cannon  
Mrs. Kathalene Carden-Cummings  
Ms. Mariah Carter  
Andy Chase  
Mr. Rusty Clark

Ms. Carolyn M. Cole  
Mr. David Couch  
Mr. Matthew Craig  
Mrs. Andrea Crews  
Mr. Kenneth Cunningham  
Mrs. Annie Daniel  
Mrs. Nikki Davis  
Mr. James Decker  
Ms. Kris Dillon  
Ms. Tewanna Edwards  
Mr. Eric M. Epplin  
Sheneka D Ezell  
Mrs. Cynthia J. Faulkner  
Eric Fiorentino  
Ms. Elizabeth Foster  
Mrs. Melanie Foster  
Mrs. Karen Franklin  
Mr. Joe Freeman  
Ms. Amber Frost  
Matthew Gaylor  
Denny George  
Mr. Jimmy D. Givens  
Ms. Rebecca Gooch  
Mrs. Andrea Hamilton  
Ms. Amanda A. Hammond  
Ms. Lauren E. Hammonds Johnson  
Kristina K Hardin  
Mr. Samuel Hardin  
Mr. Jacob Hernandez  
Ms. Ashleigh Madison Hines  
Mrs. Carla Hipkins  
Ms. Jamie Horton  
Ms. Nora A. House  
Mr. Mark D. Howery  
Mrs. Kristi Ice  
Ms. Kenia Isaacs  
Ms. Corey Jager  
Ms. Rhonda Jenkins  
Ms. Cheri Jensen  
Mrs. Lori Johnson  
Ms. Patricia Johnson  
Teresa P. Kelly  
Ms. Erin Kennedy



Mrs. Deborah J Kennington  
 Michael Kimball  
 Mr. Brent Kisling  
 Mr. William Kizer  
 Mrs. Lisa Knauf Owen  
 Mr. Thomas Larson  
 Mrs. Tommi Ledoux  
 Mr. Anthony Lee  
 Katherine Lenhart  
 Ms. Toni J LoVecchio  
 Jami Majors  
 Ms. Jessica Malloy  
 Jim Marlatt  
 Mrs. Suma Mathew  
 Ms. Stephanie Mavredes  
 Dr. Michelle McCargish  
 Ms. Elizabeth McCaskill  
 Ms. Kimberly McLeod  
 Mrs. Norma McRae  
 Ms. Jacqueline Mesarick  
 Ms. Holly Mills  
 Ms. Misha Mohr  
 Mrs. LaRonda Molina  
 Mrs. Karen Nichols  
 Mrs. Amy Kay Nichols

Ms. Yvonne Deanne Nunn  
 Ms. Molly O'Connor  
 Ms. Tracy R. O'Shannon  
 Mrs. Jeannie Parsley  
 Mr. Lance Phillips  
 Lt. Governor Matt Pinnell  
 Mrs. Rhonda Powell  
 Ms. Shannon Ramcharan  
 Mr. Monty Ramming  
 Mr. Jason Ramming  
 Mr. Kristian Ramos  
 Ms. Cynthia Reisman  
 Mr. Harvey Reynolds  
 Mr. Josh Richards  
 Ms. Sharon Robinson  
 Ms. Audrey Rockwell  
 Mr. Aldwyn Sappleton  
 Ms. Tammy Sawatzky  
 Ms. Vicky Scaggs  
 Mrs. Maggie Schemmer  
 Ms. Mary Carol Schovanec  
 Mr. Jack Schumpert  
 Mr. Richard Schwalbach  
 Ms. Solina Y Searcy-Martin  
 Lauren Seidensticker

Ms. Ramsey Shanta  
 Mr. William M. Sharp  
 Ms Cindy Simpkins  
 Ms. Brandi Smith  
 Mr. Chris Smith  
 Ms. Deborah Smith  
 Mr. Joshua Smith  
 Ms. Kirby Smith  
 Mrs. Sarita Smith  
 Sidney M Smith-McCormick  
 Ms. Maranda Lee Spears  
 Mr. Ron Stangeland  
 Mr. Matthew Ryan Stangl  
 Ms. Teresa Staples  
 Mrs. Tracy Lynn Steveson  
 Bevan Stockdell  
 Michelle Strain  
 Ms. Brenda Sullivan  
 Mrs. Jennifer L. Swearingen  
 Mrs. Emily Sweet  
 Ms. Holly Taber  
 Carole Ellen Teaford  
 Nancy Thiemann  
 Mr. John L. Thomas  
 Mrs. Lisa G. Thompson

Mrs. Francia Thompson  
 Mrs. Carole Tomlin  
 Mr. & Mrs. Brooks Trammel  
 Mrs. Tracey Truitt  
 Mrs. Sally Tucker  
 Mr. Dan Vossen  
 Mrs. Heather Walter  
 Mr. John Lyle Walters Jr.  
 Ms. Jessica Ward  
 Ms. Phil Weiss  
 Mrs. Stephanie White  
 Tamika White  
 Mrs. Charmalet Williams  
 Mr. Stacey Williams  
 Mrs. Patrice Williams  
 Ms. Cynthia Williamson  
 Meleia Williamson  
 Ms. Stacie R. Willis  
 Mrs. Shellie Willoughby  
 Ms. Meredith Wolfe  
 Ms. Mary Elizabeth Wood  
 Mr. Nathanael Edward  
 Worthington  
 Mr. Justin Wright  
 Mr. Malcolm Zachariah

# TRAVELING TROPHIES

## Most Agency Contributions



**OKLAHOMA**  
 Office of Management  
 & Enterprise Services

## Highest Per Capita

OKLAHOMA STATE BOARD OF LICENSURE  
 FOR PROFESSIONAL ENGINEERS  
 & LAND SURVEYORS

## Largest Percentage Increase



STATE OF OKLAHOMA  
 HOUSE of REPRESENTATIVES

**The State Charitable Campaign appreciates the continuous support of the generous, community-minded organizations that sponsor the SCC Campaign Kickoff!**

**Gold Sponsor**  
**OKLAHOMA'S CREDIT UNION**

**Silver Sponsor**  
**OPEA**

# LEADERSHIP GIVING BY AGENCY

STATE AGENCY	MILLENNIUM (\$1,500 and more)	CENTURY (\$1,000 - \$1,499)	MERIDIAN (\$500 - \$999)	ANNIVERSARY (\$180 - \$499)	TOTAL DONORS
Administrative Office of the Courts					1
Board of Tests-Alcohol & Drug Influence				1	2
Commissioners of the Land Office		1	2	4	7
Construction Industries Board				1	1
District Attorneys Council		1	1	4	13
Office of Education Quality and Accountability				7	8
Office of Juvenile Affairs	2		1	2	8
Office of Management and Enterprise Services	5	4	7	14	35
Office of the Chief Medical Examiner				2	3
Office of the Lieutenant Governor				3	3
Office of the State Auditor & Inspector				3	3
Oklahoma Accountancy Board					10
Oklahoma Arts Council				1	1
Oklahoma Attorney General's Office		2	1	2	7
Oklahoma Banking Department					1
Oklahoma Board of Medical Licensure and Supervision					1
Oklahoma Board of Private Vocational School				1	1
Oklahoma Center for the Advancement of Science and Technology		1	3	1	7
Oklahoma Commission on Children and Youth		1	1		9
Oklahoma Conservation Commission			1	13	16
Oklahoma Corporation Commission	1		3	2	6
Oklahoma Court of Civil Appeals				2	4
Oklahoma Court of Criminal Appeals			1		1
Oklahoma Department of Agriculture, Food and Forestry					1
Oklahoma Department of Commerce		1	3	14	27
Oklahoma Department of Consumer Credit	1		2	3	9
Oklahoma Department of Corrections			2	5	9
Oklahoma Department of Education	1		1	11	64
Oklahoma Department of Emergency Management			1	2	3
Oklahoma Department of Environmental Quality		2	11	18	42
Oklahoma Department of Human Services	3	4	13	23	65
Oklahoma Department of Labor			1	1	4
Oklahoma Department of Mental Health and Substance Abuse Services			2	2	6
Oklahoma Department of Public Safety			2	1	3
Oklahoma Department of Rehabilitation Services			3	4	9
Oklahoma Department of Securities	2		2	2	6

# LEADERSHIP GIVING BY AGENCY

STATE AGENCY	MILLENNIUM (\$1,500 and more)	CENTURY (\$1,000 - \$1,499)	MERIDIAN (\$500 - \$999)	ANNIVERSARY (\$180 - \$499)	TOTAL DONORS
Oklahoma Department of Transportation	1		9	4	15
Oklahoma Department of Veterans Affairs			1	1	2
Oklahoma Department of Wildlife Conservation	1		1	15	21
Oklahoma Election Board			2	5	7
Oklahoma Employment Security Commission			2	2	6
Oklahoma Firefighters Pension					2
Oklahoma Health Care Authority	1	1	8	34	99
Oklahoma House of Representatives		1	2	5	16
Oklahoma Industrial Finance Authority			1		1
Oklahoma Insurance Department	1			6	21
Oklahoma Law Enforcement Retirement Board				3	5
Oklahoma Lottery Commission					1
Oklahoma Medical Marijuana Authority		1	2	4	23
Oklahoma Military Department			1		1
Oklahoma Public Employees Retirement System				7	19
Oklahoma Real Estate Commission				1	1
Oklahoma School of Science and Math				4	10
Oklahoma State Board of Examiners for Long-Term Care Administrators		1	1	3	
Oklahoma State Board of Licensure for Professional Engineers & Land Surveyors	1		1	1	9
Oklahoma State Board of Pharmacy			1	2	5
Oklahoma State Bureau of Investigation		2	1	5	9
Oklahoma State Department of Health	3	1	6	13	29
Oklahoma State Regents for Higher Education		1	1	7	29
Oklahoma State Senate		1	1	22	31
Oklahoma Student Loan Authority	5	1	3	20	81
Oklahoma Tax Commission	1			14	25
Oklahoma Teachers Retirement System	1	1	2	7	20
Oklahoma Tourism and Recreation Department		1	1	1	4
Oklahoma Turnpike Authority			2	8	13
Oklahoma Water Resources Board	1	1	3	17	29
Oklahoma Workers Compensation Court of Existing Claims					1
Oklahoma Workers Compensation Commission	1			3	5
State ABLE Commission				1	1
Supreme Court of Oklahoma			1	1	4
Tobacco Settlement Endowment Trust		1	1	4	8

# OF CHARITIES

APPROVED CHARITIES ARE LISTED BELOW  
WITH THEIR FOUR-DIGIT SCC DESIGNATION CODES AND THE PAGE NUMBER  
WHERE THEY ARE INCLUDED IN THE GUIDE.

9100	<b>Allied Arts</b>	5	7041	<b>INTEGRIS Hospice</b>	7
9101	<b>Arts Council of Oklahoma City</b>	5	7908	<b>Intervention &amp; Crisis Advocacy Network (ICAN)</b>	7
9102	<b>Ballet Oklahoma</b>	5	7018	<b>Last Frontier Council Boy Scouts of America</b>	7
9103	<b>Canterbury Voices</b>	5	7019	<b>Legal Aid Services of Oklahoma</b>	7
9122	<b>deadCenter Film</b>	5	7309	<b>Logan Community Services</b>	7
9104	<b>Lyric Theatre of Oklahoma</b>	5	7306	<b>Logan County Council of Aging</b>	7
9120	<b>Mabee-Gerrer Museum of Art</b>	5	7072	<b>Mental Health Association of Oklahoma</b>	7
9123	<b>National Cowboy &amp; Western Heritage Museum</b>	5	7030	<b>Metropolitan Better Living Center</b>	7
9121	<b>Norman Firehouse Art Center</b>	5	7905	<b>Mobile Meals of El Reno</b>	7
9115	<b>Oklahoma Children's Theatre</b>	5	7021	<b>Moore Youth &amp; Family Services</b>	7
9105	<b>Oklahoma City Museum of Art</b>	5	7022	<b>Neighborhood Services Organization (NSO)</b>	7
9110	<b>Oklahoma Contemporary Arts Center</b>	5	7073	<b>NewView Oklahoma</b>	7
9106	<b>Oklahoma Philharmonic Society</b>	5	7010	<b>NorthCare</b>	7
9116	<b>Oklahoma Shakespeare in the Park</b>	5	7025	<b>Oklahoma Foundation for the Disabled</b>	8
9117	<b>Oklahoma Visual Arts Coalition</b>	5	7027	<b>Oklahoma Medical Research Foundation (OMRF)</b>	8
9111	<b>Oklahoma Youth Orchestras</b>	5	7049	<b>Pivot</b>	8
9107	<b>Science Museum Oklahoma</b>	5	7032	<b>Positive Tomorrows</b>	8
9125	<b>The Sooner Theatre</b>	5	7058	<b>Possibilities</b>	8
			7074	<b>ReMerge</b>	8
7000	<b>United Way of Central Oklahoma</b>	6	7031	<b>Retired Senior Volunteer Program (RSVP)</b>	8
7009	<b>A Chance to Change</b>	6	7907	<b>Russell-Murray Hospice</b>	8
7004	<b>Areawide Aging Agency</b>	6	7033	<b>The Salvation Army of Central Oklahoma</b>	8
7055	<b>Bethesda</b>	6	7321	<b>The Saville Center</b>	8
7007	<b>Big Brothers Big Sisters of Oklahoma</b>	6	7071	<b>Skyline Urban Ministry</b>	8
7902	<b>Boys &amp; Girls Club of Darlington</b>	6	7036	<b>Special Care</b>	8
7028	<b>Boys &amp; Girls Clubs of Oklahoma County</b>	6	7037	<b>Sunbeam Family Services</b>	8
7050	<b>Calm Waters Center for Children and Families</b>	6	7903	<b>The C.A.R.T. House</b>	8
7914	<b>Canadian County 4-H Foundation</b>	6	7039	<b>Upward Transitions</b>	8
7913	<b>Canadian County CASA</b>	6	7042	<b>Urban League of Greater Oklahoma City</b>	8
7076	<b>The CARE Center</b>	6	7043	<b>Variety Care</b>	8
7903	<b>The C.A.R.T. House</b>	6	7045	<b>YMCA of Greater Oklahoma City</b>	8
7051	<b>CASA of Oklahoma County</b>	6	7046	<b>YWCA Oklahoma City</b>	8
7006	<b>Catholic Charities of the Archdiocese of Oklahoma City</b>	6	7911	<b>Youth &amp; Family Services, Inc.</b>	8
7319	<b>Central Oklahoma Camp &amp; Conference Center</b>	6			
7067	<b>Circle of Care</b>	6	7100	<b>United Way of Norman</b>	9
7034	<b>Citizens Caring for Children</b>	6	7166	<b>ABLE Community Based Services</b>	9
7075	<b>City Care</b>	6	7126	<b>Aging Services</b>	9
7052	<b>Community Literacy Centers</b>	6	7103	<b>Bethesda</b>	9
7917	<b>Compassionate Hands</b>	6	7104	<b>Big Brothers Big Sisters of Oklahoma</b>	9
7013	<b>Daily Living Centers</b>	6	7107	<b>CASP</b>	9
7024	<b>Dale Rogers Training Center, Inc.</b>	6	7148	<b>Catholic Charities of the Archdiocese of Oklahoma City</b>	9
7054	<b>D-DENT</b>	6	7113	<b>Center for Children and Families</b>	9
7014	<b>EARC</b>	7	7134	<b>Full Circle Adult Day Center</b>	9
7901	<b>El Reno Blessing Baskets</b>	7	7135	<b>Girl Scouts Western Oklahoma</b>	9
7029	<b>Girl Scouts Western Oklahoma</b>	7	7109	<b>Legal Aid Services of Oklahoma</b>	9
7317	<b>God's Food Bank</b>	7	7133	<b>Mary Abbott Children's House</b>	9
7015	<b>Goodwill Industries of Central Oklahoma</b>	7	7114	<b>Meals on Wheels of Norman</b>	9
7070	<b>Health Alliance for the Uninsured</b>	7	7121	<b>South Central CASA of Oklahoma</b>	9
7012	<b>HeartLine</b>	7	7138	<b>Thunderbird Clubhouse</b>	9
7066	<b>Homeless Alliance</b>	7	7118	<b>Transition House</b>	9

# OF CHARITIES

7111	<b>The Virtue Center</b>	9	8041	<b>Oklahoma Institute for Child Advocacy (OICA)</b>	13
7120	<b>Women's Resource Center</b>	9	8042	<b>Oklahoma Project Woman</b>	13
7200	<b>United Way of Pottawatomie County</b>	9	8025	<b>Ronald McDonald House Charities of Oklahoma City</b>	13
7213	<b>Big Brothers Big Sisters of Oklahoma</b>	9	0407	<b>Samaritan's Purse</b>	13
7235	<b>Central Oklahoma Community Action Agency</b>	9	8032	<b>Sharing Tree</b>	13
7225	<b>Girl Scouts Western Oklahoma</b>	10	8040	<b>Southern Plains Tribal Health Board Foundation</b>	13
7240	<b>HeartLine</b>	10	8043	<b>Special Olympics Oklahoma</b>	13
7224	<b>Last Frontier Council Boy Scouts of America</b>	10	8026	<b>St. Jude Children's Research Hospital</b>	13
7214	<b>Legal Aid Services of Oklahoma</b>	10	8047	<b>The Toby Keith Foundation</b>	13
7230	<b>Pottawatomie County 4-H</b>	10	8067	<b>Water4</b>	13
7205	<b>Project Safe, Inc.</b>	10	8054	<b>Wind &amp; Fire Motorcycle MC, Heartland Heat</b>	13
7209	<b>YMCA</b>	10			
			0500	<b>America's Charities</b>	14
9220	<b>Regional Food Bank of Oklahoma</b>	11	0512	<b>Amnesty International USA</b>	14
9222	<b>BritVil Community Food Pantry</b>	11	0515	<b>Breast Cancer Coalition Fund</b>	14
9201	<b>City Rescue Mission</b>	11	0516	<b>Brightfocus Foundation</b>	14
9064	<b>Infant Crisis Services</b>	11	0518	<b>CureSearch for Cancer Research</b>	14
9203	<b>Jesus House</b>	11	0519	<b>Diabetes Research &amp; Wellness Foundation</b>	14
9227	<b>OKC Metro Alliance</b>	11	0503	<b>Feed the Children</b>	14
			0527	<b>Mothers Against Drunk Driving</b>	14
8050	<b>Creating Healthier Communities</b>	11	0528	<b>Multiple Sclerosis Association of Oklahoma</b>	14
8027	<b>Ability Connection Oklahoma</b>	11	0531	<b>Ovarian Cancer Research Alliance</b>	14
8004	<b>Ally's House</b>	11	0533	<b>Southern Poverty Law Center</b>	14
8001	<b>Alzheimer's Association Oklahoma</b>	11	0538	<b>The Human Society of the United States</b>	14
8002	<b>American Cancer Society</b>	11	0510	<b>Wounded Warrior Project</b>	14
8003	<b>American Diabetes Association</b>	11			
8064	<b>American Liver Foundation</b>	11	0300	<b>Global Impact</b>	14
8037	<b>American Lung Association</b>	11	0313	<b>Alight</b>	14
8044	<b>Arthritis Foundation</b>	11	0305	<b>American Jewish World Service</b>	14
8058	<b>Autism Speaks</b>	11	0307	<b>AMREF Health Africa</b>	14
8031	<b>Bethany Children's Health Center</b>	11	0306	<b>ChildFund International USA</b>	14
8056	<b>Breast Cancer Research Foundation</b>	11	0311	<b>Feed My Starving Children</b>	15
8059	<b>Cavett Kids Foundation</b>	12	0309	<b>Heifer Project International</b>	15
8024	<b>Children's Health Foundation</b>	12	0316	<b>Helen Keller International</b>	15
8006	<b>Crohn's &amp; Colitis Foundation Northern Texas/Oklahoma</b>	12	0310	<b>MAP International</b>	15
8005	<b>Cystic Fibrosis Foundation</b>	12	0338	<b>The Salvation Army World Service Office</b>	15
8070	<b>Doctors without Borders</b>	12	0326	<b>Save the Children</b>	15
8007	<b>Epilepsy Foundation Oklahoma</b>	12	0312	<b>SEE International</b>	15
8066	<b>The Foundation for AIDS Research (amfAR)</b>	12	0329	<b>UNICEF USA</b>	15
8036	<b>Harold Hamm Diabetes Center</b>	12			
8061	<b>Hearts for Hearing Foundation</b>	12			
8063	<b>Hope is Alive</b>	12			
8071	<b>Hough Ear Institute</b>	12			
8022	<b>Huntington's Disease Society of America</b>	12			
8019	<b>JDRF International</b>	12			
8008	<b>Leukemia &amp; Lymphoma Society</b>	12			
8055	<b>Leukemia Research Foundation</b>	12			
8026	<b>LifeShare Foundation</b>	12			
8020	<b>Limbs for Life Foundation</b>	12			
8051	<b>Make-A-Wish Oklahoma</b>	12			
8010	<b>March of Dimes</b>	12			
8023	<b>NAMI Oklahoma</b>	12			
8013	<b>National Multiple Sclerosis Society</b>	12			
8068	<b>Navigators</b>	13			



FOR BUILDING A STRONGER COMMUNITY  
THROUGH YOUR GIFT TO THE SCC!



FOR MORE SCC INFORMATION, VISIT:  
[OKLAHOMA.GOV/OMES/SERVICES/EMPLOYEE-BENEFITS/  
STATE-EMPLOYEE-CHARITABLE-CAMPAIGN](http://OKLAHOMA.GOV/OMES/SERVICES/EMPLOYEE-BENEFITS/STATE-EMPLOYEE-CHARITABLE-CAMPAIGN)

FOR MORE INFORMATION, CONTACT THE SCC DIRECTOR:  
1444 NW 28TH STREET  
OKLAHOMA CITY, OK 73106  
PHONE: 405.236.8441  
EMAIL: [SCC@UNITEDWAYOKC.ORG](mailto:SCC@UNITEDWAYOKC.ORG)  
[UNITEDWAYOKC.ORG/STATE-CHARITABLE-CAMPAIGN](http://UNITEDWAYOKC.ORG/STATE-CHARITABLE-CAMPAIGN)

PAYMENTS ONLY:  
P.O. BOX 248919  
OKLAHOMA CITY, OK 73124-8919