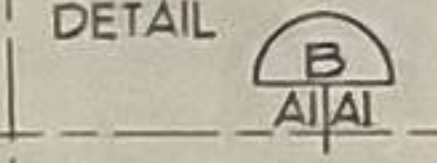


PANEL MOUNTING LOCATION
 1/8" = 1'-0"
 ELEV

GENERAL NOTES:

1. AHU-1 SUSPENDED FROM STRUCTURE ABOVE. BOTTOM OF UNIT WILL BE 8 FEET ABOVE FINISHED FLOOR. METAL BUILDING MANUFACTURER SHALL DESIGN BUILDING STRUCTURE TO SUPPORT LOAD OF AHU-1. AHU-1 WEIGHTS APPROXIMATELY 385 POUNDS.
2. AHU-2 SUPPORTED BY CEILING JOISTS ABOVE ROOM 103. AHU-2 WEIGHTS APPROXIMATELY 126 POUNDS.
3. REFER SHEET M3 FOR EXHAUST FAN AND LOUVER SCHEDULES.
4. REFER SHEET A6 FOR DOOR AND WINDOW ELEVATIONS.

ELECTRICAL PANEL BOARD MOUNTING LOCATION REFER SHEET E2, E3 AND DETAIL



ALTERNATE #3

ALTERNATE #4

ALTERNATE NO. 2

ALTERNATE NO. 1

NOTE: ALL WORK ON THIS SHEET



ALIOMA STATE INDUSTRIES GRANITE, OKLA.
 MANUFACTURING FACILITY

ENGINEERING AND RESEARCH
LABORATORY
OF MECHANICAL ENGINEERS
FOR TESTING AND MATERIALS

Ordinary Hazard Occupancy, 26-1.5.2
Hazardous Occupancy, 4-1.9
Dry, FI - Moderate

Area Limitations--
Building Square Footage = 24,500 SF.
Building Equipped with An Approved Sprinkler System
BOCA 93
506.3; 100%
506.3; 700% with approved sprinkler system
506.2; 150% with 100% open area

$450\% = 4.5$
 100%
 $4.5 \times 9600 = 43,200$ sf
 $\frac{24,500}{4.5} = 5444.4$ sf tabular area

FIRE PROTECTION:

Construction--
BOCA 93 Type 2C, Noncombustible, Unprotected

Fire Resistant Requirements--
BOCA, Table 602
Exterior Nonbearing Walls: 0 hours, Table 705.2
Structural Frame: 0 hours
Walls and Permanent Partitions: 0 hour
Roof: 0 hours

Interior Finishes--
BOCA 93 722.2. Exposed Insulation; Flame Spread of 25, Smoke development rating of 450 or less.
Office Areas: Class A, Class B, or Class C, refer NFPA 101, 26-3.2.2.
Interior floor finish: Class I or Class II, refer NFPA 101, 26-3.3.3. Exception: NFPA 101, 6-5.7.2 allows a downgrade from Class II for complete coverage by an automatic sprinkler system.

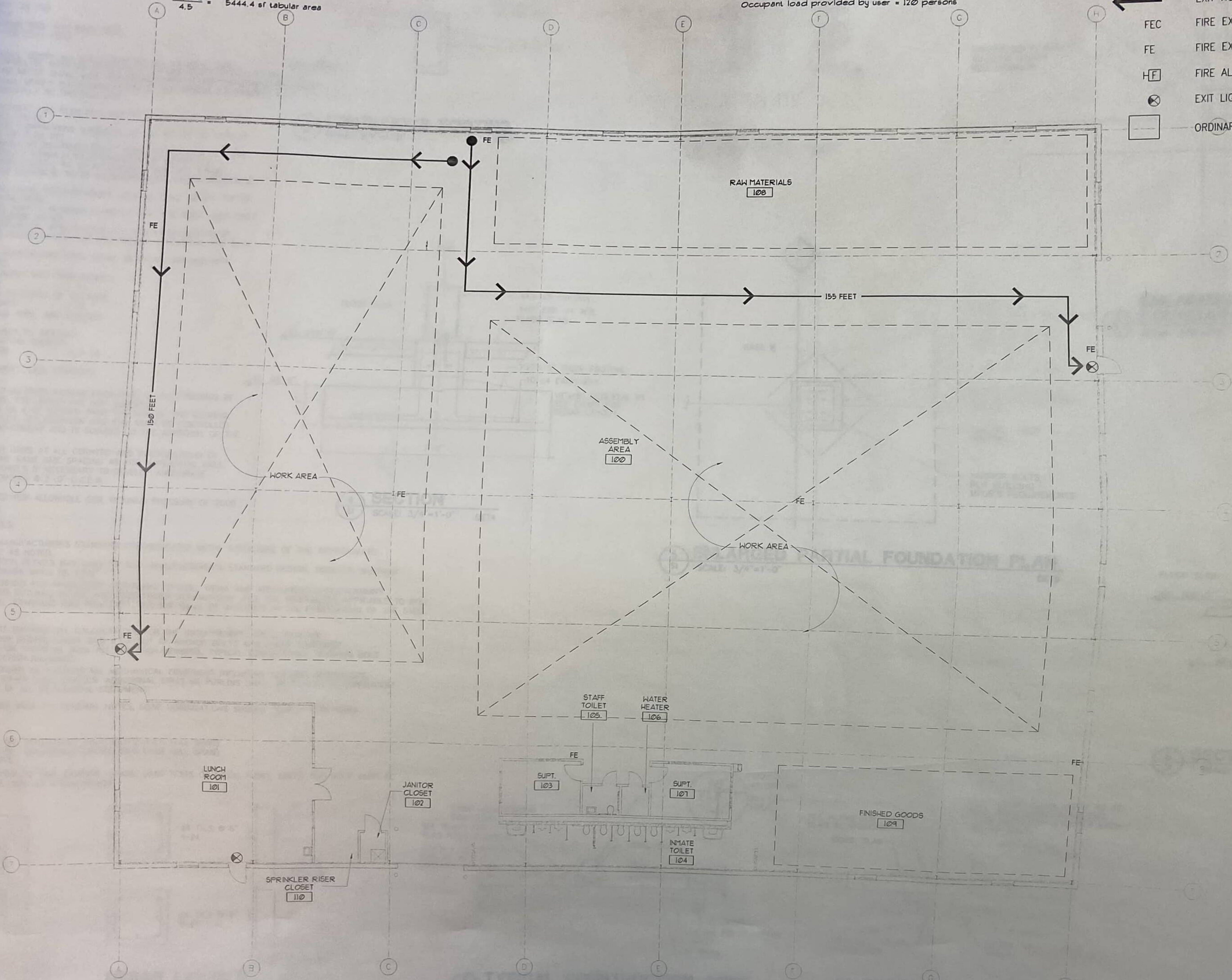
Egress Capacity--
BOCA 93, Sec 1009.2, Table 1009.2:
Capacity for level exit component: 0.15 inch with approved sprinkler system
Minimum exit door width: 36" - 34 inches clear width
34 inches divided by 0.15 = 245 persons
Occupant load provided by user = 120 persons

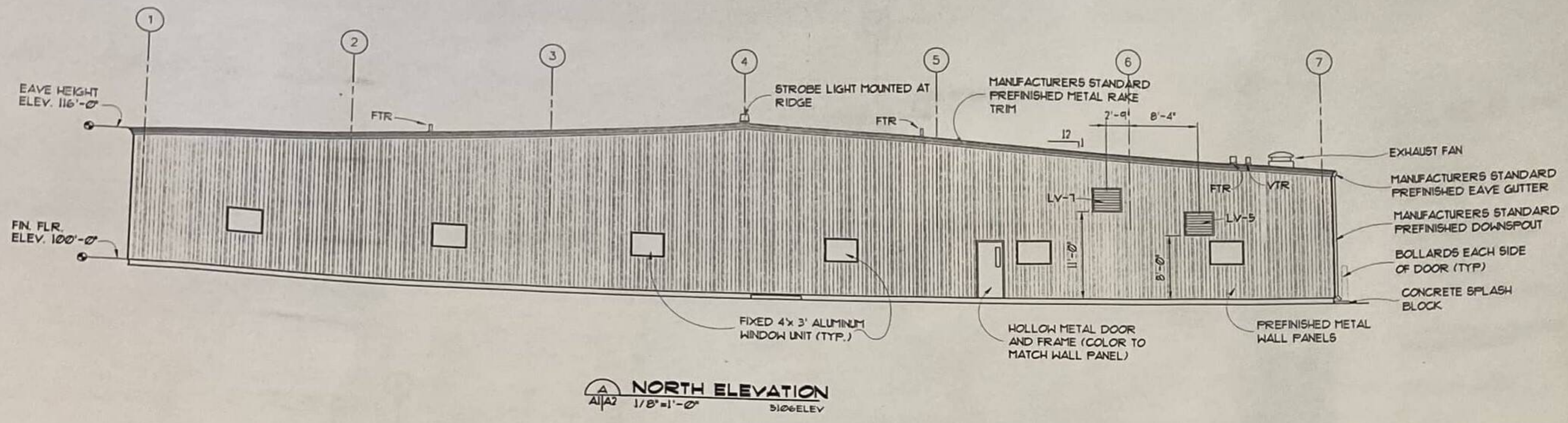
Number of Exits Required--
Minimum number of exits: Sec. 1010.0, Table 1010.2; 500 persons or less, 2 required.
Occupant load was provided by user. Number of exits provided exceed actual number necessary.

Travel Distance--
Boca 93, Sec 1006.5, Table 1006.5: 250 feet - with sprinkler system

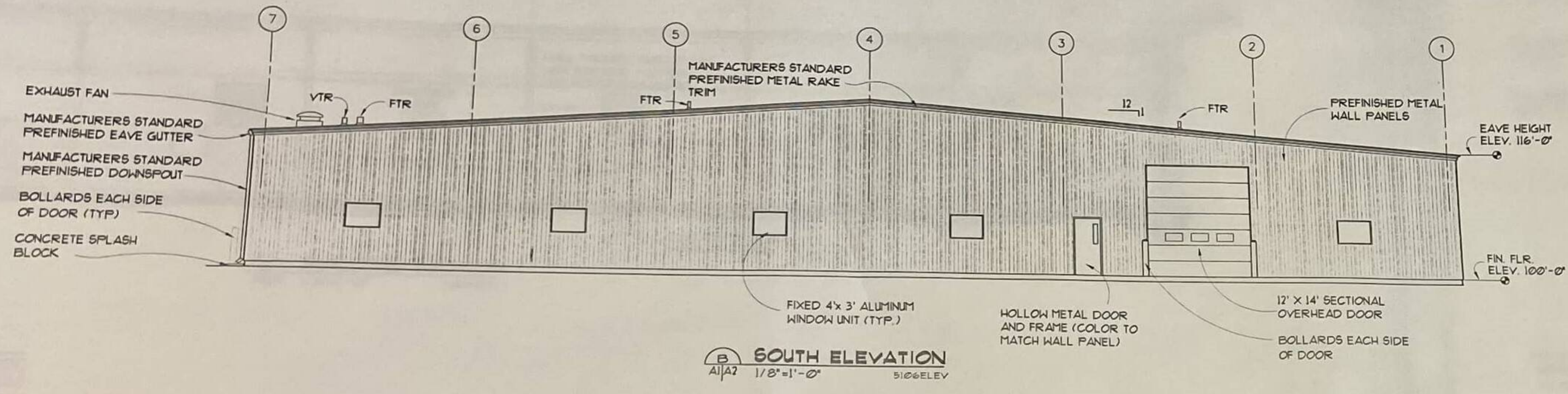
LEGEND

- ← EXIT ROUTE
- FEC FIRE EXTINGUISHER CABINET
- FE FIRE EXTINGUISHER BOTTLE
- HF FIRE ALARM PULL STATION
- ⊗ EXIT LIGHT
- ORDINARY HAZARD GROUP 1 OCCUPANCY

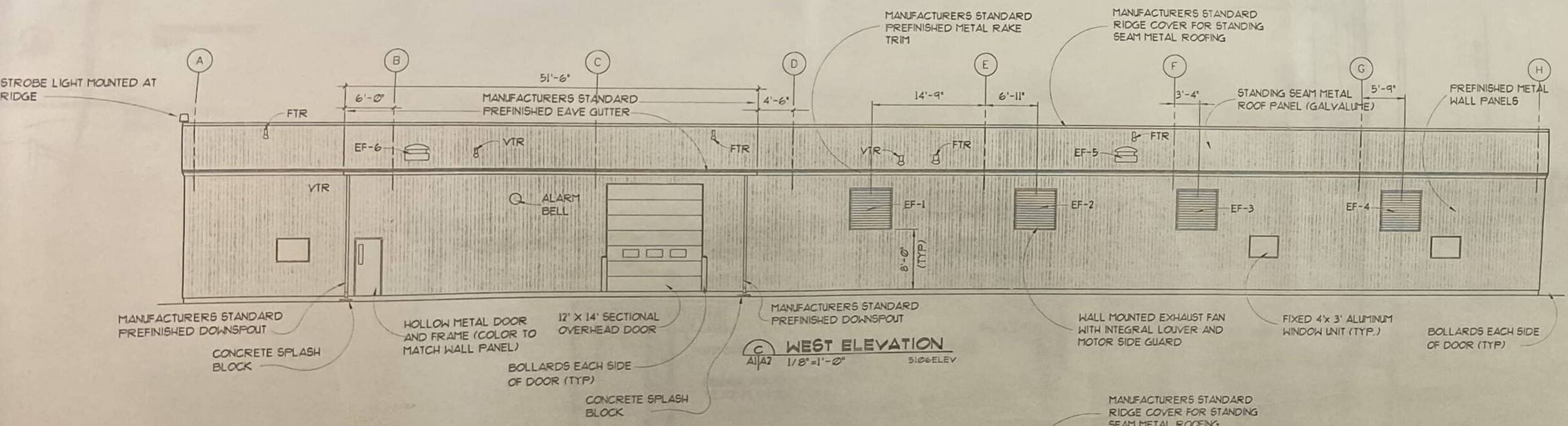




A NORTH ELEVATION
 1/8"=1'-0"
 5106ELEV

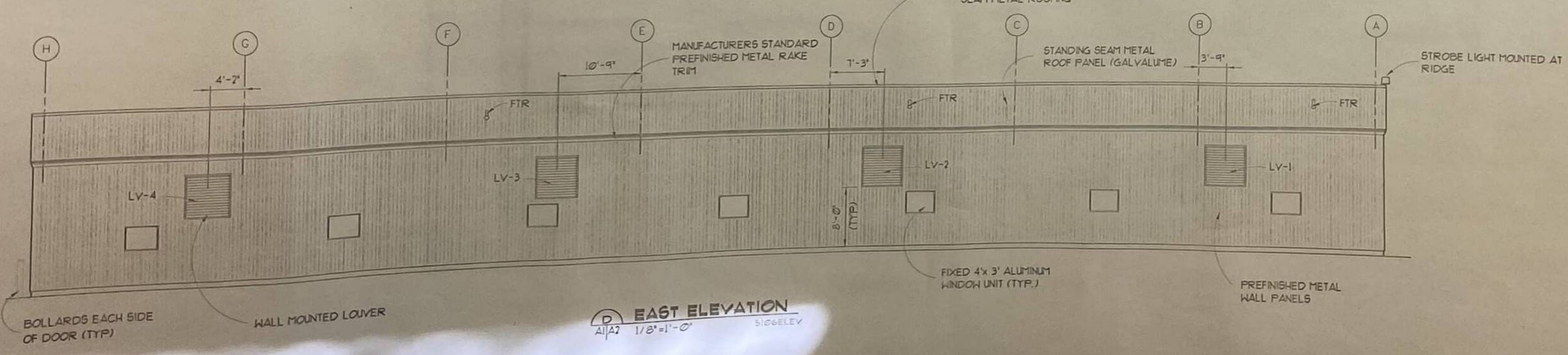


B SOUTH ELEVATION
 1/8"=1'-0"
 5106ELEV

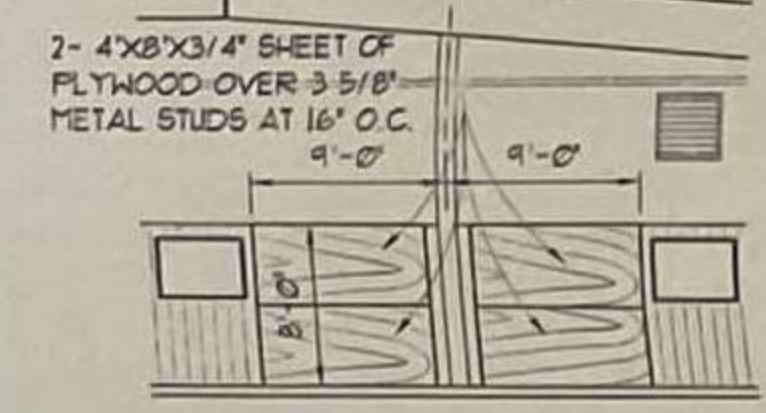


C WEST ELEVATION
 1/8"=1'-0"
 5106ELEV

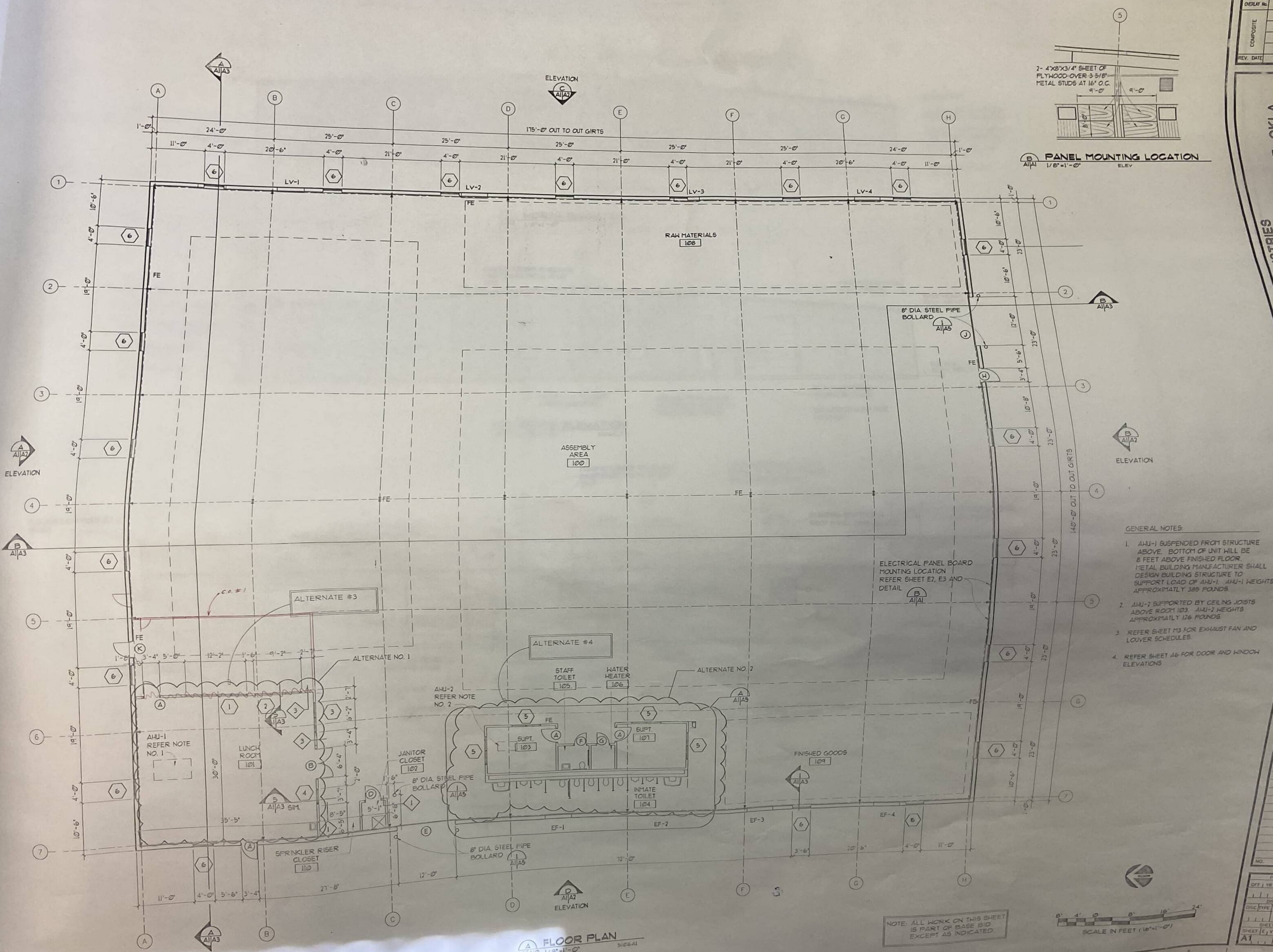
- GENERAL NOTES:**
1. REFER SHEET M3 FOR EXHAUST FAN, LOUVER SCHEDULES
 2. BEFORE CUTTING OPENINGS FOR WALL LOUVERS VERIFY ALL SIZES WITH MECHANICAL CONTRACTOR.



D EAST ELEVATION
 1/8"=1'-0"
 5106ELEV

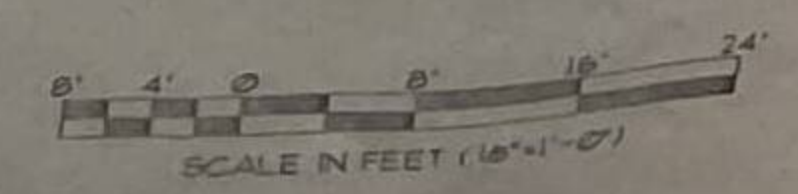


PANEL MOUNTING LOCATION
 1/8" = 1'-0" ELEV.



- GENERAL NOTES:**
- AHU-1 SUSPENDED FROM STRUCTURE ABOVE. BOTTOM OF UNIT WILL BE 8 FEET ABOVE FINISHED FLOOR. METAL BUILDING MANUFACTURER SHALL DESIGN BUILDING STRUCTURE TO SUPPORT LOAD OF AHU-1. AHU-1 HEIGHTS APPROXIMATELY 385 POUNDS.
 - AHU-2 SUPPORTED BY CEILING JOISTS ABOVE ROOM 103. AHU-2 HEIGHTS APPROXIMATELY 126 POUNDS.
 - REFER SHEET M3 FOR EXHAUST FAN AND LOUVER SCHEDULES.
 - REFER SHEET A6 FOR DOOR AND WINDOW ELEVATIONS.

NOTE: ALL WORK ON THIS SHEET IS PART OF BASE BID EXCEPT AS INDICATED.



FLOOR PLAN
 1/8" = 1'-0" 5166A1

| | |
|-------------|-----|
| PROJECT | NO. |
| SHEET | NO. |
| DATE | NO. |
| DESCRIPTION | NO. |
| DISC TYPE | NO. |
| EXP. | NO. |
| SHEET NO. | NO. |
| SHEET C.V. | NO. |
| REVISION | NO. |
| A1 | NO. |