

# O-EPIC Premium Assistance

## Fast Facts

October 2006



Business, insurance, state government and you

Working Together to

*Insure Oklahoma!*

The Oklahoma Employer/Employee Partnership for Insurance Coverage (O-EPIC) is a program to assist small business owners, employees and their spouses with health insurance premiums. Find out more information by visiting [www.insureoklahoma.org](http://www.insureoklahoma.org).

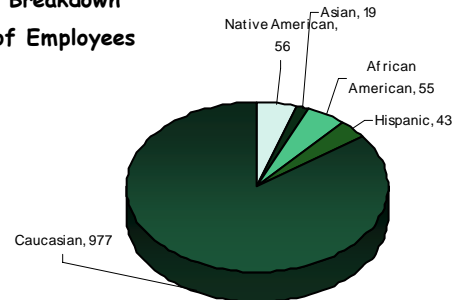
### Employer Sponsored Insurance (ESI)

	Total Currently Enrolled			New Enrollment this Month		
	Male	Female	Total	Male	Female	Total
Employee	440	514	954	37	43	80
Spouse	55	141	196	13	6	19
<b>Total</b>	<b>495</b>	<b>655</b>	<b>1,150</b>	<b>50</b>	<b>49</b>	<b>99</b>

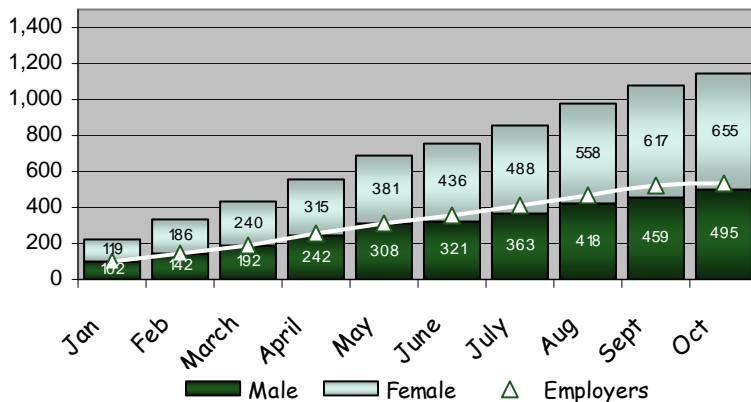
Business Activity	Current	New	Closed	Renewed
	594	32	1	2

\*Some approved businesses may not have any approved employees.

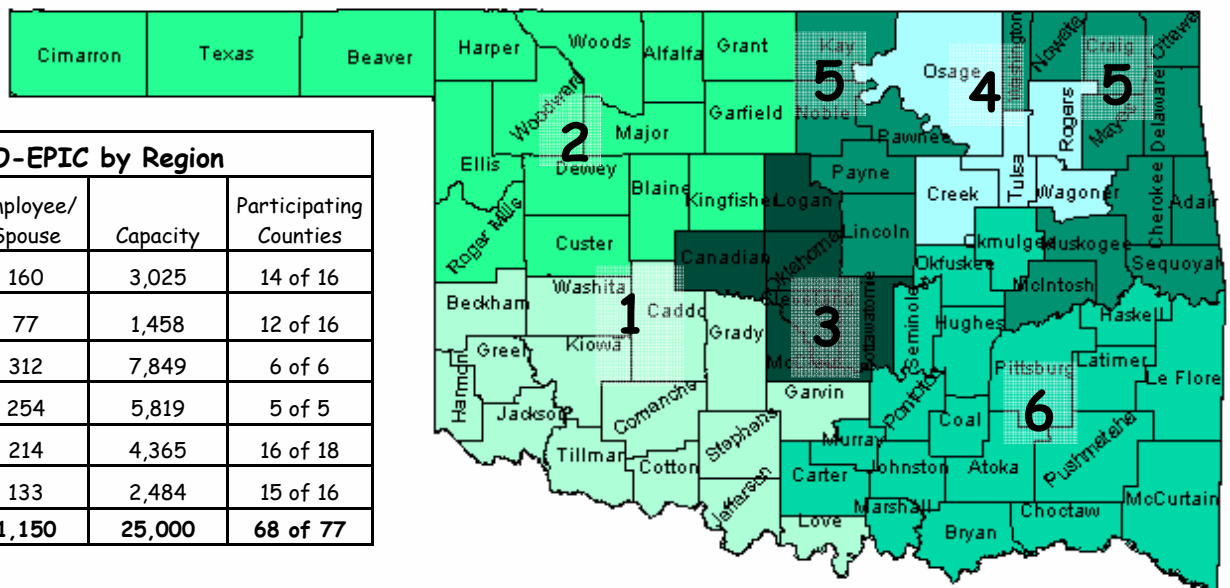
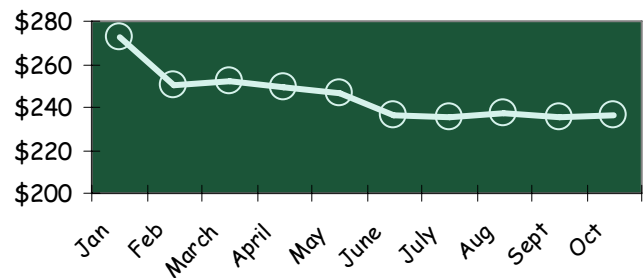
October 2006 Race Breakdown of Employees



2006 Employee and Employer Monthly Trends



Average Premium Per Employee & Spouse Per Month



O-EPIC by Region			
Region	Employers	Employee/Spouse	Capacity
Region 1	70	160	3,025
Region 2	38	77	1,458
Region 3	193	312	7,849
Region 4	137	254	5,819
Region 5	90	214	4,365
Region 6	66	133	2,484
<b>Total</b>	<b>594</b>	<b>1,150</b>	<b>25,000</b>

Data is valid as of the date of the report any subsequent figures for this group for this time period may vary. [www.insureoklahoma.org](http://www.insureoklahoma.org)