



Final Report:

Implementing a DRG Payment System for
Oklahoma Medicaid
Acute Hospital Inpatient Care

February 24, 2006



APS Healthcare
February 24, 2006

Table of Contents

Executive Summary	3
I. Introduction	5
II. Method	6
III. Hospital Discharge Data Collection and Adjustment	7
IV. DRG Weight Computation	9
V. Hospital Base-Rate Computation.....	10
VI. Payment System Implementation	12
VII. Conclusion and Recommendations	14
VIII. Appendixes.....	15

Table of Appendixes

Appendix 1 - DRG Payment Implementation for Oklahoma Medicaid	15
Appendix 2 – Claim Fields and Criteria for Data Extraction	17
Appendix 3 – Hospital Cost-to-Charge Ratios	19
Appendix 4 – Procedure and Diagnosis Code Updates	32
Appendix 5 – Neonate Enhancement Logic	33
Appendix 6 – OHCA DRG Weights for Calendar Years 2002-2004.....	34
Appendix 7 – Base Rate Peer Groups.....	46
Appendix 8 – Absolute Base Rate Calculation.....	60

Executive Summary

Background

This report documents the implementation of a DRG payment system as designed and analyzed in prior studies presented to the Oklahoma Health Care Authority (OHCA) by APS Healthcare in December, 2003 and September, 2004. Those studies established the feasibility and expected impact of a change in hospital payment policy for both managed care and fee for service segments of the Oklahoma Medicaid client population.

The DRG payment system was originally launched by the Centers for Medicare and Medicaid Services in the early 1980's. The system creates a method of predetermined fixed reimbursement for hospital care provided to inpatients. The payment consists of an amount to cover base hospital operating expense (Base Rate) multiplied by the case severity of the patient (DRG weight).

Data Summary

Fee for service (FFS) claims and managed care encounter records for the most recent (as of June, 2005) three calendar years (2002–2004) were extracted from the OHCA MMIS to use in the DRG rate-setting. Only acute inpatient hospital claims and encounters were used, and encounter records were adjusted for undercount (as described in a previous report). The CMS Healthcare Cost Report Information System (HCRIS current through March 31, 2005) was used to compute cost-to-charge ratios and to measure the hospital characteristics used to classify hospitals into one of five cost-related peer groups. The hospital-specific cost-to-charge ratios were applied to charges (billed amounts) on claims to compute costs, which were then adjusted for inflation over the three year period.

DRG Payment Calculation

In order to calculate the hospital payments under the DRG payment system – a global budget of \$416 Million was used. This represents the projected total payments for the hospitals in the first year of DRG payments (October 2005 through September 2006).

DRG base rates were computed as the average cost per discharge for each hospital peer group, and DRG weights were calculated as the average cost per discharge for each patient diagnosis related group relative to the over-all average cost per discharge. A DRG with a weight of 2.0 is twice as resource intensive as the average discharge, while a DRG with a weight of 0.5 is one half as resource intensive as the average discharge. Each discharge was assigned to a DRG with the CMS Version 22 DRG Grouper, modified to include perinatal codes, which are prevalent in the Medicaid population. The DRG payment was then computed for each discharge as the product of the hospital peer-group base rate times the DRG weight. Discharges with exceptionally high costs receive an additional “outlier” payment to compensate.

DRG Payment Implementation

Prior to implementing the DRG payment system, OHCA sent notices to hospital administrators to verify their cost-to-charge ratio and peer-group assignment information. This review process led to revision of the inclusion criteria for fields from cost reports, and updated information for hospitals without cost reports or more current data since their last cost report was filed.

The DRG payment system for acute care hospitals went live on October 1, 2005. Payments were automatically adjusted following system upgrades that were implemented in November when the hospital CCR and peer-group data validation process was completed. Following initial implementation, the payment tables with information about hospital CCR, peer-group, and DRG weights will be updated annually.

I. Introduction

The purpose of this report is to document the data, methods, assumptions, and decisions that support the implementation of a diagnosis-related group (DRG) payment system for acute-care hospital discharges paid for by Oklahoma Medicaid.

Health-risk adjusted payment systems are being adopted by public and private payers across the country because they take advantage of electronic information technology to compensate hospitals for what is generally believed to be a more objective, accurate, and fair measure of surgical, medical, and nursing work effort, compared to traditional payment rates based on “customary and prevailing” charges or per diem payments based on historical costs. Additionally, DRG payments are made on a per discharge basis which encourages hospitals to operate more efficiently.

The Oklahoma Health Care Authority (OHCA) commissioned APS and EDS to implement a DRG payment system for Oklahoma Medicaid. The report is presented in seven parts:

- I. Introduction
- II. Method
- III. Discharge Data Collection and Adjustment
- IV. DRG Weight Computation
- V. Hospital Base-Rate Computation
- VI. Payment System Implementation
- VII. Conclusion and Recommendations

A concise overview of the tasks undertaken to implement the payment system is presented in Appendix 1. Additional details and supporting data are attached in the other Appendices:

1. DRG payment implementation for Oklahoma Medicaid
2. Claim fields and extract criteria
3. Cost-to-charge ratios
4. Updated grouper codes
5. Neonatal grouper codes
6. Oklahoma Medicaid DRG weights
7. Base-rate peer-groups
8. Absolute base rate calculation

II. Method

The DRG payment methodology is based on published guidelines that follow the system currently used by the federal Centers for Medicare and Medicaid Services (CMS) to compensate hospitals for services to Medicare patients.¹

The basic formula for a DRG-related payment per discharge can be written as:

$$\text{Payment} = (\text{Hospital Base Rate}) \times (\text{DRG Relative Value Weight})$$

Implementing this payment formula requires the computation of both a hospital base-rate and a DRG relative value weight. It is important to note that **both** of these factors must be known in order to compute an expected average payment: *expected payments cannot be deduced from hospital base rates alone.*

The hospital base rate measures facility-related costs net of patient case-mix. These facility-related costs vary in proportion to combinations of facility characteristics, like size, location, teaching requirements, and critical access or sole provider designation. Total payments, however, do not necessarily vary in proportion to these base-rate facility cost factors, because the second factor in the payment formula – DRG weight – or case-mix, also varies greatly between different hospital types.

It is paradoxical that some hospitals have relatively low base rates, but relatively high payments. This is true whenever a facility benefits from a favorable operating or administrative cost structure (for example, economies of scale), but also receives a high proportion of patients with very complex conditions requiring high-cost procedures and patient care services. Therefore, it is not valid to conclude that a relatively low base rate will translate into a relatively low total or average payment.

The next section describes the hospital discharge data that were used to estimate the initial DRG payment formula for Oklahoma Medicaid.

¹ See Hospitals and Rate Setting Systems: A Reference Manual for Developing and Implementing Rate Structures (The HFMA Healthcare Financial Management Series), Cromwell, Jerry, et al, 1997.

III. Hospital Discharge Data Collection and Adjustment

Three years of acute care, inpatient hospital claims and encounters with discharge dates of 1/1/2002 through 12/31/2004 (CY 2002, 2003, 2004) were extracted from the OHCA data warehouse and utilized for this analysis. The records included both fee-for-service claims and managed-care encounters. Indian Health Service and Children's Hospital claims were excluded from the extract. Also, clients classified as "medically needy" and their corresponding hospital claims were not included in the dataset. Appendix 2 provides a detailed listing of claim fields and criteria used for the data extraction.

Fee-for-Service Claim Data

Claim codes were validated as meeting uniform billing specifications (no local codes specific to Oklahoma Medicaid were found). Claims were tested for uniqueness per discharge. It was found that there were cases where multiple claims existed for a single hospital discharge, which was verified by OHCA. These claims represent instances where hospitals submitted "interim bills" for an inpatient stay. A unique identifier was created for these multi-claim discharges, and all related claims were assigned the same identifier. All value fields from the multiple claims were aggregated for the unique claim.

Financial fields were tested for accuracy. Payments from the claim-header paid amount were adjusted for third-party coverage and co-payments. These adjusted actual payments were then compared to expected payments calculated on the basis of service location-specific *per diem* rates provided by OHCA. Detail service location *per diem* payment rates for each hospital were multiplied by claim detail allowed unit amounts (i.e. the length of stay for the discharge, measured in days) to calculate expected payment per discharge. A high correlation between adjusted actual payments and expected payments based on *per diem* rates and length of stay indicated that the claim header field contained reliable payment information. Overall, the total of actual payments and total calculated payments to all hospitals were also deemed reasonably accurate by OHCA.

Managed-Care Encounter Data

APS reviewed the managed-care encounter records included in the dataset to be used for setting DRG hospital base rates and relative payment weights.² It was found that encounters tended to be under-counted and unevenly reported, so the number of encounters was estimated as 57% of the number of FFS claims. Encounter records were weighted so that the sum of weights equals 57% of the number of FFS claims. The effect of this correction is to smooth out the trend in MC encounters and total discharges throughout the baseline period. These re-weighted encounter records were then combined with FFS claims and the combined total was used to estimate the total

² For details, see OHCA document "Final Report: A DRG Payment System for Oklahoma Medicaid Acute Hospital Inpatient Care" September 15, 2004

discharge volume, the percentage distribution of discharges over DRGs and providers, and changes in the distribution over time.

Converting Charges to Costs

Having established that hospital claims contain reasonably high-quality information on payment and lengths of stay per discharge, an adjustment was made to convert hospital charges (i.e. “billed amounts”) into hospital costs. Charges were multiplied by a cost-to-charge ratio (CCR) to more closely approximate the actual cost of providing services to Medicaid clients. Further computation of hospital base-rates and relative DRG weights are based on hospital costs, rather than charges or paid amounts.

CCR data were extracted from CMS’ Healthcare Cost Report Information System (HCRIS). HCRIS is a public-use file that contains a complete history of cost reports (CMS Form 2552-96). The first step is to link the OHCA provider identification number with the six-digit CMS Provider ID on the cost-report. It was difficult to make an accurate and complete linkage because no universal identifier will be available until CMS fully implements the “National Provider Identifier” in 2007. To detect and correct ID-number matching errors, OHCA chose to send a letter to each hospital administrator to verify their assigned CMS ID number.

CCRs were computed by this method:

- 1) Select data from worksheet B-1 column 27 (total cost) and worksheet C-1, columns 6 (inpatient charges) and 7 (outpatient charges).
- 2) Compute the CCR for each cost report according to the formula:
 - a. Numerator (cost) = B-1, Col. 27, Line 95 minus sum of Lines 63 through 94, including subscripts.
 - b. Denominator (charges) = (C-1, Col. 6, Line 101) plus (C-1, Col. 7, Line 101) minus (the sum of Col. 6 Lines 63 through 100, including subscripts), minus (the sum of Col. 7 Lines 63 through 100, including subscripts).
 - c. Ratio (CCR) = Numerator / Denominator .
- 3) Compute the average CCR for each CMS ID over all their cost reports in the most recent three years.
- 4) Join the CCRs to OHCA providers using the CMS ID cross-walk, which results in three kinds of matches:
 - a. OHCA providers with one CCR get the computed CCR.
 - b. OHCA providers with more than one CCR get the average of all the CCRs for matching CMS ID numbers.
 - c. OHCA providers with no CCR get the overall average of all similar providers (i.e. the default CCR) – Critical Access Hospitals (CAH) get the average of all CAH, and non-CAH get the average of all non-CAH hospitals.

A list of hospitals showing OHCA ID number, CMS Provider ID and final computed average CCR is attached as Appendix 3.

IV. DRG Weight Computation

Relative value weights for DRG categories were computed using hospital discharge data described in Part III above. This section describes the DRG weight computation procedures that were followed.

Data Preparation for DRG Grouper

Input files were created for the CMS Medicare Version 22 grouper. Lines containing detail ICD-9 procedure codes were transposed and attached to the claim header record to produce a single claim record per line. Historical diagnosis and procedure codes that are no longer valid and not recognized by the CMS Medicare Version 22 Grouper were updated to their replacement codes. Appendix 4 shows the invalid codes and their associated replacement codes.

Because the CMS Medicare grouper logic is based on the Medicare population, which has little or no perinatal experience, claims that were grouped into Major Diagnostic Category 15 “Newborns and Other Neonates with Conditions Originating in the Perinatal Period” were further grouped using the logic for neonates that is employed by the Wisconsin Medicaid program. This neonatal modification of the CMS Medicare grouping logic is shown in Appendix 5.

After processing claims with the grouper, the percent of ungrouped claims was 0.18% (about 150 claims). The reason codes for the ungrouped claims were investigated and verified. Most of these ungrouped claims were due to invalid diagnosis codes.

DRG Weight Calculation

DRG relative value weights were calculated in accordance with Medicare’s Inpatient Prospective Payment System. Claim charges were converted to cost using cost-to-charge ratios described in Part III above. The medical inflation rate was accounted for by inflating costs forward to the final quarter of the projected payment year using the Inpatient Hospital Prospective Reimbursement Index produced by Global Insight.

Average cost per discharge was computed for all claims, and the average cost per discharge within each DRG was also calculated. Claims with costs and costs per day that were outside of three standard deviations from the geometric mean (i.e. exponential mean of the log distribution) within each DRG were excluded from the weight calculation. This is consistent with the CMS methodology. The final DRG weight is thus the average cost per discharge for each DRG category, excluding extreme outliers. The Oklahoma Medicaid specific DRG weights are provided in Appendix 6.

V. Hospital Base-Rate Computation

The DRG hospital payment system covers a total of 571 hospitals. This large number of hospitals may be reduced to a smaller number of hospital classes, or “peer groups” in order to simplify the DRG payment formula.

Using hospital base-rate peer groups in the payment formula is a compromise between the complexity of using a unique hospital-specific rate for every single provider, and the over-simplification of using one single rate for all hospitals. To find an optimal balance between simplicity and complexity, multivariate statistical methods are used to construct exhaustive and mutually exclusive categories that minimize cost variance within categories, and maximize cost variance between categories.

This section explains the method used to classify hospitals into base-rate peer groups, and to compute a relative base-rate common to all hospitals within each peer group. Hospitals and their peer group assignments are shown in Appendix 7.

Classification Variables

Actual costs vary from one discharge to another for several different reasons: patients may have different burdens of illness or severity, lengths of stay may vary, and hospitals may have different capital structures, different costs related to graduate medical student training, and different operating costs related to wages determined by labor markets across different geographic localities. Public concern with access to care, and equitable reimbursement, justify additional consideration for special situations, such as critical access and sole community hospitals.

Multiple regression analysis was used to partition discharge cost variance into distinct parts due to the various contributing factors. The SPSS software regression procedure was applied to regress actual costs for each discharge on patient diagnostic case mix (DRG) and length of stay, and five hospital classification variables (taken from the most recent CMS Form 2552-96 cost reports available in the HCRIS Hospital Data Set):

- a. Teaching Hospital (Worksheet S2: for non-CAH, Line 25: for CAH, Line 30.04)
- b. Urban or Rural Hospital (for cost reports with FY ending before March 2004, Worksheet S2, Column 1, Line 21: for cost reports with FY ending after Feb 2004, Worksheet S2, Column 1, Line 21.03)
- c. Sole Community Hospital (Worksheet S2, Line 26, Column 1)
- d. Critical Access Hospital (Worksheet S2, Line 30)
- e. Large Hospital (Worksheet S3-1, Column 1, Line 1 > 200 beds)

Because these variables depend on accurate linkage between OHCA hospital ID numbers and CMS ID numbers, accurate cost reports, and accurate software, OHCA decided to verify the assigned classification variables with a letter to hospital administrators.

Hospital Classification

There are 32 possible combinations of the five classification variables, so every hospital is one of the 32 hospital types. The regression equation was used to compute a predicted value (the adjusted average cost) for each of the 32 hospital types (holding case-mix and length of stay constant). The hospital types were then sorted in ascending order of predicted average costs, and divided into five intervals of approximately equal width. Hospitals within an interval form a cost-related “peer group” because they have approximately the same level of expected costs given their combination of characteristics, and costs vary significantly from one interval to another.

Peer-Group Base Rates

Base rates for the DRG payment formula were calculated from the predicted average costs for each of the five hospital peer groups. The base cost for all types of hospital in a peer group is measured as the average cost for each type of hospital in the group, weighted by the number of discharges for each type of hospital in the group. These weighted averages for the five hospital peer groups are then divided by the over-all weighted average cost to compute the relative peer-group base-rate for the five hospital cost classes. The relative rate is thus the ratio of group cost to overall average cost.

Absolute Base Rate

To convert the relative base rate for each group into an absolute dollar-denominated rate, the relative rate must be multiplied by the average projected payment per discharge, which is equal to the projected total hospital payment budget, divided by the total projected volume of discharges. However, since DRG case-mix also varies from one peer-group to another, the final base rate determination must account for case-mix variation. This was done in three steps.

The first step was to project the volume and case-mix of hospital discharges for the payment year (October 2005 through September 2006) and pro-rate the projected total hospital payment budget to projected discharges. This gives a budget-neutral average payment amount per discharge.

The second step multiplies this average by the relative peer-group base rates. This gives a first approximation to absolute base rates. These approximate peer group base rates, DRG weights, and outlier adjustments were used to compute a payment for each discharge. These computed payments were summed over all discharges.

The third step compares the sum of computed payments to the total projected budget. The base rates were adjusted by the ratio of total projected budget to the sum of computed payments. This ensures that the sum of computed payments is equal to the projected total hospital payment budget. Appendix 8 shows the conversion of relative hospital peer group base costs to absolute hospital peer group base payment rates.

VI. Payment System Implementation

The billing and payment system is designed and maintained by EDS. The transition to DRG payment rates from *per diem* payments occurred on October 1, 2005.

Payment Tables

The payment system uses three tables that are updated each year according to the procedures described in Parts III, IV, and V above:

1. Hospital CCR and Peer Group Assignment Table
2. Peer Group Base Rate Table
3. DRG Weight Table

To ensure the accuracy of hospital CCR and peer-group assignments, OHCA decided to send this hospital-specific information to each hospital administrator for review, prior to payment system implementation. Several inaccuracies were identified through this review process, including:

- Critical Access hospitals are not required to submit cost data on Worksheet C-1, so Worksheet B1 was used instead of C-1.
- The cost-to-charge ratio formula omitted some cost centers that OHCA had intended to include, so the computer routines were revised to include these cost centers.
- Cost report format for rural/urban designation changed in March 2004, so computer routines were revised to retrieve data from the correct location on cost reports submitted after February 2004.
- Some hospitals had more current information than was available on their most recent cost report recorded in HCRIS, so OHCA worked with the providers to correct the data on a case-by-case basis.

The payment tables were updated with the verified and corrected information in November, and claims submitted prior to the update were automatically re-priced with the new tables.

Pricing Formula

This DRG pricing formula is used to compute the payment for a hospital discharge:

$$\text{Reimbursement} = (\text{DRG Weight}) \times (\text{Provider Peer Group Base Rate}) + (\text{Outlier Amount}) - (\text{Applicable co-payments or TPL})$$

Co-payments are based on length of stay (\$3 per day). The adjustment for high-cost outliers is applied if the provider cost exceeds a threshold of \$50,000 and the DRG

Weight X Base Rate is less than provider cost. The outlier amount is 70% of provider cost in excess of \$50,000. Outlier amount is computed with this formula:

$$\begin{aligned} \text{Outlier Amount} = & \text{(claim total amount billed) X (billing provider's CCR)} \\ & - \text{(DRG Weight X Peer Group Base Rate)} \\ & - \text{(threshold of \$50,000) X (marginal cost factor 70\%),} \\ & \text{or zero, whichever is greater.} \end{aligned}$$

The DRG pricing formula does not include amounts payable for Disproportionate Share or Graduate Medical Education – these are handled separately. The DRG payment system also does not cover discharges from psychiatric, rehabilitation, residential treatment centers, or Indian clinic hospitals – these continue to be paid at *per diem* rates.

VII. Conclusion and Recommendations

Implementation of the DRG payment system went fairly smoothly, largely due to extensive advanced preparation. Feasibility and impact studies helped to foster a wide-ranging stakeholder discussion, which ultimately resulted in broad-based support for the authorizing legislation.

Technical difficulties were resolved fairly rapidly with cooperative working relationships that had already been established between the providers (represented by Oklahoma Hospital Association), OHCA, and its consultants and contractors. These difficulties were encountered during the case-by-case validation of hospital-specific data. Several errors in computer software programming, as well as inaccurate or outdated data in some cases were detected and corrected within six weeks of the planned implementation date.

We conclude with the following recommendations for further action:

- 1) Update the payment tables of hospital CCR, peer group, base rates and DRG weights on an annual basis.
- 2) Initiate the hospital administrator CCR and peer group data validation cycle earlier in the process to allow for any corrections to be made prior to final payment table delivery.
- 3) Continue to work with providers to resolve remaining concerns or recommendations for modifications to the payment method.
- 4) If payment method modifications are agreed upon, revise payment computation software and Medicaid State Plan Amendment accordingly.

VIII. Appendixes

Appendix 1 - DRG Payment Implementation for Oklahoma Medicaid

Purpose: APS will support EDS implementation of DRG payment system in Oklahoma by producing the base-rate and DRG-weight tables necessary to compute a DRG payment for acute-care general medical and surgical hospital inpatient discharges.

Project 1: Re-calibrate the absolute base-rate using existing relative weights and new total budget. Supply the existing peer-group cross-walk, DRG weight table, and recalibrated absolute base rates to EDS prior to July 1 for testing purposes.

Project 2: Reconstruct the peer-group cross-walk and relative base rates using a new year of data (CY2004). Reconstruct the DRG weights with a new year of data and a more current grouper (CMS Grouper Version 22). Supply the reconstructed peer-group crosswalk, reconstructed DRG weights, and recalibrated absolute base rates to EDS prior to Oct 1 implementation.

Project 1 Step Number	Step Description
1	Obtain from OHCA the approved annual acute hospital inpatient payment budget.
2	Calculate hospital specific payments for the base year and test for budget neutrality.
3	Adjust base rates so payments are budget neutral and report re-calibrated base rates to OHCA & EDS.
Project 2 Step Number	Step Description
1	Extract all header and detail claims data for the analysis. Limit the extraction to acute care hospitals. Also exclude specified Children's Hospitals and Indian Health Service hospitals, free-standing rehab & free-standing psych. Limit the FFS claims to a status of different from denied.
2	Reconcile existing database of claims and adjusted encounter records with new claims data for CY 2004. Make reasonable & necessary adjustments to smooth data discontinuities associated with the termination of managed care encounter reporting.
3	Search claims data sets for interim billed claims. Create a temporary link between header and detail claim data sets for interim billed claims. Create a single claim with a unique ICN for interim billed claims.
4	Review historical claims to update procedure and diagnosis codes that are invalid for current grouper software. Apply neonatal grouper enhancement to grouper software. Use enhanced grouper software to assign DRGs to discharges from claims and encounters for the previous three calendar years (1/1/02-12/31/04).

5	Obtain current HCRIS cost report database files from CMS. Implement SAS database management system to access and retrieve relevant information from cost reports.
6	Calculate hospital-specific inpatient cost-to-charge ratio using the OHCA formula and data from cost reports in HCRIS. Convert claim charges to cost using the cost-to-charge ratio.
7	Develop or acquire from OHCA a quarterly index for inflating historical claims. Inflate claim cost forward to most recent quarter in claim set so that analysis is based on real cost, adjusted for inflation.
8	Calculate DRG weights by dividing the average (arithmetic mean) cost for each DRG by the average cost for all DRGs. Exclude outliers per Medicare methodology.
9	Retrieve the five hospital-specific variables used to classify hospitals into base-rate peer groups from HCRIS. (*Per OHCA's request, the in-state/out-of-state variable will be omitted.)
10	Recalculate the relative hospital peer-group base rates using the updated data sets for discharge costs and hospital grouping variables.
11	Re-classify hospitals according to new base rate formula and produce provider-to-peer group cross-walk table with default assignment for unmatched provider IDs.
12	Obtain from OHCA the approved annual acute hospital inpatient payment budget.
13	Calculate hospital specific payments for the base year and test for budget neutrality.
14	Adjust base rates so payments are budget neutral and report the re-calibrated base rates, provider/peer-group crosswalk table, and reconstructed DRG weights, to OHCA & EDS.

Appendix 2 – Claim Fields and Criteria for Data Extraction

Header Data Elements

- ICN
- Adjusted ICN
- Claim Status Code
- Claim Type Code
- Facility Provider ID
- Client ID
- Date of Birth
- Sex Code
- Admit Source
- Admit Type
- Patient Status Code
- Admission Date
- First Date of Service
- Last Date of Service
- Provider County Code
- Indian Provider Indicator
- Provider Name
- Admit Diagnosis Code
- Diagnosis Code 1
- Diagnosis Code 2
- Diagnosis Code 3
- Diagnosis Code 4
- Diagnosis Code 5
- Diagnosis Code 6
- Diagnosis Code 7
- Diagnosis Code 8
- Specialty
- Header Billed Amount
- Header (Warrant) Amount
- Header Patient Liability Amount
- Header State Share Amount
- Header Total Reimbursement Amount
- Header TPL Amount
- Header Encounter Amount
- Covered Days
- Non Covered Days
- Total Days

Detail Data Elements

- ICN
- Adjusted ICN
- LOC Pricing
- Revenue Code
- Detail From Date of Service
- Detail Last Date of Service
- Detail Amount Billed
- Detail Amount Allowed
- Detail Co-Pay
- Detail TPL
- Detail Quantity Units Allowed
- Detail Quantity Units Billed
- Days Covered

ICD-9 Surgical Procedure Code Elements

- ICN
- Adjusted ICN
- Surgical Procedure Code
- Surgical Procedure Code Date

Extraction Conditions

- Claim Type Code = “I”
- Last Date of Service Between 7/1/2000 and 6/30/2003
- Final Issue Warrant Date Between 7/1/2000 and 6/30/2004
- Indian Provider Indicator = “X”
- Claim Status Code Different from “D”
- Excluded Hospitals = JD McCarty, George Nigh, The Childrens’ Center
- Excluded “Medically Necessity Clients”

Appendix 3 – Hospital Cost-to-Charge Ratios

OHCA ID	Name	City	State	CCR
200051060A	ATHENS LIMESTONE HOSPITAL	ATHENS	AL	0.3657
100698200A	HUNTSVILLE HOSP	HUNTSVILLE	AL	0.2827
100699110A	LITTLE RIVER MEM HSP	ASHDOWN	AR	0.4812
100698710C	NORTHWEST MEDICAL CENTER OF BENTON	BENTONVILLE	AR	0.4156
100699090A	JOHN ED CHAMBERS MEMORIAL HOSPITAL	DANVILLE	AR	0.5326
100699000A	DEQUEEN REGIONAL MEDICAL	DEQUEEN	AR	0.4263
100698930A	WASHINGTON REGIONAL MEDICA	FAYETTEVILLE	AR	0.3707
100726400C	HEALTHSOUTH OF FORT SMITH	FORT SMITH	AR	0.3220
100698690A	ST EDWARDS MERCY MED CTR	FORT SMITH	AR	0.3536
100698680A	SPARKS REG MED CTR	FORT SMITH	AR	0.3595
200012010B	VISTA HEALTH OF FT SMITH	FT SMITH	AR	0.4926
100698810A	GRAVETTE MED CTR HOSP	GRAVETTE	AR	0.4822
100697990A	MEDICAL PARK HOSPITAL	HOPE	AR	0.3088
100817680A	ARKANSAS CHILD HOSP	LITTLE ROCK	AR	0.5427
100698670A	ST VINCENT INFIRMARY	LITTLE ROCK	AR	0.3283
100699100B	UNIVERSITY OF ARK HOSP	LITTLE ROCK	AR	0.3884
100698950A	MENA MEDICAL CENTER	MENA	AR	0.5124
100698940A	MERCY HOSPITAL TURNER MEMO	OZARK	AR	0.6053
100698840A	NORTH LOGAN MEM HOSP	PARIS	AR	0.6542
100698730A	ST MARY-ROGERS M H	ROGERS	AR	0.4390
100699060A	SILOAM SPRINGS MEMORIAL HOSPITAL	SILOAM SPRINGS	AR	0.5029
100698710A	NORTHWEST HEALTH SYSTEM	SPRINGDALE	AR	0.3729
100696600A	SUMMIT MEDICAL CENTER	VAN BUREN	AR	0.2213
100698850A	MERCY HOSP SCOTT CO	WALDRON	AR	0.5411
100704860A	FLAGSTAFF MEDICAL CTR	FLAGSTAFF	AZ	0.4428
100705070A	BANNER THUNDERBIRD MEDICAL CENTER	GLENDALE	AZ	0.2644
100706210A	KINGMAN REGIONAL MEDICAL CENTER	KINGMAN	AZ	0.4658
100689570A	BANNER DESERT MEDICAL CENTER	MESA	AZ	0.2994
100691660A	BANNER BAYWOOD MEDICAL CENTER	MESA	AZ	0.2340
100846760A	BANNER MESA MEDICAL CENTER	MESA	AZ	0.2340
200029160A	PAGE HOSPITAL	PAGE	AZ	0.4263
200043550A	PAYSON REG MEDICAL CTR	PAYSON	AZ	0.2859
100705060A	MARICOPA MEDICAL CENTER	PHOENIX	AZ	0.3651
100704990A	PHOENIX CHILDRENS HOSP	PHOENIX	AZ	0.5476
200060120A	BANNER ESTRELLA MEDICAL CENTER	PHOENIX	AZ	0.7535
100690420A	BANNER GOOD SAMARITAN MEDICAL CENTER	PHOENIX	AZ	0.3084
100696930A	ORLANDO REGIONAL HEALTHCARE	PHOENIX	AZ	0.2799
100704980A	NAVAPACHE HOSPITAL	SHOWLOW	AZ	0.4338
200055290A	DEL E WEBB MEMORIAL HOSPITAL	SUN CITY	AZ	0.2517
200006040A	WICKENBURG REGIONAL HEALTH CENTER	WICKENBURG	AZ	0.6216
100704600A	PRESBYTERIAN KASEMAN HOSPI	YOUNGTOWN	AZ	0.3213
200022870A	PALO VERDE HOSPITAL	BLYTHE	CA	0.3145
200015230A	ENLOE MEDICAL CENTER	CHICO	CA	0.2513
100706550A	LOMA LINDA UNIVERSITY MEDICAL CENTER	LOMA LINDA	CA	0.2899

OHCA ID	Name	City	State	CCR
200035940A	OAK VALLEY HOSPITAL DISTRICT	OAKDALE	CA	0.3726
100706470A	UCI MEDICAL CENTER	ORANGE	CA	0.2376
100706420A	CHILDRENS HOSP & HLTH CTR	SAN DIEGO	CA	0.3736
100704510D	MEDICAL CENTER OF AURORA	AURORA	CO	0.2626
100704570A	MEMORIAL HOSPITAL	COLORADO SPRING	CO	0.3383
100704240A	DELTA COUNTY MEM HOSPITAL	DELTA	CO	0.5715
100704480B	UNIVERSITY OF COLORADO HOSPITAL	DENVER	CO	0.3726
100704090A	THE CHILDREN'S HOSPITAL ASSOCIATION	DENVER	CO	0.4456
100704510G	ROSE MEDICAL CENTER	DENVER	CO	0.2541
100704510C	PRESBYTERIAN /ST LUKE'S	DENVER	CO	0.3022
100704510B	SWEDISH MEDICAL CENTER	ENGLEWOOD	CO	0.2695
100704280A	VALLEY VIEW HOSPITAL ASSOCIATION	GLENWOOD SPRGS	CO	0.5905
100704420A	MCKEE MEDICAL CENTER	LOVELAND	CO	0.4498
100704440A	PARKVIEW EPISCOPAL HOSP	PUEBLO	CO	0.3051
100704510H	NORTH SUBURBAN MEDICAL CENTER	THORTON	CO	0.2824
100704370A	MT SAN RAFAEL HOSP	TRINIDAD	CO	0.4263
200039370A	WATERBURY HOSPITAL	WATERBURY	CT	0.4028
200061000A	HOWARD UNIVERSITY HOSPITAL	WASHINGTON	DC	0.4960
200013280A	BARTOW MEMORIAL HOSPITAL	BARTOW	FL	0.3722
100697060B	CORAL SPRINGS MEDICAL CENTER	CORAL SPRINGS	FL	0.2457
200060650A	GULF BREEZE HOSPITAL	GULF BREEZE	FL	0.2816
100696790A	HOLMES REGIONAL MED CTR	MELBOURNE	FL	0.3310
100696860A	FLORIDA HOSPITAL MEDICAL	ORLANDO	FL	0.3038
100697050A	BAY MEDICAL CENTER	PANAMA CITY	FL	0.2979
100697060A	NORTH BROWARD MEDICAL CENTER	POMPANO BEACH	FL	0.2559
200040240A	SARASOTA MEMORIAL HOSPITAL	SARASOTA	FL	0.3157
200048710A	TAMPA GENERAL HOSPITAL	TAMPA	FL	0.2477
100697070A	PARRISH MEDICAL CENTER	TITUSVILLE	FL	0.3911
200044050A	REDMOND REGIONAL MEDICAL CENTER	ROME	GA	0.2501
200034290A	EAST GEORGIA REG MED CTR	STATESBORO	GA	0.2351
200048210A	KAPIOLANI MEDICAL CTR AT PALI MOMI	AIEA	HI	0.3367
100706870A	HILO MEDICAL CENTER	HILO	HI	0.5080
200031760A	STRAUB CLINIC AND HOSPITAL	HONOLULU	HI	0.4271
100706860A	KAPIOLANI MEDICAL CENTER	HONOLULU	HI	0.3699
200025690A	NORTH HAWAII COMMUNITY HOSPITAL	KAWUELA	HI	0.5043
200053110A	WAHIAWA GENERAL HOSPITAL	WAHIAWA	HI	0.5565
100706880A	MAUI MEMORIAL HOSPITAL	WAILUKU	HI	0.4053
200052340A	ST ANTHONY REGIONAL HOSPITAL	CARROLL	IA	0.5542
100692900A	JENNIE EDMUNDSON HSP	CO BLUFFS	IA	0.5043
100692940A	IOWA METHODIST MED CTR	DES MOINES	IA	0.4050
100846730A	TRINITY REGIONAL MEDICAL CENTER	FORT DODGE	IA	0.4325
100693080A	UNIVERSITY OF IOWA	IOWA CITY	IA	0.5063
100696710A	MERCY MEDICAL CENTER-SIOUX CITY	SIOUX CITY	IA	0.3525
100693030A	COVENANT MEDICAL CENTER	WATERLOO	IA	0.3739
100693160A	MADISON COUNTY MEMORIAL HOSPITAL	WINTERSET	IA	0.7332
100703830A	MERCY MEDICAL CENTER	NAMPA	ID	0.5106
100703890A	PORTNEUF MEDICAL CENTER	POCATELLO	ID	0.5813

OHCA ID	Name	City	State	CCR
100691160A	MEMORIAL HOSP S BEND	SOUTH BEND	ID	0.4263
100691770A	MEMORIAL HOSPITAL OF CARBONDALE	CARBONDALE	IL	0.4099
200019840A	RUSH PRESBYTERIAN ST LUKES MEDICAL CTR	CHICAGO	IL	0.3344
200025900A	ST BERNARD HOSPITAL	CHICAGO	IL	0.3949
100691770C	FERRELL HOSPITAL	ELDORADO	IL	0.4599
100691520C	SOUTH SUBURBAN HOSPITAL	HAZEL CREST	IL	0.3314
100691770B	HERRIN HOSPITAL	HERRIN	IL	0.3922
200053360A	CONDELL MEDICAL CENTER	LIBERTYVILLE	IL	0.2739
100691740A	LOYOLA UNIVERSITY MEDICAL CENTER	MAYWOOD	IL	0.4152
100846720A	RED BUD REGIONAL HOSP	RED BUD	IL	0.4256
100691580A	SWEDISH AMERICAN HOSPITAL	ROCKFORD	IL	0.3430
100691810A	MEMORIAL MEDICAL CENTER	SPRINGFIELD	IL	0.3760
200049420A	CGH MEDICAL CENTER	STERLING	IL	0.4672
200016640A	PARKVIEW HOSPITAL INC	FORT WAYNE	IN	0.4527
200033370A	HUNTINGTON MEMORIAL HOSPITAL	HUNTINGTON	IN	0.4382
200052400A	ST ELIZABETH MEDICAL CENTER	LAFAYETTE	IN	0.4173
200054040A	SAINT JOSEPH REGIONAL MEDICAL CENTER MISHAWAKA	MISHAWAKA	IN	0.4667
200051480A	JAY COUNTY HOSPITAL	PORTLAND	IN	0.5319
100691180A	SAINT JOSEPHS REGIONAL MEDICAL CENTER SOUTH BEND	SOUTH BEND	IN	0.4110
200046450A	PERRY COUNTY MEMORIAL HOSPITAL	TELL CITY	IN	0.4263
100691390A	GOOD SAMARITAN HOSPITAL	VINCENNES	IN	0.5117
100694930A	SUMNER COUNTY HOSPITAL	CALDWELL	KS	1.2068
100695380A	NEOSHO MEMORIAL REGIONAL MED CTR	CHANUTE	KS	0.5424
100695360A	COFFEYVILLE REG MED CTR IN	COFFEYVILLE	KS	0.4704
100694790A	SUSAN B ALLEN MEM HOSPITAL	EL DORADO	KS	0.4357
100695030A	MORTON COUNTY HEALTH SYSTE	ELKHART	KS	0.7191
100695270A	NEWMAN MEMORIAL CO HOSP	EMPORIA	KS	0.5972
100694540A	ST CATHERINE HOSPITAL	GARDEN CITY	KS	0.4012
100694940A	HOSPITAL DISTRICT #1	GIRARD	KS	0.7535
100698520A	UNIVERSITY HOSPITAL	JACKSON	KS	0.4277
100695280A	THE UNIVERSITY OF KANSAS H	KANSAS CITY	KS	0.3506
100695290A	LAWRENCE MEM HOSP	LAWRENCE	KS	0.4186
100695070A	MEADE DISTRICT HOSPITAL	MEADE	KS	0.7517
100695310A	WILSON COUNTY HOSPITAL	NEODESHA	KS	0.6804
100694770A	NESS COUNTY DIST #2 HOSP	NESS CITY	KS	0.9945
100694750A	OLATHE MEDICAL CENTER INC	OLATHE	KS	0.3359
100694580A	MT CARMEL MEDICAL CENTER	PITTSBURG	KS	0.8337
100695140A	PRATT REG MEDICAL CTR	PRATT	KS	0.5994
200033230A	RUSSELL REGIONAL HOSPITAL	RUSSELL	KS	0.6807
100695180A	SALINA REGIONAL HEALTH CE	SALINA	KS	0.4214
100695170A	SEDAN CITY HOSPITAL	SEDAN	KS	0.8172
100694630A	ST FRANCIS HOSP MED CTR	TOPEKA	KS	0.5474
200007780A	KANSAS HEART HOSPITAL	WICHITA	KS	0.2999
200002370A	GALICHIA HEART HOSPITAL LLC	WICHITA	KS	0.3474
100695200A	VIA CHRISTI REG MED CTR	WICHITA	KS	0.3000
100698010A	WESLEY MEDICAL CENTER LLC	WICHITA	KS	0.2914
200013820A	KANSAS SURGERY & RECOVERY CENTER	WICHITA	KS	0.5186

OHCA ID	Name	City	State	CCR
100697290A	HARDIN MEM HOSP	ELIZABETHTOWN	KY	0.4682
200049760A	ST LUKE HOSPITAL WEST	FLORENCE	KY	0.3800
200043930A	FRANKFORT HOSPITAL INC	FRANKFORT	KY	0.3294
200022740A	CAVERNA MEMORIAL HOSPITAL	HORSE CAVE	KY	0.4537
100697180A	N K C HOSPITAL	LOUISVILLE	KY	0.3356
200043100A	KOSAIR CHILDREN HOSPITAL	LOUISVILLE	KY	0.3201
100697180B	NORTON HOSPITAL INC	LOUISVILLE	KY	0.4263
200053310A	JACKSON PURCHASE MEDICAL CENTER	MAYFIELD	KY	0.3498
200059590A	OWENSBORO MEDICAL HEALTH SYSTEM	OWENSBORO	KY	0.5265
200036510A	OUR LADY OF THE LAKE REG MED CTR	BATON ROUGE	LA	0.4006
100699190A	RIVERLAND MEDICAL CTR	FERRIDAY	LA	0.4055
100699250A	LEONARD J CHABERT MED CTR	HOUMA	LA	1.4857
200051570A	WOMEN'S AND CHILDREN'S HOSPITAL INC	LAFAYETTE	LA	0.3265
100699140A	CHILDRENS HOSPITAL	NEW ORLEANS	LA	0.3714
100699240A	LSU HEALTH SCIENCE CENTER - SHREVEPORT	SHREVEPORT	LA	0.6191
100699130A	CHRISTUS HLTH NORTHERN LA	SHREVEPORT	LA	0.3074
200054360A	NORTH CADDO MEDICAL CENTER	VIVIAN	LA	0.5591
200027690A	GLENWOOD REGIONAL MEDICAL CENTER	WEST MONROE	LA	0.3490
100688990A	CHILDRENS HOSPITAL	BOSTON	MA	0.3935
200049240A	BAY REGIONAL MEDICAL CENTER	BAY CITY	MI	0.3491
100692320A	HURLEY MEDICAL CENTER	FLINT	MI	0.3790
200015800A	GENESYS REGIONAL MEDICAL CENTER	FLINT	MI	0.4390
100692130A	BRONSON METHODIST HOSP	KALAMAZOO	MI	0.4811
200008270A	ST MARY MERCY HOSPITAL	LIVONIA	MI	0.4186
100692280A	LAKELAND HOSPITAL ST JOSEPH	ST JOSEPH	MI	0.5700
200029490A	ALBERT LEA MEDICAL CENTER	ALBERT LEA	MN	0.7077
200026130A	NORTH COUNTRY HEALTH SERVICES	BEMIDJI	MN	0.5658
100703740A	ST VINCENT HOSP	BILLINGS	MN	0.4569
100691640C	UNITY HOSPITAL	FRIDLEY	MN	0.3648
200049170A	IMMANUEL ST JOSEPHS HOSPITAL	MANKATO	MN	0.5434
200049710A	CHILDRENS HEALTH CARE	MINNEAPOLIS	MN	0.4867
100691640A	ABBOTT NORTHWESTERN HOSPITAL	MINNEAPOLIS	MN	0.3049
100692770A	FAIRVIEW UNIVERSITY MEDICAL	MINNEAPOLIS	MN	0.4372
100692840A	HENNEPIN COUNTY MEDICAL C	MINNEAPOLIS	MN	0.4697
100691640B	OWATONNA HOSPITAL	OWATONNA	MN	0.4445
100692770C	FAIRVIEW NORTHLAND REGIONAL HOSPITAL	PRINCETON	MN	0.4693
200022590A	ST FRANCIS REGIONAL MEDICAL CENTER	SHAKOPEE	MN	0.4312
100692650A	THE ST CLOUD HOSP	ST CLOUD	MN	0.5130
200050740A	HEALTHEAST ST JOSEPH	ST PAUL	MN	0.3383
200044420A	HEALTHEAST WOODWINDS HOSPITAL	WOODBURY	MN	0.4370
100693540B	HARRISON CO COMM HOSP	BETHANY	MO	0.7174
100693790A	SKAGGS COMM HEALTH CTR	BRANSON	MO	0.4034
200038710A	BATES COUNTY MEMORIAL HOSPITAL	BUTLER	MO	0.3332
100693900A	CAMERON REGIONAL MEDICAL CENTER	CAMERON	MO	0.4597
100693320A	JEFFERSON MEM HOSP	FESTUS	MO	0.4427
200054910A	CALLAWAY COMMUNITY HOSPITAL	FULTON	MO	0.4844
100693370A	TEXAS CO MEM HOSP	HOUSTON	MO	0.4651

OHCA ID	Name	City	State	CCR
100693700A	ST JOHNS MED CTR	JOPLIN	MO	0.3668
100693570A	FREEMAN HOSPITAL	JOPLIN	MO	0.3277
100850900A	SAINT JOSEPH HEALTH CENTER	KANSAS CITY	MO	0.3987
100693690A	ST LUKES	KANSAS CITY	MO	0.2833
100693810A	THE CHILDRENS MERCY HOSP	KANSAS CITY	MO	0.5785
200055280A	SSM ST JOSEPH HOSPITAL OF KIRKWOOD	KIRKWOOD	MO	0.3079
100693850A	FITZGIBBON HOSPITAL	MARSHALL	MO	0.4139
200047370A	ST FRANCIS HOSPITAL	MOUNTAIN VIEW	MO	0.6051
100712780F	FREEMAN NEOSHO HOSPITAL	NEOSHO	MO	0.3563
100693590A	PERRY COUNTY MEMORIAL HOSP	PERRYVILLE	MO	0.5583
100693750A	BOTHWELL REG HLTH CTR	SEDALIA	MO	0.5341
100693760A	ST LUKE'S NORTHLAND HOSPIT	SMITHVILLE	MO	0.3126
100693780A	L E COX MED CNTR	SPRINGFIELD	MO	0.4580
100693740A	ST JOHNS REG HLT CTR	SPRINGFIELD	MO	0.4265
100693290A	ST LOUIS CHILDRENS HOSP	ST LOUIS	MO	0.4841
100693350A	CARDINAL GLENNON CHILDREN	ST LOUIS	MO	0.3203
100690180A	BARNES-JEWISH HOSPITAL	ST LOUIS	MO	0.3678
100693940A	OZARKS MED CTR	WEST PLAINS	MO	0.4734
200056950A	BILOXI REGIONAL MEDICAL CENTER	BILOXI	MS	0.2036
200026550A	BOLIVAR MEDICAL CENTER	CLEVELAND	MS	0.3749
100703700A	DEACONESS BILLINGS CLINIC	BILLINGS	MT	0.4716
100703720A	BOZEMAN DEACONESS HOSPITAL	BOZEMAN	MT	0.5782
100703760A	MARCUS DALY MEM HOSP	HAMILTON	MT	0.4643
100850920A	ST PETERS HOSPITAL	HELANA	MT	0.4895
200054270B	ST LUKE COMMUNITY HOSPITAL	RONAN	MT	0.7423
100698030A	TRIDENT MEDICAL CTR	CHARLESTON	NC	0.2597
100696230A	DUKE UNIVERSITY HEALTH SYSTEMS INC	DURHAM	NC	0.4263
100693990A	ST ALEXIUS MED CTR	BISMARCK	ND	0.4369
200041330B	SOUTHWEST HEALTHCARE SERVICES	BOWMAN	ND	1.0479
200053950A	INNOVIS HEALTH	FARGO	ND	0.4705
100694020A	ALTRU HEALTH SYSTEM	GRAND FORKS	ND	0.4231
200050570C	TRINITY HOSPITAL	MINOT	ND	0.4895
100694390A	NEMAHA COUNTY HOSPITAL	AUBURN	NE	0.7884
100694350A	BEATRICE COMM HOSP	BEATRICE	NE	0.5678
100694490A	FREMONT AREA MEDICAL CENTER	FREMONT	NE	0.5366
100694520A	KIMBALL HEALTH SERVICES	KIMBALL	NE	0.7617
100694360A	ST ELIZABETH COMM HLTH CTR	LINCOLN	NE	0.4488
100694280B	BRYAN LGH MEDICAL CENTER EAST	LINCOLN	NE	0.4823
100694290A	NEBRASKA METH HSP	OMAHA	NE	0.4775
100703100A	SAINT JOSEPH HOSPITAL	OMAHA	NE	0.1850
100694300A	IMMANUEL MEDICAL CENTER	OMAHA	NE	0.3653
100705520A	NEBRASKA MEDICAL CENTER	OMAHA	NE	0.3879
200039720A	ALEGENT HEALTH MIDLANDS COMM HOSP	PAPILLION	NE	0.3552
200039380A	PLAINVIEW PUBLIC HOSPITAL	PLAINVIEW	NE	0.7535
100704630A	GERALD CHAMPION MEM HSP	ALAMOGORDO	NM	0.4673
100704600L	PRESBYTERIAN HOSPITAL	ALBUQUERQUE	NM	0.3778
100704770A	UNIVERSITY OF NEW MEXICO	ALBUQUERQUE	NM	0.7535

OHCA ID	Name	City	State	CCR
100704740B	UNION COUNTY GEN HOSP	CLAYTON	NM	0.8426
100704600I	PLAINS REGIONAL MEDICAL CT	CLOVIS	NM	0.4004
200016690A	MIMBRES MEMORIAL HOSPITAL	DEMING	NM	0.3067
100704680A	REHOBOTH MCKINLEY CHRISTIAN HEALTH CARE	GALLUP	NM	0.3947
100704640B	CIBOLA GENERAL HOSP	GRANTS	NM	0.5902
100701720A	EASTERN NEW MEXICO MED CTR	ROSWELL	NM	0.2288
100704660A	HOLY CROSS HOSP	TAOS	NM	0.4967
200000210A	NORTHEASTERN NEVADA REG HOSP	ELKO	NV	0.4637
200007550A	MT GRANT BENERAL HOSPITAL	HAWTHORNE	NV	0.7158
200052600A	SUMMERLIN HOSPITAL MEDICAL CENTER LLC	LAS VEGAS	NV	0.2103
100690010A	VALLEY HOSPITAL MEDICAL CENTER	LAS VEGAS	NV	0.2038
100690000A	DESERT SPRINGS HOSPITAL	LAS VEGAS	NV	0.2181
100705250A	UNIV MED CTR OF S NV	LAS VEGAS	NV	0.3298
200051340A	NORTH VISTA HOSPITAL INC	NORTH LAS VEGAS	NV	0.1884
200023230A	NYE REGIONAL MEDICAL CENTER	TONOPAH	NV	0.6979
100705240A	HUMBOLDT GENERAL HOSPITAL	WINNEMUCCA	NV	0.8850
200055930A	UNITED HEALTH SERVICES HOSPITAL	BINGHAMTON	NY	0.4814
200009710A	MEDINA MEMORIAL HEALTH CARE SYSTEM	MEDINA	NY	0.6323
200039320A	UNIVERSITY OF ROCHESTER STRONG MEM HOSPITAL	ROCHESTER	NY	0.5263
100690940A	BARBERTON CITIZENS HOSPITAL	BARBERTON	OH	0.3092
100690580A	CHILDRENS HOSPITAL MEDICAL CENTER	CINCINNATI	OH	0.6371
200017190A	UNIVERSITY OF KENTUCKY HOSPITAL	CLEVELAND	OH	0.4829
200029600A	DOCTORS HOSPITAL	COLUMBUS	OH	0.4071
100690480A	MIAMI VALLEY HOSP	DAYTON	OH	0.3734
100850880A	HENRY CO HOSPITAL	NAPALEON	OH	0.5562
100728840B	VALLEY VIEW REG HOSP	ADA	OK	0.5129
100699350A	JACKSON CO MEM HSP	ALTUS	OK	0.3958
100699830A	SHARE MEM HSP	ALVA	OK	0.6753
100699780A	PHYSICIANS HOSPITAL IN ANADARKO	ANADARKO	OK	0.9670
100700770A	PUSHMATAHA HSP	ANTLERS	OK	0.5436
100262320C	MERCY MEMORIAL HEALTH CTR	ARDMORE	OK	0.3654
100262850D	ATOKA MEMORIAL HOSPITAL	ATOKA	OK	0.7426
100699490A	JANE PHILLIPS EP HSP	BARTLESVILLE	OK	0.4218
200030240A	CONTINUOUS CARE CTR OF BARTLESVILLE	BARTLESVILLE	OK	0.4263
100700760A	BEAVER CO MEM HSP	BEAVER	OK	1.0716
100700340A	BLACKWELL REG HOSP	BLACKWELL	OK	0.4959
100700740A	CIMARRON MEMORIAL HOSPITAL	BOISE CITY	OK	0.9235
200044170A	BRISTOW MEDICAL CENTER	BRISTOW	OK	0.5986
100700060A	BRISTOW MEM HSP	BRISTOW	OK	0.5986
100699930A	BROKEN ARROW MED CTR	BROKEN ARROW	OK	0.5474
100699660A	HARPER CO COM HSP	BUFFALO	OK	0.7328
100699690A	CARNEGIE TRI-COUNTY MUNICI	CARNEGIE	OK	0.7109
100699820A	ROGER MILLS MEM HSP	CHEYENNE	OK	1.4424
100700820A	GRADY MEM HSP	CHICKASHA	OK	0.5142
100706720B	CLAREMORE REG HOSP	CLAREMORE	OK	0.3501
100726280B	CLAREMORE REGIONAL HOSPIT	CLAREMORE	OK	0.3501
100690900A	CLEVELAND CLINIC HOSPITAL	CLEVELAND	OK	0.2946

OHCA ID	Name	City	State	CCR
100700150A	CLEVELAND AREA HOSP	CLEVELAND	OK	0.8555
100700010A	INTEGRIS CLINTON REGIONAL HSP	CLINTON	OK	0.5081
100699470A	MARY HURLEY HSP	COALGATE	OK	0.7098
100774650D	COAL COUNTY GENERAL HOSPITAL INC	COALGATE	OK	0.7191
100819200B	CORDELL MEMORIAL HOSPITAL	CORDELL	OK	0.8354
200044190A	CUSHING REGIONAL HOSPITAL	CUSHING	OK	0.4294
100700310A	CUSHING REG HOSP	CUSHING	OK	0.4294
200056210A	DRUMRIGHT REGIONAL HOSPITAL	DRUMRIGHT	OK	0.7535
100700120A	DUNCAN REGIONAL HOSP	DUNCAN	OK	0.3440
100696610B	MED CTR OF SE OKLA	DURANT	OK	0.1582
100689950A	RENAISSANCE WOMEN'S CTR OF	EDMOND	OK	0.3420
100697940A	EDMOND MEDICAL CENTER	EDMOND	OK	0.4279
100689650A	EDMOND REG MED CTR	EDMOND	OK	0.6016
100689210A	EDMOND MEM HOSP	EDMOND	OK	0.6016
200023150A	EDMOND SPECIALTY HOSPITAL	EDMOND	OK	0.6016
100700930A	PARK VIEW HOSPITAL	EL RENO	OK	0.3659
100699410A	GREAT PLAINS REG MED CENT	ELK CITY	OK	0.3714
100699500A	INTEGRIS BASS MEM BAP	ENID	OK	0.4675
100690020A	ST MARY'S REGIONAL CTR	ENID	OK	0.2875
100726080B	COMMUNITY HOSP LAKEVIEW	EUFAULA	OK	0.5727
100700710A	FAIRFAX MEMORIAL HOSPITAL	FAIRFAX	OK	1.2765
100700800A	FAIRVIEW HSP	FAIRVIEW	OK	0.7535
100700940A	MEMORIAL HOSPITAL & PHYSICIAN GROUP	FREDERICK	OK	0.4531
100699700A	GROVE GENERAL HOSPITAL	GROVE	OK	0.4413
100700110A	LOGAN HOSPITAL & MED CTR	GUTHRIE	OK	0.5871
100699630A	MEMORIAL HOSPITAL	GUYMON	OK	0.4527
100748330C	HEALDTON MUNICIPAL HOSP	HEALDTON	OK	0.5984
100700220A	HENRYETTA MED CNTR	HENRYETTA	OK	0.6452
200045700C	HENRYETTA MEDICAL CENTER	HENRYETTA	OK	0.6452
100700880A	ELKVIEW GEN HSP	HOBART	OK	0.5131
100699880A	HOLDENVILLE GEN HSP	HOLDENVILLE	OK	0.6881
100700780B	HARMON MEM HSP	HOLLIS	OK	0.5946
200000430A	DESTINY FUTUREQUEST INC	HUGO	OK	1.2771
100700720A	CHOCTAW MEMORIAL HOSPITAL	HUGO	OK	0.4175
100700920A	MCCURTAIN MEM HSP	IDABEL	OK	0.4456
100699510A	KINGFISHER REG HOSP	KINGFISHER	OK	0.6451
100697950B	SOUTHWESTERN MEDICAL CENT	LAWTON	OK	0.3032
100706720C	NOTAMI HOSPITALS OF OKLAHO	LAWTON	OK	0.3032
100700750A	COMANCHE CO MEM HSP	LAWTON	OK	0.3108
100818200B	LINDSAY MUN HOSP	LINDSAY	OK	0.6679
100700440A	INTEGRIS MARSHALL MEM HOSP	MADILL	OK	0.5072
100699750A	MANGUM CITY HOSPITAL	MANGUM	OK	0.6320
100699960A	MERCY HEALTH LOVE COUNTY	MARIETTA	OK	0.9237
100700070A	MCALESTER REGIONAL	MCALESTER	OK	0.4552
100699440A	BAPTIST REGIONAL HEALTH CE	MIAMI	OK	0.4675
100724700B	SPECIALTY HOSPITAL OF MIDWEST CITY	MIDWEST CITY	OK	0.5161
100700490A	MIDWEST CITY REGIONAL HOSP	MIDWEST CITY	OK	0.1941

OHCA ID	Name	City	State	CCR
100700630A	MUSKOGEE REGIONAL MED CTR	MUSKOGEE	OK	0.4282
100700690A	NORMAN REG HSP	NORMAN	OK	0.3603
100700670A	J D MCCARTY C P CTR	NORMAN	OK	1.2065
100700460A	JANE PHILLIPS NOWATA	NOWATA	OK	0.7958
100700250A	OKEENE MUN HSP	OKEENE	OK	0.7535
100699980A	CREEK NATION COM HSP-NI	OKEMAH	OK	0.8820
100699540O	SSM HEALTH CARE OF OKLA	OKLAHOMA CITY	OK	0.4164
100699390A	MERCY HEALTH CENTER	OKLAHOMA CITY	OK	0.3746
100699370A	DEACONESS HSP	OKLAHOMA CITY	OK	0.3999
100699530A	ST MICHAEL HOSP INC	OKLAHOMA CITY	OK	0.5619
100699540A	ST ANTHONY HSP	OKLAHOMA CITY	OK	0.3790
100699540I	ST ANTHONY HOSPITAL	OKLAHOMA CITY	OK	0.4755
100698210A	HEALTHSOUTH REHAB HOSP	OKLAHOMA CITY	OK	0.4755
100677110F	THE CHILDRENS CENTER INC	OKLAHOMA CITY	OK	0.4263
100693560A	SELECT SPECIALTY HSP LA	OKLAHOMA CITY	OK	0.3590
100695720A	KINDRED HOSPITAL EAST LLC	OKLAHOMA CITY	OK	0.3110
100689210U	MEDICAL CENTER HOSPITALS	OKLAHOMA CITY	OK	0.2852
100689130A	UNIVERSITY HOSPITAL AUTHOR	OKLAHOMA CITY	OK	0.2852
100689350A	SELECT SPECIALTY HOSPITAL	OKLAHOMA CITY	OK	0.3831
100706820A	UNIVERSITY HOSP AUTHORITY	OKLAHOMA CITY	OK	0.4263
100806400C	INTEGRIS BAPTIST MEDICAL C	OKLAHOMA CITY	OK	0.2804
200028650A	VALIR REHABILITATION HOSPITAL OF OKC	OKLAHOMA CITY	OK	0.4755
100745350B	LAKESIDE WOMENS CENTER OF	OKLAHOMA CITY	OK	0.4059
200009170A	OKLAHOMA HEART HOSPITAL LLC	OKLAHOMA CITY	OK	0.3847
100700420A	NORTHWEST SURGICAL HOSPITA	OKLAHOMA CITY	OK	0.3520
100700200A	INTEGRIS SOUTHWEST MEDICAL	OKLAHOMA CITY	OK	0.2970
100700530A	SURGICAL HOSPITAL OF OKLAH	OKLAHOMA CITY	OK	0.2811
100700520A	PHYSICIANS HOSPITAL OF OK	OKLAHOMA CITY	OK	0.3935
100693650A	GEORGE NIGH REHAB INST VA	OKMULGEE	OK	0.7116
100700360A	OKMULGEE MEMORIAL HSP	OKMULGEE	OK	0.4263
100699890A	PAULS VALLEY GEN HSP	PAULS VALLEY	OK	0.4326
100690120A	PAWHUSKA HSP INC	PAWHUSKA	OK	0.9639
100260190B	PAWNEE MUNICIPAL HSP	PAWNEE	OK	0.5638
200060390B	PAWNEE MUNICIPAL HOSPITAL	PAWNEE	OK	0.5638
100700900A	PERRY MEM HSP AUTH	PERRY	OK	0.5530
100699420A	VIA CHRISTI	PONCA CITY	OK	0.3694
100700730A	EASTERN OKLAHOMA MEDICAL CENTER	POTEAU	OK	0.4579
100700510F	EASTERN OK MEDICAL CENTER	POTEAU	OK	0.4579
100699770A	PRAGUE MUNICIPAL HSP	PRAGUE	OK	0.8314
100819960B	PRAGUE MUNICIPAL HOSPITAL	PRAGUE	OK	0.8314
100700040A	MAYES COUNTY MEDICAL CENTE	PRYOR	OK	0.4419
100699900A	PURCELL MUN HSP	PURCELL	OK	0.6133
100700190A	SEQUOYAH MEM HSP	SALLISAW	OK	0.4637
100699550A	ST JOHN SAPULPA INC	SAPULPA	OK	0.6466
100700160A	SAYRE MEMORIAL HOSPITAL	SAYRE	OK	0.4222
100700450A	SEILING MUNICIPAL HOSPITAL	SEILING	OK	0.5862
100726260B	SEMINOLE MEDICAL CTR LLC	SEMINOLE	OK	0.3108

OHCA ID	Name	City	State	CCR
100699360A	NEWMAN MEMORIAL HSP	SHATTUCK	OK	0.4606
100740840B	COMMUNITY HEALTH PARTNERS,	SHAWNEE	OK	0.4174
100700850A	HASKELL COUNTY HOSPITAL	STIGLER	OK	0.5503
100699950A	STILLWATER MEDICAL CENTER	STILLWATER	OK	0.4686
100700030A	ADAIR COUNTY HC INC	STILWELL	OK	0.4588
200006460A	STROUD REGIONAL MEDICAL CENTER	STROUD	OK	0.5312
100700080A	STROUD REGIONAL MED	STROUD	OK	0.5312
100700790A	ARBUCKLE MEM HSP	SULPHUR	OK	0.5814
100700680A	TAHLEQUAH CITY HSP	TAHLEQUAH	OK	0.4885
100700840A	JOHNSTON MEMORIAL HOSPITAL	TISHOMINGO	OK	0.7320
200039650A	JOHNSTON MEMORIAL HOSPITAL	TISHOMINGO	OK	0.7320
100699400A	ST JOHN MED CTR	TULSA	OK	0.3852
100699380D	CHILDRENS MED CENTER	TULSA	OK	0.3252
100699380A	HILLCREST MED CNTR	TULSA	OK	0.3252
100699570A	ST FRANCIS HOSPITAL	TULSA	OK	0.4135
100697900A	SOUTHCREST HOSPITAL	TULSA	OK	0.3204
100690390A	MEADOWBROOK SPECIALTY HOSPITAL OF TULSA LLC	TULSA	OK	0.6726
200048610A	TULSA REGIONAL MEDICAL CENTER	TULSA	OK	0.3692
200044210A	HILLCREST MEDICAL CENTER	TULSA	OK	0.3252
200031310A	SAINT FRANCIS HEART HOSPITAL	TULSA	OK	0.3204
100706720A	OSTEOPATHIC HOSPITAL FOUND	TULSA	OK	0.3937
200006260A	TULSA SPINE HOSPITAL	TULSA	OK	0.3414
100748450B	ORTHOPEDIC HOSPITAL OF OKLAHOMA	TULSA	OK	0.5005
100700580A	ORTHOPEDIC HOSPITAL OF OK	TULSA	OK	0.4443
100700560A	TULSA REGIONAL MED CTR	TULSA	OK	0.3937
100700500A	CONTINUOUS CARE CENTERS	TULSA	OK	0.4536
100261400B	CRAIG GENERAL HOSPITAL	VINITA	OK	0.4696
100747940B	WAGONER COMM HOSP	WAGONER	OK	0.5642
100700210A	WATONGA HOSPITAL TRUST AUT	WATONGA	OK	0.8403
100699990A	JEFFERSON CO HSP	WAURIKA	OK	0.8607
100699870E	WEATHERFORD HOSPITAL AUTHORITY	WEATHERFORD	OK	0.4980
100699870A	WEATHERFORD HOSPITAL AUTH	WEATHERFORD	OK	0.5215
100690040A	WETUMKA GENERAL HOSPITAL	WETUMKA	OK	1.2401
100700860A	LATIMER CO GEN HSP	WILBURTON	OK	0.8073
100699460A	WOODWARD HOSPITAL & HEALTH	WOODWARD	OK	0.4705
200019120A	WOODWARD REGIONAL HOSPITAL	WOODWARD	OK	0.4705
100700610A	INTEGRIS RURAL HLTH INC	YUKON	OK	0.4304
200052390A	COLUMBIA MEMORIAL HOSPITAL	ASTORIA	OR	0.5575
100705790A	ST CHARLES MED CTR	BEND	OR	0.5952
200020080A	GRANDE RONDE HOSPITAL	LAGRANDE	OR	0.5977
200022440A	OREGON HEALTH & SCIENCE UNIVERSITY	PORTLAND	OR	0.4804
100705710A	ADVENTIST MEDICAL CENTER	PORTLAND	OR	0.4168
100705620A	GOOD SAMARITAN HOSPITAL &	PORTLAND	OR	0.4980
100705630A	EMANUEL HOSP & HEALTH CTR	PORTLAND	OR	0.4708
200013460A	CHAMBERSBURG HOSPITAL	CHAMBERSBURG	PA	0.4469
200058960A	EPHRATA COMMUNITY HOSPITAL	EPHRATA	PA	0.4359
200037380A	MILTON S HERSHEY MEDICAL CTR	HERSHEY	PA	0.4955

OHCA ID	Name	City	State	CCR
100689870A	POTTSTOWN MEM MEDI CTR	POTTSTOWN	PA	0.2603
200011070A	MEDICAL UNIVERSITY HOSPITAL AUTHORITY	CHARLESTON	SC	0.5100
200011400A	GRAND STRAND REG MED CTR	MYRTLE BEACH,	SC	0.2913
200028250A	PIEDMONT MEDICAL CENTER	ROCK HILL	SC	0.2662
100694220A	BROOKINGS HOSPITAL	BROOKINGS	SD	0.6685
100694180A	MID-DAKOTA HOSP	CHAMBERLAIN	SD	0.7023
100694070A	AVERA QUEEN OF PEACE HOSPITAL	MITCHELL	SD	0.4864
100694160A	RAPID CITY REGIONAL HSP	RAPID CITY	SD	0.4740
100694080A	AVERA MCKENNAN HOSPITAL	SIOUX FALLS	SD	0.3907
100694190A	STURGIS COMMUNITY HEALTH CARE CTR	STURGIS	SD	0.6978
200014150A	LAKE AREA HOSPITAL	WEBSTER	SD	1.0853
200027800A	HORIZON MEDICAL CENTER	DICKSON	TN	0.3419
100698150A	JACKSON-MADISON COUNTY	JACKSON	TN	0.3555
200036800A	GRANDVIEW MEDICAL CENTER	JASPER	TN	0.3177
200058020A	UNIVERSITY OF TENNESSEE MEMORIAL HOSPITAL	KNOXVILLE	TN	0.3552
100697530A	TENN CHRISTIAN MED CTR	MADISON	TN	0.3706
100697520A	ST JUDE CHILDREN'S RESEARC	MEMPHIS	TN	0.7535
100697460A	METHODIST HEALTHCARE MEMPH	MEMPHIS	TN	0.3371
100697450A	VANDERBILT UNIV HOSPITAL	NASHVILLE	TN	0.4050
100697600C	CENTENNIAL MEDICAL CENTER	NASHVILLE	TN	0.3223
100697760A	HTI MEMORIAL HSP CORP	NASHVILLE	TN	0.2854
200031950A	NORTHCREST MEDICAL CENTER	SPRINGFIELD	TN	0.3776
100702050A	HENDRICK MED CTR	ABILENE	TX	0.3909
100689910A	NORTHWEST TEXAS HOSPITAL	AMARILLO	TX	0.2958
100701970A	BAPTIST/ST ANTHONY HLTH SY	AMARILLO	TX	0.3372
100702690A	PERMIAN GENERAL HOSPITAL	ANDREWS	TX	0.6773
200041950A	MEDICAL CENTER OF ARLINGTON	ARLINGTON	TX	0.2607
100700970A	SETON MED CTR	AUSTIN	TX	0.3708
100703090A	SCENIC MOUNTAIN MEDICAL	BIG SPRING	TX	0.2539
100702260A	BOWIE MEMORIAL HSP	BOWIE	TX	0.4096
200041500A	BROWNWOOD REG MED CTR	BROWNWOOD	TX	0.2876
100702270A	CHILDRESS REGIONAL MED CTR	CHILDRESS	TX	0.5852
100703110A	EAST TEXAS MEDICAL CTR	CLARKSVILLE	TX	0.4168
100703450A	PARKLAND MEMORIAL HOSPITAL	DALLAS	TX	0.4625
100702560A	BAYLOR CENTER FOR RESTORAT	DALLAS	TX	0.5271
100701950A	CHILDRENS MED CNTR	DALLAS	TX	0.4234
100701960A	METHODIST MEDICAL CTR	DALLAS	TX	0.4625
100697860A	MEDICAL CITY DALLAS HOSPITAL	DALLAS	TX	0.2520
100702650A	ZALE LIPSHY UNIV HOSP	DALLAS	TX	0.4428
100702580B	BAYLOR UNIV MED CTR	DALLAS	TX	0.3757
100702300A	DECATUR COMM HOSP DBA WISE	DECATUR	TX	0.4134
100702760A	TEXOMA MEDICAL CENTER HOME HEALTH	DENISON	TX	0.4263
200014270A	TEXOMA MEDICAL CENTER	DENISON	TX	0.2971
100706730A	COLUMBIA MEDICAL CENTER OF	DENTON	TX	0.2338
200006810A	FORT DUNCAN MEDICAL CENTER	EAGLE PASS	TX	0.3371
100701490A	DEL SOL MEDICAL CENTER	EL PASO	TX	0.4263
100701490B	LAS PALMAS MEDICAL CENTER	EL PASO	TX	0.2158

OHCA ID	Name	City	State	CCR
100701770A	R E THOMASON GENERAL HOSP	EL PASO	TX	0.4489
100703510A	ELECTRA MEMORIAL HOSPITAL	ELECTRA	TX	0.5906
100690130A	HUGULEY MEM MED CTR	FORT WORTH	TX	0.2672
100703270A	HARRIS METHODIST FT WORTH	FORT WORTH	TX	0.4719
100702730A	COOK FORT WORTH CHILD MC	FORT WORTH	TX	0.5061
200060080A	PLAZA MEDICAL CENTER FORT WORTH	FT WORTH	TX	0.4263
100702200A	NORTH TEXAS MEDICAL CENTER	GAINESVILLE	TX	0.4933
100702170B	BAYLOR MEDICAL CENTER AT GARLAND	GARLAND	TX	0.4013
200043710A	BAYLOR MEDICAL CENTER AT GRAPEVINE	GRAPEVINE	TX	0.4313
100703220A	CLAY CO MEM HOSP	HENRIETTA	TX	0.4324
100701440A	HILL REGIONAL HOSPITAL	HILLSBORO	TX	0.3248
100700950A	TEXAS CHILDRENS HSP	HOUSTON	TX	0.4285
100701050A	ST LUKES EPISCOPAL	HOUSTON	TX	0.3430
200027170A	BAYLOR MEDICAL CENTER AT IRVING	IRVING	TX	0.4263
200023570A	LAS COLINAS MEDICAL CENTER	IRVING	TX	0.3808
100703460A	JACK COUNTY HOSP	JACKSBORO	TX	0.7535
100701560A	SID PETERSON MEM HSP	KERRVILLE	TX	0.5671
100701380A	METROPLEX HOSP	KILLEEN	TX	0.2842
200052960A	MEDICAL ARTS HOSPITAL	LAMESA	TX	0.5691
200030960A	LAREDO MEDICAL CENTER	LAREDO	TX	0.3735
100689660A	MEDICAL CENTER OF LEWISVIL	LEWISVILLE	TX	0.2603
200019900A	LONGVIEW MEDICAL CTR LP	LONGVIEW	TX	0.2652
100820380B	LUBBOCK COUNTY HOSPITAL DI	LUBBOCK	TX	0.3378
100703160A	COVENANT HEALTH SYSTEM	LUBBOCK	TX	0.2053
100701930A	MEMORIAL MEDICAL CENTER OF EAST TX	LUFKIN	TX	0.2742
200026520A	NORTH CENTRAL MEDICAL CENTER	MCKINNEY	TX	0.2486
100692820A	MESQUITE COMMUNITY HOSPITAL	MESQUITE	TX	0.2677
100695730A	MESQUITE COMM HSP	MESQUITE	TX	0.2677
100698560A	DESERT SPRINGS MED CENTER	MIDLAND	TX	0.4005
100703430A	TITUS COUNTY MEM HOSP	MOUNT PLEASANT	TX	0.4563
100697870A	COLUMBIA NORTH HILLS HOSP	N RICHLAND HILL	TX	0.2494
100703210A	NACOGDOCHES MEMORIAL HOSPITAL	NACOGDOCHES	TX	0.3585
100702370A	NOCONA GEN HOSP	NOCONA	TX	0.6059
100702880A	MEDICAL CENTER HOSPITAL	ODESSA	TX	0.4344
200051040A	PALESTINE REG MED CTR	PALESTINE	TX	0.2610
100701990L	PARIS REGIONAL MEDICAL CENTER	PARIS	TX	0.3970
100701990A	CHRISTUS ST JOSEPH HEALTH	PARIS	TX	0.3970
100702980A	COVENANT HOSPITAL PLAINVIEW	PLAINVIEW	TX	0.3743
200027750A	MEDICAL CENTER OF PLANO	PLANO	TX	0.2791
100703300A	HARDEMAN COUNTY MEM HSP	QUANAH	TX	1.3952
200051280A	SAN ANGELO COMMUNITY MEDICAL CENTER	SAN ANGELO	TX	0.2493
200046720A	SOUTHWEST GENERAL HOSPITAL	SAN ANTONIO	TX	0.3276
200032440B	NORTH CENTRAL BAPTIST HOSPITAL	SAN ANTONIO	TX	0.4206
200032440A	NORTHEAST BAPTIST HOSPITAL	SAN ANTONIO	TX	0.3780
100701810A	BEXAR COUNTY HOSP DIST	SAN ANTONIO	TX	0.4602
100700980A	SANTA ROSA HLTH CARE CORP	SAN ANTONIO	TX	0.4096
100701670A	METHODIST HOSPITAL	SAN ANTONIO	TX	0.3103

OHCA ID	Name	City	State	CCR
100701670B	METHODIST SPECIALTY & TRANSPLANT HSP	SAN ANTONIO	TX	0.3418
200056250A	GUADALUPE VALLEY HOSPITAL	SEGUIN	TX	0.5008
100703420A	ROLLING PLAINS MEM HSP	SWEETWATER	TX	0.4995
100702140A	WADLEY REGIONAL MED CENTER	TEXARKANA	TX	0.3462
100698250A	HEALTHSOUTH REHAB HOSPITAL	TEXARKANA	TX	0.3453
100703010C	CHRISTUS ST MICHAEL HEALTH	TEXARKANA	TX	0.3091
100703010A	ST MICHAEL REHABILITATION	TEXARKANA	TX	0.5588
200033270A	ST LUKES COMM MED CTR - THE WOODLANDS	THE WOODLANDS	TX	0.5175
100701890A	TOMBALL REGIONAL HOSPITAL	TOMBALL	TX	0.3923
100702020A	MOTHER FRANCES HOSP	TYLER	TX	0.2265
100701200A	UVALDE MEMORIAL HOSPITAL	UVADLE	TX	0.4649
100703480A	WILBARGER GEN HOSP	VERNON	TX	0.5868
100700960A	PROVIDENCE HEALTH CTR	WACO	TX	0.3845
100701060A	HILLCREST BAPT MED CTR	WACO	TX	0.4095
200024960A	RED RIVER HOSPITAL	WICHITA FALLS	TX	0.3037
200018070A	TEXAS SPECIALTY HOSPITAL AT WICHITA FALLS	WICHITA FALLS	TX	0.4965
100703180A	WICHITA VALLEY REHAB	WICHITA FALLS	TX	0.4334
100702600A	UNITED REGIONAL HEALTH CAR	WICHITA FALLS	TX	0.3615
200050160A	PRESBYTERIAN HOSPITAL OF WINNSBORO	WINNSBORO	TX	0.4824
100706200J	COTTONWOOD HOSPITAL	MURRAY	UT	0.5059
100697970A	CASTLEVIEW HOSPITAL LLC	PRICE	UT	0.4324
100706200F	UTAH VALLEY REGIONAL MEDICAL CENTER	PROVO	UT	0.5516
100706200O	SEVIER VALLEY HOSPITAL	RICHFIELD	UT	0.5393
100706200B	IHC HEALTH SERVICES INC DB	SALT LAKE CITY	UT	0.7117
100706200N	LOGAN REG HOSP	SALT LAKE CITY	UT	0.5899
100706200L	LDS HOSPITAL	SALT LAKE CITY	UT	0.4847
100706200A	MCKAY-DEE HOSP CTR	SALT LAKE CITY	UT	0.4977
100705160A	UNIVERSITY OF UTAH HOSP	SALT LAKE CITY	UT	0.5246
100706200G	DIXIE MEDICAL CENTER	ST GEORGE	UT	0.5367
100695840A	MARY WASHINGTON HOSPITAL	FREDERICKSBURG	VA	0.5676
100695980D	SENTARA CAREPLEX HOSPITAL	HAMPTON	VA	0.4170
200053550A	MEMORIAL HOSPITAL OF MARTINSVILLE AND HENRY	MARTINSVILLE	VA	0.4700
200055700A	RIVERSIDE REGIONAL MEDICAL CENTER	NEWPORT NEWS	VA	0.2934
200039890A	MARY IMMACULATE HOSPITAL	NEWPORT NEWS	VA	0.3574
200041880A	BON SECOURS DEPAUL MEDICAL CENTER	NORFOLK	VA	0.3537
100695980B	SENTARA NORFOLK GENERAL HO	NORFOLK	VA	0.4052
100695980C	SENTARA LEIGH HOSPITAL	NORFOLK	VA	0.3682
200041890A	MARY VIEW HOSPITAL	PORTSMOUTH	VA	0.3460
200059500A	CARLION ROANOKE MEMORIAL HOSPITAL	ROANOKE	VA	0.4107
100695980A	SENTARA BAYSIDE HSPTL	VIRGINIA BEACH	VA	0.3302
100705340A	PROVIDENCE EVERETT MED CTR	EVERETT	WA	0.4263
200051700A	MORTON GENERAL HOSPITAL	MORTON	WA	0.9397
100705530A	VALLEY MEDICAL CENTER	RENTON	WA	0.4619
100705560A	SOUTHWEST WASHINGTON MEDICAL CENTER	VANCOUVER	WA	0.5296
100692430A	UNITED HOSPITAL SYSTEM INC	KENOSHA	WI	0.4273
200050150A	MERITER HOSPITAL INC	MADISON	WI	0.5030
100692380A	ST LUKES MEDICAL CENTER	MILWAUKEE	WI	0.3526

OHCA ID	Name	City	State	CCR
200055020A	WEST ALLIS MEMORIAL HOSPITAL	WEST ALLIS	WI	0.3390
100696050A	CHARLESTON AREA MEDICAL	CHARLESTON	WV	0.4847
200040100A	UNITED HOSPITAL CTR INC	CLARKSBURG	WV	0.5258
100690620A	FAIRMONT GENERAL HOSPITAL	FAIRMONT	WV	0.4667
100703970A	JOHNSON CO MEM HOSP	BUFFALO	WY	0.8331
100704050A	UNITED MEDICAL CENTER	CHEYENNE	WY	0.4411
100703950A	CAMPBELL COUNTY MEMORIAL HOSPITAL	GILLETTE	WY	0.6761
100698060A	LANDER VALLEY MED CTR	LANDER	WY	0.4606
100704070A	MEMORIAL HOSPITAL OF SWEETWATER COUNTY	ROCK SPRINGS	WY	0.6837
100704060A	MEMORIAL HOSP OF SHERIDAN	SHERIDAN	WY	0.5767

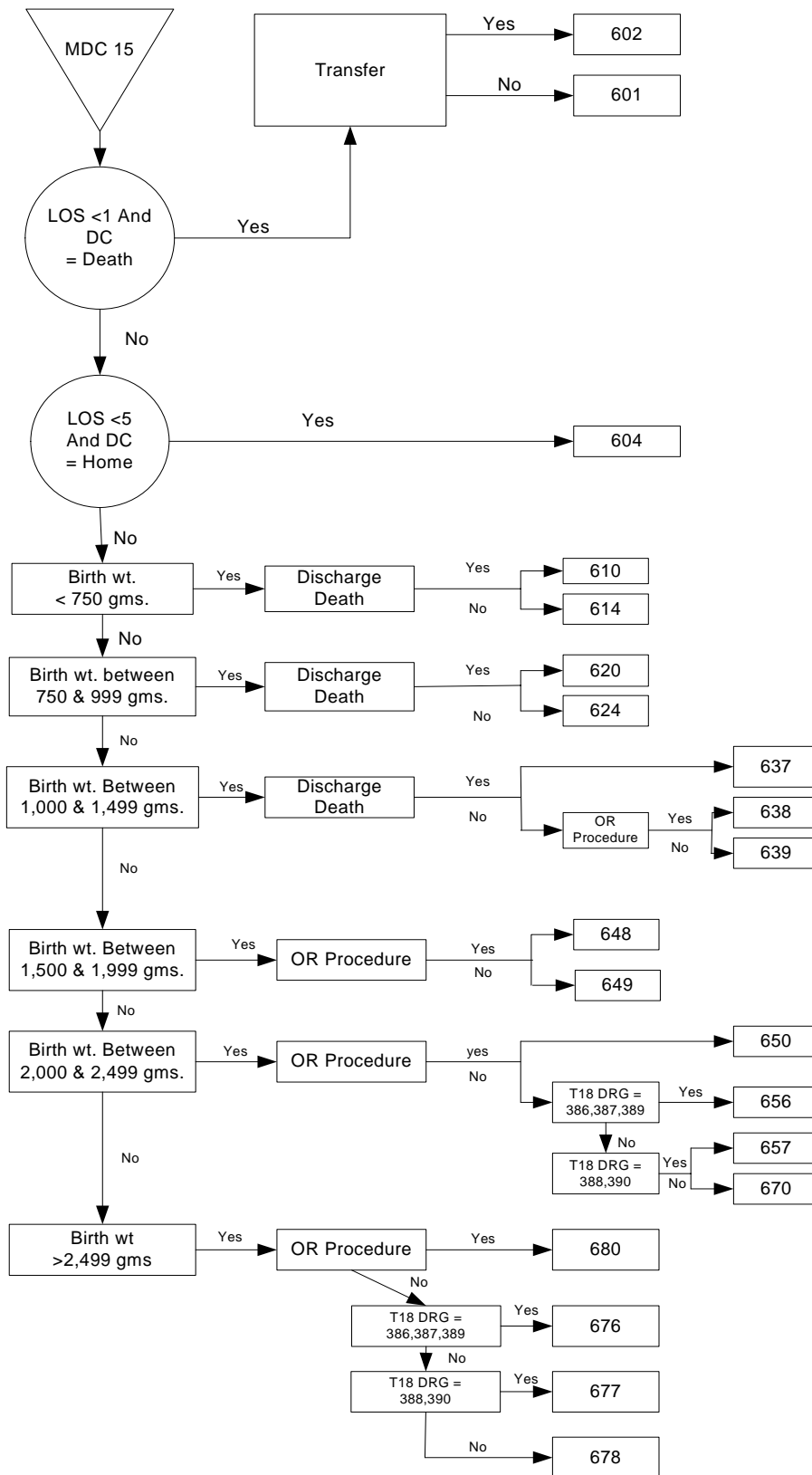
Appendix 4 – Procedure and Diagnosis Code Updates

Note: No procedure code updates for Grouper Version 22

Diagnosis Code Updates

Invalid Code	Updated Code	Federal Year	Grouper Version
V017	V0179	2004	22
5888	58889	2004	22
6180	61800	2004	22
6188	61889	2004	22
6213	62130	2004	22
6221	62210	2004	22
V723	V7231	2004	22
7583	75839	2004	22
V461	V4611	2004	22
5287	52871	2004	22
5213	52130	2004	22
7070	70700	2004	22
5252	52520	2004	22
5248	52489	2004	22
5245	52450	2004	22
5243	52430	2004	22
5242	52420	2004	22
0664	06640	2004	22
5214	52140	2004	22
5212	52120	2004	22
5211	52110	2004	22
347	34700	2004	22
2520	25200	2004	22
V724	V7240	2004	22
5232	52320	2004	22

Appendix 5 – Neonate Enhancement Logic



Appendix 6 – OHCA DRG Weights for Calendar Years 2002-2004 (based on FFS claims and managed-care encounter data)

DRG	Description	Weight
001	Craniotomy age >17 w cc	6.64
002	Craniotomy age >17 w/o cc	4.47
003	Craniotomy age 0-17	3.54
007	Periph & cranial nerve & other nerv syst proc w cc	3.74
008	Periph & cranial nerve & other nerv syst proc w/o cc	2.40
009	Spinal disorders & injuries	4.54
010	Nervous system neoplasms w cc	2.03
011	Nervous system neoplasms w/o cc	1.48
012	Degenerative nervous system disorders	1.43
013	Multiple sclerosis & cerebellar ataxia	1.26
014	Intracranial hemorrhage or cerebral infarction	2.19
015	Nonspecific cva & precerebral occlusion w/o infarct	1.32
016	Nonspecific cerebrovascular disorders w cc	2.13
017	Nonspecific cerebrovascular disorders w/o cc	1.62
018	Cranial & peripheral nerve disorders w cc	1.11
019	Cranial & peripheral nerve disorders w/o cc	0.88
020	Nervous system infection except viral meningitis	2.16
021	Viral meningitis	0.68
022	Hypertensive encephalopathy	1.42
023	Nontraumatic stupor & coma	0.83
024	Seizure & headache age >17 w cc	1.07
025	Seizure & headache age >17 w/o cc	0.74
026	Seizure & headache age 0-17	0.73
027	Traumatic stupor & coma, coma >1 hr	2.06
028	Traumatic stupor & coma, coma <1 hr age >17 w cc	4.18
029	Traumatic stupor & coma, coma <1 hr age >17 w/o cc	2.31
030	Traumatic stupor & coma, coma <1 hr age 0-17	1.00
031	Concussion age >17 w cc	0.96
032	Concussion age >17 w/o cc	0.56
033	Concussion age 0-17	0.50
034	Other disorders of nervous system w cc	1.97
035	Other disorders of nervous system w/o cc	0.92
036	Retinal procedures	1.44
037	Orbital procedures	3.35
039	Lens procedures with or without vitrectomy	1.01
040	Extraocular procedures except orbit age >17	0.55
041	Extraocular procedures except orbit age 0-17	1.58
042	Intraocular procedures except retina, iris & lens	1.35
043	Hyphema	0.34
044	Acute major eye infections	0.61

DRG	Description	Weight
045	Neurological eye disorders	0.99
046	Other disorders of the eye age >17 w cc	0.96
047	Other disorders of the eye age >17 w/o cc	0.96
048	Other disorders of the eye age 0-17	1.51
049	Major head & neck procedures	3.88
050	Sialoadenectomy	1.51
052	Cleft lip & palate repair	0.87
053	Sinus & mastoid procedures age >17	2.22
054	Sinus & mastoid procedures age 0-17	1.58
055	Miscellaneous ear, nose, mouth & throat procedures	1.70
056	Rhinoplasty	1.12
057	T&A proc, except tonsillectomy &/or adenoidectomy only, age >17	1.13
058	T&A proc, except tonsillectomy &/or adenoidectomy only, age 0-17	0.91
059	Tonsillectomy &/or adenoidectomy only, age >17	0.93
060	Tonsillectomy &/or adenoidectomy only, age 0-17	0.86
062	Myringotomy w tube insertion age 0-17	0.99
063	Other ear, nose, mouth & throat O.R. procedures	2.14
064	Ear, nose, mouth & throat malignancy	1.94
065	Dysequilibrium	0.65
066	Epistaxis	0.72
067	Epiglottitis	0.86
068	Otitis media & uri age >17 w cc	0.80
069	Otitis media & uri age >17 w/o cc	0.54
070	Otitis media & uri age 0-17	0.42
071	Laryngotracheitis	0.33
072	Nasal trauma & deformity	0.94
073	Other ear, nose, mouth & throat diagnoses age >17	1.12
074	Other ear, nose, mouth & throat diagnoses age 0-17	0.68
075	Major chest procedures	4.57
076	Other resp system O.R. procedures w cc	3.89
077	Other resp system O.R. procedures w/o cc	2.04
078	Pulmonary embolism	1.68
079	Respiratory infections & inflammations age >17 w cc	2.29
080	Respiratory infections & inflammations age >17 w/o cc	1.53
081	Respiratory infections & inflammations age 0-17	1.65
082	Respiratory neoplasms	1.93
083	Major chest trauma w cc	1.18
084	Major chest trauma w/o cc	1.18
085	Pleural effusion w cc	1.83
086	Pleural effusion w/o cc	1.04
087	Pulmonary edema & respiratory failure	3.42
088	Chronic obstructive pulmonary disease	1.04
089	Simple pneumonia & pleurisy age >17 w cc	1.38
090	Simple pneumonia & pleurisy age >17 w/o cc	0.90
091	Simple pneumonia & pleurisy age 0-17	0.61

DRG	Description	Weight
092	Interstitial lung disease w cc	2.26
093	Interstitial lung disease w/o cc	0.67
094	Pneumothorax w cc	1.59
095	Pneumothorax w/o cc	0.83
096	Bronchitis & asthma age >17 w cc	0.96
097	Bronchitis & asthma age >17 w/o cc	0.68
098	Bronchitis & asthma age 0-17	0.51
099	Respiratory signs & symptoms w cc	0.98
100	Respiratory signs & symptoms w/o cc	0.67
101	Other respiratory system diagnoses w cc	1.07
102	Other respiratory system diagnoses w/o cc	0.67
103	Heart transplant or implant of heart assist system	11.39
104	Cardiac valve & other major cardiothoracic proc w cardiac cath	17.09
105	Cardiac valve & other major cardiothoracic proc w/o cardiac cath	10.96
106	Coronary bypass w ptca	9.13
107	Coronary bypass w cardiac cath	9.59
108	Other cardiothoracic procedures	7.05
109	Coronary bypass w/o cardiac cath	6.58
110	Major cardiovascular procedures w cc	6.67
111	Major cardiovascular procedures w/o cc	4.89
113	Amputation for circ system disorders except upper limb & toe	4.67
114	Upper limb & toe amputation for circ system disorders	2.47
115	Prm card pacem impl w ami/hf/shock or AICD lead or gnrtr proc	5.62
116	Other permanent cardiac pacemaker implant	3.96
117	Cardiac pacemaker revision except device replacement	2.12
118	Cardiac pacemaker device replacement	3.77
119	Vein ligation & stripping	0.90
120	Other circulatory system O.R. procedures	4.17
121	Circulatory disorders w AMI & major comp, discharged alive	2.60
122	Circulatory disorders w AMI w/o major comp, discharged alive	1.40
123	Circulatory disorders w AMI, expired	2.55
124	Circulatory disorders except AMI, w card cath & complex diag	2.09
125	Circulatory disorders except AMI, w card cath w/o complex diag	1.71
126	Acute & subacute endocarditis	3.59
127	Heart failure & shock	1.26
128	Deep vein thrombophlebitis	0.78
129	Cardiac arrest, unexplained	2.42
130	Peripheral vascular disorders w cc	1.43
131	Peripheral vascular disorders w/o cc	0.84
132	Atherosclerosis w cc	0.97
133	Atherosclerosis w/o cc	0.97
134	Hypertension	0.93
135	Cardiac congenital & valvular disorders age >17 w cc	1.56
136	Cardiac congenital & valvular disorders age >17 w/o cc	1.56
137	Cardiac congenital & valvular disorders age 0-17	4.53

DRG	Description	Weight
138	Cardiac arrhythmia & conduction disorders w cc	1.10
139	Cardiac arrhythmia & conduction disorders w/o cc	0.73
140	Angina pectoris	0.64
141	Syncope & collapse w cc	0.75
142	Syncope & collapse w/o cc	0.55
143	Chest pain	0.66
144	Other circulatory system diagnoses w cc	1.90
145	Other circulatory system diagnoses w/o cc	0.77
146	Rectal resection w cc	3.95
147	Rectal resection w/o cc	1.70
148	Major small & large bowel procedures w cc	5.39
149	Major small & large bowel procedures w/o cc	2.51
150	Peritoneal adhesiolysis w cc	3.50
151	Peritoneal adhesiolysis w/o cc	1.62
152	Minor small & large bowel procedures w cc	3.30
153	Minor small & large bowel procedures w/o cc	1.69
154	Stomach, esophageal & duodenal procedures age >17 w cc	6.35
155	Stomach, esophageal & duodenal procedures age >17 w/o cc	2.05
156	Stomach, esophageal & duodenal procedures age 0-17	1.43
157	Anal & stomal procedures w cc	1.64
158	Anal & stomal procedures w/o cc	0.85
159	Hernia procedures except inguinal & femoral age >17 w cc	2.07
160	Hernia procedures except inguinal & femoral age >17 w/o cc	1.17
161	Inguinal & femoral hernia procedures age >17 w cc	1.29
162	Inguinal & femoral hernia procedures age >17 w/o cc	1.09
163	Hernia procedures age 0-17	1.41
164	Appendectomy w complicated principal diag w cc	2.54
165	Appendectomy w complicated principal diag w/o cc	1.67
166	Appendectomy w/o complicated principal diag w cc	1.53
167	Appendectomy w/o complicated principal diag w/o cc	1.09
168	Mouth procedures w cc	1.41
169	Mouth procedures w/o cc	1.13
170	Other digestive system O.R. procedures w cc	5.15
171	Other digestive system O.R. procedures w/o cc	1.52
172	Digestive malignancy w cc	2.71
173	Digestive malignancy w/o cc	1.19
174	G.I. hemorrhage w cc	1.41
175	G.I. hemorrhage w/o cc	0.67
176	Complicated peptic ulcer	1.30
177	Uncomplicated peptic ulcer w cc	1.19
178	Uncomplicated peptic ulcer w/o cc	0.85
179	Inflammatory bowel disease	1.15
180	G.I. obstruction w cc	1.07
181	G.I. obstruction w/o cc	0.57
182	Esophagitis, gastroent & misc digest disorders age >17 w cc	0.98

DRG	Description	Weight
183	Esophagitis, gastroent & misc digest disorders age >17 w/o cc	0.69
184	Esophagitis, gastroent & misc digest disorders age 0-17	0.44
185	Dental & oral dis except extractions & restorations, age >17	1.13
186	Dental & oral dis except extractions & restorations, age 0-17	0.59
187	Dental extractions & restorations	1.10
188	Other digestive system diagnoses age >17 w cc	1.57
189	Other digestive system diagnoses age >17 w/o cc	0.92
190	Other digestive system diagnoses age 0-17	0.81
191	Pancreas, liver & shunt procedures w cc	5.41
192	Pancreas, liver & shunt procedures w/o cc	2.97
193	Biliary tract proc except only cholecyst w or w/o c.d.e. w cc	5.39
194	Biliary tract proc except only cholecyst w or w/o c.d.e. w/o cc	2.33
195	Cholecystectomy w c.d.e. w cc	4.41
196	Cholecystectomy w c.d.e. w/o cc	1.79
197	Cholecystectomy except by laparoscope w/o c.d.e. w cc	2.76
198	Cholecystectomy except by laparoscope w/o c.d.e. w/o cc	1.62
199	Hepatobiliary diagnostic procedure for malignancy	2.47
200	Hepatobiliary diagnostic procedure for non-malignancy	3.99
201	Other hepatobiliary or pancreas O.R. procedures	6.26
202	Cirrhosis & alcoholic hepatitis	2.03
203	Malignancy of hepatobiliary system or pancreas	1.82
204	Disorders of pancreas except malignancy	1.41
205	Disorders of liver except malig,cirr,alc hepa w cc	2.05
206	Disorders of liver except malig,cirr,alc hepa w/o cc	1.35
207	Disorders of the biliary tract w cc	1.48
208	Disorders of the biliary tract w/o cc	0.68
209	Major joint & limb reattachment procedures of lower extremity	3.79
210	Hip & femur procedures except major joint age >17 w cc	3.56
211	Hip & femur procedures except major joint age >17 w/o cc	2.16
212	Hip & femur procedures except major joint age 0-17	1.81
213	Amputation for musculoskeletal system & conn tissue disorders	2.49
216	Biopsies of musculoskeletal system & connective tissue	2.74
217	Wnd debrid & skn grft except hand,for muscskelet & conn tiss dis	4.99
218	Lower extrem & humer proc except hip,foot,femur age >17 w cc	2.61
219	Lower extrem & humer proc except hip,foot,femur age >17 w/o cc	1.73
220	Lower extrem & humer proc except hip,foot,femur age 0-17	1.18
223	Major shoulder/elbow proc, or other upper extremity proc w cc	1.50
224	Shoulder,elbow or forearm proc,exc major joint proc, w/o cc	1.05
225	Foot procedures	1.50
226	Soft tissue procedures w cc	2.88
227	Soft tissue procedures w/o cc	1.36
228	Major thumb or joint proc,or oth hand or wrist proc w cc	2.04
229	Hand or wrist proc, except major joint proc, w/o cc	1.10
230	Local excision & removal of int fix devices of hip & femur	1.70
232	Arthroscopy	0.57

DRG	Description	Weight
233	Other musculoskelet sys & conn tiss O.R. proc w cc	3.52
234	Other musculoskelet sys & conn tiss O.R. proc w/o cc	3.52
235	Fractures of femur	0.80
236	Fractures of hip & pelvis	0.99
237	Sprains, strains, & dislocations of hip, pelvis & thigh	0.74
238	Osteomyelitis	1.84
239	Pathological fractures & musculoskeletal & conn tiss malignancy	1.72
240	Connective tissue disorders w cc	1.92
241	Connective tissue disorders w/o cc	0.81
242	Septic arthritis	0.86
243	Medical back problems	0.90
244	Bone diseases & specific arthropathies w cc	0.99
245	Bone diseases & specific arthropathies w/o cc	0.65
246	Non-specific arthropathies	0.68
247	Signs & symptoms of musculoskeletal system & conn tissue	0.74
248	Tendonitis, myositis & bursitis	1.13
249	Aftercare, musculoskeletal system & connective tissue	1.00
250	Fx, sprn, strn & disl of forearm, hand, foot age >17 w cc	0.96
251	Fx, sprn, strn & disl of forearm, hand, foot age >17 w/o cc	0.96
252	Fx, sprn, strn & disl of forearm, hand, foot age 0-17	0.55
253	Fx, sprn, strn & disl of uparm,lowleg ex foot age >17 w cc	1.14
254	Fx, sprn, strn & disl of uparm,lowleg ex foot age >17 w/o cc	1.00
255	Fx, sprn, strn & disl of uparm,lowleg ex foot age 0-17	0.58
256	Other musculoskeletal system & connective tissue diagnoses	2.04
257	Total mastectomy for malignancy w cc	1.75
258	Total mastectomy for malignancy w/o cc	1.16
259	Subtotal mastectomy for malignancy w cc	1.13
260	Subtotal mastectomy for malignancy w/o cc	1.09
261	Breast proc for non-malignancy except biopsy & local excision	1.31
262	Breast biopsy & local excision for non-malignancy	1.19
263	Skin graft &/or debrid for skn ulcer or cellulitis w cc	3.97
264	Skin graft &/or debrid for skn ulcer or cellulitis w/o cc	1.50
265	Skin graft &/or debrid except for skin ulcer or cellulitis w cc	2.56
266	Skin graft &/or debrid except for skin ulcer or cellulitis w/o cc	1.57
267	Perianal & pilonidal procedures	0.73
268	Skin, subcutaneous tissue & breast plastic procedures	1.64
269	Other skin, subcut tiss & breast proc w cc	2.22
270	Other skin, subcut tiss & breast proc w/o cc	1.07
271	Skin ulcers	2.00
272	Major skin disorders w cc	1.05
273	Major skin disorders w/o cc	0.45
274	Malignant breast disorders w cc	1.32
275	Malignant breast disorders w/o cc	0.12
276	Non-maligant breast disorders	0.87
277	Cellulitis age >17 w cc	1.26

DRG	Description	Weight
278	Cellulitis age >17 w/o cc	0.74
279	Cellulitis age 0-17	0.56
280	Trauma to the skin, subcut tiss & breast age >17 w cc	0.97
281	Trauma to the skin, subcut tiss & breast age >17 w/o cc	0.86
282	Trauma to the skin, subcut tiss & breast age 0-17	0.68
283	Minor skin disorders w cc	1.25
284	Minor skin disorders w/o cc	0.42
285	Amputat of lower limb for endocrine,nutrit,& metabol disorders	3.16
286	Adrenal & pituitary procedures	3.50
287	Skin grafts & wound debrid for endoc, nutrit & metab disorders	2.04
288	O.R. procedures for obesity	4.26
289	Parathyroid procedures	1.89
290	Thyroid procedures	1.16
291	Thyroglossal procedures	0.58
292	Other endocrine, nutrit & metab O.R. proc w cc	2.95
293	Other endocrine, nutrit & metab O.R. proc w/o cc	2.61
294	Diabetes age >35	1.10
295	Diabetes age 0-35	0.83
296	Nutritional & misc metabolic disorders age >17 w cc	1.26
297	Nutritional & misc metabolic disorders age >17 w/o cc	0.86
298	Nutritional & misc metabolic disorders age 0-17	0.46
299	Inborn errors of metabolism	1.40
300	Endocrine disorders w cc	1.45
301	Endocrine disorders w/o cc	1.02
302	Kidney transplant	8.28
303	Kidney,ureter & major bladder procedures for neoplasm	5.41
304	Kidney,ureter & major bladder proc for non-neopl w cc	2.99
305	Kidney,ureter & major bladder proc for non-neopl w/o cc	1.97
306	Prostatectomy w cc	2.65
307	Prostatectomy w/o cc	1.04
308	Minor bladder procedures w cc	1.66
309	Minor bladder procedures w/o cc	1.47
310	Transurethral procedures w cc	1.51
311	Transurethral procedures w/o cc	1.08
312	Urethral procedures, age >17 w cc	1.56
313	Urethral procedures, age >17 w/o cc	1.54
314	Urethral procedures, age 0-17	1.82
315	Other kidney & urinary tract O.R. procedures	2.81
316	Renal failure	1.76
317	Admit for renal dialysis	1.28
318	Kidney & urinary tract neoplasms w cc	1.52
319	Kidney & urinary tract neoplasms w/o cc	0.76
320	Kidney & urinary tract infections age >17 w cc	1.05
321	Kidney & urinary tract infections age >17 w/o cc	0.68
322	Kidney & urinary tract infections age 0-17	0.53

DRG	Description	Weight
323	Urinary stones w cc, &/or esw lithotripsy	0.96
324	Urinary stones w/o cc	0.63
325	Kidney & urinary tract signs & symptoms age >17 w cc	0.89
326	Kidney & urinary tract signs & symptoms age >17 w/o cc	0.76
327	Kidney & urinary tract signs & symptoms age 0-17	0.86
328	Urethral stricture age >17 w cc	1.03
329	Urethral stricture age >17 w/o cc	0.54
330	Urethral stricture age 0-17	0.51
331	Other kidney & urinary tract diagnoses age >17 w cc	1.45
332	Other kidney & urinary tract diagnoses age >17 w/o cc	0.96
333	Other kidney & urinary tract diagnoses age 0-17	1.20
334	Major male pelvic procedures w cc	2.59
335	Major male pelvic procedures w/o cc	1.58
336	Transurethral prostatectomy w cc	1.20
337	Transurethral prostatectomy w/o cc	0.98
338	Testes procedures, for malignancy	3.01
339	Testes procedures, non-malignancy age >17	1.29
340	Testes procedures, non-malignancy age 0-17	1.37
341	Penis procedures	1.41
343	Circumcision age 0-17	0.28
344	Other male reproductive system O.R. procedures for malignancy	1.33
345	Other male reproductive system O.R. proc except for malignancy	1.85
346	Malignancy, male reproductive system, w cc	2.11
347	Malignancy, male reproductive system, w/o cc	0.54
348	Benign prostatic hypertrophy w cc	0.88
349	Benign prostatic hypertrophy w/o cc	0.18
350	Inflammation of the male reproductive system	0.88
352	Other male reproductive system diagnoses	1.40
353	Pelvic evisceration, radical hysterectomy & radical vulvectomy	3.07
354	Uterine,adnexa proc for non-ovarian/adnexal malig w cc	1.97
355	Uterine,adnexa proc for non-ovarian/adnexal malig w/o cc	1.13
356	Female reproductive system reconstructive procedures	1.06
357	Uterine & adnexa proc for ovarian or adnexal malignancy	2.23
358	Uterine & adnexa proc for non-malignancy w cc	1.59
359	Uterine & adnexa proc for non-malignancy w/o cc	1.16
360	Vagina, cervix & vulva procedures	1.48
361	Laparoscopy & incisional tubal interruption	1.13
362	Endoscopic tubal interruption	1.05
363	D&C, conization & radio-implant, for malignancy	1.28
364	D&C, conization except for malignancy	0.94
365	Other female reproductive system O.R. procedures	1.68
366	Malignancy, female reproductive system w cc	1.73
367	Malignancy, female reproductive system w/o cc	1.21
368	Infections, female reproductive system	0.82
369	Menstrual & other female reproductive system disorders	0.66

DRG	Description	Weight
370	Cesarean section w cc	1.10
371	Cesarean section w/o cc	0.89
372	Vaginal delivery w complicating diagnoses	0.68
373	Vaginal delivery w/o complicating diagnoses	0.52
374	Vaginal delivery w sterilization &/or D&C	0.88
375	Vaginal delivery w O.R. proc except steril &/or D&C	0.76
376	Postpartum & post abortion diagnoses w/o O.R. procedure	0.74
377	Postpartum & post abortion diagnoses w O.R. procedure	1.73
378	Ectopic pregnancy	1.21
379	Threatened abortion	0.45
380	Abortion w/o D&C	0.53
381	Abortion w D&C, aspiration curettage or hysterotomy	0.75
382	False labor	0.29
383	Other antepartum diagnoses w medical complications	0.50
384	Other antepartum diagnoses w/o medical complications	0.39
392	Splenectomy age >17	2.93
393	Splenectomy age 0-17	2.11
394	Other O.R. procedures of the blood and blood forming organs	3.96
395	Red blood cell disorders age >17	1.14
396	Red blood cell disorders age 0-17	0.68
397	Coagulation disorders	2.32
398	Reticuloendothelial & immunity disorders w cc	1.53
399	Reticuloendothelial & immunity disorders w/o cc	0.74
401	Lymphoma & non-acute leukemia w other O.R. proc w cc	7.96
402	Lymphoma & non-acute leukemia w other O.R. proc w/o cc	2.62
403	Lymphoma & non-acute leukemia w cc	3.08
404	Lymphoma & non-acute leukemia w/o cc	1.70
405	Acute leukemia w/o major O.R. procedure age 0-17	7.83
406	Myeloprolif disord or poorly diff neopl w maj O.R.proc w cc	4.28
407	Myeloprolif disord or poorly diff neopl w maj O.R.proc w/o cc	2.24
408	Myeloprolif disord or poorly diff neopl w other O.R.proc	2.39
409	Radiotherapy	2.60
410	Chemotherapy w/o acute leukemia as secondary diagnosis	1.40
411	History of malignancy w/o endoscopy	2.17
412	History of malignancy w endoscopy	1.57
413	Other myeloprolif dis or poorly diff neopl diag w cc	2.12
414	Other myeloprolif dis or poorly diff neopl diag w/o cc	1.16
415	O.R. procedure for infectious & parasitic diseases	5.12
416	Septicemia age >17	2.55
417	Septicemia age 0-17	0.85
418	Postoperative & post-traumatic infections	1.23
419	Fever of unknown origin age >17 w cc	1.49
420	Fever of unknown origin age >17 w/o cc	0.75
421	Viral illness age >17	0.75
422	Viral illness & fever of unknown origin age 0-17	0.44

DRG	Description	Weight
423	Other infectious & parasitic diseases diagnoses	2.28
424	O.R. procedure w principal diagnoses of mental illness	5.38
425	Acute adjustment reaction & psychosocial dysfunction	0.74
426	Depressive neuroses	0.59
427	Neuroses except depressive	0.58
428	Disorders of personality & impulse control	0.71
429	Organic disturbances & mental retardation	1.29
430	Psychoses	0.77
431	Childhood mental disorders	0.69
432	Other mental disorder diagnoses	1.43
433	Alcohol/drug abuse or dependence, left ama	0.55
439	Skin grafts for injuries	2.84
440	Wound debridements for injuries	2.24
441	Hand procedures for injuries	1.55
442	Other O.R. procedures for injuries w cc	3.85
443	Other O.R. procedures for injuries w/o cc	1.29
444	Traumatic injury age >17 w cc	0.76
445	Traumatic injury age >17 w/o cc	0.67
446	Traumatic injury age 0-17	0.61
447	Allergic reactions age >17	0.60
448	Allergic reactions age 0-17	0.20
449	Poisoning & toxic effects of drugs age >17 w cc	1.16
450	Poisoning & toxic effects of drugs age >17 w/o cc	0.55
451	Poisoning & toxic effects of drugs age 0-17	0.43
452	Complications of treatment w cc	1.22
453	Complications of treatment w/o cc	0.65
454	Other injury, poisoning & toxic effect diag w cc	1.83
455	Other injury, poisoning & toxic effect diag w/o cc	0.63
461	O.R. proc w diagnoses of other contact w health services	3.12
462	Rehabilitation	2.50
463	Signs & symptoms w cc	0.81
464	Signs & symptoms w/o cc	0.59
465	Aftercare w history of malignancy as secondary diagnosis	1.30
466	Aftercare w/o history of malignancy as secondary diagnosis	1.21
467	Other factors influencing health status	0.97
468	Extensive O.R. procedure unrelated to principal diagnosis	5.33
471	Bilateral or multiple major joint procs of lower extremity	6.22
473	Acute leukemia w/o major O.R. procedure age >17	6.31
475	Respiratory system diagnosis with ventilator support	5.14
477	Non-extensive O.R. procedure unrelated to principal diagnosis	2.78
478	Other vascular procedures w cc	3.99
479	Other vascular procedures w/o cc	3.08
480	Liver transplant and/or intestinal transplant	11.39
481	Bone marrow transplant	15.96
482	Tracheostomy for face,mouth & neck diagnoses	5.11

DRG	Description	Weight
484	Craniotomy for multiple significant trauma	8.52
485	Limb reattachment, hip and femur proc for multiple significant trauma	8.03
486	Other O.R. procedures for multiple significant trauma	7.50
487	Other multiple significant trauma	3.65
488	Hiv w extensive O.R. procedure	7.75
489	Hiv w major related condition	3.16
490	Hiv w or w/o other related condition	1.29
491	Major joint & limb reattachment procedures of upper extremity	2.77
492	Chemo w acute leukemia as sdx or w use of high dose chemo agent	1.43
493	Laparoscopic cholecystectomy w/o c.d.e. w cc	2.09
494	Laparoscopic cholecystectomy w/o c.d.e. w/o cc	1.37
496	Combined anterior/posterior spinal fusion	9.11
497	Spinal fusion except cervical w cc	8.20
498	Spinal fusion except cervical w/o cc	7.15
499	Back & neck procedures except spinal fusion w cc	2.45
500	Back & neck procedures except spinal fusion w/o cc	1.45
501	Knee procedures w pdx of infection w cc	2.38
502	Knee procedures w pdx of infection w/o cc	1.02
503	Knee procedures w/o pdx of infection	1.74
504	Extensive burns or full thickness burns w MV 96+ hrs w skin graft	22.78
505	Extensive burns or full thickness burns w MV 96+ hrs w/o skin graft	5.25
506	Full thickness burn w skin graft or inhal inj w cc or sig trauma	6.92
507	Full thickness burn w skin grft or inhal inj w/o cc or sig trauma	1.97
508	Full thickness burn w/o skin grft or inhal inj w cc or sig trauma	1.52
509	Full thickness burn w/o skin grft or inh inj w/o cc or sig trauma	1.14
510	Non-extensive burns w cc or significant trauma	3.43
511	Non-extensive burns w/o cc or significant trauma	0.65
512	Simultaneous pancreas/kidney transplant	11.48
515	Cardiac defibrillator implant w/o cardiac cath	7.62
516	Percutaneous cardiovascular procedures w AMI	3.99
517	Percutaneous cardiovascular proc w non-drug eluting stent w/o AMI	3.47
518	Percutaneous cardiovasc proc w/o coronary artery stent or AMI	3.20
519	Cervical spinal fusion w cc	3.60
520	Cervical spinal fusion w/o cc	2.80
521	Alcohol/drug abuse or dependence w cc	0.89
522	Alcohol/drug abuse or dependence w rehabilitation therapy w/o cc	0.54
523	Alcohol/drug abuse or dependence w/o rehabilitation therapy w/o cc	0.51
524	Transient ischemia	0.85
526	Percutaneous cardiovascular proc w drug-eluting stent w AMI	4.80
527	Percutaneous cardiovascular proc w drug-eluting stent w/o AMI	4.36
528	Intracranial vascular procedures w pdx hemorrhage	11.19
529	Ventricular shunt procedures w cc	3.25
530	Ventricular shunt procedures w/o cc	1.57
531	Spinal procedures w cc	7.12
532	Spinal procedures w/o cc	3.01

DRG	Description	Weight
533	Extracranial procedures w cc	3.48
534	Extracranial procedures w/o cc	2.18
535	Cardiac defib implant w cardiac cath w ami/hf/shock	9.91
536	Cardiac defib implant w cardiac cath w/o ami/hf/shock	8.84
537	Local excision & removal of int fix devices except hip & femur w cc	2.16
538	Local excision & removal of int fix devices except hip & femur w/o cc	1.78
539	Lymphoma & leukemia w major O.R. procedure w cc	9.89
540	Lymphoma & leukemia w major O.R. procedure w/o cc	1.97
541	Trach w MV 96+ hrs or PDX exc face, mouth & neck diag w maj O.R.	24.89
542	Trach w MV 96+ hrs or PDX exc face, mouth & neck diag w/o maj O.R.	16.60
543	Craniotomy w implant of chemo agent or acute complex CNS PDX	8.01
601	Died w/in one day, same hosp	0.63
602	Died w/in one day, recv hosp	1.43
604	Transferred w/in 4 days	0.37
610	Less than 750 grams - discharged dead	8.99
614	Less than 750 grams - discharged alive	16.91
620	Less than 1000 grams - discharged dead	12.67
624	Less than 1000 grams - discharged alive	13.62
637	Less than 1500 grams - discharged dead	6.70
638	Less than 1500 grams - O.R. performed	14.80
639	Less than 1500 grams - no O.R. performed	8.16
648	Less than 2000 grams - O.R. excl circumc	10.61
649	Less than 2000 grams - no O.R. performed	3.69
650	Less than 2500 grams - O.R. performed	13.85
656	Less than 2500 grams - no O.R.- major dx	2.92
657	Less than 2500 grams - no O.R.- minor dx	0.89
670	Less than 2500 grams - no O.R.- no dx pr	0.29
676	2500 and greater grams - no O.R.- major	2.04
677	2500 and greater grams - no O.R.- minor	0.38
678	2500 and greater grams - no O.R.- no dx	0.14
680	2500 and greater grams - O.R. performed	11.20
006	Carpal tunnel release	0.73
038	Primary iris procedures	0.47
051	Salivary gland procedures except sialoadenectomy	1.00
061	Myringotomy w tube insertion age >17	0.99
342	Circumcision age >17	0.78
351	Sterilization, male	0.24
476	Prostatic O.R. procedure unrelated to principal diagnosis	1.20
495	Lung transplant	26.43
513	Pancreas transplant	10.85
525	Other heart assist system implant	14.37

Appendix 7 – Base Rate Peer Groups

OHCA ID	Name	Big	Urban	Teach	Sole	CAH	Peer Group	City	State
200051060A	ATHENS LIMESTONE HOSPITAL	0	1	0	0	0	4	ATHENS	AL
100698200A	HUNTSVILLE HOSP	1	1	1	0	0	3	HUNTSVILLE	AL
100699110A	LITTLE RIVER MEM HSP	0	0	0	0	1	3	ASHDOWN	AR
100698710C	NORTHWEST MEDICAL CENTER OF BENTON	0	1	0	0	0	4	BENTONVILLE	AR
100699090A	JOHN ED CHAMBERS MEMORIAL HOSPITAL	0	0	0	1	0	2	DANVILLE	AR
100699000A	DEQUEEN REGIONAL MEDICAL	0	0	0	0	0	1	DEQUEEN	AR
100698930A	WASHINGTON REGIONAL MEDICA	0	1	1	0	0	4	FAYETTEVILLE	AR
100726400C	HEALTHSOUTH OF FORT SMITH	0	1	0	0	0	4	FORT SMITH	AR
100698690A	ST EDWARDS MERCY MED CTR	1	1	1	0	0	3	FORT SMITH	AR
100698680A	SPARKS REG MED CTR	0	1	1	0	0	4	FORT SMITH	AR
200012010B	VISTA HEALTH OF FT SMITH	0	1	0	0	0	4	FT SMITH	AR
100698810A	GRAVETTE MED CTR HOSP	0	1	0	0	0	4	GRAVETTE	AR
100697990A	MEDICAL PARK HOSPITAL	0	0	0	1	0	2	HOPE	AR
100817680A	ARKANSAS CHILD HOSP	0	1	1	0	0	4	LITTLE ROCK	AR
100698670A	ST VINCENT INFIRMARY	1	1	1	0	0	3	LITTLE ROCK	AR
100699100B	UNIVERSITY OF ARK HOSP	1	1	1	0	0	3	LITTLE ROCK	AR
100698950A	MENA MEDICAL CENTER	0	0	0	1	0	2	MENA	AR
100698940A	MERCY HOSPITAL TURNER MEMO	0	0	0	0	1	3	OZARK	AR
100698840A	NORTH LOGAN MEM HOSP	0	0	0	0	1	3	PARIS	AR
100698730A	ST MARY-ROGERS M H	0	1	0	0	0	4	ROGERS	AR
100699060A	SILOAM SPRINGS MEMORIAL HOSPITAL	0	1	0	0	0	4	SILOAM SPRINGS	AR
100698710A	NORTHWEST HEALTH SYSTEM	0	1	1	0	0	4	SPRINGDALE	AR
100696600A	SUMMIT MEDICAL CENTER	0	1	0	0	0	4	VAN BUREN	AR
100698850A	MERCY HOSP SCOTT CO	0	0	0	0	1	3	WALDRON	AR
100704860A	FLAGSTAFF MEDICAL CTR	0	1	0	1	0	4	FLAGSTAFF	AZ
100705070A	BANNER THUNDERBIRD MEDICAL CENTER	1	1	1	0	0	3	GLENDALE	AZ
100706210A	KINGMAN REGIONAL MEDICAL CENTER	0	1	1	1	0	5	KINGMAN	AZ
100689570A	BANNER DESERT MEDICAL CENTER	1	1	1	0	0	3	MESA	AZ
100691660A	BANNER BAYWOOD MEDICAL CENTER	1	1	0	0	0	2	MESA	AZ
100846760A	BANNER MESA MEDICAL CENTER	1	1	0	0	0	2	MESA	AZ
200029160A	PAGE HOSPITAL	0	1	0	0	0	4	PAGE	AZ
200043550A	PAYSON REG MEDICAL CTR	0	0	0	1	0	2	PAYSON	AZ
100705060A	MARICOPA MEDICAL CENTER	1	1	1	0	0	3	PHOENIX	AZ
100704990A	PHOENIX CHILDRENS HOSP	0	1	1	0	0	4	PHOENIX	AZ
200060120A	BANNER ESTRELLA MEDICAL CENTER	0	0	0	0	1	3	PHOENIX	AZ
100690420A	BANNER GOOD SAMARITAN MEDICAL CENTER	1	1	1	0	0	3	PHOENIX	AZ
100696930A	ORLANDO REGIONAL HEALTHCARE	1	1	1	0	0	3	PHOENIX	AZ
100704980A	NAVAPACHE HOSPITAL	0	0	0	1	0	2	SHOWLOW	AZ
200055290A	DEL E WEBB MEMORIAL HOSPITAL	0	1	0	0	0	4	SUN CITY	AZ

OHCA ID	Name	Big	Urban	Teach	Sole	CAH	Peer Group	City	State
200006040A	WICKENBURG REGIONAL HEALTH CENTER	0	0	0	0	1	3	WICKENBURG	AZ
100704600A	PRESBYTERIAN KASEMAN HOSPI	0	1	0	0	0	4	YOUNGTOWN	AZ
200022870A	PALO VERDE HOSPITAL	0	1	0	1	0	4	BLYTHE	CA
200015230A	ENLOE MEDICAL CENTER	1	1	0	0	0	2	CHICO	CA
100706550A	LOMA LINDA UNIVERSITY MEDICAL CENTER	1	1	1	0	0	3	LOMA LINDA	CA
200035940A	OAK VALLEY HOSPITAL DISTRICT	0	1	0	0	0	4	OAKDALE	CA
100706470A	UCI MEDICAL CENTER	1	1	1	0	0	3	ORANGE	CA
100706420A	CHILDRENS HOSP & HLTH CTR	0	1	1	0	0	4	SAN DIEGO	CA
100704510D	MEDICAL CENTER OF AURORA	1	1	1	0	0	3	AURORA	CO
100704570A	MEMORIAL HOSPITAL	1	1	0	0	0	2	COLORADO SPRING	CO
100704240A	DELTA COUNTY MEM HOSPITAL	0	0	0	0	0	1	DELTA	CO
100704480B	UNIVERSITY OF COLORADO HOSPITAL	0	1	1	0	0	4	DENVER	CO
100704090A	THE CHILDREN'S HOSPITAL ASSOCIATION	0	1	1	0	0	4	DENVER	CO
100704510G	ROSE MEDICAL CENTER	1	1	1	0	0	3	DENVER	CO
100704510C	PRESBYTERIAN /ST LUKE'S	1	1	1	0	0	3	DENVER	CO
100704510B	SWEDISH MEDICAL CENTER	1	1	1	0	0	3	ENGLEWOOD	CO
100704280A	VALLEY VIEW HOSPITAL ASSOCIATION	0	0	0	1	0	2	GLENWOOD SPRGS	CO
100704420A	MCKEE MEDICAL CENTER	0	1	0	0	0	4	LOVELAND	CO
100704440A	PARKVIEW EPISCOPAL HOSP	0	1	0	0	0	4	PUEBLO	CO
100704510H	NORTH SUBURBAN MEDICAL CENTER	0	1	1	0	0	4	THORTON	CO
100704370A	MT SAN RAFAEL HOSP	0	0	0	0	0	1	TRINIDAD	CO
200039370A	WATERBURY HOSPITAL	1	1	1	0	0	3	WATERBURY	CT
200061000A	HOWARD UNIVERSITY HOSPITAL	1	1	1	0	0	3	WASHINGTON	DC
200013280A	BARTOW MEMORIAL HOSPITAL	0	1	0	0	0	4	BARTOW	FL
100697060B	CORAL SPRINGS MEDICAL CENTER	0	1	0	0	0	4	CORAL SPRINGS	FL
200060650A	GULF BREEZE HOSPITAL	0	1	0	0	0	4	GULF BREEZE	FL
100696790A	HOLMES REGIONAL MED CTR	1	1	0	0	0	2	MELBOURNE	FL
100696860A	FLORIDA HOSPITAL MEDICAL	1	1	1	0	0	3	ORLANDO	FL
100697050A	BAY MEDICAL CENTER	1	1	0	0	0	2	PANAMA CITY	FL
100697060A	NORTH BROWARD MEDICAL CENTER	1	1	0	0	0	2	POMPANO BEACH	FL
200040240A	SARASOTA MEMORIAL HOSPITAL	1	1	0	0	0	2	SARASOTA	FL
200048710A	TAMPA GENERAL HOSPITAL	1	1	1	0	0	3	TAMPA	FL
100697070A	PARRISH MEDICAL CENTER	1	1	0	0	0	2	TITUSVILLE	FL
200044050A	REDMOND REGIONAL MEDICAL CENTER	0	0	0	0	0	1	ROME	GA
200034290A	EAST GEORGIA REG MED CTR	0	0	0	0	0	1	STATESBORO	GA
200048210A	KAPIOLANI MEDICAL CTR AT PALI MOMI	0	1	0	0	0	4	AIEA	HI
100706870A	HILO MEDICAL CENTER	0	0	0	1	0	2	HILO	HI
200031760A	STRAUB CLINIC AND HOSPITAL	0	1	1	0	0	4	HONOLULU	HI
100706860A	KAPIOLANI MEDICAL CENTER	0	1	1	0	0	4	HONOLULU	HI
200025690A	NORTH HAWAII COMMUNITY HOSPITAL	0	0	0	0	0	1	KAWUELA	HI
200053110A	WAHIAWA GENERAL HOSPITAL	0	1	1	0	0	4	WAHIAWA	HI

OHCA ID	Name	Big	Urban	Teach	Sole	CAH	Peer Group	City	State
100706880A	MAUI MEMORIAL HOSPITAL	0	0	0	1	0	2	WAILUKU	HI
200052340A	ST ANTHONY REGIONAL HOSPITAL	0	0	0	1	0	2	CARROLL	IA
100692900A	JENNIE EDMUNDSON HSP	0	1	1	0	0	4	CO BLUFFS	IA
100692940A	IOWA METHODIST MED CTR	1	1	1	0	0	3	DES MOINES	IA
100846730A	TRINITY REGIONAL MEDICAL CENTER	0	0	1	0	0	2	FORT DODGE	IA
100693080A	UNIVERSITY OF IOWA	1	1	1	0	0	3	IOWA CITY	IA
100696710A	MERCY MEDICAL CENTER-SIOUX CITY	0	1	1	0	0	4	SIOUX CITY	IA
100693030A	COVENANT MEDICAL CENTER	0	1	1	0	0	4	WATERLOO	IA
100693160A	MADISON COUNTY MEMORIAL HOSPITAL	0	0	0	0	1	3	WINTERSET	IA
100703830A	MERCY MEDICAL CENTER	0	1	0	0	0	4	NAMPA	ID
100703890A	PORTNEUF MEDICAL CENTER	0	1	1	0	0	4	POCATELLO	ID
100691160A	MEMORIAL HOSP S BEND	1	1	1	0	0	3	SOUTH BEND	ID
100691770A	MEMORIAL HOSPITAL OF CARBONDALE	0	0	1	0	0	2	CARBONDALE	IL
200019840A	RUSH PRESBYTERIAN ST LUKES MEDICAL CTR	1	1	1	0	0	3	CHICAGO	IL
200025900A	ST BERNARD HOSPITAL	0	1	1	0	0	4	CHICAGO	IL
100691770C	FERRELL HOSPITAL	0	0	0	0	0	1	ELDORADO	IL
100691520C	SOUTH SUBURBAN HOSPITAL	0	1	0	0	0	4	HAZEL CREST	IL
100691770B	HERRIN HOSPITAL	0	0	0	0	0	1	HERRIN	IL
200053360A	CONDELL MEDICAL CENTER	0	1	0	0	0	4	LIBERTYVILLE	IL
100691740A	LOYOLA UNIVERSITY MEDICAL CENTER	1	1	1	0	0	3	MAYWOOD	IL
100846720A	RED BUD REGIONAL HOSP	0	0	0	0	0	1	RED BUD	IL
100691580A	SWEDISH AMERICAN HOSPITAL	1	1	1	0	0	3	ROCKFORD	IL
100691810A	MEMORIAL MEDICAL CENTER	1	1	1	0	0	3	SPRINGFIELD	IL
200049420A	CGH MEDICAL CENTER	0	0	0	0	0	1	STERLING	IL
200016640A	PARKVIEW HOSPITAL INC	1	1	1	0	0	3	FORT WAYNE	IN
200033370A	HUNTINGTON MEMORIAL HOSPITAL	0	1	0	0	0	4	HUNTINGTON	IN
200052400A	ST ELIZABETH MEDICAL CENTER	0	1	0	0	0	4	LAFAYETTE	IN
200054040A	SAINT JOSEPH REGIONAL MEDICAL CENTER MISHAWAKA	0	1	1	0	0	4	MISHAWAKA	IN
200051480A	JAY COUNTY HOSPITAL	0	0	0	0	1	3	PORTLAND	IN
100691180A	SAINT JOSEPHS REGIONAL MEDICAL CENTER SOUTH BEND	1	1	1	0	0	3	SOUTH BEND	IN
200046450A	PERRY COUNTY MEMORIAL HOSPITAL	0	0	0	0	0	1	TELL CITY	IN
100691390A	GOOD SAMARITAN HOSPITAL	0	0	0	0	0	1	VINCENNES	IN
100694930A	SUMNER COUNTY HOSPITAL	0	0	0	0	1	3	CALDWELL	KS
100695380A	NEOSHO MEMORIAL REGIONAL MED CTR	0	0	0	0	0	1	CHANUTE	KS
100695360A	COFFEYVILLE REG MED CTR IN	0	0	0	0	0	1	COFFEYVILLE	KS
100694790A	SUSAN B ALLEN MEM HOSPITAL	0	1	0	0	0	4	EL DORADO	KS
100695030A	MORTON COUNTY HEALTH SYSTE	0	0	0	1	0	2	ELKHART	KS
100695270A	NEWMAN MEMORIAL CO HOSP	0	0	0	1	0	2	EMPORIA	KS
100694540A	ST CATHERINE HOSPITAL	0	0	1	1	0	2	GARDEN CITY	KS
100694940A	HOSPITAL DISTRICT #1	0	0	0	0	1	3	GIRARD	KS
100698520A	UNIVERSITY HOSPITAL	1	1	1	0	0	3	JACKSON	KS

OHCA ID	Name	Big	Urban	Teach	Sole	CAH	Peer Group	City	State
100695280A	THE UNIVERSITY OF KANSAS H	1	1	1	0	0	3	KANSAS CITY	KS
100695290A	LAWRENCE MEM HOSP	0	0	0	1	0	2	LAWRENCE	KS
100695070A	MEADE DISTRICT HOSPITAL	0	0	0	0	1	3	MEADE	KS
100695310A	WILSON COUNTY HOSPITAL	0	0	0	0	1	3	NEODESHA	KS
100694770A	NESS COUNTY DIST #2 HOSP	0	0	0	0	1	3	NESS CITY	KS
100694750A	OLATHE MEDICAL CENTER INC	1	1	0	0	0	2	OLATHE	KS
100694580A	MT CARMEL MEDICAL CENTER	0	0	0	0	1	3	PITTSBURG	KS
100695140A	PRATT REG MEDICAL CTR	0	0	0	1	0	2	PRATT	KS
200033230A	RUSSELL REGIONAL HOSPITAL	0	0	0	0	1	3	RUSSELL	KS
100695180A	SALINA REGIONAL HEALTH CE	0	0	1	1	0	2	SALINA	KS
100695170A	SEDAN CITY HOSPITAL	0	0	0	0	1	3	SEDAN	KS
100694630A	ST FRANCIS HOSP MED CTR	0	1	0	0	0	4	TOPEKA	KS
200007780A	KANSAS HEART HOSPITAL	0	1	0	0	0	4	WICHITA	KS
200002370A	GALICHIA HEART HOSPITAL LLC	0	1	0	0	0	4	WICHITA	KS
100695200A	VIA CHRISTI REG MED CTR	1	1	1	0	0	3	WICHITA	KS
100698010A	WESLEY MEDICAL CENTER LLC	1	1	1	0	0	3	WICHITA	KS
200013820A	KANSAS SURGERY & RECOVERY CENTER	0	1	0	0	0	4	WICHITA	KS
100697290A	HARDIN MEM HOSP	1	0	0	1	0	1	ELIZABETHTOWN	KY
200049760A	ST LUKE HOSPITAL WEST	0	1	1	0	0	4	FLORENCE	KY
200043930A	FRANKFORT HOSPITAL INC	0	0	0	0	0	1	FRANKFORT	KY
200022740A	CAVERNA MEMORIAL HOSPITAL	0	0	0	0	1	3	HORSE CAVE	KY
100697180A	N K C HOSPITAL	1	1	1	0	0	3	LOUISVILLE	KY
200043100A	KOSAIR CHILDREN HOSPITAL	1	1	1	0	0	3	LOUISVILLE	KY
100697180B	NORTON HOSPITAL INC	0	1	1	0	0	4	LOUISVILLE	KY
200053310A	JACKSON PURCHASE MEDICAL CENTER	0	0	0	0	0	1	MAYFIELD	KY
200059590A	OWENSBORO MEDICAL HEALTH SYSTEM	1	1	0	0	0	2	OWENSBORO	KY
200036510A	OUR LADY OF THE LAKE REG MED CTR	1	1	0	0	0	2	BATON ROUGE	LA
100699190A	RIVERLAND MEDICAL CTR	0	0	0	0	0	1	FERRIDAY	LA
100699250A	LEONARD J CHABERT MED CTR	0	1	1	0	0	4	HOUMA	LA
200051570A	WOMEN'S AND CHILDREN'S HOSPITAL INC	0	1	0	0	0	4	LAFAYETTE	LA
100699140A	CHILDRENS HOSPITAL	0	1	1	0	0	4	NEW ORLEANS	LA
100699240A	LSU HEALTH SCIENCE CENTER - SHREVEPORT	1	1	1	0	0	3	SHREVEPORT	LA
100699130A	CHRISTUS HLTH NORTHERN LA	1	1	1	0	0	3	SHREVEPORT	LA
200054360A	NORTH CADDO MEDICAL CENTER	0	1	1	0	1	5	VIVIAN	LA
200027690A	GLENWOOD REGIONAL MEDICAL CENTER	0	1	0	0	0	4	WEST MONROE	LA
100688990A	CHILDRENS HOSPITAL	1	1	1	0	0	3	BOSTON	MA
200049240A	BAY REGIONAL MEDICAL CENTER	1	1	1	0	0	3	BAY CITY	MI
100692320A	HURLEY MEDICAL CENTER	1	1	1	0	0	3	FLINT	MI
200015800A	GENESYS REGIONAL MEDICAL CENTER	1	1	1	0	0	3	FLINT	MI
100692130A	BRONSON METHODIST HOSP	1	1	1	0	0	3	KALAMAZOO	MI
200008270A	ST MARY MERCY HOSPITAL	1	1	0	0	0	2	LIVONIA	MI

OHCA ID	Name	Big	Urban	Teach	Sole	CAH	Peer Group	City	State
100692280A	LAKELAND HOSPITAL ST JOSEPH	1	1	0	0	0	2	ST JOSEPH	MI
200029490A	ALBERT LEA MEDICAL CENTER	0	0	0	0	0	1	ALBERT LEA	MN
200026130A	NORTH COUNTRY HEALTH SERVICES	0	0	0	1	0	2	BEMIDJI	MN
100703740A	ST VINCENT HOSP	0	1	1	0	0	4	BILLINGS	MN
100691640C	UNITY HOSPITAL	1	1	1	0	0	3	FRIDLEY	MN
200049170A	IMMANUEL ST JOSEPHS HOSPITAL	0	0	1	0	0	2	MANKATO	MN
200049710A	CHILDRENS HEALTH CARE	0	0	0	0	0	1	MINNEAPOLIS	MN
100691640A	ABBOTT NORTHWESTERN HOSPITAL	1	1	1	0	0	3	MINNEAPOLIS	MN
100692770A	FAIRVIEW UNIVERSITY MEDICAL	1	1	1	0	0	3	MINNEAPOLIS	MN
100692840A	HENNEPIN COUNTY MEDICAL C	0	1	1	0	0	4	MINNEAPOLIS	MN
100691640B	OWATONNA HOSPITAL	0	0	0	0	0	1	OWATONNA	MN
100692770C	FAIRVIEW NORTHLAND REGIONAL HOSPITAL	0	1	0	0	0	4	PRINCETON	MN
200022590A	ST FRANCIS REGIONAL MEDICAL CENTER	0	1	0	0	0	4	SHAKOPEE	MN
100692650A	THE ST CLOUD HOSP	1	1	1	0	0	3	ST CLOUD	MN
200050740A	HEALTHEAST ST JOSEPH	0	1	1	0	0	4	ST PAUL	MN
200044420A	HEALTHEAST WOODWINDS HOSPITAL	0	1	1	0	0	4	WOODBURY	MN
100693540B	HARRISON CO COMM HOSP	0	0	0	0	1	3	BETHANY	MO
100693790A	SKAGGS COMM HEALTH CTR	0	0	0	1	0	2	BRANSON	MO
200038710A	BATES COUNTY MEMORIAL HOSPITAL	0	0	0	1	0	2	BUTLER	MO
100693900A	CAMERON REGIONAL MEDICAL CENTER	0	1	0	0	0	4	CAMERON	MO
100693320A	JEFFERSON MEM HOSP	0	1	0	0	0	4	FESTUS	MO
200054910A	CALLAWAY COMMUNITY HOSPITAL	0	0	1	0	0	2	FULTON	MO
100693370A	TEXAS CO MEM HOSP	0	0	0	1	0	2	HOUSTON	MO
100693700A	ST JOHNS MED CTR	1	1	0	0	0	2	JOPLIN	MO
100693570A	FREEMAN HOSPITAL	0	1	1	0	0	4	JOPLIN	MO
100850900A	SAINT JOSEPH HEALTH CENTER	1	1	1	0	0	3	KANSAS CITY	MO
100693690A	ST LUKES	1	1	1	0	0	3	KANSAS CITY	MO
100693810A	THE CHILDRENS MERCY HOSP	0	1	1	0	0	4	KANSAS CITY	MO
200055280A	SSM ST JOSEPH HOSPITAL OF KIRKWOOD	1	1	0	0	0	2	KIRKWOOD	MO
100693850A	FITZGIBBON HOSPITAL	0	0	0	1	0	2	MARSHALL	MO
200047370A	ST FRANCIS HOSPITAL	0	0	0	1	0	2	MOUNTAIN VIEW	MO
100712780F	FREEMAN NEOSHO HOSPITAL	0	1	0	0	0	4	NEOSHO	MO
100693590A	PERRY COUNTY MEMORIAL HOSP	0	0	0	0	1	3	PERRYVILLE	MO
100693750A	BOTHWELL REG HLTH CTR	0	0	0	1	0	2	SEDALIA	MO
100693760A	ST LUKE'S NORTHLAND HOSPIT	0	1	0	0	0	4	SMITHVILLE	MO
100693780A	L E COX MED CNTR	1	1	1	0	0	3	SPRINGFIELD	MO
100693740A	ST JOHNS REG HLT CTR	1	1	0	0	0	2	SPRINGFIELD	MO
100693290A	ST LOUIS CHILDRENS HOSP	0	1	1	0	0	4	ST LOUIS	MO
100693350A	CARDINAL GLENNON CHILDREN	1	1	1	0	0	3	ST LOUIS	MO
100690180A	BARNES-JEWISH HOSPITAL	1	1	1	0	0	3	ST LOUIS	MO
100693940A	OZARKS MED CTR	0	0	0	1	0	2	WEST PLAINS	MO
200056950A	BILOXI REGIONAL MEDICAL CENTER	0	1	0	0	0	4	BILOXI	MS
200026550A	BOLIVAR MEDICAL CENTER	0	0	0	0	0	1	CLEVELAND	MS

OHCA ID	Name	Big	Urban	Teach	Sole	CAH	Peer Group	City	State
100703700A	DEACONESS BILLINGS CLINIC	0	1	1	0	0	4	BILLINGS	MT
100703720A	BOZEMAN DEACONESS HOSPITAL	0	1	0	1	0	4	BOZEMAN	MT
100703760A	MARCUS DALY MEM HOSP	0	0	0	1	0	2	HAMILTON	MT
100850920A	ST PETERS HOSPITAL	0	0	0	1	0	2	HELANA	MT
200054270B	ST LUKE COMMUNITY HOSPITAL	0	0	0	0	1	3	RONAN	MT
100698030A	TRIDENT MEDICAL CTR	1	1	1	0	0	3	CHARLESTON	NC
100696230A	DUKE UNIVERSITY HEALTH SYSTEMS INC	1	1	1	0	0	3	DURHAM	NC
100693990A	ST ALEXIUS MED CTR	0	1	1	0	0	4	BISMARCK	ND
200041330B	SOUTHWEST HEALTHCARE SERVICES	0	0	0	0	1	3	BOWMAN	ND
200053950A	INNOVIS HEALTH	0	1	0	0	0	4	FARGO	ND
100694020A	ALTRU HEALTH SYSTEM	0	1	1	1	0	5	GRAND FORKS	ND
200050570C	TRINITY HOSPITAL	1	0	1	1	0	1	MINOT	ND
100694390A	NEMAHA COUNTY HOSPITAL	0	0	0	0	1	3	AUBURN	NE
100694350A	BEATRICE COMM HOSP	0	0	0	1	0	2	BEATRICE	NE
100694490A	FREMONT AREA MEDICAL CENTER	0	0	0	0	0	1	FREMONT	NE
100694520A	KIMBALL HEALTH SERVICES	0	0	0	0	1	3	KIMBALL	NE
100694360A	ST ELIZABETH COMM HLTH CTR	0	1	1	0	0	4	LINCOLN	NE
100694280B	BRYAN LGH MEDICAL CENTER EAST	1	1	1	0	0	3	LINCOLN	NE
100694290A	NEBRASKA METH HSP	1	1	1	0	0	3	OMAHA	NE
100703100A	SAINT JOSEPH HOSPITAL	0	1	1	0	0	4	OMAHA	NE
100694300A	IMMANUEL MEDICAL CENTER	1	1	1	0	0	3	OMAHA	NE
100705520A	NEBRASKA MEDICAL CENTER	1	1	1	0	0	3	OMAHA	NE
200039720A	ALEGENT HEALTH MIDLANDS COMM HOSP	0	1	0	0	0	4	PAPILLION	NE
200039380A	PLAINVIEW PUBLIC HOSPITAL	0	0	0	0	1	3	PLAINVIEW	NE
100704630A	GERALD CHAMPION MEM HSP	0	0	0	1	0	2	ALAMOGORDO	NM
100704600L	PRESBYTERIAN HOSPITAL	1	1	1	0	0	3	ALBUQUERQUE	NM
100704770A	UNIVERSITY OF NEW MEXICO	0	0	0	0	1	3	ALBUQUERQUE	NM
100704740B	UNION COUNTY GEN HOSP	0	0	0	0	1	3	CLAYTON	NM
100704600I	PLAINS REGIONAL MEDICAL CT	0	0	0	0	0	1	CLOVIS	NM
200016690A	MIMBRES MEMORIAL HOSPITAL	0	0	0	1	0	2	DEMING	NM
100704680A	REHOBOTH MCKINLEY CHRISTIAN HEALTH CARE	0	0	0	1	0	2	GALLUP	NM
100704640B	CIBOLA GENERAL HOSP	0	0	0	1	0	2	GRANTS	NM
100701720A	EASTERN NEW MEXICO MED CTR	0	0	1	1	0	2	ROSWELL	NM
100704660A	HOLY CROSS HOSP	0	0	0	1	0	2	TAOS	NM
200000210A	NORTHEASTERN NEVADA REG HOSP	0	0	0	1	0	2	ELKO	NV
200007550A	MT GRANT BENERAL HOSPITAL	0	0	0	0	1	3	HAWTHORNE	NV
200052600A	SUMMERLIN HOSPITAL MEDICAL CENTER LLC	0	1	0	0	0	4	LAS VEGAS	NV
100690010A	VALLEY HOSPITAL MEDICAL CENTER	1	1	0	0	0	2	LAS VEGAS	NV
100690000A	DESERT SPRINGS HOSPITAL	1	1	0	0	0	2	LAS VEGAS	NV
100705250A	UNIV MED CTR OF S NV	1	1	1	0	0	3	LAS VEGAS	NV
200051340A	NORTH VISTA HOSPITAL INC	0	1	0	0	0	4	NORTH LAS VEGAS	NV
200023230A	NYE REGIONAL MEDICAL CENTER	0	1	0	1	0	4	TONOPAH	NV

OHCA ID	Name	Big	Urban	Teach	Sole	CAH	Peer Group	City	State
100705240A	HUMBOLDT GENERAL HOSPITAL	0	0	0	1	0	2	WINNEMUCCA	NV
200055930A	UNITED HEALTH SERVICES HOSPITAL	1	1	1	0	0	3	BINGHAMTON	NY
200009710A	MEDINA MEMORIAL HEALTH CARE SYSTEM	0	1	0	0	0	4	MEDINA	NY
200039320A	UNIVERSITY OF ROCHESTER STRONG MEM HOSPITAL	1	1	1	0	0	3	ROCHESTER	NY
100690940A	BARBERTON CITIZENS HOSPITAL	0	1	1	0	0	4	BARBERTON	OH
100690580A	CHILDRENS HOSPITAL MEDICAL CENTER	1	1	1	0	0	3	CINCINNATI	OH
200017190A	UNIVERSITY OF KENTUCKY HOSPITAL	1	1	1	0	0	3	CLEVELAND	OH
200029600A	DOCTORS HOSPITAL	0	1	1	0	0	4	COLUMBUS	OH
100690480A	MIAMI VALLEY HOSP	1	1	1	0	0	3	DAYTON	OH
100850880A	HENRY CO HOSPITAL	0	0	0	0	1	3	NAPALEON	OH
100728840B	VALLEY VIEW REG HOSP	0	0	0	1	0	2	ADA	OK
100699350A	JACKSON CO MEM HSP	0	0	0	1	0	2	ALTUS	OK
100699830A	SHARE MEM HSP	0	0	0	1	0	2	ALVA	OK
100699780A	PHYSICIANS HOSPITAL IN ANADARKO	0	0	0	0	1	3	ANADARKO	OK
100700770A	PUSHMATAHA HSP	0	0	0	0	0	1	ANTLERS	OK
100262320C	MERCY MEMORIAL HEALTH CTR	0	0	0	1	0	2	ARDMORE	OK
100262850D	ATOKA MEMORIAL HOSPITAL	0	0	0	0	1	3	ATOKA	OK
100699490A	JANE PHILLIPS EP HSP	0	0	1	0	1	4	BARTLESVILLE	OK
200030240A	CONTINUOUS CARE CTR OF BARTLESVILLE	0	0	0	0	0	1	BARTLESVILLE	OK
100700760A	BEAVER CO MEM HSP	0	0	0	0	1	3	BEAVER	OK
100700340A	BLACKWELL REG HOSP	0	0	0	0	0	1	BLACKWELL	OK
100700740A	CIMARRON MEMORIAL HOSPITAL	0	0	0	0	1	3	BOISE CITY	OK
200044170A	BRISTOW MEDICAL CENTER	0	1	0	0	0	4	BRISTOW	OK
100700060A	BRISTOW MEM HSP	0	1	0	0	0	4	BRISTOW	OK
100699930A	BROKEN ARROW MED CTR	0	1	0	0	0	4	BROKEN ARROW	OK
100699660A	HARPER CO COM HSP	0	0	0	0	1	3	BUFFALO	OK
100699690A	CARNEGIE TRI-COUNTY MUNICI	0	0	0	1	0	2	CARNEGIE	OK
100699820A	ROGER MILLS MEM HSP	0	0	0	0	1	3	CHEYENNE	OK
100700820A	GRADY MEM HSP	0	0	0	1	0	2	CHICKASHA	OK
100706720B	CLAREMORE REG HOSP	0	1	0	0	0	4	CLAREMORE	OK
100726280B	CLAREMORE REGIONAL HOSPIT	0	1	0	0	0	4	CLAREMORE	OK
100690900A	CLEVELAND CLINIC HOSPITAL	1	1	1	0	0	3	CLEVELAND	OK
100700150A	CLEVELAND AREA HOSP	0	0	0	0	1	3	CLEVELAND	OK
100700010A	INTEGRIS CLINTON REGIONAL HSP	0	0	0	0	0	1	CLINTON	OK
100699470A	MARY HURLEY HSP	0	0	0	0	1	3	COALGATE	OK
100774650D	COAL COUNTY GENERAL HOSPITAL INC	0	0	0	0	1	3	COALGATE	OK
100819200B	CORDELL MEMORIAL HOSPITAL	0	0	0	0	1	3	CORDELL	OK
200044190A	CUSHING REGIONAL HOSPITAL	0	0	0	0	0	1	CUSHING	OK
100700310A	CUSHING REG HOSP	0	0	0	0	0	1	CUSHING	OK
200056210A	DRUMRIGHT REGIONAL HOSPITAL	0	0	0	0	1	3	DRUMRIGHT	OK
100700120A	DUNCAN REGIONAL HOSP	0	0	0	1	0	2	DUNCAN	OK
100696610B	MED CTR OF SE OKLA	0	0	1	0	0	2	DURANT	OK

OHCA ID	Name	Big	Urban	Teach	Sole	CAH	Peer Group	City	State
100689950A	RENAISSANCE WOMEN'S CTR OF	0	1	0	0	0	4	EDMOND	OK
100697940A	EDMOND MEDICAL CENTER	0	1	0	0	0	4	EDMOND	OK
100689650A	EDMOND REG MED CTR	0	1	0	0	0	4	EDMOND	OK
100689210A	EDMOND MEM HOSP	0	1	0	0	0	4	EDMOND	OK
200023150A	EDMOND SPECIALTY HOSPITAL	0	1	0	0	0	4	EDMOND	OK
100700930A	PARK VIEW HOSPITAL	0	1	0	0	0	4	EL RENO	OK
100699410A	GREAT PLAINS REG MED CENT	0	0	0	0	0	1	ELK CITY	OK
100699500A	INTEGRIS BASS MEM BAP	0	1	1	0	0	4	ENID	OK
100690020A	ST MARY'S REGIONAL CTR	0	1	1	0	0	4	ENID	OK
100726080B	COMMUNITY HOSP LAKEVIEW	0	0	0	0	0	1	EUFULA	OK
100700710A	FAIRFAX MEMORIAL HOSPITAL	0	0	0	0	1	3	FAIRFAX	OK
100700800A	FAIRVIEW HSP	0	0	0	0	1	3	FAIRVIEW	OK
100700940A	MEMORIAL HOSPITAL & PHYSICIAN GROUP	0	0	0	1	0	2	FREDERICK	OK
100699700A	GROVE GENERAL HOSPITAL	0	0	0	1	0	2	GROVE	OK
100700110A	LOGAN HOSPITAL & MED CTR	0	1	0	0	1	5	GUTHRIE	OK
100699630A	MEMORIAL HOSPITAL	0	0	0	1	0	2	GUYMON	OK
100748330C	HEALDTON MUNICIPAL HOSP	0	0	0	0	1	3	HEALDTON	OK
100700220A	HENRYETTA MED CNTR	0	0	0	0	0	1	HENRYETTA	OK
200045700C	HENRYETTA MEDICAL CENTER	0	0	0	0	0	1	HENRYETTA	OK
100700880A	ELKVIEW GEN HSP	0	0	0	0	0	1	HOBART	OK
100699880A	HOLDENVILLE GEN HSP	0	0	0	0	1	3	HOLDENVILLE	OK
100700780B	HARMON MEM HSP	0	0	0	1	0	2	HOLLIS	OK
200000430A	DESTINY FUTUREQUEST INC	0	0	0	0	0	1	HUGO	OK
100700720A	CHOCTAW MEMORIAL HOSPITAL	0	0	0	0	0	1	HUGO	OK
100700920A	MCCURTAIN MEM HSP	0	0	0	1	0	2	IDABEL	OK
100699510A	KINGFISHER REG HOSP	0	0	0	0	1	3	KINGFISHER	OK
100697950B	SOUTHWESTERN MEDICAL CENT	0	1	0	0	0	4	LAWTON	OK
100706720C	NOTAMI HOSPITALS OF OKLAHO	0	1	0	0	0	4	LAWTON	OK
100700750A	COMANCHE CO MEM HSP	1	1	1	0	0	3	LAWTON	OK
100818200B	LINDSAY MUN HOSP	0	0	0	0	0	1	LINDSAY	OK
100700440A	INTEGRIS MARSHALL MEM HOSP	0	0	0	0	1	3	MADILL	OK
100699750A	MANGUM CITY HOSPITAL	0	0	0	0	1	3	MANGUM	OK
100699960A	MERCY HEALTH LOVE COUNTY	0	0	0	0	1	3	MARIETTA	OK
100700070A	MCALESTER REGIONAL	0	0	0	1	0	2	MCALESTER	OK
100699440A	BAPTIST REGIONAL HEALTH CE	0	0	0	1	0	2	MIAMI	OK
100724700B	SPECIALTY HOSPITAL OF MIDWEST CITY	0	1	0	0	0	4	MIDWEST CITY	OK
100700490A	MIDWEST CITY REGIONAL HOSP	0	1	1	0	0	4	MIDWEST CITY	OK
100700630A	MUSKOGEE REGIONAL MED CTR	0	0	0	0	0	1	MUSKOGEE	OK
100700690A	NORMAN REG HSP	1	1	0	0	0	2	NORMAN	OK
100700670A	J D MCCARTY C P CTR	0	1	0	0	0	4	NORMAN	OK
100700460A	JANE PHILLIPS NOWATA	0	0	0	0	1	3	NOWATA	OK
100700250A	OKEENE MUN HSP	0	0	0	0	1	3	OKEENE	OK
100699980A	CREEK NATION COM HSP-NI	0	0	0	0	0	1	OKEMAH	OK
100699540O	SSM HEALTH CARE OF OKLA	0	1	1	0	0	4	OKLAHOMA CITY	OK

OHCA ID	Name	Big	Urban	Teach	Sole	CAH	Peer Group	City	State
100699390A	MERCY HEALTH CENTER	1	1	0	0	0	2	OKLAHOMA CITY	OK
100699370A	DEACONESS HSP	0	1	1	0	0	4	OKLAHOMA CITY	OK
100699530A	ST MICHAEL HOSP INC	0	1	1	0	0	4	OKLAHOMA CITY	OK
100699540A	ST ANTHONY HSP	1	1	1	0	0	3	OKLAHOMA CITY	OK
100699540I	ST ANTHONY HOSPITAL	0	1	0	0	0	4	OKLAHOMA CITY	OK
100698210A	HEALTHSOUTH REHAB HOSP	0	1	0	0	0	4	OKLAHOMA CITY	OK
100677110F	THE CHILDRENS CENTER INC	0	1	0	0	0	4	OKLAHOMA CITY	OK
100693560A	SELECT SPECIALTY HSP LA	0	1	0	0	0	4	OKLAHOMA CITY	OK
100695720A	KINDRED HOSPITAL EAST LLC	0	1	0	0	0	4	OKLAHOMA CITY	OK
100689210U	MEDICAL CENTER HOSPITALS	1	1	1	0	0	3	OKLAHOMA CITY	OK
100689130A	UNIVERSITY HOSPITAL AUTHOR	1	1	1	0	0	3	OKLAHOMA CITY	OK
100689350A	SELECT SPECIALTY HOSPITAL	0	1	0	0	0	4	OKLAHOMA CITY	OK
100706820A	UNIVERSITY HOSP AUTHORITY	1	1	1	0	0	3	OKLAHOMA CITY	OK
100806400C	INTEGRIS BAPTIST MEDICAL C	1	1	1	0	0	3	OKLAHOMA CITY	OK
200028650A	VALIR REHABILITATION HOSPITAL OF OKC	0	1	0	0	0	4	OKLAHOMA CITY	OK
100745350B	LAKESIDE WOMENS CENTER OF	0	1	0	0	0	4	OKLAHOMA CITY	OK
200009170A	OKLAHOMA HEART HOSPITAL LLC	0	1	0	0	0	4	OKLAHOMA CITY	OK
100700420A	NORTHWEST SURGICAL HOSPITA	0	1	0	0	0	4	OKLAHOMA CITY	OK
100700200A	INTEGRIS SOUTHWEST MEDICAL	0	1	1	0	0	4	OKLAHOMA CITY	OK
100700530A	SURGICAL HOSPITAL OF OKLAH	0	1	1	0	0	4	OKLAHOMA CITY	OK
100700520A	PHYSICIANS HOSPITAL OF OK	0	1	0	0	0	4	OKLAHOMA CITY	OK
100693650A	GEORGE NIGH REHAB INST VA	0	0	0	0	0	1	OKMULGEE	OK
100700360A	OKMULGEE MEMORIAL HSP	0	0	0	0	0	1	OKMULGEE	OK
100699890A	PAULS VALLEY GEN HSP	0	0	0	1	0	2	PAULS VALLEY	OK
100690120A	PAWHUSKA HSP INC	0	0	0	0	1	3	PAWHUSKA	OK
100260190B	PAWNEE MUNICIPAL HSP	0	0	0	0	0	1	PAWNEE	OK
200060390B	PAWNEE MUNICIPAL HOSPITAL	0	0	0	0	0	1	PAWNEE	OK
100700900A	PERRY MEM HSP AUTH	0	0	0	1	0	2	PERRY	OK
100699420A	VIA CHRISTI	0	0	0	0	0	1	PONCA CITY	OK
100700730A	EASTERN OKLAHOMA MEDICAL CENTER	0	0	0	1	0	2	POTEAU	OK
100700510F	EASTERN OK MEDICAL CENTER	0	0	0	1	0	2	POTEAU	OK
100699770A	PRAGUE MUNICIPAL HSP	0	0	0	0	1	3	PRAGUE	OK
100819960B	PRAGUE MUNICIPAL HOSPITAL	0	0	0	0	1	3	PRAGUE	OK
100700040A	MAYES COUNTY MEDICAL CENTE	0	0	0	0	0	1	PRYOR	OK
100699900A	PURCELL MUN HSP	0	1	0	0	0	4	PURCELL	OK
100700190A	SEQUOYAH MEM HSP	0	1	0	0	0	4	SALLISAW	OK
100699550A	ST JOHN SAPULPA INC	0	1	0	0	1	5	SAPULPA	OK
100700160A	SAYRE MEMORIAL HOSPITAL	0	0	0	0	0	1	SAYRE	OK
100700450A	SEILING MUNICIPAL HOSPITAL	0	0	0	0	1	3	SEILING	OK
100726260B	SEMINOLE MEDICAL CTR LLC	0	0	0	0	0	1	SEMINOLE	OK
100699360A	NEWMAN MEMORIAL HSP	0	0	0	1	0	2	SHATTUCK	OK
100740840B	COMMUNITY HEALTH PARTNERS,	0	1	0	0	0	4	SHAWNEE	OK
100700850A	HASKELL COUNTY HOSPITAL	0	0	0	1	0	2	STIGLER	OK
100699950A	STILLWATER MEDICAL CENTER	0	0	0	1	0	2	STILLWATER	OK

OHCA ID	Name	Big	Urban	Teach	Sole	CAH	Peer Group	City	State
100700030A	ADAIR COUNTY HC INC	0	0	0	1	0	2	STILWELL	OK
200006460A	STROUD REGIONAL MEDICAL CENTER	0	0	0	0	1	3	STROUD	OK
100700080A	STROUD REGIONAL MED	0	0	0	0	1	3	STROUD	OK
100700790A	ARBUCKLE MEM HSP	0	0	0	0	1	3	SULPHUR	OK
100700680A	TAHLEQUAH CITY HSP	0	0	0	1	0	2	TAHLEQUAH	OK
100700840A	JOHNSTON MEMORIAL HOSPITAL	0	0	0	0	1	3	TISHOMINGO	OK
200039650A	JOHNSTON MEMORIAL HOSPITAL	0	0	0	0	1	3	TISHOMINGO	OK
100699400A	ST JOHN MED CTR	1	1	1	0	0	3	TULSA	OK
100699380D	CHILDRENS MED CENTER	1	1	1	0	0	3	TULSA	OK
100699380A	HILLCREST MED CNTR	1	1	1	0	0	3	TULSA	OK
100699570A	ST FRANCIS HOSPITAL	1	1	1	0	0	3	TULSA	OK
100697900A	SOUTHCREST HOSPITAL	0	1	0	0	0	4	TULSA	OK
100690390A	MEADOWBROOK SPECIALTY HOSPITAL OF TULSA LLC	0	1	0	0	0	4	TULSA	OK
200048610A	TULSA REGIONAL MEDICAL CENTER	1	1	1	0	0	3	TULSA	OK
200044210A	HILLCREST MEDICAL CENTER	1	1	1	0	0	3	TULSA	OK
200031310A	SAINT FRANCIS HEART HOSPITAL	0	1	0	0	0	4	TULSA	OK
100706720A	OSTEOPATHIC HOSPITAL FOUND	1	1	1	0	0	3	TULSA	OK
200006260A	TULSA SPINE HOSPITAL	0	1	0	0	0	4	TULSA	OK
100748450B	ORTHOPEDIC HOSPITAL OF OKLAHOMA	0	1	0	0	0	4	TULSA	OK
100700580A	ORTHOPEDIC HOSPITAL OF OK	0	1	0	0	0	4	TULSA	OK
100700560A	TULSA REGIONAL MED CTR	1	1	1	0	0	3	TULSA	OK
100700500A	CONTINUOUS CARE CENTERS	0	1	0	0	0	4	TULSA	OK
100261400B	CRAIG GENERAL HOSPITAL	0	0	0	1	0	2	VINITA	OK
100747940B	WAGONER COMM HOSP	0	1	0	0	0	4	WAGONER	OK
100700210A	WATONGA HOSPITAL TRUST AUT	0	0	0	0	1	3	WATONGA	OK
100699990A	JEFFERSON CO HSP	0	0	0	0	1	3	WAURIKA	OK
100699870E	WEATHERFORD HOSPITAL AUTHORITY	0	0	0	0	1	3	WEATHERFORD	OK
100699870A	WEATHERFORD HOSPITAL AUTH	0	0	0	0	1	3	WEATHERFORD	OK
100690040A	WETUMKA GENERAL HOSPITAL	0	0	0	0	1	3	WETUMKA	OK
100700860A	LATIMER CO GEN HSP	0	0	0	0	0	1	WILBURTON	OK
100699460A	WOODWARD HOSPITAL & HEALTH	0	0	0	1	0	2	WOODWARD	OK
200019120A	WOODWARD REGIONAL HOSPITAL	0	0	0	1	0	2	WOODWARD	OK
100700610A	INTEGRIS RURAL HLTH INC	0	1	0	0	0	4	YUKON	OK
200052390A	COLUMBIA MEMORIAL HOSPITAL	0	0	0	1	0	2	ASTORIA	OR
100705790A	ST CHARLES MED CTR	0	0	1	0	0	2	BEND	OR
200020080A	GRANDE RONDE HOSPITAL	0	0	0	1	0	2	LAGRANDE	OR
200022440A	OREGON HEALTH & SCIENCE UNIVERSITY	1	1	1	0	0	3	PORTLAND	OR
100705710A	ADVENTIST MEDICAL CENTER	1	1	0	0	0	2	PORTLAND	OR
100705620A	GOOD SAMARITAN HOSPITAL &	0	1	0	0	0	4	PORTLAND	OR
100705630A	EMANUEL HOSP & HEALTH CTR	1	1	1	0	0	3	PORTLAND	OR
200013460A	CHAMBERSBURG HOSPITAL	0	0	1	0	0	2	CHAMBERSBURG	PA
200058960A	EPHRATA COMMUNITY HOSPITAL	0	1	0	0	0	4	EPHRATA	PA
200037380A	MILTON S HERSHEY MEDICAL CTR	1	1	1	0	0	3	HERSHEY	PA

OHCA ID	Name	Big	Urban	Teach	Sole	CAH	Peer Group	City	State
100689870A	POTTSTOWN MEM MEDI CTR	0	1	0	0	0	4	POTTSTOWN	PA
200011070A	MEDICAL UNIVERSITY HOSPITAL AUTHORITY	1	1	1	0	0	3	CHARLESTON	SC
200011400A	GRAND STRAND REG MED CTR	0	1	0	0	0	4	MYRTLE BEACH,	SC
200028250A	PIEDMONT MEDICAL CENTER	1	1	0	0	0	2	ROCK HILL	SC
100694220A	BROOKINGS HOSPITAL	0	0	0	1	0	2	BROOKINGS	SD
100694180A	MID-DAKOTA HOSP	0	0	0	0	1	3	CHAMBERLAIN	SD
100694070A	AVERA QUEEN OF PEACE HOSPITAL	0	0	0	1	0	2	MITCHELL	SD
100694160A	RAPID CITY REGIONAL HSP	1	1	1	0	0	3	RAPID CITY	SD
100694080A	AVERA MCKENNAN HOSPITAL	1	1	1	0	0	3	SIOUX FALLS	SD
100694190A	STURGIS COMMUNITY HEALTH CARE CTR	0	0	0	0	1	3	STURGIS	SD
200014150A	LAKE AREA HOSPITAL	0	0	0	0	1	3	WEBSTER	SD
200027800A	HORIZON MEDICAL CENTER	0	1	0	0	0	4	DICKSON	TN
100698150A	JACKSON-MADISON COUNTY	1	1	1	0	0	3	JACKSON	TN
200036800A	GRANDVIEW MEDICAL CENTER	0	1	0	0	0	4	JASPER	TN
200058020A	UNIVERSITY OF TENNESSEE MEMORIAL HOSPITAL	1	1	1	0	0	3	KNOXVILLE	TN
100697530A	TENN CHRISTIAN MED CTR	0	1	0	0	0	4	MADISON	TN
100697520A	ST JUDE CHILDREN'S RESEARC	0	0	0	0	1	3	MEMPHIS	TN
100697460A	METHODIST HEALTHCARE MEMPH	1	1	1	0	0	3	MEMPHIS	TN
100697450A	VANDERBILT UNIV HOSPITAL	1	1	1	0	0	3	NASHVILLE	TN
100697600C	CENTENNIAL MEDICAL CENTER	1	1	0	0	0	2	NASHVILLE	TN
100697760A	HTI MEMORIAL HSP CORP	0	1	0	0	0	4	NASHVILLE	TN
200031950A	NORTHCREST MEDICAL CENTER	0	1	0	0	0	4	SPRINGFIELD	TN
100702050A	HENDRICK MED CTR	1	1	1	0	0	3	ABILENE	TX
100689910A	NORTHWEST TEXAS HOSPITAL	1	1	1	0	0	3	AMARILLO	TX
100701970A	BAPTIST/ST ANTHONY HLTH SY	1	1	1	0	0	3	AMARILLO	TX
100702690A	PERMIAN GENERAL HOSPITAL	0	0	0	1	0	2	ANDREWS	TX
200041950A	MEDICAL CENTER OF ARLINGTON	0	1	0	0	0	4	ARLINGTON	TX
100700970A	SETON MED CTR	1	1	1	0	0	3	AUSTIN	TX
100703090A	SCENIC MOUNTAIN MEDICAL	0	0	0	0	0	1	BIG SPRING	TX
100702260A	BOWIE MEMORIAL HSP	0	0	0	0	0	1	BOWIE	TX
200041500A	BROWNWOOD REG MED CTR	0	0	0	1	0	2	BROWNWOOD	TX
100702270A	CHILDRESS REGIONAL MED CTR	0	0	1	1	0	2	CHILDRESS	TX
100703110A	EAST TEXAS MEDICAL CTR	0	0	0	0	0	1	CLARKSVILLE	TX
100703450A	PARKLAND MEMORIAL HOSPITAL	1	1	1	0	0	3	DALLAS	TX
100702560A	BAYLOR CENTER FOR RESTORAT	0	1	0	0	0	4	DALLAS	TX
100701950A	CHILDRENS MED CNTR	1	1	1	0	0	3	DALLAS	TX
100701960A	METHODIST MEDICAL CTR	1	1	1	0	0	3	DALLAS	TX
100697860A	MEDICAL CITY DALLAS HOSPITAL	1	1	1	0	0	3	DALLAS	TX
100702650A	ZALE LIPSHY UNIV HOSP	0	1	1	0	0	4	DALLAS	TX
100702580B	BAYLOR UNIV MED CTR	1	1	1	0	0	3	DALLAS	TX
100702300A	DECATUR COMM HOSP DBA WISE	0	0	0	1	0	2	DECATUR	TX
100702760A	TEXOMA MEDICAL CENTER HOME HEALTH	0	1	0	0	0	4	DENISON	TX
200014270A	TEXOMA MEDICAL CENTER	0	1	0	0	0	4	DENISON	TX

OHCA ID	Name	Big	Urban	Teach	Sole	CAH	Peer Group	City	State
100706730A	COLUMBIA MEDICAL CENTER OF	0	1	0	0	0	4	DENTON	TX
200006810A	FORT DUNCAN MEDICAL CENTER	0	0	0	1	0	2	EAGLE PASS	TX
100701490A	DEL SOL MEDICAL CENTER	1	1	0	0	0	2	EL PASO	TX
100701490B	LAS PALMAS MEDICAL CENTER	1	1	0	0	0	2	EL PASO	TX
100701770A	R E THOMASON GENERAL HOSP	1	1	1	0	0	3	EL PASO	TX
100703510A	ELECTRA MEMORIAL HOSPITAL	0	1	0	0	1	5	ELECTRA	TX
100690130A	HUGULEY MEM MED CTR	0	1	0	0	0	4	FORT WORTH	TX
100703270A	HARRIS METHODIST FT WORTH	1	1	1	0	0	3	FORT WORTH	TX
100702730A	COOK FORT WORTH CHILD MC	0	1	1	0	0	4	FORT WORTH	TX
200060080A	PLAZA MEDICAL CENTER FORT WORTH	0	1	1	0	0	4	FT WORTH	TX
100702200A	NORTH TEXAS MEDICAL CENTER	0	0	0	1	0	2	GAINESVILLE	TX
100702170B	BAYLOR MEDICAL CENTER AT GARLAND	0	1	1	0	0	4	GARLAND	TX
200043710A	BAYLOR MEDICAL CENTER AT GRAPEVINE	0	1	0	0	0	4	GRAPEVINE	TX
100703220A	CLAY CO MEM HOSP	0	0	0	0	0	1	HENRIETTA	TX
100701440A	HILL REGIONAL HOSPITAL	0	0	0	0	0	1	HILLSBORO	TX
100700950A	TEXAS CHILDRENS HSP	1	1	1	0	0	3	HOUSTON	TX
100701050A	ST LUKES EPISCOPAL	1	1	1	0	0	3	HOUSTON	TX
200027170A	BAYLOR MEDICAL CENTER AT IRVING	0	1	0	0	0	4	IRVING	TX
200023570A	LAS COLINAS MEDICAL CENTER	0	1	0	0	0	4	IRVING	TX
100703460A	JACK COUNTY HOSP	0	0	0	0	1	3	JACKSBORO	TX
100701560A	SID PETERSON MEM HSP	0	0	0	1	0	2	KERRVILLE	TX
100701380A	METROPLEX HOSP	0	1	0	0	0	4	KILLEEN	TX
200052960A	MEDICAL ARTS HOSPITAL	0	0	0	1	0	2	LAMESA	TX
200030960A	LAREDO MEDICAL CENTER	0	1	0	0	0	4	LAREDO	TX
100689660A	MEDICAL CENTER OF LEWISVIL	0	1	0	0	0	4	LEWISVILLE	TX
200019900A	LONGVIEW MEDICAL CTR LP	0	1	0	0	0	4	LONGVIEW	TX
100820380B	LUBBOCK COUNTY HOSPITAL DI	0	1	1	0	0	4	LUBBOCK	TX
100703160A	COVENANT HEALTH SYSTEM	1	1	1	0	0	3	LUBBOCK	TX
100701930A	MEMORIAL MEDICAL CENTER OF EAST TX	0	0	0	0	0	1	LUFKIN	TX
200026520A	NORTH CENTRAL MEDICAL CENTER	0	1	0	0	0	4	MCKINNEY	TX
100692820A	MESQUITE COMMUNITY HOSPITAL	0	1	0	0	0	4	MESQUITE	TX
100695730A	MESQUITE COMM HSP	0	1	0	0	0	4	MESQUITE	TX
100698560A	DESERT SPRINGS MED CENTER	0	1	0	0	0	4	MIDLAND	TX
100703430A	TITUS COUNTY MEM HOSP	0	0	0	0	0	1	MOUNT PLEASANT	TX
100697870A	COLUMBIA NORTH HILLS HOSP	0	1	0	0	0	4	N RICHLAND HILL	TX
100703210A	NACOGDOCHES MEMORIAL HOSPITAL	0	0	0	0	0	1	NACOGDOCHES	TX
100702370A	NOCONA GEN HOSP	0	0	0	0	0	1	NOCONA	TX
100702880A	MEDICAL CENTER HOSPITAL	1	1	1	0	0	3	ODESSA	TX
200051040A	PALESTINE REG MED CTR	0	0	0	1	0	2	PALESTINE	TX
100701990L	PARIS REGIONAL MEDICAL CENTER	0	0	0	0	0	1	PARIS	TX
100701990A	CHRISTUS ST JOSEPH HEALTH	0	0	0	0	0	1	PARIS	TX
100702980A	COVENANT HOSPITAL PLAINVIEW	0	0	0	1	0	2	PLAINVIEW	TX

OHCA ID	Name	Big	Urban	Teach	Sole	CAH	Peer Group	City	State
200027750A	MEDICAL CENTER OF PLANO	1	1	0	0	0	2	PLANO	TX
100703300A	HARDEMAN COUNTY MEM HSP	0	0	0	0	0	1	QUANAH	TX
200051280A	SAN ANGELO COMMUNITY MEDICAL CENTER	0	1	0	0	0	4	SAN ANGELO	TX
200046720A	SOUTHWEST GENERAL HOSPITAL	0	1	0	0	0	4	SAN ANTONIO	TX
200032440B	NORTH CENTRAL BAPTIST HOSPITAL	0	1	0	0	0	4	SAN ANTONIO	TX
200032440A	NORTHEAST BAPTIST HOSPITAL	1	1	0	0	0	2	SAN ANTONIO	TX
100701810A	BEXAR COUNTY HOSP DIST	1	1	1	0	0	3	SAN ANTONIO	TX
100700980A	SANTA ROSA HLTH CARE CORP	0	1	1	0	0	4	SAN ANTONIO	TX
100701670A	METHODIST HOSPITAL	1	1	1	0	0	3	SAN ANTONIO	TX
100701670B	METHODIST SPECIALTY & TRANSPLANT HSP	0	1	1	0	0	4	SAN ANTONIO	TX
200056250A	GUADALUPE VALLEY HOSPITAL	0	1	0	0	0	4	SEGUIN	TX
100703420A	ROLLING PLAINS MEM HSP	0	0	0	1	0	2	SWEETWATER	TX
100702140A	WADLEY REGIONAL MED CENTER	0	1	1	0	0	4	TEXARKANA	TX
100698250A	HEALTHSOUTH REHAB HOSPITAL	0	1	0	0	0	4	TEXARKANA	TX
100703010C	CHRISTUS ST MICHAEL HEALTH	1	1	1	0	0	3	TEXARKANA	TX
100703010A	ST MICHAEL REHABILITATION	0	1	0	0	0	4	TEXARKANA	TX
200033270A	ST LUKES COMM MED CTR - THE WOODLANDS	0	1	0	0	0	4	THE WOODLANDS	TX
100701890A	TOMBALL REGIONAL HOSPITAL	0	1	0	0	0	4	TOMBALL	TX
100702020A	MOTHER FRANCES HOSP	1	1	1	0	0	3	TYLER	TX
100701200A	UVALDE MEMORIAL HOSPITAL	0	0	0	1	0	2	UVADLE	TX
100703480A	WILBARGER GEN HOSP	0	0	0	1	0	2	VERNON	TX
100700960A	PROVIDENCE HEALTH CTR	0	1	1	0	0	4	WACO	TX
100701060A	HILLCREST BAPT MED CTR	0	1	1	0	0	4	WACO	TX
200024960A	RED RIVER HOSPITAL	0	1	0	0	0	4	WICHITA FALLS	TX
200018070A	TEXAS SPECIALTY HOSPITAL AT WICHITA FALLS	0	1	0	0	0	4	WICHITA FALLS	TX
100703180A	WICHITA VALLEY REHAB	0	1	0	0	0	4	WICHITA FALLS	TX
100702600A	UNITED REGIONAL HEALTH CAR	1	1	1	0	0	3	WICHITA FALLS	TX
200050160A	PRESBYTERIAN HOSPITAL OF WINNSBORO	0	0	0	0	0	1	WINNSBORO	TX
100706200J	COTTONWOOD HOSPITAL	0	1	0	0	0	4	MURRAY	UT
100697970A	CASTLEVIEW HOSPITAL LLC	0	0	0	1	0	2	PRICE	UT
100706200F	UTAH VALLEY REGIONAL MEDICAL CENTER	1	1	1	0	0	3	PROVO	UT
100706200O	SEVIER VALLEY HOSPITAL	0	0	0	1	0	2	RICHFIELD	UT
100706200B	IHC HEALTH SERVICES INC DB	0	1	1	0	0	4	SALT LAKE CITY	UT
100706200N	LOGAN REG HOSP	0	1	0	1	0	4	SALT LAKE CITY	UT
100706200L	LDS HOSPITAL	1	1	1	0	0	3	SALT LAKE CITY	UT
100706200A	MCKAY-DEE HOSP CTR	0	1	1	0	0	4	SALT LAKE CITY	UT
100705160A	UNIVERSITY OF UTAH HOSP	1	1	1	0	0	3	SALT LAKE CITY	UT
100706200G	DIXIE MEDICAL CENTER	0	0	0	1	0	2	ST GEORGE	UT
100695840A	MARY WASHINGTON HOSPITAL	1	1	0	1	0	3	FREDERICKSBURG	VA
100695980D	SENTARA CAREPLEX HOSPITAL	0	1	0	0	0	4	HAMPTON	VA
200053550A	MEMORIAL HOSPITAL OF MARTINSVILLE AND HENRY	0	1	0	0	0	4	MARTINSVILLE	VA
200055700A	RIVERSIDE REGIONAL MEDICAL	1	1	1	0	0	3	NEWPORT NEWS	VA

OHCA ID	Name	Big	Urban	Teach	Sole	CAH	Peer Group	City	State
	CENTER								
200039890A	MARY IMMACULATE HOSPITAL	0	1	0	0	0	4	NEWPORT NEWS	VA
200041880A	BON SECOURS DEPAUL MEDICAL CENTER	0	1	1	0	0	4	NORFOLK	VA
100695980B	SENTARA NORFOLK GENERAL HO	1	1	1	0	0	3	NORFOLK	VA
100695980C	SENTARA LEIGH HOSPITAL	1	1	1	0	0	3	NORFOLK	VA
200041890A	MARY VIEW HOSPITAL	0	1	1	0	0	4	PORTSMOUTH	VA
200059500A	CARILION ROANOKE MEMORIAL HOSPITAL	1	1	1	0	0	3	ROANOKE	VA
100695980A	SENTARA BAYSIDE HSPTL	0	1	1	0	0	4	VIRGINIA BEACH	VA
100705340A	PROVIDENCE EVERETT MED CTR	1	1	0	0	0	2	EVERETT	WA
200051700A	MORTON GENERAL HOSPITAL	0	0	0	0	1	3	MORTON	WA
100705530A	VALLEY MEDICAL CENTER	1	1	1	0	0	3	RENTON	WA
100705560A	SOUTHWEST WASHINGTON MEDICAL CENTER	1	1	1	0	0	3	VANCOUVER	WA
100692430A	UNITED HOSPITAL SYSTEM INC	0	1	0	0	0	4	KENOSHA	WI
200050150A	MERITER HOSPITAL INC	1	1	1	0	0	3	MADISON	WI
100692380A	ST LUKES MEDICAL CENTER	1	1	1	0	0	3	MILWAUKEE	WI
200055020A	WEST ALLIS MEMORIAL HOSPITAL	0	1	1	0	0	4	WEST ALLIS	WI
100696050A	CHARLESTON AREA MEDICAL	1	1	1	0	0	3	CHARLESTON	WV
200040100A	UNITED HOSPITAL CTR INC	1	0	1	1	0	1	CLARKSBURG	WV
100690620A	FAIRMONT GENERAL HOSPITAL	0	0	0	0	0	1	FAIRMONT	WV
100703970A	JOHNSON CO MEM HOSP	0	0	0	0	1	3	BUFFALO	WY
100704050A	UNITED MEDICAL CENTER	0	1	1	1	0	5	CHEYENNE	WY
100703950A	CAMPBELL COUNTY MEMORIAL HOSPITAL	0	0	0	1	0	2	GILLETTE	WY
100698060A	LANDER VALLEY MED CTR	0	0	0	1	0	2	LANDER	WY
100704070A	MEMORIAL HOSPITAL OF SWEETWATER COUNTY	0	0	0	1	0	2	ROCK SPRINGS	WY
100704060A	MEMORIAL HOSP OF SHERIDAN	0	0	0	1	0	2	SHERIDAN	WY

Appendix 8 – Absolute Base Rate Calculation

Step 1. Average Payment per Discharge Calculation	
A = Projected Total Payment (Outlier Adjusted)	\$416,235,745
B = Projected Discharges	105,098
Projected Payment per Discharge = A/B	\$3,762

Peer-Group	A = Relative Base	B = Average Payment	Absolute Base = A x B
1	0.8694	\$3,762	\$3,271
2	0.9127	\$3,762	\$3,433
3	0.9604	\$3,762	\$3,613
4	1.0471	\$3,762	\$3,939
5	1.2104	\$3,762	\$4,554

Step 3. Budget-Neutral Adjustment to Base Rates		
Projected Total Payment	\$416,235,745	
Sum of Case Mix Adjusted Payments	\$388,090,267	
(over)/under Budget	\$28,145,477	
Percent (over)/under Budget	7.49%	
Base Adjustment Factor	1.0749	
Hospital Peer-Group	Approx. Base	Adjusted Base
1	\$3,271	\$3,516
2	\$3,433	\$3,691
3	\$3,613	\$3,884
4	\$3,939	\$4,235
5	\$4,554	\$4,895