

Annual Report

SFY 2022



OKLAHOMA
Health Care Authority

TABLE OF *Contents*

Letter From The CEO	3
Core Values	4
ABOUT SOONERCARE	5
+ Eligibility	6
MEDICAID EXPANSION	9
OPERATIONAL EXCELLENCE	11
+ SPARK	11
+ New Dental Benefits	12
+ Mobile Friendly	13
DIVISION MILESTONES	14
SPECIAL HONORS	16
+ NAGC	16
+ DEI	16
+ MATF Award	16
PARTNERSHIPS	17
FINANCE	18
LEGISLATIVE UPDATE	19
SERVANT LEADERSHIP	20
+ New State Medicaid Director Named	20
+ New Chief Operating Officer Named	20
+ Connect Committe	20
+ All-Star Award Winners	21
OHCA LEADERSHIP	22
AT A GLANCE	23



Letter from THE CEO

The Oklahoma Health Care Authority vision statement hangs prominently on the wall in our boardroom, where we often meet with large groups of agency staff and stakeholders. It is a constant reminder of our vision “for Oklahomans to be healthy and to have access to quality health care services regardless of their ability to pay.”

I can think of no better way we could live up to that vision than through the successful rollout of Medicaid expansion this past year. On June 30, 2020, Oklahoma voters directed the state to expand SoonerCare coverage to adults ages 19-64 whose income is 138% of the federal poverty level or lower. More than 300,000 adults have been enrolled in SoonerCare through this effort, with coverage beginning July 1, 2021.

That’s 300,000 Oklahomans who now have access to wellness visits, essential preventative health services and life-changing mental health care. It’s care they’ve been putting off because they couldn’t afford it.

Many of the people we serve never imagine themselves needing Medicaid. But life, as we all know, can be unpredictable. An unexpected job loss or a devastating health crisis can instantly change one’s life trajectory. If that happens, the team at OHCA is ready to help Oklahomans move forward.

“I never thought I would ever be so happy to have federal/state-funded health care,” one member told us recently. “But I am, and I thank you.”

That member isn’t alone. “Times have turned a bit for me, and I never expected to be treated so well,” another said, “Please keep up the great work because it truly does make a difference.”

Hearing messages like that is a powerful reminder of how we change lives daily. It’s a responsibility we take seriously. As we look toward a new delivery model that will improve the way we serve Oklahomans, we’re thinking about those lives — our newest 300,000 members — as well as the Oklahomans we have served for years.

Each of these lives drives us to innovate — to find new ways to help Oklahomans be healthier and need fewer treatments for preventable illnesses. This year, in addition to the nationally recognized expansion effort, we enhanced adult dental benefits and launched a new program to provide early targeted interventions for children in state’s custody.

These are just a few ways we strive to live out our vision at OHCA. There is more in the pages that follow, and still much more in the months and years to come, that will push our vision forward.

Onward,

A handwritten signature in black ink that reads "Kevin Corbett".

Kevin Corbett

Our Core VALUES



Our **Passion for Purpose** was seen in our entire agency's willingness and eagerness to do whatever it took to continue meeting the needs of our members and providers.

Empowerment and Accountability propelled our staff to embrace new responsibilities and overcome obstacles with confidence and competence.



Trust and Transparency were on full display as we adjusted policies through the pandemic, held public virtual meetings for providers and the community, and continued open communication with members and providers throughout this confusing and difficult time.

Our team was **Best in Class and Solution-oriented** as we adjusted to new normals and found ways to conquer challenges we had never faced.



Servant Leadership was shown throughout our staff as they donated enough blood to save 177 lives, gave \$21,320 to the State Charitable Campaign and formed a council to foster an environment where inclusion and diversity flourish in the workplace, and so much more.

About SOONERCARE

What is SoonerCare?

SoonerCare covers many health care services for our members in the most fiscally responsible way. There are limits in place to ensure only medically necessary services are provided, and, in some cases, particular benefits are for children only. There is no cost for those who meet the SoonerCare income guidelines; however, copays may apply to some services for adults. Mandatory services are required under federal law and are monitored by the Centers for Medicare & Medicaid Services (CMS). SoonerCare also offers several benefits that are not federally required to maintain or increase health and quality of life. For a full list of benefits, please visit [the OHCA website](#).



1,323,301

members enrolled through
SoonerCare and Insure Oklahoma

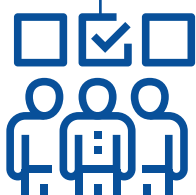
As of June 30, 2022

How is Medicaid Different from Medicare?

Both Medicaid and Medicare are government programs (with oversight by CMS) that help cover health care costs for millions of Americans, but there are some key differences.

1 in 3

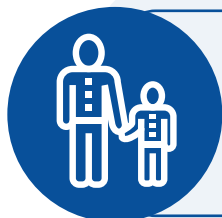
Oklahomans were covered
by SoonerCare



Medicare is a federal health insurance program and is essentially the same across the U.S. It provides coverage primarily to individuals 65 years or older, regardless of income, as well as some people with disabilities. In contrast, Medicaid is a federal-state program that assists low-income individuals of all ages with their health care needs. Those covered by Medicaid must meet eligibility requirements, and state and local governments administer their own Medicaid programs within federal guidelines. In addition, waivers give states flexibility to offer optional services, evaluate new methods for health care service delivery and more.

What is CHIP?

The Children's Health Insurance Program was signed into law in 1997. It provides federal matching funds to states to provide health coverage for children in families with incomes too high to qualify for Medicaid but who cannot afford private health coverage. Like Medicaid, CHIP is a federal-state program. It provides benefits to eligible children through both Medicaid and separate CHIP programs. In Oklahoma, CHIP is operated as part of SoonerCare.



707,480

children ages 0-20 were covered
by SoonerCare

What Coverage Programs are Offered?

The health care needs of Oklahomans are complex. SoonerCare offers various health benefit packages to accommodate our members in the most fiscally responsible way. Most individuals covered by SoonerCare receive health care benefits at no cost.

Adult members are responsible for copays, except for certain exempt eligibility groups and services. To be eligible for SoonerCare, an individual must first meet the description of a member eligibility group. OHCA administrative rules detail specific qualifications for each group.



12.7%
of members were aged,
blind or disabled and
accounted for

36.3%
of all expenditures

Member categories include:

- Children and parents who qualify for the Temporary Assistance for Needy Families (TANF) program.
- Children, parents and caretakers.
- Adults who qualify through Medicaid expansion.
- Aged, blind or disabled.
- Tax Equity and Fiscal Responsibility Act of 1982.
- SoonerPlan, a family planning program for individuals who are not enrolled in regular SoonerCare services.
- Breast and cervical cancer treatment program.
- Other, including Soon-to-be-Sooners (OHCA's unborn child program) and children who are currently or formerly in foster care.

SoonerCare Traditional

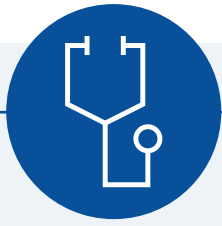
A comprehensive health care plan for members who do not qualify for SoonerCare Choice. SoonerCare Traditional members access services from contracted providers, whom OHCA pays on a fee-for-service basis.

SoonerCare Choice

A patient-centered medical home program. In this health care model, each member has a medical home where a primary care provider organizes their health care services.

SoonerCare Supplemental

A benefit plan for individuals enrolled in both Medicare and Medicaid (also known as dual eligibility). SoonerCare Supplemental pays both the Medicare co-insurance and deductible. It also provides medical benefits to supplemental services covered by Medicare.



72,959

providers administered care to
SoonerCare members

Note: Providers are counted multiple times
if they have multiple locations.

Long-Term Care

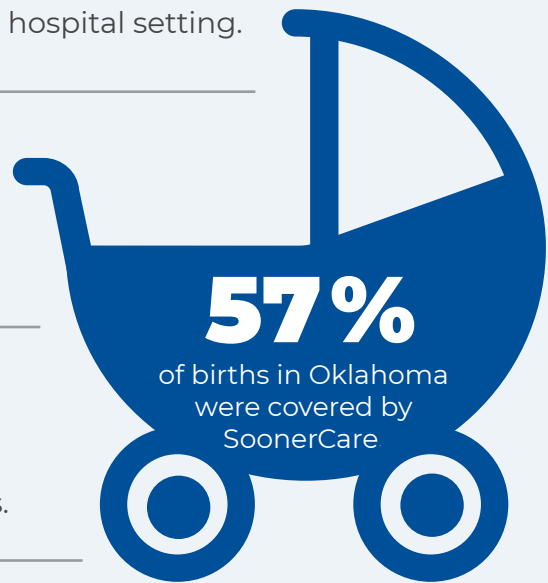
Offers additional benefits to certain members enrolled in SoonerCare Traditional or SoonerCare Supplemental plans. These benefits may include long-term care facility services, in-home personal care services, or home and community-based services. The home and community-based services benefit provides medical and other supportive services as alternatives to a member entering a nursing facility or hospital setting.

SoonerPlan

Covers limited services related to family planning. SoonerPlan members do not typically qualify for full SoonerCare benefits.

Soon-to-be-Sooners

A limited benefit plan that provides pregnancy-related medical services to women who do not qualify for full SoonerCare benefits.



3,232

businesses were enrolled in Insure
Oklahoma as of June 2022, and

14,040

individuals were covered during SFY
2022 through the individual plan and
employer-sponsored plans

Insure Oklahoma

Offers premium assistance to help Oklahoma businesses cover their qualified staff. Businesses must have 250 or fewer employees to qualify (no more than 500 employees for nonprofits). They must also be enrolled (or in the process of enrolling) in a qualified health plan. The state, the employer, and the employee share in the premium costs.

More than 300,000 Oklahomans are now covered
by SoonerCare through Medicaid expansion. We talked with
those staff members who helped get Oklahomans insured.
Here are their stories...



Applying to SoonerCare

Application for benefits can be made online through MySoonerCare.org, via phone through the SoonerCare helpline at 1-800-987-7767, or by submitting an application certified by CMS or OHCA's agency partner network. OHCA partners with other entities to conduct an extensive automated data search on the applicant before a SoonerCare application is approved. OHCA can then identify potential red flags before the application is completed and request follow-up documentation to verify eligibility.

Upon application submission, information is reviewed and validated in real time, including Social Security numbers, citizenship, residency status and addresses. The information entered on the application for benefits goes through an automated rules-based process to determine member eligibility.

For applications submitted from home or a partner agency, eligibility and enrollment is determined in real time and communicated to the member on the results screen and through case status letters. Applicants approved for benefits are given information that includes all programs for which they are eligible, the effective date, their member ID number, and any additional documentation they must supply and its due date. If they selected a patient-centered medical home, the provider's name and phone number are listed.

For each applicant not approved for benefits, an explanation of why they were not approved is provided. The member may request the letter be delivered via U.S. mail or email.

Ensuring Member Accuracy

Electronic checks are made with state and federal entities before a SoonerCare application is approved. Once an applicant is approved for SoonerCare, OHCA audits the member on a daily, weekly, monthly and quarterly basis to proactively prevent fraud and abuse. By working with other entities in real time, OHCA ensures eligible Oklahomans receive SoonerCare benefits.

Medicaid EXPANSION



On June 30, 2020, the Oklahoma Medicaid Expansion Initiative, State Question 802, passed by a majority vote to expand Medicaid eligibility to include adults ages 19-64 whose income is 138% of the federal poverty level or lower. The Oklahoma Health Care Authority partnered with the George Kaiser Family Foundation and local advertising agency Ghost to launch a 12-week statewide educational campaign with the goal of enrolling newly eligible Oklahomans in Medicaid.

Instead of featuring only professional actors, commercials featured real testimonials from SoonerCare members and fellow Oklahomans whenever possible. The initial campaign ran in 2021 from July through September with 183,137 Oklahomans successfully enrolled in Medicaid by September 30th. In early 2022, OHCA added an additional 5,578 members enrolled through continued outreach efforts.

By the end of the fiscal year, more than 300,000 Oklahomans successfully enrolled through Medicaid expansion. To hear how Medicaid expansion has impacted lives across Oklahoma, listen to Dee's testimonial.

Kenny's Story

Kenny worked as an actor prior to the COVID-19 pandemic. A few months into the pandemic, acting sets shut down causing Kenny to lose health insurance for his family and himself. He was forced to pay out of pocket for medical bills caused by his wife's hip replacement surgery which required physical therapy and medications.

"The cost was high for her medical care," said Kenny. "And my daughter has allergies, so we had to add her medications on top of it all. We went without a lot of things to be able to cover the costs of necessities."

A weight was lifted from Kenny's shoulders when he learned SoonerCare was expanding to cover more Oklahomans in situations like his own.

"It made a huge difference in our finances," said Kenny. "It felt amazing having peace of mind SoonerCare is there if you need it."

Now acting sets are re-opening meaning Kenny is back to work. He cancelled his SoonerCare coverage, so he could move back to his previous insurance. Kenny hopes his story helps someone in his community get the help they need – even if it's temporary.

"SoonerCare was a steppingstone for me," explained Kenny. "I hoped it would not be a forever thing but having that extra security helped me. I knew it was here if I needed it. If SoonerCare can help someone else get out of a hole, I highly encourage them to apply."



Operational EXCELLENCE



SPARK

OHCA and Oklahoma Human Services (OKDHS) are partnering to help Oklahoma children receive health services through the new Specialty Program for At-Risk Kids. The program offers care coordination for children in the custody of Child Welfare Services to ensure they have access to services at a time in their lives when early intervention is crucial.

Through the SPARK program, the two agencies aim to identify behavioral health and medical needs earlier and refer participants to interventions expected to divert youth from higher, more restrictive levels of care and promote placement stability.

OKDHS refers to children on SoonerCare who have been screened and identified as needing mental health treatments. A designated care coordinator with OHCA will work directly with the child's primary caretaker and their health providers to recommend and coordinate mental and physical health services covered by SoonerCare.

"Many times, the first experience families and caretakers of these children have with Oklahoma's behavioral health treatment system is when the child is in crisis and has an immediate need for crisis stabilization or inpatient treatment," State Medicaid Director Traylor Rains said. "By identifying behavioral health needs earlier in the child's life through screening and individualized care management, we can ensure services are available in the least restrictive environment possible and prevent the additional trauma that comes along with removing a child from their home to receive inpatient services."

SPARK care coordinators are licensed mental health professionals who find the best-suited resources to meet the child's needs, schedule appointments, coordinate between specialists and physicians, and monitor the child's progress. If a child's placement were to change while in the program, the coordinator will continue with the child's case while identifying resources in the child's new location.

Five care coordinators will handle a caseload of approximately 150 children each. Currently, OKDHS is responsible for 6,900 children in custody and provides post-adoption support to another 21,000. The SPARK team will focus on supporting those for whom coordination is a pressing need and, as stability is achieved, will shift to assist additional families.

"We are grateful for this partnership with OHCA and opportunities for earlier interventions that can positively change the trajectory for Oklahoma families who are facing challenging behavioral health needs," said Dr. Deborah Shropshire, director of Child Welfare Services at Oklahoma Human Services.

Additional Dental Benefits

OHCA now covers additional dental services for all adult SoonerCare members. Oklahoma joins at least 30 states that also offer these benefits. The adult limited dental benefit added the following benefits to the current medically necessary extraction benefit: preventive care, including cleanings, fluoride, and periodontal scaling; exams; X-rays; restorative care (fillings); and partial and full dentures.

"The ability to provide these benefits is crucial to improving oral health outcomes for SoonerCare members," Kevin Corbett, said. "The overall health, including oral health, of parents affects the health of children into adulthood. Improving oral health of caretakers can lead to a healthier, more productive society for future generations."

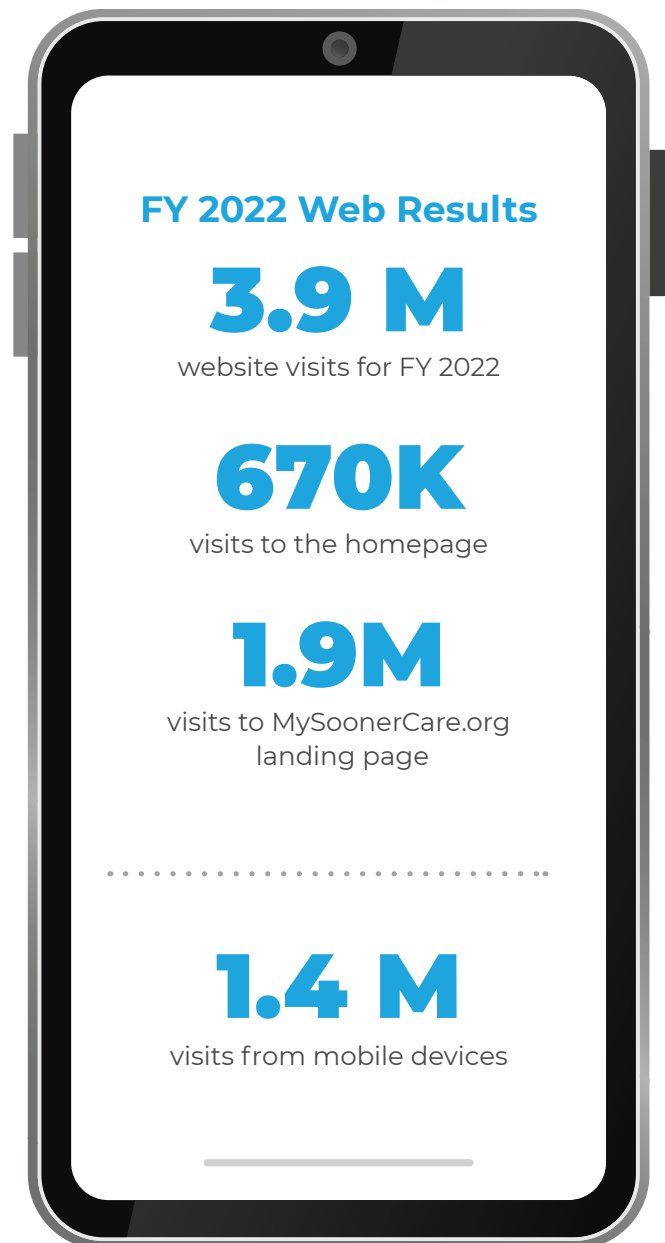
Preventive care will help maintain and preserve SoonerCare members' dental health as children and adolescents and prevent future disease and tooth loss. Restorative procedures will prevent more severe disease, which often results in avoidable dental pain and tooth loss.

Without available dental care, members must endure severe infection and pain, often resulting in costly emergency department visits. Severe dental pain and infection due to lack of dental benefits can affect a person's ability to work.

Mobile Friendly Website

OHCA now offers a mobile-friendly version of Oklahoma's Medicaid online enrollment portal. The secure website allows more Oklahomans to apply for and renew their SoonerCare benefits from their smartphones.

With this update, users who may not have access to traditional computers can fill out and submit their application from anywhere.



Agency MILESTONES

At the Oklahoma Health Care Authority, we are committed to being best in class. To us, this means responsibly using taxpayer dollars to achieve the biggest impact for Oklahomans on SoonerCare.

Below are a few achievements from SFY 2021 that we are especially proud of:

ENROLLMENT

- Enrolled more than 300,000 members in SoonerCare through Medicaid expansion
- Transitioned more than 29,000 members from Insure Oklahoma to SoonerCare through expansion
- Processed 79,263 Provided care management and coordination services to more than 11,000 SoonerCare Members
- Processed eligibility documents for SoonerCare and 35,199 for Insure Oklahoma
- Enrolled a record-breaking 718 individuals in PACE (Programs of All-Inclusive Care for the Elderly)

EXPERIENCE

- Completed more than 770,000 trips through SoonerRide
- Decreased approval time for patient-centered medical home applications from 21.6 days to 5.4 days
- Decreased TEFRA case turnaround time by 15%
- Sent four surveys to providers and healthcare systems to improve their experience working with SoonerCare

SERVICES

- Doubled the number of members who registered to quit tobacco
- Served nearly 17,000 members with chronic disease
- Provided care management services to an additional 800 members with chronic disease



The top three expenditures for SFY 2022 were

\$1.07 B

for prescribed drugs

\$869.3 M

for inpatient services

\$789.1 M

for physicians

- Supported a 112% increase in developmental disabilities service case determinations and a 32% increase for TEFRA (Tax Equity and Fiscal Responsibility Act of 1982) disability determinations

FINANCE

- Collected more than \$485.04 million in total drug rebates
- Awarded \$5 million to support HCBS (Home and Community-Based Services)
- Claimed more than \$2 million in family planning revenue through an enhanced match
- Implemented a temporary supplemental payment program for long-term care facilities to help cover the increased cost of operations due to the COVID-19 pandemic



\$5.6 M

was recovered as a result of provider audits, and

\$485 M

was recovered through drug rebates collected in SYF 2022

OUTREACH

- Added eight new tribal partners and hosted the first-ever tribal long-term services and supports conference at the First Americans Museum
- Worked with the Muscogee Nation, who won one of the largest grants in the country
- Offered care management services to an extra 2,450 members per month through our partnership with three health access networks



721,806

member calls were answered during SYF 2022.

GROWTH

- Implemented the Leadership Exploration and Development Program, providing leadership training for 50 agency managers.
- Awarded the Public Relations Society of America-OKC Chapter's Team of the Year in the government category

Special HONORS



The strategic communications team received the National Association of Government Communicator's Award of Excellence for the statewide Medicaid Expansion campaign. Running from July 1 to Sept. 30, the campaign utilized print, digital and traditional media to increase awareness about new eligibility guidelines. Ultimately, 183,137 members successfully enrolled through expansion during the campaign. This honor would not be possible without the agency's partnership with Ghost and George Kaiser Family Foundation.

The Blue Pencil & Gold Screen Awards are an annual international awards program that recognizes superior government communication products and those who produce them.

DEI

The DEI Champion Award, is a monthly award given to individuals who exemplify a commitment to promoting diversity, equity, and inclusion in the workplace through innovation, advocacy and awareness. In August 2022, Patrick McGinnis was the first recipient of the DEI Champion Award.



MATF AWARD

The Member Advisory Task Force (MATF) received the Family Voices Partnership Award recently in recognition of collaboration to improve healthcare services and policies for children. MATF's goal is improving the SoonerCare program by receiving input and feedback from members and their families.

Family Voices is a national organization and grassroots network of families and friends of children and youth with special health care needs and disabilities that promotes partnership with families—including those of cultural, linguistic and geographic diversity — in order to improve health care services and policies for children.

Partnerships

OTHER PARTNERS

Access to quality health care is bigger than one agency or organization. The hard work and dedication of the many private, public and nonprofit state and community-based organizations, and tribes across Oklahoma make it possible to provide information and resources to Oklahomans. From assisting with eligibility processing to providing direct care to Oklahomans in need, these partnerships are crucial.

- CENTERS FOR MEDICARE & MEDICAID SERVICES
- GOVERNOR'S OFFICE
- LEGISLATURE
- DEPARTMENT OF CORRECTIONS
- DEPARTMENT OF EDUCATION
- DEPARTMENT OF HEALTH
- DEPARTMENT OF HUMAN SERVICES
- DEPARTMENT OF MENTAL HEALTH AND SUBSTANCE ABUSE SERVICES
- OFFICE OF JUVENILE AFFAIRS
- INDIAN HEALTH SERVICES
- FEDERALLY QUALIFIED HEALTH CENTERS
- MEDICAL PROFESSIONAL ASSOCIATIONS
- OKLAHOMA COLLEGES, UNIVERSITIES AND RESEARCH INSTITUTES
- OKLAHOMA PARTNERSHIP FOR SCHOOL READINESS
- SOONERCARE PROVIDERS
- TULSA AND OKC COUNTY HEALTH DEPARTMENTS
- TOBACCO SETTLEMENT ENDOWMENT TRUST
- TRIBES AND TRIBAL LEADERSHIP
- GEORGE KAISER FAMILY FOUNDATION

Finance

FEDERAL MEDICAL ASSISTANCE PERCENTAGE

The FMAP helps the federal government determine its share of the cost of covered services in state Medicaid programs. The FMAP is not a static number. Its formula is based on the average per capita income of each state as compared to the national average, but an FMAP cannot be less than 50% by law. Because the FMAP is determined by federal fiscal year, two years are blended to calculate an accurate FMAP for the state fiscal year. Oklahoma's regular FMAP for SFY 2022 was 68.23%. For every \$1 the state spent on SoonerCare in SFY 2022, the federal government matched \$2.15 for a total of \$3.15. If including enhancements to the regular FMAP, the FMAP for SFY 2022 was 79.43%. For every \$1 the state spent on SoonerCare in SFY 2022, the federal government matched \$3.86 for a total of \$4.86.

BUDGET UPDATE

The state FY23 budget agreement was SB 1040 with OHCA's appropriations \$1,262,741,642; a 5.73% increase. This included OHCA's budget limits bill (SB 1074) which mandated various program maintenance and enhancements. The initial FY23 OHCA total budget was \$8,799,304,363; a 7.4% increase. The increases were driven mostly by a decrease in federal matching dollars and increases in enrollment, utilization and cost.



Legislative UPDATE

58TH LEGISLATIVE SESSION

In 2022, 2,332 bills were newly filed and 2,531 bills were carried over from last year's legislative session. In the 2022 session, 402 bills were signed, and 35 bills were vetoed.

The 58th legislative regular session resulted in 5,846 bills filed and 1,121 bills signed into law as of Sine Die on May 27, 2022.

OHCA BILLS

SB 1337 was signed into law. SB 1337 codifies the system design for a transformed Medicaid program, which prioritizes access and quality health outcomes for SoonerCare members and creates preferential scoring opportunities for Oklahoma provider-led entities to partner with OHCA as contracted entities under this new model. Under the law, contracted entities can include accountable care organizations, provider-led entities, commercial plans and/or dental benefit managers.



3.8%

of all expenditures were
for administration

SB 1467 – Requires OHCA to conduct an annual review of all medications and forms of treatment for sickle cell disease to determine if such treatments are adequately covered by Medicaid, with a report to the House and Senate.

SB 1369 – Creates the Office of the State Coordinator for Health Information Exchange within OHCA and requires health care entities to report data to said office.

SB 1396 – Makes several adjustments to the supplemental hospital offset payment program and OHCA's regulations regarding SHOPP.

SB 1661 – Establishes standards for nonstate government owned medical facilities within the Medicaid supplement program.

SB 1323 – Allows self-funded and self-insured health care plans which are recognized by the Insurance Department and meet certain standards to qualify under the Medicaid Premium Assistance Program.

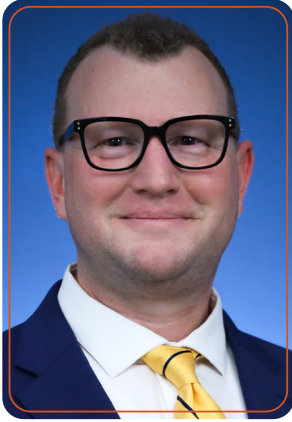
HB 2322 – Provides updates to Medicaid coverage to bring it in-line with the Ensuring Access to Medicaid Act.

BILLS OF INTEREST RELATED TO THE HEALTH CABINET

SB 709 – Provides the State Commissioner of Health serves at the pleasure of the Governor and is exempt from certain qualifications so long as they hold at least a master's degree and certain related experience.

SB 1134 – Repeals certain provisions limiting applications for Home and Community Based Medicaid Waiver Services to persons residing in Oklahoma for five-years or more.

Servant LEADERSHIP



NEW STATE MEDICAID DIRECTOR NAMED

OHCA named Traylor Rains as the agency's new State Medicaid Director in April 2022. Rains succeeds long-time State Medicaid Director and Chief Operating Officer, Melody Anthony, following the announcement of her retirement.

With more than 15 years of public service with the State of Oklahoma, Rains has served as Senior Director of Policy and Provider Regulation at the Department of Mental Health and Substance Abuse Services and Chief Operating Officer for the Department of Human Services. He most recently served as OHCA's Deputy State Medicaid Director. He is a graduate of Baylor University Law School.



NEW CHIEF OPERATING OFFICER NAMED

Brandon Keppner has joined the Oklahoma Health Care Authority as Chief Operating Officer.

Keppner focused much of his career on behavioral health and youth programs, including serving at the executive level at several psychiatric treatment facilities,

most recently as President of Laureate Psychiatric Clinic and Hospital in Tulsa.

CONNECT COMMITTEE

The Connect Committee helps to engage, empower and recognize OHCA employees. The committee organizes many volunteer, social and wellness opportunities year-round to support morale. Additionally, the committee fundraises for organizations that serve Oklahomans.

The committee also facilitates volunteer opportunities in the local community to help further support the people we serve. In SFY 2022, OHCA employees donated \$21,767 to the State Charitable Campaign, Pivot, Heartline, Oklahoma Project Woman and the American Lung Association through the Fight for Air Climb.

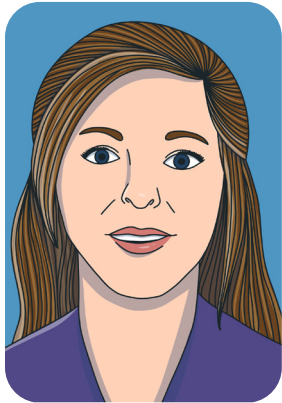


More than 430 employees enjoyed some time together outside of work at the Science Museum Oklahoma.

ALL-STAR AWARD

OHCA recognizes excellence and innovation through the monthly All-Star Award. The following individuals were recognized in SFY 2022 for outstanding service to the State of Oklahoma:

2021



JULY

Wendy
Thomas



AUGUST

Katie
Fentem



SEPTEMBER

Josh
Bouye



OCTOBER

Megan
Brister



NOVEMBER

Amy
Nichols



DECEMBER

Melinda
Snowden

2022



JANUARY

Deborah
Hill-Walker



FEBRUARY

Ashley
Johnson



MARCH

Aaron
Askew



APRIL

Stacie
McDermott



MAY

Raquel
Merino



JUNE

Wendy
Payne

OHCA *Leadership*

BOARD OF DIRECTORS



Chairman Marc Nuttle,
appointed by Governor



Vice Chairman Alex Yaffe, appointed
by Speaker of the House



Tanya Case, appointed by
Speaker of the House



Thomas Sharpe, appointed
by President Pro Tempore



Corey Finch, M.D.,
appointed by Governor



Phillip Kennedy,
appointed by Governor



Susan Dell'Osso,
appointed by Governor



John Christ,
appointed by Governor



Jeffrey Cruzan M.D.,
appointed by President
Pro Tempore

EXECUTIVE STAFF

- Kevin Corbett, CEO
- Aaron Morris, Chief Financial Officer
- Ellen Buettner, Chief of Staff
- Traylor Rains, State Medicaid Director
- Brandon Keppner, Chief Operating Officer

AT A Glance



In SFY 2022, OHCA employed
557
full-time public servants

who served more than
1.3 M
members

and supported more than
72,000
providers across Oklahoma

Of those 1.3M members, more than
700,000
were children

4,000
enrolled through
 **Insure Oklahoma**

and
300,000
new members enrolled through Medicaid expansion

Prescribed drugs were the agency's largest expenditure at
1.07 B

but OHCA successfully recovered
\$485 M
through drug rebates.

OHCA also recovered
\$5.6 M
as a result of provider audits.



As responsible stewards of taxpayer dollars, the agency's administrative expenses were only
3.1%
of all total expenditures.

As part of OHCA's commitment to health outcomes, the agency authorized chiropractor services for pain management and saw a

135%
increase in members using this service.



OHCA also experienced a
50% INCREASE
increase in members utilizing psychiatric services and a 28% increase in members receiving behavioral health services.





OKLAHOMA
Health Care Authority

4345 N. Lincoln Blvd., Oklahoma City, OK 73105 | oklahoma.gov/ohca |    

This publication is authorized by the Oklahoma Health Care Authority in accordance
with state and federal regulations.

This document can be viewed on OHCA's website, oklahoma.gov/ohca.