



Beyond **THE BENEFITS**

SFY 2025 ANNUAL REPORT
APPENDIX

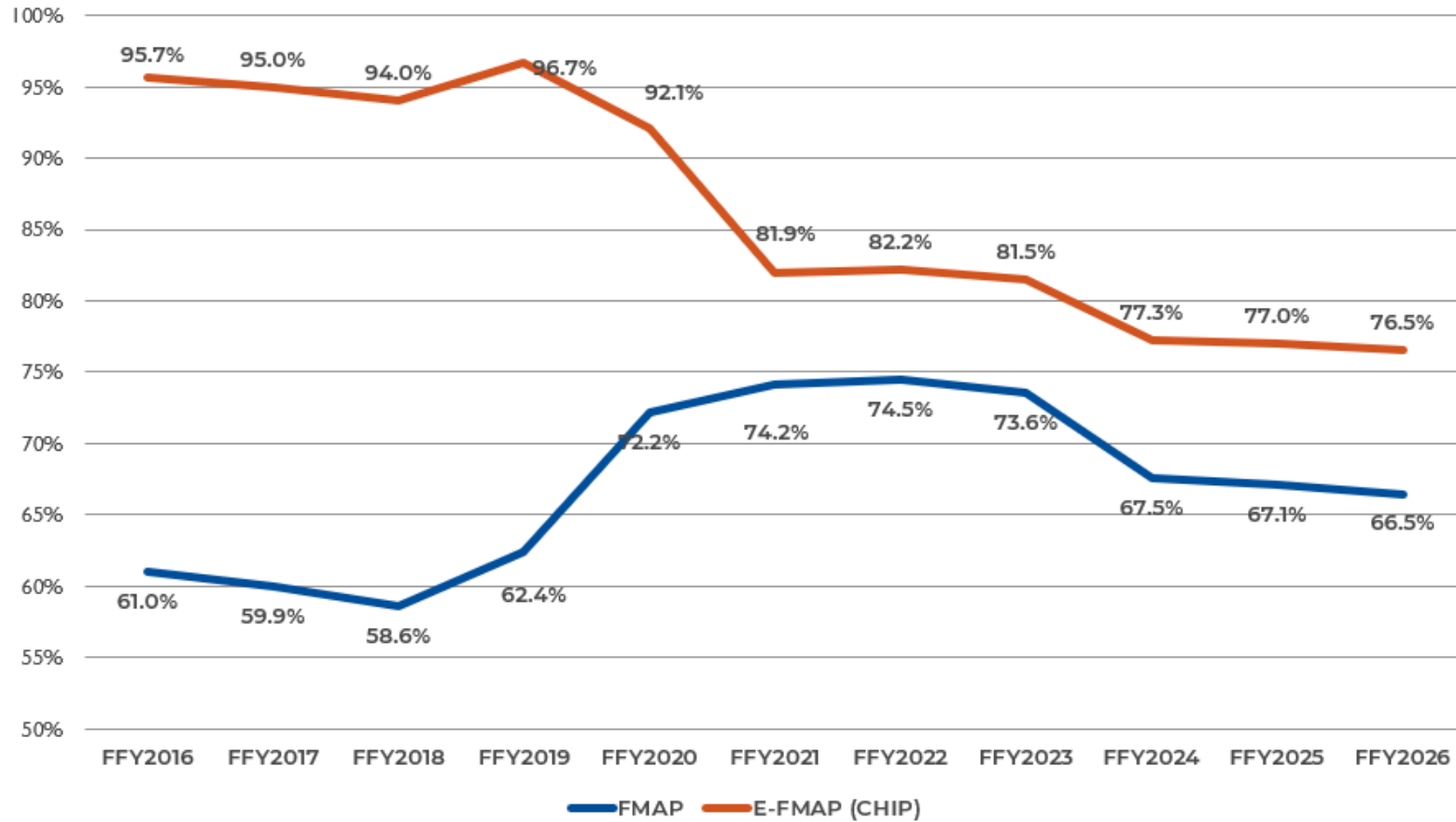


OKLAHOMA
Health Care Authority

Table of Contents

1. FMAP	1
2. Administration Cost By Agency	2
3. Revenue Sources	3
4. Federal – State Share	3
5. Expenditures By Source	4
6. Enrollees, Served And Expenditures	7
7. Enrollees And Expenditures By Age	8
8. Expenditures And Served by Benefit Plan	9
9. Top 20 Expenditures by Category of Service	10
10. Enrollment by Age	11
11. Enrollment by Race	12
12. Enrollees by Qualifying Group	13
13. Expenditures by Qualifying Group	14
14. OHCA Expenditure History	15
15. OHCA Figures by County	16
16. Expenditures By Type Of Service By Aid Category	19
17. Expenditures By Type Of Service Percent Of Change	22
18. Expenditures By Adult And Children	26
19. Expenditures By Type of Service By Benefit Type	29
20. Expenditures By Type Of Service By Aid Category By Children Under 21	33
22. Expenditures For Home & Community Based Waivers	36
23. Expenditures For Behavioral Health Services	38
24. Long-Term Care	40
25. SoonerExcel Incentive Program	41
26. Hospital Expenditures By Type	42
27. OHCA Provider Network	43

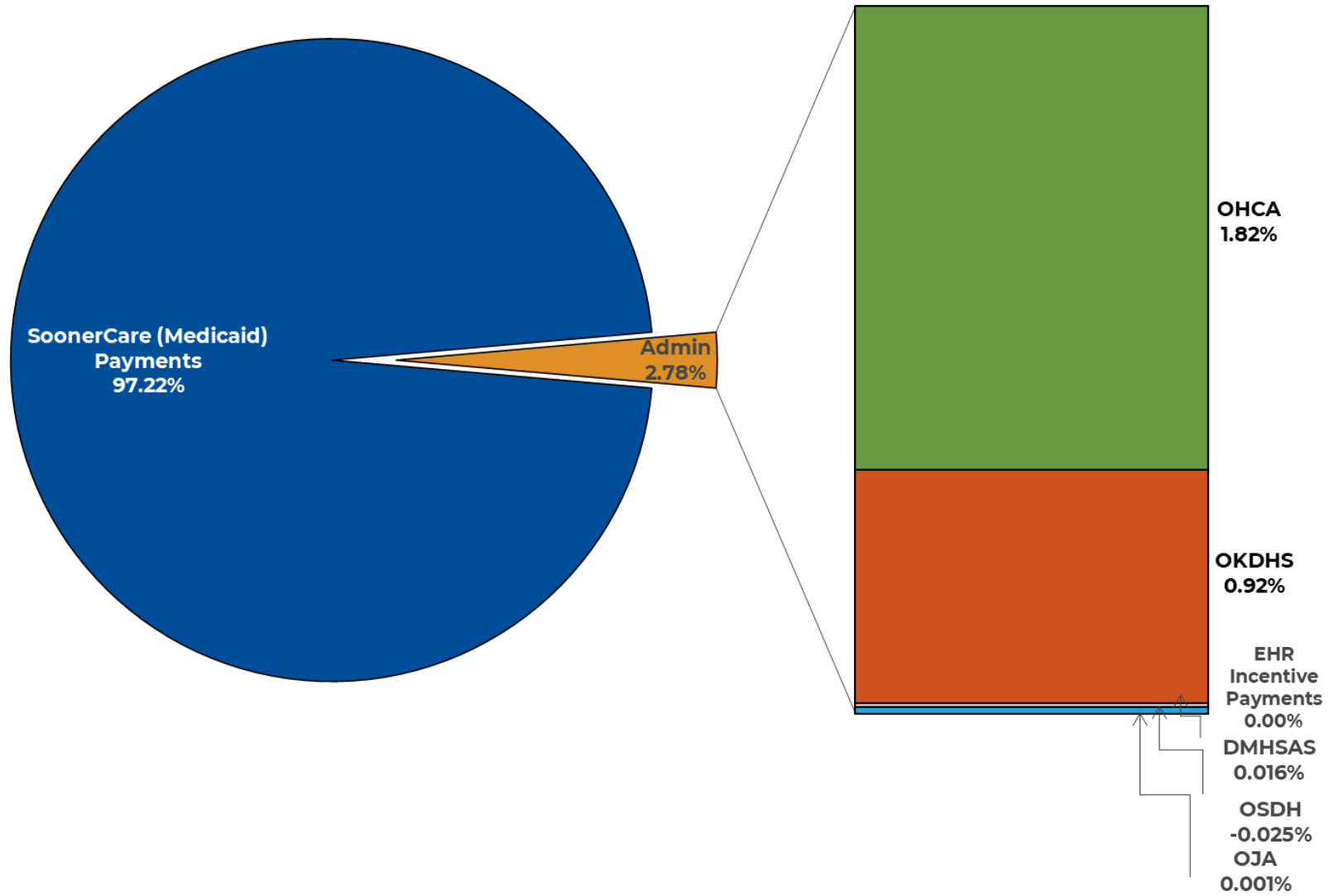
1. FMAP



The Federal Medical Assistance Percentage rates in this chart reflect the rates as they are calculated annually pursuant to Sections 1905(b) and 1101(a)(8)(B) of the Social Security Act. They do not reflect any adjustments made as the result of quarterly, annual or periodic recalculations resulting from the American Recovery and Reinvestment Act of 2009 or the Children’s Health Insurance Program Reauthorization Act of 2009. Section 2101(a) of the Affordable Care Act amended section 2105(b) of the Social Security Act to increase the enhanced FMAP for states by 23 percentage points in CHIP, but not to exceed 100 percent, for the federal fiscal period that began on October 1, 2015 and ended on September 30, 2019. As part of the American Rescue Plan Act of 2021, effective July 2021 for the first 8 quarters thru end of SFY2023, there is an additional 5% FMAP in addition to the base FMAP as a temporary fiscal incentive to implement Medicaid expansion (SFY2022 base FMAP was 74.5%).

For every \$1 in state dollars spent Oklahoma receives \$2.08 in federal dollars.

2. Administration Cost By Agency



The administrative cost is divided among the Oklahoma Health Care Authority, the Oklahoma Department of Human Services, Electronic Health Record incentive payments, the Oklahoma Department of Mental Health and Substance Abuse Services, the Oklahoma State Department of Health and the Office of Juvenile Affairs.

3. Revenue Sources

Revenue Source	Actual Revenues
State Appropriations	\$1,199,407,751
Federal Funds—OHCA	\$6,281,129,925
Federal Funds for Other State Agencies	\$1,802,421,278
Refunds from Other State Agencies	\$794,982,264
Tobacco Tax Funds	\$67,498,790
Drug Rebate	\$747,369,374
Medical Refunds	\$60,386,214
Quality of Care Fees	\$97,845,543
SHOPP Assessment Fees	\$377,623,074
Prior Year Carryover	\$317,978,238
Other Revenue	\$83,539,613
*Rate Preservation Fund	\$100,000,000
Total Revenue	\$11,930,182,065

4. Federal – State Share

Federal Fiscal Year	Total Expenditures	Federal Share	Other Revenue	State Share-OHCA	State Share-Other Agencies
2016	\$ 5,118,089,773	\$ 2,977,533,696	\$ 449,692,375	\$ 1,101,785,174	\$ 589,078,528
2017	\$ 5,292,148,089	\$ 3,076,929,283	\$ 435,083,205	\$ 1,197,368,765	\$ 582,766,836
2018	\$ 5,249,845,451	\$ 3,052,820,094	\$ 317,852,841	\$ 1,266,940,277	\$ 612,232,239
2019	\$ 5,470,272,539	\$ 3,274,709,406	\$ 504,839,789	\$ 1,126,465,946	\$ 564,257,398
2020	\$ 5,686,870,438	\$ 3,644,608,321	\$ 599,542,063	\$ 952,701,346	\$ 490,018,708
2021	\$ 6,003,671,580	\$ 4,149,664,263	\$ 433,305,679	\$ 935,901,346	\$ 484,800,292
2022	\$ 7,822,857,309	\$ 5,984,862,770	\$ 518,782,326	\$ 990,866,690	\$ 328,345,524
2023	\$ 9,683,396,025	\$ 7,336,498,899	\$ 904,945,504	\$ 1,009,678,294	\$ 432,273,328
2024	\$ 10,046,931,693	\$ 6,881,188,539	\$ 1,949,470,038	\$ 643,188,151	\$ 573,084,965
2025	\$ 11,510,700,209	\$ 7,951,405,370	\$ 1,752,795,218	\$ 1,148,713,121	\$ 657,786,500

Source: OHCA Financial Services Division, 2025. Financial statement data represents actual cash expenditures as reported to the Office of State Finance while MMIS data warehouse expenditure data is net of overpayments and adjustments. SHOPP is the Supplemental Hospital Offset Payment Program. Federal fiscal years are between October 1 and September 30.

5. Expenditures By Source

Category of Service	Total	Health Care Authority	Other State Agencies	Quality of Care Fund	Insure Oklahoma (HEEIA)	Supplemental Hospital Offset Payment Program Fund	BCC (Oklahoma Cares) Revolving
ADvantage Waiver	\$318,707,158	\$0	\$318,707,158	\$0	\$0	\$0	\$0
Ambulatory Surgery Centers	\$7,618,178	\$7,615,339	\$0	\$0	\$0	\$0	\$2,839
Behavioral Health - Case Management	\$2,574,936	\$0	\$2,574,936	\$0	\$0	\$0	\$0
Behavioral Health - CCBHC	\$204,613,511	\$0	\$204,613,511				
Behavioral Health - Inpatient	\$66,695,231	\$9,981,960	\$45,303,215	\$0	\$0	\$11,410,056	\$0
Outpatient	\$16,731,645	\$0	\$16,731,645	\$0	\$0	\$0	\$0
Behavioral Health - PRTF	\$8,871,684	\$0	\$8,871,684	\$0	\$0	\$0	\$0
Behavioral Health - Psychiatrist	\$9,899,110	\$6,024,815	\$0	\$0	\$0	\$3,867,988	\$6,307
Behavioral Health Facility- Rehab	\$147,995,775	\$0	\$147,995,775	\$0	\$0	\$0	\$2,632
Behavioral Health- Health Home	\$0	\$0	\$0	\$0	\$0	\$0	\$0
Clinic Services	\$454,008,311	\$424,361,449	\$29,603,048	\$0	\$0	\$0	\$43,813
CMS Payments	\$365,167,966	\$364,370,793	\$0	\$797,173	\$0	\$0	\$0
Dentists	\$62,213,667	\$62,209,332	\$0	\$0	\$0	\$0	\$4,335
Directed Payments	\$1,043,568,503	\$0	\$0	\$0	\$0	\$1,043,568,503	\$0
Electronic Health Records Incentive Payments	-\$391	-\$391	\$0	\$0	\$0	\$0	\$0
Family Planning/Family Planning Waiver	\$910,370	\$0	\$910,370	\$0	\$0	\$0	\$0
Home and Community Based Waiver	\$360,872,621	\$0	\$360,872,621	\$0	\$0	\$0	\$0
Home Health Care	\$32,368,514	\$32,367,599	\$0	\$0	\$0	\$0	\$914

5. Expenditures By Source (Cont.)

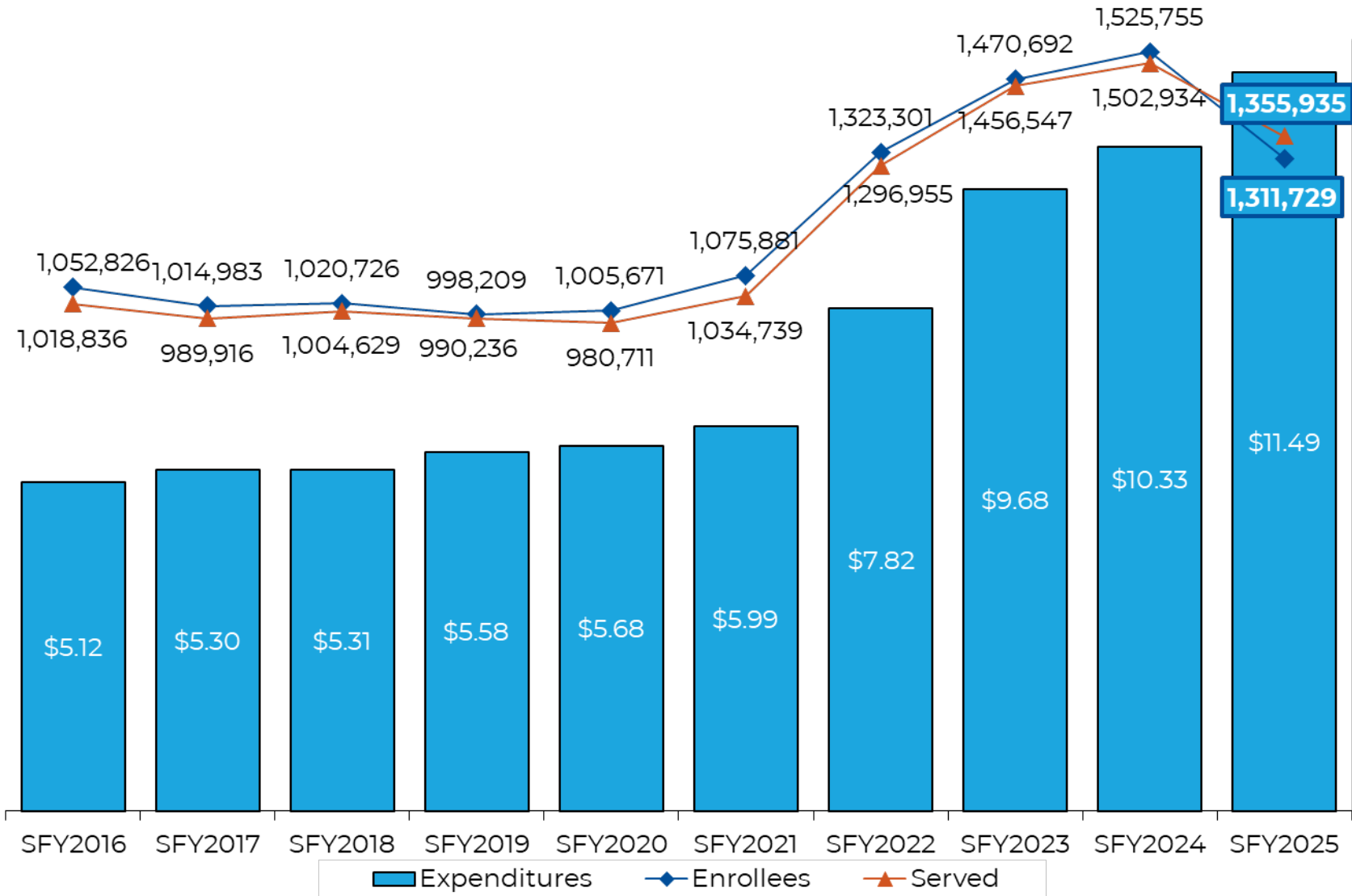
Category of Service	Total	Health Care Authority	Other State Agencies	Quality of Care Fund	Insure Oklahoma (HEEIA)	Supplemental Hospital Offset Payment Program Fund	BCC (Oklahoma Cares) Revolving Fund
Homeward Bound Waiver	\$88,047,968	\$0	\$88,047,968	\$0	\$0	\$0	\$0
ICF/IID Private	\$88,574,866	\$75,189,390	\$0	\$13,385,476	\$0	\$0	\$0
ICF/IID Public	\$20,668,244	\$0	\$20,668,244	\$0	\$0	\$0	\$0
IME/DME	\$46,769,824	\$0	\$46,769,824	\$0	\$0	\$0	\$0
In-Home Support Waiver	\$83,682,128	\$0	\$83,682,128	\$0	\$0	\$0	\$0
Inpatient Acute Care	\$1,454,895,452	\$678,269,723	\$554,725,526	\$486,687	-\$144	\$221,314,034	\$99,627
Lab & Radiology	\$18,562,444	\$18,553,060	\$0	\$0	\$0	\$0	\$9,384
Medical Supplies	\$80,771,527	\$78,054,925	\$0	\$2,711,532	\$0	\$0	\$5,071
Mid Level Practitioners	\$157,672	\$157,672	\$0	\$0	\$0	\$0	\$0
Miscellaneous Medical Payments	\$261,555	\$261,555	\$0	\$0	\$0	\$0	\$0
Money Follows the Person	\$6,469,508	\$1,560,181	\$4,909,327	\$0	\$0	\$0	\$0
Nursing Facilities	\$928,362,334	\$642,461,263	\$0	\$285,901,071	\$0	\$0	\$0
Other Practitioners	\$25,523,714	\$25,065,479	\$0	\$446,364	\$0	\$0	\$11,870
Outpatient Acute Care	\$536,869,666	\$447,439,494	\$0	\$41,604	-\$242	\$88,576,185	\$812,625
Personal Care Services	\$11,881,455	\$0	\$11,881,455	\$0	\$0	\$0	\$0
Physicians	\$384,656,732	\$282,189,313	\$102,007,854	\$58,101	-\$186	\$0	\$401,649
Premium Assistance*	\$25,171,104	\$0	\$0	\$0	\$25,171,104	\$0	\$0
Prescription Drugs	\$925,304,584	\$924,971,923	\$0	\$0	-\$528	\$0	\$333,189
Residential Behavioral Management	\$3,002,592	\$0	\$3,002,592	\$0	\$0	\$0	\$0
SoonerCare Choice	\$41,033,197	\$41,032,319	\$0	\$0	\$0	\$0	\$878

5. Expenditures By Source (Cont.)

Category of Service	Total	Health Care Authority	Other State Agencies	Quality of Care Fund	Insure Oklahoma (HEEIA)	Supplemental Hospital Offset Payment Program Fund	BCC (Oklahoma Cares) Revolving Fund
SoonerSelect Dental	\$190,160,482	\$190,160,482					
SoonerSelect DPP - Provider Incentives	\$112,507,306	\$112,507,306	\$0	\$0	\$0	\$0	\$0
SoonerSelect CSP	\$177,299,406	\$177,299,406	\$0	\$0	\$0	\$0	\$0
SoonerSelect Medical	\$2,970,806,095	\$2,563,554,412	\$407,251,683	\$0	\$0	\$0	\$0
Targeted Case Management	\$52,882,063	\$0	\$52,882,063	\$0	\$0	\$0	\$0
Telligen	\$11,724,302	\$11,724,302	\$0	\$0	\$0	\$0	\$0
Therapeutic Foster Care	-\$5,032	-\$5,032	\$0	\$0	\$0	\$0	\$0
Transportation	\$121,841,844	\$118,873,022	\$0	\$2,784,480	\$0	\$0	\$184,341
Total	\$11,510,699,817	\$7,296,251,092	\$2,512,012,627	\$306,612,488	\$25,170,005	\$1,368,736,765	\$1,919,473

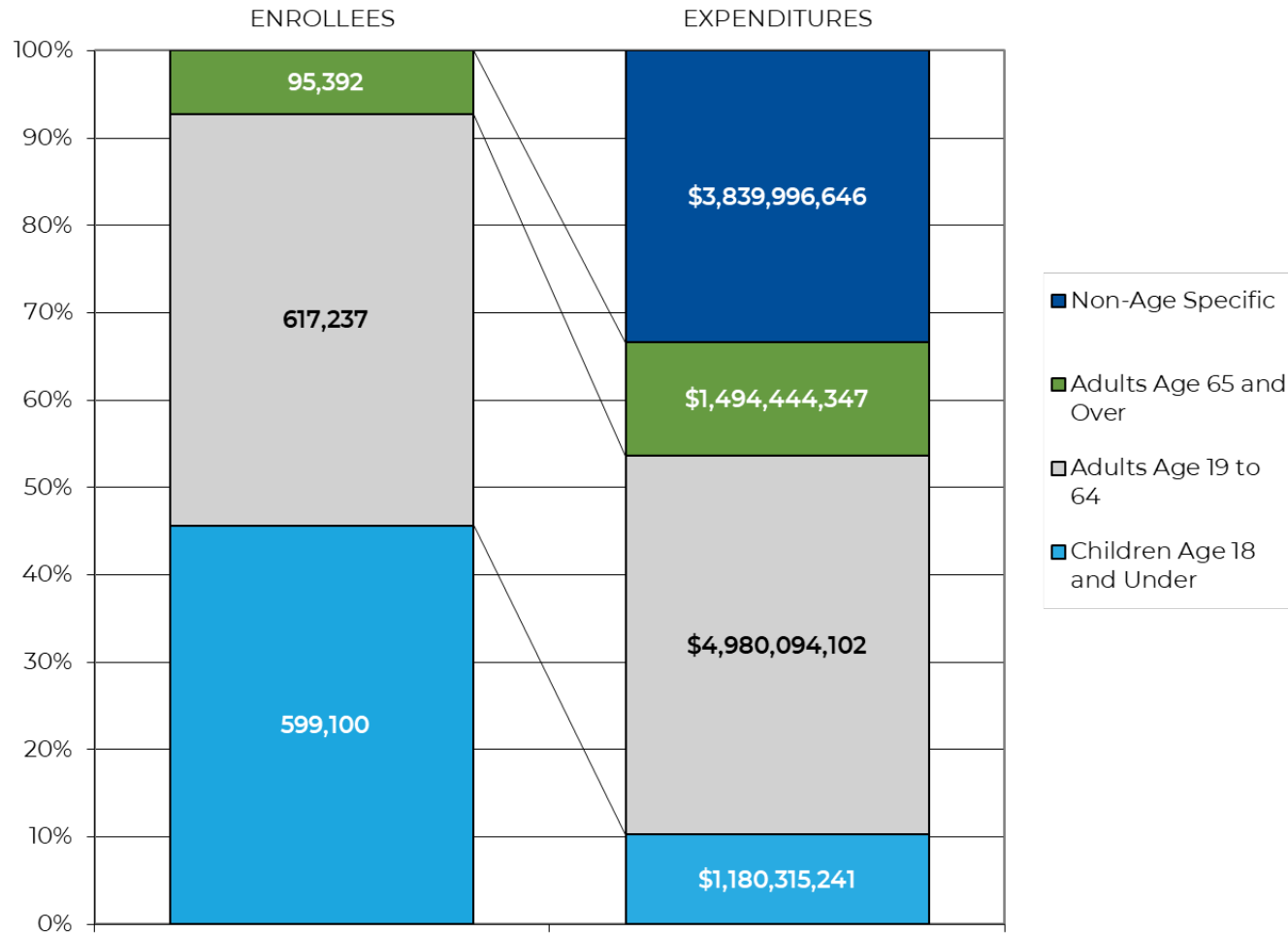
Source: OHCA Financial Services Division, 2025. *Health Employee and Economy Improvement Act (HEEIA) Revolving Fund includes amounts paid out of Fund 245. Financial statement data represents actual cash expenditures as reported to the Office of State Finance while MMIS data warehouse expenditure data is net of overpayments and adjustments. The Medicaid Program fund, the HEEIA Revolving Fund and the BCC (Oklahoma Cares) Revolving Fund are all funded by tobacco tax collections.

6. Enrollees, Served And Expenditures



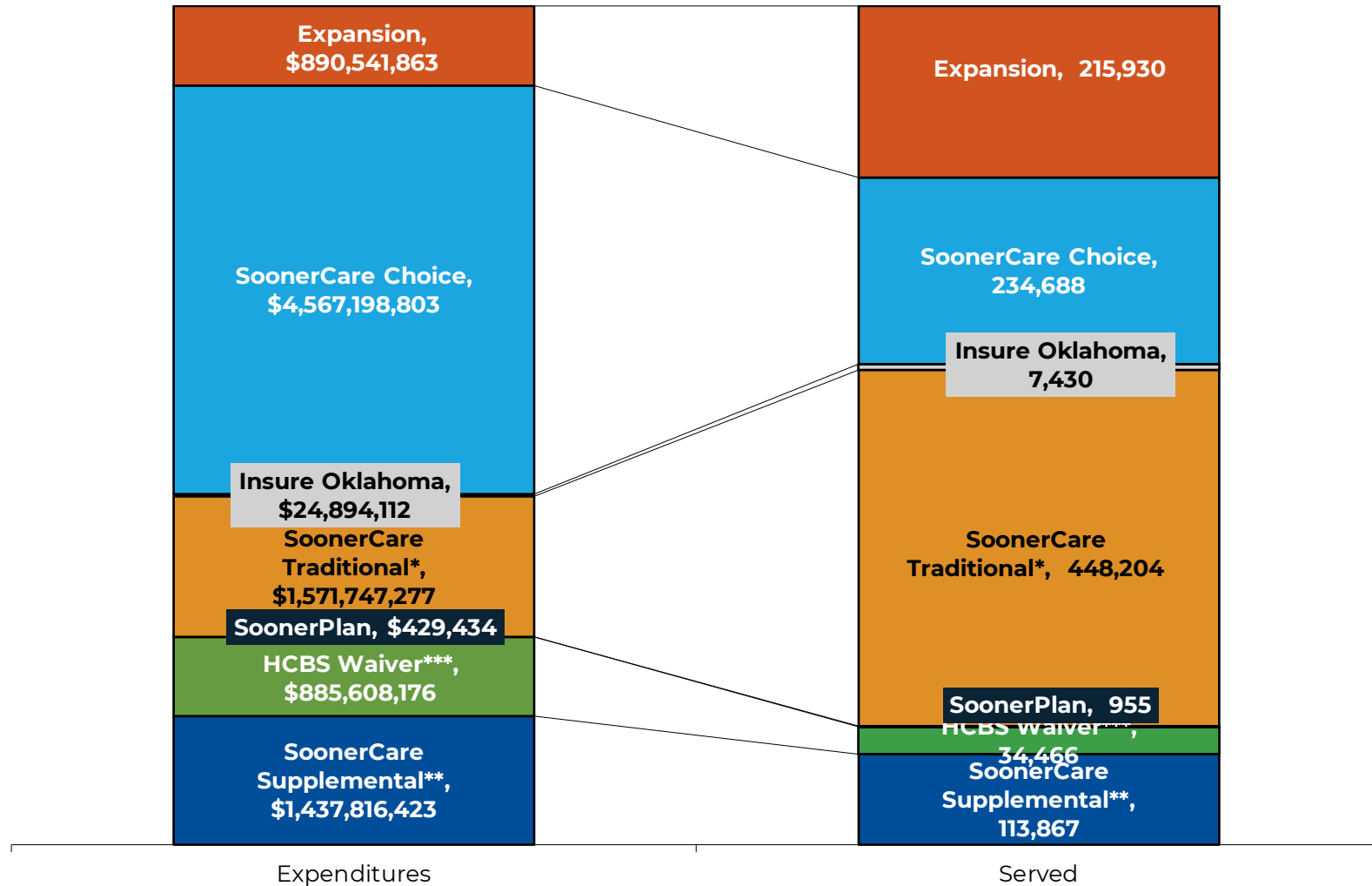
Expenditures are in billions.

7. Enrollees And Expenditures By Age



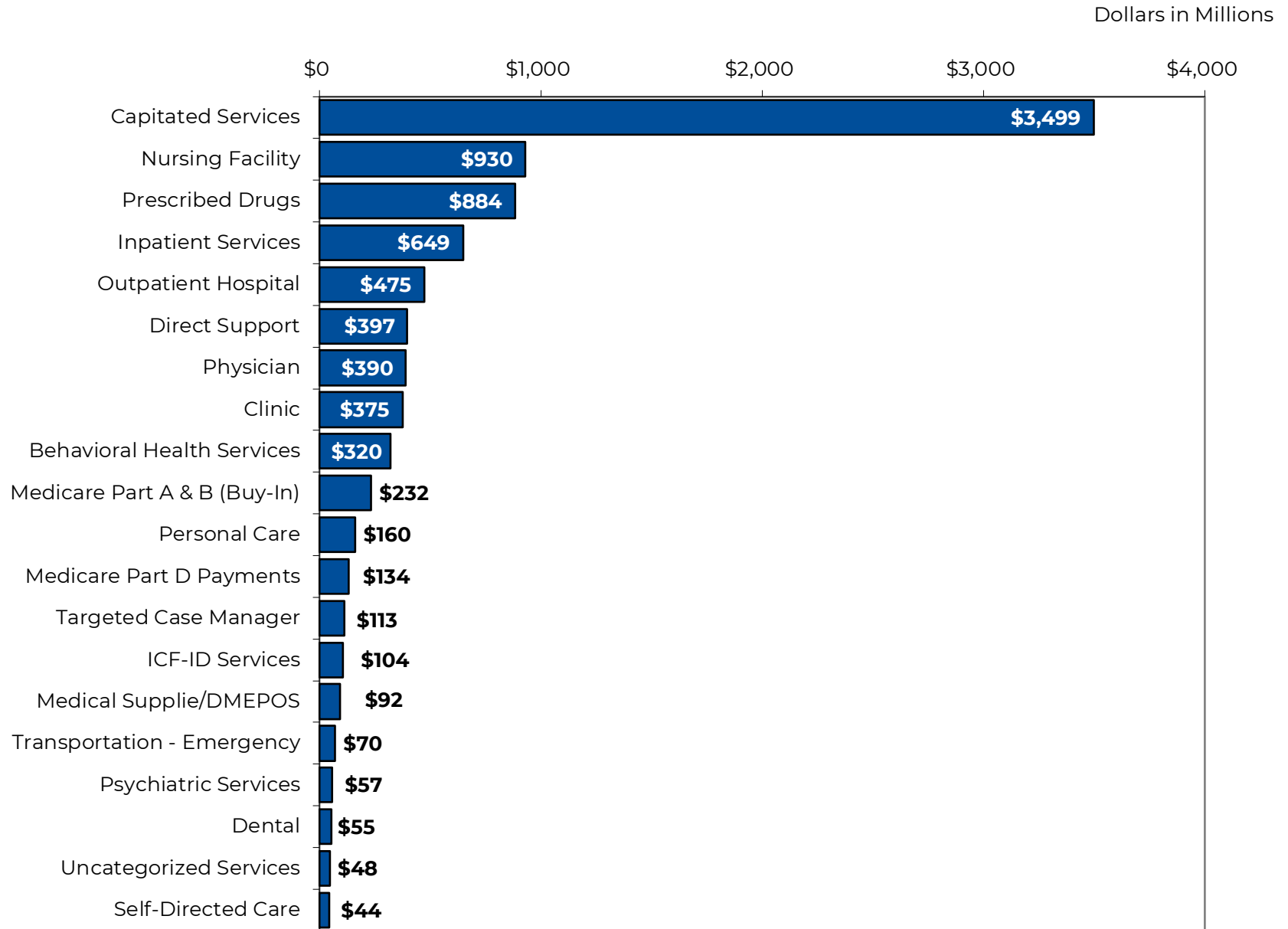
Non-member specific payments include \$937,421,905 in SHOPP payments; \$38,078,374 in Hospital Supplemental payments; \$576,821,011 in UPL payments; \$263,101,938 in Medicare Part A & B (Buy-In) payments; \$117,316,630 in Medicare Part D (clawback) payments; \$21,390,637 NH Services payments; \$30,387,873 in Insure Oklahoma ESI premiums; \$10,921 in Insure Oklahoma ESI Out-Of-Pocket payments; \$58,258,178 in Outpatient Behavioral Health Supplemental payments; \$11,426,324 in ASPAPP payments; \$2,991,178 in SoonerExcel payments; \$9,989,345 in Health Access Network payments; \$32,655,971 in NET payments; \$5,666,090 in ICF/MR payments; \$13,494,623 in Self-Directed Care; \$175,000,000 in State Only Dollars for Senate Bill 32X and \$32,949,271 in non-member specific provider adjustments.

8. Expenditures And Served by Benefit Plan

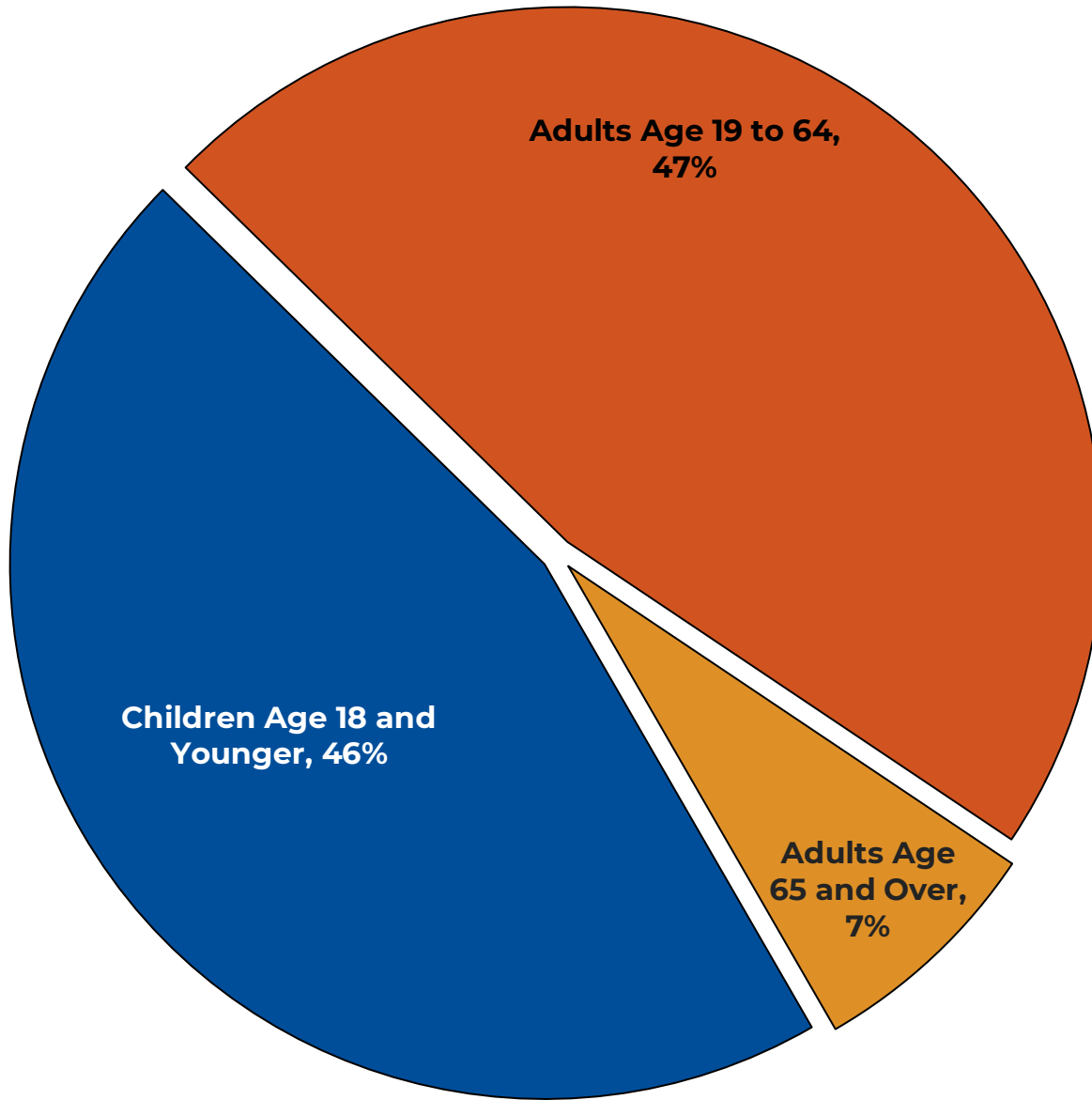


Excludes non-member specific payments. Choice members are enrolled/served under Traditional until their Choice becomes effective. Therefore, members may be counted in both categories. Supplemental and Home and Community-Based Services (HCBS) waiver served members may also be included in the Traditional counts. HCBS Waiver expenditures are for all services to waiver members, including services not paid with waiver funds.

9. Top 20 Expenditures by Category of Service

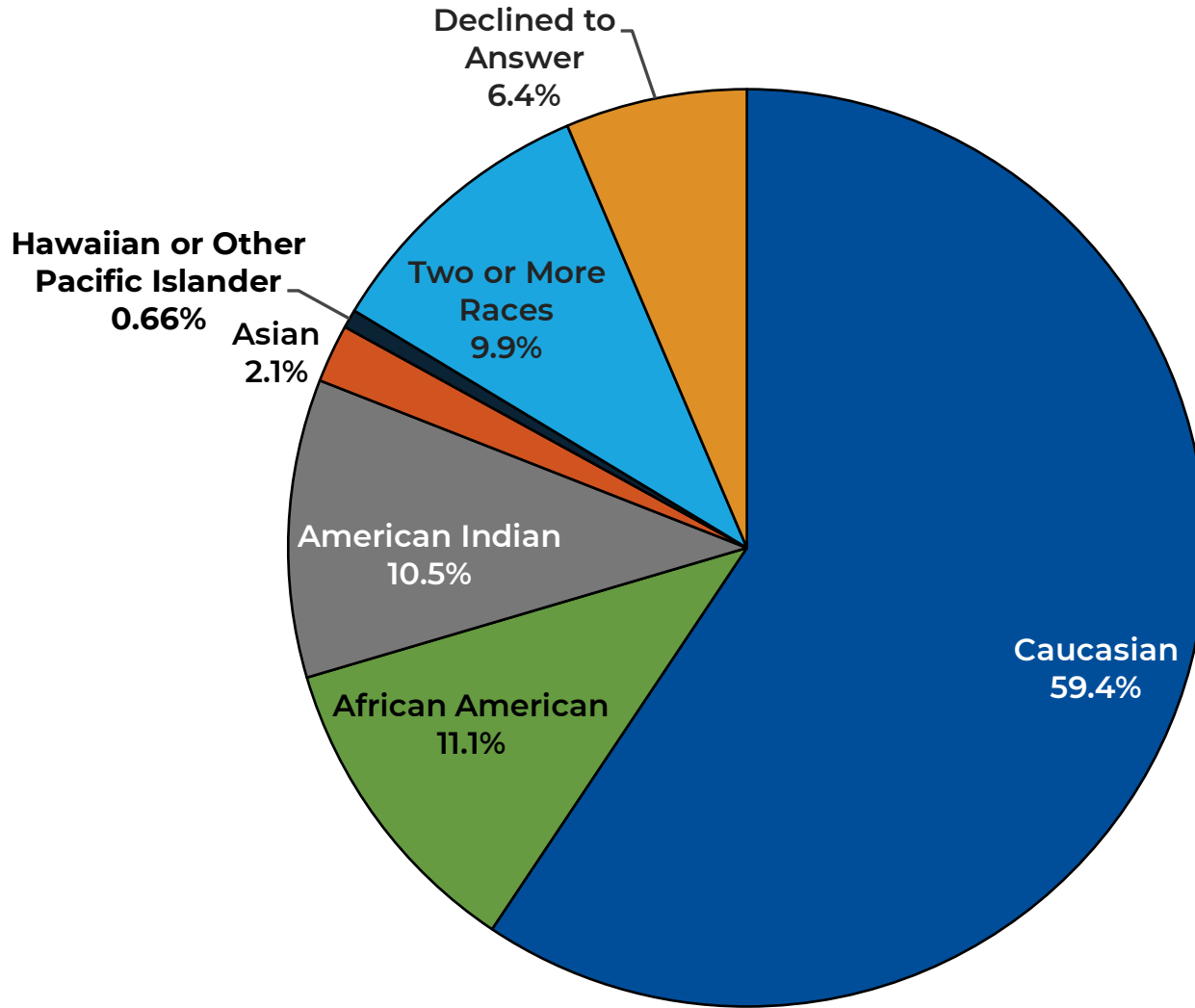


10. Enrollment by Age



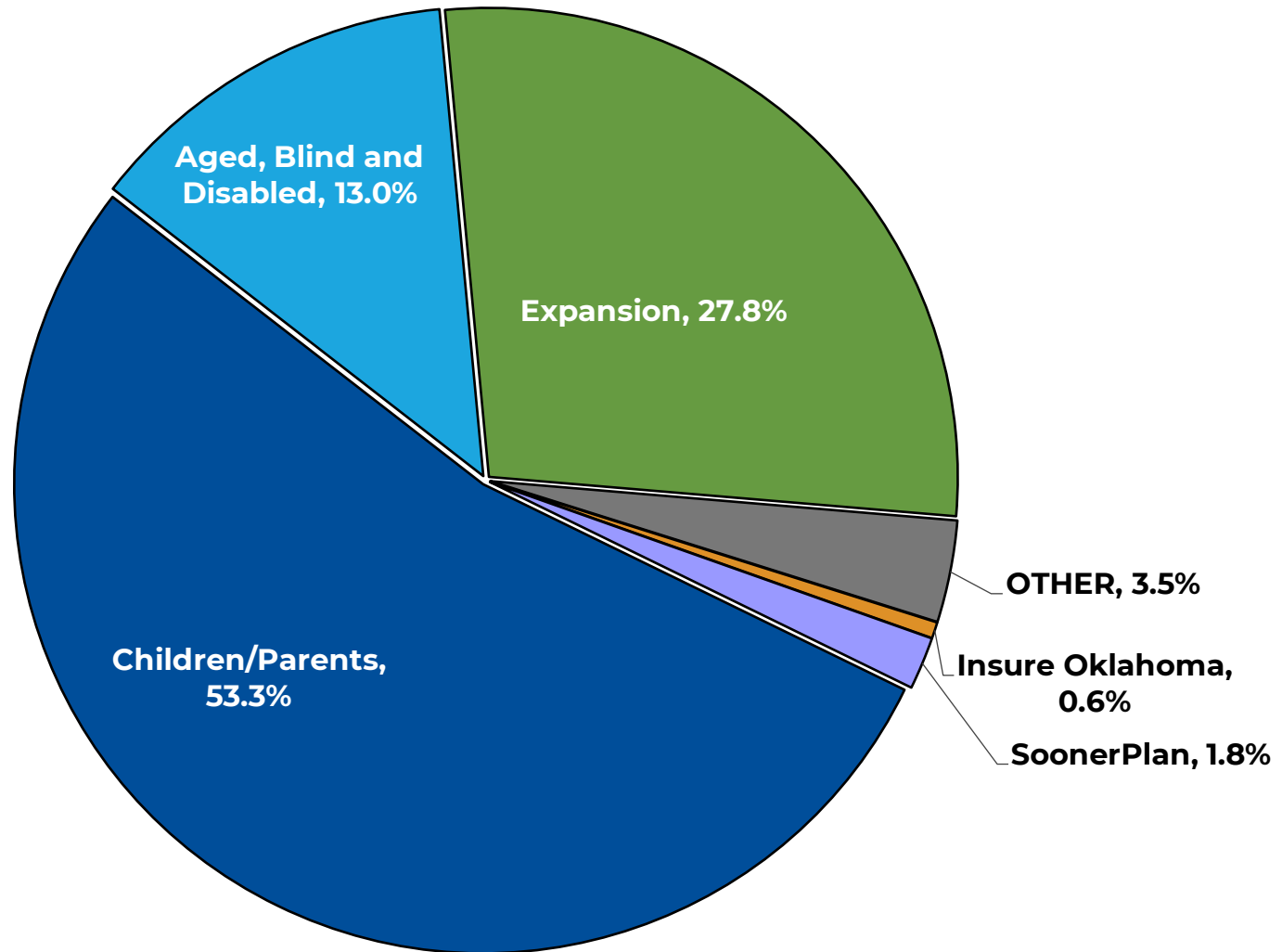
Enrollment includes Insure Oklahoma.

11. Enrollment by Race



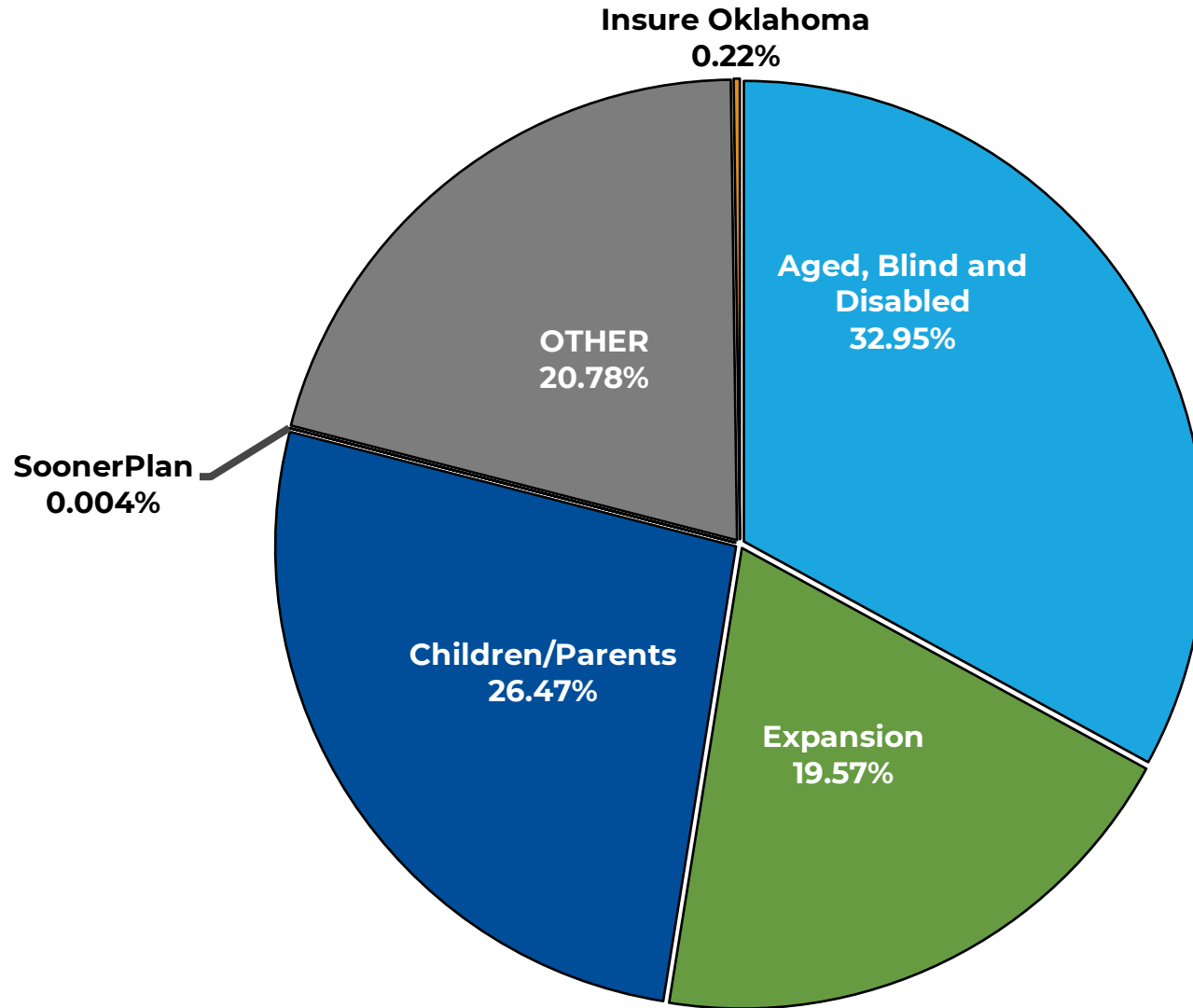
Total Enrolled SFY 2025 - 1,311,729 (Hispanic or Latino Ethnicity = 233,333). The multiple race group has two or more races reported. Race is self-reported by members at the time of enrollment. Includes Insure Oklahoma

12. Enrollees by Qualifying Group



Children/Parents includes Child Custody and Oklahoma Cares (Breast & Cervical Cancer). Other enrollees include: Refugees, Phenylketonuria (PKU), Qualifying Individual Group One, Service Limited Medicare Beneficiaries; Developmental Disabilities Services Division; Soon-to-be-Sooners; and Tuberculosis members. Aged, Blind and Disabled includes Tax Equity & Financial Responsibility Act (TEFRA) enrollees. Expansion effective July 2021.

13. Expenditures by Qualifying Group



Children/Parents includes Child Custody and Oklahoma Cares (Breast & Cervical Cancer). Other expenditures include: Refugees, Phenylketonuria (PKU), Qualifying Individual Group One, Service Limited Medicare Beneficiaries; Developmental Disabilities Services Division; Soon-to-be-Sooners; and Tuberculosis members. Aged, Blind and Disabled includes Tax Equity & Financial Responsibility Act (TEFRA) expenditures. Other also includes non-member specific payments such as Supplemental Hospital Offset Payments and Hospital Supplemental Payments. Expansion effective July 2021.

14. OHCA Expenditure History

SFY	SFY Expenditures	SFY Expenditures (Non-Member Specific Payments Excluded)	Oklahoma Population	Members Enrolled	Members Served	Per Member Enrolled	Per Member Served	Per Member Enrolled (Non-Member Specific Payments Excluded)	Per Member Served (Non-Member Specific Payments Excluded)	Per Population	% Pop Enrolled
2003	\$ 2,099,410,781		3,493,700	648,820	635,844	\$ 3,236	\$ 3,302			\$ 601	18.6%
2004	\$ 2,116,575,700		3,511,800	670,797	669,102	\$ 3,155	\$ 3,163			\$ 603	19.1%
2005	\$ 2,805,599,500		3,523,553	696,743	687,451	\$ 4,027	\$ 4,081			\$ 796	19.8%
2006	\$ 3,077,780,653	\$ 2,929,072,534	3,548,000	742,152	727,224	\$ 4,147	\$ 4,232	\$ 3,947	\$ 4,028	\$ 867	20.9%
2007	\$ 3,377,085,329	\$ 3,216,309,977	3,579,212	763,565	745,474	\$ 4,423	\$ 4,530	\$ 4,212	\$ 4,314	\$ 944	21.3%
2008	\$ 3,713,543,704	\$ 3,493,251,183	3,617,316	797,556	771,105	\$ 4,656	\$ 4,816	\$ 4,380	\$ 4,530	\$ 1,027	22.0%
2009	\$ 3,959,130,141	\$ 3,756,304,928	3,642,361	825,138	809,251	\$ 4,798	\$ 4,892	\$ 4,552	\$ 4,642	\$ 1,087	22.7%
2010	\$ 4,327,974,101	\$ 4,020,379,920	3,687,050	885,238	881,220	\$ 4,889	\$ 4,911	\$ 4,542	\$ 4,562	\$ 1,174	24.0%
2011	\$ 4,379,387,533	\$ 4,019,868,307	3,751,351	968,296	929,348	\$ 4,523	\$ 4,712	\$ 4,151	\$ 4,325	\$ 1,167	25.8%
2012	\$ 4,777,344,727	\$ 4,105,453,932	3,791,508	1,007,356	943,695	\$ 4,742	\$ 5,062	\$ 4,075	\$ 4,350	\$ 1,260	26.6%
2013	\$ 4,994,749,021	\$ 4,240,915,548	3,814,820	1,040,332	1,015,939	\$ 4,801	\$ 4,916	\$ 4,077	\$ 4,174	\$ 1,309	27.3%
2014	\$ 5,206,484,966	\$ 4,397,896,751	3,850,568	1,033,114	1,028,097	\$ 5,040	\$ 5,064	\$ 4,257	\$ 4,278	\$ 1,352	26.8%
2015	\$ 5,138,872,188	\$ 4,350,488,542	3,878,051	1,021,359	996,825	\$ 5,031	\$ 5,155	\$ 4,260	\$ 4,364	\$ 1,325	26.3%
2016	\$ 5,123,556,347	\$ 4,319,656,828	3,911,338	1,052,826	1,018,836	\$ 4,866	\$ 5,029	\$ 4,103	\$ 4,240	\$ 1,310	26.9%
2017	\$ 5,303,169,414	\$ 4,435,467,695	3,923,561	1,014,983	989,916	\$ 5,225	\$ 5,357	\$ 4,370	\$ 4,481	\$ 1,352	25.9%
2018	\$ 5,308,124,649	\$ 4,498,650,993	3,930,864	1,020,726	1,004,629	\$ 5,200	\$ 5,284	\$ 4,407	\$ 4,478	\$ 1,350	26.0%
2019	\$ 5,578,658,129	\$ 4,747,748,333	3,943,079	998,209	990,236	\$ 5,589	\$ 5,634	\$ 4,756	\$ 4,795	\$ 1,415	25.3%
2020	\$ 5,676,030,814	\$ 4,858,260,415	3,965,243	1,005,671	980,711	\$ 5,644	\$ 5,788	\$ 4,831	\$ 4,954	\$ 1,431	25.4%
2021	\$ 5,993,378,638	\$ 5,177,366,641	3,992,760	1,075,881	1,034,739	\$ 5,571	\$ 5,792	\$ 4,812	\$ 5,004	\$ 1,501	26.9%
2022	\$ 7,818,069,221	\$ 6,772,763,841	4,025,327	1,312,089	1,296,955	\$ 5,958	\$ 6,028	\$ 5,162	\$ 5,222	\$ 1,942	32.6%
2023	\$ 9,676,282,569	\$ 8,273,998,634	4,062,716	1,470,692	1,456,547	\$ 6,579	\$ 6,643	\$ 5,626	\$ 5,681	\$ 2,382	36.2%
2024	\$ 10,327,062,611	\$ 8,705,086,223	4,097,758	1,525,755	1,502,934	\$ 6,768	\$ 6,871	\$ 5,705	\$ 5,792	\$ 2,520	37.2%
2025	\$ 11,494,850,336	\$ 9,378,236,087	4,123,288	1,311,729	1,355,935	\$ 8,763	\$ 8,477	\$ 7,150	\$ 6,916	\$ 2,788	31.8%

Enrollment and served includes Insure Oklahoma. Population estimate is from the U.S. Census Bureau. Estimates rounded to nearest 100. American Fast Fact Finder PEPANNRES (Annual Estimates of the Resident Population) table.

15. OHCA Figures by County

County	Population Est. (July 2025*)	Unduplicated Members*	% Population Enrolled in SoonerCare	Expenditures	Annual Per Capita	Monthly Average Per Members
ADAIR	19,828	10,476	53%	\$ 80,011,499	\$ 4,035	\$ 636
ALFALFA	5,649	1,391	25%	\$ 6,891,497	\$ 1,220	\$ 413
ATOKA	14,609	5,214	36%	\$ 33,183,137	\$ 2,271	\$ 530
BEAVER	4,882	1,125	23%	\$ 6,039,424	\$ 1,237	\$ 447
BECKHAM	22,159	7,455	34%	\$ 45,868,896	\$ 2,070	\$ 513
BLAINE	8,515	3,094	36%	\$ 18,231,851	\$ 2,141	\$ 491
BRYAN	51,367	18,400	36%	\$ 113,028,362	\$ 2,200	\$ 512
CADDO	26,130	11,225	43%	\$ 82,152,925	\$ 3,144	\$ 610
CANADIAN	187,189	34,964	19%	\$ 190,375,971	\$ 1,017	\$ 454
CARTER	48,910	20,460	42%	\$ 128,171,513	\$ 2,621	\$ 522
CHEROKEE	49,196	17,262	35%	\$ 155,124,760	\$ 3,153	\$ 749
CHOCTAW	14,059	6,619	47%	\$ 48,683,799	\$ 3,463	\$ 613
CIMARRON	2,059	597	29%	\$ 2,529,119	\$ 1,228	\$ 353
CLEVELAND	303,973	64,204	21%	\$ 405,134,947	\$ 1,333	\$ 526
COAL	5,436	2,376	44%	\$ 19,008,133	\$ 3,497	\$ 667
COMANCHE	122,158	39,218	32%	\$ 231,578,008	\$ 1,896	\$ 492
COTTON	5,432	1,868	34%	\$ 12,001,930	\$ 2,209	\$ 535
CRAIG	14,518	6,136	42%	\$ 56,374,084	\$ 3,883	\$ 766
CREEK	74,967	24,857	33%	\$ 179,268,086	\$ 2,391	\$ 601
CUSTER	28,175	8,620	31%	\$ 49,170,178	\$ 1,745	\$ 475
DELAWARE	41,910	13,715	33%	\$ 102,530,697	\$ 2,446	\$ 623
DEWEY	4,207	1,166	28%	\$ 8,432,139	\$ 2,004	\$ 603
ELLIS	3,613	957	26%	\$ 7,064,640	\$ 1,955	\$ 615
GARFIELD	61,779	20,549	33%	\$ 142,198,355	\$ 2,302	\$ 577
GARVIN	26,377	10,546	40%	\$ 75,128,261	\$ 2,848	\$ 594
GRADY	59,128	13,714	23%	\$ 90,494,783	\$ 1,530	\$ 550
GRANT	4,067	1,094	27%	\$ 6,861,431	\$ 1,687	\$ 523
GREER	5,373	1,927	36%	\$ 13,685,607	\$ 2,547	\$ 592
HARMON	2,327	1,817	78%	\$ 7,167,831	\$ 3,080	\$ 329

15. OHCA Figures by County (Cont.)

County	Population Est. (July 2025*)	Unduplicated Members**	% Population Enrolled in SoonerCare	Expenditures	Annual Per Capita	Monthly Average Per Members
HARPER	3,172	845	27%	\$ 5,217,962	\$ 1,645	\$ 515
HASKELL	11,787	5,318	45%	\$ 38,621,057	\$ 3,277	\$ 605
HUGHES	13,455	5,340	40%	\$ 48,787,597	\$ 3,626	\$ 761
JACKSON	24,764	8,718	35%	\$ 45,132,446	\$ 1,823	\$ 431
JEFFERSON	5,431	2,694	50%	\$ 13,610,443	\$ 2,506	\$ 421
JOHNSTON	10,448	4,561	44%	\$ 33,711,087	\$ 3,227	\$ 616
KAY	43,490	18,277	42%	\$ 113,436,271	\$ 2,608	\$ 517
KINGFISHER	15,795	4,112	26%	\$ 33,964,190	\$ 2,150	\$ 688
KIOWA	8,181	3,568	44%	\$ 27,025,138	\$ 3,303	\$ 631
LATIMER	9,645	4,772	49%	\$ 39,580,306	\$ 4,104	\$ 691
LEFLORE	50,196	19,734	39%	\$ 134,889,235	\$ 2,687	\$ 570
LINCOLN	35,278	11,478	33%	\$ 71,649,813	\$ 2,031	\$ 520
LOGAN	55,473	10,161	18%	\$ 67,186,385	\$ 1,211	\$ 551
LOVE	10,780	3,598	33%	\$ 18,445,096	\$ 1,711	\$ 427
MCCLAIN	49,647	12,259	25%	\$ 77,313,096	\$ 1,557	\$ 526
MCCURTAIN	30,744	14,960	49%	\$ 94,722,853	\$ 3,081	\$ 528
MCINTOSH	19,758	8,191	41%	\$ 71,676,510	\$ 3,628	\$ 729
MAJOR	7,536	1,858	25%	\$ 11,059,752	\$ 1,468	\$ 496
MARSHALL	16,255	6,076	37%	\$ 36,455,737	\$ 2,243	\$ 500
MAYES	40,416	15,260	38%	\$ 116,783,271	\$ 2,890	\$ 638
MURRAY	13,805	4,476	32%	\$ 32,507,596	\$ 2,355	\$ 605
MUSKOGEE	66,708	29,607	44%	\$ 238,756,687	\$ 3,579	\$ 672
NOBLE	10,899	3,070	28%	\$ 27,352,822	\$ 2,510	\$ 742
NOWATA	9,522	3,500	37%	\$ 25,513,060	\$ 2,679	\$ 607
OKFUSKEE	11,451	5,094	44%	\$ 49,405,328	\$ 4,314	\$ 808
OKLAHOMA	822,125	277,411	34%	\$ 1,753,140,989	\$ 2,132	\$ 527
OKMULGEE	37,241	14,977	40%	\$ 131,170,817	\$ 3,522	\$ 730
OSAGE	46,794	6,274	13%	\$ 45,550,898	\$ 973	\$ 605
OTTAWA	30,438	14,680	48%	\$ 98,639,857	\$ 3,241	\$ 560

15. OHCA Figures by County (Cont.)

County	Population Est. (July 2025*)	Unduplicated Members**	% Population Enrolled in SoonerCare	Expenditures	Annual Per Capita	Monthly Average Per Members
PAWNEE	16,029	6,250	39%	\$ 42,534,686	\$ 2,654	\$ 567
PAYNE	83,889	19,860	24%	\$ 138,057,311	\$ 1,646	\$ 579
PITTSBURG	43,320	16,235	37%	\$ 122,822,323	\$ 2,835	\$ 630
PONTOTOC	38,528	14,479	38%	\$ 136,688,078	\$ 3,548	\$ 787
POTTAWATOMI	75,102	28,412	38%	\$ 199,300,064	\$ 2,654	\$ 585
PUSHMATAHA	10,807	4,593	43%	\$ 33,624,583	\$ 3,111	\$ 610
ROGER MILLS	3,259	965	30%	\$ 4,763,921	\$ 1,462	\$ 411
ROGERS	102,197	21,422	21%	\$ 154,578,119	\$ 1,513	\$ 601
SEMINOLE	23,441	11,004	47%	\$ 86,286,166	\$ 3,681	\$ 653
SEQUOYAH	40,842	18,237	45%	\$ 135,467,330	\$ 3,317	\$ 619
STEPHENS	44,310	15,645	35%	\$ 102,080,141	\$ 2,304	\$ 544
TEXAS	20,322	6,284	31%	\$ 22,989,668	\$ 1,131	\$ 305
TILLMAN	6,780	2,826	42%	\$ 12,714,363	\$ 1,875	\$ 375
TULSA	698,782	218,456	31%	\$ 1,419,319,300	\$ 2,031	\$ 541
WAGONER	93,263	19,550	21%	\$ 130,363,284	\$ 1,398	\$ 556
WASHINGTON	54,037	16,430	30%	\$ 118,665,334	\$ 2,196	\$ 602
WASHITA	10,884	3,642	33%	\$ 22,462,270	\$ 2,064	\$ 514
WOODS	8,443	2,443	29%	\$ 13,439,293	\$ 1,592	\$ 458
WOODWARD	19,827	5,638	28%	\$ 29,739,768	\$ 1,500	\$ 440
Out of State		6,426		\$ 1,195,761		
OTHER		1,017		\$ 2,750,060,413		
	4,123,288	1,311,729	32%	\$ 11,494,850,336	\$ 2,788	\$ 730

*Source: Population Division, U.S. Census Bureau. Estimates rounded to nearest 100. American Fast Fact Finder PEPANNRES (Annual Estimates of the Resident Population) table. **Enrollees listed above are the unduplicated count per last county on the enrollee record for the entire state fiscal year (July-June). Garfield and Garvin counties have public institutions and Okfuskee and Craig counties have private institutions for the intellectually disabled causing the average dollars per enrollee to be higher than the norm.

Non-member specific payments include \$937,421,905 in SHOPP payments; \$38,078,374 in Hospital Supplemental payments; \$576,821,011 in UPL payments; \$263,101,938 in Medicare Part A & B (Buy-In) payments; \$117,316,630 in Medicare Part D (clawback) payments; \$21,390,637 NH Services payments; \$30,387,873 in Insure Oklahoma ESI premiums; \$10,921 in Insure Oklahoma ESI Out-Of Pocket payments; \$58,258,178 in

Outpatient Behavioral Health Supplemental payments; \$11,426,324 in ASPAPP payments \$2,991,178 in SoonerExcel payments; \$9,989,345 in Health Access Network payments; \$32,655,971 in NET payments; \$5,666,090 in ICF/MR payments; \$13,494,623 in Self-Directed Care; \$175,000,000 in State Only Dollars for Senate Bill 32X and \$32,949,271 in non-member specific provider adjustments.

16. Expenditures By Type Of Service By Aid Category

Type of Service	Aged	Blind / Disabled	Expansion	Children & Parents (TANF)	Oklahoma Cares (BCC)	SoonerPlan	Parent Caretaker	TEFRA	Other Total*
Adult Day Care	\$1,542,975	\$7,307,486	\$0	\$0	\$0	\$0	\$0	\$0	\$0
Advanced Practice Nurse	\$2,333	\$54,742	\$31,991	\$34,079	\$0	\$0	\$4,457	\$0	\$233
ADvantage Home Delivered Meals	\$16,342,822	\$20,836,794	\$0	\$0	\$0	\$0	\$0	\$0	-\$90
Ambulatory Surgical Services	\$897,781	\$2,853,130	\$1,395,300	\$1,510,660	\$2,509	\$0	\$259,455	\$3,360	\$14,372
Architectural Modification	\$332,299	\$858,016	\$0	\$0	\$0	\$0	\$0	\$0	\$0
Audiology Services	\$4,107	\$17,767	\$5,733	\$39,880	\$50	\$0	\$1,992	\$158	\$135
Behavioral Health	\$10,940,329	\$145,254,085	\$65,839,343	\$81,981,070	-\$1,133	\$0	\$11,425,499	\$143,492	\$1,867,925
Capitated Services	\$28,861,109	\$7,229,664	\$1,365,523,688	\$1,566,335,971	\$1,106	\$0	\$295,647,288	\$3,173	\$155,776,303
Chiropractic Services	\$5,931	\$48,001	\$115,579	\$15,015	\$0	\$0	\$30,630	\$0	\$356
Clinic	\$7,201,248	\$69,781,304	\$110,376,260	\$146,501,609	\$46,101	\$43,809	\$25,307,005	\$3,990,080	\$6,551,285
Clinics - OSA Services	-\$892	\$82,413	\$133,793	\$579,404	\$44	\$11,570	\$48,969	\$1,069	\$61,027
Community Mental Health	\$36,592	\$2,722,354	\$1,710,646	\$759,613	\$0	\$0	\$84,208	\$0	\$43,938
Dental	\$2,158,574	\$15,071,117	\$9,340,569	\$25,519,787	\$3,886	\$0	\$2,366,812	\$60,229	\$306,196
Direct Support	\$35,483,740	\$361,794,897	\$0	\$0	\$0	\$0	\$0	\$0	\$0
Employee Training Specialist	\$1,376,485	\$35,189,901	\$0	\$0	\$0	\$0	\$0	\$0	\$0
End-Stage Renal Disease	\$1,443,341	\$8,664,140	\$1,212,265	\$39,953	-\$3,837	\$586	\$566,317	\$0	\$167
Eye Care and Exams	\$268,328	\$1,496,223	\$628,660	\$3,718,887	\$528	\$0	\$190,089	\$4,268	\$49,217
Eyewear	\$1,996	\$288,456	\$40,656	\$1,691,197	\$0	\$0	\$4,410	\$5,332	\$18,009

16. Expenditures By Type Of Service By Aid Category (Cont.)

Type of Service	Aged	Blind / Disabled	Expansion	Children & Parents (TANF)	Oklahoma Cares (BCC)	SoonerPlan	Parent Caretaker	TEFRA	Other Total*
Self Directed Care	\$13,051,434	\$19,036,982	\$0	\$0	\$0	\$0	\$0	\$0	\$11,724,302
Group Home	\$2,876,856	\$34,278,705	\$0	\$0	\$0	\$0	\$0	\$0	\$0
Home Health	\$146,511	\$21,930,999	\$310,794	\$2,225,154	\$960	\$0	\$29,059	\$6,154,280	\$33,375
Homemaker Services	\$0	\$56,505	\$0	\$0	\$0	\$0	\$0	\$0	\$0
Hospice	\$149,902	\$1,394,588	\$236,281	\$26,201	\$4,993	\$0	\$3,257	\$6,513	\$513
ICF-ID Services	\$9,599,836	\$87,016,270	\$0	\$1,959,583	\$0	\$0	\$0	\$0	\$5,856,106
Inpatient Services	\$26,385,257	\$261,480,966	\$163,630,420	\$173,471,412	\$92,206	\$67,574	\$17,891,281	\$833,667	\$3,772,061
Laboratory Services	\$389,761	\$4,613,684	\$3,703,570	\$4,119,030	\$10,267	\$4,729	\$1,109,710	\$25,502	\$601,410
Medicare Part A & B (Buy-In) Payments	\$232,058,831	\$0	\$0	\$0	\$0	\$0	\$0	\$0	\$0
Medicare Part D Payments	\$133,109,135	\$0	\$0	\$0	\$0	\$0	\$0	\$0	\$457,777
Mid-Level Practitioner	\$0	\$0	\$0	\$0	\$0	\$0	\$0	\$0	\$0
Medical Supplies/DMEPOS	\$12,807,617	\$62,294,950	\$5,791,372	\$7,131,004	\$5,138	\$0	\$902,687	\$2,723,026	\$213,153
Nursing Facility	\$649,329,836	\$258,409,668	\$56,680	\$148,704	\$0	\$5,565	\$130,521	\$0	\$21,920,194
Nursing Services	\$3,308,279	\$14,341,281	\$0	\$0	\$0	\$0	\$0	\$0	\$0
Nutritionist Services	\$87,058	\$774,648	\$28	\$0	\$0	\$0	\$0	\$0	\$0
Insure Oklahoma ESI Out-of-Pocket	\$0	\$0	\$0	\$0	\$0	\$0	\$0	\$0	\$17,997
Insure Oklahoma ESI Premium	\$0	\$0	\$0	\$0	\$0	\$0	\$0	\$0	\$24,877,217
Other Practitioner	\$0	\$742	\$0	\$7,806	\$0	\$0	\$901	\$0	\$0
Outpatient	\$15,055,591	\$133,163,414	\$139,782,335	\$145,864,060	\$830,060	\$51,191	\$30,780,573	\$407,725	\$3,157,236
Personal Care	\$82,916,844	\$77,289,844	\$32,263	\$5,536	\$0	\$0	\$16,724	\$48,935	\$67
Physician	\$25,202,042	\$147,193,621	\$77,928,648	\$113,397,210	\$400,375	\$56,257	\$16,364,722	\$1,604,371	\$5,924,643
Podiatry	\$219,412	\$965,594	\$227,255	\$150,580	\$0	\$0	\$46,374	\$88	\$999
Prescribed Drugs	\$13,122,942	\$389,868,241	\$266,590,396	\$149,757,365	\$308,332	\$176,936	\$50,322,838	\$3,760,362	\$3,918,987
Psychiatric Services	\$1,050,357	\$21,381,045	\$14,568,433	\$18,434,745	\$6,686	\$10,095	\$731,693	\$336,414	\$375,523

16. Expenditures By Type Of Service By Aid Category (Cont.)

Type of Service	Aged	Blind / Disabled	Expansion	Children & Parents (TANF)	Oklahoma Cares (BCC)	SoonerPlan	Parent Caretaker	TEFRA	Other Total*
Residential Behavior Mgmt	\$0	\$860,673	\$0	\$2,291,289	\$0	\$0	\$0	\$0	\$8,158
Respite Care	\$305,054	\$1,665,171	\$0	\$0	\$0	\$0	\$0	\$0	\$0
Room and Board	\$10,179	\$101,193	\$28,140	\$107,820	\$0	\$0	\$2,553	\$1,848	\$1,575
School-Based Services	\$0	\$1,324,184	\$284	\$5,563,011	\$0	\$0	\$0	\$160,911	\$361
Specialized Foster Care/MR Services	\$55,251	\$2,591,188	\$0	\$0	\$0	\$0	\$0	\$0	\$0
Targeted Case Manager	\$37,670,210	\$72,426,354	\$485	\$2,708,691	\$0	\$0	\$0	\$242	\$2,096
Therapy Services	\$697,417	\$21,731,269	\$183,582	\$16,055,494	\$0	\$0	\$49,486	\$3,352,498	\$17,301
Transportation - Emergency	\$8,815,101	\$36,267,372	\$14,502,201	\$7,600,248	\$5,422	\$1,448	\$1,845,584	\$25,238	\$358,034
Transportation - Non-Emergency	\$8,820,262	\$20,119,228	\$1,652,354	\$837,771	\$226	\$4,616	\$96,383	\$198,190	\$88,804
X-Ray Services	\$1,287,582	\$6,643,184	\$4,277,329	\$1,846,284	\$6,718	\$31	\$1,014,291	\$14,511	\$179,411
Uncategorized Services	\$0	\$13	\$8	-\$92,019	\$0	\$0	\$0	\$0	\$48,453,266
Total	\$1,385,427,652	\$2,378,772,067	\$2,249,857,340	\$2,482,344,104	\$1,720,635	\$434,407	\$457,275,768	\$23,865,483	\$296,649,641
Unduplicated Members Served	65,201	139,000	425,969	858,140	167	20,753	119,633	1,326	65,965
Average Cost Per Member Served	\$21,249	\$17,113	\$5,282	\$2,893	\$10,303	\$21	\$3,822	\$17,998	\$4,497
Unduplicated SoonerCare Enrollees	59,745	128,709	397,070	669,736	67	25,827	106,808	1,239	NA
Average Cost Per Enrolled	\$23,189	\$18,482	\$5,666	\$3,706	\$25,681	\$17	\$4,281	\$19,262	NA

Source: OHCA Financial Service Division, 2025. Claim dollars were extracted from the MMIS claims history file for claims paid within the fiscal year. Financial statement data represents the actual cash expenditures as reported to the Office of State Finance, while MMIS data warehouse expenditure data is net of overpayments and adjustments. Members served figures are the unduplicated counts of members per aid category that received a service. A member may be counted in more than one aid category. Members served based on claims paid within the SFY, dates of service may have been within the prior SFY; members are not necessarily currently enrolled within the reporting SFY. *Other Total includes the OTHER category (Refugees, Phenylketonuria (PKU), Qualifying Individual Group One, Service Limited Medicare Beneficiaries;

Developmental Disabilities Services Division; Soon-to-be Sooners; and Tuberculosis members) and Insure Oklahoma. **NET is included in all categories. "Parent/Caretaker" was included with 'Children & Parents (TANF) in previous years.

17. Expenditures By Type Of Service Percent Of Change

Type of Service	SFY2024 TOTAL			SFY2025 TOTAL			Percent Change		
	Expenditures	Members	Avg Per Member Served	Expenditures	Members	Avg Per Member Served	Expenditures	Members	Avg Per Member Served
Adult Day Care	\$7,599,029	908	\$8,369	\$8,850,461	954	\$9,277	16%	5%	11%
Advanced Practice Nurse	\$693,183	2,542	\$273	\$128,030	775	\$165	-82%	-70%	-39%
ADvantage Home Delivered Meals	\$37,273,069	18,038	\$2,066	\$37,179,526	18,769	\$1,981	0%	4%	-4%
Ambulatory Surgical Services	\$12,256,422	14,065	\$871	\$6,963,939	8,148	\$855	-43%	-42%	-2%
Architectural Modification	\$2,044,611	310	\$6,596	\$1,190,315	243	\$4,898	-42%	-22%	-26%
Audiology Services	\$784,924	2,822	\$278	\$69,955	1,225	\$57	-91%	-57%	-79%
Behavioral Health Services	\$580,152,876	184,663	\$3,142	\$319,526,796	113,438	\$2,817	-45%	-39%	-10%
Capitated Services	\$699,498,493	1,141,450	\$613	\$3,498,711,588	1,106,893	\$3,161	400%	-3%	416%
Chiropractic Services	\$519,904	2,698	\$193	\$224,675	1,318	\$170	-57%	-51%	-12%
Clinic	\$467,476,691	365,398	\$1,279	\$374,660,611	215,320	\$1,740	-20%	-41%	36%
Clinics - OSA Services	\$3,472,056	39,664	\$88	\$938,041	13,160	\$71	-73%	-67%	-19%
Community Mental Health	\$9,379,766	86,893	\$108	\$5,366,835	64,082	\$84	-43%	-26%	-22%
Dental	\$167,536,089	360,134	\$465	\$55,216,716	127,031	\$435	-67%	-65%	-7%
Direct Support	\$327,825,409	5,461	\$60,030	\$397,278,637	6,128	\$64,830	21%	12%	8%
Employee Training Specialist	\$33,396,318	2,242	\$14,896	\$36,566,386	2,309	\$15,836	9%	3%	6%
End Stage Renal Disease	\$13,991,915	3,185	\$4,393	\$11,932,320	2,977	\$4,008	-15%	-7%	-9%
Eye Care and Exams	\$18,734,342	141,276	\$133	\$6,391,761	54,482	\$117	-66%	-61%	-12%

17. Expenditures By Type Of Service Percent Of Change (Cont.)

Type of Service	SFY2024 TOTAL			SFY2025 TOTAL			Percent Change		
	Expenditures	Members	Avg Per Member Served	Expenditures	Members	Avg Per Member Served	Expenditures	Members	Avg Per Member Served
Eyewear	\$6,706,135	93,980	\$71	\$2,053,210	29,970	\$69	-69%	-68%	-4%
Self-Directed Care	\$40,188,082	2,281	\$17,619	\$43,812,718	2,465	\$17,774	9%	8%	1%
Group Home	\$34,822,075	711	\$48,976	\$37,155,560	702	\$52,928	7%	-1%	8%
Home Health	\$33,843,912	4,550	\$7,438	\$30,831,955	2,877	\$10,717	-9%	-37%	44%
Homemaker									
Services	\$210,610	26	\$8,100	\$56,505	5	\$11,301	-73%	-81%	40%
Hospice	\$1,888,125	197	\$9,584	\$1,822,247	191	\$9,541	-3%	-3%	0%
ICF-ID Services	\$108,378,892	1,610	\$67,316	\$104,431,796	1,553	\$67,245	-4%	-4%	0%
Inpatient Services	\$935,287,998	125,683	\$7,442	\$648,612,021	93,660	\$6,925	-31%	-25%	-7%
Laboratory Services	\$36,725,964	306,907	\$120	\$14,747,619	137,748	\$107	-60%	-55%	-11%
Medicare Part A & B (Buy-In)	\$263,101,938	1	\$263,101,938	\$232,058,831	1	\$232,058,831	-12%	0%	-12%
Medicare Part D									
Payments	\$117,460,964	3	\$39,153,655	\$133,566,912	2	\$66,783,456	14%	-33%	71%
Mid-Level Practitioner	(\$46,802)	98	-\$478	\$0	67	\$0	-100%	-32%	-100%
Medical									
Supplie/DMEPOS	\$118,992,055	109,362	\$1,088	\$91,952,825	77,732	\$1,183	-23%	-29%	9%
Nursing Facility	\$826,801,512	18,762	\$44,068	\$930,008,202	19,088	\$48,722	12%	2%	11%
Nursing Services	\$16,263,593	22,529	\$722	\$17,649,559	23,669	\$746	9%	5%	3%
Nutritionist Services	\$889,270	557	\$1,597	\$861,734	576	\$1,496	-3%	3%	-6%
Insure Oklahoma									
ESI Out-of-Pocket	\$10,921	1	\$10,921	\$17,997	1	\$17,997	65%	0%	65%
Insure Oklahoma ESI Premium	\$29,623,462	9,696	\$3,055	\$24,877,217	7,322	\$3,398	-16%	-24%	11%
Other Practitioner	\$12,555	33	\$380	\$9,449	24	\$0	-25%	-27%	-100%
Outpatient Hospital	\$746,750,031	578,271	\$1,291	\$474,650,956	317,052	\$1,497	-36%	-45%	16%

17. Expenditures By Type Of Service Percent Of Change (Cont.)

Type of Service	SFY2024 TOTAL			SFY2025 TOTAL			Percent Change		
	Expenditures	Members	Avg Per Member Served	Expenditures	Members	Avg Per Member Served	Expenditures	Members	Avg Per Member Served
Personal Care	\$129,452,284	20,019	\$6,466	\$160,310,212	21,006	\$7,632	24%	5%	18%
Physician	\$823,670,047	927,467	\$888	\$389,993,664	506,382	\$770	-53%	-45%	-13%
Podiatry	\$3,613,290	15,102	\$239	\$1,613,667	9,807	\$165	-55%	-35%	-31%
Prescribed Drugs	\$1,351,188,311	758,215	\$1,782	\$883,813,925	348,599	\$2,535	-35%	-54%	42%
Psychiatric Services	\$100,101,351	13,026	\$7,685	\$56,980,169	8,244	\$6,912	-43%	-37%	-10%
Residential Behavior Mgmt	\$16,742,708	924	\$18,120	\$3,160,119	353	\$8,952	-81%	-62%	-51%
Respite Care	\$2,092,902	365	\$5,734	\$1,970,225	372	\$5,296	-6%	2%	-8%
Room and Board	\$519,483	728	\$714	\$253,740	437	\$581	-51%	-40%	-19%
School-Based Services	\$5,527,949	9,821	\$563	\$7,048,750	11,320	\$623	28%	15%	11%
Specialized Foster Care/ID	\$2,635,368	117	\$22,525	\$2,646,439	116	\$22,814	0%	-1%	1%
Targeted Case Manager	\$136,242,134	42,669	\$3,193	\$112,808,078	36,709	\$3,073	-17%	-14%	-4%
Therapy Services	\$83,826,907	45,127	\$1,858	\$42,093,856	24,269	\$1,734	-50%	-46%	-7%
Transportation - Emergency	\$80,042,723	117,952	\$679	\$69,579,208	88,508	\$786	-13%	-25%	16%
Transportation - Non-Emergency	\$32,655,971	1,398,741	\$23	\$31,844,632	419,506	\$76	-2%	-70%	225%
X-Ray Services	\$30,996,472	277,567	\$112	\$15,384,227	146,704	\$105	-50%	-47%	-6%
Uncategorized Services	\$205,231,937	2,177	\$94,273	\$48,361,269	14,225	\$3,400	-76%	553%	-96%
Total (Member Specific)	\$8,705,086,223	1,502,934	\$5,792	\$9,378,236,087	1,355,935	\$6,916	8%	-10%	19%

17. Expenditures By Type Of Service Percent Of Change (Cont.)

Non-Member Specific Payments	SFY2024 TOTAL			SFY2025 TOTAL			Percent Change		
	Expenditures	Members	Avg Per Member Served	Expenditures	Members	Avg Per Member Served	Expenditures	Members	Avg Per Member Served
HSP - Indirect Medical Education (IME)	\$40,220,498	-	\$0	\$41,477,075	-	\$0	3%	0%	0%
HSP - Graduate Medical Education	\$5,567,742	-	\$0	\$5,261,363	-	\$0	-6%	0%	0%
HSP - Acute DSH	\$50,548,312	-	\$0	\$43,924,989	-	\$0	-13%	0%	0%
HSP -	\$518,562,832	-	\$0	\$616,878,632	-	\$0	19%	0%	0%
HSP - SHOPP	\$937,421,905	-	\$0	\$1,356,842,447	-	\$0	45%	0%	0%
Transp - ASPAPP	\$11,426,324	-	\$0	\$12,211,616	-	\$0	7%	0%	0%
Behavioral Health Supplemental	\$58,258,178	-	\$0	\$40,018,127	-	\$0	-31%	0%	0%
EHR Incentive	(\$29,403)	-	\$0	\$0	-	\$0	-100%	0%	0%
Capitated Services - GME to Medical	\$0	-	\$0	\$0	-	\$0	0%	0%	0%
Total (Overall)	\$10,327,062,611			\$11,494,850,336			11%		

Source: OHCA Financial Service Division, 2025. Claim dollars were extracted from the MMIS claims history file for claims paid within the fiscal year. Financial statement data represents the actual cash expenditures as reported to the Office of State Finance, while MMIS data warehouse expenditure data is net of overpayments and adjustments. Members served figures are the unduplicated counts of members that received a service. If a member received services from multiple service type providers, they would be counted once for each type of service; the total count is the unduplicated count overall. Members served based on claims paid within the SFY, dates of service may have been within the prior SFY; members are not necessarily currently enrolled within the reporting SFY.

18. Expenditures By Adult And Children

SFY2025	Adult Totals			Children Totals			TOTAL		
Type of Service	Expenditures	Members Served	Avg per Adult	Expenditures	Members Served	Avg per Child ¹	Expenditures	Members Served	Average
Adult Day Care	\$8,850,461	954	\$9,277	\$0	-	\$0	\$8,850,461	954	\$9,277
Advanced Practice Nurse	\$70,308	478	\$147	\$57,722	297	\$194	\$128,030	775	\$165
ADvantage Home	\$37,179,526	18,762	\$1,982	\$0	-	\$0	\$37,179,526	18,762	\$1,982
Ambulatory Surgical Services	\$5,297,767	6,502	\$815	\$1,666,173	1,646	\$1,012	\$6,963,939	8,148	\$855
Architectural Modification	\$1,136,226	222	\$5,118	\$54,089	21	\$2,576	\$1,190,315	243	\$4,898
Audiology Services	\$23,559	576	\$41	\$46,396	649	\$71	\$69,955	1,225	\$57
Behavioral Health Services	\$213,987,673	72,733	\$2,942	\$105,539,123	40,703	\$2,593	\$319,526,796	113,436	\$2,817
Capitated Services	\$1,777,576,693	462,908	\$3,840	\$1,721,134,895	643,984	\$2,673	\$3,498,711,588	1,106,892	\$3,161
Chiropractic Services	\$222,007	1,284	\$173	\$2,668	34	\$78	\$224,675	1,318	\$170
Clinic	\$192,993,579	119,230	\$1,619	\$181,667,032	96,090	\$1,891	\$374,660,611	215,320	\$1,740
Clinics - OSA	\$330,385	3,185	\$104	\$607,656	9,975	\$61	\$938,041	13,160	\$71
Community Mental Health	\$4,224,573	44,613	\$95	\$1,142,262	19,469	\$59	\$5,366,835	64,082	\$84
Dental	\$24,247,341	42,844	\$566	\$30,969,375	84,187	\$368	\$55,216,716	127,031	\$435
Direct Support	\$357,226,935	4,963	\$71,978	\$40,051,702	1,165	\$34,379	\$397,278,637	6,128	\$64,830
Employee Training Specialist	\$35,845,319	2,233	\$16,053	\$721,067	76	\$9,488	\$36,566,386	2,309	\$15,836
End Stage Renal Disease	\$11,981,654	2,966	\$4,040	(\$49,334)	11	-\$4,485	\$11,932,320	2,977	\$4,008
Eye Care and Exams	\$2,028,214	20,418	\$99	\$4,363,547	34,064	\$128	\$6,391,761	54,482	\$117
Eyewear	\$6,048	243	\$25	\$2,047,162	29,727	\$69	\$2,053,210	29,970	\$69
Self-Directed Care	\$43,809,948	2,463	\$17,787	\$2,770	1	\$2,770	\$43,812,718	2,464	\$17,781
Group Home	\$36,105,706	682	\$52,941	\$1,049,855	20	\$52,493	\$37,155,560	702	\$52,928
Home Health	\$4,666,699	2,302	\$2,027	\$26,165,256	575	\$45,505	\$30,831,955	2,877	\$10,717
Homemaker Services	\$56,505	5	\$11,301	\$0	-	\$0	\$56,505	5	\$11,301
Hospice	\$1,670,273	177	\$9,437	\$151,975	14	\$10,855	\$1,822,247	191	\$9,541

18. Expenditures By Adult And Children (Cont.)

SFY2025	Adult Totals			Children Totals			TOTAL		
Type of Service	Expenditures	Members Served	Avg per Adult	Expenditures	Members Served	Avg per Child ¹	Expenditures	Members Served	Average
ICF-ID Services	\$93,814,852	1,434	\$65,422	\$10,616,944	119	\$89,218	\$104,431,796	1,553	\$67,245
Inpatient Services	\$401,769,108	59,715	\$6,728	\$246,842,913	33,945	\$7,272	\$648,612,021	93,660	\$6,925
Laboratory Services	\$10,806,915	89,122	\$121	\$3,940,705	48,626	\$81	\$14,747,619	137,748	\$107
Medicare Part A & B (Buy-In)	\$232,058,831	1	\$232,058,831	\$0	-	\$0	\$232,058,831	1	\$232,058,831
Medicare Part D Payments	\$133,566,912	-	\$0	\$0	-	\$0	\$133,566,912	-	\$0
Mid-Level Practitioner	\$0	4	\$0	\$0	63	\$0	\$0	67	\$0
Medical									
Supplie/DMEPOS	\$57,215,960	57,241	\$1,000	\$34,736,864	20,491	\$1,695	\$91,952,825	77,732	\$1,183
Nursing Facility	\$928,856,330	19,074	\$48,698	\$1,151,872	14	\$82,277	\$930,008,202	19,088	\$48,722
Nursing Services	\$17,678,966	23,655	\$747	(\$29,407)	14	-\$2,101	\$17,649,559	23,669	\$746
Nutritionist Services	\$858,192	569	\$1,508	\$3,541	7	\$506	\$861,734	576	\$1,496
Insure Oklahoma									
ESI Out-of-Pocket	\$17,997	-	\$0	\$0	-	\$0	\$17,997	-	\$0
Insure Oklahoma									
ESI Premium	\$24,877,217	9,696	\$2,566	\$0	-	\$0	\$24,877,217	9,696	\$2,566
Other Practitioner	\$6,931	21	\$330	\$2,517	3	\$839	\$9,449	24	\$394
Outpatient Hospital	\$325,175,975	206,908	\$1,572	\$149,474,981	110,144	\$1,357	\$474,650,956	317,052	\$1,497
Personal Care	\$159,551,315	20,848	\$7,653	\$758,897	157	\$4,834	\$160,310,212	21,005	\$7,632
Physician	\$261,857,305	286,087	\$915	\$128,136,359	220,295	\$582	\$389,993,664	506,382	\$770
Podiatry	\$1,407,713	9,059	\$155	\$205,954	748	\$275	\$1,613,667	9,807	\$165
Prescribed Drugs	\$644,461,074	188,519	\$3,419	\$239,352,851	160,080	\$1,495	\$883,813,925	348,599	\$2,535
Psychiatric Services	\$27,160,430	5,922	\$4,586	\$29,819,739	2,322	\$12,842	\$56,980,169	8,244	\$6,912
Residential Behavior Mgmt	\$0	-	\$0	\$3,160,119	353	\$8,952	\$3,160,119	353	\$8,952
Respite Care	\$1,598,798	310	\$5,157	\$371,427	62	\$5,991	\$1,970,225	372	\$5,296
Room and Board	\$107,274	149	\$720	\$146,466	288	\$509	\$253,740	437	\$581
School-Based									
Services	\$0	-	\$0	\$7,048,750	11,320	\$623	\$7,048,750	11,320	\$623
Specialized Foster Care/ID	\$1,926,194	80	\$24,077	\$720,245	36	\$20,007	\$2,646,439	116	\$22,814

18. Expenditures By Adult And Children (Cont.)

SFY2025	Adult Totals			Children Totals			TOTAL		
Type of Service	Expenditures	Members Served	Avg per Adult	Expenditures	Members Served	Avg per Child ¹	Expenditures	Members Served	Average
Targeted Case									
Manager	\$103,506,710	32,682	\$3,167	\$9,301,367	4,027	\$2,310	\$112,808,078	36,709	\$3,073
Therapy Services	\$6,795,073	6,829	\$995	\$35,298,783	17,440	\$2,024	\$42,093,856	24,269	\$1,734
Transportation -									
Emergency	\$59,009,583	76,105	\$775	\$10,569,625	12,402	\$852	\$69,579,208	88,507	\$786
Transportation - Non-									
Emergency	\$27,581,164	254,809	\$108	\$4,263,468	164,697	\$26	\$31,844,632	419,506	\$76
X-Ray Services	\$13,212,561	107,917	\$122	\$2,171,667	38,787	\$56	\$15,384,227	146,704	\$105
Uncategorized									
Services	\$47,994,351	12,866	\$3,730	\$366,918	1,355	\$271	\$48,361,269	14,221	\$3,401
Total (Member Specific)	\$6,342,411,131	664,086	\$9,551	\$3,035,824,956	691,849	\$4,388	\$9,378,236,087	1,355,935	\$6,916

Source: OHCA Financial Service Division, 2025. Children are under age 21. Claim dollars were extracted from the MMIS claims history file for claims paid within the fiscal year. Financial statement data represents the actual cash expenditures as reported to the Office of State Finance, while MMIS data warehouse expenditure data is net of overpayments and adjustments. Members served figures are the unduplicated counts of members that received a service. If a member received services from multiple service type providers, they would be counted once for each type of service; the total count is the unduplicated count overall. Members served based on claims paid within the SFY, dates of service may have been within the prior SFY; members are not necessarily currently enrolled within the reporting SFY.

19. Expenditures By Type of Service By Benefit Type

Type of Service	SoonerCare Traditional	Expansion	SoonerCare Choice	Insure Oklahoma IP & ESI*	SoonerPlan	SoonerCare Supplemental	HCBS Waivers**	Total
Adult Day Care	\$14,148	\$0	\$0	\$0	\$0	\$0	\$8,836,313	\$8,850,461
Advanced Practice Nurse	\$41,730	\$32,289	\$49,299	\$0	\$0	\$4,712	\$0	\$128,030
ADvantage Home Delivered Meals	\$0	\$0	\$0	\$0	\$0	\$0	\$37,179,526	\$37,179,526
Ambulatory Surgical Services	\$1,552,490	\$1,408,312	\$2,534,358	\$0	\$0	\$1,468,780	\$0	\$6,963,939
Architectural Modification	\$13,347	\$0	\$0	\$0	\$0	\$0	\$1,176,968	\$1,190,315
Audiology Services	\$19,496	\$5,822	\$39,062	\$0	\$0	\$4,721	\$854	\$69,955
Behavioral Health Services	\$129,114,791	\$66,863,751	\$111,176,556	\$0	\$0	\$604,140	\$11,767,558	\$319,526,796
Capitated Services	\$124,280,165	\$1,189,395	\$3,347,788,370	\$0	\$0	\$25,453,658	\$0	\$3,498,711,588
Chiropractic Services	\$28,226	\$115,579	\$66,714	\$0	\$0	\$14,156	\$0	\$224,675
Clinic	\$84,721,451	\$111,614,670	\$163,876,705	-\$351	\$43,809	\$14,385,543	\$18,784	\$374,660,611
Clinics - OSA Services	\$320,514	\$141,894	\$457,224	\$0	\$11,570	\$6,839	\$0	\$938,041
Community Mental Health	\$975,777	\$1,703,272	\$1,498,048	\$0	\$0	\$1,189,738	\$0	\$5,366,835
Dental	\$15,170,878	\$9,503,555	\$24,028,302	\$0	\$0	\$6,107,546	\$406,434	\$55,216,716
Direct Support	\$3,795,517	\$0	\$0	\$0	\$0	\$0	\$393,483,120	\$397,278,637
Employee Training Specialist	\$295,556	\$0	\$0	\$0	\$0	\$0	\$36,270,830	\$36,566,386
End-Stage Renal Disease	\$5,343,323	\$1,231,073	\$2,413,186	\$0	\$586	\$2,932,841	\$11,311	\$11,932,320
Eye Care and Exams	\$1,841,711	\$667,062	\$3,423,300	\$0	\$0	\$459,717	-\$29	\$6,391,761
Eyewear	\$642,369	\$55,361	\$1,350,021	\$0	\$0	\$4,462	\$998	\$2,053,210
Self-Directed Care	\$11,724,302	\$0	\$0	\$0	\$0	\$0	\$32,088,416	\$43,812,718
Group Home	\$503,492	\$0	\$0	\$0	\$0	\$0	\$36,652,069	\$37,155,560
Home Health	\$18,057,400	\$341,530	\$9,236,254	\$0	\$0	\$324,055	\$2,872,716	\$30,831,955
Homemaker Services	\$0	\$0	\$0	\$0	\$0	\$0	\$56,505	\$56,505

19. Expenditures By Type of Service By Benefit Type (Cont.)

Type of Service	SoonerCare Traditional	Expansion	SoonerCare Choice	Insure Oklahoma IP & ESI*	SoonerPlan	SoonerCare Supplemental	HCBS Waivers**	Total
Hospice	\$746,630	\$236,794	\$157,044	\$0	\$0	\$23,457	\$658,322	\$1,822,247
ICF-ID Services	\$50,983,376	\$0	\$39,303	\$0	\$0	\$53,409,117	\$0	\$104,431,796
Inpatient Services	\$323,734,236	\$164,417,757	\$132,217,556	\$0	\$67,574	\$28,167,604	\$7,294	\$648,612,021
Laboratory Services	\$5,793,330	\$3,742,346	\$4,848,629	\$0	\$4,729	\$358,585	\$0	\$14,747,619
Medicare Part A & B (Buy-In) Payments	\$0	\$0	\$0	\$0	\$0	\$232,058,831	\$0	\$232,058,831
Medicare Part D Payments	\$0	\$0	\$0	\$0	\$0	\$133,566,912	\$0	\$133,566,912
Mid-Level Practitioner	\$0	\$0	\$0	\$0	\$0	\$0	\$0	\$0
Medical Supplies/DMEPOS	\$29,203,990	\$5,810,672	\$27,690,031	\$0	\$0	\$12,917,251	\$16,330,881	\$91,952,825
Nursing Facility	\$148,283,037	\$55,274	\$771,376	\$0	\$5,565	\$780,890,493	\$2,458	\$930,008,202
Nursing Services	\$9,639	\$0	\$0	\$0	\$0	\$0	\$17,639,920	\$17,649,559
Nutritionist Services	\$54,023	\$28	\$0	\$0	\$0	\$160,287	\$647,395	\$861,734
Insure Oklahoma ESI Out-of-Pocket	\$0	\$0	\$0	\$17,997	\$0	\$0	\$0	\$17,997
Insure Oklahoma ESI Premium	\$0	\$0	\$0	\$24,877,217	\$0	\$0	\$0	\$24,877,217
Other Practitioner	\$3,265	\$0	\$6,183	\$0	\$0	\$0	\$0	\$9,449
Outpatient Hospital	\$142,734,708	\$141,097,528	\$166,516,261	-\$382	\$51,191	\$24,194,325	\$57,326	\$474,650,956
Personal Care	\$1,917,714	\$32,263	\$2,383,668	\$0	\$0	\$7,074,035	\$148,902,533	\$160,310,212
Physician	\$129,778,330	\$78,486,211	\$136,823,510	\$0	\$55,900	\$42,746,518	\$2,103,195	\$389,993,664
Podiatry	\$497,378	\$225,182	\$434,938	\$0	\$0	\$456,168	\$0	\$1,613,667
Prescribed Drugs	\$240,663,878	\$267,940,024	\$351,484,662	\$0	\$176,936	\$7,219,908	\$16,328,517	\$883,813,925
Psychiatric Services	\$25,009,195	\$14,692,029	\$15,027,112	\$0	\$10,095	\$2,241,319	\$419	\$56,980,169
Residential Behavior Mgmt	\$3,126,686	\$0	\$33,433	\$0	\$0	\$0	\$0	\$3,160,119
Respite Care	\$0	\$0	\$0	\$0	\$0	\$0	\$1,970,225	\$1,970,225
Room and Board	\$102,669	\$28,020	\$80,019	\$0	\$0	\$43,032	\$0	\$253,740
School-Based Services	\$4,723,746	\$645	\$2,324,360	\$0	\$0	\$0	\$0	\$7,048,750

19. Expenditures By Type of Service By Benefit Type (Cont.)

Type of Service	SoonerCare Traditional	Expansion	SoonerCare Choice	Insure Oklahoma IP & ESI*	SoonerPlan	SoonerCare Supplemental	HCBS Waivers**	Total
Specialized Foster Care/ID Services	\$0	\$0	\$0	\$0	\$0	\$0	\$2,646,439	\$2,646,439
Targeted Case Manager	\$17,119,060	\$485	\$200,625	\$0	\$0	\$22,989,082	\$72,498,826	\$112,808,078
Therapy Services	\$12,902,839	\$198,885	\$22,621,881	\$0	\$0	\$424,616	\$5,945,635	\$42,093,856
Transportation - Emergency	\$15,771,931	\$14,384,980	\$13,492,489	-\$317	\$1,448	\$15,463,714	\$10,464,962	\$69,579,208
Transportation - Non-Emergency	\$0	\$0	\$13,713,317	\$0	\$0	\$18,131,315	\$0	\$31,844,632
X-Ray Services	\$4,887,912	\$4,319,168	\$4,675,355	-\$53	\$31	\$1,501,813	\$0	\$15,384,227
Uncategorized Services	\$15,243,018	\$8	\$3,719,656	\$0	\$0	\$817,131	\$28,581,456	\$48,361,269
Total	\$1,571,747,277	\$890,541,863	\$4,567,198,803	\$24,894,112	\$429,434	\$1,437,816,423	\$885,608,176	\$9,378,236,087
Unduplicated Members Served	448,204	215,930	234,688	7,430	955	113,867	34,466	1,355,935
Average Cost Per Member Served	\$3,507	\$4,124	\$19,461	\$3,350	\$450	\$12,627	\$25,695	\$6,916
Unduplicated Members Enrolled	NA	397,070	177,146	7,967	25,827	140,555	34,743	1,311,729
Average Per Enrolled	NA	\$2,243	\$25,782	\$3,125	\$17	\$10,230	\$25,490	\$7,150

Source: OHCA Financial Service Division, 2025. Claim dollars were extracted from the MMIS claims history file for claims paid within the fiscal year. Financial statement data represents the actual cash expenditures as reported to the Office of State Finance, while MMIS data warehouse expenditure data is net of overpayments and adjustments. Members served figures are the unduplicated counts of members per benefit plan that received a service. A member may be counted in more than one benefit plan; the total count is the unduplicated count overall. Members served based on claims paid within the SFY, dates of service may have been within the prior SFY; members are not necessarily currently enrolled within the reporting SFY.

In order to provide a more accurate average cost per member, non-member specific supplemental payments have been removed from the above. Non-member specific payments include \$937,421,905 in SHOPP payments; \$38,078,374 in Hospital Supplemental payments; \$576,821,011 in UPL payments; \$263,101,938 in Medicare Part A & B (Buy-In) payments; \$117,316,630 in Medicare Part D (clawback) payments; \$21,390,637 NH Services payments; \$30,387,873 in Insure Oklahoma ESI premiums; \$10,921 in Insure Oklahoma ESI Out-Of Pocket payments; \$58,258,178 in Outpatient Behavioral Health Supplemental payments; \$11,426,324 in ASPAPP payments \$2,991,178 in SoonerExcel payments;

19. Expenditures By Type of Service By Benefit Type (Cont.)

\$9,989,345 in Health Access Network payments; \$32,655,971 in NET payments; \$5,666,090 in ICF/MR payments; \$13,494,623 in Self-Directed Care; \$175,000,000 in State Only Dollars for Senate Bill 32X and \$32,949,271 in non-member specific provider adjustments.

*Insure Oklahoma IP & ESI includes Insure Oklahoma ESI Out-of-Pocket and Insure Oklahoma ESI Premium payments. **Home & Community Based Services Waivers expenditures include all services paid to waiver members. HCBS Waiver members may receive services paid through Title XIX funds. ***NET is only included in Choice and Supplemental figures.

20. Expenditures By Type Of Service By Aid Category By Children Under 21

Type of Service	Blind/ Disabled/ TEFRA	Expansion	State Custody	Postpartum	CHIP	Children & Parents (TANF)	Other Aid Categories*
Adult Day Care	\$0	\$0	\$0		\$0	\$0	\$0
Advanced Practice Nurse	\$20,939	\$2,277	\$1,297	\$0	\$2,986	\$29,991	\$233
Ambulatory Surgical Services	\$140,858	\$12,611	\$22,088	\$293	\$215,974	\$1,255,671	\$18,679
Architectural Modification	\$54,089	\$0	\$0	\$0	\$0	\$0	\$0
Audiology Services	\$6,025	\$419	\$335	\$0	\$3,885	\$35,597	\$135
Behavioral Health Services	\$19,729,857	\$3,163,889	\$2,233,256	\$185,474	\$13,183,628	\$65,227,392	\$1,815,626
Capitated Services	\$734,602	\$70,022,243	\$68,284,461	\$5,184,519	\$210,019,944	\$1,206,937,257	\$159,951,871
Chiropractic Services	\$0	\$594	\$0	\$0	\$236	\$1,740	\$98
Clinic	\$36,912,843	\$4,747,274	\$2,687,912	\$278,630	\$21,503,681	\$112,986,843	\$2,549,849
Clinics - OSA Services	\$45,009	\$31,225	\$8,919	\$3,188	\$70,924	\$427,489	\$20,901
Community Mental Health	\$291,176	\$66,185	\$37,191	\$385	\$137,611	\$595,054	\$14,659
Dental	\$3,703,200	\$694,183	\$920,542	\$49,417	\$4,831,400	\$20,442,169	\$328,466
Direct Support	\$16,775,070	\$0	\$23,276,632	\$0	\$0	\$0	\$0
Employee Training Specialist	\$691,514	\$0	\$29,553	\$0	\$0	\$0	\$0
End Stage Renal Disease	-\$39,225	-\$12,961	\$0	\$0	\$0	\$2,853	\$0
Eye Care and Exams	\$483,576	\$107,422	\$62,409	\$6,408	\$731,960	\$2,916,271	\$55,501
Eyewear	\$280,084	\$39,974	\$28,650	\$3,154	\$327,009	\$1,346,330	\$21,960
Other Practitioner	\$127	\$0	\$0	\$0	\$0	\$2,390	\$0
Group Home	\$1,049,855	\$0	\$0	\$0	\$0	\$0	\$0
Home Health	\$23,752,895	\$30,046	\$314,039	\$0	\$169,130	\$1,865,772	\$33,375
Homemaker Services			\$0				\$0
Hospice	\$125,261	\$0	\$0	\$0	\$0	\$26,201	\$513
ICF-ID Services	-\$6,970,891	\$0	\$18,253,688	\$0	\$3,083	-\$684,609	\$15,673

20. Expenditures By Type Of Service By Aid Category By Children Under 21 (Cont.)

Type of Service	Blind/ Disabled/ TEFRA	Expansion	State Custody	Postpartum	CHIP	Children & Parents (TANF)	Other Aid Categories*
Inpatient Services	\$70,157,959	\$3,233,173	\$44,980,047	\$180,586	\$10,338,728	\$116,146,733	\$1,805,687
Laboratory Services	\$563,714	\$170,919	\$94,436	\$15,176	\$388,059	\$2,572,474	\$135,926
Mid-Level Practitioner	\$0	\$0	\$135	\$0	-\$197	\$62	\$0
Medical Supplie/DMEPOS	\$27,200,390	\$225,147	\$766,795	\$1,365	\$1,140,119	\$5,322,621	\$80,427
Nursing Facility	\$1,063,233	\$0	\$69,965	\$0	\$0	\$18,673	\$0
Nursing Services	-\$29,407	\$0	\$0	\$0	\$0	\$0	\$0
Nutritionist Services	\$3,541	\$0	\$0	\$0	\$0	\$0	\$0
Outpatient Hospital	\$15,303,427	\$5,609,497	\$2,228,441	\$401,123	\$19,781,469	\$103,531,777	\$2,619,248
Personal Care	\$753,053	\$0	\$1,310	\$0	\$852	\$3,682	\$0
Physician	\$30,403,532	\$2,689,358	\$2,082,735	\$178,448	\$12,556,471	\$78,595,554	\$1,630,262
Podiatry	\$52,726	\$4,307	\$7,523	\$527	\$32,285	\$107,612	\$975
Prescribed Drugs	\$88,443,757	\$8,153,419	\$5,736,732	\$297,722	\$27,127,148	\$106,368,156	\$3,225,917
Psychiatric Services	\$8,677,578	\$548,014	\$3,020,247	\$2,851	\$2,816,574	\$14,454,429	\$300,046
Residential Behavior Mgmt	-\$361,723	\$0	\$4,825,209	\$0	-\$549	-\$1,310,975	\$8,158
Respite Care	\$128,338	\$0	\$243,089	\$0	\$0	\$0	\$0
Room and Board	\$37,071	\$108	\$54	\$432	\$5,466	\$101,760	\$1,575
School-Based Services	\$1,460,750	\$284	\$190,387	\$0	\$748,157	\$4,648,811	\$361
Specialized Foster Care/ID	\$193,711	\$0	\$526,535	\$0	\$0	\$0	\$0
Targeted Case Manager	\$4,349,961	\$485	\$5,280,887	\$0	\$67,327	-\$399,389	\$2,096
Therapy Services	\$19,051,462	\$55,322	\$258,252	\$0	\$2,075,513	\$13,840,636	\$17,599
Transportation - Emergency	\$2,319,470	\$424,830	\$684,717	\$14,646	\$1,069,671	\$5,879,119	\$177,171
Transportation - Non- Emergency	\$3,227,052	\$128,917	\$34,964	\$2,219	\$120,045	\$686,680	\$63,592

21. Expenditures By Type Of Service By Aid Category By Children Under 21 (Cont.)

Type of Service	Blind/ Disabled/ TEFRA	Expansion	State Custody	Postpartum	CHIP	Children & Parents (TANF)	Other Aid Categories*
X-Ray Services	\$439,227	\$162,447	\$57,250	\$9,730	\$300,312	\$1,121,197	\$81,504
Uncategorized Services	\$0	\$0	\$768	\$0	\$216	\$1,070	\$364,863
Total	\$371,225,687	\$100,311,605	\$187,251,451	\$6,816,291	\$329,769,115	\$1,865,105,094	\$175,342,943
Unduplicated Members Served	22,394	39,428	14,725	3,117	179,127	598,260	30,516
Average Cost Per Member Served	\$16,577	\$2,544	\$12,717	\$2,187	\$1,841	\$3,118	\$5,746

Source: OHCA Financial Service Division, 2025. Children are under age 21. Claim dollars were extracted from the MMIS claims history file for claims paid within the fiscal year. Financial statement data represents the actual cash expenditures as reported to the Office of State Finance, while MMIS data warehouse expenditure data is net of overpayments and adjustments. Members served figures are the unduplicated counts of members per aid category that received a service. A member may be counted in more than one aid category. Members served based on claims paid within the SFY, dates of service may have been within the prior SFY; members are not necessarily currently enrolled within the reporting SFY.

*Other aid categories includes Oklahoma Cares (Breast & Cervical Cancer), SoonerPlan, Soon-to-be-Sooners and Insure Oklahoma members younger than age 21.

21. Expenditures For Home & Community Based Waivers

Type of Service	Total	ADvantage	Community	Homeward Bound	In-Home Support	Living Choice	Medically Fragile
Adult Day Care	\$8,836,313	\$1,776,048	\$3,430,400	\$63,436	\$3,566,430	\$0	\$0
ADvantage Home Delivered							
Meals	\$37,179,526	\$37,095,574	\$0	\$0	\$0	\$64,464	\$19,487
Ambulatory Surgical Services	\$0	\$0	\$0	\$0	\$0	\$0	\$0
Architectural Modification	\$1,176,968	\$648,808	\$286,673	\$64,494	\$143,403	\$4,449	\$29,141
Audiology Services	\$854	\$0	\$676	\$0	\$179	\$0	\$0
Behavioral Health	\$11,767,558	\$0	\$10,115,000	\$713,019	\$939,539	\$0	\$0
Clinic	\$18,784	\$15,759	\$1,262	\$884	\$878	\$0	\$0
Community Mental Health	\$0	\$0	\$0	\$0	\$0	\$0	\$0
Dental	\$406,434	\$0	\$279,602	\$64,927	\$61,905	\$0	\$0
Direct Support	\$393,483,120	\$0	\$258,231,111	\$81,367,726	\$53,884,283	\$0	\$0
Employee Training Specialist	\$36,270,830	\$0	\$28,426,307	\$1,887,001	\$5,957,522	\$0	\$0
End Stage Renal Disease	\$11,311	\$11,311	\$0	\$0	\$0	\$0	\$0
Psychiatric Services	\$419	\$0	\$419	\$0	\$0	\$0	\$0
Eye Care and Exam Services	-\$29	-\$298	\$167	\$0	\$102	\$0	\$0
Eyewear Services	\$998	\$0	\$534	\$0	\$465	\$0	\$0
Self-Directed Care	\$32,088,416	\$31,218,162	\$0	\$0	\$0	\$0	\$870,254
Group Home	\$36,652,069	\$0	\$36,652,069	\$0	\$0	\$0	\$0
Home Health (HH) Services	\$2,872,716	\$0	\$0	\$0	\$0	\$0	\$2,872,716
Homemaker Services	\$56,505	\$0	\$52,105	\$0	\$4,400	\$0	\$0
Hospice	\$658,322	\$658,322	\$0	\$0	\$0	\$0	\$0
Inpatient Services	\$7,294	\$6,131	\$1,163	\$0	\$0	\$0	\$0
Laboratory Services	\$0	\$0	\$0	\$0	\$0	\$0	\$0
Medicare Part A & B (Buy-In)							
Payments	\$0	\$0	\$0	\$0	\$0	\$0	\$0
Medicare Part D Payments	\$0	\$0	\$0	\$0	\$0	\$0	\$0
Medical Supplies/DMEPOS	\$16,330,881	\$13,910,156	\$1,148,705	\$217,356	\$972,982	\$35,215	\$46,467
Nursing Facility	\$2,458	\$2,458	\$0	\$0	\$0	\$0	\$0
Nursing Services	\$17,639,920	\$6,058,801	\$4,238,803	\$1,072,658	\$0	\$13,088	\$6,256,569
Nutritionist Services	\$647,395	\$0	\$537,117	\$102,525	\$7,753	\$0	\$0
Outpatient	\$57,326	\$46,485	\$4,252	\$45	\$6,544	\$0	\$0

22. Expenditures For Home & Community Based Waivers (Cont.)

Type of Service	Total	ADvantage	Community	Homeward Bound	In-Home Support	Living Choice	Medically Fragile
Personal Care	\$148,902,533	\$147,441,281	\$0	\$0	\$0	\$1,031,136	\$430,116
Physician	\$2,103,195	\$1,224	\$1,644,543	\$389,118	\$68,309	\$0	\$0
Podiatry	\$0	\$0	\$0	\$0	\$0	\$0	\$0
Prescribed Drugs	\$16,328,517	\$11,751,931	\$3,171,444	\$75,917	\$1,089,831	\$56,487	\$182,907
Respite Care	\$1,970,225	\$414,987	\$1,438,108	\$24,034	\$88,047	\$0	\$5,049
Specialized Foster Care/MR Services	\$2,646,439	\$0	\$2,593,217	\$53,222	\$0	\$0	\$0
Targeted Case Manager	\$72,498,826	\$71,832,262	\$0	\$0	\$0	\$317,409	\$349,155
Therapy Services	\$5,945,635	\$1,229	\$4,609,194	\$580,226	\$750,546	\$0	\$4,439
Transportation Services	\$10,464,962	\$446	\$7,671,702	\$1,455,304	\$1,337,511	\$0	\$0
X-Ray Services	\$0	\$0	\$0	\$0	\$0	\$0	\$0
Uncategorized Services	\$28,581,456	\$11,856,845	\$0	\$0	\$16,548,667	\$37,930	\$138,014
Total	\$885,608,176	\$334,747,925	\$364,534,569	\$88,131,892	\$85,429,298	\$1,560,177	\$11,204,314
Served	34,732	26,667	3,648	445	3,721	125	126
Average Cost Per Member Served	\$25,498	\$12,553	\$99,927	\$198,049	\$22,959	\$12,481	\$88,923

Source: OHCA Financial Service Division, 2025. Claim dollars were extracted from the MMIS claims history file for claims paid within the fiscal year. Financial statement data represents the actual cash expenditures as reported to the Office of State Finance, while MMIS data warehouse expenditure data is net of overpayments and adjustments. Members served figures are the unduplicated counts of members that received a service. If a member received services from multiple service type providers, they would be counted once for each type of service; the total count is the unduplicated count overall. Members served based on claims paid within the SFY, dates of service may have been within the prior SFY; members are not necessarily currently enrolled within the reporting SFY. Services above are all services paid with HCBS waiver funds. Members may also receive services paid through Title XIX funds.

22. Expenditures For Behavioral Health Services

All Ages			
Type of Service	Expenditures ¹	Members Served ²	Avg per Member Served
Inpatient (Acute - General)	\$9,992,391	3,012	\$3,318
Inpatient (Acute - Freestanding)	\$40,119,404	4,700	\$8,536
Psychiatric Residential Treatment Facility (PRTF)	\$4,759,850	238	\$19,999
Outpatient	\$275,685,287	79,302	\$3,476
Psychologist	\$7,927,264	9,573	\$828
Psychiatrist	\$5,325,454	14,640	\$364
Residential Behavior Mgmt Services (Group)	\$3,207,727	330	\$9,720
Residential Behavior Mgmt Services (TFC)	\$483,718	22	\$21,987
SMI/SED Case Management	\$2,562,270	10,328	\$248
Other OP Behavioral Hlth Services	\$10,202,960	2,553	\$3,996
Psychotropic Drugs ³	\$148,996,561	232,420	\$641
Total	\$509,262,887	102,929	\$4,948
Children Younger than Age 21			
Type of Service	Expenditures ¹	Members Served ²	Avg per Member Served
Inpatient (Acute - General)	\$1,324,021	504	\$2,627
Inpatient (Acute - Freestanding)	\$19,950,864	1,865	\$10,698
Psychiatric Residential Treatment Facility (PRTF)	\$4,759,850	238	\$19,999
Outpatient	\$96,679,281	32,059	\$3,016
Psychologist	\$3,666,439	5,067	\$724
Psychiatrist	\$1,825,952	4,098	\$446
Residential Behavior Mgmt Services (Group)	\$3,207,727	330	\$9,720
Residential Behavior Mgmt Services (TFC)	\$483,718	22	\$21,987
SMI/SED Case Management	\$1,494,237	5,449	\$274
Other OP Behavioral Hlth Services	\$1,796,056	409	\$4,391
Psychotropic Drugs ³	\$47,273,956	72,822	\$649
Total	\$182,462,099	40,823	\$4,470

23. Expenditures For Behavioral Health Services (Cont.)

Adults Ages 21 and Older			
Type of Service	Expenditures ¹	Members Served ²	Avg per Member Served
Inpatient (Acute - General)	\$8,668,371	2,508	\$3,456
Inpatient (Acute - Freestanding)	\$20,168,540	2,835	\$7,114
Psychiatric Residential Treatment Facility (PRTF)	\$0	-	\$0
Outpatient	\$179,006,007	47,243	\$3,789
Psychologist	\$4,260,826	4,506	\$946
Psychiatrist	\$3,499,502	10,542	\$332
Residential Behavior Mgmt Services (Group)	\$0	-	\$0
Residential Behavior Mgmt Services (TFC)	\$0	-	\$0
SMI/SED Case Management	\$1,068,034	4,879	\$219
Other OP Behavioral Hlth Services	\$8,406,904	2,144	\$3,921
Psychotropic Drugs ³	\$101,722,605	159,598	\$637
Total	\$326,800,788	62,106	\$5,262

Source: OHCA Financial Service Division, 2025. Claim dollars were extracted from the MMIS claims history file for claims paid within the fiscal year. Financial statement data represents the actual cash expenditures as reported to the Office of State Finance, while MMIS data warehouse expenditure data is net of overpayments and adjustments. Members served figures are the unduplicated counts of members that received a service. If a member received services from multiple service type providers, they would be counted once for each type of service; the total count is the unduplicated count overall. Members served based on claims paid within the SFY, dates of service may have been within the prior SFY; members are not necessarily currently enrolled within the reporting SFY.

1. Categories reported above do not include all potential expenditures/costs related to behavioral health diagnosis. Physician, emergency room care, etc. are not included in any of the above figures.
2. Member Served figures are the unduplicated counts of members that received a service. If a member received services from multiple service type providers, they would be counted once for each type of service; the total count is the unduplicated count overall.
3. Prescription claims are not coded with diagnosis information and drugs used to treat behavioral health conditions may be used for some physical health conditions as well. This figure includes all uses of the drugs included within the behavioral health categories.

23. Long-Term Care

Nursing Facilities Only	Bed Days
SoonerCare Funded Bed Days	4,392,540
Total Occupied Bed Days	6,179,604
Total Licensed Bed days	9,672,247
SoonerCare % of Occupied Bed Days	71.1%
Occupancy Rate*	63.9%

*Occupancy rate is unadjusted for semiprivate rooms rented privately, and for hospital and therapeutic leave days.

Facility	Unduplicated Members	Bed Days	Reimbursement	Average Per Member Served	Average Per Day
Nursing Facilities *	18,066	4,392,540	\$920,909,234	\$50,975	\$210
ICF/IDs (ALL)	1,579	495,143	\$109,663,353	\$69,451	\$221
ICF/IDs (Private)	1,504	475,912	\$88,574,094	\$58,892	\$186
ICF/IDs (Public)**	75	19,231	\$21,089,259	\$281,190	\$1,097

ICFs/ID are Intermediate Care Facilities for the Intellectually Disabled. *The above numbers do not include the patient liability that the member pays to the nursing facility (avg per day for NF's \$40.17, for Private ICF/IID's \$19.96 and for Public ICF/IID's \$6.27). ** This does not include Crossover claims paid to nursing facilities of \$9,100,884. This would add 1,666 additional unduplicated members and 162,191 days.

24. SoonerExcel Incentive Program

SoonerExcel Incentive Program	SFY 2025 Payments I
Emergency Department Utilization -based on emergency department utilization of panel members	\$1,000,000
Breast and Cervical Cancer Screenings -based on breast & cervical cancer screenings of panel members	\$0
Behavioral Health Screenings -based on Behavioral Health screenings of panel members	\$750,000
Inpatient Admits/Visits -based on inpatient admits/visits to SoonerCare Choice members	\$0
EPSDT & 4th DTaP- Well Child Checks -based on meeting the EPSDT screening compliance rate and 4th DTaP administration	\$0
Diabetic Control -based on monitoring and control of diabetes in SoonerCare Choice members	\$750,000
Obesity -based on upon the CMS Core Set measure WCC-CH of SoonerCare Choice members	\$500,000
Total	\$3,000,000

Source: OHCA Financial Service Division, 2025. SFY2025 payments are an estimate, at time of reporting SFY2025 4th quarter payments had not been calculated. The Early and Periodic Screening, Diagnostic, and Treatment benefit provides health care services to children under age 21.

25. Hospital Expenditures By Type

Types of Hospital Payments	SFY24	SFY25
Inpatient - Acute and Critical Access	\$745,246,052	\$458,096,485
Inpatient Rehabilitation - Freestanding	\$21,032,302	\$28,653,566
Inpatient - Indian Health Services	\$60,014,640	\$63,192,205
Inpatient - Long Term Acute Care (LTAC) Children's	\$78,166,688	\$68,551,143
Inpatient Behavioral Health - Freestanding	\$72,360,603	\$42,029,967
Psychiatric Residential Treatment Facilities ¹	\$13,695,102	\$8,871,684
Outpatient Services	\$728,451,348	\$454,857,916
Medicare Crossovers	\$42,150,086	\$43,183,748
Hospital Supplemental Payments	\$518,562,832	\$515,283,067
Electronic Health Records (EHR) Incentive Payments	\$0	\$0
Supplemental Hospital Offset Payment Program ³	\$937,421,905	\$1,356,842,447
Indirect Medical Education (IME)	\$40,220,498	\$41,427,113
Graduate Medical Education (GME)	\$5,567,742	\$5,261,363
Disproportionate Share Hospitals ²	\$47,275,065	\$40,564,341
Total	\$3,310,164,863	\$3,126,815,044

Source: OHCA Financial Service Division, 2025. 1. Includes only outpatient services performed at a hospital. 2. EHR incentive payments to hospitals only, excludes other provider types which may have received EHR payments such as physicians.

26. OHCA Provider Network

Provider Types	Provider Network
Adult Day Care	38
Advance Practice Nurse	8,285
Advantage Home Delivery Meal	18
Ambulatory Surgical Center (ASC)	62
Anesthesiology Assistant	73
Audiologist	174
Board Certified Behavior Analyst	3788
Capitation Provider - IHS (Indian Health Services) Case Manager	84
Case Manager	69
Certified Community Behavioral Health Centers (CCBHC)	137
Certified Registered Nurse Anesthetist (CRNA)	2221
Children's Psychiatric Specialty	2
Chiropractor	158
Clinic - Early and Periodic Screening, Diagnosis, and Treatment (EPSDT)	2
Clinic - Family Planning Clinic	4
Clinic - Federally Qualified Health Clinic (FQHC)	193
Clinic - Group	8602
Clinic - Native American	124
Clinic - Rural Health	195
Clinic - Speech/Hearing	62
Clinic - Tuberculosis	2
Community Mental Health Center (CMHC)	142
County/City Health Department	5
DDSD (Developmental Disability Service Division) - Architectural Modification	24
DDSD (Developmental Disability Service Division) - Community Transition Services	47
DDSD (Developmental Disability Service Division) - Employee Training Specialist	82
DDSD (Developmental Disability Service Division) - Group Home	41
DDSD (Developmental Disability Service Division) - Homemaker Services	80
DDSD (Developmental Disability Service Division) - Volunteer Transportation Provider	111
DDSD (Developmental Disability Service Division) - Waiver Behavioral Health Provider	312
Dentist	1773

27. OHCA Provider Network (Cont.)

Provider Types	Provider Network
Developmental - Behavioral Health Pediatrics	10
Diabetes Educator	25
Dietitian	371
Direct Support Services	242
DME (Durable Medical Equipment)/Medical Supply Dealer	1,007
Doula Services	51
End-Stage Renal Disease Clinic	113
Extended Care and Skilled Nursing Facilities	295
Extended Care Facility - Facility Based Respite Care	99
Extended Care Facility - ICF/MR	100
General Dental Anesthesia	10
General Dentist with Orthodontic Privileges	6
Genetic Counselor	20
Home Health Agency	146
Hospice	81
Hospital - Acute Care	942
Hospital - Critical Access	150
Hospital - Native American	18
Hospital - Psychiatric	54
Hospital - Resident Treatment Center	17
ITU Pharmacist	2
Laboratory	168
Lactation Consultant	78
Licensed Behavioral Health Professional	5003
Licensure Candidates	1,801
Maternal/Child Health LCSW	5
Medically Supervised Withdrawal Management	1
Mobile and Portable Dental Treatment	3
Nursing Agency - Non-Skilled	23
Nursing Agency - Skilled	103
Optician	75

27. OHCA Provider Network (Cont.)

Provider Types	Provider Network
Optometrist	781
Organized Health Care Delivery System	1
Outpatient Behavioral Health Agency	457
Outpatient Behavioral Health Agency - DMHSAS Contracted	34
Para Professional	7842
Partial Hospitalization	18
Personal Care Services	4955
Pharmacist	7
Pharmacy	1310
Pharmacy Group	139
Physician - Allergist	93
Physician - Anesthesiologist	1,874
Physician Assistant	2,732
Physician - Cardiologist	778
Physician - General/Family Medicine	3,868
Physician - General Pediatrician	2,921
Physician - General Surgeon	1,117
Physician - Internist	3,706
Physician - Obstetrician/Gynecologist	1,354
Physician - Other Specialist	12,129
Physician - Pediatric Specialist	3,593
Physician - Radiologist	2,634
Physician - Resident in Training	496
Program for Assertive Community Treatment (PACT)	15
Psychiatric Residential Treatment Facility (PRTF)	70
Psychologist	440
Public Health Nurse - Native American	121
Registered Nurse	11
Residential Behavior Management Services (RBMS)	23
Respite Care	160
Room and Board	14

27. OHCA Provider Network (Cont.)

Provider Types	Provider Network
School Based Para Professional	75
School Corporation	140
Specialized Foster Care/MR	106
Therapist - Occupational	1263
Therapist - Physical	1,902
Therapist - Speech/Hearing	1712
Transportation Provider	647
X-Ray Clinic	74
Total Provider Network [Unduplicated]	93,626

Provider Network is providers who contracted to provide health care services by locations, programs, types, and specialties. Providers are being counted multiple times if they have multiple locations, programs, types, and or specialties.