

**Community Based Services**

Providing intake and probation in 73 counties, custody and parole services in all 77 counties.

		<b>7,411</b>	<b>2,098</b>	<b>1,503</b>	<b>538</b>
		Referrals Received	Youth in Detention	Youth in Supervision & Probation	Youth in Custody
<b>AGE</b>	Under 14	1,282	163	266	11
	14 years old	1,069	251	213	30
	15 years old	1,555	458	301	47
	16 years old	1,622	547	295	64
	17 years old	1,769	656	395	110
	18 years old	111	23	64	11
	18+ years old	3	0	1	1
<b>GENDER</b>	Female	2,101	463	380	44
	Male	5,310	1,635	1,123	225
<b>RACE</b>	Black	1,744	684	170	72
	White	3,405	787	826	109
	Hispanic	708	211	133	33
	Other Race	161	416	374	55
<b>CRIME</b>	Warrants	187	669	10	430
	Status Offenses	889	59	140	216
	Misdemeanors	3,275	1,053	1,588	187
	Felony	3,055	1,828	1,130	356

**3,094**  
 Intakes Completed

**1,203**  
 Decline to File

**309**  
 Informal Adjustments

**551**  
 Deferred Filings

**\$113,386.33**  
 Restitution Collected

**248**  
 Youth Diverted to Community Programs

**9,732**  
 Training Hours Earned

**11**  
 Tribal Liaisons

**455**  
 Group Home Residents

**167 Days**  
 Avg. Length of Stay in Group Homes

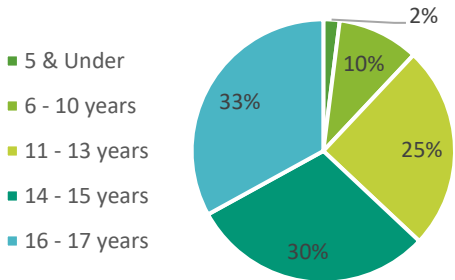
# Standards for Prevention & System Improvement

Monitors and supports quality community-based prevention, treatment, and reintegration services for youth.

**42,087**

## Shelter Nights\*

\*OJA contracts with 21 youth shelters across the state. Children served may be in DHS custody, OJA custody, or from within the community.



**397 Hours**

## Training, Technical Assistance, and Community Linkages

**442 Events**

## Training, Technical Assistance, and Community Linkages

**3**

## Deinstitutionalization of Status Offender Violations

**0**

## Separation Violations

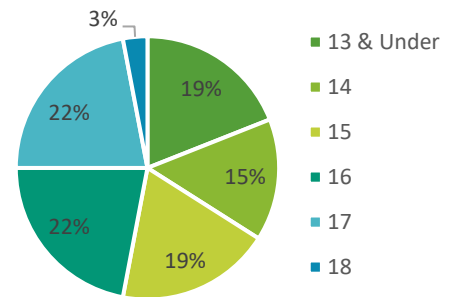
**3**

## Jail Removal Violations

**1,091**

## Children & Families Served by the First Time Offender Program\*

\*A 14-hour course which requires youth to attend with their caregiver.



**28,001\***

## Students Served by Botvin LifeSkills Training

\*Duplicated count

**735**

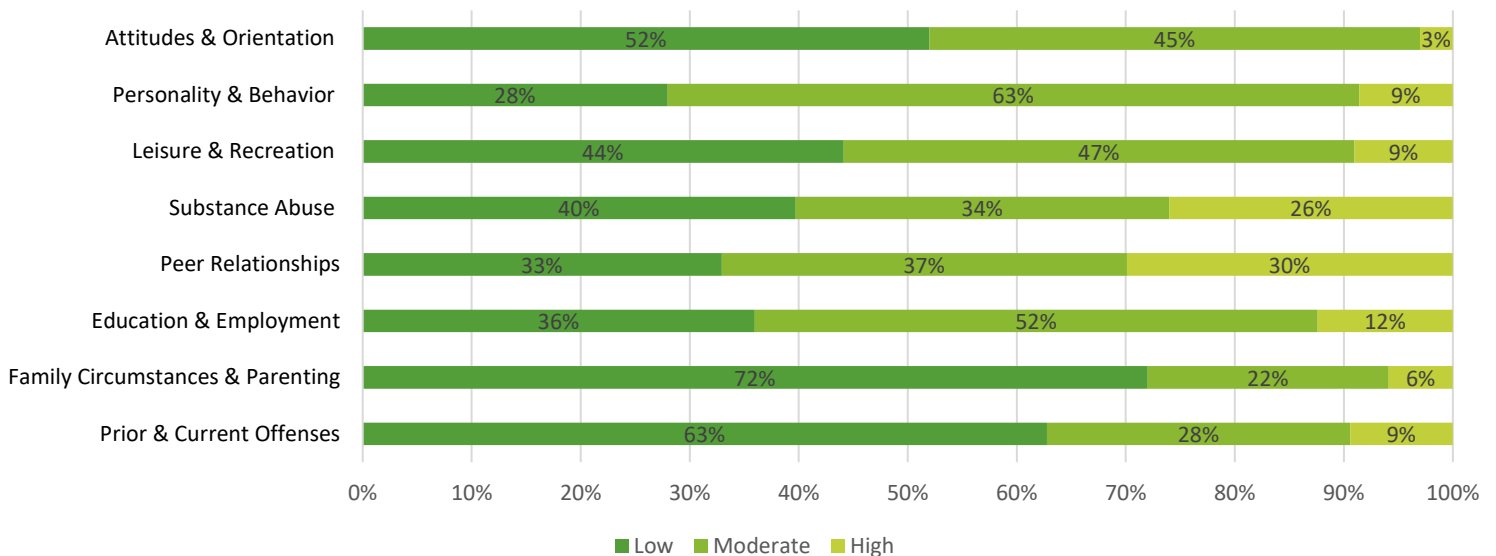
## System Involved Children Served through Community At-Risk Services\*

\*Evidence-based outpatient therapy

**3,064**

## Youth Level of Service /Case Management Inventory™ (YLS/CMI) Assessments Completed\*

\*YLS/CMI is an evidence-based instrument that measures risk and need factors in 8 domains providing an overall score that indicates a youth's risk for recidivism. The levels of degree range from low (would likely not contribute) to very high (would likely contribute).



# Residential Placement Support

Responsible for the care of children in secure care settings operated by OJA.

<b>79</b> Unique Residents	<b>37</b> Residents Paroled	<b>5</b> Residents Bridged	<b>1,767</b> Family Visits	<b>61.76%</b> PbS Score
-------------------------------	--------------------------------	-------------------------------	-------------------------------	----------------------------

## Education Data

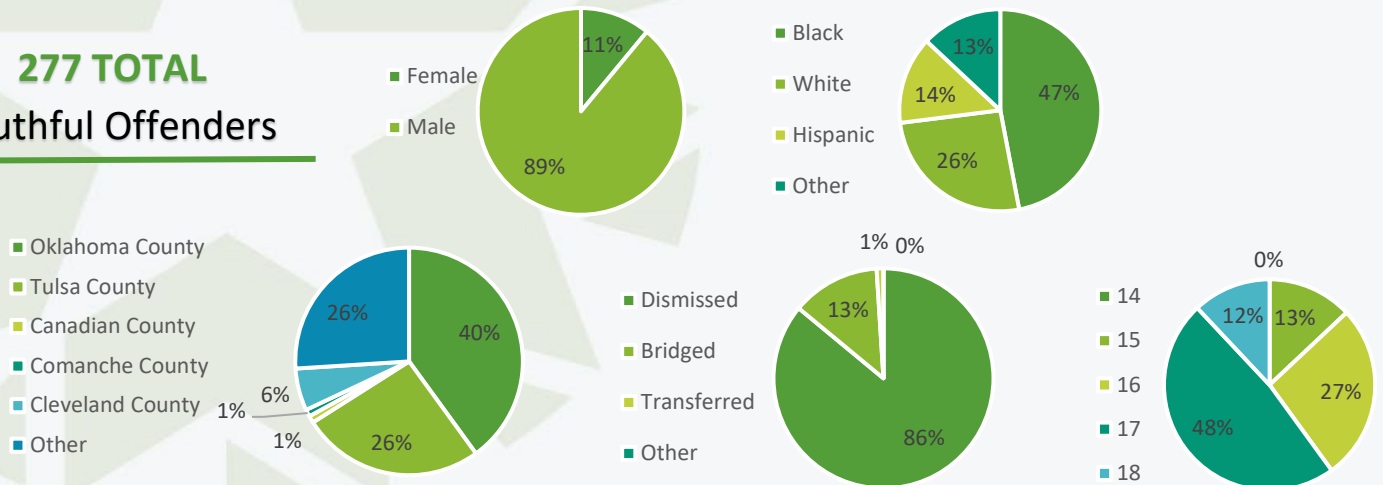
The Oklahoma Youth Academy Charter School (OYACS) provides educational services to children in secure care settings.

<b>9</b> Students Earned High School Diplomas	<b>25</b> Students Earned GEDs	<b>142</b> Students Tested for Literacy Proficiency	<b>130</b> Students Tested Below Expected Grade Level	<b>142</b> Students Participated in Literacy Remediation
--	-----------------------------------	--	--	---

## Youthful Offender Data

Charging a child as a youthful offender allows the State to ensure public safety by holding children accountable for serious crimes while affording courts methods of rehabilitation for those children in the juvenile justice system through the custody or supervision of the Office of Juvenile Affairs.

**277 TOTAL**  
Youthful Offenders



## Looking Forward

In 2021, the Office of Juvenile Affairs will focus on the following;

- Ensure all staff receive racial and ethnic disparity training to improve interaction and outcomes for juvenile justice-involved youth.
- Increase access to, and use of, virtual visitation for youth in out-of-home placements.
- Reduce number of leased field offices by 25% in response to increased teleworking, cross-agency partnerships, and organizational efficiencies.
- Create and implement a plan from the Length of Stay Policy Academy.
- Create, and implement agency-wide, an Attitudes Related to Trauma-Informed Care (ARTIC) scale and move towards becoming a trauma-informed, hope-centered agency.
- Increase compensation of all OJA employees to better reflect current salary market rates and improve overall employee retention and satisfaction.