

Community Based Services

Providing intake and probation in 73 counties, custody and parole services in all 77 counties.

		7,829	2,056	1,546	509
		Referrals Received	Youth in Detention	Youth in Supervision & Probation	Youth in Custody
AGE	Under 14	1,500	77	300	47
	14 years old	1,419	235	270	90
	15 years old	1,602	358	317	126
	16 years old	1,571	524	294	123
	17 years old	1,600	563	316	109
	18 years old	125	296	45	13
	18+ years old	12	1	4	1
GENDER	Female	2,143	359	437	82
	Male	5,686	1,697	1,109	427
RACE	Black	1,927	472	170	169
	White	3,992	541	967	208
	Hispanic	881	166	197	51
	Other Race	1,029	279	212	81
CRIME	Warrants	261	713	11	5
	Status Offenses	879	14	107	14
	Misdemeanors	5,956	313	2,256	791
	Felony	4,607	1,019	2,598	1,227

2,876
 Intakes Completed

2,058
 Decline to File

321
 Informal Adjustments

744
 Deferred Filings

\$98,034.74
 Restitution Collected

13,195
 Training Hours Earned

11
 Tribal Liaisons

400
 Group Home Residents

141 Days
 Avg. Length of Stay in Group Homes

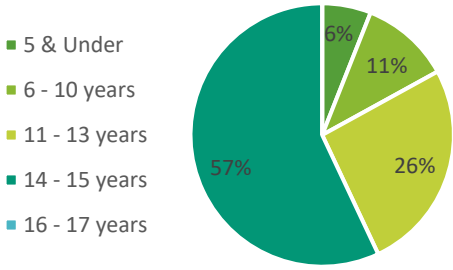
Standards for Prevention & System Improvement

Monitors and supports quality community-based prevention, treatment, and reintegration services for youth.

51,456

Shelter Nights*

*OJA contracts with 21 youth shelters across the state. Children served may be in DHS custody, OJA custody, or from within the community.



843 Hours

Training, Technical Assistance, and Community Linkages

1,253 Events

Training, Technical Assistance, and Community Linkages

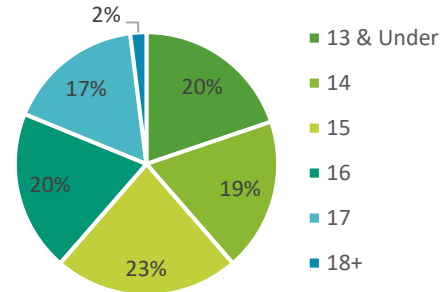
219 Events

Cultural and Lingual Services

1,598

Children & Families Served by the First Time Offender Program*

*A 14-hour course which requires youth to attend with their caregiver.



10

Youth in Workforce Programs

1

Deinstitutionalization of Status Offender Violations

1

Separation Violations

2

Jail Removal Violations

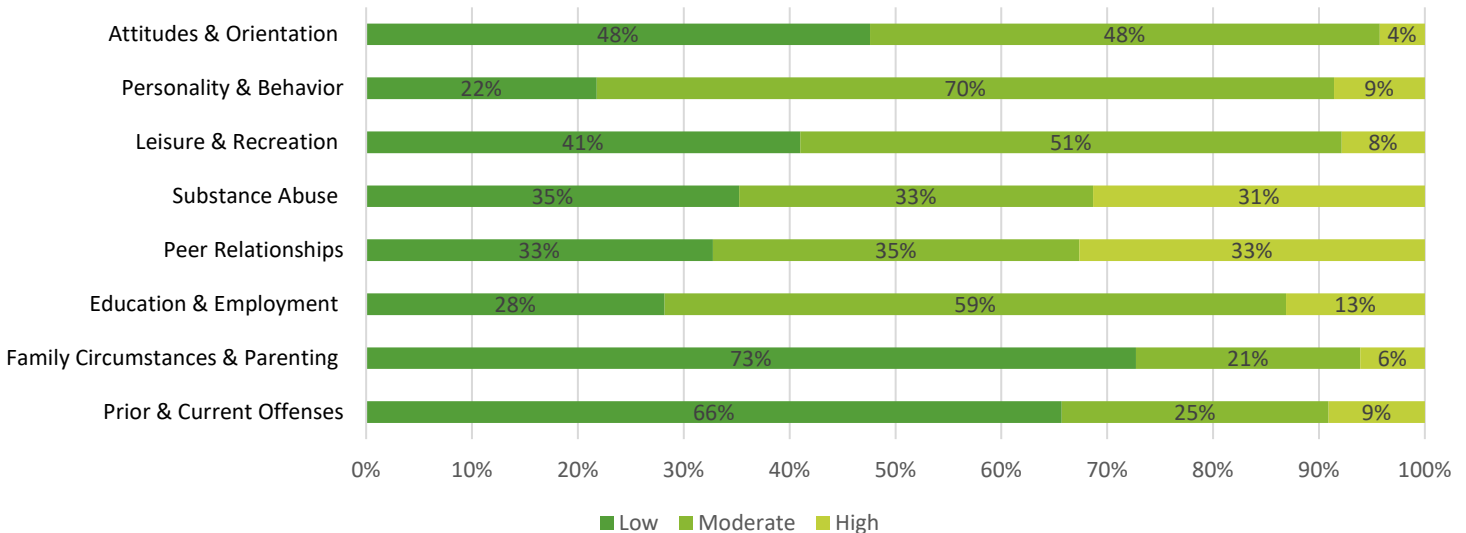
104

Children Served through Juvenile Relapse Avoidance Project (JRAP)

2,905

Youth Level of Service /Case Management Inventory™ (YLS/CMI) Assessments Completed*

*YLS/CMI is an evidence-based instrument that measures risk and need factors in 8 domains providing an overall score that indicates a youth's risk for recidivism. The levels of degree range from low (would likely not contribute) to very high (would likely contribute).



Residential Placement Support

Responsible for the care of children in secure care settings operated by OJA.

71	38	5	3,441	62.37%
Unique Residents	Residents Paroled	Residents Bridged	Family Visits	PbS Score

Education Data

The Oklahoma Youth Academy Charter School (OYACS) provides educational services to children in secure care settings.

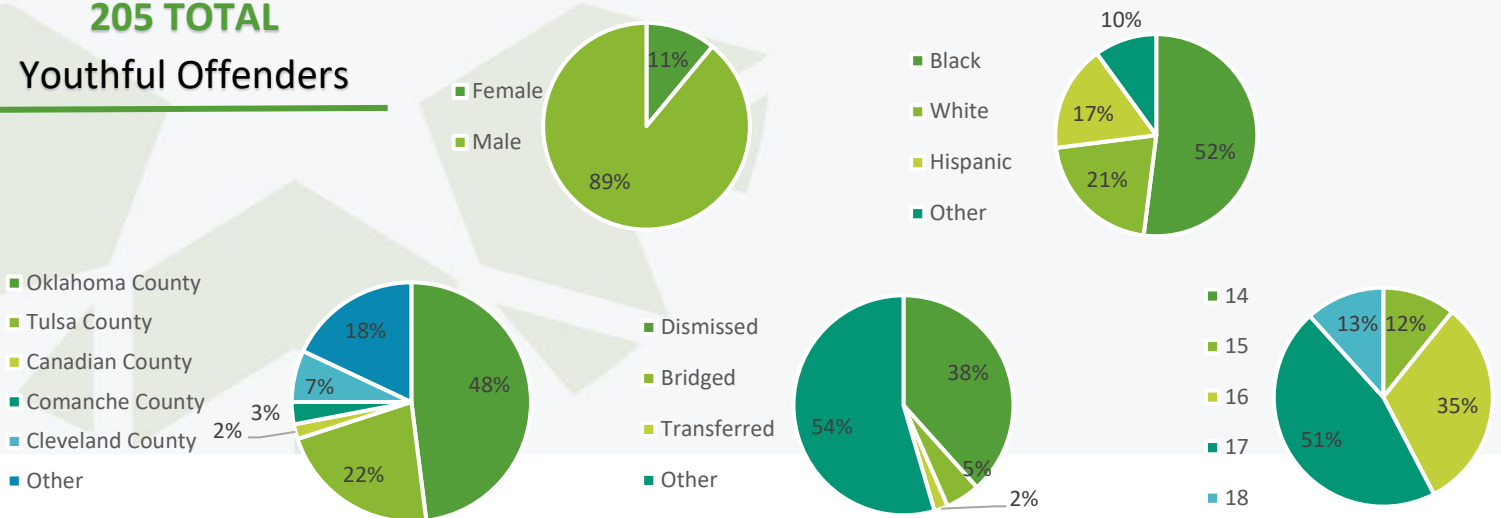
14	14	82	73	82
Students Earned High School Diplomas	Students Earned GEDs	Students Tested for Literacy Proficiency	Students Tested Below Expected Grade Level	Students Participated in Literacy Remediation

Youthful Offender Data

Charging a child as a youthful offender allows the State to ensure public safety by holding children accountable for serious crimes while affording courts methods of rehabilitation for those children in the juvenile justice system through the custody or supervision of the Office of Juvenile Affairs.

205 TOTAL

Youthful Offenders



Looking Forward

In 2023, the Office of Juvenile Affairs will focus on the following;

- Improving data collection from other state and federal agencies as well as contracted service providers.
- Recruitment and retention of secure-care treatment staff and local OJA field office staff.
- Keeping construction of the Next Generation campus on time and on budget.
- Expand career readiness services to students at Oklahoma Youth Academy Charter School.
- Ensure all new clinical hires are licensed.