



# Oklahoma Business Employment Dynamics: 2nd Quarter 2025

Oklahoma Employment Security Commission  
Economic Research and Analysis Division

# OKLAHOMA BUSINESS EMPLOYMENT DYNAMICS

## 2nd Quarter 2025

Oklahoma Employment Security Commission  
Trae Rahill, Chief Executive Officer

Economic Research and Analysis Division  
Lynn Gray, Director & Chief Economist

Will Rogers Memorial Office Building  
Labor Market Information Unit, 5th Floor N  
P.O. Box 52003  
Oklahoma City, OK 73152-2003  
Phone: (405) 557-5369  
Fax: (405) 525-0139  
Email: [lmi1@oesc.state.ok.us](mailto:lmi1@oesc.state.ok.us)

## March 2026

This publication is issued and is part of the activities of the Oklahoma Employment Security Commission as authorized by the Oklahoma Employment Security Act. An electronic copy has been deposited with the Publishing Clearinghouse of the Oklahoma Department of Libraries.

Equal Opportunity Employer/Program  
Auxiliary aids and services are available upon request for individuals with disabilities

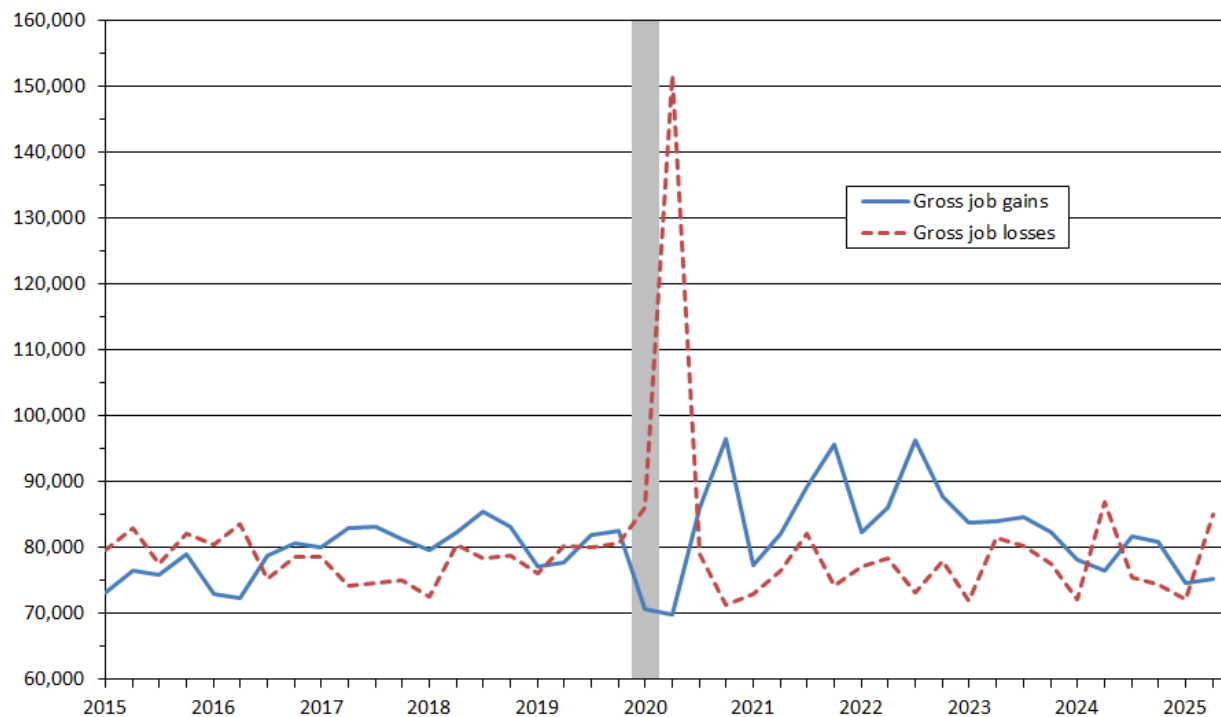
# OKLAHOMA BUSINESS EMPLOYMENT DYNAMICS: 2nd Quarter 2025

## Gross Job Gains and Gross Job Losses: 2nd Quarter 2025

From March 2025 to June 2025, gross job losses from contracting and closing private-sector establishments in Oklahoma were 84,979, an increase of 12,866 jobs from the previous quarter. Over this period, gross job gains from expanding and opening private-sector establishments were 75,218, an increase of 457 jobs from the previous quarter, according to the Oklahoma Employment Security Commission, Economic Research and Analysis Division, and the U.S. Bureau of Labor Statistics, (see Chart 1, below and Table 1, page 6). The difference between the number of gross job gains and the number of gross job losses yielded a net employment loss of 9,761 jobs in Oklahoma’s private sector during the 2nd quarter of 2025.

**Chart 1**

Private sector gross job gains and gross job losses in Oklahoma  
March 2015 - June 2025, seasonally adjusted

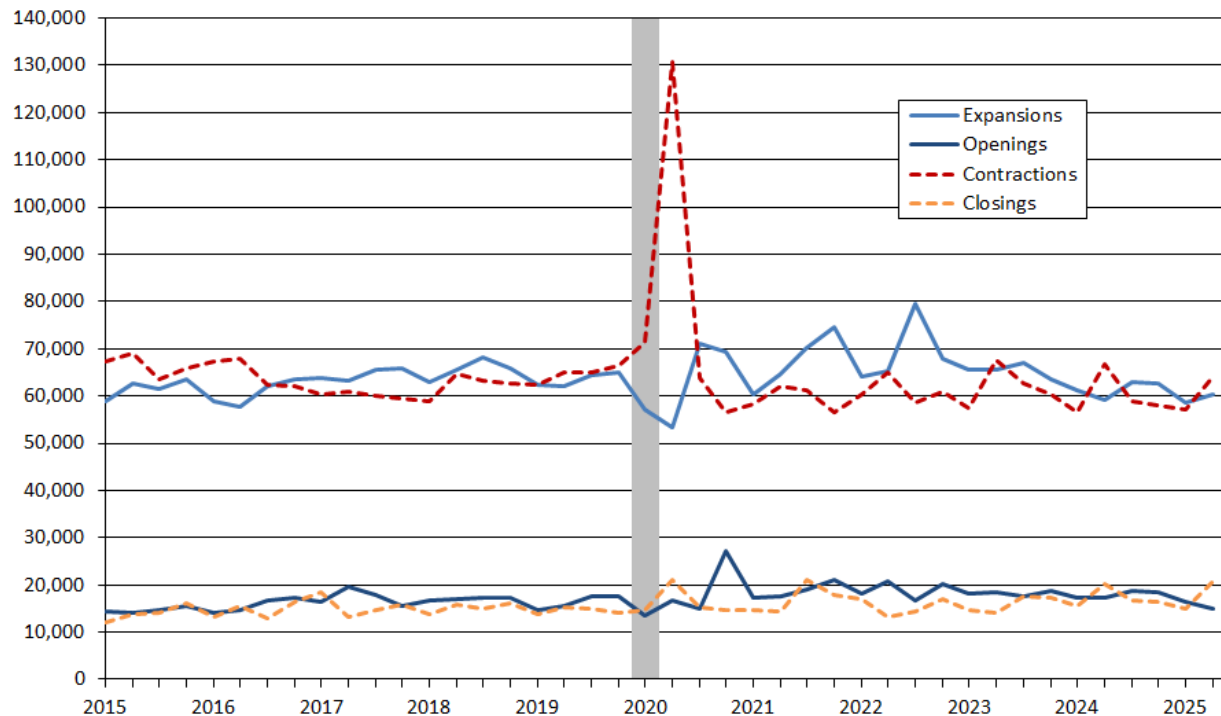


Source: U.S. Bureau of Labor Statistics  
Note: Shaded area represents NBER defined recession period.

The change in the number of jobs over time is the net result of increases and decreases in employment that occur at all businesses in the economy. Business Employment Dynamics (BED) statistics track these changes in employment at private business establishments from the third month of one quarter to the third month of the next. *Gross job gains* are the sum of increases in employment from expansions at existing establishments and the addition of new jobs at opening establishments. *Gross job losses* are the result of contractions in employment at existing establishments and the loss of jobs at closing establishments. The difference between the number of gross job gains and the number of gross job losses is the net change in employment, (see Technical Note, page 6, for more information).

**Chart 2**

**Components of private sector gross job gains and losses in Oklahoma  
March 2015 - June 2025, seasonally adjusted**



Source: U.S. Bureau of Labor Statistics  
Note: Shaded area represents NBER defined recession periods.

### **Gross Job Gains and Losses: Openings vs. Closings and Expansions vs. Contractions**

Gross job gains are the sum of increases in employment due to expansions at existing establishments and the addition of new jobs at opening establishments. Gross job gains at expanding establishments in Oklahoma totaled 60,280 in the 2nd quarter of 2025, an increase of 1,820 jobs compared to the previous quarter. Opening establishments accounted for 14,938 of the jobs gained in the 2nd quarter of 2025, a decrease of 1,363 jobs from the previous quarter, (see Chart 2, above).

Gross job losses are the result of contractions in employment at existing establishments and the loss of jobs at closing establishments. Contracting establishments in Oklahoma lost 64,181 jobs in the 2nd quarter of 2025, an increase of 6,998 jobs from the prior quarter. In the 2nd quarter, closing establishments lost 20,798 jobs, an increase of 5,868 jobs from the previous quarter.

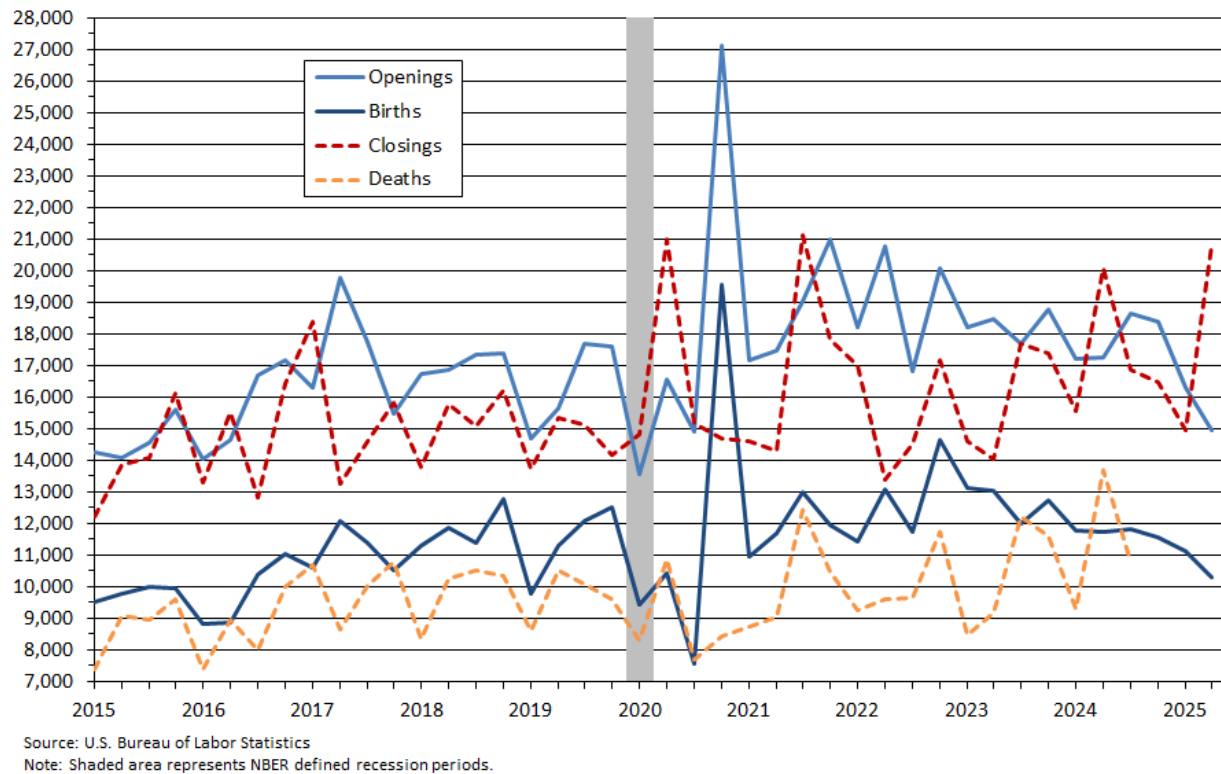
### **Establishment Births and Deaths**

In Oklahoma, the number of private sector establishment births, (a subset of the openings data), increased by 422, for a total of 3,360 establishments in the 2nd quarter of 2025. These new establishments accounted for 10,276 jobs, a decrease of 835 jobs from the previous quarter, (see Chart 3, next page).

Data for establishment deaths, (a subset of the closings data), are now available through the 3rd quarter of 2024, when 10,754 jobs were lost at 2,989 establishments, a decrease of 2,915 jobs from the 2nd quarter of 2024, (see Chart 3, page 3).

### Chart 3

Employment from private sector openings, closings, births and deaths in Oklahoma  
March 2015 - June 2025, seasonally adjusted



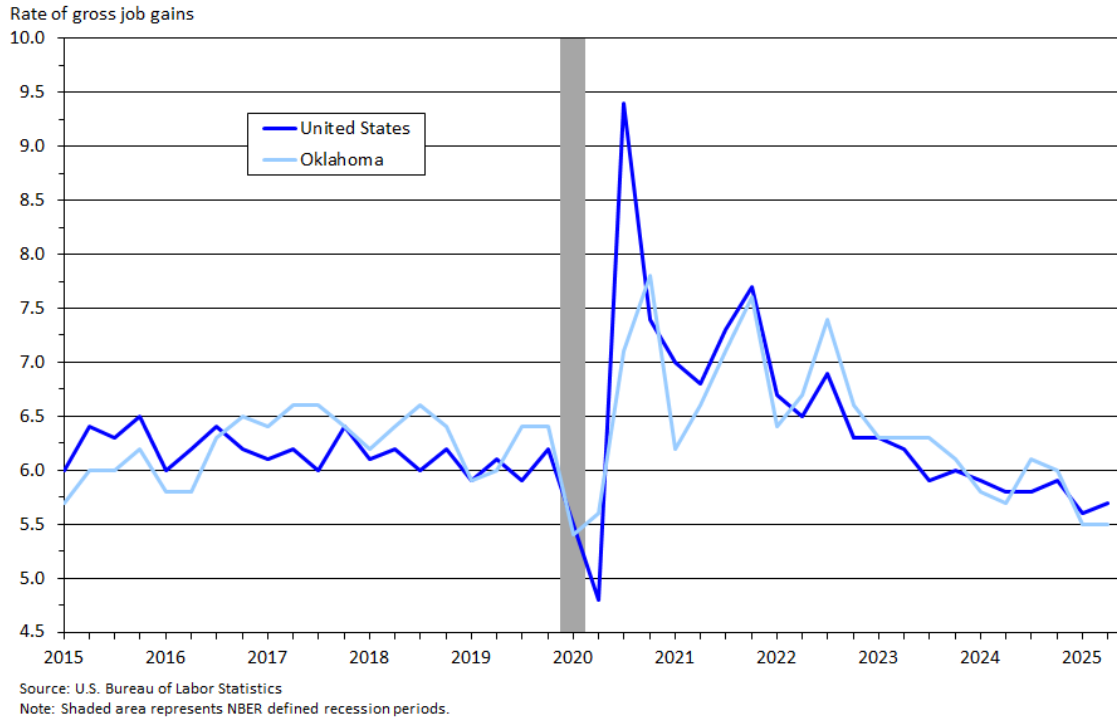
### Gross Job Gains and Gross Job Losses: Percent of Total Private Sector Employment

In the 2nd quarter of 2025, gross job gains represented 5.5 percent of private-sector employment in Oklahoma with expansions accounting for 4.4 percent of total private sector employment and openings contributing 1.1 percent. Nationally, gross job gains accounted for 5.7 percent of private sector employment in the 2nd quarter of 2025. With few exceptions, Oklahoma's rates of gross job gains have generally tracked with the U.S. rates. However, beginning in the 1st quarter of 2015, the rate of Oklahoma's gross job gains slipped below the national rate for eight consecutive quarters, exceeded the U.S. rate in the following nine quarters and exceeded the U.S. rate in 12 out of the past 24 quarters, (see Chart 4, page 4).

In the 2nd quarter of 2025, gross job losses represented 6.2 percent of private-sector employment in Oklahoma, with contractions accounting for 4.7 percent and closings adding another 1.5 percent. The national rate of gross job losses was 6.0 percent in the 2nd quarter of 2025. From the 3rd quarter 2013 forward, Oklahoma's rate of gross job losses has shown more volatility especially the period beginning 1st quarter 2015 through 1st quarter 2017, and then tracking more with national trends from the 4th quarter of 2017 forward, (see Chart 5, page 4).

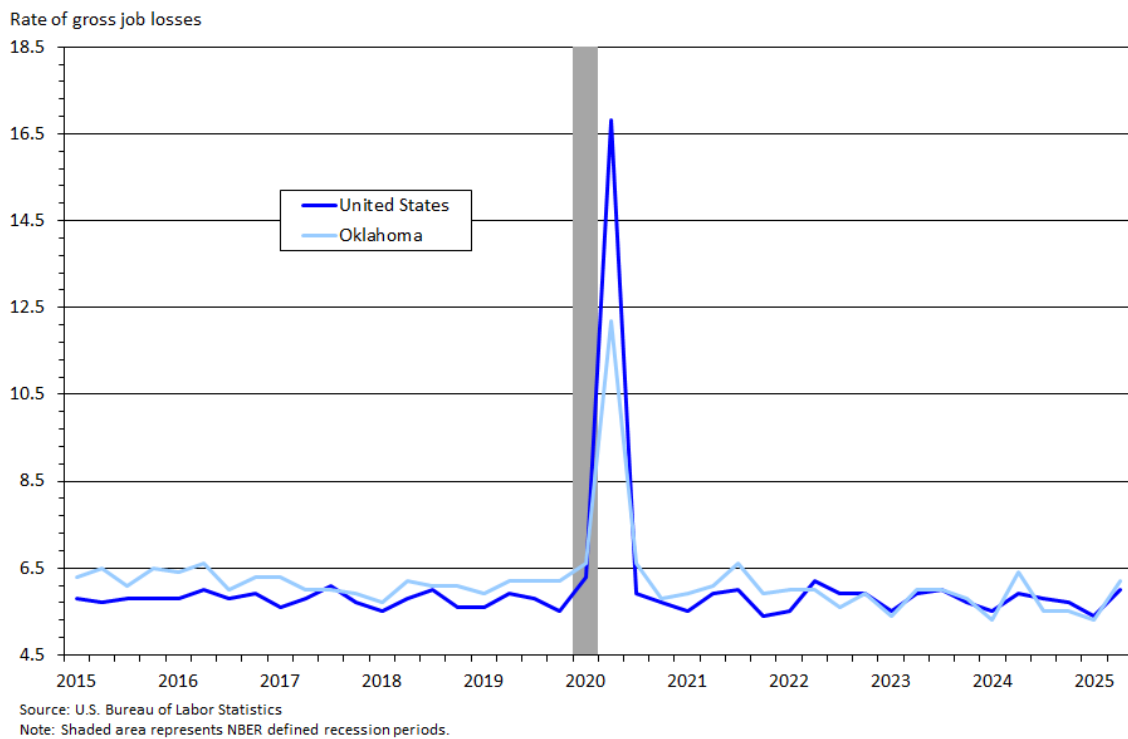
### Chart 4

Private sector gross job gains as a percent of employment, United States and Oklahoma  
March 2015 - June 2025, seasonally adjusted



### Chart 5

Private sector gross job losses as a percent of employment, United States and Oklahoma  
March 2015 - March 2025, seasonally adjusted



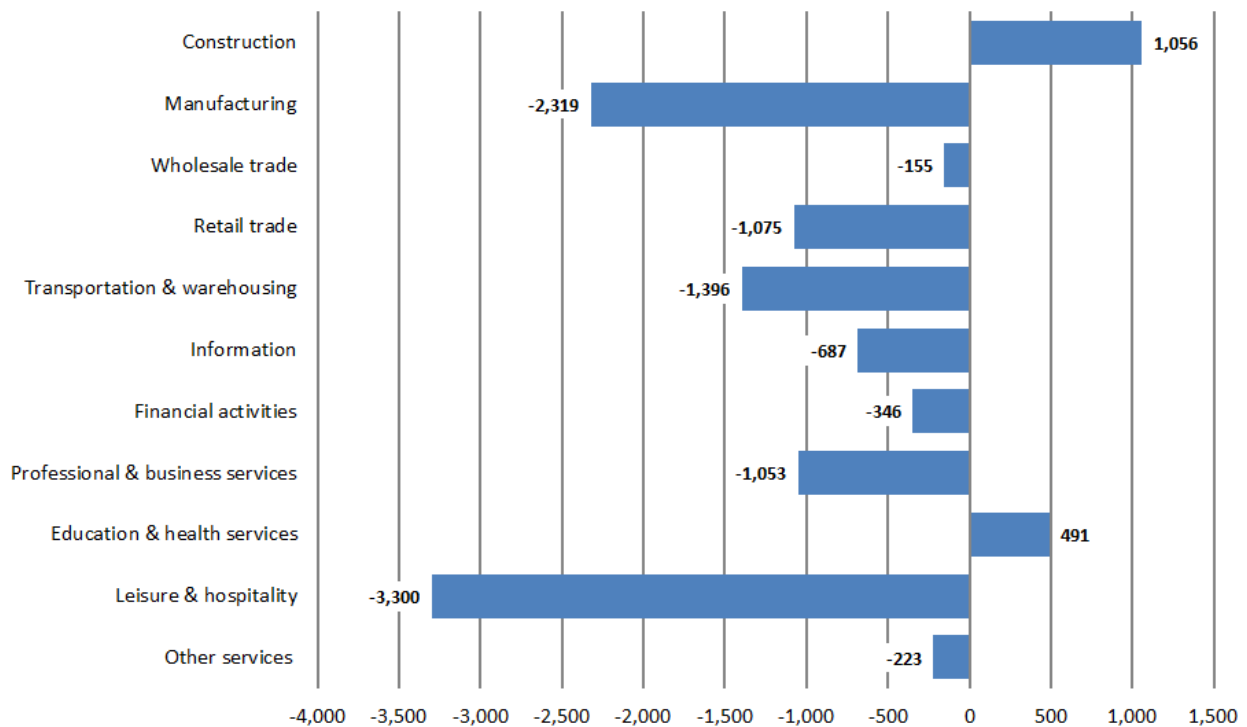
### Gross Job Gains and Gross Job Losses by Industry: 2nd Quarter 2025

Gross job losses exceeded gross job gains in nine of Oklahoma’s 11 reported industry sectors in the 2nd quarter of 2025. Oklahoma’s service-providing industries experienced a net job loss of 7,744 jobs in the 2nd quarter. This was the result of 61,838 gross job gains and 69,582 gross job losses. Within service-providing industries, the leisure & hospitality sector had the largest over-the-quarter net job loss, shedding 3,300 jobs, followed by the transportation & warehousing sector with a net decrease of 1,396 jobs. Education & health care services had the only net job gain in the 2nd quarter of 2025, increasing by 491 jobs.

Goods-producing industries reported a net job loss of 1,263 jobs in the 2nd quarter of 2025. Within goods-producing industries, the construction sector reported a net job gain of 1,056 jobs, while the manufacturing sector had a net job loss of 2,319 jobs in the 2nd quarter of 2025, (see Chart 6 below and Table 5, pp. 12-14).

**Chart 6**

Private sector net change in jobs by industry, Oklahoma  
June 2025, seasonally adjusted



Source: U.S. Department of Labor, Bureau of Labor Statistics

<b>Table 1. Oklahoma: Three-month private sector gross job gains and losses, seasonally adjusted</b>					
Category	3 months ended				
	June 2024	Sep 2024	Dec 2024	March 2025	June 2025
	Levels				
Gross job gains.....	<b>76,548</b>	<b>81,705</b>	<b>81,013</b>	<b>74,761</b>	<b>75,218</b>
Expanding establishments	59,290	63,042	62,648	58,460	60,280
Opening establishments	17,258	18,663	18,365	16,301	14,938
Gross job losses.....	<b>86,853</b>	<b>75,580</b>	<b>74,449</b>	<b>72,113</b>	<b>84,979</b>
Contracting establishments	66,795	58,739	57,962	57,183	64,181
Closing establishments	20,058	16,841	16,487	14,930	20,798
Net employment change <sup>1</sup>	6,125	6,564	2,648	2,648	-9,761
	Rates (percent)				
Gross job gains.....	<b>5.7</b>	<b>6.1</b>	<b>6.0</b>	<b>5.5</b>	<b>5.5</b>
Expanding establishments	4.5	4.4	4.7	4.6	4.4
Opening establishments	1.3	1.3	1.4	1.4	1.1
Gross job losses.....	<b>6.4</b>	<b>5.5</b>	<b>5.5</b>	<b>5.3</b>	<b>6.2</b>
Contracting establishments	4.2	4.9	4.3	4.3	4.7
Closing establishments	1.1	1.5	1.2	1.2	1.5
Net employment change <sup>1</sup>	-0.7	0.6	0.5	0.2	-0.7
Source: U.S Bureau of Labor Statistics					
<sup>1</sup> Net employment change is the difference between total gross job gains and total gross job losses.					

### Additional Statistics and Other Information

Additional information on gross job gains and gross job losses are available online at <http://www.bls.gov/bdm>. This information includes national data on the levels and rates of gross job gains and gross job losses by firm size, the not seasonally adjusted data and other seasonally adjusted time series not presented in this release, charts of gross job gains and gross job losses by industry and firm size, and frequently asked questions on firm-size data. Additional information about the Business Employment Dynamics data can be found in the Technical Note of this release or may be obtained by emailing [BDMinfo@bls.gov](mailto:BDMinfo@bls.gov).

### Technical Note

#### Concepts and Methodology

The Business Employment Dynamics (BED) data are a product of a federal-state cooperative program known as Quarterly Census of Employment and Wages (QCEW), or the ES-202 program. The BED data are compiled from existing quarterly QCEW records. The QCEW reports are sent by the State Employment Security Agencies (SESAs) to BLS and form the basis of the Bureau's QCEW program and establishment universe sampling frame. These reports are also used to produce the QCEW data on total employment and wages. Other important Bureau uses of the QCEW reports are in the Current Employment Statistics

(CES) program. The CES program produces monthly estimates of employment, net changes, and earnings by detailed industry.

In the BED program, the QCEW records are linked across quarters to provide a longitudinal history for each establishment. The linkage process allows the tracking of net employment changes at the establishment level, which in turn allows the estimation of jobs gained at opening and expanding establishments and jobs lost at closing and contracting establishments.

The change in the number of jobs over time is the net result of increases and decreases in employment that occur at all businesses in the economy. BED statistics track these changes in employment at private business establishments from the third month of one quarter to the third month of the next. Gross job gains are the sum of increases in employment from expansions at existing establishments and the addition of new jobs at opening establishments. Gross job losses are the result of contractions in employment at existing establishments and the loss of jobs at closing establishments. The difference between the number of gross jobs gained and the number of gross jobs lost is the net change in employment.

Gross job gains and gross job losses are expressed as rates by dividing their levels by the average of employment in the current and previous quarters. The rates are calculated for the components of gross job gains and gross job losses and then summed to form their respective totals. These rates can be added and subtracted just as their levels can. For instance, the difference between the gross job gains rate and the gross job losses rate is the net growth rate.

The formal definitions of employment changes are as follows:

*Openings:* These are either establishments with positive third month employment for the first time in the current quarter, with no links to the prior quarter, or with positive third month employment in the current quarter following zero employment in the previous quarter.

*Expansions:* These are establishments with positive employment in the third month in both the previous and current quarters, with a net increase in employment over this period.

*Closings:* These are either establishments with positive third month employment in the previous quarter, with no employment or zero employment reported in the current quarter.

*Contractions:* These are establishments with positive employment in the third month in both the previous and current quarters, with a net decrease in employment over this period.

Table 1. Oklahoma: Private sector gross job gains and job losses, seasonally adjusted								
Year	3 months ended	Net change <sup>1</sup>	Gross job gains			Gross job losses		
			Total	Expanding establishments	Opening establishment	Total	Contracting establishments	Closing establishments
2015	March	-6,323	73,242	58,991	14,251	79,565	67,373	12,192
	June	-6,412	76,605	62,518	14,087	83,017	69,151	13,866
	September	-1,684	75,998	61,438	14,560	77,682	63,621	14,061
	December	-3,078	79,006	63,401	15,605	82,084	65,983	16,101
2016	March	-7,561	73,005	58,982	14,023	80,566	67,285	13,281
	June	-11,226	72,329	57,687	14,642	83,555	68,024	15,531
	September	3,564	78,789	62,091	16,698	75,225	62,404	12,821
	December	2,138	80,769	63,586	17,183	78,631	62,210	16,421
2017	March	1,432	80,160	63,880	16,280	78,728	60,339	18,389
	June	8,737	82,959	63,198	19,761	74,222	60,973	13,249
	September	8,423	83,197	65,459	17,738	74,774	60,167	14,607
	December	6,175	81,361	65,881	15,480	75,186	59,357	15,829
2018	March	7,056	79,658	62,937	16,721	72,602	58,842	13,760
	June	1,964	82,400	65,520	16,880	80,436	64,661	15,775
	September	7,071	85,484	68,167	17,317	78,413	63,349	15,064
	December	4,246	83,123	65,752	17,371	78,877	62,649	16,228
2019	March	1,060	77,142	62,436	14,706	76,082	62,340	13,742
	June	-2,432	77,802	62,140	15,662	80,234	64,881	15,353
	September	1,851	82,020	64,329	17,691	80,169	65,061	15,108
	December	1,769	82,516	64,927	17,589	80,747	66,577	14,170
2020	March	-15,476	70,670	57,127	13,543	86,146	71,348	14,798
	June	-81,960	69,814	53,241	16,573	151,774	130,801	20,973
	September	7,059	86,130	71,222	14,908	79,071	63,922	15,149
	December	25,173	96,489	69,354	27,135	71,316	56,627	14,689
2021	March	4,449	77,411	60,233	17,178	72,962	58,349	14,613
	June	5,697	82,157	64,677	17,480	76,460	62,176	14,284
	September	7,064	89,262	70,217	19,045	82,198	61,088	21,110
	December	21,332	95,644	74,643	21,001	74,312	56,497	17,815
2022	March	5,201	82,441	64,245	18,196	77,240	60,267	16,973
	June	7,778	86,129	65,365	20,764	78,351	64,988	13,363
	September	23,198	96,327	79,490	16,837	73,129	58,613	14,516
	December	9,763	87,860	67,800	20,060	78,097	60,949	17,148
2023	March	11,819	83,869	65,651	18,218	72,050	57,447	14,603
	June	2,448	83,959	65,510	18,449	81,511	67,476	14,035
	September	4,354	84,630	66,939	17,691	80,276	62,594	17,682
	December	4,813	82,380	63,609	18,771	77,567	60,197	17,370
2024	March	6,126	78,298	61,075	17,223	72,172	56,633	15,539
	June	-10,305	76,548	59,290	17,258	86,853	66,795	20,058
	September	6,125	81,705	63,042	18,663	75,580	58,739	16,841
	December	6,564	81,013	62,648	18,365	74,449	57,962	16,487
2025	March	2,648	74,761	58,460	16,301	72,113	57,183	14,930
	June	-9,761	75,218	60,280	14,938	84,979	64,181	20,798

<sup>1</sup>Net change is the difference between total gross job gains and total gross job losses.

			Gross job gains			Gross job losses		
Year	3 months ended	Net change <sup>2</sup>	Total	Expanding establishments	Opening establishments	Total	Contracting establishments	Closing establishments
2015	March	-0.6	5.7	4.6	1.1	6.3	5.3	1.0
	June	-0.5	6.0	4.9	1.1	6.5	5.4	1.1
	September	-0.1	6.0	4.9	1.1	6.1	5.0	1.1
	December	-0.3	6.2	5.0	1.2	6.5	5.2	1.3
2016	March	-0.6	5.8	4.7	1.1	6.4	5.3	1.1
	June	-0.8	5.8	4.6	1.2	6.6	5.4	1.2
	September	0.3	6.3	5.0	1.3	6.0	5.0	1.0
	December	0.2	6.5	5.1	1.4	6.3	5.0	1.3
2017	March	0.1	6.4	5.1	1.3	6.3	4.8	1.5
	June	0.6	6.6	5.0	1.6	6.0	4.9	1.1
	September	0.6	6.6	5.2	1.4	6.0	4.8	1.2
	December	0.5	6.4	5.2	1.2	5.9	4.7	1.2
2018	March	0.5	6.2	4.9	1.3	5.7	4.6	1.1
	June	0.2	6.4	5.1	1.3	6.2	5.0	1.2
	September	0.5	6.6	5.3	1.3	6.1	4.9	1.2
	December	0.3	6.4	5.1	1.3	6.1	4.8	1.3
2019	March	0.0	5.9	4.8	1.1	5.9	4.8	1.1
	June	-0.2	6.0	4.8	1.2	6.2	5	1.2
	September	0.2	6.4	5.0	1.4	6.2	5.0	1.2
	December	0.2	6.4	5.0	1.4	6.2	5.1	1.1
2020	March	-1.2	5.4	4.4	1.0	6.6	5.5	1.1
	June	-6.6	5.6	4.3	1.3	12.2	10.5	1.7
	September	0.5	7.1	5.9	1.2	6.6	5.3	1.3
	December	2.0	7.8	5.6	2.2	5.8	4.6	1.2
2021	March	0.3	6.2	4.8	1.4	5.9	4.7	1.2
	June	0.5	6.6	5.2	1.4	6.1	5.0	1.1
	September	0.5	7.1	5.6	1.5	6.6	4.9	1.7
	December	1.7	7.6	5.9	1.7	5.9	4.5	1.4
2022	March	0.4	6.4	5.0	1.4	6.0	4.7	1.3
	June	0.7	6.7	5.1	1.6	6.0	5.0	1.0
	September	1.8	7.4	6.1	1.3	5.6	4.5	1.1
	December	0.7	6.6	5.1	1.5	5.9	4.6	1.3
2023	March	0.9	6.3	4.9	1.4	5.4	4.3	1.1
	June	0.3	6.3	4.9	1.4	6.0	5.0	1.0
	September	0.3	6.3	5.0	1.3	6.0	4.7	1.3
	December	0.3	6.1	4.7	1.4	5.8	4.5	1.3
2024	March	0.5	5.8	4.5	1.3	5.3	4.2	1.1
	June	-0.7	5.7	4.4	1.3	6.4	4.9	1.5
	September	0.6	6.1	4.7	1.4	5.5	4.3	1.2
	December	0.5	6.0	4.6	1.4	5.5	4.3	1.2
2025	March	0.2	5.5	4.3	1.2	5.3	4.2	1.1
	June	-0.7	5.5	4.4	1.1	6.2	4.7	1.5

<sup>1</sup>The rates measure gross job gains and job losses as a percentage of the average of the previous and current employment levels.

<sup>2</sup>Net change is the difference between total gross job gains and total gross job losses.

**Table 3. Oklahoma: Private sector establishment births and deaths, seasonally adjusted**

Year	3 months ended	Births <sup>1</sup>		Deaths <sup>2</sup>	
		Establishments	Employment	Establishments	Employment
2015	March	2,392	9,500	2,341	7,402
	June	2,345	9,784	2,537	9,080
	September	2,354	9,997	2,412	8,956
	December	2,344	9,928	2,446	9,616
2016	March	2,282	8,812	2,323	7,405
	June	2,301	8,879	2,351	8,964
	September	2,341	10,393	2,325	8,007
	December	2,381	11,028	2,367	9,983
2017	March	2,574	10,608	2,915	10,694
	June	2,543	12,087	1,951	8,626
	September	2,520	11,386	2,121	10,025
	December	2,376	10,531	2,735	10,790
2018	March	2,316	11,308	2,236	8,361
	June	2,535	11,882	2,722	10,253
	September	2,465	11,366	2,491	10,511
	December	2,685	12,767	2,481	10,345
2019	March	2,357	9,772	2,418	8,618
	June	2,667	11,276	2,576	10,494
	September	2,794	12,057	2,425	10,063
	December	2,574	12,501	2,544	9,594
2020	March	2,138	9,436	2,257	8,299
	June	2,431	10,418	3,123	10,842
	September	1,967	7,573	2,309	7,673
	December	3,208	19,570	2,231	8,438
2021	March	2,866	10,969	2,505	8,727
	June	3,327	11,699	2,524	9,040
	September	3,523	12,998	3,364	12,425
	December	3,426	11,939	2,763	10,453
2022	March	3,505	11,415	2,625	9,235
	June	3,989	13,085	2,600	9,607
	September	3,552	11,720	2,525	9,652
	December	4,301	14,650	3,135	11,751
2023	March	3,636	13,110	2,697	8,490
	June	3,632	13,026	2,958	9,185
	September	3,509	11,986	3,428	12,208
	December	3,310	12,747	3,317	11,615
2024	March	3,542	11,755	2,957	9,300
	June	3,084	11,742	5,393	13,669
	September	3,156	11,829	N/A	N/A
	December	3,091	11,569	N/A	N/A
2025	March	2,938	11,111	N/A	N/A
	June	3,360	10,276	N/A	N/A

<sup>1</sup> Values for births are not available for the first three quarters of the time series by definition.

<sup>2</sup> Values for deaths are not available for the most recent three quarters by definition.

		Births <sup>2</sup>		Deaths <sup>3</sup>	
Year	3 months ended	Establishments	Employment	Establishments	Employment
2015	March	2.7	0.7	2.6	0.6
	June	2.6	0.8	2.9	0.7
	September	2.7	0.8	2.7	0.7
	December	2.6	0.8	2.8	0.8
2016	March	2.6	0.7	2.6	0.6
	June	2.6	0.7	2.7	0.7
	September	2.6	0.8	2.6	0.6
	December	2.7	0.9	2.7	0.8
2017	March	2.9	0.8	3.3	0.9
	June	2.9	1.0	2.2	0.7
	September	2.8	0.9	2.4	0.8
	December	2.6	0.8	3.0	0.8
2018	March	2.6	0.9	2.5	0.7
	June	2.8	0.9	3.0	0.8
	September	2.7	0.9	2.8	0.8
	December	3.0	1.0	2.8	0.8
2019	March	2.6	0.8	2.7	0.7
	June	3.0	0.9	2.9	0.8
	September	3.1	0.9	2.7	0.8
	December	2.8	1.0	2.8	0.7
2020	March	2.4	0.7	2.5	0.6
	June	2.7	0.8	3.5	0.9
	September	2.2	0.6	2.6	0.6
	December	3.6	1.6	2.5	0.7
2021	March	3.2	0.9	2.8	0.7
	June	3.6	0.9	2.8	0.7
	September	3.8	1.0	3.7	1.0
	December	3.7	0.9	3.0	0.8
2022	March	3.8	0.9	2.8	0.7
	June	4.2	1.0	2.8	0.7
	September	3.7	0.9	2.6	0.7
	December	4.4	1.1	3.2	0.9
2023	March	3.7	1.0	2.7	0.6
	June	3.7	1.0	3.0	0.7
	September	3.5	0.9	3.5	0.9
	December	3.3	0.9	3.3	0.9
2024	March	3.5	0.9	2.9	0.7
	June	3.1	0.9	5.4	1.0
	September	3.2	0.9	3.0	0.8
	December	3.1	0.9	N/A	N/A
2025	March	3.0	0.8	N/A	N/A
	June	3.4	0.8	N/A	N/A

<sup>1</sup>The rates measure births and deaths as a percentage of the average of the previous and current quarter employment levels or total number of establishments.

<sup>2</sup>Values for births are not available for first three quarters of the time series by definition.

<sup>3</sup>Values for deaths are not available for the most recent three quarters by definition.

**Table 5. Private sector gross job gains and losses by industry, Oklahoma, seasonally adjusted**

Category	Gross job gains and job losses (3 months ended)					Gross job gains and job losses as a percent of employment (3 months ended)				
	Jun.	Sep.	Dec.	Mar.	Jun.	Jun.	Sep.	Dec.	Mar.	Jun.
	2024	2024	2024	2025	2025	2024	2024	2024	2025	2025
Total private <sup>1</sup> .....										
Gross job gains .....	76,548	81,705	81,013	74,761	75,218	5.7	6.1	6.0	5.5	5.5
At expanding establishments ...	59,290	63,042	62,648	58,460	60,280	4.4	4.7	4.6	4.3	4.4
At opening establishments ...	17,258	18,663	18,365	16,301	14,938	1.3	1.4	1.4	1.2	1.1
Gross job losses .....	86,853	75,580	74,449	72,113	84,979	6.4	5.5	5.5	5.3	6.2
At contracting establishments ...	66,795	58,739	57,962	57,183	64,181	4.9	4.3	4.3	4.2	4.7
At closing establishments ...	20,058	16,841	16,487	14,930	20,798	1.5	1.2	1.2	1.1	1.5
Net employment change <sup>2</sup> .....	-10,305	6,125	6,564	2,648	-9,761	-0.7	0.6	0.5	0.2	-0.7
Construction .....										
Gross job gains .....	6,746	6,524	7,361	7,584	7,494	7.8	7.6	8.5	8.5	8.4
At expanding establishments ...	5,175	4,878	5,913	6,243	5,917	6.0	5.7	6.8	7.0	6.6
At opening establishments ...	1,571	1,646	1,448	1,341	1,577	1.8	1.9	1.7	1.5	1.8
Gross job losses .....	8,064	6,355	5,735	5,999	6,438	9.3	7.4	6.6	6.8	7.2
At contracting establishments ...	6,409	4,717	4,395	4,499	4,915	7.4	5.5	5.1	5.1	5.5
At closing establishments ...	1,655	1,638	1,340	1,500	1,523	1.9	1.9	1.5	1.7	1.7
Net employment change <sup>2</sup> .....	-1,318	169	1,626	1,585	1,056	-1.5	0.2	1.9	1.7	1.2
Manufacturing .....										
Gross job gains .....	4,551	4,132	4,367	4,358	3,703	3.3	2.9	3.1	3.1	2.7
At expanding establishments ...	4,039	3,526	3,994	3,896	3,312	2.9	2.5	2.8	2.8	2.4
At opening establishments ...	512	606	373	462	391	0.4	0.4	0.3	0.3	0.3
Gross job losses .....	4,161	4,451	4,233	4,019	6,022	3.0	3.2	3.0	2.8	4.2
At contracting establishments ...	3,365	3,606	3,476	3,566	3,727	2.4	2.6	2.5	2.5	2.6
At closing establishments ...	796	845	757	453	2,295	0.6	0.6	0.5	0.3	1.6
Net employment change <sup>2</sup> .....	390	-319	134	339	-2,319	0.3	-0.3	0.1	0.3	-1.5
Wholesale trade .....										
Gross job gains .....	2,915	3,020	2,936	2,993	2,823	4.9	5.0	4.9	5.0	4.7
At expanding establishments ...	2,323	2,213	2,164	2,160	2,148	3.9	3.7	3.6	3.6	3.6
At opening establishments ...	592	807	772	833	675	1.0	1.3	1.3	1.4	1.1
Gross job losses .....	2,706	2,720	2,980	2,778	2,978	4.5	4.5	5.0	4.6	4.9
At contracting establishments ...	1,937	2,028	2,220	2,090	2,195	3.2	3.4	3.7	3.5	3.6
At closing establishments ...	769	692	760	688	783	1.3	1.1	1.3	1.1	1.3
Net employment change <sup>2</sup> .....	209	300	-44	215	-155	0.4	0.5	-0.1	0.4	-0.2

Note: See footnotes at end of table

**Table 5. Private sector gross job gains and losses by industry, Oklahoma, seasonally adjusted (cont.)**

Category	Gross job gains and job losses (3 months ended)					Gross job gains and job losses as a percent of employment (3 months ended)				
	Jun.	Sep.	Dec.	Mar.	Jun.	Jun.	Sep.	Dec.	Mar.	Jun.
	2024	2024	2024	2025	2025	2024	2024	2024	2025	2025
Retail trade .....										
Gross job gains .....	9,341	10,832	9,164	10,673	9,453	5.0	5.8	5.0	5.8	5.1
At expanding establishments ...	7,713	9,290	7,218	9,215	8,165	4.1	5.0	3.9	5.0	4.4
At opening establishments ...	1,628	1,542	1,946	1,930	1,288	0.9	0.8	1.1	0.8	0.7
Gross job losses .....	10,539	10,055	11,348	8,204	10,528	5.7	5.4	6.1	4.4	5.7
At contracting establishments ...	8,749	8,412	9,865	6,540	8,875	4.7	4.5	5.3	3.5	4.8
At closing establishments ...	1,790	1,643	1,483	1,664	1,653	1.0	0.9	0.8	0.9	0.9
Net employment change <sup>2</sup> .....	-1,198	777	-2,184	2,469	-1,075	-0.7	0.4	-1.1	1.4	-0.6
Transportation and warehousing .....										
Gross job gains .....	2,124	2,793	4,497	1,882	2,406	3.4	4.6	7.2	3.0	4.0
At expanding establishments ...	1,729	2,365	4,065	1,440	2,071	2.8	3.9	6.5	2.3	3.4
At opening establishments ...	395	428	432	442	335	0.6	0.7	0.7	0.7	0.6
Gross job losses .....	3,690	3,072	2,638	3,989	3,802	5.9	5.0	4.3	6.5	6.3
At contracting establishments ...	3,168	2,593	1,906	3,690	3,267	5.1	4.2	3.1	6.0	5.4
At closing establishments ...	522	479	732	299	535	0.8	0.8	1.2	0.5	0.9
Net employment change <sup>2</sup> .....	-1,566	-279	1,859	-2,107	-1,396	-2.5	-0.4	2.9	-3.5	-2.3
Information .....										
Gross job gains .....	963	1,150	1,039	1,140	909	5.5	6.7	6.0	6.5	5.3
At expanding establishments ...	773	717	660	805	708	4.4	4.2	3.8	4.6	4.1
At opening establishments ...	190	433	379	335	201	1.1	2.5	2.2	1.9	1.2
Gross job losses .....	1,142	1,081	1,122	892	1,596	6.6	6.3	6.5	5.1	9.2
At contracting establishments ...	793	876	877	630	969	4.6	5.1	5.1	3.6	5.6
At closing establishments ...	349	205	245	262	627	2.0	1.2	1.4	1.5	3.6
Net employment change <sup>2</sup> .....	-179	69	-83	248	-687	-1.1	0.4	-0.5	1.4	-3.9
Financial activities .....										
Gross job gains .....	3,917	3,476	3,807	3,792	4,012	4.8	4.2	4.7	4.6	4.9
At expanding establishments ...	2,871	2,635	2,526	2,912	2,842	3.5	3.2	3.1	3.5	3.5
At opening establishments ...	1,046	841	1,281	880	1,170	1.3	1.0	1.6	1.1	1.4
Gross job losses .....	4,105	3,570	3,637	3,754	4,358	5.0	4.3	4.4	4.6	5.4
At contracting establishments ...	2,914	2,552	2,731	2,687	3,161	3.5	3.1	3.3	3.3	3.9
At closing establishments ...	1,191	1,018	906	1,067	1,197	1.5	1.2	1.1	1.3	1.5
Net employment change <sup>2</sup> .....	-188	-94	170	38	-346	-0.2	-0.1	0.3	0.0	-0.5

Note: See footnotes at end of table

<b>Table 5. Private sector gross job gains and losses by industry, Oklahoma, seasonally adjusted (cont.)</b>										
Category	Gross job gains and job losses (3 months ended)					Gross job gains and job losses as a percent of employment (3 months ended)				
	Jun. 2024	Sep. 2024	Dec. 2024	Mar. 2025	Jun. 2025	Jun. 2024	Sep. 2024	Dec. 2024	Mar. 2025	Jun. 2025
Professional and business services .....										
Gross job gains .....	14,819	15,429	15,191	12,349	14,663	7.2	7.5	7.3	6.0	7.1
At expanding establishments ...	10,318	11,526	11,179	9,422	11,317	5.0	5.6	5.4	4.6	5.5
At opening establishments ...	4,501	3,903	4,012	2,927	3,346	2.2	1.9	1.9	1.4	1.6
Gross job losses .....	18,684	14,171	14,007	13,115	15,716	9.0	6.9	6.8	6.3	7.6
At contracting establishments ...	14,720	10,698	10,334	9,935	11,935	7.1	5.2	5.0	4.8	5.8
At closing establishments ...	3,964	3,473	3,673	3,180	3,781	1.9	1.7	1.8	1.5	1.8
Net employment change <sup>2</sup> .....	-3,865	1,258	1,184	-766	-1,053	-1.8	0.6	0.5	-0.3	-0.5
Education and health services .....										
Gross job gains .....	12,713	12,480	11,744	10,582	11,235	5.3	5.2	4.8	4.3	4.5
At expanding establishments ...	10,775	9,595	9,191	8,714	9,633	4.5	4.0	3.8	3.5	3.9
At opening establishments ...	1,938	2,885	2,553	1,868	1,602	0.8	1.2	1.0	0.8	0.6
Gross job losses .....	11,595	11,107	10,066	9,642	10,744	4.8	4.6	4.1	3.9	4.4
At contracting establishments ...	7,031	8,397	7,766	7,865	8,091	2.9	3.5	3.2	3.2	3.3
At closing establishments ...	4,564	2,710	2,300	1,777	2,653	1.9	1.1	0.9	0.7	1.1
Net employment change <sup>2</sup> .....	1,118	1,373	1,678	940	491	0.5	0.6	0.7	0.4	0.1
Leisure and hospitality										
Gross job gains .....	13,543	16,604	15,339	14,459	13,690	7.4	9.1	8.2	7.7	7.4
At expanding establishments ...	9,830	12,485	11,596	9,713	10,489	5.4	6.8	6.2	5.2	5.7
At opening establishments ...	3,713	4,119	3,743	4,746	3,201	2.0	2.3	2.0	2.5	1.7
Gross job losses .....	16,402	13,892	13,210	14,930	16,990	9.0	7.6	7.1	8.0	9.2
At contracting establishments ...	13,456	11,009	10,304	12,123	12,814	7.4	6.0	5.5	6.5	6.9
At closing establishments ...	2,946	2,883	2,906	2,807	4,176	1.6	1.6	1.6	1.5	2.3
Net employment change <sup>2</sup> .....	-2,859	2,712	2,129	-471	-3,300	-1.6	1.5	1.1	-0.3	-1.8
Other services <sup>3</sup> .....										
Gross job gains .....	2,674	2,791	3,056	2,748	2,647	6.9	7.3	7.9	7.1	6.9
At expanding establishments ...	2,060	1,958	2,203	2,064	1,925	5.3	5.1	5.7	5.3	5.0
At opening establishments ...	614	833	853	684	722	1.6	2.2	2.2	1.8	1.9
Gross job losses .....	2,971	2,711	2,593	2,630	2,870	7.6	7.0	6.7	6.8	7.4
At contracting establishments ...	2,104	2,041	1,963	1,906	2,019	5.4	5.3	5.1	4.9	5.2
At closing establishments ...	867	670	630	724	851	2.2	1.7	1.6	1.9	2.2
Net employment change <sup>2</sup> .....	-297	80	463	118	-223	-0.7	0.3	1.2	0.3	-0.5

Footnotes:

(1) Includes unclassified sector not shown separately.

(2) The net employment change is the difference between total gross job gains and total gross job losses.

(3) Except public administration.

*This workforce product was funded by a grant awarded by the U.S. Department of Labor's Employment and Training Administration. This product was created by the recipient and does not necessarily reflect the official position of the U.S. Department of Labor. The U.S. Department of Labor makes no guarantees, warranties, or assurances of any kind, express or implied, with respect to such information, including any information on linked sites and including, but not limited to, accuracy of the information or its completeness, timeliness, usefulness, adequacy, continued availability, or ownership. This product is copyrighted by the institution that created it. Internal use by an organization and/or personal use by an individual for non-commercial purposes is permissible. All other uses require the prior authorization of the copyright owner.*