

2023

OKLAHOMA BUSINESS EMPLOYMENT DYNAMICS

1st Quarter 2023



OKLAHOMA BUSINESS EMPLOYMENT DYNAMICS

1st Quarter 2023

Oklahoma Employment Security Commission
Trae Rahill, Chief Executive Officer

Economic Research and Analysis Division
Lynn Gray, Director & Chief Economist

Will Rogers Memorial Office Building
Labor Market Information Unit, 5th Floor N
P.O. Box 52003
Oklahoma City, OK 73152-2003
Phone: (405) 557-5369
Email: lmi1@oesc.state.ok.us

November 2023

This publication is issued and is part of the activities of the Oklahoma Employment Security Commission as authorized by the Oklahoma Employment Security Act. An electronic copy has been deposited with the Publishing Clearinghouse of the Oklahoma Department of Libraries.

Equal Opportunity Employer/Program
Auxiliary aids and services are available upon request for individuals with disabilities

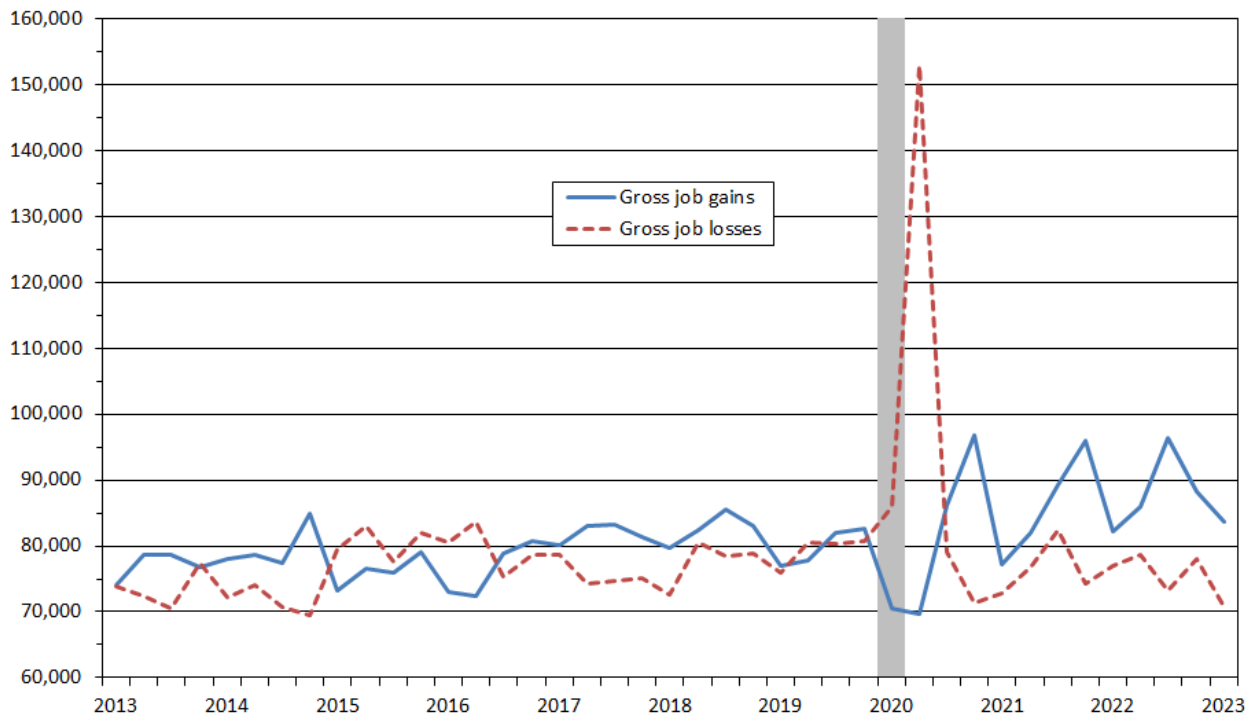
OKLAHOMA BUSINESS EMPLOYMENT DYNAMICS: 1st Quarter 2023

Gross Job Gains and Gross Job Losses: 1st Quarter 2023

From December 2022 to March 2023, gross job gains from opening and expanding private-sector establishments in Oklahoma totaled 83,640, a decrease of 4,517 jobs from the previous quarter. Over this period, gross job losses from closing and contracting private-sector establishments were 70,808, a decrease of 7,261 jobs from the previous quarter, according to the Oklahoma Employment Security Commission, Economic Research and Analysis Division, and the U.S. Bureau of Labor Statistics, (see Chart 1, below and Table 1, page 6). The difference between the number of gross job gains and the number of gross job losses yielded a net employment gain of 12,832 jobs in Oklahoma’s private sector during the 1st quarter of 2023.

Chart 1

Private sector gross job gains and gross job losses in Oklahoma
March 2013 - March 2023, seasonally adjusted

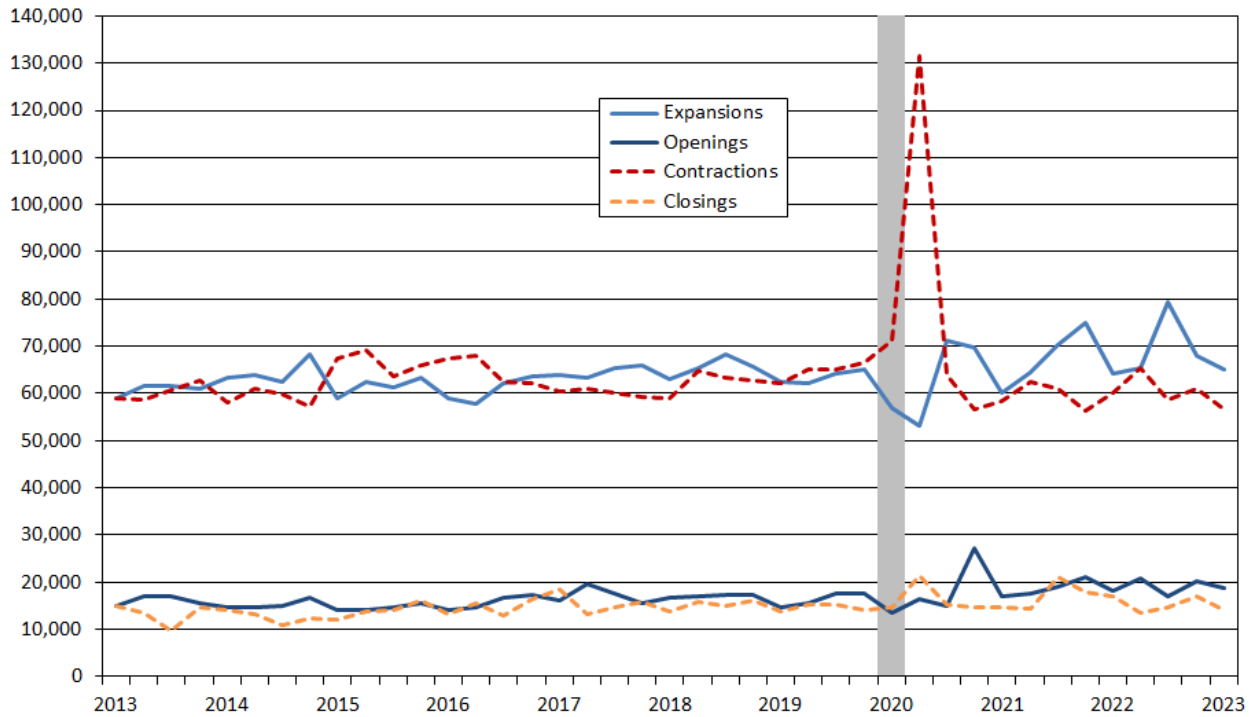


Source: U.S. Bureau of Labor Statistics
Note: Shaded area represents NBER defined recession period.

The change in the number of jobs over time is the net result of increases and decreases in employment that occur at all businesses in the economy. Business Employment Dynamics (BED) statistics track these changes in employment at private business establishments from the third month of one quarter to the third month of the next. *Gross job gains* are the sum of increases in employment from expansions at existing establishments and the addition of new jobs at opening establishments. *Gross job losses* are the result of contractions in employment at existing establishments and the loss of jobs at closing establishments. The difference between the number of gross job gains and the number of gross job losses is the net change in employment, (see Technical Note, page 6, for more information).

Chart 2

**Components of private sector gross job gains and losses in Oklahoma
March 2013 - March 2023, seasonally adjusted**



Source: U.S. Bureau of Labor Statistics
Note: Shaded area represents NBER defined recession periods.

Gross Job Gains and Losses: Openings vs. Closings and Expansions vs. Contractions

Gross job gains are the sum of increases in employment due to expansions at existing establishments and the addition of new jobs at opening establishments. Gross job gains at expanding establishments in Oklahoma totaled 64,998 in the 1st quarter of 2023, a decrease of 3,016 jobs compared to the previous quarter. Opening establishments accounted for 18,642 of the jobs gained in the 1st quarter of 2023, a decrease of 1,501 jobs from the previous quarter, (see Chart 2, above).

Gross job losses are the result of contractions in employment at existing establishments and the loss of jobs at closing establishments. Contracting establishments in Oklahoma lost 56,589 jobs in the 1st quarter of 2023, a decrease of 4,317 jobs from the prior quarter. In the 1st quarter, closing establishments lost 14,219 jobs, a decrease of 2,944 jobs from the previous quarter.

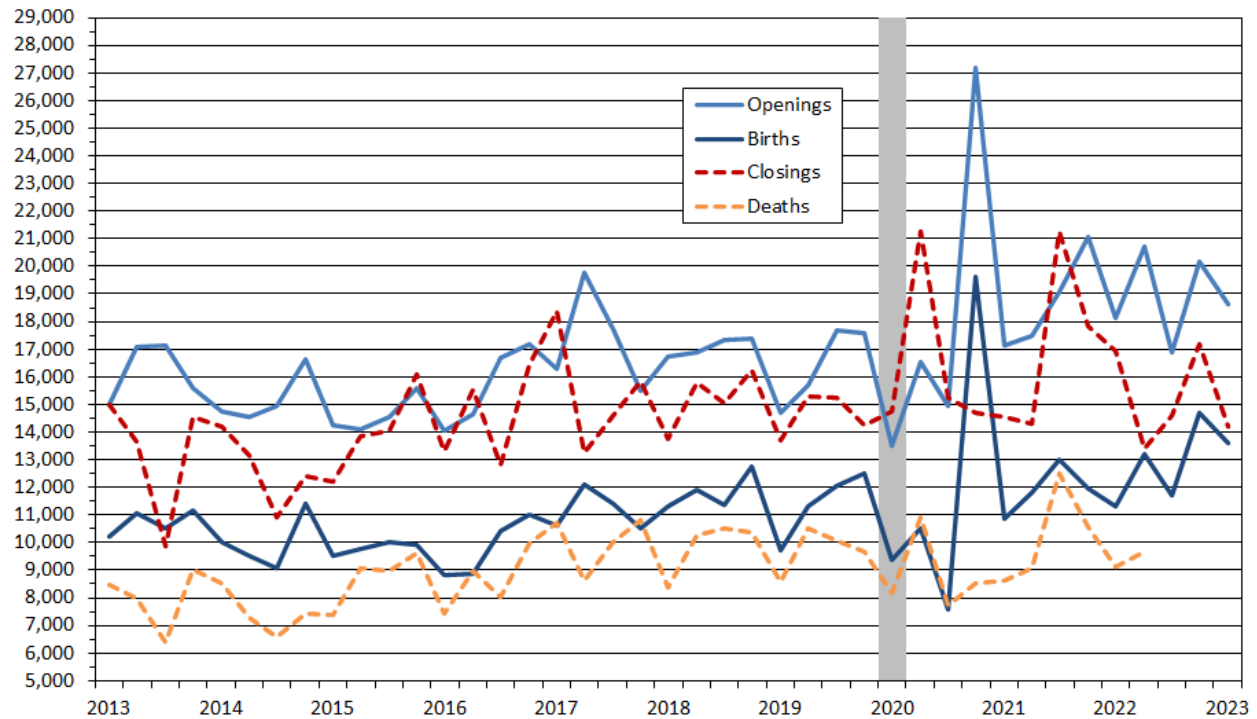
Establishment Births and Deaths

In Oklahoma, the number of private sector establishment births, (a subset of the openings data), decreased by 665, for a total of 3,635 establishments in the 1st quarter of 2023. These new establishments accounted for 13,578 jobs, a decrease of 1,117 jobs from the previous quarter, (see Chart 3, next page).

Data for establishment deaths, (a subset of the closings data), are now available through the 2nd quarter of 2022, when 9,648 jobs were lost at 2,598 establishments, an increase of 544 jobs from the 1st quarter of 2022, (see Chart 3, below).

Chart 3

Employment from private sector openings, closings, births and deaths in Oklahoma
March 2013 - March 2023, seasonally adjusted



Source: U.S. Bureau of Labor Statistics
Note: Shaded area represents NBER defined recession periods.

Gross Job Gains and Gross Job Losses: Percent of Total Private Sector Employment

In the 1st quarter of 2023, gross job gains represented 6.3 percent of private-sector employment in Oklahoma with expansions accounting for 4.9 percent of total private sector employment and openings contributing 1.4 percent. Nationally, gross job gains accounted for 6.2 percent of private sector employment in the 1st quarter of 2023. With few exceptions, Oklahoma's rates of gross job gains have generally tracked with the U.S. rates. However, beginning in the 1st quarter of 2015, the rate of Oklahoma's gross job gains slipped below the national rate for seven consecutive quarters, exceeded the U.S. rate in the following nine quarters but has lagged behind the U.S. rate in nine out of the past 17 quarters, (see Chart 4, page 4).

In the 1st quarter of 2023, gross job losses represented 5.3 percent of private-sector employment in Oklahoma, with contractions accounting for 4.2 percent and closings adding another 1.1 percent. The national rate of gross job losses was 5.4 percent in the 1st quarter of 2023. From the 3rd quarter 2013 forward, Oklahoma's rate of gross job losses has shown more volatility especially the period beginning 1st quarter 2015 through 1st quarter 2017, then tracking more with national trends from the 4th quarter of 2017 forward, (see Chart 5, page 4).

Chart 4

Private sector gross job gains as a percent of employment, United States and Oklahoma
March 2013 - March 2023, seasonally adjusted

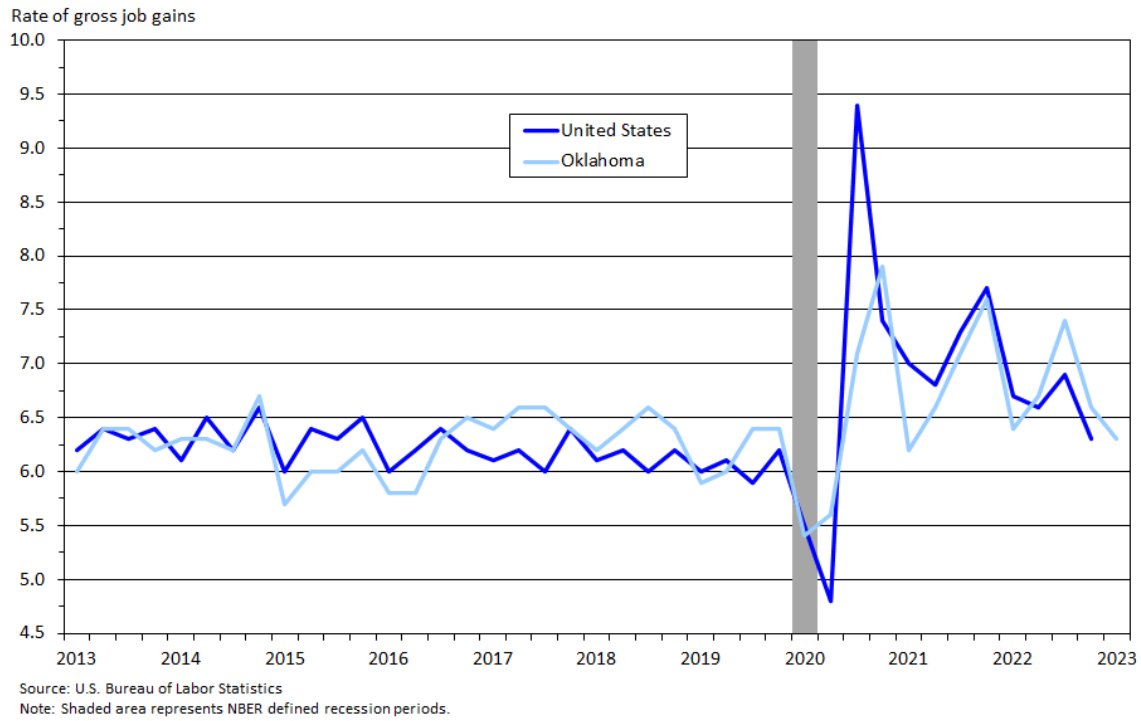
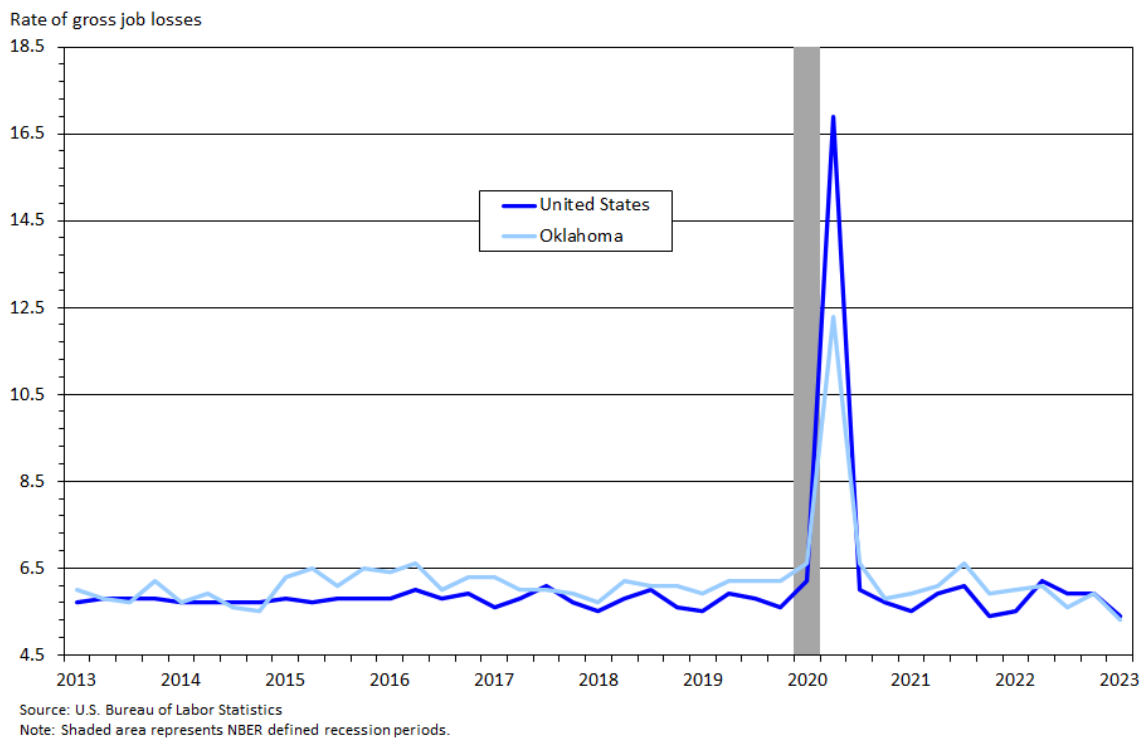


Chart 5

Private sector gross job losses as a percent of employment, United States and Oklahoma
March 2013 - March 2023, seasonally adjusted



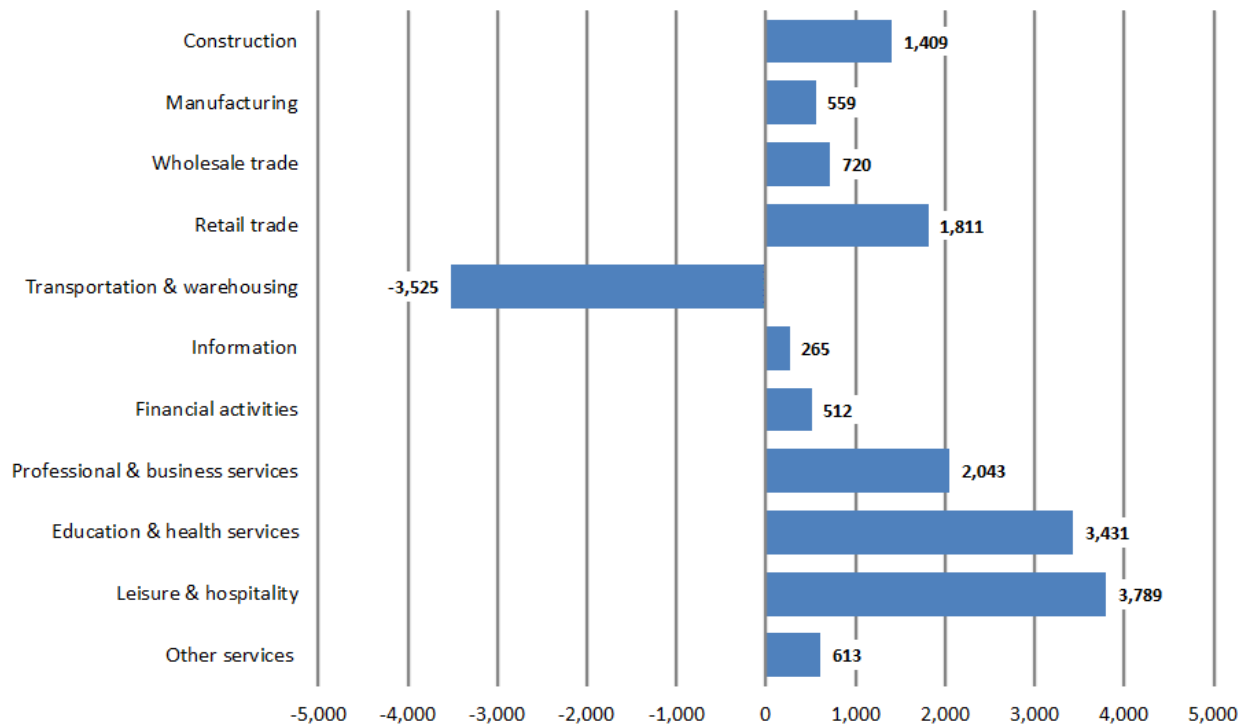
Gross Job Gains and Gross Job Losses by Industry: 1st Quarter 2023

Gross job gains exceeded gross job losses in 10 of Oklahoma’s 11 reported industry sectors in the 1st quarter of 2023. Oklahoma’s service-providing industries experienced a net job increase of 9,659 jobs in the 1st quarter. This was the result of 68,698 gross job gains and 59,039 gross job losses. Within service-providing industries, the leisure & hospitality sector had the largest over-the-quarter net job increase, gaining 3,789 jobs, followed by the education & health services sector with a net increase of 3,431 jobs in the 1st quarter of 2023.

Goods-producing industries reported a net job increase of 1,968 jobs in the 1st quarter of 2023. Within goods-producing industries, the construction sector reported a net job gain of 1,409 jobs, while the Manufacturing sector had a net job gain of 559 jobs in the 1st quarter of 2023, (see Chart 6 below and Table 5, pp. 12-15).

Chart 6

Private sector net change in jobs by industry, Oklahoma
March 2023, seasonally adjusted



Source: U.S. Department of Labor, Bureau of Labor Statistics

Table 1. Oklahoma: Three-month private sector gross job gains and losses, seasonally adjusted					
Category	3 months ended				
	March 2022	June 2022	Sep 2022	Dec 2022	March 2023
	Levels				
Gross job gains.....	82,274	86,041	96,273	88,157	83,640
Expanding establishments	64,145	65,306	79,396	68,014	64,998
Opening establishments	18,129	20,735	16,877	20,143	18,642
Gross job losses.....	77,077	78,698	73,231	78,069	70,808
Contracting establishments	60,167	65,316	58,632	60,906	56,589
Closing establishments	16,910	13,382	14,599	17,163	14,219
Net employment change ¹	5,197	7,343	23,042	10,088	12,832
	Rates (percent)				
Gross job gains.....	6.4	6.7	7.4	6.6	6.3
Expanding establishments	5.0	5.1	6.1	5.1	4.9
Opening establishments	1.4	1.6	1.3	1.5	1.4
Gross job losses.....	6.0	6.1	5.6	5.9	5.3
Contracting establishments	4.7	5.1	4.5	4.6	4.2
Closing establishments	1.3	1.0	1.1	1.3	1.1
Net employment change ¹	0.4	0.6	1.8	0.7	1.0
Source: U.S Bureau of Labor Statistics					
¹ Net employment change is the difference between total gross job gains and total gross job losses.					

Additional Statistics and Other Information

Additional information on gross job gains and gross job losses are available online at <http://www.bls.gov/bdm>. This information includes national data on the levels and rates of gross job gains and gross job losses by firm size, the not seasonally adjusted data and other seasonally adjusted time series not presented in this release, charts of gross job gains and gross job losses by industry and firm size, and frequently asked questions on firm-size data. Additional information about the Business Employment Dynamics data can be found in the Technical Note of this release or may be obtained by emailing BDMinfo@bls.gov.

Technical Note

Concepts and Methodology

The Business Employment Dynamics (BED) data are a product of a federal-state cooperative program known as Quarterly Census of Employment and Wages (QCEW), or the ES-202 program. The BED data are compiled from existing quarterly QCEW records. The QCEW reports are sent by the State Employment Security Agencies (SESAs) to BLS and form the basis of the Bureau's QCEW program and establishment universe sampling frame. These reports are also used to produce the QCEW data on total employment and wages. Other important Bureau uses of the QCEW reports are in the Current Employment Statistics

(CES) program. The CES program produces monthly estimates of employment, net changes, and earnings by detailed industry.

In the BED program, the QCEW records are linked across quarters to provide a longitudinal history for each establishment. The linkage process allows the tracking of net employment changes at the establishment level, which in turn allows the estimation of jobs gained at opening and expanding establishments and jobs lost at closing and contracting establishments.

The change in the number of jobs over time is the net result of increases and decreases in employment that occur at all businesses in the economy. BED statistics track these changes in employment at private business establishments from the third month of one quarter to the third month of the next. Gross job gains are the sum of increases in employment from expansions at existing establishments and the addition of new jobs at opening establishments. Gross job losses are the result of contractions in employment at existing establishments and the loss of jobs at closing establishments. The difference between the number of gross jobs gained and the number of gross jobs lost is the net change in employment.

Gross job gains and gross job losses are expressed as rates by dividing their levels by the average of employment in the current and previous quarters. The rates are calculated for the components of gross job gains and gross job losses and then summed to form their respective totals. These rates can be added and subtracted just as their levels can. For instance, the difference between the gross job gains rate and the gross job losses rate is the net growth rate.

The formal definitions of employment changes are as follows:

Openings: These are either establishments with positive third month employment for the first time in the current quarter, with no links to the prior quarter, or with positive third month employment in the current quarter following zero employment in the previous quarter.

Expansions: These are establishments with positive employment in the third month in both the previous and current quarters, with a net increase in employment over this period.

Closings: These are either establishments with positive third month employment in the previous quarter, with no employment or zero employment reported in the current quarter.

Contractions: These are establishments with positive employment in the third month in both the previous and current quarters, with a net decrease in employment over this period.

Table 1. Oklahoma: Private sector gross job gains and job losses, seasonally adjusted								
Year	3 months ended	Net change ¹	Gross job gains			Gross job losses		
			Total	Expanding establishments	Opening establishments	Total	Contracting establishments	Closing establishments
2013	March	207	74,070	59,077	14,993	73,863	58,895	14,968
	June	6,364	78,751	61,649	17,102	72,387	58,716	13,671
	September	8,210	78,714	61,570	17,144	70,504	60,638	9,866
	December	-726	76,708	61,106	15,602	77,434	62,876	14,558
2014	March	5,914	78,078	63,312	14,766	72,164	57,960	14,204
	June	4,426	78,581	64,018	14,563	74,155	60,997	13,158
	September	6,688	77,401	62,466	14,935	70,713	59,797	10,916
	December	15,419	84,970	68,341	16,629	69,551	57,138	12,413
2015	March	-6,323	73,242	58,991	14,251	79,565	67,373	12,192
	June	-6,412	76,605	62,518	14,087	83,017	69,151	13,866
	September	-1,684	75,998	61,438	14,560	77,682	63,621	14,061
	December	-3,078	79,006	63,401	15,605	82,084	65,983	16,101
2016	March	-7,561	73,005	58,982	14,023	80,566	67,285	13,281
	June	-11,226	72,329	57,687	14,642	83,555	68,024	15,531
	September	3,564	78,789	62,091	16,698	75,225	62,404	12,821
	December	2,138	80,769	63,586	17,183	78,631	62,210	16,421
2017	March	1,432	80,160	63,880	16,280	78,728	60,339	18,389
	June	8,737	82,959	63,198	19,761	74,222	60,973	13,249
	September	8,423	83,197	65,459	17,738	74,774	60,167	14,607
	December	6,175	81,361	65,881	15,480	75,186	59,357	15,829
2018	March	7,056	79,658	62,937	16,721	72,602	58,842	13,760
	June	1,964	82,400	65,520	16,880	80,436	64,661	15,775
	September	7,071	85,484	68,167	17,317	78,413	63,349	15,064
	December	4,246	83,123	65,752	17,371	78,877	62,649	16,228
2019	March	1,125	77,068	62,399	14,669	75,943	62,223	13,720
	June	-2,595	77,869	62,167	15,702	80,464	65,159	15,305
	September	1,745	82,019	64,316	17,703	80,274	65,056	15,218
	December	1,886	82,612	65,012	17,600	80,726	66,502	14,224
2020	March	-15,415	70,576	57,069	13,507	85,991	71,226	14,765
	June	-83,141	69,729	53,181	16,548	152,870	131,593	21,277
	September	6,992	86,161	71,207	14,954	79,169	63,933	15,236
	December	25,556	96,819	69,628	27,191	71,263	56,581	14,682
2021	March	4,437	77,258	60,147	17,111	72,821	58,270	14,551
	June	5,275	82,055	64,596	17,459	76,780	62,467	14,313
	September	7,035	89,384	70,293	19,091	82,349	61,107	21,242
	December	21,697	96,023	74,947	21,076	74,326	56,475	17,851
2022	March	5,197	82,274	64,145	18,129	77,077	60,167	16,910
	June	7,343	86,041	65,306	20,735	78,698	65,316	13,382
	September	23,042	96,273	79,396	16,877	73,231	58,632	14,599
	December	10,088	88,157	68,014	20,143	78,069	60,906	17,163
2023	March	12,832	83,640	64,998	18,642	70,808	56,589	14,219

¹Net change is the difference between total gross job gains and total gross job losses.

Table 2. Oklahoma: Private sector gross job gains and losses, as a percent of employment, ¹ seasonally adjusted								
Year	3 months ended	Net change ²	Gross job gains			Gross job losses		
			Total	Expanding establishments	Opening establishments	Total	Contracting establishments	Closing establishments
2013	March	0.0	6.0	4.8	1.2	6.0	4.8	1.2
	June	0.6	6.4	5.0	1.4	5.8	4.7	1.1
	September	0.7	6.4	5.0	1.4	5.7	4.9	0.8
	December	0.0	6.2	4.9	1.3	6.2	5.0	1.2
2014	March	0.6	6.3	5.1	1.2	5.7	4.6	1.1
	June	0.4	6.3	5.1	1.2	5.9	4.9	1.0
	September	0.6	6.2	5.0	1.2	5.6	4.7	0.9
	December	1.2	6.7	5.4	1.3	5.5	4.5	1.0
2015	March	-0.6	5.7	4.6	1.1	6.3	5.3	1.0
	June	-0.5	6.0	4.9	1.1	6.5	5.4	1.1
	September	-0.1	6.0	4.9	1.1	6.1	5.0	1.1
	December	-0.3	6.2	5.0	1.2	6.5	5.2	1.3
2016	March	-0.6	5.8	4.7	1.1	6.4	5.3	1.1
	June	-0.8	5.8	4.6	1.2	6.6	5.4	1.2
	September	0.3	6.3	5.0	1.3	6.0	5.0	1.0
	December	0.2	6.5	5.1	1.4	6.3	5.0	1.3
2017	March	0.1	6.4	5.1	1.3	6.3	4.8	1.5
	June	0.6	6.6	5.0	1.6	6.0	4.9	1.1
	September	0.6	6.6	5.2	1.4	6.0	4.8	1.2
	December	0.5	6.4	5.2	1.2	5.9	4.7	1.2
2018	March	0.5	6.2	4.9	1.3	5.7	4.6	1.1
	June	0.2	6.4	5.1	1.3	6.2	5.0	1.2
	September	0.5	6.6	5.3	1.3	6.1	4.9	1.2
	December	0.3	6.4	5.1	1.3	6.1	4.8	1.3
2019	March	0.0	5.9	4.8	1.1	5.9	4.8	1.1
	June	-0.2	6.0	4.8	1.2	6.2	5	1.2
	September	0.2	6.4	5.0	1.4	6.2	5.0	1.2
	December	0.2	6.4	5.0	1.4	6.2	5.1	1.1
2020	March	-1.2	5.4	4.4	1.0	6.6	5.5	1.1
	June	-6.7	5.6	4.3	1.3	12.3	10.6	1.7
	September	0.5	7.1	5.9	1.2	6.6	5.3	1.3
	December	2.1	7.9	5.7	2.2	5.8	4.6	1.2
2021	March	0.3	6.2	4.8	1.4	5.9	4.7	1.2
	June	0.5	6.6	5.2	1.4	6.1	5.0	1.1
	September	0.5	7.1	5.6	1.5	6.6	4.9	1.7
	December	1.7	7.6	5.9	1.7	5.9	4.5	1.4
2022	March	0.4	6.4	5.0	1.4	6.0	4.7	1.3
	June	0.6	6.7	5.1	1.6	6.1	5.1	1.0
	September	1.8	7.4	6.1	1.3	5.6	4.5	1.1
	December	0.7	6.6	5.1	1.5	5.9	4.6	1.3
2023	March	1.0	6.3	4.9	1.4	5.3	4.2	1.1

¹The rates measure gross job gains and job losses as a percentage of the average of the previous and current employment levels.

²Net change is the difference between total gross job gains and total gross job losses.

Table 3. Oklahoma: Private sector establishment births and deaths, seasonally adjusted					
Year	3 months ended	Births¹		Deaths²	
		Establishments	Employment	Establishments	Employment
2013	March	2,463	10,200	2,396	8,486
	June	2,315	11,058	2,079	7,952
	September	2,545	10,534	1,684	6,388
	December	2,329	11,139	2,158	9,012
2014	March	2,356	10,025	2,484	8,500
	June	2,449	9,512	1,965	7,301
	September	2,338	9,051	1,685	6,583
	December	2,496	11,401	2,072	7,420
2015	March	2,392	9,500	2,341	7,402
	June	2,345	9,784	2,537	9,080
	September	2,354	9,997	2,412	8,956
	December	2,344	9,928	2,446	9,616
2016	March	2,271	8,764	2,308	7,347
	June	2,298	8,892	2,367	9,028
	September	2,343	10,368	2,325	8,034
	December	2,396	11,119	2,371	9,995
2017	March	2,574	10,608	2,915	10,694
	June	2,543	12,087	1,951	8,626
	September	2,520	11,386	2,121	10,025
	December	2,376	10,531	2,735	10,790
2018	March	2,316	11,308	2,236	8,361
	June	2,535	11,882	2,722	10,253
	September	2,465	11,366	2,491	10,511
	December	2,685	12,767	2,481	10,345
2019	March	2,361	9,741	2,412	8,566
	June	2,667	11,305	2,583	10,504
	September	2,795	12,046	2,418	10,089
	December	2,569	12,528	2,556	9,654
2020	March	2,143	9,363	2,243	8,181
	June	2,426	10,499	3,120	10,888
	September	1,966	7,562	2,316	7,733
	December	3,207	19,630	2,245	8,522
2021	March	2,873	10,884	2,490	8,603
	June	3,321	11,789	2,522	9,078
	September	3,522	12,979	3,374	12,522
	December	3,425	11,976	2,780	10,556
2022	March	3,514	11,327	2,609	9,104
	June	3,981	13,186	2,598	9,648
	September	3,550	11,703	N/A	N/A
	December	4,300	14,695	N/A	N/A
2023	March	3,635	13,578	N/A	N/A

¹ Values for births are not available for the first three quarters of the time series by definition.

² Values for deaths are not available for the most recent three quarters by definition.

Table 4. Oklahoma: Rates¹ of private sector establishment births and deaths, seasonally adjusted					
		Births²		Deaths³	
Year	3 months ended	Establishments	Employment	Establishments	Employment
2013	March	2.9	0.8	2.8	0.7
	June	2.7	0.9	2.4	0.6
	September	3.0	0.8	2.0	0.5
	December	2.7	0.9	2.5	0.7
2014	March	2.7	0.8	2.9	0.7
	June	2.8	0.8	2.3	0.6
	September	2.7	0.7	1.9	0.5
	December	2.8	0.9	2.3	0.6
2015	March	2.7	0.7	2.6	0.6
	June	2.6	0.8	2.9	0.7
	September	2.7	0.8	2.7	0.7
	December	2.6	0.8	2.8	0.8
2016	March	2.6	0.7	2.6	0.6
	June	2.6	0.7	2.7	0.7
	September	2.6	0.8	2.6	0.6
	December	2.7	0.9	2.7	0.8
2017	March	2.9	0.8	3.3	0.9
	June	2.9	1.0	2.2	0.7
	September	2.8	0.9	2.4	0.8
	December	2.6	0.8	3.0	0.8
2018	March	2.6	0.9	2.5	0.7
	June	2.8	0.9	3.0	0.8
	September	2.7	0.9	2.8	0.8
	December	3.0	1.0	2.8	0.8
2019	March	2.6	0.8	2.7	0.7
	June	3.0	0.9	2.9	0.8
	September	3.1	0.9	2.7	0.8
	December	2.8	1.0	2.8	0.7
2020	March	2.4	0.7	2.5	0.6
	June	2.7	0.8	3.5	0.9
	September	2.2	0.6	2.6	0.6
	December	3.6	1.6	2.5	0.7
2021	March	3.2	0.9	2.7	0.7
	June	3.6	0.9	2.8	0.7
	September	3.8	1.0	3.7	1.0
	December	3.7	0.9	3.0	0.8
2022	March	3.8	0.9	2.8	0.7
	June	4.2	1.0	2.8	0.7
	September	3.7	0.9	N/A	N/A
	December	4.4	1.1	N/A	N/A
2023	March	3.7	1.0	N/A	N/A

¹The rates measure births and deaths as a percentage of the average of the previous and current quarter employment levels or total number of establishments.

³Values for deaths are not available for the most recent three quarters by definition.

Table 5. Private sector gross job gains and losses by industry, Oklahoma, seasonally adjusted

Category	Gross job gains and job losses (3 months ended)					Gross job gains and job losses as a percent of employment (3 months ended)				
	Mar.	Jun.	Sep.	Dec.	Mar.	Mar.	Jun.	Sep.	Dec.	Mar.
	2022	2022	2022	2022	2022	2022	2022	2022	2022	2022
Total private ¹										
Gross job gains	82,274	86,041	96,273	88,157	83,640	6.4	6.7	7.4	6.6	6.3
At expanding establishments ...	64,145	65,306	79,396	68,014	64,998	5.0	5.1	6.1	5.1	4.9
At opening establishments ...	18,129	20,735	16,877	20,143	18,642	1.4	1.6	1.3	1.5	1.4
Gross job losses	77,077	78,698	73,231	78,069	70,808	6.0	6.1	5.6	5.9	5.3
At contracting establishments ...	60,167	65,316	58,632	60,906	56,589	4.7	5.1	4.5	4.6	4.2
At closing establishments ...	16,910	13,382	14,599	17,163	14,219	1.3	1.0	1.1	1.3	1.1
Net employment change ²	5,197	7,343	23,042	10,088	12,832	0.4	0.6	1.8	0.7	1.0
Construction										
Gross job gains	7,413	6,702	7,028	6,796	7,050	9.3	8.4	8.9	8.4	8.7
At expanding establishments ...	5,652	4,955	5,550	5,091	5,603	7.1	6.2	7.0	6.3	6.9
At opening establishments ...	1,761	1,747	1,478	1,705	1,447	2.2	2.2	1.9	2.1	1.8
Gross job losses	7,051	7,190	6,409	6,480	5,641	8.8	9.0	8.0	8.1	7.0
At contracting establishments ...	5,120	6,126	5,114	4,951	4,050	6.4	7.7	6.4	6.2	5.0
At closing establishments ...	1,931	1,064	1,295	1,529	1,591	2.4	1.3	1.6	1.9	2.0
Net employment change ²	1,238	903	-829	131	1,409	1.6	1.2	-1.0	0.1	1.7
Manufacturing										
Gross job gains	4,903	5,156	5,575	5,758	4,346	3.8	3.9	4.2	4.3	3.2
At expanding establishments ...	4,163	4,496	4,918	5,082	3,907	3.2	3.4	3.7	3.8	2.9
At opening establishments ...	740	660	657	676	439	0.6	0.5	0.5	0.5	0.3
Gross job losses	4,109	3,804	3,974	4,333	3,787	3.1	2.9	3.0	3.3	2.8
At contracting establishments ...	3,041	3,206	3,476	3,583	3,114	2.3	2.4	2.6	2.7	2.3
At closing establishments ...	1,068	598	498	750	673	0.8	0.5	0.4	0.6	0.5
Net employment change ²	2,531	1,015	1,173	1,546	559	2.0	0.8	1.0	1.2	0.4
Wholesale trade										
Gross job gains	3,082	3,349	3,493	3,493	3,407	5.5	5.9	6.1	6.0	5.8
At expanding establishments ...	2,503	2,629	2,985	2,522	2,533	4.5	4.6	5.2	4.3	4.3
At opening establishments ...	579	720	508	971	874	1.0	1.3	0.9	1.7	1.5
Gross job losses	2,425	2,489	2,602	2,794	2,687	4.4	4.4	4.5	4.9	4.6
At contracting establishments ...	1,834	1,980	2,089	1,949	2,012	3.3	3.5	3.6	3.4	3.4
At closing establishments ...	591	509	513	845	675	1.1	0.9	0.9	1.5	1.2
Net employment change ²	785	724	505	810	720	1.5	1.3	0.8	1.4	1.2

Note: See footnotes at end of table

Table 5. Private sector gross job gains and losses by industry, Oklahoma, seasonally adjusted (cont.)

Category	Gross job gains and job losses (3 months ended)					Gross job gains and job losses as a percent of employment (3 months ended)				
	Mar.	Jun.	Sep.	Dec.	Mar.	Mar.	Jun.	Sep.	Dec.	Mar.
	2022	2022	2022	2022	2022	2022	2022	2022	2022	2022
Retail trade										
Gross job gains	11,216	10,242	12,195	10,299	10,892	6.1	5.5	6.6	5.6	5.9
At expanding establishments ...	9,312	7,812	10,244	8,350	8,685	5.1	4.2	5.5	4.5	4.7
At opening establishments ...	1,904	2,430	1,951	1,949	2,207	1.0	1.3	1.1	1.1	1.2
Gross job losses	9,979	11,495	10,503	12,087	9,081	5.4	6.2	5.7	6.5	4.9
At contracting establishments ...	8,253	10,556	9,111	10,029	8,012	4.5	5.7	4.9	5.4	4.3
At closing establishments ...	1,726	939	1,392	2,058	1,069	0.9	0.5	0.8	1.1	0.6
Net employment change ²	728	1,532	-1,845	1,380	1,811	0.3	0.9	-1.1	0.7	1.0
Transportation and warehousing										
Gross job gains	2,988	2,779	7,116	4,797	2,577	4.3	4.1	10.5	6.8	3.8
At expanding establishments ...	2,456	2,081	6,467	4,241	2,059	3.5	3.1	9.5	6.0	3.0
At opening establishments ...	532	698	649	556	518	0.8	1.0	1.0	0.8	0.8
Gross job losses	5,306	5,733	3,209	3,465	6,102	7.7	8.6	4.8	4.9	8.9
At contracting establishments ...	4,696	5,281	2,753	2,868	5,537	6.8	7.9	4.1	4.1	8.1
At closing establishments ...	610	452	456	597	565	0.9	0.7	0.7	0.8	0.8
Net employment change ²	4,542	-1,936	-3,165	3,890	-3,525	6.7	-2.8	-4.7	5.7	-5.1
Information										
Gross job gains	1,324	1,174	1,230	944	1,178	7.7	6.6	6.9	5.3	6.6
At expanding establishments ...	932	903	984	554	851	5.4	5.1	5.5	3.1	4.8
At opening establishments ...	392	271	246	390	327	2.3	1.5	1.4	2.2	1.8
Gross job losses	896	831	1,195	1,084	913	5.1	4.7	6.7	6.2	5.1
At contracting establishments ...	716	679	862	875	707	4.1	3.8	4.8	5.0	3.9
At closing establishments ...	180	152	333	209	206	1.0	0.9	1.9	1.2	1.2
Net employment change ²	-195	401	326	91	265	-1.1	2.2	1.9	0.5	1.5
Financial activities										
Gross job gains	4,270	5,105	4,905	4,318	4,122	5.5	6.5	6.2	5.4	5.2
At expanding establishments ...	3,085	3,830	3,723	3,037	3,011	4.0	4.9	4.7	3.8	3.8
At opening establishments ...	1,185	1,275	1,182	1,281	1,111	1.5	1.6	1.5	1.6	1.4
Gross job losses	4,087	4,576	3,905	4,005	3,610	5.2	5.8	5.0	5.1	4.6
At contracting establishments ...	2,965	2,996	2,984	2,923	2,768	3.8	3.8	3.8	3.7	3.5
At closing establishments ...	1,122	1,580	921	1,082	842	1.4	2.0	1.2	1.4	1.1
Net employment change ²	803	327	349	695	512	1.1	0.4	0.4	0.9	0.6

Note: See footnotes at end of table

Table 5. Private sector gross job gains and losses by industry, Oklahoma, seasonally adjusted (cont.)										
Category	Gross job gains and job losses (3 months ended)					Gross job gains and job losses as a percent of employment (3 months ended)				
	Mar. 2022	Jun. 2022	Sep. 2022	Dec. 2022	Mar. 2022	Mar. 2022	Jun. 2022	Sep. 2022	Dec. 2022	Mar. 2022
Professional and business services										
Gross job gains	17,828	16,609	19,343	16,579	15,680	8.9	8.3	9.4	7.9	7.5
At expanding establishments ...	13,300	12,241	15,870	11,706	11,676	6.6	6.1	7.7	5.6	5.6
At opening establishments ...	4,528	4,368	3,473	4,873	4,004	2.3	2.2	1.7	2.3	1.9
Gross job losses	14,169	15,281	13,863	15,335	13,637	7.0	7.6	6.8	7.3	6.5
At contracting establishments ...	10,532	12,683	10,780	11,910	10,272	5.2	6.3	5.3	5.7	4.9
At closing establishments ...	3,637	2,598	3,083	3,425	3,365	1.8	1.3	1.5	1.6	1.6
Net employment change ²	5,784	3,401	419	4,584	2,043	2.9	1.7	0.2	2.2	1.0
Education and health services										
Gross job gains	10,329	12,623	12,863	12,954	11,912	4.8	5.9	5.8	5.8	5.3
At expanding establishments ...	8,372	9,912	10,357	10,749	9,697	3.9	4.6	4.7	4.8	4.3
At opening establishments ...	1,957	2,711	2,506	2,205	2,215	0.9	1.3	1.1	1.0	1.0
Gross job losses	9,737	8,571	8,747	9,415	8,481	4.6	4.0	4.0	4.2	3.8
At contracting establishments ...	7,670	6,712	6,650	7,110	6,499	3.6	3.1	3.0	3.2	2.9
At closing establishments ...	2,067	1,859	2,097	2,305	1,982	1.0	0.9	1.0	1.0	0.9
Net employment change ²	592	887	4,034	3,402	3,431	0.2	0.4	1.9	1.5	1.5
Leisure and hospitality										
Gross job gains	13,066	15,793	15,983	15,916	15,762	7.6	9.2	9.2	9.0	8.7
At expanding establishments ...	9,843	11,945	13,247	11,943	11,572	5.7	7.0	7.6	6.8	6.4
At opening establishments ...	3,223	3,848	2,736	3,973	4,190	1.9	2.2	1.6	2.2	2.3
Gross job losses	14,097	13,569	14,034	13,592	11,973	8.3	7.9	8.1	7.7	6.7
At contracting establishments ...	11,414	11,063	11,113	10,512	9,887	6.7	6.4	6.4	6.0	5.5
At closing establishments ...	2,683	2,506	2,921	3,080	2,086	1.6	1.5	1.7	1.7	1.2
Net employment change ²	3,137	-637	1,838	2,078	3,789	1.8	-0.4	1.1	2.6	2.0
Other services ³										
Gross job gains	2,862	3,451	3,133	3,291	3,168	8.1	9.7	8.5	8.8	8.4
At expanding establishments ...	2,190	2,197	2,307	2,370	2,348	6.2	6.2	6.3	6.3	6.2
At opening establishments ...	672	1,254	826	921	820	1.9	3.5	2.2	2.5	2.2
Gross job losses	2,873	2,507	2,456	2,756	2,555	8.2	7.1	6.7	7.4	6.8
At contracting establishments ...	2,097	1,944	1,907	1,965	1,918	6.0	5.5	5.2	5.3	5.1
At closing establishments ...	776	563	549	791	637	2.2	1.6	1.5	2.1	1.7
Net employment change ²	949	155	867	592	613	2.7	0.4	2.4	1.6	1.6

Footnotes:

(1) Includes unclassified sector not shown separately.

(2) The net employment change is the difference between total gross job gains and total gross job losses.

(3) Except public administration.

This workforce product was funded by a grant awarded by the U.S. Department of Labor's Employment and Training Administration. This product was created by the recipient and does not necessarily reflect the official position of the U.S. Department of Labor. The U.S. Department of Labor makes no guarantees, warranties, or assurances of any kind, express or implied, with respect to such information, including any information on linked sites and including, but not limited to, accuracy of the information or its completeness, timeliness, usefulness, adequacy, continued availability, or ownership. This product is copyrighted by the institution that created it. Internal use by an organization and/or personal use by an individual for non-commercial purposes is permissible. All other uses require the prior authorization of the copyright owner.