

# OKLAHOMA TRANSPORTATION COMMISSION

**At Large – Chairman, Gene McKown, Norman (405) 364-1152**

**District 1 – Member Bob Coburn, Muskogee, (918) 869-7495**

Adair, Cherokee, Haskell, McIntosh, Muskogee, Okmulgee, Sequoyah, Wagoner

**District 2 – Member, James L. Grimsley, Calera, (405) 514-7365**

Atoka, Bryan, Choctaw, Latimer, LeFlore, McCurtain, Marshall, Pittsburg, Pushmataha

**District 3 – Member, T.W. Shannon, Oklahoma City, (405) 521-2701**

Coal, Cleveland, Garvin, Hughes, Johnston, Lincoln, McClain, Okfuskee, Pontotoc, Pottawatomie, Seminole

**District 4 – Member Don Freymiller, Oklahoma City, (405) 792-8000**

Canadian, Garfield, Grant, Kay, Kingfisher, Logan, Noble, Oklahoma, Payne

**District 5 – Member, David Dyson, Elk City, (580) 225-0450**

Beckham, Blaine, Custer, Dewey, Greer, Harmon, Jackson, Kiowa, Roger Mills, Tillman, Washita

**District 6 – Member Bobby J. Alexander, Woodward, (580) 254-3232**

Alfalfa, Beaver, Cimarron, Ellis, Harper, Major, Texas, Woods, Woodward

**District 7 – Member, Stephen LaForge, Chickasha, (405) 222-3050**

Caddo, Carter, Comanche, Cotton, Grady, Jefferson, Love, Murray, Stephens

**District 8 – Vice-Chairman, Member Robert Peterson, Tulsa (918) 281-2673**

Craig, Creek, Delaware, Mayes, Nowata, Osage, Ottawa, Pawnee, Rogers, Tulsa, Washington

**Secretary of Transportation – Tim J. Gatz (405) 425-3602**

## Oklahoma Department of Transportation

Executive Director	Tim J. Gatz	(405) 522-1800
Deputy Director	Dawn Sullivan	(405) 521-4768
Chief Engineer	Brian Taylor	(405) 521-2701
Chief Financial Officer	Chelley Hilmes	(405) 521-2591
Director of Operations	Shawn Davis	(405) 521-4675
Director of Engineering	Tim Tegeler	(405) 521-6916
Director of Project Delivery	Rick Johnson	(405) 522-6000
Director of Strategic Communications	Jessica Brown	(405) 521-6000
General Counsel	Sarah Penn	(405) 521-2630
Bridge Division	Justin Hernandez	(405) 521-2606
Comptroller		(405) 522-7468
Construction Division Engineer	John Leonard	(405) 521-2561
Contract Compliance Division	Jennifer Hankins	(405) 521-2072
Environmental Programs Division	Joe Brutsche	(405) 521-3050
Facilities Management Division	Ken Phillips	(405) 522-7605
Human Resources Division	Scott Lange	(405) 521-2194
Lake/Industrial Access Programs	Mitch Surrect	(405) 522-0290
Local Government Division	Shelly Williams	(405) 521-2553
Maintenance Division	Taylor Henderson	(405) 521-2557
Materials Division	Matt Romero	(405) 521-2677
Multi-Modal Division	Jared Schwennesen	(405) 521-4203
Office Engineer	Anthony Delce	(405) 521-2625
Office Services	Jamie Bleeker	(405) 521-2587
Operations Review & Evaluation Division	Holly Lowe	(405) 521-4708
Procurement	Brad Smith	(405) 522-2451
Project Management Division	Daniel Nguyen	(405) 522-3618
Right-of-Way Division	Robert Blackwell	(405) 521-2661
Roadway Design	Randy Woods	(405) 521-2695
Survey Division	Kyle King	(405) 521-2621
Traffic Engineering Division	Lauren January	(405) 521-2861
Transportation Quality Engineer	Matthew Swift	(405) 227-2872

## ODOT Field Districts

<b>Location and District Engineer</b>	<b>Phone</b>	<b>Fax</b>
Dist. 1, Muskogee, Chris Wallace	(918)687-5407	(918) 687-9955
Dist. 2, Antlers, Anthony Echelle	(580)298-3371	(580) 298-6152
Dist. 3, Ada, Ron Brown	(580)332-1526	(580) 332-0261
Dist. 4, Perry, Trenton January	(580)336-7340	(580) 336-7350
Dist. 5, Clinton, Brent Almquist	(580)323-1431	(580) 323-1430
Dist. 6, Buffalo, Ron McDaniel	(580)735-2561	(580) 735-2248
Dist. 7, Duncan, Jay Earp	(580)255-7586	(580) 255-5064
Dist. 8, Tulsa, Randle White	(918)838-9933	(918) 832-9074



## AGENDA FOR THE TRANSPORTATION COMMISSION MEETING

**DATE:** Monday, January 9, 2023  
**TIME:** 10:30 a.m.  
**PLACE:** Commission Meeting Room  
ODOT Central Office  
200 NE 21<sup>st</sup> Street  
Oklahoma City, OK 73105

---

The Oklahoma Transportation Commission's meeting on Monday, January 9th will be held with a quorum of Commissioners present at the Oklahoma Department of Transportation Central Office.

The Oklahoma Transportation Commission Meeting is open to the general public, but it is also available to watch through the link listed below:

- **To watch:**

Public access meeting link: <http://www.ustream.tv/channel/odot-monthly-commission-meeting>  
Make sure the volume on your PC (or other device) and the Ustream volume are turned up.

This meeting will be electronically recorded and audio livestreamed from 200 NE 21st St., Oklahoma City, OK 73105 and the phone number is 405-522-8000.

**Public Access to complete Commission Packet:** <https://www.odot.org/tcomm/tcmeetings2022.htm>

**ITEMS TO BE PRESENTED BY COMMISSION CHAIRMAN**

Call to Order

Roll Call – Commission Secretary

**ANNOUNCEMENTS AND PRESENTATIONS**

American Concrete Pavement Association honors 2 ODOT Projects in District II with National Silver Award – Mr. Gatz

Introduction of the new Comptroller – Ms. Hilmes

**ITEMS TO BE PRESENTED BY THE SECRETARY TO THE COMMISSION**

1. **Approval of the Minutes of the Transportation Commission Meeting of December 5, 2022**

**CONSENT DOCKET TO BE PRESENTED BY COMMISSION CHAIRMAN**

2. **Speed Zone Revisions - Ms. January**

a) **Commission District VI – Multiple Locations**

1. Texas County – Along rural US-54 including the Town of Tyrone for 14.24 miles

3. **Land Sales – Mr. Phillips**

a) McClain County – District III – located along the north side of US-62, at the northeast corner of North Jefferson Avenue in the City of Blanchard, OK - \$12,001.00

b) Tulsa County – District VIII – located along the north side of I-44, at the northwest corner of South Victor Avenue and East Skelly Drive in the City of Tulsa, OK - \$172,501.00

**END OF CONSENT DOCKET**

---

**ITEMS TO BE PRESENTED BY DIRECTOR OF ENGINEERING – Mr. Tegeler**

4. **Engineering Contracts**

a) Statewide – All Districts - On-Demand Public Involvement

CI-2409A	Blanton & Associates, Inc.
CI-2409B	CP&Y, Inc.
CI-2409C	Poe & Associates, Inc.

The aggregate not to exceed for these three (3) contracts is \$750,000.00

b) Lincoln County – District III – to prepare construction plans for SH-66: over SLWC Railroad, 0.9 miles east of junction SH-18

CI-2402	CP&Y, Inc.	\$594,815.00
---------	------------	--------------

**5. Engineering Contract Supplements**

**a) Statewide – All Districts – On-System Bridge Inspections**

CI-2298A	Supplement 5	Burgess & Niple, Inc.
CI-2298B	Supplement 3	CEC Corporation

The total aggregate increase for these Contract supplements is \$500,000.00

**b) Statewide – All Districts – On-Demand Project Reconnaissance Data Collection**

CI-2351A	Supplement 2	BKL, Inc.
CI-2351B	Supplement 2	Garver, LLC
CI-2351C	Supplement 3	Half Associates, Inc.
CI-2351D	Supplement 2	Native Strategies, LLC
CI-2351E	Supplement 2	Parkhill, Smith & Cooper, Inc.
CI-2351F	Supplement 2	Poe & Associates, Inc.
CI-2351G	Supplement 2	Professional Engineering Consultants, P.A.
CI-2351H	Supplement 2	The Schemmer Associates, Inc.
CI-2351I	Supplement 2	Walter P. Moore and Associates, Inc.
CI-2351J	Supplement 2	White Hawk Engineering & Design, LLC

The total aggregate increase for these Contract supplements is \$2,500,000.00.

**c) Statewide – All Districts – On-Demand State Bridge Rehabilitation**

CI-2360A	Supplement 1	CEC Corporation
CI-2360B	Supplement 1	CONSOR Engineers, LLC
CI-2360C	Supplement 1	CP&Y, Inc.
CI-2360D	Supplement 2	Freese and Nichols, Inc.
CI-2360E	Supplement 2	HNTB Corporation
CI-2360F	Supplement 1	Olsson, Inc.
CI-2360G	Supplement 1	Purkeypile Engineering, LLC
CI-2360H	Supplement 1	Tetra Tech, Inc.

The total aggregate increase for these Contract supplements is \$2,000,000.00.

**d) Okfuskee County – District III – this supplement is for additional engineering to develop final construction plans for SH-84: over Bad and Unnamed Creeks, 3.8 and 4.8 miles east of US-75**

CI-2269E	Supplement 2	Tetra Tech, Inc.	\$37,900.00
----------	--------------	------------------	-------------

**e) Washita County – District V – this supplement is for additional engineering to develop final construction plans for SH-152: begin 5.8 miles east of the Beckham County line, extending east 5.0 miles**

EC-1504A	Supplement 1	MKEC Engineering, Inc.	\$12,721.00
----------	--------------	------------------------	-------------

**ITEMS TO BE PRESENTED BY CONSTRUCTION DIVISION ENGINEER – Mr. Leonard**

**6. Change Orders with Cumulative Total of \$75,000.00 or Less – Information Only**

**a) Cleveland County - I-35 - SAP-3500(122)ES / 35342(04), \$6,900.00, 10.16%**

- b) Garfield County - County Road - STP-224C(077)CI / 32843(04), \$2,972.75, 0.08%
- c) Grady County - SH-39 - STP-226B(104)PM / 20302(07), \$8,050.00, 0.08%
- d) Hughes County - County Road - CIRB-232C(067)RB / 27886(04), \$890.58, 0.01%
- e) Leflore County - SH-31 - SBR-240C(073)SB / 29737(04), \$24,764.46, 2.63%
- f) McClain County - I-35 - NHPPI-3500-(133)PM / 35644(04), \$36,709.63, 1.38%
- g) Muskogee County - US-62B - NHPP-251N(139)PM / 35735(04), \$7,480.00, 1.09%
- h) Osage County - SH-20 - NHPP-257N(073)PM / 27168(04), \$14,632.24, -0.28% Underrun
- i) Pawnee County - SH-99 - STP-259B(064)PM / 29690(04), \$28,793.64, 2.40%
- j) Pontotoc County - SH-99 - STP-CRRS(020)PM / 33339(04), #2, \$5,629.65, 0.49%
- k) Pontotoc County - SH-99 - STP-CRRS(020)PM / 33339(04), #4, \$2,394.56, 0.21%
- l) Stephens County - DUNCAN BYPASS - SSP-269N(097)PM / 34250(07), \$7,500.00, 0.41%
- m) Tulsa County - US-75 - SBR-014N(117)SB / SAP-014N(121)ES / 33802(04), \$16,550.29, -0.65% Underrun

Total amount of presented Change Orders: \$100,902.74

#### 7. Change Orders with Cumulative Total Greater than \$75,000.00

- a) Beckham County - I-40 - NHPPI-4000-(098)PM / 31001(04), \$290,167.71, -3.89% Underrun
- b) Bryan County - US-69 - BSAP-207N(012)FM / BSAP-207C(102)FM / SSP-013N(182)PM / 25909(17), \$50,220.42, 0.28%
- c) Canadian County - I-40 - SBR-4000(146)SB / 33420(04), \$149,860.58, 12.10%
- d) Comanche County - I-44 - SBR-4400(080)SB / 33890(04), #3, \$81,239.22, 1.87%
- e) Comanche County - I-44 - SBR-4400(080)SB / 33890(04), #5, \$42,299.64, 0.98%
- f) Dewey County - SH-34 - STP-222B(039)PM / 30333(04), \$6,410.10, 0.04%
- g) Grady County - SH-37 - SSR-226C(099)SR / 34416(04), #2, \$19,677.44, 1.31%
- h) Grady County - SH-37 - SSR-226C(099)SR / 34416(04), #4, \$515.13, 0.03%
- i) Kay County - I-35 - NHPPI-3500-(101)PM / 29845(04), \$1,680.80, 0.02%
- j) Lincoln County - US-177 - MC-241B(087)MD / 35947(04), \$12,607.91, 1.70%
- k) McIntosh County - I-40 - NHPPI-4000-(066)PM / 27958(04), \$790,612.62, 5.03%
- l) Murray County - County Road - CIRB-250D(032)RB / 27855(04), \$272,309.32, 3.35%
- m) Oklahoma County - County Road - STP-255D(506)CO / 32884(04), \$11,377.71, 1.14%
- n) Oklahoma County - City Street - SBR-4000(124)SB / 34233(04), #7, \$2,500.00, 0.19%
- o) Oklahoma County - City Street - SBR-4000(124)SB / 34233(04), #8, \$14,026.10, 1.09%
- p) Osage County - SH-99 - STP-257B(090)PM / 29686(04), \$40,990.05, 1.01%
- q) Payne County - US-177 - STP-260B(056)PM / 29860(04), \$114,727.58, 0.65%
- r) Rogers County - SH-20 - STP-266B(081)PM / 27031(04), \$1,327,098.09, 3.01%
- s) Rogers County - SH-20 - STP-266N(094)PM / 34222(04), \$399,147.57, 8.66%
- t) Texas County - SH-136 - STP-270C(041)PM / 24241(07), \$4,500.00, 0.04%
- u) Tulsa County - US-169 - NHPP-030N(080)3P / 33783(04), \$500,815.28, 14.62%
- v) Tulsa County - I-44 - NHPPI-4400(054)(077)PM / 33788(04), \$137,139.90, 0.16%

Total amount of presented Change Orders: \$3,689,587.75

### ITEMS TO BE PRESENTED BY THE COMPTROLLER DIVISION

#### 8. Proposed Bid Openings – Mr. Hackney, Project Funding Manager

- a) Final February, 2023 Proposed Bid Opening
- b) Tentative March, 2023 Proposed Bid Opening
- c) Tentative April, 2023 Proposed Bid Opening

**ITEM TO BE PRESENTED BY THE DIRECTOR OF FINANCE**

**9. FY 2023 Budget Revisions – Ms. Hilmes**

a) Request to increase the Highway Program using carry over funds:

1. Federal funds

a) Highway Construction	\$ 203,579,682
b) City Projects	24,400,054
c) Right of Way	34,604,830
d) CRRSAA City Projects	<u>15,813,461</u>
Total	\$ 278,398,027

2. State funds

a) Engineering Contracts	\$ 16,841,468
b) Highway Construction	91,873,639
c) Right of Way	<u>10,954,092</u>
Total	\$ 119,669,199

b) Request to increase the Highway Maintenance Program using state carryover funds.

1. Asset Preservation	\$ 12,834,009
2. Building Replacement Program	1,616,970
3. Field Building Maintenance	<u>7,884,965</u>
Total	\$ 22,335,944

c) Request to increase the Right of Way Program by \$90,000,000 re-budgeting prior year reserves for existing Right of Way / Utilities projects.

d) Request to increase the Lake and Industrial Access Program by \$8,258,000 utilizing state carryover funds.

e) Request to increase the Material Certification Program by \$145,648 utilizing state carryover funds.

f) Request to increase the County Program fund using carry over funds:

1. Federal Aid	\$ 6,322,231
2. CIRB Program	<u>6,957,063</u>
Total	\$13,279,294

g) Request to increase the Transit Program by \$1,651,158 utilizing federal CARES Act carryover funds.

h) Request to increase the Rail Program by \$4,975,382 utilizing federal carryover funds.

**ITEM TO BE PRESENTED BY THE OFFICE ENGINEER – Mr. Delce**

**10. Awards**

December 22, 2022 – Regular Bid Opening

**ITEM TO BE PRESENTED BY THE DIRECTOR – Mr. Gatz**

**11. Director’s Report**

**Information Only:** No Commission action required.

**ITEM TO BE PRESENTED BY COMMISSION CHAIRMAN**

**12. Adjournment Motion**

---

*The Oklahoma Department of Transportation (ODOT) ensures that no person or groups of persons shall, on the grounds of race, color, sex, religion, national origin, age, disability, retaliation or genetic information, be excluded from participation in, be denied the benefits of, or be otherwise subjected to discrimination under any and all programs, services, or activities administered by ODOT, its recipients, sub-recipients, and contractors. To request an accommodation please contact the ADA Coordinator at 405-521-4140 or the Oklahoma Relay Service at 1-800-722-0353. If you have any ADA or Title VI questions email [ODOT-ada-titlevi@odot.org](mailto:ODOT-ada-titlevi@odot.org).*

## **FOR PRESENTATION AT COMMISSION MEETING JANUARY 9, 2023**

### **SUBJECT: District 2 earns trio of honors from American Concrete Pavement Association**

The national American Concrete Pavement Association recently awarded Silver status to two projects in District 2 during its Excellence in Concrete Pavement Awards. A US-69 pavement rehabilitation project near Kiowa in Pittsburg County in Southeastern Oklahoma was recognized in the Highway Overlays category while a US-69 southbound reconstruction project between Caney and Caddo in Atoka and Bryan counties was recognized in the Rural Divided Highway category. The latter also won Best in Show for Sustainability thanks to the contractor's practices to reduce material waste and emissions on the construction site.

The awards are shared with the Contractor on both projects, Duit Construction, and the Pittsburg County project was also shared with Engineering Contractor CEC Inc.

The ACPA is the national trade association for the concrete pavement industry and is involved in the design, construction and preservation of concrete pavements.

The Excellence in Concrete Pavement Awards recognize winners in 15 categories and are determined by concrete pavement professionals; the awards recognize Contractors, Engineers and Project Owners.



**FOR PRESENTATION AT COMMISSION MEETING OF JANUARY 9, 2023**

**AGENDA ITEM NO:                    2**

**SUBJECT:                                Speed Zone Revisions**

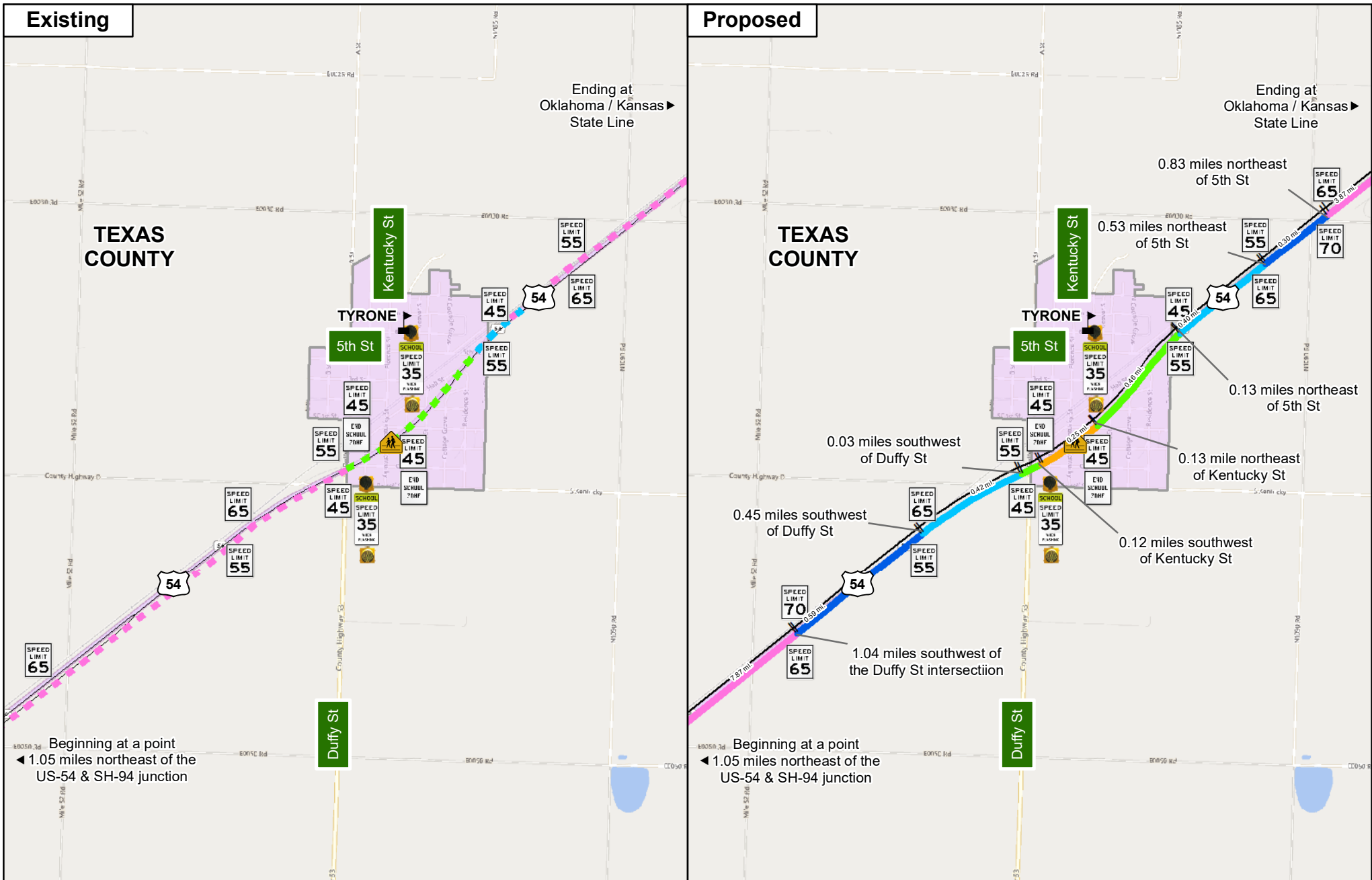
**a)        One Location – Commission District VI**

		Length
1.	<u>Along US-54 in Texas County including the Town of Tyrone</u>	
70 MPH	Beginning at a point 1.05 miles northeast of the US-54 & SH-94 junction, extending northeasterly 7.87 miles to a point 1.04 miles southwest of the Duffy St intersection.	
	<u>PRESENTLY ZONED 70 &amp; 70 MPH DAY &amp; 60 MPH NIGHT</u> <u>PRESENTLY POSTED 70 &amp; 65 MPH (CHANGE)</u>	7.87 miles
65 MPH	Beginning at a point 1.04 miles southwest of the Duffy St intersection, extending northeasterly 0.59 miles to a point 0.45 miles southwest of Duffy St.	
	<u>PRESENTLY ZONED 70 MPH DAY &amp; 60 MPH NIGHT</u> <u>PRESENTLY POSTED 65 MPH (ZONING CHANGE)</u>	0.59 miles
55 MPH	Beginning at a point 0.45 miles southwest of the Duffy St intersection, extending northeasterly 0.42 miles to a point 0.03 miles southwest of Duffy St.	
	<u>PRESENTLY ZONED 70 MPH DAY &amp; 60 MPH NIGHT</u> <u>PRESENTLY POSTED 55 MPH (ZONING CHANGE)</u>	0.42 miles
45 MPH	Beginning at a point 0.03 miles southwest of the Duffy St intersection, extending 0.79 miles northeasterly to a point 0.13 miles northeast of 5 <sup>th</sup> St.	
35 MPH (School)	<u>SCHOOL ZONE (0.25 Mile)</u> Beginning at a point 0.12 miles southwest of Kentucky St, extending northeasterly 0.25 miles to a point 0.13 mile northeast of Kentucky St.  Effective only on regular school days, From 7:30 AM to 8:15 AM and From 2:45 PM to 3:30 PM	
	<u>PRESENTLY ZONED 70 MPH DAY &amp; 60 MPH NIGHT,</u> <u>45 MPH, 55 MPH</u>	

	<u>POSTED 45/55 MPH (CHANGE)</u>	0.79 miles
55 MPH	Beginning at a point 0.13 mile northeast of the 5 <sup>th</sup> St Intersection, extending northeasterly 0.40 mile to a point 0.53 miles northeast of 5 <sup>th</sup> St.	
	<u>PRESENTLY ZONED 70 MPH DAY &amp; 60 MPH NIGHT &amp; 55 MPH</u>	
	<u>PRESENTLY POSTED 55 MPH (ZONING CHANGE)</u>	0.40 miles
65 MPH	Beginning at a point 0.53 miles northeast of the 5th St intersection, extending northeasterly 0.30 miles to a point 0.83 miles northeast of 5 <sup>th</sup> St.	
	<u>PRESENTLY ZONED 70 MPH DAY &amp; 60 MPH NIGHT</u>	
	<u>PRESENTLY POSTED 65 MPH (ZONING CHANGE)</u>	0.30 miles
70 MPH	Beginning at a point 0.83 miles northeast of the 5th St intersection, extending northeasterly 3.87 miles to the Oklahoma / Kansas state line.	
	<u>PRESENTLY ZONED 70 MPH DAY &amp; 60 MPH NIGHT</u>	
	<u>PRESENTLY POSTED 65 MPH (CHANGE)</u>	3.87 miles
		=====
	TOTAL APPROXIMATE LENGTH ZONED	14.24 miles

Engineering studies have been conducted at these locations in accordance with current Department of Transportation Rules, Regulations, and Policies.

**Commission Approval is Recommended**



**Legend**

- Existing 70/60 mph
- Existing 55 mph
- Existing 45 mph
- Proposed 70 mph
- Proposed 65 mph
- Proposed 55 mph
- Proposed 45 mph
- Proposed 35 mph School Zone

- Highways
- Cities
- Crossing
- School



# US-54 Tyrone Speed Zone Revision

**FOR PRESENTATION AT THE JANUARY 9, 2023 COMMISSION MEETING**

**AGENDA ITEM NO.:**       **3(a)**

**SUBJECT:**               Land Sale, District III, 13574(05), Part of Parcel 37,  
Part of Lots 21 & 22, Block 65, Original Townsite of  
Blanchard, McClain County.

**LOCATION:**               Located along the north side of U.S. Highway No. 62, at the  
northeast corner of North Jefferson Avenue in the City of  
Blanchard, OK

In 2005, the Oklahoma Department of Transportation acquired a tract in fee totaling 0.32 acres of right-of-way as a total taking on the above referenced project.

The Department received a request from Mark Harris requesting the Department to dispose of any excess portion of Parcel 37 of the above mentioned project. The Department has determined that 0.16 acres of Parcel 37 is surplus to the Department's needs.

Bid packets were prepared and sent out with the minimum bid based on the current fair market value of \$7,200.00 for the 0.16 acre property. On December 8, 2022 the Department received and opened three (3) bids. The Department accepted the high bid of \$12,001.00 for the 0.16 acres from Comrade Services, LLC.

We recommend approval of this sale.



Limits of No Access
Existing Right-of-Way
Requested Area
Easement



**OKLAHOMA**  
Transportation

# LOCATION MAP

US-62 | 13574(05) | McClain County

**SUBJECT PROPERTY:**  
**SURPLUS LAND:**  
**SALE PRICE:**

Part of Parcel 37  
≈ 0.16 acres  
\$12,001.00

## FOR PRESENTATION AT THE JANUARY 9, 2023 COMMISSION MEETING

**AGENDA ITEM NO.:** 3(b)

**SUBJECT:** Land Sale, District VIII, 06374(59), Part of Parcel 42, Part of Lots 8 & 11, Perry's 27207 Subdivision to the City of Tulsa, Tulsa County

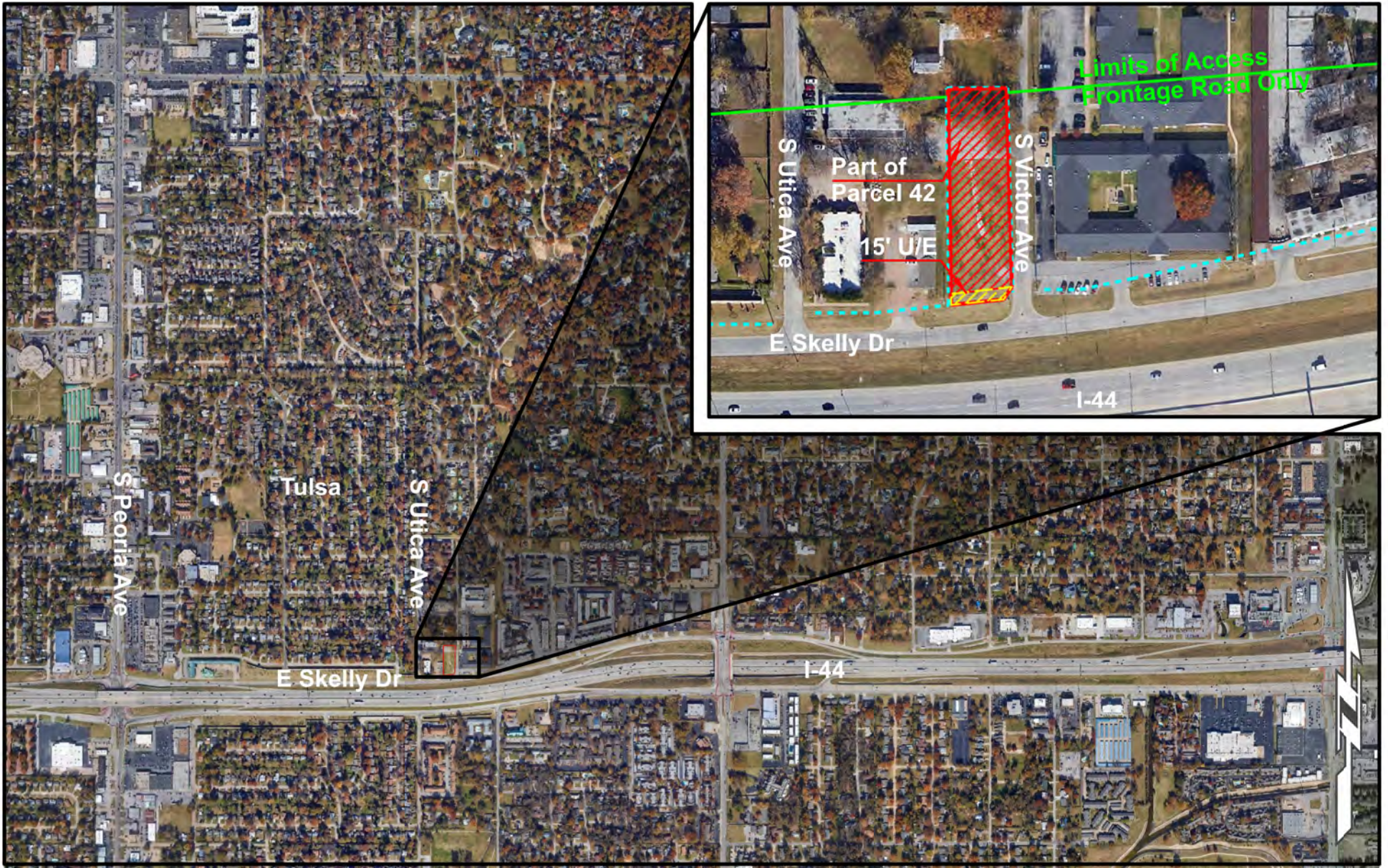
**LOCATION:** Located along the north side of I-44, at the northwest corner of South Victor Avenue and East Skelly Drive in the City of Tulsa, OK.

In 2007, the Oklahoma Department of Transportation acquired a tract as a total taking of 0.57 acres of right-of-way and access rights on the above referenced project.

The Department received a request from the Laura Keith, asking the Department to dispose of a portion of Parcel 42 on the above-referenced project. Laura Keith is requesting the property for expansion of her abutting business. The Department has now determined that the combined 0.53 acres of Parcel 42 is surplus to the Department's needs.

Bid packets were prepared and sent out with the minimum bid based on the current fair market value of \$128,750.00 for the 0.53 acre property. On December 8, 2022 the Department received and opened three (3) bids. The Department accepted the high bid of \$172,501.00 for the 0.53 acres from Comrade Services, LLC.

We recommend approval of this sale.



Limits of No Access	Existing Right-of-Way	Requested Area	Easement
---------------------	-----------------------	----------------	----------

 <b>OKLAHOMA</b> Transportation	<h1>LOCATION MAP</h1> <p>I-44   06375(59)   Tulsa County</p>	<b>SUBJECT PROPERTY:</b>	Part of Parcel 42
		<b>SURPLUS LAND:</b>	≈ 0.53 acres
		<b>SALE PRICE:</b>	\$172,501.00

**FOR PRESENTATION AT THE COMMISSION MEETING ON JANUARY 9, 2023**

**AGENDA ITEM NO: 4**

**SUBJECT: Engineering Contracts**

**a) Statewide – All Districts – On-Demand Public Involvement (CI-2409)**

The Department has selected three (3) firms to provide Public Involvement services. These firms may be utilized on an as-needed basis in support of the Department's staff.

CI-2409A	Blanton & Associates, Inc.
CI-2409B	CP&Y, Inc.
CI-2409C	Poe & Associates, Inc.

The aggregate not to exceed amount for these three (3) contracts is \$750,000.00 and will be task driven for the on-call services and agreed upon by the Consulting Firm and Department as needed.

**b) Lincoln County – District III (CI-2402)**

The Department has selected CP&Y, Inc. to prepare construction plans for SH-66: over SLWC Railroad, 0.9 miles east of junction SH-18. Services to include environmental, geotechnical investigations, pavement design, utilities, preliminary and final design and will culminate in the submittal of plans, specifications and estimates, (PS&E).

CI-2402	CP&Y, Inc.
Total Not to Exceed Amount	\$594,815.00

Project JP-35217(04) is included in the 8 year construction work plan with a scheduled let date in FFY 2029. The total estimate for construction of this project is \$3,300,000.00.

**APPROVAL IS RECOMMENDED**



**FOR PRESENTATION AT THE COMMISSION MEETING ON JANUARY 9, 2023**

**AGENDA ITEM NO: 5**

**SUBJECT: Engineering Contract Supplements**

**a) Statewide – All Districts – On-System Bridge Inspections (CI-2298, Supplement)**

The Department previously selected four (4) consulting firms to provide On-System Bridge Inspection services.

CI-2298A Supplement 5	Burgess & Niple, Inc.
CI-2298B Supplement 3	CEC Corporation

The total aggregate increase for these Contract supplements is \$500,000.00.

The aggregate not to exceed amount for these four (4) contracts is \$1,700,000.00.

**b) Statewide – All Districts – On-Demand Project Reconnaissance Data Collection (CI-2351, Supplement)**

The Department previously selected ten (10) consulting firms to provide Project Reconnaissance Data Collection services.

CI-2351A Supplement 2	BKL, Inc.
CI-2351B Supplement 2	Garver, LLC
CI-2351C Supplement 3	Halff Associates, Inc.
CI-2351D Supplement 2	Native Strategies, LLC
CI-2351E Supplement 2	Parkhill, Smith & Cooper, Inc.
CI-2351F Supplement 2	Poe & Associates, Inc.
CI-2351G Supplement 2	Professional Engineering Consultants, P.A.
CI-2351H Supplement 2	The Schemmer Associates, Inc.
CI-2351I Supplement 2	Walter P. Moore and Associates, Inc.
CI-2351J Supplement 2	White Hawk Engineering & Design, LLC

The total aggregate increase for these Contract supplements is \$2,500,000.00.

The aggregate not to exceed amount for these ten (10) contracts is \$7,500,000.00 and will be task driven for the on-call services and agreed upon by the Consulting Firm and Department as needed.

**c) Statewide – All Districts - On-Demand State Bridge Rehabilitation (CI-2360 Supplement)**

The Department previously selected eight (8) consulting firms to provide State Bridge Rehabilitation services.

CI-2360A Supplement 1	CEC Corporation
CI-2360B Supplement 1	CONSOR Engineers, LLC
CI-2360C Supplement 1	CP&Y, Inc.
CI-2360D Supplement 2	Freese and Nichols, Inc.
CI-2360E Supplement 2	HNTB Corporation
CI-2360F Supplement 1	Olsson, Inc.
CI-2360G Supplement 1	Purkeypile Engineering, LLC
CI-2360H Supplement 1	Tetra Tech, Inc.

The total aggregate increase for these Contract supplements is \$2,000,000.00.

The aggregate not to exceed amount for these eight (8) contracts is \$4,000,000.00 and will be task driven for the on-call services and agreed upon by the Consulting Firm and Department as needed.

**d) Okfuskee County – District III (CI-2269E, Supplement 2)**

The Department previously authorized Tetra Tech, Inc. to prepare construction plans for SH-84: over Bad and Unnamed Creeks, 3.8 and 4.8 miles east of US-75. This supplement is for additional engineering to develop final construction plans.

CI-2269E	Tetra Tech, Inc.
Supplement Not to Exceed Amount	\$37,900.00

This brings the total engineering contract cost, including this supplement to \$510,510.00.

JP-33845(04) is included in the 8 year construction work plan with a scheduled let date in FFY 2027. Total estimate for construction of this project is \$4,066,000.00.

**e) Washita County – District V (EC-1504A, Supplement 1)**

The Department previously authorized MKEC Engineering, Inc. to perform preliminary engineering and prepare construction plans for SH-152: begin 5.8 miles east of the Beckham County line, extending east 5.0 miles. This supplement is for additional engineering to develop final construction plans.

EC-1504A	MKEC Engineering, Inc.
Supplement Not to Exceed Amount	\$12,721.00

This brings the total engineering contract cost, including this supplement to \$572,691.00.

JP-24352(10) is included in the 8 year construction work plan with a scheduled let date in FFY 2023. Total estimate for construction of this project is \$7,510,623.00.

**APPROVAL IS RECOMMENDED**

**Change Orders with Cumulative Total of \$75,000 or Less (Information Only)**

**JANUARY 09, 2023 Commission Meeting**

ITEM	COUNTY	PROJECT NUMBER	FED OVER	CONTRACT	JPN	CHANGE ORDER	UNDER/ OVER RUN
6A	CLEVELAND	SAP-3500(122)ES	<input type="checkbox"/>	220047	3534204	003	\$6,900.00
6B	GARFIELD	STP-224C(077)CI	<input type="checkbox"/>	200309	3284304	006	\$2,972.75
6C	GRADY	STP-226B(104)PM	<input type="checkbox"/>	220163	2030207	001	\$8,050.00
6D	HUGHES	CIRB-232C(067)RB	<input type="checkbox"/>	210208	2788604	003	\$890.58
6E	LEFLORE	SBR-240C(073)SB	<input type="checkbox"/>	210322	2973704	002	\$24,764.46
6F	MCCLAIN	NHPPI-3500-(133)PM	<input type="checkbox"/>	220168	3564404	004	\$36,709.63
6G	MUSKOGEE	NHPP-251N(139)PM	<input type="checkbox"/>	220259	3573504	001	\$7,480.00
6H	OSAGE	NHPP-257N(073)PM	<input type="checkbox"/>	210284	2716804	004	-\$14,632.24
6I	PAWNEE	STP-259B(064)PM	<input type="checkbox"/>	220139	2969004	003	\$28,793.64
6J	PONTOTOC	STP-CRRS(020)PM	<input type="checkbox"/>	210188	3333904	002	\$5,629.65
6K	PONTOTOC	STP-CRRS(020)PM	<input type="checkbox"/>	210188	3333904	004	\$2,394.56
6L	STEPHENS	SSP-269N(097)PM	<input type="checkbox"/>	220152	3425007	003	\$7,500.00
6M	TULSA	SBR-014N(117)SB / SAP-014N(121)ES	<input type="checkbox"/>	220072	3380204	002	-\$16,550.29

## Change Orders with Cumulative Total of \$75,000 or Less (Information Only)

**January 09, 2023 Commission Meeting**

<b>Project Number:</b>	SAP-3500(122)ES	<b>CO APPROVAL:</b>	Dec. 05, 2022	<b>AGENDA ITEM</b>
		<b>Contract ID:</b>	220047	<b>6A</b>
<b>Contractor :</b>	JLT CONTRACTING, LLC	<b>Job Piece No.:</b>	35342(04)	
		<b>Highway No.:</b>	I-35	
<b>Designer:</b>	OKLA. DEPT. OF TRANSPORTATION	<b>Div. / County.:</b>	03 / CLEVELAND	
<b>Description:</b>	SOUND BARRIER WALL REPAIR I-35: REPAIR VEHICLE IMPACT DAMAGE, 0.6 MILES SOUTH OF THE MAIN STREET INTERCHANGE IN NORMAN. PROJECT LENGTH = 0.010 MILE			
<b>Contract Amount:</b>	\$67,895.20	<b>Funds Available:</b>	\$74,795.20	<b>Funds Paid(%) :</b> 81%
<b>Change Order</b>	3	<b>Original Time Used:</b>	73%	<b>Revised Time Used:</b> 73%

Change Order No. 3 approves an additional appropriation in the amount of \$6,900.00.

Site Requirement: This change provides payment for the overrun of the construction traffic control pay items required to provide adequate direction to the traveling public during construction due to delays experienced by the contractor while waiting for the Department to provide an accurate paint color to match the existing sound wall.

<b>OVERRUN ITEMS</b>	<b>\$6,900.00</b>		
Drums	400.00 SD	\$3.00 /SD	\$1,200.00
Channelizer Cones	300.00 SD	\$3.00 /SD	\$900.00
Warning Lights (Type B)	500.00 SD	\$6.00 /SD	\$3,000.00
Warning Lights (Type C)	300.00 SD	\$6.00 /SD	\$1,800.00

<b>CHANGE ORDER ACTIONS</b>						
CHANGE ORDER NO.	(+ Overrun (-) Underrun Amount (\$)	%	Appropriated Amount (\$)	%	Supplemental Agreement Amount(\$)	%
1	\$0.00	0.00%	\$0.00	0.00%	\$0.00	0.00%
2	\$0.00	0.00%	\$0.00	0.00%	\$0.00	0.00%
3	\$6,900.00	10.16%	\$6,900.00	10.16%	\$0.00	0.00%
<b>TOTAL</b>	<b>\$6,900.00</b>	<b>10.16%</b>	<b>\$6,900.00</b>	<b>10.16%</b>	<b>\$0.00</b>	<b>0.00%</b>

## Change Orders with Cumulative Total of \$75,000 or Less (Information Only)

### January 09, 2023 Commission Meeting

<b>Project Number:</b>	STP-224C(077)CI	<b>CO APPROVAL:</b>	Dec. 06, 2022	<b>AGENDA ITEM</b>	
<b>Contractor :</b>	THE CUMMINS CONSTRUCTION CO., INC.	<b>Contract ID:</b>	200309	<b>6B</b>	
		<b>Job Piece No.:</b>	32843(04)		
		<b>Highway No.:</b>	COUNTY ROAD		
<b>Designer:</b>	CED #8	<b>Div. / County.:</b>	04 / GARFIELD		
<b>Description:</b>	GRADE, DRAIN, AND SURFACE COUNTY ROAD (EAST SOUTHGATE ROAD): FROM 0.1 MILES EAST OF THE US-81 JUNCTION, EXTEND EAST IN ENID. PROJECT LENGTH = 1.820 MILES				
<b>Contract Amount:</b>	\$3,752,182.74	<b>Funds Available:</b>	\$3,778,835.49	<b>Funds Paid(%) :</b>	90%
<b>Change Order</b>	6	<b>Original Time Used:</b>	159%	<b>Revised Time Used:</b>	96%

Change Order No. 6 approves a supplemental agreement and an additional appropriation in the amount of \$2,972.75.

Site Requirement: This change provides payment for the additional work required to remove a portion of recently placed riprap to improve the flow out of multiple cross drains due to the riprap not being able to be installed as deeply as planned to avoid disturbing a gas line.

**NEW ITEM**

**\$2,972.75**

Removal of Existing Riprap 1.00 LS \$2,972.75 /LS \$2,972.75

CHANGE ORDER ACTIONS						
CHANGE ORDER NO.	(+ Overrun (-) Underrun Amount (\$)	%	Appropriated Amount (\$)	%	Supplemental Agreement Amount(\$)	%
1	\$0.00	0.00%	\$0.00	0.00%	\$0.00	0.00%
2	\$23,680.00	0.63%	\$23,680.00	0.63%	\$23,680.00	0.63%
3	\$0.00	0.00%	\$0.00	0.00%	\$0.00	0.00%
4	\$0.00	0.00%	\$0.00	0.00%	\$0.00	0.00%
5	\$0.00	0.00%	\$0.00	0.00%	\$0.00	0.00%
6	\$2,972.75	0.08%	\$2,972.75	0.08%	\$2,972.75	0.08%
<b>TOTAL</b>	<b>\$26,652.75</b>	<b>0.71%</b>	<b>\$26,652.75</b>	<b>0.71%</b>	<b>\$26,652.75</b>	<b>0.71%</b>

## Change Orders with Cumulative Total of \$75,000 or Less (Information Only)

### January 09, 2023 Commission Meeting

<b>Project Number:</b>	STP-226B(104)PM	<b>CO APPROVAL:</b>	Nov. 14, 2022	<b>AGENDA ITEM</b>
		<b>Contract ID:</b>	220163	<b>6C</b>
<b>Contractor :</b>	SILVER STAR CONSTRUCTION COMPANY, INC.	<b>Job Piece No.:</b>	20302(07)	
		<b>Highway No.:</b>	SH-39	
<b>Designer:</b>	OKLA. DEPT. OF TRANSPORTATION	<b>Div. / County.:</b>	07 / GRADY	
<b>Description:</b>	GRADE, DRAIN, AND SURFACE SH-39: FROM 2.9 MILES WEST OF THE SH-76 JUNCTION, EXTEND EAST NEAR DIBBLE. PROJECT LENGTH = 2.75 MILES			
<b>Contract Amount:</b>	\$10,679,999.00	<b>Funds Available:</b>	\$10,688,049.00	<b>Funds Paid(%) :</b> 7%
<b>Change Order</b>	1	<b>Original Time Used:</b>	9%	<b>Revised Time Used:</b> 9%

Change Order No. 1 approves a supplemental agreement and an additional appropriation in the amount of \$8,050.00.

Site Requirement: This change provides payment for the 4-inch painted traffic striping pay item required to provide temporary delineation to the traveling public by narrowing the driving lanes over concrete box extensions to perform the necessary tear-backs. This change extends the contract time fourteen days to complete this additional work.

<b>NEW ITEM</b>	<b>\$8,050.00</b>
Traffic Stripe (Paint) (4" Wide)	17,500.00 LF      \$0.46 /LF      \$8,050.00

CHANGE ORDER ACTIONS						
CHANGE ORDER NO.	(+ Overrun (-) Underrun Amount (\$)	%	Appropriated Amount (\$)	%	Supplemental Agreement Amount(\$)	%
1	\$8,050.00	0.08%	\$8,050.00	0.08%	\$8,050.00	0.08%
<b>TOTAL</b>	<b>\$8,050.00</b>	<b>0.08%</b>	<b>\$8,050.00</b>	<b>0.08%</b>	<b>\$8,050.00</b>	<b>0.08%</b>

## Change Orders with Cumulative Total of \$75,000 or Less (Information Only)

**January 09, 2023 Commission Meeting**

<b>Project Number:</b>	CIRB-232C(067)RB	<b>CO APPROVAL:</b>	Nov. 23, 2022	<b>AGENDA ITEM</b>
		<b>Contract ID:</b>	210208	<b>6D</b>
<b>Contractor :</b>	APAC-CENTRAL, INC.	<b>Job Piece No.:</b>	27886(04)	
		<b>Highway No.:</b>	COUNTY ROAD	
<b>Designer:</b>	CED #4	<b>Div. / County.:</b>	03 / HUGHES	
<b>Description:</b>	GRADE, DRAIN, AND SURFACE COUNTY ROAD (EW-148): FROM THE US-75 JUNCTION, EXTEND EAST NEAR GERTY. PROJECT LENGTH = 4.410 MILES			
<b>Contract Amount:</b>	\$6,449,777.00	<b>Funds Available:</b>	\$6,452,817.74	<b>Funds Paid(%) :</b> 65%
<b>Change Order</b>	3	<b>Original Time Used:</b>	85%	<b>Revised Time Used:</b> 85%

Change Order No. 3 approves an additional appropriation in the amount of \$890.58.

Site Requirement: This change provides payment for the overrun of the unclassified excavation pay item required to remove an area of unsuitable subgrade material discovered during construction.

**OVERRUN ITEM**

**\$890.58**

Unclassified Excavation	77.78 CY	\$11.45 /CY	\$890.58
-------------------------	----------	-------------	----------

CHANGE ORDER ACTIONS						
CHANGE ORDER NO.	(+ Overrun - Underrun Amount (\$)	%	Appropriated Amount (\$)	%	Supplemental Agreement Amount(\$)	%
1	\$0.00	0.00%	\$0.00	0.00%	\$0.00	0.00%
2	\$2,150.16	0.03%	\$2,150.16	0.03%	\$2,150.16	0.03%
3	\$890.58	0.01%	\$890.58	0.01%	\$0.00	0.00%
<b>TOTAL</b>	<b>\$3,040.74</b>	<b>0.05%</b>	<b>\$3,040.74</b>	<b>0.05%</b>	<b>\$2,150.16</b>	<b>0.03%</b>

## Change Orders with Cumulative Total of \$75,000 or Less (Information Only)

**January 09, 2023 Commission Meeting**

<b>Project Number:</b>	SBR-240C(073)SB	<b>CO APPROVAL:</b>	Nov. 22, 2022	<b>AGENDA ITEM</b>
		<b>Contract ID:</b>	210322	<b>6E</b>
<b>Contractor :</b>	ROBINSON CONSTRUCTION, LLC	<b>Job Piece No.:</b>	29737(04)	
		<b>Highway No.:</b>	SH-31	
<b>Designer:</b>	MACARTHUR ASSOCIATED CONSULTANTS	<b>Div. / County.:</b>	02 / LEFLORE	
<b>Description:</b>	BRIDGE REHABILITATION SH-31: OVER UNNAMED CREEK, 6.3 MILES WEST OF THE US-59 JUNCTION IN BOKOSHE. PROJECT LENGTH = 0.103 MILE			
<b>Contract Amount:</b>	\$942,909.43	<b>Funds Available:</b>	\$967,673.89	<b>Funds Paid(%) :</b> 33%
<b>Change Order</b>	2	<b>Original Time Used:</b>	37%	<b>Revised Time Used:</b> 37%

Change Order No. 2 approves a supplemental agreement and an additional appropriation in the amount of \$24,764.46.

Engineering: This change provides payment for the clearing and grubbing pay item required to clear the area needed for adding 4-foot shoulders to the bridge and approaches due to this work being inadvertently omitted from the plans. This change extends the contract time five days to complete this additional work.

<b>NEW ITEM</b>	<b>\$24,764.46</b>
Clearing and Grubbing	1.00 LS      \$24,764.46 /LS      \$24,764.46

CHANGE ORDER ACTIONS						
CHANGE ORDER NO.	(+ Overrun (-) Underrun Amount (\$)	%	Appropriated Amount (\$)	%	Supplemental Agreement Amount(\$)	%
1	\$0.00	0.00%	\$0.00	0.00%	\$0.00	0.00%
2	\$24,764.46	2.63%	\$24,764.46	2.63%	\$24,764.46	2.63%
<b>TOTAL</b>	<b>\$24,764.46</b>	<b>2.63%</b>	<b>\$24,764.46</b>	<b>2.63%</b>	<b>\$24,764.46</b>	<b>2.63%</b>



## Change Orders with Cumulative Total of \$75,000 or Less (Information Only)

**January 09, 2023 Commission Meeting**

<b>Project Number:</b>	NHPPI-3500-(133)PM	<b>CO APPROVAL:</b>	Dec. 05, 2022	<b>AGENDA ITEM</b>	
<b>Contractor :</b>	SILVER STAR CONSTRUCTION COMPANY, INC.	<b>Contract ID:</b>	220168	<b>6F</b>	
		<b>Job Piece No.:</b>	35644(04)		
		<b>Highway No.:</b>	I-35		
<b>Designer:</b>	OKLA. DEPT. OF TRANSPORTATION	<b>Div. / County.:</b>	03 / MCCLAIN		
<b>Description:</b>	RESURFACE (ASPHALT) I-35: FROM 3.9 MILES SOUTHEAST OF THE SH-9 INTERCHANGE, EXTEND NORTHWEST IN GOLDSBY. PROJECT LENGTH = 4.320 MILES				
<b>Contract Amount:</b>	\$2,663,879.19	<b>Funds Available:</b>	\$2,719,838.82	<b>Funds Paid(%) :</b>	95%
<b>Change Order</b>	4	<b>Original Time Used:</b>	120%	<b>Revised Time Used:</b>	100%

Change Order No. 4 approves an additional appropriation in the amount of \$36,709.63.

Site Requirement: This change provides payment for the pavement smoothness incentive earned by the contractor for exceptionally smooth asphalt pavement as defined in the contract.

**NEW ITEM**

**\$36,709.63**

Pavement / Bridge Smoothness Adjustment	36,709.63 EA	\$1.00 /EA	\$36,709.63
---	--------------	------------	-------------

<b>CHANGE ORDER ACTIONS</b>						
CHANGE ORDER NO.	(+ Overrun - Underrun Amount (\$)	%	Appropriated Amount (\$)	%	Supplemental Agreement Amount(\$)	%
1	\$17,250.00	0.65%	\$17,250.00	0.65%	\$0.00	0.00%
2	\$2,000.00	0.08%	\$2,000.00	0.08%	\$0.00	0.00%
3	\$0.00	0.00%	\$0.00	0.00%	\$0.00	0.00%
4	\$36,709.63	1.38%	\$36,709.63	1.38%	\$0.00	0.00%
<b>TOTAL</b>	<b>\$55,959.63</b>	<b>2.10%</b>	<b>\$55,959.63</b>	<b>2.10%</b>	<b>\$0.00</b>	<b>0.00%</b>

## Change Orders with Cumulative Total of \$75,000 or Less (Information Only)

**January 09, 2023 Commission Meeting**

<b>Project Number:</b>	NHPP-251N(139)PM	<b>CO APPROVAL:</b>	Dec. 05, 2022	<b>AGENDA ITEM</b>
		<b>Contract ID:</b>	220259	<b>6G</b>
<b>Contractor :</b>	PARAGON CONTRACTORS, LLC	<b>Job Piece No.:</b>	35735(04)	
		<b>Highway No.:</b>	US-62B	
<b>Designer:</b>	OKLA. DEPT. OF TRANSPORTATION	<b>Div. / County.:</b>	01 / MUSKOGEE	
<b>Description:</b>	RESURFACE (ASPHALT) US-62B: FROM 0.8 MILES EAST OF THE US-64 J UNCTION, EXTEND SOUTHEAST IN MUSKOGEE. PROJECT LENGTH = 1.2 MILES			
<b>Contract Amount:</b>	\$685,243.09	<b>Funds Available:</b>	\$692,723.09	<b>Funds Paid(%) :</b> 92%
<b>Change Order</b>	1	<b>Original Time Used:</b>	12%	<b>Revised Time Used:</b> 12%

Change Order No. 1 approves a supplemental agreement and an additional appropriation in the amount of \$7,480.00.

Engineering: This change provides payment for the additional work required to replace the existing loop detector wires at the intersections of US-62B with 7th and 12th streets after milling operations due to this work being inadvertently omitted from the plans.

<b>NEW ITEM</b>	<b>\$7,480.00</b>
Loop Detector Wire	800.00 LF      \$9.35 /LF      \$7,480.00

<b>CHANGE ORDER ACTIONS</b>						
CHANGE ORDER NO.	(+ Overrun (-) Underrun Amount (\$)	%	Appropriated Amount (\$)	%	Supplemental Agreement Amount(\$)	%
1	\$7,480.00	1.09%	\$7,480.00	1.09%	\$7,480.00	1.09%
<b>TOTAL</b>	<b>\$7,480.00</b>	<b>1.09%</b>	<b>\$7,480.00</b>	<b>1.09%</b>	<b>\$7,480.00</b>	<b>1.09%</b>

## Change Orders with Cumulative Total of \$75,000 or Less (Information Only)

### January 09, 2023 Commission Meeting

<b>Project Number:</b>	NHPP-257N(073)PM	<b>CO APPROVAL:</b>	Dec. 07, 2022	<b>AGENDA ITEM</b>
		<b>Contract ID:</b>	210284	<b>6H</b>
<b>Contractor :</b>	SHERWOOD CONSTRUCTION CO., INC.	<b>Job Piece No.:</b>	27168(04)	
		<b>Highway No.:</b>	SH-20	
<b>Designer:</b>	POE & ASSOCIATES, INC.	<b>Div. / County.:</b>	08 / OSAGE	
<b>Description:</b>	INTERSECTION MODIFICATION SH-20: AT THE INTERSECTION OF JAYVINE HILL ROAD, 3.2 MILES WEST OF THE SH-11 JUNCTION NEAR SKIATOOK. PROJECT LENGTH = 0.750 MILE			
<b>Contract Amount:</b>	\$5,291,494.97	<b>Funds Available:</b>	\$5,316,518.02	<b>Funds Paid(%) :</b> 28%
<b>Change Order</b>	4	<b>Original Time Used:</b>	32%	<b>Revised Time Used:</b> 32%

Change Order No. 4 approves a supplemental agreement resulting in an underrun to the contract in the amount of \$14,632.24.

Scope: This change provides for the utilization of asphalt millings to complete the shouldering operations throughout this project in lieu of the traffic bound surface course material specified in the contract due to a request made by the contractor and approved by the Department which will result in a cost savings to the contract. The method of measurement for the millings pay item will be based on plan quantity.

**NEW ITEM**

			<b>\$116,679.50</b>
Traffic Bound Surface Course Type E (Asphalt Millings)	6,307.00 TON	\$18.50 /TON	\$116,679.50

**UNDERRUN ITEM**

			<b>-\$131,311.74</b>
Traffic Bound Surface Course Type E	-6,307.00 TON	\$20.82 /TON	-\$131,311.74

CHANGE ORDER ACTIONS						
CHANGE ORDER NO.	(+) Overrun (-) Underrun Amount (\$)	%	Appropriated Amount (\$)	%	Supplemental Agreement Amount(\$)	%
1	\$0.00	0.00%	\$0.00	0.00%	\$0.00	0.00%
2	\$25,023.05	0.47%	\$25,023.05	0.47%	\$0.00	0.00%
3	\$0.00	0.00%	\$0.00	0.00%	\$0.00	0.00%
4	-\$14,632.24	-0.28%	\$0.00	0.00%	\$0.00	0.00%
<b>TOTAL</b>	<b>\$10,390.81</b>	<b>0.20%</b>	<b>\$25,023.05</b>	<b>0.47%</b>	<b>\$0.00</b>	<b>0.00%</b>

## Change Orders with Cumulative Total of \$75,000 or Less (Information Only)

### January 09, 2023 Commission Meeting

<b>Project Number:</b>	STP-259B(064)PM	<b>CO APPROVAL:</b>	Nov. 30, 2022	<b>AGENDA ITEM</b>
		<b>Contract ID:</b>	220139	<b>6I</b>
<b>Contractor :</b>	TRI STAR CONSTRUCTION ARKANSAS, LLC	<b>Job Piece No.:</b>	29690(04)	
		<b>Highway No.:</b>	SH-99	
<b>Designer:</b>	OKLA. DEPT. OF TRANSPORTATION	<b>Div. / County.:</b>	08 / PAWNEE	
<b>Description:</b>	BRIDGE AND APPROACHES SH-99: OVER CARPENTER CREEK , 2.2 MILES NORTH OF THE US-412 (CIMARRON TURNPIKE) NEAR HALLETT. PROJECT LENGTH = 0.060 MILE			
<b>Contract Amount:</b>	\$1,200,000.00	<b>Funds Available:</b>	\$1,262,664.12	<b>Funds Paid(%) :</b> 96%
<b>Change Order</b>	3	<b>Original Time Used:</b>	83%	<b>Revised Time Used:</b> 83%

Change Order No. 3 approves an additional appropriation in the amount of \$28,793.64.

Site Requirement: This change provides payment for the overrun of the unclassified borrow pay item due to unsuitable material needing to be removed from the channel to accommodate construction of the detour, and due to the existing pavement removal being much thicker than estimated.

**OVERRUN ITEM**

**\$28,793.64**

Unclassified Borrow	2,399.47 CY	\$12.00 /CY	\$28,793.64
---------------------	-------------	-------------	-------------

CHANGE ORDER ACTIONS						
CHANGE ORDER NO.	(+ Overrun - Underrun Amount (\$)	%	Appropriated Amount (\$)	%	Supplemental Agreement Amount(\$)	%
1	\$32,700.00	2.73%	\$32,700.00	2.73%	\$0.00	0.00%
2	\$1,170.48	0.10%	\$1,170.48	0.10%	\$1,170.48	0.10%
3	\$28,793.64	2.40%	\$28,793.64	2.40%	\$0.00	0.00%
<b>TOTAL</b>	<b>\$62,664.12</b>	<b>5.22%</b>	<b>\$62,664.12</b>	<b>5.22%</b>	<b>\$1,170.48</b>	<b>0.10%</b>

## Change Orders with Cumulative Total of \$75,000 or Less (Information Only)

**January 09, 2023 Commission Meeting**

<b>Project Number:</b>	STP-CRRS(020)PM	<b>CO APPROVAL:</b>	Nov. 18, 2022	<b>AGENDA ITEM</b>
		<b>Contract ID:</b>	210188	<b>6J</b>
<b>Contractor :</b>	OVERLAND CORPORATION	<b>Job Piece No.:</b>	33339(04)	
		<b>Highway No.:</b>	SH-99	
<b>Designer:</b>	OKLA. DEPT. OF TRANSPORTATION	<b>Div. / County.:</b>	03 / PONTOTOC	
<b>Description:</b>	RESURFACE (ASPHALT) SH-99: FROM THE JOHNSTON COUNTY LINE, EXTEND NORTH NEAR FITTSTOWN. PROJECT LENGTH = 7.160 MILES			
<b>Contract Amount:</b>	\$1,160,326.66	<b>Funds Available:</b>	\$1,198,094.26	<b>Funds Paid(%) :</b> 100%
<b>Change Order</b>	2	<b>Original Time Used:</b>	59%	<b>Revised Time Used:</b> 59%

Change Order No. 2 approves an additional appropriation in the amount of \$5,629.65.

Site Requirement: This change provides payment for the final estimate due to the overrun of the asphalt surfacing pay item required to re-establish the proper cross slopes due to inconsistencies with the existing pavement.

The cost of this change is partially offset by the underrun of other items of work.

**OVERRUN ITEM**

**\$11,476.17**

Superpave, Type S5 (PG 64-22 OK) 131.91 TON \$87.00 /TON \$11,476.17

<b>CHANGE ORDER ACTIONS</b>						
CHANGE ORDER NO.	(+ Overrun (-) Underrun Amount (\$))	%	Appropriated Amount (\$)	%	Supplemental Agreement Amount(\$)	%
1	\$29,743.39	2.56%	\$29,743.39	2.56%	\$0.00	0.00%
2	\$5,629.65	0.49%	\$5,629.65	0.49%	\$0.00	0.00%
3	\$0.00	0.00%	\$0.00	0.00%	\$0.00	0.00%
4	\$2,394.56	0.21%	\$2,394.56	0.21%	\$0.00	0.00%
<b>TOTAL</b>	<b>\$37,767.60</b>	<b>3.25%</b>	<b>\$37,767.60</b>	<b>3.25%</b>	<b>\$0.00</b>	<b>0.00%</b>

## Change Orders with Cumulative Total of \$75,000 or Less (Information Only)

**January 09, 2023 Commission Meeting**

<b>Project Number:</b>	STP-CRRS(020)PM	<b>CO APPROVAL:</b>	Nov. 23, 2022	<b>AGENDA ITEM</b>
		<b>Contract ID:</b>	210188	<b>6K</b>
<b>Contractor :</b>	OVERLAND CORPORATION	<b>Job Piece No.:</b>	33339(04)	
		<b>Highway No.:</b>	SH-99	
<b>Designer:</b>	OKLA. DEPT. OF TRANSPORTATION	<b>Div. / County.:</b>	03 / PONTOTOC	
<b>Description:</b>	RESURFACE (ASPHALT) SH-99: FROM THE JOHNSTON COUNTY LINE, EXTEND NORTH NEAR FITTSTOWN. PROJECT LENGTH = 7.160 MILES			
<b>Contract Amount:</b>	\$1,160,326.66	<b>Funds Available:</b>	\$1,198,094.26	<b>Funds Paid(%) :</b> 100%
<b>Change Order</b>	4	<b>Original Time Used:</b>	59%	<b>Revised Time Used:</b> 59%

Change Order No. 4 approves an additional appropriation in the amount of \$2,394.56.

Site Requirement: This change provides payment for the additional expense incurred by the contractor due to the increase of the asphalt binder price index as provided for in the contract.

**NEW ITEM**

**\$2,394.56**

Asphalt Binder Price Adjustment	1.00 LS	\$2,394.56 /LS	\$2,394.56
---------------------------------	---------	----------------	------------

<b>CHANGE ORDER ACTIONS</b>						
CHANGE ORDER NO.	(+ Overrun (-) Underrun Amount (\$)	%	Appropriated Amount (\$)	%	Supplemental Agreement Amount(\$)	%
1	\$29,743.39	2.56%	\$29,743.39	2.56%	\$0.00	0.00%
2	\$5,629.65	0.49%	\$5,629.65	0.49%	\$0.00	0.00%
3	\$0.00	0.00%	\$0.00	0.00%	\$0.00	0.00%
4	\$2,394.56	0.21%	\$2,394.56	0.21%	\$0.00	0.00%
<b>TOTAL</b>	<b>\$37,767.60</b>	<b>3.25%</b>	<b>\$37,767.60</b>	<b>3.25%</b>	<b>\$0.00</b>	<b>0.00%</b>

## Change Orders with Cumulative Total of \$75,000 or Less (Information Only)

**January 09, 2023 Commission Meeting**

<b>Project Number:</b>	SSP-269N(097)PM	<b>CO APPROVAL:</b>	Dec. 07, 2022	<b>AGENDA ITEM</b>
		<b>Contract ID:</b>	220152	<b>6L</b>
<b>Contractor :</b>	T & G CONSTRUCTION, INC.	<b>Job Piece No.:</b>	34250(07)	
		<b>Highway No.:</b>	DUNCAN BYPASS	
<b>Designer:</b>	OKLA. DEPT. OF TRANSPORTATION	<b>Div. / County.:</b>	07 / STEPHENS	
<b>Description:</b>	RESURFACE (ASPHALT) DUNCAN BYPASS: FROM 0.50 MILES NORTH OF ELK AVENUE, EXTEND NORTH IN DUNCAN. PROJECT LENGTH = 4.920 MILES			
<b>Contract Amount:</b>	\$1,850,680.65	<b>Funds Available:</b>	\$1,925,083.70	<b>Funds Paid(%) :</b> 100%
<b>Change Order</b>	3	<b>Original Time Used:</b>	95%	<b>Revised Time Used:</b> 95%

Change Order No. 3 approves an additional appropriation in the amount of \$7,500.00.

Site Requirement: This change provides payment for the additional expense incurred by the contractor due to the increase of the asphalt binder price index as provided for in the contract.

**NEW ITEM**

**\$7,500.00**

Asphalt Binder Price Adjustment	1.00 LS	\$7,500.00 /LS	\$7,500.00
---------------------------------	---------	----------------	------------

<b>CHANGE ORDER ACTIONS</b>						
CHANGE ORDER NO.	(+ Overrun (-) Underrun Amount (\$)	%	Appropriated Amount (\$)	%	Supplemental Agreement Amount(\$)	%
2	\$66,903.05	3.62%	\$66,903.05	3.62%	\$0.00	0.00%
3	\$7,500.00	0.41%	\$7,500.00	0.41%	\$0.00	0.00%
<b>TOTAL</b>	<b>\$74,403.05</b>	<b>4.02%</b>	<b>\$74,403.05</b>	<b>4.02%</b>	<b>\$0.00</b>	<b>0.00%</b>

## Change Orders with Cumulative Total of \$75,000 or Less (Information Only)

**January 09, 2023 Commission Meeting**

<b>Project Number:</b>	SBR-014N(117)SB / SAP-014N(121)ES	<b>CO APPROVAL:</b>	Dec. 06, 2022	<b>AGENDA ITEM</b>	
<b>Contractor :</b>	MANHATTAN ROAD & BRIDGE COMPANY	<b>Contract ID:</b>	220072	<b>6M</b>	
		<b>Job Piece No.:</b>	33802(04)		
		<b>Highway No.:</b>	US-75		
<b>Designer:</b>	AGUIRRE & FIELDS, L.P.	<b>Div. / County.:</b>	08 / TULSA		
<b>Description:</b>	BRIDGE REHABILITATION AND BRIDGE REPAIR US-75: OVER 41ST STREET, 1.1 MILES NORTH OF THE I-44 INTERCHANGE IN TULSA. PROJECT LENGTH = 0.069 MILE				
<b>Contract Amount:</b>	\$2,564,718.00	<b>Funds Available:</b>	\$2,616,085.05	<b>Funds Paid(%) :</b>	86%
<b>Change Order</b>	2	<b>Original Time Used:</b>	82%	<b>Revised Time Used:</b>	82%

Change Order No. 2 approves a supplemental agreement resulting in an underrun to the contract in the amount of \$16,550.29.

**Site Requirement:** This change reclassifies the structural steel pay items on Bridge A and Bridge B required to repair existing diaphragms that were not included in the plans in lieu of placing shear connectors on the existing girders due to discovering during construction that they were already in place.

<b>NEW ITEMS</b>			<b>\$9,093.71</b>
Structural Steel (Bridge A) (Reclassified)	787.95 LB	\$5.08 /LB	\$4,002.79
Structural Steel (Bridge B) (Reclassified)	1,002.15 LB	\$5.08 /LB	\$5,090.92
<b>UNDERRUN ITEMS</b>			<b>-\$25,644.00</b>
Structural Steel (Bridge A)	-4,274.00 LB	\$3.00 /LB	-\$12,822.00
Structural Steel (Bridge B)	-4,274.00 LB	\$3.00 /LB	-\$12,822.00

<b>CHANGE ORDER ACTIONS</b>						
CHANGE ORDER NO.	(+ Overrun (-) Underrun Amount (\$)	%	Appropriated Amount (\$)	%	Supplemental Agreement Amount(\$)	%
1	\$51,367.05	2.00%	\$51,367.05	2.00%	\$51,367.05	2.00%
2	-\$16,550.29	-0.65%	\$0.00	0.00%	\$0.00	0.00%
<b>TOTAL</b>	<b>\$34,816.76</b>	<b>1.36%</b>	<b>\$51,367.05</b>	<b>2.00%</b>	<b>\$51,367.05</b>	<b>2.00%</b>



## Change Orders with Cumulative Total Greater than \$75,000

### JANUARY 09, 2023 Commission Meeting

ITEM	COUNTY	PROJECT NUMBER	FED OVER	CONTRACT	JPN	CHANGE ORDER	UNDER/ OVER RUN
7A	BECKHAM	NHPPI-4000-(098)PM	<input type="checkbox"/>	210007	3100104	008	-\$290,167.71
7B	BRYAN	BSAP-207N(012)FM / BSAP-207C(102)FM / SSP-013N(182)PM	<input type="checkbox"/>	200340	2590917	009	\$50,220.42
7C	CANADIAN	SBR-4000(146)SB	<input type="checkbox"/>	220182	3342004	002	\$149,860.58
7D	COMANCHE	SBR-4400(080)SB	<input type="checkbox"/>	210248	3389004	003	\$81,239.22
7E	COMANCHE	SBR-4400(080)SB	<input type="checkbox"/>	210248	3389004	005	\$42,299.64
7F	DEWEY	STP-222B(039)PM	<input type="checkbox"/>	210171	3033304	003	\$6,410.10
7G	GRADY	SSR-226C(099)SR	<input type="checkbox"/>	220022	3441604	002	\$19,677.44
7H	GRADY	SSR-226C(099)SR	<input type="checkbox"/>	220022	3441604	004	\$515.13
7I	KAY	NHPPI-3500-(101)PM	<input type="checkbox"/>	210097	2984504	005	\$1,680.80
7J	LINCOLN	MC-241B(087)MD	<input type="checkbox"/>	220097	3594704	002	\$12,607.91
7K	MCINTOSH	NHPPI-4000-(066)PM	<input type="checkbox"/>	190016	2795804	003	\$790,612.62
7L	MURRAY	CIRB-250D(032)RB	<input type="checkbox"/>	210143	2785504	003	\$272,309.32
7M	OKLAHOMA	STP-255D(506)CO	<input type="checkbox"/>	200287	3288404	005	\$11,377.71
7N	OKLAHOMA	SBR-4000(124)SB	<input type="checkbox"/>	210215	3423304	007	\$2,500.00
7O	OKLAHOMA	SBR-4000(124)SB	<input type="checkbox"/>	210215	3423304	008	\$14,026.10
7P	OSAGE	STP-257B(090)PM	<input type="checkbox"/>	220138	2968604	003	\$40,990.05
7Q	PAYNE	STP-260B(056)PM	<input type="checkbox"/>	210085	2986004	002	\$114,727.58
7R	ROGERS	STP-266B(081)PM	<input type="checkbox"/>	200355	2703104	007	\$1,327,098.09
7S	ROGERS	STP-266N(094)PM	<input type="checkbox"/>	210067	3422204	006	\$399,147.57
7T	TEXAS	STP-270C(041)PM	<input type="checkbox"/>	210258	2424107	004	\$4,500.00
7U	TULSA	NHPP-030N(080)3P	<input type="checkbox"/>	220153	3378304	001	\$500,815.28
7V	TULSA	NHPPI-4400(054)PM / NHPPI-4400(077)PM	<input type="checkbox"/>	200270	3378804	013	\$137,139.90

## Change Orders with Cumulative Total Greater than \$75,000

**January 09, 2023 Commission Meeting**

<b>Project Number:</b>	NHPPI-4000-(098)PM				<b>AGENDA ITEM</b>
			<b>Contract ID:</b>	210007	<b>7A</b>
<b>Contractor :</b>	C3 CONSTRUCTION, INC.		<b>Job Piece No.:</b>	31001(04)	
			<b>Highway No.:</b>	I-40	
<b>Designer:</b>	EST		<b>Div. / County.:</b>	05 / BECKHAM	
<b>Description:</b>	BRIDGE REHABILITATION I-40: OVER NORTH FORK OF RED RIVER, 0.5 MILES SOUTH OF THE SH-152 INTERCHANGE IN SAYRE. PROJECT LENGTH = 0.247 MILE				
<b>Contract Amount:</b>	\$7,458,047.57	<b>Funds Available:</b>	\$7,550,411.47	<b>Funds Paid(%) :</b>	91%
<b>Change Order</b>	8	<b>Original Time Used:</b>	106%	<b>Revised Time Used:</b>	91%

Request approval of Change Order No. 8 for a supplemental agreement resulting in an underrun to the contract in the amount of \$290,167.71.

Site Requirement: This change documents the underrun of the bridge deck repair pay items due to the bridge deck not deteriorating as much as expected between the design phase and construction. This change provides for the unrecoverable expenses and lost overhead incurred by the contractor due to the significant underrun of these major pay items.

<b>NEW ITEMS</b>		<b>\$32,244.13</b>
Class B Bridge Deck Repair (Lost Overhead)	760.28 SY	\$19.20 /SY
Class C Bridge Deck Repair (Lost Overhead)	546.17 SY	\$32.31 /SY
<b>UNDERRUN ITEMS</b>		<b>-\$322,411.84</b>
Class B Bridge Deck Repair	-760.28 SY	\$191.99 /SY
Class C Bridge Deck Repair	-546.17 SY	\$323.06 /SY

CHANGE ORDER ACTIONS						
CHANGE ORDER NO.	(+ Overrun (-) Underrun Amount (\$)	%	Appropriated Amount (\$)	%	Supplemental Agreement Amount(\$)	%
1	\$40,989.81	0.55%	\$40,989.81	0.55%	\$40,989.81	0.55%
2	\$29,328.15	0.39%	\$29,328.15	0.39%	\$29,328.15	0.39%
3	-\$683,581.59	-9.17%	\$0.00	0.00%	\$0.00	0.00%
4	\$9,488.28	0.13%	\$9,488.28	0.13%	\$9,488.28	0.13%
5	\$11,474.16	0.15%	\$11,474.16	0.15%	\$11,474.16	0.15%
6	\$0.00	0.00%	\$0.00	0.00%	\$0.00	0.00%
7	\$1,083.50	0.01%	\$1,083.50	0.01%	\$1,083.50	0.01%
8	-\$290,167.71	-3.89%	\$0.00	0.00%	\$0.00	0.00%
<b>TOTAL</b>	<b>-\$881,385.40</b>	<b>-11.82%</b>	<b>\$92,363.90</b>	<b>1.24%</b>	<b>\$92,363.90</b>	<b>1.24%</b>

## Change Orders with Cumulative Total Greater than \$75,000

**January 09, 2023 Commission Meeting**

<b>Project Number:</b>	BSAP-207N(012)FM / BSAP-207C(102)FM / SSP-013N(182)PM		<b>Contract ID:</b>	200340	<b>AGENDA ITEM</b>
<b>Contractor :</b>	OVERLAND CORPORATION		<b>Job Piece No.:</b>	25909(17)	<b>7B</b>
<b>Designer:</b>	CEC		<b>Highway No.:</b>	US-69 POE	
<b>Description:</b>	PORT OF ENTRY, GRADE, DRAIN, SURFACE AND RESURFACE US-69: FROM 0.2 MILES SOUTH OF THE SH-91 INTERCHANGE, EXTEND NORTH IN COLBERT. PROJECT LENGTH = 2.496 MILES				
<b>Contract Amount:</b>	\$17,981,741.76	<b>Funds Available:</b>	\$18,338,821.08	<b>Funds Paid(%) :</b>	70%
<b>Change Order</b>	9	<b>Original Time Used:</b>	115%	<b>Revised Time Used:</b>	101%

Request approval of Change Order No. 9 for a supplemental agreement and an additional appropriation in the amount of \$50,220.42.

Scope: This change provides payment for the additional work required to remove and backfill the existing southbound scale house and pit due to a request made by the Department. This change extends the contract time four days to complete this additional work.

**NEW ITEMS**

**\$50,220.42**

Removal of Existing Structures (SB Scale House & Pit)	1.00 EA	\$45,946.97 /EA	\$45,946.97
Mobilization (Additional)	1.00 LS	\$4,273.45 /LS	\$4,273.45

CHANGE ORDER ACTIONS						
CHANGE ORDER NO.	(+ Overrun (-) Underrun Amount (\$))	%	Appropriated Amount (\$)	%	Supplemental Agreement Amount(\$)	%
1	\$12,784.07	0.07%	\$12,784.07	0.07%	\$12,784.07	0.07%
2	-\$66,218.40	-0.37%	\$0.00	0.00%	\$0.00	0.00%
3	\$5,461.33	0.03%	\$5,461.33	0.03%	\$5,461.33	0.03%
4	\$153,035.66	0.85%	\$153,035.66	0.85%	\$153,035.66	0.85%
5	\$41,273.89	0.23%	\$41,273.89	0.23%	\$41,273.89	0.23%
6	-\$23,474.48	-0.13%	\$0.00	0.00%	\$0.00	0.00%
7	\$144,524.37	0.80%	\$144,524.37	0.80%	\$0.00	0.00%
8	\$0.00	0.00%	\$0.00	0.00%	\$0.00	0.00%
9	\$50,220.42	0.28%	\$50,220.42	0.28%	\$50,220.42	0.28%
<b>TOTAL</b>	<b>\$317,606.86</b>	<b>1.77%</b>	<b>\$407,299.74</b>	<b>2.27%</b>	<b>\$262,775.37</b>	<b>1.46%</b>

## Change Orders with Cumulative Total Greater than \$75,000

**January 09, 2023 Commission Meeting**

<b>Project Number:</b>	SBR-4000(146)SB				<b>AGENDA ITEM</b>
<b>Contractor :</b>	WILDCAT CONSTRUCTION CO., INC. & SUBSIDIARIES		<b>Contract ID:</b>	220182	<b>7C</b>
			<b>Job Piece No.:</b>	33420(04)	
			<b>Highway No.:</b>	I-40	
<b>Designer:</b>	RHOMBIC		<b>Div. / County.:</b>	04 / CANADIAN	
<b>Description:</b>	BRIDGE REHABILITATION I-40: OVER CHAPEL ROAD (S. MAPLE ROAD), 3.0 MILES WEST OF US-270 NEAR EL RENO. PROJECT LENGTH = 0.075 MILE				
<b>Contract Amount:</b>	\$1,238,991.90	<b>Funds Available:</b>	\$1,366,436.13	<b>Funds Paid(%) :</b>	40%
<b>Change Order</b>	2	<b>Original Time Used:</b>	53%	<b>Revised Time Used:</b>	53%

Request approval of Change Order No. 2 for a supplemental agreement and an additional appropriation in the amount of \$149,860.58.

Site Requirement: This change provides payment for the additional work required to replace the parapets on the I-40 bridges over Coleman Chapel Hill Road due to discovering significant deterioration of the existing parapets during construction. This change extends the contract time thirty-five days to complete this additional work.

<b>NEW ITEMS</b>			<b>\$149,860.58</b>
Removal of Existing Parapet (Bridge A)	185.00 LF	\$144.98 /LF	\$26,821.30
Removal of Existing Parapet (Bridge B)	182.00 LF	\$144.98 /LF	\$26,386.36
Concrete Parapet (Bridge A)	182.00 LF	\$265.53 /LF	\$48,326.46
Concrete Parapet (Bridge B)	182.00 LF	\$265.53 /LF	\$48,326.46

<b>CHANGE ORDER ACTIONS</b>						
CHANGE ORDER NO.	(+) Overrun (-) Underrun Amount (\$)	%	Appropriated Amount (\$)	%	Supplemental Agreement Amount(\$)	%
1	\$127,444.23	10.29%	\$127,444.23	10.29%	\$0.00	0.00%
2	\$149,860.58	12.10%	\$149,860.58	12.10%	\$149,860.58	12.10%
<b>TOTAL</b>	<b>\$277,304.81</b>	<b>22.38%</b>	<b>\$277,304.81</b>	<b>22.38%</b>	<b>\$149,860.58</b>	<b>12.10%</b>

## Change Orders with Cumulative Total Greater than \$75,000

**January 09, 2023 Commission Meeting**

<b>Project Number:</b>	SBR-4400(080)SB	<b>Contract ID:</b>	210248	<b>AGENDA ITEM</b>
<b>Contractor :</b>	FRONTIER BRIDGE, INC.	<b>Job Piece No.:</b>	33890(04)	<b>7D</b>
		<b>Highway No.:</b>	I-44	
<b>Designer:</b>	EST	<b>Div. / County.:</b>	07 / COMANCHE	
<b>Description:</b>	BRIDGE REHABILITATION I-44: OVER SH-49, 0.8 MILES SOUTH OF US-62 NEAR LAWTON. PROJECT LENGTH = 0.024 MILE			
<b>Contract Amount:</b>	\$4,333,406.88	<b>Funds Available:</b>	\$4,514,905.99	<b>Funds Paid(%) :</b> 88%
<b>Change Order</b>	3	<b>Original Time Used:</b>	98%	<b>Revised Time Used:</b> 98%

Request approval of Change Order No. 3 for an additional appropriation in the amount of \$81,239.22.

Site Requirement: This change provides payment for the overrun of several pay items due to various unforeseen site conditions experienced by the contractor during construction. This change provides payment for the additional expense incurred by the contractor due to the increase of the asphalt binder price index as provided for in the contract.

<b>NEW ITEM</b>	<b>\$16,099.63</b>
Asphalt Binder Price Adjustment	1.00 LS      \$16,099.63 /LS      \$16,099.63
<b>OVERRUN ITEMS</b>	<b>\$65,139.60</b>
CLSM Backfill (Bridge A)	15.00 CY      \$278.96 /CY      \$4,184.40
Removal of Guardrail	40.00 LF      \$6.92 /LF      \$276.80
Superpave, Type S4 (PG 76-28 OK)	323.84 TON      \$150.82 /TON      \$48,841.55
CLSM Backfill (Bridge B)	7.12 CY      \$278.96 /CY      \$1,986.20
Traffic Stripe (Multi-Poly.) (6" Wide)	1,949.00 LF      \$1.23 /LF      \$2,397.27
Relocation of Port. Longitudinal Barrier	2,946.00 LF      \$2.53 /LF      \$7,453.38

<b>CHANGE ORDER ACTIONS</b>						
CHANGE ORDER NO.	(+ Overrun - Underrun Amount (\$)	%	Appropriated Amount (\$)	%	Supplemental Agreement Amount(\$)	%
1	\$30,714.11	0.71%	\$30,714.11	0.71%	\$0.00	0.00%
2	\$150,000.00	3.46%	\$150,000.00	3.46%	\$0.00	0.00%
3	\$81,239.22	1.87%	\$81,239.22	1.87%	\$0.00	0.00%
4	\$785.00	0.02%	\$785.00	0.02%	\$0.00	0.00%
5	\$42,299.64	0.98%	\$42,299.64	0.98%	\$42,299.64	0.98%
<b>TOTAL</b>	<b>\$305,037.97</b>	<b>7.04%</b>	<b>\$305,037.97</b>	<b>7.04%</b>	<b>\$42,299.64</b>	<b>0.98%</b>

## Change Orders with Cumulative Total Greater than \$75,000

**January 09, 2023 Commission Meeting**

<b>Project Number:</b>	SBR-4400(080)SB				<b>AGENDA ITEM</b>
			<b>Contract ID:</b>	210248	7E
<b>Contractor :</b>	FRONTIER BRIDGE, INC.		<b>Job Piece No.:</b>	33890(04)	
			<b>Highway No.:</b>	I-44	
<b>Designer:</b>	EST		<b>Div. / County.:</b>	07 / COMANCHE	
<b>Description:</b>	BRIDGE REHABILITATION I-44: OVER SH-49, 0.8 MILES SOUTH OF US-62 NEAR LAWTON. PROJECT LENGTH = 0.024 MILE				
<b>Contract Amount:</b>	\$4,333,406.88	<b>Funds Available:</b>	\$4,514,905.99	<b>Funds Paid(%) :</b>	94%
<b>Change Order</b>	5	<b>Original Time Used:</b>	100%	<b>Revised Time Used:</b>	100%

Request approval of Change Order No. 5 for a supplemental agreement and an additional appropriation in the amount of \$42,299.64.

Site Requirement: This change provides payment for the additional work required to construct a parapet wall between the wing walls of Bridges A and B to prevent future erosion behind the wing walls and slope walls; and for the additional work required to construct concrete attenuator pads as specified due to this work being inadvertently omitted from the plans.

<b>NEW ITEMS</b>			<b>\$42,299.64</b>
Construction Miscellaneous (Attenuator Pads)	4.00 EA	\$3,817.39 /EA	\$15,269.56
Concrete Parapet	114.00 LF	\$237.11 /LF	\$27,030.08

CHANGE ORDER ACTIONS						
CHANGE ORDER NO.	(+ Overrun (-) Underrun Amount (\$)	%	Appropriated Amount (\$)	%	Supplemental Agreement Amount(\$)	%
1	\$30,714.11	0.71%	\$30,714.11	0.71%	\$0.00	0.00%
2	\$150,000.00	3.46%	\$150,000.00	3.46%	\$0.00	0.00%
3	\$81,239.22	1.87%	\$81,239.22	1.87%	\$0.00	0.00%
4	\$785.00	0.02%	\$785.00	0.02%	\$0.00	0.00%
5	\$42,299.64	0.98%	\$42,299.64	0.98%	\$42,299.64	0.98%
<b>TOTAL</b>	<b>\$305,037.97</b>	<b>7.04%</b>	<b>\$305,037.97</b>	<b>7.04%</b>	<b>\$42,299.64</b>	<b>0.98%</b>

## Change Orders with Cumulative Total Greater than \$75,000

**January 09, 2023 Commission Meeting**

<b>Project Number:</b>	STP-222B(039)PM				<b>AGENDA ITEM</b>
		<b>Contract ID:</b>	210171	<b>7F</b>	
<b>Contractor :</b>	FRONTIER BRIDGE, INC.		<b>Job Piece No.:</b>		
			<b>Highway No.:</b>	SH-34	
<b>Designer:</b>	ATKINS		<b>Div. / County.:</b>	05 / DEWEY	
<b>Description:</b>	BRIDGE AND APPROACHES SH-34: OVER CANADIAN RIVER, 10.5 MILES SOUTH OF THE US-60/SH-51 JUNCTION NEAR CAMARGO. PROJECT LENGTH = 1.344 MILES				
<b>Contract Amount:</b>	\$14,927,180.61	<b>Funds Available:</b>	\$15,226,767.63	<b>Funds Paid(%) :</b>	89%
<b>Change Order</b>	3	<b>Original Time Used:</b>	92%	<b>Revised Time Used:</b>	92%

Request approval of Change Order No. 3 for a supplemental agreement and an additional appropriation in the amount of \$6,410.10.

Site Requirement: This change provides payment for the utilization of multi-polymer traffic stripe to provide permanent delineation throughout this project in lieu of the thermoplastic traffic stripe specified in the plans due to plastic striping not being conducive for centerline rumble strip.

<b>NEW ITEM</b>	<b>\$17,307.27</b>
Traffic Stripe (Multi-Poly.) (4" Wide) <span style="float: right;">21,367.00 LF</span>	\$0.81 /LF <span style="float: right;">\$17,307.27</span>
<b>UNDERRUN ITEM</b>	<b>-\$10,897.17</b>
Traffic Stripe (Plastic) (4" Wide) <span style="float: right;">-21,367.00 LF</span>	\$0.51 /LF <span style="float: right;">-\$10,897.17</span>

CHANGE ORDER ACTIONS						
CHANGE ORDER NO.	(+ Overrun (-) Underrun Amount (\$)	%	Appropriated Amount (\$)	%	Supplemental Agreement Amount(\$)	%
1	\$67,121.41	0.45%	\$67,121.41	0.45%	\$0.00	0.00%
2	\$232,465.61	1.56%	\$232,465.61	1.56%	\$0.00	0.00%
3	\$6,410.10	0.04%	\$6,410.10	0.04%	\$6,410.10	0.04%
<b>TOTAL</b>	<b>\$305,997.12</b>	<b>2.05%</b>	<b>\$305,997.12</b>	<b>2.05%</b>	<b>\$6,410.10</b>	<b>0.04%</b>

## Change Orders with Cumulative Total Greater than \$75,000

### January 09, 2023 Commission Meeting

<b>Project Number:</b>	SSR-226C(099)SR				<b>AGENDA ITEM</b>
			<b>Contract ID:</b>	220022	<b>7G</b>
<b>Contractor :</b>	HASKELL LEMON CONSTRUCTION CO.		<b>Job Piece No.:</b>	34416(04)	
			<b>Highway No.:</b>	SH-37	
<b>Designer:</b>	OKLA. DEPT. OF TRANSPORTATION		<b>Div. / County.:</b>	07 / GRADY	
<b>Description:</b>	RESURFACE (ASPHALT) SH-37: FROM 0.01 MILES EAST OF GREGORY ROAD, EXTEND EAST IN TUTTLE. PROJECT LENGTH = 3.00 MILE				
<b>Contract Amount:</b>	\$1,499,797.20	<b>Funds Available:</b>	\$1,571,591.16	<b>Funds Paid(%):</b>	100%
<b>Change Order</b>	2	<b>Original Time Used:</b>	87%	<b>Revised Time Used:</b>	87%

Request approval of Change Order No. 2 for an additional appropriation in the amount of \$19,677.44.

Site Requirement: This change provides payment for the pavement smoothness incentive earned by the contractor for exceptionally smooth asphalt pavement as defined in the contract. This change incorporates Special Provision 430-2QA(a-j)19 for Pavement and Bridge Deck Smoothness into the contract as originally intended due to being inadvertently omitted from the contract for payment purposes while the previously included special provision 430-3QA(a-i)19 for Pavement and Bridge Deck Smoothness Using MRI is intended to be a comparative test, or pilot project, only.

**NEW ITEM**

**\$19,677.44**

Pavement / Bridge Smoothness Adjustment 1.00 LS \$19,677.44 /LS \$19,677.44

<b>CHANGE ORDER ACTIONS</b>						
CHANGE ORDER NO.	(+ Overrun (-) Underrun Amount (\$)	%	Appropriated Amount (\$)	%	Supplemental Agreement Amount(\$)	%
1	\$71,793.96	4.79%	\$71,793.96	4.79%	\$0.00	0.00%
2	\$19,677.44	1.31%	\$19,677.44	1.31%	\$0.00	0.00%
4	\$515.13	0.03%	\$515.13	0.03%	\$515.13	0.03%
<b>TOTAL</b>	<b>\$91,986.53</b>	<b>6.13%</b>	<b>\$91,986.53</b>	<b>6.13%</b>	<b>\$515.13</b>	<b>0.03%</b>



## Change Orders with Cumulative Total Greater than \$75,000

**January 09, 2023 Commission Meeting**

<b>Project Number:</b>	SSR-226C(099)SR	<b>Contract ID:</b>	220022	<b>AGENDA ITEM</b>
<b>Contractor :</b>	HASKELL LEMON CONSTRUCTION CO.	<b>Job Piece No.:</b>	34416(04)	<b>7H</b>
		<b>Highway No.:</b>	SH-37	
<b>Designer:</b>	OKLA. DEPT. OF TRANSPORTATION	<b>Div. / County.:</b>	07 / GRADY	
<b>Description:</b>	RESURFACE (ASPHALT) SH-37: FROM 0.01 MILES EAST OF GREGORY ROAD, EXTEND EAST IN TUTTLE. PROJECT LENGTH = 3.00 MILE			
<b>Contract Amount:</b>	\$1,499,797.20	<b>Funds Available:</b>	\$1,571,591.16	<b>Funds Paid(%) :</b> 100%
<b>Change Order</b>	4	<b>Original Time Used:</b>	87%	<b>Revised Time Used:</b> 87%

Request approval of Change Order No. 4 for a supplemental agreement and an additional appropriation in the amount of \$515.13.

Site Requirement: This change provides payment for the construction barricades pay item required to ensure the safety of the contractor personnel and traveling public during construction by closing adjacent city streets which will prevent crossing traffic in the work zone.

**NEW ITEM**

**\$515.13**

Construction Barricades (Type III)

231.00 SD

\$2.23 /SD

\$515.13

<b>CHANGE ORDER ACTIONS</b>						
CHANGE ORDER NO.	(+ Overrun (-) Underrun Amount (\$)	%	Appropriated Amount (\$)	%	Supplemental Agreement Amount(\$)	%
1	\$71,793.96	4.79%	\$71,793.96	4.79%	\$0.00	0.00%
2	\$19,677.44	1.31%	\$19,677.44	1.31%	\$0.00	0.00%
4	\$515.13	0.03%	\$515.13	0.03%	\$515.13	0.03%
<b>TOTAL</b>	<b>\$91,986.53</b>	<b>6.13%</b>	<b>\$91,986.53</b>	<b>6.13%</b>	<b>\$515.13</b>	<b>0.03%</b>

## Change Orders with Cumulative Total Greater than \$75,000

**January 09, 2023 Commission Meeting**

<b>Project Number:</b>	NHPPI-3500-(101)PM				<b>AGENDA ITEM</b>
			<b>Contract ID:</b>	210097	<b>7I</b>
<b>Contractor :</b>	WILDCAT CONSTRUCTION CO., INC. & SUBSIDIARIES		<b>Job Piece No.:</b>	29845(04)	
			<b>Highway No.:</b>	I-35	
<b>Designer:</b>	POE & ASSOC.		<b>Div. / County.:</b>	04 / KAY	
<b>Description:</b>	BRIDGE AND APPROACHES I-35: OVER THE BLACKWELL NORTHERN RAILROAD, 8.6 MILES NORTH OF SH-11 NEAR BRAMAN. PROJECT LENGTH = 1.066 MILES				
<b>Contract Amount:</b>	\$10,568,137.16	<b>Funds Available:</b>	\$11,510,677.26	<b>Funds Paid(%) :</b>	97%
<b>Change Order</b>	5	<b>Original Time Used:</b>	104%	<b>Revised Time Used:</b>	95%

Request approval of Change Order No. 5 for a supplemental agreement and an additional appropriation in the amount of \$1,680.80.

Engineering: This change provides payment for the guardrail delineators pay item required to complete the new guardrail installation as specified due to this item being inadvertently omitted from the plans; and for the sheet aluminum signs pay item required to install new bridge height clearance signs on the Braman Road bridge due to the overlay raising the grade about six inches and this pay item being inadvertently omitted from the plans.

**NEW ITEMS**

**\$1,680.80**

Sheet Aluminum Signs	28.00 SF	\$22.00 /SF	\$616.00
Guardrail Delineators (Type 1, Code 1)	44.00 EA	\$24.20 /EA	\$1,064.80

CHANGE ORDER ACTIONS						
CHANGE ORDER NO.	(+ Overrun (-) Underrun Amount (\$)	%	Appropriated Amount (\$)	%	Supplemental Agreement Amount(\$)	%
1	\$30,023.35	0.28%	\$30,023.35	0.28%	\$30,023.35	0.28%
2	\$899,971.74	8.52%	\$899,971.74	8.52%	\$129,779.74	1.23%
3	-\$24,083.50	-0.23%	\$0.00	0.00%	\$0.00	0.00%
4	\$12,545.01	0.12%	\$12,545.01	0.12%	\$12,545.01	0.12%
5	\$1,680.80	0.02%	\$1,680.80	0.02%	\$1,680.80	0.02%
<b>TOTAL</b>	<b>\$920,137.40</b>	<b>8.71%</b>	<b>\$944,220.90</b>	<b>8.93%</b>	<b>\$174,028.90</b>	<b>1.65%</b>

## Change Orders with Cumulative Total Greater than \$75,000

**January 09, 2023 Commission Meeting**

<b>Project Number:</b>	MC-241B(087)MD	<b>Contract ID:</b>	220097	<b>AGENDA ITEM</b>
<b>Contractor :</b>	HASKELL LEMON GROUP, LLC	<b>Job Piece No.:</b>	35947(04)	<b>7J</b>
		<b>Highway No.:</b>	US-177	
<b>Designer:</b>	OKLA. DEPT. OF TRANSPORTATION	<b>Div. / County.:</b>	03 / LINCOLN	
<b>Description:</b>	RESURFACE (ASPHALT) US-177: FROM 8.02 MILES NORTH OF SH-66 JUNCTION, EXTEND NORTH IN CARNEY. PROJECT LENGTH = 4.87 MILES			
<b>Contract Amount:</b>	\$740,445.45	<b>Funds Available:</b>	\$839,904.41	<b>Funds Paid(%) :</b> 88%
<b>Change Order</b>	2	<b>Original Time Used:</b>	75%	<b>Revised Time Used:</b> 75%

Request approval of Change Order No. 2 for an additional appropriation in the amount of \$12,607.91.

Site Requirement: This change provides payment for the pavement smoothness incentive earned by the contractor for exceptionally smooth asphalt pavement as defined in the contract.

**NEW ITEM**

**\$12,607.91**

Pavement / Bridge Smoothness Adjustment	12,607.91 EA	\$1.00 /EA	\$12,607.91
---	--------------	------------	-------------

CHANGE ORDER ACTIONS						
CHANGE ORDER NO.	(+) Overrun (-) Underrun Amount (\$)	%	Appropriated Amount (\$)	%	Supplemental Agreement Amount(\$)	%
1	\$99,458.96	13.43%	\$99,458.96	13.43%	\$4,861.06	0.66%
2	\$12,607.91	1.70%	\$12,607.91	1.70%	\$0.00	0.00%
<b>TOTAL</b>	<b>\$112,066.87</b>	<b>15.14%</b>	<b>\$112,066.87</b>	<b>15.14%</b>	<b>\$4,861.06</b>	<b>0.66%</b>

## Change Orders with Cumulative Total Greater than \$75,000

**January 09, 2023 Commission Meeting**

<b>Project Number:</b>	NHPPI-4000-(066)PM			<b>AGENDA ITEM</b>
		<b>Contract ID:</b>	190016	<b>7K</b>
<b>Contractor :</b>	OBC, INC.	<b>Job Piece No.:</b>	27958(04)	
		<b>Highway No.:</b>	I-40	
<b>Designer:</b>	HOLLOWAY, UPDIKE AND BELLEN, INC.	<b>Div. / County.:</b>	01 / MCINTOSH	
<b>Description:</b>	BRIDGE AND APPROACHES I-40: OVER US-69B AND UNION PACIFIC RAILROAD, 0.8 MILES AND 0.9 MILES EAST OF THE US-69 INTERCHANGE IN CHECOTAH. PROJECT LENGTH = 1.058 MILES			
<b>Contract Amount:</b>	\$15,723,795.76	<b>Funds Available:</b>	\$15,839,977.92	<b>Funds Paid(%) :</b> 100%
<b>Change Order</b>	3	<b>Original Time Used:</b>	129%	<b>Revised Time Used:</b> 129%

Request approval of Change Order No. 3 for a supplemental agreement and an additional appropriation in the amount of \$790,612.62.

Engineering: This change provides payment for the overrun of the unclassified excavation, cement treated base, and stabilized subgrade pay items required to construct a suitable roadway base as specified due to errors made when calculating the quantities in the plans. This change imposes a unit price reduction for that portion of the cement treated base and stabilized subgrade pay items in excess of 125% of the contract amount due to the significant overrun of these major items of work. This change documents the underrun of the police traffic surveillance pay item due to less monitoring being needed than estimated.

<b>NEW ITEMS</b>		<b>\$185,583.65</b>
Stabilized Subgrade (Reclassified)	5,701.42 SY	\$4.65 /SY \$26,511.60
Cement Treated Base (Reclassified)	13,201.00 SY	\$12.05 /SY \$159,072.05
<b>OVERRUN ITEMS</b>		<b>\$629,765.46</b>
Stabilized Subgrade	13,187.25 SY	\$5.00 /SY \$65,936.25
Unclassified Excavation	38,547.73 CY	\$11.80 /CY \$454,863.21
Cement Treated Base	8,382.00 SY	\$13.00 /SY \$108,966.00
<b>UNDERRUN OF PREVIOUSLY ESTABLISHED C/O ITEM</b>		<b>-\$24,736.50</b>
Traffic Surveillance, OHP (Non-Bid)	-358.50 HOUR	\$69.00 /HOUR -\$24,736.50

<b>CHANGE ORDER ACTIONS</b>						
CHANGE ORDER NO.	(+ Overrun (-) Underrun Amount (\$)	%	Appropriated Amount (\$)	%	Supplemental Agreement Amount(\$)	%
1	\$76,457.50	0.49%	\$76,457.50	0.49%	\$76,457.50	0.49%
2	\$31,050.00	0.20%	\$31,050.00	0.20%	\$0.00	0.00%
3	\$790,612.62	5.03%	\$790,612.62	5.03%	\$185,583.65	1.18%
4	\$8,674.66	0.06%	\$8,674.66	0.06%	\$2,877.34	0.02%
<b>TOTAL</b>	<b>\$906,794.78</b>	<b>5.77%</b>	<b>\$906,794.78</b>	<b>5.77%</b>	<b>\$264,918.49</b>	<b>1.68%</b>

## Change Orders with Cumulative Total Greater than \$75,000

**January 09, 2023 Commission Meeting**

<b>Project Number:</b>	CIRB-250D(032)RB	<b>Contract ID:</b>	210143	<b>AGENDA ITEM</b>
<b>Contractor :</b>	OVERLAND CORPORATION	<b>Job Piece No.:</b>	27855(04)	<b>7L</b>
		<b>Highway No.:</b>	COUNTY ROAD	
<b>Designer:</b>	CP&Y, INC.	<b>Div. / County.:</b>	07 / MURRAY	
<b>Description:</b>	GRADE, DRAIN, SURFACE, AND BRIDGE COUNTY ROAD (EW-168/BUEL GREEN ROAD): FROM THE US-177 JUNCTION, EXTEND WEST NEAR SULPHUR. PROJECT LENGTH = 5.982 MILES			
<b>Contract Amount:</b>	\$8,137,662.15	<b>Funds Available:</b>	\$8,184,984.38	<b>Funds Paid(%) :</b> 79%
<b>Change Order</b>	3	<b>Original Time Used:</b>	88%	<b>Revised Time Used:</b> 88%

Request approval of Change Order No. 3 for an additional appropriation in the amount of \$272,309.32.

Site Requirement: This change provides payment for the estimated additional expense to be incurred by the contractor due to the anticipated increase of the asphalt binder price index as provided for in the contract.

**NEW ITEMS**

**\$272,309.32**

Asphalt Binder Price Adjustment (Estimated)(S3 64-22)	1.00 LS	\$126,162.67 /LS	\$126,162.67
Asphalt Binder Price Adjustment (Estimated)(S4 64-22)	1.00 LS	\$146,146.65 /LS	\$146,146.65

### CHANGE ORDER ACTIONS

CHANGE ORDER NO.	(+ Overrun - Underrun Amount (\$)	%	Appropriated Amount (\$)	%	Supplemental Agreement Amount(\$)	%
1	\$5,460.00	0.07%	\$5,460.00	0.07%	\$0.00	0.00%
2	\$41,862.23	0.51%	\$41,862.23	0.51%	\$0.00	0.00%
3	\$272,309.32	3.35%	\$272,309.32	3.35%	\$0.00	0.00%
<b>TOTAL</b>	<b>\$319,631.55</b>	<b>3.93%</b>	<b>\$319,631.55</b>	<b>3.93%</b>	<b>\$0.00</b>	<b>0.00%</b>

## Change Orders with Cumulative Total Greater than \$75,000

**January 09, 2023 Commission Meeting**

<b>Project Number:</b>	STP-255D(506)CO			<b>AGENDA ITEM</b>
		<b>Contract ID:</b>	200287	<b>7M</b>
<b>Contractor :</b>	COWBOY CONTRACTING, INC. RAYGN D ALEXANDER	<b>Job Piece No.:</b>	32884(04)	
		<b>Highway No.:</b>	COUNTY ROAD	
<b>Designer:</b>	GUY ENGINEERING SERVICES, INC.	<b>Div. / County.:</b>	04 / OKLAHOMA	
<b>Description:</b>	BRIDGE AND APPROACHES COUNTY ROAD (EW-093/NORTH 192ND STREET): OVER BIDDY CREEK, 4.1 MILES WEST OF THE SH-74 JUNCTION NEAR OKLAHOMA CITY. PROJECT LENGTH = 0.140 MILE			
<b>Contract Amount:</b>	\$999,999.99	<b>Funds Available:</b>	\$1,111,114.04	<b>Funds Paid(%) :</b> 100%
<b>Change Order</b>	5	<b>Original Time Used:</b>	96%	<b>Revised Time Used:</b> 92%

Request approval of Change Order No. 5 for a supplemental agreement and an additional appropriation in the amount of \$11,377.71.

Site Requirement: This change provides payment for the final estimate due to the overrun of the asphalt surfacing pay item required to provide a smoother transition with the existing pavement; and due to the additional expense incurred by the contractor due to the increase of the asphalt binder price index as provided for in the contract.

The cost of this change is partially offset by the underrun of other items of work.

<b>NEW ITEM</b>			<b>\$5,226.84</b>
Asphalt Binder Price Adjustment	1.00 LS	\$5,226.84 /LS	\$5,226.84
<b>OVERRUN ITEM</b>			<b>\$10,807.00</b>
Superpave, Type S4 (PG 64-22 OK)	108.07 TON	\$100.00 /TON	\$10,807.00

CHANGE ORDER ACTIONS						
CHANGE ORDER NO.	(+) Overrun (-) Underrun Amount (\$)	%	Appropriated Amount (\$)	%	Supplemental Agreement Amount(\$)	%
1	\$0.00	0.00%	\$0.00	0.00%	\$0.00	0.00%
2	\$1,200.00	0.12%	\$1,200.00	0.12%	\$1,200.00	0.12%
3	\$10,000.00	1.00%	\$10,000.00	1.00%	\$10,000.00	1.00%
4	\$99,914.05	9.99%	\$99,914.05	9.99%	\$99,914.05	9.99%
5	\$11,377.71	1.14%	\$11,377.71	1.14%	\$1,524.00	0.15%
<b>TOTAL</b>	<b>\$122,491.76</b>	<b>12.25%</b>	<b>\$122,491.76</b>	<b>12.25%</b>	<b>\$112,638.05</b>	<b>11.26%</b>

## Change Orders with Cumulative Total Greater than \$75,000

**January 09, 2023 Commission Meeting**

<b>Project Number:</b>	SBR-4000(124)SB			<b>AGENDA ITEM</b>
		<b>Contract ID:</b>	210215	7N
<b>Contractor :</b>	K & R BUILDERS, INC.	<b>Job Piece No.:</b>	34233(04)	
		<b>Highway No.:</b>	CITY STREET	
<b>Designer:</b>	FREESE & NICOLES, INC.	<b>Div. / County.:</b>	04 / OKLAHOMA	
<b>Description:</b>	BRIDGE REHABILITATION CITY STREET (ROCKWELL AVENUE): OVER I-40, 2.0 MILES EAST OF THE CANADIAN COUNTY LINE IN OKLAHOMA CITY. PROJECT LENGTH = 0.115 MILE			
<b>Contract Amount:</b>	\$1,289,463.49	<b>Funds Available:</b>	\$1,492,181.30	<b>Funds Paid(%) :</b> 99%
<b>Change Order</b>	7	<b>Original Time Used:</b>	98%	<b>Revised Time Used:</b> 98%

Request approval of Change Order No. 7 for a supplemental agreement and an additional appropriation in the amount of \$2,500.00.

Site Requirement: This change provides payment for the additional work required to maintain three open lanes of traffic on I-40 during peak hours in lieu of reducing back down to two for multiple days as originally planned while completing electrical work on the piers in the center median.

**NEW ITEM**

**\$2,500.00**

Construction Traffic Control (Remobilization) 1.00 LS \$2,500.00 /LS \$2,500.00

CHANGE ORDER ACTIONS						
CHANGE ORDER NO.	(+ Overrun - Underrun Amount (\$)	%	Appropriated Amount (\$)	%	Supplemental Agreement Amount(\$)	%
1	\$0.00	0.00%	\$0.00	0.00%	\$0.00	0.00%
2	\$10,350.00	0.80%	\$10,350.00	0.80%	\$0.00	0.00%
3	\$8,550.00	0.66%	\$8,550.00	0.66%	\$8,550.00	0.66%
4	\$27,845.07	2.16%	\$27,845.07	2.16%	\$0.00	0.00%
5	\$87,127.00	6.76%	\$87,127.00	6.76%	\$0.00	0.00%
6	\$68,845.74	5.34%	\$68,845.74	5.34%	\$0.00	0.00%
7	\$2,500.00	0.19%	\$2,500.00	0.19%	\$2,500.00	0.19%
8	\$14,026.10	1.09%	\$14,026.10	1.09%	\$0.00	0.00%
<b>TOTAL</b>	<b>\$219,243.91</b>	<b>17.00%</b>	<b>\$219,243.91</b>	<b>17.00%</b>	<b>\$11,050.00</b>	<b>0.86%</b>

## Change Orders with Cumulative Total Greater than \$75,000

**January 09, 2023 Commission Meeting**

<b>Project Number:</b>	SBR-4000(124)SB	<b>Contract ID:</b>	210215	<b>AGENDA ITEM</b>
<b>Contractor :</b>	K & R BUILDERS, INC.	<b>Job Piece No.:</b>	34233(04)	<b>70</b>
<b>Designer:</b>	FREESE & NICOLES, INC.	<b>Highway No.:</b>	CITY STREET	
<b>Description:</b>	BRIDGE REHABILITATION CITY STREET (ROCKWELL AVENUE): OVER I-40, 2.0 MILES EAST OF THE CANADIAN COUNTY LINE IN OKLAHOMA CITY. PROJECT LENGTH = 0.115 MILE			
<b>Contract Amount:</b>	\$1,289,463.49	<b>Funds Available:</b>	\$1,492,181.30	<b>Funds Paid(%) :</b> 99%
<b>Change Order</b>	8	<b>Original Time Used:</b>	98%	<b>Revised Time Used:</b> 98%

Request approval of Change Order No. 8 for a supplemental agreement and an additional appropriation in the amount of \$14,026.10.

Site Requirement: This change provides payment for the overrun of the solid slab sodding pay item required to provide adequate permanent erosion control on all disturbed areas of the project due to more areas being disturbed than originally planned.

<b>OVERRUN ITEM</b>	<b>\$14,026.10</b>
Solid Slab Sodding	1,275.10 SY      \$11.00 /SY      \$14,026.10

CHANGE ORDER ACTIONS						
CHANGE ORDER NO.	(+ Overrun (-) Underrun Amount (\$)	%	Appropriated Amount (\$)	%	Supplemental Agreement Amount(\$)	%
1	\$0.00	0.00%	\$0.00	0.00%	\$0.00	0.00%
2	\$10,350.00	0.80%	\$10,350.00	0.80%	\$0.00	0.00%
3	\$8,550.00	0.66%	\$8,550.00	0.66%	\$8,550.00	0.66%
4	\$27,845.07	2.16%	\$27,845.07	2.16%	\$0.00	0.00%
5	\$87,127.00	6.76%	\$87,127.00	6.76%	\$0.00	0.00%
6	\$68,845.74	5.34%	\$68,845.74	5.34%	\$0.00	0.00%
7	\$2,500.00	0.19%	\$2,500.00	0.19%	\$2,500.00	0.19%
8	\$14,026.10	1.09%	\$14,026.10	1.09%	\$0.00	0.00%
<b>TOTAL</b>	<b>\$219,243.91</b>	<b>17.00%</b>	<b>\$219,243.91</b>	<b>17.00%</b>	<b>\$11,050.00</b>	<b>0.86%</b>



## Change Orders with Cumulative Total Greater than \$75,000

**January 09, 2023 Commission Meeting**

<b>Project Number:</b>	STP-257B(090)PM	<b>Contract ID:</b>	220138	<b>AGENDA ITEM</b>
<b>Contractor :</b>	PARADIGM CONSTRUCTION & ENGINEERING, INC	<b>Job Piece No.:</b>	29686(04)	<b>7P</b>
		<b>Highway No.:</b>	SH-99	
<b>Designer:</b>	OKLA. DEPT. OF TRANSPORTATION	<b>Div. / County.:</b>	08 / OSAGE	
<b>Description:</b>	BRIDGE AND APPROACHES SH-99: OVER PENN CREEK, 0.4 MILES NORTH OF THE SH-20 JUNCTION NEAR HOMINY. PROJECT LENGTH = 0.155 MILE			
<b>Contract Amount:</b>	\$4,071,718.85	<b>Funds Available:</b>	\$4,144,076.35	<b>Funds Paid(%) :</b> 15%
<b>Change Order</b>	3	<b>Original Time Used:</b>	0%	<b>Revised Time Used:</b> 0%

Request approval of Change Order No. 3 for a supplemental agreement and an additional appropriation in the amount of \$40,990.05.

Site Requirement: This change provides payment for the clearing and grubbing pay item required to clear the areas of vegetation necessary for construction due to significant growth occurring since the design phase.

This change extends the contract time eleven days to complete this additional work.

**NEW ITEM**

**\$40,990.05**

Clearing and Grubbing	1.00 LS	\$40,990.05 /LS	\$40,990.05
-----------------------	---------	-----------------	-------------

CHANGE ORDER ACTIONS						
CHANGE ORDER NO.	(+ Overrun (-) Underrun Amount (\$)	%	Appropriated Amount (\$)	%	Supplemental Agreement Amount(\$)	%
1	\$4,420.00	0.11%	\$4,420.00	0.11%	\$0.00	0.00%
2	\$67,937.50	1.67%	\$67,937.50	1.67%	\$67,937.50	1.67%
3	\$40,990.05	1.01%	\$40,990.05	1.01%	\$40,990.05	1.01%
<b>TOTAL</b>	<b>\$113,347.55</b>	<b>2.78%</b>	<b>\$113,347.55</b>	<b>2.78%</b>	<b>\$108,927.55</b>	<b>2.68%</b>

## Change Orders with Cumulative Total Greater than \$75,000

**January 09, 2023 Commission Meeting**

<b>Project Number:</b>	STP-260B(056)PM				<b>AGENDA ITEM</b>
		<b>Contract ID:</b>	210085	<b>7Q</b>	
<b>Contractor :</b>	DUIT CONSTRUCTION COMPANY, INC.		<b>Job Piece No.:</b>		
			<b>Highway No.:</b>	US-177	
<b>Designer:</b>	OLSSON		<b>Div. / County.:</b>	04 / PAYNE	
<b>Description:</b>	GRADE, DRAIN, AND SURFACE US-177: FROM 0.2 MILES NORTH OF THE SH-51 JUNCTION, EXTEND NORTH IN STILLWATER. PROJECT LENGTH = 2.785 MILES				
<b>Contract Amount:</b>	\$17,627,610.31	<b>Funds Available:</b>	\$17,776,525.71	<b>Funds Paid(%) :</b>	40%
<b>Change Order</b>	2	<b>Original Time Used:</b>	41%	<b>Revised Time Used:</b>	41%

Request approval of Change Order No. 2 for a supplemental agreement and an additional appropriation in the amount of \$114,727.58.

Site Requirement: This change provides payment for the additional work required to relocate the 12-inch waterline on McElroy Road due to this line being in conflict with installation of the proposed storm sewer system, and due to the City of Stillwater failing to perform the relocation before construction as planned. Funding for this work will be non-participating in nature.

<b>NEW ITEM (NON-PARTICIPATING)</b>	<b>\$114,727.58</b>
Construction Miscellaneous (Waterline Relocation)	1.00 LS      \$114,727.58 /LS      \$114,727.58

<b>CHANGE ORDER ACTIONS</b>						
CHANGE ORDER NO.	(+ Overrun (-) Underrun Amount (\$)	%	Appropriated Amount (\$)	%	Supplemental Agreement Amount(\$)	%
1	\$148,915.40	0.84%	\$148,915.40	0.84%	\$148,915.40	0.84%
2	\$114,727.58	0.65%	\$114,727.58	0.65%	\$114,727.58	0.65%
<b>TOTAL</b>	<b>\$263,642.98</b>	<b>1.50%</b>	<b>\$263,642.98</b>	<b>1.50%</b>	<b>\$263,642.98</b>	<b>1.50%</b>

## Change Orders with Cumulative Total Greater than \$75,000

**January 09, 2023 Commission Meeting**

<b>Project Number:</b>	STP-266B(081)PM				<b>AGENDA ITEM</b>
			<b>Contract ID:</b>	200355	<b>7R</b>
<b>Contractor :</b>	EMERY SAPP & SONS, INC.		<b>Job Piece No.:</b>	27031(04)	
			<b>Highway No.:</b>	SH-20	
<b>Designer:</b>	GARVER ENGINEERING		<b>Div. / County.:</b>	08 / ROGERS	
<b>Description:</b>	GRADE, DRAIN, SURFACE, AND BRIDGE SH-20: FROM 4.4 MILES EAST OF THE US-169 INTERCHANGE, EXTEND EAST NEAR CLAREMORE. PROJECT LENGTH = 3.920 MILES				
<b>Contract Amount:</b>	\$44,114,557.47	<b>Funds Available:</b>	\$44,353,976.63	<b>Funds Paid(%) :</b>	98%
<b>Change Order</b>	7	<b>Original Time Used:</b>	101%	<b>Revised Time Used:</b>	101%

Request approval of Change Order No. 7 for a supplemental agreement and an additional appropriation in the amount of \$1,327,098.09.

Site Requirement: This change provides payment for the overrun of the rock excavation pay item required to complete the earthwork activities as planned due to the rock elevation being higher than expected throughout much of the project; for the overrun of the temporary silt fence pay item required to provide adequate temporary erosion control throughout the project due to an apparent underestimation of the contract amount; and for the overrun of the aggregate base pay item required to replace areas of unsuitable subgrade material discovered during construction. This change extends the contract time eighty-five days (fifty days due to utility related delays, and thirty-five days due to a conflict between Pier No. 2 and an existing pier).

<b>OVERRUN ITEMS</b>	<b>\$1,280,243.70</b>
Rock Excavation	163,078.40 CY      \$7.50 /CY      \$1,223,088.00
Temporary Silt Fence	27,217.00 LF      \$2.10 /LF      \$57,155.70
<b>OVERRUN OF PREVIOUSLY ESTABLISHED C/O ITEM</b>	<b>\$46,854.39</b>
Aggregate Base Type A	1,142.79 CY      \$41.00 /CY      \$46,854.39

CHANGE ORDER ACTIONS						
CHANGE ORDER NO.	(+ Overrun - Underrun Amount (\$))	%	Appropriated Amount (\$)	%	Supplemental Agreement Amount(\$)	%
1	-\$145,135.61	-0.33%	\$0.00	0.00%	\$0.00	0.00%
2	\$5,079.03	0.01%	\$5,079.03	0.01%	\$5,079.03	0.01%
3	-\$157,192.47	-0.36%	\$0.00	0.00%	\$0.00	0.00%
4	\$9,082.38	0.02%	\$9,082.38	0.02%	\$9,082.38	0.02%
5	\$218,307.80	0.49%	\$218,307.80	0.49%	\$218,307.80	0.49%
6	\$6,949.95	0.02%	\$6,949.95	0.02%	\$6,949.95	0.02%
7	\$1,327,098.09	3.01%	\$1,327,098.09	3.01%	\$46,854.39	0.11%
<b>TOTAL</b>	<b>\$1,264,189.17</b>	<b>2.87%</b>	<b>\$1,566,517.25</b>	<b>3.55%</b>	<b>\$286,273.55</b>	<b>0.65%</b>

## Change Orders with Cumulative Total Greater than \$75,000

**January 09, 2023 Commission Meeting**

<b>Project Number:</b>	STP-266N(094)PM				<b>AGENDA ITEM</b>
			<b>Contract ID:</b>	210067	<b>7S</b>
<b>Contractor :</b>	C3 CONSTRUCTION, INC.		<b>Job Piece No.:</b>	34222(04)	
			<b>Highway No.:</b>	SH-20	
<b>Designer:</b>	OKLA. DEPT. OF TRANSPORTATION		<b>Div. / County.:</b>	08 / ROGERS	
<b>Description:</b>	PAVEMENT REHABILITATION (A.C. AND P.C.) SH-20: FROM THE SH-66 JUNCTION, EXTEND EAST IN CLAREMORE. PROJECT LENGTH = 1.440 MILES				
<b>Contract Amount:</b>	\$4,607,826.12	<b>Funds Available:</b>	\$5,063,778.89	<b>Funds Paid(%) :</b>	100%
<b>Change Order</b>	6	<b>Original Time Used:</b>	123%	<b>Revised Time Used:</b>	95%

Request approval of Change Order No. 6 for an additional appropriation in the amount of \$399,147.57.

Site Requirement: This change provides payment for the overrun of the concrete pavement pay items required to replace numerous street returns to properly tie into the mainline due to being more deteriorated than expected; for the overrun of the asphalt surfacing pay items due to the existing cross slopes under the guardrail widening areas being steeper than allowed; and for the overrun of the temporary traffic control pay items required to provide adequate direction to the traveling public during construction due to the extended duration of this project.

**OVERRUN ITEMS**

**\$399,147.58**

Superpave, Type S3 (PG 64-22 OK)	127.92 TON	\$95.06 /TON	\$12,160.08
Superpave, Type S4 (PG 64-22 OK)	23.62 TON	\$138.38 /TON	\$3,268.54
Dowel Jointed P. C. Concrete Pavement (Placement )	383.02 SY	\$21.12 /SY	\$8,089.38
P. C. Concrete for Pavement	1,139.40 CY	\$120.89 /CY	\$137,742.07
Arrow Display (Type C)	266.00 SD	\$5.01 /SD	\$1,332.66
Construction Signs 0 to 6.25 SF	7,145.00 SD	\$2.00 /SD	\$14,290.00
Construction Signs 6.26 SF to 15.99 SF	33,397.00 SD	\$3.00 /SD	\$100,191.00
Construction Signs 16.0 SF to 32.99 SF	4,144.00 SD	\$1.00 /SD	\$4,144.00
Construction Barricades (Type III)	13,447.00 SD	\$0.25 /SD	\$3,361.75
Warning Lights (Type A)	46,662.00 SD	\$1.00 /SD	\$46,662.00
Tube Channelizers	107,124.00 SD	\$0.50 /SD	\$53,562.00
Port. Changeable Message Sign	955.00 SD	\$15.02 /SD	\$14,344.10

**CHANGE ORDER ACTIONS**

CHANGE ORDER NO.	(+ Overrun (-) Underrun Amount (\$)	%	Appropriated Amount (\$)	%	Supplemental Agreement Amount(\$)	%
1	\$97,395.43	2.11%	\$97,395.43	2.11%	\$97,395.43	2.11%
2	\$103,939.25	2.26%	\$103,939.25	2.26%	\$103,939.25	2.26%
3	\$229,118.09	4.97%	\$229,118.09	4.97%	\$229,118.09	4.97%
4	\$25,500.00	0.55%	\$25,500.00	0.55%	\$25,500.00	0.55%
5	\$0.00	0.00%	\$0.00	0.00%	\$0.00	0.00%
6	\$399,147.57	8.66%	\$399,147.57	8.66%	\$0.00	0.00%
<b>TOTAL</b>	<b>\$855,100.34</b>	<b>18.56%</b>	<b>\$855,100.34</b>	<b>18.56%</b>	<b>\$455,952.77</b>	<b>9.90%</b>

## Change Orders with Cumulative Total Greater than \$75,000

**January 09, 2023 Commission Meeting**

<b>Project Number:</b>	STP-270C(041)PM	<b>Contract ID:</b>	210258	<b>AGENDA ITEM</b>
<b>Contractor :</b>	J & R SAND COMPANY, INC.	<b>Job Piece No.:</b>	24241(07)	<b>7T</b>
		<b>Highway No.:</b>	SH-136	
<b>Designer:</b>	OKLA. DEPT. OF TRANSPORTATION	<b>Div. / County.:</b>	06 / TEXAS	
<b>Description:</b>	GRADE AND SURFACE SH-136: FROM THE TEXAS STATE LINE, EXTEND NORTH. PROJECT LENGTH = 4.469 MILES			
<b>Contract Amount:</b>	\$12,453,375.35	<b>Funds Available:</b>	\$13,396,082.01	<b>Funds Paid(%) :</b> 86%
<b>Change Order</b>	4	<b>Original Time Used:</b>	114%	<b>Revised Time Used:</b> 109%

Request approval of Change Order No. 4 for a supplemental agreement and an additional appropriation in the amount of \$4,500.00.

Site Requirement: This change provides payment for the traffic control subcontractor to remobilize to the project site and temporarily shift traffic onto the mainline while repairs could be made to the detour due to flooding.

<b>NEW ITEM</b>	<b>\$4,500.00</b>
Mobilization (Remobilizations)	1.00 LS      \$4,500.00 /LS      \$4,500.00

CHANGE ORDER ACTIONS						
CHANGE ORDER NO.	(+) Overrun (-) Underrun Amount (\$)	%	Appropriated Amount (\$)	%	Supplemental Agreement Amount(\$)	%
1	\$60,620.00	0.49%	\$60,620.00	0.49%	\$60,620.00	0.49%
2	\$7,815.00	0.06%	\$7,815.00	0.06%	\$7,815.00	0.06%
3	-\$6.00	0.00%	\$0.00	0.00%	\$0.00	0.00%
4	\$4,500.00	0.04%	\$4,500.00	0.04%	\$4,500.00	0.04%
5	\$874,271.66	7.02%	\$874,271.66	7.02%	\$0.00	0.00%
<b>TOTAL</b>	<b>\$947,200.66</b>	<b>7.61%</b>	<b>\$947,206.66</b>	<b>7.61%</b>	<b>\$72,935.00</b>	<b>0.59%</b>

## Change Orders with Cumulative Total Greater than \$75,000

**January 09, 2023 Commission Meeting**

<b>Project Number:</b>	NHPP-030N(080)3P				<b>AGENDA ITEM</b>
			<b>Contract ID:</b>	220153	<b>7U</b>
<b>Contractor :</b>	IOWA CIVIL CONTRACTING, INC.		<b>Job Piece No.:</b>	33783(04)	
			<b>Highway No.:</b>	US-169	
<b>Designer:</b>	OKLA. DEPT. OF TRANSPORTATION		<b>Div. / County.:</b>	08 / TULSA	
<b>Description:</b>	PAVEMENT REHABILITATION (P.C. CONCRETE) US-169 (NB LANES ONLY): FROM 1.54 MILES SOUTH OF THE SH-20E JUNCTION, EXTEND NORTH NEAR OWASSO. PROJECT LENGTH = 4.550 MILES				
<b>Contract Amount:</b>	\$3,426,170.34	<b>Funds Available:</b>	\$3,426,170.34	<b>Funds Paid(%) :</b>	73%
<b>Change Order</b>	1	<b>Original Time Used:</b>	50%	<b>Revised Time Used:</b>	50%

Request approval of Change Order No. 1 for an additional appropriation in the amount of \$500,815.28.

Site Requirement: This change provides payment for the overrun of the concrete patching pay items due to more areas needing patched than originally estimated. This change documents the underrun of the aggregate base pay item due to not being necessary to complete the patching on the mainline; and for the underrun of the dowel bar retrofit due to more areas being patched instead. This change extends the contract time thirty days to complete the additional patching.

<b>OVERRUN ITEMS</b>				<b>\$553,756.12</b>
Full Depth P. C. C. Patch (Placement)	3,063.43 SY	\$127.15 /SY		\$389,515.12
P. C. Concrete for Pavement	938.52 CY	\$175.00 /CY		\$164,241.00
<b>UNDERRUN ITEMS</b>				<b>-\$52,940.84</b>
Aggregate Base Type A	-548.35 CY	\$55.00 /CY		-\$30,159.25
Dowel Bar Retrofit	-403.00 EA	\$56.53 /EA		-\$22,781.59

<b>CHANGE ORDER ACTIONS</b>						
CHANGE ORDER NO.	(+) Overrun (-) Underrun Amount (\$)	%	Appropriated Amount (\$)	%	Supplemental Agreement Amount(\$)	%
1	\$500,815.28	14.62%	\$500,815.28	14.62%	\$0.00	0.00%
<b>TOTAL</b>	<b>\$500,815.28</b>	<b>14.62%</b>	<b>\$500,815.28</b>	<b>14.62%</b>	<b>\$0.00</b>	<b>0.00%</b>

## Change Orders with Cumulative Total Greater than \$75,000

**January 09, 2023 Commission Meeting**

<b>Project Number:</b>	NHPPI-4400(054)PM / NHPPI-4400(077)PM				<b>AGENDA ITEM</b>
		<b>Contract ID:</b>	200270		<b>7V</b>
<b>Contractor :</b>	SHERWOOD CONSTRUCTION CO., INC.		<b>Job Piece No.:</b>	33788(04)	
			<b>Highway No.:</b>	I-44	
<b>Designer:</b>	GARVER ENGINEERING		<b>Div. / County.:</b>	08 / TULSA	
<b>Description:</b>	INTERCHANGE AND BRIDGE AND APPROACHES I-44: AT THE US-75 INTERCHANGE, 1.7 MILES EAST OF I-244 AND OVER UNION AVENUE, 1.5 MILES EAST OF I-244 IN TULSA. PROJECT LENGTH = 1.902 MILES				
<b>Contract Amount:</b>	\$87,207,268.73	<b>Funds Available:</b>	\$88,524,273.73	<b>Funds Paid(%) :</b>	96%
<b>Change Order</b>	13	<b>Original Time Used:</b>	70%	<b>Revised Time Used:</b>	70%

Request approval of Change Order No. 13 for a supplemental agreement and an additional appropriation in the amount of \$137,139.90.

Site Requirement: This change provides payment for the rock excavation pay item due to encountering rock at several locations during excavation; for the wood privacy fence pay item required to replace a section of existing fence due to conflicts with the reconstruction of a driveway; for the additional work required to tap three unknown utilities discovered during construction to determine if they were live or abandoned; and for the water meter cans pay items due to these pay items being inadvertently omitted from the contract. This change documents the underrun of the epoxy coated reinforcing steel pay item due to three moment slabs not being necessary to construct as planned.

<b>NEW ITEMS</b>	<b>\$173,576.20</b>
Construction Miscellaneous (Utility Taps)	3.00 EA      \$2,750.00 /EA      \$8,250.00
Construction Miscellaneous (3/4" Water Meter Cans)	12.00 EA      \$435.28 /EA      \$5,223.36
Construction Miscellaneous (2" Water Meter Cans)	2.00 EA      \$1,149.92 /EA      \$2,299.84
Wood Privacy Fence	200.00 LF      \$89.54 /LF      \$17,908.00
Rock Excavation	5,710.00 CY      \$24.50 /CY      \$139,895.00
<b>UNDERRUN ITEM</b>	<b>-\$36,436.30</b>
Epoxy Coated Reinforcing Steel	-28,690.00 LB      \$1.27 /LB      -\$36,436.30

CHANGE ORDER ACTIONS						
CHANGE ORDER NO.	(+) Overrun (-) Underrun Amount (\$)	%	Appropriated Amount (\$)	%	Supplemental Agreement Amount(\$)	%
1	\$0.00	0.00%	\$0.00	0.00%	\$0.00	0.00%
2	\$90.83	0.00%	\$90.83	0.00%	\$90.83	0.00%
3	\$500,653.90	0.57%	\$500,653.90	0.57%	\$265,341.06	0.30%
4	-\$167,301.54	-0.19%	\$0.00	0.00%	\$0.00	0.00%
5	-\$494,082.54	-0.57%	\$0.00	0.00%	\$0.00	0.00%
6	\$0.00	0.00%	\$0.00	0.00%	\$0.00	0.00%
7	-\$40,549.05	-0.05%	\$0.00	0.00%	\$0.00	0.00%
8	\$0.00	0.00%	\$0.00	0.00%	\$0.00	0.00%
9	\$120,000.00	0.14%	\$120,000.00	0.14%	\$0.00	0.00%
10	\$53,306.79	0.06%	\$53,306.79	0.06%	\$53,306.79	0.06%
11	\$102,953.48	0.12%	\$102,953.48	0.12%	\$62,631.53	0.07%
12	\$540,000.00	0.62%	\$540,000.00	0.62%	\$0.00	0.00%
13	\$137,139.90	0.16%	\$137,139.90	0.16%	\$137,139.90	0.16%
14	\$0.00	0.00%	\$0.00	0.00%	\$0.00	0.00%
<b>TOTAL</b>	<b>\$752,211.77</b>	<b>0.86%</b>	<b>\$1,454,144.90</b>	<b>1.67%</b>	<b>\$518,510.11</b>	<b>0.59%</b>

**STATEMENT OF OVERRUNS AND UNDERRUNS  
ON PROJECTS APPROVED BY THE CONSTRUCTION DIVISION  
FOR FINAL PAYMENT THE MONTH OF NOVEMBER, 2022**

Project	County Name	Contract Amount	Amount Paid	Overrun	Underrun	Percent Overrun	Explanation of Overrun or 10% or more Underrun
ACSTP-135B(086)SS	JOHNSTON	\$11,018,314.20	\$11,011,083.12	\$0.00	(\$7,231.08)	0.00%	
CIRB-110C(205)RB	CARTER	\$7,363,057.66	\$7,642,941.94	\$279,884.28	\$0.00	3.80%	Paid negotiated settlement, overrun paving and steel
CIRB-242D(071)RB	LOGAN	\$882,068.80	\$841,613.79	\$0.00	(\$40,455.01)	0.00%	
E-SAP-208B(109)ES	CADDO	\$192,590.80	\$222,541.22	\$29,950.42	\$0.00	15.55%	Paid incentive for early completion, overrun bridge repair
HSIPG-251N(074)TR/ NHPP-251N(073)	MUSKOGEE	\$1,446,978.38	\$1,236,484.70	\$0.00	(\$210,493.68)	0.00%	Liquidated damages and disincentives assessed
NHPP-225N(095)AD	GARVIN	\$561,751.00	\$595,000.56	\$33,249.56	\$0.00	5.92%	Overrun handrails and traffic control
NHPP-261N(096)3P	PITTSBURG	\$1,400,194.80	\$1,442,046.48	\$41,851.68	\$0.00	2.99%	Asphalt binder adjustment, overrun paving and traffic control
NHPPI-CRRS-(018)PM	MCCLAIN	\$1,631,040.30	\$1,656,362.49	\$25,322.19	\$0.00	1.55%	Paid smoothness bonus
SAP-028N(006)ES	TULSA	\$56,886.76	\$28,131.62	\$0.00	(\$28,755.14)	0.00%	Underrun traffic control
SBR-253C(059)SB	NOWATA	\$971,116.43	\$883,427.94	\$0.00	(\$87,688.49)	0.00%	
SSP-272F(308)SS	TULSA	\$1,967,929.43	\$1,895,273.88	\$0.00	(\$72,655.55)	0.00%	
STP-206D(070)CI	BLAINE	\$530,479.80	\$524,455.20	\$0.00	(\$6,024.60)	0.00%	
STP-208B(075)PM	CADDO	\$1,925,913.72	\$1,963,131.96	\$37,218.24	\$0.00	1.93%	Paid incentive for early completion
STP-220F(082)3B	CUSTER	\$553,226.00	\$435,060.02	\$0.00	(\$118,165.98)	0.00%	Underrun bridge deck repair
STP-229C(018)CI	HARMON	\$908,314.33	\$1,001,991.94	\$93,677.61	\$0.00	10.31%	Asphalt binder adjustment
STP-235C(052)CI	JOHNSTON	\$1,285,692.35	\$1,350,653.57	\$64,961.22	\$0.00	5.05%	Asphalt binder adjustment, overrun paving
STP-235D(066)CI	JOHNSTON	\$517,316.85	\$525,151.35	\$7,834.50	\$0.00	1.51%	Overrun guardrail and traffic control
STP-242C(055)PM	LOGAN	\$5,452,151.90	\$5,943,604.64	\$491,452.74	\$0.00	9.01%	Overrun excavation, erosion and traffic control
STP-249D(056)CI	MAYES	\$688,498.95	\$682,148.87	\$0.00	(\$6,350.08)	0.00%	
STP-258B(076)RW	OTTAWA	\$95,906.30	\$95,333.30	\$0.00	(\$573.00)	0.00%	
STP-276B(032)PM	WOODS	\$4,191,320.10	\$4,607,645.28	\$416,325.18	\$0.00	9.93%	Overrun drainage, erosion control, removal of bridge items
STP-CRRS(023)PM	GRANT	\$2,250,603.96	\$2,077,793.02	\$0.00	(\$172,810.94)	0.00%	
STPY-155C(611)	OKLAHOMA	\$4,046,765.06	\$4,834,490.18	\$787,725.12	\$0.00	19.47%	Overrun pavement, erosion and traffic control
TAP-272B(346)IG	TULSA	\$135,033.50	\$137,300.00	\$2,266.50	\$0.00	1.68%	Overrun traffic stripe
<b>Grand Total</b>		<b>\$50,073,151.38</b>	<b>\$51,633,667.07</b>	<b>\$2,311,719.24</b>	<b>(\$751,203.55)</b>		

THESE 24 PROJECTS RECEIVED FINAL APPROVAL BY THE CONSTRUCTION DIVISION DURING THE MONTH OF NOVEMBER, 2022  
THE ORIGINAL AMOUNT; OVERRUNS, UNDERRUNS AND THE AMOUNT PAID ON THE FINAL ESTIMATE ARE SHOWN



**FOR PRESENTATION AT THE COMMISSION MEETING OF JANUARY 9, 2023**

**AGENDA ITEM NO. 8**

**SUBJECT: PROPOSED BID OPENINGS**

**COUNTY: STATEWIDE**

**This item consists of the final February 2023 bid opening for \$102,476,486, the tentative March 2023 bid opening for \$111,706,217, and the tentative April 2023 bid opening for \$94,138,342.**

**The Department recommends Commission approval of the final February 2023, tentative March 2023, and tentative April 2023 bid openings.**

PROJECTS AWARDED			PROJECTS AWARDED		
LETTING MONTH		TOTAL	LETTING MONTH		TOTAL
DECEMBER	2020	\$ -	DECEMBER	2021	\$ -
JANUARY	2021	\$ 119,300,929	JANUARY	2022	\$ 105,912,002
FEBRUARY	2021	\$ 71,838,974	FEBRUARY	2022	\$ 101,892,375
MARCH	2021	\$ 115,701,751	MARCH	2022	\$ 138,078,068
APRIL	2021	\$ 50,580,966	APRIL	2022	\$ 75,343,267
MAY	2021	\$ 121,810,134	MAY	2022	\$ 70,083,891
JUNE	2021	\$ 69,249,343	JUNE	2022	\$ 115,014,901
JULY	2021	\$ 97,392,613	JULY	2022	\$ 175,682,771
AUGUST	2021	\$ 43,622,988	AUGUST	2022	\$ 227,040,779
SEPTEMBER	2021	\$ 52,452,432	SEPTEMBER	2022	\$ 279,553,047
OCTOBER	2021	\$ 100,904,729	OCTOBER	2022	\$ 203,822,994
NOVEMBER	2021	\$ 115,159,093	NOVEMBER	2022	\$ 82,714,369
TOTAL		\$ 958,013,951	TOTAL		\$ 1,575,138,464

JobPiece	CD	Highway	MILES	Adv Con	Federal	State	Other	Total
34362(04)	2	US069	4.900	2,429,916.18	0.00	0.00	0.00	2,429,916.18
RESURFACE								
ATOKA US-69: BEGIN 0.5 MI NORTH OF JCT SH-43E/US-69, EXT. NORTH 4.9 MI (NB ONLY)								
	NHPP	-013N	(217)	3P				
35143(04)	5	SH006	10.200	1,263,772.69	0.00	0.00	0.00	1,263,772.69
RESURFACE								
BECKHAM SH-6: BEGIN AT US-283 JCT AND EXT EAST 10.20 MILES								
	STP	-205C	(108)	3P				
36346(04)	2	SH078	5.200	1,306,778.34	0.00	0.00	0.00	1,306,778.34
RESURFACE								
BRYAN SH-78: BEGIN AT MAIN STREET IN DURANT, EXTEND NORTH 5.2 MILES								
	STP	-207B	(116)	3P				
31816(04)	7	IS040	6.040	8,779,771.79	0.00	2,194,942.95	0.00	10,974,714.74
RESURFACE								
CADDO I-40: BEGIN AT MP 89.72 AND EXT TO MP 95.76.								
	NHPPI	-4000-	(144)	PM				
35803(04)	3	CT ST	0.000	963,979.90	0.00	0.00	0.00	963,979.90
SAFETY IMPROVEMENT								
CLEVELAND SIGNAL DETECTION AND OPTICOM SYSTEM 19TH ST. CORRIDOR IN MOORE								
	STPG	-214F	(131)	AG				
31044(04)	7	SH017	0.200	3,673,023.26	0.00	918,255.81	0.00	4,591,279.07
BRIDGE & APPROACHES								
COMANCHE SH 17: OVER LITTLE BEAVER CREEK 5.80 MIS. E. OF US 277 IN ELGIN								
	STP	-216C	(112)	PM				
29596(04)	7	US070	0.100	3,972,028.06	0.00	993,007.01	0.00	4,965,035.07
BRIDGE & APPROACHES								
COTTON US-70: OVER WHISKEY CREEK APPROX 2.96 MILES W. OF JEFFERSON C/L								
	STP	-217C	(054)	PM				
33543(04)	7	COBRGE	0.160	232,134.00	0.00	0.00	1,459,280.91	1,691,414.91
BRIDGE & APPROACHES								
COTTON CO BR (EW-181) APPROXIMATELY 2.0 MILES NORTH & 3.8 MILES EAST OF JCT SH-53/SH-65								
	STP	-217D	(053)	CI			(A)	
34296(04)	8	SH010	4.940	0.00	0.00	1,356,355.57	0.00	1,356,355.57
RESURFACE								
CRAIG SH-10: FROM 13.78 MILES NORTH OF THE JUNCTION WITH SH-2, EXTEND WEST 4.98								
	SSR	-218C	(101)	SR				
35474(04)	8	SH067	1.920	0.00	0.00	1,093,087.79	0.00	1,093,087.79
RESURFACE								
CREEK SH-67: FROM US-75A, EXTEND EAST 1.92 MI.								
	SSR	-219B	(106)	SR				
31696(04)	5	IS040	0.200	4,911,367.56	0.00	4,911,367.56	0.00	9,822,735.12
BRIDGE & APPROACHES								
CUSTER US-183: AT I-40, LOCATED 10.7 MILES EAST OF THE WASHITA COUNTY LINE.								
	NHPPI	-4000-	(184)	PM				
35146(04)	5	SH073	4.730	1,705,530.46	0.00	0.00	0.00	1,705,530.46
RESURFACE								
CUSTER SH-73: BEGIN AT THE SH-44 JCT AND EXT EAST 4.73 MILES								
	STP	-220C	(090)	3P				
35146(05)	5	SH073	5.390	1,900,732.32	0.00	0.00	0.00	1,900,732.32
RESURFACE								
CUSTER SH-73: BEGIN 4.73 MILES EAST OF THE SH-44 JCT AND EXT EAST 5.39 MILES.								
	STP	-220C	(089)	3P				
35473(04)	8	SH025	5.200	0.00	0.00	1,719,722.16	0.00	1,719,722.16
RESURFACE								
DELAWARE SH-25: FROM SH-10, EXTEND TO THE MISSOURI STATE LINE								
	SSR	-221C	(063)	SR				

JobPiece	CD	Highway	MILES	Adv Con	Federal	State	Other	Total
35671(04)	4	US064	7.100	3,515,087.50	0.00	3,515,087.50	0.00	7,030,175.00
RESURFACE								
GARFIELD US-64/412: FROM NORTH 30TH ST IN ENID EXT EAST TO 114TH ST APPX 7 MILES WEST OF SH-74								
		NHPP	-224N (101)	PM				
35671(05)	4	US064	6.900	3,404,985.00	0.00	3,404,985.00	0.00	6,809,970.00
RESURFACE								
GARFIELD US-64/412: FROM 114TH ST APPX 7 MI WEST OF SH-74, EXT EAST APPRX 7 MILES TO SH-74								
		NHPP	-224N (102)	PM				
33514(04)	5	COBRGE	0.070	350,000.00	0.00	0.00	280,688.79 (A)	630,688.79
BRIDGE & APPROACHES								
GREER CO BR OVER SLEEPY JOHN CR ON EW-144, 2.0 MI N & 1.8 MI E OF REED (E144 & N186.2)								
		STP	-228D (024)	CI				
34114(04)	7	ENHAN	0.360	0.00	194,159.89	0.00	36,454.00 (B)	230,613.89
PEDESTRIAN / BIKE IMPROVEMENTS								
JEFFERSON CITY OF WAURIKA: SIDEWALKS ON E. D AVE. FROM MAIN ST. TO PINE ST.								
		TAP	-234C (055)	TP				
28984(04)	4	SH156	0.100	0.00	0.00	2,390,560.13	0.00	2,390,560.13
BRIDGE & APPROACHES								
KAY SH 156: OVER COWSKIN CREEK APPROX. 2.8 MIS. N. OF THE NOBLE C/L								
		SBR	-236C (112)	SB				
34283(04)	2	SH063	0.400	0.00	0.00	491,091.78	0.00	491,091.78
BRIDGE REHABILITATION								
LEFLORE SH-63 OVER WOODS CREEK, 10.24 MI E OF JCT US-271								
		SBR	-240C (110)	SB				
33537(04)	7	COBRGE	0.450	0.00	0.00	0.00	879,667.16 (A)	879,667.16
BRIDGE & APPROACHES								
LOVE CO BR (NS-329) AIRPORT ROAD APPROXIMATELY 0.5 MILE WEST & 2.0 MILES NORTH OF JCT I-35/SH-32								
		CIRB	-243D (046)	RB				
29729(04)	2	US070	6.100	3,003,044.93	0.00	0.00	0.00	3,003,044.93
RESURFACE								
MCCURTAIN US-70: BEGIN 0.15 MI EAST OF US-259/SH-3 JCT, EXTEND EAST 6.1 MI								
		NHPP	-245N (081)	3P				
28555(04)	8	COBRGE	0.030	20,000.00	0.00	0.00	1,663,628.72 (A)	1,683,628.72
BRIDGE & APPROACHES								
MAYES CO BR ON EW 470 OVER UNNAMED TRIB TO WICKLIFFE CREEK APPX 3.7 MI SOUTH AND 1 MILE EAST OF SPAVINAW AND 3.7 MI S AND 2.35 MI E								
		STP	-249C (079)	CI				
31069(04)	8	US412	0.200	0.00	0.00	2,562,059.01	0.00	2,562,059.01
BRIDGE REHABILITATION								
MAYES US 412: OVER GRAND RIVER LOCATED 4.0 MI E OF US 69, EAST AND WESTBOUND								
		SBR	-019N (143)	SB				
27081(04)	1	US069	4.360	0.00	0.00	3,662,994.88	0.00	3,662,994.88
RESURFACE								
MUSKOGEE US-69: BEGIN AT MCINTOSH COUNTY LINE, EXTEND NORTH 4.36 MILES								
		SSP	-251N (112)	PM				
35163(04)	1		0.000	0.00	0.00	1,055,195.18	0.00	1,055,195.18
PAVEMENT MARKING								
MUSKOGEE DIVISION 1: DIVISION WIDE STRIPING								
		SSP	-249F (078)	PM				
33776(04)	4	IS040	3.000	4,714,237.03	0.00	0.00	0.00	4,714,237.03
RESURFACE								
OKLAHOMA I-40 FROM MACARTHUR AVE TO MORGAN ROAD (BRIDGES EXCLUDED) IN OKC								
		NHPPI	-4000- (081)	3P				
32103(04)	1		0.000	0.00	0.00	267,824.90	0.00	267,824.90
BRIDGE WATER PROOF SEAL								
OKMULGEE US-75/I-40: FLOODCOATING BRIDGES ON US-75 & I-40								
		SSP	-NBIP (544)	PM				

JobPiece	CD	Highway	MILES	Adv Con	Federal	State	Other	Total
31878(04)	3	SH001	0.500	2,839,270.40	0.00	709,817.60	0.00	3,549,088.00
BRIDGE REHABILITATION								
PONTOTOC SH-1: OVER SH-19, 1.0 MILE NORTH OF SH-3								
NHPP -262N (081) PM								
36287(04)	3	IS040	0.050	0.00	0.00	174,055.20	0.00	174,055.20
BRIDGE REPAIR								
POTTAWATOMIE I-40: EMERGENCY BRIDGE JOINT REPLACEMENT, I-40 WB OVER OLD US 270								
STRUCTURE 6340 0762NX, NBI 31370								
E-SAP -4000 (179) ES								
36087(04)	8	IS044	0.100	0.00	0.00	267,641.52	0.00	267,641.52
BRIDGE REPAIR								
ROGERS I-44: BRIDGE FIRE DAMAGE REPAIRS, I-44/US-412 OVER SPUNKY CREEK								
NBI: 27110, STRUCTURE ID: 6636 0426SX								
SAP -4400 (105) ES								
30402(04)	6	US054	2.470	13,389,103.94	0.00	3,347,275.99	0.00	16,736,379.93
GRADE, DRAIN & SURFACE								
TEXAS US-54: BEGIN AT 5TH ST, EXTEND NE 2.47 MILES TO HURLIMAN ST. IN GUYMON								
NHPP -008N (109) PM								
35475(04)	8	SH067	0.760	0.00	0.00	552,514.65	0.00	552,514.65
RESURFACE								
TULSA SH-67: FROM CREEK COUNTY LINE, EXTEND EAST 0.76 MI.								
SSR -272B (377) SR								
33 PROJECTS			GRAND-TOTALS	62,374,763.36	194,159.89	35,587,842.19	4,319,719.58	102,476,485.02

OTHER FUNDING CATEGORIES:

- (A) CO. IMPROVE. ROAD & BRIDGE
- (B) LOCAL /CITY MATCHING FUNDS

PREPARED BY PROGRAMS DIVISION

JobPiece	CD	Highway	MILES	Adv Con	Federal	State	Other	Total
32908(04)	6	US064	0.560	0.00	326,000.00	0.00	0.00	326,000.00
ALFALFA	A.D.A. PROJECTS FOR COMPLIANCE US-64: FROM W 12TH TO W 4TH ST (CHEROKEE) STP -202C (064) AD							
35169(04)	6	US064	0.580	0.00	837,345.66	0.00	0.00	837,345.66
ALFALFA	A.D.A. PROJECTS FOR COMPLIANCE US-64: FROM W 12TH TO CO RD E0190 (CHEROKEE OK) STP -202C (067) AD							
30405(04)	5	IS040B	1.900	0.00	0.00	2,500,000.00	0.00	2,500,000.00
BECKHAM	RESURFACE I-40B: BEGIN .35 MI EAST OF THE SH-6 JCT AND EXT EAST 1.9 MI. SSR -205B (106) SR							
36161(04)	5	US270	3.400	0.00	0.00	3,500,000.00	0.00	3,500,000.00
BLAINE	RESURFACE US-270 & SH-3, BEGIN 2.45 M W OF THE US-270/SH-3 JCT IN WATONGA AND EXT E 2.45 ON US-270 AND THEN EXT E ON SH-3 FOR .95 M. SSR -017N (292) SR							
33893(04)	7	US062	0.400	0.00	361,401.00	0.00	0.00	361,401.00
CADDO	A.D.A. PROJECTS FOR COMPLIANCE US-62: BEGIN 7.20 MI. E. OF JCT SH-9, EXT. N. 0.40 MILES (ANADARKO) NHPP -208N (115) AD							
32827(04)	7	SH076	0.490	0.00	577,775.00	0.00	0.00	577,775.00
CARTER	RESURFACE SH-76: FROM SH-70A WEST 0.49 MILES STP -210C (100) 3P							
35555(04)	7	SH199	7.350	0.00	0.00	5,808,466.00	0.00	5,808,466.00
CARTER	RESURFACE SH-199: FROM 0.07 MIS. E. OF SH-142, EXTEND E. 7.35 MIS. TO 0.38 MIS. E. OF US-177 SSP -210B (096) PM							
34381(04)	2	US070	0.910	0.00	533,300.00	0.00	0.00	533,300.00
CHOCTAW	A.D.A. PROJECTS FOR COMPLIANCE US-70: BEGIN 3.5 MI EAST OF THE CHOCTAW/BRYAN C/L, EXTEND EAST 0.91 MI NHPP -212N (068) AD							
35152(04)	6	SH325	14.000	0.00	3,050,000.00	0.00	0.00	3,050,000.00
CIMARRON	RESURFACE SH-325: BEGIN 10 MI EAST OF NEW MEXICO S/L, EXTEND EAST 14 MILES STP -213C (035) 3P							
34346(04)	3	SH003	7.360	0.00	2,000,000.00	0.00	0.00	2,000,000.00
COAL	RESURFACE SH-3: BEGIN AT THE PONTOTOC C/L, EXTEND EAST 7.36 MI NHPP -017N (291) 3P							
35179(04)	7	SH036	0.040	0.00	0.00	1,800,000.00	0.00	1,800,000.00
COMANCHE	BRIDGE REHABILITATION SH-36 OVER PERSIMMON & E. PERSIMMON CR.; 3.7 MI. & 4.3 MI. NE OF TILLMAN CL SBR -216B (113) SB							
35553(04)	7	US062	7.900	0.00	0.00	6,700,000.00	0.00	6,700,000.00
COMANCHE	RESURFACE US-62: FROM 0.44 MIS. W. OF SH-115, EXTEND E. 7.90 MIS. SSP -216N (109) PM							
35554(04)	7	SH049	3.440	0.00	0.00	2,939,382.00	0.00	2,939,382.00
COMANCHE	RESURFACE SH-49: FROM 0.09 MIS. E. OF SH-58, EXTEND E. 3.44 MIS. TO APACHE GATE SSP -216C (110) PM							
33826(04)	8	SH097	3.210	0.00	2,777,320.00	723,760.00	0.00	3,501,080.00
CREEK	SAFETY IMPROVEMENT SH-97: FROM 91ST STREET TO 51ST STREET (SAFETY IMPROVEMENTS) NHPP -219N (094) PM							

JobPiece	CD	Highway	MILES	Adv Con	Federal	State	Other	Total
28708(04)	5	CO RD	2.000	0.00	0.00	0.00	6,515,185.15 (A)	6,515,185.15
WIDEN & RESURFACE CUSTER CO RD MAJOR COL.GRADE DRAIN SURFACE LAWTER RD.EW-101 FROM SH-54 E. 2.0 MI								
		CIRB	-220B (084)	RB				
34320(04)	4	SH074	4.050	0.00	900,000.00	0.00	0.00	900,000.00
RESURFACE GARFIELD SH-74 FROM JCT SH-15, NORTH 6.91 MILES								
		STP	-224C (098)	3P				
36308(04)	4	SH015	6.500	0.00	900,000.00	0.00	0.00	900,000.00
RESURFACE GARFIELD SH-74: FROM GARBER; EXTEND NORTH 6.5 MILES TO SH-15								
		STP	-224C (103)	3P				
34320(05)	4	SH074	6.130	0.00	500,000.00	0.00	0.00	500,000.00
RESURFACE GRANT SH-74 FROM 2.85 MILES NORTH OF THE GARFIELD C/L, NORTH 3.28 MILES TO JCT US-60								
		STP	-227C (065)	3P				
34324(04)	4	US064	10.010	0.00	1,200,000.00	0.00	0.00	1,200,000.00
RESURFACE GRANT US-64: FROM SH-132, EXTEND EAST TO US-81								
		STP	-227C (066)	3P				
28664(04)	6	CO RD	3.130	0.00	840,909.00	0.00	4,045,323.95 (A)	4,886,232.95
GRADE,DRAIN,BRIDGE & SURFACE HARPER CO RD ON NS-198/199, BEGIN AT EW-27 AND EXTEND NORTH 3.0 MILES								
		STP	-230C (043)	CI				
34412(04)	5	US062	0.500	0.00	493,800.00	0.00	0.00	493,800.00
A.D.A. PROJECTS FOR COMPLIANCE JACKSON US-62: FROM .7 MILES WEST OF JCT SH-34, EXTEND EAST 0.5 MILES IN EAST DUKE								
		NHPP	-020N (054)	AD				
24787(04)	4	US060	0.100	0.00	0.00	3,800,000.00	0.00	3,800,000.00
BRIDGE REHABILITATION KAY US-60: OVER THE CHIKASKIA RIVER APPROX. 1.7 MILE EAST OF US-177								
		SSP	-136N (154)	PM				
32997(04)	3	ENHAN	0.000	0.00	86,210.00	0.00	21,552.00 (C)	107,762.00
PEDESTRIAN / BIKE IMPROVEMENTS LINCOLN STROUD: SIDEWALK PROJECT								
		TAP	-241D (088)	TP				
34348(04)	3	SH009	4.760	0.00	2,150,000.00	0.00	0.00	2,150,000.00
RESURFACE MCCLAIN SH-9: BEGIN AT JCT US-62, EXTEND EAST 4.76 MI								
		NHPP	-244N (088)	3P				
34369(04)	1	US266	4.340	0.00	1,860,000.00	0.00	0.00	1,860,000.00
RESURFACE MCINTOSH US-266: BEGIN 2.67 MI EAST OF US-69 JCT, EXT EAST 4.34 MI								
		STP	-246C (053)	3P				
35479(04)	8	US069	1.490	0.00	1,690,000.00	0.00	0.00	1,690,000.00
RESURFACE MAYES US-69: FROM 0.19 MI NORTH OF US-412, EXTEND NORTH 1.49 MI								
		NHPP	-013N (206)	3P				
33054(04)	1	CO RD	0.040	0.00	0.00	0.00	900,000.00 (A)	900,000.00
BRIDGE & APPROACHES MUSKOGEE REPLACE CO. BR. OVER ASH CREEK NS409 CN-018 3.85 N & 5.0 W. OF US64 & US62								
		2						
		CIRB	-251D (156)	RB				
35386(06)	4	OTA	0.000	0.00	0.00	1,000,000.00	0.00	1,000,000.00
ITS CONSTRUCTION OKLAHOMA OTA CCTV PROJECT 2023 TURNPIKE VARIOUS LOCATIONS								
		SSP	-255F (580)	IT				

JobPiece	CD	Highway	MILES	Adv Con	Federal	State	Other	Total
35922(04)	4	CT ST	0.000	0.00	786,920.00	0.00	0.00	786,920.00
OKLAHOMA		TRAFFIC SIGNALS MWC: CITY WIDE TRAFFIC SIGNALS 100% SAFETY CAPPED						
	STPG	-255F (563)	AG					
24752(05)	8	SH020	0.250	0.00	1,853,597.99	462,982.16	0.00	2,316,580.15
OSAGE		BRIDGE & APPROACHES SH-20: SYCAMORE CREEK , 7.9 MILE EAST OF SH-18						
	STP	-157C (134)	PM					
34297(04)	8	US060	5.820	0.00	1,540,000.00	0.00	0.00	1,540,000.00
OTTAWA		RESURFACE US-60: BEGIN 0.58 MILES EAST OF SH-125, EXTEND EAST 5.82 MI.						
	STP	-258B (099)	3P					
20331(10)	4	SH033	3.550	0.00	4,000,000.00	1,000,000.00	0.00	5,000,000.00
PAYNE		GRADE & DRAIN SH-33: FROM 2.62 MILES WEST OF PAYNE CL, EXTEND EAST 3.62 MILES INTO PAYNE COUNTY AT THE PAVEMENT CHANGE. EARTHWORK ONLY						
	STP	-260B (058)	PM					
20331(11)	4	SH033	6.900	0.00	3,000,000.00	3,000,000.00	0.00	6,000,000.00
PAYNE		GRADE & DRAIN SH-33: FROM 1.0 MILE EAST OF LOGAN CL, EXTEND EAST 6.9 MILE TO THE FIVE LANE SECTION. EARTHWORK ONLY						
	STP	-260B (059)	PM					
33428(04)	4	SH108	5.050	0.00	1,300,000.00	0.00	0.00	1,300,000.00
PAYNE		RESURFACE SH-108: FROM MEHAN RD NORTH TO SH-51						
	STP	-260C (053)	3P					
33794(04)	4	SH051	3.000	0.00	1,600,000.00	0.00	0.00	1,600,000.00
PAYNE		RESURFACE SH-51: FROM 0.18 MILE EAST OF US-177 EAST 2.87 MILES TO FAIRGROUNDS ROAD						
	STP	-260B (052)	3P					
32927(04)	2	COBRGE	0.050	0.00	1,360,000.00	0.00	340,000.00	1,700,000.00
PITTSBURG		BRIDGE & APPROACHES SPAN BRIDGE ON NS4200 (SWINGING BRIDGE RD) OVER N. JACKFORK CREEK 0.25 MIS S. OF SAVAGE ROAD					(A)	
	STP	-261D (094)	CI					
33602(06)	8	CO RD	4.660	0.00	15,251,698.30	0.00	3,812,924.58	19,064,622.88
ROGERS		EMERGENCY RELIEF (ER) MC# 6604C LOCATED OVER LAKE OOLAGAH. KNOWN AS WINGANON BRIDGE CAUSEWAY NBI#16640 LOCAL#14 DDIR 0523-66-01REV ER-OK17-01					(A) (B)	
	ERSTP	-266C (112)	CI					
33454(05)	7	SH007	7.990	0.00	1,552,515.00	0.00	0.00	1,552,515.00
STEPHENS		RESURFACE SH-7: FROM 15.61 MILES EAST OF US-81, EXTEND EAST 7.99 MILES						
	NHPP	-269N (078)	3P					
35559(04)	7	SH000	4.430	0.00	0.00	2,941,519.00	0.00	2,941,519.00
STEPHENS		RESURFACE DUNCAN BYPASS: FROM 700' E. OF US-81, EXTEND W. & THEN N. 4.43 MIS. TO 0.50 MIS. N. OF ELK AVENUE						
	SSP	-269N (099)	PM					
34370(04)	1	SH051	2.350	0.00	1,566,330.00	0.00	0.00	1,566,330.00
WAGONER		RESURFACE SH-51: BEGIN 1.00 MI EAST OF SH-72 JCT, EXT EAST 2.35 MI TO CONCRETE PAVEMENT SECTION (MUSKOGEE TURNPIKE)						
	STP	-273B (081)	3P					
35328(06)	9	OTA	0.000	0.00	0.00	1,000,000.00	0.00	1,000,000.00
STATEWIDE		ITS CONSTRUCTION OTA DMS PROJECT 2023 TURNPIKE VARIOUS LOCATIONS						
	SSP	-299S (329)	IT					
35336(06)	9		0.000	0.00	1,600,000.00	400,000.00	0.00	2,000,000.00
STATEWIDE		ITS CONSTRUCTION ODOT DMS PROJECT 2023 DMS AT VARIOUS LOCATIONS						
	STP	-299S (331)	IT					

JobPiece	CD	Highway	MILES	Adv Con	Federal	State	Other	Total
35416(06)	9		0.000	0.00	1,600,000.00	400,000.00	0.00	2,000,000.00
		ITS CONSTRUCTION						
STATEWIDE		ODOT CCTV PROJECT 2023						
		VARIOUS LOCATIONS						
		STP -299S (333)	IT					
43 PROJECTS			GRAND-TOTALS	0.00	58,095,121.95	37,976,109.16	15,634,985.68	111,706,216.79

OTHER FUNDING CATEGORIES:

- (A) CO. IMPROVE. ROAD & BRIDGE
- (B) COUNTY FUNDS
- (C) LOCAL /CITY MATCHING FUNDS

PREPARED BY PROGRAMS DIVISION



JobPiece	CD	Highway	MILES	Adv Con	Federal	State	Other	Total
30467(04)	6	COBRGE	0.390	0.00	0.00	0.00	800,000.00 (A)	800,000.00
ALFALFA		BRIDGE & APPROACHES BRIDGE & APPROACHES ON NS-254 OVER DRY CREEK, 3.5 MILES WEST & 0.6 MILES SOUTH OF BURLINGTON CN 1215 CT BEAMS CIRB -202D (074) RB						
31134(04)	6	COBRGE	0.140	0.00	1,200,000.00	0.00	800,000.00 (A)	2,000,000.00
BEAVER		BRIDGE & APPROACHES BRIDGE & APPROACHES ON NS 158 OVER BEAVER RIVER, 16.0 MILES WEST & 4.6 MILES NORTH OF LAVERNE CN 155 STP -204C (041) CI						
24389(04)	2	SH078	5.000	0.00	6,838,684.13	1,709,671.03	0.00	8,548,355.16
BRYAN		GRADE, DRAIN, BRIDGE & SURFACE SH-78: FROM 4.17 MI NORTH OF ACHILLE NORTH 5.0 MI TO DURANT BYPASS STP -107C (158)						
34418(04)	7	SH076	5.350	0.00	2,325,044.00	0.00	0.00	2,325,044.00
CARTER		RESURFACE SH-76: FROM JCT US-70, NORTH 5.35 MILES STP -210C (101) 3P						
28969(04)	1	SH010	0.310	0.00	1,317,978.40	5,271,913.60	0.00	6,589,892.00
CHEROKEE		BANK PROTECTION SH-10: APPROX. 12.4 MI NE. OF JCT SH-51. (ILLINOIS RIVER) STP -211C (069) PM						
32095(04)	1	SH010	9.990	0.00	612,155.20	153,038.80	0.00	765,194.00
CHEROKEE		LONGITUDINAL BARRIER SH-10: CABLE BARRIER SAFETY IMPROVEMENT FROM APPROX. 12 MI. NW OF TAHLEQUAH N. 10 MI. TO DELAWARE C/L IN ADAIR CO. STP -211C (071) PM						
30458(04)	7	CO RD	4.860	0.00	0.00	0.00	3,753,342.00 (A)	3,753,342.00
COMANCHE		GRADE, DRAIN & SURFACE GRADE, DRAIN AND SURFACE ON TRAIL ROAD (NS-265), FROM 0.7 MI S. OF SPENCER RD, 1.8 MI N. TO 0.1 MI N. OF EW 1590 D1 CIRB -216C (096) RB						
28530(04)	8	COBRGE	0.040	0.00	0.00	0.00	2,093,000.00 (A)	2,093,000.00
CRAIG		BRIDGE & APPROACHES CO RD(NS 429) OVER BIG CREEK APPROX 2.5 MILE SOUTH OF KANSAS S/L CIRB -218C (108) RB						
24134(13)	5		0.000	0.00	176,000.00	44,000.00	0.00	220,000.00
CUSTER		BRIDGE WATER PROOF SEAL DIVISION 5 SILANE TREATMENT (WATERPROOF SEAL, SITES TO DETERMINED) STP -220F (092) PM						
24868(09)	4	CO RD	1.030	0.00	0.00	0.00	1,600,000.00 (A)	1,600,000.00
GARFIELD		RESURFACE CO. RD. EW-40 (2416C) FROM SH-15 TO NS-305 1 MI D2 CIRB -224C (062) RB						
29873(04)	4	COBRGE	0.090	0.00	0.00	0.00	1,000,000.00 (A)	1,000,000.00
GARFIELD		BRIDGE & APPROACHES BR AND APP ON NS-295 OVER SKELETON CREEK, 8.0 MILES EAST AND 0.6 MILES SOUTH OF BISON CN 341 CT BEAMS D1 CIRB -224D (014) RB						
33882(04)	7	SH007	6.470	0.00	0.00	4,480,000.00	0.00	4,480,000.00
GARVIN		RESURFACE SH-7: FROM 4.00 MIS.E. OF CARTER C/L, EXTEND E. 6.47 MIS. TO I-35 SSR -225N (112) SR						
35593(04)	3	?????2	0.020	0.00	0.00	900,000.00	0.00	900,000.00
GARVIN		BRIDGE REHABILITATION SH-59B OVER DRAINAGE DITCH 2.4 MILES NORTHEAST OF SH-19 SBR -225C (114) SB						
31221(04)	4	COBRGE	0.100	0.00	640,000.00	0.00	160,000.00 (A)	800,000.00
GRANT		BRIDGE & APPROACHES BRIDGE & APPROACHES ON NS-2770 OVER SAND CREEK, 2.0 MILES WEST & 4.8 MILES SOUTH OF MANCHESTER CN 264 STP -227D (061) CI						

JobPiece	CD	Highway	MILES	Adv Con	Federal	State	Other	Total
31123(04)	7	COBRGE	0.040	0.00	0.00	0.00	820,821.00 (A)	820,821.00
JEFFERSON		BRIDGE & APPROACHES BRIDGE AND APPROACHES (EW-208) OVER TRIB. TO RED CREEK, 1.5 MILES SOUTH AND 5.9 MILES EAST OF RYAN CIRB -234D (064) RB						
33553(04)	7	COBRGE	0.030	0.00	641,701.00	0.00	3,358,299.00 (A)	4,000,000.00
JEFFERSON		BRIDGE & APPROACHES B & A FOR NBI#S 04902,04534,03396,03390,03377 ON NS-301, BEGIN APPROX 4.4 MI W, 3.0 MI N. OF SH-32/SH-89 JCT, EXTENDING N. APPROX 0.5 MI STP -234C (065) CI						
35650(04)	3	SH001	7.950	0.00	2,800,000.00	700,000.00	0.00	3,500,000.00
JOHNSTON		RESURFACE SH-1: FROM THE JUNCTION OF SH-199, NORTH 8.0 MI. STP -235C (074) PM						
34347(04)	3	SH066	3.970	0.00	850,000.00	0.00	0.00	850,000.00
LINCOLN		RESURFACE SH-66: BEGIN AT JCT SH-102, EXTEND EAST 3.97 STP -241C (091) 3P						
24219(04)	2	SH003	5.090	0.00	3,181,663.14	9,544,989.42	0.00	12,726,652.56
MCCURTAIN		GRADE, DRAIN & SURFACE SH-3: FROM JCT US-259 EXTEND WEST 5.09 MILES SSP -245N (005) SS						
35655(04)	4		0.000	0.00	800,000.00	200,000.00	0.00	1,000,000.00
NOBLE		HIGHWAY SAFETY IMPROVEMENT DISTRICT 4 GUARDRAIL STP -252F (102) PM						
32200(04)	8	COBRGE	0.030	0.00	421,939.00	0.00	105,485.00 (A)	527,424.00
NOWATA		BRIDGE & APPROACHES CO RD NS 414 AKA OKLAHOMA STREET OVER VINEGAR CREEK APPX 3.1 MI S OF KANSAS STATE LINE AT SOUTH COFFEYVILLE APPX .2 MI E OF US169 AKA BR 18 STP -253D (064) CI						
24752(04)	8	?????2	0.130	0.00	2,201,363.90	550,340.98	0.00	2,751,704.88
OSAGE		BRIDGE & APPROACHES SH-20: OVER GRAY HORSE CR APPROX. 1.6 MILE EAST OF SH-18 STP -157C (133) PM						
27084(04)	8	SH020	0.300	0.00	1,125,980.83	5,775,926.61	0.00	6,901,907.44
OSAGE		BRIDGE & APPROACHES SH-20: BUG CREEK, 11.5 MI EAST OF JCT. SH-18 STP -257C (074) PM						
35134(04)	8	US060	7.820	0.00	2,200,000.00	0.00	0.00	2,200,000.00
OSAGE		RESURFACE US-60: FROM 13.26 MILES EAST OF THE KAY COUNTY LINE, EXTEND EAST 7.82 MILES NHPP -257N (092) 3P						
31076(04)	8	?????2	0.200	0.00	681,781.94	170,446.36	0.00	852,228.30
PAWNEE		BRIDGE REHABILITATION US-64: AT KEYSTONE RD, LOCATED 19.5 MILES EAST OF SH-99 NHPP -259N (071) PM						
22973(21)	3		0.000	0.00	0.00	150,000.00	0.00	150,000.00
PONTOTOC		BRIDGE WATER PROOF SEAL DIVISION 3: BRIDGE WATER PROOFING SEAL (SILANE) SSP -262F (083) PM						
23285(14)	3		0.000	0.00	0.00	600,000.00	0.00	600,000.00
PONTOTOC		JOINT SEAL/REPAIR DIVISION 3: BRIDGE JOINT SEAL/REPAIR PROJECTS SSP -262F (082) PM						
35175(04)	3	?????2	0.260	0.00	833,400.00	0.00	0.00	833,400.00
PONTOTOC		A.D.A. PROJECTS FOR COMPLIANCE SH-1: FROM 10TH STREET IN ROFF, EAST 0.3 MILES TO 6TH ST STP -262C (084) AD						

JobPiece	CD	Highway	MILES	Adv Con	Federal	State	Other	Total
23144(18)	2		0.000	0.00	0.00	53,000.00	0.00	53,000.00
BRIDGE WATER PROOF SEAL								
PUSHMATAHA DIVISION 2: DIVISION WIDE SILANE PROJECTS (BRIDGE WATERPROOFING SEAL)								
	SSP	-264F (099)	PM					
30074(04)	5	COBRGE	0.260	0.00	0.00	0.00	2,500,000.00	2,500,000.00
BRIDGE & APPROACHES								
ROGER MILLS BRIDGE AND APPROACHES ON NS-171.5 OVER CANADIAN RIVER, 1.0 MI W & 4.5 MI N OF DURHAM								
	CIRB	-265C (028)	RB					
29781(04)	1	SH101	0.380	0.00	2,196,340.80	549,085.20	0.00	2,745,426.00
BRIDGE & APPROACHES								
SEQUOYAH SH-101: OVER POLECAT CREEK, 3.11 MILES EAST OF SH-64B JCT.								
	STP	-268C (088)	PM					
30078(07)	7		0.000	0.00	280,000.00	70,000.00	0.00	350,000.00
BRIDGE WATER PROOF SEAL								
STEPHENS DIVISION 7: BRIDGE WATER PROOF SEAL								
	STP	-269F (100)	PM					
33539(04)	7	COBRGE	0.000	0.00	533,505.00	0.00	1,639,286.00	2,172,791.00
BRIDGE & APPROACHES								
STEPHENS CO BR (EW-169) OVER SANDY BEAR CREEK, 3.5 MILES WEST AND 4.0 MILES SOUTH OF JCT SH-76/SH-29								
	STP	-269C (098)	CI					
30368(04)	8	?????2	0.100	0.00	0.00	1,428,159.64	0.00	1,428,159.64
BRIDGE REHABILITATION								
TULSA US-64: OVER 25TH WEST AVE NORTH AND SOUTHBOUND, 13.8 MILES SE OF OSAGE CO.								
	SSP	-272N (374)	PM					
33800(04)	8	?????2	0.040	0.00	0.00	2,000,000.00	0.00	2,000,000.00
BRIDGE REHABILITATION								
TULSA I-444: W.B. RAMP OVER I-244								
	SBR	-4440 (012)	SB					
36426(04)	8	IS044	0.050	0.00	0.00	300,000.00	0.00	300,000.00
BRIDGE REPAIR								
TULSA SH-51: BRIDGE VEHICLE IMPACT DAMAGE REPAIRS								
SH-51 OVER S 145TH E. AVE, STRUCTURE 7280 1070 X, NBI 27147								
	SAP	-015N (035)	ES					
29822(04)	6	COBRGE	0.100	0.00	200,000.00	0.00	800,000.00	1,000,000.00
BRIDGE & APPROACHES								
WOODS BR & APP ON NS-250 OVER SAND CREEK, 5.0 MILES EAST AND 12.2 MILES SOUTH OF JCT US-64/US-281 CN 255 CT BEAMS								
	STP	-276D (057)	CI					
30492(08)	6	CO RD	4.710	0.00	100,000.00	0.00	1,900,000.00	2,000,000.00
GRADE & DRAIN								
WOODS GRADE, DRAIN, SURFACE ON NS-237, BEGIN 4.0 MI NORTH OF JCT US-81/US-64 EXTEND NORTH 1.0 MI TO EW-10, THEN FROM EW-7 EXTEND 1.0 MI NORTH TO EW-6								
	STP	-276C (063)	CI					
28460(04)	6	COBRGE	5.020	0.00	300,000.00	0.00	5,700,000.00	6,000,000.00
GRADE, DRAIN & SURFACE								
WOODWARD CO RD ON EW-51, BEGIN AT SH-34 AND EXTEND 5.0 MILES WEST TO NS-201								
	STP	-277C (053)	CI					
39 PROJECTS			GRAND-TOTALS	0.00	32,457,537.34	34,650,571.64	27,030,233.00	94,138,341.98

OTHER FUNDING CATEGORIES:

(A) CO. IMPROVE. ROAD & BRIDGE

PREPARED BY PROGRAMS DIVISION

JobPiece	CD	Highway	MILES	Adv Con	Federal	State	Other	Total
35811 (04)	8	OTA	0.000	0.00	0.00	9,500,000.00	0.00	9,500,000.00
		MONEY ONLY						
DELAWARE		CHEROKEE TURNPIKE: MAYES AND DELAWARE COUNTIES POSITIVE BARRIER MP 0-32						
		OTA PROJECT CHT-MC-11						
35834 (05)	2	OTA	0.000	0.00	0.00	7,963,144.27	0.00	7,963,144.27
		MONEY ONLY						
PUSHMATAHA		INDIAN NATION TURNPIKE: PUSHMATAHA COUNTY PAVEMENT REHABILITATION MP 20-30						
		OTA PROJECT IN-MC-70 (B)						
2 PROJECTS			GRAND-TOTALS	0.00	0.00	17,463,144.27	0.00	17,463,144.27

OTHER FUNDING CATEGORIES:

PREPARED BY PROGRAMS DIVISION

JobPiece	CD	Highway	MILES	Adv Con	Federal	State	Other	Total
35686(04)	8	OTA	0.000	0.00	0.00	40,091,696.97	0.00	40,091,696.97
		MONEY ONLY						
CREEK		WIDEN AND RESURFACE ON TURNER TURNPIKE, MILEPOST 197 TO MILEPOST 200						
		OTA PROJECT T-MC-107A-1						
35686(05)	8	OTA	0.000	0.00	0.00	34,316,117.26	0.00	34,316,117.26
		MONEY ONLY						
CREEK		WIDEN AND RESURFACE ON TURNER TURNPIKE, MILEPOST 200 TO MILEPOST 203						
		OTA PROJECT T-MC-107A-2						
35686(06)	8	OTA	0.000	0.00	0.00	5,790,080.71	0.00	5,790,080.71
		MONEY ONLY						
CREEK		GRADE, DRAIN AND SURFACE FOR RAMPS ON TURNER TURNPIKE AT SH-66 INTERCHANGE						
		OTA PROJECT T-MC-107B-3						
36429(04)	8	IS044	5.000	0.00	0.00	3,000,000.00	0.00	3,000,000.00
		MONEY ONLY						
OTTAWA		I-44/ WILL ROGERS TURNPIKE: PAVEMENT REHAB						
		OTA PROJECT WR-MC-143						
4 PROJECTS		GRAND-TOTALS		0.00	0.00	83,197,894.94	0.00	83,197,894.94

OTHER FUNDING CATEGORIES:

PREPARED BY PROGRAMS DIVISION

**FOR PRESENTATION AT THE COMMISSION MEETING ON JANUARY 9, 2023**

**Agenda Item No. 9**

**Subject: FY 2023 Budget Revisions**

**a) Request to increase the Highway Program using carry over funds:**

1. Federal funds

a) Highway Construction	\$ 203,579,682
b) City Projects	24,400,054
c) Right of Way	34,604,830
d) CRRSAA City Projects	<u>15,813,461</u>
Total	\$ 278,398,027

2. State funds

a) Engineering Contracts	\$ 16,841,468
b) Highway Construction	91,873,639
c) Right of Way	<u>10,954,092</u>
Total	\$ 119,669,199

**b) Request to increase the Highway Maintenance Program using state carryover funds.**

1. Asset Preservation	\$ 12,834,009
2. Building Replacement Program	1,616,970
3. Field Building Maintenance	<u>7,884,965</u>
Total	\$ 22,335,944

**c) Request to increase the Right of Way Program by \$90,000,000 re-budgeting prior year reserves for existing Right of Way / Utilities projects.**

**d) Request to increase the Lake and Industrial Access Program by \$8,258,000 utilizing state carryover funds.**

**e) Request to increase the Material Certification Program by \$145,648 utilizing state carryover funds.**

**f) Request to increase the County Program fund using carry over funds:**

1. Federal Aid	\$ 6,322,231
2. CIRB Program	<u>6,957,063</u>
Total	\$13,279,294

**g) Request to increase the Transit Program by \$1,651,158 utilizing federal CARES Act carryover funds.**

**h) Request to increase the Rail Program by \$4,975,382 utilizing federal carryover funds.**

**The Department requests and recommends approval of this item.**