



Program Provided by:
 Traffic Engineering Division
 Collision Analysis and Safety Branch
 (405) 522-0985
 Created: 12/18/2024
 by Stephen Waldrop

Study Map & Totals

Legend

- ▲ Fatality
- Injury
- Property Damage



Remarks:

NONE

2 NONMAPPABLE COLLISIONS **

Date Range: 01-01-2017 thru 12-18-2024

	2017						2018						2019					
	Fat	SRS Inj	Non-Incap Inj	Poss Inj	PD	Tot	Fat	SRS Inj	Non-Incap Inj	Poss Inj	PD	Tot	Fat	SRS Inj	Non-Incap Inj	Poss Inj	PD	Tot
Collisions		4	21	33	109	167		7	12	23	95	137		8	10	29	118	165
Persons		5	24	60		89		8	21	40		69		10	20	44		74



STUDY TOTALS (CONT.)

Date Range: 01-01-2017 Thru 12-18-2024

Program Provided by:
 Traffic Engineering Division
 Collision Analysis and Safety Branch
 (405) 522-0985
 Created: 12/18/2024 by Stephen Waldrop

	2020						2021*						2022*					
	Fat	SRS Inj	Non-Incap Inj	Poss Inj	PD	Tot	Fat	SRS Inj	Non-Incap Inj	Poss Inj	PD	Tot	Fat	SRS Inj	Non-Incap Inj	Poss Inj	PD	Tot
Collisions		2	26	19	87	134		2	13	21	67	103		2	15	21	3	41
Persons		2	35	40		77		2	18	34		54		2	21	38		61

* DENOTES A YEAR FOR WHICH DATA MAY BE INCOMPLETE.

	2023*						2024*					
	Fat	SRS Inj	Non-Incap Inj	Poss Inj	PD	Tot	Fat	SRS Inj	Non-Incap Inj	Poss Inj	PD	Tot
Collisions	1	4	9	18	9	41				1	2	3
Persons	1	7	14	36		58				1		1

* DENOTES A YEAR FOR WHICH DATA MAY BE INCOMPLETE.

	Study Total					
	Fatality	Suspected Serious Injury	Non-Incapacitating Injury	Possible Injury	Property Damage	Total
Collisions	1	29	106	165	490	791
Persons	1	36	153	293		483

** NONMAPPABLE COLLISIONS ARE NOT PLOTTED ON THE MAP DUE TO INSUFFICIENT LOCATION INFORMATION.



STUDY TOTALS - BY CITY AND HWY CLASS

Date Range: 01-01-2017 Thru 12-18-2024

Program Provided by:
 Traffic Engineering Division
 Collision Analysis and Safety Branch
 (405) 522-0985
 Created: 12/18/2024 by Stephen Waldrop

STUDY TOTALS

Year	HIGHWAY COLLISIONS				CITY STREET COLLISIONS				COUNTY ROAD COLLISIONS				TOTAL COLLISIONS			
	Fat	Inj*	PD	Tot	Fat	Inj*	PD	Tot	Fat	Inj*	PD	Tot	Fat	Inj*	PD	Tot
2017		58	109	167									58	109	167	
2018		42	95	137									42	95	137	
2019		47	118	165									47	118	165	
2020		47	87	134									47	87	134	
2021*		36	67	103									36	67	103	
2022*		38	3	41									38	3	41	
2023*	1	31	9	41									1	31	9	41
2024*		1	2	3										1	2	3
Total:	1	300	490	791				0				0	1	300	490	791

* DENOTES A YEAR FOR WHICH DATA MAY BE INCOMPLETE.

County: (51) MUSKOGEE

	HIGHWAY COLLISIONS				CITY STREET COLLISIONS				COUNTY ROAD COLLISIONS				TOTAL COLLISIONS			
	Fat	Inj*	PD	Tot	Fat	Inj*	PD	Tot	Fat	Inj*	PD	Tot	Fat	Inj*	PD	Tot
(30) MUSKOGEE	1	300	490	791									1	300	490	791

* INCLUDES SUSPECTED SERIOUS, NON-INCAPACITATING, AND POSSIBLE INJURIES.



TABULATION OF COLLISIONS

Date Range: 01-01-2017 Thru 12-18-2024

Program Provided by:
 Traffic Engineering Division
 Collision Analysis and Safety Branch
 (405) 522-0985
 Created: 12/18/2024 by Stephen Waldrop

Collisions By Type Of Collision

Type Of Collision	2017				2018				2019				2020				2021*			
	Fat	Inj *	PD	Tot	Fat	Inj *	PD	Tot	Fat	Inj *	PD	Tot	Fat	Inj *	PD	Tot	Fat	Inj *	PD	Tot
Rear-End (front-to-rear)		27	56	83		22	50	72		14	62	76		24	47	71		15	28	43
Head-On (front-to-front)																				
Right Angle (front-to-side)		12	11	23		12	12	24		15	11	26		8	5	13		11	8	19
Angle Turning		10	21	31		4	18	22		10	20	30		7	21	28		2	15	17
Other Angle			1	1																
Sideswipe Same Direction		2	3	5		1	8	9		2	12	14		3	8	11		2	9	11
Sideswipe Opposite Direction											1	1							2	2
Fixed Object		1	7	8		1	2	3		4	2	6		2	2	4		1	2	3
Pedestrian														1		1				
Pedal Cycle		2		2										1		1				
Animal			1	1			2	2			1	1								
Overturn/Rollover		2		2														1		1
Vehicle-Train																				
Other Single Vehicle Crash		1	1	2			1	1			1	1								
Other		1	8	9		2	2	4		2	8	10		1	4	5		4	3	7
Total		58	109	167		42	95	137		47	118	165		47	87	134		36	67	103
Percent		7.3	13.8	21.1		5.3	12.0	17.3		5.9	14.9	20.9		5.9	11.0	16.9		4.6	8.5	13.0

Collisions By Type Of Collision

Type Of Collision	2022*				2023*				2024*				Total				
	Fat	Inj *	PD	Tot	Fat	Inj *	PD	Tot	Fat	Inj *	PD	Tot	Fat	Inj *	PD	Tot	Pct
Rear-End (front-to-rear)		13	3	16		13	4	17		1		1		129	250	379	47.9
Head-On (front-to-front)																	
Right Angle (front-to-side)		8		8		6		6						72	47	119	15.0
Angle Turning		6		6		5	3	8			1	1		44	99	143	18.1
Other Angle															1	1	0.1
Sideswipe Same Direction														10	40	50	6.3
Sideswipe Opposite Direction		1		1										1	3	4	0.5
Fixed Object														9	15	24	3.0
Pedestrian		1		1							1	1		2	1	3	0.4
Pedal Cycle														3		3	0.4
Animal															4	4	0.5
Overturn/Rollover														3		3	0.4
Vehicle-Train																	
Other Single Vehicle Crash		2		2	1			1					1	3	3	7	0.9
Other		7		7		7	2	9						24	27	51	6.4
Total		38	3	41	1	31	9	41		1	2	3	1	300	490	791	100
Percent		4.8	0.4	5.2	0.1	3.9	1.1	5.2		0.1	0.3	0.4	0.1	37.9	61.9	100	

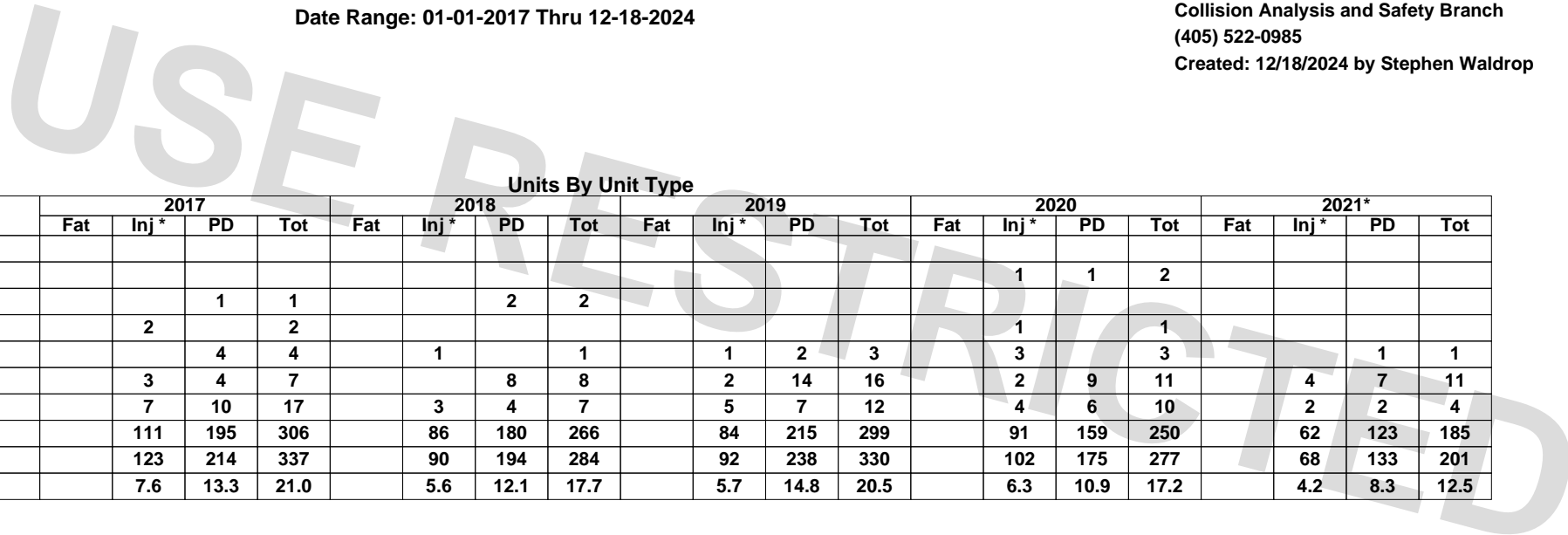
* INCLUDES SUSPECTED SERIOUS, NON-INCAPACITATING, AND POSSIBLE INJURIES.



TABULATION OF COLLISIONS

Date Range: 01-01-2017 Thru 12-18-2024

Program Provided by:
 Traffic Engineering Division
 Collision Analysis and Safety Branch
 (405) 522-0985
 Created: 12/18/2024 by Stephen Waldrop



Units By Unit Type

Unit Type	2017				2018				2019				2020				2021*				
	Fat	Inj *	PD	Tot	Fat	Inj *	PD	Tot	Fat	Inj *	PD	Tot	Fat	Inj *	PD	Tot	Fat	Inj *	PD	Tot	
Train																					
Pedestrian														1	1	2					
Animal			1	1			2	2													
Pedal Cycle		2		2										1		1					
Parked Vehicle			4	4		1		1		1	2	3		3		3			1	1	
CMV		3	4	7			8	8		2	14	16		2	9	11			4	7	11
Other Single Vehicle		7	10	17		3	4	7		5	7	12		4	6	10			2	2	4
Other Multi-Vehicle		111	195	306		86	180	266		84	215	299		91	159	250			62	123	185
Total		123	214	337		90	194	284		92	238	330		102	175	277			68	133	201
Percent		7.6	13.3	21.0		5.6	12.1	17.7		5.7	14.8	20.5		6.3	10.9	17.2			4.2	8.3	12.5

Units By Unit Type

Unit Type	2022*				2023*				2024*				Total				
	Fat	Inj *	PD	Tot	Fat	Inj *	PD	Tot	Fat	Inj *	PD	Tot	Fat	Inj *	PD	Tot	Pct
Train																	
Pedestrian		1		1	1			1			1	1	1	2	2	5	0.3
Animal															3	3	0.2
Pedal Cycle						1		1						4		4	0.2
Parked Vehicle														5	7	12	0.7
CMV			2	2		2	5	7						13	49	62	3.9
Other Single Vehicle		3		3	1			1		1	1	1	1	24	30	55	3.4
Other Multi-Vehicle		75	4	79		65	13	78		2	2	4		576	891	1467	91.2
Total		79	6	85	2	68	18	88		2	4	6	2	624	982	1608	100
Percent		4.9	0.4	5.3	0.1	4.2	1.1	5.5		0.1	0.2	0.4	0.1	38.8	61.1	100	

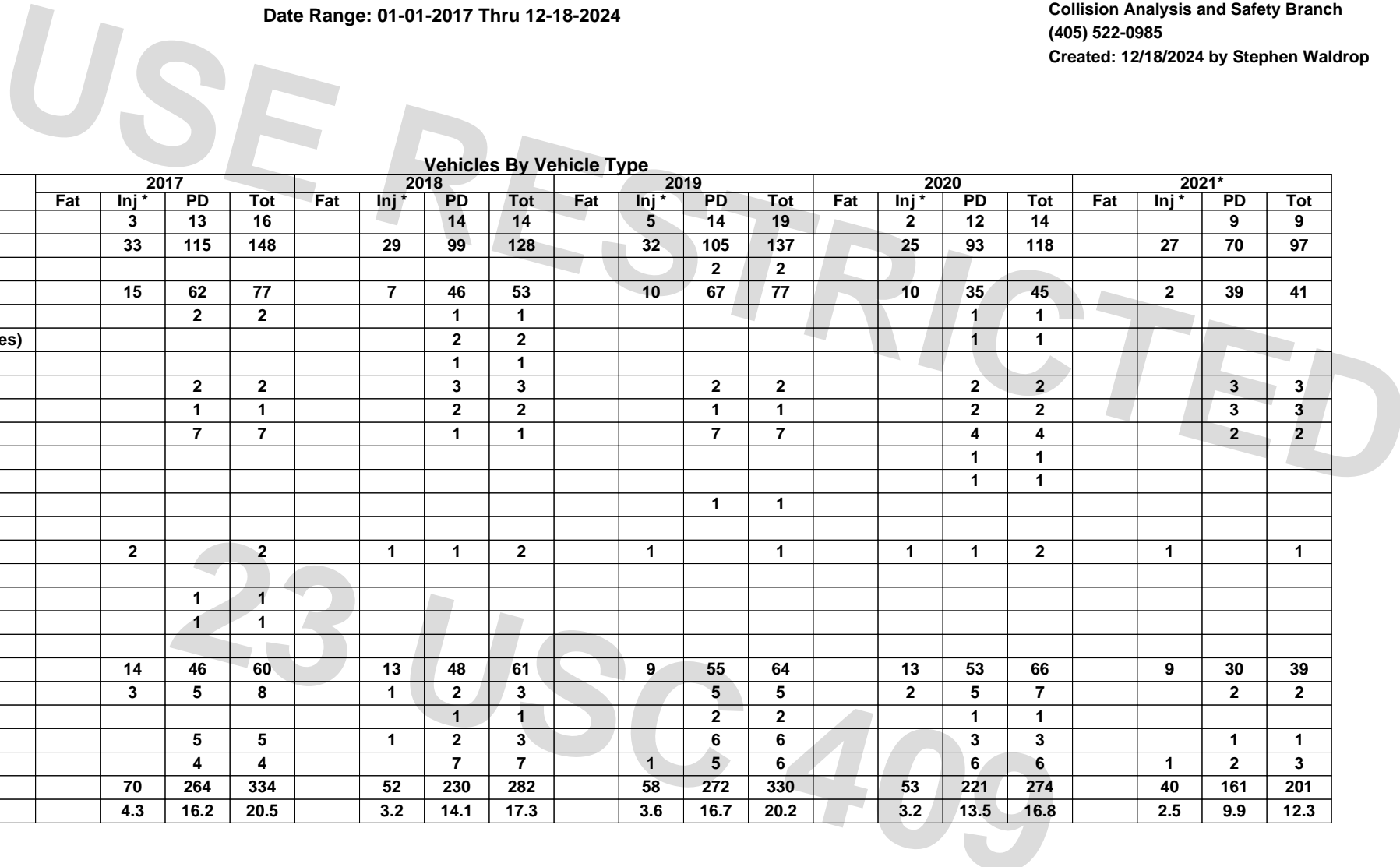
* INCLUDES SUSPECTED SERIOUS, NON-INCAPACITATING, AND POSSIBLE INJURIES.



TABULATION OF COLLISIONS

Date Range: 01-01-2017 Thru 12-18-2024

Program Provided by:
 Traffic Engineering Division
 Collision Analysis and Safety Branch
 (405) 522-0985
 Created: 12/18/2024 by Stephen Waldrop



Vehicles By Vehicle Type

Vehicle Type	2017				2018				2019				2020				2021*			
	Fat	Inj *	PD	Tot	Fat	Inj *	PD	Tot	Fat	Inj *	PD	Tot	Fat	Inj *	PD	Tot	Fat	Inj *	PD	Tot
Passenger Vehicle-2 Door		3	13	16			14	14	5	14	19		2	12	14				9	9
Passenger Vehicle-4 Door		33	115	148		29	99	128	32	105	137		25	93	118		27	70	97	
Passenger Vehicle-Convertible										2	2									
Pickup Truck		15	62	77		7	46	53	10	67	77		10	35	45		2	39	41	
Single-Unit Truck (2 axles)			2	2			1	1						1	1					
Single-Unit Truck (3 or more axles)							2	2						1	1					
School Bus							1	1												
Truck/Trailer			2	2			3	3		2	2			2	2			3	3	
Truck-Tractor (bobtail)			1	1			2	2		1	1			2	2			3	3	
Truck-Tractor/Semi-Trailer			7	7			1	1		7	7			4	4			2	2	
Truck-Tractor/Double														1	1					
Truck-Tractor/Triple														1	1					
Bus/Large Van (9-15 seats)										1	1									
Bus (16+ seats)																				
Motorcycle		2		2		1	1	2		1	1			1	1	2		1		1
Motor Scooter/Moped																				
Motor Home			1	1																
Farm Machinery			1	1																
ATV																				
Sport Utility Vehicle (SUV)		14	46	60		13	48	61		9	55	64		13	53	66		9	30	39
Passenger Van		3	5	8		1	2	3		5	5			2	5	7			2	2
Truck More Than 10,000 lbs.							1	1		2	2			1	1					
Van (10,000 lbs. or less)			5	5		1	2	3		6	6			3	3				1	1
Other			4	4			7	7		1	5	6		6	6			1	2	3
Total		70	264	334		52	230	282		58	272	330		53	221	274		40	161	201
Percent		4.3	16.2	20.5		3.2	14.1	17.3		3.6	16.7	20.2		3.2	13.5	16.8		2.5	9.9	12.3

* INCLUDES SUSPECTED SERIOUS, NON-INCAPACITATING, AND POSSIBLE INJURIES.



TABULATION OF COLLISIONS

Date Range: 01-01-2017 Thru 12-18-2024

Program Provided by:
 Traffic Engineering Division
 Collision Analysis and Safety Branch
 (405) 522-0985
 Created: 12/18/2024 by Stephen Waldrop

Vehicles By Vehicle Type

Vehicle Type	2022*				2023*				2024*				Total				
	Fat	Inj *	PD	Tot	Fat	Inj *	PD	Tot	Fat	Inj *	PD	Tot	Fat	Inj *	PD	Tot	Pct
Passenger Vehicle-2 Door		1	4	5		3	4	7					14	70	84	5.1	
Passenger Vehicle-4 Door		14	14	28		22	13	35	1	2	3		183	511	694	42.5	
Passenger Vehicle-Convertible		1		1									1	2	3	0.2	
Pickup Truck		14	13	27		8	14	22			1	1	66	277	343	21.0	
Single-Unit Truck (2 axles)		1	1	2			3	3					1	8	9	0.6	
Single-Unit Truck (3 or more axles)			2	2			3	3					8	8	0.5		
School Bus							1	1					2	2	0.1		
Truck/Trailer			1	1			2	2					15	15	0.9		
Truck-Tractor (bobtail)													9	9	0.6		
Truck-Tractor/Semi-Trailer			1	1			3	3					25	25	1.5		
Truck-Tractor/Double													1	1	0.1		
Truck-Tractor/Triple													1	1	0.1		
Bus/Large Van (9-15 seats)													1	1	0.1		
Bus (16+ seats)			2	2									2	2	0.1		
Motorcycle		1		1		1		1					8	2	10	0.6	
Motor Scooter/Moped																	
Motor Home														1	1	0.1	
Farm Machinery														1	1	0.1	
ATV																	
Sport Utility Vehicle (SUV)		13	14	27		11	11	22		1	1		82	258	340	20.8	
Passenger Van		1	1	2									7	20	27	1.7	
Truck More Than 10,000 lbs.							1	1					5	5	0.3		
Van (10,000 lbs. or less)			2	2			1	1					1	20	21	1.3	
Other			2	2			2	2					2	28	30	1.8	
Total		46	57	103		45	58	103		1	4	5	365	1267	1632	100	
Percent		2.8	3.5	6.3		2.8	3.6	6.3		0.1	0.2	0.3	22.4	77.6	100		

* INCLUDES SUSPECTED SERIOUS, NON-INCAPACITATING, AND POSSIBLE INJURIES.



TABULATION OF COLLISIONS

Date Range: 01-01-2017 Thru 12-18-2024

Program Provided by:
 Traffic Engineering Division
 Collision Analysis and Safety Branch
 (405) 522-0985
 Created: 12/18/2024 by Stephen Waldrop

USE RESTRICTED 409

Day And Time Of Occurrence Of Collisions

Day	Hour Of The Day																								Tot	Pcnt						
	AM												PM																			
	1	2	3	4	5	6	7	8	9	10	11	12	1	2	3	4	5	6	7	8	9	10	11	12								
Sunday	1				1	2			1	2	6	8	7	3	4	3	5	6	1	4	3		1	1	54	6.7						
Monday					1	1	2	4	7	6	13	20	14	7	10	12	12	5	2	4	2	1			123	15.2						
Tuesday	2	1		1			5	8	6	8	13	12	10	5	17	8	10	12	5	3	4	3		133	16.4							
Wednesday							5	8	10	3	5	16	12	11	10	18	11	4	6	2	3	3		127	15.7							
Thursday		1				1	5	4	10	4	6	12	13	11	18	16	12	6	8	1	4	1	1	1	135	16.7						
Friday	1				2		2	7	6	7	10	20	11	8	24	19	15	10	2	3	9	3		159	19.6							
Saturday	1					2	1	1	5	6	7	5	9	5	4	5	5	5	4	1	5	5	1	2	79	9.8						
	Early Morning - Sunrise						Morning Peak						Mid Morning/Afternoon						PM Peak						Evening - Late Night						Tot	Pcnt
Total	18						97						402						194						99						810	810
Percent	2.2						12.0						49.6						24.0						12.2						100	100

Roadway/Lighting

Roadway Conditions	Lighting Conditions					Total	Percent
	Daylight	Darkness	Twilight	Lighted	Unknown		
Dry	569	13	12	91	2	687	84.8
Wet (Water)	76	5	1	20	1	103	12.7
Ice, Snow, or Slush	11	1	1	3		16	2.0
Mud, Dirt, Gravel, or Sand							
Other	2				2	4	0.5
Total	658	19	14	114	5	810	100
Percent	81.2	2.3	1.7	14.1	0.6	100	

Weather Conditions

Weather Conditions	Total	Percent
Clear	589	72.7
Clouds Present	125	15.4
Raining/Fog	75	9.3
Snowing/Sleet/Hail	15	1.9
Other	6	0.7
Total	810	100



TABULATION OF COLLISIONS

Date Range: 01-01-2017 Thru 12-18-2024

Program Provided by:
 Traffic Engineering Division
 Collision Analysis and Safety Branch
 (405) 522-0985
 Created: 12/18/2024 by Stephen Waldrop

Drivers By Driver Conditions

Unsafe/Unlawful	Apparently Normal			Alcohol Involved						Sleep Suspected			Drug Use Indicated			Unknown Condition			Total					
				Ability Impaired			Odor Detected												Total					
	Fat	Inj *	PD	Fat	Inj *	PD	Fat	Inj *	PD	Fat	Inj *	PD	Fat	Inj *	PD	Fat	Inj *	PD	Fat	Inj *	PD	Total	Pcnt	
Failed to Yield		77	87		1										5	5			83	92	175	11.1		
Failed to Stop		32	18		1								1		2	2			36	20	56	3.5		
Failed to Signal																								
Improper Turn		6	29													3			6	32	38	2.4		
Improper Start		3	3																3	3	6	0.4		
Improper Stop																								
Improper Backing			15																	15	15	0.9		
Improper Parking																								
Improper Passing		2	8													3			2	11	13	0.8		
Improper Lane Change		3	23												2	2			5	25	30	1.9		
Left of Center		1	3							1									2	3	5	0.3		
Following Too Close		92	160								1			1	2	8			94	170	264	16.7		
Unsafe Speed		9	8												3	2			12	10	22	1.4		
DWI			1		5	3		2	2					4					7	10	17	1.1		
Inattention	2	18	42							1	1				2	3	2		21	46	69	4.4		
Negligent Driving			7													2				9	9	0.6		
Defective Vehicle		3	3												1				4	3	7	0.4		
Wrong Way		1																	1		1	0.1		
No Improper Action		298	468					1					1	1	10	6			310	475	785	49.7		
Other		17	35												8	9			25	44	69	4.4		
Total	2	562	910		7	3		3	2		2	2		2	6			35	45	2	611	968	1581	100
Percent	0.1	35.5	57.6		0.4	0.2		0.2	0.1		0.1	0.1		0.1	0.4			2.2	2.8	0.1	38.6	61.2	100	

Severities Indicate Highest Severity in Collision

Collisions By Special Feature

Special Feature	Total			
	Fat	Inj *	PD	Tot
Bridge		1	5	6
Work Zone			8	8
Cross Median		1	1	2
Train Collision				

* INCLUDES SUSPECTED SERIOUS, NON-INCAPACITATING, AND POSSIBLE INJURIES.



HIGHWAY SYSTEM COLLISION LISTING

Date Range: 01-01-2017 Thru 12-18-2024

Program Provided by:
 Traffic Engineering Division
 Collision Analysis and Safety Branch
 (405) 522-0985
 Created: 12/18/2024 by Stephen Waldrop

Cnty	City	CS #	Int. #	Mile Post	Location	Features	Int. Related	On Map	Dir. 1	Dir. 2	# Veh.	# Inj.*	# Fat.	Type of Collision	Unsafe Unlawful	Lighting Cond.	Roadway Cond.	Severity	Date	
(51)	MUSKOGEE	(30)	MUSKOGEE		HWY: , 32 ST.				AT: US-62,					SHAWNEE BYPASS						
51	30	18	04	01.00	SHAWNEE BYPASS		YES	Y	E	E	2			SIDESWIPE-SAME	IMP-LN-CHG	DYLGT	DRY	PDO	01-17-2017	
51	30	18	04	01.00	SHAWNEE BYPASS		YES	Y	S	S	2			ANGLE-TURNING	OTHER	DYLGT	DRY	PDO	05-23-2017	
51	30	18	04	01.00	SHAWNEE BYPASS		YES	Y	S	S	2			REAR-END	FOL-CLOSE	DYLGT	DRY	PDO	08-04-2017	
51	30	18	04	01.00	SHAWNEE BYPASS		YES	Y	W	W	3			REAR-END	FOL-CLOSE	DARK	DRY	PDO	09-20-2017	
51	30	18	04	01.00	SHAWNEE BYPASS		YES	Y	S	S	2			REAR-END	OTHER	DYLGT	WET	PDO	10-04-2017	
51	30	18	04	01.00	SHAWNEE BYPASS		YES	Y	S	S	2			REAR-END	F-YIELD	DARK	WET	PDO	10-04-2017	
51	30	18	04	01.00	SHAWNEE BYPASS		YES	Y	S	S	2			REAR-END	INATT	DYLGT	DRY	PDO	04-08-2018	
51	30	18	04	01.00	SHAWNEE BYPASS		YES	Y	N	N	2			REAR-END	FOL-CLOSE	DYLGT	DRY	PDO	04-29-2018	
51	30	18	04	01.00	SHAWNEE BYPASS		YES	Y	E	E	2			ANGLE-TURNING	IMP-LN-CHG	DYLGT	DRY	PDO	05-29-2018	
51	30	18	04	01.00	SHAWNEE BYPASS	TURN LN MRGE	YES	Y	N	N	2	1		REAR-END	FOL-CLOSE	DYLGT	DRY	P INJ	07-06-2018	
51	30	18	04	01.00	SHAWNEE BYPASS		YES	Y	E	E	2			ANGLE-TURNING	IMP-TURN	DYLGT	DRY	PDO	07-09-2018	
51	30	18	04	01.00	SHAWNEE BYPASS		YES	Y	N	N	2			SIDESWIPE-SAME	IMP-LN-CHG	DYLGT	DRY	PDO	07-12-2018	
51	30	18	04	01.00	SHAWNEE BYPASS		YES	Y	W	W	2			ANGLE-TURNING	IMP-TURN	DYLGT	DRY	PDO	08-20-2018	
51	30	18	04	01.00	SHAWNEE BYPASS		YES	Y	N	N	2			REAR-END	IMP-PASS	DYLGT	DRY	PDO	09-12-2018	
51	30	18	04	01.00	SHAWNEE BYPASS		YES	Y	W	-	1			F-O UTIL-POLE	NO-IMP-ACT	DYLGT	WET	PDO	10-19-2018	
51	30	18	04	01.00	SHAWNEE BYPASS		YES	Y	N	N	2			REAR-END	FOL-CLOSE	DYLGT	DRY	PDO	11-29-2018	
51	30	18	04	01.00	SHAWNEE BYPASS		YES	Y	E	S	2	1		RIGHT-ANGLE	F-STOP	DARK	WET	N-I INJ	01-16-2019	
51	30	18	04	01.00	SHAWNEE BYPASS		YES	Y	N	N	2			REAR-END	FOL-CLOSE	DARK	WET	PDO	02-17-2019	
51	30	18	04	01.00	SHAWNEE BYPASS		YES	Y	W	W	2			REAR-END	FOL-CLOSE	DARK	DRY	PDO	02-25-2019	
51	30	18	04	01.00	SHAWNEE BYPASS		YES	Y	N	N	2			REAR-END	FOL-CLOSE	DYLGT	DRY	PDO	03-01-2019	
51	30	18	04	01.00	SHAWNEE BYPASS		YES	Y	N	S	2			SIDESWIPE-OPP	DEF-VEH	DYLGT	DRY	PDO	03-27-2019	
51	30	18	04	01.00	SHAWNEE BYPASS		YES	Y	N	N	2			REAR-END	INATT	DYLGT	DRY	PDO	04-26-2019	
51	30	18	04	01.00	SHAWNEE BYPASS		YES	Y	E	E	2	2		REAR-END	F-STOP	DARK	DRY	P INJ	06-20-2019	
51	30	18	04	01.00	SHAWNEE BYPASS		YES	Y	E	E	2			REAR-END	INATT	DYLGT	DRY	PDO	06-20-2019	
51	30	18	04	01.00	SHAWNEE BYPASS		YES	Y	W	-	1	1		F-O CURB	NO-IMP-ACT	DYLGT	DRY	P INJ	06-27-2019	
51	30	18	04	01.00	SHAWNEE BYPASS		YES	Y	W	W	2			REAR-END	INATT	DYLGT	DRY	PDO	08-13-2019	
51	30	18	04	01.00	SHAWNEE BYPASS		YES	Y	N	N	2			REAR-END	FOL-CLOSE	DYLGT	DRY	PDO	09-03-2019	
51	30	18	04	01.00	SHAWNEE BYPASS		YES	Y	N	N	2			REAR-END	INATT	DYLGT	DRY	PDO	10-08-2019	
51	30	18	04	01.00	SHAWNEE BYPASS		YES	Y	E	E	2			OTH-BACKING	IMP-BACK	DYLGT	WET	PDO	10-24-2019	
51	30	18	04	01.00	SHAWNEE BYPASS	TURN LN MRGE	YES	Y	E	E	2			REAR-END	FOL-CLOSE	DYLGT	DRY	PDO	11-06-2019	
51	30	18	04	01.00	SHAWNEE BYPASS	WKZONE	YES	Y	N	N	2			SIDESWIPE-SAME	IMP-LN-CHG	DYLGT	DRY	PDO	11-20-2019	
51	30	18	04	01.00	SHAWNEE BYPASS		YES	Y	W	W	2			ANGLE-TURNING	F-YIELD	DUSK	DRY	PDO	11-29-2019	
51	30	18	04	01.00	SHAWNEE BYPASS		YES	Y	N	N	2			REAR-END	OTHER	Other	OTHER	PDO	02-28-2020	
51	30	18	04	01.00	SHAWNEE BYPASS		YES	Y	W	N	2			ANGLE-TURNING	F-YIELD	DARK	WET	PDO	04-04-2020	
51	30	18	04	01.00	SHAWNEE BYPASS		YES	Y	N	N	2			SIDESWIPE-SAME	OTHER	DARK	DRY	PDO	06-02-2020	
51	30	18	04	01.00	SHAWNEE BYPASS		YES	Y	E	E	2			REAR-END	IMP-BACK	DYLGT	DRY	PDO	06-30-2020	
51	30	18	04	01.00	SHAWNEE BYPASS		YES	Y	S	S	2			ANGLE-TURNING	IMP-TURN	DYLGT	DRY	PDO	07-02-2020	
51	30	18	04	01.00	SHAWNEE BYPASS		YES	Y	N	N	2			REAR-END	OTHER	DYLGT	DRY	PDO	08-21-2020	

* INCLUDES SUSPECTED SERIOUS, NON-INCAPACITATING, AND POSSIBLE INJURIES.



HIGHWAY SYSTEM COLLISION LISTING

Date Range: 01-01-2017 Thru 12-18-2024

Program Provided by:
 Traffic Engineering Division
 Collision Analysis and Safety Branch
 (405) 522-0985
 Created: 12/18/2024 by Stephen Waldrop

USE

Cnty	City	HIGHWAY COLLISIONS			Mile Post	Location	Features	CITY STREET COLLISIONS				COUNTY ROAD COLLISIONS				TOTAL COLLISIONS				
		CS #	Int. #					Int. Related	On Map	Dir. 1	Dir. 2	# Veh.	# Inj.*	# Fat.	Type of Collision	Unsafe Unlawful	Lighting Cond.	Roadway Cond.	Severity	Date
51	30	18	04	01.00	SHAWNEE BYPASS		YES	Y	N	W	3	2		RIGHT-ANGLE	F-STOP	DYLGT	DRY	P INJ	09-15-2020	
51	30	18	04	01.00	SHAWNEE BYPASS		YES	Y	N	N	2			SIDESWIPE-SAME	IMP-LN-CHG	DARK	DRY	PDO	11-26-2020	
51	30	18	04	01.00	SHAWNEE BYPASS		YES	Y	S	S	3	3		REAR-END	DEF-VEH	DYLGT	DRY	N-I INJ	12-04-2020	
51	30	18	04	01.00	SHAWNEE BYPASS		YES	Y	E	E	2			REAR-END	FOL-CLOSE	DYLGT	DRY	PDO	12-12-2020	
51	30	18	04	01.00	SHAWNEE BYPASS		YES	Y	W	W	2			REAR-END	INATT	DYLGT	WET	PDO	12-14-2020	
51	30	18	04	01.00	SHAWNEE BYPASS		YES	Y	S	E	2	1		RIGHT-ANGLE	F-STOP	DYLGT	DRY	SS INJ	03-28-2021	
51	30	18	04	01.00	SHAWNEE BYPASS		YES	Y	S	S	2			REAR-END	FOL-CLOSE	DYLGT	WET	PDO	05-04-2021	
51	30	18	04	01.00	SHAWNEE BYPASS		YES	Y	S	S	3			REAR-END	FOL-CLOSE	DYLGT	DRY	PDO	08-09-2021	
51	30	18	04	01.00	SHAWNEE BYPASS		YES	Y	N	N	2			REAR-END	FOL-CLOSE	DYLGT	DRY	PDO	11-18-2021	
51	30	18	04	01.00	SHAWNEE BYPASS		YES	Y	N	N	2			OTHER	OTHER	DYLGT	DRY	PDO	04-04-2023	
51	30	18	04	01.00	SHAWNEE BYPASS		YES	Y	N	N	2	1		REAR-END	F-YIELD	DARK	DRY	P INJ	01-11-2024	
51	30	18	04	01.00	SHAWNEE BYPASS		YES	Y	E	-	1			PEDESTRIAN	NO-IMP-ACT	DYLGT	DRY	PDO	01-21-2024	

(51) MUSKOGEE		(30) MUSKOGEE		HWY: US-62,		SHAWNEE BYPASS		AT: US-69,		32 ST.									
51	30	47	04	00.00	32 ST.		YES	Y	E	E	2			REAR-END	FOL-CLOSE	DARK	WET	PDO	01-22-2017
51	30	47	04	00.00	32 ST.		YES	Y	N	N	2	1		REAR-END	FOL-CLOSE	DYLGT	DRY	P INJ	05-17-2017
51	30	47	04	00.00	32 ST.		YES	Y	W	W	2			REAR-END	FOL-CLOSE	DYLGT	DRY	PDO	05-25-2017
51	30	47	04	00.00	32 ST.		YES	Y	S	S	2	1		REAR-END	F-STOP	DYLGT	DRY	N-I INJ	06-20-2017
51	30	47	04	00.00	32 ST.		YES	Y	E	W	2			REAR-END	INATT	DYLGT	DRY	PDO	07-25-2017
51	30	47	04	00.00	32 ST.		YES	Y	N	N	2			REAR-END	IMP-START	DYLGT	DRY	PDO	07-25-2017
51	30	47	04	00.00	32 ST.		YES	Y	W	W	2			REAR-END	FOL-CLOSE	DYLGT	DRY	PDO	11-27-2017
51	30	47	04	00.00	32 ST.		YES	Y	W	W	2			REAR-END	IMP-PASS	DYLGT	DRY	PDO	10-10-2018
51	30	47	04	00.00	32 ST.		YES	Y	W	W	2	1		REAR-END	FOL-CLOSE	DYLGT	DRY	P INJ	10-26-2018
51	30	47	04	00.00	32 ST.		YES	Y	S	E	3	5		ANGLE-TURNING	F-STOP	DYLGT	WET	SS INJ	01-02-2019
51	30	47	04	00.00	32 ST.		YES	Y	S	W	2	2		RIGHT-ANGLE	F-YIELD	DYLGT	WET	P INJ	01-11-2019
51	30	47	04	00.00	32 ST.		YES	Y	W	W	2			REAR-END	FOL-CLOSE	DYLGT	DRY	PDO	01-16-2019
51	30	47	04	00.00	32 ST.		YES	Y	W	W	2			REAR-END	FOL-CLOSE	DYLGT	DRY	PDO	06-04-2019
51	30	47	04	00.00	32 ST.		YES	Y	W	W	2			REAR-END	FOL-CLOSE	DYLGT	WET	PDO	08-30-2019
51	30	47	04	00.00	32 ST.		YES	Y	E	N	2	1		REAR-END	FOL-CLOSE	DYLGT	DRY	P INJ	08-30-2019
51	30	47	04	00.00	32 ST.		YES	Y	W	W	3			REAR-END	OTHER	DARK	DRY	PDO	11-12-2019
51	30	47	04	00.00	32 ST.		YES	Y	E	E	2	1		REAR-END	FOL-CLOSE	DYLGT	DRY	P INJ	01-22-2020
51	30	47	04	00.00	32 ST.		YES	Y	W	W	2	1		REAR-END	FOL-CLOSE	DYLGT	DRY	P INJ	05-13-2020
51	30	47	04	00.00	32 ST.		YES	Y	W	E	2	3		ANGLE-TURNING	F-YIELD	DYLGT	DRY	N-I INJ	06-09-2020
51	30	47	04	00.00	32 ST.		YES	Y	W	W	2			SIDESWIPE-SAME	IMP-LN-CHG	DYLGT	DRY	PDO	10-12-2020
51	30	47	04	00.00	32 ST.		YES	Y	S	E	2			OTHER	UNSAF-SPD	DYLGT	WET	PDO	01-07-2021
51	30	47	04	00.00	32 ST.		YES	Y	W	E	2			SIDESWIPE-OPP	L-CENTER	DYLGT	DRY	PDO	08-19-2021
51	30	47	04	00.00	32 ST.		YES	Y	S	S	2			ANGLE-TURNING	IMP-TURN	DYLGT	DRY	PDO	10-06-2022
51	30	47	04	00.00	32 ST.		YES	Y	W	W	2			SIDESWIPE-SAME	NO-IMP-ACT	DARK	ICE	PDO	01-31-2023

* INCLUDES SUSPECTED SERIOUS, NON-INCAPACITATING, AND POSSIBLE INJURIES.



HIGHWAY SYSTEM COLLISION LISTING

Date Range: 01-01-2017 Thru 12-18-2024

Program Provided by:
 Traffic Engineering Division
 Collision Analysis and Safety Branch
 (405) 522-0985
 Created: 12/18/2024 by Stephen Waldrop

USE

				HIGHWAY COLLISIONS			CITY STREET COLLISIONS			COUNTY ROAD COLLISIONS					TOTAL COLLISIONS					
Cnty	City	CS #	Int. #	Mile Post	Location	Features	Int. Related	On Map	Dir. 1	Dir. 2	# Veh.	# Inj.*	# Fat.	Type of Collision	Unsafe Unlawful	Lighting Cond.	Roadway Cond.	Severity	Date	
51	30	47	04	00.00	32 ST.		YES	Y	S	N	2	2		ANGLE-TURNING	F-YIELD	DARK	DRY	P INJ	06-09-2023	
(51) MUSKOGEE				(30) MUSKOGEE			HWY: US-62, SHAWNEE BYPASS													
51	30	47	04	00.04			NO	Y	W	W	2	1		REAR-END	FOL-CLOSE	DYLGT	DRY	N-I INJ	02-11-2020	
(51) MUSKOGEE				(30) MUSKOGEE			HWY: AT: YORK													
51	30	06	06	00.00	YORK		YES	Y	W	W	2			REAR-END	FOL-CLOSE	DYLGT	DRY	PDO	03-17-2017	
51	30	06	06	00.00	YORK		YES	Y	N	E	2			REAR-END	FOL-CLOSE	DYLGT	DRY	PDO	03-20-2017	
51	30	06	06	00.00	YORK	M/L RAMP MRG	YES	Y	W	W	2			REAR-END	FOL-CLOSE	DYLGT	DRY	PDO	03-30-2017	
51	30	06	06	00.00	YORK		YES	Y	N	N	2			REAR-END	FOL-CLOSE	DYLGT	DRY	PDO	07-02-2017	
51	30	06	06	00.00	YORK		YES	Y	W	S	4	2		ANGLE-TURNING	F-YIELD	DYLGT	DRY	SS INJ	07-25-2017	
51	30	06	06	00.00	YORK		YES	Y	E	E	2			REAR-END	FOL-CLOSE	DYLGT	DRY	PDO	08-10-2017	
51	30	06	06	00.00	YORK		YES	Y	W	W	3			REAR-END	FOL-CLOSE	DYLGT	DRY	PDO	08-18-2017	
51	30	06	06	00.00	YORK		YES	Y	N	N	2			ANGLE-TURNING	L-CENTER	DYLGT	DRY	PDO	09-20-2017	
51	30	06	06	00.00	YORK		YES	Y	S	S	2			ANGLE-TURNING	F-YIELD	DYLGT	DRY	PDO	11-05-2017	
51	30	06	06	00.00	YORK		YES	Y	E	-	1			F-O TRAFF-SIGN	L-CENTER	DARK	DRY	PDO	11-19-2017	
51	30	06	06	00.00	YORK		YES	Y	E	E	2			REAR-END	FOL-CLOSE	DUSK	DRY	PDO	11-20-2017	
51	30	06	06	00.00	YORK		YES	Y	N	N	2			ANGLE-TURNING	IMP-TURN	DYLGT	DRY	PDO	11-28-2017	
51	30	06	06	00.00	YORK		YES	Y	E	E	3	3		REAR-END	FOL-CLOSE	DYLGT	DRY	N-I INJ	02-01-2018	
51	30	06	06	00.00	YORK	TURN LN MRGE	YES	Y	W	W	2			REAR-END	FOL-CLOSE	DYLGT	DRY	PDO	07-27-2018	
51	30	06	06	00.00	YORK		YES	Y	E	E	2			REAR-END	FOL-CLOSE	DYLGT	DRY	PDO	07-29-2018	
51	30	06	06	00.00	YORK		YES	Y	E	E	2	1		REAR-END	FOL-CLOSE	DYLGT	DRY	P INJ	10-01-2018	
51	30	06	06	00.00	YORK		YES	Y	E	E	2			REAR-END	FOL-CLOSE	DYLGT	DRY	PDO	10-02-2018	
51	30	06	06	00.00	YORK		YES	Y	E	E	2			OTH-BACKING	OTHER	DYLGT	DRY	PDO	10-04-2018	
51	30	06	06	00.00	YORK		YES	Y	S	W	2	1		RIGHT-ANGLE	F-YIELD	DARK	DRY	P INJ	11-09-2018	
51	30	06	06	00.00	YORK	TURN LN MRGE	YES	Y	W	W	2			REAR-END	FOL-CLOSE	DYLGT	DRY	PDO	12-21-2018	
51	30	06	06	00.00	YORK		YES	Y	W	W	2			REAR-END	FOL-CLOSE	DYLGT	WET	PDO	12-24-2018	
51	30	06	06	00.00	YORK		YES	Y	E	E	2			REAR-END	FOL-CLOSE	DARK	DRY	PDO	12-30-2018	
51	30	06	06	00.00	YORK		YES	Y	W	W	2			REAR-END	FOL-CLOSE	DYLGT	DRY	PDO	02-01-2019	
51	30	06	06	00.00	YORK		YES	Y	E	S	2			ANGLE-TURNING	F-YIELD	DYLGT	DRY	PDO	02-04-2019	
51	30	06	06	00.00	YORK		YES	Y	E	E	2			ANGLE-TURNING	F-YIELD	DYLGT	DRY	PDO	04-20-2019	
51	30	06	06	00.00	YORK		YES	Y	E	W	2	2		ANGLE-TURNING	F-YIELD	DARK	DRY	N-I INJ	04-22-2019	
51	30	06	06	00.00	YORK		YES	Y	W	W	2			REAR-END	FOL-CLOSE	DYLGT	DRY	PDO	07-06-2019	
51	30	06	06	00.00	YORK		YES	Y	E	E	2			REAR-END	F-STOP	DYLGT	DRY	PDO	08-05-2019	
51	30	06	06	00.00	YORK	WKZONE	YES	Y	N	N	2			REAR-END	FOL-CLOSE	DYLGT	DRY	PDO	08-14-2019	
51	30	06	06	00.00	YORK		YES	Y	S	S	2			ANGLE-TURNING	INATT	DYLGT	DRY	PDO	08-19-2019	
51	30	06	06	00.00	YORK	TURN LN MRGE	YES	Y	W	W	2			REAR-END	FOL-CLOSE	DYLGT	DRY	PDO	09-05-2019	
51	30	06	06	00.00	YORK		YES	Y	W	W	3			REAR-END	FOL-CLOSE	DYLGT	DRY	PDO	10-25-2019	
51	30	06	06	00.00	YORK		YES	Y	W	W	2			ANGLE-TURNING	F-YIELD	DARK	WET	PDO	10-25-2019	

* INCLUDES SUSPECTED SERIOUS, NON-INCAPACITATING, AND POSSIBLE INJURIES.



HIGHWAY SYSTEM COLLISION LISTING

Date Range: 01-01-2017 Thru 12-18-2024

Program Provided by:
 Traffic Engineering Division
 Collision Analysis and Safety Branch
 (405) 522-0985
 Created: 12/18/2024 by Stephen Waldrop

USE

				HIGHWAY COLLISIONS			CITY STREET COLLISIONS			COUNTY ROAD COLLISIONS					TOTAL COLLISIONS				
Cnty	City	CS #	Int. #	Mile Post	Location	Features	Int. Related	On Map	Dir. 1	Dir. 2	# Veh.	# Inj.*	# Fat.	Type of Collision	Unsafe Unlawful	Lighting Cond.	Roadway Cond.	Severity	Date
51	30	06	06	00.00	YORK	TURN LN MRGE	YES	Y	S	S	2	1		REAR-END	FOL-CLOSE	DYLGT	DRY	P INJ	11-04-2019
51	30	06	06	00.00	YORK		YES	Y	E	E	2			REAR-END	INATT	DYLGT	DRY	PDO	12-31-2019
51	30	06	06	00.00	YORK		YES	Y	E	E	2			REAR-END	F-YIELD	DYLGT	DRY	PDO	04-15-2020
51	30	06	06	00.00	YORK	TURN LN MRGE	YES	Y	W	W	2			ANGLE-TURNING	F-YIELD	DYLGT	DRY	PDO	06-10-2020
51	30	06	06	00.00	YORK	TURN LN MRGE	YES	Y	E	E	2			REAR-END	INATT	DYLGT	DRY	PDO	07-01-2020
51	30	06	06	00.00	YORK		YES	Y	W	W	2			REAR-END	FOL-CLOSE	DYLGT	DRY	PDO	09-24-2020
51	30	06	06	00.00	YORK		YES	Y	W	S	2			ANGLE-TURNING	F-YIELD	DYLGT	DRY	PDO	09-27-2020
51	30	06	06	00.00	YORK		YES	Y	W	W	2			REAR-END	FOL-CLOSE	DYLGT	DRY	PDO	10-01-2020
51	30	06	06	00.00	YORK		YES	Y	E	E	2			REAR-END	FOL-CLOSE	DYLGT	DRY	PDO	11-09-2020
51	30	06	06	00.00	YORK		YES	Y	W	W	2	1		REAR-END	FOL-CLOSE	DYLGT	DRY	P INJ	01-11-2021
51	30	06	06	00.00	YORK		YES	Y	S	S	2			REAR-END	OTHER	DARK	DRY	PDO	03-21-2021
51	30	06	06	00.00	YORK		YES	Y	W	W	2			REAR-END	FOL-CLOSE	DYLGT	DRY	PDO	04-12-2021
51	30	06	06	00.00	YORK		YES	Y	N	N	2			REAR-END	IMP-TURN	DYLGT	DRY	PDO	04-15-2021
51	30	06	06	00.00	YORK		YES	Y	N	N	2	1		SIDESWIPE-SAME	IMP-LN-CHG	DYLGT	DRY	P INJ	06-29-2021
51	30	06	06	00.00	YORK	TURN LN MRGE	YES	Y	E	E	2			REAR-END	FOL-CLOSE	DYLGT	DRY	PDO	07-12-2021
51	30	06	06	00.00	YORK		YES	Y	E	W	2	1		REAR-END	FOL-CLOSE	DYLGT	DRY	N-I INJ	07-18-2021
51	30	06	06	00.00	YORK		YES	Y	S	S	2			REAR-END	FOL-CLOSE	DYLGT	DRY	PDO	09-06-2021
51	30	06	06	00.00	YORK		YES	Y	S	S	2			ANGLE-TURNING	F-YIELD	DARK	DRY	PDO	09-24-2021
51	30	06	06	00.00	YORK		YES	Y	W	W	3	3		REAR-END	FOL-CLOSE	DYLGT	DRY	N-I INJ	10-06-2021
51	30	06	06	00.00	YORK		YES	Y	N	N	2			REAR-END		DYLGT	DRY	PDO	01-14-2022
51	30	06	06	00.00	YORK		YES	Y	E	E	2	1		REAR-END	FOL-CLOSE	DYLGT	DRY	N-I INJ	04-12-2022
51	30	06	06	00.00	YORK		YES	Y	W	W	2	1		OTHER	FOL-CLOSE	DYLGT	DRY	P INJ	04-26-2022
51	30	06	06	00.00	YORK		YES	Y	E	W	2			ANGLE-TURNING	IMP-TURN	DYLGT	DRY	PDO	09-16-2022
51	30	06	06	00.00	YORK		YES	Y	E	E	2			REAR-END	FOL-CLOSE	DYLGT	DRY	PDO	10-19-2022
51	30	06	06	00.00	YORK	TURN LN MRGE	YES	Y	W	W	2	1		OTHER	FOL-CLOSE	DYLGT	DRY	P INJ	11-15-2022
51	30	06	06	00.00	YORK		YES	Y	W	W	2	1		REAR-END	FOL-CLOSE	DYLGT	DRY	P INJ	12-15-2022
(51) MUSKOGEE		(30) MUSKOGEE			HWY: US-62, SHAWNEE BYPASS			AT: SH-16,					YORK ST.						
51	30	47	06	03.50	YORK ST.		YES	Y	W	W	2			REAR-END	FOL-CLOSE	DYLGT	DRY	PDO	02-27-2017
51	30	47	06	03.50	YORK ST.		YES	Y	W	W	3	3		REAR-END	FOL-CLOSE	DYLGT	DRY	N-I INJ	03-28-2017
51	30	47	06	03.50	YORK ST.		YES	Y	W	W	2			ANGLE-TURNING	F-STOP	DUSK	DRY	PDO	08-08-2017
51	30	47	06	03.50	YORK ST.		YES	Y	W	W	2			REAR-END	FOL-CLOSE	DYLGT	DRY	PDO	05-23-2018
51	30	47	06	03.50	YORK ST.		YES	Y	S	S	2			ANGLE-TURNING	IMP-TURN	DYLGT	DRY	PDO	10-15-2018
51	30	47	06	03.50	YORK ST.		YES	Y	E	E	2			REAR-END	INATT	DYLGT	DRY	PDO	05-15-2019
51	30	47	06	03.50	YORK ST.	TURN LN MRGE	YES	Y	S	S	2			REAR-END	FOL-CLOSE	DYLGT	DRY	PDO	01-03-2020
51	30	47	06	03.50	YORK ST.		YES	Y	W	W	3			REAR-END	FOL-CLOSE	DYLGT	DRY	PDO	01-06-2020
51	30	47	06	03.50	YORK ST.		YES	Y	E	E	2			REAR-END	INATT	DYLGT	DRY	PDO	10-23-2020
51	30	47	06	03.50	YORK ST.		YES	Y	E	W	2			REAR-END	FOL-CLOSE	DYLGT	DRY	PDO	09-07-2021

* INCLUDES SUSPECTED SERIOUS, NON-INCAPACITATING, AND POSSIBLE INJURIES.



HIGHWAY SYSTEM COLLISION LISTING

Date Range: 01-01-2017 Thru 12-18-2024

Program Provided by:
 Traffic Engineering Division
 Collision Analysis and Safety Branch
 (405) 522-0985
 Created: 12/18/2024 by Stephen Waldrop

USE

				HIGHWAY COLLISIONS			CITY STREET COLLISIONS			COUNTY ROAD COLLISIONS					TOTAL COLLISIONS				
Cnty	City	CS #	Int. #	Mile Post	Location	Features	Int. Related	On Map	Dir. 1	Dir. 2	# Veh.	# Inj.*	# Fat.	Type of Collision	Unsafe Unlawful	Lighting Cond.	Roadway Cond.	Severity	Date
51	30	47	06	03.50	YORK ST.		YES	Y	E	E	2	1		REAR-END	INATT	DYLGT	DRY	P INJ	06-06-2022
51	30	47	06	03.50	YORK ST.	TURN LN MRGE	YES	Y	E	E	2	1		REAR-END	F-YIELD	DYLGT	WET	P INJ	05-04-2023
51	30	47	06	03.50	YORK ST.		YES	Y	E	E	2			OTHER	F-YIELD	DYLGT	DRY	PDO	06-01-2023
(51) MUSKOGEE				(30) MUSKOGEE HWY: , YORK ST.			AT: US-62,					SHAWNEE BYPASS							
51	30	49	06	00.00	SHAWNEE BYPASS		YES	Y	S	-	1			F-O CURB	IMP-TURN	DYLGT	DRY	PDO	02-08-2017
51	30	49	06	00.00	SHAWNEE BYPASS		YES	Y	S	S	2			ANGLE-TURNING	F-YIELD	DYLGT	WET	PDO	03-11-2017
51	30	49	06	00.00	SHAWNEE BYPASS	TURN LN MRGE	YES	Y	E	E	2			REAR-END	FOL-CLOSE	DYLGT	DRY	PDO	04-27-2017
51	30	49	06	00.00	SHAWNEE BYPASS		YES	Y	S	-	1	1		ROLLOVER	UNSAF-SPD	DARK	DRY	SS INJ	05-20-2017
51	30	49	06	00.00	SHAWNEE BYPASS		YES	Y	E	E	2			REAR-END	FOL-CLOSE	DYLGT	DRY	PDO	06-20-2017
51	30	49	06	00.00	SHAWNEE BYPASS		YES	Y	N	N	2	1		REAR-END	INATT	DYLGT	DRY	P INJ	06-30-2017
51	30	49	06	00.00	SHAWNEE BYPASS		YES	Y	W	W	2			ANGLE-TURNING	NEG-DRVING	DYLGT	DRY	PDO	08-24-2017
51	30	49	06	00.00	SHAWNEE BYPASS		YES	Y	N	N	2			ANGLE-TURNING	OTHER	DYLGT	DRY	PDO	01-22-2018
51	30	49	06	00.00	SHAWNEE BYPASS		YES	Y	N	N	2			REAR-END	FOL-CLOSE	DYLGT	DRY	PDO	06-15-2018
51	30	49	06	00.00	SHAWNEE BYPASS		YES	Y	W	W	2			REAR-END	FOL-CLOSE	DYLGT	DRY	PDO	06-28-2018
51	30	49	06	00.00	SHAWNEE BYPASS		YES	Y	N	N	3			REAR-END	FOL-CLOSE	DYLGT	DRY	PDO	09-12-2018
51	30	49	06	00.00	SHAWNEE BYPASS		YES	Y	N	N	2			ANGLE-TURNING	IMP-TURN	DYLGT	DRY	PDO	10-06-2018
51	30	49	06	00.00	SHAWNEE BYPASS		YES	Y	N	E	2			REAR-END	IMP-BACK	DYLGT	DRY	PDO	03-07-2019
51	30	49	06	00.00	SHAWNEE BYPASS		YES	Y	E	E	2	1		REAR-END	FOL-CLOSE	DYLGT	DRY	P INJ	03-15-2019
51	30	49	06	00.00	SHAWNEE BYPASS		YES	Y	W	W	2			ANGLE-TURNING	FOL-CLOSE	DYLGT	DRY	PDO	07-12-2019
51	30	49	06	00.00	SHAWNEE BYPASS		YES	Y	N	N	2			REAR-END	FOL-CLOSE	DYLGT	WET	PDO	12-28-2019
51	30	49	06	00.00	SHAWNEE BYPASS	TURN LN MRGE	YES	Y	W	E	2			REAR-END	FOL-CLOSE	DYLGT	DRY	PDO	06-11-2020
51	30	49	06	00.00	SHAWNEE BYPASS		YES	Y	S	S	2			REAR-END	INATT	DYLGT	DRY	PDO	11-25-2020
51	30	49	06	00.00	SHAWNEE BYPASS		YES	Y	S	S	2	1		REAR-END	F-STOP	DYLGT	DRY	P INJ	03-15-2021
51	30	49	06	00.00	SHAWNEE BYPASS		YES	Y	N	N	2			SIDESWIPE-SAME	OTHER	DYLGT	WET	PDO	05-20-2021
51	30	49	06	00.00	SHAWNEE BYPASS		YES	Y	N	N	2	1		REAR-END	FOL-CLOSE	DYLGT	DRY	P INJ	09-28-2021
51	30	49	06	00.00	SHAWNEE BYPASS		YES	Y	S	S	2			REAR-END	IMP-START	DYLGT	DRY	PDO	12-14-2021
51	30	49	06	00.00	SHAWNEE BYPASS		YES	Y	W	W	2			REAR-END		DYLGT	DRY	PDO	03-27-2023
(51) MUSKOGEE				(30) MUSKOGEE HWY: US-64, PEAK BLVD			AT: US-69												
51	30	44	12	00.00	US-69		YES	Y	E	W	2	1		ANGLE-TURNING	F-YIELD	DAWN	DRY	P INJ	04-29-2019
(51) MUSKOGEE				(30) MUSKOGEE HWY: , 32 ST.			AT: US-64,					PEAK BLVD. O.P.							
51	30	56	12	12.64	PEAK BLVD. O.P.	TERM LOC LFT TURN LN MRGE	YES	Y	E	E	2	1		REAR-END	FOL-CLOSE	DYLGT	WET	P INJ	05-19-2017
51	30	56	12	12.64	PEAK BLVD. O.P.	TERM LOC LFT TURN LN MRGE	YES	Y	N	N	2	1		REAR-END	FOL-CLOSE	DYLGT	DRY	P INJ	05-29-2017
51	30	56	12	12.64	PEAK BLVD. O.P.	TERM LOC LFT	YES	Y	S	E	2	1		ANGLE-TURNING	F-YIELD	DARK	WET	P INJ	06-30-2017
51	30	56	12	12.64	PEAK BLVD. O.P.	TERM LOC LFT	YES	Y	S	E	2	1		RIGHT-ANGLE	F-YIELD	DYLGT	DRY	P INJ	11-11-2017
51	30	56	12	12.64	PEAK BLVD. O.P.	TERM LOC UND	YES	Y	E	E	2			OTHER	NEG-DRVING	DYLGT	DRY	PDO	11-20-2017

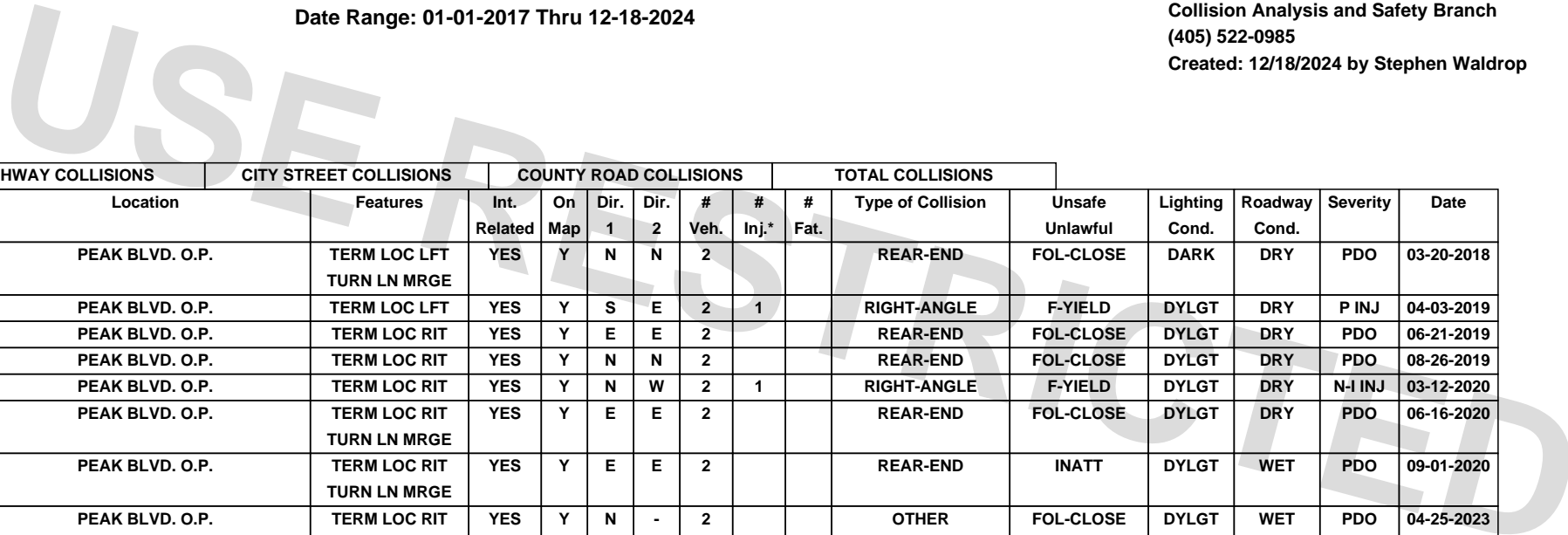
* INCLUDES SUSPECTED SERIOUS, NON-INCAPACITATING, AND POSSIBLE INJURIES.



HIGHWAY SYSTEM COLLISION LISTING

Date Range: 01-01-2017 Thru 12-18-2024

Program Provided by:
 Traffic Engineering Division
 Collision Analysis and Safety Branch
 (405) 522-0985
 Created: 12/18/2024 by Stephen Waldrop



				HIGHWAY COLLISIONS			CITY STREET COLLISIONS			COUNTY ROAD COLLISIONS					TOTAL COLLISIONS				
Cnty	City	CS #	Int. #	Mile Post	Location	Features	Int. Related	On Map	Dir. 1	Dir. 2	# Veh.	# Inj.*	# Fat.	Type of Collision	Unsafe Unlawful	Lighting Cond.	Roadway Cond.	Severity	Date
51	30	56	12	12.64	PEAK BLVD. O.P.	TERM LOC LFT TURN LN MRGE	YES	Y	N	N	2			REAR-END	FOL-CLOSE	DARK	DRY	PDO	03-20-2018
51	30	56	12	12.64	PEAK BLVD. O.P.	TERM LOC LFT	YES	Y	S	E	2	1		RIGHT-ANGLE	F-YIELD	DYLGT	DRY	P INJ	04-03-2019
51	30	56	12	12.64	PEAK BLVD. O.P.	TERM LOC RIT	YES	Y	E	E	2			REAR-END	FOL-CLOSE	DYLGT	DRY	PDO	06-21-2019
51	30	56	12	12.64	PEAK BLVD. O.P.	TERM LOC RIT	YES	Y	N	N	2			REAR-END	FOL-CLOSE	DYLGT	DRY	PDO	08-26-2019
51	30	56	12	12.64	PEAK BLVD. O.P.	TERM LOC RIT	YES	Y	N	W	2	1		RIGHT-ANGLE	F-YIELD	DYLGT	DRY	N-I INJ	03-12-2020
51	30	56	12	12.64	PEAK BLVD. O.P.	TERM LOC RIT TURN LN MRGE	YES	Y	E	E	2			REAR-END	FOL-CLOSE	DYLGT	DRY	PDO	06-16-2020
51	30	56	12	12.64	PEAK BLVD. O.P.	TERM LOC RIT TURN LN MRGE	YES	Y	E	E	2			REAR-END	INATT	DYLGT	WET	PDO	09-01-2020
51	30	56	12	12.64	PEAK BLVD. O.P.	TERM LOC RIT TURN LN MRGE	YES	Y	N	-	2			OTHER	FOL-CLOSE	DYLGT	WET	PDO	04-25-2023
51	30	56	12	12.64	PEAK BLVD. O.P.	TURN LN MRGE TERM LOC LFT	YES	Y	N	N	2			REAR-END	IMP-BACK	DYLGT	DRY	PDO	11-16-2023

(51) MUSKOGEE (30) MUSKOGEE HWY: AT: PEAK BLVD. OP

51	30	12	13	00.00	PEAK BLVD. OP		YES	Y	N	-	1	1		OTHER	UNSAF-SPD	DYLGT	DRY	P INJ	04-01-2019
----	----	----	----	-------	---------------	--	-----	---	---	---	---	---	--	-------	-----------	-------	-----	-------	------------

(51) MUSKOGEE (30) MUSKOGEE HWY: AT: OP

51	30	53	13	00.00	OP	TERM LOC LFT	YES	Y	S		2			ANGLE-TURNING	F-YIELD	DYLGT	DRY	PDO	07-23-2019
----	----	----	----	-------	----	--------------	-----	---	---	--	---	--	--	---------------	---------	-------	-----	-----	------------

(51) MUSKOGEE (30) MUSKOGEE HWY: US-64B, NAT IRISH EXP. AT: US-64, PEAK BLVD. OP

51	30	54	13	00.00	PEAK BLVD. OP	BRIDGE WKZONE	NO	Y	N	-	1			F-O CURB	NO-IMP-ACT	DYLGT	DRY	PDO	06-17-2017
51	30	54	13	00.00	PEAK BLVD. OP	BRIDGE WKZONE	NO	Y	S	-	1			OTHER	IMP-TURN	DYLGT	DRY	PDO	06-17-2017
51	30	54	13	00.00	PEAK BLVD. OP		YES	Y	W	W	2	2		REAR-END	FOL-CLOSE	DYLGT	DRY	P INJ	08-21-2017
51	30	54	13	00.00	PEAK BLVD. OP	TERM LOC RIT TURN LN MRGE	YES	Y	E	E	2			REAR-END	F-YIELD	DARK	DRY	PDO	02-01-2018
51	30	54	13	00.00	PEAK BLVD. OP	TERM LOC LFT	YES	Y	S	E	2	1		RIGHT-ANGLE	F-YIELD	DYLGT	DRY	N-I INJ	08-31-2018
51	30	54	13	00.00	PEAK BLVD. OP	TERM LOC LFT	YES	Y	S	W	2	1		RIGHT-ANGLE	F-YIELD	DYLGT	DRY	P INJ	01-16-2019
51	30	54	13	00.00	PEAK BLVD. OP	TERM LOC LFT	YES	Y	S	S	2			REAR-END	FOL-CLOSE	DYLGT	DRY	PDO	05-07-2019
51	30	54	13	00.00	PEAK BLVD. OP	TERM LOC LFT TURN LN MRGE	YES	Y	S	W	2	1		ANGLE-TURNING	F-YIELD	DYLGT	DRY	N-I INJ	02-14-2020
51	30	54	13	00.00	PEAK BLVD. OP	TERM LOC LFT	YES	Y	W	W	2			ANGLE-TURNING	FOL-CLOSE	DARK	WET	PDO	12-02-2020
51	30	54	13	00.00	PEAK BLVD. OP	TERM LOC LFT	YES	Y	W	S	2	3		OTHER	SLEEPY	DYLGT	DRY	P INJ	10-08-2021

(51) MUSKOGEE (30) MUSKOGEE HWY: US-64B, NAT IRISH EXP. AT: US-64, US-64 NB EXIT

51	30	54	13	00.06	US-64 NB EXIT	LOOP	NO	Y	E	-	1			ROLLOVER	UNSAF-SPD	DYLGT	DRY	PDO	10-11-2022
----	----	----	----	-------	---------------	------	----	---	---	---	---	--	--	----------	-----------	-------	-----	-----	------------

(51) MUSKOGEE (30) MUSKOGEE HWY: US-64B, NAT IRISH EXP.

51	30	54	13	00.08			NO	Y	S	-	1			F-O FENCE	UNSAF-SPD	DARK	WET	PDO	11-23-2019
----	----	----	----	-------	--	--	----	---	---	---	---	--	--	-----------	-----------	------	-----	-----	------------

(51) MUSKOGEE (30) MUSKOGEE HWY: US-64B, NAT IRISH EXP.

* INCLUDES SUSPECTED SERIOUS, NON-INCAPACITATING, AND POSSIBLE INJURIES.



HIGHWAY SYSTEM COLLISION LISTING

Date Range: 01-01-2017 Thru 12-18-2024

Program Provided by:
 Traffic Engineering Division
 Collision Analysis and Safety Branch
 (405) 522-0985
 Created: 12/18/2024 by Stephen Waldrop

USE

				HIGHWAY COLLISIONS			CITY STREET COLLISIONS			COUNTY ROAD COLLISIONS					TOTAL COLLISIONS					
Cnty	City	CS #	Int. #	Mile Post	Location	Features	Int. Related	On Map	Dir. 1	Dir. 2	# Veh.	# Inj.*	# Fat.	Type of Collision	Unsafe Unlawful	Lighting Cond.	Roadway Cond.	Severity	Date	
51	30	54	13	00.10			NO	Y	S	-	1	1		F-O TREE	UNSAF-SPD	DYLGT	WET	P INJ	01-02-2019	
(51) MUSKOGEE				(30) MUSKOGEE			HWY: US-64B, NAT IRISH EXP.													
51	30	54	13	00.26			NO	Y	S	S	2			SIDESWIPE-SAME	IMP-LN-CHG	DYLGT	DRY	PDO	02-02-2021	
(51) MUSKOGEE				(30) MUSKOGEE			HWY: US-64B, NAT IRISH EXP. AT: US-64, US-64 NB ENT													
51	30	54	13	00.40	US-64 NB ENT	M/L RAMP MRG	NO	Y	N	N	2	1		SIDESWIPE-SAME	OTHER	DARK	WET	N-I INJ	07-02-2017	
(51) MUSKOGEE				(30) MUSKOGEE			HWY: US-62B, MAIN ST. AT: US-64B, OKMULGEE AVE.													
51	30	51	19	00.00	OKMULGEE AVE.		YES	Y	S	S	2			REAR-END	FOL-CLOSE	DYLGT	DRY	PDO	02-10-2017	
51	30	51	19	00.00	OKMULGEE AVE.		YES	Y	S	W	2			RIGHT-ANGLE	F-YIELD	DYLGT	DRY	PDO	03-14-2017	
51	30	51	19	00.00	OKMULGEE AVE.		YES	Y	W	W	2			REAR-END	D-W-I	DYLGT	DRY	PDO	08-28-2017	
51	30	51	19	00.00	OKMULGEE AVE.		YES	Y	W	S	2	2		RIGHT-ANGLE	F-STOP	DYLGT	DRY	P INJ	10-12-2017	
51	30	51	19	00.00	OKMULGEE AVE.		YES	Y	S	W	2			RIGHT-ANGLE	F-YIELD	DYLGT	DRY	PDO	11-08-2017	
51	30	51	19	00.00	OKMULGEE AVE.		YES	Y	E	E	2	1		REAR-END	OTHER	DYLGT	DRY	P INJ	12-11-2017	
51	30	51	19	00.00	OKMULGEE AVE.		YES	Y	S	W	3	1		RIGHT-ANGLE	F-YIELD	DYLGT	DRY	N-I INJ	05-11-2018	
51	30	51	19	00.00	OKMULGEE AVE.		YES	Y	N	N	2			REAR-END	FOL-CLOSE	DYLGT	DRY	PDO	09-13-2018	
51	30	51	19	00.00	OKMULGEE AVE.		YES	Y	W	E	2	2		ANGLE-TURNING	IMP-TURN	DYLGT	DRY	P INJ	09-22-2019	
51	30	51	19	00.00	OKMULGEE AVE.		YES	Y	E	E	2	2		SIDESWIPE-SAME	F-YIELD	DYLGT	DRY	P INJ	01-06-2020	
(51) MUSKOGEE				(30) MUSKOGEE			HWY: US-64B, MAIN ST. AT: US-62B, OKMULGEE													
51	30	54	19	02.76	OKMULGEE		YES	Y	S		3	1		REAR-END	D-W-I	DYLGT	DRY	N-I INJ	07-13-2019	
(51) MUSKOGEE				(30) MUSKOGEE			HWY: , OKMULGEE AVE. AT: US-64B, MAIN ST.													
51	30	66	19	01.97	MAIN ST.		YES	Y	W	W	3			REAR-END	FOL-CLOSE	DYLGT	DRY	PDO	05-21-2018	
51	30	66	19	01.97	MAIN ST.		YES	Y	E	E	3	2		REAR-END	D-W-I	DYLGT	DRY	N-I INJ	06-28-2018	
51	30	66	19	01.97	MAIN ST.		YES	Y	E	E	2			REAR-END	FOL-CLOSE	DYLGT	DRY	PDO	08-08-2018	
51	30	66	19	01.97	MAIN ST.		YES	Y	E	S	3			RIGHT-ANGLE	D-W-I	DARK	WET	PDO	10-12-2018	
51	30	66	19	01.97	MAIN ST.		YES	Y	S	N	2			ANGLE-TURNING	F-YIELD	DARK	DRY	PDO	11-03-2018	
51	30	66	19	01.97	MAIN ST.		YES	Y	E	E	2			REAR-END	INATT	DYLGT	DRY	PDO	09-30-2019	
51	30	66	19	01.97	MAIN ST.		YES	Y	E	S	4			RIGHT-ANGLE	F-STOP	DYLGT	WET	PDO	10-28-2019	
51	30	66	19	01.97	MAIN ST.		YES	Y	W	E	2			ANGLE-TURNING	UNSAF-SPD	DYLGT	ICE	PDO	11-12-2019	
51	30	66	19	01.97	MAIN ST.		YES	Y	S	S	2			REAR-END	INATT	DYLGT	DRY	PDO	02-24-2020	
51	30	66	19	01.97	MAIN ST.		YES	Y	E	E	2			REAR-END	IMP-LN-CHG	DYLGT	DRY	PDO	02-01-2021	
51	30	66	19	01.97	MAIN ST.		YES	Y	N	N	2			REAR-END	FOL-CLOSE	DYLGT	DRY	PDO	05-20-2021	
51	30	66	19	01.97	MAIN ST.		YES	Y	E	E	2			REAR-END	INATT	DYLGT	DRY	PDO	06-10-2021	
51	30	66	19	01.97	MAIN ST.		YES	Y	W	-	1			F-O POLE-OTHER	UNSAF-SPD	DARK	DRY	PDO	06-30-2021	
51	30	66	19	01.97	MAIN ST.		YES	Y	N	W	2	3		OTHER		DARK	DRY	N-I INJ	05-27-2022	
51	30	66	19	01.97	MAIN ST.		YES	Y	W	S	2	2		RIGHT-ANGLE		DYLGT	DRY	P INJ	09-05-2022	
51	30	66	19	01.97	MAIN ST.		YES	Y	W	W	2	2		OTHER	FOL-CLOSE	DYLGT	DRY	P INJ	06-20-2023	
51	30	66	19	01.97	MAIN ST.	WKZONE	YES	Y	W	W	2			REAR-END	FOL-CLOSE	DYLGT	DRY	PDO	10-11-2023	
(51) MUSKOGEE				(30) MUSKOGEE			HWY: US-62, SHAWNEE BYPASS AT: US-62B, MAIN ST.													

* INCLUDES SUSPECTED SERIOUS, NON-INCAPACITATING, AND POSSIBLE INJURIES.



HIGHWAY SYSTEM COLLISION LISTING

Date Range: 01-01-2017 Thru 12-18-2024

Program Provided by:
 Traffic Engineering Division
 Collision Analysis and Safety Branch
 (405) 522-0985
 Created: 12/18/2024 by Stephen Waldrop

USE

HIGHWAY COLLISIONS					CITY STREET COLLISIONS			COUNTY ROAD COLLISIONS					TOTAL COLLISIONS						
Cnty	City	CS #	Int. #	Mile Post	Location	Features	Int. Related	On Map	Dir. 1	Dir. 2	# Veh.	# Inj.*	# Fat.	Type of Collision	Unsafe Unlawful	Lighting Cond.	Roadway Cond.	Severity	Date
51	30	47	20	02.47	MAIN ST.		YES	Y	W	W	3			REAR-END	FOL-CLOSE	DYLGT	WET	PDO	01-18-2017
51	30	47	20	02.47	MAIN ST.		YES	Y	E	E	3			REAR-END	FOL-CLOSE	DYLGT	DRY	PDO	05-31-2017
51	30	47	20	02.47	MAIN ST.		YES	Y	W	W	2			REAR-END	F-STOP	DARK	DRY	PDO	06-01-2017
51	30	47	20	02.47	MAIN ST.		YES	Y	E	-	1	1		F-O TRAFF-SIGN	OTHER	DYLGT	DRY	P INJ	07-04-2017
51	30	47	20	02.47	MAIN ST.		YES	Y	E	E	4	3		REAR-END	OTHER	DYLGT	DRY	P INJ	11-03-2017
51	30	47	20	02.47	MAIN ST.		YES	Y	W	W	2			REAR-END	FOL-CLOSE	DARK	DRY	PDO	12-29-2017
51	30	47	20	02.47	MAIN ST.		YES	Y	E	E	2			ANGLE-TURNING	F-YIELD	DYLGT	DRY	PDO	01-19-2018
51	30	47	20	02.47	MAIN ST.	TURN LN MRGE	YES	Y	E	E	2	1		REAR-END	FOL-CLOSE	DARK	DRY	P INJ	02-02-2018
51	30	47	20	02.47	MAIN ST.		YES	Y	E	E	2	2		REAR-END	FOL-CLOSE	DARK	ICE	P INJ	02-10-2018
51	30	47	20	02.47	MAIN ST.		YES	Y	W	W	2			SIDESWIPE-SAME	IMP-LN-CHG	DYLGT	DRY	PDO	04-25-2018
51	30	47	20	02.47	MAIN ST.		YES	Y	W	W	2			REAR-END	FOL-CLOSE	DYLGT	DRY	PDO	06-15-2018
51	30	47	20	02.47	MAIN ST.		YES	Y	E	E	2	1		REAR-END	FOL-CLOSE	DYLGT	DRY	P INJ	07-14-2018
51	30	47	20	02.47	MAIN ST.		YES	Y	E	E	2			REAR-END	FOL-CLOSE	DYLGT	WET	PDO	10-19-2018
51	30	47	20	02.47	MAIN ST.		YES	Y	E	E	2			REAR-END	FOL-CLOSE	DYLGT	DRY	PDO	11-02-2018
51	30	47	20	02.47	MAIN ST.		YES	Y	E	E	2	3		REAR-END	INATT	DUSK	DRY	P INJ	12-01-2018
51	30	47	20	02.47	MAIN ST.		YES	Y	E	E	2			REAR-END	FOL-CLOSE	DYLGT	DRY	PDO	12-19-2018
51	30	47	20	02.47	MAIN ST.	TURN LN MRGE	YES	Y	E	E	2			REAR-END	INATT	DYLGT	DRY	PDO	01-17-2019
51	30	47	20	02.47	MAIN ST.		YES	Y	N	N	3	1		SIDESWIPE-SAME	FOL-CLOSE	DYLGT	DRY	P INJ	02-16-2019
51	30	47	20	02.47	MAIN ST.		YES	Y	E	E	2			ANGLE-TURNING	IMP-LN-CHG	DYLGT	WET	PDO	02-27-2019
51	30	47	20	02.47	MAIN ST.		YES	Y	W	W	2			REAR-END	UNSAF-SPD	DYLGT	WET	PDO	02-27-2019
51	30	47	20	02.47	MAIN ST.		YES	Y	W	W	2			REAR-END	FOL-CLOSE	DYLGT	DRY	PDO	04-12-2019
51	30	47	20	02.47	MAIN ST.		YES	Y	E	E	2	1		REAR-END	FOL-CLOSE	DYLGT	DRY	N-I INJ	05-22-2019
51	30	47	20	02.47	MAIN ST.		YES	Y	E	S	2	5		RIGHT-ANGLE	F-STOP	DYLGT	DRY	SS INJ	05-28-2019
51	30	47	20	02.47	MAIN ST.		YES	Y	N	E	2			RIGHT-ANGLE	F-YIELD	DYLGT	DRY	PDO	08-01-2019
51	30	47	20	02.47	MAIN ST.	UNL INSUF IN	YES	N	E	E	2	2		RIGHT-ANGLE	OTHER	DYLGT	WET	N-I INJ	08-09-2019
51	30	47	20	02.47	MAIN ST.	TURN LN MRGE	YES	Y	E	E	2	1		REAR-END	FOL-CLOSE	DYLGT	DRY	P INJ	07-28-2020
51	30	47	20	02.47	MAIN ST.		YES	Y	E	E	3			REAR-END	FOL-CLOSE	DYLGT	DRY	PDO	09-03-2020
51	30	47	20	02.47	MAIN ST.		YES	Y	E	E	2			REAR-END	FOL-CLOSE	DYLGT	DRY	PDO	09-25-2020
51	30	47	20	02.47	MAIN ST.		YES	Y	S	S	2			ANGLE-TURNING	OTHER	DYLGT	DRY	PDO	10-01-2020
51	30	47	20	02.47	MAIN ST.		YES	Y	E	E	2			SIDESWIPE-SAME	IMP-LN-CHG	DYLGT	WET	PDO	11-10-2020
51	30	47	20	02.47	MAIN ST.		YES	Y	N	N	2			ANGLE-TURNING	F-YIELD	DYLGT	DRY	PDO	02-24-2021
51	30	47	20	02.47	MAIN ST.		YES	Y	S	S	2			REAR-END	OTHER	DYLGT	DRY	PDO	04-12-2021
51	30	47	20	02.47	MAIN ST.		YES	Y	W	W	2	2		REAR-END	F-YIELD	DYLGT	DRY	P INJ	04-22-2022
51	30	47	20	02.47	MAIN ST.		YES	Y	E	E	2			REAR-END	FOL-CLOSE	DYLGT	WET	PDO	08-17-2022
51	30	47	20	02.47	MAIN ST.		YES	Y	N	W	2	4		ANGLE-TURNING		DYLGT	DRY	SS INJ	01-23-2023
51	30	47	20	02.47	MAIN ST.		YES	Y	N	N	2			OTHER	IMP-TURN	DYLGT	DRY	PDO	03-17-2023
51	30	47	20	02.47	MAIN ST.		YES	Y	E	E	2	3		REAR-END	INATT	DARK	DRY	P INJ	05-20-2023

* INCLUDES SUSPECTED SERIOUS, NON-INCAPACITATING, AND POSSIBLE INJURIES.



HIGHWAY SYSTEM COLLISION LISTING

Date Range: 01-01-2017 Thru 12-18-2024

Program Provided by:
 Traffic Engineering Division
 Collision Analysis and Safety Branch
 (405) 522-0985
 Created: 12/18/2024 by Stephen Waldrop

USE PREVIOUS EDITION

				HIGHWAY COLLISIONS			CITY STREET COLLISIONS			COUNTY ROAD COLLISIONS					TOTAL COLLISIONS					
Cnty	City	CS #	Int. #	Mile Post	Location	Features	Int. Related	On Map	Dir. 1	Dir. 2	# Veh.	# Inj.*	# Fat.	Type of Collision	Unsafe Unlawful	Lighting Cond.	Roadway Cond.	Severity	Date	
51	30	47	20	02.47	MAIN ST.		YES	Y	E	E	3	2		REAR-END		DYLGT	DRY	N-I INJ	06-26-2023	
51	30	47	20	02.47	MAIN ST.		YES	Y	W	W	2			ANGLE-TURNING	IMP-TURN	DYLGT	DRY	PDO	08-02-2023	
(51) MUSKOGEE				(30) MUSKOGEE HWY: US-62, SHAWNEE BYPASS																
51	30	47	20	02.48			NO	Y	E	E	2	1		REAR-END	FOL-CLOSE	DYLGT	DRY	N-I INJ	02-22-2017	
(51) MUSKOGEE				(30) MUSKOGEE HWY: US-62, SHAWNEE BYPASS																
51	30	47	20	02.51			NO	Y	E	E	2			REAR-END	FOL-CLOSE	DYLGT	DRY	PDO	06-14-2017	
(51) MUSKOGEE				(30) MUSKOGEE HWY: US-62, SHAWNEE BYPASS																
51	30	47	20	02.57		IMPACT ATNU8	NO	Y	E	-	1	1		F-O GUARDRL-FACE	OTHER	DYLGT	DRY	SS INJ	10-01-2018	
(51) MUSKOGEE				(30) MUSKOGEE HWY: US-62, SHAWNEE BYPASS																
51	30	47	20	02.66			NO	Y	W	-	1			ANIMAL	NO-IMP-ACT	DARK	DRY	PDO	04-06-2019	
(51) MUSKOGEE				(30) MUSKOGEE HWY: US-62B, MAIN ST. AT: US-62, SHAWNEE AVE.																
51	30	51	20	01.65	SHAWNEE AVE.		YES	Y	E	E	3			REAR-END	OTHER	DARK	DRY	PDO	03-04-2017	
51	30	51	20	01.65	SHAWNEE AVE.	TURN LN GORE	YES	Y	E	E	2			REAR-END	FOL-CLOSE	DYLGT	DRY	PDO	03-21-2017	
51	30	51	20	01.65	SHAWNEE AVE.		YES	Y	N	N	2			ANGLE-TURNING	IMP-TURN	DYLGT	DRY	PDO	07-13-2017	
51	30	51	20	01.65	SHAWNEE AVE.		YES	Y	S	S	2			ANGLE-TURNING	F-YIELD	DYLGT	DRY	PDO	08-19-2017	
51	30	51	20	01.65	SHAWNEE AVE.	TURN LN MRGE	YES	Y	E	E	2			REAR-END	FOL-CLOSE	DYLGT	DRY	PDO	09-07-2017	
51	30	51	20	01.65	SHAWNEE AVE.	TURN LN MRGE	YES	Y	E	E	2			REAR-END	FOL-CLOSE	DYLGT	DRY	PDO	09-20-2017	
51	30	51	20	01.65	SHAWNEE AVE.		YES	Y	W	W	2	2		REAR-END	FOL-CLOSE	DUSK	DRY	P INJ	10-20-2017	
51	30	51	20	01.65	SHAWNEE AVE.		YES	Y	N	N	2			REAR-END	FOL-CLOSE	DYLGT	DRY	PDO	10-23-2017	
51	30	51	20	01.65	SHAWNEE AVE.		YES	Y	W	N	2			ANGLE-TURNING	F-YIELD	DYLGT	DRY	PDO	12-26-2017	
51	30	51	20	01.65	SHAWNEE AVE.		YES	Y	E	E	2	2		REAR-END	FOL-CLOSE	DYLGT	DRY	P INJ	01-25-2018	
51	30	51	20	01.65	SHAWNEE AVE.		YES	Y	E	S	2			ANGLE-TURNING	INATT	DYLGT	DRY	PDO	03-09-2018	
51	30	51	20	01.65	SHAWNEE AVE.		YES	Y	N	N	2			REAR-END	FOL-CLOSE	DYLGT	DRY	PDO	09-12-2018	
51	30	51	20	01.65	SHAWNEE AVE.		YES	Y	W	W	2	1		REAR-END	FOL-CLOSE	DYLGT	DRY	P INJ	09-25-2018	
51	30	51	20	01.65	SHAWNEE AVE.		YES	Y	S	S	3	2		REAR-END	IMP-START	DYLGT	DRY	SS INJ	12-22-2018	
51	30	51	20	01.65	SHAWNEE AVE.		YES	Y	W	W	2			SIDESWIPE-SAME	OTHER	DYLGT	DRY	PDO	03-03-2019	
51	30	51	20	01.65	SHAWNEE AVE.		YES	Y	E	E	2			ANGLE-TURNING	IMP-TURN	DYLGT	DRY	PDO	03-06-2019	
51	30	51	20	01.65	SHAWNEE AVE.		YES	Y	E	N	2	2		ANGLE-TURNING	F-YIELD	DARK	DRY	SS INJ	03-25-2019	
51	30	51	20	01.65	SHAWNEE AVE.		YES	Y	N	W	2			ANGLE-TURNING	F-YIELD	DYLGT	DRY	PDO	05-02-2019	
51	30	51	20	01.65	SHAWNEE AVE.	UNL INSUF IN	YES	N	N	N	2			REAR-END	D-W-I	DYLGT	DRY	PDO	06-04-2019	
51	30	51	20	01.65	SHAWNEE AVE.		YES	Y	N	N	2	1		REAR-END	FOL-CLOSE	DYLGT	DRY	P INJ	07-18-2019	
51	30	51	20	01.65	SHAWNEE AVE.		YES	Y	E	E	2			REAR-END	FOL-CLOSE	DYLGT	DRY	PDO	09-06-2019	
51	30	51	20	01.65	SHAWNEE AVE.		YES	Y	W	W	2	1		REAR-END	FOL-CLOSE	DYLGT	DRY	P INJ	10-22-2019	
51	30	51	20	01.65	SHAWNEE AVE.		YES	Y	W	E	2			ANGLE-TURNING	IMP-TURN	DYLGT	DRY	PDO	02-08-2020	
51	30	51	20	01.65	SHAWNEE AVE.		YES	Y	N	N	2			REAR-END	F-STOP	DYLGT	DRY	PDO	02-19-2020	
51	30	51	20	01.65	SHAWNEE AVE.		YES	Y	S	S	2	1		SIDESWIPE-SAME	IMP-LN-CHG	DYLGT	DRY	P INJ	03-20-2020	
51	30	51	20	01.65	SHAWNEE AVE.		YES	Y	S	S	2			SIDESWIPE-SAME	IMP-LN-CHG	Other	OTHER	PDO	06-26-2020	

* INCLUDES SUSPECTED SERIOUS, NON-INCAPACITATING, AND POSSIBLE INJURIES.



HIGHWAY SYSTEM COLLISION LISTING

Date Range: 01-01-2017 Thru 12-18-2024

Program Provided by:
 Traffic Engineering Division
 Collision Analysis and Safety Branch
 (405) 522-0985
 Created: 12/18/2024 by Stephen Waldrop

				HIGHWAY COLLISIONS			CITY STREET COLLISIONS			COUNTY ROAD COLLISIONS					TOTAL COLLISIONS					
Cnty	City	CS #	Int. #	Mile Post	Location	Features	Int. Related	On Map	Dir. 1	Dir. 2	# Veh.	# Inj.*	# Fat.	Type of Collision	Unsafe Unlawful	Lighting Cond.	Roadway Cond.	Severity	Date	
51	30	51	20	01.65	SHAWNEE AVE.		YES	Y	S	S	2			ANGLE-TURNING	F-YIELD	DYLGT	WET	PDO	01-06-2021	
51	30	51	20	01.65	SHAWNEE AVE.		YES	Y	N	N	2			SIDESWIPE-SAME	IMP-LN-CHG	DYLGT	DRY	PDO	05-18-2021	
51	30	51	20	01.65	SHAWNEE AVE.	TURN LN MRGE	YES	Y	E	E	2	2		REAR-END	FOL-CLOSE	DYLGT	DRY	P INJ	07-02-2021	
51	30	51	20	01.65	SHAWNEE AVE.		YES	Y	N	N	2			REAR-END	FOL-CLOSE	DYLGT	DRY	PDO	07-08-2021	
51	30	51	20	01.65	SHAWNEE AVE.		YES	Y	N	N	2	2		REAR-END	IMP-START	DYLGT	DRY	P INJ	08-04-2021	
51	30	51	20	01.65	SHAWNEE AVE.		YES	Y	E	E	2			REAR-END	UNSAF-SPD	DYLGT	WET	PDO	05-23-2022	
51	30	51	20	01.65	SHAWNEE AVE.		YES	Y	E	E	2	1		REAR-END	FOL-CLOSE	DYLGT	WET	P INJ	05-04-2023	
51	30	51	20	01.65	SHAWNEE AVE.		YES	Y	W	W	2			ANGLE-TURNING	IMP-TURN	DYLGT	DRY	PDO	11-02-2023	
(51) MUSKOGEE				(30) MUSKOGEE	HWY: US-64, PEAK BLVD			AT: 00.01 after BEG 50 MPH												
51	30	44		00.01			NO	Y	E	E	2			SIDESWIPE-SAME	D-W-I	DARK	DRY	PDO	02-27-2020	
(51) MUSKOGEE				(30) MUSKOGEE	HWY: US-64, PEAK BLVD			AT: 00.03 after BEG 50 MPH												
51	30	44		00.03			NO	Y	W	-	1	1		OTH-SINGLE-VEH		DYLGT	DRY	SS INJ	05-28-2022	
(51) MUSKOGEE				(30) MUSKOGEE	HWY: US-64, PEAK BLVD			AT: 00.25 after BEG 50 MPH												
51	30	44		00.25			NO	Y	W	W	2			REAR-END	INATT	DYLGT	DRY	PDO	09-14-2020	
(51) MUSKOGEE				(30) MUSKOGEE	HWY: US-64, PEAK BLVD			AT: 24 ST.												
51	30	44		00.50	24 ST.		YES	Y	S	E	2	1		RIGHT-ANGLE	F-YIELD	DYLGT	WET	N-I INJ	01-13-2017	
51	30	44		00.50	24 ST.		YES	Y	N	-	1	1		OTH-SINGLE-VEH	NO-IMP-ACT	DYLGT	DRY	N-I INJ	01-25-2017	
51	30	44		00.50	24 ST.		YES	Y	W	W	2	1		RIGHT-ANGLE	F-YIELD	DYLGT	WET	P INJ	05-22-2017	
51	30	44		00.50	24 ST.		YES	Y	S	S	2			REAR-END	FOL-CLOSE	DYLGT	DRY	PDO	07-21-2017	
51	30	44		00.50	24 ST.		YES	Y	S	W	3			RIGHT-ANGLE	F-YIELD	DYLGT	DRY	PDO	10-12-2017	
51	30	44		00.50	24 ST.		YES	Y	E	E	2			ANGLE-TURNING	IMP-TURN	DYLGT	DRY	PDO	11-10-2017	
51	30	44		00.50	24 ST.		YES	Y	S	E	2	2		RIGHT-ANGLE	F-YIELD	DYLGT	DRY	P INJ	08-09-2018	
51	30	44		00.50	24 ST.		YES	Y	N	W	2	2		RIGHT-ANGLE	F-YIELD	DARK	DRY	P INJ	10-04-2018	
51	30	44		00.50	24 ST.		YES	Y	S	E	2	1		RIGHT-ANGLE	F-YIELD	DARK	DRY	SS INJ	11-17-2018	
51	30	44		00.50	24 ST.		YES	Y	S	E	2	3		ANGLE-TURNING	UNSAF-SPD	DARK	WET	P INJ	12-30-2018	
51	30	44		00.50	24 ST.		YES	Y	S	E	2	3		RIGHT-ANGLE	F-YIELD	DYLGT	DRY	N-I INJ	04-30-2019	
51	30	44		00.50	24 ST.		YES	Y	S	S	2			ANGLE-TURNING	OTHER	DYLGT	DRY	PDO	08-01-2019	
51	30	44		00.50	24 ST.		YES	Y	S	W	2	2		RIGHT-ANGLE	F-YIELD	DYLGT	DRY	N-I INJ	05-07-2020	
51	30	44		00.50	24 ST.		YES	Y	W	-	1			OTHER	INATT	DARK	DRY	PDO	09-06-2020	
51	30	44		00.50	24 ST.		YES	Y	W	-	1	1		ROLLOVER	NO-IMP-ACT	DYLGT	DRY	N-I INJ	09-09-2021	
51	30	44		00.50	24 ST.		YES	Y	N	W	2	2		RIGHT-ANGLE	F-YIELD	DARK	DRY	N-I INJ	09-25-2021	
51	30	44		00.50	24 ST.		YES	Y	S	E	2			ANGLE-TURNING	F-YIELD	DYLGT	DRY	PDO	10-05-2021	
(51) MUSKOGEE				(30) MUSKOGEE	HWY: US-64, PEAK BLVD			AT: 00.06 after 24 ST.												
51	30	44		00.56		LEFT CENTER	NO	Y	E	-	1			F-O TRAFF-SIGN	UNSAF-SPD	DYLGT	SLUSH	PDO	02-05-2020	
(51) MUSKOGEE				(30) MUSKOGEE	HWY: US-64, PEAK BLVD			AT: BR.												
51	30	44		00.65	BR.	BRIDGE	NO	Y	W	W	2	2		REAR-END	NO-IMP-ACT	DYLGT	DRY	P INJ	12-06-2021	
(51) MUSKOGEE				(30) MUSKOGEE	HWY: US-64, PEAK BLVD			AT: 00.13 after MKT RR #413618E												

* INCLUDES SUSPECTED SERIOUS, NON-INCAPACITATING, AND POSSIBLE INJURIES.



HIGHWAY SYSTEM COLLISION LISTING

Date Range: 01-01-2017 Thru 12-18-2024

Program Provided by:
 Traffic Engineering Division
 Collision Analysis and Safety Branch
 (405) 522-0985
 Created: 12/18/2024 by Stephen Waldrop

				HIGHWAY COLLISIONS			CITY STREET COLLISIONS			COUNTY ROAD COLLISIONS					TOTAL COLLISIONS					
Cnty	City	CS #	Int. #	Mile Post	Location	Features	Int. Related	On Map	Dir. 1	Dir. 2	# Veh.	# Inj.*	# Fat.	Type of Collision	Unsafe Unlawful	Lighting Cond.	Roadway Cond.	Severity	Date	
51	30	44		00.88			NO	Y	E	-	1	1		OTHER	SLEEPY	DARK	DRY	P INJ	06-27-2017	
(51) MUSKOGEE				(30) MUSKOGEE HWY: US-64, PEAK BLVD			AT: 00.04 before *6*													
51	30	44		01.00			NO	Y	E	E	2			REAR-END	IMP-BACK	DYLGT	DRY	PDO	09-11-2020	
(51) MUSKOGEE				(30) MUSKOGEE HWY: US-62, SHAWNEE BYPASS			AT: 00.01 after 32 ST.													
51	30	47		00.01			NO	Y	W	E	2			SIDESWIPE-OPP	INATT	DYLGT	DRY	PDO	06-22-2021	
(51) MUSKOGEE				(30) MUSKOGEE HWY: US-62, SHAWNEE BYPASS			AT: 00.05 after 32 ST.													
51	30	47		00.05			NO	Y	W	W	2			REAR-END	FOL-CLOSE	DUSK	DRY	PDO	12-22-2020	
(51) MUSKOGEE				(30) MUSKOGEE HWY: US-62, SHAWNEE BYPASS			AT: AZALEA DR.													
51	30	47		00.10	AZALEA DR.		YES	Y	W	E	2			ANGLE-TURNING	F-YIELD	DYLGT	DRY	PDO	08-17-2020	
(51) MUSKOGEE				(30) MUSKOGEE HWY: US-62, SHAWNEE BYPASS			AT: 00.07 after AZALEA DR.													
51	30	47		00.17			NO	Y	W	E	2	1		REAR-END	INATT	DYLGT	DRY	N-I INJ	09-18-2020	
(51) MUSKOGEE				(30) MUSKOGEE HWY: US-62, SHAWNEE BYPASS			AT: 00.15 before 24 ST.													
51	30	47		00.30		DRIVEWAY	NO	Y	E	E	2			ANGLE-TURNING	F-YIELD	DYLGT	DRY	PDO	08-02-2020	
(51) MUSKOGEE				(30) MUSKOGEE HWY: US-62, SHAWNEE BYPASS			AT: 00.01 before 24 ST.													
51	30	47		00.44			NO	Y	W	W	2			SIDESWIPE-SAME	IMP-LN-CHG	DYLGT	DRY	PDO	09-15-2019	
(51) MUSKOGEE				(30) MUSKOGEE HWY: US-62, SHAWNEE BYPASS			AT: 24 ST.													
51	30	47		00.45	24 ST.		YES	Y	E	E	2			REAR-END	FOL-CLOSE	DYLGT	DRY	PDO	03-15-2017	
51	30	47		00.45	24 ST.		YES	Y	E	N	2	2		RIGHT-ANGLE	F-STOP	DYLGT	DRY	N-I INJ	06-27-2017	
51	30	47		00.45	24 ST.		YES	Y	E	W	2			ANGLE-TURNING	OTHER	DARK	DRY	PDO	09-23-2017	
51	30	47		00.45	24 ST.		YES	Y	E	E	2			REAR-END	FOL-CLOSE	DYLGT	DRY	PDO	12-30-2017	
51	30	47		00.45	24 ST.		YES	Y	W	W	2			REAR-END	FOL-CLOSE	DARK	DRY	PDO	02-13-2018	
51	30	47		00.45	24 ST.		YES	Y	N	W	2			RIGHT-ANGLE	F-YIELD	DARK	WET	PDO	12-19-2018	
51	30	47		00.45	24 ST.		YES	Y	W	W	2			REAR-END	FOL-CLOSE	DYLGT	WET	PDO	01-11-2019	
51	30	47		00.45	24 ST.		YES	Y	W	W	2			REAR-END	FOL-CLOSE	DARK	DRY	PDO	02-12-2019	
51	30	47		00.45	24 ST.		YES	Y	N	-	1	1		OTHER	D-W-I	DARK	DRY	P INJ	06-29-2019	
51	30	47		00.45	24 ST.	AT-GR SVC RD	YES	Y	W	S	2			ANGLE-TURNING	F-YIELD	DYLGT	DRY	PDO	07-17-2020	
51	30	47		00.45	24 ST.		YES	Y	S	E	2			ANGLE-TURNING	F-YIELD	DYLGT	DRY	PDO	09-18-2020	
51	30	47		00.45	24 ST.		YES	Y	E	E	2	1		REAR-END	FOL-CLOSE	DYLGT	WET	P INJ	12-14-2020	
51	30	47		00.45	24 ST.		YES	Y	E	N	2	1		RIGHT-ANGLE	F-YIELD	DYLGT	DRY	P INJ	04-13-2021	
51	30	47		00.45	24 ST.		YES	Y	W	N	2	1		RIGHT-ANGLE	F-YIELD	DYLGT	DRY	N-I INJ	11-11-2021	
51	30	47		00.45	24 ST.		YES	Y	E	W	2	2		REAR-END		DYLGT	DRY	P INJ	02-14-2022	
51	30	47		00.45	24 ST.		YES	Y	W	E	2	2		ANGLE-TURNING		DARK	DRY	N-I INJ	04-02-2022	
51	30	47		00.45	24 ST.		YES	Y	W	W	2	1		ANGLE-TURNING		DYLGT	DRY	P INJ	05-12-2023	
51	30	47		00.45	24 ST.		YES	Y	E	W	2	1		ANGLE-TURNING	F-YIELD	DARK	DRY	SS INJ	06-16-2023	
51	30	47		00.45	24 ST.		YES	Y	N	W	2	2		OTHER		DYLGT	DRY	N-I INJ	08-07-2023	
(51) MUSKOGEE				(30) MUSKOGEE HWY: US-62, SHAWNEE BYPASS			AT: 00.05 after 24 ST.													
51	30	47		00.50		DRIVEWAY	NO	Y	S	S	4	1		REAR-END	FOL-CLOSE	DYLGT	DRY	P INJ	03-22-2017	
(51) MUSKOGEE				(30) MUSKOGEE HWY: US-62, SHAWNEE BYPASS			AT: 00.04 after 20 ST.													

* INCLUDES SUSPECTED SERIOUS, NON-INCAPACITATING, AND POSSIBLE INJURIES.



HIGHWAY SYSTEM COLLISION LISTING

Date Range: 01-01-2017 Thru 12-18-2024

Program Provided by:
 Traffic Engineering Division
 Collision Analysis and Safety Branch
 (405) 522-0985
 Created: 12/18/2024 by Stephen Waldrop

USE

				HIGHWAY COLLISIONS			CITY STREET COLLISIONS			COUNTY ROAD COLLISIONS					TOTAL COLLISIONS				
Cnty	City	CS #	Int. #	Mile Post	Location	Features	Int. Related	On Map	Dir. 1	Dir. 2	# Veh.	# Inj.*	# Fat.	Type of Collision	Unsafe Unlawful	Lighting Cond.	Roadway Cond.	Severity	Date
51	30	47		00.84			NO	Y	E	E	2	1		SIDESWIPE-SAME	IMP-PASS	DYLGT	DRY	P INJ	01-19-2018
(51) MUSKOGEE				(30) MUSKOGEE HWY: US-62, SHAWNEE BYPASS			AT: 00.01 before 17 ST.												
51	30	47		00.94			NO	Y	W	W	2			SIDESWIPE-SAME	INATT	DYLGT	DRY	PDO	11-23-2019
(51) MUSKOGEE				(30) MUSKOGEE HWY: US-62, SHAWNEE BYPASS			AT: 17 ST.												
51	30	47		00.95	17 ST.		YES	Y	E	N	2	1		RIGHT-ANGLE	F-YIELD	DYLGT	DRY	P INJ	05-19-2017
51	30	47		00.95	17 ST.		YES	Y	W	N	2	1		RIGHT-ANGLE	F-YIELD	DYLGT	DRY	SS INJ	10-16-2017
51	30	47		00.95	17 ST.		YES	Y	N	E	3			RIGHT-ANGLE	NEG-DRVING	DYLGT	DRY	PDO	05-31-2018
51	30	47		00.95	17 ST.		YES	Y	S	E	2			RIGHT-ANGLE	F-YIELD	DYLGT	DRY	PDO	10-25-2018
51	30	47		00.95	17 ST.		YES	Y	S	E	2	2		RIGHT-ANGLE	F-YIELD	DYLGT	DRY	N-I INJ	11-09-2018
51	30	47		00.95	17 ST.		YES	Y	S	W	2	1		RIGHT-ANGLE	F-YIELD	DARK	WET	N-I INJ	01-16-2019
51	30	47		00.95	17 ST.		YES	Y	S	E	2	3		RIGHT-ANGLE	F-YIELD	DYLGT	DRY	SS INJ	09-17-2019
51	30	47		00.95	17 ST.		YES	Y	S	W	2	2		RIGHT-ANGLE	F-YIELD	DYLGT	WET	N-I INJ	06-07-2021
51	30	47		00.95	17 ST.		YES	Y	S	E	2			ANGLE-TURNING	F-YIELD	DYLGT	DRY	PDO	01-27-2023
(51) MUSKOGEE				(30) MUSKOGEE HWY: US-62, SHAWNEE BYPASS			AT: 00.01 after 17 ST.												
51	30	47		00.96			NO	Y	W	-	2	1		OTHER		DYLGT	DRY	P INJ	05-06-2023
(51) MUSKOGEE				(30) MUSKOGEE HWY: US-62, SHAWNEE BYPASS			AT: 00.01 before WARRIOR AVE.												
51	30	47		01.01			NO	Y	E	-	1	1		ROLLOVER	D-W-I	DYLGT	DRY	N-I INJ	06-05-2017
(51) MUSKOGEE				(30) MUSKOGEE HWY: US-62, SHAWNEE BYPASS			AT: 00.01 after 16 ST.												
51	30	47		01.07			NO	Y	E	E	2			SIDESWIPE-SAME	IMP-LN-CHG	DARK	DRY	PDO	10-16-2021
(51) MUSKOGEE				(30) MUSKOGEE HWY: US-62, SHAWNEE BYPASS			AT: 00.03 before 14 ST.												
51	30	47		01.16		DRIVEWAY	NO	Y	E	E	2	2		REAR-END	INATT	DARK	DRY	N-I INJ	11-28-2017
(51) MUSKOGEE				(30) MUSKOGEE HWY: US-62, SHAWNEE BYPASS			AT: 14 ST.												
51	30	47		01.19	14 ST.		YES	Y	W	-	1			ANIMAL	DEER	DARK	DRY	PDO	10-28-2017
51	30	47		01.19	14 ST.	AT-GR SVC RD	YES	Y	S	E	2			ANGLE-TURNING	F-YIELD	DYLGT	DRY	PDO	11-24-2018
51	30	47		01.19	14 ST.	INCIDENT	YES	Y	W	-	1			OTH-SINGLE-VEH	NO-IMP-ACT	DARK	DRY	PDO	12-13-2018
51	30	47		01.19	14 ST.		YES	Y	S	W	2			RIGHT-ANGLE	F-YIELD	DYLGT	DRY	PDO	05-22-2020
51	30	47		01.19	14 ST.		YES	Y	S	W	2	2		RIGHT-ANGLE	F-YIELD	DYLGT	DRY	N-I INJ	08-18-2023
(51) MUSKOGEE				(30) MUSKOGEE HWY: US-62, SHAWNEE BYPASS			AT: 00.10 after 14 ST.												
51	30	47		01.29			NO	Y	W	W	2	2		REAR-END	INATT	DYLGT	DRY	N-I INJ	11-16-2020
(51) MUSKOGEE				(30) MUSKOGEE HWY: US-62, SHAWNEE BYPASS			AT: 00.10 before 11 ST.												
51	30	47		01.35			NO	Y	E	W	3			REAR-END	FOL-CLOSE	DYLGT	DRY	PDO	06-07-2019
(51) MUSKOGEE				(30) MUSKOGEE HWY: US-62, SHAWNEE BYPASS			AT: 00.08 before 11 ST.												
51	30	47		01.37		SECONDARY	NO	Y	E	E	2			REAR-END	F-YIELD	DYLGT	DRY	PDO	06-04-2019
(51) MUSKOGEE				(30) MUSKOGEE HWY: US-62, SHAWNEE BYPASS			AT: 00.06 before 11 ST.												
51	30	47		01.39			NO	Y	E	E	2	2		REAR-END	FOL-CLOSE	DYLGT	DRY	N-I INJ	06-04-2019
(51) MUSKOGEE				(30) MUSKOGEE HWY: US-62, SHAWNEE BYPASS			AT: 00.01 before 11 ST.												
51	30	47		01.44			NO	Y	E	-	1			ANIMAL	F-YIELD	DARK	DRY	PDO	01-31-2018

* INCLUDES SUSPECTED SERIOUS, NON-INCAPACITATING, AND POSSIBLE INJURIES.



HIGHWAY SYSTEM COLLISION LISTING

Date Range: 01-01-2017 Thru 12-18-2024

Program Provided by:
 Traffic Engineering Division
 Collision Analysis and Safety Branch
 (405) 522-0985
 Created: 12/18/2024 by Stephen Waldrop

USE

				HIGHWAY COLLISIONS			CITY STREET COLLISIONS			COUNTY ROAD COLLISIONS					TOTAL COLLISIONS				
Cnty	City	CS #	Int. #	Mile Post	Location	Features	Int. Related	On Map	Dir. 1	Dir. 2	# Veh.	# Inj.*	# Fat.	Type of Collision	Unsafe Unlawful	Lighting Cond.	Roadway Cond.	Severity	Date
51	30	47		01.44		X-MEDIAN	NO	Y	W	-	1			F-O UTIL-POLE	D-W-I	DARK	DRY	PDO	02-03-2019
51	30	47		01.44		DRIVEWAY	NO	Y	E	N	2	1		ANGLE-TURNING	F-YIELD	DARK	DRY	P INJ	11-19-2019
(51) MUSKOGEE				(30) MUSKOGEE			HWY: US-62, SHAWNEE BYPASS					AT: 11 ST.							
51	30	47		01.45	11 ST.		YES	Y	E	E	2			REAR-END	INATT	DARK	DRY	PDO	02-07-2017
51	30	47		01.45	11 ST.		YES	Y	W	W	2			REAR-END	FOL-CLOSE	DYLGT	DRY	PDO	02-09-2017
51	30	47		01.45	11 ST.		YES	Y	N	W	2			OTH-BACKING	OTHER	DARK	DRY	PDO	03-01-2017
51	30	47		01.45	11 ST.		YES	Y	W	W	3	1		REAR-END	INATT	DYLGT	DRY	N-I INJ	03-02-2017
51	30	47		01.45	11 ST.		YES	Y	W	W	2			REAR-END	FOL-CLOSE	DYLGT	DRY	PDO	04-02-2017
51	30	47		01.45	11 ST.		YES	Y	E	E	2			REAR-END	FOL-CLOSE	DYLGT	DRY	PDO	05-19-2017
51	30	47		01.45	11 ST.		YES	Y	E	N	2	3		ANGLE-TURNING	F-STOP	DYLGT	DRY	P INJ	06-29-2017
51	30	47		01.45	11 ST.		YES	Y	E	N	2			RIGHT-ANGLE	NO-IMP-ACT	DYLGT	DRY	PDO	07-24-2017
51	30	47		01.45	11 ST.		YES	Y	E	S	2	2		RIGHT-ANGLE	F-YIELD	DYLGT	DRY	P INJ	09-10-2017
51	30	47		01.45	11 ST.		YES	Y	E	S	2	1		ANGLE-TURNING	F-STOP	DYLGT	DRY	N-I INJ	09-21-2017
51	30	47		01.45	11 ST.		YES	Y	E	-	1			OTHER	IMP-TURN	DYLGT	DRY	PDO	10-15-2017
51	30	47		01.45	11 ST.		YES	Y	N	N	2			ANGLE-TURNING	FOL-CLOSE	DYLGT	DRY	PDO	10-19-2017
51	30	47		01.45	11 ST.		YES	Y	E	E	3	1		SIDESWIPE-SAME	D-W-I	DARK	DRY	P INJ	12-29-2017
51	30	47		01.45	11 ST.		YES	Y	W	W	2			ANGLE-TURNING	NEG-DRVING	DYLGT	DRY	PDO	01-13-2018
51	30	47		01.45	11 ST.	AT-GR SVC RD	YES	Y	W	W	2			OTHER	IMP-TURN	DYLGT	DRY	PDO	04-05-2018
51	30	47		01.45	11 ST.		YES	Y	W	W	2			REAR-END	FOL-CLOSE	DYLGT	DRY	PDO	05-21-2018
51	30	47		01.45	11 ST.		YES	Y	W	W	2			REAR-END	FOL-CLOSE	DYLGT	DRY	PDO	06-19-2018
51	30	47		01.45	11 ST.		YES	Y	N	N	2			REAR-END	IMP-START	DYLGT	DRY	PDO	07-07-2018
51	30	47		01.45	11 ST.		YES	Y	E	S	2			RIGHT-ANGLE	F-STOP	DYLGT	DRY	PDO	07-17-2018
51	30	47		01.45	11 ST.		YES	Y	W	W	4	1		REAR-END	FOL-CLOSE	DYLGT	DRY	P INJ	10-08-2018
51	30	47		01.45	11 ST.		YES	Y	S	S	2			REAR-END	IMP-PASS	DARK	DRY	PDO	10-27-2018
51	30	47		01.45	11 ST.		YES	Y	E	S	2	1		RIGHT-ANGLE	F-STOP	DARK	DRY	P INJ	11-27-2018
51	30	47		01.45	11 ST.		YES	Y	W	S	2			RIGHT-ANGLE	F-STOP	DYLGT	DRY	PDO	03-30-2019
51	30	47		01.45	11 ST.		YES	Y	W	W	2			REAR-END	FOL-CLOSE	DYLGT	DRY	PDO	04-15-2019
51	30	47		01.45	11 ST.		YES	Y	W	W	3			SIDESWIPE-SAME	INATT	DYLGT	DRY	PDO	05-22-2019
51	30	47		01.45	11 ST.		YES	Y	E		2			REAR-END	UNSAF-SPD	DYLGT	DRY	PDO	06-15-2019
51	30	47		01.45	11 ST.		YES	Y	E		3			REAR-END	FOL-CLOSE	DYLGT	DRY	PDO	06-27-2019
51	30	47		01.45	11 ST.		YES	Y	E	E	2	1		REAR-END	D-W-I	DARK	DRY	P INJ	09-20-2019
51	30	47		01.45	11 ST.		YES	Y	E	-	1			F-O TRAFF-SIGN	NEG-DRVING	DYLGT	DRY	PDO	01-08-2020
51	30	47		01.45	11 ST.		YES	Y	N	W	2			RIGHT-ANGLE	OTHER	DYLGT	WET	PDO	02-05-2020
51	30	47		01.45	11 ST.	WKZONE	YES	Y	E	E	2			REAR-END	FOL-CLOSE	DYLGT	DRY	PDO	02-17-2020
51	30	47		01.45	11 ST.	WKZONE	YES	Y	E	E	3			REAR-END	FOL-CLOSE	DARK	DRY	PDO	02-22-2020
51	30	47		01.45	11 ST.		YES	Y	W	W	2			ANGLE-TURNING	IMP-PASS	DARK	DRY	PDO	09-25-2020
51	30	47		01.45	11 ST.		YES	Y	E	E	2	1		REAR-END	FOL-CLOSE	DARK	DRY	N-I INJ	11-08-2020

* INCLUDES SUSPECTED SERIOUS, NON-INCAPACITATING, AND POSSIBLE INJURIES.



HIGHWAY SYSTEM COLLISION LISTING

Date Range: 01-01-2017 Thru 12-18-2024

Program Provided by:
 Traffic Engineering Division
 Collision Analysis and Safety Branch
 (405) 522-0985
 Created: 12/18/2024 by Stephen Waldrop

USE

				HIGHWAY COLLISIONS			CITY STREET COLLISIONS			COUNTY ROAD COLLISIONS				TOTAL COLLISIONS						
Cnty	City	CS #	Int. #	Mile Post	Location	Features	Int. Related	On Map	Dir. 1	Dir. 2	# Veh.	# Inj.*	# Fat.	Type of Collision	Unsafe Unlawful	Lighting Cond.	Roadway Cond.	Severity	Date	
51	30	47		01.45	11 ST.	AT-GR SVC RD	YES	Y	S	S	2			REAR-END	FOL-CLOSE	DARK	DRY	PDO	12-04-2020	
51	30	47		01.45	11 ST.		YES	Y	E	E	2			REAR-END	FOL-CLOSE	DYLGT	DRY	PDO	12-21-2020	
51	30	47		01.45	11 ST.		YES	Y	S	S	2	2		RIGHT-ANGLE	F-YIELD	DYLGT	DRY	N-I INJ	01-05-2021	
51	30	47		01.45	11 ST.		YES	Y	W	W	2	2		REAR-END	FOL-CLOSE	DARK	DRY	P INJ	02-01-2021	
51	30	47		01.45	11 ST.		YES	Y	W	W	2	1		REAR-END	FOL-CLOSE	DYLGT	DRY	N-I INJ	04-04-2021	
51	30	47		01.45	11 ST.		YES	Y	W	W	2			REAR-END	IMP-PASS	DYLGT	DRY	PDO	04-07-2021	
51	30	47		01.45	11 ST.	DRIVEWAY	YES	Y	N	N	2			ANGLE-TURNING	IMP-PASS	DYLGT	DRY	PDO	06-08-2021	
51	30	47		01.45	11 ST.		YES	Y	E	N	2			RIGHT-ANGLE	F-YIELD	DYLGT	DRY	PDO	06-14-2021	
51	30	47		01.45	11 ST.		YES	Y	E	W	2			ANGLE-TURNING	F-YIELD	DYLGT	WET	PDO	10-28-2021	
51	30	47		01.45	11 ST.		YES	Y	W	W	2			ANGLE-TURNING	NEG-DRVING	DYLGT	DRY	PDO	11-01-2021	
51	30	47		01.45	11 ST.		YES	Y	N	N	2			ANGLE-TURNING	F-YIELD	DARK	DRY	PDO	11-04-2021	
51	30	47		01.45	11 ST.		YES	Y	N	N	2			OTH-BACKING	IMP-BACK	DYLGT	DRY	PDO	11-05-2021	
51	30	47		01.45	11 ST.		YES	Y	W	N	2	5		RIGHT-ANGLE		DYLGT	DRY	P INJ	02-20-2022	
51	30	47		01.45	11 ST.		YES	Y	E	E	2	3		REAR-END	FOL-CLOSE	DYLGT	WET	N-I INJ	03-30-2022	
51	30	47		01.45	11 ST.		YES	Y	N	E	3	1		RIGHT-ANGLE	F-STOP	DYLGT	DRY	N-I INJ	11-04-2022	
51	30	47		01.45	11 ST.		YES	Y	W	N	2	1		OTHER	F-STOP	DARK	DRY	N-I INJ	12-01-2022	
51	30	47		01.45	11 ST.		YES	Y	W	W	2			ANGLE-TURNING	IMP-TURN	DYLGT	WET	PDO	02-03-2023	
51	30	47		01.45	11 ST.		YES	Y	E	E	2	1		REAR-END	FOL-CLOSE	DYLGT	DRY	P INJ	06-14-2023	
51	30	47		01.45	11 ST.		YES	Y	W	N	2	4		RIGHT-ANGLE	F-STOP	DYLGT	DRY	SS INJ	12-10-2023	
(51) MUSKOGEE				(30) MUSKOGEE	HWY: US-62, SHAWNEE BYPASS		AT: 00.05 after 11 ST.													
51	30	47		01.50		DRIVEWAY	NO	Y	E	E	2	1		REAR-END	FOL-CLOSE	DYLGT	DRY	P INJ	03-30-2022	
(51) MUSKOGEE				(30) MUSKOGEE	HWY: US-62, SHAWNEE BYPASS		AT: 00.06 after 11 ST.													
51	30	47		01.51			NO	Y	W	E	4	3		REAR-END	WRNG-WAY	DYLGT	DRY	N-I INJ	03-10-2020	
51	30	47		01.51		DRIVEWAY	NO	Y	W	W	2			ANGLE-TURNING	F-YIELD	DYLGT	DRY	PDO	08-24-2021	
(51) MUSKOGEE				(30) MUSKOGEE	HWY: US-62, SHAWNEE BYPASS		AT: 00.09 after 11 ST.													
51	30	47		01.54			NO	Y	E	-	1		1	OTH-SINGLE-VEH	INATT	DARK	DRY	FAT	06-27-2023	
(51) MUSKOGEE				(30) MUSKOGEE	HWY: US-62, SHAWNEE BYPASS		AT: 00.13 before 6 ST.													
51	30	47		01.59			NO	Y	W	W	2	1		REAR-END	FOL-CLOSE	DYLGT	DRY	P INJ	11-05-2018	
(51) MUSKOGEE				(30) MUSKOGEE	HWY: US-62, SHAWNEE BYPASS		AT: 00.10 before 6 ST.													
51	30	47		01.62		DRIVEWAY	NO	Y	E	E	3	2		RIGHT-ANGLE		DYLGT	DRY	P INJ	04-18-2023	
(51) MUSKOGEE				(30) MUSKOGEE	HWY: US-62, SHAWNEE BYPASS		AT: 00.08 before 6 ST.													
51	30	47		01.64		DRIVEWAY	NO	Y	E	E	2	1		ANGLE-TURNING	F-YIELD	DARK	DRY	P INJ	12-12-2019	
51	30	47		01.64			NO	Y	E	E	2			REAR-END	INATT	DYLGT	DRY	PDO	12-24-2020	
(51) MUSKOGEE				(30) MUSKOGEE	HWY: US-62		AT: 00.07 before 6 ST.													
51	30	47		01.65			NO	Y	E	E	2			REAR-END	FOL-CLOSE	DYLGT	DRY	PDO	08-18-2021	
(51) MUSKOGEE				(30) MUSKOGEE	HWY: US-62, SHAWNEE BYPASS		AT: 00.06 before 6 ST.													
51	30	47		01.66		DRIVEWAY	NO	Y	E	E	2			ANGLE-TURNING	F-YIELD	DYLGT	DRY	PDO	06-23-2022	
(51) MUSKOGEE				(30) MUSKOGEE	HWY: US-62, SHAWNEE BYPASS		AT: 00.05 before 6 ST.													

* INCLUDES SUSPECTED SERIOUS, NON-INCAPACITATING, AND POSSIBLE INJURIES.



HIGHWAY SYSTEM COLLISION LISTING

Date Range: 01-01-2017 Thru 12-18-2024

Program Provided by:
 Traffic Engineering Division
 Collision Analysis and Safety Branch
 (405) 522-0985
 Created: 12/18/2024 by Stephen Waldrop

				HIGHWAY COLLISIONS			CITY STREET COLLISIONS			COUNTY ROAD COLLISIONS					TOTAL COLLISIONS				
Cnty	City	CS #	Int. #	Mile Post	Location	Features	Int. Related	On Map	Dir. 1	Dir. 2	# Veh.	# Inj.*	# Fat.	Type of Collision	Unsafe Unlawful	Lighting Cond.	Roadway Cond.	Severity	Date
51	30	47		01.67		DRIVEWAY	NO	Y	S	E	2			ANGLE-TURNING	F-YIELD	DARK	DRY	PDO	05-20-2021
(51) MUSKOGEE				(30) MUSKOGEE HWY: US-62, SHAWNEE BYPASS			AT: 00.04 before 6 ST.												
51	30	47		01.68		TRAFFIC BACKUP	NO	Y	E	E	2			REAR-END	INATT	DYLGT	DRY	PDO	07-03-2019
(51) MUSKOGEE				(30) MUSKOGEE HWY: US-62, SHAWNEE BYPASS			AT: 00.03 before 6 ST.												
51	30	47		01.69		DRIVEWAY	NO	Y	E	W	2	1		ANGLE-TURNING	F-YIELD	DARK	DRY	P INJ	11-11-2021
(51) MUSKOGEE				(30) MUSKOGEE HWY: US-62, SHAWNEE BYPASS			AT: 00.01 before 6 ST.												
51	30	47		01.71			NO	Y	E	E	2			SIDESWIPE-SAME	OTHER	DYLGT	WET	PDO	09-22-2019
(51) MUSKOGEE				(30) MUSKOGEE HWY: US-62, SHAWNEE BYPASS			AT: 6 ST.												
51	30	47		01.72	6 ST.		YES	Y	E	E	2	3		REAR-END	FOL-CLOSE	DYLGT	DRY	P INJ	01-16-2017
51	30	47		01.72	6 ST.		YES	Y	S	-	1			F-O TREE	INATT	DYLGT	DRY	PDO	02-02-2017
51	30	47		01.72	6 ST.		YES	Y	W	S	2	1		ANGLE-TURNING	DEF-VEH	DARK	DRY	P INJ	02-19-2017
51	30	47		01.72	6 ST.		YES	Y	W	W	2			REAR-END	FOL-CLOSE	DYLGT	DRY	PDO	02-23-2017
51	30	47		01.72	6 ST.		YES	Y	E	S	2	1		RIGHT-ANGLE	INATT	DYLGT	DRY	N-I INJ	03-09-2017
51	30	47		01.72	6 ST.		YES	Y	W	W	2			REAR-END	FOL-CLOSE	DYLGT	DRY	PDO	03-29-2017
51	30	47		01.72	6 ST.		YES	Y	E	E	2			REAR-END	FOL-CLOSE	DYLGT	DRY	PDO	04-02-2017
51	30	47		01.72	6 ST.		YES	Y	E	S	2			RIGHT-ANGLE	F-YIELD	DYLGT	DRY	PDO	05-04-2017
51	30	47		01.72	6 ST.		YES	Y	W	W	2			REAR-END	FOL-CLOSE	DYLGT	DRY	PDO	05-19-2017
51	30	47		01.72	6 ST.		YES	Y	E	E	2	1		REAR-END	FOL-CLOSE	DYLGT	DRY	P INJ	05-25-2017
51	30	47		01.72	6 ST.		YES	Y	W	W	3	1		REAR-END	FOL-CLOSE	DYLGT	DRY	N-I INJ	06-05-2017
51	30	47		01.72	6 ST.		YES	Y	N	E	2			ANGLE-TURNING	IMP-TURN	DYLGT	DRY	PDO	06-09-2017
51	30	47		01.72	6 ST.		YES	Y	W	W	2	6		REAR-END	IMP-START	DYLGT	DRY	P INJ	08-30-2017
51	30	47		01.72	6 ST.		YES	Y	E	E	2	2		REAR-END	INATT	DARK	DRY	P INJ	09-08-2017
51	30	47		01.72	6 ST.		YES	Y	S	S	2	1		REAR-END	IMP-TURN	Other	DRY	P INJ	10-09-2017
51	30	47		01.72	6 ST.		YES	Y	W	N	2			RIGHT-ANGLE	F-YIELD	DYLGT	DRY	PDO	10-12-2017
51	30	47		01.72	6 ST.		YES	Y	N	N	2			ANGLE-TURNING	NEG-DRVING	DYLGT	DRY	PDO	11-30-2017
51	30	47		01.72	6 ST.		YES	Y	W	W	2	1		REAR-END	FOL-CLOSE	DYLGT	DRY	N-I INJ	02-19-2018
51	30	47		01.72	6 ST.		YES	Y	W	W	3	6		REAR-END	UNSAF-SPD	DARK	DRY	SS INJ	03-16-2018
51	30	47		01.72	6 ST.		YES	Y	W	W	2			REAR-END	FOL-CLOSE	DYLGT	DRY	PDO	05-17-2018
51	30	47		01.72	6 ST.		YES	Y	E	E	2			REAR-END	FOL-CLOSE	DYLGT	DRY	PDO	06-22-2018
51	30	47		01.72	6 ST.		YES	Y	N	N	2			REAR-END	FOL-CLOSE	DYLGT	DRY	PDO	09-11-2018
51	30	47		01.72	6 ST.		YES	Y	N	E	2			RIGHT-ANGLE	F-YIELD	DARK	WET	PDO	10-13-2018
51	30	47		01.72	6 ST.		YES	Y	E	E	2			REAR-END	FOL-CLOSE	DYLGT	DRY	PDO	10-17-2018
51	30	47		01.72	6 ST.		YES	Y	E	E	2			REAR-END	FOL-CLOSE	DARK	WET	PDO	10-25-2018
51	30	47		01.72	6 ST.		YES	Y	W	W	2			REAR-END	FOL-CLOSE	DYLGT	DRY	PDO	11-02-2018
51	30	47		01.72	6 ST.		YES	Y	E	E	2	4		REAR-END	FOL-CLOSE	DARK	DRY	P INJ	12-02-2018
51	30	47		01.72	6 ST.		YES	Y	E	N	2			ANGLE-TURNING	F-YIELD	DARK	WET	PDO	12-19-2018
51	30	47		01.72	6 ST.		YES	Y	E	E	2			REAR-END	FOL-CLOSE	DARK	DRY	PDO	12-28-2018

* INCLUDES SUSPECTED SERIOUS, NON-INCAPACITATING, AND POSSIBLE INJURIES.



HIGHWAY SYSTEM COLLISION LISTING

Date Range: 01-01-2017 Thru 12-18-2024

Program Provided by:
 Traffic Engineering Division
 Collision Analysis and Safety Branch
 (405) 522-0985
 Created: 12/18/2024 by Stephen Waldrop

USE

23

				HIGHWAY COLLISIONS		CITY STREET COLLISIONS		COUNTY ROAD COLLISIONS					TOTAL COLLISIONS						
Cnty	City	CS #	Int. #	Mile Post	Location	Features	Int. Related	On Map	Dir. 1	Dir. 2	# Veh.	# Inj.*	# Fat.	Type of Collision	Unsafe Unlawful	Lighting Cond.	Roadway Cond.	Severity	Date
51	30	47		01.72	6 ST.	AT-GR SVC RD	YES	Y	S	S	2			ANGLE-TURNING	F-YIELD	DYLGT	DRY	PDO	01-30-2019
51	30	47		01.72	6 ST.		YES	Y	W	N	2			RIGHT-ANGLE	OTHER	DYLGT	OTHER	PDO	04-14-2019
51	30	47		01.72	6 ST.		YES	Y	S	W	2			RIGHT-ANGLE	F-YIELD	DYLGT	DRY	PDO	04-26-2019
51	30	47		01.72	6 ST.		YES	Y	E	N	2	2		RIGHT-ANGLE	F-YIELD	DYLGT	DRY	SS INJ	04-29-2019
51	30	47		01.72	6 ST.		YES	Y	W	W	2			REAR-END	INATT	DYLGT	WET	PDO	05-14-2019
51	30	47		01.72	6 ST.		YES	Y	E	E	2			REAR-END	FOL-CLOSE	DYLGT	DRY	PDO	07-04-2019
51	30	47		01.72	6 ST.		YES	Y	W	W	2	1		REAR-END	FOL-CLOSE	DYLGT	DRY	P INJ	08-05-2019
51	30	47		01.72	6 ST.		YES	Y	S	N	2			ANGLE-TURNING	F-YIELD	DYLGT	DRY	PDO	09-06-2019
51	30	47		01.72	6 ST.		YES	Y	E	E	2			OTH-BACKING	IMP-BACK	DARK	WET	PDO	10-30-2019
51	30	47		01.72	6 ST.		YES	Y	S	W	2	1		RIGHT-ANGLE	F-YIELD	DYLGT	DRY	P INJ	11-09-2019
51	30	47		01.72	6 ST.		YES	Y	S	S	2			REAR-END	FOL-CLOSE	DYLGT	WET	PDO	12-28-2019
51	30	47		01.72	6 ST.		YES	Y	E	E	2			REAR-END	FOL-CLOSE	DUSK	DRY	PDO	01-06-2020
51	30	47		01.72	6 ST.		YES	Y	E	E	2	1		REAR-END	OTHER	DYLGT	WET	P INJ	02-23-2020
51	30	47		01.72	6 ST.		YES	Y	S	-	1			ANGLE-TURNING	F-YIELD	DUSK	DRY	PDO	03-10-2020
51	30	47		01.72	6 ST.		YES	Y	W	W	2			REAR-END	F-STOP	DYLGT	DRY	PDO	06-07-2020
51	30	47		01.72	6 ST.		YES	Y	W	W	2			REAR-END	FOL-CLOSE	DYLGT	DRY	PDO	08-17-2020
51	30	47		01.72	6 ST.		YES	Y	E	S	2	1		RIGHT-ANGLE	F-STOP	DYLGT	DRY	N-I INJ	10-17-2020
51	30	47		01.72	6 ST.		YES	Y	W	W	3			REAR-END	FOL-CLOSE	DYLGT	SNOW	PDO	12-13-2020
51	30	47		01.72	6 ST.		YES	Y	W	W	2			REAR-END	FOL-CLOSE	DYLGT	SNOW	PDO	12-13-2020
51	30	47		01.72	6 ST.		YES	Y	S	S	2			REAR-END	FOL-CLOSE	DYLGT	DRY	PDO	03-23-2021
51	30	47		01.72	6 ST.	DRIVEWAY	YES	Y	E	N	2	2		RIGHT-ANGLE	F-YIELD	DYLGT	DRY	P INJ	04-02-2021
51	30	47		01.72	6 ST.		YES	Y	W	W	2	1		REAR-END	FOL-CLOSE	DYLGT	DRY	P INJ	08-05-2021
51	30	47		01.72	6 ST.		YES	Y	E	E	2			ANGLE-TURNING	F-YIELD	DYLGT	DRY	PDO	10-10-2021
51	30	47		01.72	6 ST.		YES	Y	E	E	3			REAR-END	D-W-I	DARK	DRY	PDO	10-29-2021
51	30	47		01.72	6 ST.		YES	Y	E	N	2			RIGHT-ANGLE	F-YIELD	DARK	DRY	PDO	11-23-2021
51	30	47		01.72	6 ST.		YES	Y	W	W	2	2		OTHER	IMP-LN-CHG	DARK	WET	P INJ	12-17-2021
51	30	47		01.72	6 ST.		YES	Y	N	E	3	3		RIGHT-ANGLE	F-STOP	DYLGT	DRY	N-I INJ	03-04-2022
51	30	47		01.72	6 ST.		YES	Y	W	W	2			REAR-END	FOL-CLOSE	DYLGT	DRY	PDO	04-05-2022
51	30	47		01.72	6 ST.		YES	Y	W	W	2	1		REAR-END	FOL-CLOSE	DYLGT	WET	P INJ	04-28-2022
51	30	47		01.72	6 ST.		YES	Y	N	S	2	1		OTHER	IMP-TURN	DYLGT	WET	P INJ	05-23-2022
51	30	47		01.72	6 ST.		YES	Y	W	W	2	1		REAR-END	FOL-CLOSE	DYLGT	DRY	N-I INJ	01-01-2023
51	30	47		01.72	6 ST.		YES	Y	S	N	2	2		OTHER	F-YIELD	DYLGT	DRY	P INJ	07-29-2023
51	30	47		01.72	6 ST.		YES	Y	W	S	2	2		RIGHT-ANGLE		DYLGT	DRY	N-I INJ	10-12-2023
51	30	47		01.72	6 ST.		YES	Y	E	E	3	2		REAR-END	FOL-CLOSE	DARK	DRY	P INJ	12-11-2023
(51) MUSKOGEE				(30) MUSKOGEE		HWY: US-62, SHAWNEE BYPASS		AT: 00.01 after 6 ST.											
51	30	47		01.73			NO	Y	E	E	2			REAR-END	FOL-CLOSE	DYLGT	DRY	PDO	10-09-2017
51	30	47		01.73		DRIVEWAY	NO	Y	E	W	2	1		ANGLE-TURNING	F-YIELD	DYLGT	DRY	N-I INJ	06-13-2018
(51) MUSKOGEE				(30) MUSKOGEE		HWY: US-62, SHAWNEE BYPASS		AT: 00.02 after 6 ST.											

* INCLUDES SUSPECTED SERIOUS, NON-INCAPACITATING, AND POSSIBLE INJURIES.



HIGHWAY SYSTEM COLLISION LISTING

Date Range: 01-01-2017 Thru 12-18-2024

Program Provided by:
 Traffic Engineering Division
 Collision Analysis and Safety Branch
 (405) 522-0985
 Created: 12/18/2024 by Stephen Waldrop

				HIGHWAY COLLISIONS			CITY STREET COLLISIONS			COUNTY ROAD COLLISIONS					TOTAL COLLISIONS				
Cnty	City	CS #	Int. #	Mile Post	Location	Features	Int. Related	On Map	Dir. 1	Dir. 2	# Veh.	# Inj.*	# Fat.	Type of Collision	Unsafe Unlawful	Lighting Cond.	Roadway Cond.	Severity	Date
51	30	47		01.74			NO	Y	E	E	2	1		REAR-END	INATT	DARK	DRY	P INJ	09-08-2017
(51) MUSKOGEE				(30) MUSKOGEE HWY: US-62, SHAWNEE BYPASS			AT: 5 ST.												
51	30	47		01.77	5 ST.		YES	Y	N	E	2			RIGHT-ANGLE	F-YIELD	DYLGT	DRY	PDO	04-24-2019
(51) MUSKOGEE				(30) MUSKOGEE HWY: US-62, SHAWNEE BYPASS			AT: 00.01 after 5 ST.												
51	30	47		01.78			NO	Y	W	W	2			SIDESWIPE-SAME	OTHER	DYLGT	DRY	PDO	09-05-2017
(51) MUSKOGEE				(30) MUSKOGEE HWY: US-62, SHAWNEE BYPASS			AT: 00.02 after 5 ST.												
51	30	47		01.79			NO	Y	W	-	1	1		PEDESTRIAN	NO-IMP-ACT	DYLGT	DRY	N-I INJ	09-24-2020
(51) MUSKOGEE				(30) MUSKOGEE HWY: US-62, SHAWNEE BYPASS			AT: 00.01 before FAIRMOUNT ST.												
51	30	47		01.81			NO	Y	W	W	2			REAR-END	INATT	DYLGT	DRY	PDO	02-03-2017
(51) MUSKOGEE				(30) MUSKOGEE HWY: US-62, SHAWNEE BYPASS			AT: 00.03 after FAIRMOUNT ST.												
51	30	47		01.85			NO	Y	E	W	2	2		OTHER	L-CENTER	DYLGT	DRY	N-I INJ	03-26-2021
(51) MUSKOGEE				(30) MUSKOGEE HWY: US-62, SHAWNEE BYPASS			AT: 00.03 before CARROLL ST.												
51	30	47		01.86		WKZONE	NO	Y	E	E	2			REAR-END	FOL-CLOSE	DYLGT	DRY	PDO	02-22-2020
(51) MUSKOGEE				(30) MUSKOGEE HWY: US-62, SHAWNEE BYPASS			AT: SPRUCE ST.												
51	30	47		01.96	SPRUCE ST.		YES	Y	S	W	2			ANGLE-TURNING	F-YIELD	DARK	WET	PDO	10-31-2018
51	30	47		01.96	SPRUCE ST.		YES	Y	E	E	2	2		REAR-END	FOL-CLOSE	DYLGT	DRY	P INJ	03-28-2022
(51) MUSKOGEE				(30) MUSKOGEE HWY: US-62, SHAWNEE BYPASS			AT: 00.01 before BR.												
51	30	47		02.07			NO	Y	W	W	3			REAR-END	INATT	DYLGT	DRY	PDO	09-24-2020
51	30	47		02.07			NO	Y	E	-	1	1		F-O POLE-OTHER	UNSAF-SPD	DARK	WET	P INJ	03-12-2021
51	30	47		02.07			NO	Y	E	E	2			SIDESWIPE-SAME	F-YIELD	DYLGT	WET	PDO	04-28-2021
(51) MUSKOGEE				(30) MUSKOGEE HWY: US-62, SHAWNEE BYPASS			AT: CHICAGO AVE.												
51	30	47		02.09	CHICAGO AVE.		YES	Y	E	-	1			F-O TRAFF-SIGNAL	INATT	DYLGT	DRY	PDO	05-31-2017
51	30	47		02.09	CHICAGO AVE.		YES	Y	W	W	2			REAR-END	FOL-CLOSE	DYLGT	DRY	PDO	06-08-2017
51	30	47		02.09	CHICAGO AVE.		YES	Y	W	S	2			RIGHT-ANGLE	F-YIELD	DYLGT	DRY	PDO	08-06-2017
51	30	47		02.09	CHICAGO AVE.		YES	Y	W	W	2			REAR-END	FOL-CLOSE	DYLGT	DRY	PDO	08-29-2017
51	30	47		02.09	CHICAGO AVE.		YES	Y	W	N	2	1		ANGLE-TURNING	OTHER	DYLGT	WET	N-I INJ	10-04-2017
51	30	47		02.09	CHICAGO AVE.		YES	Y	E	E	2			REAR-END	FOL-CLOSE	DYLGT	DRY	PDO	10-24-2017
51	30	47		02.09	CHICAGO AVE.		YES	Y	W	W	2			REAR-END	FOL-CLOSE	DYLGT	WET	PDO	12-22-2017
51	30	47		02.09	CHICAGO AVE.		YES	Y	E	E	2			RIGHT-ANGLE	F-YIELD	DYLGT	DRY	PDO	03-18-2018
51	30	47		02.09	CHICAGO AVE.		YES	Y	W	W	3			REAR-END	FOL-CLOSE	DYLGT	DRY	PDO	08-12-2018
51	30	47		02.09	CHICAGO AVE.		YES	Y	E	E	3			REAR-END	FOL-CLOSE	DYLGT	DRY	PDO	09-13-2018
51	30	47		02.09	CHICAGO AVE.		YES	Y	W	S	2	1		RIGHT-ANGLE	F-YIELD	DYLGT	WET	P INJ	10-09-2018
51	30	47		02.09	CHICAGO AVE.		YES	Y	E	N	2			RIGHT-ANGLE	F-STOP	DYLGT	DRY	PDO	10-25-2018
51	30	47		02.09	CHICAGO AVE.		YES	Y	E	E	2			REAR-END	FOL-CLOSE	DYLGT	DRY	PDO	07-14-2019
51	30	47		02.09	CHICAGO AVE.	AT-GR SVC RD	YES	Y	W	S	2			RIGHT-ANGLE	F-YIELD	DARK	DRY	PDO	10-19-2019
51	30	47		02.09	CHICAGO AVE.		YES	Y	S	S	2			REAR-END	FOL-CLOSE	DARK	DRY	PDO	01-04-2020
51	30	47		02.09	CHICAGO AVE.		YES	Y	W	W	2	3		REAR-END	FOL-CLOSE	DYLGT	DRY	N-I INJ	05-11-2020

* INCLUDES SUSPECTED SERIOUS, NON-INCAPACITATING, AND POSSIBLE INJURIES.



HIGHWAY SYSTEM COLLISION LISTING

Date Range: 01-01-2017 Thru 12-18-2024

Program Provided by:
 Traffic Engineering Division
 Collision Analysis and Safety Branch
 (405) 522-0985
 Created: 12/18/2024 by Stephen Waldrop

USE

				HIGHWAY COLLISIONS		CITY STREET COLLISIONS		COUNTY ROAD COLLISIONS					TOTAL COLLISIONS						
Cnty	City	CS #	Int. #	Mile Post	Location	Features	Int. Related	On Map	Dir. 1	Dir. 2	# Veh.	# Inj.*	# Fat.	Type of Collision	Unsafe Unlawful	Lighting Cond.	Roadway Cond.	Severity	Date
51	30	47		02.09	CHICAGO AVE.		YES	Y	W	N	2			ANGLE-TURNING	F-YIELD	DYLGT	DRY	PDO	05-24-2020
51	30	47		02.09	CHICAGO AVE.		YES	Y	E	E	2	1		REAR-END	FOL-CLOSE	DYLGT	DRY	SS INJ	05-26-2020
51	30	47		02.09	CHICAGO AVE.		YES	Y	N	W	2	2		ANGLE-TURNING	F-STOP	DYLGT	DRY	N-I INJ	06-13-2020
51	30	47		02.09	CHICAGO AVE.		YES	Y	E	E	2			REAR-END	FOL-CLOSE	DYLGT	DRY	PDO	07-15-2020
51	30	47		02.09	CHICAGO AVE.		YES	Y	E	E	2	2		REAR-END	F-YIELD	DYLGT	WET	N-I INJ	09-09-2020
51	30	47		02.09	CHICAGO AVE.		YES	Y	E	E	2			REAR-END	FOL-CLOSE	DYLGT	DRY	PDO	10-17-2020
51	30	47		02.09	CHICAGO AVE.		YES	Y	W	W	5	1		SIDESWIPE-SAME	UNSAF-SPD	DARK	DRY	P INJ	11-25-2020
51	30	47		02.09	CHICAGO AVE.		YES	Y	S	W	2	1		RIGHT-ANGLE	F-STOP	DYLGT	DRY	P INJ	01-22-2021
51	30	47		02.09	CHICAGO AVE.		YES	Y	W	N	2			RIGHT-ANGLE	F-YIELD	DYLGT	DRY	PDO	03-26-2021
51	30	47		02.09	CHICAGO AVE.		YES	Y	E	E	2	2		REAR-END	INATT	DYLGT	DRY	N-I INJ	04-29-2021
51	30	47		02.09	CHICAGO AVE.		YES	Y	E	E	2	1		OTHER	FOL-CLOSE	DYLGT	DRY	P INJ	02-28-2022
51	30	47		02.09	CHICAGO AVE.		YES	Y	W	N	2	2		ANGLE-TURNING		DYLGT	DRY	N-I INJ	07-01-2022
51	30	47		02.09	CHICAGO AVE.		YES	Y	E	E	2	2		REAR-END	FOL-CLOSE	DYLGT	DRY	P INJ	10-14-2022
51	30	47		02.09	CHICAGO AVE.		YES	Y	W	W	2			SIDESWIPE-SAME	IMP-LN-CHG	DYLGT	WET	PDO	12-10-2022
51	30	47		02.09	CHICAGO AVE.		YES	Y	W	W	2			OTHER	IMP-LN-CHG	DYLGT	DRY	PDO	03-25-2023
51	30	47		02.09	CHICAGO AVE.		YES	Y	W	W	3	5		REAR-END	INATT	DYLGT	DRY	N-I INJ	03-26-2023
51	30	47		02.09	CHICAGO AVE.		YES	Y	E	E	2	1		REAR-END	FOL-CLOSE	DYLGT	WET	P INJ	04-25-2023
51	30	47		02.09	CHICAGO AVE.		YES	Y	W	W	2	1		OTHER	FOL-CLOSE	DYLGT	DRY	P INJ	07-24-2023
51	30	47		02.09	CHICAGO AVE.		YES	Y	W	W	2			REAR-END	FOL-CLOSE	DYLGT	DRY	PDO	11-02-2023
51	30	47		02.09	CHICAGO AVE.		YES	Y	E	E	3	2		REAR-END	FOL-CLOSE	DYLGT	DRY	P INJ	12-29-2023
(51) MUSKOGEE				(30) MUSKOGEE	HWY: US-62, SHAWNEE BYPASS		AT: 00.01 after CHICAGO AVE.												
51	30	47		02.10			NO	Y	E	E	2	1		REAR-END	FOL-CLOSE	DARK	DRY	P INJ	11-15-2020
(51) MUSKOGEE				(30) MUSKOGEE	HWY: US-62, SHAWNEE BYPASS		AT: 00.04 after PICKENS AVE.												
51	30	47		02.18			NO	Y	W	W	3	1		REAR-END	FOL-CLOSE	DYLGT	DRY	N-I INJ	11-11-2020
(51) MUSKOGEE				(30) MUSKOGEE	HWY: US-62, SHAWNEE BYPASS		AT: 00.03 before EUCLID AVE.												
51	30	47		02.19			NO	Y	W	W	2			REAR-END	F-YIELD	DYLGT	WET	PDO	04-25-2018
(51) MUSKOGEE				(30) MUSKOGEE	HWY: US-62, SHAWNEE BYPASS		AT: 00.02 before EUCLID AVE.												
51	30	47		02.20			NO	Y	W	W	2			REAR-END	FOL-CLOSE	DYLGT	DRY	PDO	06-06-2017
(51) MUSKOGEE				(30) MUSKOGEE	HWY: US-62, SHAWNEE BYPASS		AT: EUCLID AVE.												
51	30	47		02.22	EUCLID AVE.		YES	Y	E	S	2			ANGLE-TURNING	F-YIELD	DYLGT	DRY	PDO	05-26-2017
51	30	47		02.22	EUCLID AVE.		YES	Y	W	N	2			RIGHT-ANGLE	F-YIELD	DYLGT	DRY	PDO	02-08-2018
51	30	47		02.22	EUCLID AVE.		YES	Y	W	W	2			SIDESWIPE-SAME	F-YIELD	DYLGT	DRY	PDO	12-07-2018
51	30	47		02.22	EUCLID AVE.		YES	Y	N	W	2	1		RIGHT-ANGLE	F-YIELD	DYLGT	WET	P INJ	10-30-2019
51	30	47		02.22	EUCLID AVE.		YES	Y	W	W	2			REAR-END	FOL-CLOSE	DYLGT	WET	PDO	07-02-2021
51	30	47		02.22	EUCLID AVE.		YES	Y	W	W	2			REAR-END	OTHER	DARK	DRY	PDO	07-06-2021
51	30	47		02.22	EUCLID AVE.		YES	Y	E	E	2			REAR-END	FOL-CLOSE	DYLGT	DRY	PDO	09-29-2021
51	30	47		02.22	EUCLID AVE.		YES	Y	N	E	2	1		RIGHT-ANGLE	F-YIELD	DARK	DRY	N-I INJ	03-05-2023

* INCLUDES SUSPECTED SERIOUS, NON-INCAPACITATING, AND POSSIBLE INJURIES.



HIGHWAY SYSTEM COLLISION LISTING

Date Range: 01-01-2017 Thru 12-18-2024

Program Provided by:
 Traffic Engineering Division
 Collision Analysis and Safety Branch
 (405) 522-0985
 Created: 12/18/2024 by Stephen Waldrop

USE

				HIGHWAY COLLISIONS			CITY STREET COLLISIONS			COUNTY ROAD COLLISIONS					TOTAL COLLISIONS				
Cnty	City	CS #	Int. #	Mile Post	Location	Features	Int. Related	On Map	Dir. 1	Dir. 2	# Veh.	# Inj.*	# Fat.	Type of Collision	Unsafe Unlawful	Lighting Cond.	Roadway Cond.	Severity	Date
51	30	47		02.22	EUCLID AVE.		YES	Y	W	S	2			ANGLE-TURNING	F-YIELD	DYLGT	DRY	PDO	01-18-2024
(51) MUSKOGEE				(30) MUSKOGEE HWY: US-62, SHAWNEE BYPASS			AT: 00.02 before ROOSEVELT AVE.												
51	30	47		02.33			NO	Y	W	W	2	1		REAR-END	FOL-CLOSE	DYLGT	DRY	N-I INJ	12-26-2023
(51) MUSKOGEE				(30) MUSKOGEE HWY: US-62, SHAWNEE BYPASS			AT: ROOSEVELT AVE.												
51	30	47		02.35	ROOSEVELT AVE.	AT-GR SVC RD	YES	Y	E	S	2			ANGLE-TURNING	F-YIELD	DYLGT	DRY	PDO	11-01-2018
51	30	47		02.35	ROOSEVELT AVE.		YES	Y	E	-	1	1		F-O TRAFF-SIGN	UNSAF-SPD	DARK	WET	SS INJ	01-04-2019
51	30	47		02.35	ROOSEVELT AVE.		YES	Y	N	N	2			REAR-END	INATT	DYLGT	DRY	PDO	04-03-2019
51	30	47		02.35	ROOSEVELT AVE.		YES	Y	E	E	2			SIDESWIPE-SAME	IMP-LN-CHG	DYLGT	DRY	PDO	02-28-2020
51	30	47		02.35	ROOSEVELT AVE.		YES	Y	W	W	2			ANGLE-TURNING	F-YIELD	DYLGT	DRY	PDO	09-05-2020
51	30	47		02.35	ROOSEVELT AVE.		YES	Y	E	E	2			REAR-END	INATT	DYLGT	DRY	PDO	11-19-2021
51	30	47		02.35	ROOSEVELT AVE.		YES	Y	N	N	2			OTHER	IMP-BACK	DYLGT	DRY	PDO	07-18-2023
(51) MUSKOGEE				(30) MUSKOGEE HWY: US-62, SHAWNEE BYPASS			AT: 00.02 after ROOSEVELT AVE.												
51	30	47		02.37			NO	Y	E	E	2			SIDESWIPE-SAME	IMP-LN-CHG	DYLGT	DRY	PDO	12-11-2019
(51) MUSKOGEE				(30) MUSKOGEE HWY: US-62, SHAWNEE BYPASS			AT: 00.04 after ROOSEVELT AVE.												
51	30	47		02.39			NO	Y	E	E	2	1		REAR-END	FOL-CLOSE	DYLGT	DRY	N-I INJ	10-09-2020
(51) MUSKOGEE				(30) MUSKOGEE HWY: US-62, SHAWNEE BYPASS			AT: 00.06 after ROOSEVELT AVE.												
51	30	47		02.41			NO	Y	E	E	2			REAR-END	IMP-TURN	DYLGT	DRY	PDO	06-03-2019
(51) MUSKOGEE				(30) MUSKOGEE HWY: US-62, SHAWNEE BYPASS			AT: 00.04 before MAIN ST.												
51	30	47		02.43			NO	Y	W	-	2	2		OTHER	OTHER	DYLGT	DRY	P INJ	12-20-2021
(51) MUSKOGEE				(30) MUSKOGEE HWY: US-62, SHAWNEE BYPASS			AT: 00.01 before MAIN ST.												
51	30	47		02.46			NO	Y	W	W	2			REAR-END	FOL-CLOSE	DYLGT	WET	PDO	02-06-2021
(51) MUSKOGEE				(30) MUSKOGEE HWY: US-62, SHAWNEE BYPASS			AT: 00.01 after MAIN ST.												
51	30	47		02.48			NO	Y	E	E	2			REAR-END	NO-IMP-ACT	DYLGT	DRY	PDO	06-04-2019
(51) MUSKOGEE				(30) MUSKOGEE HWY: US-62, SHAWNEE BYPASS			AT: 00.06 after MAIN ST.												
51	30	47		02.53			NO	Y	W	-	1	3		OTH-SINGLE-VEH	UNSAF-SPD	DYLGT	WET	P INJ	11-24-2022
(51) MUSKOGEE				(30) MUSKOGEE HWY: US-62, SHAWNEE BYPASS			AT: 00.08 after MAIN ST.												
51	30	47		02.55			NO	Y	E	W	3	1		SIDESWIPE-OPP		DYLGT	DRY	P INJ	08-08-2022
(51) MUSKOGEE				(30) MUSKOGEE HWY: US-62, SHAWNEE BYPASS			AT: OLD SHAWNEE RD.												
51	30	47		02.67	OLD SHAWNEE RD.		YES	Y	E	E	2	3		REAR-END	INATT	DARK	DRY	N-I INJ	10-30-2017
51	30	47		02.67	OLD SHAWNEE RD.		YES	Y	N	N	2			SIDESWIPE-SAME	IMP-TURN	DYLGT	DRY	PDO	10-09-2019
51	30	47		02.67	OLD SHAWNEE RD.		YES	Y	S	S	2			REAR-END	INATT	DARK	DRY	PDO	12-13-2019
51	30	47		02.67	OLD SHAWNEE RD.		YES	Y	E	S	2			ANGLE-TURNING	F-YIELD	DYLGT	DRY	PDO	06-18-2020
(51) MUSKOGEE				(30) MUSKOGEE HWY: US-62, SHAWNEE BYPASS			AT: 00.03 after OLD SHAWNEE RD.												
51	30	47		02.70			NO	Y	N	W	2	1		ANGLE-TURNING	F-YIELD	DYLGT	WET	P INJ	12-19-2017
(51) MUSKOGEE				(30) MUSKOGEE HWY: US-62, SHAWNEE BYPASS			AT: 00.08 after OLD SHAWNEE RD.												
51	30	47		02.75		WKZONE LANE END/BEG	NO	Y	E	E	2			SIDESWIPE-SAME	OTHER	DYLGT	DRY	PDO	04-08-2020
(51) MUSKOGEE				(30) MUSKOGEE HWY: US-62, SHAWNEE BYPASS			AT: 00.09 after OLD SHAWNEE RD.												

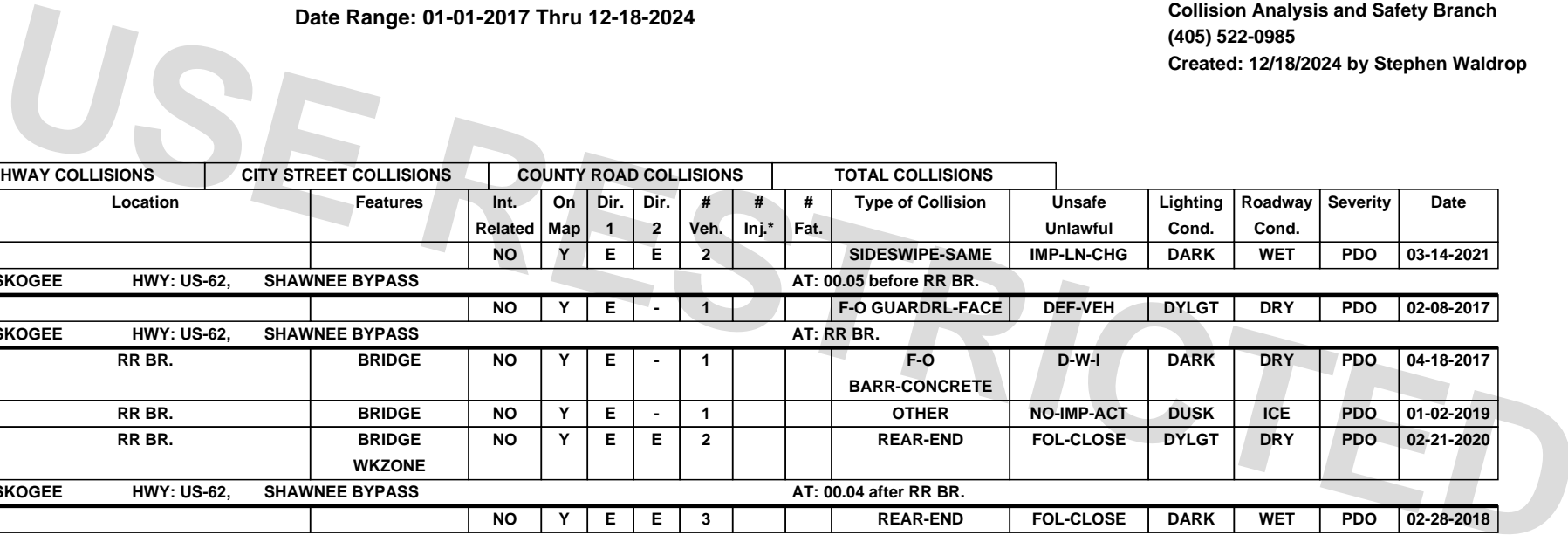
* INCLUDES SUSPECTED SERIOUS, NON-INCAPACITATING, AND POSSIBLE INJURIES.



HIGHWAY SYSTEM COLLISION LISTING

Date Range: 01-01-2017 Thru 12-18-2024

Program Provided by:
 Traffic Engineering Division
 Collision Analysis and Safety Branch
 (405) 522-0985
 Created: 12/18/2024 by Stephen Waldrop



				HIGHWAY COLLISIONS			CITY STREET COLLISIONS			COUNTY ROAD COLLISIONS					TOTAL COLLISIONS				
Cnty	City	CS #	Int. #	Mile Post	Location	Features	Int. Related	On Map	Dir. 1	Dir. 2	# Veh.	# Inj.*	# Fat.	Type of Collision	Unsafe Unlawful	Lighting Cond.	Roadway Cond.	Severity	Date
51	30	47		02.76			NO	Y	E	E	2			SIDESWIPE-SAME	IMP-LN-CHG	DARK	WET	PDO	03-14-2021
(51) MUSKOGEE				(30) MUSKOGEE HWY: US-62, SHAWNEE BYPASS			AT: 00.05 before RR BR.												
51	30	47		02.87			NO	Y	E	-	1			F-O GUARDRL-FACE	DEF-VEH	DYLGT	DRY	PDO	02-08-2017
(51) MUSKOGEE				(30) MUSKOGEE HWY: US-62, SHAWNEE BYPASS			AT: RR BR.												
51	30	47		02.92	RR BR.	BRIDGE	NO	Y	E	-	1			F-O BARR-CONCRETE	D-W-I	DARK	DRY	PDO	04-18-2017
51	30	47		02.92	RR BR.	BRIDGE	NO	Y	E	-	1			OTHER	NO-IMP-ACT	DUSK	ICE	PDO	01-02-2019
51	30	47		02.92	RR BR.	BRIDGE WKZONE	NO	Y	E	E	2			REAR-END	FOL-CLOSE	DYLGT	DRY	PDO	02-21-2020
(51) MUSKOGEE				(30) MUSKOGEE HWY: US-62, SHAWNEE BYPASS			AT: 00.04 after RR BR.												
51	30	47		02.96			NO	Y	E	E	3			REAR-END	FOL-CLOSE	DARK	WET	PDO	02-28-2018
(51) MUSKOGEE				(30) MUSKOGEE HWY: US-62, SHAWNEE BYPASS			AT: 00.08 after RR BR.												
51	30	47		03.00		TRAFFIC BACKUP	NO	Y	W	W	3	2		REAR-END	FOL-CLOSE	DYLGT	DRY	P INJ	04-07-2017
(51) MUSKOGEE				(30) MUSKOGEE HWY: US-62, SHAWNEE BYPASS			AT: 00.15 after RR BR.												
51	30	47		03.07		TRAFFIC BACKUP	NO	Y	W	W	2	1		REAR-END	FOL-CLOSE	DYLGT	DRY	P INJ	04-24-2020
(51) MUSKOGEE				(30) MUSKOGEE HWY: US-62, SHAWNEE BYPASS			AT: 00.15 before CURTS MALL ENT.												
51	30	47		03.10			NO	Y	W	-	1			F-O GUARDRL-FACE	INATT	DUSK	WET	PDO	10-09-2018
(51) MUSKOGEE				(30) MUSKOGEE HWY: US-62, SHAWNEE BYPASS			AT: 00.02 before CURTS MALL ENT.												
51	30	47		03.23			NO	Y	W	W	2			SIDESWIPE-SAME	IMP-LN-CHG	DYLGT	DRY	PDO	10-06-2017
51	30	47		03.23			NO	Y	W	W	2			REAR-END	FOL-CLOSE	DYLGT	DRY	PDO	10-06-2017
(51) MUSKOGEE				(30) MUSKOGEE HWY: US-62, SHAWNEE BYPASS			AT: 00.01 before CURTS MALL ENT.												
51	30	47		03.24			NO	Y	E	E	2			SIDESWIPE-SAME	F-YIELD	DYLGT	ICE	PDO	01-19-2019
(51) MUSKOGEE				(30) MUSKOGEE HWY: US-62, SHAWNEE BYPASS			AT: CURTS MALL ENT.												
51	30	47		03.25	CURTS MALL ENT.	DRIVEWAY MEDIAN OPNIN	YES	Y	E	E	2	2		REAR-END	OTHER	DYLGT	DRY	N-I INJ	11-24-2018
51	30	47		03.25	CURTS MALL ENT.		YES	Y	W	W	2			ANGLE-TURNING	IMP-TURN	DYLGT	DRY	PDO	01-15-2019
51	30	47		03.25	CURTS MALL ENT.	DRIVEWAY	YES	Y	W	-	1			OTHER	UNSAF-SPD	DARK	DRY	PDO	02-04-2019
51	30	47		03.25	CURTS MALL ENT.	DRIVEWAY	YES	Y	N	W	2	3		ANGLE-TURNING	F-YIELD	DYLGT	DRY	N-I INJ	06-20-2022
(51) MUSKOGEE				(30) MUSKOGEE HWY: US-62, SHAWNEE BYPASS			AT: 00.01 after CURTS MALL ENT.												
51	30	47		03.26			NO	Y	W	W	2			REAR-END	NO-IMP-ACT	DYLGT	ICE	PDO	01-02-2019
(51) MUSKOGEE				(30) MUSKOGEE HWY: US-62, SHAWNEE BYPASS			AT: 00.08 before YORK ST.												
51	30	47		03.42			NO	Y	N	-	1			OTHER	IMP-TURN	DYLGT	DRY	PDO	09-17-2019
51	30	47		03.42			NO	Y	E	-	1			OTHER	UNSAF-SPD	DYLGT	ICE	PDO	02-09-2021
51	30	47		03.42			NO	Y	E	E	2	2		REAR-END	L-CENTER	DYLGT	DRY	P INJ	11-02-2021
(51) MUSKOGEE				(30) MUSKOGEE HWY: US-62, SHAWNEE BYPASS			AT: 00.02 before YORK ST.												
51	30	47		03.48		SECONDARY	NO	Y	W	W	2			REAR-END	FOL-CLOSE	DYLGT	ICE	PDO	01-02-2019
(51) MUSKOGEE				(30) MUSKOGEE HWY: US-62, SHAWNEE BYPASS			AT: 00.01 before YORK ST.												

* INCLUDES SUSPECTED SERIOUS, NON-INCAPACITATING, AND POSSIBLE INJURIES.



HIGHWAY SYSTEM COLLISION LISTING

Date Range: 01-01-2017 Thru 12-18-2024

Program Provided by:
 Traffic Engineering Division
 Collision Analysis and Safety Branch
 (405) 522-0985
 Created: 12/18/2024 by Stephen Waldrop

USE PREVIOUS EDITION

				HIGHWAY COLLISIONS			CITY STREET COLLISIONS			COUNTY ROAD COLLISIONS					TOTAL COLLISIONS				
Cnty	City	CS #	Int. #	Mile Post	Location	Features	Int. Related	On Map	Dir. 1	Dir. 2	# Veh.	# Inj.*	# Fat.	Type of Collision	Unsafe Unlawful	Lighting Cond.	Roadway Cond.	Severity	Date
51	30	47		03.49		DRIVEWAY MEDIAN OPNIN	NO	Y		-	2	1		REAR-END		DYLGT		P INJ	11-02-2021
(51) MUSKOGEE				(30) MUSKOGEE			HWY: US-62B, MAIN ST.					AT: 00.01 before BROADWAY							
51	30	51		00.06			NO	Y	E	-	2			OTHER	OTHER	DYLGT	DRY	PDO	05-26-2017
(51) MUSKOGEE				(30) MUSKOGEE			HWY: US-62B, MAIN ST.					AT: BROADWAY							
51	30	51		00.07	BROADWAY		YES	Y	E	S	2			RIGHT-ANGLE	F-YIELD	DYLGT	DRY	PDO	01-21-2017
51	30	51		00.07	BROADWAY		YES	Y	W	E	2			ANGLE-TURNING	IMP-TURN	DYLGT	DRY	PDO	04-11-2018
51	30	51		00.07	BROADWAY		YES	Y	S	E	2			RIGHT-ANGLE	F-STOP	DYLGT	DRY	PDO	06-24-2018
51	30	51		00.07	BROADWAY		YES	Y	N	E	2	1		RIGHT-ANGLE	F-STOP	DYLGT	DRY	P INJ	10-22-2018
51	30	51		00.07	BROADWAY		YES	Y	W	W	2			ANGLE-TURNING	IMP-TURN	DYLGT	DRY	PDO	01-25-2019
51	30	51		00.07	BROADWAY		YES	Y	S	S	2			SIDESWIPE-SAME	IMP-PASS	DYLGT	DRY	PDO	02-21-2019
51	30	51		00.07	BROADWAY		YES	Y	S	E	2			RIGHT-ANGLE	F-STOP	Other	DRY	PDO	05-31-2019
51	30	51		00.07	BROADWAY		YES	Y	N	N	2			OTH-BACKING	IMP-BACK	DYLGT	DRY	PDO	08-07-2019
51	30	51		00.07	BROADWAY		YES	Y	E	E	2			REAR-END	IMP-BACK	DYLGT	DRY	PDO	09-25-2019
51	30	51		00.07	BROADWAY		YES	Y	S	N	2			ANGLE-TURNING	F-YIELD	DYLGT	DRY	PDO	11-19-2019
51	30	51		00.07	BROADWAY		YES	Y	N	E	2			RIGHT-ANGLE	F-YIELD	DYLGT	DRY	PDO	11-02-2020
(51) MUSKOGEE				(30) MUSKOGEE			HWY: US-62B, MAIN ST.					AT: 00.03 before COURT ST.							
51	30	51		00.13			NO	Y	N	-	1			OTHER	INATT	DARK	DRY	PDO	09-27-2020
(51) MUSKOGEE				(30) MUSKOGEE			HWY: US-62B, MAIN ST.					AT: 00.02 before COURT ST.							
51	30	51		00.14			NO	Y	N	-	2			OTHER	INATT	DYLGT	DRY	PDO	05-06-2017
(51) MUSKOGEE				(30) MUSKOGEE			HWY: US-62B, MAIN ST.					AT: 00.01 before COURT ST.							
51	30	51		00.15			NO	Y	S	S	2			SIDESWIPE-SAME	OTHER	DYLGT	DRY	PDO	06-30-2021
(51) MUSKOGEE				(30) MUSKOGEE			HWY: US-62B, MAIN ST.					AT: COURT ST.							
51	30	51		00.16	COURT ST.		YES	Y	S	S	2			REAR-END	FOL-CLOSE	DYLGT	DRY	PDO	01-23-2017
51	30	51		00.16	COURT ST.		YES	Y	N	N	2			REAR-END	FOL-CLOSE	DYLGT	DRY	PDO	02-06-2017
51	30	51		00.16	COURT ST.		YES	Y	S	W	2	1		RIGHT-ANGLE	F-YIELD	DYLGT	DRY	P INJ	07-20-2017
51	30	51		00.16	COURT ST.		YES	Y	S	N	2	1		ANGLE-TURNING	F-YIELD	DYLGT	DRY	N-I INJ	10-01-2017
51	30	51		00.16	COURT ST.		YES	Y	N	N	2			REAR-END	FOL-CLOSE	DYLGT	DRY	PDO	07-06-2018
51	30	51		00.16	COURT ST.		YES	Y	S	S	2			SIDESWIPE-SAME	IMP-PASS	DYLGT	DRY	PDO	08-30-2018
51	30	51		00.16	COURT ST.		YES	Y	S	S	2			REAR-END	F-STOP	DYLGT	DRY	PDO	01-22-2019
51	30	51		00.16	COURT ST.		YES	Y	N	W	2			RIGHT-ANGLE	F-STOP	DYLGT	DRY	PDO	07-09-2019
51	30	51		00.16	COURT ST.		YES	Y	W		2			RIGHT-ANGLE	F-STOP	DYLGT	DRY	PDO	07-10-2019
51	30	51		00.16	COURT ST.		YES	Y	S	S	2			SIDESWIPE-SAME	F-YIELD	DYLGT	DRY	PDO	07-30-2019
51	30	51		00.16	COURT ST.		YES	Y	W	W	2			REAR-END	F-STOP	DYLGT	DRY	PDO	10-11-2019
51	30	51		00.16	COURT ST.		YES	Y	W	E	2			ANGLE-TURNING	F-YIELD	DYLGT	DRY	PDO	10-19-2019
51	30	51		00.16	COURT ST.		YES	Y	W	W	3			SIDESWIPE-SAME	DEF-VEH	DYLGT	DRY	PDO	11-15-2019
51	30	51		00.16	COURT ST.		YES	Y	N	S	2	6		ANGLE-TURNING	F-YIELD	DYLGT	WET	P INJ	01-10-2020

* INCLUDES SUSPECTED SERIOUS, NON-INCAPACITATING, AND POSSIBLE INJURIES.



HIGHWAY SYSTEM COLLISION LISTING

Date Range: 01-01-2017 Thru 12-18-2024

Program Provided by:
 Traffic Engineering Division
 Collision Analysis and Safety Branch
 (405) 522-0985
 Created: 12/18/2024 by Stephen Waldrop

USE

				HIGHWAY COLLISIONS		CITY STREET COLLISIONS		COUNTY ROAD COLLISIONS					TOTAL COLLISIONS						
Cnty	City	CS #	Int. #	Mile Post	Location	Features	Int. Related	On Map	Dir. 1	Dir. 2	# Veh.	# Inj.*	# Fat.	Type of Collision	Unsafe Unlawful	Lighting Cond.	Roadway Cond.	Severity	Date
51	30	51		00.16	COURT ST.		YES	Y	W	-	1	1		F-O TRAFF-SIGNAL	F-YIELD	DARK	DRY	N-I INJ	03-09-2020
51	30	51		00.16	COURT ST.		YES	Y	S	-	1	1		PEDAL-CYCLE		DYLGT	DRY	SS INJ	03-21-2020
51	30	51		00.16	COURT ST.		YES	Y	N	E	2			RIGHT-ANGLE	F-STOP	DYLGT	WET	PDO	09-09-2020
51	30	51		00.16	COURT ST.		YES	Y	N	W	2	1		ANGLE-TURNING	F-STOP	DYLGT	WET	N-I INJ	09-22-2020
51	30	51		00.16	COURT ST.		YES	Y	S	E	2	1		RIGHT-ANGLE	F-STOP	DYLGT	DRY	N-I INJ	09-28-2020
51	30	51		00.16	COURT ST.		YES	Y	W	W	3			REAR-END	FOL-CLOSE	DYLGT	DRY	PDO	10-02-2020
51	30	51		00.16	COURT ST.		YES	Y	N	N	2			ANGLE-TURNING	F-YIELD	DARK	DRY	PDO	11-21-2020
51	30	51		00.16	COURT ST.		YES	Y	N	N	2			ANGLE-TURNING	IMP-TURN	DYLGT	DRY	PDO	03-13-2021
51	30	51		00.16	COURT ST.		YES	Y	E	-	1			F-O OTHER	OTHER	DYLGT	WET	PDO	04-16-2021
51	30	51		00.16	COURT ST.		YES	Y	S	W	2	1		RIGHT-ANGLE	F-STOP	DYLGT	DRY	N-I INJ	06-03-2021
51	30	51		00.16	COURT ST.	WKZONE	YES	Y	S	W	2			RIGHT-ANGLE	F-YIELD	DYLGT	DRY	PDO	08-16-2021
51	30	51		00.16	COURT ST.		YES	Y	W	W	2			ANGLE-TURNING	F-YIELD	DYLGT	DRY	PDO	09-28-2021
51	30	51		00.16	COURT ST.		YES	Y	S	W	2	1		RIGHT-ANGLE		DYLGT	DRY	N-I INJ	01-18-2022
51	30	51		00.16	COURT ST.		YES	Y	W	W	3	1		REAR-END	FOL-CLOSE	DYLGT	DRY	P INJ	03-09-2022
51	30	51		00.16	COURT ST.		YES	Y	N	N	2	1		ANGLE-TURNING	F-YIELD	DARK	DRY	N-I INJ	07-11-2022
51	30	51		00.16	COURT ST.		YES	Y	S	E	2	1		RIGHT-ANGLE		DYLGT	DRY	N-I INJ	10-04-2022
51	30	51		00.16	COURT ST.		YES	Y	N	N	2	1		REAR-END	DEF-VEH	DYLGT	DRY	P INJ	11-29-2023
(51) MUSKOGEE				(30) MUSKOGEE				HWY: US-62B, MAIN ST.					AT: DENISON ST.						
51	30	51		00.23	DENISON ST.		YES	Y	E	E	2			REAR-END	UNSAF-SPD	DYLGT	ICE	PDO	01-07-2017
51	30	51		00.23	DENISON ST.		YES	Y	S	S	2			ANGLE-TURNING	F-YIELD	DYLGT	DRY	PDO	01-20-2017
51	30	51		00.23	DENISON ST.		YES	Y	S	W	2			RIGHT-ANGLE	F-STOP	DYLGT	WET	PDO	10-31-2018
51	30	51		00.23	DENISON ST.		YES	Y	S	S	2	2		ANGLE-TURNING	IMP-LN-CHG	DYLGT	DRY	P INJ	08-12-2019
51	30	51		00.23	DENISON ST.		YES	Y	S	S	2	1		REAR-END	FOL-CLOSE	DYLGT	DRY	P INJ	07-20-2020
51	30	51		00.23	DENISON ST.		YES	Y	S	S	2			REAR-END	INATT	DYLGT	DRY	PDO	12-16-2020
51	30	51		00.23	DENISON ST.		YES	Y	E	S	2			ANGLE-TURNING	F-YIELD	DYLGT	DRY	PDO	04-09-2021
(51) MUSKOGEE				(30) MUSKOGEE				HWY: US-62B, MAIN ST.					AT: COMMERCIAL ST.						
51	30	51		00.30	COMMERCIAL ST.		YES	Y	S	S	2			SIDESWIPE-SAME	IMP-LN-CHG	DYLGT	WET	PDO	12-14-2018
(51) MUSKOGEE				(30) MUSKOGEE				HWY: US-62B, MAIN ST.					AT: 00.02 after COMMERCIAL ST.						
51	30	51		00.32		TRAFFIC BACKUP	NO	Y	S	S	2	3		REAR-END	FOL-CLOSE	DARK	DRY	P INJ	11-30-2017
51	30	51		00.32			NO	Y	N	-	2	2		F-O CURB	OTHER	DYLGT	DRY	SS INJ	12-05-2019
(51) MUSKOGEE				(30) MUSKOGEE				HWY: US-62B, MAIN ST.					AT: 00.05 after COMMERCIAL ST.						
51	30	51		00.35			NO	Y	S	S	2			ANGLE-TURNING	IMP-LN-CHG	DYLGT	DRY	PDO	10-19-2020
(51) MUSKOGEE				(30) MUSKOGEE				HWY: US-62B, MAIN ST.					AT: 00.06 after COMMERCIAL ST.						
51	30	51		00.36			NO	Y	N	N	2			SIDESWIPE-SAME	NEG-DRVING	DYLGT	DRY	PDO	08-03-2018
(51) MUSKOGEE				(30) MUSKOGEE				HWY: US-62B, MAIN ST.					AT: MARTIN LUTHER/FOND						
51	30	51		00.47	MARTIN LUTHER/FOND		YES	Y	S	S	3	2		REAR-END	F-STOP	DARK	DRY	N-I INJ	01-10-2017
51	30	51		00.47	MARTIN LUTHER/FOND		YES	Y	S	E	2			RIGHT-ANGLE	F-YIELD	DYLGT	DRY	PDO	08-25-2017

* INCLUDES SUSPECTED SERIOUS, NON-INCAPACITATING, AND POSSIBLE INJURIES.



HIGHWAY SYSTEM COLLISION LISTING

Date Range: 01-01-2017 Thru 12-18-2024

Program Provided by:
 Traffic Engineering Division
 Collision Analysis and Safety Branch
 (405) 522-0985
 Created: 12/18/2024 by Stephen Waldrop

USE

Cnty	City	CS #	Int. #	HIGHWAY COLLISIONS		CITY STREET COLLISIONS		COUNTY ROAD COLLISIONS					TOTAL COLLISIONS						
				Mile Post	Location	Features	Int. Related	On Map	Dir. 1	Dir. 2	# Veh.	# Inj.*	# Fat.	Type of Collision	Unsafe Unlawful	Lighting Cond.	Roadway Cond.	Severity	Date
51	30	51		00.47	MARTIN LUTHER/FOND		YES	Y	E	S	2			RIGHT-ANGLE	F-YIELD	DYLG	DRY	PDO	12-27-2017
51	30	51		00.47	MARTIN LUTHER/FOND		YES	Y	S	W	2			RIGHT-ANGLE	OTHER	DARK	DRY	PDO	01-22-2018
51	30	51		00.47	MARTIN LUTHER/FOND		YES	Y	W	N	2	1		RIGHT-ANGLE	INATT	DYLG	DRY	P INJ	04-05-2018
51	30	51		00.47	MARTIN LUTHER/FOND		YES	Y	N	N	2			ANGLE-TURNING	IMP-TURN	DYLG	DRY	PDO	06-18-2018
51	30	51		00.47	MARTIN LUTHER/FOND		YES	Y	W	W	2			REAR-END	FOL-CLOSE	DYLG	DRY	PDO	07-12-2018
51	30	51		00.47	MARTIN LUTHER/FOND		YES	Y	W	W	2			REAR-END	IMP-BACK	DARK	DRY	PDO	08-10-2018
51	30	51		00.47	MARTIN LUTHER/FOND		YES	Y	N	E	2	1		RIGHT-ANGLE	F-STOP	DYLG	DRY	P INJ	08-31-2018
51	30	51		00.47	MARTIN LUTHER/FOND		YES	Y	W	W	2			REAR-END	INATT	DYLG	DRY	PDO	02-14-2019
51	30	51		00.47	MARTIN LUTHER/FOND		YES	Y	W	S	2			RIGHT-ANGLE	OTHER	DYLG	ICE	PDO	03-04-2019
51	30	51		00.47	MARTIN LUTHER/FOND		YES	Y	E	E	2	1		REAR-END	INATT	DARK	DRY	P INJ	06-04-2019
51	30	51		00.47	MARTIN LUTHER/FOND		YES	Y	N	N	3			REAR-END	FOL-CLOSE	DYLG	DRY	PDO	09-03-2019
51	30	51		00.47	MARTIN LUTHER/FOND		YES	Y	W	W	2			REAR-END	OTHER	DYLG	DRY	PDO	09-07-2019
51	30	51		00.47	MARTIN LUTHER/FOND		YES	Y	N	N	2			REAR-END	FOL-CLOSE	DYLG	WET	PDO	10-10-2019
51	30	51		00.47	MARTIN LUTHER/FOND		YES	Y	W	E	2			ANGLE-TURNING	F-YIELD	DARK	DRY	PDO	06-18-2020
51	30	51		00.47	MARTIN LUTHER/FOND		YES	Y	E	N	2	3		RIGHT-ANGLE	F-STOP	DARK	DRY	N-I INJ	08-13-2020
51	30	51		00.47	MARTIN LUTHER/FOND		YES	Y	W	N	2			ANGLE-TURNING	F-STOP	DYLG	DRY	PDO	09-10-2020
51	30	51		00.47	MARTIN LUTHER/FOND		YES	Y	S	S	2	1		REAR-END	FOL-CLOSE	DYLG	DRY	P INJ	09-25-2020
51	30	51		00.47	MARTIN LUTHER/FOND		YES	Y	W	N	2			REAR-END	IMP-BACK	DARK	DRY	PDO	11-16-2020
51	30	51		00.47	MARTIN LUTHER/FOND		YES	Y	S	S	2			REAR-END	FOL-CLOSE	DYLG	DRY	PDO	03-03-2021
51	30	51		00.47	MARTIN LUTHER/FOND		YES	Y	S	W	2	1		RIGHT-ANGLE	F-STOP	DARK	WET	P INJ	03-12-2021
51	30	51		00.47	MARTIN LUTHER/FOND		YES	Y	S	W	2			RIGHT-ANGLE	F-STOP	DYLG	DRY	PDO	05-01-2021
51	30	51		00.47	MARTIN LUTHER/FOND		YES	Y	S	E	2	2		RIGHT-ANGLE	F-YIELD	DYLG	DRY	P INJ	05-04-2021
51	30	51		00.47	MARTIN LUTHER/FOND		YES	Y	E	S	2			ANGLE-TURNING	IMP-TURN	DYLG	DRY	PDO	11-16-2021
51	30	51		00.47	MARTIN LUTHER/FOND		YES	Y	E	S	2	1		RIGHT-ANGLE		DYLG	WET	N-I INJ	01-15-2022
51	30	51		00.47	MARTIN LUTHER/FOND		YES	Y	S	S	3	1		OTHER	FOL-CLOSE	DYLG	DRY	N-I INJ	04-14-2022
51	30	51		00.47	MARTIN LUTHER/FOND		YES	Y	E	S	2	1		RIGHT-ANGLE	OTHER	DYLG	WET	P INJ	10-25-2022
51	30	51		00.47	MARTIN LUTHER/FOND		YES	Y	E	-	1	1		PEDESTRIAN		DYLG	DRY	SS INJ	11-29-2022
51	30	51		00.47	MARTIN LUTHER/FOND		YES	Y	E	W	2			OTHER	F-YIELD	DYLG	DRY	PDO	04-14-2023
51	30	51		00.47	MARTIN LUTHER/FOND		YES	Y	E	N	2	3		RIGHT-ANGLE	D-W-I	DARK	DRY	SS INJ	11-04-2023
(51) MUSKOGEE				(30) MUSKOGEE		HWY: US-62B, MAIN ST.						AT: GIRARD ST.							
51	30	51		00.61	GIRARD ST.		YES	Y	N	N	2			REAR-END	D-W-I	DYLG	DRY	PDO	04-16-2019
51	30	51		00.61	GIRARD ST.		YES	Y	S	S	2			REAR-END	F-STOP	DYLG	DRY	PDO	10-01-2021
(51) MUSKOGEE				(30) MUSKOGEE		HWY: US-62B, MAIN ST.						AT: 00.01 after GIRARD ST.							
51	30	51		00.62			NO	Y	N	N	2			SIDESWIPE-SAME	F-YIELD	DYLG	DRY	PDO	11-22-2022
(51) MUSKOGEE				(30) MUSKOGEE		HWY: US-62B, MAIN ST.						AT: HOWARD ST.							
51	30	51		00.70	HOWARD ST.		YES	Y	N	N	2			REAR-END	FOL-CLOSE	DYLG	DRY	PDO	01-25-2018
51	30	51		00.70	HOWARD ST.		YES	Y	N	N	2	4		REAR-END	FOL-CLOSE	DYLG	DRY	P INJ	01-02-2020

* INCLUDES SUSPECTED SERIOUS, NON-INCAPACITATING, AND POSSIBLE INJURIES.



HIGHWAY SYSTEM COLLISION LISTING

Date Range: 01-01-2017 Thru 12-18-2024

Program Provided by:
 Traffic Engineering Division
 Collision Analysis and Safety Branch
 (405) 522-0985
 Created: 12/18/2024 by Stephen Waldrop

USE

				HIGHWAY COLLISIONS			CITY STREET COLLISIONS			COUNTY ROAD COLLISIONS					TOTAL COLLISIONS				
Cnty	City	CS #	Int. #	Mile Post	Location	Features	Int. Related	On Map	Dir. 1	Dir. 2	# Veh.	# Inj.*	# Fat.	Type of Collision	Unsafe Unlawful	Lighting Cond.	Roadway Cond.	Severity	Date
51	30	51		00.70	HOWARD ST.		YES	Y	S	S	2	1		REAR-END	INATT	DYLGT	DRY	P INJ	05-07-2020
51	30	51		00.70	HOWARD ST.		YES	Y	N	N	2			REAR-END	FOL-CLOSE	DYLGT	DRY	PDO	01-05-2021
51	30	51		00.70	HOWARD ST.		YES	Y	N	N	2	1		REAR-END	FOL-CLOSE	DYLGT	DRY	N-I INJ	09-08-2021
(51) MUSKOGEE				(30) MUSKOGEE HWY: US-62B, MAIN ST.			AT: 00.04 before IOLA ST.												
51	30	51		00.75			NO	Y	S	-	3	3		F-O UTIL-POLE	OTHER	DYLGT	DRY	N-I INJ	06-05-2020
(51) MUSKOGEE				(30) MUSKOGEE HWY: US-62B, MAIN ST.			AT: IOLA ST.												
51	30	51		00.79	IOLA ST.		YES	Y	N	N	2			REAR-END	IMP-LN-CHG	DYLGT	DRY	PDO	06-01-2018
51	30	51		00.79	IOLA ST.		YES	Y	E	N	2	1		RIGHT-ANGLE	F-YIELD	DYLGT	DRY	P INJ	06-17-2019
51	30	51		00.79	IOLA ST.		YES	Y	E	E	2			REAR-END	IMP-BACK	DYLGT	DRY	PDO	03-04-2021
(51) MUSKOGEE				(30) MUSKOGEE HWY: US-62B, MAIN ST.			AT: 00.01 after JOPLIN ST.												
51	30	51		00.89			NO	Y	S	S	2	1		SIDESWIPE-SAME	IMP-LN-CHG	DYLGT	ICE	P INJ	02-28-2019
51	30	51		00.89		TRAFFIC BACKUP	NO	Y	N	N	2			REAR-END	INATT	DYLGT	DRY	PDO	03-02-2020
(51) MUSKOGEE				(30) MUSKOGEE HWY: US-62B, MAIN ST.			AT: KINSEY ST.												
51	30	51		00.97	KINSEY ST.		YES	Y	N	N	2	4		REAR-END	FOL-CLOSE	DYLGT	DRY	SS INJ	02-22-2017
51	30	51		00.97	KINSEY ST.		YES	Y	S	S	2			REAR-END	INATT	DYLGT	WET	PDO	11-06-2017
51	30	51		00.97	KINSEY ST.		YES	Y	N	-	1			ANIMAL	OTH-ANIMAL	DARK	DRY	PDO	03-15-2018
51	30	51		00.97	KINSEY ST.		YES	Y	E	N	2	1		ANGLE-TURNING	F-YIELD	DYLGT	DRY	SS INJ	04-17-2018
51	30	51		00.97	KINSEY ST.		YES	Y	S	S	2	1		REAR-END	FOL-CLOSE	DYLGT	DRY	SS INJ	05-14-2018
51	30	51		00.97	KINSEY ST.		YES	Y	N	N	2	2		REAR-END	FOL-CLOSE	DARK	DRY	N-I INJ	09-09-2018
51	30	51		00.97	KINSEY ST.		YES	Y	W	N	2	2		RIGHT-ANGLE	F-YIELD	DYLGT	DRY	SS INJ	11-27-2019
51	30	51		00.97	KINSEY ST.		YES	Y	E	N	2			OTHER	F-YIELD	DYLGT	DRY	PDO	03-08-2023
(51) MUSKOGEE				(30) MUSKOGEE HWY: US-62B, MAIN ST.			AT: 00.01 after KINSEY ST.												
51	30	51		00.98		DRIVEWAY	NO	Y	W	N	2			ANGLE-TURNING	F-YIELD	DYLGT	DRY	PDO	04-04-2017
(51) MUSKOGEE				(30) MUSKOGEE HWY: US-62B, MAIN ST.			AT: 00.02 after KINSEY ST.												
51	30	51		00.99		DRIVEWAY	NO	Y	N	N	2			SIDESWIPE-SAME	IMP-LN-CHG	DYLGT	DRY	PDO	11-03-2022
(51) MUSKOGEE				(30) MUSKOGEE HWY: US-62B, MAIN ST.			AT: 00.14 after KINSEY ST.												
51	30	51		01.11		DRIVEWAY	NO	Y	S	N	3	3		ANGLE-TURNING	F-YIELD	DYLGT	WET	SS INJ	09-21-2018
(51) MUSKOGEE				(30) MUSKOGEE HWY: US-62B, MAIN ST.			AT: 00.15 after KINSEY ST.												
51	30	51		01.12		DRIVEWAY	NO	Y	N	N	2	1		REAR-END	FOL-CLOSE	DYLGT	DRY	N-I INJ	09-14-2018
(51) MUSKOGEE				(30) MUSKOGEE HWY: US-62B, MAIN ST.			AT: 00.16 after KINSEY ST.												
51	30	51		01.13			NO	Y	N	N	2	1		REAR-END	FOL-CLOSE	DYLGT	DRY	P INJ	11-22-2017
(51) MUSKOGEE				(30) MUSKOGEE HWY: US-62B, MAIN ST.			AT: 00.18 after KINSEY ST.												
51	30	51		01.15			NO	Y	S	S	2			REAR-END	FOL-CLOSE	DYLGT	WET	PDO	05-16-2018
(51) MUSKOGEE				(30) MUSKOGEE HWY: US-62B, MAIN ST.			AT: 00.17 before MILL ST.-KAAD												
51	30	51		01.17			NO	Y	N	N	2			REAR-END	D-W-I	DYLGT	DRY	PDO	12-19-2019
(51) MUSKOGEE				(30) MUSKOGEE HWY: US-62B, MAIN ST.			AT: MILL ST.-KAAD												
51	30	51		01.34	MILL ST.-KAAD		YES	Y	S	S	2			SIDESWIPE-SAME	IMP-LN-CHG	DYLGT	DRY	PDO	01-14-2021

* INCLUDES SUSPECTED SERIOUS, NON-INCAPACITATING, AND POSSIBLE INJURIES.



HIGHWAY SYSTEM COLLISION LISTING

Date Range: 01-01-2017 Thru 12-18-2024

Program Provided by:
 Traffic Engineering Division
 Collision Analysis and Safety Branch
 (405) 522-0985
 Created: 12/18/2024 by Stephen Waldrop

USE

				HIGHWAY COLLISIONS			CITY STREET COLLISIONS			COUNTY ROAD COLLISIONS					TOTAL COLLISIONS				
Cnty	City	CS #	Int. #	Mile Post	Location	Features	Int. Related	On Map	Dir. 1	Dir. 2	# Veh.	# Inj.*	# Fat.	Type of Collision	Unsafe Unlawful	Lighting Cond.	Roadway Cond.	Severity	Date
51	30	51		01.34	MILL ST.-KAAD		YES	Y	W	N	2			RIGHT-ANGLE	IMP-PASS	DYLGT	DRY	PDO	09-24-2021
51	30	51		01.34	MILL ST.-KAAD		YES	Y	N	N	2	1		ANGLE-TURNING	IMP-TURN	DYLGT	DRY	N-I INJ	07-01-2023
(51) MUSKOGEE				(30) MUSKOGEE HWY: US-62B, MAIN ST.			AT: 00.01 after MILL ST.-KAAD												
51	30	51		01.35		DRIVEWAY	NO	Y	E	S	2	1		RIGHT-ANGLE	F-YIELD	DYLGT	WET	N-I INJ	10-03-2017
(51) MUSKOGEE				(30) MUSKOGEE HWY: US-62B, MAIN ST.			AT: 00.02 after MILL ST.-KAAD												
51	30	51		01.36		DRIVEWAY	NO	Y	S	S	2			ANGLE-TURNING	F-YIELD	DYLGT	DRY	PDO	06-12-2018
(51) MUSKOGEE				(30) MUSKOGEE HWY: US-62B, MAIN ST.			AT: 00.03 before TALLEADEGA												
51	30	51		01.37		X-MEDIAN	NO	Y	N	-	1	2		OTHER	UNSAF-SPD	DARK	ICE	N-I INJ	02-10-2018
(51) MUSKOGEE				(30) MUSKOGEE HWY: US-62B, MAIN ST.			AT: 00.03 after TALLEADEGA												
51	30	51		01.43		MEDIAN OPNIN	NO	Y	N	-	1			OTHER	INATT	DYLGT	DRY	PDO	05-21-2020
(51) MUSKOGEE				(30) MUSKOGEE HWY: US-62B, MAIN ST.			AT: 00.02 before TP RR #797354W												
51	30	51		01.50		DRIVEWAY	NO	Y	N	N	2			REAR-END	FOL-CLOSE	DARK	DRY	PDO	11-29-2017
51	30	51		01.50			NO	Y	N	N	2	1		SIDESWIPE-SAME	IMP-PASS	DYLGT	DRY	N-I INJ	06-16-2021
(51) MUSKOGEE				(30) MUSKOGEE HWY: US-62B, MAIN ST.			AT: 00.01 before TP RR #797354W												
51	30	51		01.51		DRIVEWAY	NO	Y	S	N	2	1		RIGHT-ANGLE	OTHER	DYLGT	DRY	P INJ	12-21-2017
(51) MUSKOGEE				(30) MUSKOGEE HWY: US-62B, MAIN ST.			AT: DOUGLASS AVE.												
51	30	51		01.54	DOUGLASS AVE.		YES	Y	N	N	2			REAR-END	F-YIELD	OTHER	WET	PDO	10-04-2017
51	30	51		01.54	DOUGLASS AVE.		YES	Y	N	N	2			REAR-END	FOL-CLOSE	DYLGT	DRY	PDO	04-23-2018
51	30	51		01.54	DOUGLASS AVE.		YES	Y	N	N	2	1		ANGLE-TURNING	IMP-TURN	DYLGT	DRY	P INJ	05-10-2019
51	30	51		01.54	DOUGLASS AVE.		YES	Y	N	N	2			REAR-END	FOL-CLOSE	DYLGT	DRY	PDO	12-03-2019
51	30	51		01.54	DOUGLASS AVE.		YES	Y	E	S	2	1		ANGLE-TURNING	F-YIELD	DYLGT	DRY	SS INJ	09-03-2021
51	30	51		01.54	DOUGLASS AVE.		YES	Y	S	S	3	1		REAR-END	INATT	DYLGT	DRY	P INJ	06-02-2023
(51) MUSKOGEE				(30) MUSKOGEE HWY: US-62B, MAIN ST.			AT: 00.01 after DOUGLASS AVE.												
51	30	51		01.55			NO	Y	S	S	2	1		REAR-END	FOL-CLOSE	DYLGT	DRY	P INJ	06-10-2022
(51) MUSKOGEE				(30) MUSKOGEE HWY: US-62B, MAIN ST.			AT: 00.02 after DOUGLASS AVE.												
51	30	51		01.56			NO	Y	N	N	2			REAR-END	FOL-CLOSE	DARK	DRY	PDO	12-05-2020
(51) MUSKOGEE				(30) MUSKOGEE HWY: US-62B, MAIN ST.			AT: 00.04 after DOUGLASS AVE.												
51	30	51		01.58		DRIVEWAY	NO	Y	S	S	2			ANGLE-TURNING	F-YIELD	DYLGT	DRY	PDO	08-27-2018
51	30	51		01.58		DRIVEWAY	NO	Y	W	N	2			RIGHT-ANGLE	F-YIELD	DYLGT	DRY	PDO	06-15-2021
(51) MUSKOGEE				(30) MUSKOGEE HWY: US-62B, MAIN ST.			AT: 00.05 after DOUGLASS AVE.												
51	30	51		01.59		DRIVEWAY	NO	Y	E	N	2			ANGLE-TURNING	F-YIELD	DYLGT	DRY	PDO	09-16-2019
51	30	51		01.59		DRIVEWAY	NO	Y	N	N	2			REAR-END	FOL-CLOSE	DYLGT	WET	PDO	07-29-2020
51	30	51		01.59		TRAFFIC BACKUP	NO	Y	N	N	2			REAR-END	FOL-CLOSE	DUSK	DRY	PDO	12-18-2020
(51) MUSKOGEE				(30) MUSKOGEE HWY: US-62B, MAIN ST.			AT: 00.05 before SHAWNEE AVE.												
51	30	51		01.60		DRIVEWAY	NO	Y	W	N	2	2		OTHER		DYLGT	DRY	P INJ	01-04-2023
(51) MUSKOGEE				(30) MUSKOGEE HWY: US-62B, MAIN ST.			AT: 00.03 before SHAWNEE AVE.												
51	30	51		01.62			NO	Y	S	S	2			OTHER	FOL-CLOSE	DYLGT	DRY	PDO	05-15-2023
(51) MUSKOGEE				(30) MUSKOGEE HWY: US-62B, MAIN ST.			AT: 00.01 before SHAWNEE AVE.												

* INCLUDES SUSPECTED SERIOUS, NON-INCAPACITATING, AND POSSIBLE INJURIES.



HIGHWAY SYSTEM COLLISION LISTING

Date Range: 01-01-2017 Thru 12-18-2024

Program Provided by:
 Traffic Engineering Division
 Collision Analysis and Safety Branch
 (405) 522-0985
 Created: 12/18/2024 by Stephen Waldrop

USE

				HIGHWAY COLLISIONS			CITY STREET COLLISIONS			COUNTY ROAD COLLISIONS					TOTAL COLLISIONS				
Cnty	City	CS #	Int. #	Mile Post	Location	Features	Int. Related	On Map	Dir. 1	Dir. 2	# Veh.	# Inj.*	# Fat.	Type of Collision	Unsafe Unlawful	Lighting Cond.	Roadway Cond.	Severity	Date
51	30	51		01.64		TRAFFIC BACKUP	NO	Y	N	N	2	3		REAR-END	FOL-CLOSE	DYLGT	WET	N-I INJ	01-17-2020
51	30	51		01.64		DRIVEWAY	NO	Y	N	N	2	2		ANGLE-TURNING	F-YIELD	DYLGT	WET	P INJ	03-13-2020
(51) MUSKOGEE				(30) MUSKOGEE HWY: US-64B, NAT IRISH EXP.			AT: 00.06 after BEG 55 MPH												
51	30	54		00.64			NO	Y	S	-	1	2		OTHER	UNSAF-SPD	DARK	ICE	N-I INJ	02-10-2018
(51) MUSKOGEE				(30) MUSKOGEE HWY: US-64B, NAT IRISH EXP.			AT: 00.07 before HANCOCK RD.												
51	30	54		01.03			NO	Y	N	N	2	2		REAR-END	OTHER	DYLGT	DRY	N-I INJ	03-02-2022
(51) MUSKOGEE				(30) MUSKOGEE HWY: US-64B, NAT IRISH EXP.			AT: HANCOCK RD.												
51	30	54		01.10	HANCOCK RD.		YES	Y	E	S	2	1		ANGLE-TURNING	F-YIELD	DYLGT	DRY	P INJ	05-14-2019
51	30	54		01.10	HANCOCK RD.		YES	Y	S	N	2			ANGLE-TURNING	IMP-TURN	DYLGT	DRY	PDO	01-06-2020
51	30	54		01.10	HANCOCK RD.		YES	Y	W	E	2			OTHER	NEG-DRVING	DARK	DRY	PDO	01-31-2020
51	30	54		01.10	HANCOCK RD.		YES	Y	E	S	2	1		RIGHT-ANGLE	F-YIELD	DYLGT	DRY	N-I INJ	10-08-2020
(51) MUSKOGEE				(30) MUSKOGEE HWY: US-64B, NAT IRISH EXP.			AT: 00.09 after AUGUSTA ST.												
51	30	54		01.79			NO	Y	S	S	2			SIDESWIPE-SAME	IMP-LN-CHG	DYLGT	DRY	PDO	04-23-2018
(51) MUSKOGEE				(30) MUSKOGEE HWY: US-64B, MAIN ST.			AT: KALAMAZOO AVE.												
51	30	54		02.04	KALAMAZOO AVE.		YES	Y	N	N	2			ANGLE-TURNING	F-YIELD	DYLGT	DRY	PDO	09-08-2022
(51) MUSKOGEE				(30) MUSKOGEE HWY: US-64B, MAIN ST.			AT: 00.04 after BEG 35 MPH												
51	30	54		02.18			NO	Y	S	S	2			ANGLE-OTHER	IMP-TURN	DYLGT	WET	PDO	01-07-2017
(51) MUSKOGEE				(30) MUSKOGEE HWY: US-64B, MAIN ST.			AT: 00.02 before INDEPENDENCE/S.SID												
51	30	54		02.22			NO	Y	N	-	1	1		OTHER	OTHER	DYLGT	DRY	N-I INJ	07-01-2020
(51) MUSKOGEE				(30) MUSKOGEE HWY: US-64B, MAIN ST.			AT: INDEPENDENCE/S.SID												
51	30	54		02.24	INDEPENDENCE/S.SID		YES	Y	S	E	2			ANGLE-TURNING	F-YIELD	DYLGT	DRY	PDO	01-20-2017
51	30	54		02.24	INDEPENDENCE/S.SID		YES	Y	W	W	2			ANGLE-TURNING	IMP-TURN	DYLGT	DRY	PDO	03-20-2017
51	30	54		02.24	INDEPENDENCE/S.SID		YES	Y	E	E	2			ANGLE-TURNING	F-YIELD	DYLGT	DRY	PDO	06-13-2017
51	30	54		02.24	INDEPENDENCE/S.SID		YES	Y	W	S	2	1		ANGLE-TURNING	UNSAF-SPD	DYLGT	DRY	N-I INJ	09-04-2017
51	30	54		02.24	INDEPENDENCE/S.SID		YES	Y	N	E	2	2		ANGLE-TURNING	F-YIELD	DARK	DRY	P INJ	12-12-2017
51	30	54		02.24	INDEPENDENCE/S.SID		YES	Y	S	S	2			REAR-END	FOL-CLOSE	DYLGT	DRY	PDO	05-15-2018
51	30	54		02.24	INDEPENDENCE/S.SID		YES	Y	S	S	2			REAR-END	INATT	DARK	DRY	PDO	11-19-2018
51	30	54		02.24	INDEPENDENCE/S.SID		YES	Y	N	W	2	1		RIGHT-ANGLE	F-STOP	DYLGT	DRY	N-I INJ	06-08-2019
51	30	54		02.24	INDEPENDENCE/S.SID		YES	Y	S	W	2			RIGHT-ANGLE	F-YIELD	DYLGT	DRY	PDO	03-14-2020
51	30	54		02.24	INDEPENDENCE/S.SID		YES	Y	N	W	2	2		RIGHT-ANGLE	OTHER	DYLGT	DRY	N-I INJ	04-10-2020
51	30	54		02.24	INDEPENDENCE/S.SID		YES	Y	E	N	2	2		ANGLE-TURNING		DYLGT	DRY	P INJ	02-22-2022
51	30	54		02.24	INDEPENDENCE/S.SID		YES	Y	E	N	2	2		OTHER		DYLGT	DRY	P INJ	08-20-2023
(51) MUSKOGEE				(30) MUSKOGEE HWY: US-64B, MAIN ST.			AT: 00.14 after INDEPENDENCE/S.SID												
51	30	54		02.38			NO	Y	S	-	1			OTH-SINGLE-VEH	NO-IMP-ACT	DYLGT	DRY	PDO	03-21-2017
(51) MUSKOGEE				(30) MUSKOGEE HWY: US-64B, MAIN ST.			AT: ELGIN												
51	30	54		02.56	ELGIN		YES	Y	E	S	2			RIGHT-ANGLE	F-YIELD	DYLGT	DRY	PDO	04-06-2017
51	30	54		02.56	ELGIN		YES	Y	S	-	1	1		PEDAL-CYCLE	OTHER	DARK	DRY	N-I INJ	05-20-2017

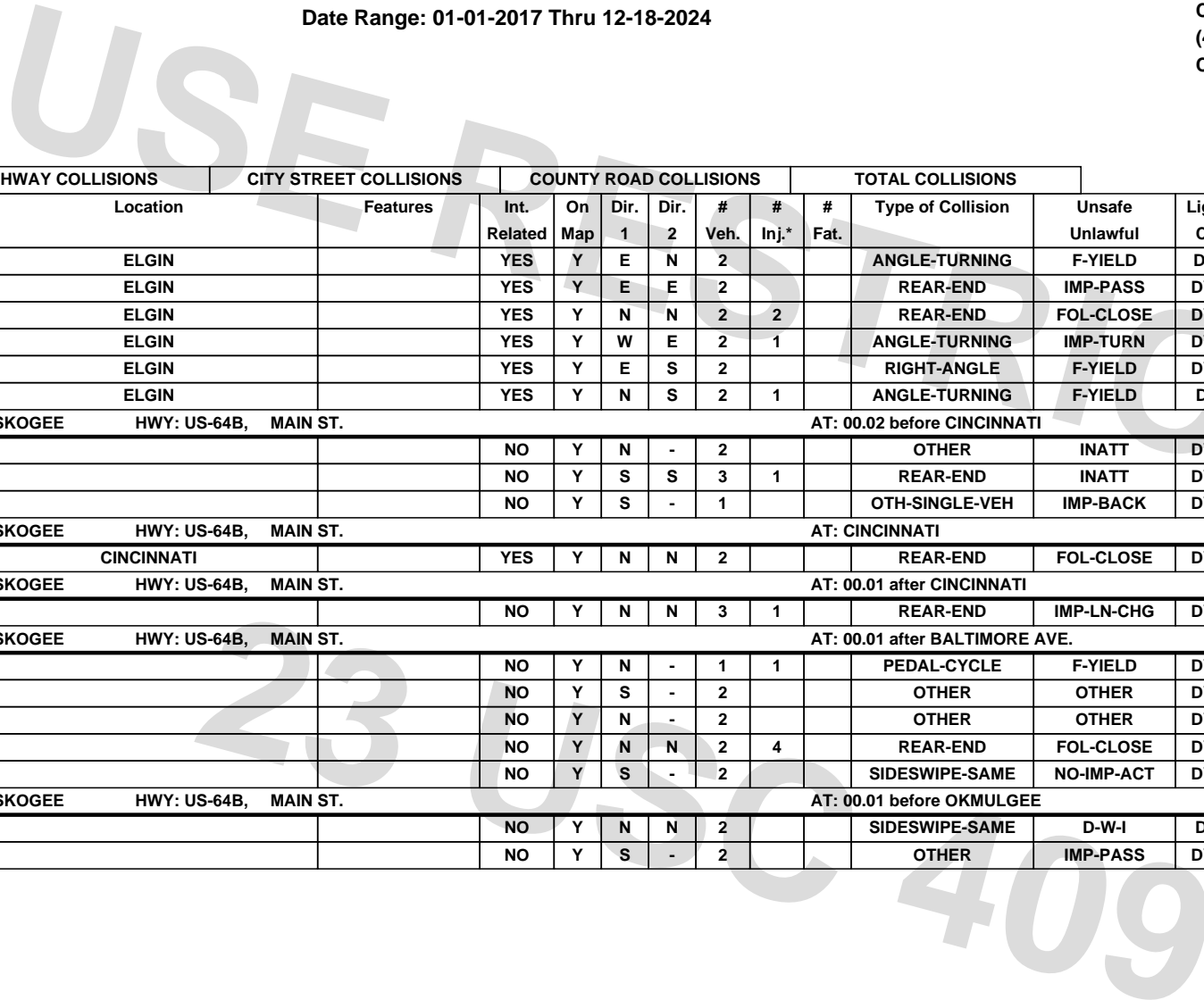
* INCLUDES SUSPECTED SERIOUS, NON-INCAPACITATING, AND POSSIBLE INJURIES.



HIGHWAY SYSTEM COLLISION LISTING

Date Range: 01-01-2017 Thru 12-18-2024

Program Provided by:
 Traffic Engineering Division
 Collision Analysis and Safety Branch
 (405) 522-0985
 Created: 12/18/2024 by Stephen Waldrop



				HIGHWAY COLLISIONS		CITY STREET COLLISIONS		COUNTY ROAD COLLISIONS					TOTAL COLLISIONS						
Cnty	City	CS #	Int. #	Mile Post	Location	Features	Int. Related	On Map	Dir. 1	Dir. 2	# Veh.	# Inj.*	# Fat.	Type of Collision	Unsafe Unlawful	Lighting Cond.	Roadway Cond.	Severity	Date
51	30	54		02.56	ELGIN		YES	Y	E	N	2			ANGLE-TURNING	F-YIELD	DAWN	DRY	PDO	03-06-2019
51	30	54		02.56	ELGIN		YES	Y	E	E	2			REAR-END	IMP-PASS	DYLGT	DRY	PDO	05-09-2019
51	30	54		02.56	ELGIN		YES	Y	N	N	2	2		REAR-END	FOL-CLOSE	DYLGT	DRY	P INJ	06-21-2019
51	30	54		02.56	ELGIN		YES	Y	W	E	2	1		ANGLE-TURNING	IMP-TURN	DYLGT	DRY	P INJ	10-15-2020
51	30	54		02.56	ELGIN		YES	Y	E	S	2			RIGHT-ANGLE	F-YIELD	DYLGT	DRY	PDO	11-12-2021
51	30	54		02.56	ELGIN		YES	Y	N	S	2	1		ANGLE-TURNING	F-YIELD	DUSK	DRY	P INJ	12-01-2022
(51) MUSKOGEE				(30) MUSKOGEE		HWY: US-64B, MAIN ST.							AT: 00.02 before CINCINNATI						
51	30	54		02.60			NO	Y	N	-	2			OTHER	INATT	DYLGT	DRY	PDO	07-14-2017
51	30	54		02.60			NO	Y	S	S	3	1		REAR-END	INATT	DYLGT	DRY	P INJ	02-12-2018
51	30	54		02.60			NO	Y	S	-	1			OTH-SINGLE-VEH	IMP-BACK	DYLGT	DRY	PDO	12-05-2019
(51) MUSKOGEE				(30) MUSKOGEE		HWY: US-64B, MAIN ST.							AT: CINCINNATI						
51	30	54		02.62	CINCINNATI		YES	Y	N	N	2			REAR-END	FOL-CLOSE	DYLGT	DRY	PDO	10-16-2019
(51) MUSKOGEE				(30) MUSKOGEE		HWY: US-64B, MAIN ST.							AT: 00.01 after CINCINNATI						
51	30	54		02.63			NO	Y	N	N	3	1		REAR-END	IMP-LN-CHG	DYLGT	DRY	P INJ	09-26-2020
(51) MUSKOGEE				(30) MUSKOGEE		HWY: US-64B, MAIN ST.							AT: 00.01 after BALTIMORE AVE.						
51	30	54		02.65			NO	Y	N	-	1	1		PEDAL-CYCLE	F-YIELD	DYLGT	DRY	N-I INJ	08-14-2017
51	30	54		02.65			NO	Y	S	-	2			OTHER	OTHER	DYLGT	DRY	PDO	09-20-2017
51	30	54		02.65			NO	Y	N	-	2			OTHER	OTHER	DYLGT	DRY	PDO	03-20-2019
51	30	54		02.65			NO	Y	N	N	2	4		REAR-END	FOL-CLOSE	DYLGT	WET	N-I INJ	12-21-2019
51	30	54		02.65			NO	Y	S	-	2			SIDESWIPE-SAME	NO-IMP-ACT	DYLGT	DRY	PDO	11-08-2021
(51) MUSKOGEE				(30) MUSKOGEE		HWY: US-64B, MAIN ST.							AT: 00.01 before OKMULGEE						
51	30	54		02.75			NO	Y	N	N	2			SIDESWIPE-SAME	D-W-I	DARK	DRY	PDO	07-13-2018
51	30	54		02.75			NO	Y	S	-	2			OTHER	IMP-PASS	DYLGT	WET	PDO	10-30-2019

* INCLUDES SUSPECTED SERIOUS, NON-INCAPACITATING, AND POSSIBLE INJURIES.



STUDY CRITERIA

Date Range: 01-01-2017 Thru 12-18-2024

Program Provided by:
 Traffic Engineering Division
 Collision Analysis and Safety Branch
 (405) 522-0985
 Created: 12/18/2024 by Stephen Waldrop

ROADWAY / REGION

QUERY OVER		SELECTIONS
1	Control Section	County: 51, Control Section: 54, CS Type: hwy, CS Query On: range, Mile Start: 00.00, Mile End: 02.76
2	Control Section	County: 51, Control Section: 51, CS Type: hwy, CS Query On: range, Mile Start: 00.00, Mile End: 01.67
3	Control Section	County: 51, Control Section: 47, CS Type: hwy, CS Query On: range, Mile Start: 00.00, Mile End: 03.50
4	Control Section	County: 51, Control Section: 44, CS Type: hwy, CS Query On: range, Mile Start: 00.00, Mile End: 01.24

DATE

Date Range	01-01-2017 to 12-18-2024
------------	--------------------------

FILTER COLLISIONS

Roadway Type	All Collision Data
Incl. Crashes Assoc. w/ Every Int.	Checked
Term. Loc. Only In Interchanges	Checked
Environment Fields	

REPORT SECTIONS

Collision Map & Study Totals	(Included)
Collision Analysis Tables	(Included)
- Totals By City, Hwy Class	Checked
- Other Analysis Tables	Checked
Collision Listing	(Included)
- Highway Collision Listing	Checked, By Control Section
- City Street Collision Listing	Checked
- County Road Collision Listing	Checked
Query Criteria	(Included)

REPORT FORMAT OPTIONS

Print Watermark	Checked
Print DPS Case Numbers	Unchecked