



Date of Issuance: 4/04/24

Solicitation No. 3450005043

Requisition No. 3450034209

Amendment No. 1

Hour and date specified for receipt of offers is changed: No Yes, to: _____ CST

Pursuant to OAC 260:115-7-30(d), this document shall serve as official notice of amendment to the solicitation identified above. Such notice is being provided to all suppliers to which the original solicitation was sent.

Suppliers submitting bids or quotations shall acknowledge receipt of this solicitation amendment prior to the hour and date specified in the solicitation as follows:

Sign and return a copy of this amendment with the solicitation response being submitted; or,

If the supplier has already submitted a response, this acknowledgement must be signed and returned prior to the solicitation deadline. All amendment acknowledgements submitted separately shall have the solicitation number and bid opening date in the subject line of the email.

ISSUED FROM:

Cheryl Emerson
Contracting Officer

405-628-3318
Phone Number

cemerson@odot.org
E-Mail Address

RETURN TO: odotbids@odot.ok.gov with Contractor Response

Description of Amendment:

a. This is to incorporate the following:

This Amendment covers the following:

Question 1. Are there Full Plan Sheets Available?
Answer: Please see the following attached files: Scope of Work, Light Plan NB I-35 Rest Area, NB Rest Area Love County light plan highlighted Circuit routes, and LED Lights..

Question 2. What is the Scope of Work and are there any pictures?
Answer: See attached Scope of Work. There are no pictures.

Question 3. What type of lights?
Answer: Please See attached file for LED Lights.

b. All other terms and conditions remain unchanged.

Supplier Company Name (**PRINT**) Date

Authorized Representative Name (**PRINT**) Title Authorized Representative Signature

SCOPE OF WORK

Option #1:

Replace the lights in the center high mast west of the Welcome center with LED lights and restore them to function.

Replace all the trail lighting except for the one located at the kiosk. There is one light located just north of the building that the light fixture will need to be replaced but can remain on its current circuit. The remainder of the trail lighting are located on the south side of the building. Light heads will be replaced with LED light heads. Modify the existing wiring so that lights are on their own circuit separate from the parking area lights with their own breaker and photocell. The trail lights will also be powered by the existing Service Pole #1 located on Sheet 16 of the plans. This modification will require running a new underground electric line from the service pole to the point the current trail light circuit connect to the parking light circuit.

Option #2:

Replace all ramp and parking lot lighting with LED lights, including the three high mast lighting and return the center high mass lighting to a state function. Replace all trail lighting except for one which is at the very north end of the park by the kiosk. Replace the one located just north of the building and leave on the existing circuit. The remainder of the trail lighting are located on the south side of the building. Light heads will be replaced with LED lights. The trail lights will be powered by the existing Service Pole #1 located on Sheet 16 of the plans. Modify the existing wiring so that lights are on their own circuit separate from the parking area lights with their own breaker and photocell. The trail lights will also be powered by the existing Service Pole #1 located on Sheet 16 of the plans. This modification will require running a new underground electric line from the service pole to the point the current trail light circuit connect to the parking light circuit.

2 copies of the plan set are included.

1. Copy of plan
2. Copy where we traced current wiring is highlighted. Note: Always check power to ensure your safety.
3. LED light specification sheet, light used will equivalent to these specification.

TECHNICAL DATA

POWER CONSUMPTION – Saves 50-70%.

EXPECTED LED LIFE – 100,000 hrs.

LED TECHNOLOGY – Latest technology on Hi-Flux LEDs, Minimal CRI of 70.

OPTICS – Special optical lens design to maximize light output & uniformity. Each lens allows the fixture to generate different lighting patterns. Field rotatable optics to allow shooting pattern aligning travel lanes.

DISTRIBUTION LAYOUT – Available: Type II, III, and V.

OPERATING TEMPERATURE – -40 C° ~ +70 C°.

HOUSING – Die cast aluminum housing with powder coat finish. Single, self-contained device, not requiring on-site assembly for installation, designed to prevent the buildup of water and accumulated debris. Tool-less entry housing. Watertight, IP66.

THERMAL MANAGEMENT – Heat sink fins are incorporated into the external design to allow for dispensing heat. 3G vibration testing per ANSI C136.31.

MOUNTING – Up to ± 5° mounting angle adjustability. Slip-fit mounting for easy installation on tenon and ring assembly.

ELECTRICAL FEATURES – Integral power surge protector tested in conformance to ANSI/IEEE C62.45 procedures. Comes with a variable voltage power supply either 100-277VAC or 247-528VAC.

LUMINAIRE EFFICACY – ≥ 125 lm/w.

COLOR CORRELATED TEMPERATURE (CCT) – 3,000K to 5,000K

Testing Conformance:

- Safety Listing- UL 1598, 40C, Wet Location
- Harmonic Control Electrical Power Systems – IEEE 519
- Harmonic Distortion – ANSI C82.77
- Degrees of Protection by Enclosure (IP) IEC 61000 – EMC – IEC 60529
- Surge Protection – ANSI/IEEE C62.41
- Luminaire Vibration – ANSI C136.31
- Salt Spray Test – ASTM B117
- Environment Test – IEC 60068
- FCC Title 47 CFP Part 18

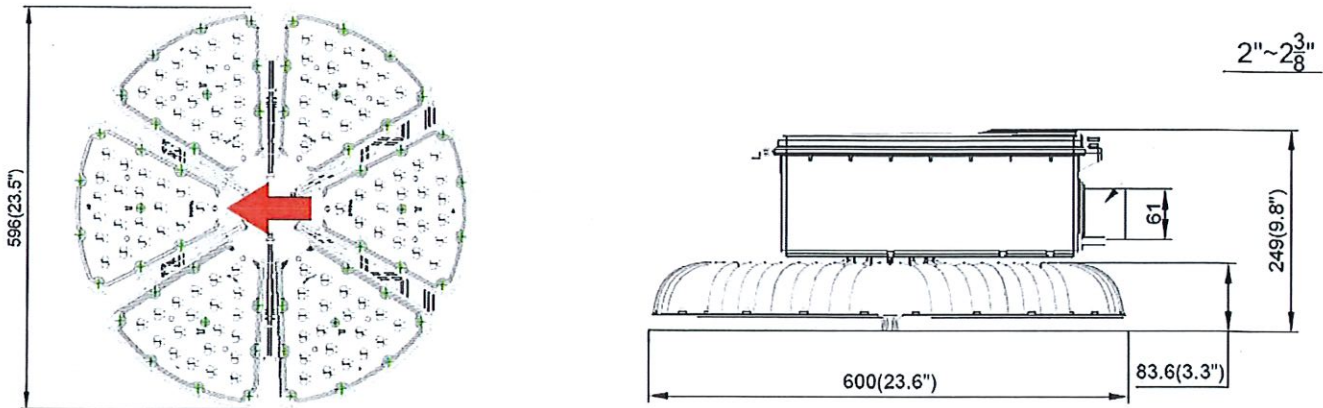


NEIGHBORHOOD FRIENDLY LENS & NUISANCE SHIELD

OPTIONS AVAILABLE

Model Number:	JXM-ST-HM6-410W	JXM-ST-HM6-500W	JXM-ST-HM6-550W	JXM-ST-HM6-600W
Wattage Level:	410W	500W	550W	600W
Lumen Output:	≈ 53000	≈ 66000	≈ 72000	≈ 79800
CRI:	> 70	> 70	> 70	> 70
Power Factor:	0.95	0.95	0.95	0.95
Weight (lbs.):	≤ 52	≤ 52	≤ 52	≤ 52
EPA (sq. ft.):	1.29	1.29	1.29	1.29

DIMENSIONS



ORDERING/OPTIONS

Example: JXM-ST-HM6-500W-40K-480-2-GR-SCLB

PREFIX	
--------	--

JXM DURALIGHT
LED

SERIES	
--------	--

ST Lighting
Series

WATTAGE LEVEL	
---------------	--

HM6-410W
HM6-500W
HM6-550W
HM6-600W

CCT	
-----	--

40K 4000K (± 300)
(Standard CCT)

VOLTAGE	
---------	--

120 120V – 277V
480 480V
(Standard Driver)

DISTRIBUTION	
--------------	--

2 Type 2
3 Type 3
5 Type 5

FINISH	
--------	--

GR Gray Housing
(Standard)
BK Black
BZ Bronze
SP Special Color
(Provide Chip)

OPTIONS	
---------	--

SC Shorting Cap
L Utility Label
B Bubble Level

NOTE: Color other than the standard Gray may incur an extra charge. Please contact us for additional information.

Standard:

7-Pin Photocontrol Receptacle ◦ Dimmable drive with 0-10V Control ◦ Internal bubble level ◦ ANSI C136.15 External Label
ANSI C136.22 Internal Label ◦ Two internal (600VAC, 10-amp, Class CC) time-delay fuses and fuse holders ◦ Barrier-type terminal block
in accordance with ANSI 136.14 and ANSI 136.37

Available Reports:

LM-79 from a NVLAP accredited test laboratory located in the USA ◦ ANSI C136.31 3G Vibration ◦ ASTM B117 AND QUV ASTM
G154 ◦ ANSI C136.25 IP66 ◦ SPD EMC ANSI C136.2 ◦ LM-80, ISTMT according to UL 1598 ◦ TM-21 analysis using Energy Star
TM-21 Calculator ◦ LLF Determination ◦ NRTL certification to UL 1598 ◦ Quality Management System ◦ ISO 9001 Certification ◦
Manufacturer's Verification Testing and Tracking ◦ IES

Project		Catalog #		Type	
Prepared by		Notes		Date	



Streetworks

UTLD Traditionaire

Decorative Post Top Luminaire

Typical Applications

Outdoor • Parking Lots • Walkways • Roadways • Building Areas

Interactive Menu

- Ordering Information [page 2](#)
- Product Specifications [page 2](#)
- Energy and Performance Data [page 3](#)

Product Certifications



Product Features

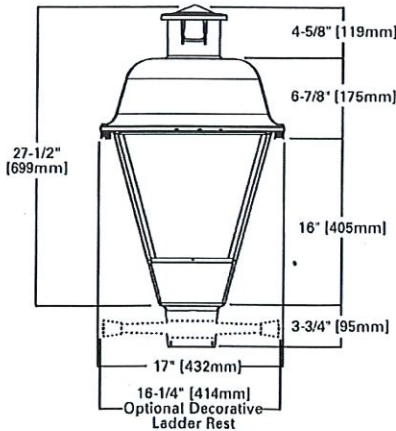


Quick Facts

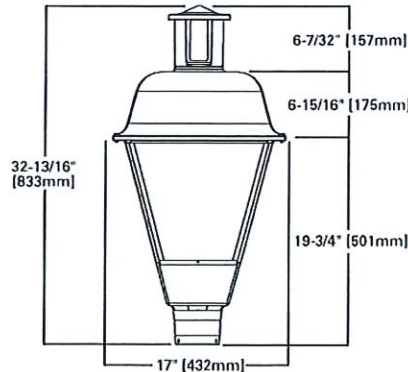
- Replaces up to 250W equivalent HID
- Asymmetric & Symmetric distributions
- 0-10V dimming driver standard
- UL 1449/MOV surge protection available
- 3G vibration rated

Dimensional Details

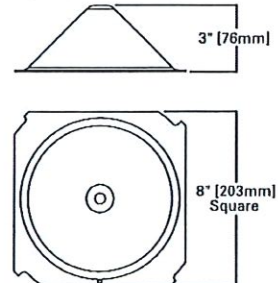
UTLD



UTLD - Tall Cupola



Optional Bird Cone



Ordering Information

SAMPLE NUMBER: UTLD-PA1-100-740-U-T2U-CL-BK

Product Family ¹	Configuration	Wattage Bucket	Color Temperature	Voltage	Distribution	Lens	Finish
UTLD=Traditionaire™ LED Downlight	PA1=Direct Mount Rectangle (24 LED)	20=20W ² 30=30W 40=40W 50=50W 60=60W 70=70W 80=80W 90=90W 100=100W	740=70CRL 4000K 727=70CRL 2700K ⁴ 827=80CRL 2700K ⁴ 730=70CRL 3000K ⁴ 750=70CRL 5000K ⁴ AMB=Amber 590nm	U=Universal (120-277V) 2=120V ⁴ 8=480V ^{4,5} 9=347V ⁴	T2U=Type II Urban T3=Type III T4W=Type IV Wide 5WQ=Type V Square Wide SL3=Type III w/ Spill Control	[Blank]=Open (No Lens) A=Refractive Lens Panels ⁸ CL=Clear Lens Panel ⁸ FP=Frosted Lens Panel ⁸ TL=Textured Lens Panel ⁸	BK=Black AP=Grey BZ=Bronze WH=White
Options (Add as Suffix)		Controls		Accessories (Order Separately)			
10K=Series 10kV UL 1449 Surge Protective Device 20K=Series 20kV UL 1449 Surge Protective Device 20KI=Series 20kV UL 1449 Surge Protective Device with light indicator 20MSP=Parallel 20kV MOV Surge Protective Device 10MSP=10kV MOV Surge Protection Device HA=50°C High Ambient Temperature ⁴ W=20' #10 Input Leads S=Snap Latches for Tool-less Light Replacement J=Factory Installed Ladder Rest BC=Bird Cone ⁹ HSS=Factory Install UTLD House Side Shield ¹¹ TC=Fall Cupola ¹¹ PSC=Photocontrol Shorting Cap NPC=NEMA Photocontrol - Multi-Tap LLPC=Longlife Photocontrol Included CC=Coastal construction finish ¹² FADC=Field Adjustable Dimming Controller		SLTD=DALI ³ PR=NEMA Photocontrol Receptacle ⁷ PR7=NEMA 7-Pin Twistlock Photocontrol Receptacle		TA1BK=Decorative Ladder Rest for Field Installation (Black) OA/RA1013=Photocontrol Shorting Cap OA/RA1014=NEMA Photocontrol - 120V OA/RA1016=NEMA Photocontrol - Multi-Tap OA/RA1027=NEMA Photocontrol - 480V OA/RA1201=NEMA Photocontrol - 347V OA1223=10kV Surge Module Replacement HS-UTLD-24=Field Installed UTLD House Side Shield for PA1 ¹¹ VGS-ARCH=Short Vertical Drop Shield VGL-ARCH=Long Vertical Drop Shield			
NOTES: 1. Customer is responsible for engineering analysis to confirm pole and fixture compatibility for all applications. Refer to our white paper WP512031EN for additional support information. 2. PA1-20 only available in 120V. 3. Only available in universal voltage. Consult your lighting representative at Cooper Lighting Solutions if custom programming is required. Not available with PA1-50, PA1-100. Consult your lighting representative at Cooper Lighting Solutions if greater than PA1-80 (83W) is needed. 4. Only for use with 480V Wye systems. Per NEC, not for use with ungrounded systems, impedance grounded systems or corner grounded systems (commonly known as Three Phase Three Wire Delta, Three Phase High Leg Delta and Three Phase Corner Grounded Delta systems). 5. Not available with SLTD driver. 6. Use dedicated IES files for when performing layouts. These files are published on the UTLD Traditionaire product page on the website. 7. If "PR" selected, dimming functionality not available, dimming leads will be capped. 8. Not available with HSS or SLTD driver. 9. Lens panel and birdcove cannot be ordered together. 10. HSS not available with SWQ distribution. 11. Use tall cupola to accommodate network control solutions requiring the 7-pin receptacle. 12. Coastal construction finish salt spray tested to over 5,000-hours per ASTM B117, with a scribe rating of 9 per ASTM D1654.							

Product Specifications

Construction

- Hinged (stainless steel hinge pins) die-cast aluminum housing and cover with cupola.
- 3G vibration tested to ensure strength of construction and longevity in application.

Optics

- Choice of five patented, high-efficiency AccuLED Optic™ technology manufactured from injection-molded acrylic.
- Optics are precisely designed to shape the light output, maximizing efficiency and application spacing.
- AccuLED Optic technology creates consistent distributions with the scalability to meet customized application requirements.
- Optional 2700K, 3000K, 4000K and 5000K CCT. For the ultimate level of spill light control, an optional house-side shield accessory can be field, or factory installed.
- Optics are IP66 enclosure rated.
- Offered open sided as a standard with four lens options.

Electrical

- LED drivers mount to die-cast aluminum back housing for optimal heat sinking, operation efficacy, and prolonged life.
- Standard drivers feature electronic universal voltage (120-277V 50/60Hz), 347V 60Hz or 480V 60Hz operation, greater than 0.9 power factor, less than 20% harmonic distortion, and is suitable for operation in -40°C to 40°C ambient environments.
- Surge protection options: 10kV/10kA common - and differential - mode surge protection. Optional 20kV (light indicator optional), 10kV MOV, and 20kV MOV surge protection devices.

Mounting

- Self-aligning pole-top fitter for 3" O.D. pole tops or vertical tenons.
- Square headed 1-1/4" polymer coated mounting bolts with a lock nut.

Finish

- Cast components finished in a super TGIC polyester powder coat paint, 2.5 mil nominal thickness for superior protection against fade and wear.
- Optional colors include bronze, grey and white. RAL and custom color matches available.

Shipping Data

- Approximate Net Weight: 37 lbs. (17 kgs.)
- Effective Projected Area: 2.3 (Sq. Ft.)

Warranty

- Standard five-year warranty.
- Optional ten-year warranty, please see your Cooper Lighting Solutions Streetworks sales representative for more information.

TECHNICAL DATA

POWER CONSUMPTION – Saves 50-70%.

EXPECTED LED LIFE – 100,000 hrs.

LED TECHNOLOGY – Latest technology on Hi-Flux LEDs.

Minimal CRI of 70.

OPTICS – Special secondary optical lens design to maximize light output & uniformity. Each lens allows the fixture to generate different lighting patterns. Dimmable option.

DISTRIBUTION LAYOUT – Available: Type II, III, IV, V.

OPERATING TEMPERATURE – -40 C° ~ +70 C°.

HOUSING – Die cast aluminum housing with powder coat finish. Single, self-contained device, not requiring on-site assembly for installation, designed to prevent the buildup of water and accumulated debris. Tool-less entry housing. Watertight, IP66.

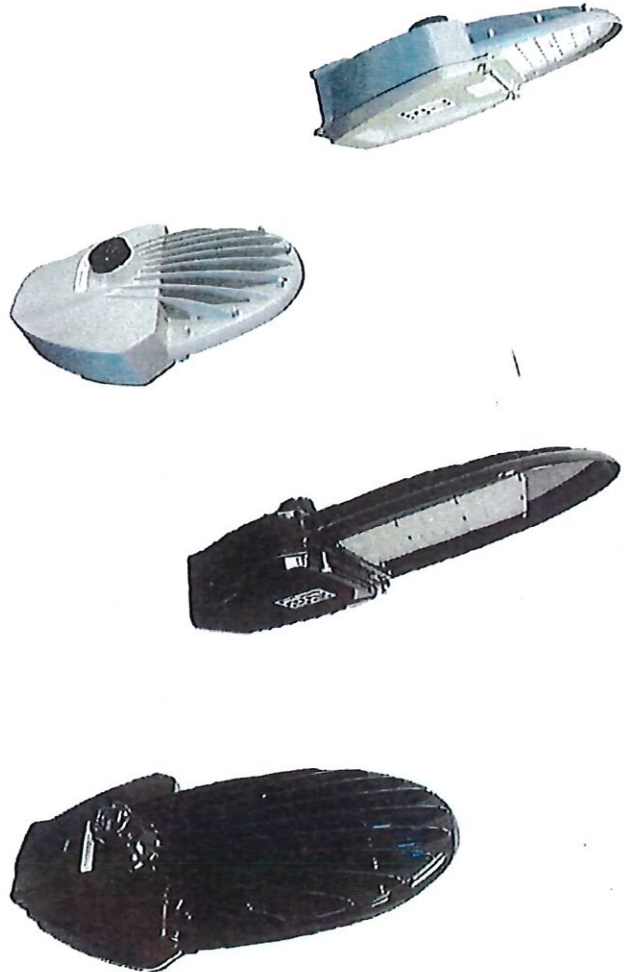
THERMAL MANAGEMENT – Heat sink fins are incorporated into the external design to allow for dispensing heat.

MOUNTING – ±5° mounting angle adjustability. Easy mounting hardware for mounting angles and different pole sizes.

ELECTRICAL FEATURES – Integral power surge protector tested in conformance to ANSI/IEEE C62.45 procedures. Comes with a variable voltage power supply either 120-277VAC or 247-528VAC. Twist-lock photocell included (3 or 7 pins). UL 1598, UL 8750 certified.

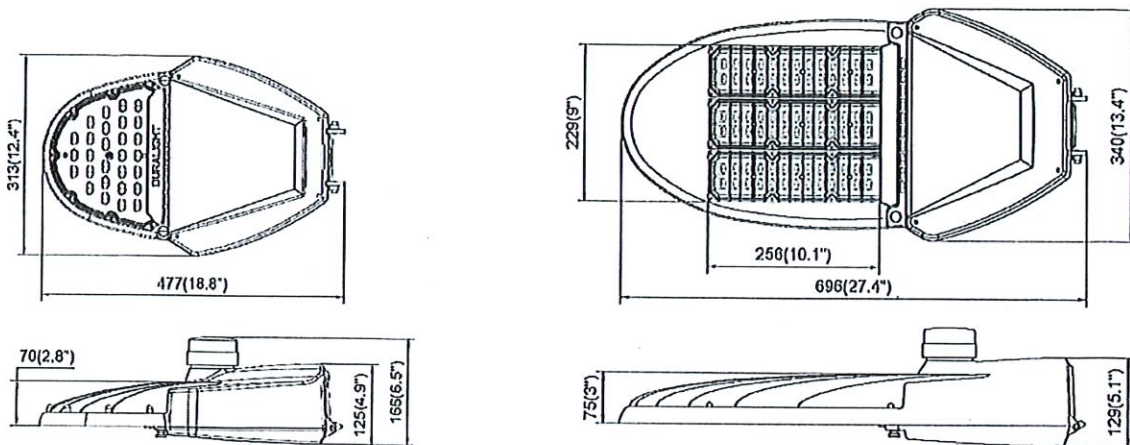
LUMINAIRE EFFICACY – ≥ 115 lm/w.

COLOR CORRELATED TEMPERATURE (CCT) – 3,000K to 6,000K.



Model Number:	DURA-ST10	DURA-ST15	DURA-ST20	DURA-ST25	DURA-ST30	DURA-ST40	DURA-ST40S
Wattage Level:	40W	65W	100W	120W	150W	185W	220W
Lumen Output:	≈ 4800	≈ 8300	≈ 12100	≈ 17000	≈ 20200	≈ 21300	≈ 25000
CRI:	> 70	> 70	> 70	> 70	> 70	> 70	> 70
Power Factor:	> 0.9	> 0.9	> 0.9	> 0.9	> 0.9	> 0.9	> 0.9
Weight (lbs):	≤ 12	≤ 12	≤ 16	≤ 16	≤ 16	≤ 16	≤ 16
EPA (sqft):	0.46	0.46	0.65	0.65	0.65	0.65	0.65

HOUSING SIZES:



ORDERING/OPTIONS

Example: DURA-ST20-4K-120-2-GR-SC

PREFIX		SERIES		WATTAGE LEVEL		CCT	
DURA	DURALIGHT LED	ST	Lighting Series	10	≈ 40W	3K	3000K (± 300)
				15	≈ 65W	4K	4000K (± 300)
				20	≈ 100W		(Standard CCT)
				25	≈ 120W		
				30	≈ 150W	5K	5000K (± 300)
				40	≈ 185W	6K	6000K (± 300)
				40S	≈ 220W		

VOLTAGE		DISTRIBUTION		FINISH		OPTIONS	
120	120V – 277V (Standard Driver)	2	Type II	GR	Gray Housing (Standard)	PC	Photocell
480	247V – 528V	3	Type III	BK	Black	SC	Shorting Cap
		4	Type IV	BZ	Bronze	DM	Dimming (0-10V Driver)
		5	Type V	DG	Dark Green	L	Utility Label
				SP	Special Color (Provide Chip)	B	Bubble Level

- NOTE:
1. Fixtures come with a Standard 7-Pin Receptacle.
 2. Color other than the standard Gray may incur an extra charge. Please contact us for additional information.

STATE OF OKLAHOMA
DEPARTMENT OF TRANSPORTATION

PLAN OF PROPOSED
WELCOME CENTER

F.A. PROJECT NO. STPIY-0035-1(117)003EH

INTERSTATE HIGHWAY NO. 35

STATE JOB NO. 16728(04)

LOVE COUNTY

NORTH BOUND INTERSTATE 35

(EAST SIDE) THACKERVILLE REST AREA

OKLAHOMA DEPARTMENT OF TRANSPORTATION					
FED. ROAD DIST. NO.	STATE	FED. AID NO.	FISCAL YEAR	SHEET NO.	TOTAL SHEETS
6	OKLA.	5110-0035-1(117)003EH		1	
DESCRIPTION				REVISION	DATE
Added sht. 23B					6-17-99

INDEX OF SHEETS

1. TITLE SHEET
2. TYPICAL SECTION SHEET
3. SUMMARY OF PAY QUANTITIES (ROADWAY)
4. SUMMARY OF PAY QUANTITIES (TRAFFIC)
5. SURVEY DATA SHEET
6. PLAN SHEET LAYOUT
7. UTILITY LAYOUT SHEET
8. REMOVAL SHEET
9. ACCESS ROAD /PARKING LOT LAYOUT
10. DETAIL SHEET
11. FLAG PLAZA DETAILS
- 11A. FLAG PLAZA SPECIFICATIONS
12. SIDEWALK LAYOUT
13. SITE FURNISHING DETAILS
14. HANDICAPPED PARKING AND SIGNING DETAILS
- 15-17. LIGHTING PLAN
18. LIGHTING SCHEDULE
19. SIGNING, STRIPING, AND SIGN SUMMARY
20. LANDSCAPE PLAN
21. LANDSCAPING SPECIFICATIONS
22. VENDING MACHINE PAVILION DETAIL
23. MISCELLANEOUS DETAILS
- 23A- 23B. SITE PLAN
24. FOOTING AND FLOOR PLAN - MAINTENANCE BUILDING
25. ELEVATION SHEET - MAINTENANCE BUILDING
26. MECHANICAL PLAN - MAINTENANCE BUILDING
27. ELECTRICAL PLAN - MAINTENANCE BUILDING
- W-1. WATER LINE PLANS /REST AREAS
- W-2. WATER STAND PIPE DETAILS /REST AREAS
- W-3. MISCELLANEOUS DETAILS
- W-4-W-5. WATER STAND PIPE SPECIFICATIONS /REST AREAS

THE FOLLOWING STANDARDS SHALL BE REQUIRED:

GMS-1-22	SBS-1A-1	HLP-2-2	HMLD-1-6
FGS-2-19	SBS-2A-1	HLP-3-1	TCSI-1-01
SPA-1-17	SBS-3A-1	PPD-1-3	TCSI-2-00
SSA-1-1	CCD-1-4	HLD-1-2	TCSI-3-00
SSA-1A-1	PBD-1-8	HLD-2-2	TCSI-4-01
SSP-1-1	GMF-1-6	SPD-1-10	TCSI-5-00
FCM-2-3	BMF-1-5	SCD-1-5	TCSI-6-00
PM-1-16	BBD-1-3	TWD-1-3	TCSI-12-01
PM-3-10	HLP-1-5	HMF-1-6	TCSI-13-01
WSD-5-10	SCES-1-2	HMP-1-4	TCSI-14-01
SPI-2-4	PCPR-1-2	CSCD-3-6	LECS-2-5
RDS-3-3	LTU-2-3		
SIS-2-8	PR-1-3		



SURVEY CONTROL DATA

HORIZONTAL CONTROL:

HORIZONTAL CONTROL FOR THIS SURVEY IS THE NGS OKLAHOMA STATE PLANE COORDINATE SYSTEM OF 1929 LAMBERT PROJECTION (SOUTH ZONE).

BEARINGS:

THE BEARINGS SHOWN HERE IN OR HERE ON ARE GRID BEARINGS DERIVED FROM THE NGS OKLAHOMA STATE PLANE COORDINATE SYSTEM AND ARE NOT ASTRONOMICAL.

VERTICAL CONTROL:

LEVEL DATUM IS MEAN SEA LEVEL(NGS), NAD 27.

OKLAHOMA DEPARTMENT OF TRANSPORTATION
SPECIAL PROJECTS BRANCH
BRANCH MEMBERS: RICHARD ANDREWS
ERNESTINE MBROH
BRANCH MANAGER: TIM GATZ
CHECKED BY: TIM GATZ

PLAN SCALE 1:500
LAYOUT MAP SCALE 1:50000

CONVENTIONAL SIGNS

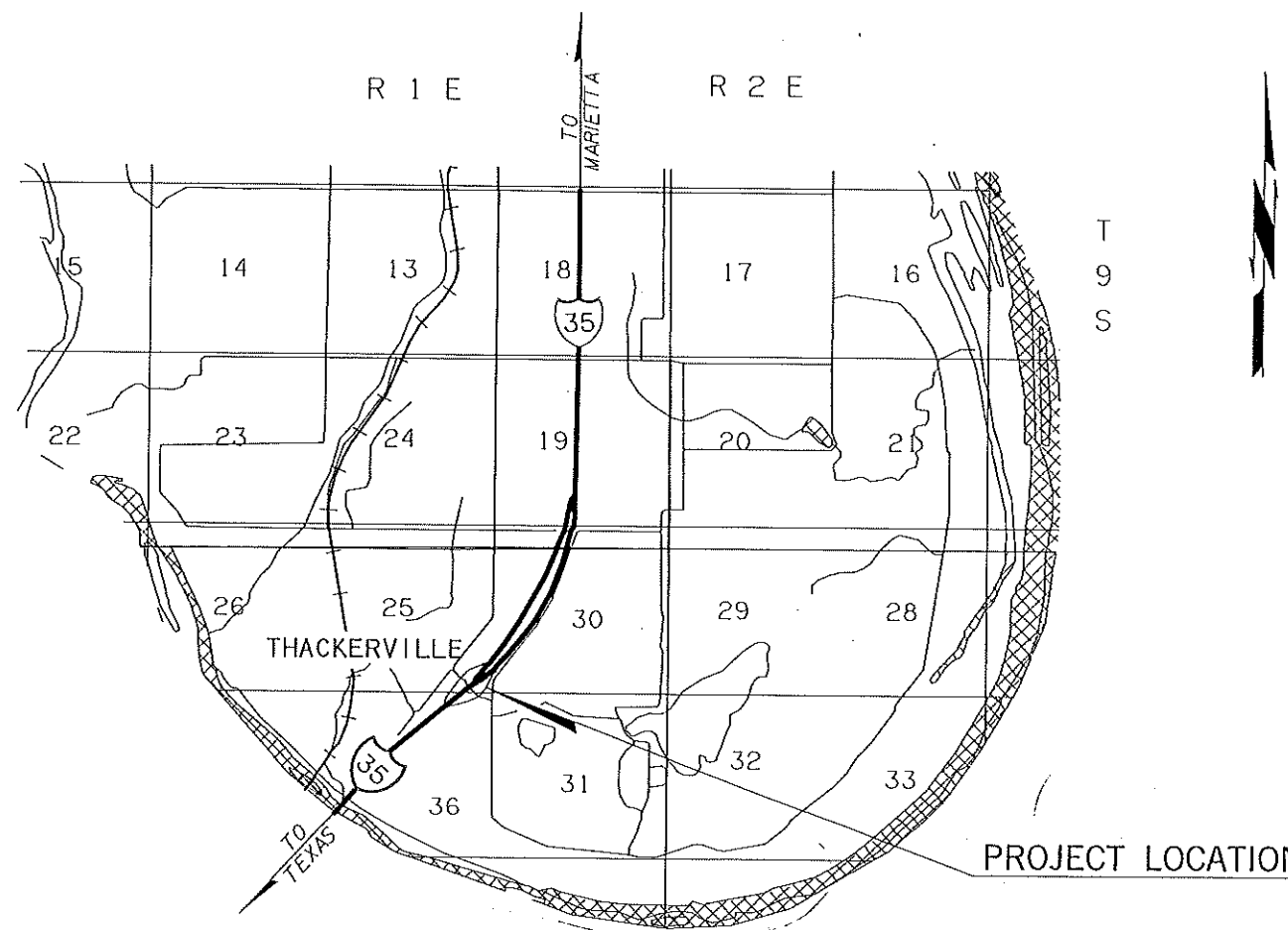
- INTERSTATE HIGHWAY
- U.S. HIGHWAY
- STATE HIGHWAY

CONVENTIONAL SYMBOLS

- PROPOSED ROAD
- RAILROADS
- RANGE & TOWNSHIP SECTION LINES
- QUARTER SECTION LINES
- FENCES
- GROUND LINE
- EXISTING ROAD
- BASE LINE
- CHIDE LINES
- TELEPHONE & TELEGRAPH
- POWER LINES
- DITCHES
- DRAINAGE STRUCTURES - IN PLACE
- DRAINAGE STRUCTURES - NEW
- RIGHT-OF-WAY LINES - EXISTING
- RIGHT-OF-WAY LINES - NEW
- RIGHT-OF-WAY MARKERS - IN PLACE
- RIGHT-OF-WAY MARKERS - REMOVE & REPLACE
- RIGHT-OF-WAY MARKERS - NEW
- CONTROLLED ACCESS
- RIGHT-OF-WAY FENCE

1988 OKLAHOMA STANDARD SPECIFICATIONS FOR HIGHWAY CONSTRUCTION GOVERN, APPROVED BY THE U.S. DEPARTMENT OF TRANSPORTATION, FEDERAL HIGHWAY ADMINISTRATION, JANUARY 3, 1989. SUPPLEMENTAL SPECIFICATIONS TO THE 1988 STANDARD SPECIFICATIONS TO GOVERN OVER THE STANDARD SPECIFICATIONS.

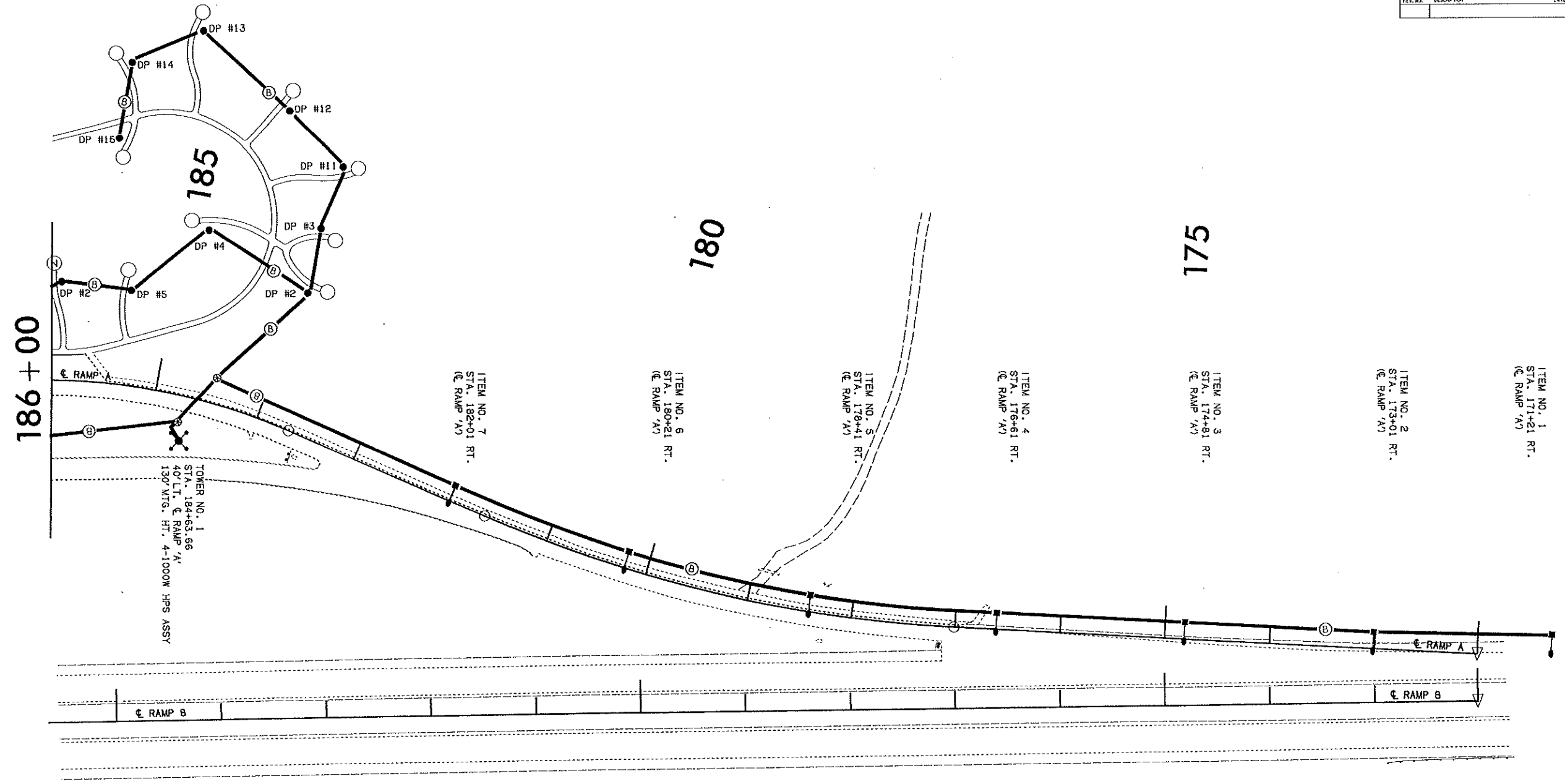
EQUATIONS = NONE
EXCEPTIONS = NONE



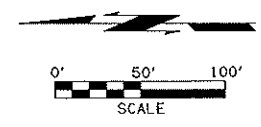
OKLAHOMA DEPARTMENT OF TRANSPORTATION	DEPARTMENT OF TRANSPORTATION FEDERAL HIGHWAY ADMINISTRATION
DATE APPROVED _____	DATE APPROVED _____
BY _____	BY _____
CHIEF ENGINEER	DIVISION ADMINISTRATOR
SWO F.A. PROJECT NO. STPIY-0035-1(117)003EH	SHEET NO. 1

LOVE COUNTY

REV. NO.	DESCRIPTION	REVISED	DATE



LIGHTING LEGEND	
--- (dashed line)	CONST. 3/4" GALV. STL. ELECT. CONDUIT EXPOSED WITH TWO NO. 10 AWG CONDUCTORS (UNLESS OTHERWISE SPECIFIED)
— (solid line)	CONST. 1-1/4" GALV. STL. ELECT. CONDUIT EXPOSED WITH TWO NO. 4 AWG CONDUCTORS (UNLESS OTHERWISE SPECIFIED)
— (solid line)	CONST. 2" PVC ELECT. CONDUIT TRENCHED WITH TWO NO. 4 AWG CONDUCTORS (UNLESS OTHERWISE SPECIFIED)
— (solid line)	CONST. 2" ELECT. CONDUIT PUSHED OR BORED WITH TWO NO. 4 AWG CONDUCTORS (UNLESS OTHERWISE SPECIFIED)
--- (dashed line)	EXISTING CONDUIT
XXXXXX (cross-hatched)	EXISTING OVERHEAD SIGN STRUCTURE
⊗ (circle with dot)	CONST. SIZE-1 PULL BOX
⊙ (circle with dot)	EXISTING PULL BOX
▲ (triangle)	CONSTRUCT SERVICE POLE
△ (triangle)	EXISTING SERVICE POLE
X (cross)	END OF ELECT. CIRCUIT (CONDUCTORS TAPED)
○ (circle)	CIRCUIT IDENTIFICATION
— (solid line)	CONST. 100W HPS UNDERPASS LUMINAIRE
— (solid line)	EXISTING UNDERPASS LUMINAIRE
○ (circle)	EXISTING LUMINAIRE AND POLE
○ (circle)	CONST. 400W HPS LUMINAIRE, 50' MTG. HT. POLE BREAKAWAY BASE AND FOOTING
○ (circle)	CONST. 250W HPS LUMINAIRE, 40' MTG. HT. POLE AND FOOTING
○ (circle)	CONST. 200W HPS LUMINAIRE, 40' MTG. HT. POLE BREAKAWAY BASE AND FOOTING
● (solid circle)	CONST. 150W HPS LUMINAIRE, 15' MTG. HT. POLE AND FOOTING
⊗ (circle with dot)	CONST. HIGH MAST TOWER
⊙ (circle with dot)	EXISTING HIGH MAST TOWER

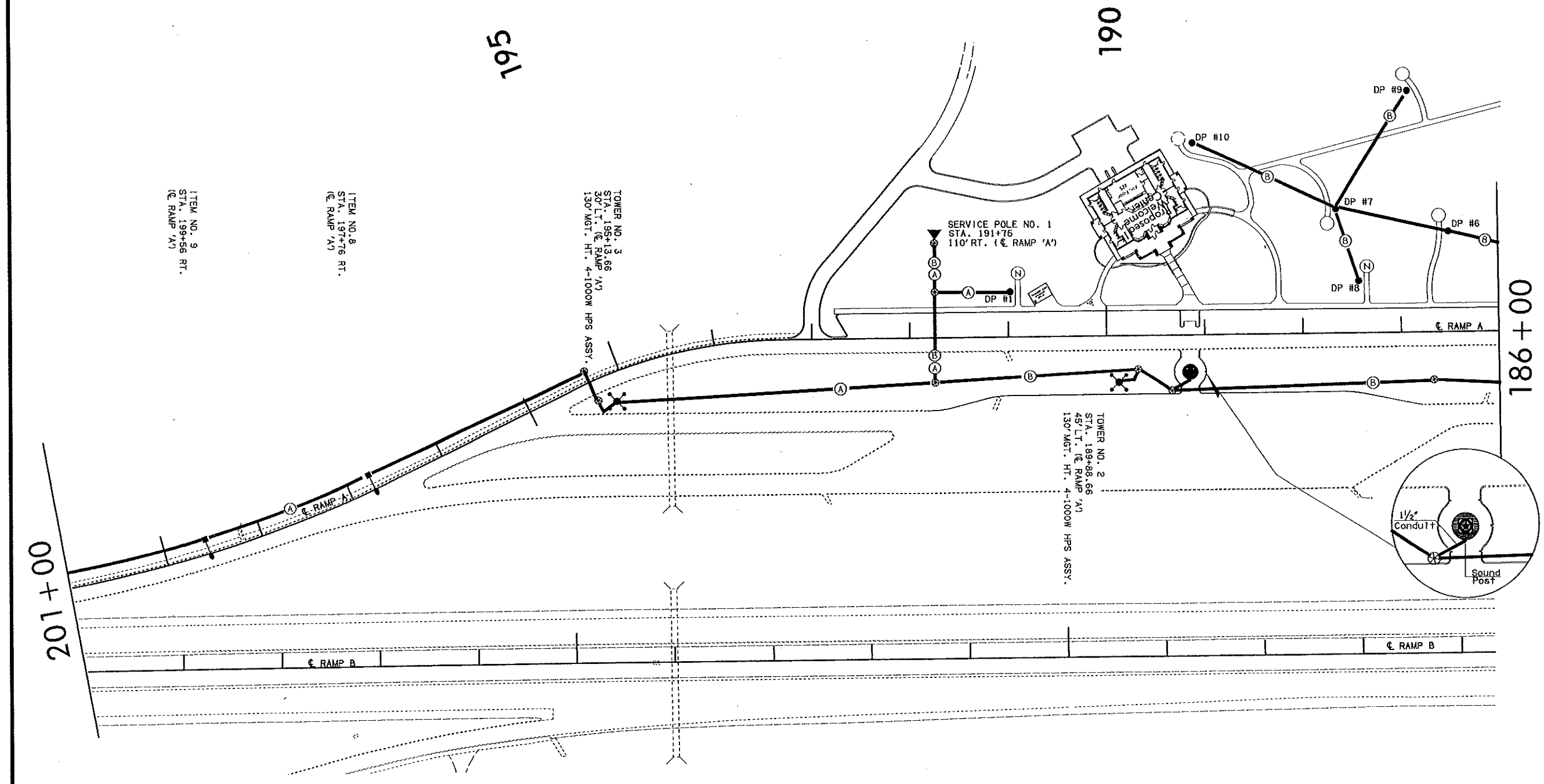


LIGHTING PLAN
STA 171+21 TO STA 186+00

Drawn	EM	3/99
Design	EM	3/99
Checked	JVM	3/99

STATE OF OKLAHOMA DEPARTMENT OF TRANSPORTATION
DIVISION 7 (STATE JOB NO. 1672804) SHEET NO. 15

REV. NO.	DESCRIPTION	REVISIONS	DATE



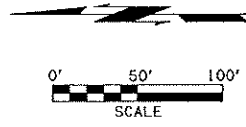
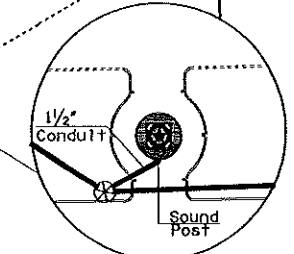
ITEM NO. 9
STA. 199+56 RT.
@ RAMP 'A'

ITEM NO. 8
STA. 197+76 RT.
@ RAMP 'A'

TOWER NO. 3
STA. 195+13.66
30' LT. @ RAMP 'A'
130' MGT. HT. 4-1000W HPS ASSY.

SERVICE POLE NO. 1
STA. 191+75
110' RT. @ RAMP 'A'

TOWER NO. 2
STA. 189+88.66
45' LT. @ RAMP 'A'
130' MGT. HT. 4-1000W HPS ASSY.



LIGHTING PLAN STA 189+88.66 TO STA 199+56.16		Drawn	EM	3/99
		Design	EM	3/99
STATE OF OKLAHOMA DIVISION 7		Checked	JMM	3/99
		ROADWAY DESIGN DIVISION SPECIAL PROJECTS BRANCH		
DEPARTMENT OF TRANSPORTATION STATE JOB NO. 16728(04)		SHEET NO. 16		

REV. NO.	DESCRIPTION	REVISIONS	DATE

ITEM NO. 10
STA. 201+36 RT.
(☉ RAMP 'B')

ITEM NO. 11
STA. 203+16 RT.
(☉ RAMP 'A')

ITEM NO. 12
STA. 204+96 RT.
(☉ RAMP 'B')

ITEM NO. 13
STA. 206+76 RT.
(☉ RAMP 'B')

ITEM NO. 14
STA. 208+56 RT.
(☉ RAMP 'B')

ITEM NO. 15
STA. 210+66 RT.
(☉ RAMP 'B')

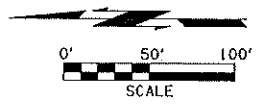
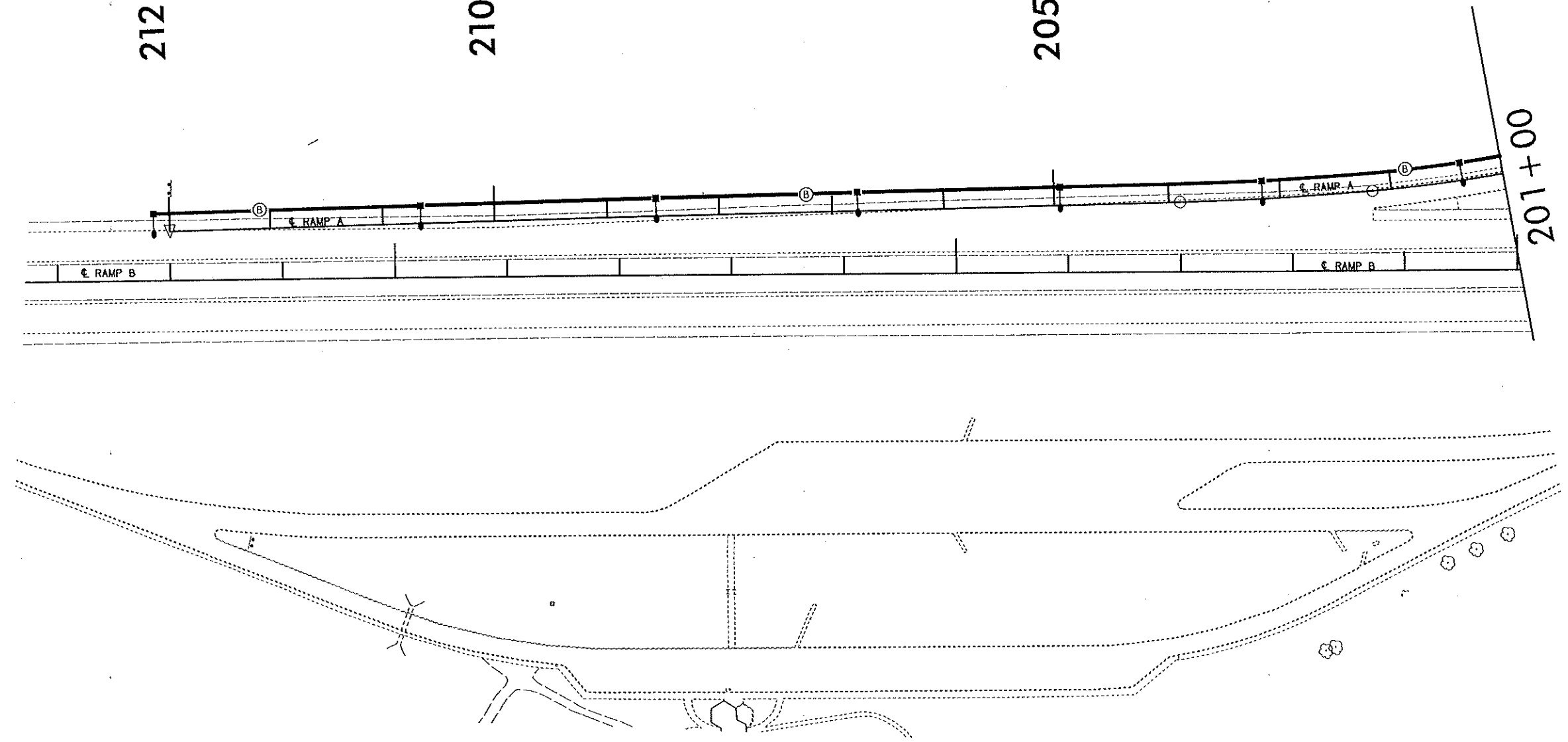
ITEM NO. 16
STA. 212+16 RT.
(☉ RAMP 'A')

212

210

205

201+00



STATE OF OKLAHOMA		DEPARTMENT OF TRANSPORTATION	
		DIVISION 7	STATE JOB NO. 16728(04)
LIGHTING PLAN STA 201+00 TO STA 212+16.16		Drawn	EM 3/99
		Design	EM 3/99
ROADWAY DESIGN DIVISION SPECIAL PROJECTS BRANCH		Checked	JMM 3/99
		SHEET NO. 17	

55-000-055

LOVE COUNTY

STATE OF OKLAHOMA
DEPARTMENT OF TRANSPORTATION

PLAN OF PROPOSED
WELCOME CENTER

F.A. PROJECT NO. STPIY-0035-1(117)003EH

INTERSTATE HIGHWAY NO. 35

STATE JOB NO. 16728(04)

LOVE COUNTY

NORTH BOUND INTERSTATE 35

(EAST SIDE) THACKERVILLE REST AREA

OKLAHOMA DEPARTMENT OF TRANSPORTATION				
FED. PROJ. DIST. NO.	STATE	FUND. NO.	FISCAL YEAR	TOTAL SHEETS
6	OKLA.	STPIY-0035-1		1
DESCRIPTION: Added sht. 23B				DATE: 6-17-99

INDEX OF SHEETS

1. TITLE SHEET
2. TYPICAL SECTION SHEET
3. SUMMARY OF PAY QUANTITIES (ROADWAY)
4. SUMMARY OF PAY QUANTITIES (TRAFFIC)
5. SURVEY DATA SHEET
6. PLAN SHEET LAYOUT
7. UTILITY LAYOUT SHEET
8. REMOVAL SHEET
9. ACCESS ROAD /PARKING LOT LAYOUT
10. DETAIL SHEET
11. FLAG PLAZA DETAILS
- 11A. FLAG PLAZA SPECIFICATIONS
12. SIDEWALK LAYOUT
13. SITE FURNISHING DETAILS
14. HANDICAPPED PARKING AND SIGNING DETAILS
- 15.-17. LIGHTING PLAN
18. LIGHTING SCHEDULE
19. SIGNING, STRIPING, AND SIGN SUMMARY
20. LANDSCAPE PLAN
21. LANDSCAPING SPECIFICATIONS
22. VENDING MACHINE PAVILION DETAIL
23. MISCELLANEOUS DETAILS
- 23A.- 23B. SITE PLAN
24. FOOTING AND FLOOR PLAN - MAINTENANCE BUILDING
25. ELEVATION SHEET - MAINTENANCE BUILDING
26. MECHANICAL PLAN - MAINTENANCE BUILDING
27. ELECTRICAL PLAN - MAINTENANCE BUILDING
- W-1. WATER LINE PLANS /REST AREAS
- W-2. WATER STAND PIPE DETAILS /REST AREAS
- W-3. MISCELLANEOUS DETAILS
- W-4-W-5. WATER STAND PIPE SPECIFICATIONS /REST AREAS

THE FOLLOWING STANDARDS SHALL BE REQUIRED:

GMS-1-22	SBS-1A-1	HLP-2-2	HMLD-1-6
FGS-2-19	SBS-2A-1	HLP-3-1	TCSI-1-01
SPA-1-17	SBS-3A-1	PPD-1-3	TCSI-2-00
SSA-1-1	CCD-1-4	HLD-1-2	TCSI-3-00
SSA-1A-1	PBD-1-8	HLD-2-2	TCSI-4-01
SSP-1-1	GMF-1-6	SPD-1-10	TCSI-5-00
FCM-2-3	BMF-1-5	SCD-1-5	TCSI-6-00
PM-1-16	BBD-1-3	TWD-1-3	TCSI-12-01
PM-3-10	HLP-1-5	HMF-1-6	TCSI-13-01
WSD-5-10	SCES-1-2	HMP-1-4	TCSI-14-01
SPI-2-4	PCPR-1-2	CSCD-3-6	LECS-2-5
RDSD-3-3	LTU-2-3		
SIS-2-8	PR-1-3		

SURVEY CONTROL DATA

HORIZONTAL CONTROL:

HORIZONTAL CONTROL FOR THIS SURVEY IS THE NGS OKLAHOMA STATE PLANE COORDINATE SYSTEM OF 1929 LAMBERT PROJECTION (SOUTH ZONE).

BEARINGS:

THE BEARINGS SHOWN HERE IN OR HERE ON ARE GRID BEARINGS DERIVED FROM THE NGS OKLAHOMA STATE PLANE COORDINATE SYSTEM AND ARE NOT ASTRONOMICAL.

VERTICAL CONTROL:

LEVEL DATUM IS MEAN SEA LEVEL(NGS), NAD 27.

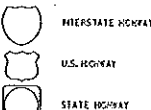
OKLAHOMA DEPARTMENT OF TRANSPORTATION
SPECIAL PROJECTS BRANCH

BRANCH MEMBERS: RICHARD ANDREWS
ERNESTINE MBRCH

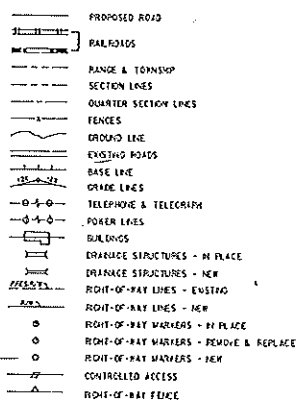
BRANCH MANAGER: TIM GATZ
CHECKED BY: TIM GATZ

PLAN SCALE 1:500
LAYOUT MAP SCALE 1:50000

CONVENTIONAL SIGNS

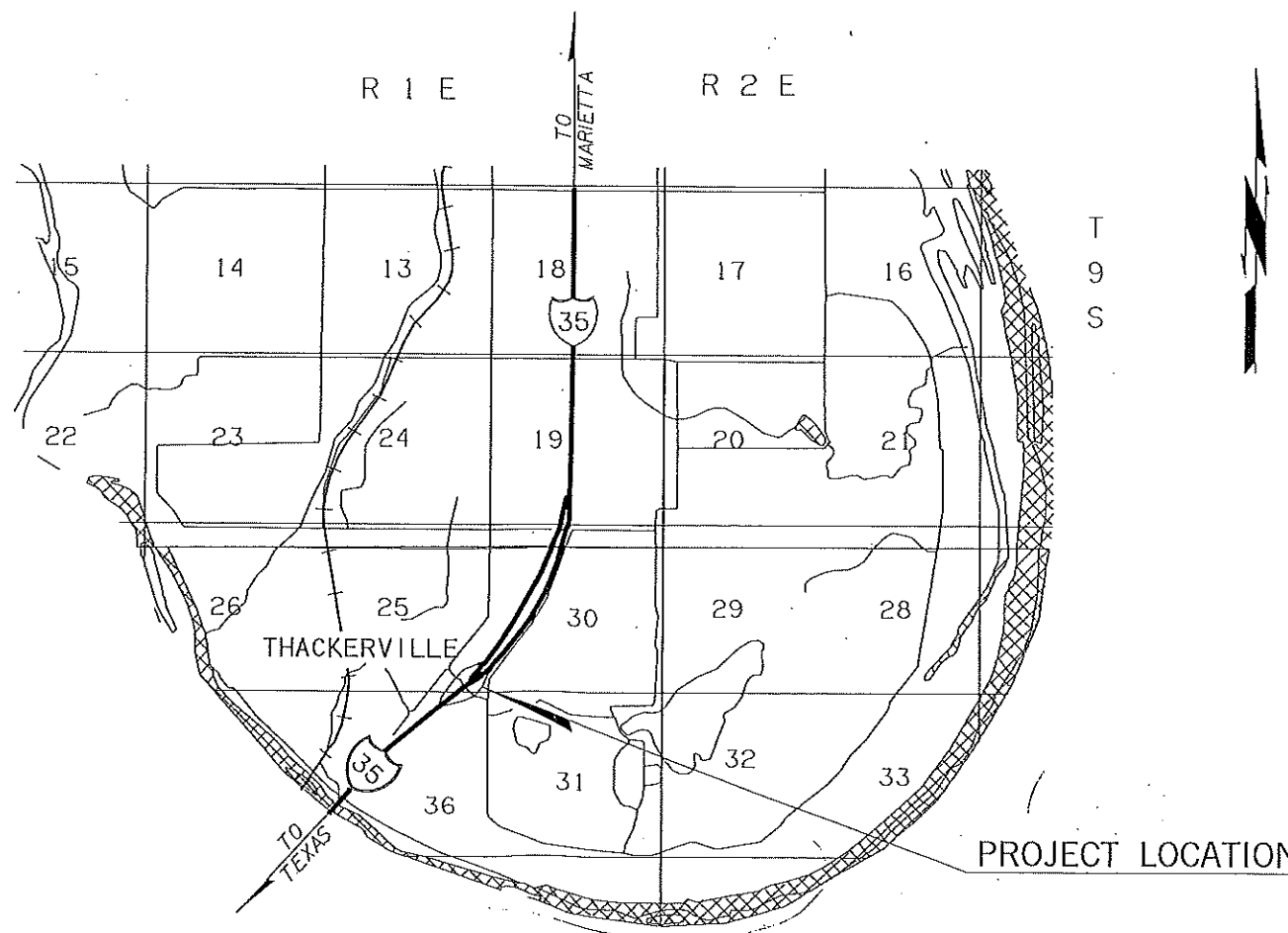


CONVENTIONAL SYMBOLS



1988 OKLAHOMA STANDARD SPECIFICATIONS FOR HIGHWAY CONSTRUCTION GOVERN, APPROVED BY THE U.S. DEPARTMENT OF TRANSPORTATION, FEDERAL HIGHWAY ADMINISTRATION, JANUARY 3, 1989. SUPPLEMENTAL SPECIFICATIONS TO THE 1988 STANDARD SPECIFICATIONS TO GOVERN OVER THE STANDARD SPECIFICATIONS.

EQUATIONS = NONE
EXCEPTIONS = NONE



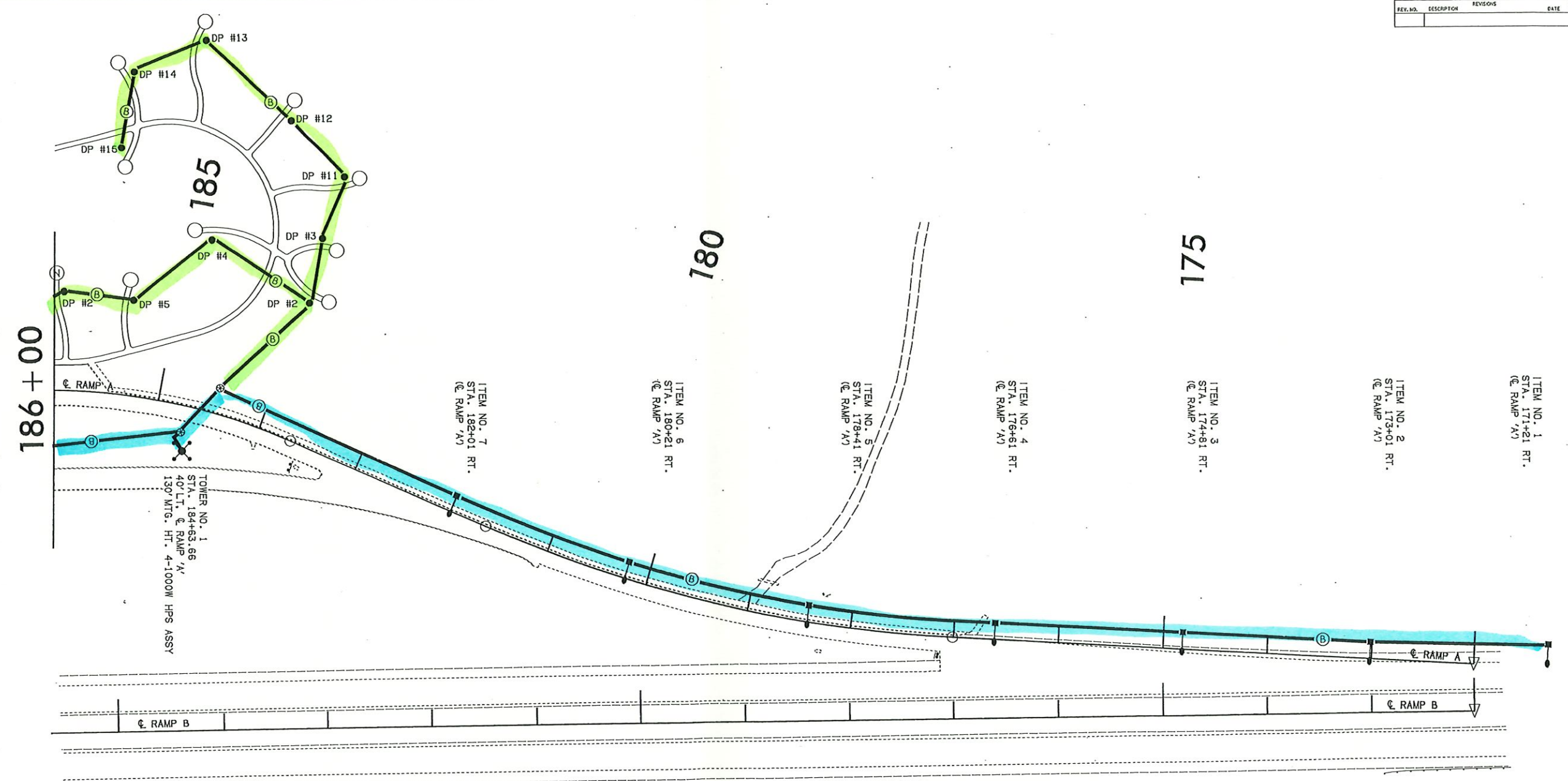
PROJECT LENGTH 0.00 FT. 0.00 MI.

OKLAHOMA DEPARTMENT OF TRANSPORTATION	DEPARTMENT OF TRANSPORTATION FEDERAL HIGHWAY ADMINISTRATION
DATE APPROVED _____	DATE APPROVED _____
BY _____	BY _____
CHEF ENGINEER	DIVISION ADMINISTRATOR
SWD F.A. PROJECT NO. STPIY-0035-1(117)003EH	SHEET NO. 1

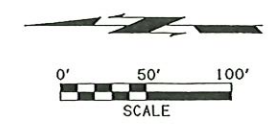
LOVE COUNTY



REV. NO.	DESCRIPTION	REVISIONS	DATE

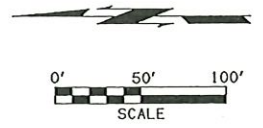
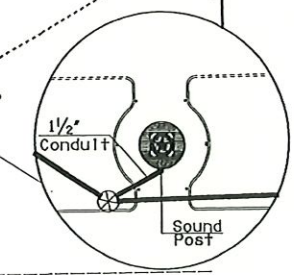
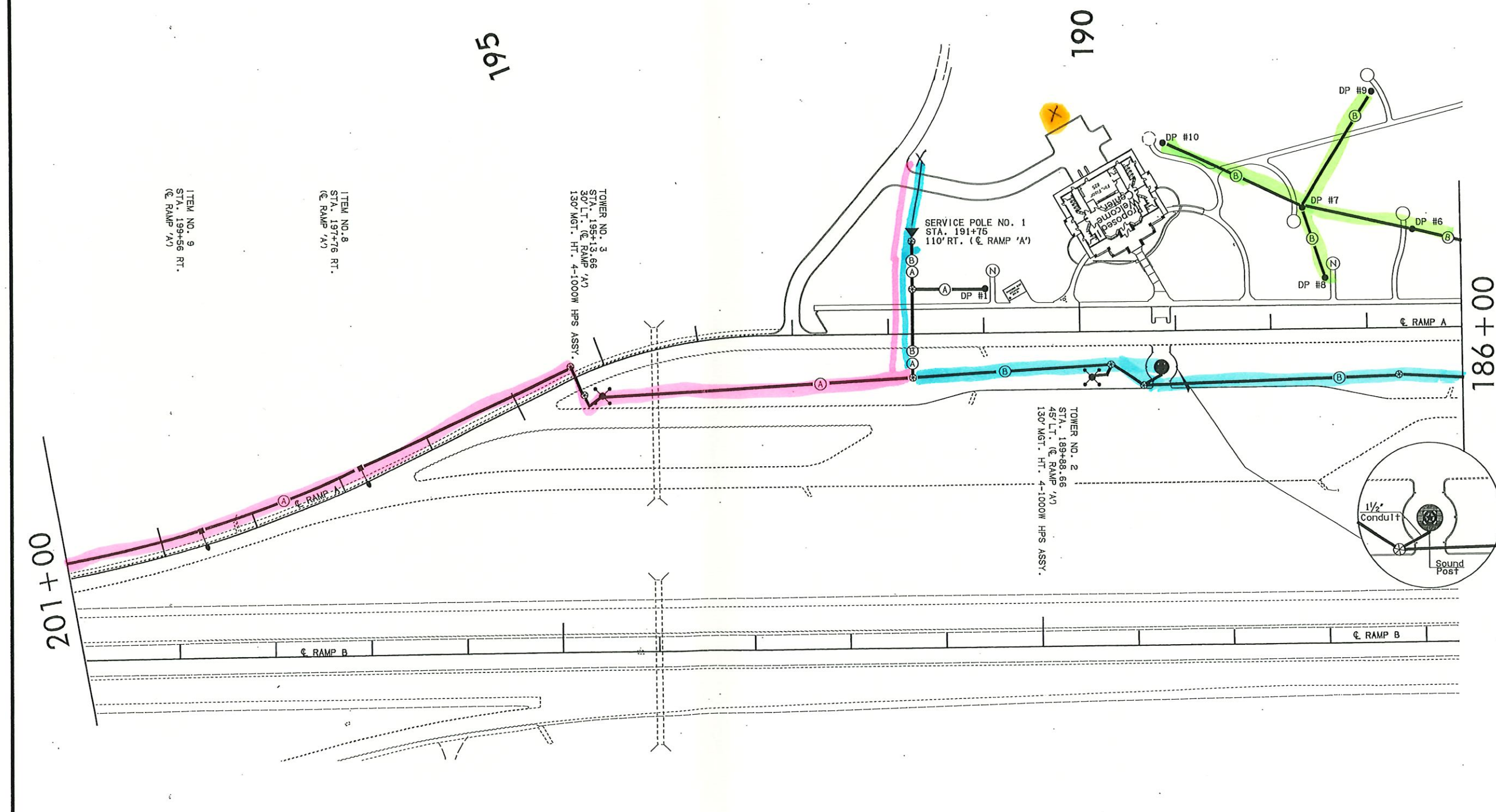


LIGHTING LEGEND	
-----	CONST. 3/4" GALV. STL. ELECT. CONDUIT EXPOSED WITH TWO NO. 10 AWG CONDUCTORS (UNLESS OTHERWISE SPECIFIED)
-----	CONST. 1-1/4" GALV. STL. ELECT. CONDUIT EXPOSED WITH TWO NO. 4 AWG CONDUCTORS (UNLESS OTHERWISE SPECIFIED)
-----	CONST. 2" PVC ELECT. CONDUIT TRENCHED WITH TWO NO. 4 AWG CONDUCTORS (UNLESS OTHERWISE SPECIFIED)
-----	CONST. 2" ELECT. CONDUIT PUSHED OR BORED WITH TWO NO. 4 AWG CONDUCTORS (UNLESS OTHERWISE SPECIFIED)
-----	EXISTING CONDUIT
XXXXXX	EXISTING OVERHEAD SIGN STRUCTURE
⊕	CONST. SIZE-1 PULL BOX
⊕	EXISTING PULL BOX
▲	CONSTRUCT SERVICE POLE
▲	EXISTING SERVICE POLE
X	END OF ELECT. CIRCUIT (CONDUCTORS TAPED)
○	CIRCUIT IDENTIFICATION
○	CONST. 100W HPS UNDERPASS LUMINAIRE
○	EXISTING UNDERPASS LUMINAIRE
○	EXISTING LUMINAIRE AND POLE
○	CONST. 400W HPS LUMINAIRE, 50' MTG. HT. POLE BREAKAWAY BASE AND FOOTING
○	CONST. 250W HPS LUMINAIRE, 40' MTG. HT. POLE AND FOOTING
○	CONST. 200W HPS LUMINAIRE, 40' MTG. HT. POLE BREAKAWAY BASE AND FOOTING
○	CONST. 150W HPS LUMINAIRE, 15' MTG. HT. POLE AND FOOTING
⊕	CONST. HIGH MAST TOWER
⊕	EXISTING HIGH MAST TOWER



LIGHTING PLAN		
STA 171+21 TO STA 186+00		
Drawn	EM	3/99
Design	EM	3/99
Checked	JMM	3/99
ROADWAY DESIGN DIVISION SPECIAL PROJECTS BRANCH		
STATE OF OKLAHOMA	DEPARTMENT OF TRANSPORTATION	SHEET NO. 15
DIVISION 7 - [STATE JOB NO. 1672804]		

REV. NO.	DESCRIPTION	REVISIONS	DATE



LIGHTING PLAN		
STA 189+88.66 TO STA 199+56.16		
Drawn	EM	3/99
Design	EM	3/99
Checked	JMM	3/99
ROADWAY DESIGN DIVISION SPECIAL PROJECTS BRANCH		
STATE OF OKLAHOMA	DEPARTMENT OF TRANSPORTATION	SHEET NO. 16
DIVISION 7 (STATE JOB NO. 1672804)		

LOVE COUNTY

55Edw055

REV. NO.	DESCRIPTION	REVISIONS	DATE

ITEM NO. 10
STA. 201+36 RT.
(@ RAMP 'B')

ITEM NO. 11
STA. 203+16 RT.
(@ RAMP 'A')

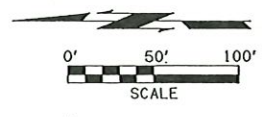
ITEM NO. 12
STA. 204+96 RT.
(@ RAMP 'B')

ITEM NO. 13
STA. 206+76 RT.
(@ RAMP 'B')

ITEM NO. 14
STA. 208+56 RT.
(@ RAMP 'B')

ITEM NO. 15
STA. 210+66 RT.
(@ RAMP 'B')

ITEM NO. 16
STA. 212+16 RT.
(@ RAMP 'A')



LIGHTING PLAN			
STA 201+00 TO STA 212+16.16			
Drawn	EM	3/99	
Design	EM	3/99	
Checked	JMM	3/99	
ROADWAY DESIGN DIVISION SPECIAL PROJECTS BRANCH			
STATE OF OKLAHOMA	DEPARTMENT OF TRANSPORTATION	SHEET NO. 17	
DIVISION 7		STATE JOB NO. 16728(04)	

LOVE COUNTY

S:\projects\16728\16728.dwg