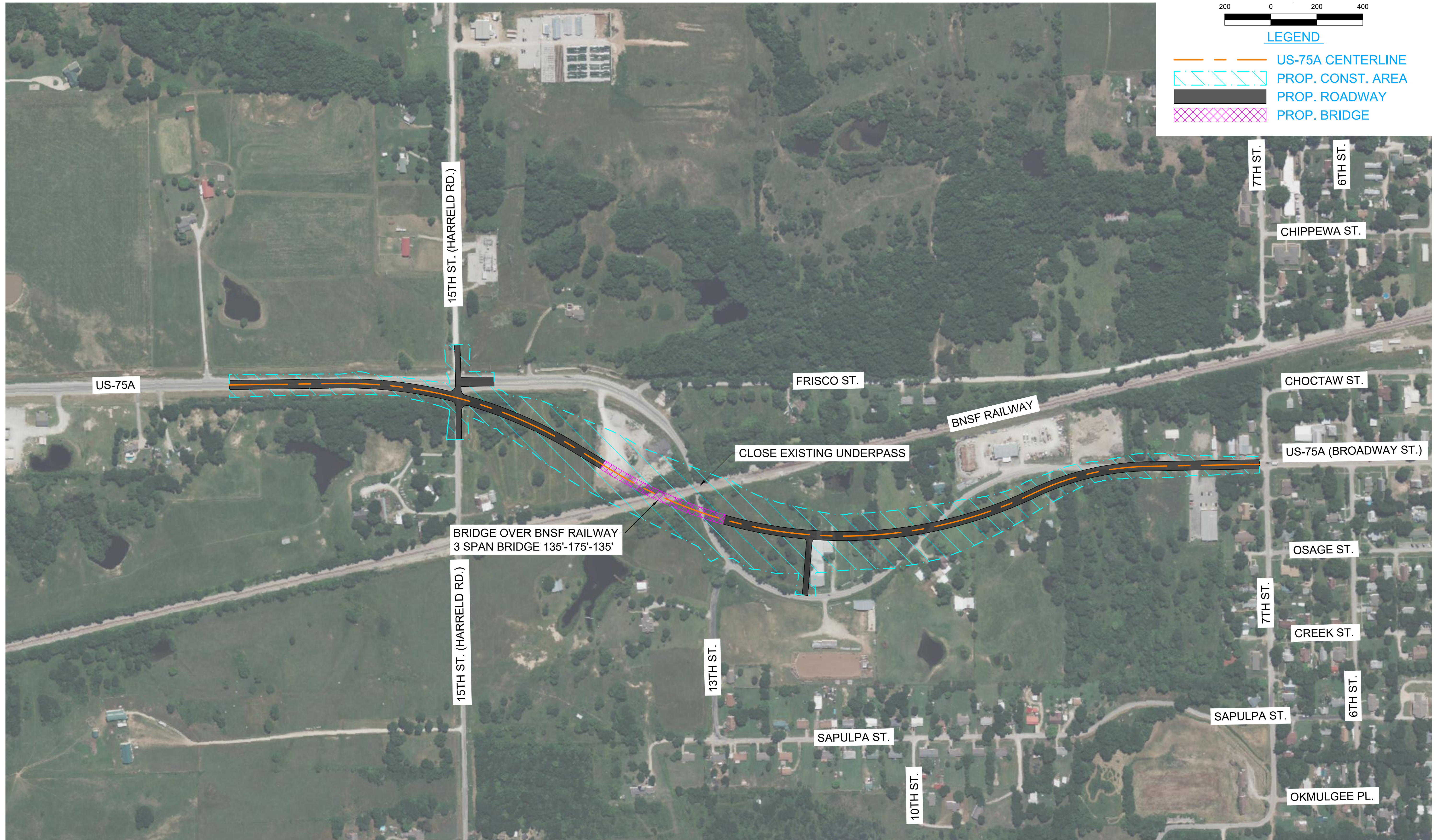
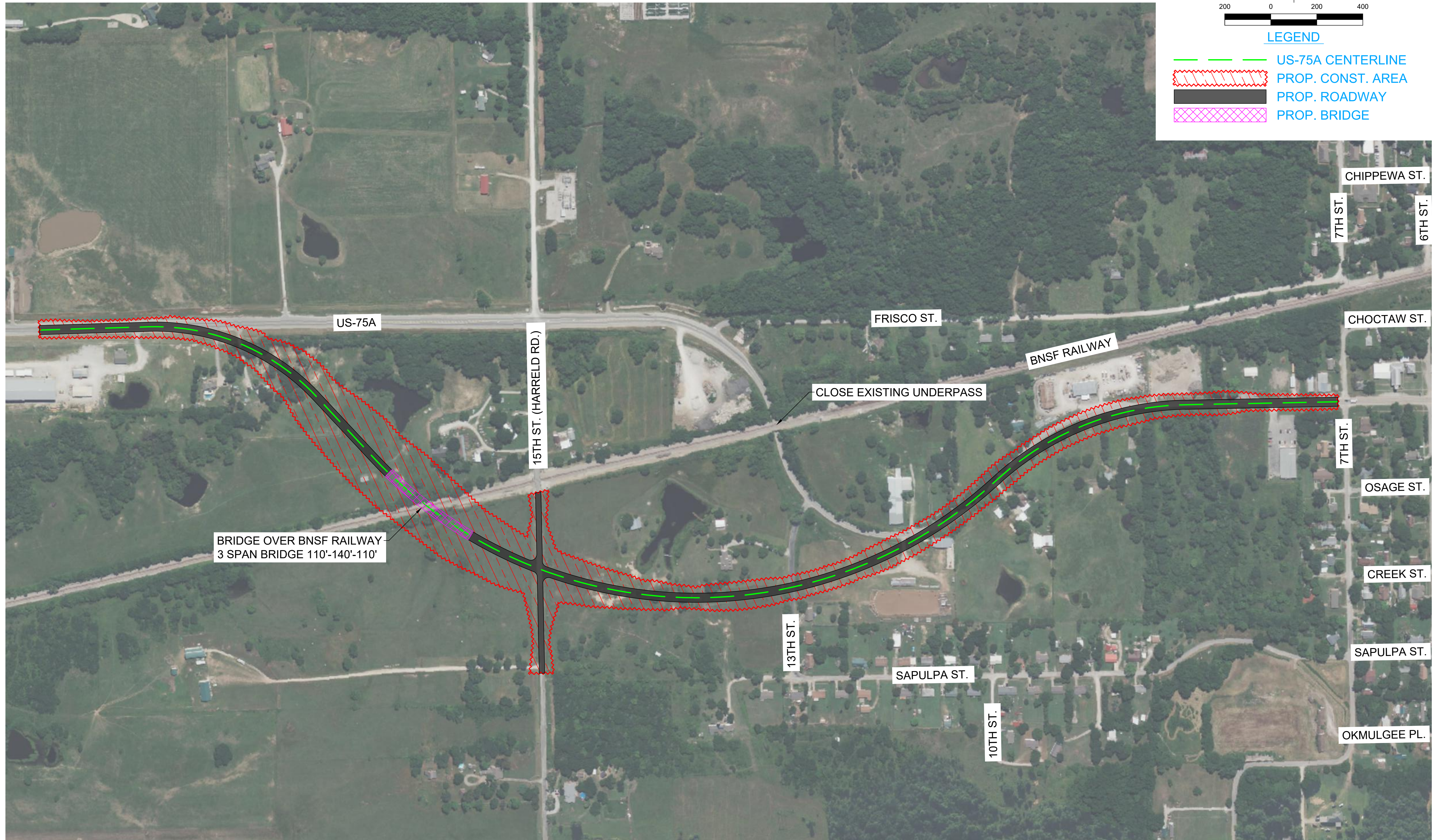


US-75A - OPTION 1



US-75A - OPTION 2

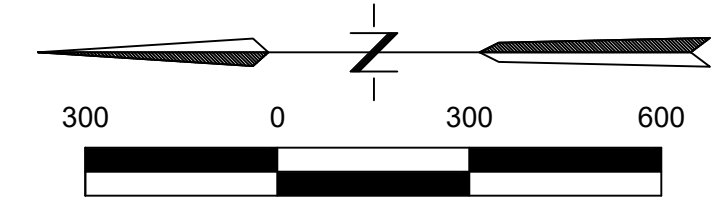


US-75A - OPTION 3



US-75A - OVERALL MAP

IMPACT CATEGORY	DESCRIPTION	OPTION 1	OPTION 2	OPTION 3
Commercial Properties	Number of commercial properties with Proposed ROW	5	7	3
Residential Properties	Number of residential properties with Proposed ROW	13	16	10
Proposed ROW	Area of Proposed ROW	29.4 AC	74.8 AC	32.6 AC
Proposed ROW Estimate	Conceptual ROW Cost Estimates	\$3.12M	\$2.69M	\$0.62M
Total Cost Estimate	Total Construction Cost Estimates	\$18.95 M	\$18.55M	\$8.37M



LEGEND

- US-75A OPTION 1
- US-75A OPTION 2
- US-75A OPTION 3
- PROP. ROADWAY
- OPTION 1 CONST. AREA
- OPTION 2 CONST. AREA
- OPTION 3 CONST. AREA
- PROP. BRIDGE

