

MATCHLINE (MAP 2)

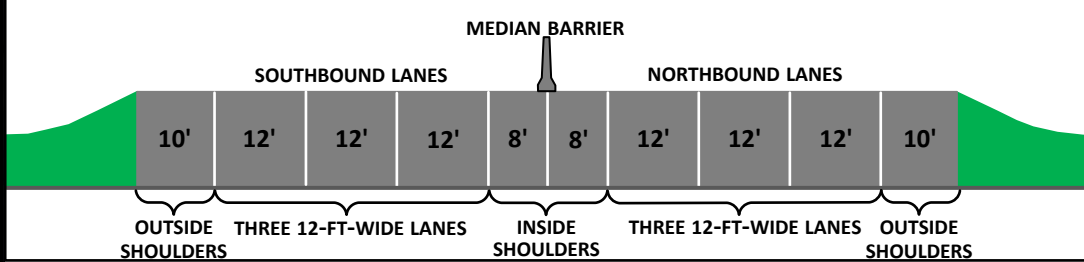
N 113th E Ave.



N Owasso Expy

E 66th St. N

TYPICAL SECTION



PROJECT PLAN – MAP 1

JP 34436 / J3-4436(004)

US-169: From East 66th St. N & extending north 2 miles to 86th St. N in Owasso Tulsa County, OK



Legend

- Proposed Pavement (Grey line)
- Existing Right-of-Way (Blue line)
- Median Barrier (Black line)
- Railroad (Black line with cross-ticks)



PROJECT START

MATCHLINE (MAP 3)

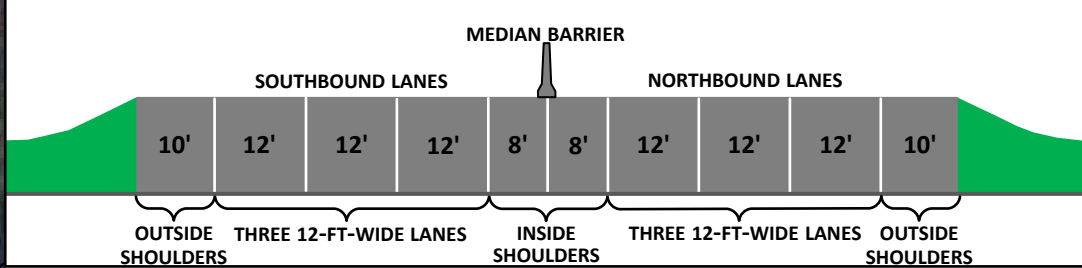
N 113th E Ave.



N Owasso Expy

E 69th St. N

TYPICAL SECTION



PROJECT PLAN – MAP 2

JP 34436 / J3-4436(004)

US-169: From East 66th St. N & extending north 2 miles to 86th St. N in Owasso Tulsa County, OK

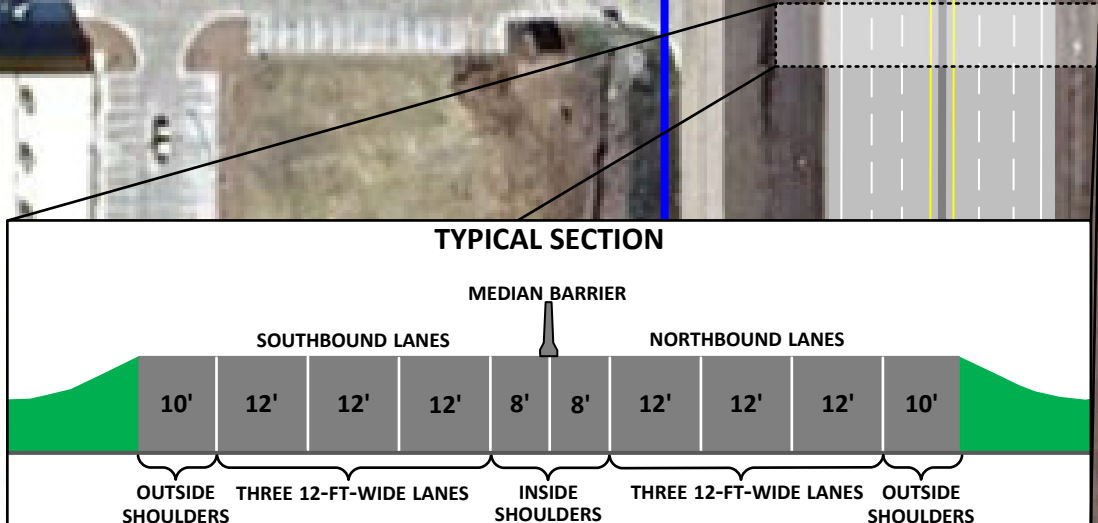
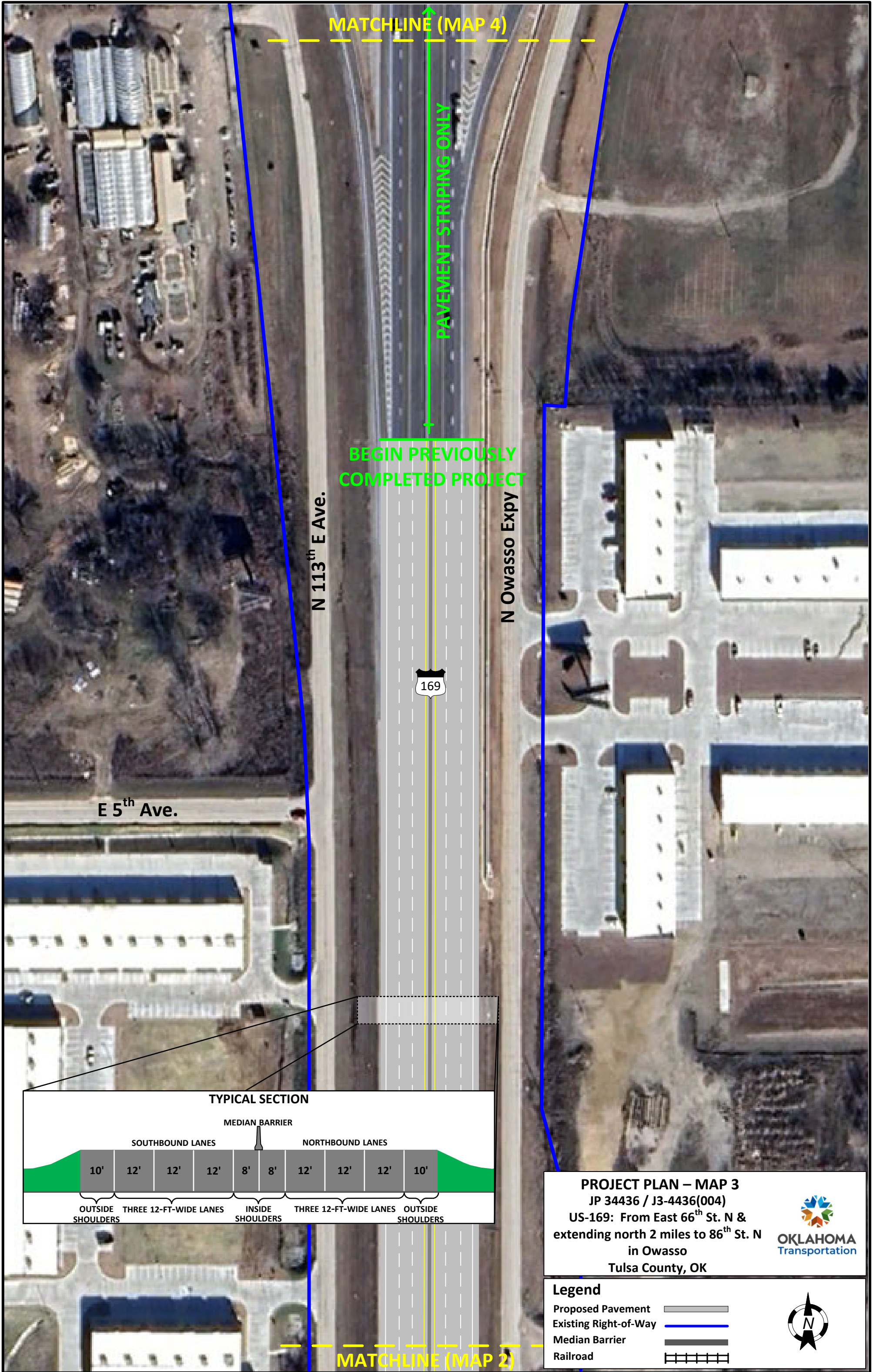


Legend

- Proposed Pavement
- Existing Right-of-Way
- Median Barrier
- Railroad



MATCHLINE (MAP 1)




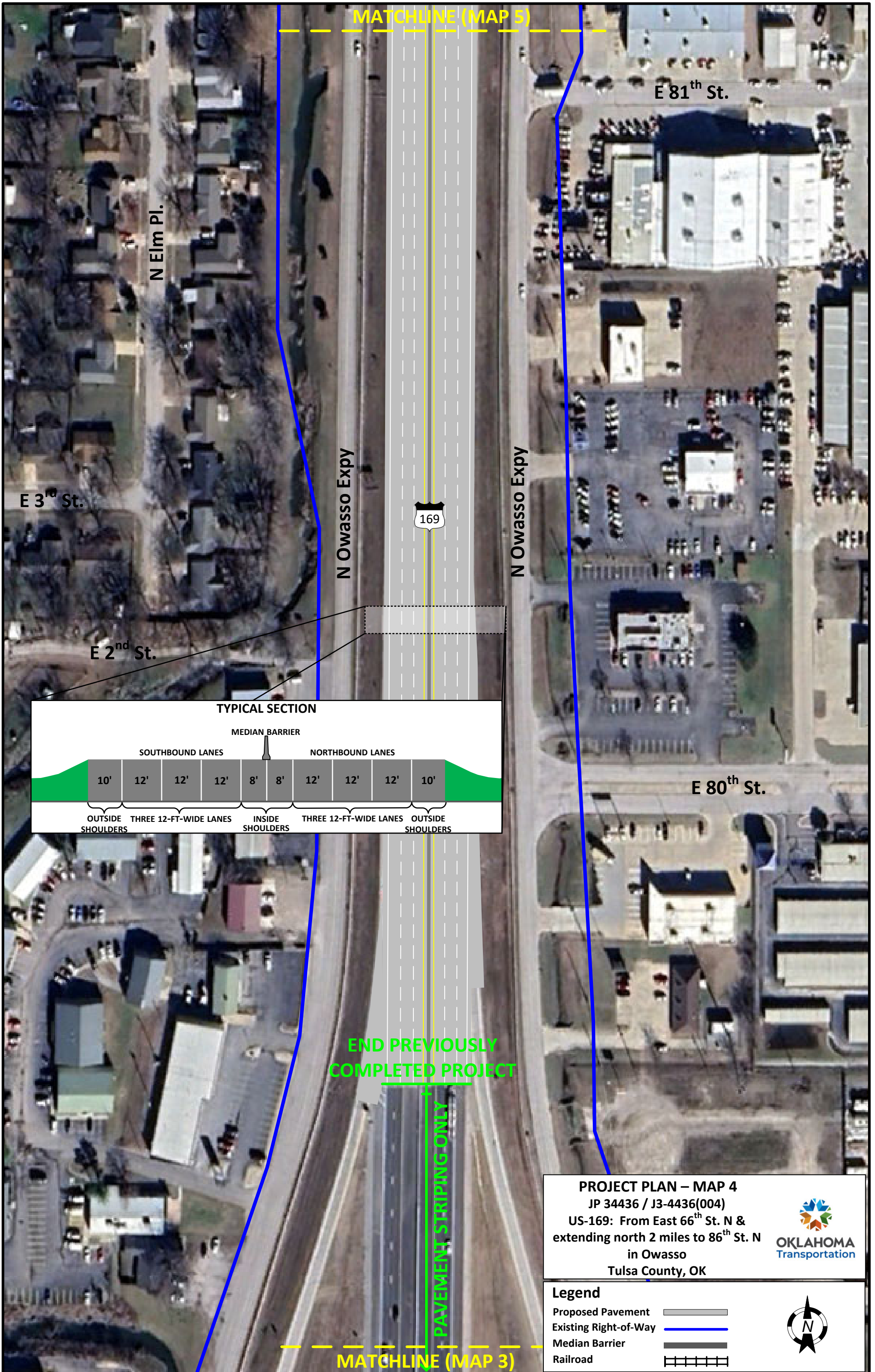
PROJECT PLAN – MAP 3
 JP 34436 / J3-4436(004)
 US-169: From East 66th St. N & extending north 2 miles to 86th St. N in Owasso
 Tulsa County, OK



Legend

- Proposed Pavement
- Existing Right-of-Way
- Median Barrier
- Railroad





MATCHLINE (MAP 5)

E 81th St.

N Elm Pl.

E 3rd St.

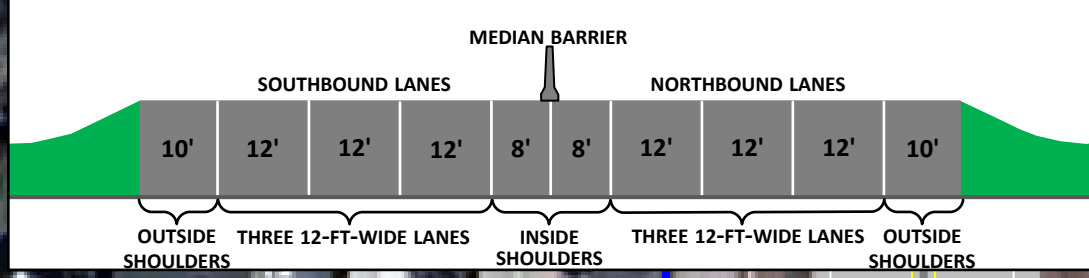
N Owasso Expy



N Owasso Expy

E 2nd St.

TYPICAL SECTION



E 80th St.

END PREVIOUSLY COMPLETED PROJECT

PAVEMENT STRIPING ONLY

MATCHLINE (MAP 3)

PROJECT PLAN – MAP 4
 JP 34436 / J3-4436(004)
 US-169: From East 66th St. N & extending north 2 miles to 86th St. N in Owasso
 Tulsa County, OK

Legend

- Proposed Pavement
- Existing Right-of-Way
- Median Barrier
- Railroad

MATCHLINE (MAP 6)

Owasso Family YMCA

E 83rd St.



N Owasso Expy

N Owasso Expy

Rayola Park

E 4th St.

TYPICAL SECTION

MEDIAN BARRIER

SOUTHBOUND LANES

NORTHBOUND LANES

10'

12'

12'

12'

8'

8'

12'

12'

12'

10'

OUTSIDE SHOULDERS

THREE 12-FT-WIDE LANES

INSIDE SHOULDERS

THREE 12-FT-WIDE LANES

OUTSIDE SHOULDERS

PROJECT PLAN – MAP 5
JP 34436 / J3-4436(004)
US-169: From East 66th St. N & extending north 2 miles to 86th St. N in Owasso
Tulsa County, OK

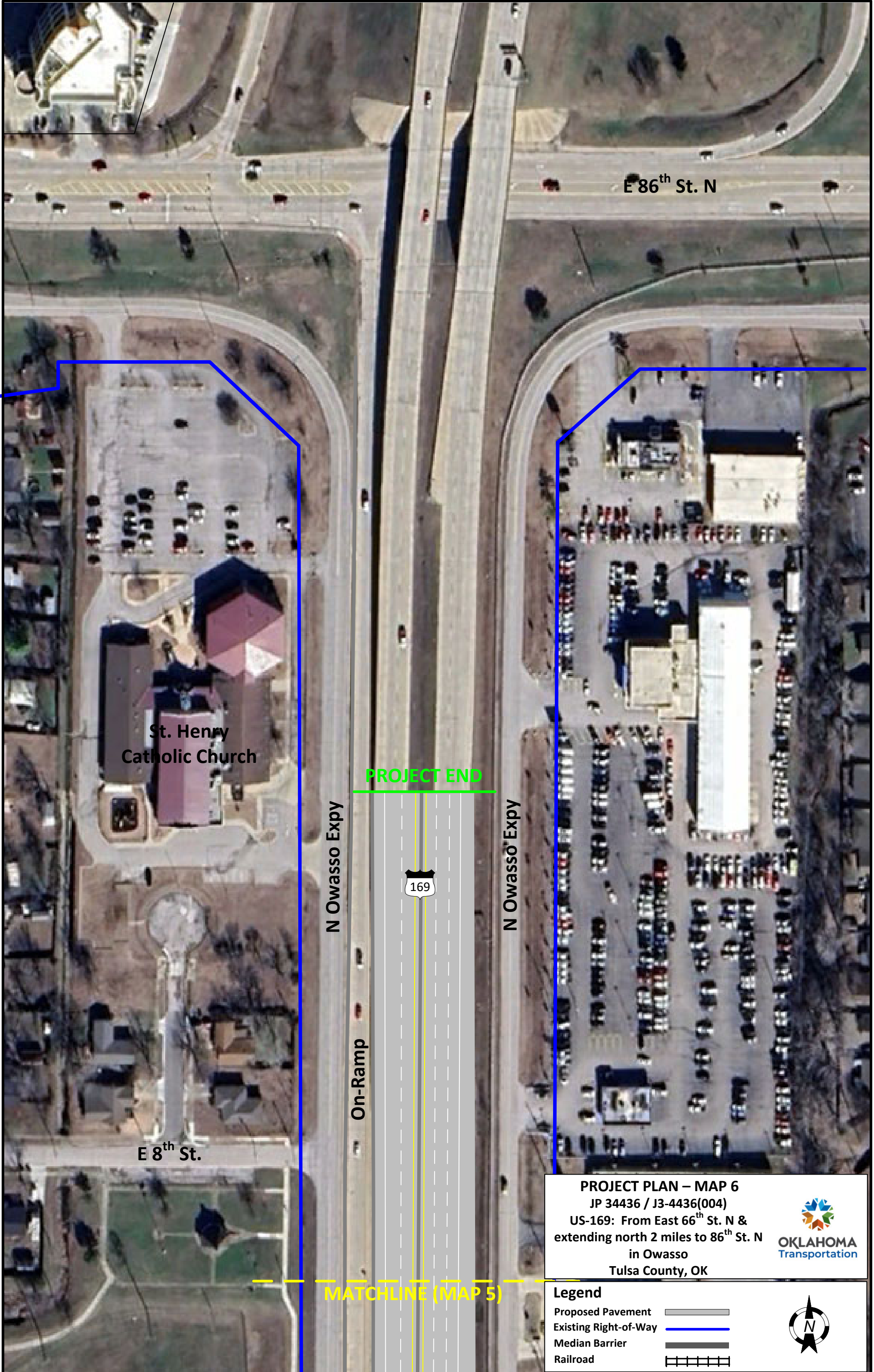


Legend

- Proposed Pavement
- Existing Right-of-Way
- Median Barrier
- Railroad



MATCHLINE (MAP 4)



E 86th St. N

St. Henry
Catholic Church

PROJECT END

N Owasso Expy



N Owasso Expy

On-Ramp




E 8th St.

MATCHLINE (MAP 5)

PROJECT PLAN – MAP 6
JP 34436 / J3-4436(004)
US-169: From East 66th St. N &
extending north 2 miles to 86th St. N
in Owasso
Tulsa County, OK



Legend

- Proposed Pavement 
- Existing Right-of-Way 
- Median Barrier 
- Railroad 