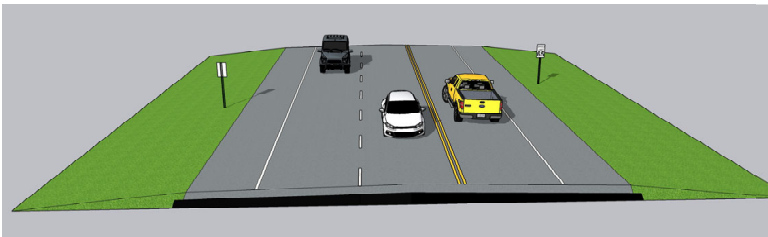


PROJECT LOCATION MAP

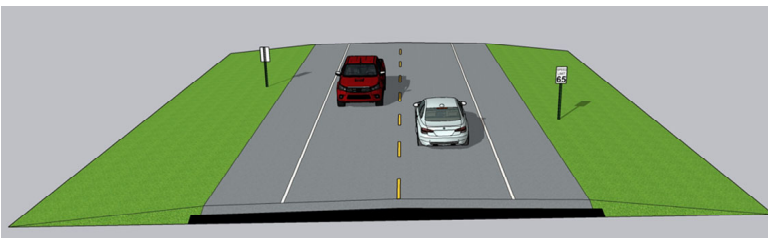


PROPOSED TYPICAL SECTION



3-Lane Typical Roadway Section

Typical includes: two 12-foot-wide driving lanes; 8-foot wide shoulders; 12-foot-wide passing lane



2-Lane Typical Roadway Section

Typical includes: two 12-foot-wide driving lanes; 8-foot wide shoulders

PROJECT INFORMATION SUMMARY

- Right-of-Way & Utility Relocation programmed to start in: **2024**
- Construction programmed to start in: **2028**
- Annual Average Daily Traffic (AADT) in year 2022: **4,150 Vehicles a day**
- Future Estimated AADT in year 2042: **5,050 Vehicles a day**
- Highway will remain open to traffic at all times during construction

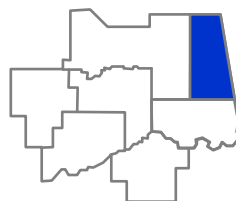
DISTRICT 1 ENGINEER: CHRIS WALLACE, P.E.

Total Road Miles*: 1,110.70 Total Interstate Miles*: 97.31 Total Bridges**: 704

Counties: **Adair, Cherokee, Haskell, McIntosh, Muskogee, Okmulgee, Sequoyah, Wagoner**

*Totals DO NOT include Toll Roads

**Totals DO NOT include County Bridges



PLEASE PROVIDE YOUR COMMENTS BY NOVEMBER 14, 2023

For more information about the project, contact:

(405) 325-3269
environment@odot.org

<http://www.odot.org/publicmeetings>



November 9, 2023
4:00 p.m. to 6:30 p.m.
Mid County Community Center | 75371 HWY-59 | Westville, OK 74965

SH-59 • Adair County, OK • 33461(04)

Presentation of Proposed Improvements & Solicitation of Public Input

Purpose of Open House

The purpose of the Open House meeting is to present the proposed project, solicit input, and answer questions regarding construction activities, sequencing, and scheduling.

Project Background

The Oklahoma Department of Transportation (ODOT), in cooperation with the Federal Highway Administration (FHWA), proposes to make safety improvements to US-59 beginning just north of the Shell Branch Creek bridge near Baron, OK and extending north approximately 5 miles to the US-62/US-59 Junction in Westville, OK. This is a continuation of the US-59 corridor improvement project (ODOT JP #30570(04)) starting in Maryetta and extending north approximately five miles to just south of the Shell Branch Creek bridge near Baron, OK.

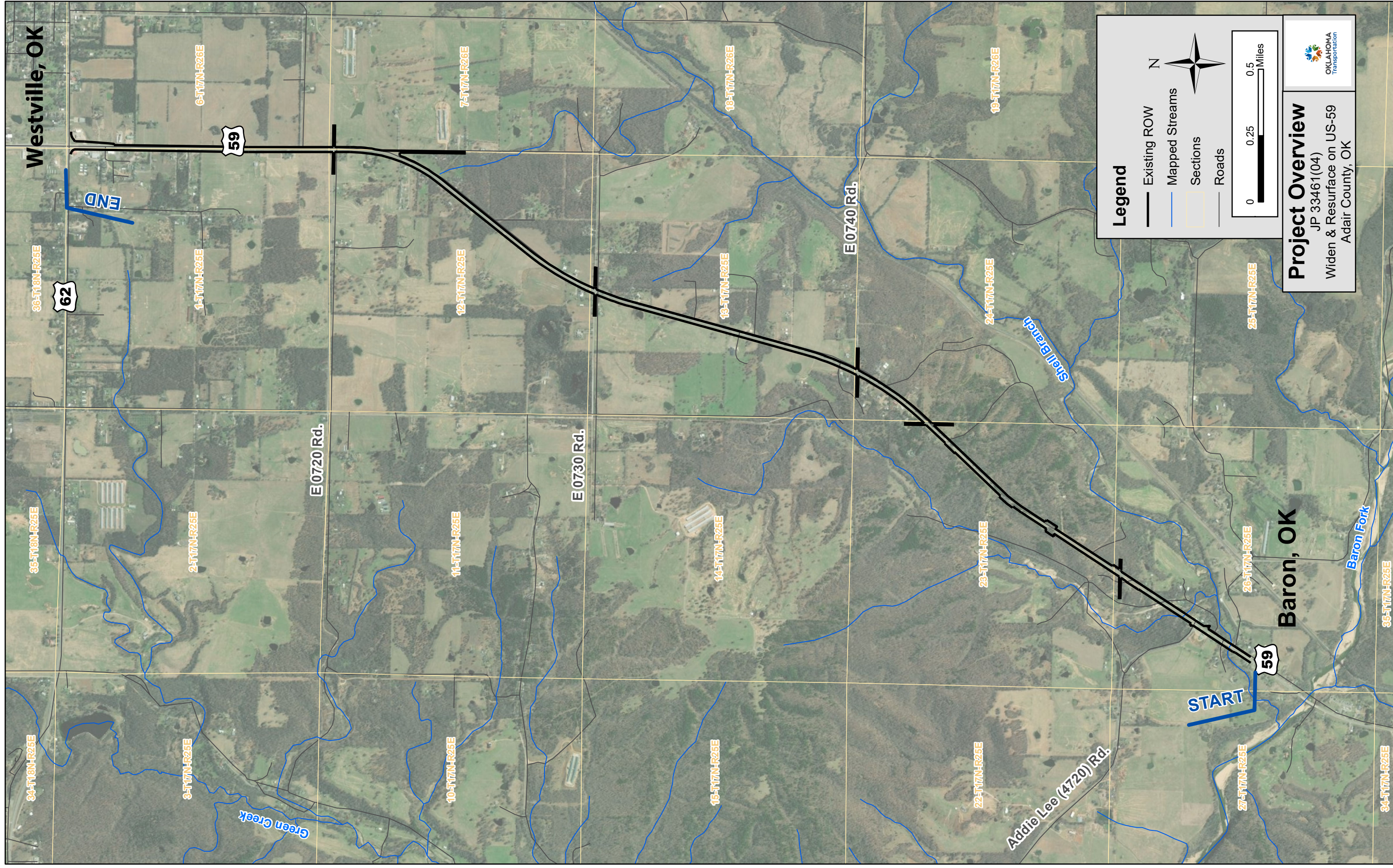
This segment of US-59 is a principal arterial US highway with two 12-foot-wide asphalt lanes and varying width shoulders. It has deteriorating pavement, narrow shoulders, poor traffic flow, and limited sight distances in places. Within the project extent, there is one bridge sized structure (NBI #01676) over an unnamed tributary to Shell Branch Creek. This structure is a reinforced concrete box bridge with 2 cells measuring 10 feet wide by 6 feet tall by 39 feet long. The box bridge is narrow with a 32-foot-wide roadway clearance. The 2022 traffic volume was 4,150 vehicles per day (vpd), which is projected to increase to 5,050 vpd by 2042.

Project Description

ODOT is developing design plans for improving this segment of US-59 while taking into consideration the cost of construction, right-of-way and utilities impacts, and potential environmental concerns. Overall, the proposed improvements consist of widening and reconstructing the roadway. From just north of the Shell Branch Creek bridge and extending north for approximately 4.7 miles, the highway will be widened to create two 12-foot-wide driving lanes with 8-foot-wide shoulders. To improve traffic flow along certain segments, an additional 12-foot-wide passing lane will be added in alternating north- and southbound directions. Just south of Schultz Drive in Westville, OK, the roadway will transition to a five-lane curb-and-gutter facility with four 12-foot-wide driving lanes and a 12-foot-wide center turning lane. Improvements will be made on the existing alignment and most of the widening will be symmetrical; however, some slight offsets will be necessary to improve safety, and to avoid utilities and environmentally sensitive areas.

Additionally, angled intersections, driveways and entrances will be realigned to be perpendicular, and steep hills and dips will be corrected to address limited sight distances. The box bridge over the tributary to Shell Branch Creek will be replaced and lengthened to create a 40-foot-wide roadway clearance.

The acquisition of new temporary and permanent right-of-way will be needed, and the relocation of utilities will occur. The highway will remain open during construction, and access to residences and businesses will be maintained throughout the project duration.

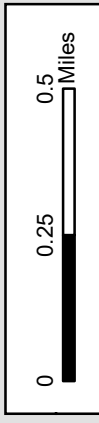
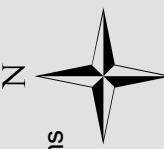


Westville, OK

Baron, OK

Legend

- Existing ROW
- Mapped Streams
- Sections
- Roads



Project Overview

JP 33461(04)
Widen & Resurface on US-59
Adair County, OK

