

Heat Map of I-35 Southbound Crashes (2017-2021)



Please provide comments by August 15, 2023

For more information about the project:
 (405) 325-3269
 environment@odot.org
 www.odot.org/publicmeetings



PUBLIC MEETING
 August 1, 2023

I-35 Southbound
 Memorial Road to NE 122nd Street
 Oklahoma County; JP 33771(04)
 www.odot.org/publicmeetings

Project Purpose

The purpose of this project is to improve safety and mobility on I-35 including at the I-35/Turner Turnpike interchange. In the current condition, southbound traffic on I-35 drops a lane at the low-speed, loop ramp exit to eastbound Turner Turnpike, leaving only two through lanes. This creates congestion on I-35, particularly in the morning peak hours.

Ramps entering southbound I-35 from the eastbound Kilpatrick Turnpike and westbound Turner Turnpike create a multi-lane merge on both sides. Traffic from westbound Turner Turnpike wanting to exit at NE 122nd Street must weave across multiple lanes in a relatively short distance.



Proposed Improvements

The proposed project will add a southbound through lane to I-35 beginning at Memorial Drive south to Hefner Road. Dedicated auxiliary lanes will be provided for traffic entering and exiting I-35.

To reduce the potential for collisions due to the complex weaving movements at NE 122nd Street, a concrete barrier will be constructed to prevent westbound Turner Turnpike traffic from exiting at NE 122nd Street. Traffic will be allowed to merge onto I-35 prior to the exit at Hefner Road. Turner Turnpike traffic wanting to access NE 122nd Street will exit to I-35 north and take Sooner Road south to NE 122nd Street.

PROJECT INFORMATION SUMMARY

- Construction Start: **2026**
- Annual Average Daily Traffic (AADT) in year 2022: **88,500 vehicles per day**
- Future Estimated AADT by Year 2050: **136,300 vehicles per day**

*Totals DO NOT include Toll Roads

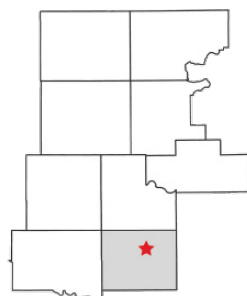
DISTRICT 4 ENGINEER: TRENTON JANUARY, P.E.

**Totals DO NOT include County Bridges

*Total Road Miles:
1,406.29

*Total Interstate Miles:
230.01

**Total Bridges:
1,136



Counties:

Canadian, Garfield, Grant, Kay, Kingfisher, Logan, Noble, **Oklahoma**, Payne

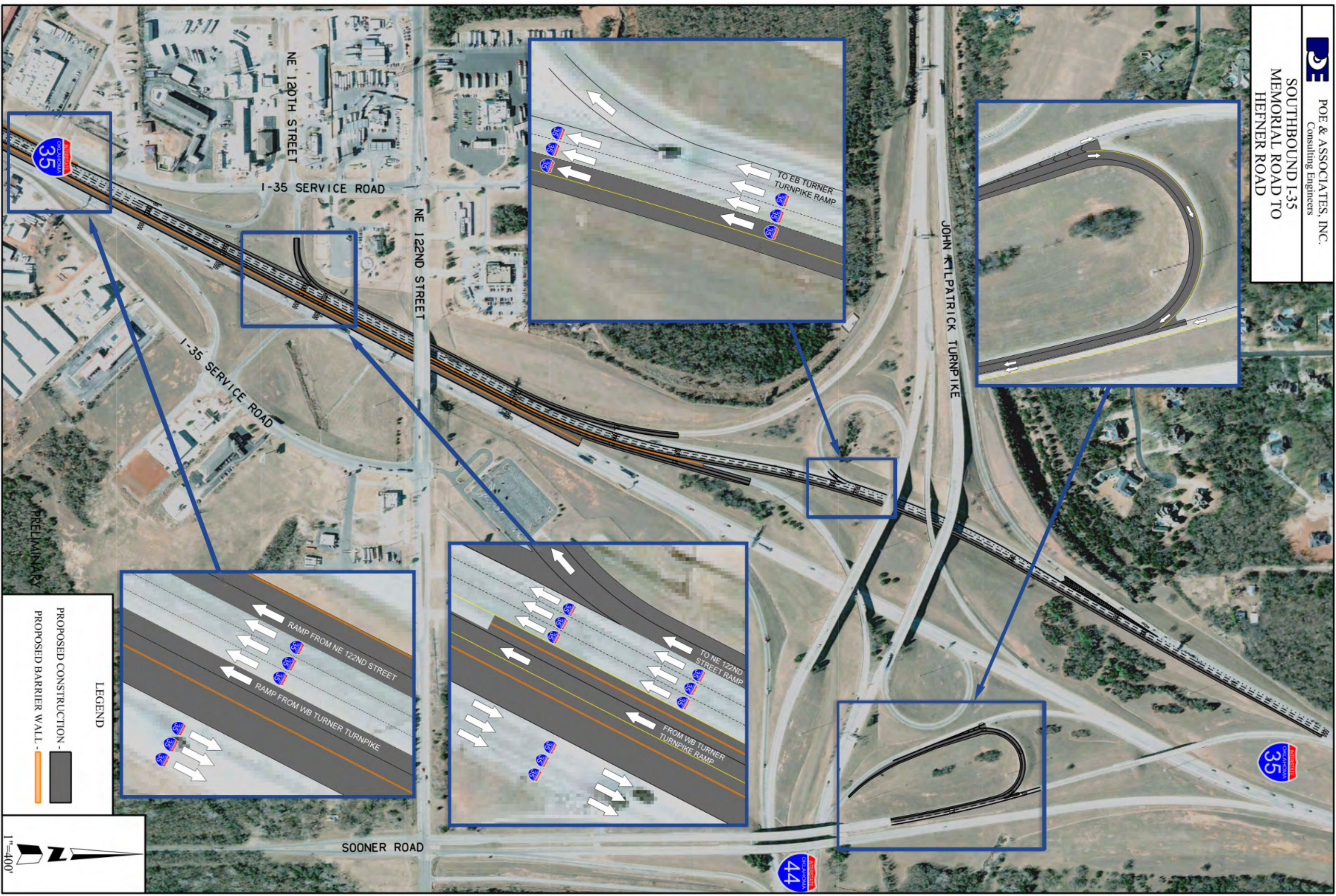


<http://www.odot.org/PublicMeetings>



POE & ASSOCIATES, INC.
Consulting Engineers

**SOUTHBOUND I-35
MEMORIAL ROAD TO
HEFNER ROAD**



LEGEND

- PROPOSED CONSTRUCTION - [Grey Box]
- PROPOSED BARRIER WALL - [Orange Line]

