



## Public Meeting

### I-35 Southbound: Memorial Road to NE 122<sup>nd</sup> Street

**JP 33771(04)**

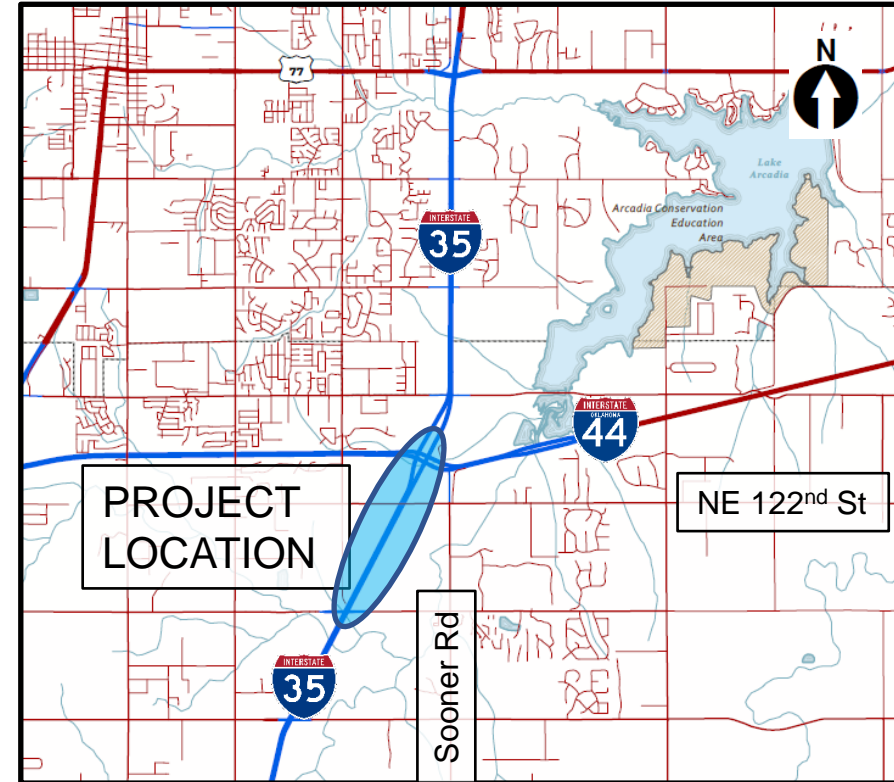
August 1, 2023



# Purpose of the Public Meeting

Inform the public about the proposed improvements for Southbound I-35 from Memorial Road to Hefner Road in Oklahoma County

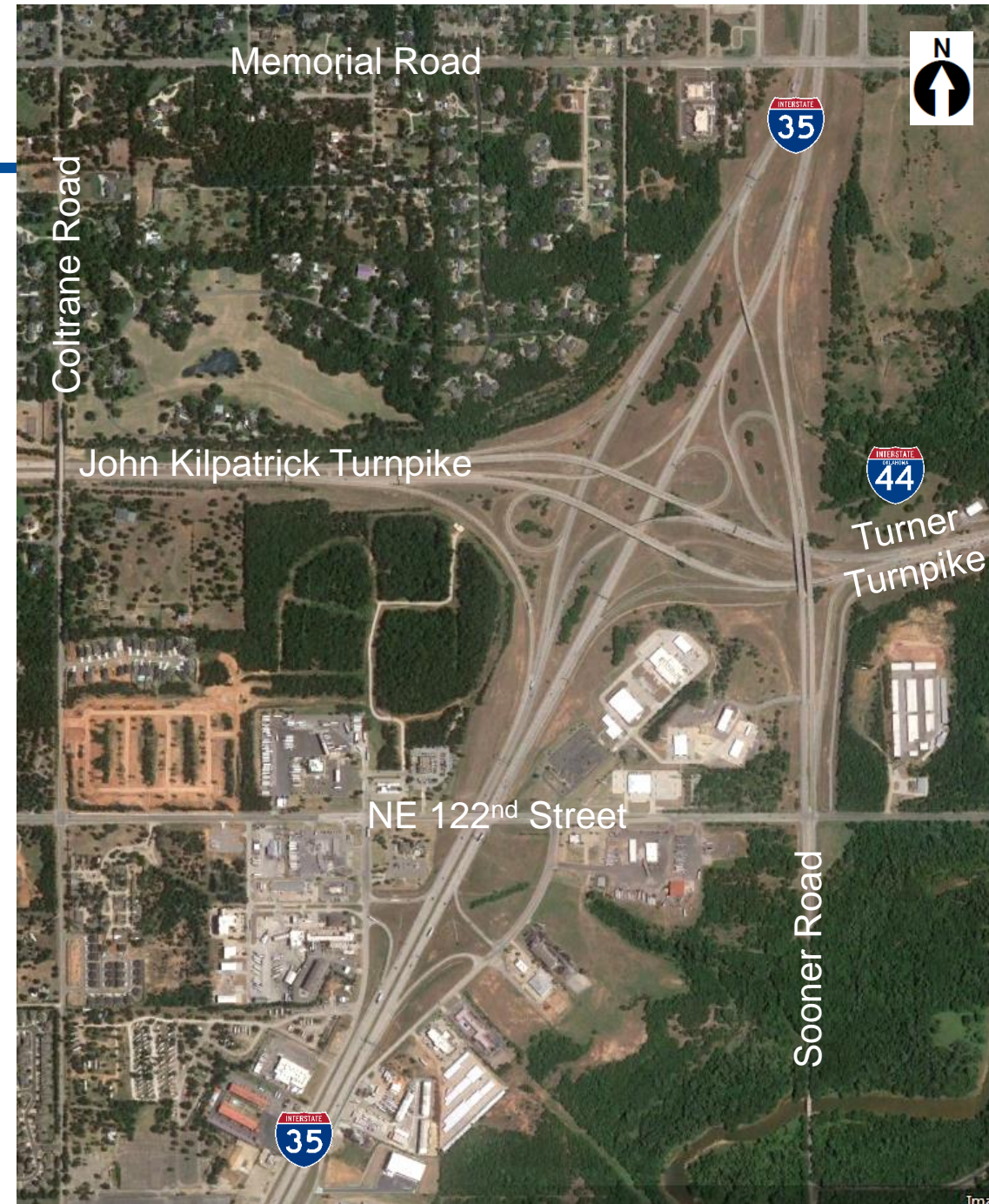
- Present need for the project
- Describe options considered
- Present the proposed improvements
- Obtain public input
- Outline schedule for the project





# Purpose of the Project

- Improve safety along I-35 corridor
- Improve traffic operations





# Purpose of the Project

## ➤ Traffic Volumes\*

- I-35 Southbound Mainline
  - 2022: 31,550 vehicles per day (vpd)
  - 2050: 48,820 vehicles per day (vpd)
- Existing volumes – Level of Service D
- Future volumes – Level of Service F

\*volumes assume no improvements





# Purpose of the Project

## ➤ Collisions

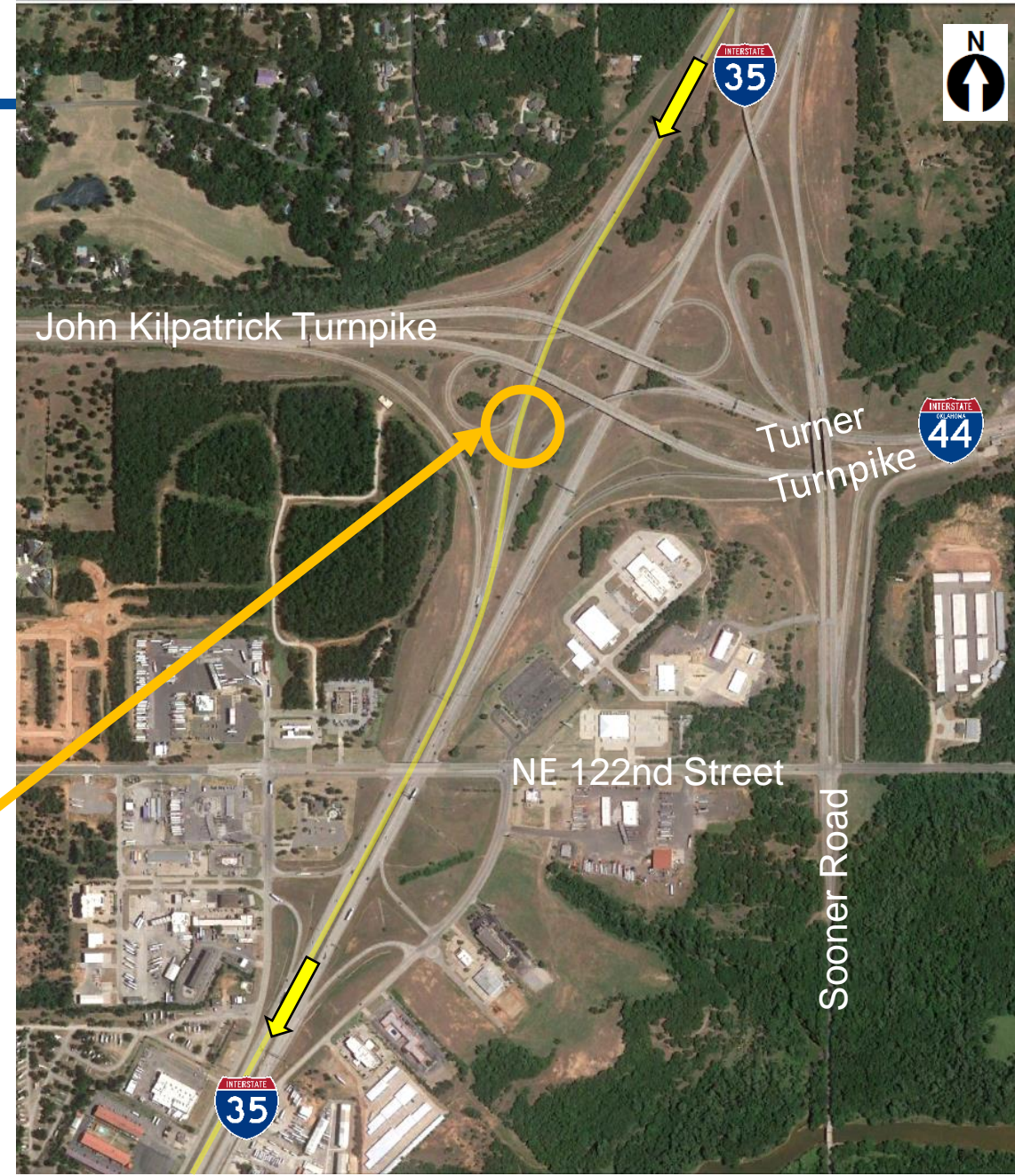
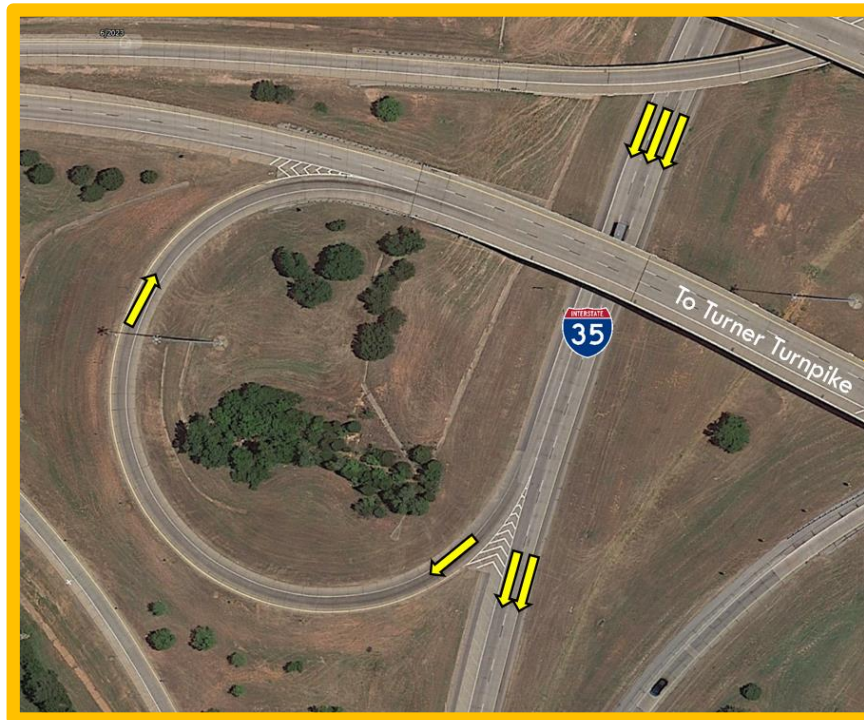
- 2017 through 2021:
  - 190 total collisions
  - 49 injury-related collisions
- Collisions cluster at:
  - Lane drop at loop ramp for eastbound Turner Turnpike
  - NE 122<sup>nd</sup> Street on and off ramps





# Project Challenges

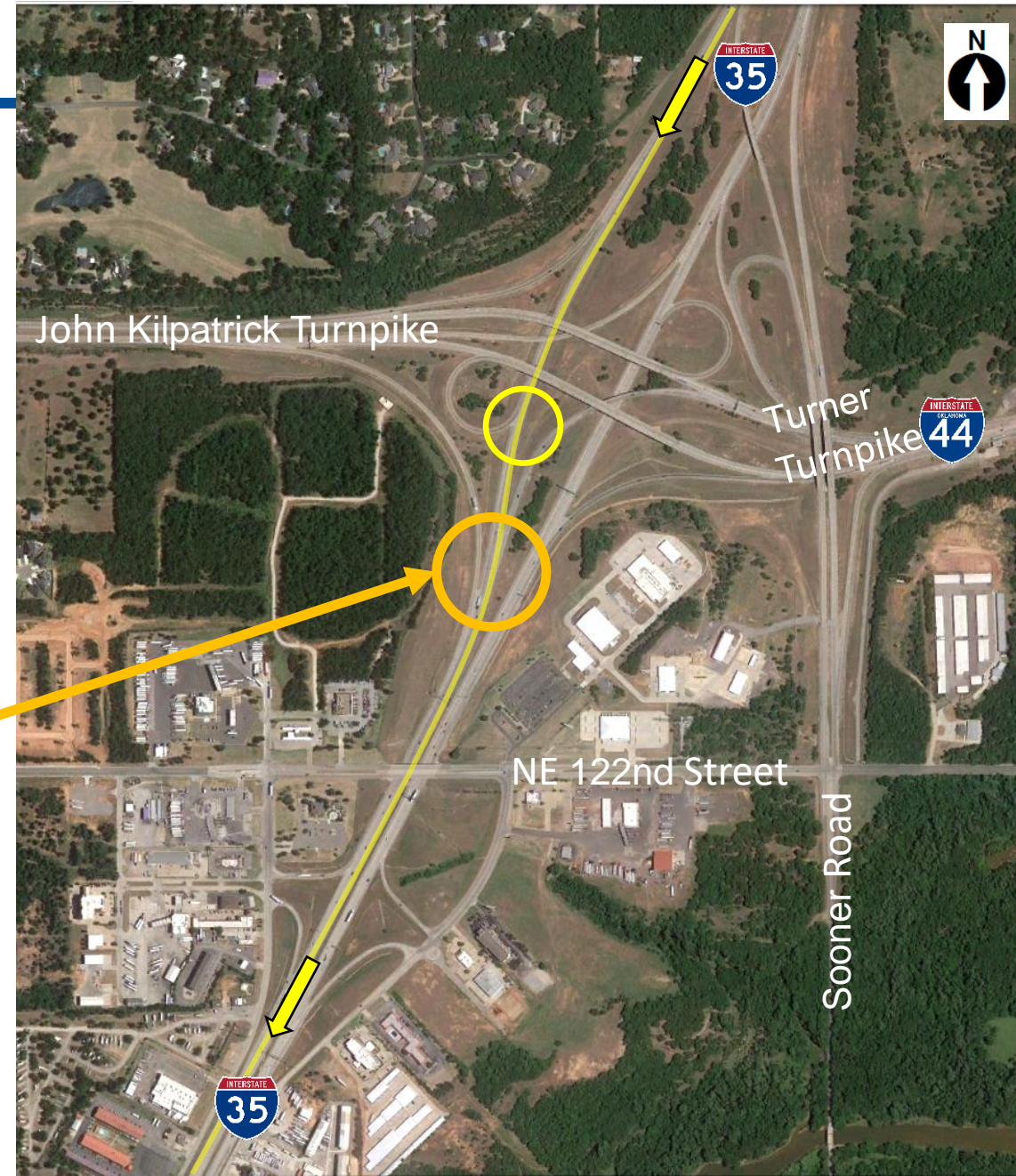
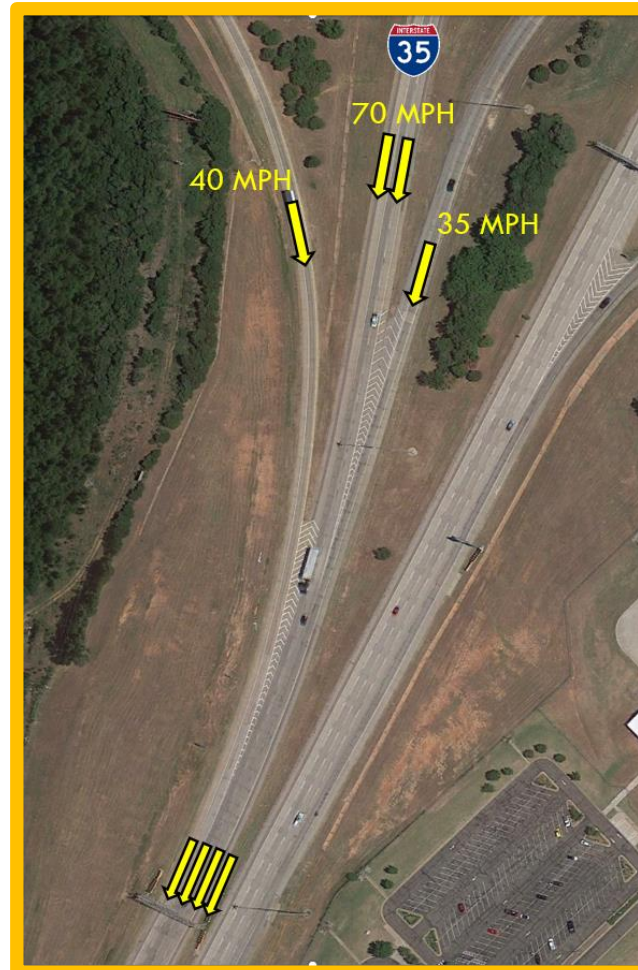
- Lane drop at EB I-44 loop ramp
  - 70 mph to 20 mph
  - Volumes do not warrant lane drop (only 3% of traffic)





# Project Challenges

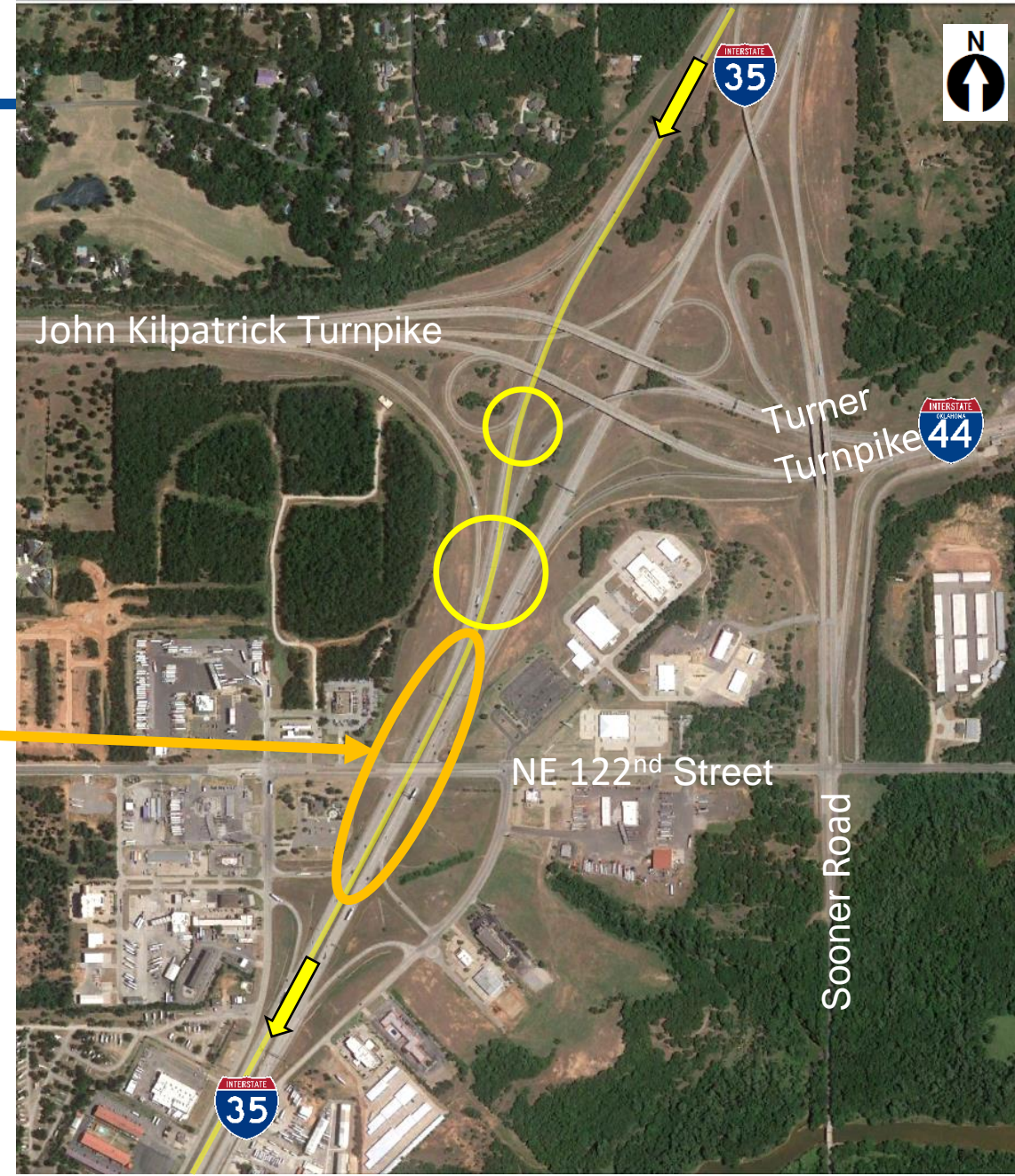
- Slower ramp traffic converging with faster I-35 traffic





# Project Challenges

- Left side ramp weave across I-35 through lanes to NE 122<sup>nd</sup> Street exit







# Project Challenges

- Left side ramp weave across southbound I-35 through lanes to NE 122<sup>nd</sup> Street exit
  - Requires 3 lane changes
  - Field counts – 2 hour interval:
    - 24 vehicle movements
    - 19 truck movements
    - 43 total movements
  - Estimated 375 movements per day
  - Anticipated to increase to 580 per day by 2050





# Project Challenges

## ➤ Ramp weave across southbound I-35 through lanes to NE 122<sup>nd</sup> Street exit

- Today, 4% of WB Turner to SB I-35 exits at 122<sup>nd</sup> Street (375/9,500)
- This location has 24% of the collisions (46/190)





# Potential Solutions

- Add third lane to southbound I-35
  - Needed to accommodate traffic volumes





# Potential Solutions

- Option 1: Close I-35 southbound off-ramp to NE 122<sup>nd</sup> Street



- Option 2: Restrict use of NE 122<sup>nd</sup> Street Off-Ramp with a barrier



- ← Southbound I-35 Traffic
- ← Traffic from Westbound Turner Turnpike



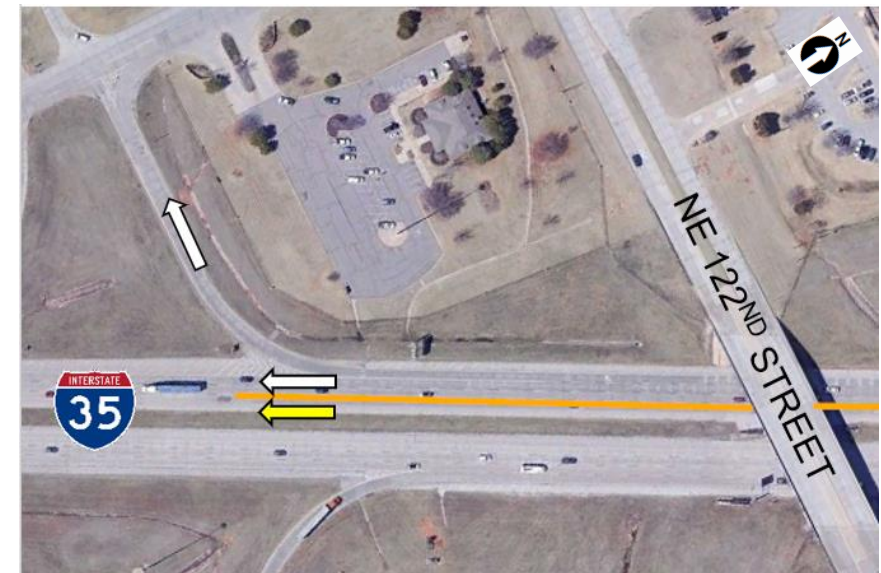


# Evaluation of Options

- Both ramp closure and barrier eliminate weave movement from eastbound Turner Turnpike ramp
- Closing ramp has a major impact to access to NE 122<sup>nd</sup> Street businesses
- Concrete barrier eliminates left side weave and reduces changes in access
  - Preferred solution



Closure of Off-Ramp to NE 122<sup>nd</sup> Street



Barrier Across NE 122<sup>nd</sup> Street Off-Ramp





# Proposed Improvements



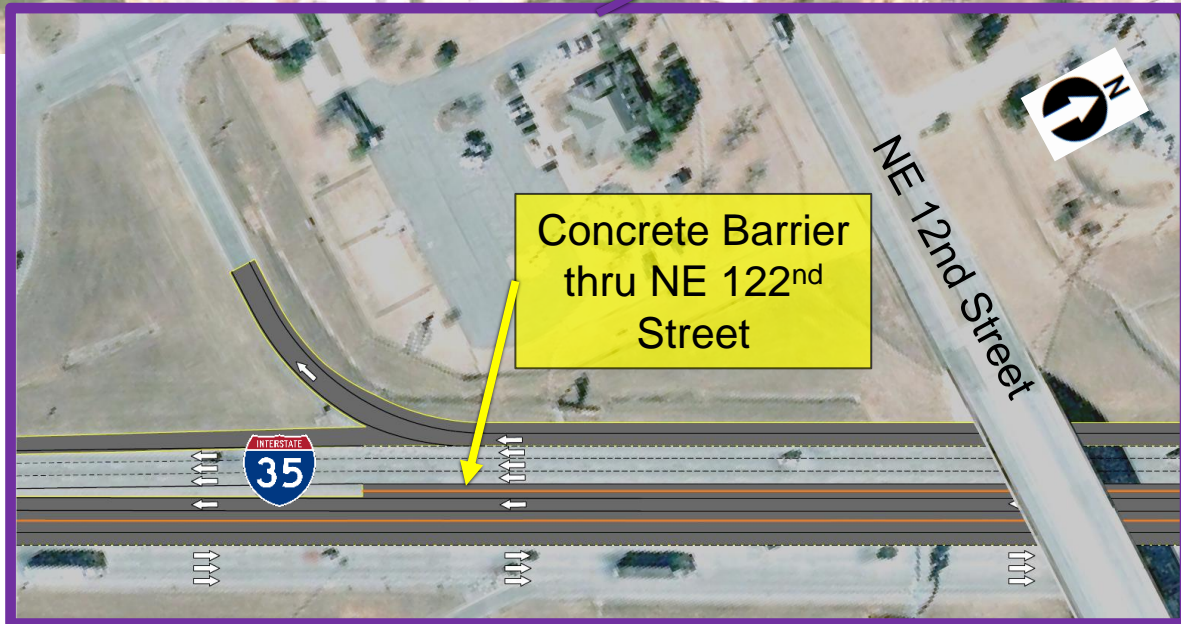
## Additional SB Lane:

- Eliminates lane drop at loop ramp
- Removes future bottleneck at EB Turner off-ramp





# Proposed Improvements

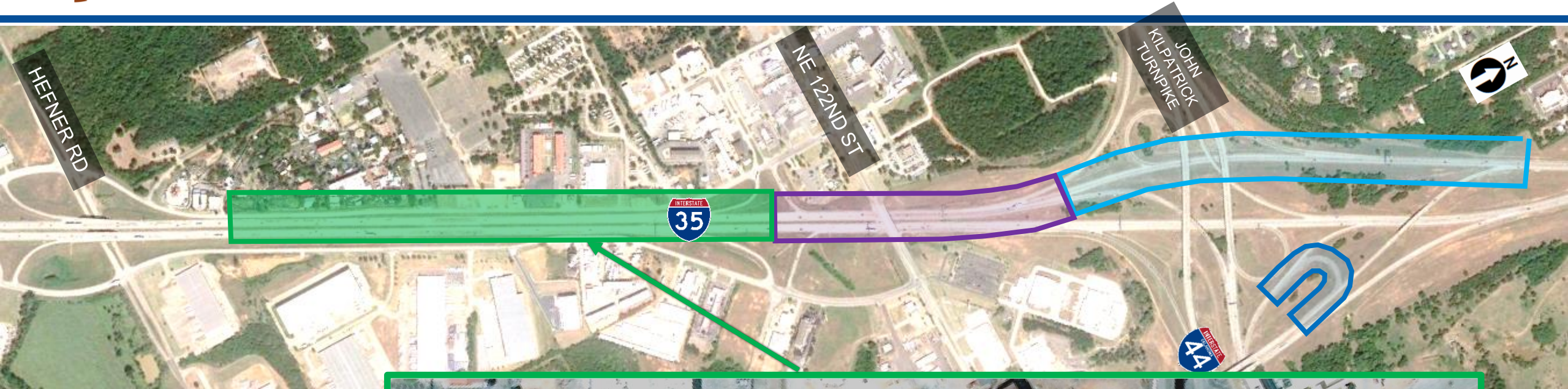


## Concrete Barrier:

- Eliminates multi-lane weave
- Improves overall travel speeds by more than 20% in future years



# Proposed Improvements



## Extension of SB on-ramp:

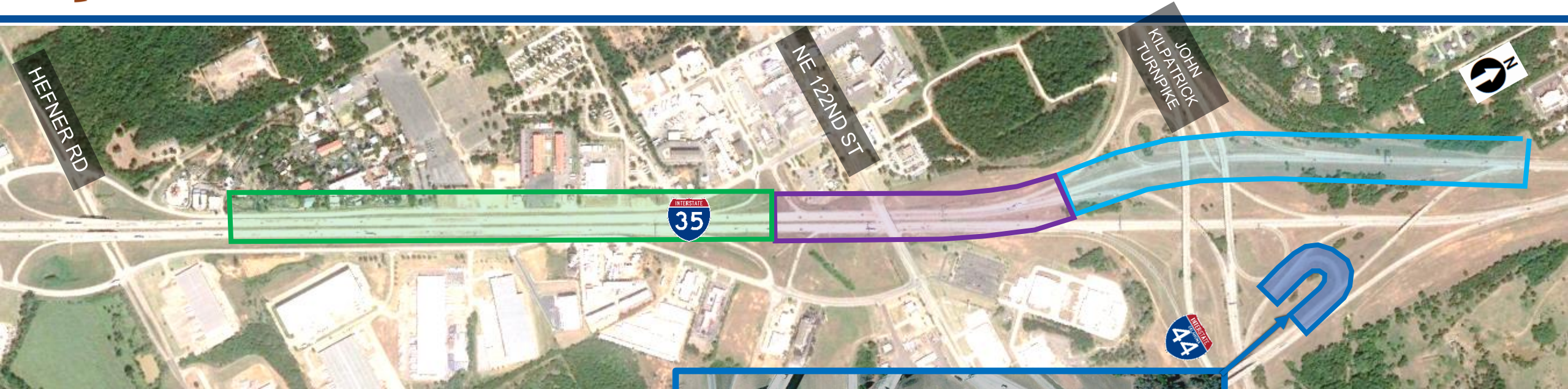
- Provides more acceleration distance for traffic entering I-35 from NE 122<sup>nd</sup> Street







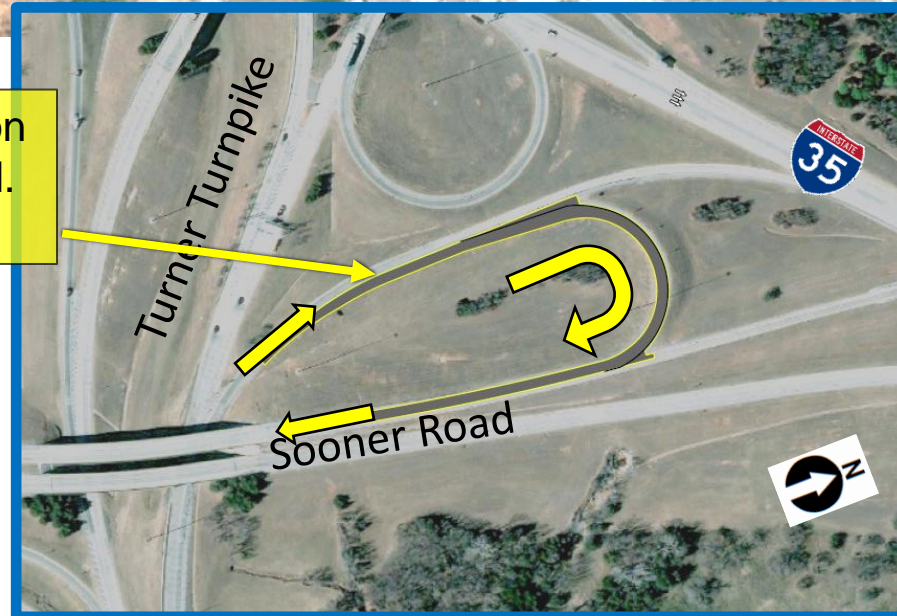
# Proposed Improvements



## Reconstruction of Sooner Rd. Ramp

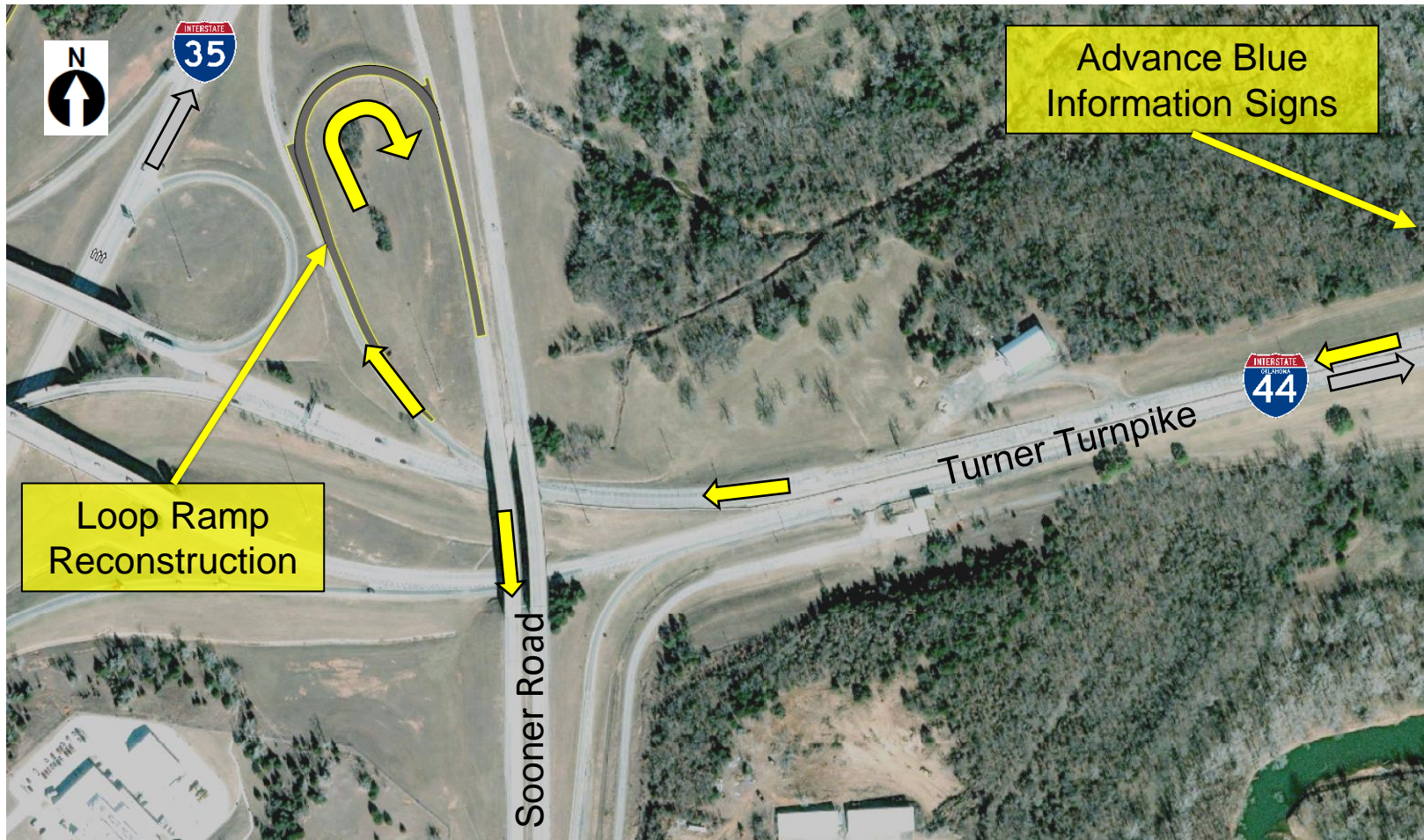
- Improves pavement condition

Reconstruction of Sooner Rd. Off-ramp





# Proposed Improvements





# Alternative Route to NE 122<sup>nd</sup> Street

## ➤ Current Travel Route

- Current Travel Time =  
1 Minute 34 Seconds





# Alternative Route to NE 122<sup>nd</sup> Street

## ➤ Current Travel Route

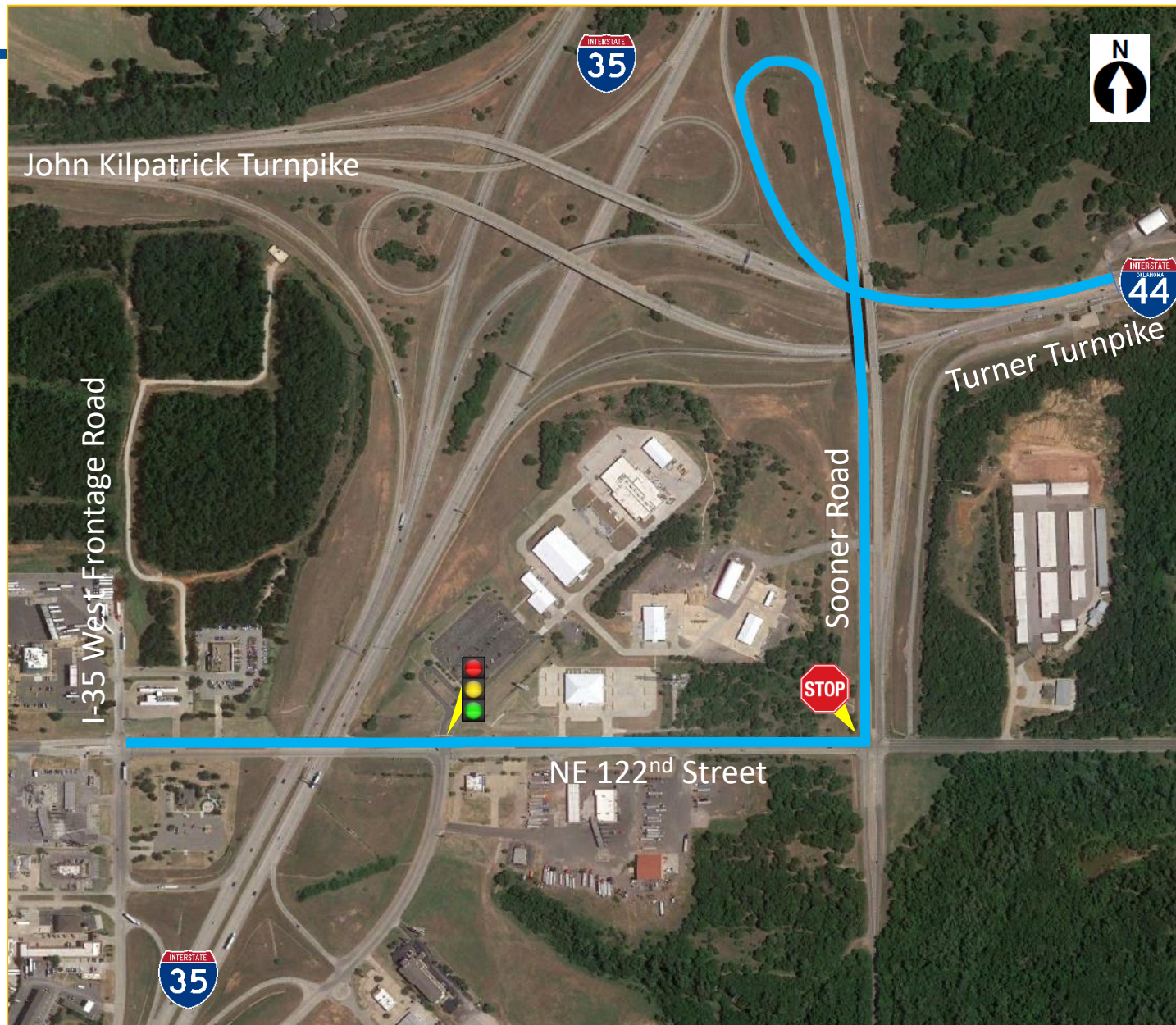
- Current travel time =  
1 Minute 34 Seconds

## ➤ Alternative Travel Route

- Alternative travel time =  
2 Minutes 38 Seconds

## ➤ Travel Time Difference

- 1 Minute 4 Seconds





# Impacts and Construction

- No significant impacts to the environment are anticipated
- Construction is currently in the ODOT 8-Year Plan to begin in FY 2026
- Traffic will be maintained during construction, but there may be increased congestion and delay
- Access will be maintained to all businesses and properties during construction





# Thank You!

## Please submit your comments by August 15, 2023

By email: [Environment@odot.org](mailto:Environment@odot.org)

By mail: Environmental Programs Division  
200 NE 21<sup>st</sup> Street  
Oklahoma City, OK  
73105

You can also leave your  
comment here tonight.

On the web: [www.odot.org/publicmeetings](http://www.odot.org/publicmeetings)