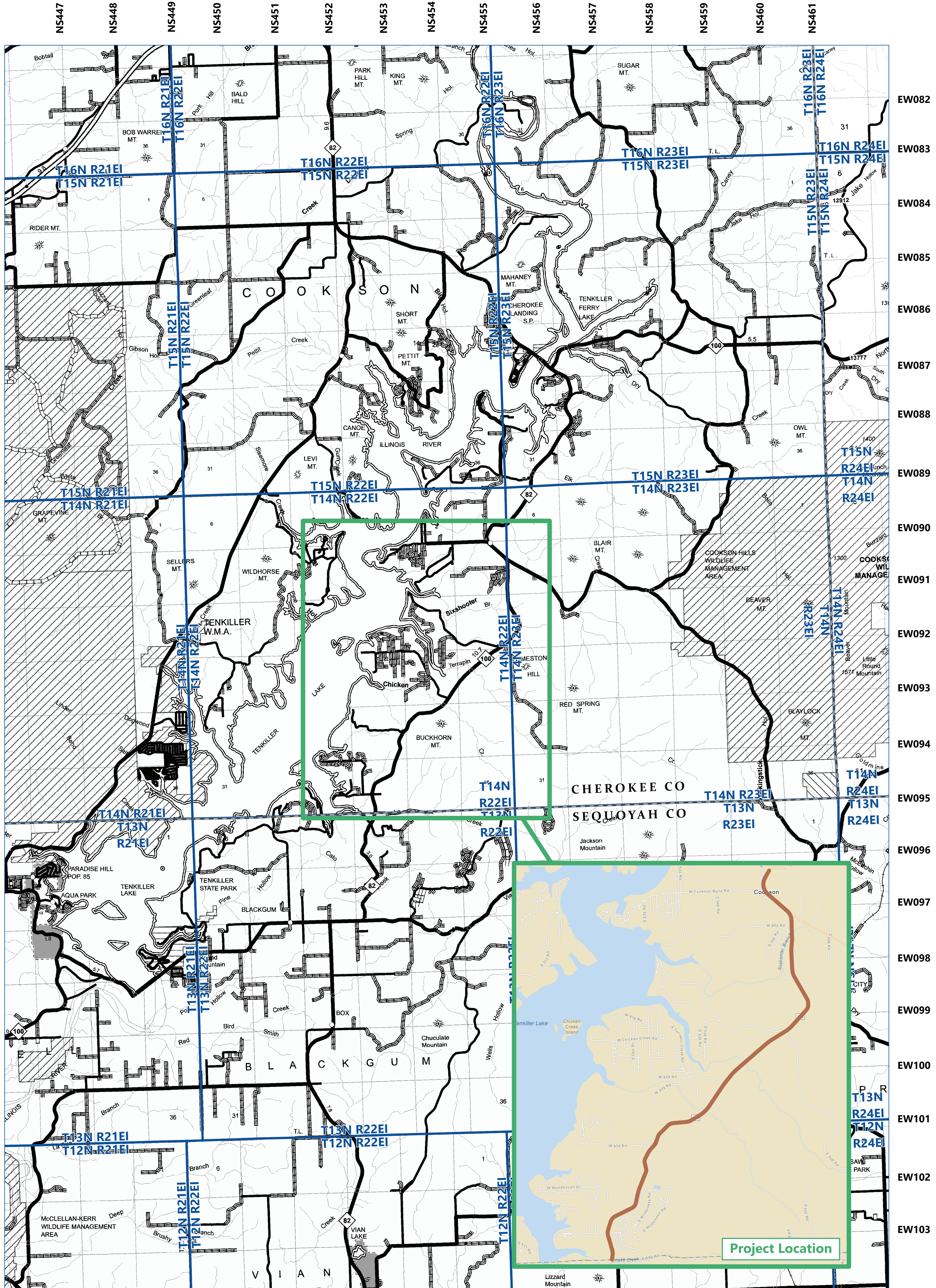




Project Location

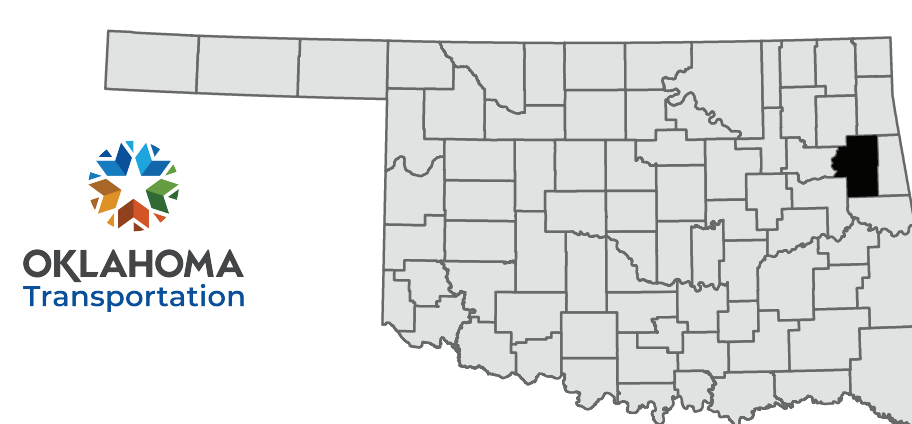


SH-82

From Approximately 500' North
of Sequoyah County Line,
North 6.7 Miles

CHEROKEE COUNTY

JP No. 32825(04)



OKLAHOMA
Transportation

- ▬ Project Location
- ▬ Proposed SH-82
- ▬ Township & Range Boundary

1 inch equals 0.75 mile

