

**FREE DISTRIBUTION ONLY**

OKLAHOMA TURNPIKE AUTHORITY  
 3500 Martin Luther King Blvd., P.O. Box 11357, Oklahoma City, Oklahoma 73116  
 (405) 425-3600  
 www.pikepass.com

The PIKEPASS saves time and money for the traveler. An electronic sensor on your vehicle records your passage and deducts the toll from a pre-paid account while driving non-stop on Oklahoma turnpikes. Non-users must stop and pay at toll booths or exact-change kiosks. For more information call 1-800-PIKEPASS.

Secretary of Transportation & Director of the Oklahoma Department of Transportation  
 CATHY HALL  
 Director of Oklahoma Turnpike Authority  
 MARY FALLIN  
 Governor

part of our success, see this great state and all its hidden treasures. business growth and opportunity. In the past 25 years, 25% of the state has been added in almost every industry. To list our state's best and offer on or out of state business destined to flourish. secret is out and people are coming from all over to see the treasures. For years, Oklahoma was one of the nation's best kept secrets. The Devron Tower to discovering the Center of the Universe in Tulsa, a treasure or look at the business opportunities Oklahoma offers. I encourage you to get on the road and discover your hidden treasures and industry. This is a giant step forward for transportation which is the backbone of commerce and industry. Finding your treasure in Oklahoma will go much more smoothly now that our plan to make a huge investment in modernizing the state's transportation systems and address the needs of every citizen is a giant step forward for transportation which is the backbone of commerce and industry. Finding your treasure in Oklahoma will go much more smoothly now that our plan to make a huge investment in modernizing the state's transportation systems and address the needs of every citizen is a giant step forward for transportation which is the backbone of commerce and industry.

OKLAHOMA  
 OFFICIAL STATE MAP  
 2013 = 2014  
 TREASURES ON THE ROAD LESS TRAVELED

**ROAM THE RANGE**

**WICHITA MOUNTAINS | LAWTON**  
 The Wichita Mountains Wildlife Refuge and Visitor's Center offers 15-miles of hiking trails for enthusiasts and photographers, as well as opportunities to mountain bike, rock climb, rappel, fish, camp and soak up the untouched natural habitat - 25 miles northwest of Lawton, from I-44 exit SH-49 **J-6**

# TREASURES ON THE ROAD LESS TRAVELED

**LITTLE SAHARA STATE PARK | WAYNOKA**  
 Get your adrenaline rush going with a two or four-wheel expedition to Little Sahara State Park, a favorite off-road playground for adventure enthusiasts. Little Sahara is a prime example of Oklahoma's uniquely diverse terrain with 1,600 acres of golden sand dunes, some as high as 75 feet - 4 miles south of Waynoka on SH-281 **H-2**



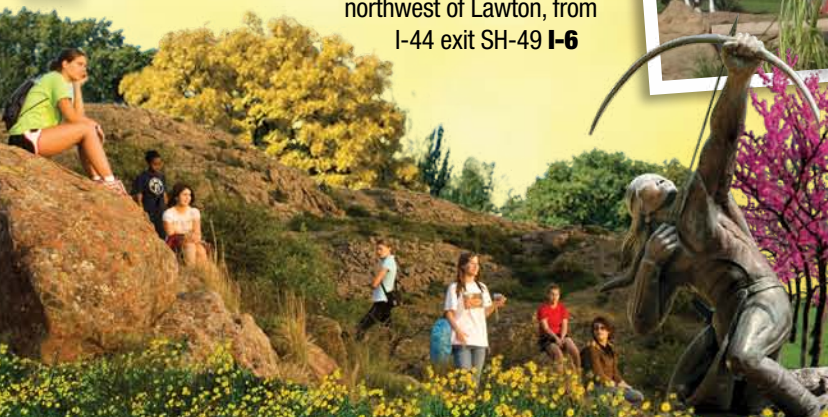
**SKYDANCE BRIDGE OKLAHOMA CITY**  
 Inspired by the "sky dance" of Oklahoma's State Bird, the Scissor-tailed Flycatcher, SkyDance Bridge is a 380-foot-long pedestrian bridge soaring 192 feet above I-40 - Downtown Oklahoma City, between Robinson and Harvey on I-40 **K-4**



**RUSH SPRINGS WATERMELON FESTIVAL RUSH SPRINGS**  
 Among many wonderful festivals in the state, celebrate all things watermelon at the annual Rush Springs Watermelon Festival with themed activities, carnival rides, over 100 arts and crafts vendors and family-friendly entertainment - Jeff Davis Park, located on East Blakely (Main Street) **J-6**



**WICHITA MOUNTAINS | LAWTON**  
 The Wichita Mountains Wildlife Refuge and Visitor's Center offers 15-miles of hiking trails for enthusiasts and photographers, as well as opportunities to mountain bike, rock climb, rappel, fish, camp and soak up the untouched natural habitat - 25 miles northwest of Lawton, from I-44 exit SH-49 **J-6**

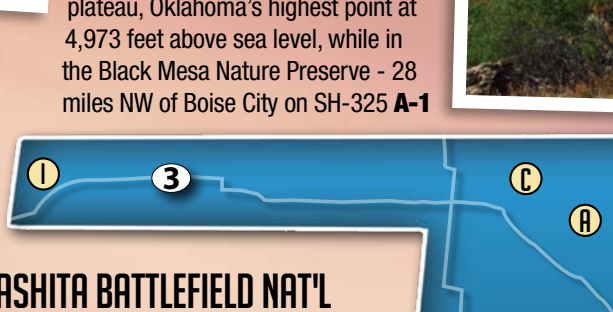


**SALT PLAINS NAT'L WILDLIFE REFUGE | JET**  
 With 11,000 acres of white salt flats and nearly 9,000 acres of saltwater, Great Salt Plains State Park is a geological treasure. A birding paradise and the world's only location for hourglass selenite crystals - 8 miles north of Jet on SH-38 **J-1**

**GO SPELUNKING ALABASTER CAVERNS | FREEDOM**  
 Tour the world's largest natural gypsum cave formed of alabaster gypsum, try your hand at wild caving, or enjoy hiking, camping and picnicking at one of Oklahoma's most scenic treasures - 6 miles south of Freedom on SH-50 **H-1**



**FLOAT AWAY ILLINOIS RIVER | TAHLEQUAH**  
 Rippling through the Cookson Hills, the Illinois River carts adventurers by canoe, kayak, or inflatable raft along the rocky bluffs and dense forest - North of Tahlequah on SH-10 **O-3**



**BLACK MESA STATE PARK KENTON**  
 Mesa takes its name from the layer of black lava rock that coated the mesa about 30 million years ago. Visitors can hike to the top of the plateau, Oklahoma's highest point at 4,973 feet above sea level, while in the Black Mesa Nature Preserve - 28 miles NW of Boise City on SH-325 **A-1**

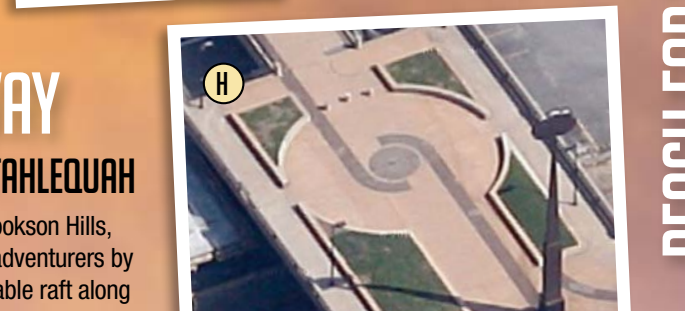


**WASHITA BATTLEFIELD NAT'L HISTORIC SITE | CHEYENNE**  
 Visit Washita Battlefield National Historic Site and take a tour of the 1868 surprise attack on a Southern Cheyenne village by Lt. Col. George A. Custer. Walk the battlefield where Peace Chief Black Kettle died and relive those fateful events - 2 miles west of Cheyenne, accessible via SH-47 and SH-74A **G-4**



**MARLAND MANSON PONCA CITY**  
 The original home of Oklahoma's 10th governor, E.W. Marland, the Marland Estate Mansion is 48,000 square feet, worth over \$1.4 million and a history as the "Palace on the Prairie" - East of US-77 north on Monument Road **K-1**

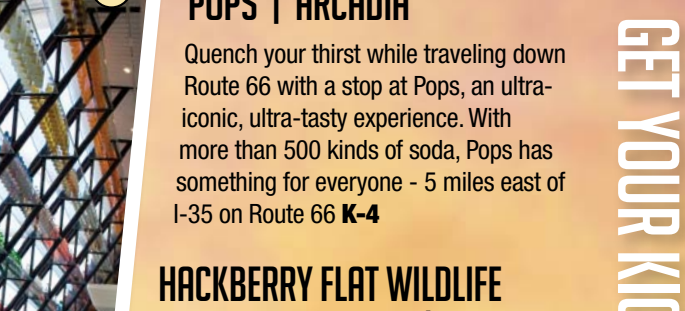
**TULSA AIR & SPACE MUSEUM**  
 Experience 100 years of aerospace history through interactive exhibits at the museum & planetarium as there is fun and entertainment for all ages - East of 36th Street North (Port Rd.), across from Tulsa Zoo/ Mohawk Park entrance on North 74th East Avenue **H-3**



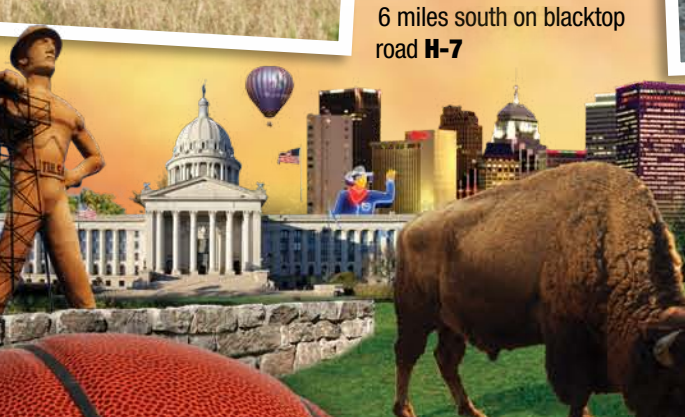
**CENTER OF THE UNIVERSE TULSA**  
 A mystery of sound that must be heard to be believed, the Center of the Universe is an audio anomaly. If you stand in the circle, every noise you make reverberates back with far greater intensity, while noises outside the circle are muffled, distorted, or even silenced - Located on the pedestrian Boston Street Bridge between 1st and Archer Street **M-3**



**POPS | ARCADIA**  
 Quench your thirst while traveling down Route 66 with a stop at Pops, an ultra-ionic, ultra-tasty experience. With more than 500 kinds of soda, Pops has something for everyone - 5 miles east of I-35 on Route 66 **K-4**



**HACKBERRY FLAT WILDLIFE MANAGEMENT AREA | FREDERICK**  
 Over 200 species of waterfowl, shorebird and other wetland-dependent bird species call this 7,120-acre wildlife oasis home - 1 mile south of Frederick on US-183, 3 miles east on Airport Rd., 6 miles south on blacktop road **H-7**

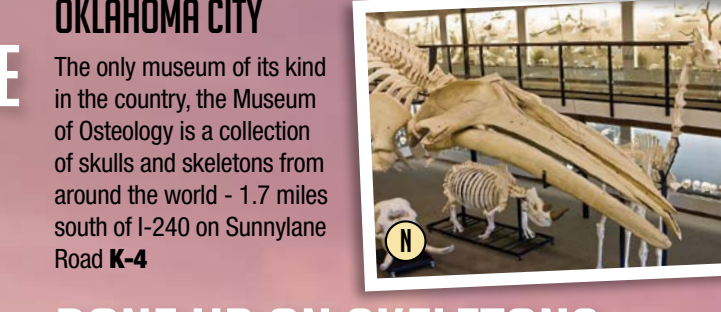


**RT. 66 VINTAGE IRON MOTORCYCLE MUSEUM MIAMI**  
 Cruise down the Mother Road to the Route 66 Vintage Iron Motorcycle Museum in Miami and explore over 40 vintage motorcycles, the largest vintage motorcycle photo collection in the country and an ever-growing Evil Knievel memorabilia collection - Located on Route 66 in downtown Miami **O-1**

**CHEROKEE HERITAGE CENTER TAHLEQUAH**  
 The Cherokee Heritage Center offers an interactive exploration of life during the 1890s with demonstrations of ancient cultural practices like flint knapping, basketry and Cherokee marble games - 6 miles south of Tahlequah, just off US-62 **O-3**

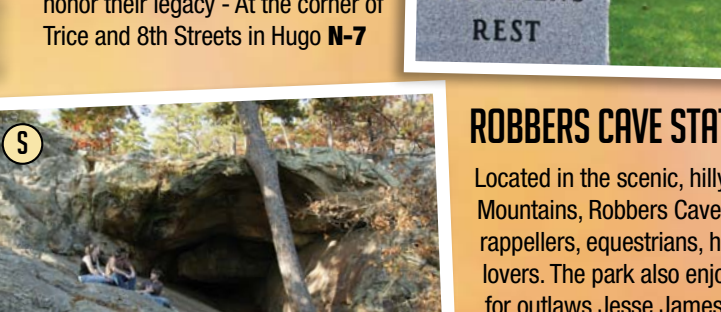


**BLUE HOLE PARK SALINA**  
 The Blue Hole Park is family-owned with camping sites, concession stands and cabins, it's a perfect warm-weather getaway - 7 miles east of Salina on Kenwood Road **O-2**



**GUTHRIE GREEN | TULSA**  
 The newly-opened Guthrie Green, a showcase of "green" technology, is an urban garden and performance space in The Brady Arts District of downtown Tulsa - Between Brady and Cameron and Boston and Cincinnati Avenues **M-3**

**MUSEUM OF OSTEOLOGY OKLAHOMA CITY**  
 The only museum of its kind in the country, the Museum of Osteology is a collection of skulls and skeletons from around the world - 1.7 miles south of I-240 on Sunnyslane Road **K-4**



**OKLAHOMA TURNPIKE AUTHORITY**  
 3500 Martin Luther King Blvd., P.O. Box 11357, Oklahoma City, Oklahoma 73116  
 (405) 425-3600  
 www.pikepass.com

**WILL ROGERS TURNPIKE (80.5 miles)**  
**TURNER TURNPIKE (88.0 miles)**  
**CIMARRON TURNPIKE (67.7 miles)**  
**MUSKOGEE TURNPIKE (13.1 miles)**  
**H. E. BAILEY TURNPIKE (10 miles)**  
**INDIAN NATION TURNPIKE (100.2 miles)**  
**JOHN KILPATRICK TURNPIKE (25.1 miles)**  
**CHICKASAW TURNPIKE (13.9 miles)**  
**CREEK TURNPIKE (13.2 miles)**

**OKC THUNDER & P BAR FARMS | OKLAHOMA CITY & HYDRO**  
 Home court may be Oklahoma City, but the Thunder is a statewide treasure. The Thunder attracts excited fans from all over, including those at P Bar Farms near Hydro. Another hidden gem, the farm offers a corn maze and other family-friendly activities in the fall - I-40 from the west exit 84, from the east exit 88, follow old RT. 66 for 3 miles **I-4**

**BONE UP ON SKELETONS CHICKASAW CULTURAL CENTER | SULPHUR**  
 Celebrate native culture with a visit to the largest tribal cultural center in the nation. The 96,000 square foot complex immerses visitors in the vibrant, on-going story of the Chickasaws using modern technology and richly theatrical and interactive exhibits - 10 miles east of I-35 on Cooper Memorial Dr. **L-6**

**SHOWMEN'S REST | HUGO**  
 Since 1937, the little town of Hugo has been known as Circus City, USA. Showmen's Rest, a special portion of Hugo's Mount Olivet Cemetery, is dedicated as the final resting place for "all showmen under God's big top." Elaborately carved monuments honor their legacy - At the corner of Trice and 8th Streets in Hugo **N-7**

**ROBBERS CAVE STATE PARK | WILBURTON**  
 Located in the scenic, hilly woodlands of the San Bois Mountains, Robbers Cave State Park is a favorite for rappellers, equestrians, hikers and all-around outdoor lovers. The park also enjoys notoriety as a former hideout for outlaws Jesse James and Belle Starr - 5 miles north of Wilburton on SH-2 **O-5**

