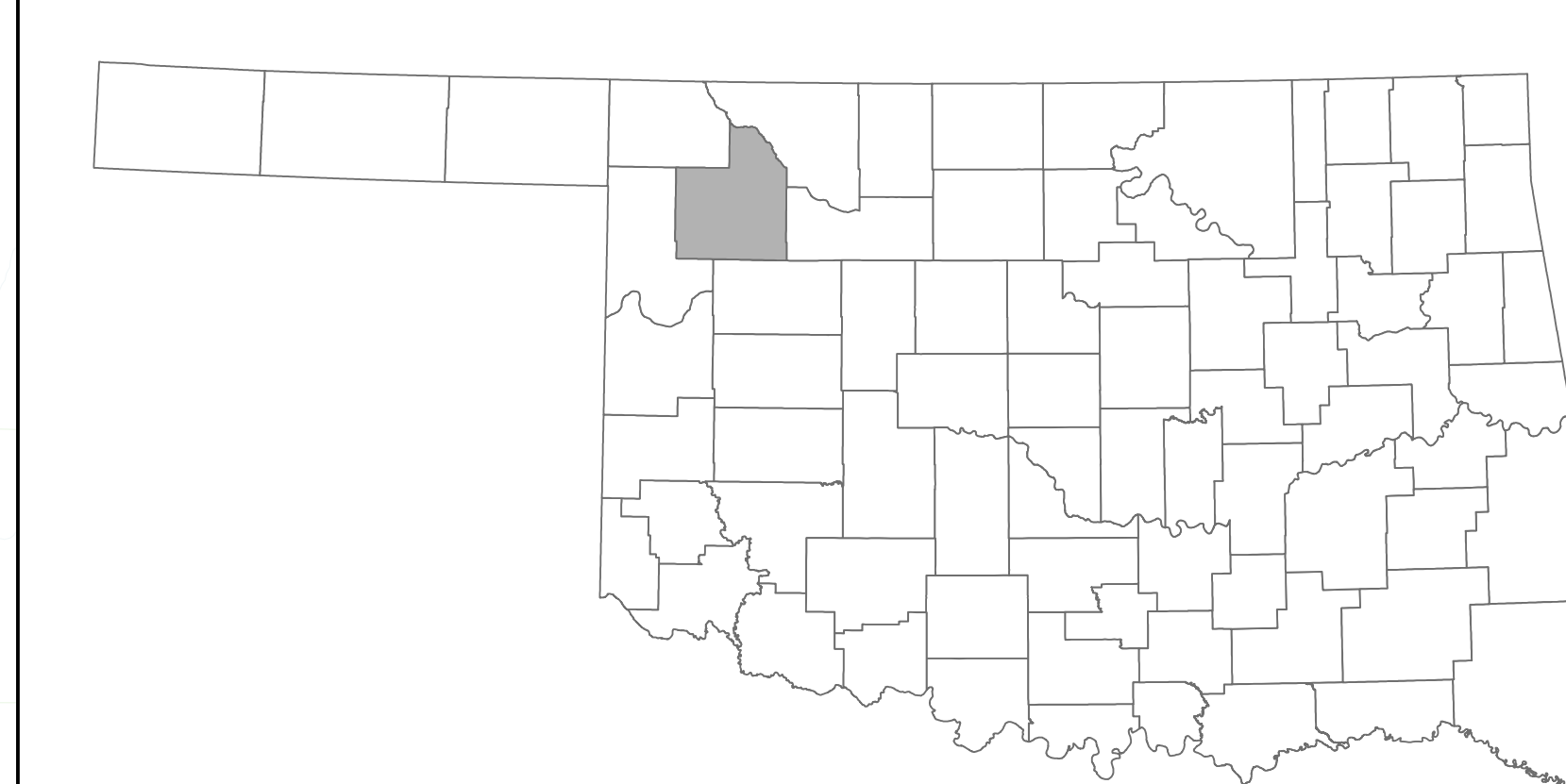
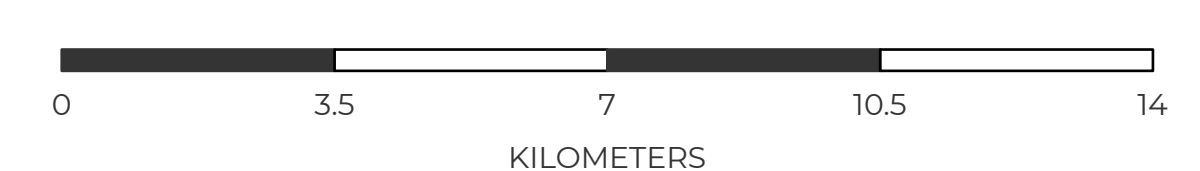
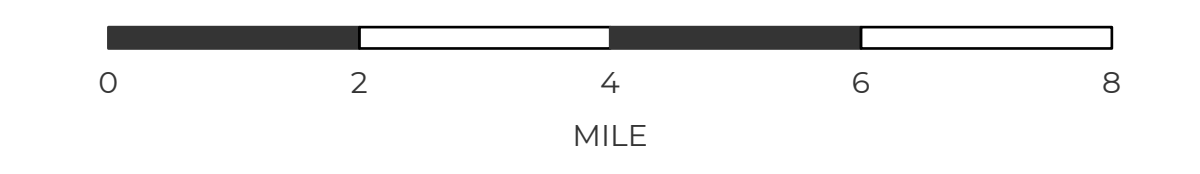
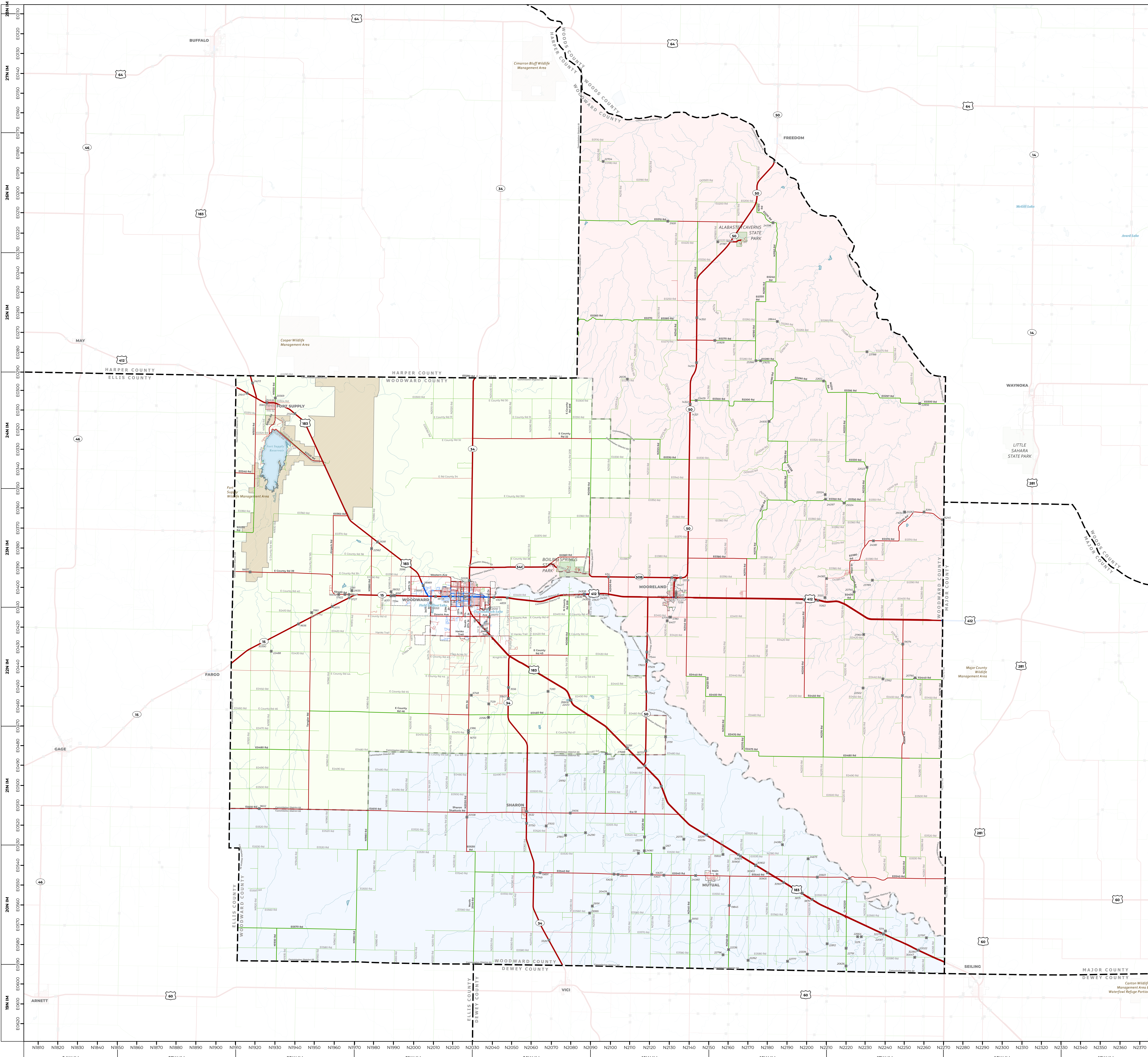


# WOODWARD

## COUNTY

CENSUS YEAR 2020 POPULATION: 20,470

- INTERSTATE
- U.S. HIGHWAY
- STATE HIGHWAY
- HIGHWAY
- COLLECTOR
- LOCAL ROAD
- ASPHALT
- CONCRETE
- BRICK
- UNPAVED
- BRIDGE
- STREAM
- LAKE
- WILDLIFE REFUGE AREA
- WILDLIFE MANAGEMENT AREA
- STATE PARK
- US MILITARY INSTALLATION
- CITY LIMIT
- COUNTY COMMISSIONER DISTRICT
- COUNTY LINE



THIS MAP INDICATES THOSE ROADS KNOWN TO THE DEPARTMENT TO BE OPEN TO PUBLIC TRAVEL. PLACEMENT OF A ROAD ON THE MAP HAS NO RELATIONSHIP TO MAINTENANCE RESPONSIBILITY BY ANY LEVEL OF GOVERNMENT.

COPIES OF THIS MAP ARE AVAILABLE FOR PUBLIC USE AT NOMINAL COST.

OKLAHOMA DEPARTMENT OF TRANSPORTATION  
PRINTING SERVICES  
200 NE 25TH STREET  
OKLAHOMA CITY, OKLAHOMA 73105-3204  
PHONE: (405) 521-2666

ALL RIGHTS RESERVED - COMPUTER GENERATED  
APRIL 2, 2024

