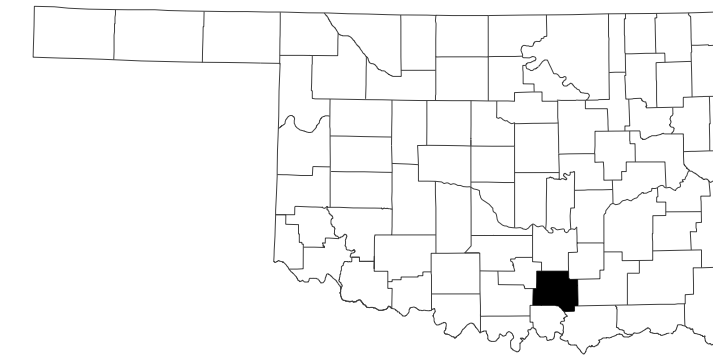


**COUNTY LOCATION MAP**



**J/P 36178(04)  
SWO 5656(1)  
JOHNSTON COUNTY**

**1090+00.00 - 3015+36.89  
UTILITY QUALITY LEVEL:**

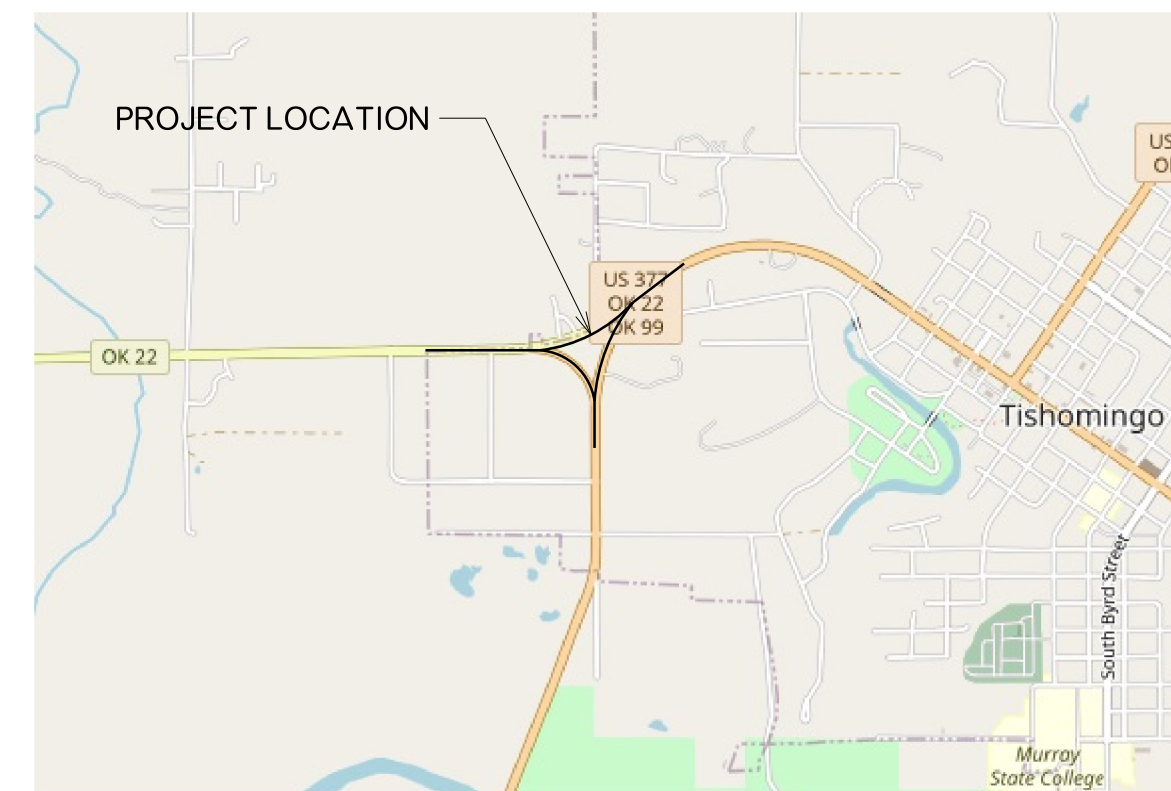
A PROFESSIONAL OPINION OF THE QUALITY AND RELIABILITY OF THE UTILITY INFORMATION. SUCH RELIABILITY IS DETERMINED BY THE MEANS AND METHODS OF THE PROFESSIONAL. EACH OF THE FOUR EXISTING UTILITY DATA QUALITY LEVELS IS ESTABLISHED BY DIFFERENT METHODS OF DATA COLLECTION AND INTERPRETATION.

- QUALITY LEVEL D (QL-D)** THE COLLECTION OF EXISTING UTILITY RECORD INFORMATION (AS-BUILTS) FROM UTILITY PROVIDERS, MUNICIPALITIES, COUNTIES, AND OTHER AGENCIES WITHIN THE AREA OF INVESTIGATION. THESE UTILITIES INCLUDE: STORM, STEAM, SANITARY, WATER, GAS, PETROLEUM, FIBER OPTIC, CABLE TV, TELEPHONE, AND ELECTRICAL.
- QUALITY LEVEL C (QL-C)** INFORMATION OBTAINED BY SURVEYING AND PLOTTING VISIBLE ABOVE GROUND UTILITY FEATURES, AND BY USING PROFESSIONAL JUDGEMENT IN CORRELATING THIS INFORMATION TO QUALITY LEVEL D INFORMATION.
- QUALITY LEVEL B (QL-B)** INFORMATION OBTAINED THROUGH THE APPLICATION OF APPROPRIATE SURFACE GEOPHYSICAL METHODS TO DETERMINE THE EXISTENCE AND APPROXIMATE HORIZONTAL POSITION OF SUB-SURFACE UTILITIES.
- QUALITY LEVEL A (QL-A)** PRECISE HORIZONTAL AND VERTICAL LOCATION OF UTILITIES OBTAINED BY THE ACTUAL EXPOSURE (OR VERIFICATION OF PREVIOUSLY EXPOSED AND SURVEYED UTILITIES) AND SUBSEQUENT MEASUREMENT OF SUB-SURFACE UTILITIES, USUALLY AT A SPECIFIC POINT. MINIMALLY INTRUSIVE EXCAVATION EQUIPMENT IS TYPICALLY USED TO MINIMIZE THE POTENTIAL FOR FULL UTILITY DAMAGE. A PRECISE HORIZONTAL AND VERTICAL LOCATION, AS WELL AS OTHER UTILITY ATTRIBUTES, IS SHOWN ON THE PLAN DOCUMENTS.

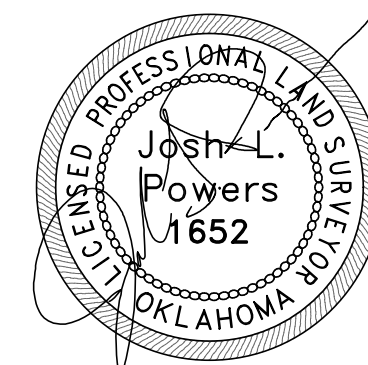
**UTILITY STATEMENT:**

THE UNDERGROUND UTILITIES SHOWN HAVE BEEN LOCATED FROM FIELD SURVEY INFORMATION AND ONE-CALL LOCATES. UNIVERSAL SURVEYING & MAPPING MAKES NO GUARANTEE THAT THE UNDERGROUND UTILITIES SHOWN COMPRISE ALL SUCH UTILITIES IN THE AREA, EITHER IN SERVICE OR ABANDONED. USM FURTHER DOES NOT WARRANT THAT THE UNDERGROUND UTILITIES SHOWN ARE IN THE EXACT LOCATION INDICATED, ALTHOUGH USM DOES CERTIFY THAT THEY ARE LOCATED AS ACCURATELY AS POSSIBLE FROM THE INFORMATION AVAILABLE.

1. SUE QUALITY LEVEL B USED ON ALL UTILITY LINES SURVEYED, UNLESS OTHERWISE NOTED OR DEPICTED.
2. THE USE OR RELIANCE UPON THESE PLANS DOES NOT RELIEVE THE CONTRACTOR FROM THEIR DUTY TO COMPLY WITH THE APPLICABLE UTILITY DAMAGE PREVENTION LAWS AND REGULATIONS, INCLUDING, BUT NOT LIMITED TO, GIVING NOTIFICATION TO UTILITY OWNER'S "ONE-CALL" CENTERS BEFORE EXCAVATION.
3. ALL COORDINATES ARE BASED ON OKLAHOMA STATE PLANE SOUTH ZONE NAD 83 (2011) / NAVD 88 (GEOID18)
4. ALL DEPTH OF COVER FOR UTILITIES SURVEYED WERE ELECTRONICALLY OBTAINED AND AVERAGED. MORE PRECISE DEPTHS OF UTILITIES WILL REQUIRE A LEVEL A SUE SURVEY FOR VERIFICATION.



DIGITALLY SIGNED 12-12-2023



SHEET INDEX		
SHEET NUMBER	START STATION	SHEET TITLE
1	N/A	COVER
2	N/A	PROJECT REPORT
3	1090+00	SUE SURVEY
4	1105+00	SUE SURVEY
5	2010+00	SUE SURVEY
6	2025+00	SUE SURVEY
7	3000+00	SUE SURVEY
8	3015+00	SUE SURVEY
9	1090+00	LINE DATA TABLES
10	2010+00	LINE DATA TABLES
11	3000+00	LINE DATA TABLES

PROJECT CONTROL SUPPLIED BY OTHERS				
PT NUMBER	NORTHING	EASTING	ELEVATION	DESCRIPTION
1	331362.5917	2360618.929	713.198074	SET 3/4 REBAR W/CAP BANCROFT BM
2	331492.5769	2361221.004	719.471632	SET 3/4 REBAR W/CAP BANCROFT BM
3	331494.4239	2361691.926	713.812144	SET MAG W/WASHER BANCROFT BM
4	331443.1165	2361675.506	713.14963	SET MAG W/WASHER BANCROFT BM
5	331813.3236	2362210.191	713.244212	SET 3/4 REBAR W/CAP BANCROFT BM
6	332001.0269	2362754.798	696.470748	SET MAG W/WASHER BANCROFT BM
7	332324.5411	2363075.708	706.301787	SET 3/4 REBAR W/CAP BANCROFT BM
8	332586.4752	2363300.404	717.081953	SET 3/4 REBAR W/CAP BANCROFT BM
9	331883.2647	2362584.38	700.328307	SET 3/4 REBAR W/CAP BANCROFT BM
10	331638.5596	2362501.633	703.040166	SET MAG W/WASHER BANCROFT BM
11	331057.6287	2362197.838	708.106233	SET 3/4 REBAR W/CAP BANCROFT BM
12	330403.4762	2362299.756	702.526569	SET 3/4 REBAR W/CAP BANCROFT BM
13	330083.9378	2362272.523	697.95397	SET 3/4 REBAR W/CAP BANCROFT BM
7400	330060.9942	2362272.442	697.789	SD-11 J-35-593
7401	321829.3426	2359712.725	659.558	SD-11 J-35-591
7402	322718.1993	2360070.853	647.534	SD-11 J-35-592

LEVEL D or C DOCUMENTATION SUPPLIED	
CONTACT	FILES SUPPLIED
ONEOK GAS TRANSPORTATION OGT SOUTH	EMAIL STATED NOT IN AREA
ONG/GAS TRANSMISSION LINE WATCH & PROTECT S00220	PROVIDED PDF OF LINES
OKLAHOMA NATURAL GAS- EAST S00445	PROVIDED PDF OF LINES
TRACE FIBER NETWORK S00979	PROVIDED IMAGES OF LINES
USIC/OG&E/ARDMORE T01508	PROVIDED PDF OF LINES
JOHNSTON CO RWD3/TISHOMINGO T09580	NO MAPS PROVIDED
CHICKASAW NATION (FIBER) T10785	EMAIL STATED NOT IN AREA
TISHOMINGO CITY OF T10905	NO MAPS PROVIDED
AT&T DISTRIBUTION T11158	PROVIDED IMAGES OF LINES

COMPANY	PHONE NUMBER	NAME OF CONTACT	EMAIL
ONEOK GAS TRANSPORTATION OGT SOUTH	918-588-7111	ONEOK REAL ESTATE SERVICES	ENCROACHMENTS@ONEOK.COM
ONG/GAS TRANSMISSION LINE WATCH & PROTECT S00220	405-551-6689	CORY MODDELMOG	ONGMAPPING@ONEGAS.COM
OKLAHOMA NATURAL GAS- EAST S00445	405-551-6689	CORY MODDELMOG	ONGMAPPING@ONEGAS.COM
TRACE FIBER NETWORK S00979	580-235-6671	LEROY COOKSEY	LEROY.COOKSEY@TRACEFIBER.COM
USIC/OG&E/ARDMORE T01508	NOT PROVIDED	MATT HILL	HILLMC@OGE.COM
JOHNSTON CO RWD3/TISHOMINGO T09580	580-371-2141	NOT PROVIDED	NOT PROVIDED
CHICKASAW NATION (FIBER) T10785	580-235-6671	LEROY COOKSEY	LEROY.COOKSEY@TRACEFIBER.COM
TISHOMINGO CITY OF T10905	580-371-2141	NOT PROVIDED	NOT PROVIDED
AT&T DISTRIBUTION T11158	539-444-1026	JOE ANDERSON	JA492C@ATT.COM

SYMBOL LEGEND:		LINETYPE LEGEND:	
POWER POLE	STORM SEWER MANHOLE	WATER	FIBER OPTIC
LIGHT POLE	WATER METER	TELECOMMUNICATION	GAS
FIRE HYDRANT	GAS VALVE	GAS AND OIL	STORM SEWER
WATER VALVE	GAS METER	ELECTRICAL	SANITARY SEWER
TELEPHONE PULL BOX	VENT		
TELEPHONE RISER BOX			
POWER PEDESTAL			
ELECTRICAL PULL BOX			
SAN. SEWER MANHOLE			

216 W. 6th Avenue, Stillwater, OK 74074 - Phone: (405)372-0000  
Fax: (405)372-0002 - www.usmsurveying.com - Oklahoma CA #6858

OKLAHOMA DEPARTMENT OF TRANSPORTATION  
SURVEY DIVISION

**SUE COVER SHEET**

SWO\_5656(1)

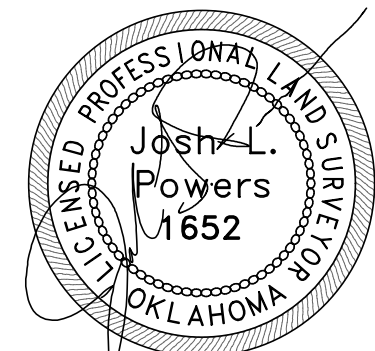
PLS	
DRAWN	
CHECKED	
APPROVED	
CREW	

COUNTY JOHNSTON HIGHWAY SH-377 STATE JOB NO. J/P 36178(04) SHEET NO. 1

# US 377 and SH-22 Johnston Co.

Subsurface Utility Survey Report

DIGITALLY SIGNED 12-12-2023



Josh Powers, PE  
12-4-2023

## Subsurface Utility Engineering Report

US 377 and SH-22 Johnston Co.

Tishomingo, OK

### Introduction

The following report summarizes the results from the subsurface utility engineering (SUE) services conducted for the designated project corridor. This report and all data associated with this report were prepared exclusively for:

**Bancroft Design Inc.**

Attn: Daniel McPeck  
923 S. Lowry St.  
Stillwater, OK  
405.743.3355

Professional judgment has been exercised to reasonably investigate, develop, and cohesively present the finding along US 377 and SH-22 in Tishomingo, OK. The contractor is legally required to call 811 prior to excavation. The data presented here is time-sensitive and represents the results of the utility designating efforts at the time of the field investigation.

The subject SUE designating investigation results are presented in digital deliverables, including this report. To assure meaningful and proper usage and minimize the risk of misinterpretation, this data must be kept, regarded, and interpreted in a collective, integral manner in accordance with and with an understanding of CI/ASCE 38-02 standard guidelines.

USM performs professional Subsurface Utility Engineering services in accordance with Common Ground Alliance Best Practices 19.0 and ASCE 38-02 guidelines and generally accepted engineering and surveying principles and practices at this time. However, a possibility exists that abandoned, forgotten, non-detectable, undocumented, or newly installed utilities may not get mapped using standard records research and geophysical survey procedures. Utilities possessing the characteristics mentioned below can be missed while following standard utility designating and locating methods.

- Utilities without apparent records available and without apparent surface features.
- Utilities with record information that is illegible, misleading, or incomplete.
- Utilities that are inaccurately reported or inaccurately represented by the utility owner as lying a significant distance from the true position.
- Abandoned utilities
- Excessively deep utilities beyond detection limits of standard designating equipment.
- Non-conductive utilities buried in clay soil without any apparent surface features.
- Facilities installed subsequent to the SUE field investigation effort.

**Background:**

The project corridor is located in Section Five (5), Township Four (4) South, Range Six (6) East of the Indian Meridian (I.M.). The project corridor is an area of approximately 4.3 miles in length with multiply intersection along route.

The Project Corridor is shown in Figure 1.

Figure 1: Project Corridor

### Utility Ownership

Table 1 specifies utility ownership and representative contact information for utilities identified within the subject SUE investigation project limits. Information is current as of the date of submittal.



Table 1. Utility Ownership and Contacts

COMPANY	PHONE NUMBER	NAME OF CONTACT	EMAIL	DOCUMENTATION SUPPLIED
ONEOK Gas Transmission OGT SOUTH	918-588-7111	ONEOK Real Estate Services	encroachments@oneok.com	Email stated that they were Clear and NOT IN AREA
ONG/Gas Transmission Line Watch&Protect 500220	405-551-6689	Corey Modellmog	ongmapping@onegas.com	Supplied PDFs of Utilities in Area
Oklahoma Natural Gas- East 500445	405-551-6689	Corey Modellmog	ongmapping@onegas.com	Supplied PDFs of Utilities in Area
Trace Fiber Network 500979	580-235-6671	Leroy Cooksey	LEROY.COOKSEY@tracefiber.com	Supplied PDFs of Utilities in Area
AT&T Distribution T11158	539-444-1026	Joe Anderson	Ja492c@att.com	Supplied PDFs of Utilities in Area
USIC/OG&E/ARDMORE T01508	NOT PROVIDED	Matt Hill	hillmc@oge.com	Supplied PDFs of Utilities in Area
Tishomingo City of T10905	NOT PROVIDED	NOT PROVIDED	NOT PROVIDED	NO ESTABLISHED CONTACT
Johnston Co. RWD3/Tishomingo T09580	NOT PROVIDED	NOT PROVIDED	NOT PROVIDED	NO ESTABLISHED CONTACT
CHICKASAW NATION (FIBER) T10785	580-235-6671	Leroy Cooksey	LEROY.COOKSEY@tracefiber.com	Email stated that they were Clear and NOT IN AREA

### Supplemental Comments Regarding Existing Facilities

Users of this information are reminded that results presented with this submittal are representative of the completion of field investigation and are pragmatic interpretations based on the systematic designating effort executed. Limitations may still exist, as previously discussed in this report.

### Utility Descriptions

The following utility-specific sections are general, non-inclusive overviews of utilities encountered within the project limits as outlined above and within the scope.

SUE designating investigations have produced considerable data and digital information presented via the SUE Plan. The objective is to depict and provide representative information for subsurface utilities present within specified project limits. The following provides a descriptive summary of the depicted utilities and discusses the quality level of that information.

#### Telecommunications

AT&T Distribution was listed on the OKIE811 Survey-Design Ticket. USM was able to make contact and receive PDFs of their utilities in the scoped area. USM located AT&T lines to a Quality Level B and confirmed that the lines were AT&T lines by utility signage associated with the lines.

Trace Fiber was listed on the OKIE811 Survey-Design Ticket. USM was able to make contact and receive PDFs of their utilities in the scoped area. Leroy Cooksey mentions Trace has three (3) 1.25" HDPE ducts along with one (1) 216FSMA fiber cable. USM located Trace Fiber lines to a Quality Level B and confirmed that the lines were Trace Fiber lines by utility signage associated with the lines.

Chickasaw Nation (Fiber) was listed on the OKIE811 Survey-Design Ticket. USM established contact and received a reply email stating that they had no lines in the area. USM was able to confirm the statement and found no lines of Chickasaw Nation in the scoped area.

#### Electric

OGE was listed on the OKIE811 Survey-Design Ticket. USM established contact and received Level D documentation for the OGE lines within the scoped area. USM was able to connect to OGE drops and locate them to Level B in the scoped area.

#### Oil/Natural Gas

ONEOK Gas Transmission was listed on the OKIE811 Survey-Design Ticket. USM established contact and received a reply email stating that they had no lines in the area. Timothy Mikles stated no line in the scoped area but did provide information on a 4in line they have that was south of the scoped area. This line was shown along US 377. USM was able to confirm the statement and found no lines of ONEOK in the scoped area.

ONG/Gas Transmission Line Watch&Protect and Oklahoma Natural Gas-East was listed on the OKIE811 Survey-Design Ticket. USM was able to make contact and receive PDFs of their utilities in the scoped area. Hayden Campbell commented that all the lines shown in the maps he provided were of 2in. In the reply email from Hayden, he also states that red lines are coated

steel, Green Lines are Polyethylene, lines with blue dots are service lines, and the Green dot with an R is an above-ground regulator. The QM-53 line running through the middle is a high-pressure 2in steel line. USM located ONG lines to a Quality Level B and confirmed that the lines were ONG Lines by utility signage and markers associated with the lines.

#### Water

Johnston Co. RWD3/Tishomingo was listed on the OKIE811 Survey-Design Ticket. USM made efforts to contact you, but nothing was provided within the 14-day window request. Water Valves and Meters were found throughout the route. These lines were not locatable and made to a Level C. The few lines that were located in the scoped area were crossings at roads. These lines are listed in the PDF and are shown as Level B.

#### Sanitary Sewer

The City of Tishomingo was listed on the OKIE811 Survey-Design ticket. USM could not make contact to receive any Level D maps within the 14-day request. Few lines were found with the manholes being located and collected to a Level C throughout the scoped area.

### Utility Discrepancies, Issues, and Notes

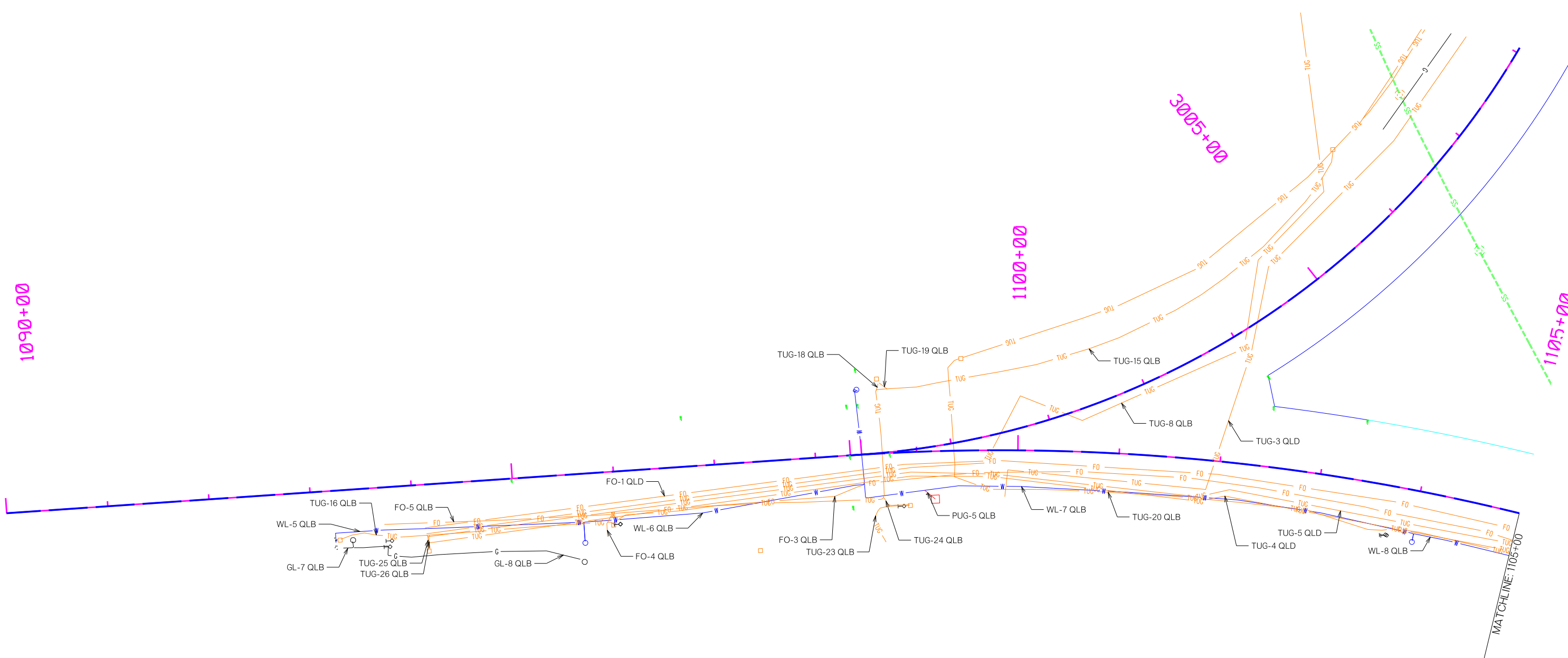
The Level D documentation correlated well with the field data. Minor discrepancies can be attributed to utilities not being as-built after construction.

The SUE project deliverable will contain all Level D documentation received throughout the project.

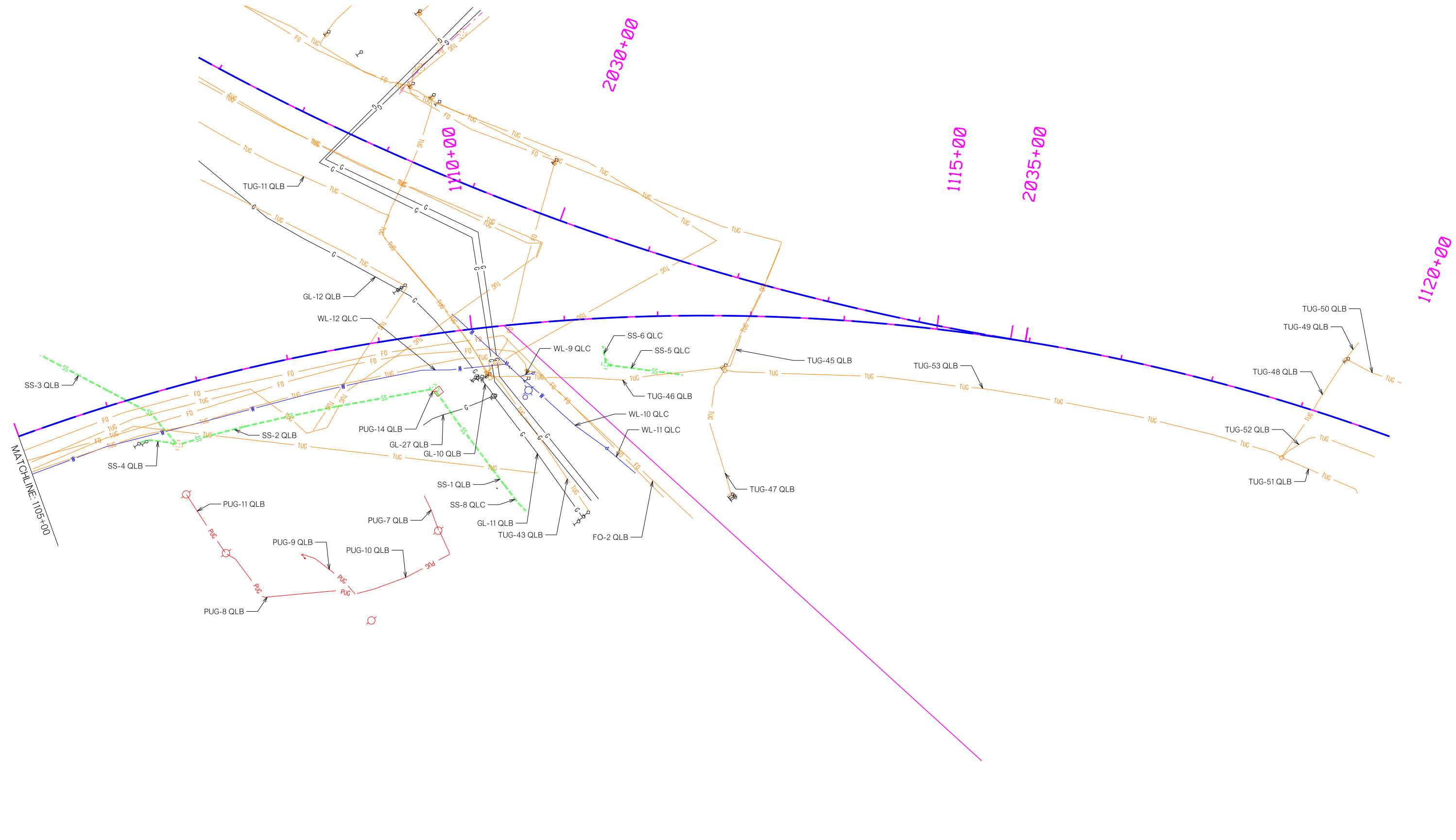
### Recommendations

USM recommends vacuum excavations (test holes) or advanced geophysical methods be used to investigate further utilities identified as potentially conflicting with the proposed designs to define the positional and facility characteristics better and explore conflict mitigation alternatives. Further exploration is also recommended on Quality Levels C and D, depicted utilities where more accurate positioning is necessary to assess conflicts and clarify or resolve discrepancies between the field observations and record data.

PLS			OKLAHOMA DEPARTMENT OF TRANSPORTATION SURVEY DIVISION	
DRAWN			<h2>SUE PROJECT REPORT</h2> <p>SWO_5656(1)</p>	
CHECKED				
APPROVED				
CREW				
COUNTY	JOHNSTON	HIGHWAY	SH-377	STATE JOB NO. J/P 36178(04) SHEET NO. 2



OKLAHOMA DEPARTMENT OF TRANSPORTATION SURVEY DIVISION	
<b>SURVEY DATA SHEET</b>	
SWO_5656(1)	
PLS	
DRAWN	
CHECKED	
APPROVED	
CREW	
COUNTY	JOHNSTON
HIGHWAY	SH-377
STATE JOB NO.	J/P 36178(04)
SHEET NO.	3



SCALE 0 100 200 300 400 500 Feet

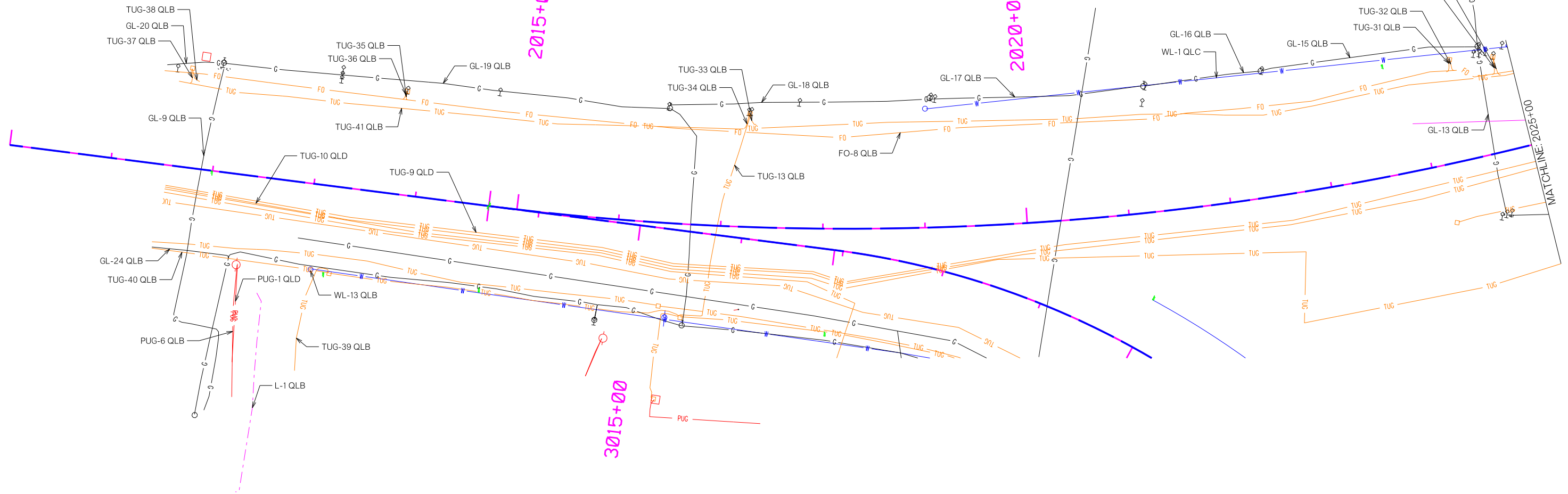
PLS				
DRAWN				
CHECKED				
APPROVED				
CREW				
OKLAHOMA DEPARTMENT OF TRANSPORTATION SURVEY DIVISION				
<b>SURVEY DATA SHEET</b>				
SWO_5656(1)				
COUNTY	JOHNSTON	HIGHWAY	SH-377	STATE JOB NO. J/P 36178(04) SHEET NO. 4

2010+00

2015+00

2020+00

2025+00



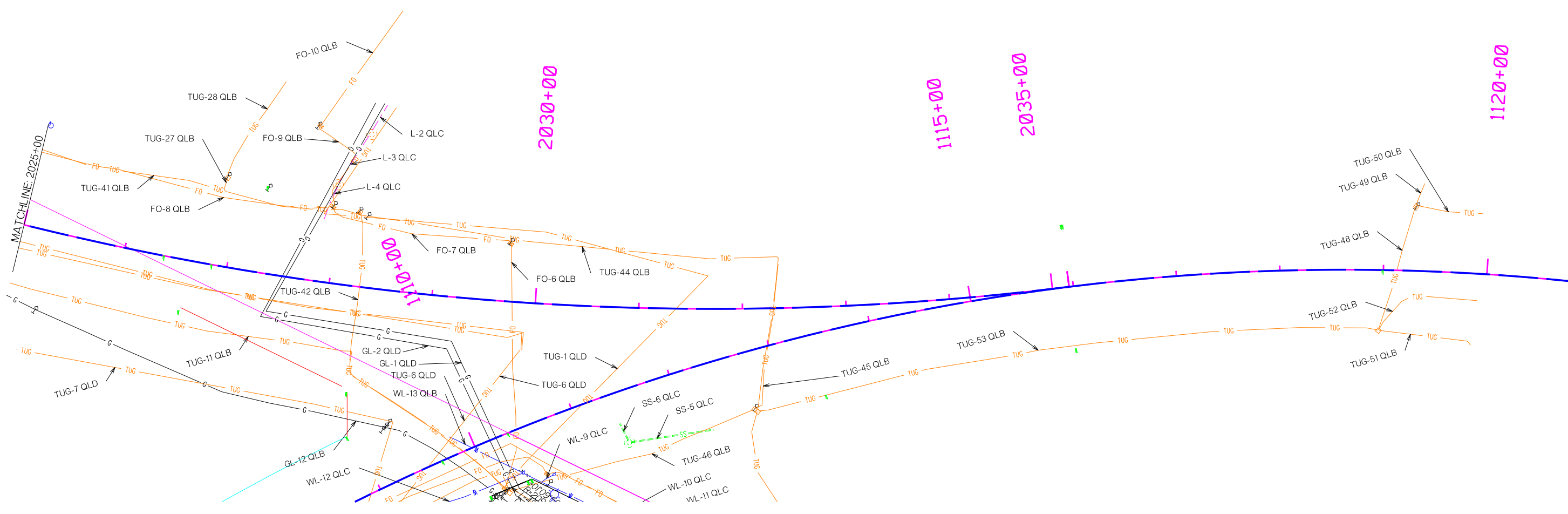
SCALE 0 100 200 300 400 500 Feet

PLS	
DRAWN	
CHECKED	
APPROVED	
CREW	

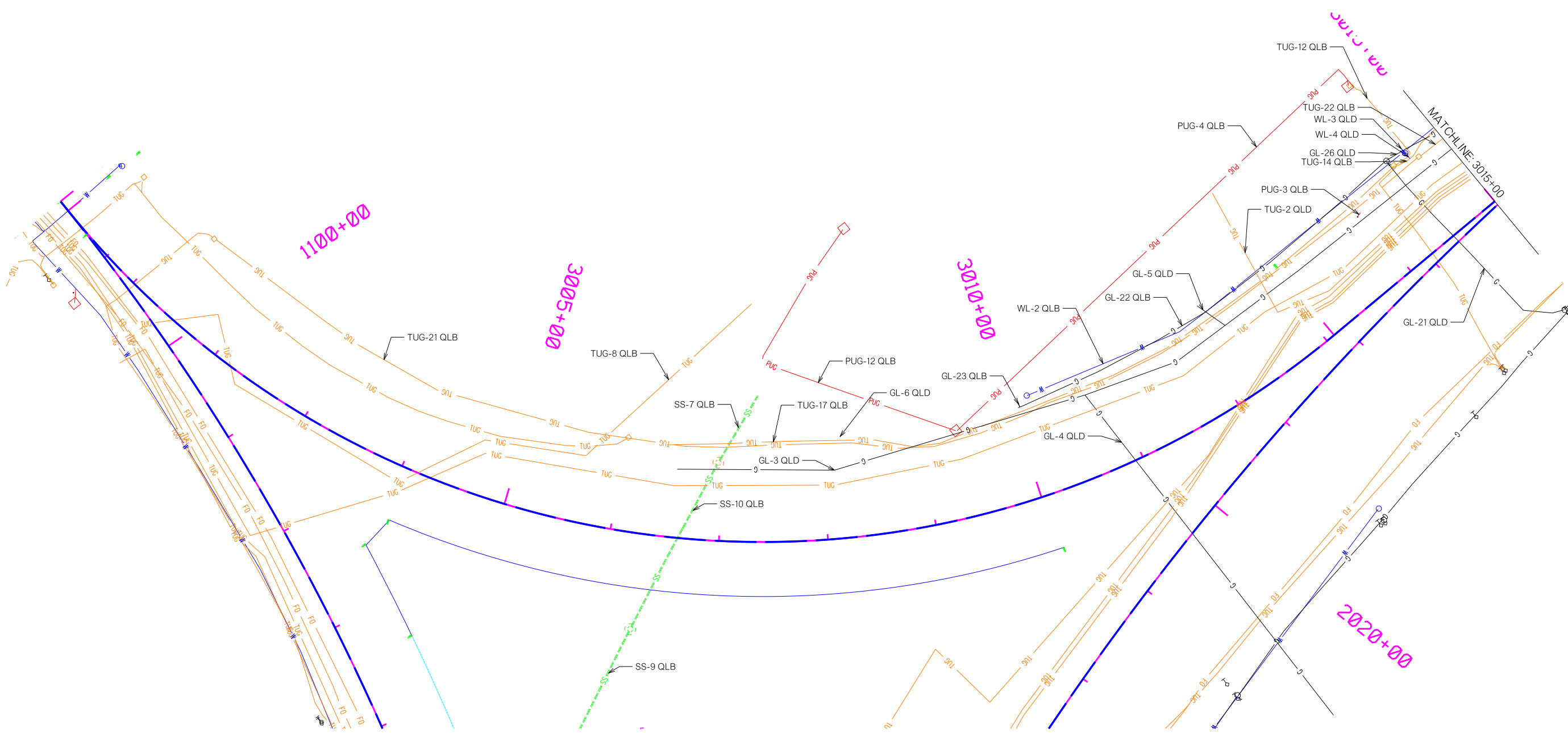
OKLAHOMA DEPARTMENT OF TRANSPORTATION SURVEY DIVISION

### SURVEY DATA SHEET

SWO\_5656(1)



SCALE		OKLAHOMA DEPARTMENT OF TRANSPORTATION SURVEY DIVISION	
PLS		<b>SURVEY DATA SHEET</b> SWO_5656(1)	
DRAWN			
CHECKED			
APPROVED			
CREW			
COUNTY	JOHNSTON	HIGHWAY	SH-22
STATE JOB NO.	J/P 36178(04)	SHEET NO.	6



שטח נישן

1100+00

3005+00

3010+00

2020+00

MATCHLINE: 3015+00

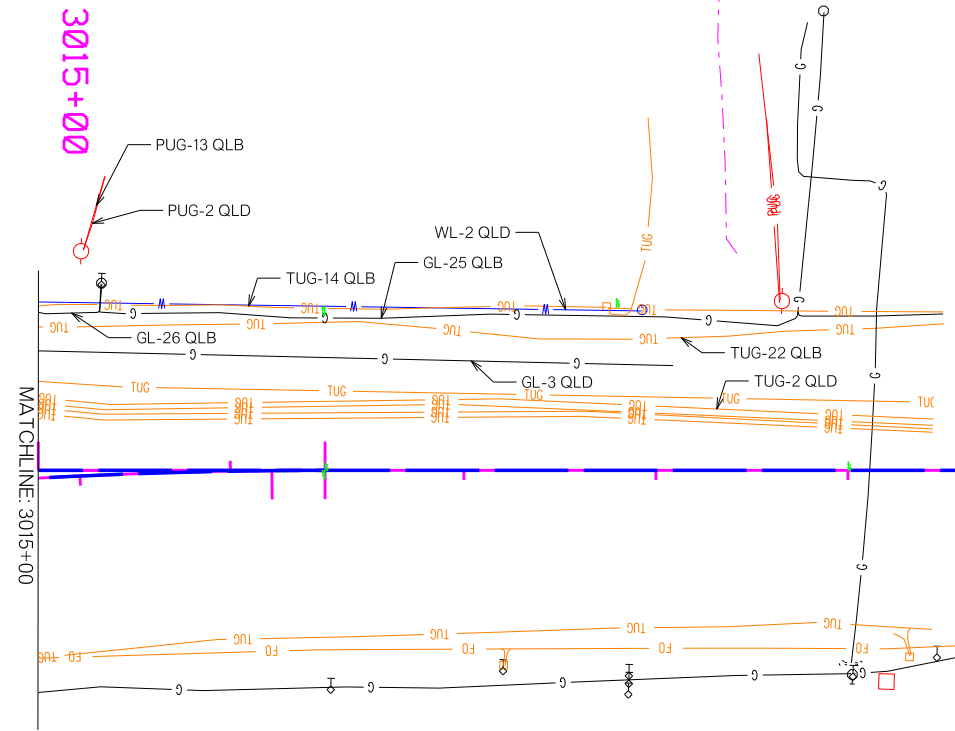


OKLAHOMA DEPARTMENT OF TRANSPORTATION SURVEY DIVISION	
<b>SURVEY DATA SHEET</b>	
SWO_5656(1)	
COUNTY	JOHNSTON
HIGHWAY	SH-377
STATE JOB NO.	J/P 36178(04)
SHEET NO.	7

PLS	
DRAWN	
CHECKED	
APPROVED	
CREW	

3015+00

MATCHLINE: 3015+00



2015+00

2010+00

2005+00

SCALE 0 100 200 300 400 500 Feet

PLS		
DRAWN		
CHECKED		
APPROVED		
CREW		

OKLAHOMA DEPARTMENT OF TRANSPORTATION SURVEY DIVISION

### SURVEY DATA SHEET

SWO\_5656(1)



UTILITY TYPE	UTILITY COMPANY	DOC	EQUIPMENT	FREQUENCY	SUE LEVEL	DATE	STATION	OFFSET	LINE	SHEET NUMBER
WATER	CITY OF TISHIMINGO	6	GPS/SUBSITE UTILIGUARD PLUS	44.6	LEVEL B	10/5/2023	1093+22.26	RT 51.228'	WL-5	SHEET 3
TELEPHONE	AT&T	3	GPS/SUBSITE UTILIGUARD PLUS	29.4	LEVEL B	10/5/2023	1093+27.32	RT 48.250'	TUG-16	SHEET 3
GAS	ONG	3	GPS/SUBSITE UTILIGUARD PLUS	29.4	LEVEL B	10/5/2023	1093+29.11	RT 57.092'	GL-7	SHEET 3
GAS	ONG	3	GPS/SUBSITE UTILIGUARD PLUS	29.4	LEVEL B	10/5/2023	1093+38.76	RT 51.123'	GL-7	SHEET 3
GAS	ONG	3	GPS/SUBSITE UTILIGUARD PLUS	29.4	LEVEL B	10/5/2023	1093+39.57	RT 57.407'	GL-8	SHEET 3
FIBER OPTIC	TRACE	3	GPS/SUBSITE UTILIGUARD PLUS	44.6	LEVEL B	10/5/2023	1093+71.09	RT 36.523'	FO-5	SHEET 3
TELEPHONE	AT&T	N/A	LEVEL D	N/A	LEVEL D	10/9/2023	1094+09.91	RT 58.027'	TUG-4	SHEET 3
FIBER OPTIC	TRACE/FIBER	N/A	LEVEL D	N/A	LEVEL D	10/9/2023	1094+10.93	RT 42.631'	FO-1	SHEET 3
TELEPHONE	AT&T	2	GPS/SUBSITE UTILIGUARD PLUS	29.4	LEVEL B	10/5/2023	1094+12.30	RT 50.342'	TUG-25	SHEET 3
TELEPHONE	AT&T	N/A	LEVEL D	N/A	LEVEL D	10/9/2023	1094+12.66	RT 51.602'	TUG-5	SHEET 3
TELEPHONE	AT&T	2	GPS/SUBSITE UTILIGUARD PLUS	29.4	LEVEL B	10/5/2023	1094+13.46	RT 63.335'	TUG-25	SHEET 3
TELEPHONE	AT&T	2	GPS/SUBSITE UTILIGUARD PLUS	29.4	LEVEL B	10/5/2023	1094+14.11	RT 63.361'	TUG-26	SHEET 3
TELEPHONE	AT&T	2	GPS/SUBSITE UTILIGUARD PLUS	29.4	LEVEL B	10/5/2023	1094+15.01	RT 50.261'	TUG-26	SHEET 3
GAS	ONG	5	GPS/SUBSITE UTILIGUARD PLUS	29.4	LEVEL B	10/5/2023	1095+61.53	RT 84.066'	GL-8	SHEET 3
WATER	CITY OF TISHIMINGO	6	GPS/SUBSITE UTILIGUARD PLUS	44.6	LEVEL B	10/5/2023	1095+67.45	RT 66.748'	WL-5	SHEET 3
WATER	CITY OF TISHIMINGO	6	GPS/SUBSITE UTILIGUARD PLUS	44.6	LEVEL B	10/5/2023	1095+94.93	RT 51.602'	WL-6	SHEET 3
FIBER OPTIC	TRACE	3	GPS/SUBSITE UTILIGUARD PLUS	44.6	LEVEL B	10/5/2023	1095+89.98	RT 63.795'	FO-4	SHEET 3
FIBER OPTIC	TRACE	3	GPS/SUBSITE UTILIGUARD PLUS	44.6	LEVEL B	10/5/2023	1095+94.92	RT 42.096'	FO-5	SHEET 3
FIBER OPTIC	TRACE	3	GPS/SUBSITE UTILIGUARD PLUS	44.6	LEVEL B	10/5/2023	1095+94.93	RT 43.347'	FO-4	SHEET 3
TELEPHONE	AT&T	3	GPS/SUBSITE UTILIGUARD PLUS	29.4	LEVEL B	10/5/2023	1095+96.77	RT 52.135'	TUG-16	SHEET 3
TELEPHONE	AT&T	3	GPS/SUBSITE UTILIGUARD PLUS	29.4	LEVEL B	10/5/2023	1095+97.32	RT 51.986'	TUG-15	SHEET 3
FIBER OPTIC	TRACE	3	GPS/SUBSITE UTILIGUARD PLUS	44.6	LEVEL B	10/5/2023	1095+99.17	RT 41.212'	FO-3	SHEET 3
WATER	CITY OF TISHIMINGO	6	GPS/SUBSITE UTILIGUARD PLUS	44.6	LEVEL B	10/5/2023	1098+42.77	LT 63.063'	WL-6	SHEET 3
WATER	CITY OF TISHOMINGO	5.5	GPS/SUBSITE UTILIGUARD PLUS	44.6	LEVEL B	10/6/2023	1098+46.68	RT 28.490'	WL-7	SHEET 3
TELEPHONE	AT&T	3	GPS/SUBSITE UTILIGUARD PLUS	29.4	LEVEL B	10/5/2023	1098+63.36	LT 62.492'	TUG-18	SHEET 3
TELEPHONE	AT&T	2	GPS/SUBSITE UTILIGUARD PLUS	29.4	LEVEL B	10/5/2023	1098+65.10	RT 87.570'	TUG-23	SHEET 3
TELEPHONE	AT&T	2	GPS/SUBSITE UTILIGUARD PLUS	29.4	LEVEL B	10/5/2023	1098+65.18	RT 43.591'	TUG-24	SHEET 3
TELEPHONE	AT&T	3	GPS/SUBSITE UTILIGUARD PLUS	29.4	LEVEL B	10/5/2023	1098+65.47	LT 68.942'	TUG-18	SHEET 3
TELEPHONE	AT&T	3	GPS/SUBSITE UTILIGUARD PLUS	29.4	LEVEL B	10/5/2023	1098+66.67	LT 69.691'	TUG-19	SHEET 3
TELEPHONE	AT&T	3	GPS/SUBSITE UTILIGUARD PLUS	29.4	LEVEL B	10/5/2023	1098+73.95	LT 63.286'	TUG-19	SHEET 3
TELEPHONE	AT&T	2	GPS/SUBSITE UTILIGUARD PLUS	29.4	LEVEL B	10/5/2023	1098+90.63	RT 52.452'	TUG-23	SHEET 3
TELEPHONE	AT&T	2	GPS/SUBSITE UTILIGUARD PLUS	29.4	LEVEL B	10/5/2023	1098+91.06	RT 52.031'	TUG-24	SHEET 3
POWER	OG&E	2	GPS/SUBSITE UTILIGUARD PLUS	29.4	LEVEL B	10/5/2023	1099+06.54	RT 38.261'	PUG-5	SHEET 3
POWER	OG&E	2	GPS/SUBSITE UTILIGUARD PLUS	29.4	LEVEL B	10/5/2023	1099+16.96	RT 47.126'	PUG-5	SHEET 3
TELEPHONE	AT&T	6	GPS/SUBSITE UTILIGUARD PLUS	29.4	LEVEL B	10/5/2023	1099+43.09	LT 90.605'	TUG-20	SHEET 3
TELEPHONE	AT&T	N/A	LEVEL D	N/A	LEVEL D	10/9/2023	1099+87.16	RT 45.862'	TUG-3	SHEET 3
TELEPHONE	AT&T	2	GPS/SUBSITE UTILIGUARD PLUS	29.4	LEVEL B	10/5/2023	1102+69.38	LT 316.918'	TUG-15	SHEET 3
TELEPHONE	AT&T	N/A	LEVEL D	N/A	LEVEL D	10/9/2023	1102+91.20	LT 1,571.293'	TUG-3	SHEET 3
TELEPHONE	AT&T	N/A	LEVEL D	N/A	LEVEL D	10/9/2023	1102+98.00	LT 1,573.675'	TUG-7	SHEET 3
WATER	CITY OF TISHOMINGO	5.5	GPS/SUBSITE UTILIGUARD PLUS	44.6	LEVEL B	10/6/2023	1104+01.24	RT 49.506'	WL-7	SHEET 3
WATER	CITY OF TISHOMINGO	5.5	GPS/SUBSITE UTILIGUARD PLUS	44.6	LEVEL B	10/6/2023	1104+01.30	RT 49.464'	WL-8	SHEET 3
SANITARY SEWER	CITY OF TISHAMINGO	4	GPS/SUBSITE UTILIGUARD PLUS	29.4	LEVEL B	10/5/2023	1106+22.21	RT 47.335'	SS-4	SHEET 4
SANITARY SEWER	CITY OF TISHAMINGO	6	GPS/SUBSITE UTILIGUARD PLUS	29.4	LEVEL B	10/5/2023	1106+43.79	RT 21.401'	SS-3	SHEET 4
TELEPHONE	AT&T	2.8	GPS/SUBSITE UTILIGUARD PLUS	29.4	LEVEL B	10/5/2023	1106+45.20	LT 409.363'	TUG-11	SHEET 4
POWER	OG&E	3	GPS/SUBSITE UTILIGUARD PLUS	29.4	LEVEL B	10/6/2023	1106+55.97	RT 114.652'	PUG-11	SHEET 4
SANITARY SEWER	CITY OF TISHAMINGO	4	GPS/SUBSITE UTILIGUARD PLUS	29.4	LEVEL B	10/5/2023	1106+59.45	RT 59.635'	SS-4	SHEET 4
SANITARY SEWER	CITY OF TISHAMINGO	6	GPS/SUBSITE UTILIGUARD PLUS	29.4	LEVEL B	10/5/2023	1106+60.44	RT 58.836'	SS-3	SHEET 4
SANITARY SEWER	CITY OF TISHAMINGO	6	GPS/SUBSITE UTILIGUARD PLUS	29.4	LEVEL B	10/5/2023	1106+64.75	RT 60.871'	SS-2	SHEET 4
GAS	ONG	4	GPS/SUBSITE UTILIGUARD PLUS	44.6	LEVEL B	10/5/2023	1106+70.42	LT 371.767'	GL-12	SHEET 4
POWER	OG&E	3	GPS/SUBSITE UTILIGUARD PLUS	29.4	LEVEL B	10/6/2023	1106+81.24	RT 185.567'	PUG-11	SHEET 4
POWER	OG&E	3	GPS/SUBSITE UTILIGUARD PLUS	29.4	LEVEL B	10/6/2023	1106+82.44	RT 187.557'	PUG-8	SHEET 4
POWER	OG&E	3	GPS/SUBSITE UTILIGUARD PLUS	29.4	LEVEL B	10/6/2023	1107+69.53	RT 207.692'	PUG-9	SHEET 4
TELEPHONE	AT&T	N/A	LEVEL D	N/A	LEVEL D	10/9/2023	1108+03.50	RT 81.602'	TUG-5	SHEET 4
TELEPHONE	AT&T	N/A	LEVEL D	N/A	LEVEL D	10/9/2023	1108+10.98	RT 80.635'	TUG-7	SHEET 4
POWER	OG&E	3	GPS/SUBSITE UTILIGUARD PLUS	29.4	LEVEL B	10/6/2023	1108+20.25	RT 261.633'	PUG-8	SHEET 4
POWER	OG&E	3	GPS/SUBSITE UTILIGUARD PLUS	29.4	LEVEL B	10/6/2023	1108+21.15	RT 261.086'	PUG-9	SHEET 4
POWER	OG&E	3	GPS/SUBSITE UTILIGUARD PLUS	29.4	LEVEL B	10/6/2023	1108+23.35	RT 260.955'	PUG-10	SHEET 4
POWER	OG&E	3	GPS/SUBSITE UTILIGUARD PLUS	29.4	LEVEL B	10/6/2023	1109+19.89	RT 161.824'	PUG-7	SHEET 4

UTILITY TYPE	UTILITY COMPANY	DOC	EQUIPMENT	FREQUENCY	SUE LEVEL	DATE	STATION	OFFSET	LINE	SHEET NUMBER
POWER	OG&E	3	GPS/SUBSITE UTILIGUARD PLUS	29.4	LEVEL B	10/6/2023	1109+33.25	RT 208.937'	PUG-7	SHEET 4
GAS	ONG	1	GPS/SUBSITE UTILIGUARD PLUS	44.6	LEVEL B	10/5/2023	1109+33.65	RT 95.330'	GL-27	SHEET 4
POWER	OG&E	3	GPS/SUBSITE UTILIGUARD PLUS	29.4	LEVEL B	10/6/2023	1109+34.30	RT 210.357'	PUG-10	SHEET 4
WATER	CITY OF TISHOMINGO	N/A	GPS/SUBSITE UTILIGUARD PLUS	N/A	LEVEL C	10/6/2023	1109+40.43	RT 36.762'	WL-12	SHEET 4
WATER	CITY OF TISHOMINGO	5.5	GPS/SUBSITE UTILIGUARD PLUS	44.6	LEVEL B	10/6/2023	1109+40.44	RT 36.802'	WL-8	SHEET 4
POWER	OG&E	1	GPS/SUBSITE UTILIGUARD PLUS	44.6	LEVEL B	10/6/2023	1109+47.70	RT 60.350'	PUG-14	SHEET 4
SANITARY SEWER	CITY OF TISHAMINGO	6	GPS/SUBSITE UTILIGUARD PLUS	29.4	LEVEL B	10/5/2023	1109+47.92	RT 58.480'	SS-2	SHEET 4
SANITARY SEWER	CITY OF TISHAMINGO	6	GPS/SUBSITE UTILIGUARD PLUS	29.4	LEVEL B	10/5/2023	1109+53.22	RT 61.975'	SS-1	SHEET 4
POWER	OG&E	1	GPS/SUBSITE UTILIGUARD PLUS	44.6	LEVEL B	10/6/2023	1109+54.97	RT 61.353'	PUG-14	SHEET 4
FIBER OPTIC	AT&T	3	GPS/SUBSITE UTILIGUARD PLUS	44.6	LEVEL B	10/5/2023	1109+87.15	LT 343.789'	FO-10	SHEET 4
GAS	ONG	4	GPS/SUBSITE UTILIGUARD PLUS	44.6	LEVEL B	10/5/2023	1110+02.86	RT 52.635'	GL-12	SHEET 4
GAS	ONG	4	GPS/SUBSITE UTILIGUARD PLUS	44.6	LEVEL B	10/5/2023	1110+03.33	RT 53.617'	GL-10	SHEET 4
TELEPHONE	AT&T	4.5	GPS/SUBSITE UTILIGUARD PLUS	29.4	LEVEL B	10/5/2023	1110+10.12	RT 47.616'	TUG-11	SHEET 4
TELEPHONE	AT&T	2.5	GPS/SUBSITE UTILIGUARD PLUS	29.4	LEVEL B	10/5/2023	1110+14.19	RT 52.396'	TUG-20	SHEET 4
TELEPHONE	AT&T	3	GPS/SUBSITE UTILIGUARD PLUS	44.6	LEVEL B	10/5/2023	1110+14.64	RT 52.673'	TUG-43	SHEET 4
GAS	ONG	1	GPS/SUBSITE UTILIGUARD PLUS	44.6	LEVEL B	10/5/2023	1110+14.79	RT 73.753'	GL-27	SHEET 4
TELEPHONE	AT&T	3	GPS/SUBSITE UTILIGUARD PLUS	44.6	LEVEL B	10/5/2023	1110+14.99	RT 53.166'	TUG-46	SHEET 4
GAS	ONG	4	GPS/SUBSITE UTILIGUARD PLUS	44.6	LEVEL B	10/5/2023	1110+15.62	RT 73.392'	GL-10	SHEET 4
GAS	ONG	4	GPS/SUBSITE UTILIGUARD PLUS	44.6	LEVEL B	10/5/2023	1110+16.25	RT 74.908'	GL-11	SHEET 4
SANITARY SEWER	CITY OF TISHAMINGO	6	GPS/SUBSITE UTILIGUARD PLUS	29.4	LEVEL B	10/5/2023	1110+16.89	RT 169.886'	SS-1	SHEET 4
SANITARY SEWER	CITY OF TISHAMINGO	N/A	GPS/SUBSITE UTILIGUARD PLUS	N/A	LEVEL C	10/6/2023	1110+17.01	RT 170.026'	SS-8	SHEET 4
WATER	CITY OF TISHOMINGO	N/A	GPS/SUBSITE UTILIGUARD PLUS	N/A	LEVEL C	10/6/2023	1110+33.38	RT 41.361'	WL-12	SHEET 4
WATER	CITY OF TISHOMINGO	N/A	GPS/SUBSITE UTILIGUARD PLUS	N/A	LEVEL C	10/6/2023	1110+34.09	RT 41.955'	WL-10	SHEET 4
SANITARY SEWER	CITY OF TISHAMINGO	N/A	GPS/SUBSITE UTILIGUARD PLUS	N/A	LEVEL C	10/6/2023	1110+38.93	RT 200.111'	SS-8	SHEET 4
WATER	CITY OF TISHOMINGO	N/A	GPS/SUBSITE UTILIGUARD PLUS	N/A	LEVEL C	10/6/2023	1110+46.99	RT 56.074'	WL-9	SHEET 4
FIBER OPTIC	TRACE	3	GPS/SUBSITE UTILIGUARD PLUS	44.6	LEVEL B	10/5/2023	1110+54.65	RT 49.437'	FO-3	SHEET 4
TELEPHONE	AT&T	N/A	LEVEL D	N/A	LEVEL D	10/9/2023	1110+56.70	RT 160.820'	TUG-4	SHEET 4
FIBER OPTIC	TRACE	3	GPS/SUBSITE UTILIGUARD PLUS	44.6	LEVEL B	10/5/2023	1110+58.85	RT 51.506'	FO-2	SHEET 4
WATER	CITY OF TISHOMINGO	N/A	GPS/SUBSITE UTILIGUARD PLUS	N/A	LEVEL C	10/6/2023	1110+60.97	RT 53.959'	WL-9	SHEET 4
FIBER OPTIC	AT&T	3	GPS/SUBSITE UTILIGUARD PLUS	44.6	LEVEL B	10/5/2023	1110+84.22	LT 416.079'	FO-10	SHEET 4
GAS	ONG	4	GPS/SUBSITE UTILIGUARD PLUS	44.6	LEVEL B	10/5/2023	1111+04.95	RT 211.637'	GL-11	SHEET 4
TELEPHONE	AT&T	3	GPS/SUBSITE UTILIGUARD PLUS	44.6	LEVEL B	10/5/2023	1111+13.06	RT 205.384'	TUG-43	SHEET 4
WATER	CITY OF TISHOMINGO	N/A	GPS/SUBSITE UTILIGUARD PLUS	N/A	LEVEL C	10/6/2023	1111+37.98	RT 139.510'	WL-10	SHEET 4
WATER	CITY OF TISHOMINGO	N/A	GPS/SUBSITE UTILIGUARD PLUS	N/A	LEVEL C	10/6/2023	1111+38.42	RT 156.290'	WL-11	SHEET 4
SANITARY SEWER	CITY OF TISHAMINGO	N/A	GPS/SUBSITE UTILIGUARD PLUS	N/A	LEVEL C	10/5/2023	1111+39.60	RT 29.622'	SS-6	SHEET 4
SANITARY SEWER	CITY OF TISHAMINGO	N/A	GPS/SUBSITE UTILIGUARD PLUS	N/A	LEVEL C	10/5/2023	1111+42.11	RT 48.318'	SS-5	SHEET 4
SANITARY SEWER	CITY OF TISHAMINGO	N/A	GPS/SUBSITE UTILIGUARD PLUS	N/A	LEVEL C	10/5/2023	1111+43.90	RT 49.964'	SS-5	SHEET 4
WATER	CITY OF TISHOMINGO	N/A	GPS/SUBSITE UTILIGUARD PLUS	N/A	LEVEL C	10/6/2023	1111+70.02	RT 167.553'	WL-11	SHEET 4
FIBER OPTIC	TRACE/FIBER	N/A	LEVEL D	N/A	LEVEL D	10/9/2023	1112+02.24	RT 194.457'	FO-1	SHEET 4
SANITARY SEWER	CITY OF TISHAMINGO	N/A	GPS/SUBSITE UTILIGUARD PLUS	N/A	LEVEL C	10/5/2023	1112+26.10	RT 63.488'	SS-6	SHEET 4
FIBER OPTIC	TRACE	3	GPS/SUBSITE UTILIGUARD PLUS	44.6	LEVEL B	10/5/2023	1112+36.54	RT 217.451'	FO-2	SHEET 4
TELEPHONE	AT&T	3	GPS/SUBSITE UTILIGUARD PLUS	44.6	LEVEL B	10/5/2023	1112+70.12	RT 55.651'	TUG-46	SHEET 4
TELEPHONE	AT&T	3	GPS/SUBSITE UTILIGUARD PLUS	44.6	LEVEL B	10/5/2023	1112+70.52	RT 55.248'	TUG-45	SHEET 4
TELEPHONE	AT&T	4	GPS/SUBSITE UTILIGUARD PLUS	44.6	LEVEL B	10/5/2023	1112+72.25	RT 58.486'	TUG-47	SHEET 4
TELEPHONE	AT&T	3	GPS/SUBSITE UTILIGUARD PLUS	44.6	LEVEL B	10/5/2023	1112+73.40	RT 58.312'	TUG-53	SHEET 4
TELEPHONE	AT&T	4	GPS/SUBSITE UTILIGUARD PLUS	44.6	LEVEL B	10/5/2023	1112+81.62	RT 191.243'	TUG-47	SHEET 4
TELEPHONE	AT&T	3	GPS/SUBSITE UTILIGUARD PLUS	44.6	LEVEL B	10/5/2023	1113+28.			



UTILITY TYPE	UTILITY COMPANY	DOC	EQUIPMENT	FREQUENCY	SUE LEVEL	DATE	STATION	OFFSET	LINE	SHEET NUMBER
TELEPHONE	AT&T	4	GPS/SUBSITE UTILIGUARD PLUS	29.4	LEVEL B	10/5/2023	3001+29.71	LT 81.094'	TUG-21	SHEET 7
SANITARY SEWER	CITY OF TISHOMINGO	N/A	GPS/SUBSITE UTILIGUARD PLUS	N/A	LEVEL C	10/6/2023	3005+53.20	RT 435.685'	SS-9	SHEET 7
SANITARY SEWER	CITY OF TISHOMINGO	N/A	GPS/SUBSITE UTILIGUARD PLUS	N/A	LEVEL C	10/6/2023	3006+29.50	RT 89.879'	SS-9	SHEET 7
SANITARY SEWER	CITY OF TISHOMINGO	N/A	GPS/SUBSITE UTILIGUARD PLUS	N/A	LEVEL C	10/6/2023	3006+30.73	RT 86.075'	SS-10	SHEET 7
TELEPHONE	AT&T	3	GPS/SUBSITE UTILIGUARD PLUS	29.4	LEVEL B	10/5/2023	3006+42.14	LT 83.750'	TUG-17	SHEET 7
GAS	ONG	N/A	LEVEL D	N/A	LEVEL D	10/9/2023	3006+55.22	LT 62.711'	GL-3	SHEET 7
SANITARY SEWER	CITY OF TISHOMINGO	N/A	GPS/SUBSITE UTILIGUARD PLUS	N/A	LEVEL C	10/6/2023	3006+94.43	LT 69.838'	SS-10	SHEET 7
SANITARY SEWER	CITY OF TISHOMINGO	N/A	GPS/SUBSITE UTILIGUARD PLUS	N/A	LEVEL C	10/6/2023	3006+96.64	LT 73.470'	SS-7	SHEET 7
TELEPHONE	AT&T	N/A	LEVEL D	N/A	LEVEL D	10/9/2023	3007+26.32	LT 218.174'	TUG-8	SHEET 7
SANITARY SEWER	CITY OF TISHOMINGO	N/A	GPS/SUBSITE UTILIGUARD PLUS	N/A	LEVEL C	10/6/2023	3007+34.76	LT 133.969'	SS-7	SHEET 7
GAS	ONG	N/A	LEVEL D	N/A	LEVEL D	10/9/2023	3008+20.26	LT 93.121'	GL-6	SHEET 7
GAS	ONG	N/A	LEVEL D	N/A	LEVEL D	10/9/2023	3008+24.89	LT 64.582'	GL-6	SHEET 7
POWER	OG&E	4	GPS/SUBSITE UTILIGUARD PLUS	29.4	LEVEL B	10/6/2023	3008+52.57	LT 281.175'	PUG-12	SHEET 7
POWER	OG&E	4	GPS/SUBSITE UTILIGUARD PLUS	29.4	LEVEL B	10/6/2023	3009+38.08	LT 80.501'	PUG-12	SHEET 7
POWER	OG&E	0	GPS/SUBSITE UTILIGUARD PLUS	29.4	LEVEL B	10/5/2023	3009+39.63	LT 80.201'	PUG-4	SHEET 7
GAS	ONG	4	GPS/SUBSITE UTILIGUARD PLUS	44.6	LEVEL B	10/5/2023	3010+05.95	LT 84.513'	GL-23	SHEET 7
GAS	ONG	4	GPS/SUBSITE UTILIGUARD PLUS	44.6	LEVEL B	10/5/2023	3010+07.19	LT 89.767'	GL-23	SHEET 7
GAS	ONG	4	GPS/SUBSITE UTILIGUARD PLUS	44.6	LEVEL B	10/5/2023	3010+07.79	LT 89.981'	GL-22	SHEET 7
WATER	CITY OF TISHOMINGO	N/A	LEVEL C	N/A	LEVEL C	10/9/2023	3010+18.58	LT 92.494'	WL-2	SHEET 7
GAS	ONG	N/A	LEVEL D	N/A	LEVEL D	10/9/2023	3010+73.84	LT 73.645'	GL-4	SHEET 7
GAS	ONG	N/A	LEVEL D	N/A	LEVEL D	10/9/2023	3011+42.36	RT 290.020'	GL-4	SHEET 7
GAS	ONG	N/A	LEVEL D	N/A	LEVEL D	10/9/2023	3012+18.36	LT 96.594'	GL-5	SHEET 7
GAS	ONG	N/A	LEVEL D	N/A	LEVEL D	10/9/2023	3012+30.86	LT 67.405'	GL-5	SHEET 7
TELEPHONE	AT&T	N/A	LEVEL D	N/A	LEVEL D	10/9/2023	3013+05.42	LT 171.415'	TUG-2	SHEET 7
POWER	OG&E	1.1	GPS/SUBSITE UTILIGUARD PLUS	29.4	LEVEL B	10/5/2023	3013+94.75	LT 69.736'	PUG-3	SHEET 7
POWER	OG&E	1.1	GPS/SUBSITE UTILIGUARD PLUS	29.4	LEVEL B	10/5/2023	3013+98.92	LT 70.907'	PUG-3	SHEET 7
GAS	ONG	4	GPS/SUBSITE UTILIGUARD PLUS	44.6	LEVEL B	10/5/2023	3014+47.06	LT 92.382'	GL-21	SHEET 7
GAS	ONG	4	GPS/SUBSITE UTILIGUARD PLUS	44.6	LEVEL B	10/5/2023	3014+47.27	LT 92.448'	GL-22	SHEET 7
GAS	ONG	3	GPS/SUBSITE UTILIGUARD PLUS	44.6	LEVEL B	10/5/2023	3014+47.67	LT 92.435'	GL-26	SHEET 7
TELEPHONE	AT&T	3	GPS/SUBSITE UTILIGUARD PLUS	29.4	LEVEL B	10/5/2023	3014+50.33	LT 83.856'	TUG-17	SHEET 7
TELEPHONE	AT&T	3.5	GPS/SUBSITE UTILIGUARD PLUS	29.4	LEVEL B	10/5/2023	3014+51.71	LT 83.260'	TUG-14	SHEET 7
TELEPHONE	AT&T	2	GPS/SUBSITE UTILIGUARD PLUS	29.4	LEVEL B	10/5/2023	3014+52.03	LT 83.680'	TUG-12	SHEET 7
POWER	OG&E	5	GPS/SUBSITE UTILIGUARD PLUS	29.4	LEVEL B	10/5/2023	3014+64.91	LT 167.387'	PUG-4	SHEET 7
WATER	CITY OF TISHAMINGO	1.8	GPS/SUBSITE UTILIGUARD PLUS	29.4	LEVEL B	10/5/2023	3014+65.08	LT 95.377'	WL-3	SHEET 7
WATER	CITY OF TISHAMINGO	1.8	GPS/SUBSITE UTILIGUARD PLUS	29.4	LEVEL B	10/5/2023	3014+65.15	LT 88.051'	WL-3	SHEET 7
WATER	CITY OF TISHAMINGO	3.5	GPS/SUBSITE UTILIGUARD PLUS	29.4	LEVEL B	10/5/2023	3014+65.40	LT 79.363'	WL-4	SHEET 7
WATER	CITY OF TISHAMINGO	3.5	GPS/SUBSITE UTILIGUARD PLUS	29.4	LEVEL B	10/5/2023	3014+65.47	LT 84.231'	WL-4	SHEET 7
TELEPHONE	AT&T	2	GPS/SUBSITE UTILIGUARD PLUS	29.4	LEVEL B	10/5/2023	3014+66.70	LT 166.385'	TUG-12	SHEET 7
TELEPHONE	AT&T	6	GPS/SUBSITE UTILIGUARD PLUS	29.4	LEVEL B	10/5/2023	3014+71.47	LT 76.030'	TUG-21	SHEET 7
TELEPHONE	AT&T	6	GPS/SUBSITE UTILIGUARD PLUS	29.4	LEVEL B	10/5/2023	3014+74.61	LT 75.462'	TUG-22	SHEET 7
GAS	ONG	4	GPS/SUBSITE UTILIGUARD PLUS	44.6	LEVEL B	10/5/2023	3014+85.12	RT 116.995'	GL-21	SHEET 7
POWER	OG&E	6	GPS/SUBSITE UTILIGUARD PLUS	44.6	LEVEL B	10/6/2023	3015+23.40	LT 114.664'	PUG-13	SHEET 8
POWER	OG&E	N/A	LEVEL D	N/A	LEVEL D	10/9/2023	3015+23.53	LT 114.753'	PUG-2	SHEET 8
GAS	ONG	3	GPS/SUBSITE UTILIGUARD PLUS	44.6	LEVEL B	10/5/2023	3015+32.64	LT 97.012'	GL-26	SHEET 8
GAS	ONG	3	GPS/SUBSITE UTILIGUARD PLUS	44.6	LEVEL B	10/5/2023	3015+33.11	LT 97.151'	GL-25	SHEET 8
POWER	OG&E	N/A	LEVEL D	N/A	LEVEL D	10/9/2023	3015+36.84	LT 160.894'	PUG-2	SHEET 8
POWER	OG&E	6	GPS/SUBSITE UTILIGUARD PLUS	44.6	LEVEL B	10/6/2023	3015+36.89	LT 161.174'	PUG-13	SHEET 8
GAS	ONG	N/A	LEVEL D	N/A	LEVEL D	10/9/2023	Out of range	Out of range	GL-3	SHEET 8
GAS	ONG	3	GPS/SUBSITE UTILIGUARD PLUS	44.6	LEVEL B	10/5/2023	Out of range	Out of range	GL-25	SHEET 8
TELEPHONE	AT&T	N/A	LEVEL D	N/A	LEVEL D	10/9/2023	Out of range	Out of range	TUG-2	SHEET 8
TELEPHONE	AT&T	N/A	LEVEL D	N/A	LEVEL D	10/9/2023	Out of range	Out of range	TUG-8	SHEET 8
TELEPHONE	AT&T	3	GPS/SUBSITE UTILIGUARD PLUS	29.4	LEVEL B	10/5/2023	Out of range	Out of range	TUG-14	SHEET 8
TELEPHONE	AT&T	6	GPS/SUBSITE UTILIGUARD PLUS	29.4	LEVEL B	10/5/2023	Out of range	Out of range	TUG-22	SHEET 8
WATER	CITY OF TISHOMINGO	N/A	LEVEL C	N/A	LEVEL C	10/9/2023	Out of range	Out of range	WL-2	SHEET 8

PLS				OKLAHOMA DEPARTMENT OF TRANSPORTATION SURVEY DIVISION
DRAWN				
CHECKED				
APPROVED				
CREW				
COUNTY	JOHNSTON	HIGHWAY	SH-377	STATE JOB NO. J/P 36178(04) SHEET NO. 11

## SURVEY DATA SHEET

SWO\_5656(1)