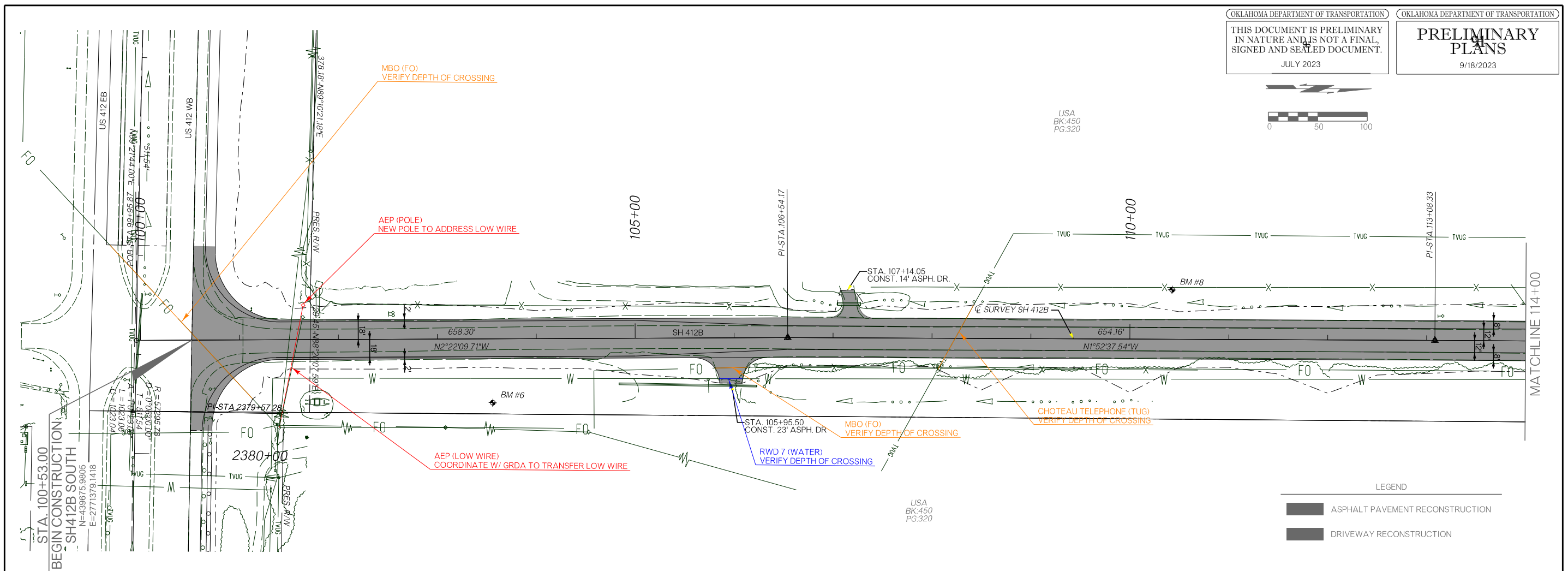


\$\$\$DATE\$\$\$\$

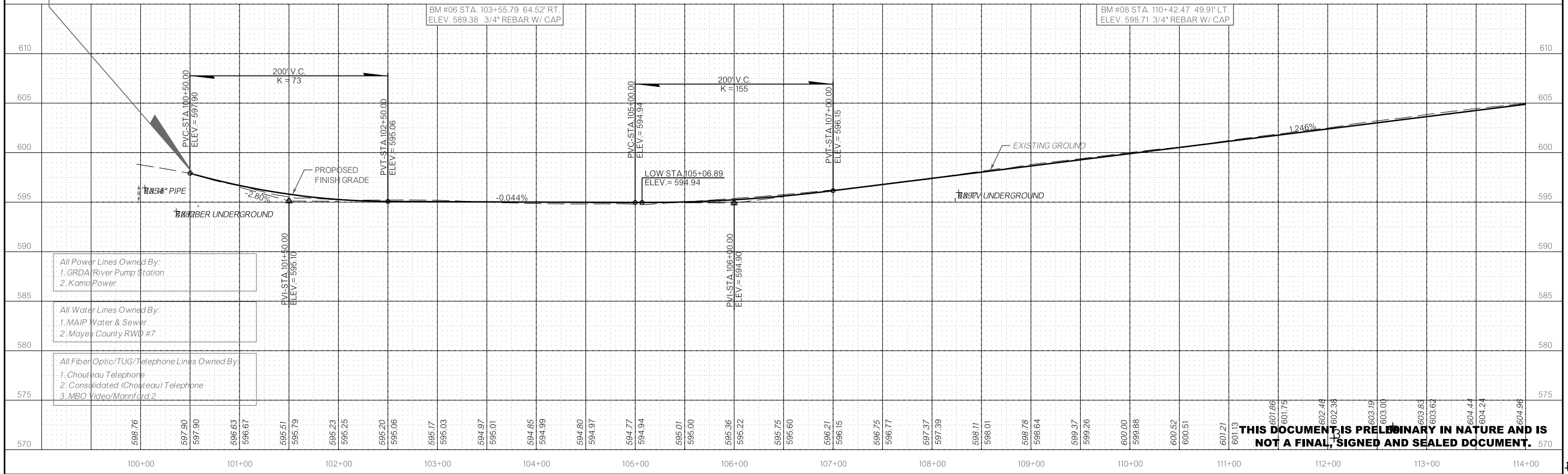
\$\$\$PRF\$\$\$\$

\$\$\$DN\$\$\$\$



LEGEND

- ASPHALT PAVEMENT RECONSTRUCTION
- DRIVEWAY RECONSTRUCTION



- All Power Lines Owned By:
- 1: GRDA/River Pump Station
  - 2: KamoPower
- All Water Lines Owned By:
- 1: MAIP Water & Sewer
  - 2: Mayes County RWD #7
- All Fiber Optic/TUG/Telephone Lines Owned By:
- 1: Chouteau Telephone
  - 2: Consolidated (Chouteau) Telephone
  - 3: MBO Video/Mannford 2

**THIS DOCUMENT IS PRELIMINARY IN NATURE AND IS NOT A FINAL, SIGNED AND SEALED DOCUMENT.**

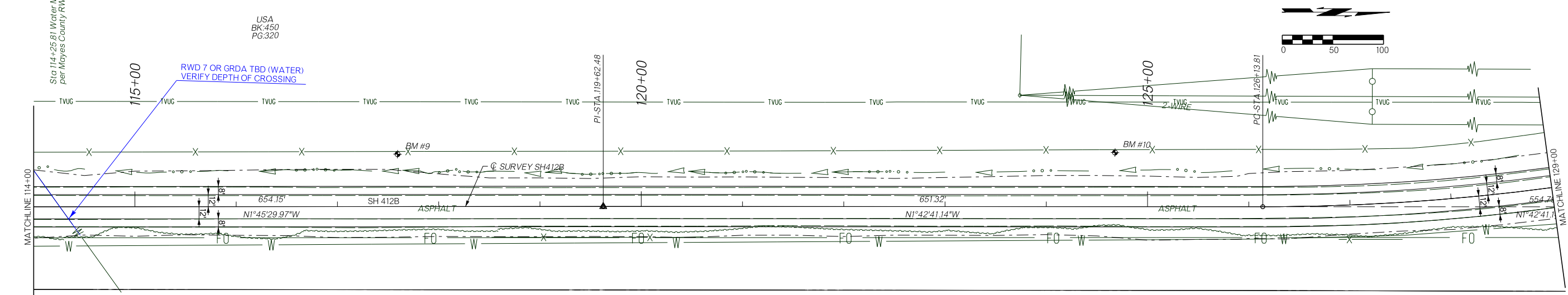
\$DATE\$

\$PRF\$

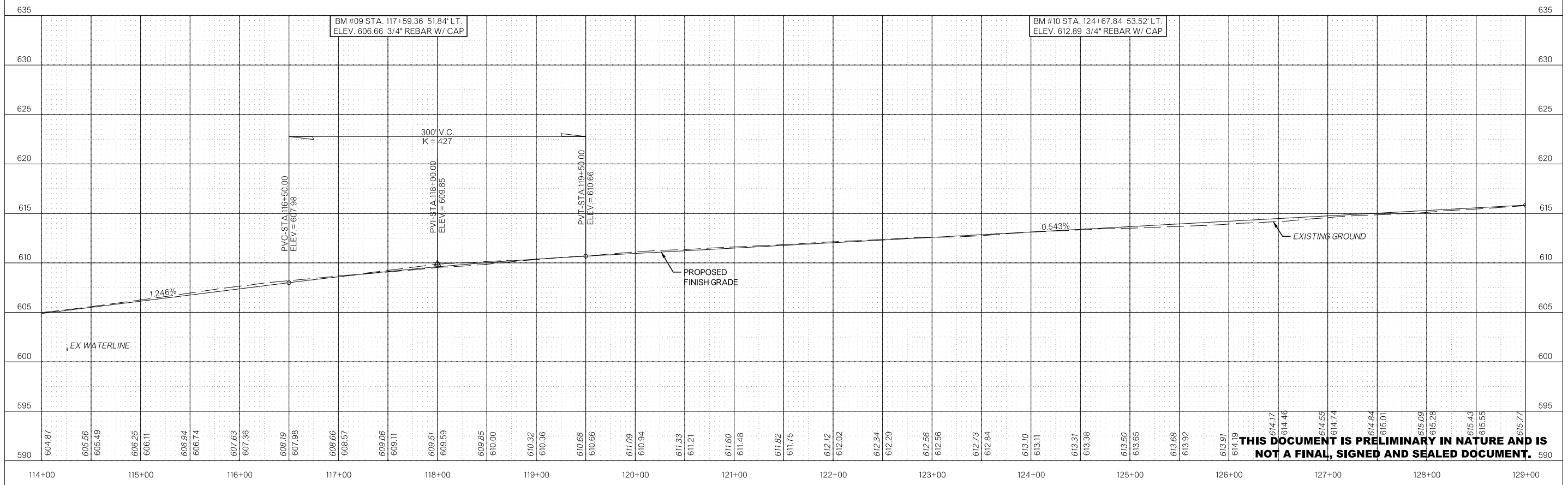
\$DCN\$

OKLAHOMA DEPARTMENT OF TRANSPORTATION  
 THIS DOCUMENT IS PRELIMINARY  
 IN NATURE AND IS NOT A FINAL,  
 SIGNED AND SEALED DOCUMENT.  
 JULY 2023

OKLAHOMA DEPARTMENT OF TRANSPORTATION  
**PRELIMINARY  
 PLANS**  
 9/18/2023

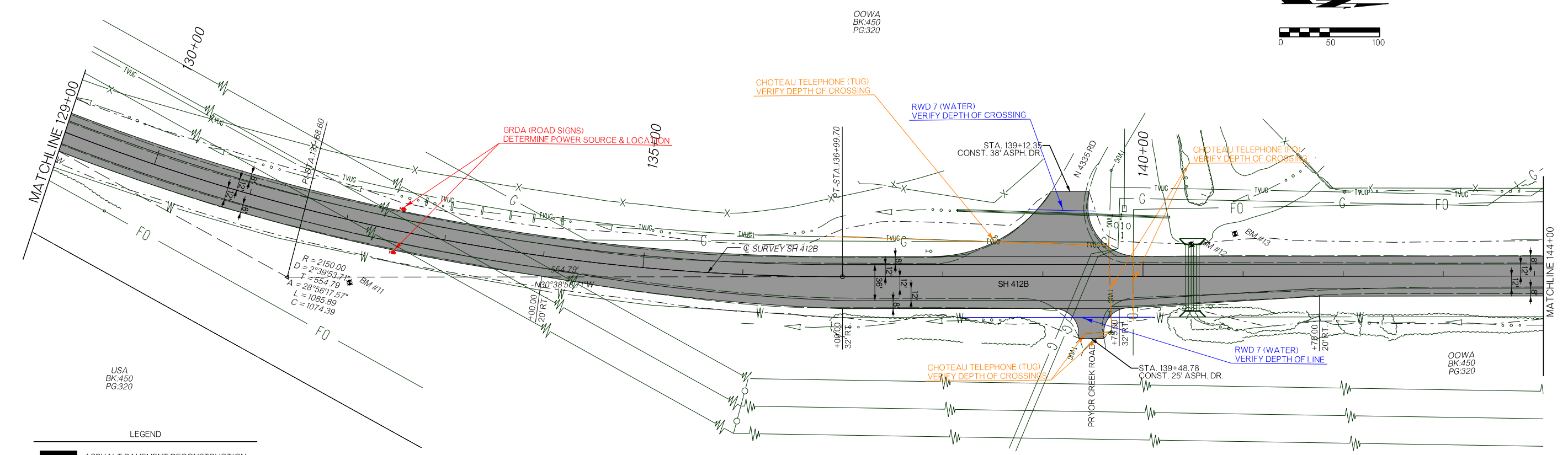
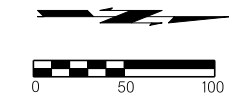


USA  
BK.450  
PG.320



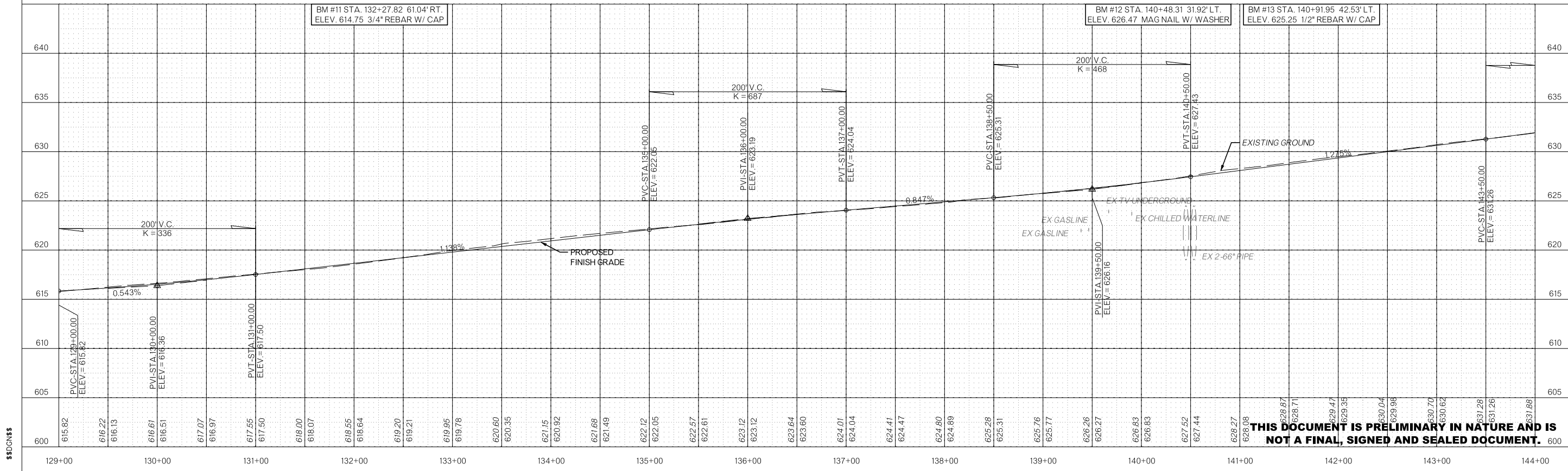
**THIS DOCUMENT IS PRELIMINARY IN NATURE AND IS  
 NOT A FINAL, SIGNED AND SEALED DOCUMENT.**

SDATES



- LEGEND
- ASPHALT PAVEMENT RECONSTRUCTION
  - DRIVEWAY RECONSTRUCTION

SDPRF



SDCNSES

**THIS DOCUMENT IS PRELIMINARY IN NATURE AND IS NOT A FINAL, SIGNED AND SEALED DOCUMENT.**

SDATES

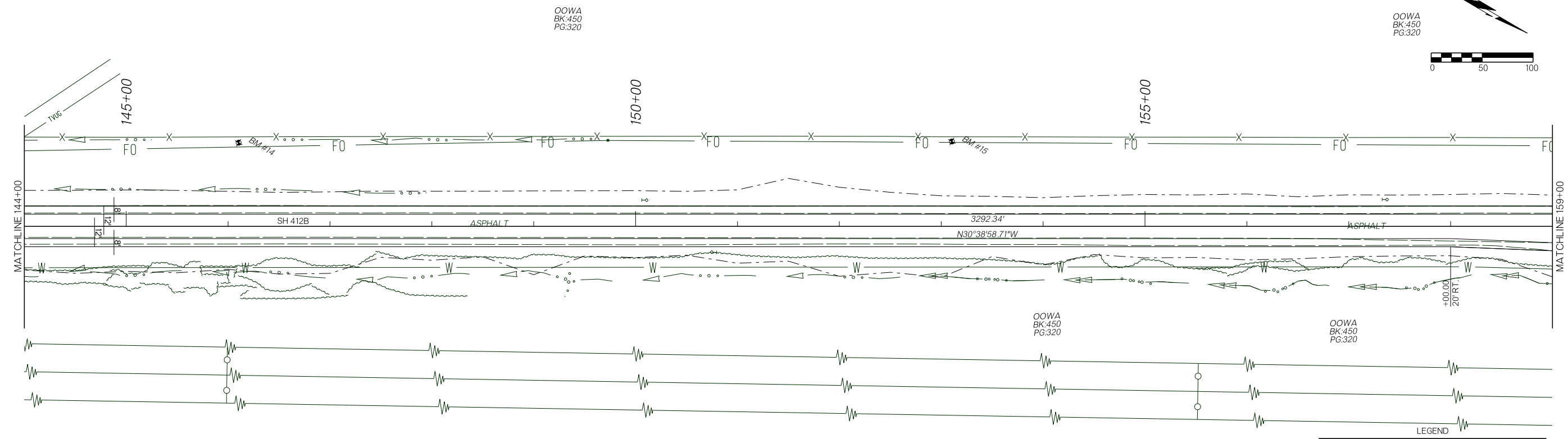
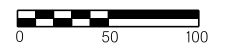
SPRF \$

SDON \$

OKLAHOMA DEPARTMENT OF TRANSPORTATION  
 THIS DOCUMENT IS PRELIMINARY  
 IN NATURE AND IS NOT A FINAL,  
 SIGNED AND SEALED DOCUMENT.  
 JULY 2023

OKLAHOMA DEPARTMENT OF TRANSPORTATION  
**PRELIMINARY  
 PLANS**  
 9/18/2023

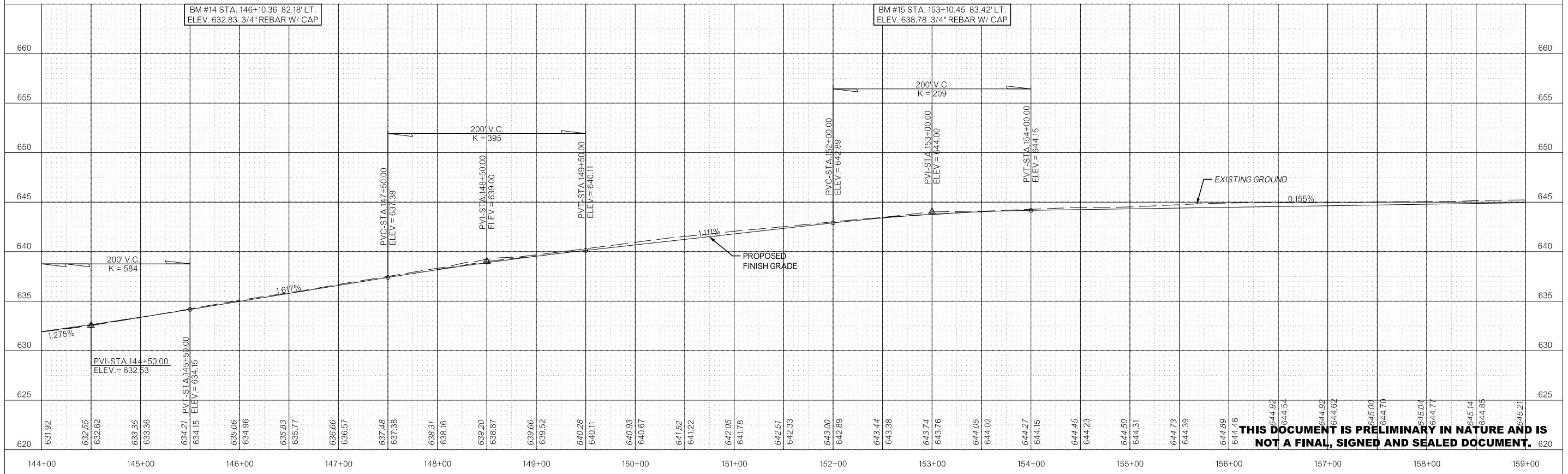
OOWA  
BK:450  
PG:320



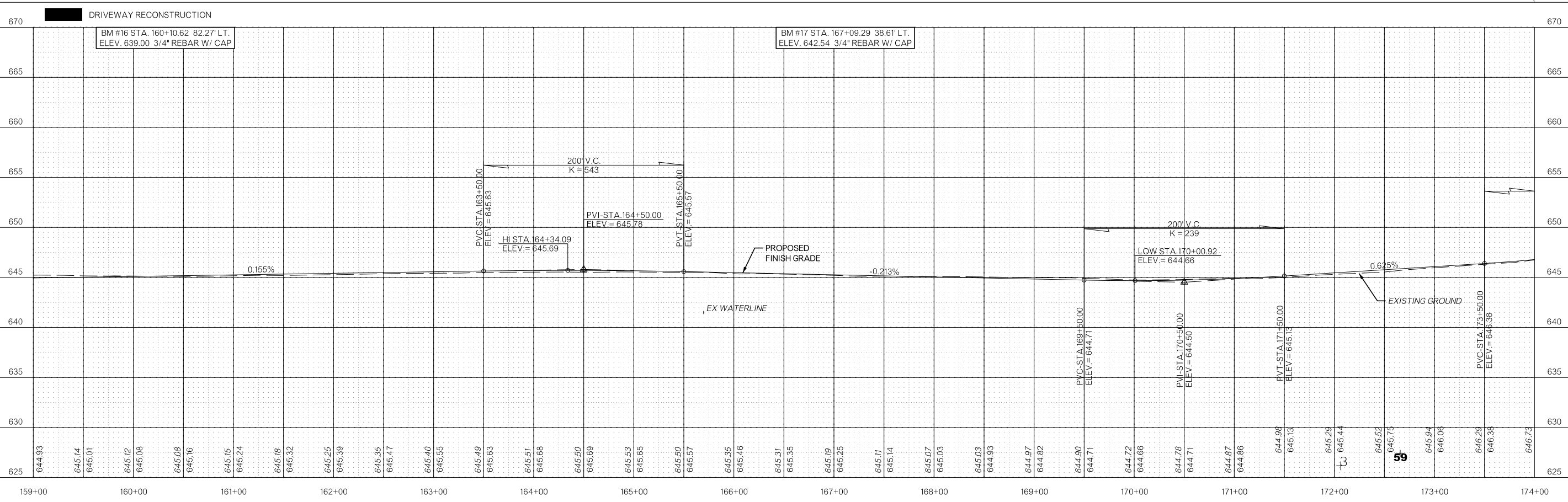
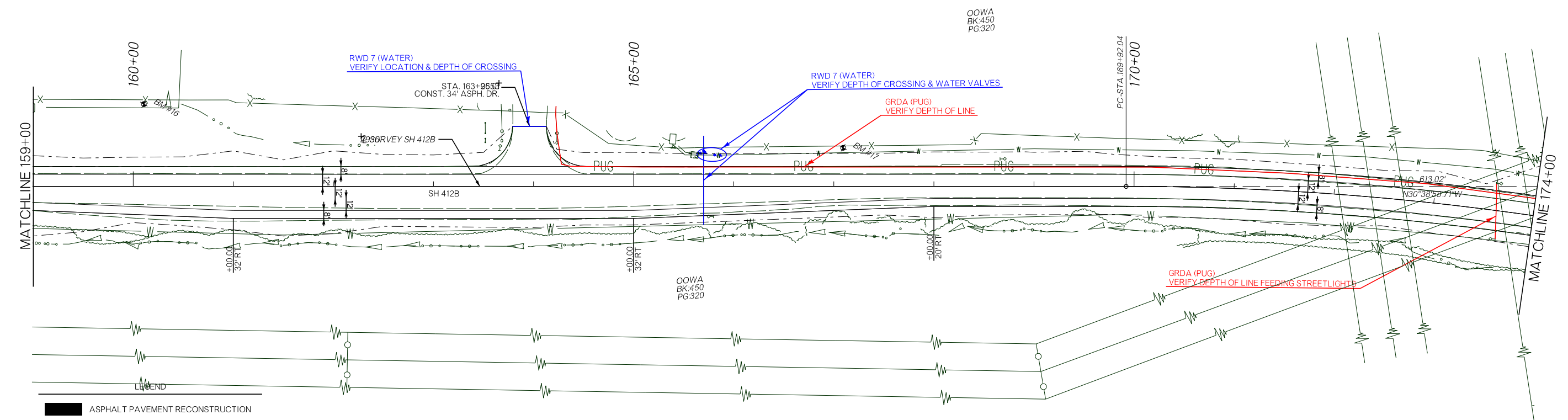
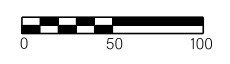
LEGEND

ASPHALT PAVEMENT RECONSTRUCTION

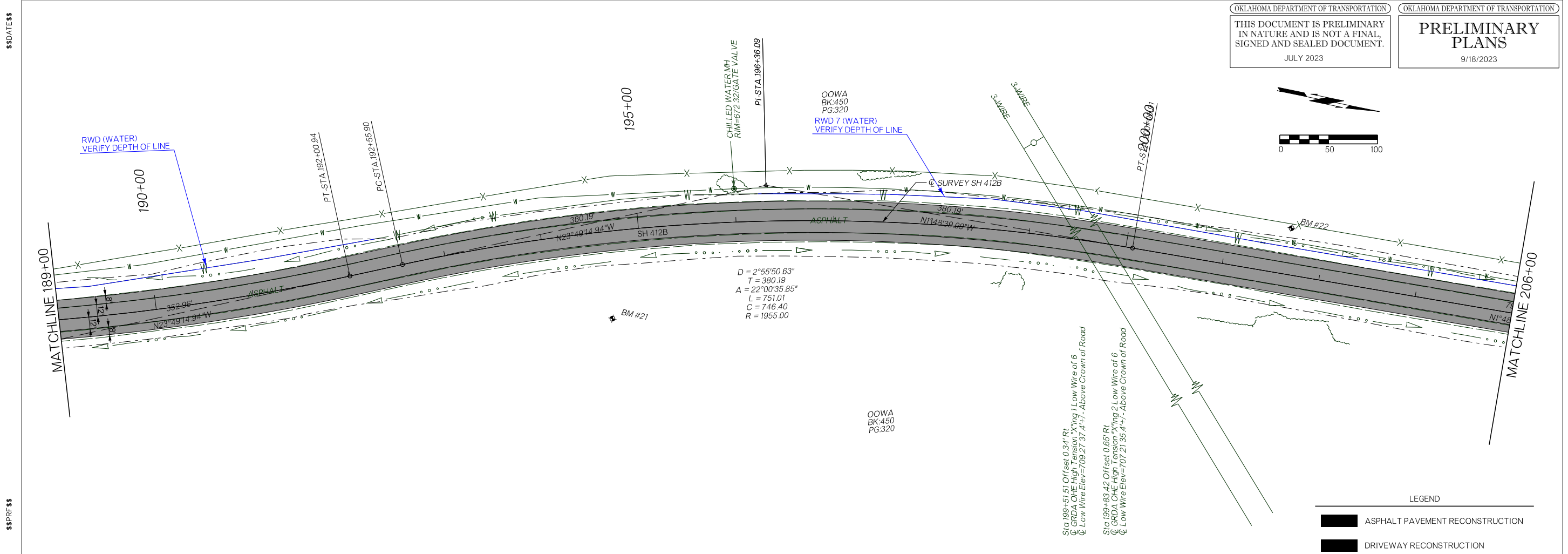
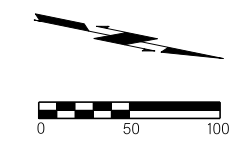
DRIVEWAY RECONSTRUCTION



**THIS DOCUMENT IS PRELIMINARY IN NATURE AND IS NOT A FINAL, SIGNED AND SEALED DOCUMENT.**

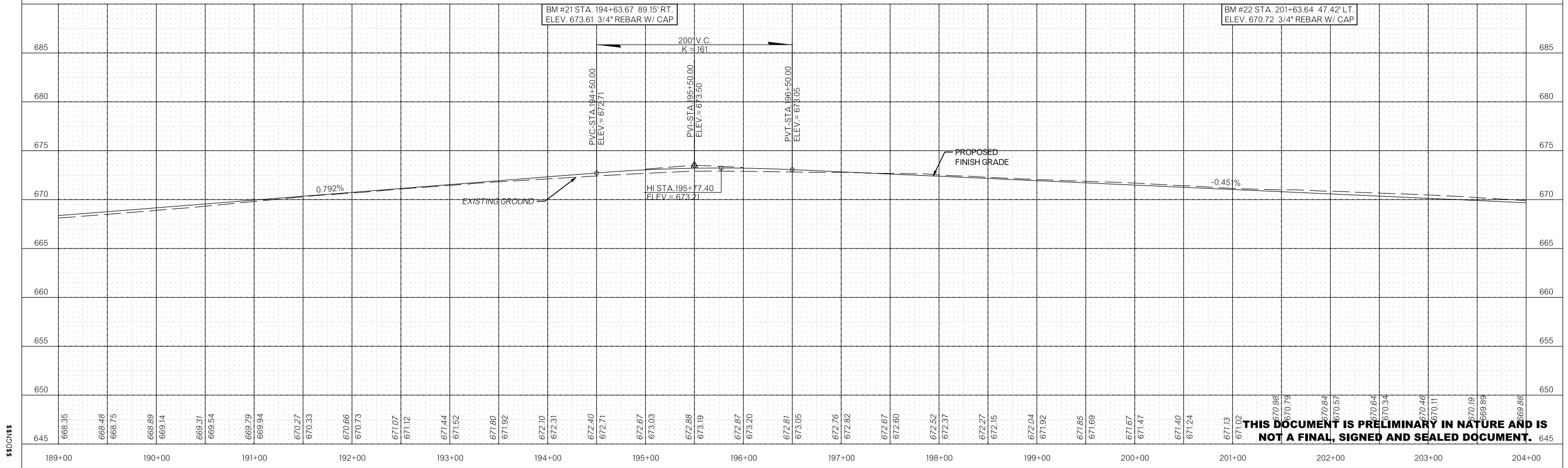






**LEGEND**

- ASPHALT PAVEMENT RECONSTRUCTION
- DRIVEWAY RECONSTRUCTION



**THIS DOCUMENT IS PRELIMINARY IN NATURE AND IS NOT A FINAL, SIGNED AND SEALED DOCUMENT.**

\$DATE\$\$  
 \$PRF\$\$  
 \$DGN\$\$

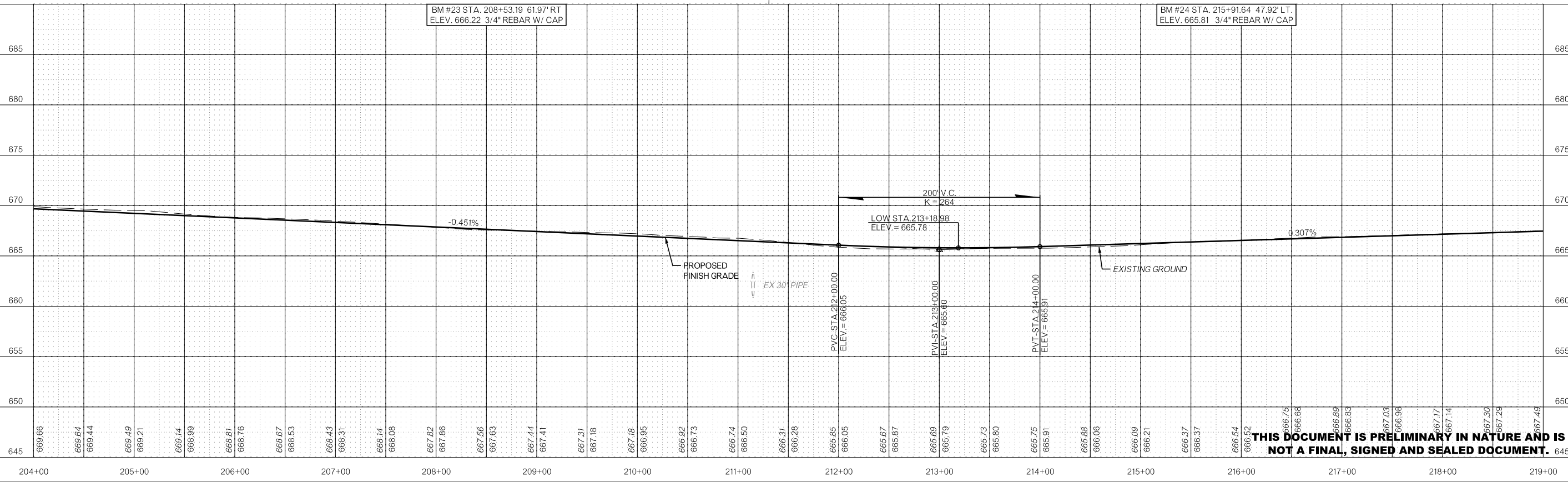
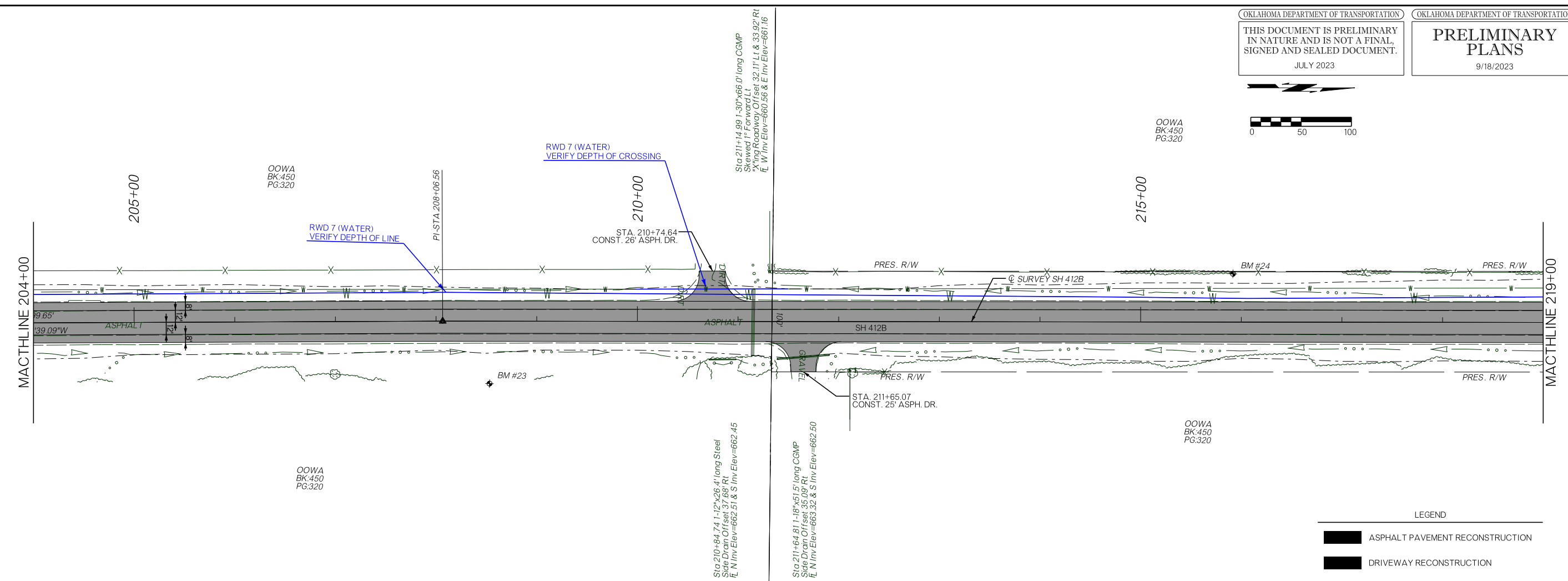
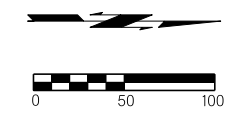
SDATES

SPRF \$

SDCN \$

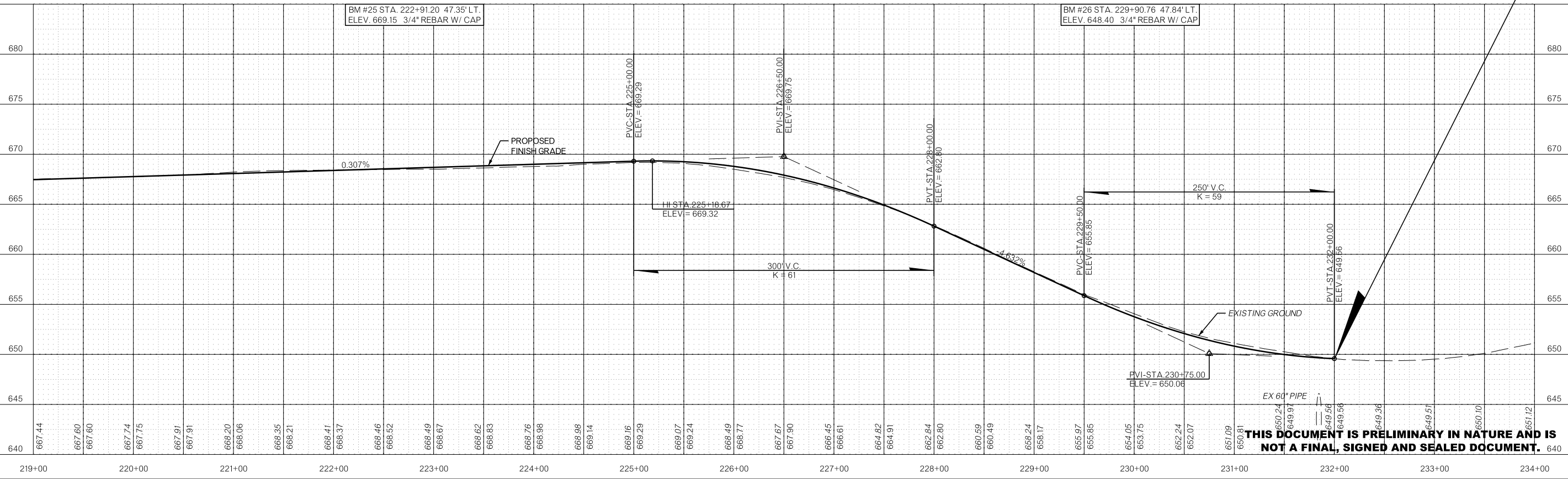
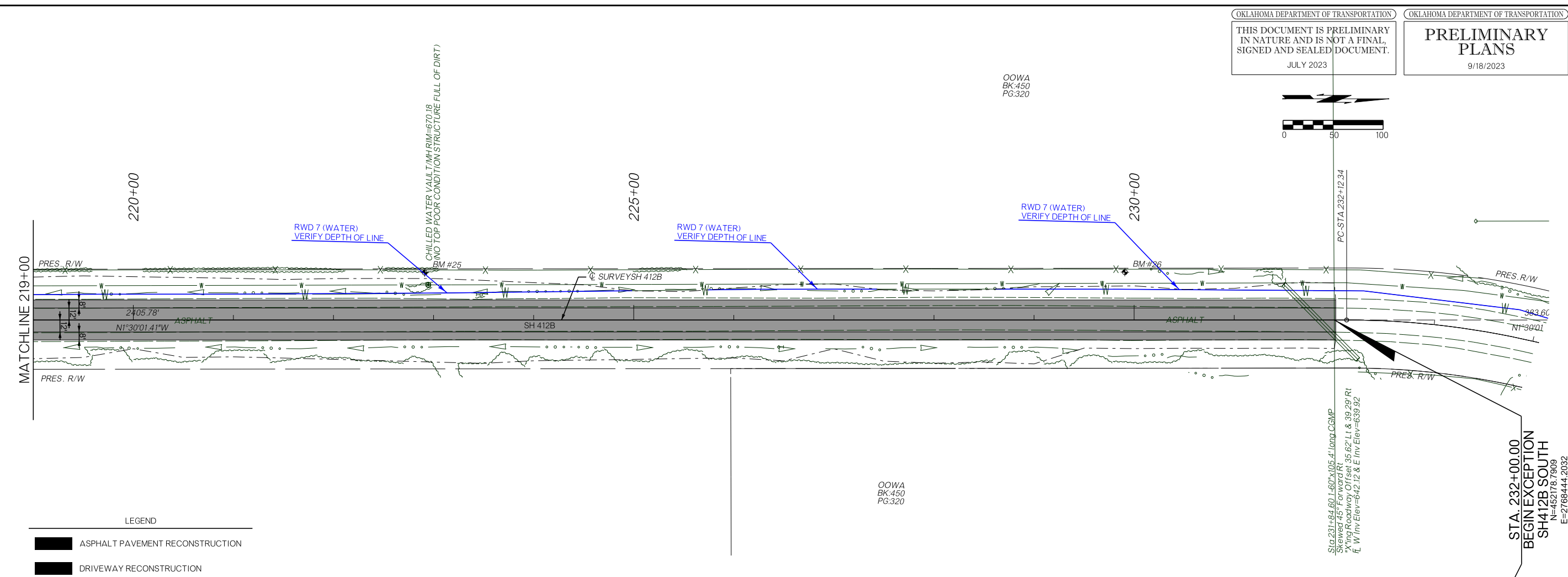
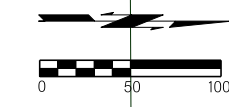
OKLAHOMA DEPARTMENT OF TRANSPORTATION  
 THIS DOCUMENT IS PRELIMINARY  
 IN NATURE AND IS NOT A FINAL,  
 SIGNED AND SEALED DOCUMENT.  
 JULY 2023

OKLAHOMA DEPARTMENT OF TRANSPORTATION  
**PRELIMINARY  
 PLANS**  
 9/18/2023

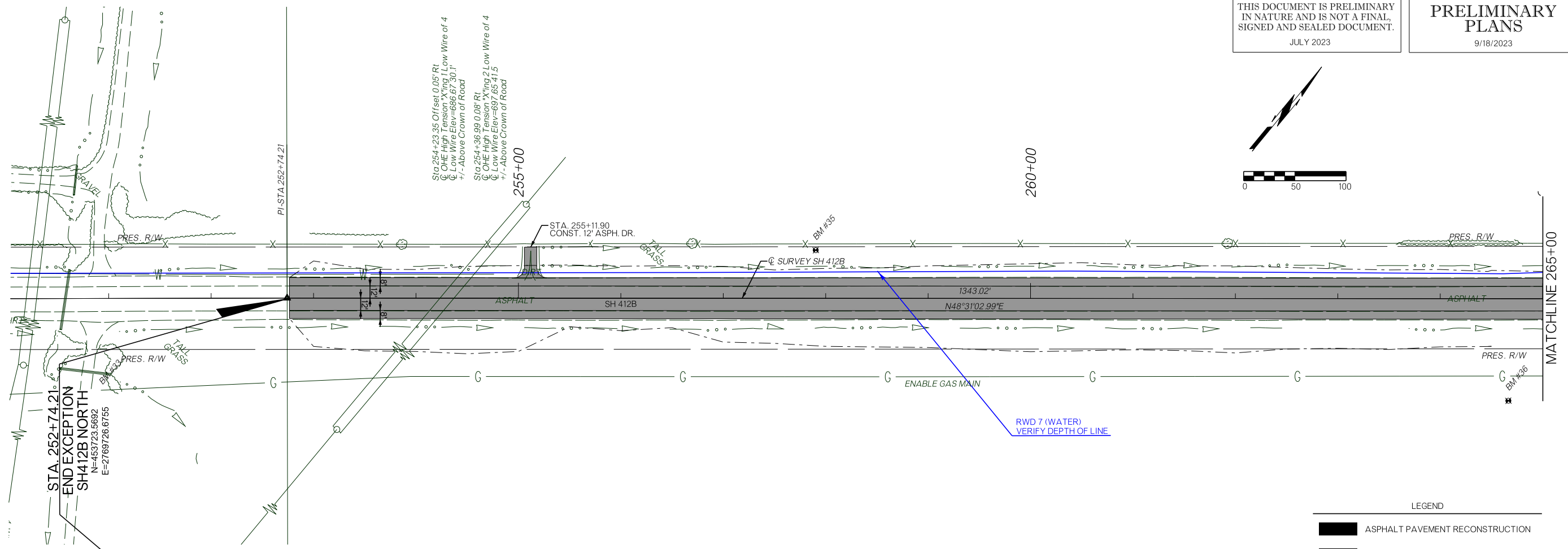
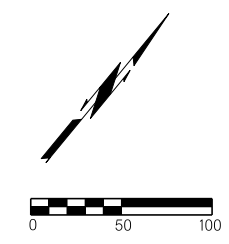


**THIS DOCUMENT IS PRELIMINARY IN NATURE AND IS NOT A FINAL, SIGNED AND SEALED DOCUMENT.**



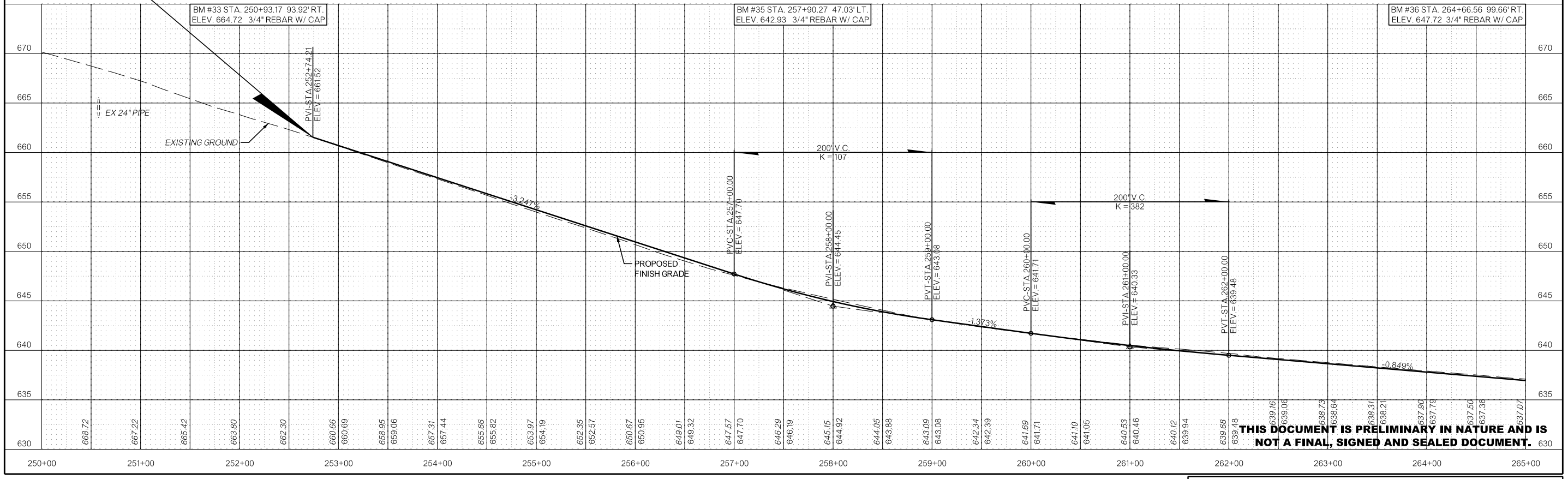


**THIS DOCUMENT IS PRELIMINARY IN NATURE AND IS NOT A FINAL, SIGNED AND SEALED DOCUMENT.**



**LEGEND**

- ASPHALT PAVEMENT RECONSTRUCTION
- DRIVEWAY RECONSTRUCTION



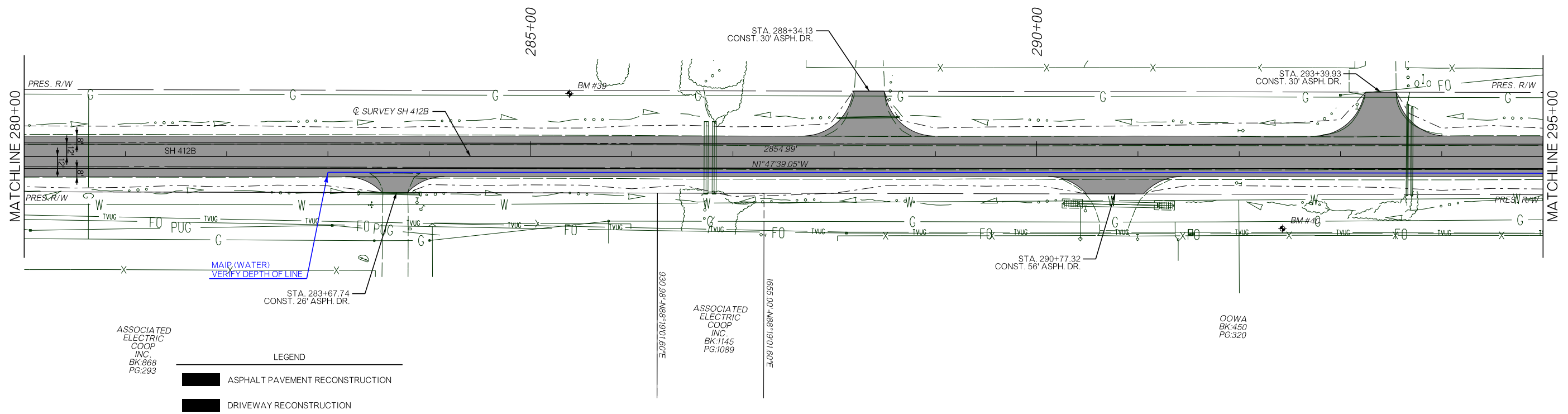
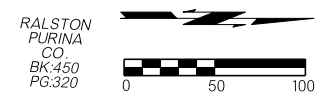
**THIS DOCUMENT IS PRELIMINARY IN NATURE AND IS NOT A FINAL, SIGNED AND SEALED DOCUMENT.**



\$DATE\$\$

\$PRF\$\$

\$DCN\$\$



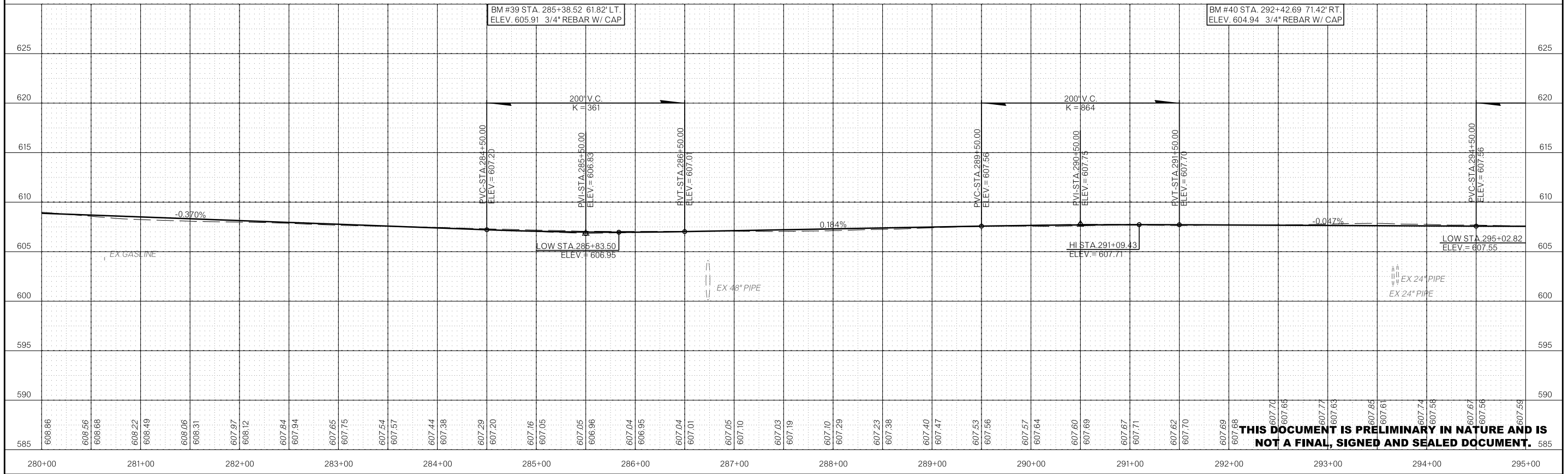
ASSOCIATED ELECTRIC COOP INC. BK:868 PG:293

ASSOCIATED ELECTRIC COOP INC. BK:1145 PG:1089

OOWA BK:450 PG:320

LEGEND

- ASPHALT PAVEMENT RECONSTRUCTION
- DRIVEWAY RECONSTRUCTION



**THIS DOCUMENT IS PRELIMINARY IN NATURE AND IS NOT A FINAL, SIGNED AND SEALED DOCUMENT.**

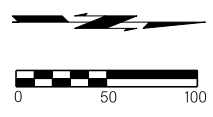
SDATES

SPRF

SDGN

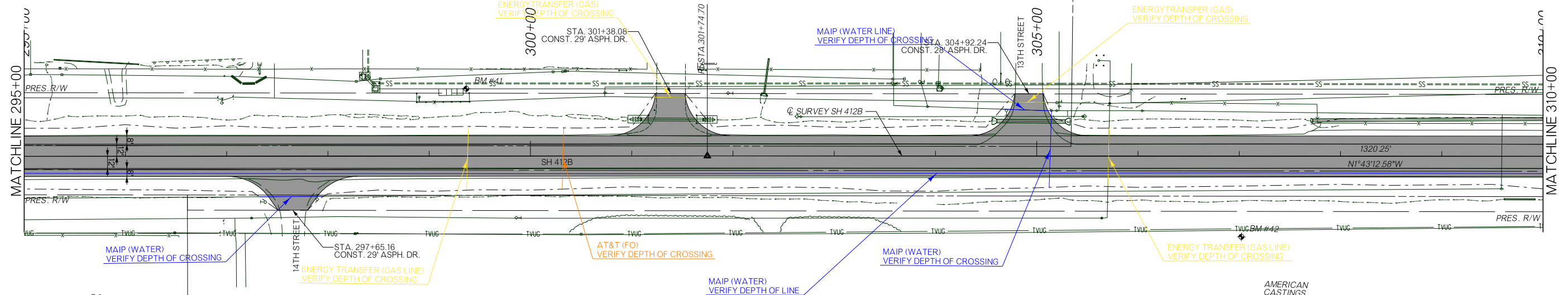
OKLAHOMA DEPARTMENT OF TRANSPORTATION  
 THIS DOCUMENT IS PRELIMINARY IN NATURE AND IS NOT A FINAL, SIGNED AND SEALED DOCUMENT.  
 JULY 2023

OKLAHOMA DEPARTMENT OF TRANSPORTATION  
**PRELIMINARY PLANS**  
 9/18/2023



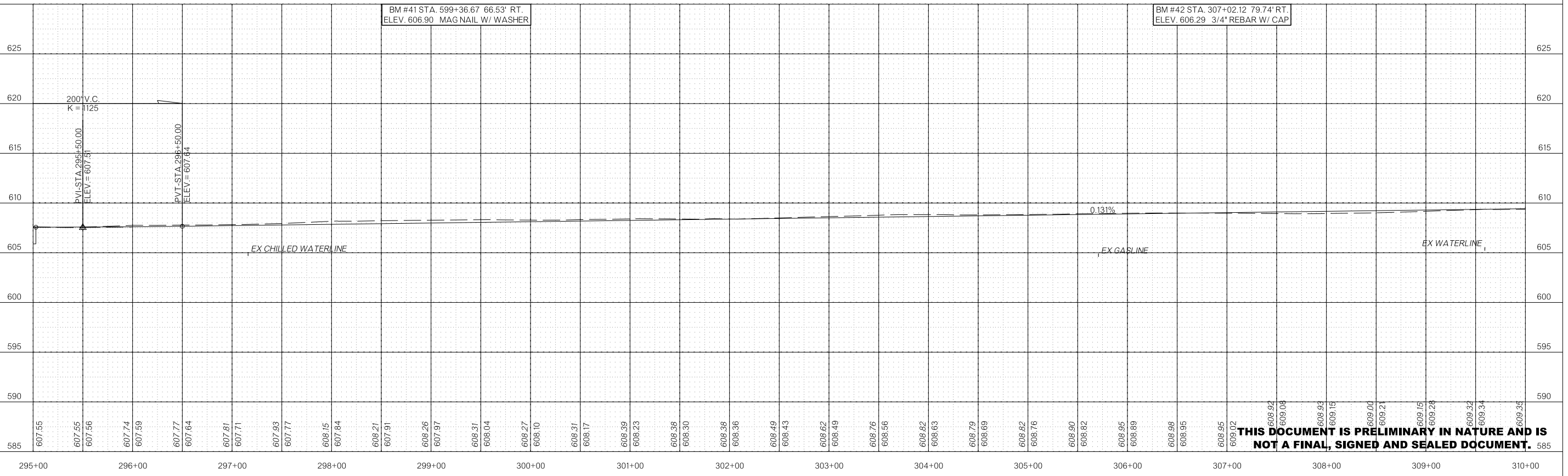
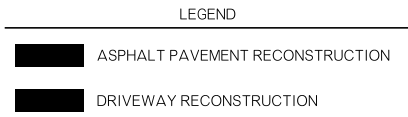
OOWA  
 BK:450  
 PG:320

RALSTON  
 PURINA  
 CO  
 BK:450  
 PG:320



OOWA  
 BK:450  
 PG:320

AMERICAN  
 CASTINGS,  
 LLC  
 BK:958  
 PG:330



**THIS DOCUMENT IS PRELIMINARY IN NATURE AND IS NOT A FINAL, SIGNED AND SEALED DOCUMENT.**

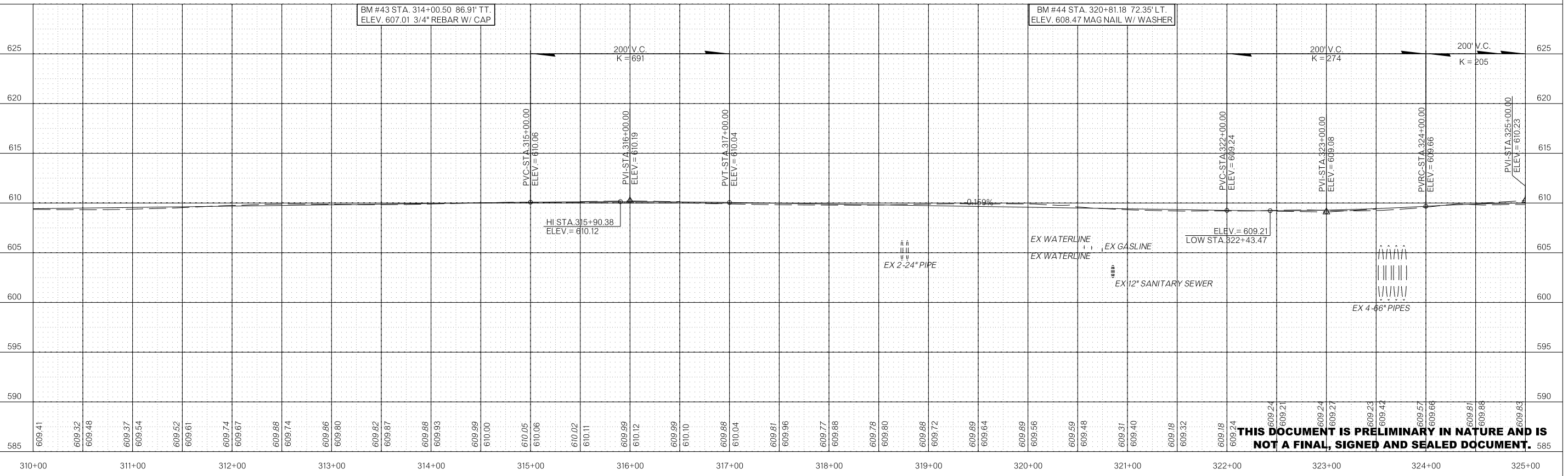
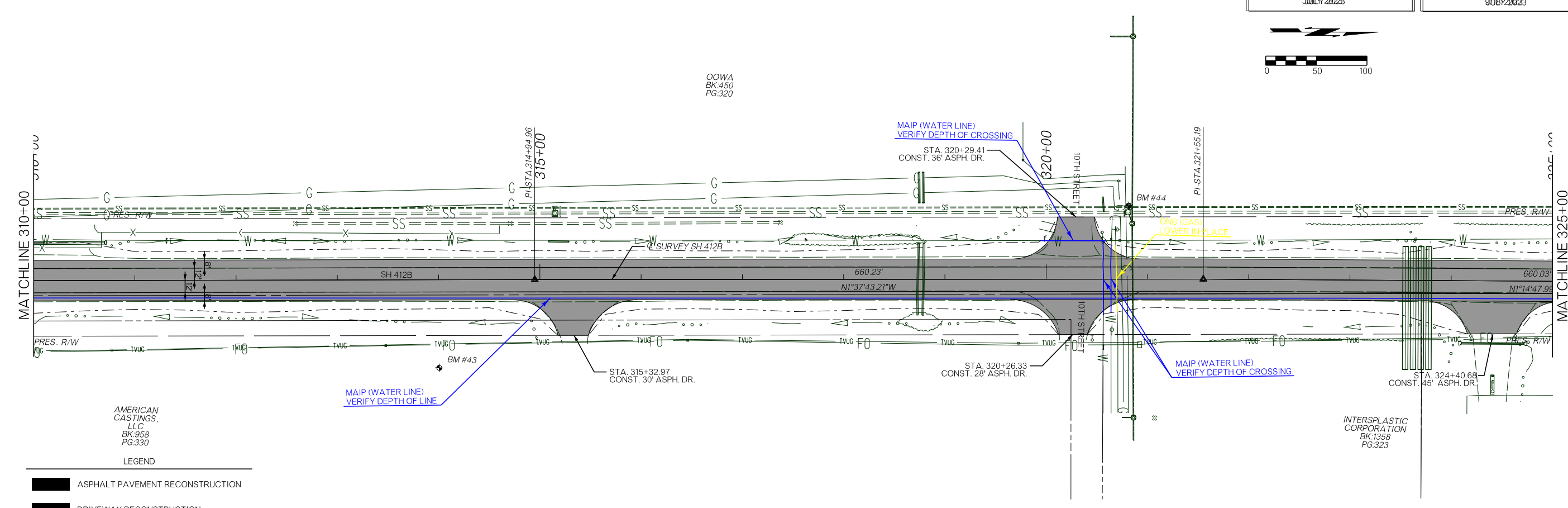
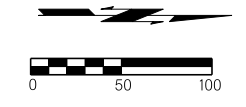
SDATES

SDPRF

SDCNSES

OKLAHOMA DEPARTMENT OF TRANSPORTATION  
 THIS DOCUMENT IS PRELIMINARY IN NATURE AND IS NOT A FINAL, SIGNED AND SEALED DOCUMENT.  
 JULY 2023

**PRELIMINARY PLANS**  
 JULY 2023



**THIS DOCUMENT IS PRELIMINARY IN NATURE AND IS NOT A FINAL, SIGNED AND SEALED DOCUMENT.**

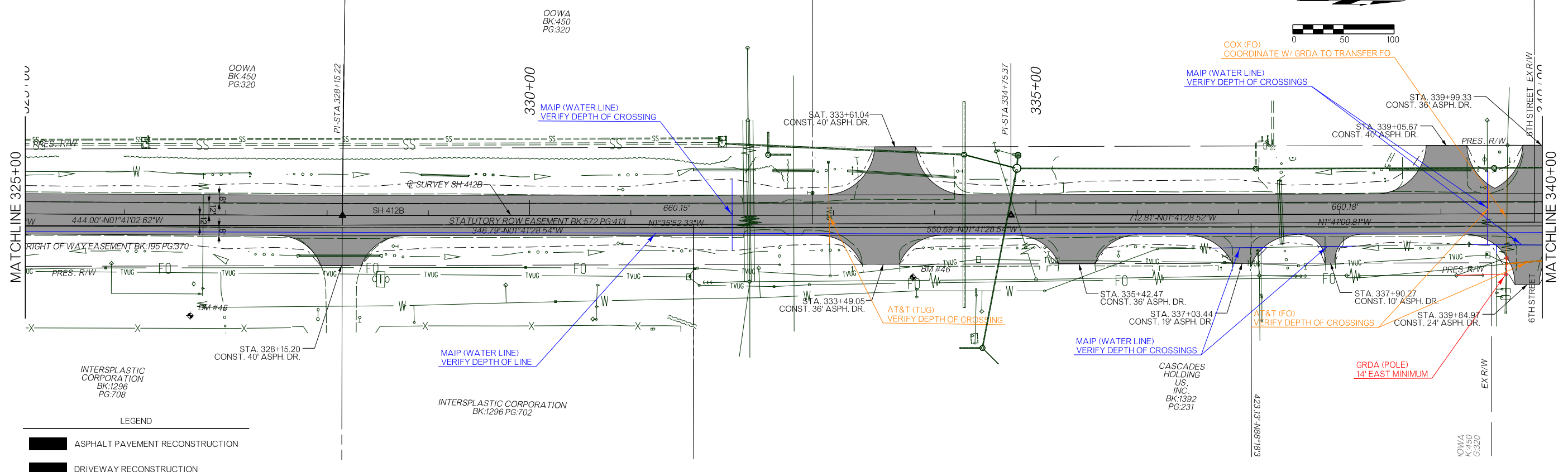
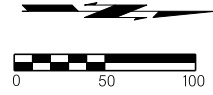
\$D AT ESS

\$SPRF \$S

\$DCN \$S

OKLAHOMA DEPARTMENT OF TRANSPORTATION  
 THIS DOCUMENT IS PRELIMINARY  
 IN NATURE AND IS NOT A FINAL,  
 SIGNED AND SEALED DOCUMENT.  
 JULY 2023

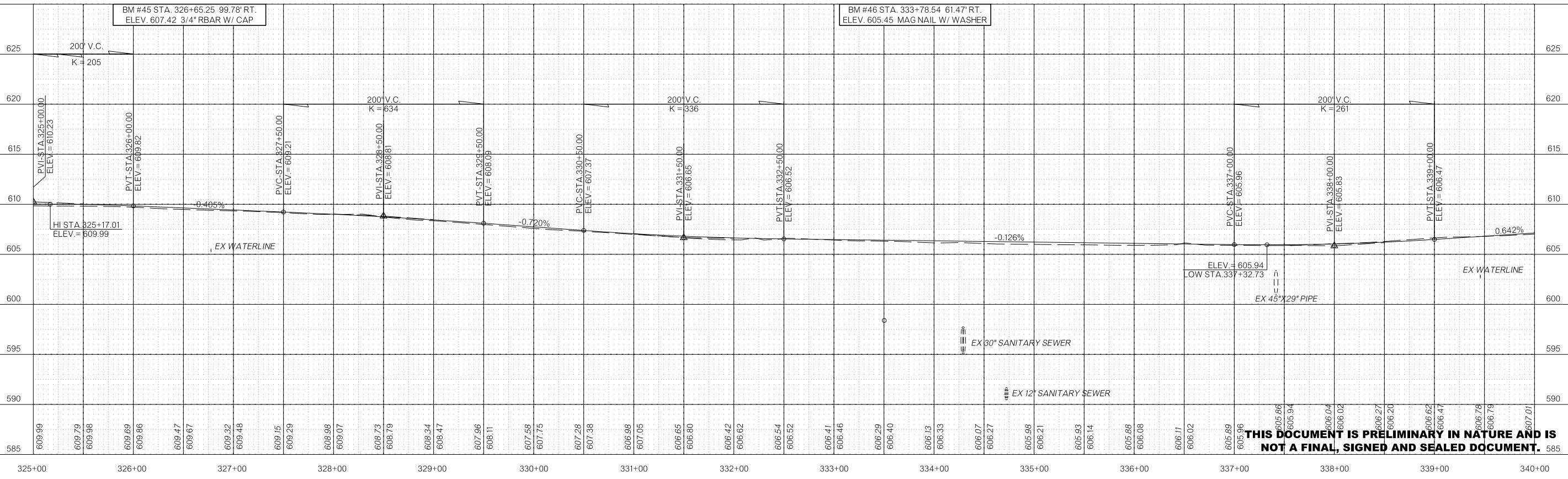
OKLAHOMA DEPARTMENT OF TRANSPORTATION  
**PRELIMINARY  
 PLANS**  
 9/18/2023



LEGEND

ASPHALT PAVEMENT RECONSTRUCTION

DRIVEWAY RECONSTRUCTION



**THIS DOCUMENT IS PRELIMINARY IN NATURE AND IS NOT A FINAL, SIGNED AND SEALED DOCUMENT.**

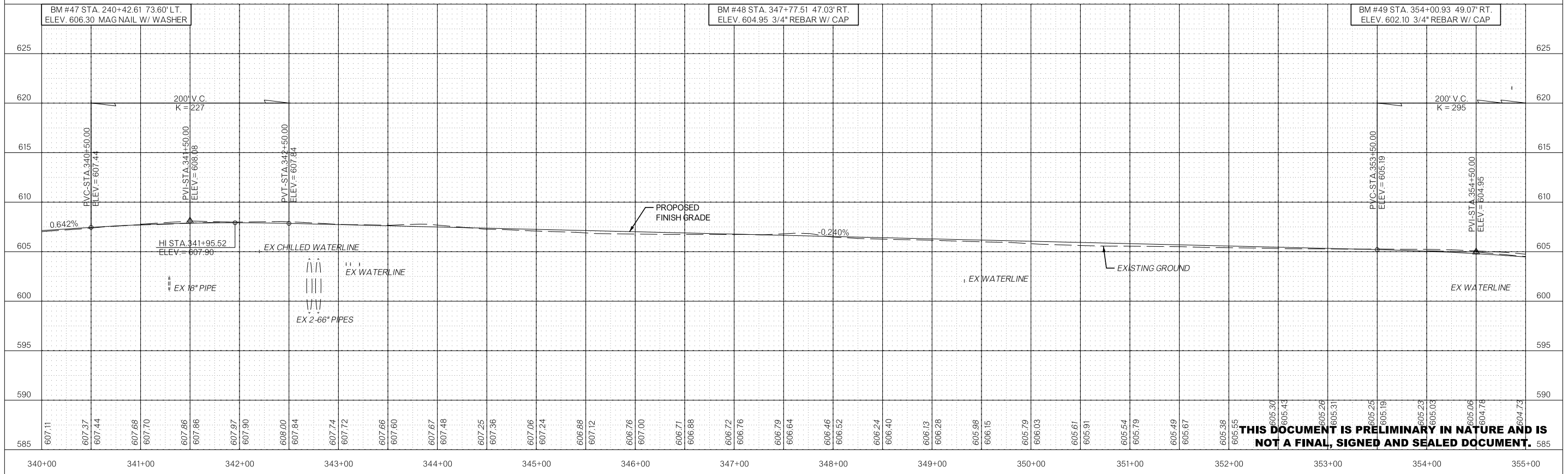
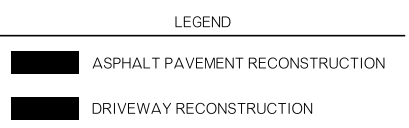
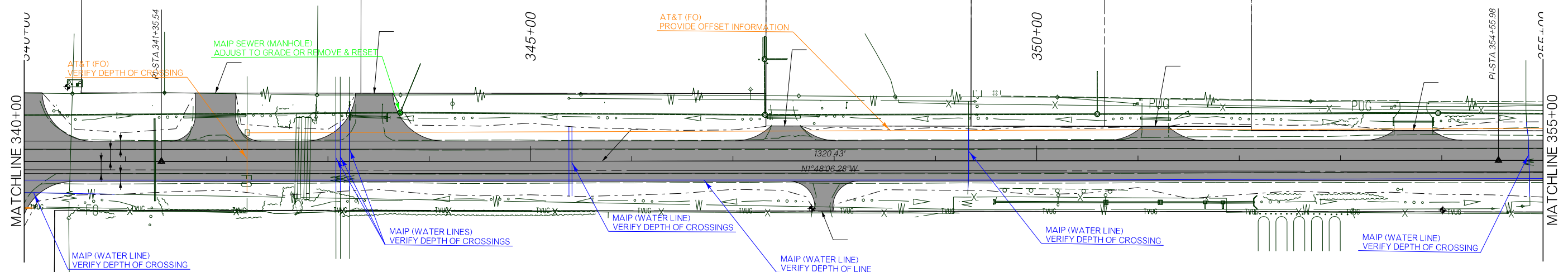
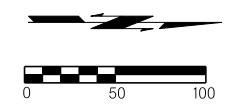
SDATES

SDPRF

SDCNSES

OKLAHOMA DEPARTMENT OF TRANSPORTATION  
 THIS DOCUMENT IS PRELIMINARY IN NATURE AND IS NOT A FINAL, SIGNED AND SEALED DOCUMENT.  
 JULY 2023

OKLAHOMA DEPARTMENT OF TRANSPORTATION  
**PRELIMINARY PLANS**  
 9/18/2023



**THIS DOCUMENT IS PRELIMINARY IN NATURE AND IS NOT A FINAL, SIGNED AND SEALED DOCUMENT.**



\$DATE\$\$

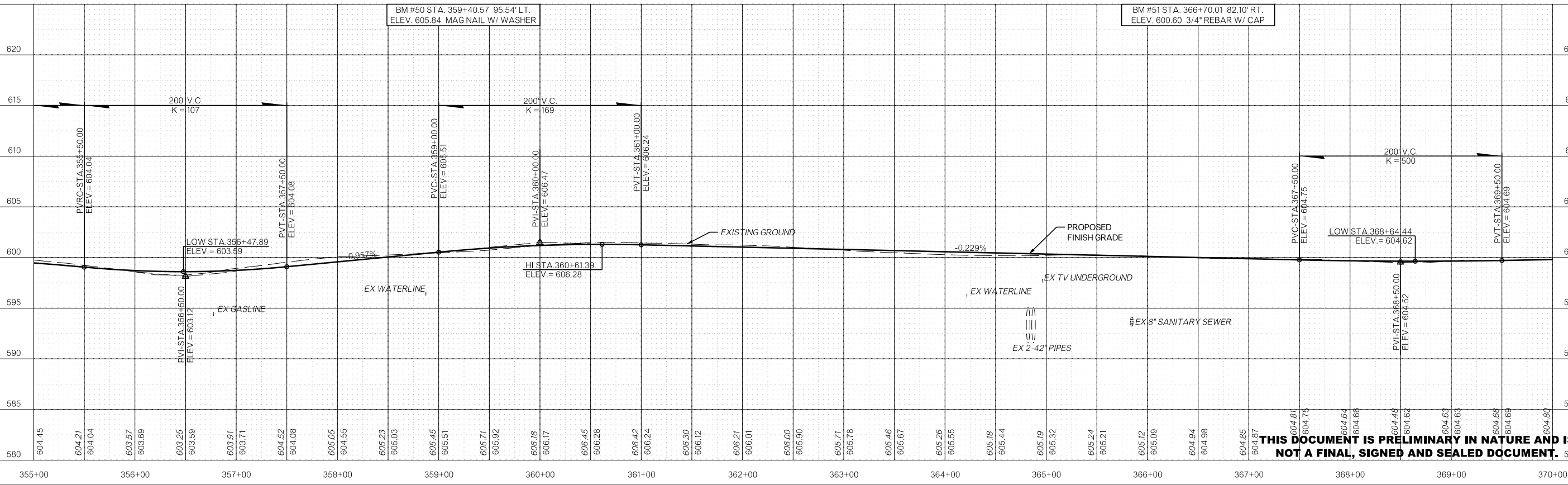
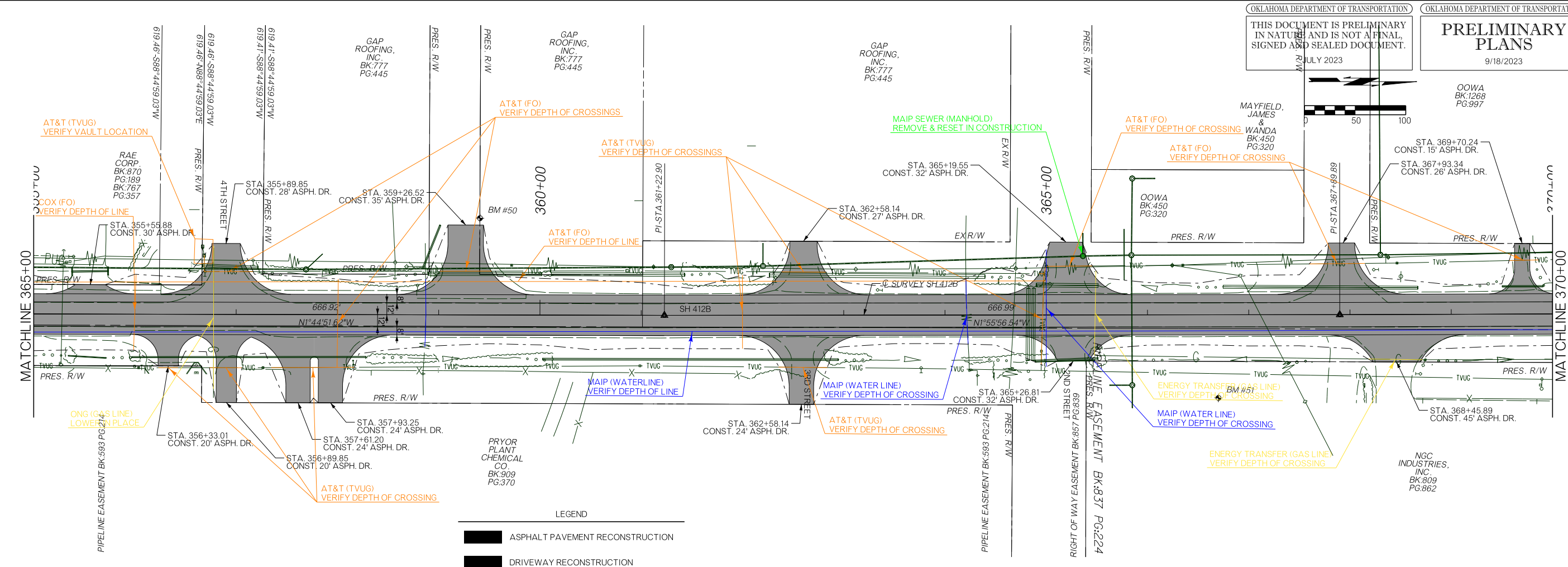
\$PRF\$\$

\$DCN\$\$

OKLAHOMA DEPARTMENT OF TRANSPORTATION  
 THIS DOCUMENT IS PRELIMINARY IN NATURE AND IS NOT A FINAL, SIGNED AND SEALED DOCUMENT.  
 JULY 2023

OKLAHOMA DEPARTMENT OF TRANSPORTATION  
**PRELIMINARY PLANS**  
 9/18/2023

OOWA BK:1268 PG:997



**THIS DOCUMENT IS PRELIMINARY IN NATURE AND IS NOT A FINAL, SIGNED AND SEALED DOCUMENT.**

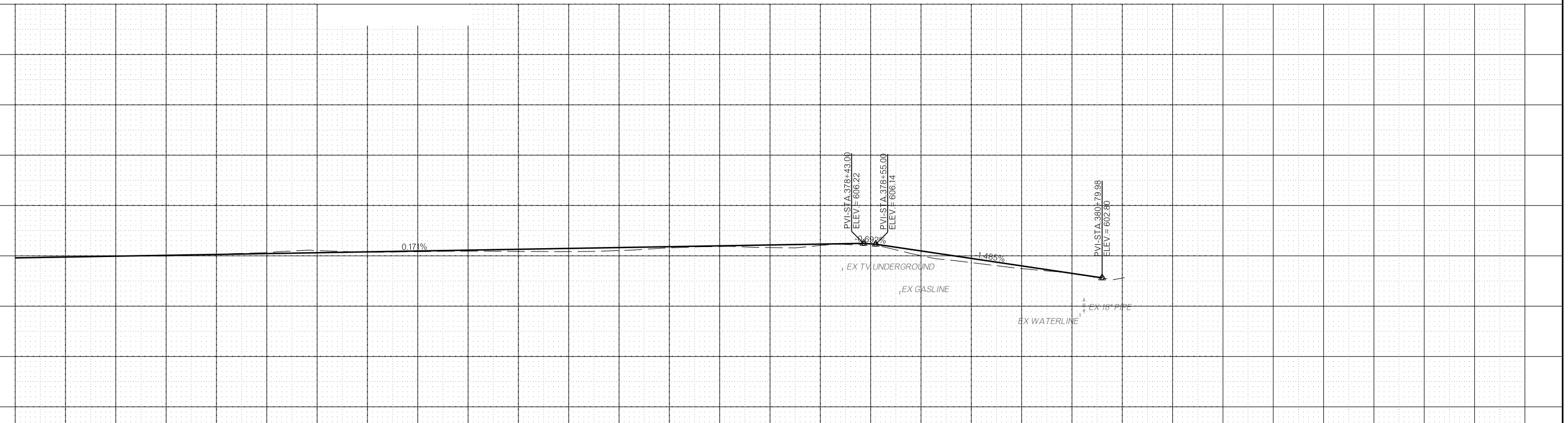
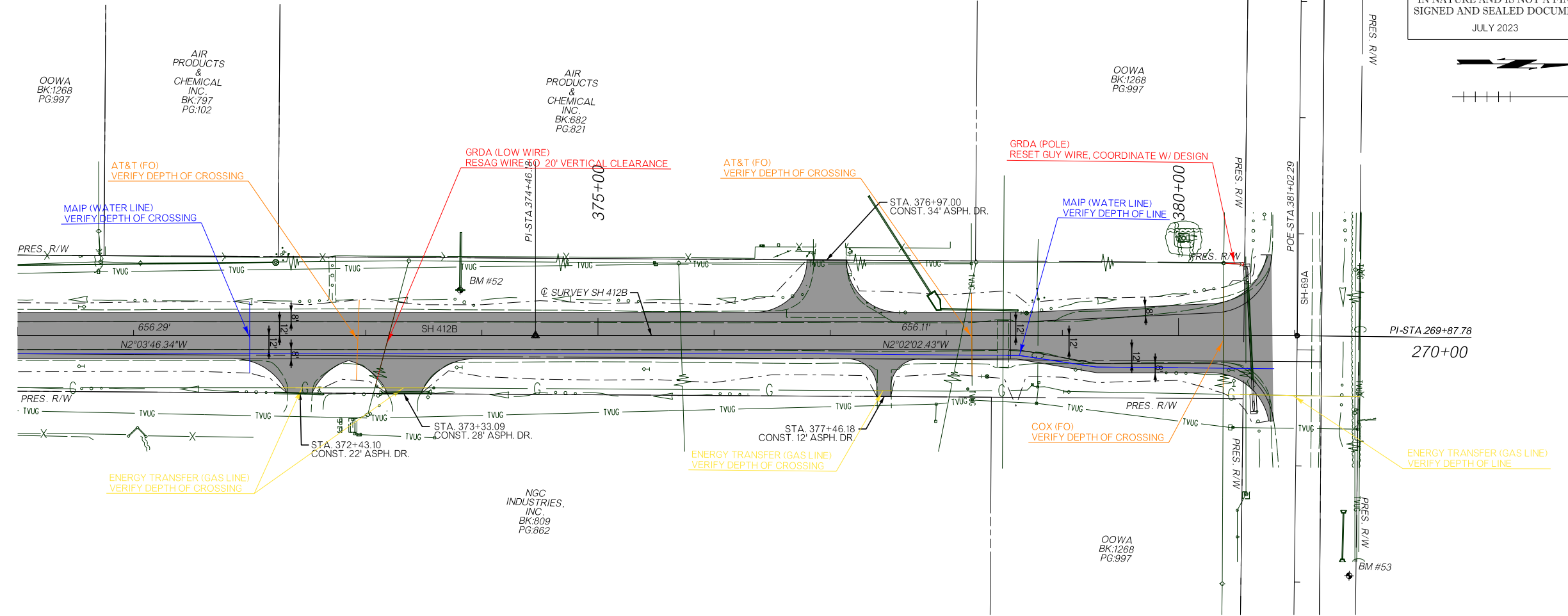
\$DATE\$\$

\$PRF\$\$

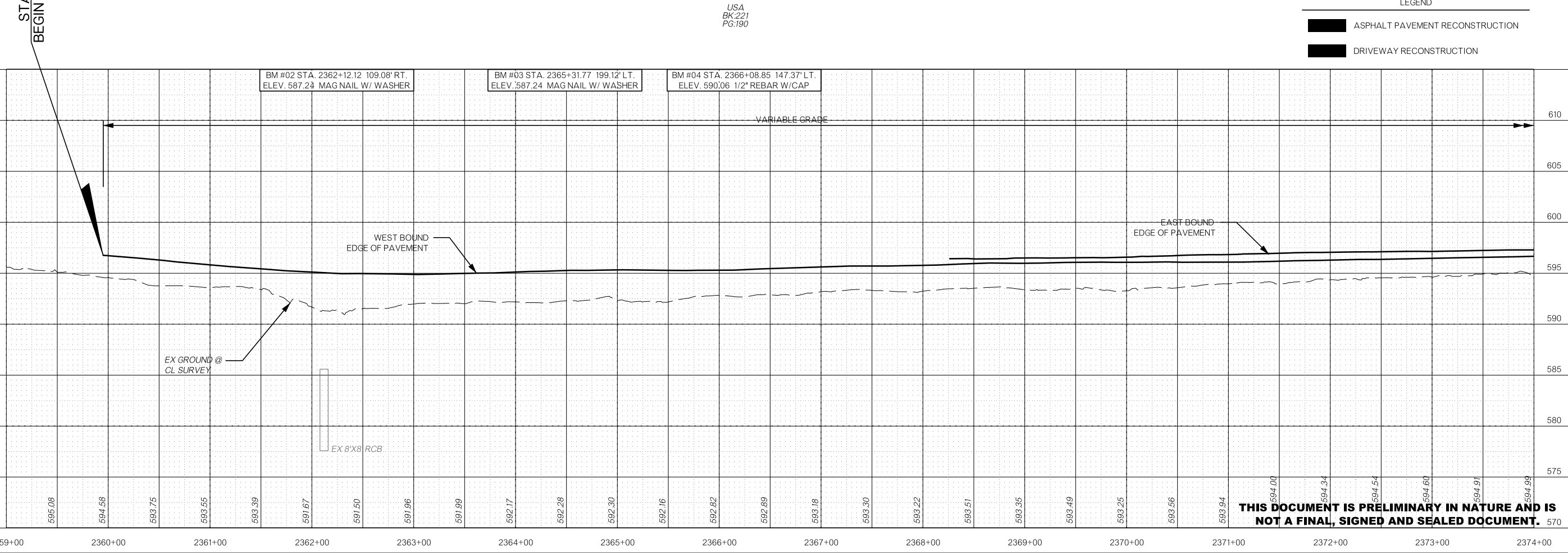
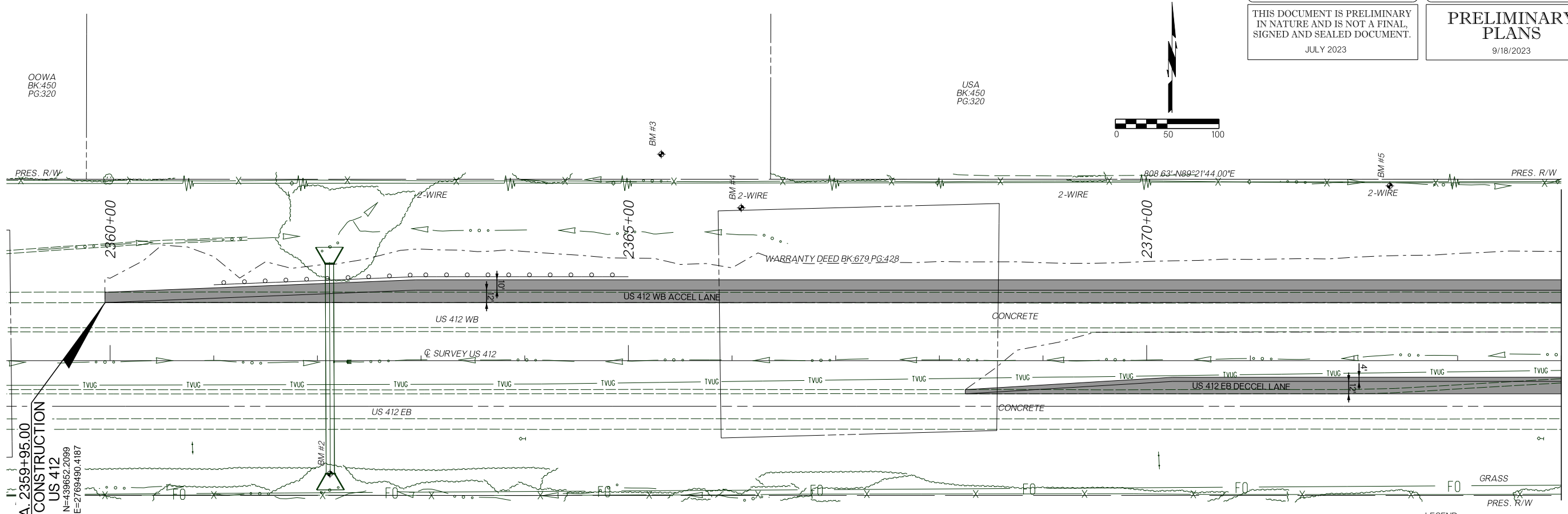
\$DCN\$\$

OKLAHOMA DEPARTMENT OF TRANSPORTATION  
 THIS DOCUMENT IS PRELIMINARY IN NATURE AND IS NOT A FINAL, SIGNED AND SEALED DOCUMENT.  
 JULY 2023

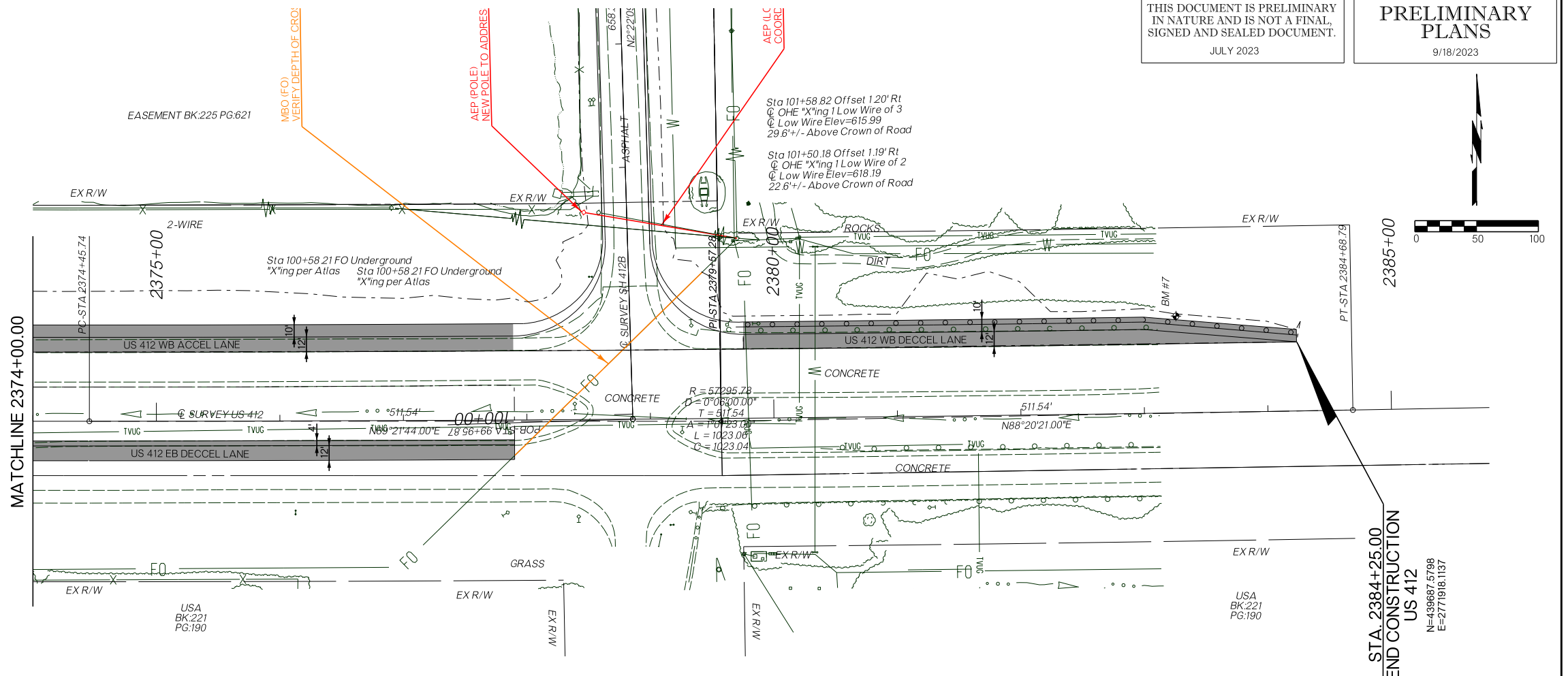
OKLAHOMA DEPARTMENT OF TRANSPORTATION  
**PRELIMINARY PLANS**  
 9/18/2023



**THIS DOCUMENT IS PRELIMINARY IN NATURE AND IS NOT A FINAL, SIGNED AND SEALED DOCUMENT.**

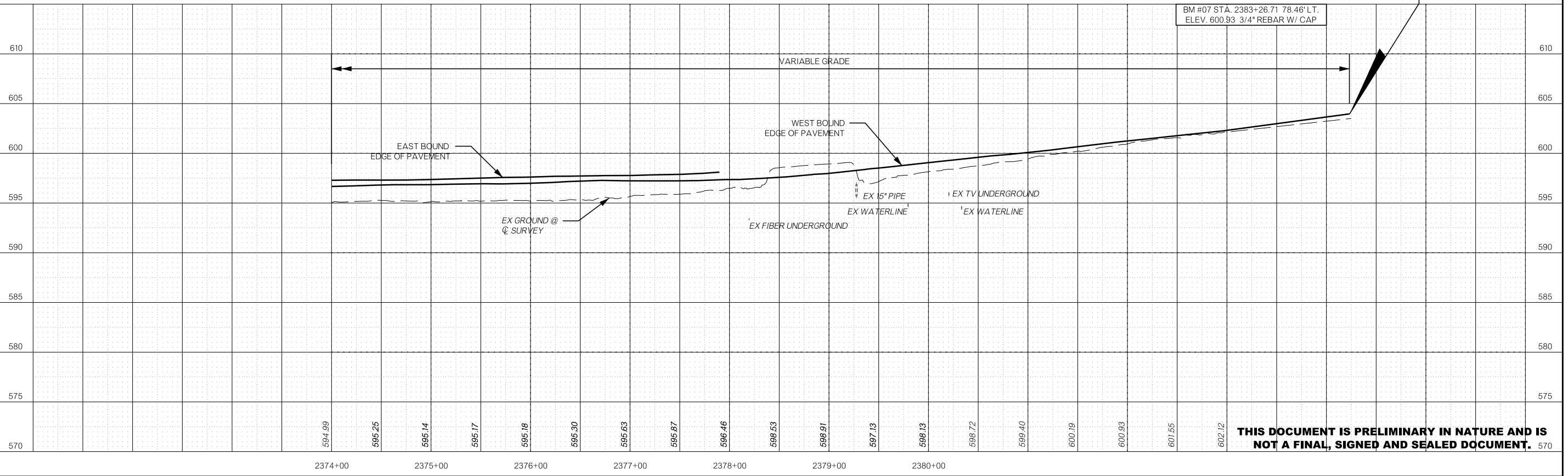
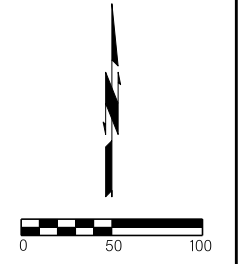


**THIS DOCUMENT IS PRELIMINARY IN NATURE AND IS NOT A FINAL, SIGNED AND SEALED DOCUMENT.**



LEGEND

- ASPHALT PAVEMENT RECONSTRUCTION
- DRIVEWAY RECONSTRUCTION



**THIS DOCUMENT IS PRELIMINARY IN NATURE AND IS NOT A FINAL, SIGNED AND SEALED DOCUMENT.**

\$D AT \$S

\$PRF \$S

\$DCN \$S