



WELCOME

**Meeting For
US-281 Over the Washita River,
Caddo County**

November 17, 2016

TROPICAL STORM ERIN (2007)



PURPOSE OF THIS MEETING

...is to Discuss the Need and Present the Proposed Alternatives for US-281 Over the Washita River and Overflows in Caddo County

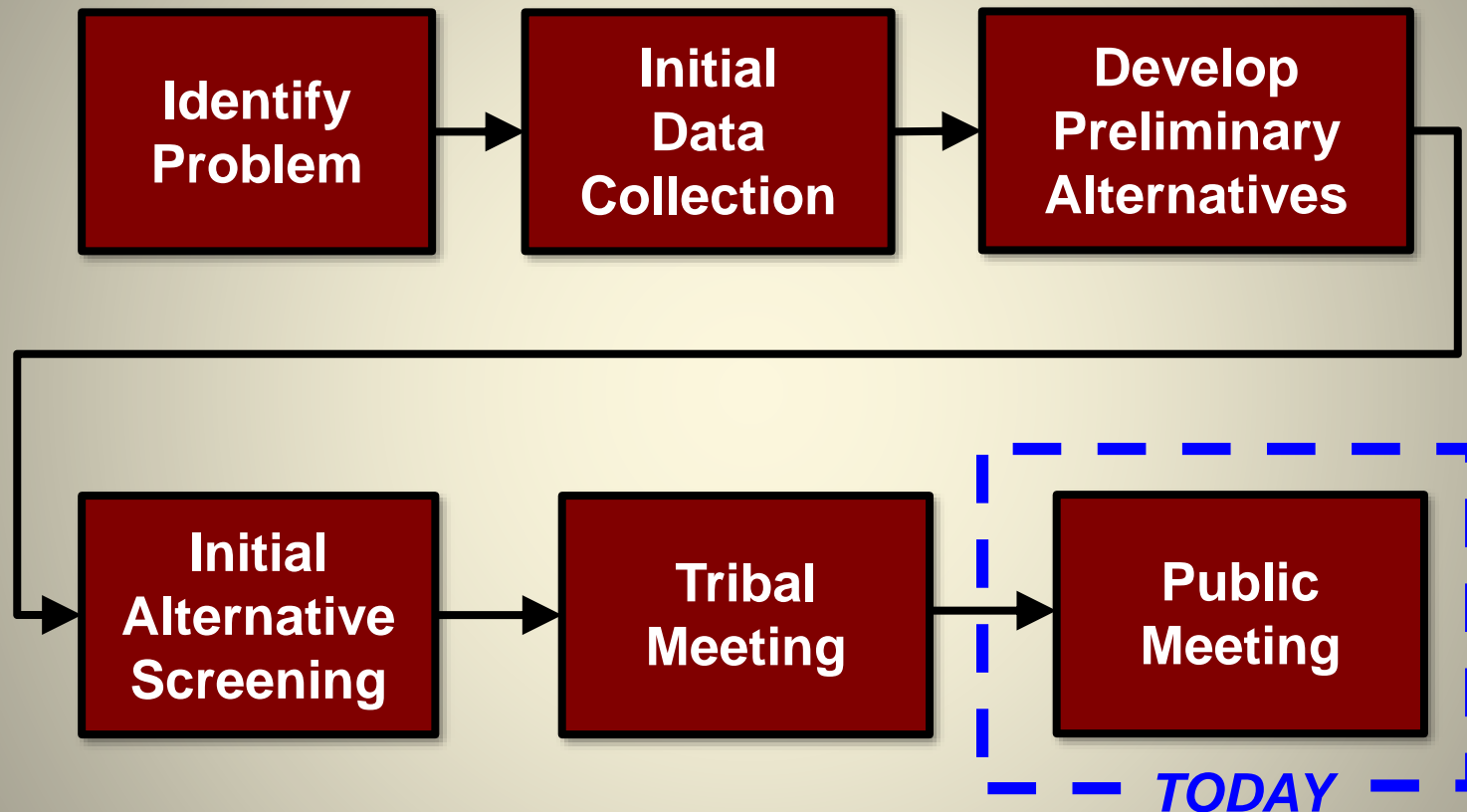


PURPOSE OF THE PROJECT

...is to Correct the At-Risk Bridge on US-281 Over the Washita River and the Structurally Deficient Overflow Bridges, and Improve Traffic Operations on the Roadway



PROJECT DEVELOPMENT PROCESS

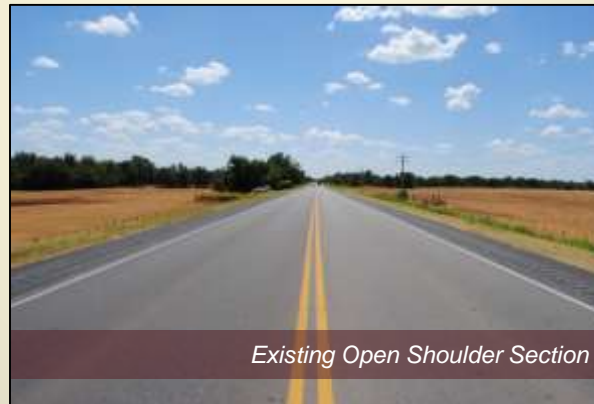


- Purpose of this Meeting is to Gather Public Input on Project Constraints and Alternatives

PROJECT AREA INFORMATION

General Data

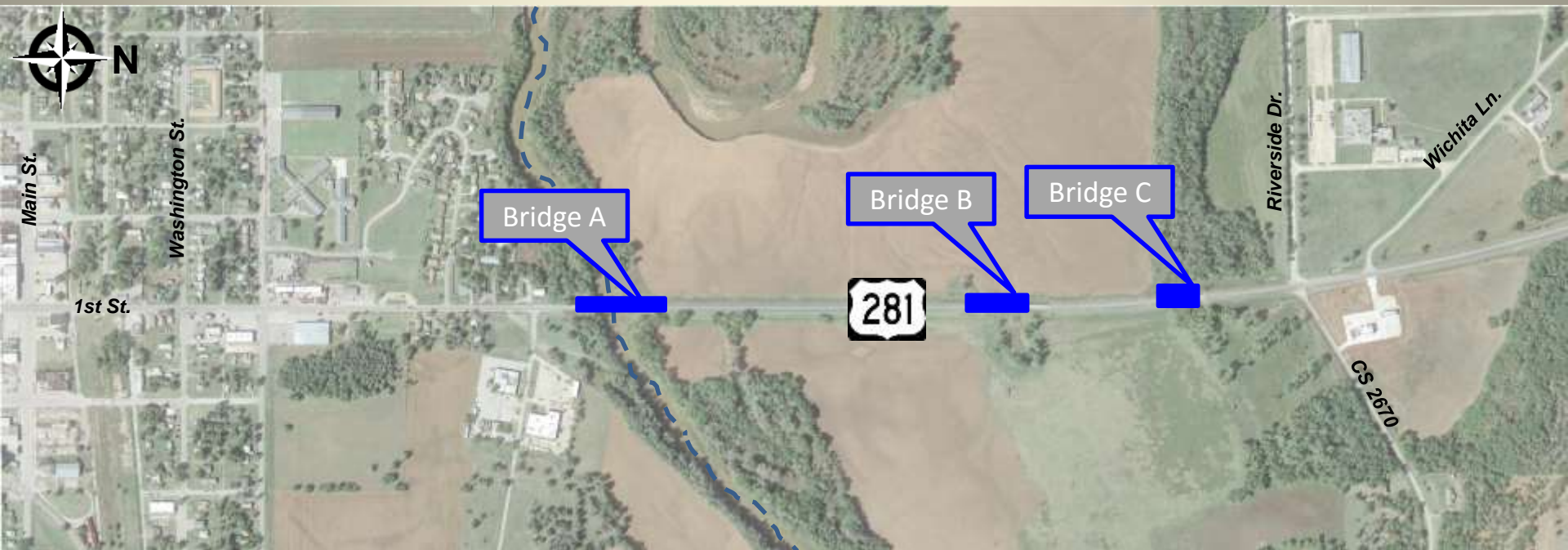
- Speed Limit Varies From 35 mph to 65 mph
- 2-Lane Roadway (Closed and Open Section)
- 3 Bridge Structure (Washita River and 2 Overflows)
- Existing Traffic (2015): 7,460 Vehicles / Day
- Projected Traffic (2040): 10,890 Vehicles / Day



PROJECT AREA INFORMATION

General Data

- Speed Limit Varies From 35 mph to 65 mph
- 2-Lane Roadway (Closed and Open Section)
- 3 Bridge Structures (Washita River and 2 Overflows)
- Existing Traffic (2015): 7,460 Vehicles / Day
- Projected Traffic (2040): 10,890 Vehicles / Day



PROJECT AREA INFORMATION

General Data

- Speed Limit Varies From 35 mph to 65 mph
- 2-Lane Roadway (Closed and Open Section)
- 3 Bridge Structure (Washita and 2 Overflow's)
- Existing Traffic (2015): 7,460 Vehicles / Day
- Projected Traffic (2040): 10,890 Vehicles / Day

Collision Data

- Total: 57 Documented Accidents (2005-2016)
 - 34 Personal Property Damage
 - 22 Injuries (2 incapacitating)
 - 1 Fatality
- **The Accident Rate on US-281 is Nearly Three Times the State Average** for Collisions on Similar Facilities



COLLISION DATA

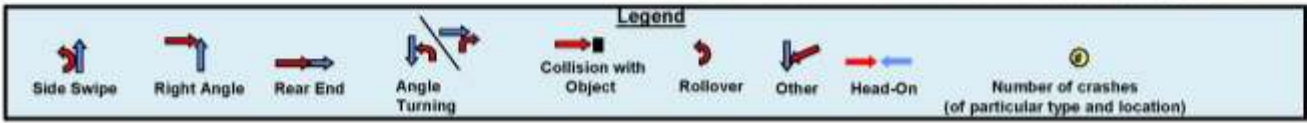


US 281 over Washita River
Crashes on US 281
2005-2016

Figure 8



COLLISION DATA



US 281 over Washita River
Crashes on US 281
2005-2016

Figure 9



EXISTING CONDITIONS

WARRANT IMPROVEMENT

■ Roadway Deficiencies

- Narrow Shoulders
- Roadway Geometry
 - Horizontal and Vertical Curves are Adequate
- Limited Sight Distance at Kansas Avenue
- Lack of Access Control at Washington Street
- Lack of Pedestrian Access and Control



EXISTING CONDITIONS

WARRANT IMPROVEMENT

■ Roadway Deficiencies

- Narrow Shoulders
- Roadway Geometry
 - Horizontal and Vertical Curves are Adequate
- Limited Sight Distance at Kansas Avenue
- Lack of Access Control at Washington Street
- Lack of Pedestrian Access and Control



EXISTING CONDITIONS

WARRANT IMPROVEMENT

■ Roadway Deficiencies

- Narrow Shoulders
- Roadway Geometry
 - Horizontal and Vertical Curves are Adequate
- Limited Sight Distance at Kansas Avenue
- Lack of Access Control at Washington Street
- Lack of Pedestrian Access and Control



EXISTING CONDITIONS

WARRANT IMPROVEMENT

■ Roadway Deficiencies

- Narrow Shoulders
- Roadway Geometry
 - Horizontal and Vertical Curves are Adequate
- Limited Sight Distance at Kansas Avenue
- Lack of Access Control at Washington Street
- Lack of Pedestrian Access and Control

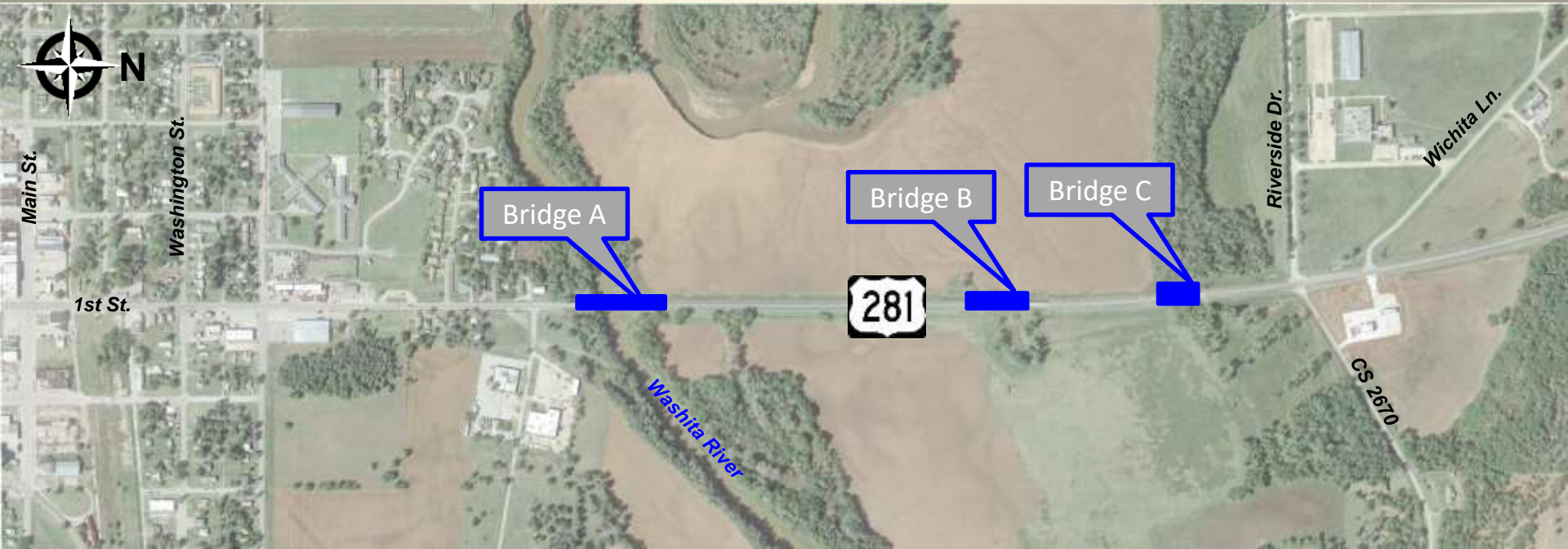
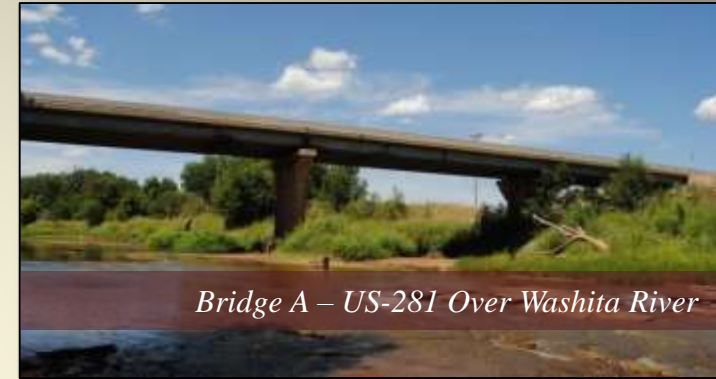


EXISTING CONDITIONS

WARRANT IMPROVEMENT

Bridge Deficiencies

- Three Bridge Structures Constructed in 1958
 - Bridge A – US-281 Over Washita River
 - Bridge B – Washita River Overflow 1
 - Bridge C – Washita River Overflow 2
- Clear Roadway Width is 28 Feet
- Scourability and Restricted Channel Flow
- Bridges are “At-Risk” & “Structurally Deficient”
 - Deck, Superstructure and Substructure

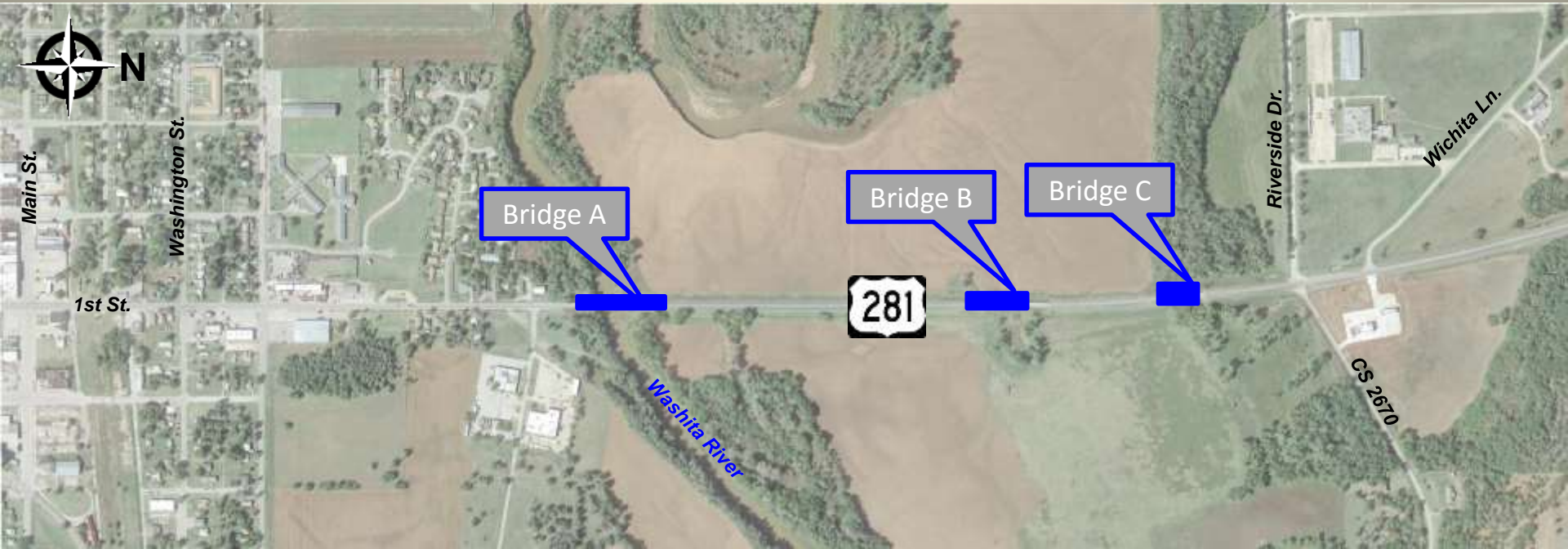


EXISTING CONDITIONS

WARRANT IMPROVEMENT

Bridge Deficiencies

- Three Bridge Structures Constructed in 1958
 - Bridge A – US-281 Over Washita River
 - Bridge B – Washita River Overflow 1
 - Bridge C – Washita River Overflow 2
- Clear Roadway Width is 28 Feet
- Scourability and Restricted Channel Flow
- Bridges are “At-Risk” & “Structurally Deficient”
 - Deck, Superstructure and Substructure

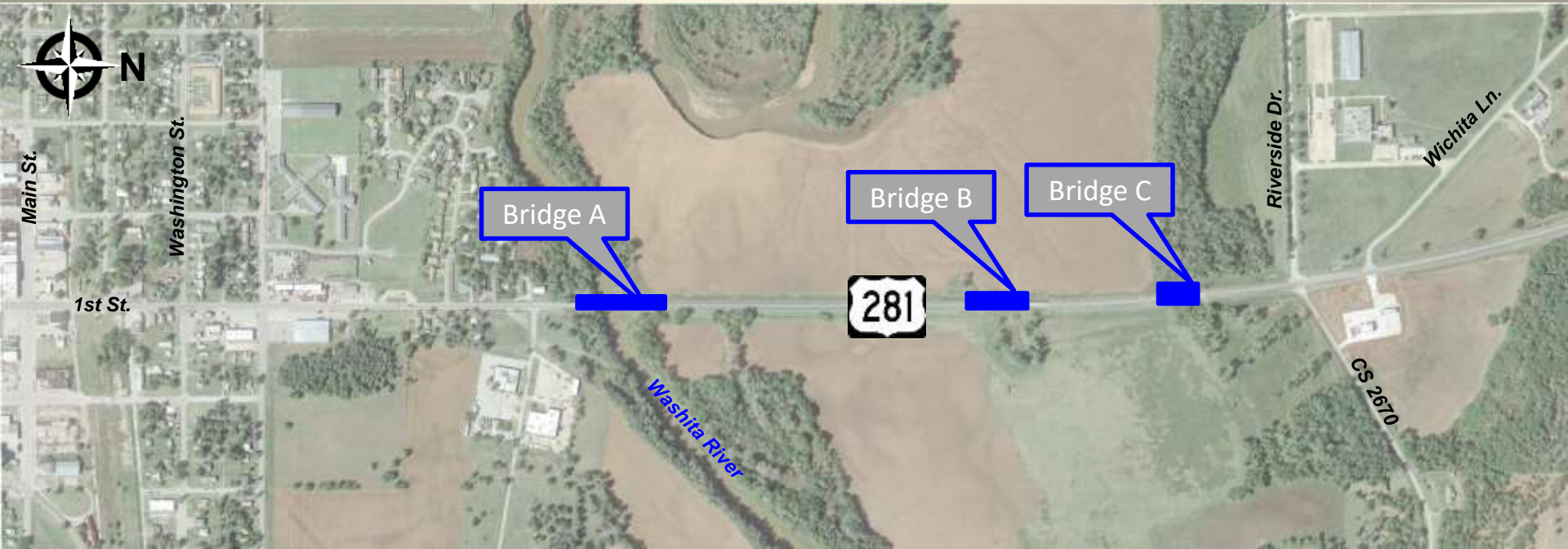
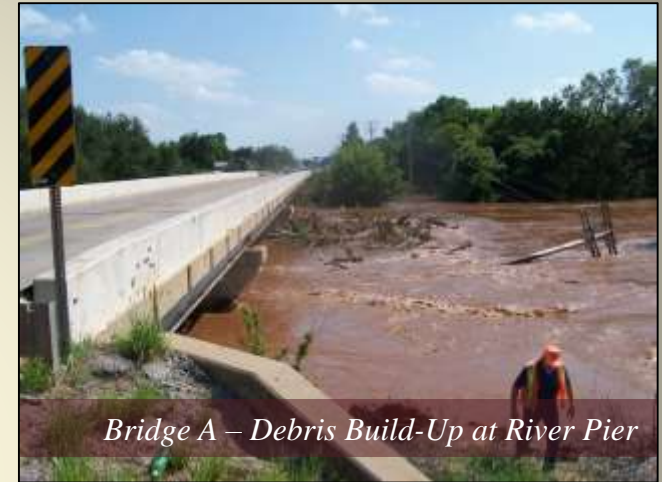


EXISTING CONDITIONS

WARRANT IMPROVEMENT

Bridge Deficiencies

- Three Bridge Structures Constructed in 1958
 - Bridge A – US-281 Over Washita River
 - Bridge B – Washita River Overflow 1
 - Bridge C – Washita River Overflow 2
- Clear Roadway Width is 28 Feet
- Scourability and Restricted Channel Flow
- Bridges are “At-Risk” & “Structurally Deficient”
 - Deck, Superstructure and Substructure

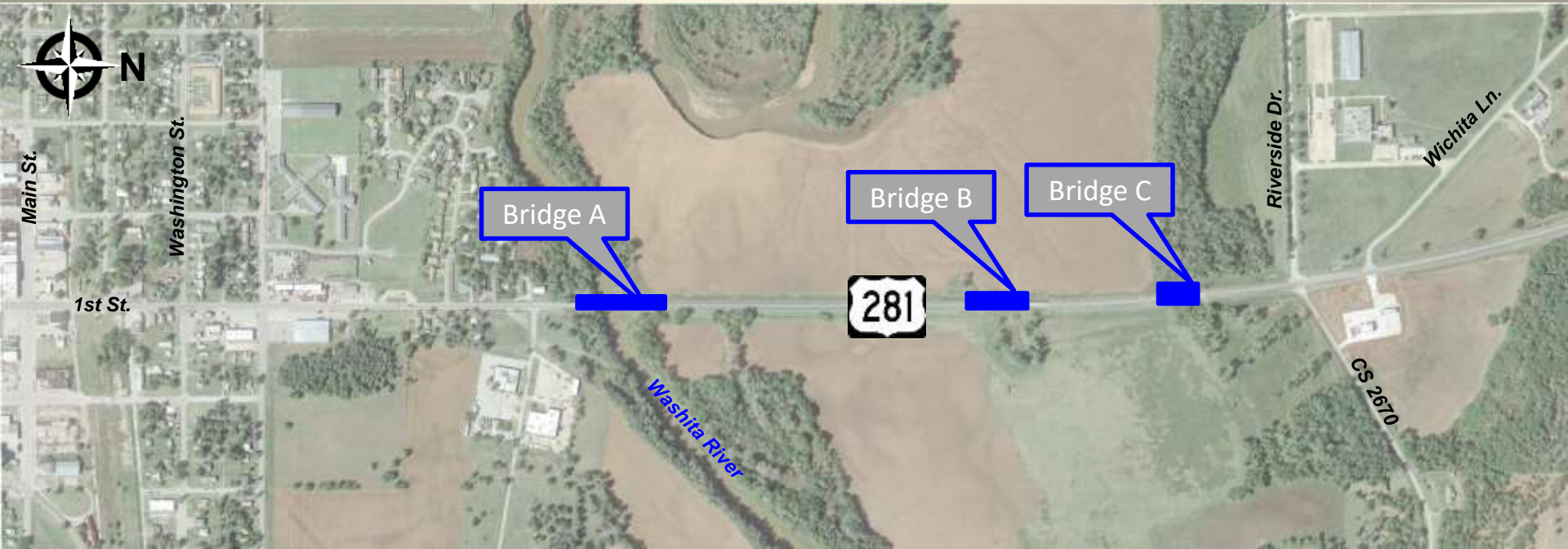
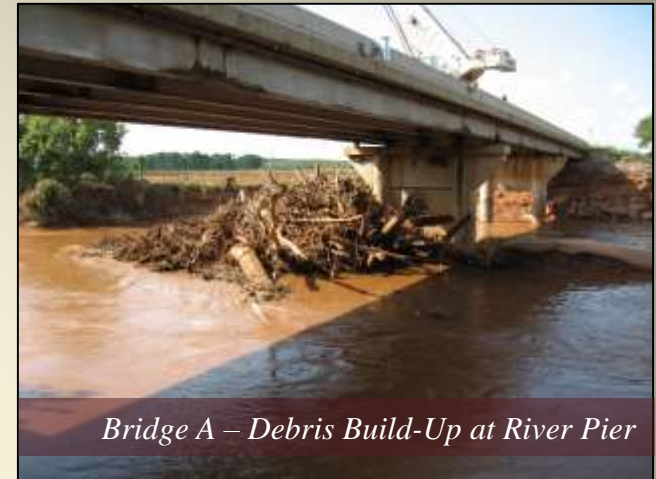


EXISTING CONDITIONS

WARRANT IMPROVEMENT

Bridge Deficiencies

- Three Bridge Structures Constructed in 1958
 - Bridge A – US-281 Over Washita River
 - Bridge B – Washita River Overflow 1
 - Bridge C – Washita River Overflow 2
- Clear Roadway Width is 28 Feet
- Scourability and Restricted Channel Flow
- Bridges are “At-Risk” & “Structurally Deficient”
 - Deck, Superstructure and Substructure



An aerial photograph of a river winding through a lush, green forest. The river is brownish, suggesting sediment or tannins. The banks are covered in dense trees and tall grasses. The sky is clear and blue. The text 'PROJECT AREA CONSTRAINTS' is overlaid in large, white, bold letters with a black outline, centered over the river.

PROJECT AREA CONSTRAINTS

PROJECT CONSTRAINTS


- **Data Collection Area**


- Encompassed all Alternatives
- Database Research and Field Reconnaissance




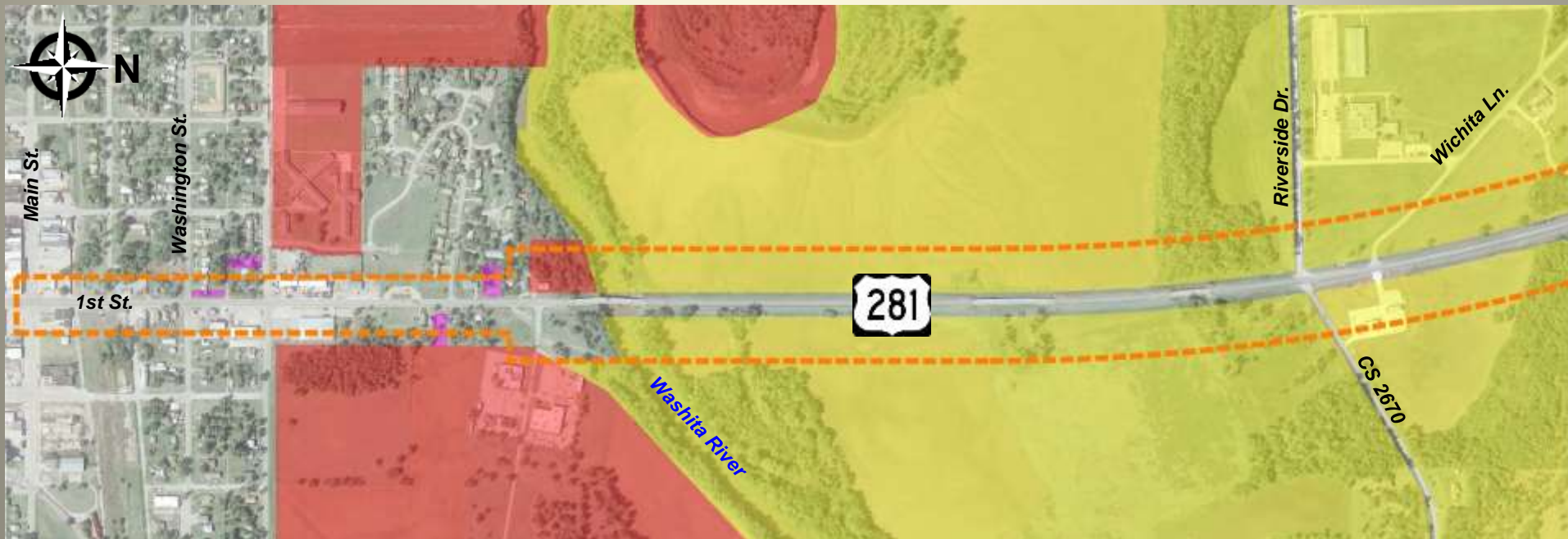
PROJECT CONSTRAINTS

■ Tribal Properties

 Kiowa, Comanche, and Apache Tribes (KCA) - South of River

 Wichita, Caddo, and Delaware Tribes (WCD) – North of River

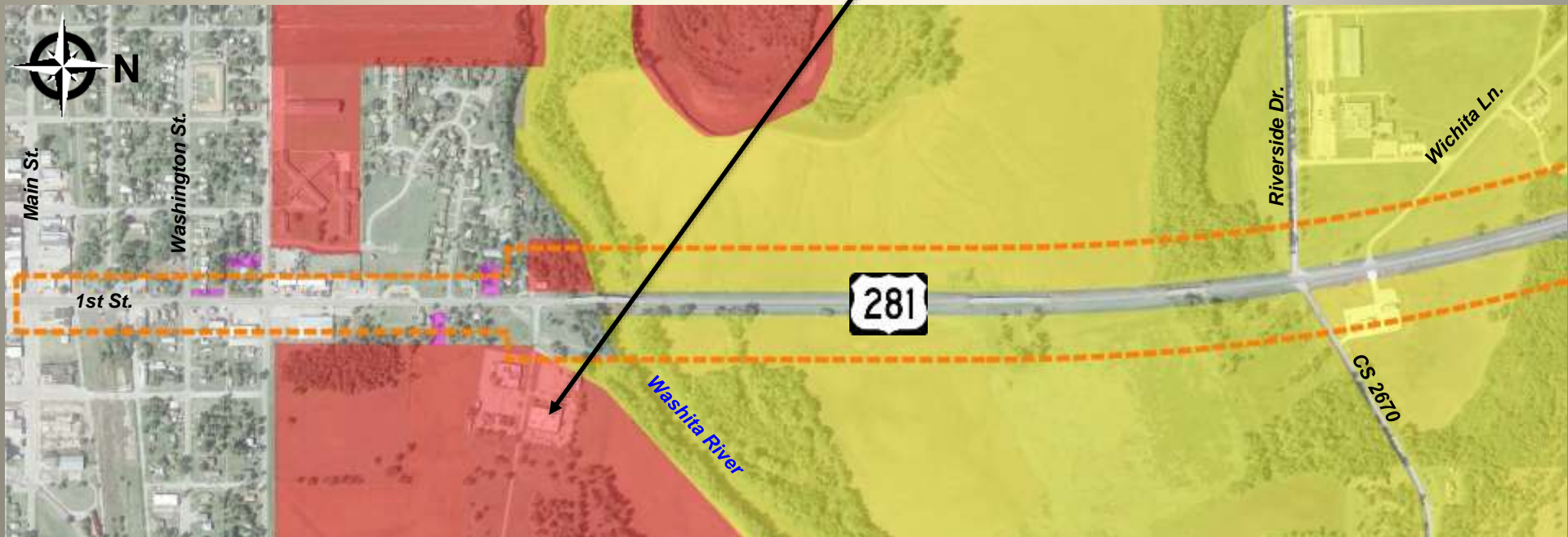
 Housing Authority of Apache Tribe



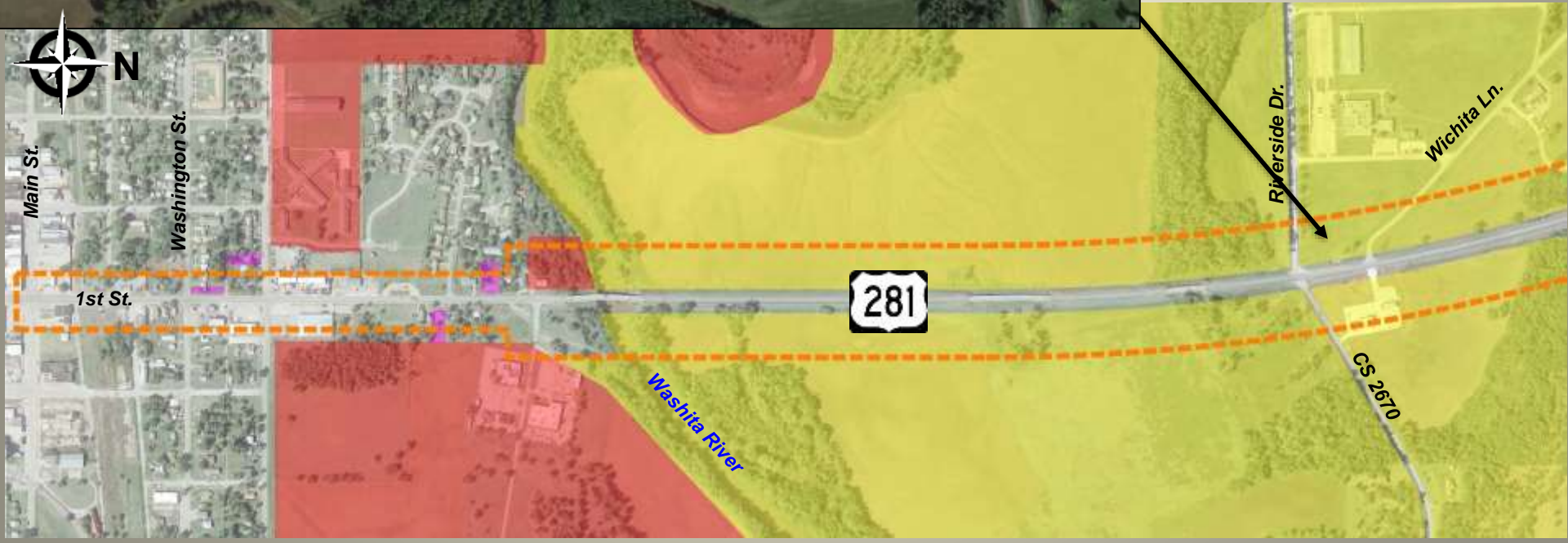
PROJECT CONSTRAINTS

- **Tribal Facilities**

- Indian Health Center
- BIA Southern Plains Regional Office
- Riverside Indian School
- Wichita Travel Plaza
- Future Tribal Complex



PROJECT CONSTRAINTS



PROJECT CONSTRAINTS

■ Homes and Businesses

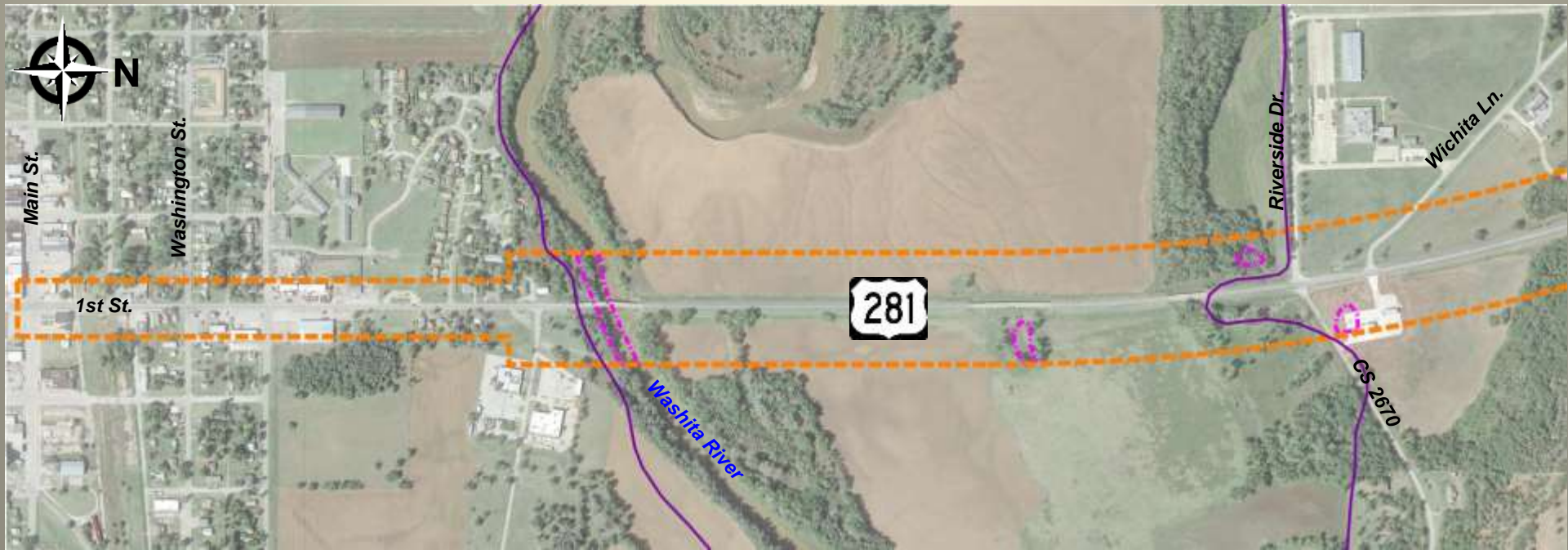
- Residences
- Gas Stations
- Auto Sales
- Retail



PROJECT CONSTRAINTS

- **Washita River Floodplain**

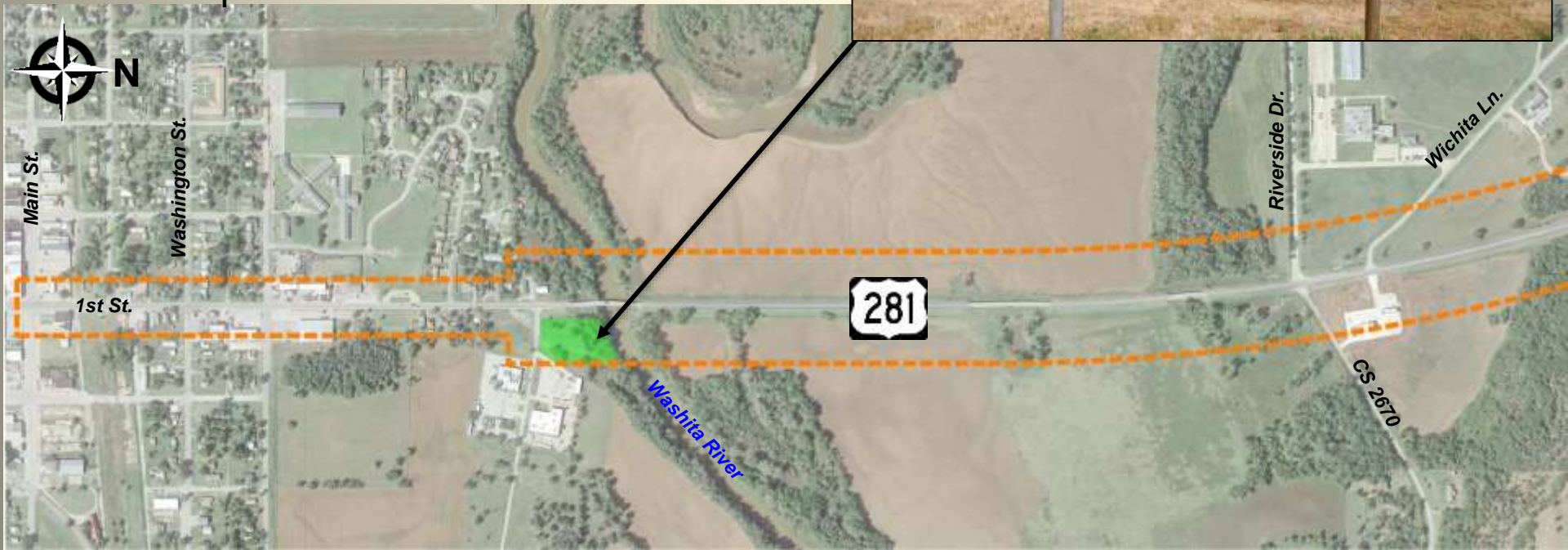
- Drainage Patterns of Washita River and Overflows an Important Consideration
- Minimize any Changes to Drainage Patterns so as Not to Increase Flooding
- Small Wetland Areas



PROJECT CONSTRAINTS

■ Anadarko Mini-Park

- City of Anadarko Received Land and Water Conservation Fund Money in the Late 1970s
- Properties With LWCF Funding are Protected
- Area No Longer Used as Park but Additional Coordination May be Required



PROJECT CONSTRAINTS

- **Downtown Anadarko Historic District**
 - South of old RR (Between Market and Main Streets)
 - Will not be Affected



PROJECT CONSTRAINTS

- **Potential Hazardous Materials Sites**
 - Several Gas Stations With Underground Storage Tanks
 - Underground Storage Tank Registered at Riverside Indian School – Exact Location Unknown





WASHITA
RIVER

**DEVELOPMENT
OF
ALTERNATIVES**

DEVELOPMENT OF PRELIMINARY ALTERNATIVES

- Designed to Correct the Existing Deficiencies With Consideration to Constraints Identified
- Alternatives are Same at South and North Matching Existing Highway Centerline, but Differ at the Washita River
- Considered 5 Alternatives
 - 2 – Offset to West of Existing Washita Bridge
 - 2 – Offset to East of Existing Washita Bridge
 - 1 – On-Existing Alignment



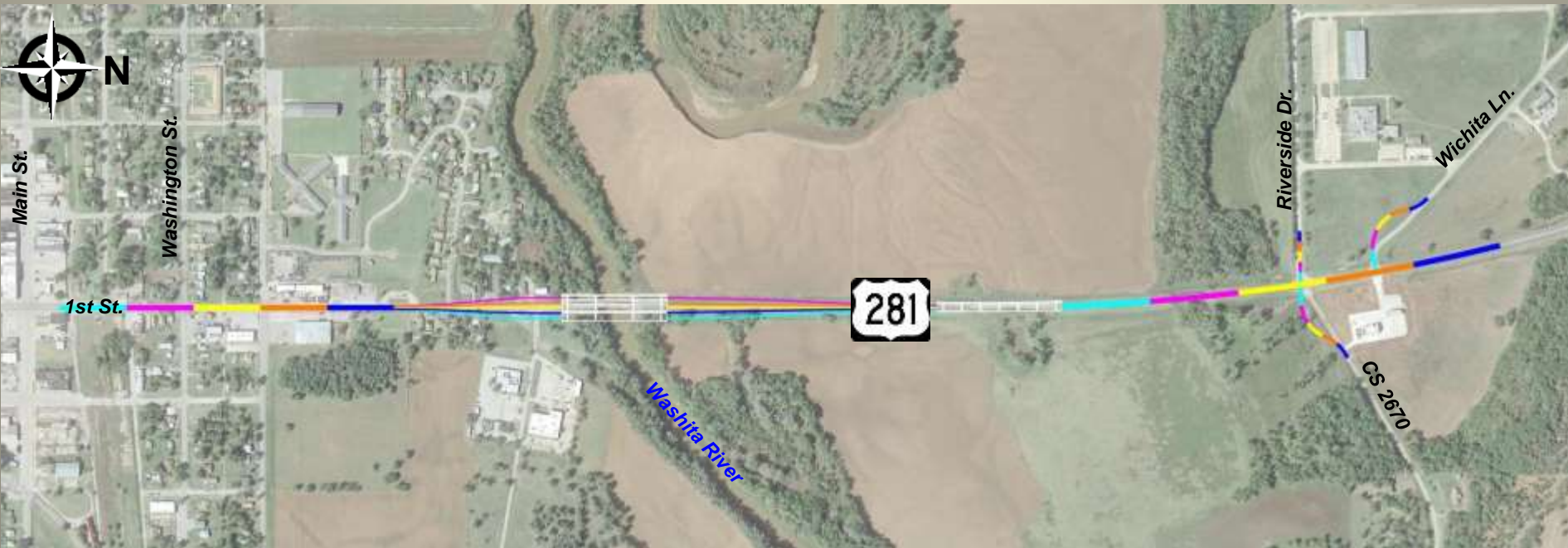
DEVELOPMENT OF PRELIMINARY ALTERNATIVES

- Designed to Correct the Existing Deficiencies With Consideration to Constraints Identified
- Alternatives are Same at South and North Matching Existing Highway Centerline, but Differ at the Washita River
- Considered 5 Alternatives
 - 2 – Offset to West of Existing Washita Bridge
 - 2 – Offset to East of Existing Washita Bridge
 - 1 – On-Existing Alignment



DEVELOPMENT OF PRELIMINARY ALTERNATIVES

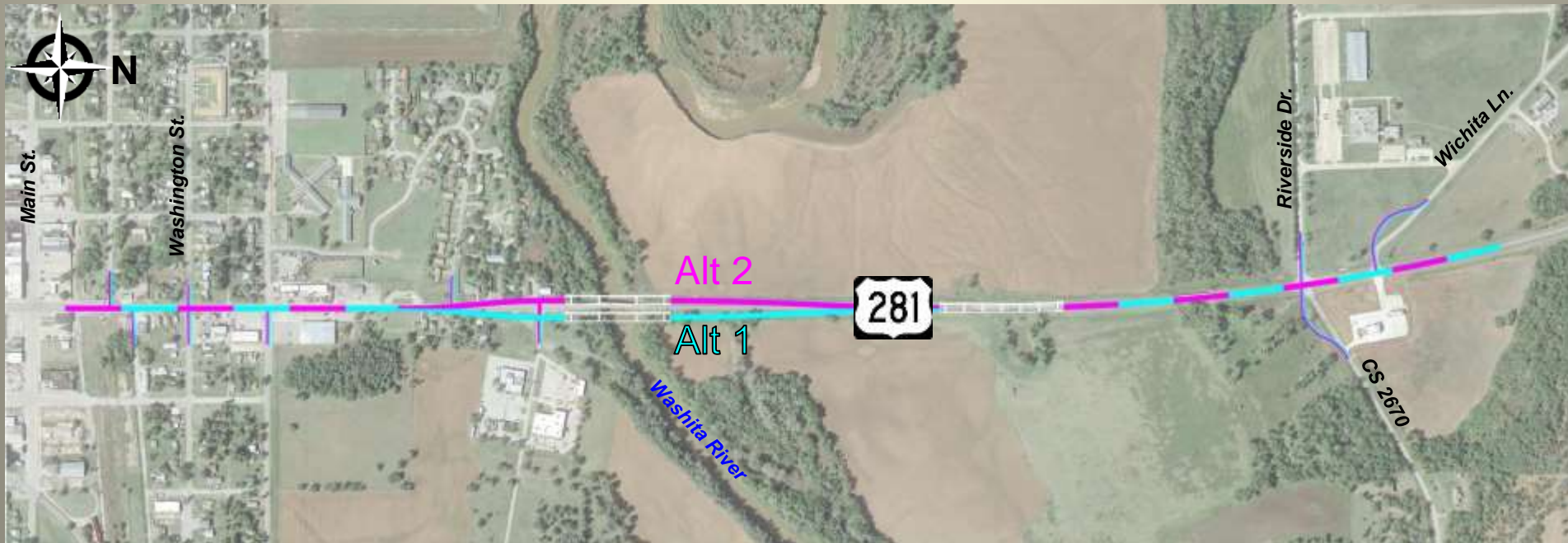
- Meeting was Held With ODOT to Discuss the 5 Preliminary Alternatives
- 3 Alternatives Were Eliminated That:
 - Required Multiple Stages for Construction of Bridges
 - Required Construction of Wider Bridge for Temporary Traffic
 - Required Construction of Temporary Bridge
- Eliminated Alternatives had Similar Impacts to Current Alternatives



CURRENT ALTERNATIVES OVERVIEW

Alternatives are Same at the South and North matching Existing Highway Centerline, but Differ at the Washita River

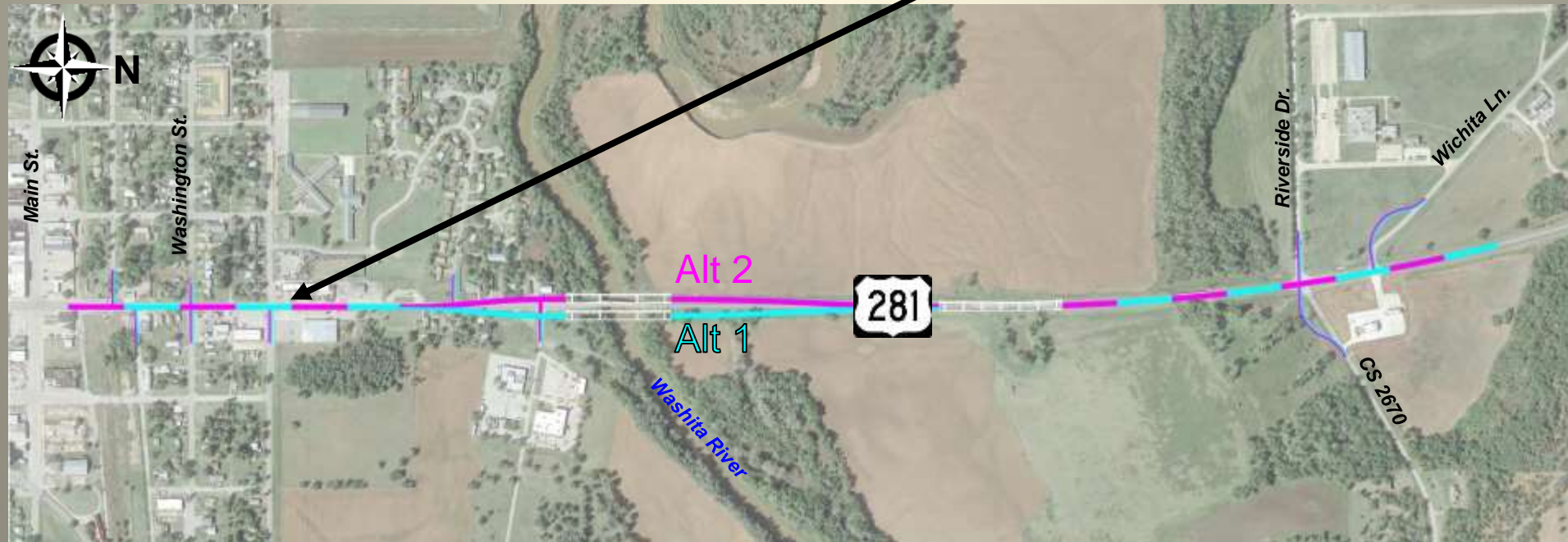
- **Alternative 1 – Full Eastern Offset**
 - At Washita River, new Roadway Offset 48 Feet East of Existing Highway Centerline
- **Alternative 2 – Full Western Offset**
 - At Washita River, new Roadway Offset 42 Feet West of Existing Highway Centerline



CURRENT ALTERNATIVES OVERVIEW

Alternatives are Same at the South and North matching Existing Highway Centerline, but Differ at the Washita River

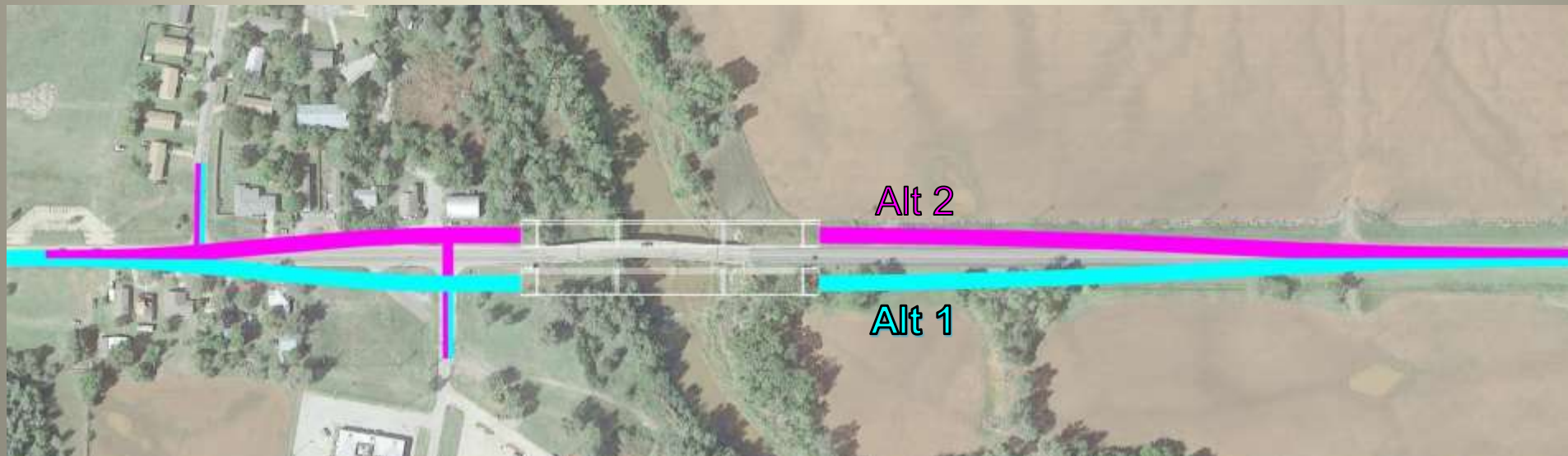
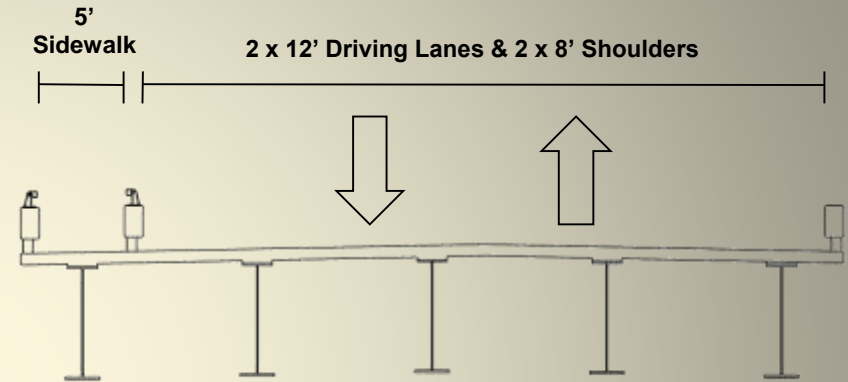
- **Alternative 1 – Full Eastern Offset**
 - At Washita River, new Roadway Offset 48 Feet East of Existing Highway Centerline
- **Alternative 2 – Full Western Offset**
 - At Washita River, new Roadway Offset 42 Feet West of Existing Highway Centerline



CURRENT ALTERNATIVES OVERVIEW

Alternatives are Same at the South and North matching Existing Highway Centerline, but Differ at the Washita River

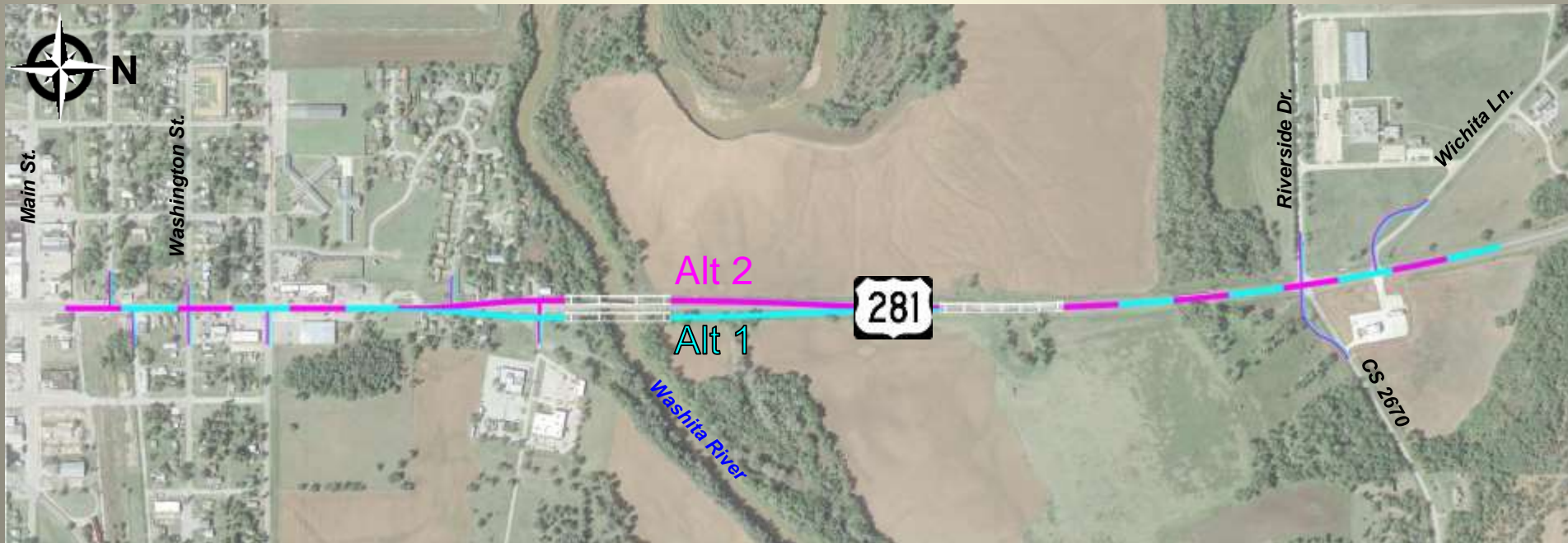
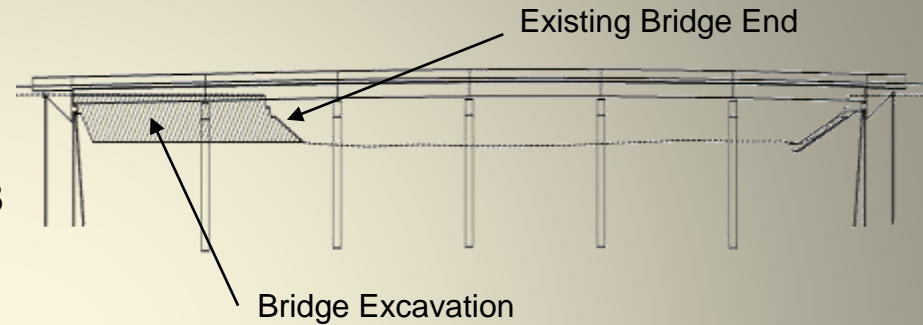
- **Alternative 1 – Full Eastern Offset**
 - At Washita River, new Roadway Offset 48 Feet East of Existing Highway Centerline
- **Alternative 2 – Full Western Offset**
 - At Washita River, new Roadway Offset 42 Feet West of Existing Highway Centerline



CURRENT ALTERNATIVES OVERVIEW

Alternatives are Same at the South and North matching Existing Highway Centerline, but Differ at the Washita River

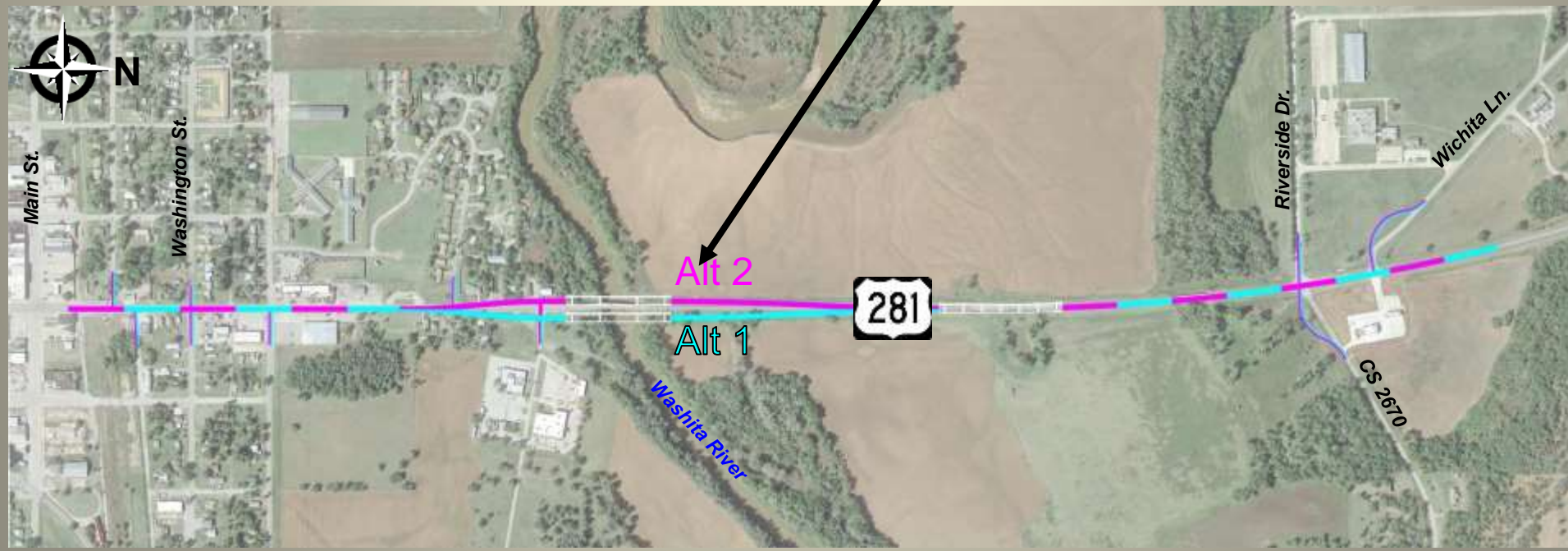
- **Alternative 1 – Full Eastern Offset**
 - At Washita River, new Roadway Offset 48 Feet East of Existing Highway Centerline
- **Alternative 2 – Full Western Offset**
 - At Washita River, new Roadway Offset 42 Feet West of Existing Highway Centerline



CURRENT ALTERNATIVES OVERVIEW

Alternatives are Same at the South and North matching Existing Highway Centerline, but Differ at the Washita River

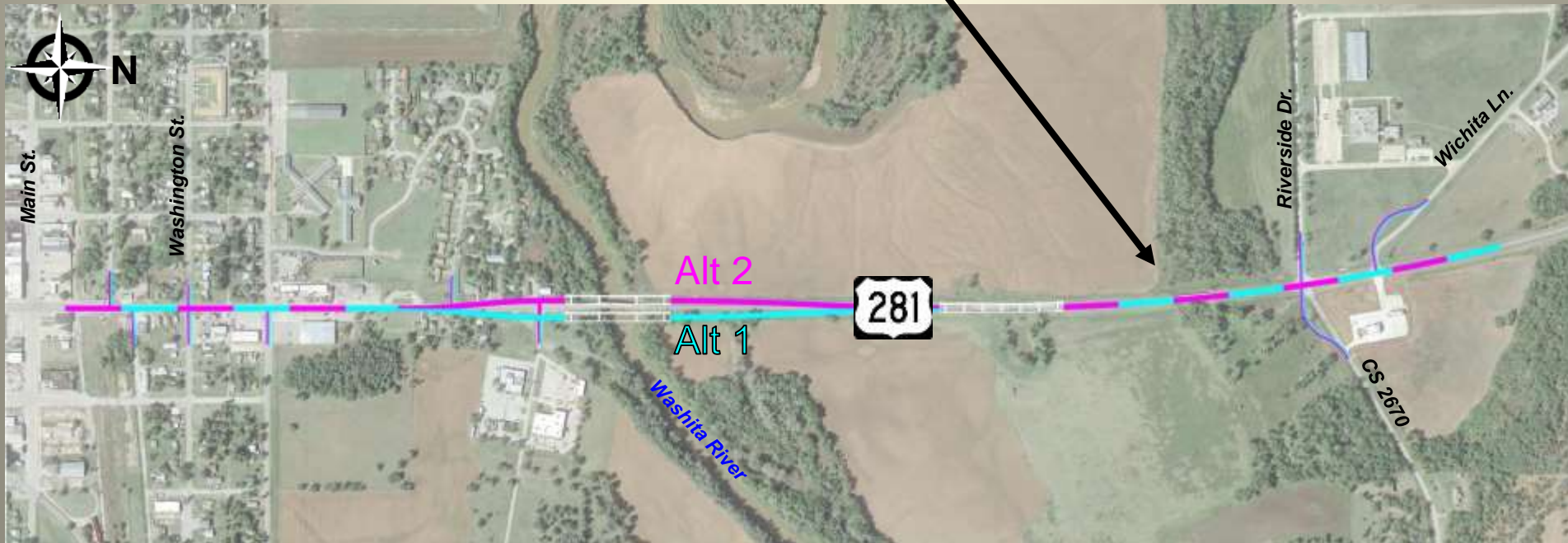
- **Alternative 1 – Full Eastern Offset**
 - At Washita River, new Roadway Offset 48 Feet East of Existing Highway Centerline
- **Alternative 2 – Full Western Offset**
 - At Washita River, new Roadway Offset 42 Feet West of Existing Highway Centerline



CURRENT ALTERNATIVES OVERVIEW

Alternatives are Same at the South and North matching Existing Highway Centerline, but Differ at the Washita River

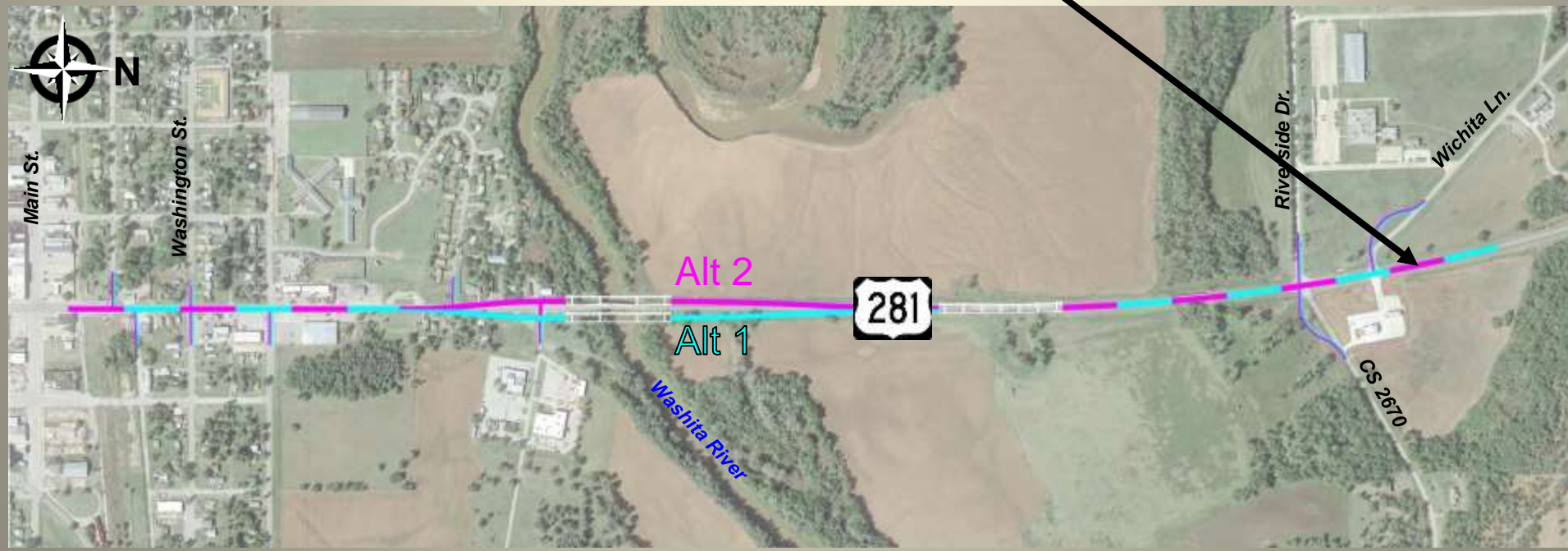
- **Alternative 1 – Full Eastern Offset**
 - At Washita River, new Roadway Offset 48 Feet East of Existing Highway Centerline
- **Alternative 2 – Full Western Offset**
 - At Washita River, new Roadway Offset 42 Feet West of Existing Highway Centerline



CURRENT ALTERNATIVES OVERVIEW

Alternatives are Same at the South and North matching Existing Highway Centerline, but Differ at the Washita River

- **Alternative 1 – Full Eastern Offset**
 - At Washita River, new Roadway Offset 48 Feet East of Existing Highway Centerline
- **Alternative 2 – Full Western Offset**
 - At Washita River, new Roadway Offset 42 Feet West of Existing Highway Centerline

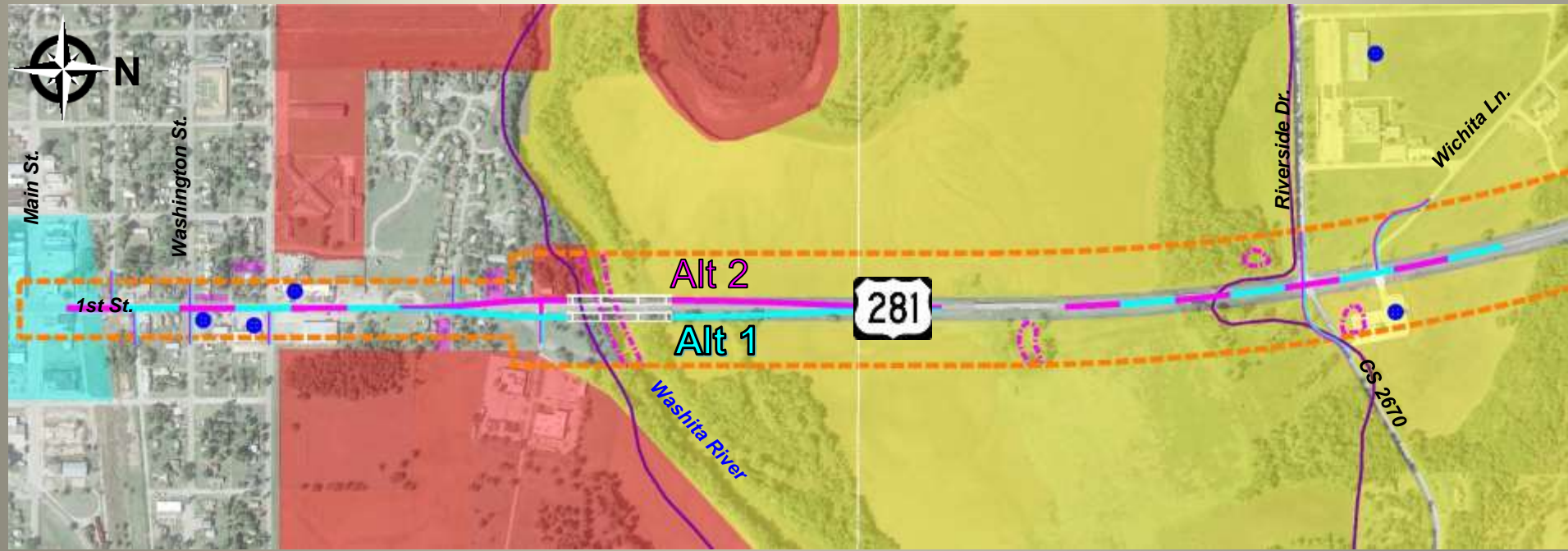




COMPARISON OF ALTERNATIVES

COMPARISON OF ALTERNATIVES

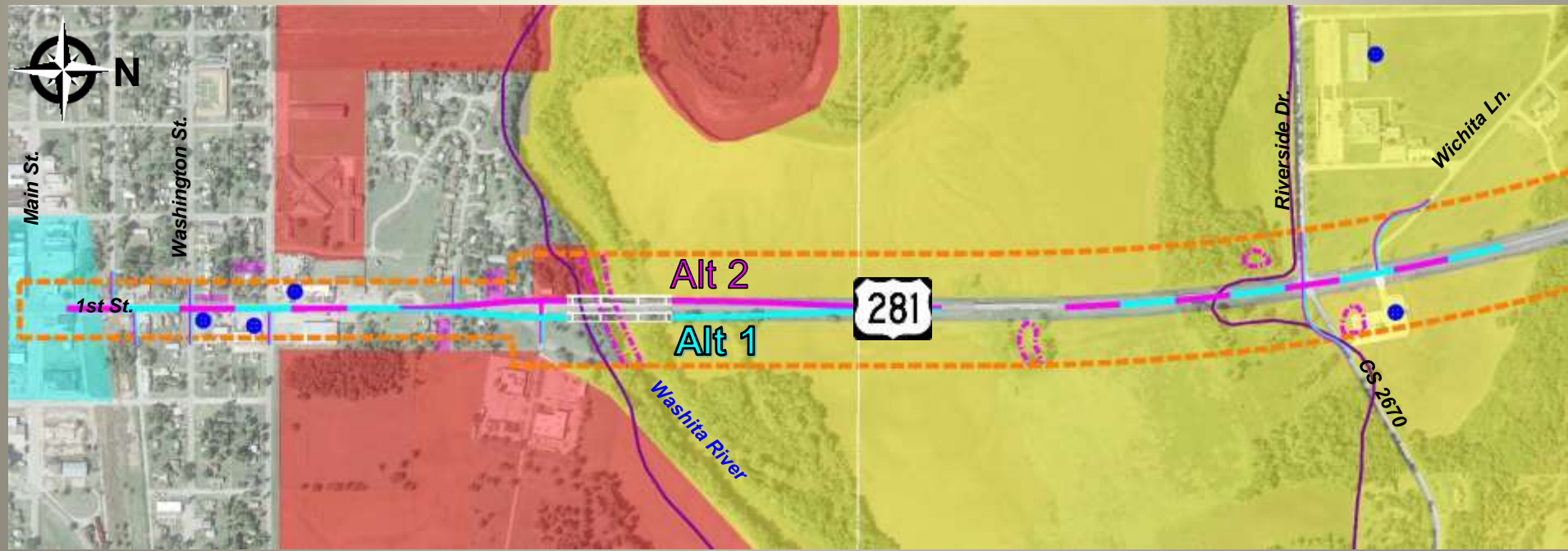
- **Compare the Impacts of the Various Options**
 - Overlay Each Option and Tabulate Impacts
 - Develop a Relative Means of Comparison



COMPARISON OF ALTERNATIVES

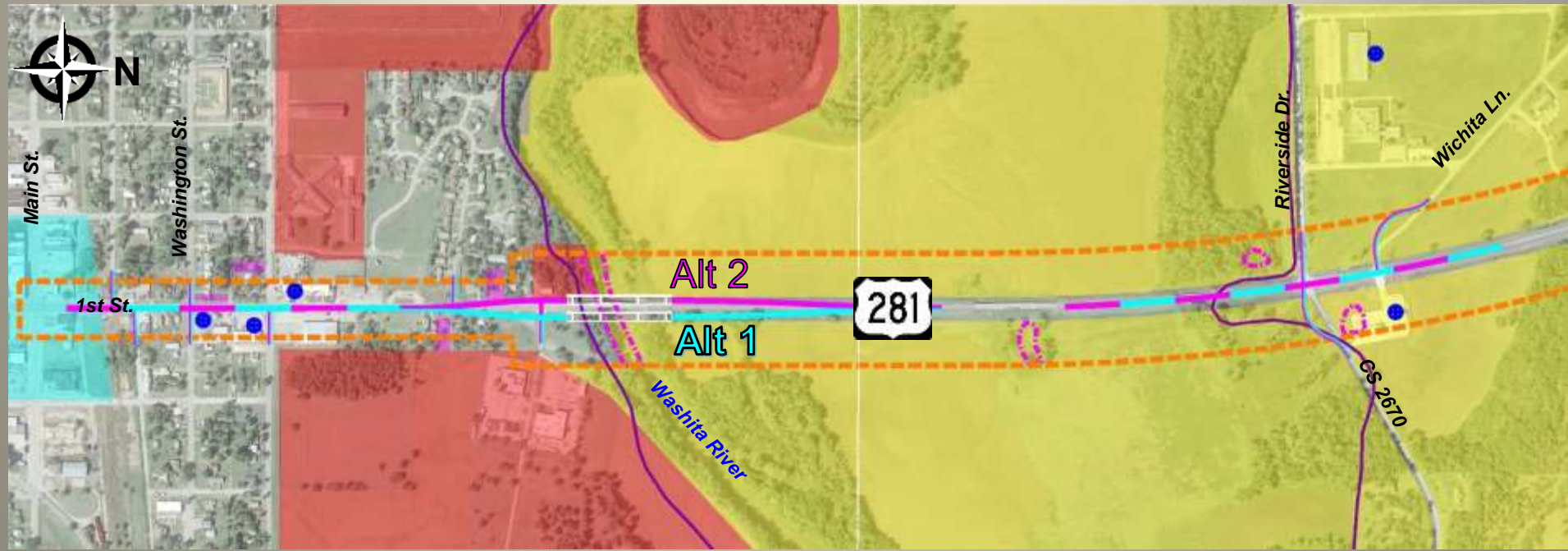
■ Evaluation Criteria

- Impacts to Tribal & Private Property
- Impacts to Homes & Businesses
- Impacts to Environmental Resources
- Constructability and Maintenance of Traffic During Construction
- Cost – Construction, Right-of-Way, Utilities
- Tribal and Public Input



IMPACTS

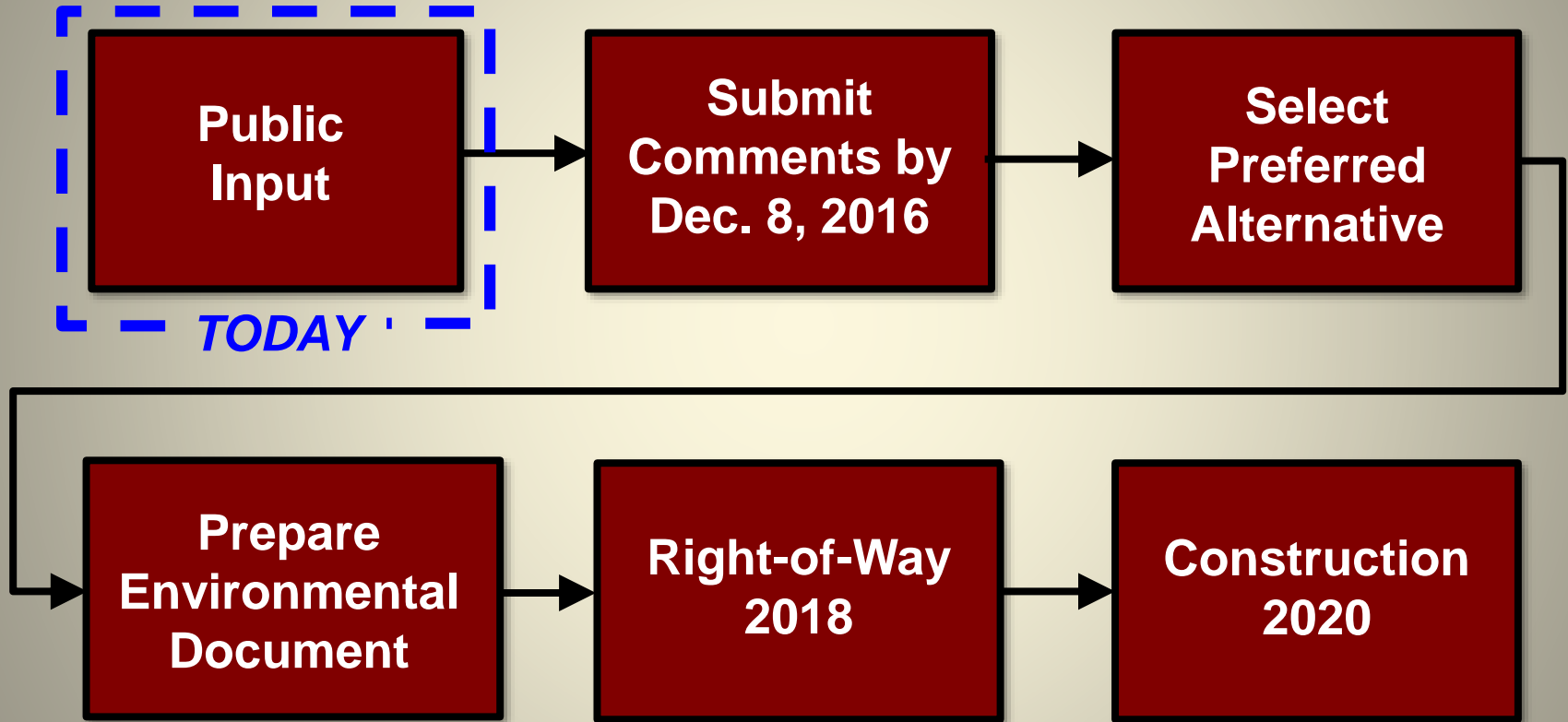
JP No. 29574(04) US-281 over the Washita River, Caddo County Project Matrix						
Alternative	Total Cost	Residential Relocations	Commercial Relocations	Wetlands (acre)	Cultural Resources	Park Property (acre)
1 EAST OFFSET	\$17.5 M	4 (1 tribal)	0	0.1	0	0.5
2 WEST OFFSET	\$17.7 M	8 (3 tribal)	1	0.1	0	0



A photograph of a concrete bridge spanning a river. The bridge has several large concrete piers supporting the deck. The water in the river is a muddy brown color. The foreground is filled with tall grasses and rocks. The sky is blue with some white clouds. The text "NEXT STEPS" is overlaid in the center of the image in a bold, white, sans-serif font with a black outline.

NEXT STEPS

NEXT PROJECT STEPS



THANK YOU!

**Please Submit Your Comments by
December 8, 2016**

- ✓ **Leave Your Comment Form Here Today**
- ✓ **Mail the Comment Form Back to ODOT:**
Environmental Programs Division
200 NE 21st Street
Oklahoma City, OK 73105
- ✓ **Email Your Comments to ODOT-Environment@ODOT.ORG**
- ✓ **Submit on the Web at www.odot.org/publicmeetings**

QUESTIONS?