



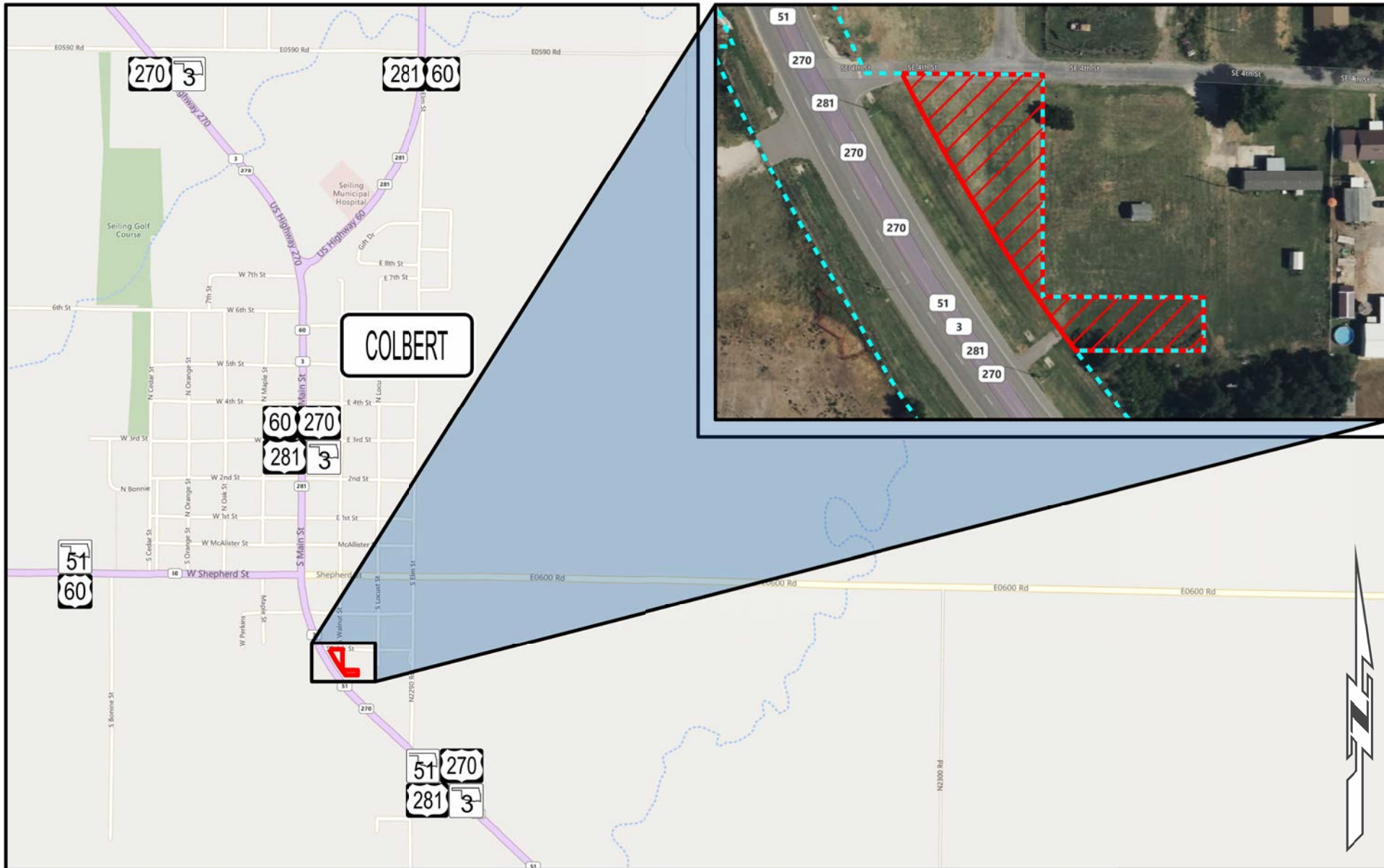
Limits of No Access
Existing Right-of-Way
Requested Area
Easement


OKLAHOMA
 Transportation

SURPLUS LOCATION MAP

SH-3 / US-270 | 17671(07) | Dewey County

Part of Parcel(s):	29
Price:	\$19,185.00
Size:	≈ 0.49 acres (21,316.72 sq. ft.)



Limits of No Access
Existing Right-of-Way
Requested Area
Easement


OKLAHOMA
 Transportation

SURPLUS LOCATION MAP

SH-3 / US-270 | 17671(07) | Dewey County

Part of Parcel(s):	29
Price:	\$19,185.00
Size:	≈ 0.49 acres (21,316.72 sq. ft.)