

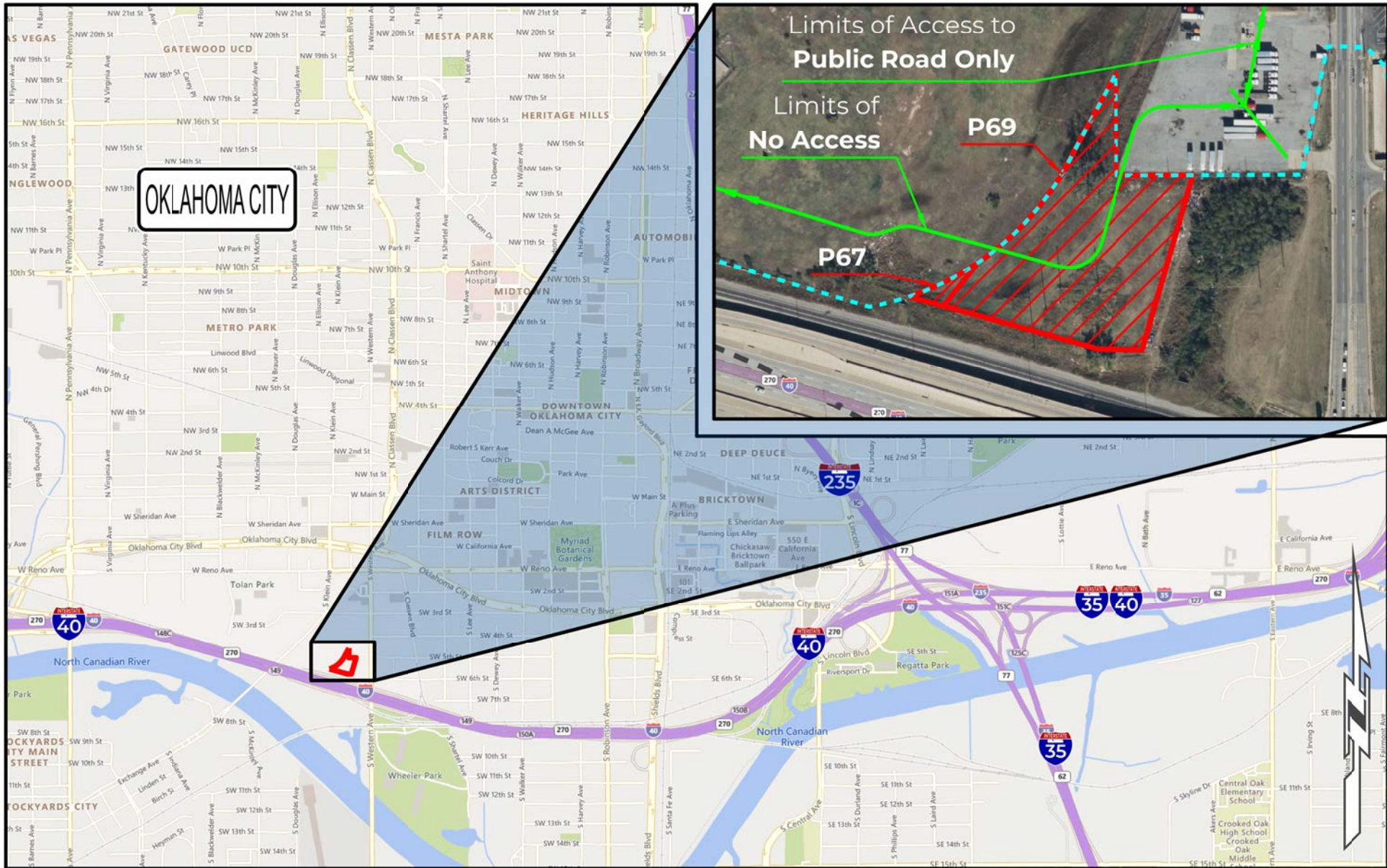
Limits of No Access
Existing Right-of-Way
Requested Area
Easement


OKLAHOMA
 Transportation

SURPLUS LOCATION MAP

I-40 | 17430(04) | Oklahoma County

Part of Parcel(s):	67 & 69
Price:	\$238,600.00
Size:	≈ 1.96 ac. (85,215.03 sq. ft.)



Limits of No Access
Existing Right-of-Way
Requested Area
Easement


OKLAHOMA
 Transportation

SURPLUS LOCATION MAP

I-40 | 17430(04) | Oklahoma County

Part of Parcel(s):	67 & 69
Price:	\$238,600.00
Size:	≈ 1.96 ac. (85,215.03 sq. ft.)