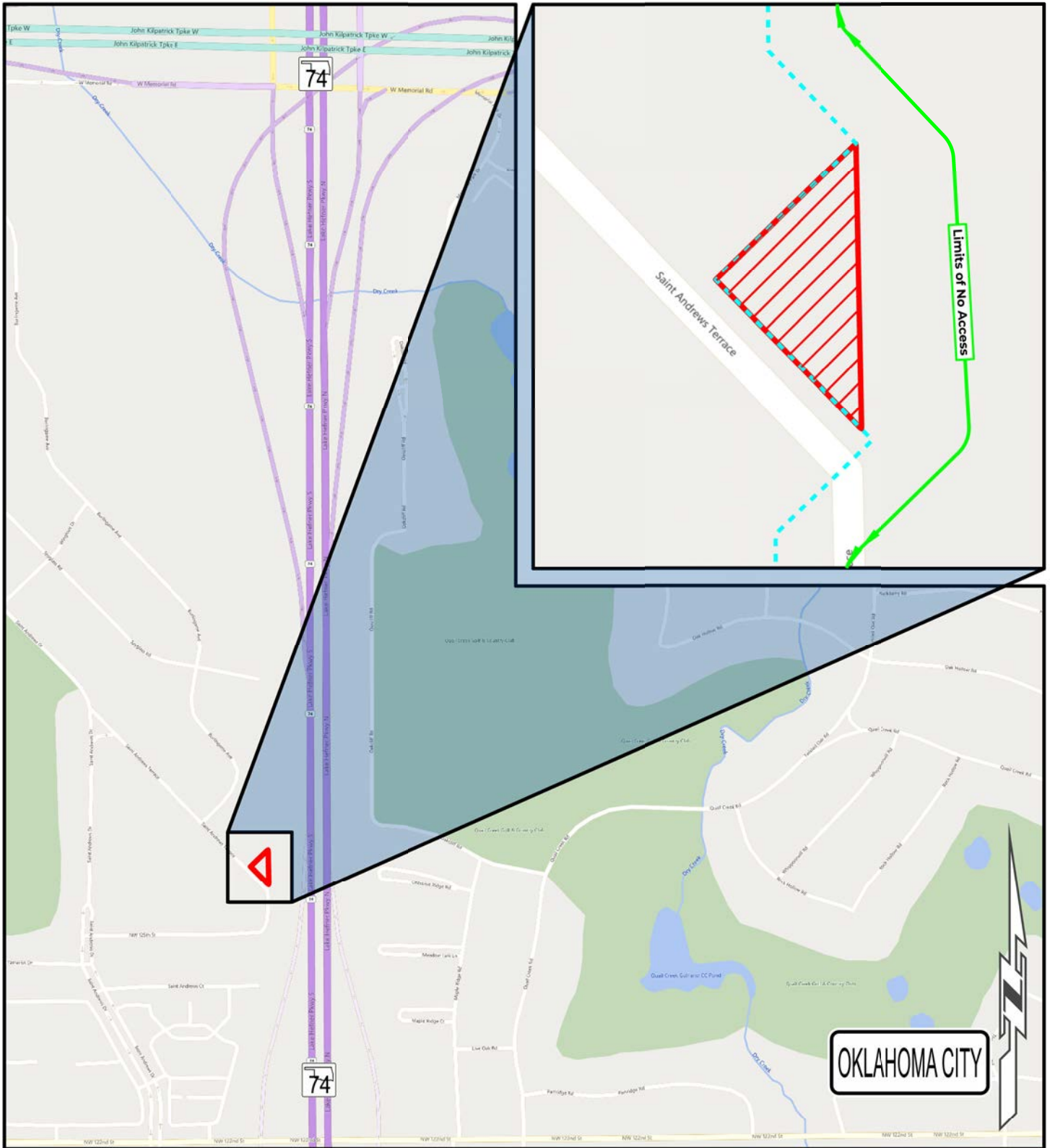



**OKLAHOMA** Transportation **SURPLUS LOCATION MAP**  
 SH-74 | 00075(02) | Oklahoma County

Limits of No Access	Requested Area	<b>Part of Parcel(s):</b>	23
Existing Right-of-Way	Easement	<b>Price:</b>	\$30,800.00
		<b>Size:</b>	≈ 0.18 ac. (7,700.40 sq. ft.)






**OKLAHOMA** **SURPLUS LOCATION MAP**  
 Transportation SH-74 | 00075(02) | Oklahoma County

Limits of No Access	Requested Area	Part of Parcel(s):	23
Existing Right-of-Way	Easement	Price:	\$30,800.00
		Size:	≈ 0.18 ac. (7,700.40 sq. ft.)