

Limits of No Access
Existing Right-of-Way
Requested Area
Easement

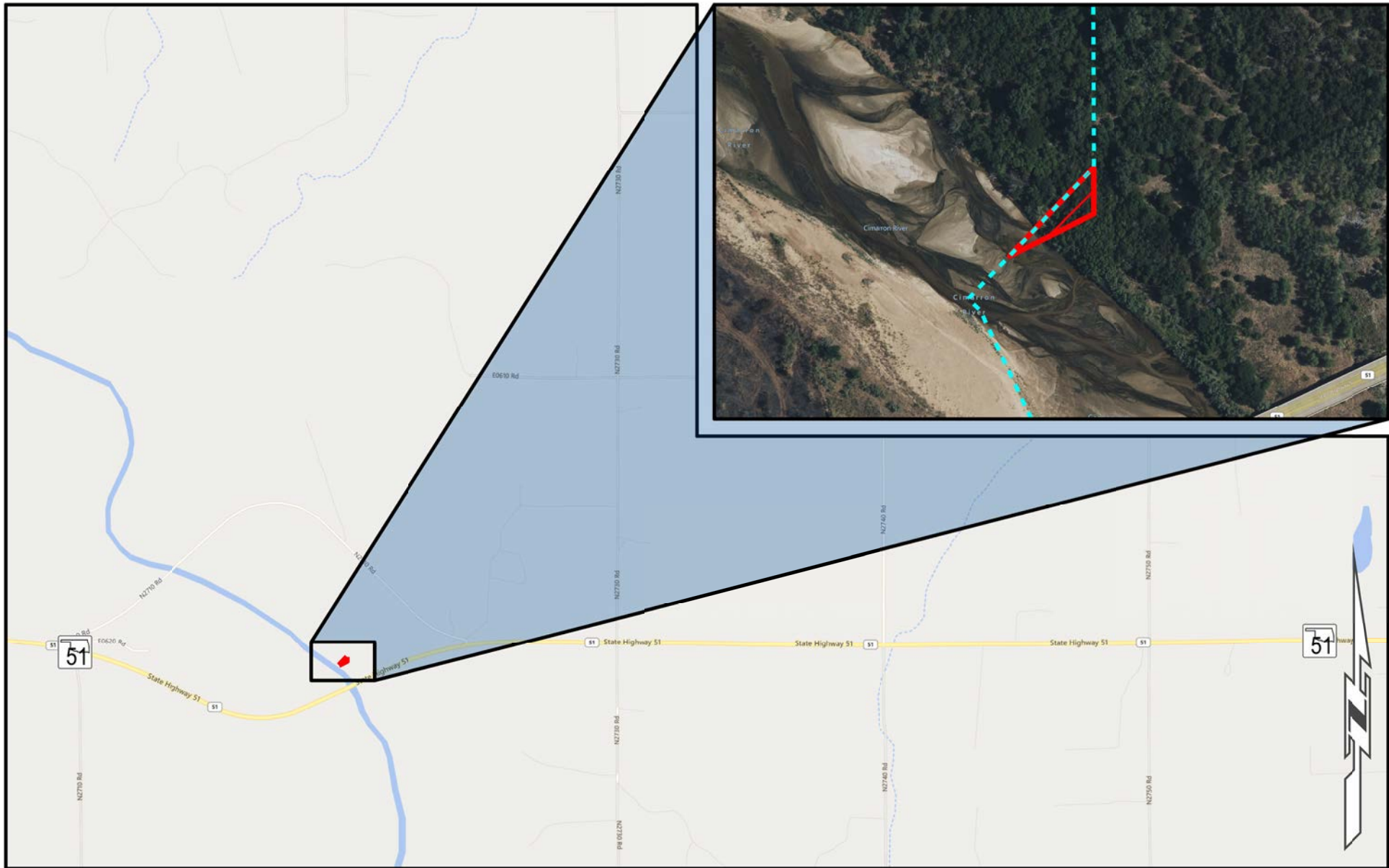


OKLAHOMA
Transportation

SURPLUS LOCATION MAP

SH-51 | 11474(05) | Kingfisher County

Part of Parcel(s):	10
Price:	\$331.00
Size:	≈ 0.16 ac. (6,978.32 sq. ft.)



Limits of No Access
Existing Right-of-Way
Requested Area
Easement


OKLAHOMA
 Transportation

SURPLUS LOCATION MAP

SH-51 | 11474(05) | Kingfisher County

Part of Parcel(s):	10
Price:	\$331.00
Size:	≈ 0.16 ac. (6,978.32 sq. ft.)