

Limits of No Access

Existing Right-of-Way

Requested Area

Easement



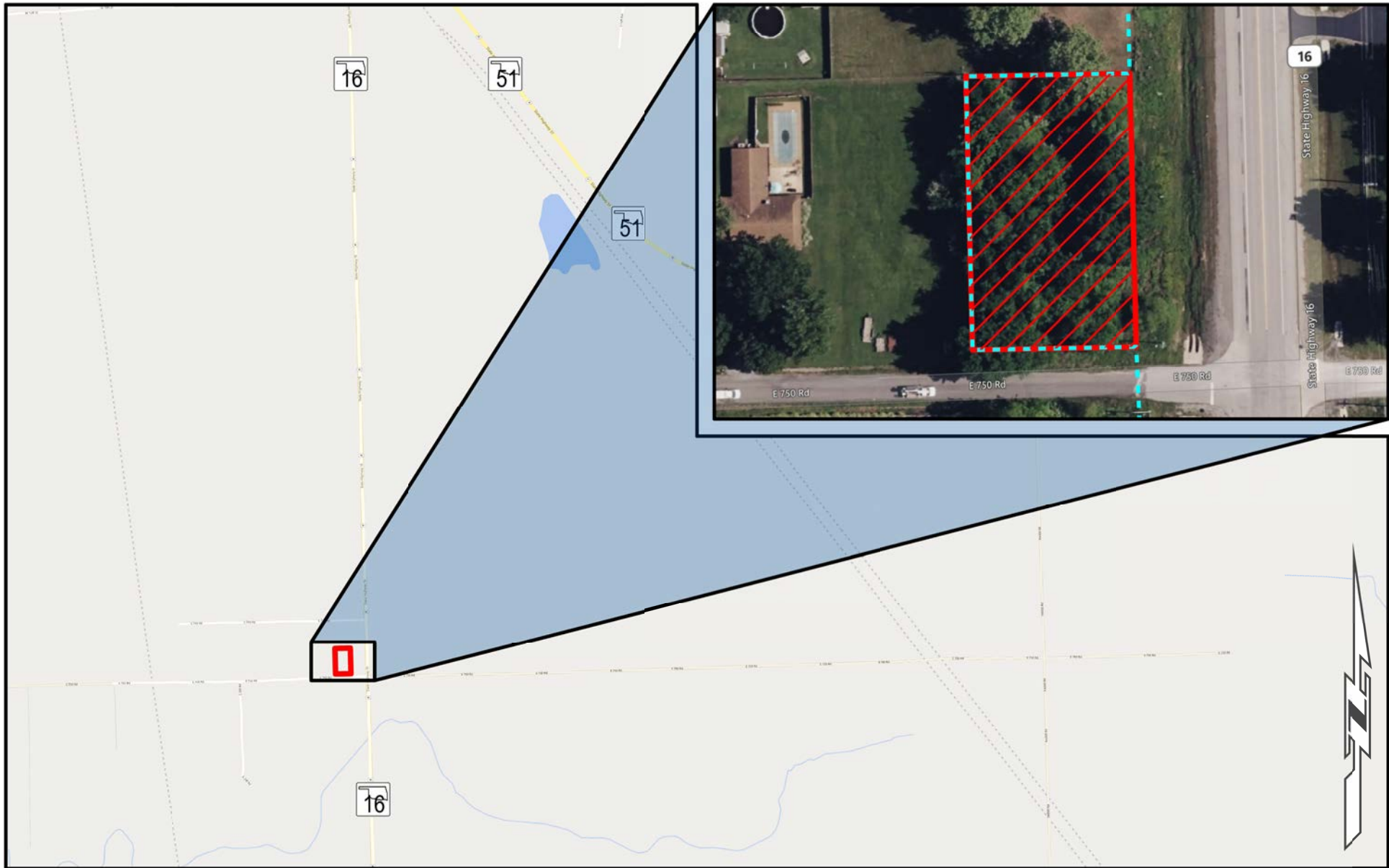
**OKLAHOMA**  
Transportation

# SURPLUS LOCATION MAP

SH-16 | 24366(05) | Wagoner County

Part of Parcel(s):	55
Price:	\$5,500.00
Size:	≈ 0.55 ac. (24,000.00 sq. ft.)





Limits of No Access
Existing Right-of-Way
Requested Area
Easement


**OKLAHOMA**  
 Transportation

# SURPLUS LOCATION MAP

SH-16 | 24366(05) | Wagoner County

<b>Part of Parcel(s):</b>	55
<b>Price:</b>	\$5,500.00
<b>Size:</b>	≈ 0.55 ac. (24,000.00 sq. ft.)