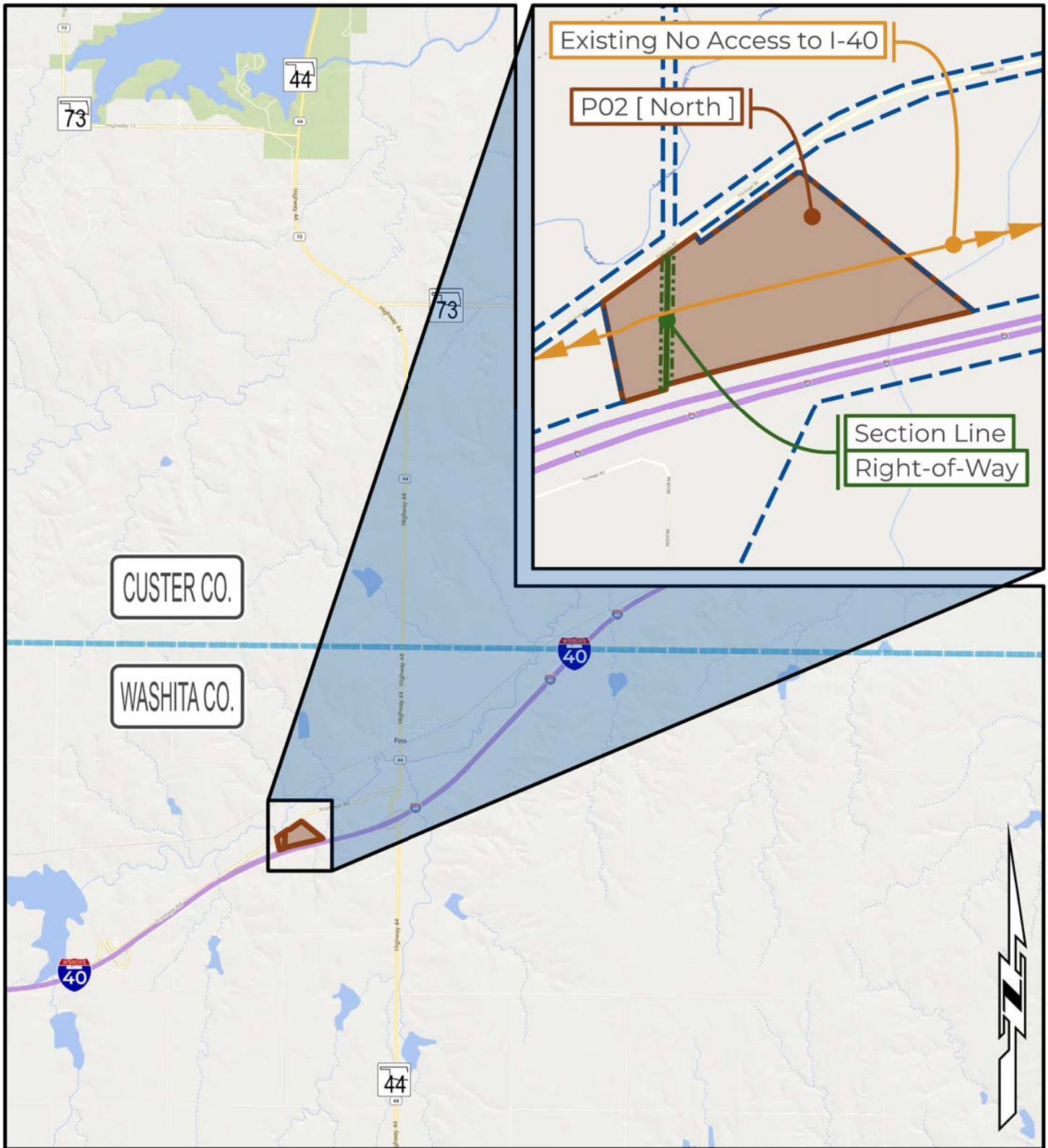



**OKLAHOMA** Transportation  
**SURPLUS LOCATION MAP**  
 I-40 | I-40-2(71)053 aka FAP-I-205(13)(15) | Washita County

Limits of Access Ctrl.	Requested Area
Existing Right-of-Way	Easement

**Part of Parcel(s):** 01 & 02 [ North ]  
**Price:** \$92,100.00  
**Size:** ≈ 32.01 ac. ( 1,394,373.11 sq. ft. )




**OKLAHOMA** Transportation **SURPLUS LOCATION MAP**  
 I-40 | I-40-2(71)053 aka FAP-I-205(13)(15) | Washita County

Limits of Access Ctrl.	Requested Area
Existing Right-of-Way	Easement

**Part of Parcel(s):** 01 & 02 [ North ]  
**Price:** \$92,100.00  
**Size:** ≈ 32.01 ac. ( 1,394,373.11 sq. ft. )