

# OKLAHOMA TRANSPORTATION COMMISSION

**At Large – Chairman, Gene McKown, Norman (405) 364-1152**

**District 1 – Member Bob Coburn, Muskogee, (918) 869-7495**

Adair, Cherokee, Haskell, McIntosh, Muskogee, Okmulgee, Sequoyah, Wagoner

**District 2 – Member, James L. Grimsley, Calera, (405) 514-7365**

Atoka, Bryan, Choctaw, Latimer, LeFlore, McCurtain, Marshall, Pittsburg, Pushmataha

**District 3 – VACANT**

Coal, Cleveland, Garvin, Hughes, Johnston, Lincoln, McClain, Okfuskee, Pontotoc, Pottawatomie, Seminole

**District 4 – Member Don Freymiller, Oklahoma City, (405) 792-8000**

Canadian, Garfield, Grant, Kay, Kingfisher, Logan, Noble, Oklahoma, Payne

**District 5 – Member, David Dyson, Elk City, (580) 225-0450**

Beckham, Blaine, Custer, Dewey, Greer, Harmon, Jackson, Kiowa, Roger Mills, Tillman, Washita

**District 6 – Member Bobby J. Alexander, Woodward, (580) 254-3232**

Alfalfa, Beaver, Cimarron, Ellis, Harper, Major, Texas, Woods, Woodward

**District 7 – Member, Stephen LaForge, Chickasha, (405) 222-3050**

Caddo, Carter, Comanche, Cotton, Grady, Jefferson, Love, Murray, Stephens

**District 8 – Vice-Chairman, Member Robert Peterson, Tulsa (918) 281-2673**

Craig, Creek, Delaware, Mayes, Nowata, Osage, Ottawa, Pawnee, Rogers, Tulsa, Washington

**Secretary of Transportation – Tim J. Gatz (405) 425-3602**

## Oklahoma Department of Transportation

Executive Director	Tim J. Gatz	(405) 522-1800
Deputy Director	Dawn Sullivan	(405) 521-4768
Chief Engineer	Brian Taylor	(405) 521-2701
Director of Finance	Chelley Hilmes	(405) 521-2591
Director of Operations	Shawn Davis	(405) 521-4675
Director of Engineering	Tim Tegeler	(405) 521-6916
Director of Project Delivery	Rick Johnson	(405) 522-6000
Director of Strategic Communications	Jessica Brown	(405) 227-0821
General Counsel	Sarah Penn	(405) 521-2630
Bridge Division	Justin Hernandez	(405) 521-2606
Comptroller		(405) 522-7468
Construction Division Engineer	John Leonard	(405) 521-2561
Contract Compliance Division	Jennifer Hankins	(405) 521-2072
Environmental Programs Division	Joe Brutsche	(405) 521-3050
Facilities Management Division	Ken Phillips	(405) 522-7605
Human Resources Division	Scott Lange	(405) 521-2194
Lake/Industrial Access Programs	Mitch Surrect	(405) 522-0290
Local Government Division	Shelly Williams	(405) 521-2553
Maintenance Division	Taylor Henderson	(405) 521-2557
Materials Division	Matt Romero	(405) 521-2677
Multi-Modal Division	Jared Schwennesen	(405) 521-4203
Office Engineer	Anthony Delce	(405) 521-2625
Office Services	Jamie Bleeker	(405) 521-2587
Operations Review & Evaluation Division	Holly Lowe	(405) 521-4708
Procurement	Brad Smith	(405) 522-2451
Project Management Division	Daniel Nguyen	(405) 522-3618
Right-of-Way Division	Robert Blackwell	(405) 521-2661
Roadway Design	Randy Woods	(405) 521-2695
Strategic Asset & Performance Management	Matthew Swift	(405) 521-2671
Survey Division	Kyle King	(405) 521-2621
Traffic Engineering Division	Lauren Parrish	(405) 521-2861

## ODOT Field Districts

<u>Location and District Engineer</u>	<u>Phone</u>	<u>Fax</u>
Dist. 1, Muskogee, Chris Wallace	(918)687-5407	(918) 687-9955
Dist. 2, Antlers, Anthony Echelle	(580)298-3371	(580) 298-6152
Dist. 3, Ada, Ron Brown	(580)332-1526	(580) 332-0261
Dist. 4, Perry, Trenton January	(580)336-7340	(580) 336-7350
Dist. 5, Clinton, Brent Almquist	(580)323-1431	(580) 323-1430
Dist. 6, Buffalo, Ron McDaniel	(580)735-2561	(580) 735-2248
Dist. 7, Duncan, Jay Earp	(580)255-7586	(580) 255-5064
Dist. 8, Tulsa, Randle White	(918)838-9933	(918) 832-9074



## AGENDA FOR THE TRANSPORTATION COMMISSION MEETING

**DATE:** Monday, August 1, 2022  
**TIME:** 11:00 a.m.  
**PLACE:** Commission Meeting Room  
ODOT Central Office  
200 NE 21<sup>st</sup> Street  
Oklahoma City, OK 73105

---

The Oklahoma Transportation Commission's meeting on Monday, August 1st will be held with a quorum of Commissioners present at the Oklahoma Department of Transportation Central Office.

The Oklahoma Transportation Commission Meeting is open to the general public, but it is also available to watch through the link listed below:

- **To watch:**

Public access meeting link: <http://www.ustream.tv/channel/odot-monthly-commission-meeting>  
Make sure the volume on your PC (or other device) and the Ustream volume are turned up.

OR

Link: <https://www.zoomgov.com/j/1602328455>

One tap mobile: US: +14086380968,,88223476150# or +16699006833,,88223476150#

Telephone - Dial(for higher quality, dial a number based on your current location):

US: +1 408 638 0968 or +1 669 900 6833 or +1 253 215 8782 or +1 346 248 7799 or

+1 646 876 9923 or +1 301 715 8592 or +1 312 626 6799

Webinar ID: 882 2347 6150

This meeting will be electronically recorded and audio livestreamed from 200 NE 21st St., Oklahoma City, OK 73105 and the phone number is 405-522-8000.

**Public Access to complete Commission Packet:** <https://www.odot.org/tcomm/tcmeetings2022.htm>

## **ITEMS TO BE PRESENTED BY COMMISSION CHAIRMAN**

Call to Order

Roll Call – Commission Secretary

## **ANNOUNCEMENTS AND PRESENTATIONS**

Introduction of the new Traffic Division Engineer – **Mr. Johnson**

Introduction of the new Roadway Design Division Engineer – **Mr. Johnson**

ODOT District 7 receives the Inaugural Oklahoma Work Zone Safe ODOT Teen Education Award – **Mr. Taylor**

## **ITEM TO BE PRESENTED BY THE SECRETARY TO THE COMMISSION**

**103. Approval of the Minutes of the Transportation Commission Meeting of July 11, 2022**

## **CONSENT DOCKET TO BE PRESENTED BY COMMISSION CHAIRMAN**

**104. Programming of Federal Railroad Crossing Safety Funds - Section 130 Title 23 Funds - Mr. Schwennesen**

**a) Bryan County – Commission District II**

In Durant, Construction funding for a signal and surface project which includes the installation of pedestal mounted flashing lights and gates, a 32' concrete crossing surface and grading for each approach at the intersection of North 49<sup>th</sup> Street and the Kiamichi's mainline. Total cost is \$662,252.00

**105. Speed Zone Revisions – Ms. Parrish**

**a) Comanche County - Commission District VII – including the City of Elgin**

1. Along US 277 for 9.03 miles
2. Along SH 17 for 6.94 miles

**b) Osage & Washington Counties - Commission District VIII – Along US 60 for 17.51 miles including the City of Bartlesville**

**106. Safety Improvement Projects – Ms. Parrish**

**a) Installation of School Zone - Commission District II**

We have received a request from the District II Engineer for the purchase of solar powered equipment for the installation of school zones at the following location:

Bryan County - Commission District II - One location along SH 78, in the City of Durant to include school zone advanced warning signs with flashing beacons, and pavement marking improvements

The equipment is estimated to cost \$8,000.00

**107. Land Sales – Mr. Phillips**

- a) McCurtain County – District II - located along the east side of US-259, approximately 11.86 miles northerly of the intersection of US-259 & SH-3 in Broken Bow, OK - \$10,950.00

**END OF CONSENT DOCKET**

---

**ITEMS TO BE PRESENTED BY DIRECTOR OF ENGINEERING – Mr. Tegeler**

**108. Programming Item**

Rogers County – District VIII - a project to repair fire damage to I-44/US- 412 over Spunky Creek - \$250,000 - Party responsible for the damage is known.

**109. Engineering Contracts**

Tulsa County – District VIII - to provide preliminary engineering for US-75: from Okmulgee County line, extending north approximately 6.0 miles to 151<sup>st</sup> Street

CI-2372A	Garver, LLC	\$2,095,343.00
----------	-------------	----------------

**110. Engineering Contract Supplements**

- a) McClain County – District III – this supplement is for additional engineering to develop final construction plans for I-35: at SH-9W interchange

EC-647	Supplement 13	Triad Design Group, Inc.	\$1,848,150.00
--------	---------------	--------------------------	----------------

- b) Oklahoma County – District IV – this supplement is for additional engineering to develop final construction plans for I-44: over the UPRR, 0.7 miles north of I-40

CI-2117	Supplement 2	HNTB Corporation	\$1,388,330.00
---------	--------------	------------------	----------------

- c) Stephens County – District VII - this supplement is for additional engineering to develop final construction plans for US-81: at the US-81/SH-7 junction south of Marlow (Lawton/Duncan WYE)

CI-2270B	Supplement 1	Freese & Nichols, Inc.	\$222,455.00
----------	--------------	------------------------	--------------

**ITEMS TO BE PRESENTED BY CONSTRUCTION DIVISION ENGINEER – Mr. Leonard**

**111. Change Orders with Cumulative Total of \$75,000.00 or Less – Information Only**

- a) Bryan County - SH-78 - STP-207C(105)PM / 24088(04), \$3,250.36, 0.03%
- b) Cleveland County - County Road - CIRB-214C(105)RB / 31129(04), \$11,047.60, 0.26%
- c) Cleveland County - City Street - STPG-214F(118)AG / 35326(04), \$2,005.00, 0.45%
- d) Delaware County - US-59 - NHPP-CRRS(009)(008) / 33781(04), \$5,016.43, -0.08%  
Underrun
- e) Ellis County - SH-15 - NHPP-019N(118)PM / 26497(04), \$10,240.00, -0.16% Underrun
- f) Grady County - US-277 - SSR-226C(094)SR / 34415(04), \$21,581.34, 2.19%
- g) Hughes County - County Road - CIRB-232D(066)RB / 32975(04), \$24,695.04, 0.55%
- h) Johnston County - County Road - STP-235D(066)CI / 33579(04), \$9,011.73, 1.74%
- i) Kingfisher County - US-81 - NHPP-237N(088)PM / 30450(04), \$61,398.75, 4.23%
- j) Logan County - County Road - CIRB-142C(152)RB / 25089(04), \$59,194.50, 1.87%
- k) McCurtain County - County Road - STP-245C(070)CI / 29962(04), \$1,320.00, 0.09%

- l) McCurtain County - US-70 - SBR-022N(223)SB / 34273(04), \$4,950.00, 1.25%
- m) Oklahoma County - City Street - STPG-255F(546)(547)AG / 34173(04), \$8,010.00, -0.76%  
Underrun
- n) Ottawa County - SH-125 - STP-258B(079)PM / 29689(04), \$22,794.39, 0.36%
- o) Texas County - SH-136 - STP-270C(041)PM / 24241(07), \$7,815.00, 0.06%
- p) Tulsa County - City Street - STP-272B(258)IG / 30742(04), \$88,552.96, -1.00% Underrun
- q) Tulsa County - City Street - TAP-272F(339)IG / 33038(04), \$21,660.00, 18.26%
- r) Tulsa County - I-44 - STP-272F(270)PM / 33818(04), \$2,784.00, -0.05% Underrun
- s) Tulsa County - I-44 - SBR-4400(072)SB / 34661(04), \$5,589.45, 0.21%
- t) Wagoner County - US-69 - NHPP-CRRS(007)PM / 32104(04), \$24,471.50, 0.78%
- u) Washita County - County Road - STP-275C(069)CI / 32925(04), \$4,726.80, 1.09%

**112. Change Orders with Cumulative Total Greater than \$75,000.00**

- a) Beaver County - SH-3 - NHPP-017N(268)PM / 31064(04), \$57.00, -0.00% Underrun
- b) Beckham County - I-40 - NHPPI-4000-(098)PM / 31001(04), \$683,581.59, -9.17% Underrun
- c) Blaine County - County Road - CIRB-206C(036)RB / 28704(04), \$289,243.34, 4.20%
- d) Carter County - US-70 - STP-210B(089)3P / 34419(04), \$85,213.86, 7.12%
- e) Choctaw County - County Road - STP-112D(078)CI / 24821(04), \$21,622.03, -0.40%  
Underrun
- f) Cleveland County - County Road - CIRB-214C(105)RB / 31129(04), \$254,846.30, 6.06%
- g) Coal County - County Road - CIRB-115C(074)RB / 24943(04), \$14,814.43, 0.38%
- h) Creek County - SH-48 - STP-219B(054)SS / 27925(04), \$63,072.80, 0.73%
- i) Grady County - US-62 - NHPP-126N(187)PM / 28182(04), \$24,453.41, 0.20%
- j) Greer County - County Road - CIRB-228C(023)RB / 30033(04), \$157,992.63, 4.12%
- k) Johnston County - County Road - STP-235C(052)CI / 32331(04), \$2,019.41, 0.16%
- l) Lincoln County - SH-66 - STP-241C(073)PM / 27947(04), \$177,443.28, 2.53%
- m) Marshall County - US-377 - STP-248C(036)PM / 28828(04), \$29,704.53, -0.07% Underrun
- n) Marshall County - US-70 - NHPP-248N(050)PM / 31278(04), \$20,607.45, 0.25%
- o) McClain County - SH-59 - STP-244C(072)PM / 29459(04), \$9,905.92, 0.29%
- p) McClain County - I-35 - NHPPI-3500(094)PM / 31045(04), \$336,707.18, 2.74%
- q) McCurtain County - US-259 - SSP-245N(068)(071)PM / 34333(07), \$91,000.00, 2.91%
- r) McIntosh County - County Road. - STP-246C(030)CI / 29374(04), \$94,809.47, 8.56%
- s) Nowata County - County Road - STP-253F(047)CI / 30491(04), #1, \$95,444.48, 4.87%
- t) Nowata County - County Road - STP-253F(047)CI / 30491(04), #3, \$20,812.53, 1.06%
- u) Okfuskee County - I-40 - NHPPI-4000-(100)PM / 21007(09), \$630,725.25, 3.56%
- v) Oklahoma County - I-40 - ACNHPPI-0040-5(382) / ACNHPPI-4000-(047) / 20324(04),  
\$37,434.71, 0.05%
- w) Oklahoma County - I-44 - NHPPI-4400-(037)(039)(040)(041)(042)(043)PM / 31006(04),  
\$252,052.45, 0.92%
- x) Osage County - US-60 - NHPP-257N(085)PM / 24233(04), \$298,336.00, 1.00%
- y) Payne County - US-177 - STP-260B(056)PM / 29860(04), \$148,915.40, 0.84%
- z) Pittsburg County - US-270 - STP-261B(103)PM / 29246(04), #4, \$86,244.61, 2.80%
- aa) Pittsburg County - US-270 - STP-261B(103)PM / 29246(04), #5, \$168,128.41, 5.47%
- bb) Pottawatomie County - SH-102 - STP-163C(328)PM / 21788(07), \$48,864.03, 0.46%
- cc) Sequoyah County - I-40 - NHPPI-4000-(076)(075)PM / SBR-4000(080)SB / 28988(04),  
\$93,561.90, 0.26%
- dd) Tulsa County - City Street - STP-272N(360)IG / 33315(04), \$100,633.00, 6.99%

**ITEMS TO BE PRESENTED BY THE COMPTROLLER DIVISION**

**113. Proposed Bid Openings – Ms. Hilmes**

- a) Final September, 2022 Proposed Bid Opening
- b) Tentative October, 2022 Proposed Bid Opening
- c) Tentative November, 2022 Proposed Bid Opening

**ITEM TO BE PRESENTED BY THE OFFICE ENGINEER – Mr. Delce**

**114. Awards**

July 14, 2022 – Regular Bid Opening

**ITEM TO BE PRESENTED BY THE DIRECTOR – Mr. Gatz**

**115. Director's Report**

**Information Only:** No Commission action required.

**ITEM TO BE PRESENTED BY COMMISSION CHAIRMAN**

**116. Adjournment Motion**

---

*The Oklahoma Department of Transportation (ODOT) ensures that no person or groups of persons shall, on the grounds of race, color, sex, religion, national origin, age, disability, retaliation or genetic information, be excluded from participation in, be denied the benefits of, or be otherwise subjected to discrimination under any and all programs, services, or activities administered by ODOT, its recipients, sub-recipients, and contractors. To request an accommodation please contact the ADA Coordinator at 405-521-4140 or the Oklahoma Relay Service at 1-800-722-0353. If you have any ADA or Title VI questions email [ODOT-ada-titlevi@odot.org](mailto:ODOT-ada-titlevi@odot.org).*

**FOR PRESENTATION AT COMMISSION MEETING AUGUST 1, 2022**

**SUBJECT: District 7 awarded inaugural Work Zone Safe award**

Work Zone Safe recently awarded the inaugural Oklahoma Work Zone Safe ODOT Teen Education Award to District 7 for its work in helping educate teen drivers on the need for Safety in Work Zones.

District 7 Engineer Jay Earp and his team earned this award by helping host three safety events for more than 1,300 students in Lawton, Tuttle and Verden. The events helped highlight four key areas of work zone safety including wearing seat belts and putting away distractions, identifying and understanding work zone signs, an overview of safe work zone practices, and reminders from highway workers and their families.

Work Zone Safe, a first of its kind program, offers teenage drivers a free, online safety course to help teach how work zones operate and show what steps drivers need to take to keep everyone safe.

Statewide, more than 13,000 Oklahoma teens have participated in the program since its inception in 2021.

**FOR PRESENTATION AT COMMISSION MEETING OF AUGUST 1, 2022**

**AGENDA ITEM NO.:** 104

**SUBJECT:** Programming of Federal Railroad Crossing Safety Funds-Section 130  
Title 23 Funds

**COUNTIES:** Bryan

**COMMISSIONER DISTRICTS:** II

Item(s) below qualify for safety improvements in Oklahoma under Section 130 of the Highway Safety Act. These railroad crossing improvements could include signal installations, signal preemption improvements, surface installation, concrete median installation, crossing elimination by closure, lens upgrades, crossbucks, advance warning signs, pavement markings and clearing of sight obstructions at grade crossings.

**a) Bryan County – Commission District II**

In Durant, Construction funding for a signal and surface project which includes the installation of pedestal mounted flashing lights and gates, a 32' concrete crossing surface and grading for each approach at the intersection of North 49<sup>th</sup> Street and the Kiamichi's mainline. Total cost is \$662,252.00. 90% Federal-aid grade crossing funds, 10% City of Durant funds for the signal, and 10% Railroad funds for the surface.

**COMMISSION APPROVAL IS RECOMMENDED.**



**PROJECT LIST**

**FEDERAL AT-GRADE RAILROAD CROSSING SAFETY FUNDS SECTION 130 TITLE 23 FUNDS**

**STATE OF OKLAHOMA RAILROAD MAINTENANCE REVOLVING FUNDS**

<b>PART NO</b>	<b>COUNTY</b>	<b>C D</b>	<b>HIGHWAY/ ROADWAY</b>	<b>DESCRIPTION</b>	<b>DOT ID NUMBER</b>	<b>FEDERAL FUNDS</b>	<b>STATE FUNDS</b>	<b>RAILROAD COMPANY FUNDS</b>	<b>CITY/ COUNTY FUNDS</b>	<b>TOTAL FUNDS</b>
a	Bryan	II	N 49th St	KRR	671534T	\$596,026.80	\$0.00	\$33,875.20	\$32,350.00	\$662,252.00
			<b>Grand Totals</b>			\$596,026.80	\$0.00	\$33,875.20	\$32,350.00	\$662,252.00

FOR PRESENTATION AT COMMISSIONER MEETING OF AUGUST 1, 2022

AGENDA ITEM NO: 105

SUBJECT: Speed Zone Revisions

a) Two Locations – Commission District VII

		Length
1.	<u>Along US 277 in Comanche County including the City of Elgin</u>	
65 MPH	Beginning at the US 62 & US 277 junction, extending easterly 2.94 miles to a point 1.78 miles west IH 44 & US 277 Junction <u>PRESENTLY NOT ZONED</u> <u>PRESENTLY POSTED 65 MPH (ZONING CHANGE)</u>	2.94 miles
55 MPH	Beginning at a point 1.78 miles west of the IH 44 & US 277 junction, extending easterly 1.47 miles to a point 0.31 mile west of the IH 44 & US 277 junction <u>PRESENTLY NOT ZONED</u> <u>PRESENTLY POSTED 65 MPH (CHANGE)</u>	1.47 miles
45 MPH	Beginning at a point 0.31 mile west of the IH 44 & US 277 junction, extending easterly 0.52 mile to a point 0.40 mile west of the US 277 & SH 17 junction <u>PRESENTLY ZONED 55 MPH</u> <u>PRESENTLY POSTED 55, 65 MPH (CHANGE)</u>	0.52 mile
35 MPH	Beginning at a point 0.40 west of the US 277 & SH 17 junction, extending easterly 0.71 mile to a point 0.31 mile northeast of the US 277 & SH 17 junction <u>PRESENTLY ZONED 40, 45, 50, 55 MPH</u> <u>PRESENTLY POSTED 40, 45, 55 MPH (CHANGE)</u>	0.71 mile
45 MPH	Beginning at a point 0.31 mile east of the US 277 & SH 17 junction, extending northeasterly 0.10 mile to a point 0.41 mile northeast of the US 277 & SH 17 junction <u>PRESENTLY ZONED 50, 60 MPH</u> <u>PRESENTLY POSTED 55 MPH (CHANGE)</u>	0.10 mile
55 MPH	Beginning at a point 0.41 mile east of the US 277 & SH 17 junction, extending northeasterly 0.57 mile to a point 0.98 mile northeast of the US 277 & SH 17 junction <u>PRESENTLY ZONED 60 MPH</u> <u>PRESENTLY POSTED 65 MPH (CHANGE)</u>	0.57 mile

60 MPH	Beginning at a point 0.98 mile east of the US 277 & SH 17 junction, extending northeasterly 2.72 miles to a point 0.35 mile south of Cole Avenue. <u>PRESENTLY NOT ZONED</u> <u>PRESENTLY POSTED 65 MPH (CHANGE)</u>	2.72 miles
--------	--	------------

=====

TOTAL APPROXIMATE LENGTH ZONED	9.03 miles
--------------------------------	------------

2.	<u>Along SH 17 in Comanche County including the City of Elgin</u>	Length
----	---	--------

30 MPH	Beginning at the US 277 & SH 17 junction, extending easterly 0.65 mile to a point 0.65 mile east of the US 277 & SH 17 junction	
25 MPH (School)	<u>SCHOOL ZONE (0.34 mile)</u> Beginning at a point 0.24 mile east of the US 277 & SH 17 junction, extending easterly 0.34 mile to a point 0.05 mile west of Keeney Road  Effective only on regular school days, From 7:30 am to 8:30 am and from 3:30 pm to 4:30 pm <u>PRESENTLY ZONED 25, 35, 45 MPH</u> <u>PRESENTLY POSTED 25, 35, 45 MPH (CHANGE)</u>	0.65 mile

40 MPH	Beginning a point 0.65 mile east of the US 277 & SH 17 junction, extending easterly 0.15 mile to a point 0.80 mile east of the US 277 & SH 17 junction <u>PRESENTLY ZONED/POSTED 45 MPH (CHANGE)</u>	0.15 mile
--------	---	-----------

50 MPH	Beginning at a point 0.80 mile east of the US 277 & SH 17 junction, extending easterly 0.34 mile to a point 1.14 miles east of the US 277 & SH 17 junction <u>PRESENTLY ZONED/POSTED 45/55 MPH (CHANGE)</u>	0.34 mile
--------	--	-----------

60 MPH	Beginning at a point 1.14 miles east of the US 277 & SH 17 junction, extending easterly 0.71 mile to a point 0.21 mile southeast of Kleeman/Trail Road <u>PRESENTLY NOT ZONED</u> <u>PRESENTLY POSTED 65 MPH (CHANGE)</u>	0.71 mile
--------	---	-----------

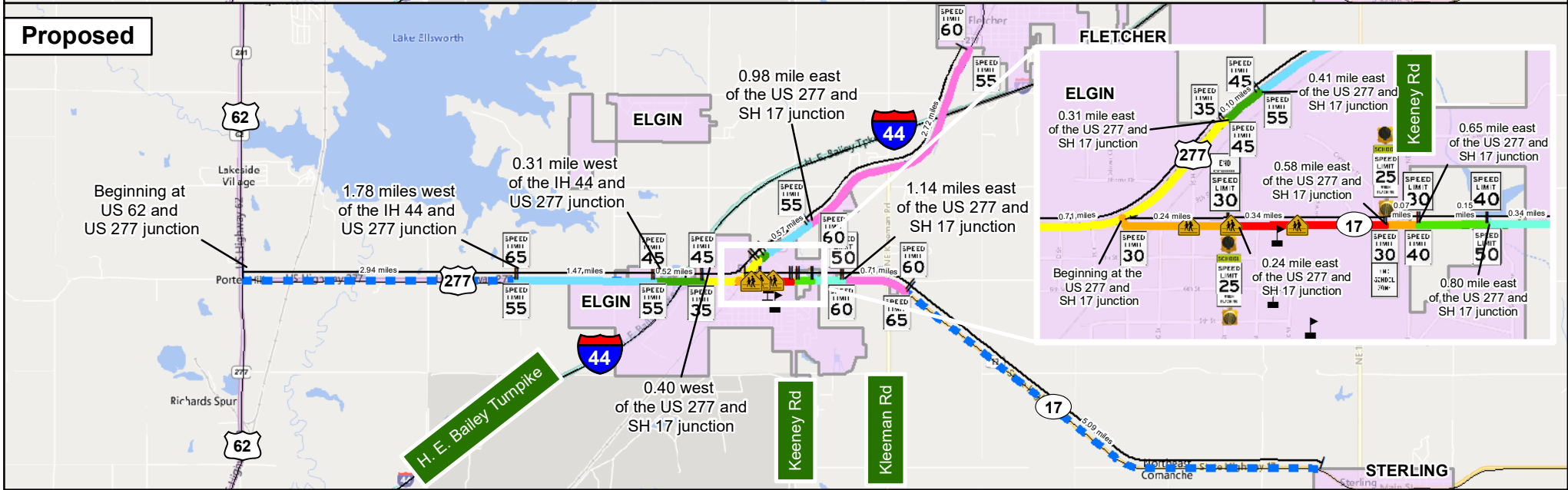
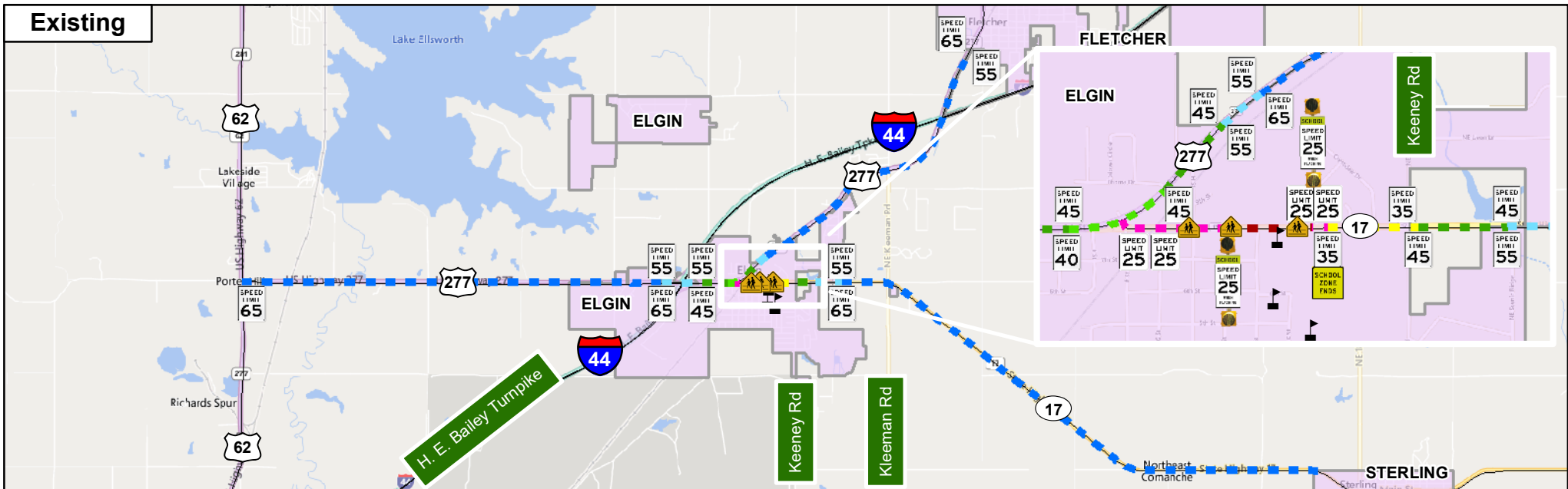
65 MPH	Beginning at a point 0.21 mile south of Kleeman/Trail Road, extending easterly 5.09 miles to a point 0.48 mile west of the SH 17 & SH 65 junction <u>PRESENTLY NOT ZONED</u> <u>PRESENTLY POSTED 65 MPH (ZONING CHANGE)</u>	5.09 miles
		=====
	TOTAL APPROXIMATE LENGTH ZONED	6.94 miles

**b) One Location – Commissioner District VIII**

	<u>Along US 60 in Osage &amp; Washington Counties including the City of Bartlesville</u>	Length
65 MPH	Beginning at the US 60 & SH 99 junction, extending easterly 14.10 miles to a point 0.03 mile east of CR 3425 Road. <u>PRESENTLY NOT ZONED</u> <u>PRESENTLY POSTED 65 MPH (ZONING CHANGE)</u>	14.10 miles
55 MPH	Beginning at a point 0.03 mile east of CR 3425 Road, extending easterly 2.61 miles to a point 0.80 mile west of the junction of US 60 & SH 123. <u>PRESENTLY NOT ZONED</u> <u>PRESENTLY POSTED 55, 65 MPH (CHANGE)</u>	2.61 miles
50 MPH	Beginning at a point 0.60 mile west of the junction of US 60 & SH 123, extending easterly 0.35 mile to a point 0.45 mile west of the junction of US 60 & SH 123. <u>PRESENTLY ZONED 50 MPH</u> <u>PRESENTLY POSTED 50, 55 MPH (POSTING CHANGE)</u>	0.35 mile
40 MPH	Beginning at a point 0.45 mile west of the junction of US 60 & SH 123, extending easterly 0.45 mile to the US 60 & SH 123 junction. <u>PRESENTLY ZONED 40 MPH</u> <u>PRESENTLY POSTED 30, 40, 50 MPH (POSTING CHANGE)</u>	0.45 mile
		=====
	TOTAL APPROXIMATE LENGTH ZONED	17.51 miles

Engineering studies have been conducted at these locations in accordance with current Department of Transportation Rules, Regulations, and Policies.

**Commission Approval is Recommended**

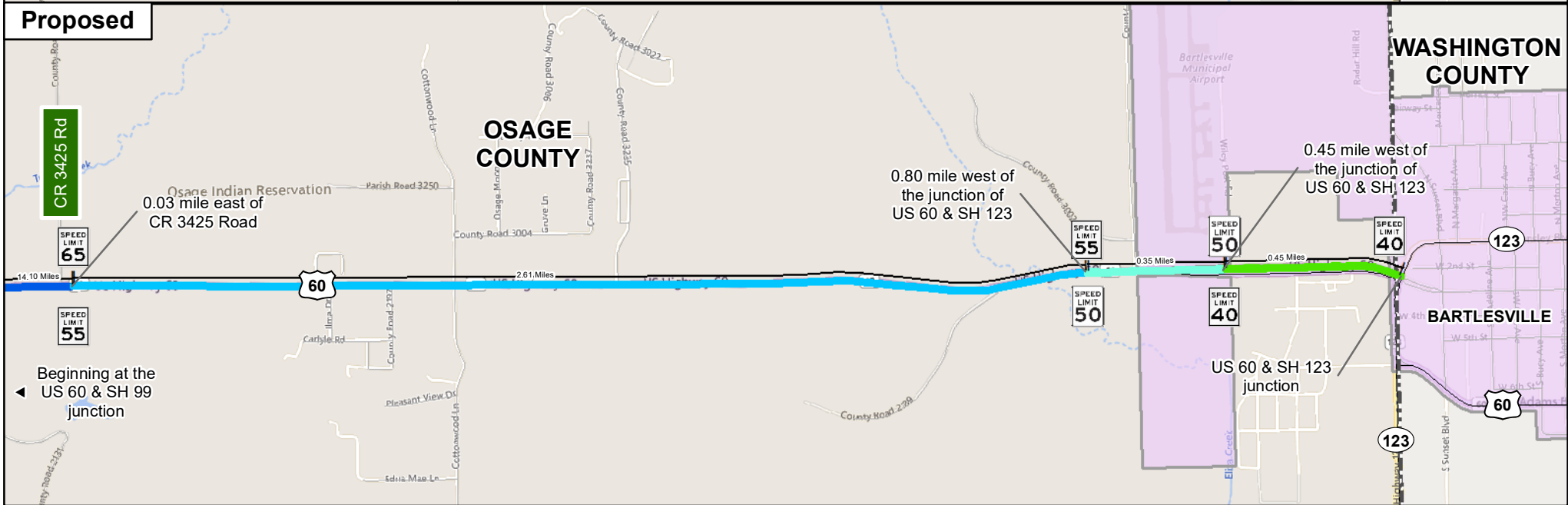
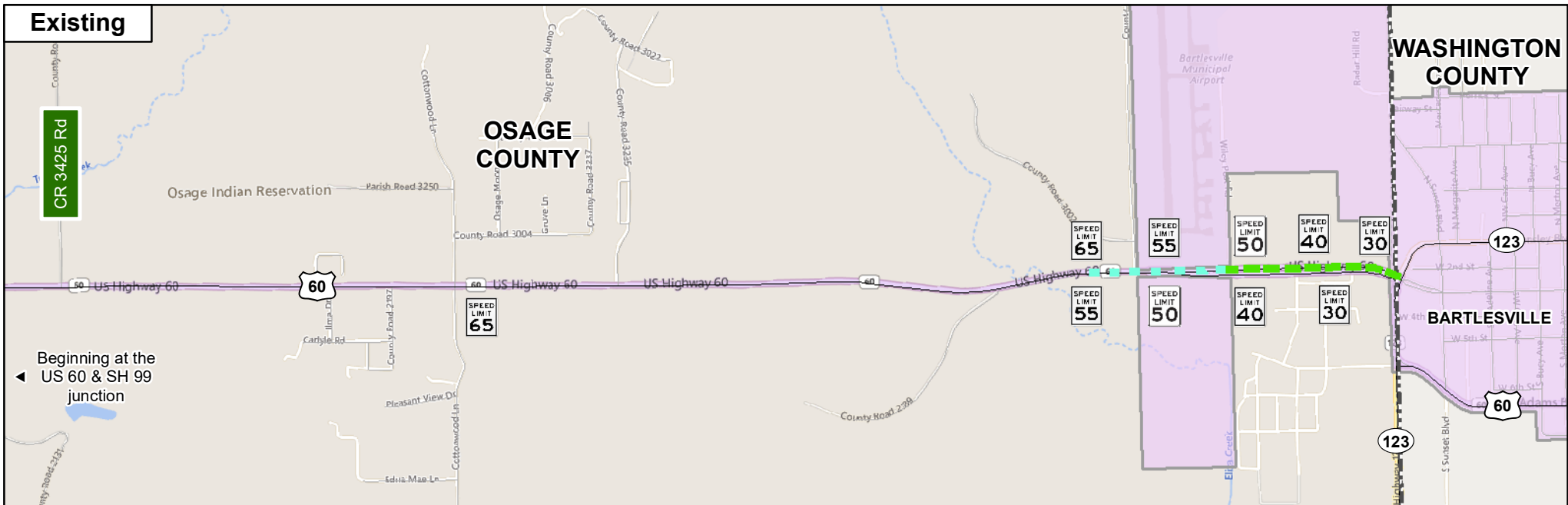


## US-277 & SH-17 Elgin Speed Zone Revision



- Legend**
- Existing 65 mph
  - Existing 55 mph
  - Existing 45 mph
  - Existing 40 mph
  - Existing 35 mph
  - Existing 25 mph
  - Existing 25 mph School Zone
  - Proposed 65 mph
  - Proposed 55 mph
  - Proposed 50 mph
  - Proposed 45 mph
  - Proposed 60 mph
  - Proposed 55 mph
  - Proposed 50 mph
  - Proposed 45 mph
  - Proposed 35 mph
  - Proposed 30 mph
  - Proposed 25 mph School Zone
  - Highways
  - 🚧 Crossing
  - 🏫 School
  - 🏘 Cities





# US-60 Bartlesville Speed Zone Revision

### Legend

- Existing 40 mph
- Existing 50 mph
- Proposed 40 mph
- Proposed 50 mph
- Proposed 55 mph
- Proposed 65 mph
- Highways
- Cities



**FOR PRESENTATION AT COMMISSION MEETING OF AUGUST 1, 2022**

**AGENDA ITEM NO: 106**

**SUBJECT: Safety Improvement Project**

**a) Installation of School Zone - Commission District II**

We have received a request from the District II Engineer for the purchase of solar powered equipment for the installation of a new school zone at the following location:

- 1) One location along SH 78, in the City of Durant, Bryan County in District II, to include school zone advanced warning signs with flashing beacons, and pavement marking improvements. Estimated Cost \$8,000.00

The equipment is estimated to cost \$8,000.00 and will be funded with 100% Federal Safety funds utilized by the Traffic Engineering Division on an annual basis for safety projects. The plans will be prepared by the Department and the installation will be completed by district maintenance forces.

**Commission approval is recommended.**

## FOR PRESENTATION AT THE AUGUST 1, 2022 COMMISSION MEETING

**AGENDA ITEM NO.:** 107(a)

**SUBJECT:** Land Sale, District II, FAP-2(5), Part of Parcels 115 & 116, Part of the SE/4 SW/4, Section 22, T4S, R24E, McCurtain County

**LOCATION:** Located along the East side of US-259, approximately 11.86 miles northerly of the intersection of US-259 & SH-3 in Broken Bow, OK.

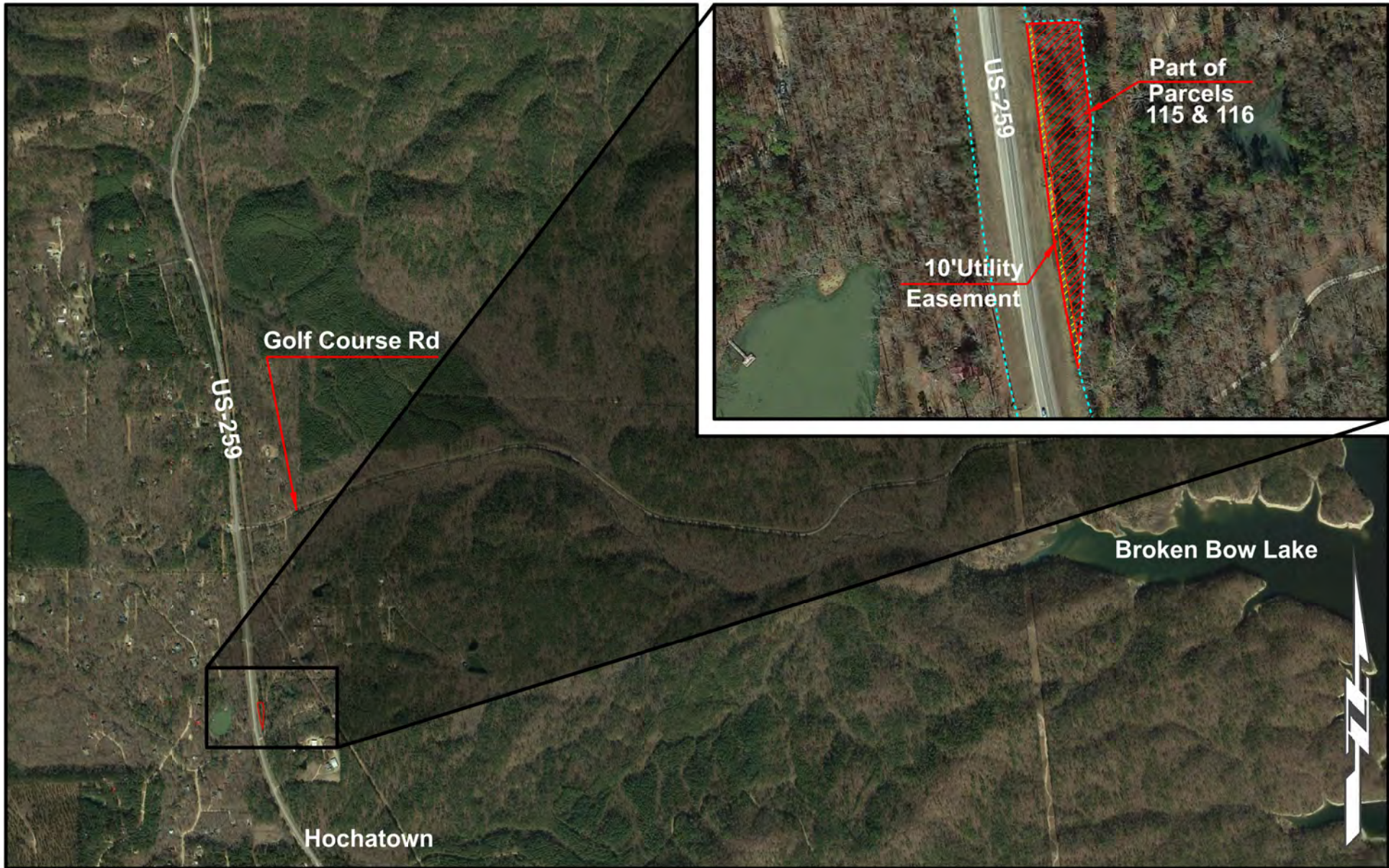
In 1957, the Department acquired in fee as 2-partial takings of 8.88 acres for the realignment of the US-259 highway corridor.

This office has received a written request from Darcee Shankles, owner of The Maze of Hochatown. This business has been partially built on highway right-of-way. Ms. Shankles is wanting to correct this problem so she can expand her businesses. She is asking ODOT to declare this right-of-way surplus to our needs. District 2 has provided exhibits showing how much right-of-way they will need for their future widening project through this area. Also, District 2 is requesting ODOT to retain a 10-foot Utility Easement along the westerly side of the newly proposed right-of-way line.

Darcee Shankles has accepted the Department's individual offer for the 0.95 acres of property, based on the current fair market value, of \$10,950.00.

We recommend approval of this sale.





Limits of No Access
Existing Right-of-Way
Requested Area
Easement

	<h2 style="margin: 0;">LOCATION MAP</h2> <p style="margin: 0;">US-259   FAP-F-2(5)   McCurtain County</p>	<p><b>SUBJECT PROPERTY:</b> Part of Parcels 115 &amp; 116</p> <p><b>SURPLUS LAND:</b> ≈ 0.95 acres</p> <p><b>SALE PRICE:</b> \$10,950.00</p>
---	---	--

**FOR PRESENTATION AT THE COMMISSION MEETING ON AUGUST 1, 2022**

**AGENDA ITEM NO: 108**

**SUBJECT: Programming Item**

**Rogers County - Commission District VIII**

The Department requests approval to program a project to repair fire damage to I-44/US-412 over Spunky Creek, located 0.4 miles East JCT I-44 in Rogers County. The estimated cost of this project is \$250,000 using State-Aid Funds. This project can be ready for a February 2023 letting. The party responsible for the damage is known (homeless person).

**APPROVAL IS RECOMMENDED**

**FOR PRESENTATION AT THE COMMISSION MEETING ON AUGUST 1, 2022**

**AGENDA ITEM NO: 109**

**SUBJECT: Engineering Contract**

**Tulsa County – District VIII (CI-2372A)**

The Department has selected Garver, LLC to provide preliminary engineering for US-75: from Okmulgee County line, extending north approximately 6.0 miles to 151<sup>st</sup> Street. Services to include preliminary engineering, reconnaissance, survey, and environmental.

CI-2372A	Garver, LLC
Total Not to Exceed Amount	\$2,095,343.00

Project JP-35461(05)(06) are included in the 8 year construction work plan with a scheduled let date in FFY 2028. The total estimate for construction of this project is \$53,000,000.00

**APPROVAL IS RECOMMENDED**



**FOR PRESENTATION AT THE COMMISSION MEETING ON AUGUST 1, 2022**

**AGENDA ITEM NO: 110**

**SUBJECT: Engineering Contract Supplements**

**a) McClain County – District III (EC-647, Supplement 13)**

The Department previously authorized Triad Design Group, Inc. to perform preliminary engineering and to prepare construction plans for I-35: at SH-9W interchange. This supplement is for additional engineering to develop final construction plans.

EC-647	Triad Design Group, Inc.
Supplement Not to Exceed Amount	\$1,848,150.00

This brings the total engineering contract cost, including this supplement to \$4,320,150.00

JP-19314(04) is included in the 8 year construction work plan with a scheduled let date in FFY 2023. Total estimate for construction of this project is \$25,438,361.00

**b) Oklahoma County – District IV (CI-2117, Supplement 2)**

The Department previously authorized HNTB Corporation to prepare construction plans for I-44: over the UPRR, 0.7 miles north of I-40. This supplement is for additional engineering to develop final construction plans.

CI-2117	HNTB Corporation
Supplement Not to Exceed Amount	\$1,388,330.00

This brings the total engineering contract cost, including this supplement to \$2,323,870.00.

JP-30637(04) is included in the 8 year construction work plan with a scheduled let date in FFY 2026. Total estimate for construction of this project is \$16,530,000.00

**c) Stephens County – District VII (CI-2270B, Supplement 1)**

The Department previously authorized Freese and Nichols, Inc. to perform preliminary engineering and prepare construction plans for US-81: at the US-81/SH-7 junction south of Marlow (Lawton/Duncan WYE). This supplement is for additional engineering to develop final construction plans.

CI-2270B	Freese and Nichols, Inc.
Supplement Not to Exceed Amount	\$222,455.00

This brings the total engineering contract cost, including this supplement to \$470,700.00.

JP-33761(04) is included in the 8 year construction work plan with a scheduled let date in FFY 2026. Total estimate for construction of this project is \$3,975,000.00

**APPROVAL IS RECOMMENDED**

**Change Orders with Cumulative Total of \$75,000 or Less (Information Only)**

**AUGUST 01, 2022 Commission Meeting**

ITEM	COUNTY	PROJECT NUMBER	FED OVER	CONTRACT	JPN	CHANGE ORDER	UNDER/ OVER RUN
111A	BRYAN	STP-207C(105)PM	<input type="checkbox"/>	210129	2408804	001	\$3,250.36
111B	CLEVELAND	CIRB-214C(105)RB	<input type="checkbox"/>	210010	3112904	002	\$11,047.60
111C	CLEVELAND	STPG-214F(118)AG	<input type="checkbox"/>	220010	3532604	001	\$2,005.00
111D	DELAWARE	NHPP-CRRS(009)PM / NHPP-CRRS(008)PM	<input type="checkbox"/>	220003	3378104	001	-\$5,016.43
111E	ELLIS	NHPP-019N(118)PM	<input type="checkbox"/>	210133	2649704	003	-\$10,240.00
111F	GRADY	SSR-226C(094)SR	<input type="checkbox"/>	210049	3441504	002	\$21,581.34
111G	HUGHES	CIRB-232D(066)RB	<input type="checkbox"/>	210136	3297504	001	\$24,695.04
111H	JOHNSTON	STP-235D(066)CI	<input type="checkbox"/>	210252	3357904	001	\$9,011.73
111I	KINGFISHER	NHPP-237N(088)PM	<input type="checkbox"/>	210319	3045004	002	\$61,398.75
111J	LOGAN	CIRB-142C(152)RB	<input type="checkbox"/>	210211	2508904	002	\$59,194.50
111K	MCCURTAIN	STP-245C(070)CI	<input type="checkbox"/>	220078	2996204	001	\$1,320.00
111L	MCCURTAIN	SBR-022N(223)SB	<input type="checkbox"/>	210328	3427304	001	\$4,950.00
111M	OKLAHOMA	STPG-255F(546)AG / STPG-255F(547)AG	<input type="checkbox"/>	220035	3417304	001	-\$8,010.00
111N	OTTAWA	STP-258B(079)PM	<input type="checkbox"/>	210060	2968904	003	\$22,794.39
111O	TEXAS	STP-270C(041)PM	<input type="checkbox"/>	210258	2424107	002	\$7,815.00
111P	TULSA	STP-272B(258)IG	<input type="checkbox"/>	190262	3074204	003	-\$88,552.96
111Q	TULSA	TAP-272F(339)IG	<input type="checkbox"/>	210339	3303804	002	\$21,660.00
111R	TULSA	STP-272F(270)PM	<input type="checkbox"/>	200333	3381804	005	-\$2,784.00
111S	TULSA	SBR-4400(072)SB	<input type="checkbox"/>	210341	3466104	001	\$5,589.45
111T	WAGONER	NHPP-CRRS(007)PM	<input type="checkbox"/>	210160	3210404	001	\$24,471.50
111U	WASHITA	STP-275C(069)CI	<input type="checkbox"/>	210294	3292504	002	\$4,726.80
							<b>\$170,908.07</b>

## Change Orders with Cumulative Total of \$75,000 or Less (Information Only)

### August 01, 2022 Commission Meeting

<b>Project Number:</b>	STP-207C(105)PM	<b>CO APPROVAL:</b>	Jun. 21, 2022	<b>AGENDA ITEM</b>
		<b>Contract ID:</b>	210129	<b>111A</b>
<b>Contractor :</b>	L & N BRIDGE, LLC	<b>Job Piece No.:</b>	24088(04)	
		<b>Highway No.:</b>	SH-78	
<b>Designer:</b>	SMITH, ROBERTS, & BALDISCHWILER, LLC.	<b>Div. / County.:</b>	02 / BRYAN	
<b>Description:</b>	GRADE, DRAIN, SURFACE, AND BRIDGE SH-78: FROM 0.3 MILES NORTH OF THE SH-91 JUNCTION, EXTEND NORTH IN ACHILLE. PROJECT LENGTH = 4.183 MILES			
<b>Contract Amount:</b>	\$9,778,751.06	<b>Funds Available:</b>	\$9,782,001.42	<b>Funds Paid(%) :</b> 29%
<b>Change Order</b>	1	<b>Original Time Used:</b>	61%	<b>Revised Time Used:</b> 61%

Change Order No. 1 approves a supplemental agreement and an additional appropriation in the amount of \$3,250.36.

Site Requirement: This change provides payment for the additional work required to perform a cold mix asphalt patch on the temporary detour due to damage caused by flooding during heavy rainfall.

**NEW ITEM**

**\$3,250.36**

Construction Miscellaneous (Cold Mix Asphalt Patching) 13.17 TON \$246.80 /TON \$3,250.36

CHANGE ORDER ACTIONS						
CHANGE ORDER NO.	(+ Overrun (-) Underrun Amount (\$)	%	Appropriated Amount (\$)	%	Supplemental Agreement Amount(\$)	%
1	\$3,250.36	0.03%	\$3,250.36	0.03%	\$3,250.36	0.03%
<b>TOTAL</b>	<b>\$3,250.36</b>	<b>0.03%</b>	<b>\$3,250.36</b>	<b>0.03%</b>	<b>\$3,250.36</b>	<b>0.03%</b>

## Change Orders with Cumulative Total of \$75,000 or Less (Information Only)

**August 01, 2022 Commission Meeting**

<b>Project Number:</b>	CIRB-214C(105)RB	<b>CO APPROVAL:</b>	Jul. 07, 2022	<b>AGENDA ITEM</b>	
<b>Contractor :</b>	T.J. CAMPBELL CONSTRUCTION COMPANY	<b>Contract ID:</b>	210010	<b>111B</b>	
		<b>Job Piece No.:</b>	31129(04)		
		<b>Highway No.:</b>	COUNTY ROAD		
<b>Designer:</b>	EST	<b>Div. / County.:</b>	03 / CLEVELAND		
<b>Description:</b>	GRADE, DRAIN, AND SURFACE COUNTY ROAD (156TH AVENUE S.E./NS-325): FROM MAGUIRE ROAD, EXTEND NORTH NEAR ETOWAH. PROJECT LENGTH = 3.742 MILES				
<b>Contract Amount:</b>	\$4,208,829.61	<b>Funds Available:</b>	\$4,225,377.38	<b>Funds Paid(%) :</b>	100%
<b>Change Order</b>	2	<b>Original Time Used:</b>	104%	<b>Revised Time Used:</b>	104%

Change Order No. 2 approves a supplemental agreement and an additional appropriation in the amount of \$11,047.60.

Site Requirement: This change provides payment for the additional work required to extend the street returns at Etowah Road and Hickory Trail to reduce the approach slope for better access; for the additional work required to increase the radius of the Cedar Lane street return to facilitate the large vehicles that utilize this drive; and for the removal of structures and obstructions pay item required to clear the right-of-way at Parcel No. 58 due to trash and debris preventing the proposed backslope from being constructed as planned.

**NEW ITEMS**

**\$11,047.60**

Earthwork (Etowah Road)	1.00 LS	\$916.10 /LS	\$916.10
Earthwork (Hickory Trail)	1.00 LS	\$2,295.77 /LS	\$2,295.77
Construction Miscellaneous (Cedar Lane)	1.00 LS	\$5,390.33 /LS	\$5,390.33
Removal of Structures & Obstructions (Parcel 58)	1.00 LS	\$2,445.40 /LS	\$2,445.40

CHANGE ORDER ACTIONS						
CHANGE ORDER NO.	(+ Overrun (-) Underrun Amount (\$)	%	Appropriated Amount (\$)	%	Supplemental Agreement Amount(\$)	%
1	\$5,500.17	0.13%	\$5,500.17	0.13%	\$5,500.17	0.13%
2	\$11,047.60	0.26%	\$11,047.60	0.26%	\$11,047.60	0.26%
3	\$254,846.30	6.06%	\$254,846.30	6.06%	\$0.00	0.00%
<b>TOTAL</b>	<b>\$271,394.07</b>	<b>6.45%</b>	<b>\$271,394.07</b>	<b>6.45%</b>	<b>\$16,547.77</b>	<b>0.39%</b>

## Change Orders with Cumulative Total of \$75,000 or Less (Information Only)

**August 01, 2022 Commission Meeting**

<b>Project Number:</b>	STPG-214F(118)AG	<b>CO APPROVAL:</b>	Jul. 13, 2022	<b>AGENDA ITEM</b>
		<b>Contract ID:</b>	220010	<b>111C</b>
<b>Contractor :</b>	MIDSTATE TRAFFIC CONTROL, INC.	<b>Job Piece No.:</b>	35326(04)	
		<b>Highway No.:</b>	CITY STREET	
<b>Designer:</b>	CITY OF NORMAN	<b>Div. / County.:</b>	03 / CLEVELAND	
<b>Description:</b>	SAFETY IMPROVEMENT (EMERGENCY VEHICLE PRE-EMPTION) CITY STREETS: AT MULTIPLE LOCATIONS IN THE CITY OF NORMAN. PROJECT LENGTH = 0.000 MILE			
<b>Contract Amount:</b>	\$443,535.00	<b>Funds Available:</b>	\$445,540.00	<b>Funds Paid(%) :</b> 84%
<b>Change Order</b>	1	<b>Original Time Used:</b>	27%	<b>Revised Time Used:</b> 27%

Change Order No. 1 approves an additional appropriation in the amount of \$2,005.00.

Engineering: This change provides payment for the overrun of the mast arm mounted signs pay item required to complete the project as specified due to an error with the plan quantity not matching the summary sheet.

**OVERRUN ITEM**

**\$2,005.00**

Mast Arm Mounted Signs (Alum.) 40.10 SF \$50.00 /SF \$2,005.00

<b>CHANGE ORDER ACTIONS</b>						
CHANGE ORDER NO.	(+ Overrun (-) Underrun Amount (\$)	%	Appropriated Amount (\$)	%	Supplemental Agreement Amount(\$)	%
1	\$2,005.00	0.45%	\$2,005.00	0.45%	\$0.00	0.00%
<b>TOTAL</b>	<b>\$2,005.00</b>	<b>0.45%</b>	<b>\$2,005.00</b>	<b>0.45%</b>	<b>\$0.00</b>	<b>0.00%</b>



## Change Orders with Cumulative Total of \$75,000 or Less (Information Only)

### August 01, 2022 Commission Meeting

<b>Project Number:</b>	NHPP-CRRS(009)PM / NHPP-CRRS(008)PM		<b>CO APPROVAL:</b>	Jul. 06, 2022	<b>AGENDA ITEM</b>
			<b>Contract ID:</b>	220003	<b>111D</b>
<b>Contractor :</b>	BECCO CONTRACTORS, INC.		<b>Job Piece No.:</b>	33781(04)	
			<b>Highway No.:</b>	US-59	
<b>Designer:</b>	BKL, INC.		<b>Div. / County.:</b>	08 / DELAWARE	
<b>Description:</b>	RESURFACE (ASPHALT) US-59: FROM THE ARKANSAS STATE LINE, EXTEND WEST NEAR WEST SILOAM SPRING. PROJECT LENGTH = 8.72 MILES				
<b>Contract Amount:</b>	\$5,987,000.00	<b>Funds Available:</b>	\$5,987,000.00	<b>Funds Paid(%) :</b>	39%
<b>Change Order</b>	1	<b>Original Time Used:</b>	20%	<b>Revised Time Used:</b>	20%

Change Order No. 1 approves a supplemental agreement resulting in an underrun to the contract in the amount of \$5,016.43.

Site Requirement: This change provides for the utilization of a conventional mill and overlay to rehabilitate all pavements west of Flint Creek in lieu of hot-in-place recycled asphalt and an ultra-thin bonded wearing course as planned due to constructability concerns. This change imposes a unit price reduction for that portion of the asphalt surfacing pay item in excess of 125% of the contract amount due to the significant overrun of this major item of work. The unit price for the S4(76-28) pay item was established in the 33781(04) portion of the contract.

<b>NEW ITEMS</b>	<b>\$136,251.73</b>
Superpave, Type S4 (PG 76-28 OK) (Unit Price Reduction)	728.06 TON      -\$4.85 /TON      -\$3,531.09
Superpave, Type S4 (PG 76-28 OK)	1,441.06 TON      \$97.00 /TON      \$139,782.82
<b>OVERRUN ITEMS</b>	<b>\$40,529.97</b>
Cold Milling Pavement	12,866.66 SY      \$3.00 /SY      \$38,599.98
Tack Coat	643.33 GAL      \$3.00 /GAL      \$1,929.99
<b>UNDERRUN ITEMS</b>	<b>-\$181,798.13</b>
Ultra-Thin Bonded Wearing Course, Type C	-529.06 TON      \$150.00 /TON      -\$79,359.00
Hot-In-Place Recycled Asph Concrete	-12,866.66 SY      \$5.50 /SY      -\$70,766.63
Hot-In Place Asphalt Emulsion	-42.23 TON      \$750.00 /TON      -\$31,672.50

<b>CHANGE ORDER ACTIONS</b>						
CHANGE ORDER NO.	(+ Overrun (-) Underrun Amount (\$))	%	Appropriated Amount (\$)	%	Supplemental Agreement Amount(\$)	%
1	-\$5,016.43	-0.08%	\$0.00	0.00%	\$0.00	0.00%
<b>TOTAL</b>	<b>-\$5,016.43</b>	<b>-0.08%</b>	<b>\$0.00</b>	<b>0.00%</b>	<b>\$0.00</b>	<b>0.00%</b>

## Change Orders with Cumulative Total of \$75,000 or Less (Information Only)

**August 01, 2022 Commission Meeting**

<b>Project Number:</b>	NHPP-019N(118)PM	<b>CO APPROVAL:</b>	Jun. 24, 2022	<b>AGENDA ITEM</b>	
<b>Contractor :</b>	THE CUMMINS CONSTRUCTION CO., INC.	<b>Contract ID:</b>	210133	<b>111E</b>	
		<b>Job Piece No.:</b>	26497(04)		
		<b>Highway No.:</b>	SH-15		
<b>Designer:</b>	TRIAD DESIGN GROUP	<b>Div. / County.:</b>	06 / ELLIS		
<b>Description:</b>	GRADE, DRAIN, SURFACE, AND BRIDGE SH-15: FROM 5.5 MILES EAST OF THE US-283 JUNCTION, EXTEND NORTHEAST NEAR GAGE. PROJECT LENGTH = 2.736 MILES				
<b>Contract Amount:</b>	\$6,403,700.61	<b>Funds Available:</b>	\$6,408,200.61	<b>Funds Paid(%) :</b>	31%
<b>Change Order</b>	3	<b>Original Time Used:</b>	72%	<b>Revised Time Used:</b>	72%

Change Order No. 3 approves a supplemental agreement resulting in an underrun to the contract in the amount of \$10,240.00.

**Site Requirement:** This change provides for the additional construction staking pay item required to accommodate raising the profile grade on Roadway Typical Section No. 2 to be on top of the existing concrete pavement discovered during construction. This change imposes a deduction to the contract for the subgrade stabilization due to cement kiln dust inadvertently being used on a portion of the project in lieu of cement as specified. This change extends the contract time fifty-seven days (twenty-one days due to delays associated with discovering the existing concrete pavement, twenty-one days due to delays in receiving concrete pipe from the manufacturer, eight days due to weather related delays not addressed in the time and diary reports, and seven days due to subgrade stabilization being utilized on Typical No. 2 in lieu of compacted subgrade as planned).

**NEW ITEMS**

**-\$10,240.00**

Adjustment for Non-Conforming Materials (Subgrade Stab.)	1.00 LS	-\$16,940.00 /LS	-\$16,940.00
Construction Staking Level II (Additional)	1.00 LS	\$6,700.00 /LS	\$6,700.00

<b>CHANGE ORDER ACTIONS</b>						
CHANGE ORDER NO.	(+ Overrun (-) Underrun Amount (\$)	%	Appropriated Amount (\$)	%	Supplemental Agreement Amount(\$)	%
1	\$0.00	0.00%	\$0.00	0.00%	\$0.00	0.00%
2	\$4,500.00	0.07%	\$4,500.00	0.07%	\$4,500.00	0.07%
3	-\$10,240.00	-0.16%	\$0.00	0.00%	\$0.00	0.00%
<b>TOTAL</b>	<b>-\$5,740.00</b>	<b>-0.09%</b>	<b>\$4,500.00</b>	<b>0.07%</b>	<b>\$4,500.00</b>	<b>0.07%</b>

## Change Orders with Cumulative Total of \$75,000 or Less (Information Only)

**August 01, 2022 Commission Meeting**

<b>Project Number:</b>	SSR-226C(094)SR	<b>CO APPROVAL:</b>	Jun. 16, 2022	<b>AGENDA ITEM</b>	
		<b>Contract ID:</b>	210049	<b>111F</b>	
<b>Contractor :</b>	OVERLAND CORPORATION	<b>Job Piece No.:</b>	34415(04)		
		<b>Highway No.:</b>	US-277		
<b>Designer:</b>	OKLA. DEPT. OF TRANSPORTATION	<b>Div. / County.:</b>	07 / GRADY		
<b>Description:</b>	RESURFACE (ASPHALT) US-277: FROM I-44, EXTEND EAST NEAR NINNEKAH. PROJECT LENGTH = 4.260 MILES				
<b>Contract Amount:</b>	\$983,780.00	<b>Funds Available:</b>	\$1,005,361.34	<b>Funds Paid(%):</b>	99%
<b>Change Order</b>	2	<b>Original Time Used:</b>	32%	<b>Revised Time Used:</b>	32%

Change Order No. 2 approves an additional appropriation in the amount of \$21,581.34.

Site Requirement: This change provides payment for the additional expense incurred by the contractor due to the increase of the asphalt binder price index as provided for in the contract.

**NEW ITEM**

**\$21,581.34**

Asphalt Binder Price Adjustment	1.00 LS	\$21,581.34 /LS	\$21,581.34
---------------------------------	---------	-----------------	-------------

<b>CHANGE ORDER ACTIONS</b>						
CHANGE ORDER NO.	(+ Overrun (-) Underrun Amount (\$)	%	Appropriated Amount (\$)	%	Supplemental Agreement Amount(\$)	%
1	-\$2,273.00	-0.23%	\$0.00	0.00%	\$0.00	0.00%
2	\$21,581.34	2.19%	\$21,581.34	2.19%	\$0.00	0.00%
<b>TOTAL</b>	<b>\$19,308.34</b>	<b>1.96%</b>	<b>\$21,581.34</b>	<b>2.19%</b>	<b>\$0.00</b>	<b>0.00%</b>

## Change Orders with Cumulative Total of \$75,000 or Less (Information Only)

### August 01, 2022 Commission Meeting

<b>Project Number:</b>	CIRB-232D(066)RB	<b>CO APPROVAL:</b>	Jun. 16, 2022	<b>AGENDA ITEM</b>
		<b>Contract ID:</b>	210136	<b>111G</b>
<b>Contractor :</b>	C-GAWF CONSTRUCTION, INC.	<b>Job Piece No.:</b>	32975(04)	
		<b>Highway No.:</b>	COUNTY ROADS	
<b>Designer:</b>	CEC	<b>Div. / County.:</b>	03 / HUGHES	
<b>Description:</b>	GRADE, DRAIN, AND SURFACE COUNTY ROADS (NS-393/EW-123): FROM THE SH-9 JUNCTION EXTEND SOUTH ON NS-393, THEN EAST ON EW-123 NEAR DUSTIN. PROJECT LENGTH = 4.19 MILES			
<b>Contract Amount:</b>	\$4,492,528.53	<b>Funds Available:</b>	\$4,517,223.57	<b>Funds Paid(%) :</b> 33%
<b>Change Order</b>	1	<b>Original Time Used:</b>	58%	<b>Revised Time Used:</b> 58%

Change Order No. 1 approves a supplemental agreement and an additional appropriation in the amount of \$24,695.04.

Engineering: This change provides payment for the additional work required to remove and replace the existing guardrail due to this work being inadvertently omitted from the plans. This change extends the contract time seven days to complete this additional work.

**NEW ITEMS**

**\$24,695.04**

Removal of Guardrail	400.00 LF	\$4.95 /LF	\$1,980.00
Guardrail Anchor Unit (Type A)	4.00 EA	\$2,591.88 /EA	\$10,367.52
Guardrail Anchor Unit (Type D-BF)	4.00 EA	\$3,086.88 /EA	\$12,347.52

#### CHANGE ORDER ACTIONS

CHANGE ORDER NO.	(+ Overrun (-) Underrun Amount (\$)	%	Appropriated Amount (\$)	%	Supplemental Agreement Amount(\$)	%
1	\$24,695.04	0.55%	\$24,695.04	0.55%	\$24,695.04	0.55%
<b>TOTAL</b>	<b>\$24,695.04</b>	<b>0.55%</b>	<b>\$24,695.04</b>	<b>0.55%</b>	<b>\$24,695.04</b>	<b>0.55%</b>

## Change Orders with Cumulative Total of \$75,000 or Less (Information Only)

### August 01, 2022 Commission Meeting

<b>Project Number:</b>	STP-235D(066)CI	<b>CO APPROVAL:</b>	Jun. 16, 2022	<b>AGENDA ITEM</b>
		<b>Contract ID:</b>	210252	<b>111H</b>
<b>Contractor :</b>	BUILT RIGHT CONSTRUCTION, LLC	<b>Job Piece No.:</b>	33579(04)	
		<b>Highway No.:</b>	COUNTY ROAD	
<b>Designer:</b>	CED #4	<b>Div. / County.:</b>	03 / JOHNSTON	
<b>Description:</b>	BRIDGE AND APPROACHES COUNTY ROAD (ENGLISH ROAD/NS-3683); OVER SANDY CREEK, 2.8 MILES NORTH OF SH-48A NEAR COLEMAN. PROJECT LENGTH = 0.171 MILE			
<b>Contract Amount:</b>	\$517,316.85	<b>Funds Available:</b>	\$526,328.58	<b>Funds Paid(%) :</b> 94%
<b>Change Order</b>	1	<b>Original Time Used:</b>	82%	<b>Revised Time Used:</b> 82%

Change Order No. 1 approves a supplemental agreement and an additional appropriation in the amount of \$9,011.73.

Engineering: This change provides payment for the guardrail bridge connection pay item required to add rub rail to the guardrail as specified due to this pay item being inadvertently omitted from the plans.

**NEW ITEM**

**\$9,011.73**

Guardrail Bridge Conn (D-BF Retrofit) 4.00 EA \$2,252.93 /EA \$9,011.73

CHANGE ORDER ACTIONS						
CHANGE ORDER NO.	(+ Overrun - Underrun Amount (\$)	%	Appropriated Amount (\$)	%	Supplemental Agreement Amount(\$)	%
1	\$9,011.73	1.74%	\$9,011.73	1.74%	\$9,011.73	1.74%
<b>TOTAL</b>	<b>\$9,011.73</b>	<b>1.74%</b>	<b>\$9,011.73</b>	<b>1.74%</b>	<b>\$9,011.73</b>	<b>1.74%</b>

## Change Orders with Cumulative Total of \$75,000 or Less (Information Only)

**August 01, 2022 Commission Meeting**

<b>Project Number:</b>	NHPP-237N(088)PM	<b>CO APPROVAL:</b>	Jul. 12, 2022	<b>AGENDA ITEM</b>
		<b>Contract ID:</b>	210319	<b>111I</b>
<b>Contractor :</b>	LOGOS CONSTRUCTION CO., LLC	<b>Job Piece No.:</b>	30450(04)	
		<b>Highway No.:</b>	US-81	
<b>Designer:</b>	POE & ASSOCIATES	<b>Div. / County.:</b>	04 / KINGFISHER	
<b>Description:</b>	BRIDGE REHABILITATION US-81 (SOUTHBOUND): OVER CIMARRON RIVER, 6.9 MILES NORTH OF THE SH-33 JUNCTION NEAR DOVER. PROJECT LENGTH = 0.276 MILE			
<b>Contract Amount:</b>	\$1,451,826.42	<b>Funds Available:</b>	\$1,521,319.94	<b>Funds Paid(%) :</b> 82%
<b>Change Order</b>	2	<b>Original Time Used:</b>	104%	<b>Revised Time Used:</b> 104%

Change Order No. 2 approves an additional appropriation in the amount of \$61,398.75.

Site Requirement: This change provides payment for the overrun of pneumatically placed mortar pay item required to repair the piers and abutments during construction due to being more deteriorated than expected. This change extends the contract time fifteen days to complete this additional work.

**OVERRUN ITEM**

**\$61,398.75**

Pneumatically Placed Mortar	116.95 SY	\$525.00 /SY	\$61,398.75
-----------------------------	-----------	--------------	-------------

<b>CHANGE ORDER ACTIONS</b>						
CHANGE ORDER NO.	(+ Overrun - Underrun Amount (\$)	%	Appropriated Amount (\$)	%	Supplemental Agreement Amount(\$)	%
1	\$8,094.77	0.56%	\$8,094.77	0.56%	\$8,094.77	0.56%
2	\$61,398.75	4.23%	\$61,398.75	4.23%	\$0.00	0.00%
<b>TOTAL</b>	<b>\$69,493.52</b>	<b>4.79%</b>	<b>\$69,493.52</b>	<b>4.79%</b>	<b>\$8,094.77</b>	<b>0.56%</b>

## Change Orders with Cumulative Total of \$75,000 or Less (Information Only)

**August 01, 2022 Commission Meeting**

<b>Project Number:</b>	CIRB-142C(152)RB	<b>CO APPROVAL:</b>	Jun. 21, 2022	<b>AGENDA ITEM</b>
<b>Contractor :</b>	ALLEN CONTRACTING, INC./SHELL CONSTRUCTION CO., INC. (JV)	<b>Contract ID:</b>	210211	<b>111J</b>
		<b>Job Piece No.:</b>	25089(04)	
		<b>Highway No.:</b>	COUNTY ROAD	
<b>Designer:</b>	MEHLBURGER	<b>Div. / County.:</b>	04 / LOGAN	
<b>Description:</b>	GRADE, DRAIN, AND SURFACE COUNTY ROAD (COLTRANE ROAD/NS-312): FROM WATERLOO ROAD, EXTEND NORTH NEAR EDMOND. PROJECT LENGTH = 0.996 MILE			
<b>Contract Amount:</b>	\$3,170,376.45	<b>Funds Available:</b>	\$3,229,570.95	<b>Funds Paid(%) :</b> 70%
<b>Change Order</b>	2	<b>Original Time Used:</b>	104%	<b>Revised Time Used:</b> 77%

Change Order No. 2 approves a supplemental agreement and an additional appropriation in the amount of \$59,194.50.

Site Requirement: This change provides payment for the riprap and filter blanket pay items required to provide adequate permanent erosion control at the drainage outfalls located at Station 26+64.50 and 53+65.00 due to erosion concerns.

<b>NEW ITEMS</b>	<b>\$59,194.50</b>
Type I-A Plain Riprap	325.00 TON      \$120.56 /TON      \$39,182.00
Type I-A Filter Blanket	250.00 TON      \$80.05 /TON      \$20,012.50

<b>CHANGE ORDER ACTIONS</b>						
CHANGE ORDER NO.	(+) Overrun (-) Underrun Amount (\$)	%	Appropriated Amount (\$)	%	Supplemental Agreement Amount(\$)	%
1	\$0.00	0.00%	\$0.00	0.00%	\$0.00	0.00%
2	\$59,194.50	1.87%	\$59,194.50	1.87%	\$59,194.50	1.87%
<b>TOTAL</b>	<b>\$59,194.50</b>	<b>1.87%</b>	<b>\$59,194.50</b>	<b>1.87%</b>	<b>\$59,194.50</b>	<b>1.87%</b>

## Change Orders with Cumulative Total of \$75,000 or Less (Information Only)

**August 01, 2022 Commission Meeting**

<b>Project Number:</b>	STP-245C(070)CI	<b>CO APPROVAL:</b>	Jun. 20, 2022	<b>AGENDA ITEM</b>
		<b>Contract ID:</b>	220078	<b>111K</b>
<b>Contractor :</b>	HASKELL LEMON CONSTRUCTION CO.	<b>Job Piece No.:</b>	29962(04)	
		<b>Highway No.:</b>	COUNTY ROAD	
<b>Designer:</b>	MKEC ENGINEERING	<b>Div. / County.:</b>	02 / MCCURTAIN	
<b>Description:</b>	BRIDGE AND APPROACHES COUNTY ROAD (D-1756): OVER ROCK CREEK, 1.0 MILE EAST OF US-259 NEAR SMITHVILLE. PROJECT LENGTH = 0.303 MILE			
<b>Contract Amount:</b>	\$1,483,561.60	<b>Funds Available:</b>	\$1,484,881.60	<b>Funds Paid(%) :</b> 6%
<b>Change Order</b>	1	<b>Original Time Used:</b>	0%	<b>Revised Time Used:</b> 0%

Change Order No. 1 approves a supplemental agreement and an additional appropriation in the amount of \$1,320.00.

Scope: This change provides for the utilization of a portable traffic signal system required to provide direction to the traveling public in lieu of flaggers as specified due to needing traffic control twenty-four hours a day. This change also provides payment for the construction sign pay item required to provide adequate direction to the traveling public due to this pay item being inadvertently omitted from the plans.

<b>NEW ITEMS</b>	<b>\$33,600.00</b>
Construction Signs 6.26 SF to 15.99 SF	1,200.00 SD      \$1.10 /SD      \$1,320.00
Portable Traffic Signal System	1.00 LS      \$32,280.00 /LS      \$32,280.00
<b>UNDERRUN ITEM</b>	<b>-\$32,280.00</b>
Flagger	-240.00 SD      \$134.50 /SD      -\$32,280.00

<b>CHANGE ORDER ACTIONS</b>						
CHANGE ORDER NO.	(+ Overrun (-) Underrun Amount (\$)	%	Appropriated Amount (\$)	%	Supplemental Agreement Amount(\$)	%
1	\$1,320.00	0.09%	\$1,320.00	0.09%	\$1,320.00	0.09%
<b>TOTAL</b>	<b>\$1,320.00</b>	<b>0.09%</b>	<b>\$1,320.00</b>	<b>0.09%</b>	<b>\$1,320.00</b>	<b>0.09%</b>



## Change Orders with Cumulative Total of \$75,000 or Less (Information Only)

### August 01, 2022 Commission Meeting

<b>Project Number:</b>	SBR-022N(223)SB	<b>CO APPROVAL:</b>	Jun. 30, 2022	<b>AGENDA ITEM</b>
		<b>Contract ID:</b>	210328	<b>111L</b>
<b>Contractor :</b>	BUILT RIGHT CONSTRUCTION, LLC	<b>Job Piece No.:</b>	34273(04)	
		<b>Highway No.:</b>	US-70	
<b>Designer:</b>	GARVER	<b>Div. / County.:</b>	02 / MCCURTAIN	
<b>Description:</b>	BRIDGE REHABILITATION US-70: OVER LITTLE RIVER OVERFLOW, 2.2 MILES NORTH OF THE US-259 JUNCTION NEAR IDABEL. PROJECT LENGTH = 0.055 MILE			
<b>Contract Amount:</b>	\$396,561.20	<b>Funds Available:</b>	\$401,511.20	<b>Funds Paid(%) :</b> 68%
<b>Change Order</b>	1	<b>Original Time Used:</b>	3%	<b>Revised Time Used:</b> 3%

Change Order No. 1 approves a supplemental agreement and an additional appropriation in the amount of \$4,950.00.

Site Requirement: This change provides payment for the elastomeric mortar pay item required to repair a damaged expansion joint on the bridge discovered during construction.

**NEW ITEM**

**\$4,950.00**

Elastomeric Mortar 9.00 CF \$550.00 /CF \$4,950.00

<b>CHANGE ORDER ACTIONS</b>						
CHANGE ORDER NO.	(+ Overrun - Underrun Amount (\$)	%	Appropriated Amount (\$)	%	Supplemental Agreement Amount(\$)	%
1	\$4,950.00	1.25%	\$4,950.00	1.25%	\$4,950.00	1.25%
<b>TOTAL</b>	<b>\$4,950.00</b>	<b>1.25%</b>	<b>\$4,950.00</b>	<b>1.25%</b>	<b>\$4,950.00</b>	<b>1.25%</b>

## Change Orders with Cumulative Total of \$75,000 or Less (Information Only)

### August 01, 2022 Commission Meeting

<b>Project Number:</b>	STPG-255F(546)AG / STPG-255F(547)AG	<b>CO APPROVAL:</b>	Jul. 12, 2022	<b>AGENDA ITEM</b>
		<b>Contract ID:</b>	220035	<b>111M</b>
<b>Contractor :</b>	TRAFFIC & LIGHTING SYSTEMS, LLC	<b>Job Piece No.:</b>	34173(04)	
		<b>Highway No.:</b>	CITY STREETS	
<b>Designer:</b>	OKLA. DEPT. OF TRANSPORTATION	<b>Div. / County.:</b>	04 / OKLAHOMA	
<b>Description:</b>	TRAFFIC SIGNALS (DETECTION AND FLASHING YELLOW UPGRADES) CITY STREETS: AT MULTIPLE LOCATIONS IN OKLAHOMA CITY. PROJECT LENGTH = 0.00 MILES			
<b>Contract Amount:</b>	\$1,048,487.00	<b>Funds Available:</b>	\$1,048,487.00	<b>Funds Paid(%) :</b> 28%
<b>Change Order</b>	1	<b>Original Time Used:</b>	7%	<b>Revised Time Used:</b> 7%

Change Order No. 1 approves a supplemental agreement resulting in an underrun to the contract in the amount of \$8,010.00.

Site Requirement: This change provides for the bored conduit and pull box pay items required to upgrade the signal at 44th and Council Road as planned due to the existing conduit and pull boxes being too small to be able to pull new wires through; and for the overrun of various pay items required to upgrade the signal at 192nd and Pennsylvania Avenue as specified due to various unforeseen site conditions experienced during construction. This change reclassifies the radar detection system pay item due to discovering during construction that the signal at 104th and Western Avenue had already been previously upgraded.

**NEW ITEMS \$443,170.00**

Removal of Pull Box	4.00 EA	\$250.00 /EA	\$1,000.00
3" PVC Sch. 40 Plastic Conduit Bored	350.00 LF	\$39.20 /LF	\$13,720.00
Detection System (Radar) (Reclassified)	1.00 LS	\$422,780.00 /LS	\$422,780.00
Pull Box (Size I)	3.00 EA	\$1,190.00 /EA	\$3,570.00
Pull Box (Size II)	1.00 EA	\$2,100.00 /EA	\$2,100.00

**OVERRUN ITEMS \$18,820.00**

1 Way 4 Sec. Adj. Sig. HD. S-13	4.00 EA	\$1,650.00 /EA	\$6,600.00
Backplate	4.00 EA	\$200.00 /EA	\$800.00
5/C Traffic Signal Electrical Cable	500.00 LF	\$4.50 /LF	\$2,250.00
7/C Traffic Signal Electrical Cable	250.00 LF	\$5.00 /LF	\$1,250.00
21/C Traffic Signal Electrical Cable	500.00 LF	\$12.00 /LF	\$6,000.00
Mast Arm Mounted Signs (Alum.)	30.00 SF	\$64.00 /SF	\$1,920.00

**UNDERRUN ITEM -\$470,000.00**

Detection System (Radar)	-1.00 LS	\$470,000.00 /LS	-\$470,000.00
--------------------------	----------	------------------	---------------

CHANGE ORDER ACTIONS						
CHANGE ORDER NO.	(+ Overrun (-) Underrun Amount (\$)	%	Appropriated Amount (\$)	%	Supplemental Agreement Amount(\$)	%
1	-\$8,010.00	-0.76%	\$0.00	0.00%	\$0.00	0.00%
<b>TOTAL</b>	<b>-\$8,010.00</b>	<b>-0.76%</b>	<b>\$0.00</b>	<b>0.00%</b>	<b>\$0.00</b>	<b>0.00%</b>

## Change Orders with Cumulative Total of \$75,000 or Less (Information Only)

**August 01, 2022 Commission Meeting**

<b>Project Number:</b>	STP-258B(079)PM	<b>CO APPROVAL:</b>	Jun. 23, 2022	<b>AGENDA ITEM</b>
		<b>Contract ID:</b>	210060	<b>111N</b>
<b>Contractor :</b>	TREAS CONSTRUCTION INC	<b>Job Piece No.:</b>	29689(04)	
		<b>Highway No.:</b>	SH-125	
<b>Designer:</b>	OKLA. DEPT. OF TRANSPORTATION	<b>Div. / County.:</b>	08 / OTTAWA	
<b>Description:</b>	GRADE, DRAIN, SURFACE, AND BRIDGE SH-125: FROM 0.4 MILES WEST OF I-44, EXTEND EAST NEAR MIAMI. PROJECT LENGTH = 0.831 MILE			
<b>Contract Amount:</b>	\$6,372,281.16	<b>Funds Available:</b>	\$6,428,720.15	<b>Funds Paid(%) :</b> 31%
<b>Change Order</b>	3	<b>Original Time Used:</b>	48%	<b>Revised Time Used:</b> 48%

Change Order No. 3 approves a supplemental agreement and an additional appropriation in the amount of \$22,794.39.

Engineering: This change provides payment for the removal of concrete median barrier pay item required to remove the median barrier on I-44 to facilitate the construction of the new bridge and removal of the existing bridge due to this work being inadvertently omitted from the plans.

<b>NEW ITEM</b>	<b>\$22,794.39</b>
Removal of Concrete Median Barrier	233.00 LF      \$97.83 /LF      \$22,794.39

<b>CHANGE ORDER ACTIONS</b>						
CHANGE ORDER NO.	(+ Overrun (-) Underrun Amount (\$)	%	Appropriated Amount (\$)	%	Supplemental Agreement Amount(\$)	%
1	\$0.00	0.00%	\$0.00	0.00%	\$0.00	0.00%
2	\$33,644.60	0.53%	\$33,644.60	0.53%	\$33,644.60	0.53%
3	\$22,794.39	0.36%	\$22,794.39	0.36%	\$22,794.39	0.36%
<b>TOTAL</b>	<b>\$56,438.99</b>	<b>0.89%</b>	<b>\$56,438.99</b>	<b>0.89%</b>	<b>\$56,438.99</b>	<b>0.89%</b>

## Change Orders with Cumulative Total of \$75,000 or Less (Information Only)

**August 01, 2022 Commission Meeting**

<b>Project Number:</b>	STP-270C(041)PM	<b>CO APPROVAL:</b>	Jul. 08, 2022	<b>AGENDA ITEM</b>
		<b>Contract ID:</b>	210258	<b>1110</b>
<b>Contractor :</b>	J & R SAND COMPANY, INC.	<b>Job Piece No.:</b>	24241(07)	
		<b>Highway No.:</b>	SH-136	
<b>Designer:</b>	OKLA. DEPT. OF TRANSPORTATION	<b>Div. / County.:</b>	06 / TEXAS	
<b>Description:</b>	GRADE AND SURFACE SH-136: FROM THE TEXAS STATE LINE, EXTEND NORTH. PROJECT LENGTH = 4.469 MILES			
<b>Contract Amount:</b>	\$12,453,375.35	<b>Funds Available:</b>	\$12,461,190.35	<b>Funds Paid(%) :</b> 21%
<b>Change Order</b>	2	<b>Original Time Used:</b>	55%	<b>Revised Time Used:</b> 55%

Change Order No. 2 approves a supplemental agreement and an additional appropriation in the amount of \$7,815.00.

Site Requirement: This change provides payment for the painted traffic striping pay item required to provide temporary delineation throughout the project during construction in lieu of removable pavement marking tape as planned due to maintenance concerns.

<b>NEW ITEM</b>	<b>\$25,500.00</b>
Traffic Stripe (Paint) (4" Wide)	51,000.00 LF      \$0.50 /LF      \$25,500.00
<b>UNDERRUN ITEM</b>	<b>-\$17,685.00</b>
Removable Pavement Marking Tape (4" Wide)	-11,790.00 LF      \$1.50 /LF      -\$17,685.00

CHANGE ORDER ACTIONS						
CHANGE ORDER NO.	(+ Overrun (-) Underrun Amount (\$)	%	Appropriated Amount (\$)	%	Supplemental Agreement Amount(\$)	%
2	\$7,815.00	0.06%	\$7,815.00	0.06%	\$7,815.00	0.06%
<b>TOTAL</b>	<b>\$7,815.00</b>	<b>0.06%</b>	<b>\$7,815.00</b>	<b>0.06%</b>	<b>\$7,815.00</b>	<b>0.06%</b>

## Change Orders with Cumulative Total of \$75,000 or Less (Information Only)

**August 01, 2022 Commission Meeting**

<b>Project Number:</b>	STP-272B(258)IG	<b>CO APPROVAL:</b>	Jun. 30, 2022	<b>AGENDA ITEM</b>
		<b>Contract ID:</b>	190262	<b>111P</b>
<b>Contractor :</b>	BECCO CONTRACTORS, INC.	<b>Job Piece No.:</b>	30742(04)	
		<b>Highway No.:</b>	CITY STREET	
<b>Designer:</b>	DEWBERRY DESIGN GROUP, INC.	<b>Div. / County.:</b>	08 / TULSA	
<b>Description:</b>	GRADE, DRAIN, AND SURFACE CITY STREET (NORTH GARNETT ROAD): FROM EAST 96TH STREET NORTH, EXTEND NORTH IN THE CITY OF OWASSO. PROJECT LENGTH = 0.870 MILE			
<b>Contract Amount:</b>	\$8,897,000.00	<b>Funds Available:</b>	\$8,924,651.03	<b>Funds Paid(%) :</b> 91%
<b>Change Order</b>	3	<b>Original Time Used:</b>	136%	<b>Revised Time Used:</b> 136%

Change Order No. 3 approves a supplemental agreement resulting in an underrun to the contract in the amount of \$88,552.96.

**Site Requirement:** This change provides for the additional expense incurred by the contractor for returning various unused waterline fittings that were ordered and delivered to the project before discovering they would not be needed; for receiving various waterline fittings into the City of Owasso warehouse stock due to being ordered and delivered to the project before discovering they would not be needed; and for the additional work required to mow various areas throughout the project during construction due to the phased construction. This change documents the overrun and underrun of various pay items associated with the waterline installation due to various unforeseen site conditions experienced by the contractor during construction. Funding for the items to return and take waterline fittings into warehouse stock will be non-participating in nature.

<b>NEW ITEM</b>	<b>\$1,103.05</b>
Construction Miscellaneous (Mowing) 1.00 LS	\$1,103.05 /LS
<b>NEW ITEMS (NON-PARTICIPATING)</b>	<b>\$61,663.99</b>
Material Taken Into Warehouse Stock (Waterline Fittings) 1.00 LS	\$25,681.16 /LS
Construction Miscellaneous (Restocking Fee) 1.00 LS	\$35,982.83 /LS
<b>OVERRUN ITEMS (NON-PARTICIPATING)</b>	<b>\$47,100.00</b>
24" Polyvinyl Chloride (PVC) Pipe 320.00 LF	\$145.00 /LF
12" 90 Degree Fitting 1.00 EA	\$700.00 /EA
<b>UNDERRUN ITEMS (NON-PARTICIPATING)</b>	<b>-\$198,420.00</b>
20" Polyvinyl Chloride (PVC) Pipe -52.00 LF	\$135.00 /LF
8" Gate Valve -1.00 EA	\$1,100.00 /EA
12" Gate Valve -11.00 EA	\$2,000.00 /EA
20" Butterfly Valve -3.00 EA	\$5,200.00 /EA
24" Butterfly Valve -8.00 EA	\$9,500.00 /EA
24" 11 1/4 Degree Bend -8.00 EA	\$2,500.00 /EA
8" 45 Degree Fitting -14.00 EA	\$300.00 /EA
16" x 10" Reducer -1.00 EA	\$1,200.00 /EA
16" x 12" Reducer -1.00 EA	\$1,400.00 /EA
24" x 16" Reducer -1.00 EA	\$4,500.00 /EA
24" x 20" Reducer -1.00 EA	\$6,500.00 /EA
20" x 20" x 20" Tee -1.00 EA	\$6,700.00 /EA
24" x 24" x 8" Tee -1.00 EA	\$7,200.00 /EA

# Change Orders with Cumulative Total of \$75,000 or Less (Information Only)

**August 01, 2022 Commission Meeting**

<b>Project Number:</b>	STP-272B(258)IG	<b>CO APPROVAL:</b>	Jun. 30, 2022
		<b>Contract ID:</b>	190262

**UNDERRUN ITEMS (NON-PARTICIPATING) -\$198,420.00**

24" x 24" x 24" Tee -2.00 EA \$12,500.00 /EA -\$25,000.00

<b>CHANGE ORDER ACTIONS</b>						
CHANGE ORDER NO.	(+ Overrun (-) Underrun Amount (\$)	%	Appropriated Amount (\$)	%	Supplemental Agreement Amount(\$)	%
1	\$20,920.00	0.24%	\$20,920.00	0.24%	\$20,920.00	0.24%
2	\$6,731.03	0.08%	\$6,731.03	0.08%	\$6,731.03	0.08%
3	-\$88,552.96	-1.00%	\$0.00	0.00%	\$0.00	0.00%
<b>TOTAL</b>	<b>-\$60,901.93</b>	<b>-0.68%</b>	<b>\$27,651.03</b>	<b>0.31%</b>	<b>\$27,651.03</b>	<b>0.31%</b>

## Change Orders with Cumulative Total of \$75,000 or Less (Information Only)

### August 01, 2022 Commission Meeting

<b>Project Number:</b>	TAP-272F(339)IG	<b>CO APPROVAL:</b>	Jun. 21, 2022	<b>AGENDA ITEM</b>
		<b>Contract ID:</b>	210339	<b>111Q</b>
<b>Contractor :</b>	ACTION SAFETY SUPPLY CO., LLC	<b>Job Piece No.:</b>	33038(04)	
		<b>Highway No.:</b>	CITY STREET	
<b>Designer:</b>	BKL, INC.	<b>Div. / County.:</b>	08 / TULSA	
<b>Description:</b>	PEDESTRIAN IMPROVEMENTS (PROTECTED BIKE LANES) CITY STREETS (W 11TH STREET/W 12TH STREET): FROM SOUTHWEST BOULEVARD, EXTEND EAST IN THE CITY OF TULSA. PROJECT LENGTH = 0.940 MILE			
<b>Contract Amount:</b>	\$118,630.60	<b>Funds Available:</b>	\$140,290.60	<b>Funds Paid(%) :</b> 96%
<b>Change Order</b>	2	<b>Original Time Used:</b>	57%	<b>Revised Time Used:</b> 57%

Change Order No. 2 approves an additional appropriation in the amount of \$21,660.00.

Engineering: This change provides payment for the overrun of the plastic traffic striping pay item required to place stop bars throughout the project as planned due to an error in the plan quantity.

<b>OVERRUN ITEM</b>	<b>\$21,660.00</b>
Traffic Stripe (Plastic) (24" Wide)	1,444.00 LF      \$15.00 /LF      \$21,660.00

<b>CHANGE ORDER ACTIONS</b>						
CHANGE ORDER NO.	(+ Overrun (-) Underrun Amount (\$)	%	Appropriated Amount (\$)	%	Supplemental Agreement Amount(\$)	%
1	-\$455.00	-0.38%	\$0.00	0.00%	\$0.00	0.00%
2	\$21,660.00	18.26%	\$21,660.00	18.26%	\$0.00	0.00%
<b>TOTAL</b>	<b>\$21,205.00</b>	<b>17.87%</b>	<b>\$21,660.00</b>	<b>18.26%</b>	<b>\$0.00</b>	<b>0.00%</b>

## Change Orders with Cumulative Total of \$75,000 or Less (Information Only)

**August 01, 2022 Commission Meeting**

<b>Project Number:</b>	STP-272F(270)PM		<b>CO APPROVAL:</b>	Jul. 07, 2022	<b>AGENDA ITEM</b>
			<b>Contract ID:</b>	200333	<b>111R</b>
<b>Contractor :</b>	ACTION SAFETY SUPPLY CO., LLC		<b>Job Piece No.:</b>	33818(04)	
			<b>Highway No.:</b>	MULTIPLE LOCATIONS	
<b>Designer:</b>	GARVER ENGINEERING		<b>Div. / County.:</b>	08 / TULSA	
<b>Description:</b>	SAFETY IMPROVEMENT (SIGNING) I-44/I-244/US-412: AT MULTIPLE LOCATIONS IN TULSA AND SAND SPRINGS. PROJECT LENGTH = 5.698 MILES				
<b>Contract Amount:</b>	\$5,332,852.40	<b>Funds Available:</b>	\$5,380,016.60	<b>Funds Paid(%) :</b>	93%
<b>Change Order</b>	5	<b>Original Time Used:</b>	137%	<b>Revised Time Used:</b>	100%

Change Order No. 5 approves a supplemental agreement resulting in an underrun to the contract in the amount of \$2,784.00.

Engineering: This change provides for the powder coating pay items utilized to coat monotube Structure No. 2, 33, and 35 due to these structures being mistakenly powder coated as the result of a miscommunication with the contractor. This change documents the underrun of the cable barrier pay items due to the median cable barrier not needing to be removed and reset as planned to complete the proposed drainage work in the median. Funding for the powder coating items will be Federal and City non-participating in nature.

**NEW ITEMS (NON-PARTICIPATING)**

**\$48,600.00**

Powder Coat Type B1	2.00 EA	\$15,600.00 /EA	\$31,200.00
Powder Coat Type B2	1.00 EA	\$17,400.00 /EA	\$17,400.00

**UNDERRUN ITEMS**

**-\$51,384.00**

High-Tension Cable Barrier (TL-4)	-620.00 LF	\$13.20 /LF	-\$8,184.00
End Anchors	-6.00 EA	\$6,700.00 /EA	-\$40,200.00
High Tension Cable Barrier - Re-Tensioning	-5.00 EA	\$600.00 /EA	-\$3,000.00

**CHANGE ORDER ACTIONS**

CHANGE ORDER NO.	(+ Overrun (-) Underrun Amount (\$)	%	Appropriated Amount (\$)	%	Supplemental Agreement Amount(\$)	%
1	\$0.00	0.00%	\$0.00	0.00%	\$0.00	0.00%
2	\$47,164.20	0.88%	\$47,164.20	0.88%	\$47,164.20	0.88%
3	\$0.00	0.00%	\$0.00	0.00%	\$0.00	0.00%
4	-\$80,601.64	-1.51%	\$0.00	0.00%	\$0.00	0.00%
5	-\$2,784.00	-0.05%	\$0.00	0.00%	\$0.00	0.00%
<b>TOTAL</b>	<b>-\$36,221.44</b>	<b>-0.68%</b>	<b>\$47,164.20</b>	<b>0.88%</b>	<b>\$47,164.20</b>	<b>0.88%</b>



## Change Orders with Cumulative Total of \$75,000 or Less (Information Only)

### August 01, 2022 Commission Meeting

<b>Project Number:</b>	SBR-4400(072)SB	<b>CO APPROVAL:</b>	Jun. 29, 2022	<b>AGENDA ITEM</b>
		<b>Contract ID:</b>	210341	<b>111S</b>
<b>Contractor :</b>	BUILT RIGHT CONSTRUCTION, LLC	<b>Job Piece No.:</b>	34661(04)	
		<b>Highway No.:</b>	I-44	
<b>Designer:</b>	BENHAM DESIGN	<b>Div. / County.:</b>	08 / TULSA	
<b>Description:</b>	BRIDGE REHABILITATION I-44: OVER UNION PACIFIC RAILROAD, SERVICE ROAD, AND SHERIDAN ROAD, 0.4 MILES AND 0.6 MILES SOUTHWEST OF THE US-64 INTERCHANGE IN THE CITY OF TULSA. PROJECT LENGTH = 0.088 MILE			
<b>Contract Amount:</b>	\$2,674,206.47	<b>Funds Available:</b>	\$2,679,795.92	<b>Funds Paid(%) :</b> 62%
<b>Change Order</b>	1	<b>Original Time Used:</b>	41%	<b>Revised Time Used:</b> 41%

Change Order No. 1 approves a supplemental agreement and an additional appropriation in the amount of \$5,589.45.

Engineering: This change provides payment for the 8-inch multi-polymer traffic striping and arrows pay items required to restripe an existing gore area that had to be removed while detoured traffic was placed on it as planned due to this work being inadvertently omitted from the plans.

**NEW ITEMS**

**\$5,589.45**

Traffic Stripe (Multi-Poly.)(8" Wide)	3,100.00 LF	\$1.33 /LF	\$4,123.00
Traffic Stripe (Multi-Poly.)(Arrows)	5.00 EA	\$293.29 /EA	\$1,466.45

CHANGE ORDER ACTIONS						
CHANGE ORDER NO.	(+ Overrun (-) Underrun Amount (\$)	%	Appropriated Amount (\$)	%	Supplemental Agreement Amount(\$)	%
1	\$5,589.45	0.21%	\$5,589.45	0.21%	\$5,589.45	0.21%
<b>TOTAL</b>	<b>\$5,589.45</b>	<b>0.21%</b>	<b>\$5,589.45</b>	<b>0.21%</b>	<b>\$5,589.45</b>	<b>0.21%</b>

## Change Orders with Cumulative Total of \$75,000 or Less (Information Only)

**August 01, 2022 Commission Meeting**

<b>Project Number:</b>	NHPP-CRRS(007)PM	<b>CO APPROVAL:</b>	Jun. 21, 2022	<b>AGENDA ITEM</b>
		<b>Contract ID:</b>	210160	<b>111T</b>
<b>Contractor :</b>	BECCO CONTRACTORS, INC.	<b>Job Piece No.:</b>	32104(04)	
		<b>Highway No.:</b>	US-69	
<b>Designer:</b>	OKLA. DEPT. OF TRANSPORTATION	<b>Div. / County.:</b>	01 / WAGONER	
<b>Description:</b>	RESURFACE (ASPHALT) US-69: FROM THE MUSKOGEE COUNTY LINE, EXTEND NORTH. PROJECT LENGTH = 2.047 MILES			
<b>Contract Amount:</b>	\$3,157,000.00	<b>Funds Available:</b>	\$3,181,471.50	<b>Funds Paid(%) :</b> 98%
<b>Change Order</b>	1	<b>Original Time Used:</b>	100%	<b>Revised Time Used:</b> 100%

Change Order No. 1 approves an additional appropriation in the amount of \$24,471.50.

Site Requirement: This change provides payment for the final estimate due to the overrun of the rich intermediate layer pay item. Additional quantities of this item were required to complete the project as specified due to an underestimation of the contract amount.

The cost of this change is partially offset by the underrun of other items of work.

<b>OVERRUN ITEM</b>	<b>\$25,695.73</b>
Rich Intermediate Layer	250.69 TON      \$102.50 /TON      \$25,695.73

CHANGE ORDER ACTIONS						
CHANGE ORDER NO.	(+ Overrun (-) Underrun Amount (\$)	%	Appropriated Amount (\$)	%	Supplemental Agreement Amount(\$)	%
1	\$24,471.50	0.78%	\$24,471.50	0.78%	\$0.00	0.00%
<b>TOTAL</b>	<b>\$24,471.50</b>	<b>0.78%</b>	<b>\$24,471.50</b>	<b>0.78%</b>	<b>\$0.00</b>	<b>0.00%</b>

## Change Orders with Cumulative Total of \$75,000 or Less (Information Only)

### August 01, 2022 Commission Meeting

<b>Project Number:</b>	STP-275C(069)CI	<b>CO APPROVAL:</b>	Jun. 28, 2022	<b>AGENDA ITEM</b>
		<b>Contract ID:</b>	210294	<b>111U</b>
<b>Contractor :</b>	LOPP CONSTRUCTION, LLC	<b>Job Piece No.:</b>	32925(04)	
		<b>Highway No.:</b>	COUNTY ROAD	
<b>Designer:</b>	CED #7	<b>Div. / County.:</b>	05 / WASHITA	
<b>Description:</b>	BRIDGE AND APPROACHES COUNTY ROAD (EW-125): OVER UNNAMED CREEK, 0.6 MILES WEST OF THE SH-44 JUNCTION NEAR SENTINEL. PROJECT LENGTH = 0.161 MILE			
<b>Contract Amount:</b>	\$435,496.33	<b>Funds Available:</b>	\$440,223.13	<b>Funds Paid(%) :</b> 77%
<b>Change Order</b>	2	<b>Original Time Used:</b>	75%	<b>Revised Time Used:</b> 75%

Change Order No. 2 approves an additional appropriation in the amount of \$4,726.80.

Site Requirement: This change provides payment for the overrun of the structural excavation unclassified pay item required to remove and replace areas of unsuitable subgrade material around the concrete box's curtain walls and wingwall footings.

**OVERRUN ITEM**

**\$4,726.80**

Structural Excavation Unclassified 157.56 CY \$30.00 /CY \$4,726.80

CHANGE ORDER ACTIONS						
CHANGE ORDER NO.	(+ Overrun - Underrun Amount (\$)	%	Appropriated Amount (\$)	%	Supplemental Agreement Amount(\$)	%
1	\$0.00	0.00%	\$0.00	0.00%	\$0.00	0.00%
2	\$4,726.80	1.09%	\$4,726.80	1.09%	\$0.00	0.00%
<b>TOTAL</b>	<b>\$4,726.80</b>	<b>1.09%</b>	<b>\$4,726.80</b>	<b>1.09%</b>	<b>\$0.00</b>	<b>0.00%</b>

## Change Orders with Cumulative Total Greater than \$75,000

### AUGUST 01, 2022 Commission Meeting

ITEM	COUNTY	PROJECT NUMBER	FED OVER	CONTRACT	JPN	CHANGE ORDER	UNDER/ OVER RUN
112A	BEAVER	NHPP-017N(268)PM	<input type="checkbox"/>	220006	3106404	003	-\$57.00
112B	BECKHAM	NHPPI-4000-(098)PM	<input type="checkbox"/>	210007	3100104	003	-\$683,581.59
112C	BLAINE	CIRB-206C(036)RB	<input type="checkbox"/>	210127	2870404	004	\$289,243.34
112D	CARTER	STP-210B(089)3P	<input type="checkbox"/>	220087	3441904	001	\$85,213.86
112E	CHOCTAW	STP-112D(078)CI	<input type="checkbox"/>	180260	2482104	007	-\$21,622.03
112F	CLEVELAND	CIRB-214C(105)RB	<input type="checkbox"/>	210010	3112904	003	\$254,846.30
112G	COAL	CIRB-115C(074)RB	<input type="checkbox"/>	170298	2494304	002	\$14,814.43
112H	CREEK	STP-219B(054)SS	<input type="checkbox"/>	170254	2792504	008	\$63,072.80
112I	GRADY	NHPP-126N(187)PM	<input type="checkbox"/>	200279	2818204	003	\$24,453.41
112J	GREER	CIRB-228C(023)RB	<input type="checkbox"/>	210274	3003304	002	\$157,992.63
112K	JOHNSTON	STP-235C(052)CI	<input type="checkbox"/>	200313	3233104	004	\$2,019.41
112L	LINCOLN	STP-241C(073)PM	<input type="checkbox"/>	210111	2794704	006	\$177,443.28
112M	MARSHALL	STP-248C(036)PM	<input type="checkbox"/>	180203	2882804	006	-\$29,704.53
112N	MARSHALL	NHPP-248N(050)PM	<input type="checkbox"/>	200157	3127804	003	\$20,607.45
112O	MCCLAIN	STP-244C(072)PM	<input type="checkbox"/>	210082	2945904	005	\$9,905.92
112P	MCCLAIN	NHPPI-3500(094)PM	<input type="checkbox"/>	210030	3104504	005	\$336,707.18
112Q	MCCURTAIN	SSP-245N(068)PM / SSP-245N(071)PM	<input type="checkbox"/>	220181	3433307	001	\$91,000.00
112R	MCINTOSH	STP-246C(030)CI	<input type="checkbox"/>	170374	2937404	006	\$94,809.47
112S	NOWATA	STP-253F(047)CI	<input type="checkbox"/>	200021	3049104	001	\$95,444.48
112T	NOWATA	STP-253F(047)CI	<input type="checkbox"/>	200021	3049104	003	\$20,812.53
112U	OKFUSKEE	NHPPI-4000-(100)PM	<input type="checkbox"/>	200163	2100709	005	\$630,725.25
112V	OKLAHOMA	ACNHPPI-0040-5(382) / ACNHPPI-4000-(047)	<input type="checkbox"/>	170289	2032404	009	\$37,434.71
112W	OKLAHOMA	NHPPI-4400-(037)PM / NHPPI-4400- (039)PM / NHPPI-4400-(040)PM / NHPPI-4400-(041)PM / NHPPI-4400- (042)PM / NHPPI-4400-(043)PM	<input type="checkbox"/>	190120	3100604	016	\$252,052.45
112X	OSAGE	NHPP-257N(085)PM	<input type="checkbox"/>	210283	2423304	001	\$298,336.00
112Y	PAYNE	STP-260B(056)PM	<input type="checkbox"/>	210085	2986004	001	\$148,915.40
112Z	PITTSBURG	STP-261B(103)PM	<input type="checkbox"/>	210061	2924604	004	\$86,244.61
112AA	PITTSBURG	STP-261B(103)PM	<input type="checkbox"/>	210061	2924604	005	\$168,128.41
112BB	POTTAWATOMIE	STP-163C(328)PM	<input type="checkbox"/>	200292	2178807	004	\$48,864.03
112CC	SEQUOYAH	NHPPI-4000-(076)PM / NHPPI-4000- (075)PM / SBR-4000(080)SB	<input type="checkbox"/>	190186	2898804	003	\$93,561.90
112DD	TULSA	STP-272N(360)IG	<input type="checkbox"/>	220109	3331504	001	\$100,633.00

## Change Orders with Cumulative Total Greater than \$75,000

### August 01, 2022 Commission Meeting

<b>Project Number:</b>	NHPP-017N(268)PM			<b>AGENDA ITEM</b>	
			<b>Contract ID:</b>	220006	<b>112A</b>
<b>Contractor :</b>	J & R SAND COMPANY, INC.		<b>Job Piece No.:</b>	31064(04)	
			<b>Highway No.:</b>	SH-3	
<b>Designer:</b>	OKLA. DEPT. OF TRANSPORTATION		<b>Div. / County.:</b>	06 / BEAVER	
<b>Description:</b>	RESURFACE (ASPHALT) SH-3: FROM 4.9 MILES WEST OF THE SH-93 JUNCTION, EXTEND EAST NEAR BRYANS CORNER. PROJECT LENGTH = 4.900 MILES				
<b>Contract Amount:</b>	\$4,526,562.50	<b>Funds Available:</b>	\$4,831,706.00	<b>Funds Paid(%) :</b>	94%
<b>Change Order</b>	3	<b>Original Time Used:</b>	19%	<b>Revised Time Used:</b>	19%

Request approval of Change Order No. 3 for a supplemental agreement resulting in an underrun to the contract in the amount of \$57.00.

Site Requirement: This change reclassifies the unit price for a portion of the TBSC pay item to allow for the utilization of asphalt millings in lieu of TBSC as specified due to difficulties in obtaining the material.

<b>NEW ITEM</b>				<b>\$10,083.00</b>
Traffic Bound Surface Course Type E (Reclassified)(Millings)	201.66 TON	\$50.00 /TON		\$10,083.00
<b>UNDERRUN ITEM</b>				<b>-\$10,140.00</b>
Traffic Bound Surface Course Type E	-156.00 TON	\$65.00 /TON		-\$10,140.00

#### CHANGE ORDER ACTIONS

CHANGE ORDER NO.	(+) Overrun (-) Underrun Amount (\$)	%	Appropriated Amount (\$)	%	Supplemental Agreement Amount(\$)	%
1	\$37,642.50	0.83%	\$37,642.50	0.83%	\$37,642.50	0.83%
2	\$267,501.00	5.91%	\$267,501.00	5.91%	\$0.00	0.00%
3	-\$57.00	0.00%	\$0.00	0.00%	\$0.00	0.00%
4	\$0.00	0.00%	\$0.00	0.00%	\$0.00	0.00%
<b>TOTAL</b>	<b>\$305,086.50</b>	<b>6.74%</b>	<b>\$305,143.50</b>	<b>6.74%</b>	<b>\$37,642.50</b>	<b>0.83%</b>

## Change Orders with Cumulative Total Greater than \$75,000

**August 01, 2022 Commission Meeting**

<b>Project Number:</b>	NHPPI-4000-(098)PM	<b>Contract ID:</b>	210007	<b>AGENDA ITEM</b>
<b>Contractor :</b>	C3 CONSTRUCTION, INC.	<b>Job Piece No.:</b>	31001(04)	<b>112B</b>
		<b>Highway No.:</b>	I-40	
<b>Designer:</b>	EST	<b>Div. / County.:</b>	05 / BECKHAM	
<b>Description:</b>	BRIDGE REHABILITATION I-40: OVER NORTH FORK OF RED RIVER, 0.5 MILES SOUTH OF THE SH-152 INTERCHANGE IN SAYRE. PROJECT LENGTH = 0.247 MILE			
<b>Contract Amount:</b>	\$7,458,047.57	<b>Funds Available:</b>	\$7,549,327.97	<b>Funds Paid(%) :</b> 85%
<b>Change Order</b>	3	<b>Original Time Used:</b>	106%	<b>Revised Time Used:</b> 106%

Request approval of Change Order No. 3 for a supplemental agreement resulting in an underrun to the contract in the amount of \$683,581.59.

Site Requirement: This change provides for the unrecoverable expenses and lost overhead incurred by the contractor due to the significant underrun of the pneumatically placed mortar pay items due to the bridges not being as deteriorated as anticipated.

<b>NEW ITEM</b>	<b>\$75,950.76</b>
Pneumatically Placed Mortar (Lost Overhead)(Br. A & B)	826.45 SY      \$91.90 /SY      \$75,950.76
<b>UNDERRUN ITEMS</b>	<b>-\$759,532.34</b>
Pneumatically Placed Mortar (Bridge A)	-414.74 SY      \$919.03 /SY      -\$381,158.50
Pneumatically Placed Mortar (Bridge B)	-411.71 SY      \$919.03 /SY      -\$378,373.84

CHANGE ORDER ACTIONS						
CHANGE ORDER NO.	(+ Overrun (-) Underrun Amount (\$)	%	Appropriated Amount (\$)	%	Supplemental Agreement Amount(\$)	%
1	\$40,989.81	0.55%	\$40,989.81	0.55%	\$40,989.81	0.55%
2	\$29,328.15	0.39%	\$29,328.15	0.39%	\$29,328.15	0.39%
3	-\$683,581.59	-9.17%	\$0.00	0.00%	\$0.00	0.00%
4	\$9,488.28	0.13%	\$9,488.28	0.13%	\$9,488.28	0.13%
5	\$11,474.16	0.15%	\$11,474.16	0.15%	\$11,474.16	0.15%
<b>TOTAL</b>	<b>-\$592,301.19</b>	<b>-7.94%</b>	<b>\$91,280.40</b>	<b>1.22%</b>	<b>\$91,280.40</b>	<b>1.22%</b>

## Change Orders with Cumulative Total Greater than \$75,000

**August 01, 2022 Commission Meeting**

<b>Project Number:</b>	CIRB-206C(036)RB	<b>Contract ID:</b>	210127	<b>AGENDA ITEM</b>
<b>Contractor :</b>	THE CUMMINS CONSTRUCTION CO., INC.	<b>Job Piece No.:</b>	28704(04)	<b>112C</b>
		<b>Highway No.:</b>	COUNTY ROADS	
<b>Designer:</b>	MESHEK & ASSOCIATES, LLC.	<b>Div. / County.:</b>	05 / BLAINE	
<b>Description:</b>	GRADE, DRAIN, AND SURFACE COUNTY ROADS (EW-094 ROAD/AMERICAN HORSE LAKE ROAD/NS-252): FROM 7.5 MILES NORTH OF I-40, EXTEND NORTH ON NS-252 ROAD THEN EAST ON EW-094 ROAD NEAR GEARY. PROJECT LENGTH = 5.974 MILES			
<b>Contract Amount:</b>	\$6,893,690.12	<b>Funds Available:</b>	\$7,107,701.27	<b>Funds Paid(%) :</b> 79%
<b>Change Order</b>	4	<b>Original Time Used:</b>	103%	<b>Revised Time Used:</b> 85%

Request approval of Change Order No. 4 for an additional appropriation in the amount of \$289,243.34.

Site Requirement: This change provides payment for the additional expense incurred by the contractor due to the increase of the asphalt binder and fuel price indexes as provided for in the contract.

**NEW ITEMS**

**\$289,243.34**

Fuel Price Adjustment	1.00 LS	\$10,920.41 /LS	\$10,920.41
Asphalt Binder Price Adjustment	1.00 LS	\$278,322.93 /LS	\$278,322.93

CHANGE ORDER ACTIONS						
CHANGE ORDER NO.	(+ Overrun (-) Underrun Amount (\$)	%	Appropriated Amount (\$)	%	Supplemental Agreement Amount(\$)	%
1	\$186,336.15	2.70%	\$186,336.15	2.70%	\$0.00	0.00%
2	\$0.00	0.00%	\$0.00	0.00%	\$0.00	0.00%
3	\$27,675.00	0.40%	\$27,675.00	0.40%	\$25,740.00	0.37%
4	\$289,243.34	4.20%	\$289,243.34	4.20%	\$0.00	0.00%
<b>TOTAL</b>	<b>\$503,254.49</b>	<b>7.30%</b>	<b>\$503,254.49</b>	<b>7.30%</b>	<b>\$25,740.00</b>	<b>0.37%</b>

## Change Orders with Cumulative Total Greater than \$75,000

**August 01, 2022 Commission Meeting**

<b>Project Number:</b>	STP-210B(089)3P			<b>AGENDA ITEM</b>	
		<b>Contract ID:</b>	220087	<b>112D</b>	
<b>Contractor :</b>	OVERLAND CORPORATION	<b>Job Piece No.:</b>	34419(04)		
		<b>Highway No.:</b>	US-70		
<b>Designer:</b>	OKLA. DEPT. OF TRANSPORTATION	<b>Div. / County.:</b>	07 / CARTER		
<b>Description:</b>	RESURFACE (ASPHALT) US-70: FROM 1.7 MILES EAST OF THE US-70A JUNCTION, EXTEND EAST NEAR WILSON. PROJECT LENGTH = 1.700 MILES				
<b>Contract Amount:</b>	\$1,197,190.80	<b>Funds Available:</b>	\$1,197,190.80	<b>Funds Paid(%):</b>	0%
<b>Change Order</b>	1	<b>Original Time Used:</b>	0%	<b>Revised Time Used:</b>	0%

Request approval of Change Order No. 1 for an additional appropriation in the amount of \$85,213.86.

Site Requirement: This change provides payment for the additional expense incurred by the contractor due to the increase of the asphalt binder price index as provided for in the contract.

**NEW ITEM**

**\$85,213.86**

Asphalt Binder Price Adjustment	1.00 LS	\$85,213.86 /LS	\$85,213.86
---------------------------------	---------	-----------------	-------------

<b>CHANGE ORDER ACTIONS</b>						
CHANGE ORDER NO.	(+ Overrun (-) Underrun Amount (\$)	%	Appropriated Amount (\$)	%	Supplemental Agreement Amount(\$)	%
1	\$85,213.86	7.12%	\$85,213.86	7.12%	\$0.00	0.00%
<b>TOTAL</b>	<b>\$85,213.86</b>	<b>7.12%</b>	<b>\$85,213.86</b>	<b>7.12%</b>	<b>\$0.00</b>	<b>0.00%</b>



## Change Orders with Cumulative Total Greater than \$75,000

**August 01, 2022 Commission Meeting**

<b>Project Number:</b>	STP-112D(078)CI	<b>Contract ID:</b>	180260	<b>AGENDA ITEM</b>	
<b>Contractor :</b>	H & H BRIDGE COMPANY	<b>Job Piece No.:</b>	24821(04)	<b>112E</b>	
		<b>Highway No.:</b>	COUNTY ROAD		
<b>Designer:</b>	GUY ENGINEERING SERVICES, INC.	<b>Div. / County.:</b>	02 / CHOCTAW		
<b>Description:</b>	BRIDGE AND APPROACHES COUNTY ROAD (NS-4050): OVER MUDDY BOGGY CREEK, 4.7 MILES AND 5.0 MILES NORTH OF US-70 NEAR BOSWELL. PROJECT LENGTH = 1.215 MILES				
<b>Contract Amount:</b>	\$5,366,503.67	<b>Funds Available:</b>	\$5,774,074.71	<b>Funds Paid(%) :</b>	93%
<b>Change Order</b>	7	<b>Original Time Used:</b>	215%	<b>Revised Time Used:</b>	148%

Request approval of Change Order No. 7 for a supplemental agreement resulting in an underrun to the contract in the amount of \$21,622.03.

Site Requirement: This change provides for the additional work required to extend the guardrail at the south end of Bridge A to ensure the safety of the traveling public. This change documents the underrun of the prime coat pay item due to this item not being required to complete the project.

<b>NEW ITEM</b>	<b>\$25,702.97</b>
Construction Miscellaneous (Reset GETs) <span style="float: right;">1.00 LS</span>	\$25,702.97 /LS <span style="float: right;">\$25,702.97</span>
<b>OVERRUN ITEM</b>	<b>\$6,000.00</b>
Beam Guardrail W-Beam Single <span style="float: right;">300.00 LF</span>	\$20.00 /LF <span style="float: right;">\$6,000.00</span>
<b>UNDERRUN ITEM</b>	<b>-\$53,325.00</b>
Prime Coat <span style="float: right;">-10,665.00 GAL</span>	\$5.00 /GAL <span style="float: right;">-\$53,325.00</span>

<b>CHANGE ORDER ACTIONS</b>						
CHANGE ORDER NO.	(+ Overrun (-) Underrun Amount (\$)	%	Appropriated Amount (\$)	%	Supplemental Agreement Amount(\$)	%
1	\$33,646.94	0.63%	\$33,646.94	0.63%	\$33,646.94	0.63%
2	\$283,766.00	5.29%	\$283,766.00	5.29%	\$283,766.00	5.29%
3	\$82,050.00	1.53%	\$82,050.00	1.53%	\$27,050.00	0.50%
5	-\$12,485.16	-0.23%	\$0.00	0.00%	\$0.00	0.00%
6	\$8,108.10	0.15%	\$8,108.10	0.15%	\$8,108.10	0.15%
7	-\$21,622.03	-0.40%	\$0.00	0.00%	\$0.00	0.00%
<b>TOTAL</b>	<b>\$373,463.85</b>	<b>6.96%</b>	<b>\$407,571.04</b>	<b>7.59%</b>	<b>\$352,571.04</b>	<b>6.57%</b>

## Change Orders with Cumulative Total Greater than \$75,000

**August 01, 2022 Commission Meeting**

<b>Project Number:</b>	CIRB-214C(105)RB	<b>Contract ID:</b>	210010	<b>AGENDA ITEM</b>
<b>Contractor :</b>	T.J. CAMPBELL CONSTRUCTION COMPANY	<b>Job Piece No.:</b>	31129(04)	<b>112F</b>
		<b>Highway No.:</b>	COUNTY ROAD	
<b>Designer:</b>	EST	<b>Div. / County.:</b>	03 / CLEVELAND	
<b>Description:</b>	GRADE, DRAIN, AND SURFACE COUNTY ROAD (156TH AVENUE S.E./NS-325): FROM MAGUIRE ROAD, EXTEND NORTH NEAR ETOWAH. PROJECT LENGTH = 3.742 MILES			
<b>Contract Amount:</b>	\$4,208,829.61	<b>Funds Available:</b>	\$4,225,377.38	<b>Funds Paid(%) :</b> 100%
<b>Change Order</b>	3	<b>Original Time Used:</b>	104%	<b>Revised Time Used:</b> 104%

Request approval of Change Order No. 3 for an additional appropriation in the amount of \$254,846.30.

Site Requirement: This change provides payment for the additional expense incurred by the contractor due to the increase of the asphalt binder and fuel price indexes as provided for in the contract.

**NEW ITEMS**

**\$254,846.30**

Asphalt Binder Price Adjustment	1.00 LS	\$243,196.80 /LS	\$243,196.80
Fuel Price Adjustment	1.00 LS	\$11,649.50 /LS	\$11,649.50

<b>CHANGE ORDER ACTIONS</b>						
CHANGE ORDER NO.	(+ Overrun - Underrun Amount (\$)	%	Appropriated Amount (\$)	%	Supplemental Agreement Amount(\$)	%
1	\$5,500.17	0.13%	\$5,500.17	0.13%	\$5,500.17	0.13%
2	\$11,047.60	0.26%	\$11,047.60	0.26%	\$11,047.60	0.26%
3	\$254,846.30	6.06%	\$254,846.30	6.06%	\$0.00	0.00%
<b>TOTAL</b>	<b>\$271,394.07</b>	<b>6.45%</b>	<b>\$271,394.07</b>	<b>6.45%</b>	<b>\$16,547.77</b>	<b>0.39%</b>

## Change Orders with Cumulative Total Greater than \$75,000

**August 01, 2022 Commission Meeting**

<b>Project Number:</b>	CIRB-115C(074)RB	<b>Contract ID:</b>	170298	<b>AGENDA ITEM</b>	
<b>Contractor :</b>	THE CUMMINS CONSTRUCTION CO., INC.	<b>Job Piece No.:</b>	24943(04)	<b>112G</b>	
		<b>Highway No.:</b>	COUNTY ROAD		
<b>Designer:</b>	BENHAM DESIGN, LLC.	<b>Div. / County.:</b>	03 / COAL		
<b>Description:</b>	GRADE, DRAIN, SURFACE, AND BRIDGE COUNTY ROAD (NS-369): FROM SH-3, EXTEND SOUTH NEAR TUPELO. PROJECT LENGTH = 2.964 MILES				
<b>Contract Amount:</b>	\$3,854,509.82	<b>Funds Available:</b>	\$3,929,467.03	<b>Funds Paid(%) :</b>	100%
<b>Change Order</b>	2	<b>Original Time Used:</b>	138%	<b>Revised Time Used:</b>	125%

Request approval of Change Order No. 2 for a supplemental agreement and an additional appropriation in the amount of \$14,814.43.

Site Requirement: This change provides payment for the utilization of portland cement to stabilize the roadway subgrade in lieu of the fly ash material specified due to soil classification test results; and for the utilization of CLSM to backfill the abutments of Bridge A in lieu of unclassified backfill material as planned to prevent settlement. This change provides for the utilization of trackless tack material to seal the aggregate base in lieu of prime coat as planned due to a request made by the contractor. This change alters the method of measurement for the structural excavation unclassified pay item from measured to plan quantity. This change extends the contract time forty-one days due to weather related delays, requests by the Resident to suspend work during holidays and other local events, and utility related delays.

<b>NEW ITEMS</b>			<b>\$222,012.50</b>
Portland Cement	1,100.00 TON	\$165.50 /TON	\$182,050.00
NT Tack Material	7,250.00 GAL	\$3.25 /GAL	\$23,562.50
CLSM Backfill	82.00 CY	\$200.00 /CY	\$16,400.00
<b>UNDERRUN ITEMS</b>			<b>-\$207,198.07</b>
Fly Ash	-2,199.45 TON	\$73.60 /TON	-\$161,879.52
Prime Coat	-12,051.00 GAL	\$3.55 /GAL	-\$42,781.05
Unclassified Backfill	-50.00 CY	\$50.75 /CY	-\$2,537.50

CHANGE ORDER ACTIONS						
CHANGE ORDER NO.	(+) Overrun (-) Underrun Amount (\$)	%	Appropriated Amount (\$)	%	Supplemental Agreement Amount(\$)	%
1	\$74,957.21	1.94%	\$74,957.21	1.94%	\$74,957.21	1.94%
2	\$14,814.43	0.38%	\$14,814.43	0.38%	\$14,814.43	0.38%
<b>TOTAL</b>	<b>\$89,771.64</b>	<b>2.33%</b>	<b>\$89,771.64</b>	<b>2.33%</b>	<b>\$89,771.64</b>	<b>2.33%</b>

## Change Orders with Cumulative Total Greater than \$75,000

### August 01, 2022 Commission Meeting

<b>Project Number:</b>	STP-219B(054)SS				<b>AGENDA ITEM</b>
			<b>Contract ID:</b>	170254	<b>112H</b>
<b>Contractor :</b>	MANHATTAN ROAD & BRIDGE COMPANY		<b>Job Piece No.:</b>	27925(04)	
			<b>Highway No.:</b>	SH-48	
<b>Designer:</b>	CEC CORPORATION		<b>Div. / County.:</b>	08 / CREEK	
<b>Description:</b>	BRIDGE AND APPROACHES SH-48: OVER CIMARRON RIVER, 2.6 MILES NORTH OF THE SH-51 INTERSECTION NEAR MANNFORD. PROJECT LENGTH = 0.709 MILE				
<b>Contract Amount:</b>	\$8,683,795.40	<b>Funds Available:</b>	\$9,483,099.70	<b>Funds Paid(%) :</b>	100%
<b>Change Order</b>	8	<b>Original Time Used:</b>	107%	<b>Revised Time Used:</b>	100%

Request approval of Change Order No. 8 for an additional appropriation in the amount of \$63,072.80.

Site Requirement: This change provides payment for the overrun of the riprap pay item required to provide adequate erosion control along the causeway of Bridge A due to the proximity of the Keystone Lake overflow.

**OVERRUN ITEM**

**\$63,072.80**

Type I-A Plain Riprap 1,576.82 TON \$40.00 /TON \$63,072.80

CHANGE ORDER ACTIONS						
CHANGE ORDER NO.	(+) Overrun (-) Underrun Amount (\$)	%	Appropriated Amount (\$)	%	Supplemental Agreement Amount(\$)	%
1	\$302,912.48	3.49%	\$302,912.48	3.49%	\$302,912.48	3.49%
2	\$23,793.50	0.27%	\$23,793.50	0.27%	\$9,100.00	0.10%
3	\$63,900.00	0.74%	\$63,900.00	0.74%	\$63,900.00	0.74%
4	\$301,560.50	3.47%	\$301,560.50	3.47%	\$0.00	0.00%
5	\$15,431.50	0.18%	\$15,431.50	0.18%	\$15,431.50	0.18%
6	\$91,706.32	1.06%	\$91,706.32	1.06%	\$0.00	0.00%
8	\$63,072.80	0.73%	\$63,072.80	0.73%	\$0.00	0.00%
<b>TOTAL</b>	<b>\$862,377.10</b>	<b>9.93%</b>	<b>\$862,377.10</b>	<b>9.93%</b>	<b>\$391,343.98</b>	<b>4.51%</b>

## Change Orders with Cumulative Total Greater than \$75,000

**August 01, 2022 Commission Meeting**

<b>Project Number:</b>	NHPP-126N(187)PM				<b>AGENDA ITEM</b>
		<b>Contract ID:</b>	200279		<b>112I</b>
<b>Contractor :</b>	MANHATTAN ROAD & BRIDGE COMPANY		<b>Job Piece No.:</b>	28182(04)	
			<b>Highway No.:</b>	US-62	
<b>Designer:</b>	WHITE ENGINEERING ASSOCIATES, INC.		<b>Div. / County.:</b>	07 / GRADY	
<b>Description:</b>	BRIDGE AND APPROACHES US-62: OVER WASHITA RIVER, 0.3 MILES EAST OF THE I-44 INTERCHANGE IN CHICKASHA. PROJECT LENGTH = 0.704 MILES				
<b>Contract Amount:</b>	\$12,459,607.00	<b>Funds Available:</b>	\$12,605,180.55	<b>Funds Paid(%) :</b>	99%
<b>Change Order</b>	3	<b>Original Time Used:</b>	104%	<b>Revised Time Used:</b>	104%

Request approval of Change Order No. 3 for an additional appropriation in the amount of \$24,453.41.

Site Requirement: This change provides payment for the bridge smoothness incentive earned by the contractor for exceptionally smooth bridge deck and approach slabs on Bridges A and B as defined in the contract.

**NEW ITEM**

**\$24,453.41**

Pavement / Bridge Smoothness Adjustment 1.00 LS \$24,453.41 /LS \$24,453.41

CHANGE ORDER ACTIONS						
CHANGE ORDER NO.	(+ Overrun (-) Underrun Amount (\$)	%	Appropriated Amount (\$)	%	Supplemental Agreement Amount(\$)	%
1	\$55,453.85	0.45%	\$55,453.85	0.45%	\$55,453.85	0.45%
2	\$90,119.70	0.72%	\$90,119.70	0.72%	\$0.00	0.00%
3	\$24,453.41	0.20%	\$24,453.41	0.20%	\$0.00	0.00%
<b>TOTAL</b>	<b>\$170,026.96</b>	<b>1.36%</b>	<b>\$170,026.96</b>	<b>1.36%</b>	<b>\$55,453.85</b>	<b>0.45%</b>

## Change Orders with Cumulative Total Greater than \$75,000

**August 01, 2022 Commission Meeting**

<b>Project Number:</b>	CIRB-228C(023)RB			<b>AGENDA ITEM</b>
		<b>Contract ID:</b>	210274	<b>112J</b>
<b>Contractor :</b>	CASWELL CONTRACTING, INC.	<b>Job Piece No.:</b>	30033(04)	
		<b>Highway No.:</b>	COUNTY ROAD	
<b>Designer:</b>	CED #7	<b>Div. / County.:</b>	05 / GREER	
<b>Description:</b>	GRADE, DRAIN, AND SURFACE COUNTY ROAD (EW-135): FROM THE US-283 JUNCTION, EXTEND EAST NEAR WILLOW. PROJECT LENGTH = 3.982 MILES			
<b>Contract Amount:</b>	\$3,839,213.08	<b>Funds Available:</b>	\$3,839,213.08	<b>Funds Paid(%) :</b> 94%
<b>Change Order</b>	2	<b>Original Time Used:</b>	110%	<b>Revised Time Used:</b> 110%

Request approval of Change Order No. 2 for an additional appropriation in the amount of \$157,992.63.

Site Requirement: This change provides payment for the additional expense incurred by the contractor due to the increase of the asphalt binder price index as provided for in the contract.

**NEW ITEM**

**\$157,992.63**

Asphalt Binder Price Adjustment	1.00 LS	\$157,992.63 /LS	\$157,992.63
---------------------------------	---------	------------------	--------------

CHANGE ORDER ACTIONS						
CHANGE ORDER NO.	(+) Overrun (-) Underrun Amount (\$)	%	Appropriated Amount (\$)	%	Supplemental Agreement Amount(\$)	%
1	-\$9,330.76	-0.24%	\$0.00	0.00%	\$0.00	0.00%
2	\$157,992.63	4.12%	\$157,992.63	4.12%	\$0.00	0.00%
<b>TOTAL</b>	<b>\$148,661.87</b>	<b>3.87%</b>	<b>\$157,992.63</b>	<b>4.12%</b>	<b>\$0.00</b>	<b>0.00%</b>

## Change Orders with Cumulative Total Greater than \$75,000

### August 01, 2022 Commission Meeting

<b>Project Number:</b>	STP-235C(052)CI				<b>AGENDA ITEM</b>
			<b>Contract ID:</b>	200313	<b>112K</b>
<b>Contractor :</b>	OVERLAND CORPORATION		<b>Job Piece No.:</b>	32331(04)	
			<b>Highway No.:</b>	COUNTY ROAD	
<b>Designer:</b>	CED #4		<b>Div. / County.:</b>	03 / JOHNSTON	
<b>Description:</b>	RESURFACE (ASPHALT) COUNTY ROAD (NS-359); FROM THE SH-78 JUNCTION, EXTEND NORTH NEAR TISHOMINGO. PROJECT LENGTH = 5.292 MILES				
<b>Contract Amount:</b>	\$1,285,692.35	<b>Funds Available:</b>	\$1,358,783.83	<b>Funds Paid(%) :</b>	99%
<b>Change Order</b>	4	<b>Original Time Used:</b>	122%	<b>Revised Time Used:</b>	100%

Request approval of Change Order No. 4 for an additional appropriation in the amount of \$2,019.41.

Site Requirement: This change provides payment for the final estimate due to the overrun of the construction sign pay item. Additional quantities of this item were required to provide adequate direction to the traveling public during construction due to an apparent underestimation of the contract amount.

The cost of this change is partially offset by the underrun of other items of work.

**OVERRUN ITEM**

**\$4,661.40**

Construction Signs 6.26 SF to 15.99 SF 914.00 SD \$5.10 /SD \$4,661.40

<b>CHANGE ORDER ACTIONS</b>						
CHANGE ORDER NO.	(+ Overrun (-) Underrun Amount (\$)	%	Appropriated Amount (\$)	%	Supplemental Agreement Amount(\$)	%
1	\$0.00	0.00%	\$0.00	0.00%	\$0.00	0.00%
2	\$73,091.48	5.68%	\$73,091.48	5.68%	\$0.00	0.00%
3	\$0.00	0.00%	\$0.00	0.00%	\$0.00	0.00%
4	\$2,019.41	0.16%	\$2,019.41	0.16%	\$0.00	0.00%
<b>TOTAL</b>	<b>\$75,110.89</b>	<b>5.84%</b>	<b>\$75,110.89</b>	<b>5.84%</b>	<b>\$0.00</b>	<b>0.00%</b>

## Change Orders with Cumulative Total Greater than \$75,000

**August 01, 2022 Commission Meeting**

<b>Project Number:</b>	STP-241C(073)PM	<b>Contract ID:</b>	210111	<b>AGENDA ITEM</b>
<b>Contractor :</b>	HASKELL LEMON CONSTRUCTION CO.	<b>Job Piece No.:</b>	27947(04)	<b>112L</b>
		<b>Highway No.:</b>	SH-66	
<b>Designer:</b>	CHIANG, PATEL, & YERBY, INC.	<b>Div. / County.:</b>	03 / LINCOLN	
<b>Description:</b>	WIDEN AND RESURFACE SH-66: FROM THE OKLAHOMA COUNTY LINE, EXTEND EAST NEAR WELLSTON. PROJECT LENGTH = 2.848 MILES			
<b>Contract Amount:</b>	\$6,999,820.00	<b>Funds Available:</b>	\$7,079,673.15	<b>Funds Paid(%) :</b> 21%
<b>Change Order</b>	6	<b>Original Time Used:</b>	54%	<b>Revised Time Used:</b> 53%

Request approval of Change Order No. 6 for a supplemental agreement and an additional appropriation in the amount of \$177,443.28.

Site Requirement: This change provides payment for the removal of concrete pavement pay item required to remove the existing roadway as planned due to discovering during construction that there is concrete beneath the existing asphalt. This change extends the contract time fifteen days to complete this additional work.

**NEW ITEM**

**\$177,443.28**

Removal of Concrete Pavement 13,566.00 SY \$13.08 /SY \$177,443.28

CHANGE ORDER ACTIONS						
CHANGE ORDER NO.	(+) Overrun (-) Underrun Amount (\$)	%	Appropriated Amount (\$)	%	Supplemental Agreement Amount(\$)	%
1	\$0.00	0.00%	\$0.00	0.00%	\$0.00	0.00%
2	\$20,900.00	0.30%	\$20,900.00	0.30%	\$20,900.00	0.30%
3	\$15,468.79	0.22%	\$15,468.79	0.22%	\$15,468.79	0.22%
4	\$1,200.00	0.02%	\$1,200.00	0.02%	\$1,200.00	0.02%
5	\$12,644.36	0.18%	\$12,644.36	0.18%	\$12,644.36	0.18%
6	\$177,443.28	2.53%	\$177,443.28	2.53%	\$177,443.28	2.53%
7	\$29,640.00	0.42%	\$29,640.00	0.42%	\$29,640.00	0.42%
<b>TOTAL</b>	<b>\$257,296.43</b>	<b>3.68%</b>	<b>\$257,296.43</b>	<b>3.68%</b>	<b>\$257,296.43</b>	<b>3.68%</b>



## Change Orders with Cumulative Total Greater than \$75,000

**August 01, 2022 Commission Meeting**

<b>Project Number:</b>	STP-248C(036)PM				<b>AGENDA ITEM</b>
			<b>Contract ID:</b>	180203	<b>112M</b>
<b>Contractor :</b>	JENSEN CONSTRUCTION COMPANY		<b>Job Piece No.:</b>	28828(04)	
			<b>Highway No.:</b>	US-377 / SH-99	
<b>Designer:</b>	WHITE ENGINEERING ASSOCIATES, INC.		<b>Div. / County.:</b>	02 / MARSHALL	
<b>Description:</b>	BRIDGE AND APPROACHES US-377/SH-99: OVER LAKE TEXOMA (WILLIS BRIDGE), ON THE TEXAS STATE LINE NEAR WILLIS. PROJECT LENGTH = 1.669 MILES				
<b>Contract Amount:</b>	\$43,256,556.24	<b>Funds Available:</b>	\$43,720,518.02	<b>Funds Paid(%) :</b>	80%
<b>Change Order</b>	6	<b>Original Time Used:</b>	106%	<b>Revised Time Used:</b>	88%

Request approval of Change Order No. 6 for a supplemental agreement resulting in an underrun to the contract in the amount of \$29,704.53.

Scope: This change provides for the utilization of asphalt base course in lieu of cement treated base under the proposed roadway and temporary concrete paving for temporary widening at various locations throughout the project as planned due to a request made by the contractor and approved by the Department. This change extends the contract time fourteen days to replace areas of the existing shoulder as outlined on Change Order No. 1.

<b>NEW ITEM</b>	<b>\$493,407.00</b>
Superpave, Type S3 (PG 64-22 OK)	2,410.79 TON      \$100.00 /TON      \$241,079.00
Superpave, Type S3 (PG 64-22 OK)	2,523.28 TON      \$100.00 /TON      \$252,328.00
<b>UNDERRUN ITEMS</b>	<b>-\$523,111.53</b>
Cement Treated Base	-9,935.41 SY      \$22.40 /SY      -\$222,553.18
Cement Treated Base	-10,222.00 SY      \$22.40 /SY      -\$228,972.80
P. C. Concrete Pavement (Placement)	-472.60 SY      \$41.50 /SY      -\$19,612.90
P. C. Concrete Pavement (Placement)	-595.80 SY      \$31.75 /SY      -\$18,916.65
P. C. Concrete for Pavement	-91.40 CY      \$160.00 /CY      -\$14,624.00
P. C. Concrete for Pavement	-115.20 CY      \$160.00 /CY      -\$18,432.00

CHANGE ORDER ACTIONS						
CHANGE ORDER NO.	(+ Overrun (-) Underrun Amount (\$)	%	Appropriated Amount (\$)	%	Supplemental Agreement Amount(\$)	%
1	\$222,059.97	0.51%	\$222,059.97	0.51%	\$0.00	0.00%
2	\$200,982.27	0.46%	\$200,982.27	0.46%	\$200,982.27	0.46%
3	\$40,919.54	0.09%	\$40,919.54	0.09%	\$40,919.54	0.09%
4	-\$8,041.92	-0.02%	\$0.00	0.00%	\$0.00	0.00%
5	\$0.00	0.00%	\$0.00	0.00%	\$0.00	0.00%
6	-\$29,704.53	-0.07%	\$0.00	0.00%	\$0.00	0.00%
<b>TOTAL</b>	<b>\$426,215.33</b>	<b>0.99%</b>	<b>\$463,961.78</b>	<b>1.07%</b>	<b>\$241,901.81</b>	<b>0.56%</b>

## Change Orders with Cumulative Total Greater than \$75,000

**August 01, 2022 Commission Meeting**

<b>Project Number:</b>	NHPP-248N(050)PM				<b>AGENDA ITEM</b>
<b>Contractor :</b>	OVERLAND CORPORATION		<b>Contract ID:</b>	200157	112N
			<b>Job Piece No.:</b>	31278(04)	
			<b>Highway No.:</b>	US-70	
<b>Designer:</b>	OKLA. DEPT. OF TRANSPORTATION		<b>Div. / County.:</b>	02 / MARSHALL	
<b>Description:</b>	WIDEN AND RESURFACE US-70: FROM 1.9 MILES EAST OF THE CARTER COUNTY LINE, EXTEND EAST NEAR MADILL. PROJECT LENGTH = 5.227 MILES				
<b>Contract Amount:</b>	\$8,382,350.95	<b>Funds Available:</b>	\$8,451,585.74	<b>Funds Paid(%) :</b>	88%
<b>Change Order</b>	3	<b>Original Time Used:</b>	112%	<b>Revised Time Used:</b>	103%

Request approval of Change Order No. 3 for a supplemental agreement and an additional appropriation in the amount of \$20,607.45.

Site Requirement: This change provides payment for the unrecoverable expenses and lost overhead incurred by the contractor due to the significant underrun of the solid slab sodding pay item.

**NEW ITEM**

**\$20,607.45**

Solid Slab Sodding (Lost Overhead)	128,796.56 SY	\$0.16 /SY	\$20,607.45
------------------------------------	---------------	------------	-------------

<b>CHANGE ORDER ACTIONS</b>						
CHANGE ORDER NO.	(+ Overrun - Underrun Amount (\$)	%	Appropriated Amount (\$)	%	Supplemental Agreement Amount(\$)	%
1	\$69,234.79	0.83%	\$69,234.79	0.83%	\$49,221.76	0.59%
3	\$20,607.45	0.25%	\$20,607.45	0.25%	\$20,607.45	0.25%
<b>TOTAL</b>	<b>\$89,842.24</b>	<b>1.07%</b>	<b>\$89,842.24</b>	<b>1.07%</b>	<b>\$69,829.21</b>	<b>0.83%</b>

## Change Orders with Cumulative Total Greater than \$75,000

### August 01, 2022 Commission Meeting

<b>Project Number:</b>	STP-244C(072)PM				<b>AGENDA ITEM</b>
			<b>Contract ID:</b>	210082	<b>1120</b>
<b>Contractor :</b>	SILVER STAR CONSTRUCTION COMPANY, INC.		<b>Job Piece No.:</b>	29459(04)	
			<b>Highway No.:</b>	SH-59	
<b>Designer:</b>	OKLA. DEPT. OF TRANSPORTATION		<b>Div. / County.:</b>	03 / MCCLAIN	
<b>Description:</b>	GRADE, DRAIN, SURFACE, AND BRIDGE SH-59: FROM 5.6 MILES SOUTH OF THE SH-39 JUNCTION, EXTEND NORTH NEAR CRINER. PROJECT LENGTH = 0.857 MILE				
<b>Contract Amount:</b>	\$3,455,100.00	<b>Funds Available:</b>	\$3,590,256.14	<b>Funds Paid(%) :</b>	61%
<b>Change Order</b>	5	<b>Original Time Used:</b>	92%	<b>Revised Time Used:</b>	81%

Request approval of Change Order No. 5 for a supplemental agreement and an additional appropriation in the amount of \$9,905.92.

Site Requirement: This change provides payment for the overrun and reclassification of the unit price for the outlet lateral headwall pay item due to encountering more areas of groundwater than anticipated, and due to the contractor having to remobilize to complete this work. This change extends the contract time five days to complete this additional work.

<b>NEW ITEM</b>			<b>\$11,095.92</b>
Outlet Lateral Headwall (Reclassified)	8.00 EA	\$1,386.99 /EA	\$11,095.92
<b>UNDERRUN ITEM</b>			<b>-\$1,190.00</b>
Outlet Lateral Headwall	-2.00 EA	\$595.00 /EA	-\$1,190.00

CHANGE ORDER ACTIONS						
CHANGE ORDER NO.	(+ Overrun (-) Underrun Amount (\$)	%	Appropriated Amount (\$)	%	Supplemental Agreement Amount(\$)	%
1	\$0.00	0.00%	\$0.00	0.00%	\$0.00	0.00%
2	\$0.00	0.00%	\$0.00	0.00%	\$0.00	0.00%
3	\$135,156.14	3.91%	\$135,156.14	3.91%	\$135,156.14	3.91%
4	\$0.00	0.00%	\$0.00	0.00%	\$0.00	0.00%
5	\$9,905.92	0.29%	\$9,905.92	0.29%	\$9,905.92	0.29%
<b>TOTAL</b>	<b>\$145,062.06</b>	<b>4.20%</b>	<b>\$145,062.06</b>	<b>4.20%</b>	<b>\$145,062.06</b>	<b>4.20%</b>

## Change Orders with Cumulative Total Greater than \$75,000

**August 01, 2022 Commission Meeting**

<b>Project Number:</b>	NHPPI-3500(094)PM				<b>AGENDA ITEM</b>
			<b>Contract ID:</b>	210030	<b>112P</b>
<b>Contractor :</b>	IHC SCOTT, INC.		<b>Job Piece No.:</b>	31045(04)	
			<b>Highway No.:</b>	I-35	
<b>Designer:</b>	OKLA. DEPT. OF TRANSPORTATION		<b>Div. / County.:</b>	03 / MCCLAIN	
<b>Description:</b>	PAVEMENT REHABILITATION (A.C. AND P.C.) I-35: FROM 1.1 MILES SOUTH OF THE SH-59 JUNCTION, EXTEND NORTH NEAR WAYNE. PROJECT LENGTH = 2.102 MILES				
<b>Contract Amount:</b>	\$12,287,440.03	<b>Funds Available:</b>	\$12,774,254.81	<b>Funds Paid(%) :</b>	100%
<b>Change Order</b>	5	<b>Original Time Used:</b>	154%	<b>Revised Time Used:</b>	145%

Request approval of Change Order No. 5 for a supplemental agreement and an additional appropriation in the amount of \$336,707.18.

Site Requirement: This change provides payment for the additional work required to mill and overlay the northbound and southbound incidental areas on the south end of the project due to becoming more deteriorated during construction than anticipated. This change extends the contract time eight days to complete this additional work.

<b>NEW ITEMS</b>			<b>\$336,707.18</b>
Cold Milling Pavement	9,385.00 SY	\$12.65 /SY	\$118,720.25
Superpave, Type S4 (PG 76-28 OK)	1,035.00 TON	\$186.34 /TON	\$192,861.90
Construction Traffic Control	1.00 LS	\$17,756.63 /LS	\$17,756.63
Traffic Stripe (Multi-Poly.)(6" Wide)	6,760.00 LF	\$1.09 /LF	\$7,368.40

CHANGE ORDER ACTIONS						
CHANGE ORDER NO.	(+ Overrun (-) Underrun Amount (\$)	%	Appropriated Amount (\$)	%	Supplemental Agreement Amount(\$)	%
1	\$103,046.40	0.84%	\$103,046.40	0.84%	\$103,046.40	0.84%
2	\$11,286.00	0.09%	\$11,286.00	0.09%	\$11,286.00	0.09%
3	\$370,106.38	3.01%	\$370,106.38	3.01%	\$116,755.80	0.95%
4	\$2,376.00	0.02%	\$2,376.00	0.02%	\$2,376.00	0.02%
5	\$336,707.18	2.74%	\$336,707.18	2.74%	\$336,707.18	2.74%
<b>TOTAL</b>	<b>\$823,521.96</b>	<b>6.70%</b>	<b>\$823,521.96</b>	<b>6.70%</b>	<b>\$570,171.38</b>	<b>4.64%</b>

## Change Orders with Cumulative Total Greater than \$75,000

### August 01, 2022 Commission Meeting

<b>Project Number:</b>	SSP-245N(068)PM / SSP-245N(071)PM	<b>Contract ID:</b>	220181	<b>AGENDA ITEM</b>
<b>Contractor :</b>	THE CUMMINS CONSTRUCTION CO., INC.	<b>Job Piece No.:</b>	34333(07)	<b>112Q</b>
		<b>Highway No.:</b>	US-259	
<b>Designer:</b>	OKLA. DEPT. OF TRANSPORTATION	<b>Div. / County.:</b>	02 / MCCURTAIN	
<b>Description:</b>	INTERSECTION MODIFICATION AND TRAFFIC SIGNALS US-259: AT SHERRY LANE, SH-259A (SOUTH), SH-259A (NORTH), AND STEVENS GAP ROAD, 1.0 MILE, 6.3 MILES, 8.3 MILES, AND 9.7 MILES NORTH OF THE SH-3 JUNCTION NEAR BROKEN BOW. PROJECT LENGTH = 1.148 MILES			
<b>Contract Amount:</b>	\$3,131,815.45	<b>Funds Available:</b>	\$3,131,815.45	<b>Funds Paid(%) :</b> 41%
<b>Change Order</b>	1	<b>Original Time Used:</b>	28%	<b>Revised Time Used:</b> 28%

Request approval of Change Order No. 1 for an additional appropriation in the amount of \$91,000.00.

Site Requirement: This change provides payment for the early completion incentive earned by the contractor for achieving substantial completion on that portion of the project required to pave, stripe, and install the temporary portable traffic signals prior to the time allowed in the contract.

**NEW ITEM**

**\$91,000.00**

Milestone Incentive Compensation 1.00 LS \$91,000.00 /LS \$91,000.00

<b>CHANGE ORDER ACTIONS</b>						
CHANGE ORDER NO.	(+ Overrun (-) Underrun Amount (\$)	%	Appropriated Amount (\$)	%	Supplemental Agreement Amount(\$)	%
1	\$91,000.00	2.91%	\$91,000.00	2.91%	\$0.00	0.00%
<b>TOTAL</b>	<b>\$91,000.00</b>	<b>2.91%</b>	<b>\$91,000.00</b>	<b>2.91%</b>	<b>\$0.00</b>	<b>0.00%</b>

## Change Orders with Cumulative Total Greater than \$75,000

**August 01, 2022 Commission Meeting**

<b>Project Number:</b>	STP-246C(030)CI				<b>AGENDA ITEM</b>
		<b>Contract ID:</b>	170374	<b>112R</b>	
<b>Contractor :</b>	APAC-CENTRAL, INC.		<b>Job Piece No.:</b>		
			<b>Highway No.:</b>	COUNTY ROAD	
<b>Designer:</b>	KONERU CONSULTING SERVICES, PLLC.		<b>Div. / County.:</b>	01 / MCINTOSH	
<b>Description:</b>	GRADE, DRAIN, SURFACE, AND BRIDGE COUNTY ROAD (EW-115): FROM 4.8 MILES WEST OF THE MUSKOGEE COUNTY LINE, EXTEND EAST. PROJECT LENGTH = 0.408 MILE				
<b>Contract Amount:</b>	\$1,108,167.04	<b>Funds Available:</b>	\$1,176,843.60	<b>Funds Paid(%) :</b>	92%
<b>Change Order</b>	6	<b>Original Time Used:</b>	296%	<b>Revised Time Used:</b>	163%

Request approval of Change Order No. 6 for an additional appropriation in the amount of \$94,809.47.

Site Requirement: This change provides payment for the overrun of the solid slab sodding pay item required to provide permanent erosion control on all disturbed areas throughout the project in lieu of seeding as planned due to needing coverage in the fall and winter months. This change documents the underrun of the stabilized subgrade pay item due to an apparent overestimation of the contract amount.

<b>OVERRUN ITEM</b>	<b>\$109,210.50</b>
Solid Slab Sodding	20,802.00 SY      \$5.25 /SY      \$109,210.50
<b>UNDERRUN ITEM</b>	<b>-\$14,401.04</b>
Stabilized Subgrade	-3,200.23 SY      \$4.50 /SY      -\$14,401.04

CHANGE ORDER ACTIONS						
CHANGE ORDER NO.	(+ Overrun (-) Underrun Amount (\$)	%	Appropriated Amount (\$)	%	Supplemental Agreement Amount(\$)	%
1	\$27,372.02	2.47%	\$27,372.02	2.47%	\$27,225.00	2.46%
2	\$2,640.00	0.24%	\$2,640.00	0.24%	\$2,640.00	0.24%
3	\$247.50	0.02%	\$247.50	0.02%	\$247.50	0.02%
4	\$38,417.04	3.47%	\$38,417.04	3.47%	\$0.00	0.00%
6	\$94,809.47	8.56%	\$94,809.47	8.56%	\$0.00	0.00%
<b>TOTAL</b>	<b>\$163,486.03</b>	<b>14.75%</b>	<b>\$163,486.03</b>	<b>14.75%</b>	<b>\$30,112.50</b>	<b>2.72%</b>

## Change Orders with Cumulative Total Greater than \$75,000

**August 01, 2022 Commission Meeting**

<b>Project Number:</b>	STP-253F(047)CI			<b>AGENDA ITEM</b>
		<b>Contract ID:</b>	200021	<b>112S</b>
<b>Contractor :</b>	PARADIGM CONSTRUCTION & ENGINEERING, INC	<b>Job Piece No.:</b>	30491(04)	
		<b>Highway No.:</b>	COUNTY ROADS	
<b>Designer:</b>	GUY ENGINEERING	<b>Div. / County.:</b>	08 / NOWATA	
<b>Description:</b>	BRIDGE AND APPROACHES COUNTY ROADS (DELAWARE AVENUE AND CEDAR STREET): DELAWARE AVENUE, OVER WESTERN BRANCH 0.1 MILES WEST OF THE US-169 JUNCTION IN NOWATA. CEDAR STREET, OVER WESTERN BRANCH 0.1 MILES NORTH OF THE US-60 JUNCTION. PROJECT LENGTH = 0.305 MILES			
<b>Contract Amount:</b>	\$1,958,715.00	<b>Funds Available:</b>	\$1,958,715.00	<b>Funds Paid(%) :</b> 83%
<b>Change Order</b>	1	<b>Original Time Used:</b>	64%	<b>Revised Time Used:</b> 64%

Request approval of Change Order No. 1 for an additional appropriation in the amount of \$95,444.48.

Engineering: This change provides payment for the overrun of the Class A concrete, CLSM backfill, and precast arch culvert pay items due to errors made when calculating the contract amount; and for the overrun of the rock excavation pay item required to complete Bridges A and B as specified in lieu of the substructure excavation pay item due to encountering rock at a higher elevation than indicated in the plans.

<b>OVERRUN ITEMS</b>				<b>\$97,762.28</b>
Rock Excavation (Br. A)	20.98 CY	\$137.00 /CY		\$2,874.26
Class A Concrete (Waterline)	11.51 CY	\$550.00 /CY		\$6,330.50
Class A Concrete (Sanitary Sewer)	5.07 CY	\$525.00 /CY		\$2,661.75
CLSM Backfill (Br. A)	129.00 CY	\$142.00 /CY		\$18,318.00
Precast Arch Culvert (Br. A)	0.34 LF	\$6,150.00 /LF		\$2,091.00
Rock Excavation (Br. B)	94.91 CY	\$97.00 /CY		\$9,206.27
CLSM Backfill (Br. B)	79.00 CY	\$142.00 /CY		\$11,218.00
Precast Arch Culvert (Br. B)	8.75 LF	\$5,150.00 /LF		\$45,062.50
<b>UNDERRUN ITEMS</b>				<b>-\$2,317.80</b>
Substructure Excavation Common (Br. A)	-20.98 CY	\$20.00 /CY		-\$419.60
Substructure Excavation Common (Br. B)	-94.91 CY	\$20.00 /CY		-\$1,898.20

<b>CHANGE ORDER ACTIONS</b>						
CHANGE ORDER NO.	(+) Overrun (-) Underrun Amount (\$)	%	Appropriated Amount (\$)	%	Supplemental Agreement Amount(\$)	%
1	\$95,444.48	4.87%	\$95,444.48	4.87%	\$0.00	0.00%
2	-\$1,000.00	-0.05%	\$0.00	0.00%	\$0.00	0.00%
3	\$20,812.53	1.06%	\$20,812.53	1.06%	\$13,552.53	0.69%
<b>TOTAL</b>	<b>\$115,257.01</b>	<b>5.88%</b>	<b>\$116,257.01</b>	<b>5.94%</b>	<b>\$13,552.53</b>	<b>0.69%</b>

## Change Orders with Cumulative Total Greater than \$75,000

**August 01, 2022 Commission Meeting**

<b>Project Number:</b>	STP-253F(047)CI	<b>Contract ID:</b>	200021	<b>AGENDA ITEM</b>
<b>Contractor :</b>	PARADIGM CONSTRUCTION & ENGINEERING, INC	<b>Job Piece No.:</b>	30491(04)	<b>112T</b>
		<b>Highway No.:</b>	COUNTY ROADS	
<b>Designer:</b>	GUY ENGINEERING	<b>Div. / County.:</b>	08 / NOWATA	
<b>Description:</b>	BRIDGE AND APPROACHES COUNTY ROADS (DELAWARE AVENUE AND CEDAR STREET): DELAWARE AVENUE, OVER WESTERN BRANCH 0.1 MILES WEST OF THE US-169 JUNCTION IN NOWATA. CEDAR STREET, OVER WESTERN BRANCH 0.1 MILES NORTH OF THE US-60 JUNCTION. PROJECT LENGTH = 0.305 MILES			
<b>Contract Amount:</b>	\$1,958,715.00	<b>Funds Available:</b>	\$1,958,715.00	<b>Funds Paid(%) :</b> 89%
<b>Change Order</b>	3	<b>Original Time Used:</b>	76%	<b>Revised Time Used:</b> 76%

Request approval of Change Order No. 3 for a supplemental agreement and an additional appropriation in the amount of \$20,812.53.

Engineering: This change provides payment for the additional work required to install an encased 18-inch corrugated steel drainage pipe between Station 11+10 and 12+35 Right due to the plans incorrectly stating the existing structure was to be removed and plugged.

<b>NEW ITEMS</b>	<b>\$13,552.53</b>
18" Corr. Galv. Steel Pipe (Reclassified)	132.00 LF      \$45.60 /LF      \$6,019.20
Headwall	1.00 EA      \$7,533.33 /EA      \$7,533.33
<b>OVERRUN ITEM</b>	<b>\$7,260.00</b>
18" Corr. Galv. Steel Pipe	132.00 LF      \$55.00 /LF      \$7,260.00

CHANGE ORDER ACTIONS						
CHANGE ORDER NO.	(+) Overrun (-) Underrun Amount (\$)	%	Appropriated Amount (\$)	%	Supplemental Agreement Amount(\$)	%
1	\$95,444.48	4.87%	\$95,444.48	4.87%	\$0.00	0.00%
2	-\$1,000.00	-0.05%	\$0.00	0.00%	\$0.00	0.00%
3	\$20,812.53	1.06%	\$20,812.53	1.06%	\$13,552.53	0.69%
<b>TOTAL</b>	<b>\$115,257.01</b>	<b>5.88%</b>	<b>\$116,257.01</b>	<b>5.94%</b>	<b>\$13,552.53</b>	<b>0.69%</b>



## Change Orders with Cumulative Total Greater than \$75,000

**August 01, 2022 Commission Meeting**

<b>Project Number:</b>	NHPPI-4000-(100)PM				<b>AGENDA ITEM</b>
			<b>Contract ID:</b>	200163	<b>112U</b>
<b>Contractor :</b>	HASKELL LEMON CONSTRUCTION CO.		<b>Job Piece No.:</b>	21007(09)	
			<b>Highway No.:</b>	I-40	
<b>Designer:</b>	OKLA. DEPT. OF TRANSPORTATION		<b>Div. / County.:</b>	03 / OKFUSKEE	
<b>Description:</b>	PAVEMENT REHABILITATION (ASPHALT) I-40: FROM 0.4 MILES WEST OF SH-27, EXTEND EAST NEAR OKEMAH. PROJECT LENGTH = 5.792 MILES				
<b>Contract Amount:</b>	\$17,697,697.00	<b>Funds Available:</b>	\$18,327,552.94	<b>Funds Paid(%) :</b>	96%
<b>Change Order</b>	5	<b>Original Time Used:</b>	123%	<b>Revised Time Used:</b>	92%

Request approval of Change Order No. 5 for an additional appropriation in the amount of \$630,725.25.

Site Requirement: This change provides payment for the additional expense incurred by the contractor due to the increase of the asphalt binder and fuel price indexes as provided for in the contract.

**NEW ITEMS**

**\$630,725.25**

Asphalt Binder Price Adjustment	1.00 LS	\$68,505.61 /LS	\$68,505.61
Asphalt Binder Price Adjustment	1.00 LS	\$216,077.55 /LS	\$216,077.55
Asphalt Binder Price Adjustment	1.00 LS	\$46,854.57 /LS	\$46,854.57
Asphalt Binder Price Adjustment	1.00 LS	\$164,357.56 /LS	\$164,357.56
Asphalt Binder Price Adjustment	1.00 LS	\$112,135.14 /LS	\$112,135.14
Fuel Price Adjustment	1.00 LS	\$22,718.08 /LS	\$22,718.08
Fuel Price Adjustment	1.00 LS	\$76.74 /LS	\$76.74

**CHANGE ORDER ACTIONS**

CHANGE ORDER NO.	(+ Overrun (-) Underrun Amount (\$)	%	Appropriated Amount (\$)	%	Supplemental Agreement Amount(\$)	%
1	\$0.00	0.00%	\$0.00	0.00%	\$0.00	0.00%
2	\$176,814.53	1.00%	\$176,814.53	1.00%	\$176,814.53	1.00%
3	\$453,041.41	2.56%	\$453,041.41	2.56%	\$131,763.01	0.74%
4	\$0.00	0.00%	\$0.00	0.00%	\$0.00	0.00%
5	\$630,725.25	3.56%	\$630,725.25	3.56%	\$0.00	0.00%
<b>TOTAL</b>	<b>\$1,260,581.19</b>	<b>7.12%</b>	<b>\$1,260,581.19</b>	<b>7.12%</b>	<b>\$308,577.54</b>	<b>1.74%</b>

## Change Orders with Cumulative Total Greater than \$75,000

**August 01, 2022 Commission Meeting**

<b>Project Number:</b>	ACNHPI-0040-5(382) / ACNHPI-4000-(047)				<b>AGENDA ITEM</b>
			<b>Contract ID:</b>	170289	<b>112V</b>
<b>Contractor :</b>	DUIT CONSTRUCTION COMPANY, INC.		<b>Job Piece No.:</b>	20324(04)	
			<b>Highway No.:</b>	I-40	
<b>Designer:</b>	EST		<b>Div. / County.:</b>	04 / OKLAHOMA	
<b>Description:</b>	GRADE, DRAIN, SURFACE, AND BRIDGE I-40: FROM THE I-240 INTERSECTION, EXTEND SOUTHEAST IN OKLAHOMA CITY. PROJECT LENGTH = 5.182 MILES				
<b>Contract Amount:</b>	\$71,328,987.96	<b>Funds Available:</b>	\$72,530,331.79	<b>Funds Paid(%) :</b>	98%
<b>Change Order</b>	9	<b>Original Time Used:</b>	106%	<b>Revised Time Used:</b>	100%

Request approval of Change Order No. 9 for a supplemental agreement and an additional appropriation in the amount of \$37,434.71.

Site Requirement: This change provides payment for the additional work required to construct pier protection at the Choctaw Road and Triple X Road bridges due to safety concerns; for the additional work required to adjust a newly constructed ditch due to heavy rainfall causing water to backup onto adjacent private properties; and for the overrun of the unclassified excavation pay item required to complete the project in lieu of rock excavation as planned due to no rock being encountered during construction.

<b>NEW ITEMS</b>				<b>\$75,195.46</b>
Sand Filled Impact Atten. Module (Triple X Rd.)	38.00 EA	\$446.82 /EA		\$16,979.16
Construction Miscellaneous (Pier Protection - Choctaw Rd.)	96.00 LF	\$236.09 /LF		\$22,664.64
Construction Miscellaneous (Pier Protection - Triple X Rd.)	96.00 LF	\$236.09 /LF		\$22,664.64
Construction Miscellaneous (Drainage Ditch Repair)	1.00 LS	\$12,887.02 /LS		\$12,887.02

<b>OVERRUN ITEM</b>				<b>\$710,961.70</b>
Unclassified Excavation	137,516.77 CY	\$5.17 /CY		\$710,961.70

<b>UNDERRUN ITEM</b>				<b>-\$748,722.45</b>
Rock Excavation	-116,081.00 CY	\$6.45 /CY		-\$748,722.45

CHANGE ORDER ACTIONS						
CHANGE ORDER NO.	(+ Overrun (-) Underrun Amount (\$)	%	Appropriated Amount (\$)	%	Supplemental Agreement Amount(\$)	%
1	\$112,798.34	0.16%	\$112,798.34	0.16%	\$112,798.34	0.16%
2	\$117,500.00	0.16%	\$117,500.00	0.16%	\$0.00	0.00%
3	-\$11,093.87	-0.02%	\$0.00	0.00%	\$0.00	0.00%
4	-\$357,923.59	-0.50%	\$0.00	0.00%	\$0.00	0.00%
5	\$0.00	0.00%	\$0.00	0.00%	\$0.00	0.00%
6	\$1,704.00	0.00%	\$1,704.00	0.00%	\$1,704.00	0.00%
7	\$0.00	0.00%	\$0.00	0.00%	\$0.00	0.00%
8	\$930,167.50	1.30%	\$930,167.50	1.30%	\$930,167.50	1.30%
9	\$37,434.71	0.05%	\$37,434.71	0.05%	\$37,434.71	0.05%
12	\$39,173.99	0.05%	\$39,173.99	0.05%	\$39,173.99	0.05%
<b>TOTAL</b>	<b>\$869,761.08</b>	<b>1.22%</b>	<b>\$1,238,778.54</b>	<b>1.74%</b>	<b>\$1,121,278.54</b>	<b>1.57%</b>

## Change Orders with Cumulative Total Greater than \$75,000

**August 01, 2022 Commission Meeting**

<b>Project Number:</b>	NHPPI-4400-(037)PM / NHPPI-4400-(039)PM / NHPPI-4400-(040)PM / NHPPI-4400-(041)PM / NHPPI-4400-(042)PM / NHPPI-4400-(043)PM		<b>Contract ID:</b>	190120	<b>AGENDA ITEM</b>
					112W
<b>Contractor :</b>	SHERWOOD CONSTRUCTION CO., INC.		<b>Job Piece No.:</b>	31006(04)	
			<b>Highway No.:</b>	I-44	
<b>Designer:</b>	OKLA. DEPT. OF TRANSPORTATION		<b>Div. / County.:</b>	04 / OKLAHOMA	
<b>Description:</b>	PAVEMENT REHABILITATION (P.C.) AND BRIDGE REHABILITATION I-44: FROM 0.3 MILES SOUTH OF THE I-240 INTERCHANGE, EXTEND NORTH IN OKLAHOMA CITY. PROJECT LENGTH = 5.785 MILES				
<b>Contract Amount:</b>	\$27,487,533.01	<b>Funds Available:</b>	\$27,881,281.97	<b>Funds Paid(%) :</b>	100%
<b>Change Order</b>	16	<b>Original Time Used:</b>	135%	<b>Revised Time Used:</b>	100%

Request approval of Change Order No. 16 for a supplemental agreement and an additional appropriation in the amount of \$252,052.45.

Site Requirement: This change provides payment for the final estimate due to the overrun of the traffic surveillance and smart work zone portable changeable message signs pay items. Additional quantities of these items were required to ensure the safety of the traveling public and the contractor personnel during construction of this project.

The cost of this change is partially offset by the underrun of others items of work.

### OVERRUN ITEMS

**\$292,006.35**

Traffic Surveillance, OHP (Non-Biddable)	3,608.00 HOUR	\$69.00 /HOUR	\$248,952.00
Smart Work Zone System - Portable Changeable Message Sign	2,955.00 SD	\$14.57 /SD	\$43,054.35

CHANGE ORDER ACTIONS						
CHANGE ORDER NO.	(+ Overrun (-) Underrun Amount (\$)	%	Appropriated Amount (\$)	%	Supplemental Agreement Amount(\$)	%
1	\$38,896.41	0.14%	\$38,896.41	0.14%	\$38,896.41	0.14%
2	\$0.00	0.00%	\$0.00	0.00%	\$0.00	0.00%
3	\$50,000.00	0.18%	\$50,000.00	0.18%	\$0.00	0.00%
4	-\$3,257.52	-0.01%	\$0.00	0.00%	\$0.00	0.00%
5	\$100,000.00	0.36%	\$100,000.00	0.36%	\$0.00	0.00%
6	-\$9,056.91	-0.03%	\$0.00	0.00%	\$0.00	0.00%
7	\$0.00	0.00%	\$0.00	0.00%	\$0.00	0.00%
8	\$30,000.00	0.11%	\$30,000.00	0.11%	\$0.00	0.00%
9	\$19,974.34	0.07%	\$19,974.34	0.07%	\$19,974.34	0.07%
10	\$100,000.00	0.36%	\$100,000.00	0.36%	\$0.00	0.00%
11	\$54,878.20	0.20%	\$54,878.20	0.20%	\$54,878.20	0.20%
12	\$0.01	0.00%	\$0.01	0.00%	\$0.01	0.00%
13	\$0.00	0.00%	\$0.00	0.00%	\$0.00	0.00%
14	\$0.00	0.00%	\$0.00	0.00%	\$0.00	0.00%
15	-\$298,476.57	-1.09%	\$0.00	0.00%	\$0.00	0.00%
16	\$252,052.45	0.92%	\$252,052.45	0.92%	\$192,978.42	0.70%
17	-\$5,617.66	-0.02%	\$0.00	0.00%	\$0.00	0.00%
<b>TOTAL</b>	<b>\$329,392.75</b>	<b>1.20%</b>	<b>\$645,801.41</b>	<b>2.35%</b>	<b>\$306,727.38</b>	<b>1.12%</b>

## Change Orders with Cumulative Total Greater than \$75,000

**August 01, 2022 Commission Meeting**

<b>Project Number:</b>	NHPP-257N(085)PM		<b>Contract ID:</b>	210283	<b>AGENDA ITEM</b>
<b>Contractor :</b>	SHERWOOD CONSTRUCTION CO., INC.		<b>Job Piece No.:</b>	24233(04)	<b>112X</b>
			<b>Highway No.:</b>	US-60	
<b>Designer:</b>	OKLA. DEPT. OF TRANSPORTATION		<b>Div. / County.:</b>	08 / OSAGE	
<b>Description:</b>	GRADE, DRAIN, AND SURFACE US-60: FROM THE SH-35 JUNCTION, EXTEND EAST NEAR OSAGE HILLS STATE PARK. PROJECT LENGTH = 4.838 MILES				
<b>Contract Amount:</b>	\$29,932,220.16	<b>Funds Available:</b>	\$29,932,220.16	<b>Funds Paid(%) :</b>	15%
<b>Change Order</b>	1	<b>Original Time Used:</b>	13%	<b>Revised Time Used:</b>	13%

Request approval of Change Order No. 1 for a supplemental agreement and an additional appropriation in the amount of \$298,336.00.

Site Requirement: This change provides payment for the additional work required to construct a temporary retaining wall between Station 1534+00 and 1536+00 Left to stop a landslide from further undermining the existing highway and propagating through the new alignment due to heavy rainfall occurring during the Spring of 2022. This change extends the contract time ten days to complete this additional work.

<b>NEW ITEM</b>	<b>\$298,336.00</b>
Construction Miscellaneous (Soldier Pile Wall, Slide Repair)	200.00 LF      \$1,491.68 /LF      \$298,336.00

CHANGE ORDER ACTIONS						
CHANGE ORDER NO.	(+ Overrun (-) Underrun Amount (\$)	%	Appropriated Amount (\$)	%	Supplemental Agreement Amount(\$)	%
1	\$298,336.00	1.00%	\$298,336.00	1.00%	\$298,336.00	1.00%
<b>TOTAL</b>	<b>\$298,336.00</b>	<b>1.00%</b>	<b>\$298,336.00</b>	<b>1.00%</b>	<b>\$298,336.00</b>	<b>1.00%</b>

## Change Orders with Cumulative Total Greater than \$75,000

**August 01, 2022 Commission Meeting**

<b>Project Number:</b>	STP-260B(056)PM				<b>AGENDA ITEM</b>
			<b>Contract ID:</b>	210085	<b>112Y</b>
<b>Contractor :</b>	DUIT CONSTRUCTION COMPANY, INC.		<b>Job Piece No.:</b>	29860(04)	
			<b>Highway No.:</b>	US-177	
<b>Designer:</b>	OLSSON		<b>Div. / County.:</b>	04 / PAYNE	
<b>Description:</b>	GRADE, DRAIN, AND SURFACE US-177: FROM 0.2 MILES NORTH OF THE SH-51 JUNCTION, EXTEND NORTH IN STILLWATER. PROJECT LENGTH = 2.785 MILES				
<b>Contract Amount:</b>	\$17,627,610.31	<b>Funds Available:</b>	\$17,627,610.31	<b>Funds Paid(%) :</b>	20%
<b>Change Order</b>	1	<b>Original Time Used:</b>	19%	<b>Revised Time Used:</b>	19%

Request approval of Change Order No. 1 for a supplemental agreement and an additional appropriation in the amount of \$148,915.40.

Engineering: This change provides payment for reclassification of the unit price for the traffic signal controller assembly pay item required to upgrade the controller cabinet's functionality to accommodate current operations; for the temporary traffic signal pay item required to provide a signal during construction at the McElroy Rd. and Lakeview Rd. intersections due to the existing signals being in conflict with the proposed storm sewer; and for the junction box and pavement marking removal pay items required to complete the project as specified due to this work being inadvertently omitted from the plans.

<b>NEW ITEMS</b>			<b>\$520,915.40</b>
Temp. Traff. Signal Span Wire Equip	1.00 LS	\$96,015.00 /LS	\$96,015.00
Traffic Signal Controller Assembly (Reclassified)	6.00 EA	\$68,360.30 /EA	\$410,161.80
Special Junction Box	1.00 EA	\$12,988.60 /EA	\$12,988.60
Pavement Mrkng. Removal (Traf. Strp.)	3,500.00 LF	\$0.50 /LF	\$1,750.00
<b>UNDERRUN ITEM</b>			<b>-\$372,000.00</b>
Traffic Signal Controller Assembly	-6.00 EA	\$62,000.00 /EA	-\$372,000.00

<b>CHANGE ORDER ACTIONS</b>						
CHANGE ORDER NO.	(+ Overrun (-) Underrun Amount (\$)	%	Appropriated Amount (\$)	%	Supplemental Agreement Amount(\$)	%
1	\$148,915.40	0.84%	\$148,915.40	0.84%	\$148,915.40	0.84%
<b>TOTAL</b>	<b>\$148,915.40</b>	<b>0.84%</b>	<b>\$148,915.40</b>	<b>0.84%</b>	<b>\$148,915.40</b>	<b>0.84%</b>

## Change Orders with Cumulative Total Greater than \$75,000

**August 01, 2022 Commission Meeting**

<b>Project Number:</b>	STP-261B(103)PM	<b>Contract ID:</b>	210061	<b>AGENDA ITEM</b>
<b>Contractor :</b>	BRIDGECO CONTRACTORS, INC.	<b>Job Piece No.:</b>	29246(04)	<b>112Z</b>
		<b>Highway No.:</b>	US-270	
<b>Designer:</b>	GARVER ENGINEERING	<b>Div. / County.:</b>	02 / PITTSBURG	
<b>Description:</b>	BRIDGE REHABILITATION US-270: OVER BLUE CREEK, 0.7 MILES WEST OF THE SH-63 JUNCTION NEAR HAILEYVILLE. PROJECT LENGTH = 0.251 MILE			
<b>Contract Amount:</b>	\$3,076,175.85	<b>Funds Available:</b>	\$3,363,817.53	<b>Funds Paid(%) :</b> 99%
<b>Change Order</b>	4	<b>Original Time Used:</b>	80%	<b>Revised Time Used:</b> 80%

Request approval of Change Order No. 4 for an additional appropriation in the amount of \$86,244.61.

Site Requirement: This change provides payment for the overrun of the concrete for pavement pay item required to reconstruct the existing shoulder due to becoming more deteriorated than expected while traffic was placed on it during construction.

**OVERRUN ITEM**

**\$86,244.61**

P. C. Concrete for Pavement 433.39 CY \$199.00 /CY \$86,244.61

CHANGE ORDER ACTIONS						
CHANGE ORDER NO.	(+) Overrun (-) Underrun Amount (\$)	%	Appropriated Amount (\$)	%	Supplemental Agreement Amount(\$)	%
1	\$46,828.19	1.52%	\$46,828.19	1.52%	\$46,828.19	1.52%
2	-\$5.07	0.00%	\$0.00	0.00%	\$0.00	0.00%
3	\$240,813.49	7.83%	\$240,813.49	7.83%	\$240,813.49	7.83%
4	\$86,244.61	2.80%	\$86,244.61	2.80%	\$0.00	0.00%
5	\$168,128.41	5.47%	\$168,128.41	5.47%	\$0.00	0.00%
<b>TOTAL</b>	<b>\$542,009.63</b>	<b>17.62%</b>	<b>\$542,014.70</b>	<b>17.62%</b>	<b>\$287,641.68</b>	<b>9.35%</b>

## Change Orders with Cumulative Total Greater than \$75,000

### August 01, 2022 Commission Meeting

<b>Project Number:</b>	STP-261B(103)PM	<b>Contract ID:</b>	210061	<b>AGENDA ITEM</b>
<b>Contractor :</b>	BRIDGECO CONTRACTORS, INC.	<b>Job Piece No.:</b>	29246(04)	<b>112AA</b>
		<b>Highway No.:</b>	US-270	
<b>Designer:</b>	GARVER ENGINEERING	<b>Div. / County.:</b>	02 / PITTSBURG	
<b>Description:</b>	BRIDGE REHABILITATION US-270: OVER BLUE CREEK, 0.7 MILES WEST OF THE SH-63 JUNCTION NEAR HAILEYVILLE. PROJECT LENGTH = 0.251 MILE			
<b>Contract Amount:</b>	\$3,076,175.85	<b>Funds Available:</b>	\$3,363,817.53	<b>Funds Paid(%) :</b> 99%
<b>Change Order</b>	5	<b>Original Time Used:</b>	80%	<b>Revised Time Used:</b> 80%

Request approval of Change Order No. 5 for an additional appropriation in the amount of \$168,128.41.

Site Requirement: This change provides payment for the early completion incentive earned by the contractor for achieving substantial completion on this project prior to the Time B Bid allowed in the contract; and for the bridge smoothness incentive earned by the contractor for exceptionally smooth bridge deck and approach slabs as defined in the contract. This change extends the milestone time thirteen days due to weather related delays experienced by the contractor during construction in accordance with the Governor's Emergency Declaration EO 2022-02, and due to delays caused by an obstruction discovered during construction of the drilled shafts on Pier No. 1 as outlined on Change Order No. 1.

**NEW ITEMS**

**\$168,128.41**

Incentive for Early Completion	33.00 DAY	\$5,000.00 /DAY	\$165,000.00
Pavement / Bridge Smoothness Adjustment	1.00 LS	\$3,128.41 /LS	\$3,128.41

CHANGE ORDER ACTIONS						
CHANGE ORDER NO.	(+ Overrun (-) Underrun Amount (\$)	%	Appropriated Amount (\$)	%	Supplemental Agreement Amount(\$)	%
1	\$46,828.19	1.52%	\$46,828.19	1.52%	\$46,828.19	1.52%
2	-\$5.07	0.00%	\$0.00	0.00%	\$0.00	0.00%
3	\$240,813.49	7.83%	\$240,813.49	7.83%	\$240,813.49	7.83%
4	\$86,244.61	2.80%	\$86,244.61	2.80%	\$0.00	0.00%
5	\$168,128.41	5.47%	\$168,128.41	5.47%	\$0.00	0.00%
<b>TOTAL</b>	<b>\$542,009.63</b>	<b>17.62%</b>	<b>\$542,014.70</b>	<b>17.62%</b>	<b>\$287,641.68</b>	<b>9.35%</b>

## Change Orders with Cumulative Total Greater than \$75,000

**August 01, 2022 Commission Meeting**

<b>Project Number:</b>	STP-163C(328)PM			<b>AGENDA ITEM</b>
		<b>Contract ID:</b>	200292	<b>112BB</b>
<b>Contractor :</b>	SILVER STAR CONSTRUCTION COMPANY, INC.	<b>Job Piece No.:</b>	21788(07)	
		<b>Highway No.:</b>	SH-102	
<b>Designer:</b>	OKLA. DEPT. OF TRANSPORTATION	<b>Div. / County.:</b>	03 / POTTAWATOMIE	
<b>Description:</b>	WIDEN AND RESURFACE SH-102: FROM THE SH-9 JUNCTION, EXTEND NORTH NEAR TECUMSEH. PROJECT LENGTH = 3.096 MILES			
<b>Contract Amount:</b>	\$10,665,800.00	<b>Funds Available:</b>	\$10,737,624.72	<b>Funds Paid(%) :</b> 62%
<b>Change Order</b>	4	<b>Original Time Used:</b>	87%	<b>Revised Time Used:</b> 76%

Request approval of Change Order No. 4 for a supplemental agreement and an additional appropriation in the amount of \$48,864.03.

Site Requirement: This change provides payment for the additional work required to repair the recently completed slopes due to exceptionally heavy rainfall occurring before permanent erosion control could be installed. This change extends the contract time fifteen days to complete this additional work.

**NEW ITEM**

**\$48,864.03**

Construction Miscellaneous (Erosion Repair)

1.00 EA

\$48,864.03 /EA

\$48,864.03

CHANGE ORDER ACTIONS						
CHANGE ORDER NO.	(+ Overrun (-) Underrun Amount (\$)	%	Appropriated Amount (\$)	%	Supplemental Agreement Amount(\$)	%
1	\$3,596.00	0.03%	\$3,596.00	0.03%	\$3,596.00	0.03%
2	\$62,783.72	0.59%	\$62,783.72	0.59%	\$2,482.52	0.02%
3	\$5,445.00	0.05%	\$5,445.00	0.05%	\$5,445.00	0.05%
4	\$48,864.03	0.46%	\$48,864.03	0.46%	\$48,864.03	0.46%
<b>TOTAL</b>	<b>\$120,688.75</b>	<b>1.13%</b>	<b>\$120,688.75</b>	<b>1.13%</b>	<b>\$60,387.55</b>	<b>0.57%</b>



## Change Orders with Cumulative Total Greater than \$75,000

**August 01, 2022 Commission Meeting**

<b>Project Number:</b>	NHPPI-4000-(076)PM / NHPPI-4000-(075)PM / SBR-4000(080)SB	<b>Contract ID:</b>	190186	<b>AGENDA ITEM</b>
<b>Contractor :</b>	DUIT CONSTRUCTION COMPANY, INC.	<b>Job Piece No.:</b>	28988(04)	<b>112CC</b>
<b>Designer:</b>	OKLA. DEPT. OF TRANSPORTATION	<b>Highway No.:</b>	I-40	
<b>Description:</b>	PAVEMENT AND BRIDGE REHABILITATION, AND BRIDGE AND APPROACHES I-40: FROM 1.0 MILE EAST OF SH-10, EXTEND EAST NEAR VIAN. PROJECT LENGTH = 6.497 MILES			
<b>Contract Amount:</b>	\$36,536,881.25	<b>Funds Available:</b>	\$36,637,166.06	<b>Funds Paid(%) :</b> 93%
<b>Change Order</b>	3	<b>Original Time Used:</b>	203%	<b>Revised Time Used:</b> 152%

Request approval of Change Order No. 3 for a supplemental agreement and an additional appropriation in the amount of \$93,561.90.

Site Requirement: This change provides payment for the bridge deck repair pay items required to maintain the existing westbound bridges while both directions of traffic were placed on it during reconstruction of the eastbound bridges due to the existing bridge decks becoming more deteriorated than expected.

<b>NEW ITEMS</b>	<b>\$93,561.90</b>
Class B Bridge Deck Repair (Bridge A)	58.00 SY      \$455.54 /SY      \$26,421.32
Class B Bridge Deck Repair (Bridge C)	75.00 SY      \$455.54 /SY      \$34,165.50
Class B Bridge Deck Repair (Bridge A1)	47.00 SY      \$455.54 /SY      \$21,410.38
Class C Bridge Deck Repair (Bridge A)	5.00 SY      \$770.98 /SY      \$3,854.90
Class C Bridge Deck Repair (Bridge C)	5.00 SY      \$770.98 /SY      \$3,854.90
Class C Bridge Deck Repair (Bridge A1)	5.00 SY      \$770.98 /SY      \$3,854.90

CHANGE ORDER ACTIONS						
CHANGE ORDER NO.	(+ Overrun (-) Underrun Amount (\$)	%	Appropriated Amount (\$)	%	Supplemental Agreement Amount(\$)	%
1	\$34,500.00	0.09%	\$34,500.00	0.09%	\$34,500.00	0.09%
2	\$17,116.02	0.05%	\$17,116.02	0.05%	\$17,116.02	0.05%
3	\$93,561.90	0.26%	\$93,561.90	0.26%	\$93,561.90	0.26%
4	\$11,828.85	0.03%	\$11,828.85	0.03%	\$11,828.85	0.03%
5	\$28,065.00	0.08%	\$28,065.00	0.08%	\$28,065.00	0.08%
6	\$8,774.94	0.02%	\$8,774.94	0.02%	\$8,774.94	0.02%
7	-\$418,454.44	-1.15%	\$0.00	0.00%	\$0.00	0.00%
<b>TOTAL</b>	<b>-\$224,607.73</b>	<b>-0.61%</b>	<b>\$193,846.71</b>	<b>0.53%</b>	<b>\$193,846.71</b>	<b>0.53%</b>

## Change Orders with Cumulative Total Greater than \$75,000

**August 01, 2022 Commission Meeting**

<b>Project Number:</b>	STP-272N(360)IG				<b>AGENDA ITEM</b>
		<b>Contract ID:</b>	220109	<b>112DD</b>	
<b>Contractor :</b>	TRAFFIC & LIGHTING SYSTEMS, LLC		<b>Job Piece No.:</b>		
			<b>Highway No.:</b>	CITY STREET	
<b>Designer:</b>	KIMLEY HORN		<b>Div. / County.:</b>	08 / TULSA	
<b>Description:</b>	TRAFFIC SIGNALS CITY STREETS (S. MEMORIAL DRIVE/S. MINGO ROAD): AT MULTIPLE LOCATIONS IN THE CITY OF BIXBY. PROJECT LENGTH = 0.000 MILES				
<b>Contract Amount:</b>	\$1,440,239.00	<b>Funds Available:</b>	\$1,440,239.00	<b>Funds Paid(%) :</b>	0%
<b>Change Order</b>	1	<b>Original Time Used:</b>	0%	<b>Revised Time Used:</b>	0%

Request approval of Change Order No. 1 for a supplemental agreement and an additional appropriation in the amount of \$100,633.00.

Engineering: This change provides payment for reclassification of the unit price for the traffic signal controller cabinet pay item required to install larger cabinets than originally planned to facilitate backup batteries as standard for the City of Bixby due to this work being inadvertently omitted from the plans; and for the wireless signal communication system pay item required to include the intersection at 131st Street and Mingo Road with interconnectivity to adjacent signals.

**NEW ITEMS**

**\$404,633.00**

Wireless Signal Communication System	1.00 EA	\$2,393.00 /EA	\$2,393.00
Cabinet (Reclassified)	8.00 EA	\$50,280.00 /EA	\$402,240.00

**UNDERRUN ITEM**

**-\$304,000.00**

Cabinet	-8.00 EA	\$38,000.00 /EA	-\$304,000.00
---------	----------	-----------------	---------------

### CHANGE ORDER ACTIONS

CHANGE ORDER NO.	(+ Overrun (-) Underrun Amount (\$)	%	Appropriated Amount (\$)	%	Supplemental Agreement Amount(\$)	%
1	\$100,633.00	6.99%	\$100,633.00	6.99%	\$100,633.00	6.99%
<b>TOTAL</b>	<b>\$100,633.00</b>	<b>6.99%</b>	<b>\$100,633.00</b>	<b>6.99%</b>	<b>\$100,633.00</b>	<b>6.99%</b>

**STATEMENT OF OVERRUNS AND UNDERRUNS  
ON PROJECTS APPROVED BY THE CONSTRUCTION DIVISION  
FOR FINAL PAYMENT THE MONTH OF JUNE, 2022**

Project	County Name	Contract Amount	Amount Paid	Overrun	Underrun	Percent Overrun	Explanation of Overrun or 10% or more Underrun
ACSTP-156C(136)SS	OKMULGEE	\$16,214,688.52	\$16,929,417.43	\$714,728.91	\$0.00	4.41%	Paid negotiated settlement, pavement smoothness bonus, overrun paving and traffic control
CIRB-207D(099)(100)RB	BRYAN	\$3,964,776.31	\$4,080,836.86	\$116,060.55	\$0.00	2.93%	Overrun paving
ERSTP-251B(101)ER	MUSKOGEE	\$716,564.84	\$721,554.60	\$4,989.76	\$0.00	0.70%	Overrun traffic control
NHPP-CRRS(012)PM	HARPER	\$4,508,838.00	\$4,353,754.24	\$0.00	(\$155,083.76)	0.00%	
NHPPI-4400(058)PM	TULSA	\$10,884,214.61	\$11,117,948.58	\$233,733.97	\$0.00	2.15%	Paid incentive for early completion
SAP-202C(046)ES	ALFALFA	\$565,886.00	\$553,255.18	\$0.00	(\$12,630.82)	0.00%	
SBR-225N(059)SB	GARVIN	\$3,089,697.62	\$3,669,855.30	\$580,157.68	\$0.00	18.78%	Paid incentive for early completion
SBR-4400(074)SB	OKLAHOMA	\$610,103.77	\$562,901.12	\$0.00	(\$47,202.65)	0.00%	
STP-114E(300)EH	CLEVELAND	\$913,794.02	\$853,821.62	\$0.00	(\$59,972.40)	0.00%	
STP-136B(145)SS	KAY	\$9,346,021.75	\$9,148,468.21	\$0.00	(\$197,553.54)	0.00%	
STP-172B(400)IG	TULSA	\$6,145,684.67	\$7,378,052.52	\$1,232,367.85	\$0.00	20.05%	Overrun right of way line relocation, paving, traffic control and mission pay items
STP-208C(084)RW	CADDO	\$72,711.00	\$75,611.00	\$2,900.00	\$0.00	3.99%	Added water well
STP-210B(078)3P	CARTER	\$1,163,992.13	\$1,131,178.68	\$0.00	(\$32,813.45)	0.00%	
STP-214B(068)(069)AG	CLEVELAND	\$9,437,000.00	\$10,008,510.31	\$571,510.31	\$0.00	6.06%	Overrun paving, steel, and traffic control
STP-214N(113)AG	CLEVELAND	\$290,289.90	\$292,447.55	\$2,157.65	\$0.00	0.74%	Overrun sidewalk
STP-228B(017)PM	GREER	\$7,797,408.00	\$7,521,998.57	\$0.00	(\$275,409.43)	0.00%	
STP-241D(063)CI	LINCOLN	\$840,777.04	\$824,122.61	\$0.00	(\$16,654.43)	0.00%	
STP-CRRS(003)PM	CADDO	\$1,371,086.65	\$1,372,791.33	\$1,704.68	\$0.00	0.12%	HMA deductions
<b>Grand Total</b>		<b>\$77,933,534.83</b>	<b>\$80,594,331.96</b>	<b>\$3,460,311.36</b>	<b>(\$797,320.48)</b>		

**FOR PRESENTATION AT THE COMMISSION MEETING OF AUGUST 1, 2022**

**AGENDA ITEM NO. 113**

**SUBJECT: PROPOSED BID OPENINGS**

**COUNTY: STATEWIDE**

**This item consists of the final September 2022 bid opening for \$227,566,243, the tentative October 2022 bid opening for \$155,433,838, and the tentative November 2022 bid opening for \$90,793,293.**

**The Department recommends Commission approval of the final September 2022, tentative October 2022 and tentative November 2022 bid openings.**

PROJECTS AWARDED			PROJECTS AWARDED		
LETTING MONTH		TOTAL	LETTING MONTH		TOTAL
JULY	2020	\$ 78,150,113	JULY	2021	\$ 97,392,613
AUGUST	2020	\$ 152,409,740	AUGUST	2021	\$ 43,622,988
SEPTEMBER	2020	\$ 146,416,153	SEPTEMBER	2021	\$ 52,452,432
OCTOBER	2020	\$ 57,463,903	OCTOBER	2021	\$ 100,904,729
NOVEMBER	2020	\$ 96,382,071	NOVEMBER	2021	\$ 115,159,093
DECEMBER	2020	\$ -	DECEMBER	2021	\$ -
JANUARY	2021	\$ 119,300,929	JANUARY	2022	\$ 105,912,002
FEBRUARY	2021	\$ 71,838,974	FEBRUARY	2022	\$ 101,892,375
MARCH	2021	\$ 115,701,751	MARCH	2022	\$ 138,078,068
APRIL	2021	\$ 50,580,966	APRIL	2022	\$ 75,343,267
MAY	2021	\$ 121,810,134	MAY	2022	\$ 70,083,891
JUNE	2021	\$ 69,249,343	JUNE	2022	\$ 115,014,901
TOTAL		\$ 1,079,304,077	TOTAL		\$ 1,015,856,358

JobPiece	CD	Highway	MILES	Adv Con	Federal	State	Other	Total
31127(04)	6	COBRGE	0.110	0.00	250,000.00	0.00	895,183.27 (A)	1,145,183.27
ALFALFA		BRIDGE & APPROACHES BRIDGE & APPROACHES ON EW-26 OVER WEST CLAY CREEK, 2.0 MILES SOUTH & 1.2 MILES WEST OF JCT US-64/SH-8 CN 2110 STP -202D (063) CI						
33510(04)	5	COBRGE	0.070	0.00	350,000.00	0.00	652,268.42 (A)	1,002,268.42
BECKHAM		BRIDGE & APPROACHES CO BR OVER ELK CR ON EW-113, 6 MI N & 4.5 MI E JCT SH-34/SH-152 NEAR ELK CITY (E113 & N199.5) STP -205B (101) CI						
36197(04)	5	SH058	0.200	0.00	0.00	345,000.00	0.00	345,000.00
BLAINE		GRADE, DRAIN & SURFACE SH-58, REPLACE A ROADWAY SIZE STRUCTURE LOCATED 2.4 MILES SOUTH OF SH-51 JCT IN CANTON. MC -206C (073) PM						
23145(14)	2		0.000	0.00	0.00	739,928.23	0.00	739,928.23
BRYAN		BRIDGE PAINTING DISTRICT 2: MAINTENANCE - US-70 SB: OVER LITTLE RIVER & SH-91: OVER SAND CR SSP -NBIP (538) PM						
32105(04)	F 1	US062	1.430	0.00	2,968,695.90	742,173.97	0.00	3,710,869.87
CHEROKEE		INTERSECT MODIF US-62: FR 0.2 MI S OF US-62/SH-82 JCT, N APPROX 1.4 MI NHPP -211N (062) PM						
32893(04)	2	CO RD	0.040	0.00	405,101.00	0.00	745,391.69 (A)	1,150,492.69
CHOCTAW		BRIDGE & APPROACHES BRIDGE OVER ROCK CREEK ON EW 209 FROM 0.93 MILES W. OF NS4300, 2 MIS S. AND 2.0 MIS W. OF SAWYER. LN 49. NBI 22199 STP -212D (065) CI						
13337(06)	6	US287	3.980	0.00	3,724,650.49	14,898,601.96	0.00	18,623,252.45
CIMARRON		GRADE, DRAIN, BRIDGE & SURFACE US-287: BEGIN APPROX 9.3 MILES NORTH OF VAN BUREN ST IN BOISE CITY, EXTEND NORTH APPROX 3.98 MILES NHPP -017N (282) PM						
36013(04)	7		0.000	0.00	708,525.20	177,131.30	0.00	885,656.50
COMANCHE		JOINT SEAL/REPAIR DISTRICT 7 BRIDGE PREVENTATIVE MAINTENANCE PROJECTS (JOINT/REPAIR) NBI: 26732, 19985 STP -216F (107) 3B						
29377(04)	7	COBRGE	0.270	0.00	281,601.00	0.00	1,024,760.89 (A)	1,306,361.89
COTTON		BRIDGE & APPROACHES BRIDGE AND APPROACHES (EW-190) OVER DEEP RED CREEK, 1.0 MILE SOUTH AND 2.4 MILES WEST OF JCT US-277/SH-5A (LOW WATER KING) STP -217D (052) CI						
21841(04)	3	SH019	4.600	0.00	12,292,125.09	3,073,031.27	0.00	15,365,156.36
GARVIN		WIDEN, RESURFACE & BRIDGE SH-19: FROM 1.0 MI EAST OF US-177 IN STRATFORD, EAST 4.6 MI STP -125B (115) PM						
24719(04)	3	COBRGE	0.200	0.00	522,069.46	0.00	130,517.36 (B)	652,586.82
GARVIN		BRIDGE & APPROACHES CO. BR. OVER UNNAMED CR., ON EW-1590, 9.0 MI. E. AND 2.0 MI. S. OF PAULS VALLEY LOCAL NO. 107 STP -125D (154) CO						
35403(04)	4		0.000	0.00	380,650.75	95,162.69	0.00	475,813.44
KAY		JOINT SEAL/REPAIR DISTRICT 4 BRIDGE PREVENTATIVE MAINTENANCE PROJECTS (JOINT SEAL/REPAIR) NBI:18737, 18738, 19027 STP -236F (103) 3B						
36006(04)	5		0.000	0.00	651,645.60	162,911.40	0.00	814,557.00
KIOWA		JOINT SEAL/REPAIR DISTRICT 5 BRIDGE PREVENTIVE MAINTENANCE PROGRAM (3B), 2022 (JOINT SEAL/REP STP -238F (084) 3B						
34117(04)	8	ENHAN	1.500	0.00	445,380.00	0.00	513,915.72 (C)	959,295.72
MAYES		PEDESTRIAN / BIKE IMPROVEMENTS TOWN OF CHOUTEAU: SIDEWALKS FROM HALEY'S VILLAGE ACROSS SH-69 TO CHOUTEAU SCHOOL CAMPUSES TAP -249E (057) TP						

JobPiece	CD	Highway	MILES	Adv Con	Federal	State	Other	Total
35353(04)	8	SH412B	0.500	0.00	0.00	4,000,000.00	0.00	4,000,000.00
MAYES		INTERSECT MODIF SH-412B: AT PATROL RD						
	SSP	-249C (066)	PM					
33888(04)	7	IS035	0.020	0.00	0.00	1,605,443.99	0.00	1,605,443.99
MURRAY		BRIDGE REHABILITATION I-35 NB/SB: OVER US-77, 1.6 MI. N. OF CARTER C/L						
	SBR	-3500 (123)	SB					
34377(04)	1	US062	0.200	0.00	0.00	4,310,897.63	0.00	4,310,897.63
MUSKOGEE		BRIDGE REHABILITATION US-62 OVER SH-165, 1.7 MI EAST OF JCT SH-16						
	SBR	-251N (142)	SB					
35155(04)	4		0.000	0.00	680,721.14	170,180.29	0.00	850,901.43
NOBLE		BRIDGE WATER PROOF SEAL DISTRICT 4: DISTRICT WIDE SILANE						
	STP	-252F (087)	PM					
12972(08)	3	US075	2.790	0.00	6,441,750.99	1,610,437.75	0.00	8,052,188.74
OKFUSKEE		WIDEN, RESURFACE & BRIDGE US-75: FROM EW CO. RD. 1120, NORTH APPROX. 3.0 MI TO JUST NORTH OF I-40						
	STP	-254B (055)	PM					
33581(04)	3	COBRGE	0.270	0.00	875,235.00	0.00	219,002.72	1,094,237.72
OKFUSKEE		BRIDGE & APPROACHES CO BR OVER WALNUT CR ON EW 1020, 2 MI S AND 2.6 MI W OF MASON. LOCAL NO 37. NBI 02085					(A)	
	STP	-254D (058)	CI					
28992(04)	4	IS040	0.100	0.00	19,611,596.28	19,611,596.28	25,000,000.00	64,223,192.56
OKLAHOMA		INTERCHANGE I-40: AT DOUGLAS BLVD IN MWC, APPX 6 MILES EAST OF I-35					(D)	
	NHPP	-4000- (126)	PM					
31011(05)	4	IS040	5.000	0.00	21,450,129.79	21,450,129.79	17,000,000.00	59,900,259.58
OKLAHOMA		GRADE, DRAIN & SURFACE I-40: FROM DOUGLAS BLVD IN MWC, EXTEND EAST 5.0 MILES TO THE 240 JCT.					(D)	
	NHPP	-4000- (156)	PM					
33281(04)	4	ENHAN	0.000	0.00	534,000.00	0.00	137,428.36	671,428.36
OKLAHOMA		PEDESTRIAN / BIKE IMPROVEMENTS WARR ACRES: PEDESTRIAN IMPROVEMENTS					(C)	
	TAP	-255D (578)	AG					
34581(04)	4	COBRGE	0.030	0.00	430,000.00	0.00	561,521.09	991,521.09
OKLAHOMA		BRIDGE & APPROACHES BRIDGE & APPROACHES ON NE 108TH OVER UNNAMED CREEK, .6 MI EAST OF WESTMINSTER D1					(B)	
	STP	-255D (570)	CO					
28007(07)	2	SH003	0.630	0.00	6,179,788.42	1,544,947.11	0.00	7,724,735.53
PUSHMATAHA		BRIDGE & APPROACHES SH-3: OVER KIAMICHI RIVER, 8 MILES EAST OF ANTLERS						
	NHPP	-264N (090)	PM					
32381(04)	3	COBRGE	0.170	0.00	750,194.00	0.00	187,547.47	937,741.47
SEMINOLE		BRIDGE & APPROACHES CO BR ON EW-116 OVER TURKEY CREEK, APPROX 1.0 MI SOUTH 1.4 MI WEST OF LITTLE (LOCAL 33)					(A)	
	STP	-267D (096)	CI					
29780(04)	1	SH101	0.340	0.00	2,987,152.80	746,788.20	0.00	3,733,941.00
SEQUOYAH		BRIDGE & APPROACHES SH-101: OVER BIG SKIN BAYOU, 7.52 MILES EAST OF US-59 JCT.						
	STP	-268C (084)	PM					
35708(04)	6		0.000	0.00	197,123.37	49,280.84	0.00	246,404.21
TEXAS		JOINT SEAL/REPAIR DISTRICT 6 BRIDGE PREVENTATIVE MAINTENANCE PROJECTS (JOINT SEAL/REPAIR) NBI: 21359, 24413, 24948						
	STP	-270F (047)	3B					

JobPiece	CD	Highway	MILES	Adv Con	Federal	State	Other	Total
30318(11)	8		0.000	0.00	0.00	3,113,310.10	0.00	3,113,310.10
TULSA		BRIDGE PAINTING DISTRICT 8 BRIDGE PAINT (VARIOUS LOCATIONS)						
	SSP	-NBIP (542)	PM					
31943(09)	8		0.000	0.00	0.00	416,017.33	0.00	416,017.33
TULSA		BRIDGE WATER PROOF SEAL DISTRICT 8 SILANE PROJECTS						
	SSP	-272F (354)	PM					
31944(09)	8	VAC	0.000	0.00	0.00	1,930,499.27	0.00	1,930,499.27
TULSA		JOINT SEAL/REPAIR JOINT SEAL / REPAIR						
	SSP	-272F (352)	PM					
32896(04)	8	SH097	2.070	0.00	1,674,004.79	0.00	0.00	1,674,004.79
TULSA		A.D.A. PROJECTS FOR COMPLIANCE SH-97: FROM THE JCT WITH US-64, EXTEND NORTH 1.02 MI						
	STP	-272B (368)	AD					
33343(04)	8	US064	0.070	0.00	5,393,645.73	5,393,645.72	0.00	10,787,291.45
TULSA		INTERCHANGE US-64: AT JCT. OF US-64 (MEMORIAL DR.) & US-169 INTERCHANGE						
	NHPP	-272N (356)	PM					
31086(04)	8	US060	0.190	0.00	3,300,643.16	825,160.79	0.00	4,125,803.95
WASHINGTON		BRIDGE REHABILITATION US 60: OVER US 75 IN BARTLESVILLE						
	NHPP	-018N (083)	PM					
34 PROJECTS		GRAND-TOTALS		0.00	93,486,429.96	87,012,275.91	47,067,536.99	227,566,242.86

OTHER FUNDING CATEGORIES:

- (A) CO. IMPROVE. ROAD & BRIDGE
- (B) COUNTY FUNDS
- (C) LOCAL /CITY MATCHING FUNDS
- (D) OTHER PLACE HOLDER

PREPARED BY PROGRAMS DIVISION

JobPiece	CD	Highway	MILES	Adv Con	Federal	State	Other	Total
34105(04)	6	ENHAN	1.650	0.00	554,636.00	0.00	149,277.00 (A)	703,913.00
ALFALFA		PEDESTRIAN / BIKE IMPROVEMENTS CITY OF CHEROKEE: SIDEWALK AND TRAIL ALONG ABANDONED RAIL CORRIDOR						
	TAP	-202D	(070)	TP				
35169(04)	6	US064	0.580	0.00	326,000.00	0.00	0.00	326,000.00
ALFALFA		A.D.A. PROJECTS FOR COMPLIANCE US-64: FROM W 12TH TO CO RD E0190 (CHEROKEE OK)						
	STP	-202C	(067)	AD				
35465(04)	5	IS040	0.700	0.00	500,000.00	0.00	0.00	500,000.00
BECKHAM		ILLUMINATION I-40: HIGHWAY ILLUMINATION PROJECT IN DISTRICT 5 AT EXIT 40						
	HSIPG	-4000	(168)	TR				
20997(10)	3	US077	3.250	0.00	7,500,000.00	7,500,000.00	0.00	15,000,000.00
CLEVELAND		GRADE, DRAIN, BRIDGE & SURFACE US-77: FROM 7.4 MI NORTH OF SH-39, NORTH 3.25 MI TO MCGUIRE ROAD IN NOBLE						
	STP	-114C	(207)	PM				
35323(04)	3	CT ST	0.900	0.00	4,825,733.00	0.00	1,664,597.00 (A)	6,490,330.00
CLEVELAND		GRADE, DRAIN & SURFACE EXTENSION OF JAMES GARNER AVENUE, FROM ACRES STREET TO FLOOD AVENUE, WITH ROUND-A-BOUNT AT THE INTERSECTION OF JAMES GARNER AVENUE AND FLOOD AVENUE						
	STP	-214D	(125)	AG				
35325(04)	3	MISC	0.000	0.00	2,792,114.00	0.00	698,029.00 (A)	3,490,143.00
CLEVELAND		ITS MAINTENANCE & OPERATIONS TRAFFIC MANAGEMENT CENTER: VIDEO WALL, WORK STATIONS, COMPUTER SERVER, HARDWARE & SOFTWARE, NETWORKING, COMMUNICATION EQUIPMENT, FURNITURE, CLOSED						
	STP	-214E	(128)	AG				
33826(04)	8	SH097	3.210	0.00	2,777,320.00	723,760.00	0.00	3,501,080.00
CREEK		SAFETY IMPROVEMENT SH-97: FROM 91ST STREET TO 51ST STREET (SAFETY IMPROVEMENTS)						
	NHPP	-219N	(094)	PM				
30390(04)	3	IS035	6.190	0.00	10,000,000.00	10,000,000.00	0.00	20,000,000.00
GARVIN		GRADE, DRAIN & SURFACE I-35: FROM 4.21 MI NORTH OF SH-7, NORTH 6.19 MI TO SH-29 (NORTHBOUND ONLY)						
	NHPPI	-3500-	(134)	PM				
24379(04)	5	US283	4.250	0.00	4,933,738.20	1,233,435.08	0.00	6,167,173.28
JACKSON		WIDEN, RESURFACE & BRIDGE US-283: BEGIN APPROX 0.5 MILE NORTH OF THE RED RIVER BRIDGE & EXTEND NORTH 4.25 MILE.						
	STP	-133B	(084)	PM				
34114(04)	7	ENHAN	0.360	0.00	183,795.00	0.00	36,454.00 (A)	220,249.00
JEFFERSON		PEDESTRIAN / BIKE IMPROVEMENTS CITY OF WAURIKA: SIDEWALKS ON E. D AVE. FROM MAIN ST. TO PINE ST.						
	TAP	-234C	(055)	TP				
30017(04)	3	COBRGE	0.200	0.00	230,000.00	0.00	500,000.00 (C)	730,000.00
JOHNSTON		BRIDGE & APPROACHES BR AND APPR ON BLUE RIVER ROAD OVER BUZZARD CREEK 6 MILES NORTH AND 1.1 EAST OF TISHOMINGO						
	STP	-235C	(069)	CI				
32995(04)	3	ENHAN	0.000	0.00	998,742.00	0.00	1,039,507.00 (A)	2,038,249.00
MCCLAIN		PEDESTRIAN / BIKE IMPROVEMENTS PURCELL: DOWNTOWN STREETScape						
	TAP	-244D	(083)	TP				
35154(04)	4		0.000	0.00	1,600,000.00	400,000.00	0.00	2,000,000.00
NOBLE		SIGNING DISTRICT 4: DISTRICT WIDE SIGNAGE						
	STP	-252F	(088)	PM				
28816(04)	4	ENHAN	0.000	0.00	502,008.00	0.00	334,672.00 (A)	836,680.00
OKLAHOMA		ENHANCEMENT OKLAHOMA CITY EXPANDING CONNECTIVITY DOWNTOWN						
	STP	-155E	(918)	EH				



JobPiece	CD	Highway	MILES	Adv Con	Federal	State	Other	Total
33269(04)	4	ENHAN	0.000	0.00	904,000.00	0.00	288,282.00 (A)	1,192,282.00
OKLAHOMA		PEDESTRIAN / BIKE IMPROVEMENTS MIDWEST CITY: RAIL WITH TRAIL PHASE 2 AND 3						
		TAP	-255D (510)	AG				
34161(04)	4	CT ST	0.000	0.00	2,088,407.00	0.00	522,102.00 (A)	2,610,509.00
OKLAHOMA		PEDESTRIAN / BIKE IMPROVEMENTS OKC: S. WALKER AVE, SW 44TH ST & SOUTH ROBINSON ST. PEDESTRIAN IMPROVEMENTS TIP ID 10875 - STBG-UZA - CAPPED						
		STP	-255C (583)	AG				
34162(04)	4	CT ST	0.000	0.00	1,354,998.00	0.00	338,750.00 (A)	1,693,748.00
OKLAHOMA		PEDESTRIAN / BIKE IMPROVEMENTS OKC: N. PORTLAND AVE & NW 50TH STREET PEDESTRIAN IMPROVEMENTS TIP ID 10878 - STBG-UZA - CAPPED						
		STP	-255C (584)	AG				
34164(04)	4	CT ST	0.000	0.00	1,122,846.00	0.00	280,712.00 (A)	1,403,558.00
OKLAHOMA		PEDESTRIAN / BIKE IMPROVEMENTS OKC: S. PENN AVE AND SW 59TH STREET - PEDESTRIAN IMPROVEMENTS TIP ID 10879 - STBG-UZA - CAPPED						
		STP	-255C (585)	AG				
34165(04)	4	CT ST	0.000	0.00	1,597,397.00	0.00	399,349.00 (A)	1,996,746.00
OKLAHOMA		PEDESTRIAN / BIKE IMPROVEMENTS OKC: S. BLACKWELDER AVE & S. WESTERN AVE: SW 36TH AVE TO SW 59TH AVE - PED TIP ID 10876 - STBG-UZA -CAPPED						
		STP	-255C (586)	AG				
34168(04)	4	CT ST	0.000	0.00	433,952.00	0.00	108,488.00 (A)	542,440.00
OKLAHOMA		PEDESTRIAN / BIKE IMPROVEMENTS OKC: N CLASSEN BLVD: NW 50TH TO CLASSEN CURVE TIP ID 10825 - STBG-UZA CAPPED						
		STP	-255C (587)	AG				
34169(04)	4	CT ST	0.000	0.00	1,569,853.00	0.00	392,463.00 (A)	1,962,316.00
OKLAHOMA		PEDESTRIAN / BIKE IMPROVEMENTS OKC: S WESTERN AVE & S. ROBINSON AVE - SIDEWALKS TIP ID 10877 - STBG-UZA CAPPED						
		STP	-255F (588)	AG				
34171(04)	4	CT ST	0.000	0.00	1,049,837.00	0.00	262,459.00 (A)	1,312,296.00
OKLAHOMA		PEDESTRIAN / BIKE IMPROVEMENTS OKC: N. PENN AVE: NW 36TH ST TO PARK PLACE - PEDESTRIAN IMPROVEMENTS TIP 10838 - STBG-UZA - CAPPED						
		STP	-255C (589)	AG				
24268(04)	8	SH020	5.000	0.00	1,719,078.12	6,876,312.47	0.00	8,595,390.59
OSAGE		WIDEN & RESURFACE SH-20: FROM SH-99 IN HOMINY, EAST 5.0 MI						
		STP	-157C (122)	PM				
35365(04)	2	CO RD	3.550	0.00	2,500,000.00	0.00	1,800,000.00 (A) (B)	4,300,000.00
PITTSBURG		RECONSTRUCT - NO ADDED LANES HAYWOOD ROAD FROM US-271 EXTENDING SOUTH 3.7 MILES TO MCALESTER ARMY AMMUNITION PLANT (P'SHIP WITH ARMY AMMUNITION PLANT & PITTSBURG CO)						
		STP	-261C (117)	UR				
23284(13)	3		0.000	0.00	0.00	264,031.57	0.00	264,031.57
POTTAWATOMIE		BRIDGE PAINTING DIVISION 3: BRIDGE PAINT PROJECTS						
		SSP	-NBIP (539)	PM				
26242(04)	8	SH020	1.400	0.00	17,717,033.82	4,429,258.46	0.00	22,146,292.28
ROGERS		GRADE,DRAIN,BRIDGE & SURFACE SH-20: FROM SOUTHAVEN RD, EXTEND EAST APPROX. 1.4 MILES TO KING RD.						
		NHPP	-166N (232)	PM				
26242(07)	8	SH020	2.800	0.00	16,732,084.27	4,183,021.07	0.00	20,915,105.34
ROGERS		GRADE,DRAIN,BRIDGE & SURFACE SH-20: FROM .65 MILES EAST OF THE VERDIGRIS RIVER, SE APPROX. 2.8 MILES TO SOUTHAVEN RD.						
		NHPP	-266N (101)	PM				
26505(04)	8	SH051	0.620	0.00	0.00	10,287,547.30	0.00	10,287,547.30
TULSA		GRADE, DRAIN & SURFACE SH-97: FROM 500' SOUTH OF MORROW DRIVE EXTEND NORTH TO 2ND STREET						
		SSP	-172B (461)	PM				

JobPiece	CD	Highway	MILES	Adv Con	Federal	State	Other	Total
31944(10)	8		0.000	0.00	0.00	500,000.00	0.00	500,000.00
TULSA		JOINT SEAL/REPAIR JOINT SEAL / REPAIR						
	SSP	-272F (355)	PM					
33955(04)	8	CT ST	0.000	0.00	3,750,000.00	0.00	5,186,723.00 (A)	8,936,723.00
TULSA		WIDEN, RESURFACE & BRIDGE BROKEN ARROW: WIDENING ALBANY ST (61ST ST S) FROM 9TH ST (177TH E AVE LYNN LN) TO 23RD ST (193RD E AVE COUNTY LINE RD) TO 5 W/ SIGNALS SIDEWALK TRAIL STP -272F (367) IG						
35214(04)	8		0.300	0.00	0.00	515,000.00	0.00	515,000.00
TULSA		GRADE, DRAIN, BRIDGE & SURFACE US-169: US-169 ACCESS ROAD APPROX. 3.7 MILES NORTH OF I-44 EXTEND NORTH 2 MILES. SSP -272D (353) PM						
35942(04)	8		0.000	0.00	204,828.40	51,207.10	0.00	256,035.50
TULSA		JOINT SEAL/REPAIR DISTRICT 8: BRIDGE PREVENTATIVE MAINTENANCE STP -272F (357) 3B						
35336(05)	9		0.000	0.00	1,600,000.00	400,000.00	0.00	2,000,000.00
STATEWIDE		ITS CONSTRUCTION ODOT DMS PROJECT 2022 DMS AT VARIOUS LOCATIONS STP -299S (330) IT						
35416(05)	9		0.000	0.00	1,600,000.00	400,000.00	0.00	2,000,000.00
STATEWIDE		ITS CONSTRUCTION ODOT CCTV PROJECT 2022 VARIOUS LOCATIONS STP -299S (332) IT						
34 PROJECTS			GRAND-TOTALS	0.00	93,668,400.81	47,763,573.05	14,001,864.00	155,433,837.86

OTHER FUNDING CATEGORIES:

- (A) LOCAL /CITY MATCHING FUNDS
- (B) COUNTY FUNDS
- (C) CO. IMPROVE. ROAD & BRIDGE

PREPARED BY PROGRAMS DIVISION

JobPiece	CD	Highway	MILES	Adv Con	Federal	State	Other	Total
26999(04)	5	SH034	2.300	0.00	7,517,295.35	7,517,295.35	0.00	15,034,590.70
BECKHAM		GRADE, DRAIN, BRIDGE & SURFACE SH-34: AT THE NORTH FORK OF THE RED RIVER & O'FLOW APPROX 2.4 & 3.6 MI NORTH OF GREER C/L STP -205C (061) PM						
34996(04)	2	US070	0.200	0.00	0.00	1,800,000.00	0.00	1,800,000.00
BRYAN		BRIDGE REHABILITATION US-70 OVER BIG CREEK, 14.65 E JCT SH-78 SBR -207N (111) SB						
30458(04)	7	CO RD	4.860	0.00	233,766.00	0.00	2,366,234.00 (A)	2,600,000.00
COMANCHE		GRADE, DRAIN & SURFACE GRADE, DRAIN AND SURFACE ON TRAIL ROAD (NS-265), FROM 0.7 MI S. OF SPENCER RD, 1.8 MI N. TO 0.1 MI N. OF EW 1590 D1 CIRB -216C (096) RB						
31068(04)	8	US069	0.200	0.00	0.00	1,100,000.00	0.00	1,100,000.00
CRAIG		BRIDGE REHABILITATION US-69 REHAB BRIDGES OVER I-44 NORTH AND SOUTHBOUND SBR -013N (198) SB						
31089(04)	8	SH048	5.350	0.00	4,360,000.00	1,090,000.00	0.00	5,450,000.00
CREEK		PAVEMENT REHABILITATION SH-48: BEGIN 5.56 MILES NORTH OF SH-66 EAST JCT AND EXTEND NORTH 5.35 MI STP -219B (102) PM						
28708(04)	5	CO RD	2.000	0.00	0.00	0.00	6,515,185.15 (A)	6,515,185.15
CUSTER		WIDEN & RESURFACE CO RD MAJOR COL.GRADE DRAIN SURFACE LAWTER RD.EW-101 FROM SH-54 E. 2.0 MI CIRB -220B (084) RB						
30469(04)	7	COBRGE	0.200	0.00	720,103.00	0.00	348,168.00 (A)	1,068,271.00
JEFFERSON		BRIDGE & APPROACHES BRIDGE AND APPROACHES (NS-276) OVER TRIBUTARY TO BEAVER CREEK, 2.3 MILES EAST AND 1.7 MILES SOUTH OF HASTINGS STP -234D (060) CI						
32954(04)	4	US177	1.500	0.00	1,336,847.66	0.00	0.00	1,336,847.66
KAY		A.D.A. PROJECTS FOR COMPLIANCE US-177: FROM CHRYSLER AVE. NORTH 1.5 MILES TO SH-11 STP -236C (070) AD						
31857(04)	4	COBRGE	0.060	0.00	700,000.00	0.00	1,300,000.00 (A)	2,000,000.00
KINGFISHER		BRIDGE & APPROACHES BRIDGE AND APPROACHES ON EW 79.5 OVER UNCLE JOHN CREEK, 0.2 MILES NORTH AND 0.7 MILES EAST OF JCT SH-33/US-81 CN 79 D1 STP -237D (095) CI						
33401(04)	2	SH001	0.200	0.00	0.00	204,135.00	0.00	204,135.00
LATIMER		BRIDGE PAINTING SH-1 OVER BOGGS HOLLOW CREEK AND OVERFLOW, 0.44 MI EAST OF SH-2 JCT SBR -239C (039) SB						
31790(04)	7	COBRGE	0.250	0.00	155,365.00	0.00	1,029,635.00 (A)	1,185,000.00
LOVE		BRIDGE & APPROACHES BRIDGE & APPROACHES (NS-3266) OVER TRIB. TO THE RED RIVER, 2.9 MILES WEST AND 2.0 MILES SOUTH OF JCT SH-32/I-35 (LOW WATER KING) STP -243D (043) CI						
34286(04)	3	SH048	0.400	0.00	0.00	2,400,000.00	0.00	2,400,000.00
OKFUSKEE		BRIDGE REHABILITATION SH-48 OVER NORTH CANADIAN, 1.8 MI SOUTH OF I-40 SBR -254C (061) SB						
34652(04)	4		0.000	0.00	2,000,000.00	0.00	0.00	2,000,000.00
OKLAHOMA		ITS CONSTRUCTION DYNAMIC MESSAGE SIGN INSTALLATION FOR I-40 EB AND WB AT MID POINTS & QUARTER POINTS (MULTIPLE LOCATIONS IN DISTRICTS 1, 3 & 5) NHPP -4000- (118) IT						
34987(04)	4	US077	5.700	0.00	5,500,000.00	5,500,000.00	0.00	11,000,000.00
OKLAHOMA		RESURFACE US-77: FROM APPROX 0.5 MI NORTH OF MEMORIAL RD INTERCHANGE (COMFORT DR) NORTH TO 2ND STREET IN EDMOND THEN 2ND ST FROM BRDWAY TO I-35 NHPP -024N (016) PM						

JobPiece	CD	Highway	MILES	Adv Con	Federal	State	Other	Total
25445(04)	4	CO RD	3.000	0.00	0.00	0.00	5,375,000.00 (A)	5,375,000.00
PAYNE		GRADE, DRAIN, BRIDGE & SURFACE NORFOLK RD(NS-353) BEG @ SH-33 & EXT NORTH 3.0 MILE TO FAIRLAWN RD(EW-68) (6046C) D1 CIRB -160C (184) RB						
27104(04)	4	SH051	0.200	0.00	2,968,000.00	742,000.00	0.00	3,710,000.00
PAYNE		BRIDGE & APPROACHES SH-51: OVER UNNAMED CREEK 5.6 MILES E. OF THE LOGAN C/L STP -260B (074) PM						
31815(04)	4	SH033	8.950	0.00	8,368,750.00	8,368,750.00	0.00	16,737,500.00
PAYNE		BRIDGE & APPROACHES SH-33: OVER CIMARRON RIVER AT PAYNE LOGAN CL STP -260B (057) PM						
34330(04)	5	SH030	0.100	0.00	0.00	1,600,000.00	0.00	1,600,000.00
ROGER MILLS		BRIDGE REHABILITATION SH-30 OVER WASHITA RIVER, 7.5 MI. N. JCT SH-47 SBR -265C (029) SB						
14971(42)	6	US054	3.600	0.00	6,400,000.00	1,600,000.00	0.00	8,000,000.00
TEXAS		SURFACE US-54: BEGIN APPROX 10.5 MI N OF JCT US-64 WEST, EXTEND NORTH 3.6 MILES (SURFACE FOR (35) NHPP -008N (108) FP						
33934(04)	6	SH003	0.150	0.00	0.00	520,000.00	0.00	520,000.00
TEXAS		BRIDGE REHABILITATION SH-3: OVER PALO DURO CREEK APPROX 3.6 MI W OF BEAVER CO SBR -017N (289) SB						
32980(04)	8	ENHAN	0.000	0.00	205,410.00	0.00	51,353.00 (B)	256,763.00
WASHINGTON		PEDESTRIAN / BIKE IMPROVEMENTS BARTLESVILLE; SIDEWALKS ALONG SHAWNEE AVENUE BEGINNING AT E 16TH ST. AND EXTEND NORTH 0.25 MI TO VALLEY RD. TAP -274D (038) TP						
34332(04)	5	SH115	0.010	0.00	0.00	900,000.00	0.00	900,000.00
WASHITA		BRIDGE REHABILITATION SH-115 OVER SPRING CREEK, 5.2 MI. N. OF KIOWA C/L SBR -275C (076) SB						
22 PROJECTS GRAND-TOTALS				0.00	40,465,537.01	33,342,180.35	16,985,575.15	90,793,292.51

OTHER FUNDING CATEGORIES:

- (A) CO. IMPROVE. ROAD & BRIDGE
- (B) LOCAL /CITY MATCHING FUNDS

PREPARED BY PROGRAMS DIVISION

JobPiece	CD	Highway	MILES	Adv Con	Federal	State	Other	Total
35309(04)	3	IS044	1.000	0.00	0.00	30,000,000.00	0.00	30,000,000.00
MONEY ONLY								
LINCOLN TURNER TURNPIKE: STROUD SERVICE PLAZA, MAINLINE WIDENING AND BRIDGE 43.4 REPLACEMENT.								
OTA PROJECT T-MC-128B								
35312(04)	9	OTA	0.000	0.00	0.00	4,700,000.00	0.00	4,700,000.00
MONEY ONLY								
STATEWIDE MUSKOGEE TURNPIKE: ALL ELECTRONIC TOLLING (AET) CONVERSION								
OTA PROJECT MU-MC-49								
2 PROJECTS			GRAND-TOTALS	0.00	0.00	34,700,000.00	0.00	34,700,000.00

OTHER FUNDING CATEGORIES:

PREPARED BY PROGRAMS DIVISION