

OKLAHOMA TRANSPORTATION COMMISSION

At Large – Chairman, Gene McKown, Norman (405) 364-1152

District 1 – Member Bob Coburn, Muskogee, (918) 869-7495

Adair, Cherokee, Haskell, McIntosh, Muskogee, Okmulgee, Sequoyah, Wagoner

District 2 – Member, James L. Grimsley, Calera, (405) 514-7365

Atoka, Bryan, Choctaw, Latimer, LeFlore, McCurtain, Marshall, Pittsburg, Pushmataha

District 3 – Secretary, T.W. Shannon, Oklahoma City, 405-946-2265

Coal, Cleveland, Garvin, Hughes, Johnston, Lincoln, McClain, Okfuskee, Pontotoc, Pottawatomie, Seminole

District 4 – Member Don Freymiller, Oklahoma City, (405) 792-8000

Canadian, Garfield, Grant, Kay, Kingfisher, Logan, Noble, Oklahoma, Payne

District 5 – Member, David Dyson, Elk City, (580) 225-0450

Beckham, Blaine, Custer, Dewey, Greer, Harmon, Jackson, Kiowa, Roger Mills, Tillman, Washita

District 6 – Member Bobby J. Alexander, Woodward, (580) 254-3232

Alfalfa, Beaver, Cimarron, Ellis, Harper, Major, Texas, Woods, Woodward

District 7 – Member, Stephen LaForge, Chickasha, (405) 222-3050

Caddo, Carter, Comanche, Cotton, Grady, Jefferson, Love, Murray, Stephens

District 8 – Vice-Chairman, Member Robert Peterson, Tulsa (918) 281-2673

Craig, Creek, Delaware, Mayes, Nowata, Osage, Ottawa, Pawnee, Rogers, Tulsa, Washington

Secretary of Transportation – Tim J. Gatz (405) 425-3602

Oklahoma Department of Transportation

Executive Director	Tim J. Gatz	522-1800
Deputy Director	Dawn Sullivan	521-4768
Chief Engineer	Brian Taylor	521-2701
Director of Finance & Administration	Chelley Hilmes	521-2591
Director of Operations	Shawn Davis	521-4675
Director of Engineering	Tim Tegeler	521-6916
Director of Capital Programs	Rick Johnson	522-6000
Interagency Liaison & PR Advisor	Terri Angier	521-6004
General Counsel	Sarah Penn	521-2630
Bridge Division	Steve Jacobi	521-2606
Civil Rights	Jenny Allen	521-2072
Construction Division Engineer	John Leonard	521-2561
Environmental Programs Division	Siv Sundaram	521-3050
Facilities Management Division	Ken Phillips	522-7605
Human Resources Division	Scott Lange	521-2194
Lake/Industrial Access Programs	Mitch Surret	522-0290
Legal Division	Lisa Endres	521-2681
Local Government Division	Shelly Williams	521-2553
Maintenance Division	Taylor Henderson	521-2557
Materials Division	Matt Romero	521-2677
Media & Public Relations	Brenda Perry (Acting)	521-6006
Office Engineer	Anthony Delce	521-2625
Office of Mobility & Public Transit Division	Ernie Mbroh	521-2584
Office Services	Jamie Bleeker	521-2587
Operations Review & Evaluation Division	Holly Lowe	521-4708
Procurement	Jennifer Hankins	522-6792
Project Management Division	Daniel Nguyen	522-3618
Rail Programs Division	Jared Schwennessen	521-4203
Right-of-Way Division	Robert Blackwell	521-2661
Roadway Design	Caleb Austin	521-2695
Strategic Asset & Performance Management	Matthew Swift	521-2671
Survey Division	Kyle King	521-2621
Traffic Engineering Division	Chad Pendley	521-2861

ODOT Field Districts

<u>Location and District Engineer</u>	<u>Phone</u>	<u>Fax</u>
Dist. 1, Muskogee, Chris Wallace	(918)687-5407	(918)687-9955
Dist. 2, Antlers, Anthony Echelle	(580)298-3371	(580)298-6152
Dist. 3, Ada, Ron Brown	(580)332-1526	(580)332-0261
Dist. 4, Perry, Trenton January	(580)336-7340	(580)336-7350
Dist. 5, Clinton, Brent Almquist	(580)323-1431	(580)323-1430
Dist. 6, Buffalo, Ron McDaniel	(580)735-2561	(580)735-2248
Dist. 7, Duncan, Jay Earp	(580)255-7586	(580)255-5064
Dist. 8, Tulsa, Randle White	(918)838-9933	(918)832-9074



AGENDA FOR THE TRANSPORTATION COMMISSION MEETING

DATE: January 11, 2021

TIME: 11:00 a.m.

PLACE: Commission Meeting Room, ODOT Central Office and Teleconference

The Oklahoma Transportation Commission's meeting on Monday, January 11th will be held with a quorum of Commissioners present at the Oklahoma Department of Transportation Central Office. The Commissioners attending virtually are: Bob Coburn, District I, David Dyson, District V, Bobby Alexander, District VI and Bob Peterson, District VIII. Commissioners joining the meeting by video teleconference will be given a phone number and access code specifically for them that allows them to listen and ask questions. Meeting presenters and guests may attend through a virtual meeting via video teleconference in compliance with the Oklahoma Open Meeting Act.

The in-person meeting space for Commissioners at ODOT Central Office will follow CDC guidelines and be socially distanced to maintain a safe environment in light of COVID-19. In accordance with Governor Kevin Stitt's executive orders, anyone entering a state agency building is required to wear a face mask. Only a very limited number of staff will physically be in the Commission Room to uphold social distancing requirements.

The Oklahoma Transportation Commission meeting teleconference will be available through two options. Transportation industry partners and the general public may choose one of the two options below to access the virtual meeting:

- **To watch:**
Public access meeting link: <http://www.ustream.tv/channel/odot-monthly-commission-meeting>
Make sure the volume on your PC (or other device) and the Ustream volume are turned up.
- **To listen only:**
Dial this phone number, toll free: 1-669-900-6833
When prompted, dial in the Meeting Number: 989 0292 8670

Special Note: The public access will be monitored by ODOT to ensure that if the audio connection is lost or interrupted, the meeting will be stopped and not resumed until an audio connection is restored.

In such a circumstance, if the audio connection is not restored within thirty (30) minutes, the meeting will be deemed adjourned at the time the audio connection was lost and the meeting shall be reconvened at 1:30 p.m. on the same date as identified for the originally scheduled meeting.

If an audio connection cannot be restored at the time scheduled to reconvene the meeting, then the meeting shall be reconvened on the next business day at 9:00 a.m. and thereafter on the next business day at 9:00 a.m. until an audio connection is restored.

This meeting will be electronically recorded and audio livestreamed from 200 N.E. 21st St., Oklahoma City, OK 73105 and the phone number is 405-521-8000.

Public Access to complete Commission Packet: www.odot.org/meetings

ITEMS TO BE PRESENTED BY COMMISSION CHAIRMAN

Call to Order

Roll Call – Commission Secretary

ITEM TO BE PRESENTED BY THE SECRETARY TO THE COMMISSION

1. **Approval of the Minutes of the Transportation Commission Meeting of December 7, 2020**

CONSENT DOCKET TO BE PRESENTED BY COMMISSION CHAIRMAN

2. **Programming of Federal Railroad Crossing Safety Funds - Section 130 Title 23 Funds - Mr. Schwennesen**

Kiowa County – District V

Near Snyder, Construction funding for a Signal project which includes the installation of pedestal-mounted flashing light signals with gate arms at the intersection of SH-54 with the Stillwater Central Railroad mainline. Total cost is \$262,921.00

3. **Modification of Federal Railroad Crossing Safety Funds - Section 130 Title 23 Funds - Mr. Schwennesen**

Canadian County – District IV - Yukon - SH-4/Mustang Road – JP33075(04) - Stillwater Central Railroad - \$5,568.67 - 18.63%

4. **Land Sales – Mr. Phillips**

a) Marshall County – District II – located approximately 0.5 mile south of the SH-99/US-70 intersection in Madill, OK - \$1,110.00

b) Creek County – District VIII – located at the NE corner of the intersection of 16th Street and US-75-A in Mounds, OK - \$1,800.00

END OF CONSENT DOCKET

ITEMS TO BE PRESENTED BY DIRECTOR OF ENGINEERING – Mr. Tegeler

5. **Programming Item**

Oklahoma County – District IV - a project to repair vehicle impact damage to NW 36th Street over I-44, located 3.3 miles north of I-40 - \$50,000 - Party responsible for the damage is known.

6. **Engineering Contracts**

a) Cherokee County – District I - to prepare construction plans for SH-82: beginning 1.4 miles north of US-62/SH-51 junction, north approximately 6.5 miles (Phase 1) and SH-82: beginning 1.4 miles north of US-62/SH-51 junction, north approximately 6.5 miles (Phase 2)

CI-2114

Garver, LLC

\$1,144,132.00

- b) Haskell County – District I - to prepare construction plans for SH-71: from 1.15 miles north of Pittsburg County Line, north 0.3 miles.
- | | | |
|----------|-----------------------|--------------|
| CI-2261A | CONSOR Engineers, LLC | \$460,335.00 |
|----------|-----------------------|--------------|
- c) McIntosh County - District I - to prepare construction plans for US-69: from McIntosh/Muskogee County Line, south 2.5 miles
- | | | |
|----------|-----------------------------------|--------------|
| CI-2266A | Crafton Tull and Associates, Inc. | \$228,083.00 |
|----------|-----------------------------------|--------------|
- d) Okmulgee County – District I - to prepare construction plans for US-75: from 3 miles south of US-62E, north 3 miles (northbound) & from 1 mile south of US-62E, north 1 mile (southbound)
- | | | |
|----------|------------------------|--------------|
| CI-2266C | Halff Associates, Inc. | \$326,700.00 |
|----------|------------------------|--------------|
- e) Sequoyah County – District I - to provide preliminary engineering and prepare construction plans for I-40: from 0.15 miles east of mile post 299 to 0.35 miles east of Dwight Mission Road
- | | | |
|----------|--------------------------------|--------------|
| CI-2266B | Guy Engineering Services, Inc. | \$649,325.00 |
|----------|--------------------------------|--------------|
- f) Wagoner County - District I - to prepare construction plans for SH-51: intersection modification at mile post 2.20 (91st street south)
- | | | |
|----------|----------------------------|--------------|
| CI-2220A | Meshek and Associates, LLC | \$292,457.00 |
|----------|----------------------------|--------------|
- g) Muskogee County – District I - to prepare construction plans for US-64/SH-16/US-64/SH-72 intersection (bridge over SH-72)
- | | | |
|----------|------------------------|--------------|
| CI-2264A | MKEC Engineering, Inc. | \$557,518.00 |
|----------|------------------------|--------------|
- h) Bryan County – District II - to prepare construction plans for US-69 northbound and southbound over West Arkansas Street, K.R.R. and Main Street, 3.77 & 3.88 miles north of junction US-69 Business
- | | | |
|----------|------------------------|----------------|
| CI-2261D | MKEC Engineering, Inc. | \$1,026,995.00 |
|----------|------------------------|----------------|
- i) Choctaw County – District II - to prepare construction plans for US-70: beginning at junction SH-209, extending east 5.76 miles to McCurtain County Line
- | | | |
|----------|--------------|----------------|
| CI-2264B | Olsson, Inc. | \$1,227,300.00 |
|----------|--------------|----------------|
- j) Cleveland County – District III - to prepare construction plans for SH-9: beginning at 156th street north in Norman, east approximately 4.0 miles to Pecan Creek Bridge (near Pottawatomie County Line)
- | | | |
|----------|-----------|----------------|
| CI-2264C | EST, Inc. | \$1,491,639.00 |
|----------|-----------|----------------|
- k) Garvin County – District III - to prepare construction plans for SH-145: over I-35
- | | | |
|----------|---------------------------------------|--------------|
| CI-2223E | MacArthur Associated Consultants, LLC | \$412,545.00 |
|----------|---------------------------------------|--------------|
- l) Pottawatomie County – District III - to prepare construction plans for SH-39 over Unnamed Creeks, 2.0 miles east of junction US-177
- | | | |
|----------|-----------|--------------|
| CI-2261B | EST, Inc. | \$772,900.00 |
|----------|-----------|--------------|

- m) Beckham County – District V - to prepare construction plans for SH-152: beginning on the east side of the SH-30 junction and extending east 4.1 miles

CI-2269A Cowan Group Engineering, LLC \$611,380.00

- n) Beaver County – District VI - to prepare construction plans for US-64 beginning at junction US-64/US-83, extending east 6.0 miles

CI-2268B MacArthur Associated Consultants, LLC \$650,740.00

- o) Comanche County – District VII - to prepare construction plans for US-62: from 82nd street in Lawton, east to I-44

CI-2267 Freese & Nichols, Inc. \$779,900.00

- p) Stephens County – District VII - to provide preliminary engineering and prepare construction plans for the Duncan Bypass: interchange construction at Elk Avenue

CI-2265 Olsson, Inc. \$378,945.00

- q) Craig County – District VIII - to prepare construction plans for Intersection at US-60 & SH-82

CI-2220B Atkins North America, Inc. \$213,560.00

7. Engineering Contract Supplements

- a) Seminole County – District III – this supplement is for additional engineering to develop final construction plans for SH-99: from 3.05 miles south of US-270, south 4.0 miles (new parallel lanes & resurface existing lanes) and SH-99: from 7.05 miles south of US-270, south 4.0 miles (new parallel lanes & resurface existing lanes)

CI-2070 Supplement 4 Benham Design, LLC \$140,040.50

- b) Oklahoma County - District IV - this supplement is for additional engineering to develop final construction plans for I-35: Frontage Road modifications from Memorial Road to SH-66

CI-2120 Supplement 1 Poe and Associates, Inc. \$1,597,156.00

- c) Custer County – District V - this supplement is for additional engineering to develop final construction plans for SH-54, beginning 1.8 miles north of the I-40 junction and extend north 5.0 miles.

EC-1376A Supplement 9 Atkins North America, Inc. \$33,900.00

ITEMS TO BE PRESENTED BY CONSTRUCTION DIVISION ENGINEER – Mr. Leonard

8. Change Orders with Cumulative Total of \$75,000.00 or Less – Information Only

- a) Carter County - Co. Rd. - STP-210D(070)CI / 30468(04), \$42,197.40, -4.62% Underrun
- b) Custer County - SH-33 - MC-220F(073)MD / 34771(04), \$1,375.00, 0.07%
- c) Harmon County - Co. Rd. - CIRB-229C(016)RB / 28710(04), \$51,565.88, 0.81%
- d) Hughes County - Co. Rd. - STP-232C(041)CI / 28575(04), \$8,273.20, 0.26%
- e) Jackson County - SH-5 - STP-233C(038)PM / 27919(04), \$850.00, 0.04%

- f) Kay County - Ct. St. - TAP-236N(063)TP / 33000(04), \$2,969.50, 0.39%
- g) Kay County - Ct. St. - STP-236B(062)UR / 33687(04), \$5,280.00, 0.36%
- h) Kingfisher County - US-81/SH-33 - STP-237B(049)PM / 30445(04), \$50,000.00, 4.00%
- i) Lincoln County - SH-66B - STP-241C(059)PM / 28034(04), \$26,744.40, 1.13%
- j) Logan County - SH-74 - SSR-242C(083)SR / 33810(04), \$10,178.58, 0.76%
- k) Love County - I-35 - HSIPIG-3500-(014)IT / 31603(04), \$28,394.15, 4.52%
- l) Marshall County - Co. Rd. - STP-248D(044)CI / 29305(04), \$110,972.91, -16.80% Underrun
- m) Murray County - SH-7 WB - SBR-3500(080)SB / 31309(04), \$330.00, 0.02%
- n) Muskogee County - SH-72 - SBR-251C(096)SB / 32723(04), \$11,248.72, 0.63%
- o) Muskogee County - SH-165 - SSR-251N(099)SR / 32787(04), \$5.50, -0.00% Underrun
- p) Oklahoma County - I-44 - NHPPI-4400-(037)PM / NHPPI-4400-(039)PM / NHPPI-4400-(040)PM / NHPPI-4400-(041)PM / NHPPI-4400-(042)PM / NHPPI-4400-(043)PM / 31006(04), \$38,896.41, 0.32%
- q) Osage County - SH-123 - STP-257C(071)3P / 31942(04), \$5,500.00, 0.34%
- r) Ottawa County - SH-125 - STP-258C(065)PM / 27016(04), \$52,037.48, 1.93%
- s) Payne County - I-35 - E-SAP-3500(088)ES / 34596(04), \$6,819.84, 1.06%
- t) Pittsburg County - Co. Rd. - STP-261D(083)CI / 29996(04), \$9,432.99, 1.25%
- u) Pontotoc County - US-377 - SSP-262B(041)SS / 23285(08), \$668.80, 0.23%
- v) Pontotoc County - SH-99 - STP-162B(207)SS / 23286(10), \$19,558.67, 0.32%
- w) Sequoyah County - I-40 - MC-268C(070) / 34713(04), \$31,798.00, 4.64%
- x) Tulsa County - Ct. St. - ACNHPPI-2440-(017)FP / 28859(04), \$37,673.23, 0.72%
- y) Tulsa County - Ct. St. - STP-272B(277)IG / 29326(04), \$39,816.26, 0.47%
- z) Tulsa County - Ct. St. - TAP-272D(280)IG / 31620(04), \$24,177.62, 4.84%
- aa) Tulsa County - Ct. St. - TAP-272E(282)IG / 33039(04), \$1.43, -0.00% Underrun

9. Change Orders with Cumulative Total Greater than \$75,000.00

- a) Cimarron County - US-64 - NHPP-034N(001)PM / 20941(04), #6, \$34,924.67, 0.32%
- b) Cimarron County - US-64 - NHPP-034N(001)PM / 20941(04), #7, \$48,000.00, 0.44%
- c) Cleveland County - Ct. St. - STP-214C(080)AG / 29289(04), \$16,930.88, 0.61%
- d) Cleveland County - Ct. St. - STP-214B(091)AG / 30606(04), \$95,660.13, 6.49%
- e) Comanche County - Ct. St. - STP-116B(137)MS / 23410(04), \$28,566.71, 0.34%
- f) Garvin County - Co. Rd. - CIRB-225C(073)RB / CIRB-225C(074)RB / 27848(04), \$44,719.07, 0.88%
- g) Haskell County - Co. Rd. - CIRB-231C(040)RB / 28499(04), \$166,677.88, 2.22%
- h) Haskell County - SH-2 - STP-231B(042)PM / 31195(04), \$85,130.36, 6.81%
- i) Jefferson County - SH-79 - STP-234B(014)SS / 27977(04), \$63,185.60, 0.57%
- j) Kiowa County - SH-44 - STP-275C(035)SS / ACSTP-238C(037)SS / 28999(04), \$3,986.15, 0.12%
- k) Logan County - Co. Rd. - STP-242C(070)AG / 32641(04), \$1,489,390.67, 47.19%
- l) McClain County - I-35/CNTY RD - NHPPI-3500-(074)PM / 27220(04), \$13,459.84, 0.15%
- m) Murray County - SH-7 - TAP-250D(022)TP / SSP-250N(018)PM / 33320(04), \$79,748.50, 2.27%
- n) Oklahoma County - I-235 - NHPPI-2350-(009)PM / 09033(27), \$51,846.00, 0.05%
- o) Oklahoma County - I-44 - NHPPI-4400-(037)PM / NHPPI-4400-(039)PM / NHPPI-4400-(040)PM / NHPPI-4400-(041)PM / NHPPI-4400-(042)PM / NHPPI-4400-(043)PM / 31006(04), \$50,000.00, 0.18%
- p) Oklahoma County - SH-66 - TAP-255C(490)TP / NHPP-255N(489)EH / 32984(04), \$106,294.75, -3.04% Underrun
- q) Osage County - US-60 - SBR-257N(080)SB / 32732(04), \$24,146.85, 1.96%
- r) Rogers County - US-412/SH-88/S4200RD - SSP-266N(056)SS / 23170(10), \$141,220.10, 1.85%
- s) Stephens County - SH-29 - STP-169B(134)PM / 24412(04), \$10, \$1,030.38, 0.01%
- t) Stephens County - SH-29 - STP-169B(134)PM / 24412(04), #11, \$59,690.97, 0.48%
- u) Tillman County - US-70 - STP-271C(067)PM / 29514(04), #3, \$28,435.82, 0.89%
- v) Tillman County - US-70 - STP-271C(067)PM / 29514(04), #4, \$90,000.00, 2.81%
- w) Tulsa County - US-64 - STP-272C(202) / 27937(04), \$97,295.34, 2.49%
- x) Tulsa County - Ct. St. - STP-272B(278)CI / 30703(04), \$378.47, 0.01%
- y) Washita County - US-183 - MC-009N(102)MD / 34770(04), \$142,312.03, 9.47%

ITEMS TO BE PRESENTED BY THE COMPTROLLER DIVISION

10. Proposed Bid Openings – Mr. Hackney, Project Funding Manager

- a) Final March, 2021 Proposed Bid Opening
- b) Tentative April, 2021 Proposed Bid Opening
- c) Tentative May, 2021 Proposed Bid Opening

ITEMS TO BE PRESENTED BY THE DIRECTOR OF FINANCE AND ADMINISTRATION;

11. Damages to State Property – Ms. Hilmes

- a) Mr. Hernandez – Cleveland County - \$247.40
- b) Mr. Pappan – Kay County - \$695.07

ITEM PRESENTED BY LOCAL GOVERNMENT DIVISION ENGINEER – Ms. Williams

12. Request for Final Approval of the County Designation Order for FY-2021

In accordance with Title 69 O.S. § 636.3 Subsection B) this Designation Order is prepared for use by the County Road Machinery & Equipment Revolving Fund and has been approved by the Department of Transportation County Advisory Board (CAB)

ITEM TO BE PRESENTED BY THE DIRECTOR – Mr. Gatz

13. Director's Report

Information Only: No Commission action required.

ITEM TO BE PRESENTED BY COMMISSION CHAIRMAN

14. Adjournment Motion

The Oklahoma Department of Transportation (ODOT) ensures that no person or groups of persons shall, on the grounds of race, color, sex, religion, national origin, age, disability, retaliation or genetic information, be excluded from participation in, be denied the benefits of, or be otherwise subjected to discrimination under any and all programs, services, or activities administered by ODOT, its recipients, sub-recipients, and contractors. To request an accommodation please contact the ADA Coordinator at 405-521-4140 or the Oklahoma Relay Service at 1-800-722-0353. If you have any ADA or Title VI questions email ODOT-ada-titlevi@odot.org.

FOR PRESENTATION AT COMMISSION MEETING OF JANUARY 11, 2021

AGENDA ITEM NO.: 2

SUBJECT: Programming of Federal Railroad Crossing Safety Funds-Section 130 Title 23 Funds

COUNTIES: Kiowa

COMMISSIONER DISTRICTS: V

Item(s) below qualify for safety improvements in Oklahoma under Section 130 of the Highway Safety Act. These railroad crossing improvements could include signal installations, signal preemption improvements, surface installation, concrete median installation, crossing elimination by closure, lens upgrades, crossbucks, advance warning signs, pavement markings and clearing of sight obstructions at grade crossings.

Kiowa County – Commission District V

Near Snyder, Construction funding for a Signal project which includes the installation of pedestal-mounted flashing light signals with gate arms at the intersection of SH-54 with the Stillwater Central Railroad mainline. Total cost is \$262,921.00 90% Federal-aid grade crossing funds and 10% matching State funds for the signals.

COMMISSION APPROVAL IS RECOMMENDED.

PROJECT LIST

FEDERAL AT-GRADE RAILROAD CROSSING SAFETY FUNDS SECTION 130 TITLE 23 FUNDS

STATE OF OKLAHOMA RAILROAD MAINTENANCE REVOLVING FUNDS

PART NO	COUNTY	C D	HIGHWAY/ ROADWAY	DESCRIPTION	DOT ID NUMBER	FEDERAL FUNDS	STATE FUNDS	RAILROAD COMPANY FUNDS	CITY/ COUNTY FUNDS	TOTAL FUNDS
	Kiowa	5	SH-54	SLWC	669651N	\$236,628.90	\$26,292.10	\$0.00	\$0.00	\$262,921.00
			Grand Totals			\$236,628.90	\$26,292.10	\$0.00	\$0.00	\$262,921.00

FOR PRESENTATION AT COMMISSION MEETING OF JANUARY 11, 2021

AGENDA ITEM NO.: 3

SUBJECT: Modification of Federal Railroad Crossing Safety Funds-Section 130 Title 23 Funds

COUNTIES: Canadian

COMMISSIONER DISTRICTS: IV

Item(s) below qualify for safety improvements in Oklahoma under Section 130 of the Highway Safety Act. These railroad crossing improvements could include signal installations, signal preemption improvements, surface installation, concrete median installation, crossing elimination by closure, lens upgrades, crossbucks, advance warning signs, pavement markings and clearing of sight obstructions at grade crossings.

Canadian County – Yukon – SH-4/Mustang Road – JP33075(04) - Stillwater Central Railroad - \$5,568.67 - 18.63%

In Yukon, at the crossing of SH-4/Mustang Road with the Union Pacific Railroad Company mainline, additional funding of a traffic signal pre-emption project which was originally commissioned on November 7, 2016. The additional authorization is being requested due to an overrun on boring and wire during construction at a total of \$5,568.67. The revised total cost of the project is \$35,462.67

COMMISSION APPROVAL IS RECOMMENDED.

PROJECT LIST

FEDERAL AT-GRADE RAILROAD CROSSING SAFETY FUNDS SECTION 130 TITLE 23 FUNDS

STATE OF OKLAHOMA RAILROAD MAINTENANCE REVOLVING FUNDS

PART NO	COUNTY	C D	HIGHWAY/ ROADWAY	DESCRIPTION	DOT ID NUMBER	FEDERAL FUNDS	STATE FUNDS	RAILROAD COMPANY FUNDS	CITY/ COUNTY FUNDS	TOTAL FUNDS
	Canadian	4	SH-4/Mustang Road	Union Pacific Railway	596857J	\$5,011.80	\$556.87	\$0.00	\$0.00	\$5,568.67
			Grand Totals			\$5,011.80	\$556.87	\$0.00	\$0.00	\$5,568.67

FOR PRESENTATION AT THE JANUARY 11, 2021 COMMISSION MEETING

AGENDA ITEM NO.: 4(a)

SUBJECT: Land Sale, District II, FAP-48(6), Part of Parcel 2,
Section 34, T5S, R5E, Marshall County.

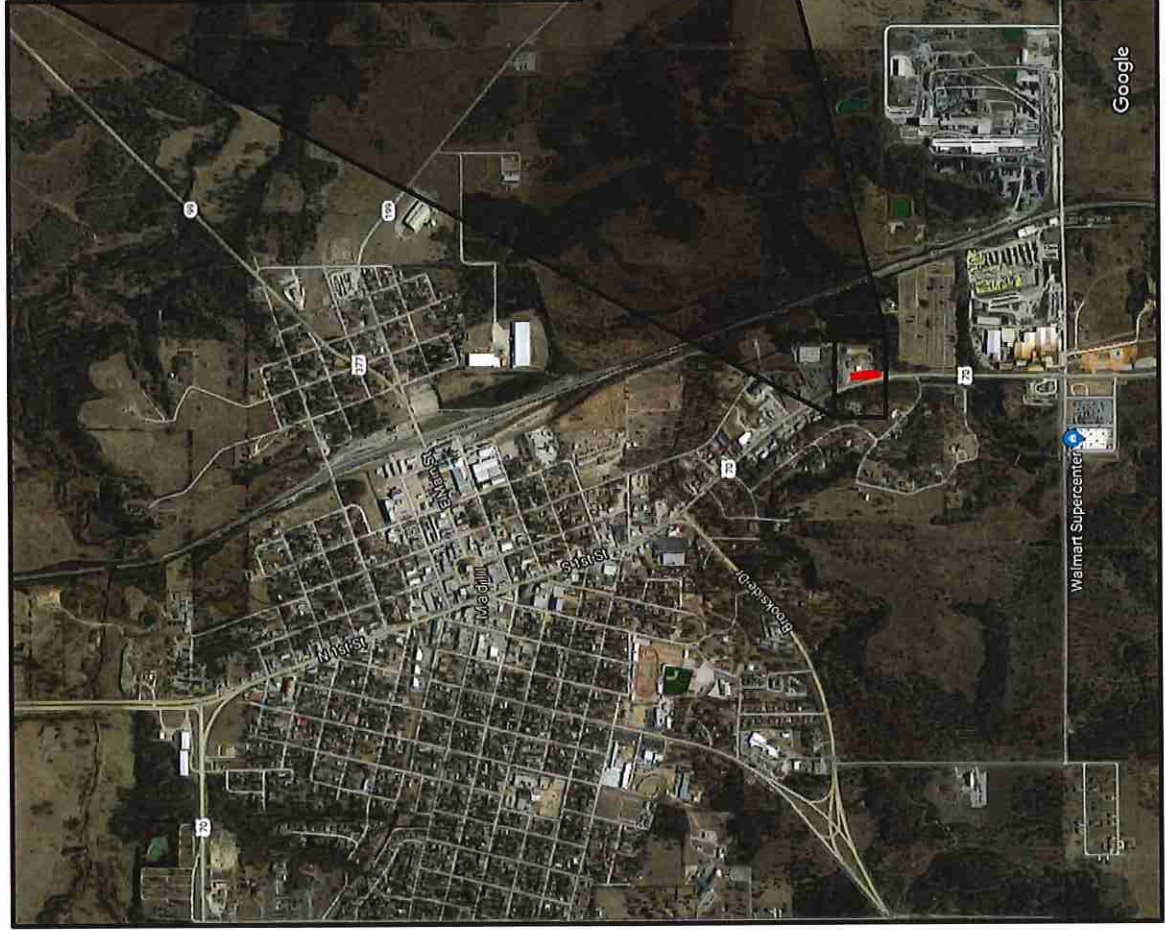
LOCATION: Located approximately 0.5 mile south of the SH-99 / US-70
intersection in Madill, OK.

In 1931, the Oklahoma Department of Transportation acquired by easement 10.20 acres for right-of-way as a partial taking for the construction of US Highway No. 70 on the above referenced project.

The Department received a request from Roland Rogers, the sole abutting owner, is requesting the Department to dispose of a portion of Parcel 2 on the above referenced project. Roland Rogers owns the abutting property to the east and would like to incorporate any excess portion of Parcel 2 into his abutting land. The Department has determined that 0.17 acres of Parcel 2 is surplus to the Department's needs.

Roland Rogers has accepted the Department's individual offer for the 0.17 acre property based on the current fair market value of \$1,110.00.

We recommend approval of this sale.



Limits of No Access

Existing Right-of-Way

Requested Area

Easement



LOCATION MAP

US-70 | FAP-48(6) | Marshall County

SUBJECT PROPERTY: Part of Parcel 02
SURPLUS LAND: ≈ 0.17 acres
SALE PRICE: \$1,110.00

FOR PRESENTATION AT THE JANUARY 11, 2021 COMMISSION MEETING

AGENDA ITEM NO.: 4(b)

SUBJECT: Land Sale, District VIII, 27075(05), Part of Parcel 8,
Part of Lots 5 & 6, Block 3, Taylor-Irwin Addition in
Mounds, OK, Creek County.

LOCATION: Located at the NE corner of the intersection of 16th Street
and US-75-A in Mounds, OK

In 2014, the Oklahoma Department of Transportation acquired in fee 0.31 acres for right-of-way as a total taking for the re-construction of US Highway No. 75-A on the above referenced project.

The Department received a request from Jeff & Patti Wann, the sole abutting owners, are requesting the Department to dispose of a portion of Parcel 8 on the above referenced project. Jeff & Patti Wann own the abutting property to the north and would like to incorporate any excess portion of Parcel 8 into their abutting land. The Department has determined that 0.26 acres of Parcel 8 is surplus to the Department's needs.

Jeff & Patti Wann have accepted the Department's individual offer for the 0.26 acre property based on the current fair market value of \$1,800.00.

We recommend approval of this sale.



Limits of No Access

Existing Right-of-Way

Requested Area

Easement



LOCATION MAP

SUBJECT PROPERTY: Part of Parcel 08
SURPLUS LAND: ≈ 0.26 acres
SALE PRICE: \$1,800.00

OKLAHOMA
 Transportation US-75A | 27075(05) | Creek County

FOR PRESENTATION AT THE COMMISSION MEETING ON JANUARY 11, 2021

AGENDA ITEM NO: 5

SUBJECT: Programming Item

Oklahoma County, Commission District IV

The Department requests approval to program a project to repair vehicle impact damage to NW 36th St. over I-44, located 3.3 miles north of I-40 in Oklahoma County. The estimated cost of this project is \$50,000 using State-Aid Funds. This project can be ready for a May 2021 letting. The party responsible for the damage is known.

APPROVAL IS RECOMMENDED

FOR PRESENTATION AT THE COMMISSION MEETING ON JANUARY 11, 2021

AGENDA ITEM NO: 6

SUBJECT: Engineering Contracts

a) Cherokee County – Commission District I (CI-2114)

The Department has selected Garver, LLC to prepare construction plans for SH-82: beginning 1.4 miles north of US-62/SH-51 junction, north approximately 6.5 miles (Phase 1) and SH-82: beginning 1.4 miles north of US-62/SH-51 junction, north approximately 6.5 miles (Phase 2). Services to include geotechnical investigations, final design and will culminate in the submittal of plans, specifications and estimates, (PS&E).

CI-2114	Garver, LLC
Total Not to Exceed Amount	\$1,144,132.00

Project JP- 27101(04)(09)(10) are included in the 8 year construction work plan with a scheduled let date in FFY 2022. The total estimate for construction for this project is \$30,300,000.00.

b) Haskell County – Commission District I (CI-2261A)

The Department has selected CONSOR Engineers, LLC to prepare construction plans for SH-71: from 1.15 miles north of Pittsburg County Line, north 0.3 miles. Services to include survey, environmental, geotechnical investigations, pavement design, preliminary and final design and will culminate in the submittal of plans, specifications and estimates, (PS&E).

CI-2261A	CONSOR Engineers, LLC
Total Not to Exceed Amount	\$460,335.00

Project JP-32824(04) is included in the 8 year construction work plan with a scheduled let date in FFY 2026. The total estimate for construction for this project is \$3,700,000.00.

c) McIntosh County – Commission District I (CI-2266A)

The Department has selected Crafton Tull and Associates, Inc. to prepare construction plans for US-69: from McIntosh/Muskogee County Line, south 2.5 miles. Services to include geotechnical investigations, pavement design, preliminary and final design and will culminate in the submittal of plans, specifications and estimates, (PS&E).

CI-2266A	Crafton Tull and Associates, Inc.
Total Not to Exceed Amount	\$228,083.00

Project JP-32822(04) is included in the 8 year construction work plan with a scheduled let date in FFY 2025. The total estimate for construction for this project is \$6,440,000.00.

d) Okmulgee County – Commission District I (CI-2266C) - JRW

The Department has selected Halff Associates, Inc. to prepare construction plans for US-75: from 3 miles south of US-62E, north 3 miles (northbound) & from 1 mile south of US-62E, north 1 mile (southbound). Services to include survey, geotechnical investigations, pavement design, preliminary and final design and will culminate in the submittal of plans, specifications and estimates, (PS&E).

CI-2266C	Halff Associates, Inc.
Total Not to Exceed Amount	\$326,700.00

Project JP-33466(04) is included in the 8 year construction work plan with a scheduled let date in FFY 2025. The total estimate for construction for this project is \$1,500,000.00.

e) Sequoyah County – Commission District I (CI-2266B)

The Department has selected Guy Engineering Services, Inc. to provide preliminary engineering and prepare construction plans for I-40: from 0.15 miles east of mile post 299 to 0.35 miles east of Dwight Mission Road. Services to include survey, geotechnical investigations, pavement design, preliminary and final design and will culminate in the submittal of plans, specifications and estimates, (PS&E).

CI-2266B	Guy Engineering Services, Inc.
Total Not to Exceed Amount	\$649,325.00

Project JP-33456(04) is included in the 8 year construction work plan with a scheduled let date in FFY 2028. The total estimate for construction for this project is \$17,000,000.00.

f) Wagoner County – Commission District I (CI-2220A)

The Department has selected Meshek and Associates, LLC to prepare construction plans for SH-51: intersection modification at mile post 2.20 (91st street south). Services to include survey, environmental, geotechnical investigations, pavement design, preliminary and final design and will culminate in the submittal of plans, specifications and estimates, (PS&E).

CI-2220A	Meshek and Associates, LLC
Total Not to Exceed Amount	\$292,457.00

Project JP-30648(04) is included in the 8 year construction work plan with a scheduled let date in FFY 2024. The total estimate for construction for this project is \$1,300,000.00.

g) Muskogee County – Commission District I (CI-2264A)

The Department has selected MKEC Engineering, Inc. to prepare construction plans for US-64/SH-16/US-64/SH-72 intersection (bridge over SH-72). Services to include survey, environmental, geotechnical investigations, pavement design, preliminary and final design and will culminate in the submittal of plans, specifications and estimates, (PS&E).

CI-2264A	MKEC Engineering, Inc.
Total Not to Exceed Amount	\$557,518.00

Project JP-32823(04) is included in the 8 year construction work plan with a scheduled let date in FFY 2028. The total estimate for construction for this project is \$4,350,000.00.

h) Bryan County – Commission District II (CI-2261D)

The Department has selected MKEC Engineering, Inc. to prepare construction plans for US-69 northbound and southbound over West Arkansas Street, K.R.R. and Main Street, 3.77 & 3.88 miles north of junction US-69 Business. Services to include survey, environmental, geotechnical investigations, pavement design, preliminary and final design and will culminate in the submittal of plans, specifications and estimates, (PS&E).

CI-2261D	MKEC Engineering, Inc.
Total Not to Exceed Amount	\$1,026,995.00

Project JP-33871(04) & 33872(04) is included in the 8 year construction work plan with a scheduled let date in FFY 2026 & 2027. The total estimate for construction for this project is \$20,000,000.00.

i) Choctaw County – Commission District II (CI-2264B)

The Department has selected Olsson, Inc. to prepare construction plans for US-70: beginning at junction SH-209, extending east 5.76 miles to McCurtain County Line. Services to include survey, environmental, geotechnical investigations, pavement design, preliminary and final design and will culminate in the submittal of plans, specifications and estimates, (PS&E).

CI-2264B	Olsson, Inc.
Total Not to Exceed Amount	\$1,227,300.00

Project JP-31854(04) is included in the 8 year construction work plan with a scheduled let date in FFY 2027. The total estimate for construction for this project is \$20,795,000.00.

j) Cleveland County – Commission District III (CI-2264C)

The Department has selected EST, Inc. to prepare construction plans for SH-9: beginning at 156th street north in Norman, east approximately 4.0 miles to Pecan Creek Bridge (near Pottawatomie County Line). Services to include survey, environmental, geotechnical investigations, pavement design, preliminary & final design and will culminate in the submittal of plans, specifications and estimates, (PS&E).

CI-2264C	EST, Inc.
Total Not to Exceed Amount	\$1,491,639.00

Project JP-32758(04) is included in the 8 year construction work plan with a scheduled let date in FFY 2028. The total estimate for construction for this project is \$16,090,000.00.

k) Garvin County – Commission District III (CI-2223E)

The Department has selected MacArthur Associated Consultants to prepare construction plans for SH-145: over I-35. Services to include environmental, geotechnical investigations, pavement design, preliminary and final design and will culminate in the submittal of plans, specifications and estimates, (PS&E).

CI-2223E	MacArthur Associated Consultants
Total Not to Exceed Amount	\$412,545.00

Project JP-33846(04) is included in the 8 year construction work plan with a scheduled let date in FFY 2026. The total estimate for construction for this project is \$2,500,000.00.

l) Pottawatomie County – Commission District III (CI-2261B)

The Department has selected EST, Inc. to prepare construction plans for SH-39 over Unnamed Creeks, 2.0 miles east of junction US-177. Services to include survey, environmental, geotechnical investigations, pavement design, preliminary and final design and will culminate in the submittal of plans, specifications and estimates, (PS&E).

CI-2261B	EST, Inc.
Total Not to Exceed Amount	\$772,900.00

Project JP-31263(04) is included in the 8 year construction work plan with a scheduled let date in FFY 2027. The total estimate for construction for this project is \$2,900,028.00.

m) Beckham County – Commission District V (CI-2269A)

The Department has selected Cowan Group Engineering, LLC to prepare construction plans for SH-152: beginning on the east side of the SH-30 junction and extending east 4.1 miles. Services to include geotechnical investigations, pavement design, preliminary and final design and will culminate in the submittal of plans, specifications and estimates, (PS&E).

CI-2269A	Cowan Group Engineering, LLC
Total Not to Exceed Amount	\$611,380.00

Project JP-30995(04) is included in the 8 year construction work plan with a scheduled let date in FFY 2026. The total estimate for construction for this project is \$9,176,280.00.

n) Beaver County – Commission District VI (CI-2268B)

The Department has selected MacArthur Associated Consultants to prepare construction plans for US-64 beginning at junction US-64/US-83, extending east 6.0 miles. Services to include environmental, geotechnical investigations, pavement design, preliminary and final design and will culminate in the submittal of plans, specifications and estimates, (PS&E).

CI-2268B	MacArthur Associated Consultants
Total Not to Exceed Amount	\$650,740.00

Project JP-33797(04) is included in the 8 year construction work plan with a scheduled let date in FFY 2027. The total estimate for construction for this project is \$14,400,000.00.

o) Comanche County – Commission District VII (CI-2267)

The Department has selected Freese & Nichols, Inc. to prepare construction plans for US-62: from 82nd street in Lawton, east to I-44. Services to include survey, environmental, geotechnical investigations, pavement design and preliminary & final design and will culminate in the submittal of plans, specifications, and estimates. (PS&E)).

CI-2267	Freese & Nichols, Inc.
Total Not to Exceed Amount	\$779,900.00

Project JP- 34249(04) is included in the 8 year construction work plan with a scheduled let date in FFY 2027. The total estimate for construction for this project is \$2,300,000.00.

p) Stephens County – Commission District VII (CI-2265)

The Department has selected Olsson, Inc. to provide preliminary engineering and prepare construction plans for the Duncan Bypass: interchange construction at Elk Avenue. Services to include survey, environmental, geotechnical investigations, pavement design, preliminary engineering, and preliminary & final design and will culminate in the submittal of plans, specifications, and estimates. (PS&E).

CI-2265	Olsson, Inc.
Total Not to Exceed Amount	\$378,945.00

Project JP- 34250(04) is included in the 8 year construction work plan with a scheduled let date in FFY 2027. The total estimate for construction for this project is \$5,000,000.00.

q) Craig County – Commission District VIII (CI-2220B)

The Department has selected Atkins North America, Inc. to prepare construction plans for Intersection at US-60 & SH-82. Services to include survey, environmental, geotechnical investigations, pavement design and preliminary & final design and will culminate in the submittal of plans, specifications and estimates, (PS&E).

CI-2220B	Atkins North America, Inc.
Total Not to Exceed Amount	\$213,560.00

Project JP-32696(04) is included in the 8 year construction work plan with a scheduled let date in FFY 2025. The total estimate for construction for this project is \$609,000.00.

APPROVAL IS RECOMMENDED

FOR PRESENTATION AT THE COMMISSION MEETING ON JANUARY 11, 2021

AGENDA ITEM NO: 7

SUBJECT: Engineering Contract Supplements

a) Seminole County – Commission District III (CI-2070, Supplement 4)

The Department previously authorized Benham Design, LLC to prepare final design plans for SH-99: from 3.05 miles south of US-270, south 4.0 miles (new parallel lanes & resurface existing lanes) and SH-99: from 7.05 miles south of US-270, south 4.0 miles (new parallel lanes & resurface existing lanes). This supplement is for additional engineering to develop final construction plans.

CI-2070	Benham Design, LLC
Supplement Not to Exceed Amount	\$140,040.50

This brings the total engineering contract cost, including this supplement to \$1,617,897.50.

Project JP-23289(04) is included in the 8 year construction work plan with a scheduled let date in FFY 2026. The total estimate for construction for this project is \$19,592,640.00.

b) Oklahoma County – Commission District IV (CI-2120, Supplement 1)

The Department previously authorized Poe and Associates, Inc. to prepare final design plans for I-35: Frontage Road modifications from Memorial Road to SH-66. This supplement is for additional engineering to develop final construction plans.

CI-2120	Poe and Associates, Inc.
Supplement Not to Exceed Amount	\$1,597,156.00

This brings the total engineering contract cost, including this supplement to \$3,064,985.00.

JP-32425(05) is included in the 8 year construction work plan with a scheduled let date in FFY 2024. Total estimate for construction of the project is \$10,211,830.00.

c) **Custer County – Commission District V (CI-1376A, Supplement 9)**

The Department previously authorized Atkins North America, Inc. to perform preliminary engineering and to prepare final design plans for SH-54, beginning 1.8 miles north of the I-40 junction and extend north 5.0 miles. This supplement is for additional engineering to develop final construction plans.

EC-1376A	Atkins North America, Inc.
Supplement Not to Exceed Amount	\$33,900.00

This brings the total engineering contract cost, including this supplement to \$780,374.00.

JP-24145(04) is included in the 8 year construction work plan with a scheduled let date in FFY 2025. Total estimate for construction of the project is \$10,309,679.00.

APPROVAL IS RECOMMENDED

Change Orders with Cumulative Total of \$75,000 or Less (Information Only)

JANUARY 11, 2021 Commission Meeting

ITEM	COUNTY	PROJECT NUMBER	FED OVER	CONTRACT	JPN	CHANGE ORDER	UNDER/ OVER RUN
8A	CARTER	STP-210D(070)CI	<input type="checkbox"/>	190207	3046804	002	-\$42,197.40
8B	CUSTER	MC-220F(073)MD	<input type="checkbox"/>	200218	3477104	002	\$1,375.00
8C	HARMON	CIRB-229C(016)RB	<input type="checkbox"/>	200251	2871004	001	\$51,565.88
8D	HUGHES	STP-232C(041)CI	<input type="checkbox"/>	160090	2857504	006	\$8,273.20
8E	JACKSON	STP-233C(038)PM	<input type="checkbox"/>	180356	2791904	004	\$850.00
8F	KAY	TAP-236N(063)TP	<input type="checkbox"/>	200154	3300004	001	\$2,969.50
8G	KAY	STP-236B(062)UR	<input type="checkbox"/>	190198	3368704	003	\$5,280.00
8H	KINGFISHER	STP-237B(049)PM	<input type="checkbox"/>	190177	3044504	004	\$50,000.00
8I	LINCOLN	STP-241C(059)PM	<input type="checkbox"/>	200229	2803404	001	\$26,744.40
8J	LOGAN	SSR-242C(083)SR	<input type="checkbox"/>	200071	3381004	003	\$10,178.58
8K	LOVE	HSPIG-3500-(014)IT	<input type="checkbox"/>	170286	3160304	002	\$28,394.15
8L	MARSHALL	STP-248D(044)CI	<input type="checkbox"/>	190181	2930504	002	-\$110,972.91
8M	MURRAY	SBR-3500(080)SB	<input type="checkbox"/>	190217	3130904	004	\$330.00
8N	MUSKOGEE	SBR-251C(096)SB	<input type="checkbox"/>	200159	3272304	001	\$11,248.72
8O	MUSKOGEE	SSR-251N(099)SR	<input type="checkbox"/>	200074	3278704	001	-\$5.50
8P	OKLAHOMA	NHPPI-4400-(037)PM / NHPPI-4400-(039)PM / NHPPI-4400-(040)PM / NHPPI-4400-(041)PM / NHPPI-4400-(042)PM / NHPPI-4400-(043)PM	<input type="checkbox"/>	190120	3100604	001	\$38,896.41
8Q	OSAGE	STP-257C(071)3P	<input type="checkbox"/>	190129	3194204	002	\$5,500.00
8R	OTTAWA	STP-258C(065)PM	<input type="checkbox"/>	200022	2701604	001	\$52,037.48
8S	PAYNE	E-SAP-3500(088)ES	<input type="checkbox"/>	190392	3459604	005	\$6,819.84
8T	PITTSBURG	STP-261D(083)CI	<input type="checkbox"/>	190090	2999604	002	\$9,432.99
8U	PONTOTOC	SSP-262B(041)SS	<input type="checkbox"/>	200210	2328508	001	\$668.80
8V	PONTOTOC	STP-162B(207)SS	<input type="checkbox"/>	190132	2328610	001	\$19,558.67
8W	SEQUOYAH	MC-268C(070)	<input type="checkbox"/>	200184	3471304	001	\$31,798.00
8X	TULSA	ACNHPPI-2440-(017)FP	<input type="checkbox"/>	180148	2885904	005	\$37,673.23
8Y	TULSA	STP-272B(277)IG	<input type="checkbox"/>	190389	2932604	004	\$39,816.26
8Z	TULSA	TAP-272D(280)IG	<input type="checkbox"/>	190333	3162004	001	\$24,177.62
8AA	TULSA	TAP-272E(282)IG	<input type="checkbox"/>	200087	3303904	001	-\$1.43

Change Orders with Cumulative Total of \$75,000 or Less (Information Only)

January 11, 2021 Commission Meeting

Project Number:	STP-210D(070)CI	CO APPROVAL:	Nov. 30, 2020	AGENDA ITEM	
		Contract ID:	190207	8A	
Contractor :	K & R BUILDERS, INC.	Job Piece No.:	30468(04)		
		Highway No.:	COUNTY ROAD		
Designer:	CEC CORPORATION	Div. / County.:	07 / CARTER		
Description:	BRIDGE AND APPROACHES COUNTY ROAD (EW-176/CARGO ROAD): OVER RATLIFF WEST CREEK, 0.8 MILES WEST OF THE SH-76 JUNCTION NEAR RATLIFF CITY. PROJECT LENGTH = 0.156 MILE				
Contract Amount:	\$912,955.95	Funds Available:	\$912,955.95	Funds Paid(%) :	88%
Change Order	2	Original Time Used:	104%	Revised Time Used:	104%

Change Order No. 2 approves a supplemental agreement resulting in an underrun to the contract in the amount of \$42,197.40.

Engineering: This change documents the underrun of the Class C concrete pay items due to being significantly overestimated in the plans. This change provides for the unrecoverable expenses and lost overhead incurred by the contractor due to the significant underrun of this major pay item.

NEW ITEMS			\$4,688.60
Class C Concrete (Lost Overhead)	68.00 CY	\$23.80 /CY	\$1,618.40
Class C Concrete	129.00 CY	\$23.80 /CY	\$3,070.20
UNDERRUN ITEM			-\$46,886.00
Class C Concrete	-68.00 CY	\$238.00 /CY	-\$16,184.00
Class C Concrete	-129.00 CY	\$238.00 /CY	-\$30,702.00

CHANGE ORDER ACTIONS						
CHANGE ORDER NO.	(+) Overrun (-) Underrun Amount (\$)	%	Appropriated Amount (\$)	%	Supplemental Agreement Amount(\$)	%
2	-\$42,197.40	-4.62%	\$0.00	0.00%	\$0.00	0.00%
3	\$0.00	0.00%	\$0.00	0.00%	\$0.00	0.00%
TOTAL	-\$42,197.40	-4.62%	\$0.00	0.00%	\$0.00	0.00%

Change Orders with Cumulative Total of \$75,000 or Less (Information Only)
January 11, 2021 Commission Meeting

Project Number:	MC-220F(073)MD		CO APPROVAL:	Nov. 30, 2020	AGENDA ITEM
			Contract ID:	200218	
Contractor :	HASKELL LEMON CONSTRUCTION CO.		Job Piece No.:	34771(04)	8B
			Highway No.:	SH-33	
Designer:	OKLA. DEPT. OF TRANSPORTATION		Div. / County.:	05 / CUSTER	
Description:	RESURFACE (ASPHALT) SH-33: FROM 3.0 MILES EAST OF THE SH-54 JUNCTION, EXTEND NORTHEAST NEAR THOMAS. PROJECT LENGTH = 7.500 MILES				
Contract Amount:	\$1,921,971.00	Funds Available:	\$1,925,746.00	Funds Paid(%) :	88%
Change Order	2	Original Time Used:	26%	Revised Time Used:	26%

Change Order No. 2 approves a supplemental agreement and an additional appropriation in the amount of \$1,375.00.

Engineering: This change provides payment to replace the railroad crossing symbol at section line E0830 due to the existing markings being covered by the asphalt overlay with no provision made in the contract for their replacement.

NEW ITEM			\$1,375.00
Traffic Stripe (Plastic) (Symbols)	1.00 EA	\$1,375.00 /EA	\$1,375.00

CHANGE ORDER ACTIONS						
CHANGE ORDER NO.	(+) Overrun (-) Underrun Amount (\$)	%	Appropriated Amount (\$)	%	Supplemental Agreement Amount(\$)	%
1	\$2,400.00	0.12%	\$2,400.00	0.12%	\$2,400.00	0.12%
2	\$1,375.00	0.07%	\$1,375.00	0.07%	\$1,375.00	0.07%
TOTAL	\$3,775.00	0.20%	\$3,775.00	0.20%	\$3,775.00	0.20%

Change Orders with Cumulative Total of \$75,000 or Less (Information Only)
January 11, 2021 Commission Meeting

Project Number:	CIRB-229C(016)RB		CO APPROVAL:	Nov. 17, 2020	AGENDA ITEM
			Contract ID:	200251	8C
Contractor :	FRONTIER BRIDGE, INC.		Job Piece No.:	28710(04)	
			Highway No.:	COUNTY ROAD	
Designer:	HUITT - ZOLLARS, INC.		Div. / County.:	05 / HARMON	
Description:	GRADE, DRAIN, SURFACE, AND BRIDGE COUNTY ROADS (N1740 RD/E1690 RD (LOUIS RD)): E1690 RD, FROM SH-5 EXT WEST. N1740 RD, FROM E1690 EXT NORTH NEAR GOULD. PROJECT LENGTH = 6.984 MILES				
Contract Amount:	\$6,351,482.82	Funds Available:	\$6,403,048.70	Funds Paid(%) :	4%
Change Order	1	Original Time Used:	5%	Revised Time Used:	5%

Change Order No. 1 approves an additional appropriation in the amount of \$51,565.88.

Engineering: This change provides payment for the overrun of several pay items required to construct Bridge A as specified due to the quantities of the wingwalls, curbs and curtain walls being inadvertently omitted from the plans; and for the overrun of several pay items required to reconstruct Structure No. 7 in lieu of extending it as planned due to the existing structure being a masonry structure.

OVERRUN ITEMS				\$51,565.88
Structural Excavation Unclassified	3.00 CY	\$31.50 /CY		\$94.50
Class AA Concrete	15.00 CY	\$667.22 /CY		\$10,008.30
Reinforcing Steel	909.00 LB	\$1.18 /LB		\$1,072.62
Removal of Existing Structures	1.00 EA	\$10,500.00 /EA		\$10,500.00
Class AA Concrete	34.00 CY	\$676.59 /CY		\$23,004.06
Reinforcing Steel	5,380.00 LB	\$1.28 /LB		\$6,886.40

CHANGE ORDER ACTIONS						
CHANGE ORDER NO.	(+) Overrun (-) Underrun Amount (\$)	%	Appropriated Amount (\$)	%	Supplemental Agreement Amount(\$)	%
1	\$51,565.88	0.81%	\$51,565.88	0.81%	\$0.00	0.00%
TOTAL	\$51,565.88	0.81%	\$51,565.88	0.81%	\$0.00	0.00%

Change Orders with Cumulative Total of \$75,000 or Less (Information Only)
January 11, 2021 Commission Meeting

Project Number:	STP-232C(041)CI		CO APPROVAL:	Nov. 10, 2020	AGENDA ITEM
			Contract ID:	160090	8D
Contractor :	GLOVER & ASSOCIATES, INC.		Job Piece No.:	28575(04)	
			Highway No.:	COUNTY ROAD	
Designer:	MKEC ENGINEERING CONSULTANTS		Div. / County.:	03 / HUGHES	
Description:	GRADE, DRAIN, SURFACE, AND BRIDGE COUNTY ROAD (EW-126): FROM 3.0 MILES WEST OF US-75, EXTEND EAST NEAR HOLDENVILLE. PROJECT LENGTH = 2.879 MILES.				
Contract Amount:	\$3,220,801.19	Funds Available:	\$3,278,244.51	Funds Paid(%) :	89%
Change Order	6	Original Time Used:	255%	Revised Time Used:	141%

Change Order No. 6 approves an additional appropriation in the amount of \$8,273.20.

Site Requirement: This change provides payment for the additional construction traffic control required to provide direction to the traveling public during construction due to the extended duration of this project as a result of weather related delays. This change extends the contract time one-hundred and thirty days due to weather related delays experienced by the contractor during construction.

NEW ITEM

\$8,273.20

Construction Traffic Control (Additional 130 Days) 1.00 LS \$8,273.20 /LS \$8,273.20

CHANGE ORDER ACTIONS						
CHANGE ORDER NO.	(+) Overrun (-) Underrun Amount (\$)	%	Appropriated Amount (\$)	%	Supplemental Agreement Amount(\$)	%
1	\$30,898.56	0.96%	\$30,898.56	0.96%	\$1,950.00	0.06%
2	\$6,880.00	0.21%	\$6,880.00	0.21%	\$6,880.00	0.21%
3	\$11,391.56	0.35%	\$11,391.56	0.35%	\$0.00	0.00%
4	\$0.00	0.00%	\$0.00	0.00%	\$0.00	0.00%
5	\$0.00	0.00%	\$0.00	0.00%	\$0.00	0.00%
6	\$8,273.20	0.26%	\$8,273.20	0.26%	\$0.00	0.00%
TOTAL	\$57,443.32	1.78%	\$57,443.32	1.78%	\$8,830.00	0.27%

Change Orders with Cumulative Total of \$75,000 or Less (Information Only)

January 11, 2021 Commission Meeting

Project Number:	STP-233C(038)PM		CO APPROVAL:	Dec. 09, 2020	AGENDA ITEM
			Contract ID:	180356	8E
Contractor :	SEWELL BROS., INC.		Job Piece No.:	27919(04)	
			Highway No.:	SH-5	
Designer:	CHIANG, PATEL & YERBY, INC.		Div. / County.:	05 / JACKSON	
Description:	BRIDGE AND APPROACHES SH-5: OVER SANDY CREEK, 2.5 MILES WEST OF THE SH-6 JUNCTION NEAR ELDORADO. PROJECT LENGTH = 0.255 MILE				
Contract Amount:	\$2,405,161.72	Funds Available:	\$2,428,687.39	Funds Paid(%) :	95%
Change Order	4	Original Time Used:	93%	Revised Time Used:	93%

Change Order No. 4 approves a supplemental agreement and an additional appropriation in the amount of \$850.00.

Site Requirement: This change provides payment for the remobilization required to install additional solid slab sodding necessary to terminate the permit issued by the Department of Environmental Quality.

NEW ITEM	\$850.00
Mobilization (Remobilization) (Solid Slab Sodding)	1.00 LS \$850.00 /LS \$850.00

CHANGE ORDER ACTIONS						
CHANGE ORDER NO.	(+ Overrun (-) Underrun Amount (\$)	%	Appropriated Amount (\$)	%	Supplemental Agreement Amount(\$)	%
1	\$0.00	0.00%	\$0.00	0.00%	\$0.00	0.00%
2	\$0.00	0.00%	\$0.00	0.00%	\$0.00	0.00%
3	\$22,675.67	0.94%	\$22,675.67	0.94%	\$0.00	0.00%
4	\$850.00	0.04%	\$850.00	0.04%	\$850.00	0.04%
TOTAL	\$23,525.67	0.98%	\$23,525.67	0.98%	\$850.00	0.04%

Change Orders with Cumulative Total of \$75,000 or Less (Information Only)

January 11, 2021 Commission Meeting

Project Number:	TAP-236N(063)TP		CO APPROVAL:	Dec. 07, 2020	AGENDA ITEM 8F
			Contract ID:	200154	
Contractor :	DOWNEY CONTRACTING, LLC		Job Piece No.:	33000(04)	
			Highway No.:	CITY STREET	
Designer:	R.L. SHEARS COMPANY		Div. / County.:	04 / KAY	
Description:	PEDESTRIAN IMPROVEMENTS (SIDEWALKS) CITY STREET (MAIN STREET): FROM 0.1 MILES SOUTH OF US-60B (E NORTH AVENUE), EXTEND NORTH IN THE CITY OF TONKAWA. PROJECT LENGTH = 0.987 MILE				
Contract Amount:	\$758,115.30	Funds Available:	\$761,084.80	Funds Paid(%) :	78%
Change Order	1	Original Time Used:	103%	Revised Time Used:	103%

Change Order No. 1 approves a supplemental agreement and an additional appropriation in the amount of \$2,969.50.

Engineering: This change provides payment for the concrete pavement pay item required to reconstruct multiple crosswalks due to their existing condition being too deteriorated to meet ADA guidelines; and for the construction barricade pay item required to close local streets due to this item being inadvertently omitted from the plans. This change extends the contract time twenty-one days to complete this additional work.

NEW ITEMS			\$2,969.50
P. C. Concrete Pavement (Placement)	50.00 SY	\$54.00 /SY	\$2,700.00
Construction Barricades (Type III)	275.00 SD	\$0.98 /SD	\$269.50

CHANGE ORDER ACTIONS						
CHANGE ORDER NO.	(+) Overrun (-) Underrun Amount (\$)	%	Appropriated Amount (\$)	%	Supplemental Agreement Amount(\$)	%
1	\$2,969.50	0.39%	\$2,969.50	0.39%	\$2,969.50	0.39%
TOTAL	\$2,969.50	0.39%	\$2,969.50	0.39%	\$2,969.50	0.39%

Change Orders with Cumulative Total of \$75,000 or Less (Information Only)

January 11, 2021 Commission Meeting

Project Number:	STP-236B(062)UR		CO APPROVAL:	Nov. 16, 2020	AGENDA ITEM
			Contract ID:	190198	8G
Contractor :	EVANS & ASSOCIATES CONSTRUCTION CO., INC.		Job Piece No.:	33687(04)	
			Highway No.:	CITY STREET (WEST HI	
Designer:	CABBINESS ENGINEERING, LLC.		Div. / County.:	04 / KAY	
Description:	GRADE, SURFACE, WATER LINE, AND EROSION CONTROL CITY STREET (WEST HIGHLAND AVENUE): FROM 1.8 MILES WEST OF THE US-77 JUNCTION, EXTEND EAST IN PONCA CITY. PROJECT LENGTH = 0.288 MILE				
Contract Amount:	\$1,465,586.78	Funds Available:	\$1,480,884.13	Funds Paid(%) :	42%
Change Order	3	Original Time Used:	51%	Revised Time Used:	58%

Change Order No. 3 approves a supplemental agreement and an additional appropriation in the amount of \$5,280.00.

Engineering: This change provides payment for the meter box adjustment pay item required to complete the project as specified due to this item being inadvertently omitted from the plans; and for the overrun of the concrete driveway pay item required to reconstruct more of the driveways than planned due to drainage issues. This change alters the method of measurement for the concrete driveway pay item from plan quantity to measured. This change extends the contract time four days to complete the additional driveway work.

NEW ITEM			\$3,000.00
Meter Boxes Adjust to Grade	15.00 EA	\$200.00 /EA	\$3,000.00
OVERRUN ITEM			\$2,280.00
6" Concrete Driveway (H.E.S.)	30.00 SY	\$76.00 /SY	\$2,280.00

CHANGE ORDER ACTIONS						
CHANGE ORDER NO.	(+) Overrun (-) Underrun Amount (\$)	%	Appropriated Amount (\$)	%	Supplemental Agreement Amount(\$)	%
1	\$0.00	0.00%	\$0.00	0.00%	\$0.00	0.00%
2	\$10,017.35	0.68%	\$10,017.35	0.68%	\$10,017.35	0.68%
3	\$5,280.00	0.36%	\$5,280.00	0.36%	\$3,000.00	0.20%
TOTAL	\$15,297.35	1.04%	\$15,297.35	1.04%	\$13,017.35	0.89%

Change Orders with Cumulative Total of \$75,000 or Less (Information Only)
January 11, 2021 Commission Meeting

Project Number:	STP-237B(049)PM		CO APPROVAL:	Nov. 23, 2020	AGENDA ITEM
			Contract ID:	190177	
Contractor :	SCHIRALLI CONSTRUCTION CORP.		Job Piece No.:	30445(04)	8H
			Highway No.:	US-81/SH-33	
Designer:	OKLA. DEPT. OF TRANSPORTATION		Div. / County.:	04 / KINGFISHER	
Description:	PAVEMENT REHABILITATION (P. C. CONCRETE) US-81/SH-33: US-81, FROM SHERIDAN AVENUE EXTEND NORTH. SH-33, FROM US-81, EXTEND EAST IN THE CITY OF KINGFISHER. PROJECT LENGTH = 0.450 MILE				
Contract Amount:	\$1,249,805.98	Funds Available:	\$1,299,805.98	Funds Paid(%) :	81%
Change Order	4	Original Time Used:	128%	Revised Time Used:	95%

Change Order No. 4 approves an additional appropriation in the amount of \$50,000.00.

Site Requirement: This change provides payment for the early completion incentive earned by the contractor for achieving substantial completion on that portion of the project requiring the closure of SH-33 for pavement rehabilitation prior to the time allowed in the contract. This change extends the milestone time five days due to weather related delays caused by a major ice storm in accordance with the Governor's Emergency Declaration EO 2020-33.

NEW ITEM \$50,000.00
 Incentive for Early Completion (SH-33 Milestone) 10.00 DAY \$5,000.00 /DAY \$50,000.00

CHANGE ORDER ACTIONS						
CHANGE ORDER NO.	(+) Overrun (-) Underrun Amount (\$)	%	Appropriated Amount (\$)	%	Supplemental Agreement Amount(\$)	%
1	\$0.00	0.00%	\$0.00	0.00%	\$0.00	0.00%
2	\$0.00	0.00%	\$0.00	0.00%	\$0.00	0.00%
3	\$0.00	0.00%	\$0.00	0.00%	\$0.00	0.00%
4	\$50,000.00	4.00%	\$50,000.00	4.00%	\$0.00	0.00%
TOTAL	\$50,000.00	4.00%	\$50,000.00	4.00%	\$0.00	0.00%

Change Orders with Cumulative Total of \$75,000 or Less (Information Only)

January 11, 2021 Commission Meeting

Project Number:	STP-241C(059)PM		CO APPROVAL:	Dec. 09, 2020	AGENDA ITEM 8I
			Contract ID:	200229	
Contractor :	L & N BRIDGE, LLC		Job Piece No.:	28034(04)	
			Highway No.:	SH-66B	
Designer:	ATKINS		Div. / County.:	03 / LINCOLN	
Description:	BRIDGE AND APPROACHES SH-66B:OVER CAPTAIN CREEK, 1.6 MILES NORTHEAST OF THE SH-66 JUNCTION IN WELLSTON. PROJECT LENGTH = 0.352 MILE				
Contract Amount:	\$2,372,504.03	Funds Available:	\$2,399,248.43	Funds Paid(%) :	19%
Change Order	1	Original Time Used:	42%	Revised Time Used:	42%

Change Order No. 1 approves a supplemental agreement and an additional appropriation in the amount of \$26,744.40.

Site Requirement: This change provides payment for the removal of concrete pavement pay item required to remove the existing concrete pavement discovered after the removal of the asphalt surface. This change extends the contract time eight days to complete this additional work.

NEW ITEM		\$26,744.40
Removal of Concrete Pavement	4,370.00 SY	\$6.12 /SY
		\$26,744.40

CHANGE ORDER ACTIONS						
CHANGE ORDER NO.	(+) Overrun (-) Underrun Amount (\$)	%	Appropriated Amount (\$)	%	Supplemental Agreement Amount(\$)	%
1	\$26,744.40	1.13%	\$26,744.40	1.13%	\$26,744.40	1.13%
TOTAL	\$26,744.40	1.13%	\$26,744.40	1.13%	\$26,744.40	1.13%

Change Orders with Cumulative Total of \$75,000 or Less (Information Only)
January 11, 2021 Commission Meeting

Project Number:	SSR-242C(083)SR	CO APPROVAL:	Nov. 16, 2020	AGENDA ITEM
		Contract ID:	200071	8J
Contractor :	T.J. CAMPBELL CONSTRUCTION COMPANY	Job Piece No.:	33810(04)	
		Highway No.:	SH-74	
Designer:	OKLA. DEPT. OF TRANSPORTATION	Div. / County.:	04 / LOGAN	
Description:	PAVEMENT REHABILITATION (ASPHALT) SH-74: FROM 1.28 MILES NORTH OF THE SH-74F JUNCTION, EXTEND NORTH NEAR CEDAR VALLEY. PROJECT LENGTH = 3.780 MILES			
Contract Amount:	\$1,344,425.00	Funds Available:	\$1,354,603.58	Funds Paid(%) : 99%
Change Order	3	Original Time Used:	58%	Revised Time Used: 58%

Change Order No. 3 approves a supplemental agreement and an additional appropriation in the amount of \$10,178.58.

Site Requirement: This change provides payment for the unclassified backfill pay item due to an administrative error made on Change Order No. 2, the original final quantity change order, which underran the quantity to zero.

OVERRUN OF PREVIOUSLY ESTABLISHED C/O ITEM	\$10,178.58
Unclassified Backfill	1,000.00 CY \$10.18 /CY \$10,178.58

CHANGE ORDER ACTIONS						
CHANGE ORDER NO.	(+) Overrun (-) Underrun Amount (\$)	%	Appropriated Amount (\$)	%	Supplemental Agreement Amount(\$)	%
1	-\$4,821.42	-0.36%	\$0.00	0.00%	\$0.00	0.00%
2	-\$2,947.57	-0.22%	\$0.00	0.00%	\$0.00	0.00%
3	\$10,178.58	0.76%	\$10,178.58	0.76%	\$10,178.58	0.76%
TOTAL	\$2,409.59	0.18%	\$10,178.58	0.76%	\$10,178.58	0.76%

Change Orders with Cumulative Total of \$75,000 or Less (Information Only)

January 11, 2021 Commission Meeting

Project Number:	HSIPIG-3500-(014)IT	CO APPROVAL:	Nov. 30, 2020	AGENDA ITEM
		Contract ID:	170286	8K
Contractor :	MIDSTATE TRAFFIC CONTROL, INC.	Job Piece No.:	31603(04)	
		Highway No.:	I-35	
Designer:	OKLA. DEPT. OF TRANSPORTATION	Div. / County.:	07 / LOVE	
Description:	SAFETY IMPROVEMENT (ITS) I-35: AT MULTIPLE LOCATIONS IN DIVISION III, IV AND VII.			
Contract Amount:	\$628,819.00	Funds Available:	\$657,213.15	Funds Paid(%) : 96%
Change Order	2	Original Time Used:	243%	Revised Time Used: 92%

Change Order No. 2 approves a supplemental agreement and an additional appropriation in the amount of \$28,394.15.

Site Requirement: This change provides payment for the additional mobilization and additional work required to repair damage caused by rodents during a supplier delay of the REECE units.

NEW ITEM	\$28,394.15
Construction Miscellaneous (Damage Repair & Mobilization)	1.00 LSUM \$28,394.15 /LSUM \$28,394.15

CHANGE ORDER ACTIONS						
CHANGE ORDER NO.	(+ Overrun (-) Underrun Amount (\$)	%	Appropriated Amount (\$)	%	Supplemental Agreement Amount(\$)	%
1	\$0.00	0.00%	\$0.00	0.00%	\$0.00	0.00%
2	\$28,394.15	4.52%	\$28,394.15	4.52%	\$28,394.15	4.52%
TOTAL	\$28,394.15	4.52%	\$28,394.15	4.52%	\$28,394.15	4.52%

Change Orders with Cumulative Total of \$75,000 or Less (Information Only)
January 11, 2021 Commission Meeting

Project Number:	STP-248D(044)CI		CO APPROVAL:	Nov. 24, 2020	AGENDA ITEM
			Contract ID:	190181	8L
Contractor :	HUB CONSTRUCTION, INC.		Job Piece No.:	29305(04)	
			Highway No.:	COUNTY ROAD (TYLER R	
Designer:	EST		Div. / County.:	02 / MARSHALL	
Description:	BRIDGE AND APPROACHES COUNTY ROAD (TYLER ROAD): OVER TRIBUTARY OF LITTLE HAUANI CREEK, 1.5 MILES NORTH OF THE US-70 JUNCTION NEAR MCMILLAN. PROJECT LENGTH = 0.209 MILE				
Contract Amount:	\$660,534.20	Funds Available:	\$687,369.66	Funds Paid(%) :	80%
Change Order	2	Original Time Used:	126%	Revised Time Used:	123%

Change Order No. 2 approves a supplemental agreement resulting in an underrun to the contract in the amount of \$110,972.91.

Engineering: This change documents the underrun of the unclassified excavation and borrow pay items due to the planned quantities being overestimated. This change provides for the unrecoverable expenses and lost overhead incurred by the contractor due to the significant underrun of the unclassified borrow pay item.

NEW ITEM			\$7,617.40
Unclassified Borrow (Lost Overhead)	8,018.32 CY	\$0.95 /CY	\$7,617.40
UNDERRUN ITEMS			-\$118,590.32
Unclassified Excavation	-4,990.15 CY	\$8.50 /CY	-\$42,416.28
Unclassified Borrow	-8,018.32 CY	\$9.50 /CY	-\$76,174.04

CHANGE ORDER ACTIONS						
CHANGE ORDER NO.	(+) Overrun (-) Underrun Amount (\$)	%	Appropriated Amount (\$)	%	Supplemental Agreement Amount(\$)	%
1	\$5,947.50	0.90%	\$5,947.50	0.90%	\$5,947.50	0.90%
2	-\$110,972.91	-16.80%	\$0.00	0.00%	\$0.00	0.00%
TOTAL	-\$105,025.41	-15.90%	\$5,947.50	0.90%	\$5,947.50	0.90%

Change Orders with Cumulative Total of \$75,000 or Less (Information Only)

January 11, 2021 Commission Meeting

Project Number:	SBR-3500(080)SB		CO APPROVAL:	Nov. 20, 2020	AGENDA ITEM
			Contract ID:	190217	
Contractor :	C3 CONSTRUCTION, INC.		Job Piece No.:	31309(04)	8M
			Highway No.:	SH-7 WB	
Designer:	TETRA TECH		Div. / County.:	07 / MURRAY	
Description:	BRIDGE REHABILITATION SH-7 WB: OVER I-35, 2.8 MILES WEST OF THE US-77 JUNCTION NEAR DAVIS. PROJECT LENGTH = 0.115 MILE				
Contract Amount:	\$2,077,716.75	Funds Available:	\$2,104,981.14	Funds Paid(%) :	95%
Change Order	4	Original Time Used:	107%	Revised Time Used:	101%

Change Order No. 4 approves a supplemental agreement and an additional appropriation in the amount of \$330.00.

Site Requirement: This change provides payment for the mobilization pay item required to compensate the contractor to mobilize to the project site and weld beams that were previously floating but have now settled.

NEW ITEM			\$330.00
Mobilization (Additional) (Beam Welding)	1.00	LSUM	\$330.00 /LSUM \$330.00

CHANGE ORDER ACTIONS						
CHANGE ORDER NO.	(+) Overrun (-) Underrun Amount (\$)	%	Appropriated Amount (\$)	%	Supplemental Agreement Amount(\$)	%
1	\$9,265.24	0.45%	\$9,265.24	0.45%	\$4,541.04	0.22%
2	\$6,305.85	0.30%	\$6,305.85	0.30%	\$6,305.85	0.30%
3	\$5,137.00	0.25%	\$5,137.00	0.25%	\$5,137.00	0.25%
4	\$330.00	0.02%	\$330.00	0.02%	\$330.00	0.02%
TOTAL	\$21,038.09	1.01%	\$21,038.09	1.01%	\$16,313.89	0.79%

Change Orders with Cumulative Total of \$75,000 or Less (Information Only)
January 11, 2021 Commission Meeting

Project Number:	SBR-251C(096)SB		CO APPROVAL:	Dec. 07, 2020	AGENDA ITEM
			Contract ID:	200159	
Contractor :	PARADIGM CONSTRUCTION & ENGINEERING, INC		Job Piece No.:	32723(04)	8N
			Highway No.:	SH-72	
Designer:	CHIANG, PATEL & YERBY, INC.		Div. / County.:	01 / MUSKOGEE	
Description:	BRIDGE REHABILITATION SH-72: OVER COAL CREEK, 1.3 MILES NORTH OF THE US-64 JUNCTION NEAR HASKELL. PROJECT LENGTH = 0.160 MILE				
Contract Amount:	\$1,780,880.63	Funds Available:	\$1,792,129.35	Funds Paid(%) :	47%
Change Order	1	Original Time Used:	41%	Revised Time Used:	41%

Change Order No. 1 approves a supplemental agreement and an additional appropriation in the amount of \$11,248.72.

Engineering: This change provides payment for the removal of asphalt pavement pay item required to remove the existing shoulders and guardrail widening due to this work being inadvertently omitted from the plans.

NEW ITEM			\$11,248.72
Removal of Asphalt Pavement	450.67 SY	\$24.96 /SY	\$11,248.72

CHANGE ORDER ACTIONS						
CHANGE ORDER NO.	(+) Overrun (-) Underrun Amount (\$)	%	Appropriated Amount (\$)	%	Supplemental Agreement Amount(\$)	%
1	\$11,248.72	0.63%	\$11,248.72	0.63%	\$11,248.72	0.63%
TOTAL	\$11,248.72	0.63%	\$11,248.72	0.63%	\$11,248.72	0.63%

Change Orders with Cumulative Total of \$75,000 or Less (Information Only)

January 11, 2021 Commission Meeting

Project Number:	SSR-251N(099)SR		CO APPROVAL:	Nov. 18, 2020	AGENDA ITEM
			Contract ID:	200074	80
Contractor :	APAC-CENTRAL, INC.		Job Piece No.:	32787(04)	
			Highway No.:	SH-165	
Designer:	OKLA. DEPT. OF TRANSPORTATION		Div. / County.:	01 / MUSKOGEE	
Description:	RESURFACE (ASPHALT) SH-165: FROM US-64, EXTEND EAST IN MUSKOGEE. PROJECT LENGTH = 1.524 MILES				
Contract Amount:	\$867,105.04	Funds Available:	\$867,105.04	Funds Paid(%):	95%
Change Order	1	Original Time Used:	153%	Revised Time Used:	153%

Change Order No. 1 approves a supplemental agreement resulting in an underrun to the contract in the amount of \$5.50.

Site Requirement: This change provides for the mobilization pay item required to compensate the contractor for mobilizing to the project to replace the loop detector wires due to the assumption they would be damaged during cold milling operations. This change documents the partial underrun of the loop detector wire pay item due to discovering during construction that the wires were not damaged during cold milling and could remain in place.

NEW ITEM			\$1,281.50
Mobilization (Loop Detectors)	1.00 LS	\$1,281.50 /LS	\$1,281.50
UNDERRUN ITEM			-\$1,287.00
Loop Detector Wire	-130.00 LF	\$9.90 /LF	-\$1,287.00

CHANGE ORDER ACTIONS						
CHANGE ORDER NO.	(+ Overrun - Underrun Amount (\$))	%	Appropriated Amount (\$)	%	Supplemental Agreement Amount(\$)	%
1	-\$5.50	0.00%	\$0.00	0.00%	\$0.00	0.00%
TOTAL	-\$5.50	0.00%	\$0.00	0.00%	\$0.00	0.00%

Change Orders with Cumulative Total of \$75,000 or Less (Information Only)

January 11, 2021 Commission Meeting

Project Number:	NHPPI-4400-(037)PM / NHPPI-4400-(039)PM /		CO APPROVAL:	Nov. 20, 2020	AGENDA ITEM
	NHPPI-4400-(040)PM / NHPPI-4400-(041)PM /		Contract ID:	190120	8P
	NHPPI-4400-(042)PM / NHPPI-4400-(043)PM		Job Piece No.:	31006(04)	
Contractor :	SHERWOOD CONSTRUCTION CO., INC.		Highway No.:	I-44	
Designer:	OKLA. DEPT. OF TRANSPORTATION		Div. / County.:	04 / OKLAHOMA	
Description:	PAVEMENT REHABILITATION (P.C.) AND BRIDGE REHABILITATION I-44: FROM 0.3 MILES SOUTH OF THE I-240 INTERCHANGE, EXTEND NORTH IN OKLAHOMA CITY. PROJECT LENGTH = 5.785 MILES				
Contract Amount:	\$27,487,533.01	Funds Available:	\$27,526,429.42	Funds Paid(%) :	7%
Change Order	1	Original Time Used:	14%	Revised Time Used:	14%

Change Order No. 1 approves a supplemental agreement and an additional appropriation in the amount of \$38,896.41.

Site Requirement: This change provides payment for the additional work required to replace the eastern abutment of the 29th Street Bridge in lieu of hydroblasting and overlaying as planned due to it being more deteriorated than expected; for the overrun of the concrete dividing strip pay item required to repair the dividing strips on the 29th Street Bridge as specified due to them being more deteriorated than planned; for the painted traffic stripe pay item required to provide temporary delineation during construction; for the structural steel pay item required to repair a girder on the eastbound I-44 Bridge over Independence Avenue; and for the additional work required to adjust the timings of the traffic signals at the intersections of SW 59th Street and the I-44 on and off ramps.

NEW ITEMS			\$57,269.87
Construction Miscellaneous (Signal Timing Adjustment)	2.00 EA	\$750.00 /EA	\$1,500.00
Removal of Bridge Item (Type B)	1.00 LSUM	\$6,768.20 /LSUM	\$6,768.20
Epoxy Coated Reinforcing Steel	202.19 LB	\$1.38 /LB	\$279.02
Approach Slab	205.56 SY	\$170.14 /SY	\$34,973.98
Construction Traff. Str. (Paint) (4" Wide)	30,000.00 LF	\$0.20 /LF	\$6,000.00
Structural Steel	139.00 LB	\$19.63 /LB	\$2,728.57
Substructure Excavation Common	85.00 CY	\$59.06 /CY	\$5,020.10
OVERRUN ITEM			\$10,439.88
6" Concrete Dividing Strip	52.78 SY	\$197.80 /SY	\$10,439.88
UNDERRUN ITEMS			-\$28,813.34
Bridge Deck Concrete Overlay	-205.56 SY	\$88.52 /SY	-\$18,196.17
Hydrodemolition	-205.56 SY	\$51.65 /SY	-\$10,617.17

CHANGE ORDER ACTIONS						
CHANGE ORDER NO.	(+) Overrun (-) Underrun Amount (\$)	%	Appropriated Amount (\$)	%	Supplemental Agreement Amount(\$)	%
1	\$38,896.41	0.14%	\$38,896.41	0.14%	\$38,896.41	0.14%
2	\$0.00	0.00%	\$0.00	0.00%	\$0.00	0.00%
3	\$50,000.00	0.18%	\$50,000.00	0.18%	\$0.00	0.00%
TOTAL	\$88,896.41	0.32%	\$88,896.41	0.32%	\$38,896.41	0.14%

Change Orders with Cumulative Total of \$75,000 or Less (Information Only)

January 11, 2021 Commission Meeting

Project Number:	STP-257C(071)3P	CO APPROVAL:	Dec. 07, 2020	AGENDA ITEM
		Contract ID:	190129	8Q
Contractor :	BECCO CONTRACTORS, INC.	Job Piece No.:	31942(04)	
		Highway No.:	SH-123	
Designer:	OKLA. DEPT. OF TRANSPORTATION	Div. / County.:	08 / OSAGE	
Description:	RESURFACE (ASPHALT) SH-123: FROM 5.2 MILES SOUTH OF THE US-60 (ADAMS BOULEVARD) JUNCTION, EXTEND NORTH IN BARTLESVILLE. PROJECT LENGTH = 5.25 MILES			
Contract Amount:	\$1,623,000.00	Funds Available:	\$1,628,500.00	Funds Paid(%) : 83%
Change Order	2	Original Time Used:	449%	Revised Time Used: 449%

Change Order No. 2 approves a supplemental agreement and an additional appropriation in the amount of \$5,500.00.

Engineering: This change provides payment for the additional work required to replace the loop detectors at the intersection of Adams Road and SH-123 due to the existing loops being removed during the cold milling operations with no provision made in the contract for their replacement.

NEW ITEM	\$5,500.00
Vehicle Loop Detector	2.00 EA \$2,750.00 /EA \$5,500.00

CHANGE ORDER ACTIONS						
CHANGE ORDER NO.	(+) Overrun (-) Underrun Amount (\$)	%	Appropriated Amount (\$)	%	Supplemental Agreement Amount(\$)	%
1	\$0.00	0.00%	\$0.00	0.00%	\$0.00	0.00%
2	\$5,500.00	0.34%	\$5,500.00	0.34%	\$5,500.00	0.34%
TOTAL	\$5,500.00	0.34%	\$5,500.00	0.34%	\$5,500.00	0.34%

Change Orders with Cumulative Total of \$75,000 or Less (Information Only)

January 11, 2021 Commission Meeting

Project Number:	STP-258C(065)PM		CO APPROVAL:	Dec. 01, 2020	AGENDA ITEM 8R
			Contract ID:	200022	
Contractor :	APAC-CENTRAL, INC.		Job Piece No.:	27016(04)	
			Highway No.:	SH-125	
Designer:	OLSSON ASSOCIATES		Div. / County.:	08 / OTTAWA	
Description:	WIDEN AND RESURFACE SH-125: FROM THE US-60 JUNCTION, EXTEND NORTH IN FAIRLAND. PROJECT LENGTH = 1.657 MILES				
Contract Amount:	\$2,697,500.00	Funds Available:	\$2,749,537.48	Funds Paid(%):	10%
Change Order	1	Original Time Used:	20%	Revised Time Used:	20%

Change Order No. 1 approves a supplemental agreement and an additional appropriation in the amount of \$52,037.48.

Engineering: This change provides payment for the separator fabric pay items required to complete the project as specified due to quantities in the plans being miscalculated.

NEW ITEMS			\$52,037.48
Separator Fabric (Typical #3)	20,702.00 SY	\$2.44 /SY	\$50,512.88
Separator Fabric (15oz/SY) (Typical #1)	210.00 SY	\$7.26 /SY	\$1,524.60

CHANGE ORDER ACTIONS						
CHANGE ORDER NO.	(+ Overrun (-) Underrun Amount (\$)	%	Appropriated Amount (\$)	%	Supplemental Agreement Amount(\$)	%
1	\$52,037.48	1.93%	\$52,037.48	1.93%	\$52,037.48	1.93%
TOTAL	\$52,037.48	1.93%	\$52,037.48	1.93%	\$52,037.48	1.93%

Change Orders with Cumulative Total of \$75,000 or Less (Information Only)

January 11, 2021 Commission Meeting

Project Number:	E-SAP-3500(088)ES		CO APPROVAL:	Nov. 19, 2020	AGENDA ITEM 8S
			Contract ID:	190392	
Contractor :	MANHATTAN ROAD & BRIDGE COMPANY		Job Piece No.:	34596(04)	
			Highway No.:	I-35	
Designer:	OKLA. DEPT. OF TRANSPORTATION		Div. / County.:	04 / PAYNE	
Description:	BRIDGE REPAIR I-35: REPAIR VEHICLE IMPACT DAMAGE OVER SH-51, 11.2 MILES SOUTH OF US-77 NEAR STILLWATER. PROJECT LENGTH = 0.00 MILE				
Contract Amount:	\$643,850.00	Funds Available:	\$706,553.85	Funds Paid(%) :	95%
Change Order	5	Original Time Used:	59%	Revised Time Used:	59%

Change Order No. 5 approves a supplemental agreement and an additional appropriation in the amount of \$6,819.84.

Engineering: This change provides payment for the 4-inch multi-polymer traffic stripe pay item required to complete the project as specified due to this item being inadvertently omitted from the plans.

NEW ITEM	\$6,819.84
Traffic Stripe (Multi-Poly.)(4" Wide)	1,536.00 LF \$4.44 /LF \$6,819.84

CHANGE ORDER ACTIONS						
CHANGE ORDER NO.	(+) Overrun (-) Underrun Amount (\$)	%	Appropriated Amount (\$)	%	Supplemental Agreement Amount(\$)	%
1	\$28,344.27	4.40%	\$28,344.27	4.40%	\$28,344.27	4.40%
2	\$11,131.74	1.73%	\$11,131.74	1.73%	\$11,131.74	1.73%
3	\$16,408.00	2.55%	\$16,408.00	2.55%	\$0.00	0.00%
5	\$6,819.84	1.06%	\$6,819.84	1.06%	\$6,819.84	1.06%
TOTAL	\$62,703.85	9.74%	\$62,703.85	9.74%	\$46,295.85	7.19%

Change Orders with Cumulative Total of \$75,000 or Less (Information Only)
January 11, 2021 Commission Meeting

Project Number:	STP-261D(083)CI		CO APPROVAL:	Nov. 24, 2020	AGENDA ITEM 8T
			Contract ID:	190090	
Contractor :	HUB CONSTRUCTION, INC.		Job Piece No.:	29996(04)	
			Highway No.:	COUNTY ROAD	
Designer:	CED #3		Div. / County:	02 / PITTSBURG	
Description:	BRIDGE AND APPROACHES COUNTY ROAD (CABINISS ROAD): OVER BIG WILDHORSE CREEK, 0.6 MILES NORTH OF THE US-270 JUNCTION NEAR CABINISS. PROJECT LENGTH = 0.189 MILE				
Contract Amount:	\$752,310.64	Funds Available:	\$761,743.63	Funds Paid(%) :	92%
Change Order	2	Original Time Used:	167%	Revised Time Used:	116%

Change Order No. 2 approves an additional appropriation in the amount of \$9,432.99.

Site Requirement: This change provides payment for the final estimate due to the overrun of the solid slab sodding pay item. Additional quantities of this item were required to provide adequate permanent erosion control on the area of the existing roadbed due to this quantity being inadvertently omitted from the plans.

The cost of this change is partially offset by the underrun of other items of work.

OVERRUN ITEM	\$11,380.53
Solid Slab Sodding	3,793.51 SY \$3.00 /SY \$11,380.53

CHANGE ORDER ACTIONS						
CHANGE ORDER NO.	(+) Overrun (-) Underrun Amount (\$)	%	Appropriated Amount (\$)	%	Supplemental Agreement Amount(\$)	%
1	\$0.00	0.00%	\$0.00	0.00%	\$0.00	0.00%
2	\$9,432.99	1.25%	\$9,432.99	1.25%	\$0.00	0.00%
TOTAL	\$9,432.99	1.25%	\$9,432.99	1.25%	\$0.00	0.00%

Change Orders with Cumulative Total of \$75,000 or Less (Information Only)
January 11, 2021 Commission Meeting

Project Number:	SSP-262B(041)SS		CO APPROVAL:	Dec. 09, 2020	AGENDA ITEM
			Contract ID:	200210	
Contractor :	B & B CONSTRUCTION SERVICE J.T., INC.		Job Piece No.:	23285(08)	8U
			Highway No.:	MULTIPLE LOCATIONS	
Designer:	OKLA. DEPT. OF TRANSPORTATION		Div. / County.:	03 / PONTOTOC	
Description:	JOINT SEAL/REPAIR AT MULTIPLE LOCATIONS IN DIVISION III. PROJECT LENGTH = 0.00 MILE				
Contract Amount:	\$293,129.20	Funds Available:	\$293,798.00	Funds Paid(%) :	70%
Change Order	1	Original Time Used:	67%	Revised Time Used:	67%

Change Order No. 1 approves a supplemental agreement and an additional appropriation in the amount of \$668.80.

Engineering: This change provides payment for the silicone construction joint pay item required to seal the existing construction joints on Bridge C due to this work being inadvertently omitted from the plans and proposal.

NEW ITEM			\$668.80
Silicone Construction Joint	30.40 LF	\$22.00 /LF	\$668.80

CHANGE ORDER ACTIONS						
CHANGE ORDER NO.	(+) Overrun (-) Underrun Amount (\$)	%	Appropriated Amount (\$)	%	Supplemental Agreement Amount(\$)	%
1	\$668.80	0.23%	\$668.80	0.23%	\$668.80	0.23%
TOTAL	\$668.80	0.23%	\$668.80	0.23%	\$668.80	0.23%

Change Orders with Cumulative Total of \$75,000 or Less (Information Only)
January 11, 2021 Commission Meeting

Project Number:	STP-162B(207)SS		CO APPROVAL:	Nov. 13, 2020	AGENDA ITEM
			Contract ID:	190132	
Contractor :	OVERLAND CORPORATION		Job Piece No.:	23286(10)	8V
			Highway No.:	SH-99	
Designer:	OKLA. DEPT. OF TRANSPORTATION		Div. / County.:	03 / PONTOTOC	
Description:	WIDEN AND RESURFACE (ASPHALT) SH-99: FROM 2.6 MILES SOUTH OF THE SH-3 JUNCTION, EXTEND NORTH NEAR ADA. PROJECT LENGTH = 2.452 MILES				
Contract Amount:	\$6,126,960.99	Funds Available:	\$6,146,519.66	Funds Paid(%) :	31%
Change Order	1	Original Time Used:	93%	Revised Time Used:	93%

Change Order No. 1 approves a supplemental agreement and an additional appropriation in the amount of \$19,558.67.

Site Requirement: This change provides payment for the overrun of the structural excavation, Class AA concrete, and reinforcing steel pay items required to extend an existing drainage structure in lieu of constructing Structure No. 8 as planned due to the ease of construction and cost savings to the contract. This change extends the contract time one hundred and thirty-eight days (ninety-five for weather related delays and forty-three for Winter Time Suspension).

OVERRUN ITEMS				\$19,558.67
Class AA Concrete	31.88 CY	\$446.80 /CY		\$14,243.98
Structural Excavation Unclassified	8.97 CY	\$20.10 /CY		\$180.30
Reinforcing Steel	4,464.69 LB	\$1.15 /LB		\$5,134.39

CHANGE ORDER ACTIONS						
CHANGE ORDER NO.	(+) Overrun (-) Underrun Amount (\$)	%	Appropriated Amount (\$)	%	Supplemental Agreement Amount(\$)	%
1	\$19,558.67	0.32%	\$19,558.67	0.32%	\$0.00	0.00%
TOTAL	\$19,558.67	0.32%	\$19,558.67	0.32%	\$0.00	0.00%

Change Orders with Cumulative Total of \$75,000 or Less (Information Only)
January 11, 2021 Commission Meeting

Project Number:	MC-268C(070)	CO APPROVAL:	Nov. 24, 2020	AGENDA ITEM	
		Contract ID:	200184		
Contractor :	SCODELLER CONSTRUCTION, INC.	Job Piece No.:	34713(04)	8W	
		Highway No.:	1-40		
Designer:	OKLA. DEPT. OF TRANSPORTATION	Div. / County.:	01 / SEQUOYAH		
Description:	CONCRETE PAVEMENT JOINT SEAL I-40: FROM THE US-64 JUNCTION, EXTEND NORTHEAST NEAR ROLAND. PROJECT LENGTH = 6.000 MILES				
Contract Amount:	\$685,220.00	Funds Available:	\$717,018.00	Funds Paid(%):	96%
Change Order	1	Original Time Used:	78%	Revised Time Used:	78%

Change Order No. 1 approves an additional appropriation in the amount of \$31,798.00.

Scope: This change provides payment for the overrun of the concrete joint sealing pay item required to repair more areas of the project than planned due to a request by the Department.

OVERRUN ITEM	\$31,798.00
Concrete Joint Sealing	15,899.00 LF \$2.00 /LF \$31,798.00

CHANGE ORDER ACTIONS						
CHANGE ORDER NO.	(+) Overrun (-) Underrun Amount (\$)	%	Appropriated Amount (\$)	%	Supplemental Agreement Amount(\$)	%
1	\$31,798.00	4.64%	\$31,798.00	4.64%	\$0.00	0.00%
TOTAL	\$31,798.00	4.64%	\$31,798.00	4.64%	\$0.00	0.00%

Change Orders with Cumulative Total of \$75,000 or Less (Information Only)

January 11, 2021 Commission Meeting

Project Number:	ACNHPP-2440-(017)FP		CO APPROVAL:	Dec. 09, 2020	AGENDA ITEM
			Contract ID:	180148	
Contractor :	SHERWOOD CONSTRUCTION CO., INC.		Job Piece No.:	28859(04)	8X
			Highway No.:	CITY STREET	
Designer:	CRAIG & KEITHLINE, INC.		Div. / County:	08 / TULSA	
Description:	BRIDGE AND APPROACHES CITY STREET (129TH E AVENUE): OVER I-244, 0.5 MILES NORTH OF I-44 IN TULSA. PROJECT LENGTH = 0.282 MILE				
Contract Amount:	\$5,224,452.68	Funds Available:	\$5,268,241.91	Funds Paid(%) :	98%
Change Order	5	Original Time Used:	123%	Revised Time Used:	100%

Change Order No. 5 approves an additional appropriation in the amount of \$37,673.23.

Site Requirement: This change provides payment for the final estimate due to the overrun of the construction sign pay item. Additional quantities of this item were required to provide direction to the traveling public during construction and to ensure adequate delineation throughout the project.

The cost of this change is partially offset by the underrun of other items of work.

OVERRUN ITEM	\$43,319.93
Construction Signs 0 to 6.25 SF	18,917.00 SD \$2.29 /SD \$43,319.93

CHANGE ORDER ACTIONS						
CHANGE ORDER NO.	(+ Overrun - Underrun Amount (\$))	%	Appropriated Amount (\$)	%	Supplemental Agreement Amount(\$)	%
1	\$0.00	0.00%	\$0.00	0.00%	\$0.00	0.00%
2	\$0.00	0.00%	\$0.00	0.00%	\$0.00	0.00%
4	\$6,116.00	0.12%	\$6,116.00	0.12%	\$6,116.00	0.12%
5	\$37,673.23	0.72%	\$37,673.23	0.72%	\$0.00	0.00%
TOTAL	\$43,789.23	0.84%	\$43,789.23	0.84%	\$6,116.00	0.12%

Change Orders with Cumulative Total of \$75,000 or Less (Information Only)

January 11, 2021 Commission Meeting

Project Number:	STP-272B(277)IG	CO APPROVAL:	Dec. 09, 2020	AGENDA ITEM
		Contract ID:	190389	8Y
Contractor :	CROSSLAND HEAVY CONTRACTORS INC.	Job Piece No.:	29326(04)	
		Highway No.:	CITY STREET	
Designer:	POE & ASSOCIATES, INC.	Div. / County.:	08 / TULSA	
Description:	GRADE, DRAIN,SURFACE, AND BRIDGE CITY STREET (EAST 76TH STREET NORTH): FROM 0.1 MILES EAST OF THE US-169 INTERSECTION, EXTENDED EAST IN OWASSO. PROJECT LENGTH 0.844 MILE			
Contract Amount:	\$8,445,000.00	Funds Available:	\$8,501,493.45	Funds Paid(%) : 72%
Change Order	4	Original Time Used:	65%	Revised Time Used: 65%

Change Order No. 4 approves a supplemental agreement and an additional appropriation in the amount of \$39,816.26.

Site Requirement: This change provides payment for the temporary earth retainage pay item required to provide shoring along the additional length of Retaining Wall D due to a request by the City of Owasso. Funding for this item will be non-participating in nature.

NEW ITEM (NON-PARTICIPATING)			\$39,816.26
Temporary Earth Retainage	1.00	LSUM	\$39,816.26 /LSUM
			\$39,816.26

CHANGE ORDER ACTIONS						
CHANGE ORDER NO.	(+) Overrun (-) Underrun Amount (\$)	%	Appropriated Amount (\$)	%	Supplemental Agreement Amount(\$)	%
1	\$6,811.83	0.08%	\$6,811.83	0.08%	\$6,811.83	0.08%
2	\$4,715.14	0.06%	\$4,715.14	0.06%	\$4,715.14	0.06%
3	\$5,150.22	0.06%	\$5,150.22	0.06%	\$5,150.22	0.06%
4	\$39,816.26	0.47%	\$39,816.26	0.47%	\$39,816.26	0.47%
TOTAL	\$56,493.45	0.67%	\$56,493.45	0.67%	\$56,493.45	0.67%

Change Orders with Cumulative Total of \$75,000 or Less (Information Only)
January 11, 2021 Commission Meeting

Project Number:	TAP-272D(280)IG	CO APPROVAL:	Dec. 08, 2020	AGENDA ITEM	
		Contract ID:	190333		
Contractor :	TRI-STAR CONSTRUCTION, LLC	Job Piece No.:	31620(04)	8Z	
		Highway No.:	CITY STREETS		
Designer:	MCCLELLAND CONSULTING ENGINEERS, INC.	Div. / County.:	08 / TULSA		
Description:	PEDESTRIAN IMPROVEMENTS (SIDEWALKS) CITY STREETS (E. 36TH PL/E. 37TH ST/S. QUINCY AVE/ S. ROCKFORD AVE); AT MULTIPLE LOCATIONS IN TULSA. PROJECT LENGTH = 1.580 MILES				
Contract Amount:	\$500,000.00	Funds Available:	\$524,177.62	Funds Paid(%) :	94%
Change Order	1	Original Time Used:	97%	Revised Time Used:	97%

Change Order No. 1 approves a supplemental agreement and an additional appropriation in the amount of \$24,177.62.

Site Requirement: This change provides payment for the irrigation system pay item required to remove and replace irrigation systems installed on the right-of-way by various landowners. Funding for this work will be non-participating in nature.

NEW ITEM (NON-PARTICIPATING) \$24,177.62
 Irrigation System 1.00 LSUM \$24,177.62 /LSUM \$24,177.62

CHANGE ORDER ACTIONS						
CHANGE ORDER NO.	(+) Overrun (-) Underrun Amount (\$)	%	Appropriated Amount (\$)	%	Supplemental Agreement Amount(\$)	%
1	\$24,177.62	4.84%	\$24,177.62	4.84%	\$24,177.62	4.84%
TOTAL	\$24,177.62	4.84%	\$24,177.62	4.84%	\$24,177.62	4.84%

Change Orders with Cumulative Total of \$75,000 or Less (Information Only)

January 11, 2021 Commission Meeting

Project Number:	TAP-272E(282)IG		CO APPROVAL:	Nov. 13, 2020	AGENDA ITEM
			Contract ID:	200087	
Contractor :	ELLSWORTH CONSTRUCTION, LLC		Job Piece No.:	33039(04)	8AA
			Highway No.:	TRAILS	
Designer:	MARQUARDT ENGINEERING, PLLC.		Div. / County.:	08 / TULSA	
Description:	PEDESTRIAN IMPROVEMENTS (TRAIL CONSTRUCTION) TRAILS (CHURCHILL PARK AND SOUTH CREEK SUBDIVISIONS): BETWEEN ELM STREET AND ELWOOD AVENUE IN THE CITY OF JENKS. PROJECT LENGTH = 1.885 MILES				
Contract Amount:	\$261,105.80	Funds Available:	\$261,105.80	Funds Paid(%) :	74%
Change Order	1	Original Time Used:	78%	Revised Time Used:	78%

Change Order No. 1 approves a supplemental agreement resulting in an underrun to the contract in the amount of \$1.43.

Site Requirement: This change provides for the salvaged topsoil pay item required to backfill against the edge of the sidewalk due to some areas needing thicker layers of asphalt in order to maintain cross-slope requirements; and for the stationary bollard pay item required to remove and reset eighteen existing bollards due to being in conflict with construction of the new ADA acceptable ramps. This change documents the underrun of the solid slab sodding pay item due to less area being disturbed than originally planned.

NEW ITEMS				\$21,822.32
Type A-Salvaged Topsoil	440.00 CY		\$33.91 /CY	\$14,920.40
Stationary Bollard (Remove & Reset Existing)	18.00 EA		\$383.44 /EA	\$6,901.92
UNDERRUN ITEM				-\$21,823.75
Solid Slab Sodding	-5,135.00 SY		\$4.25 /SY	-\$21,823.75

CHANGE ORDER ACTIONS						
CHANGE ORDER NO.	(+) Overrun (-) Underrun Amount (\$)	%	Appropriated Amount (\$)	%	Supplemental Agreement Amount(\$)	%
1	-\$1.43	0.00%	\$0.00	0.00%	\$0.00	0.00%
TOTAL	-\$1.43	0.00%	\$0.00	0.00%	\$0.00	0.00%

Change Orders with Cumulative Total Greater than \$75,000

JANUARY 11, 2021 Commission Meeting

ITEM	COUNTY	PROJECT NUMBER	FED OVER	CONTRACT	JPN	CHANGE ORDER	UNDER/ OVER RUN
9A	CIMARRON	NHPP-034N(001)PM	<input type="checkbox"/>	190383	2094104	006	\$34,924.67
9B	CIMARRON	NHPP-034N(001)PM	<input type="checkbox"/>	190383	2094104	007	\$48,000.00
9C	CLEVELAND	STP-214C(080)AG	<input type="checkbox"/>	170313	2928904	009	\$16,930.88
9D	CLEVELAND	STP-214B(091)AG	<input type="checkbox"/>	190174	3060604	004	\$95,660.13
9E	COMANCHE	STP-116B(137)MS	<input type="checkbox"/>	170248	2341004	015	\$28,566.71
9F	GARVIN	CIRB-225C(073)RB / CIRB-225C(074)RB	<input type="checkbox"/>	180354	2784804	005	\$44,719.07
9G	HASKELL	CIRB-231C(040)RB	<input type="checkbox"/>	200043	2849904	002	\$166,677.88
9H	HASKELL	STP-231B(042)PM	<input type="checkbox"/>	200152	3119504	001	\$85,130.36
9I	JEFFERSON	STP-234B(014)SS	<input type="checkbox"/>	170123	2797704	006	\$63,185.60
9J	KIOWA	STP-275C(035)SS / ACSTP-238C(037)SS	<input type="checkbox"/>	160320	2899904	010	\$3,986.15
9K	LOGAN	STP-242C(070)AG	<input type="checkbox"/>	180242	3264104	003	\$1,489,390.67
9L	MCCLAIN	NHPPI-3500-(074)PM	<input type="checkbox"/>	190013	2722004	005	\$13,459.84
9M	MURRAY	TAP-250D(022)TP / SSP-250N(018)PM	<input type="checkbox"/>	190051	3332004	007	\$79,748.50
9N	OKLAHOMA	NHPPI-2350-(009)PM	<input type="checkbox"/>	180359	0903327	013	\$51,846.00
9O	OKLAHOMA	NHPPI-4400-(037)PM / NHPPI-4400- (039)PM / NHPPI-4400-(040)PM / NHPPI-4400-(041)PM / NHPPI-4400- (042)PM / NHPPI-4400-(043)PM	<input type="checkbox"/>	190120	3100604	003	\$50,000.00
9P	OKLAHOMA	TAP-255C(490)TP / NHPP-255N(489)EH	<input type="checkbox"/>	190323	3298404	004	-\$106,294.75
9Q	OSAGE	SBR-257N(080)SB	<input type="checkbox"/>	200167	3273204	002	\$24,146.85
9R	ROGERS	SSP-266N(056)SS	<input type="checkbox"/>	180030	2317010	007	\$141,220.10
9S	STEPHENS	STP-169B(134)PM	<input type="checkbox"/>	180211	2441204	010	\$1,030.38
9T	STEPHENS	STP-169B(134)PM	<input type="checkbox"/>	180211	2441204	011	\$59,690.97
9U	TILLMAN	STP-271C(067)PM	<input type="checkbox"/>	200035	2951404	003	\$28,435.82
9V	TILLMAN	STP-271C(067)PM	<input type="checkbox"/>	200035	2951404	004	\$90,000.00
9W	TULSA	STP-272C(202)	<input type="checkbox"/>	170141	2793704	004	\$97,295.34
9X	TULSA	STP-272B(278)CI	<input type="checkbox"/>	200085	3070304	005	\$378.47
9Y	WASHITA	MC-009N(102)MD	<input type="checkbox"/>	200219	3477004	001	\$142,312.03

**Change Orders with Cumulative Total Greater than \$75,000
January 11, 2021 Commission Meeting**

Project Number:	NHPP-034N(001)PM		Contract ID:	190383	AGENDA ITEM 9A
Contractor :	INTERSTATE HIGHWAY CONSTRUCTION, INC.		Job Piece No.:	20941(04)	
Designer:	GUY ENGINEERING SERVICES, INC.		Highway No.:	MULTIPLE LOCATIONS	
Description:	GRADE, DRAIN, AND SURFACE US-64 (CIMARRON AVE)/US-385/CITY STREET (MAIN ST): FROM 0.3 MILES SOUTH OF THE SH-325 JCT, EXTEND NORTH IN BOISE CITY. PROJECT LENGTH = 0.994 MILE				
Contract Amount:	\$10,793,088.44	Funds Available:	\$11,176,032.14	Funds Paid(%):	89%
Change Order	6	Original Time Used:	66%	Revised Time Used:	63%

Request approval of Change Order No. 6 for a supplemental agreement and an additional appropriation in the amount of \$34,924.67.

Site Requirement: This change provides payment for the freight and restocking fees incurred by the contractor for returning over 200 feet of unused sewer pipe and casing due to the City of Boise City having already replaced some areas of the planned sewer line; and for the pole-mounted transformer station pay item required to replace the existing transformer due to the existing one being incompatible with the lighting system installed on this project.

NEW ITEMS			\$34,924.67
Pole-Mounted Transformer Station	2.00 EA	\$2,733.44 /EA	\$5,466.88
Construction Miscellaneous (Restocking Fee)(Unused Pipe)	1.00 LSUM	\$11,683.75 /LSUM	\$11,683.75
Construction Miscellaneous (Restocking Fee)(Unused Pipe)	1.00 LSUM	\$17,774.04 /LSUM	\$17,774.04

CHANGE ORDER ACTIONS						
CHANGE ORDER NO.	(+) Overrun (-) Underrun Amount (\$)	%	Appropriated Amount (\$)	%	Supplemental Agreement Amount(\$)	%
1	\$231,444.45	2.14%	\$231,444.45	2.14%	\$231,444.45	2.14%
2	\$96,000.00	0.89%	\$96,000.00	0.89%	\$0.00	0.00%
3	\$7,499.25	0.07%	\$7,499.25	0.07%	\$7,499.25	0.07%
4	\$0.00	0.00%	\$0.00	0.00%	\$0.00	0.00%
5	\$48,000.00	0.44%	\$48,000.00	0.44%	\$0.00	0.00%
6	\$34,924.67	0.32%	\$34,924.67	0.32%	\$34,924.67	0.32%
7	\$48,000.00	0.44%	\$48,000.00	0.44%	\$0.00	0.00%
TOTAL	\$465,868.37	4.32%	\$465,868.37	4.32%	\$273,868.37	2.54%

Change Orders with Cumulative Total Greater than \$75,000

January 11, 2021 Commission Meeting

Project Number:	NHPP-034N(001)PM		Contract ID:	190383	AGENDA ITEM 9B
Contractor :	INTERSTATE HIGHWAY CONSTRUCTION, INC.		Job Piece No.:	20941(04)	
Designer:	GUY ENGINEERING SERVICES, INC.		Highway No.:	MULTIPLE LOCATIONS	
Description:	GRADE, DRAIN, AND SURFACE US-64 (CIMARRON AVE)/US-385/CITY STREET (MAIN ST): FROM 0.3 MILES SOUTH OF THE SH-325 JCT, EXTEND NORTH IN BOISE CITY. PROJECT LENGTH = 0.994 MILE				
Contract Amount:	\$10,793,088.44	Funds Available:	\$11,176,032.14	Funds Paid(%) :	95%
Change Order	7	Original Time Used:	66%	Revised Time Used:	63%

Request approval of Change Order No. 7 for an additional appropriation in the amount of \$48,000.00.

Site Requirement: This change provides payment for the early completion incentive earned by the contractor for achieving substantial completion on Milestone No. 3 prior to the time allowed in the contract.

NEW ITEM

\$48,000.00

Incentive for Early Completion (Milestone No. 3) 12.00 DAY \$4,000.00 /DAY \$48,000.00

CHANGE ORDER ACTIONS						
CHANGE ORDER NO.	(+) Overrun (-) Underrun Amount (\$)	%	Appropriated Amount (\$)	%	Supplemental Agreement Amount(\$)	%
1	\$231,444.45	2.14%	\$231,444.45	2.14%	\$231,444.45	2.14%
2	\$96,000.00	0.89%	\$96,000.00	0.89%	\$0.00	0.00%
3	\$7,499.25	0.07%	\$7,499.25	0.07%	\$7,499.25	0.07%
4	\$0.00	0.00%	\$0.00	0.00%	\$0.00	0.00%
5	\$48,000.00	0.44%	\$48,000.00	0.44%	\$0.00	0.00%
6	\$34,924.67	0.32%	\$34,924.67	0.32%	\$34,924.67	0.32%
7	\$48,000.00	0.44%	\$48,000.00	0.44%	\$0.00	0.00%
TOTAL	\$465,868.37	4.32%	\$465,868.37	4.32%	\$273,868.37	2.54%

**Change Orders with Cumulative Total Greater than \$75,000
January 11, 2021 Commission Meeting**

Project Number:	STP-214C(080)AG		Contract ID:	170313	AGENDA ITEM 9C
Contractor :	ALLEN CONTRACTING, INC.		Job Piece No.:	29289(04)	
Designer:	TETRA TECH		Highway No.:	CITY STREET	
Description:	GRADE, DRAIN, AND SURFACE CITY STREET (12TH AVENUE SE): FROM 0.4 MILES SOUTH OF SH-9, EXTEND NORTH IN THE CITY OF NORMAN. PROJECT LENGTH = 0.530 MILE				
Contract Amount:	\$2,794,653.90	Funds Available:	\$2,993,582.21	Funds Paid(%) :	100%
Change Order	9	Original Time Used:	141%	Revised Time Used:	99%

Request approval of Change Order No. 9 for a supplemental agreement and an additional appropriation in the amount of \$16,930.88.

Site Requirement: This change provides payment for the final estimate due to the overrun of the solid slab sodding pay item required to ensure adequate permanent erosion control on all disturbed areas of the project; due to the overrun of the asphalt surfacing pay item required to provide smooth transitions with the existing pavement; and due to the overrun of the arrow display and wing barricades pay items required to provide adequate direction to the traveling public during construction.

The cost of this change is partially offset by the underrun of other items of work.

OVERRUN ITEMS				\$15,384.04
Superpave, Type S4 (PG 76-28 OK)	82.23 TON	\$80.05 /TON		\$6,582.51
Solid Slab Sodding	3,346.59 SY	\$2.63 /SY		\$8,801.53
OVERRUN OF PREVIOUSLY ESTABLISHED C/O ITEMS				\$1,746.00
Arrow Display (Type C)	101.00 SD	\$11.00 /SD		\$1,111.00
Wing Barricades	500.00 SD	\$1.27 /SD		\$635.00

CHANGE ORDER ACTIONS						
CHANGE ORDER NO.	(+) Overrun (-) Underrun Amount (\$)	%	Appropriated Amount (\$)	%	Supplemental Agreement Amount(\$)	%
1	\$0.00	0.00%	\$0.00	0.00%	\$0.00	0.00%
2	\$95,787.15	3.43%	\$95,787.15	3.43%	\$95,787.15	3.43%
3	\$1,269.60	0.05%	\$1,269.60	0.05%	\$1,269.60	0.05%
4	-\$881.46	-0.03%	\$0.00	0.00%	\$0.00	0.00%
5	\$11,526.40	0.41%	\$11,526.40	0.41%	\$11,526.40	0.41%
6	\$1,610.95	0.06%	\$1,610.95	0.06%	\$1,610.95	0.06%
7	\$88,734.21	3.18%	\$88,734.21	3.18%	\$0.00	0.00%
8	-\$1,856.00	-0.07%	\$0.00	0.00%	\$0.00	0.00%
9	\$16,930.88	0.61%	\$16,930.88	0.61%	\$1,746.00	0.06%
TOTAL	\$213,121.73	7.63%	\$215,859.19	7.72%	\$111,940.10	4.01%

Change Orders with Cumulative Total Greater than \$75,000

January 11, 2021 Commission Meeting

Project Number:	STP-214B(091)AG	Contract ID:	190174	AGENDA ITEM
Contractor :	CROSSLAND HEAVY CONTRACTORS INC.	Job Piece No.:	30606(04)	9D
Designer:	GARVER ENGINEERING	Highway No.:	CITY STREETS	
Description:	INTERSECTION MODIFICATION AND TRAFFIC SIGNAL CITY STREETS (24TH AVENUE NW): AT THE INTERSECTION OF TEE DRIVE/TEE CIR IN THE CITY OF NORMAN. PROJECT LENGTH = 0.115 MILE			
Contract Amount:	\$1,475,000.00	Funds Available:	\$1,492,817.90	Funds Paid(%) : 99%
Change Order	4	Original Time Used:	196%	Revised Time Used: 107%

Request approval of Change Order No. 4 for a supplemental agreement and an additional appropriation in the amount of \$95,660.13.

Site Requirement: This change provides payment for the overrun of the warning lights and construction signs pay items required to complete the project as specified due to the additional time previously granted on Change Order No. 3; for the overrun of the 2-inch high density bored pipe required to provide electricity to the new street lighting as planned due to varying site conditions which required the pipe to be bored in lieu of trenched; for the overrun of the concrete placement pay item required to reconstruct the pavement along Tee Drive due to discovering during construction that more needed to be replaced than planned; for the additional work required to repair and seal cracks that occurred due to boring operations; and for the utilization of specialty signs to direct the travelling public to nearby local businesses affected by driveway closures. This change imposes deductions for cracked concrete panels, improperly placed multi-polymer traffic striping, and other cracking due to pipe boring operations. Funding for the specialty signs will be non-participating in nature.

NEW ITEMS			-\$11,340.47
Construction Miscellaneous (Epoxy Repair and Crack Seal)	1.00 LS	\$4,657.75 /LS	\$4,657.75
Traffic Stripe (Multi-Poly.)(4" Wide)	-360.00 LF	\$0.60 /LF	-\$216.00
Construction Miscellaneous (Deduction for Cracked Panels)	1.00 LSUM	-\$1,716.12 /LSUM	-\$1,716.12
Construction Miscellaneous (Deduction for Boring Cracks)	1.00 LSUM	-\$14,066.10 /LSUM	-\$14,066.10
NEW ITEM (NON-PARTICIPATING)			\$241.60
Construction Miscellaneous (Specialty Signs)	1.00 LSUM	\$241.60 /LSUM	\$241.60
OVERRUN ITEMS			\$106,759.00
P. C. Concrete Pavement (Placement)	417.17 SY	\$50.00 /SY	\$20,858.50
2" High Density PE Pipe - Bored	534.00 LF	\$54.00 /LF	\$28,836.00
Warning Lights (Type A)	5,326.00 SD	\$8.25 /SD	\$43,939.50
Construction Signs 16.0 SF to 32.99 SF	2,625.00 SD	\$5.00 /SD	\$13,125.00

CHANGE ORDER ACTIONS						
CHANGE ORDER NO.	(+) Overrun (-) Underrun Amount (\$)	%	Appropriated Amount (\$)	%	Supplemental Agreement Amount(\$)	%
1	\$724.80	0.05%	\$724.80	0.05%	\$724.80	0.05%
2	\$17,093.10	1.16%	\$17,093.10	1.16%	\$17,093.10	1.16%
3	\$0.00	0.00%	\$0.00	0.00%	\$0.00	0.00%
4	\$95,660.13	6.49%	\$95,660.13	6.49%	\$4,899.35	0.33%
TOTAL	\$113,478.03	7.69%	\$113,478.03	7.69%	\$22,717.25	1.54%

**Change Orders with Cumulative Total Greater than \$75,000
January 11, 2021 Commission Meeting**

Project Number:	STP-116B(137)MS		Contract ID:	170248	AGENDA ITEM 9E
Contractor :	ALLEN CONTRACTING, INC./SHELL CONSTRUCTION CO., INC. (JV)		Job Piece No.:	23410(04)	
Designer:	ROBERT B. HENDRICK & SONS CO.		Highway No.:	CITY STREET	
Description:	GRADE, DRAIN, SURFACE, AND TRAFFIC SIGNAL CITY STREET (SE 45TH STREET): FROM SH-7 (LEE BOULEVARD), EXTEND NORTH IN LAWTON. PROJECT LENGTH = 1.292 MILES.				
Contract Amount:	\$8,319,903.28	Funds Available:	\$8,901,891.44	Funds Paid(%) :	100%
Change Order	15	Original Time Used:	149%	Revised Time Used:	95%

Request approval of Change Order No. 15 for an additional appropriation in the amount of \$28,566.71.

Site Requirement: This change provides payment for the final estimate due to the overrun of the temporary construction signing pay item. Additional quantities of this item were required to provide adequate direction to the travelling public during construction due to the extended duration of the project.

The cost of this change is partially offset by the underrun of other items of work.

OVERRUN ITEM	\$34,184.92
Construction Signs 16.0 SF to 32.99 SF	11,099.00 SD \$3.08 /SD \$34,184.92

CHANGE ORDER ACTIONS							
CHANGE ORDER NO.	(+) Overrun (-) Underrun Amount (\$)	%	Appropriated Amount (\$)	%	Supplemental Agreement Amount(\$)	%	
1	\$39,340.51	0.47%	\$39,340.51	0.47%	\$39,340.51	0.47%	
2	\$12,685.82	0.15%	\$12,685.82	0.15%	\$12,685.82	0.15%	
3	\$4,688.64	0.06%	\$4,688.64	0.06%	\$4,688.64	0.06%	
4	\$0.00	0.00%	\$0.00	0.00%	\$0.00	0.00%	
5	\$2,555.42	0.03%	\$2,555.42	0.03%	\$2,555.42	0.03%	
6	\$0.00	0.00%	\$0.00	0.00%	\$0.00	0.00%	
7	\$63,979.64	0.77%	\$63,979.64	0.77%	\$63,979.64	0.77%	
8	\$66,444.71	0.80%	\$66,444.71	0.80%	\$0.00	0.00%	
9	\$2,655.30	0.03%	\$2,655.30	0.03%	\$2,655.30	0.03%	
10	\$97,030.67	1.17%	\$97,030.67	1.17%	\$86,172.00	1.04%	
11	\$95,726.00	1.15%	\$95,726.00	1.15%	\$95,726.00	1.15%	
12	\$76,992.30	0.93%	\$76,992.30	0.93%	\$76,992.30	0.93%	
13	\$99,327.07	1.19%	\$99,327.07	1.19%	\$83,269.02	1.00%	
14	\$20,562.08	0.25%	\$20,562.08	0.25%	\$0.00	0.00%	
15	\$28,566.71	0.34%	\$28,566.71	0.34%	\$0.00	0.00%	
TOTAL	\$610,554.87	7.34%	\$610,554.87	7.34%	\$468,064.65	5.63%	

Change Orders with Cumulative Total Greater than \$75,000

January 11, 2021 Commission Meeting

Project Number:	CIRB-225C(073)RB / CIRB-225C(074)RB			AGENDA ITEM	
			Contract ID:	180354	9F
Contractor :	OVERLAND CORPORATION		Job Piece No.:	27848(04)	
			Highway No.:	COUNTY ROAD	
Designer:	CEC CORPORATION		Div. / County.:	03 / GARVIN	
Description:	GRADE, DRAIN, AND SURFACE COUNTY ROAD (INDIAN MERIDIAN ROAD/NS-323): FROM THE SH-29 JUNCTION, EXTEND SOUTH NEAR WYNNEWOOD. PROJECT LENGTH = 5.014 MILES				
Contract Amount:	\$5,076,832.92	Funds Available:	\$5,170,344.15	Funds Paid(%) :	93%
Change Order	5	Original Time Used:	99%	Revised Time Used:	99%

Request approval of Change Order No. 5 for an additional appropriation in the amount of \$44,719.07.

Site Requirement: This change provides payment for the overrun of the unclassified excavation and borrow pay items on the South project required to remove and replace areas of unsuitable subgrade material discovered during construction. This change alters the method of measurement for the unclassified borrow pay items on both projects from measured to plan quantity.

OVERRUN ITEMS			\$44,719.07
Unclassified Excavation	2,450.36 CY	\$10.75 /CY	\$26,341.37
Unclassified Borrow	2,450.36 CY	\$7.50 /CY	\$18,377.70

CHANGE ORDER ACTIONS						
CHANGE ORDER NO.	(+) Overrun (-) Underrun Amount (\$)	%	Appropriated Amount (\$)	%	Supplemental Agreement Amount(\$)	%
1	\$0.00	0.00%	\$0.00	0.00%	\$0.00	0.00%
2	\$16,351.18	0.32%	\$16,351.18	0.32%	\$16,351.18	0.32%
3	\$39,662.63	0.78%	\$39,662.63	0.78%	\$25,265.57	0.50%
4	\$37,497.42	0.74%	\$37,497.42	0.74%	\$37,497.42	0.74%
5	\$44,719.07	0.88%	\$44,719.07	0.88%	\$0.00	0.00%
TOTAL	\$138,230.30	2.72%	\$138,230.30	2.72%	\$79,114.17	1.56%

**Change Orders with Cumulative Total Greater than \$75,000
January 11, 2021 Commission Meeting**

Project Number:	CIRB-231C(040)RB		Contract ID:	200043	AGENDA ITEM 9G
Contractor :	KOSS CONSTRUCTION COMPANY & SUBSIDIARY		Job Piece No.:	28499(04)	
Designer:	CED #2		Highway No.:	COUNTY ROADS	
Description:	GRADE, DRAIN, SURFACE, AND BRIDGE COUNTY ROADS (STAR RD/E1175/D1171): FROM SH-9, EXTEND NORTH ON STAR ROAD THEN EAST ON E1175 AND D1171 NEAR KEOTA. PROJECT LENGTH = 6.685 MILES				
Contract Amount:	\$7,518,071.77	Funds Available:	\$7,549,478.73	Funds Paid(%) :	29%
Change Order	2	Original Time Used:	63%	Revised Time Used:	63%

Request approval of Change Order No. 2 for a supplemental agreement and an additional appropriation in the amount of \$166,677.88.

Site Requirement: This change provides payment for the additional work required to relocate an existing 6-inch waterline discovered during construction due to it conflicting with construction of the roadway. This change extends the contract time fourteen days to complete this additional work.

NEW ITEMS			\$10,106.49
6" x 6" x 6" Tee	1.00 EA	\$1,405.09 /EA	\$1,405.09
Hydrostatic Pressure Testing & Disinfect	1.00 LSUM	\$8,701.40 /LSUM	\$8,701.40
OVERRUN ITEMS			\$156,571.39
4" Tap	4.00 EA	\$558.55 /EA	\$2,234.20
4" x 4" Tapping Sleeve	4.00 EA	\$1,408.72 /EA	\$5,634.88
8" Steel Casing	45.00 LF	\$269.24 /LF	\$12,115.80
4" Solid Sleeve	1.00 EA	\$590.96 /EA	\$590.96
Service Connection (Short)	2.00 EA	\$1,185.81 /EA	\$2,371.62
Service Connection (Long)	1.00 EA	\$1,291.44 /EA	\$1,291.44
4" 90 Degree Fitting	4.00 EA	\$853.37 /EA	\$3,413.48
4" Plug	4.00 EA	\$1,127.44 /EA	\$4,509.76
2" Polyvinyl Chloride (PVC) Pipe	50.00 LF	\$8.22 /LF	\$411.00
4" Polyvinyl Chloride (PVC) Pipe	4,042.00 LF	\$15.71 /LF	\$63,499.82
6" Polyvinyl Chloride (PVC) Pipe	1,915.00 LF	\$22.68 /LF	\$43,432.20
4" Gate Valve	5.00 EA	\$2,263.45 /EA	\$11,317.25
6" Gate Valve	2.00 EA	\$2,874.49 /EA	\$5,748.98

CHANGE ORDER ACTIONS						
CHANGE ORDER NO.	(+) Overrun (-) Underrun Amount (\$)	%	Appropriated Amount (\$)	%	Supplemental Agreement Amount(\$)	%
1	\$18,738.00	0.25%	\$18,738.00	0.25%	\$18,738.00	0.25%
2	\$166,677.88	2.22%	\$166,677.88	2.22%	\$10,106.49	0.13%
3	\$12,668.96	0.17%	\$12,668.96	0.17%	\$12,668.96	0.17%
TOTAL	\$198,084.84	2.63%	\$198,084.84	2.63%	\$41,513.45	0.55%

**Change Orders with Cumulative Total Greater than \$75,000
January 11, 2021 Commission Meeting**

Project Number:	STP-231B(042)PM		Contract ID:	200152	AGENDA ITEM 9H
Contractor :	C-GAWF CONSTRUCTION, INC.		Job Piece No.:	31195(04)	
Designer:	OKLA. DEPT. OF TRANSPORTATION		Highway No.:	SH-2	
Description:	GRADE, DRAIN, AND SURFACE SH-2: FROM 2.3 MILES NORTH OF THE LATIMER COUNTY LINE, EXTEND NORTH NEAR WILBURTON. PROJECT LENGTH = 0.159 MILE				
Contract Amount:	\$1,250,001.46	Funds Available:	\$1,250,001.46	Funds Paid(%) :	81%
Change Order	1	Original Time Used:	86%	Revised Time Used:	86%

Request approval of Change Order No. 1 for a supplemental agreement and an additional appropriation in the amount of \$85,130.36.

Site Requirement: This change provides payment for the additional work required to reinforce and brace the newly constructed retaining wall on this project due to the piles rotating and flexing shortly after construction. This change documents the underrun of the solid slab sodding pay item due to it not being required to complete this project.

NEW ITEMS				\$108,275.24
Construction Miscellaneous (Retaining Wall Repair)	1.00 LSUM	\$49,718.44 /LSUM		\$49,718.44
Piles, Furnished (HP 10 x 42)	950.00 LF	\$30.95 /LF		\$29,402.50
Piles, Driven (HP 10 x 42)	665.00 LF	\$25.42 /LF		\$16,904.30
Mobilization (Additional)	1.00 LS	\$12,250.00 /LS		\$12,250.00
UNDERRUN ITEM				-\$23,144.88
Solid Slab Sodding	-2,904.00 SY	\$7.97 /SY		-\$23,144.88

CHANGE ORDER ACTIONS						
CHANGE ORDER NO.	(+) Overrun (-) Underrun Amount (\$)	%	Appropriated Amount (\$)	%	Supplemental Agreement Amount(\$)	%
1	\$85,130.36	6.81%	\$85,130.36	6.81%	\$85,130.36	6.81%
TOTAL	\$85,130.36	6.81%	\$85,130.36	6.81%	\$85,130.36	6.81%

**Change Orders with Cumulative Total Greater than \$75,000
January 11, 2021 Commission Meeting**

Project Number:	STP-234B(014)SS		Contract ID:	170123	AGENDA ITEM 9I
Contractor :	FRONTIER BRIDGE, INC.		Job Piece No.:	27977(04)	
Designer:	TETRA TECH		Highway No.:	SH-79	
Description:	BRIDGE AND APPROACHES SH-79: OVER THE RED RIVER, 0.5 MILE NORTH OF THE TEXAS STATE LINE. PROJECT LENGTH = 1.189 MILES.				
Contract Amount:	\$11,164,064.48	Funds Available:	\$11,233,997.65	Funds Paid(%):	100%
Change Order	6	Original Time Used:	103%	Revised Time Used:	100%

Request approval of Change Order No. 6 for an additional appropriation in the amount of \$63,185.60.

Site Requirement: This change provides payment for the overrun of the construction zone impact attenuator pay item required to ensure the safety of the traveling public and contractor personnel during construction due to weather related delays extending the duration of this project.

OVERRUN ITEM			\$63,185.60
Const. Zone Impact Atten.	391.00 SD	\$161.60 /SD	\$63,185.60

CHANGE ORDER ACTIONS						
CHANGE ORDER NO.	(+) Overrun (-) Underrun Amount (\$)	%	Appropriated Amount (\$)	%	Supplemental Agreement Amount(\$)	%
1	\$7,725.00	0.07%	\$7,725.00	0.07%	\$7,725.00	0.07%
2	-\$10,169.12	-0.09%	\$0.00	0.00%	\$0.00	0.00%
3	\$0.00	0.00%	\$0.00	0.00%	\$0.00	0.00%
4	\$62,208.17	0.56%	\$62,208.17	0.56%	\$0.00	0.00%
6	\$63,185.60	0.57%	\$63,185.60	0.57%	\$0.00	0.00%
TOTAL	\$122,949.65	1.10%	\$133,118.77	1.19%	\$7,725.00	0.07%

Change Orders with Cumulative Total Greater than \$75,000

January 11, 2021 Commission Meeting

Project Number:	STP-275C(035)SS / ACSTP-238C(037)SS		Contract ID:	160320	AGENDA ITEM 9J
Contractor :	K & R BUILDERS, INC.		Job Piece No.:	28999(04)	
Designer:	SMITH, ROBERTS, & BALDSCHWILER, LLC.		Highway No.:	SH-44	
Description:	BRIDGE AND APPROACHES SH-44: OVER ELK CREEK, ELK CREEK O'FLOW, AND DRY ELK CREEK, 7.6 MI, 7.8 MI AND 11.4 MILES NORTH OF SH-9 NEAR SENTINEL. PROJECT LENGTH = 0.410 MILE.				
Contract Amount:	\$3,321,240.72	Funds Available:	\$3,988,159.46	Funds Paid(%) :	99%
Change Order	10	Original Time Used:	84%	Revised Time Used:	81%

Request approval of Change Order No. 10 for an additional appropriation in the amount of \$3,986.15.

Site Requirement: This change provides payment for the additional expense incurred by the contractor due to the increase of the asphalt binder price index as provided for in the contract.

NEW ITEMS	\$3,986.15
Asphalt Binder Price Adjustment - JP#28774(04)	1.00 LSUM \$1,262.02 /LSUM \$1,262.02
Asphalt Binder Price Adjustment - JP#28999(04)	1.00 LSUM \$2,724.13 /LSUM \$2,724.13

CHANGE ORDER ACTIONS						
CHANGE ORDER NO.	(+) Overrun (-) Underrun Amount (\$)	%	Appropriated Amount (\$)	%	Supplemental Agreement Amount(\$)	%
1	\$8,061.50	0.24%	\$8,061.50	0.24%	\$4,250.00	0.13%
2	\$98,535.96	2.97%	\$98,535.96	2.97%	\$6,375.00	0.19%
3	\$17,616.67	0.53%	\$17,616.67	0.53%	\$17,616.67	0.53%
4	\$240,000.00	7.23%	\$240,000.00	7.23%	\$0.00	0.00%
5	\$110,553.35	3.33%	\$110,553.35	3.33%	\$0.00	0.00%
6	\$141,504.41	4.26%	\$141,504.41	4.26%	\$141,504.41	4.26%
7	\$2,800.00	0.08%	\$2,800.00	0.08%	\$2,800.00	0.08%
8	\$11,319.47	0.34%	\$11,319.47	0.34%	\$0.00	0.00%
9	\$36,527.38	1.10%	\$36,527.38	1.10%	\$0.00	0.00%
10	\$3,986.15	0.12%	\$3,986.15	0.12%	\$0.00	0.00%
TOTAL	\$670,904.89	20.20%	\$670,904.89	20.20%	\$172,546.08	5.20%

Change Orders with Cumulative Total Greater than \$75,000

January 11, 2021 Commission Meeting

Project Number:	STP-242C(070)AG		Contract ID:	180242	AGENDA ITEM 9K
Contractor :	HASKELL LEMON CONSTRUCTION CO.		Job Piece No.:	32641(04)	
Designer:	MEHLBURGER BRAWLEY, INC.		Highway No.:	COUNTY ROAD	
Description:	GRADE, DRAIN, AND SURFACE COUNTY ROAD (COLTRANE ROAD): FROM SIMPSON ROAD, EXTEND NORTH NEAR EDMOND. PROJECT LENGTH = 1.991 MILES				
Contract Amount:	\$3,156,262.28	Funds Available:	\$3,198,985.28	Funds Paid(%):	86%
Change Order	3	Original Time Used:	317%	Revised Time Used:	317%

Request approval of Change Order No. 3 for a supplemental agreement and an additional appropriation in the amount of \$1,489,390.67.

Site Requirement: This change provides payment for the additional work required to construct the roadway at a higher elevation in lieu of relocating several underground utilities due to the additional construction costing less than relocating the utilities. This change extends the contract time four hundred and ten days (two hundred and twenty-one days due to delays caused by the plans being redesigned, and one hundred and eighty-nine days to complete the additional work added to the plans).

NEW ITEMS				\$392,092.69
Portland Cement	744.00 TON	\$177.90 /TON		\$132,357.60
Clay Plating	500.00 CY	\$16.50 /CY		\$8,250.00
Remove and Relocate Utilities	1.00 LSUM	\$15,294.40 /LSUM		\$15,294.40
Beam Guardrail W-Beam Single	400.00 LF	\$26.15 /LF		\$10,460.00
Guardrail End Treatment (GET)	2.00 EA	\$3,135.00 /EA		\$6,270.00
Mobilization (Remobilization)(Cimarron Construction)	1.00 LSUM	\$12,500.00 /LSUM		\$12,500.00
Mobilization (Remobilization)(JenTech Construction)	1.00 LSUM	\$63,852.65 /LSUM		\$63,852.65
SWPPP Documentation and Management (Additional)	1.00 LSUM	\$15,000.00 /LSUM		\$15,000.00
Construction Misc. (Maintenance during Redesign Period)	32.00 EA	\$3,000.00 /EA		\$96,000.00
Construction Traffic Control (Additional)(Detour)	1.00 LS	\$2,588.04 /LS		\$2,588.04
Construction Traffic Control (Additional)(Added Days)	410.00 SD	\$72.00 /SD		\$29,520.00
OVERRUN ITEMS				\$1,218,031.58
Unclassified Excavation	12,263.25 CY	\$7.50 /CY		\$91,974.38
Unclassified Borrow	52,073.00 CY	\$8.80 /CY		\$458,242.40
Traffic Bound Surface Course Type E	411.00 TON	\$36.80 /TON		\$15,124.80
Type B4 Culvert End Treatment	26.00 EA	\$1,333.00 /EA		\$34,658.00
Class C Concrete	1,712.00 CY	\$361.00 /CY		\$618,032.00
UNDERRUN ITEM				-\$120,733.60
Cement Kiln Dust	-1,786.00 TON	\$67.60 /TON		-\$120,733.60

CHANGE ORDER ACTIONS						
CHANGE ORDER NO.	(+ Overrun (-) Underrun Amount (\$)	%	Appropriated Amount (\$)	%	Supplemental Agreement Amount(\$)	%
1	\$0.00	0.00%	\$0.00	0.00%	\$0.00	0.00%
2	\$42,723.00	1.35%	\$42,723.00	1.35%	\$42,723.00	1.35%
3	\$1,489,390.67	47.19%	\$1,489,390.67	47.19%	\$241,839.09	7.66%
TOTAL	\$1,532,113.67	48.54%	\$1,532,113.67	48.54%	\$284,562.09	9.02%

Change Orders with Cumulative Total Greater than \$75,000

January 11, 2021 Commission Meeting

Project Number:	NHPPI-3500-(074)PM		Contract ID:	190013	AGENDA ITEM 9L
Contractor :	SILVER STAR CONSTRUCTION COMPANY, INC.		Job Piece No.:	27220(04)	
Designer:	POE & ASSOCIATES, INC.		Highway No.:	I-35/CNTY RD	
Description:	GRADE, DRAIN, SURFACE, AND BRIDGE I-35/CNTY RD(LADD RD): I-35, FROM 3.3 MI SE OF SH-74, EXT N. CNTY RD (LADD RD), FROM 0.2 MI W OF I-35, EXT E IN GOLDSBY. PROJECT LENGTH = 0.980 MILE				
Contract Amount:	\$9,029,100.00	Funds Available:	\$10,329,728.23	Funds Paid(%) :	98%
Change Order	5	Original Time Used:	137%	Revised Time Used:	102%

Request approval of Change Order No. 5 for a supplemental agreement and an additional appropriation in the amount of \$13,459.84.

Site Requirement: This change provides payment for the rumble strip pay item required to construct rumble strip on the inside shoulders of I-35 due to the shoulders being replaced earlier during construction for being too deteriorated to be utilized for temporary traffic shifts; and for the overrun of the unclassified excavation pay item required to remove unsuitable subgrade material discovered under Ramp F. This change extends the contract time nine days to complete this additional work. This change alters the method of measurement for line item number 8002 - Epoxy Coated Reinforcing Steel from measured to plan quantity; and line item number 8004 - Construction Miscellaneous from plan quantity to measured.

NEW ITEM		\$7,200.00
Rumble Strip-Method HMA-Con	12,000.00 LF	\$0.60 /LF
		\$7,200.00
OVERRUN ITEM		\$6,259.84
Unclassified Excavation	391.24 CY	\$16.00 /CY
		\$6,259.84

CHANGE ORDER ACTIONS						
CHANGE ORDER NO.	(+) Overrun (-) Underrun Amount (\$)	%	Appropriated Amount (\$)	%	Supplemental Agreement Amount(\$)	%
1	\$137,990.00	1.53%	\$137,990.00	1.53%	\$137,990.00	1.53%
2	\$90,663.39	1.00%	\$90,663.39	1.00%	\$25,281.25	0.28%
3	\$1,071,974.84	11.87%	\$1,071,974.84	11.87%	\$453,485.49	5.02%
4	-\$900.00	-0.01%	\$0.00	0.00%	\$0.00	0.00%
5	\$13,459.84	0.15%	\$13,459.84	0.15%	\$7,200.00	0.08%
TOTAL	\$1,313,188.07	14.54%	\$1,314,088.07	14.55%	\$623,956.74	6.91%

Change Orders with Cumulative Total Greater than \$75,000

January 11, 2021 Commission Meeting

Project Number:	TAP-250D(022)TP / SSP-250N(018)PM			AGENDA ITEM		
Contractor :	SEAL MASTERS, INC. DBA PAVERS, INC.			Contract ID:	190051	
				Job Piece No.:	33320(04)	9M
				Highway No.:	SH-7	
Designer:	AGUIRRE & FIELDS, L.P.			Div. / County.:	07 / MURRAY	
Description:	GRADE, DRAIN, SURFACE, AND SIDEWALKS SH-7: FROM 0.1 MILE EAST OF THE US-77 JUNCTION, EXTEND EAST IN DAVIS. PROJECT LENGTH = 1.324 MILES					
Contract Amount:	\$3,517,749.58	Funds Available:	\$3,807,531.98	Funds Paid(%) :	99%	
Change Order	7	Original Time Used:	125%	Revised Time Used:	125%	

Request approval of Change Order No. 7 for a supplemental agreement and an additional appropriation in the amount of \$79,748.50.

Site Requirement: This change provides payment for the materials required to repair a county road due to it being utilized as an unplanned detour during construction.

NEW ITEMS			\$79,748.51
Construction Miscellaneous (Aggregate Base - Material Only)	3,622.74 TON	\$10.96 /TON	\$39,705.23
Construction Miscellaneous (Liquid Asphalt - Material Only)	15,580.63 GAL	\$1.84 /GAL	\$28,668.36
Construction Miscellaneous (5/8" Chips - Material Only)	633.70 TON	\$17.95 /TON	\$11,374.92

CHANGE ORDER ACTIONS						
CHANGE ORDER NO.	(+) Overrun (-) Underrun Amount (\$)	%	Appropriated Amount (\$)	%	Supplemental Agreement Amount(\$)	%
1	\$0.00	0.00%	\$0.00	0.00%	\$0.00	0.00%
2	-\$1,500.00	-0.04%	\$0.00	0.00%	\$0.00	0.00%
3	\$80,950.00	2.30%	\$80,950.00	2.30%	\$16,200.00	0.46%
4	\$90,399.00	2.57%	\$90,399.00	2.57%	\$0.00	0.00%
5	\$23,504.56	0.67%	\$23,504.56	0.67%	\$23,504.56	0.67%
6	\$94,928.84	2.70%	\$94,928.84	2.70%	\$0.00	0.00%
7	\$79,748.50	2.27%	\$79,748.50	2.27%	\$79,748.50	2.27%
TOTAL	\$368,030.90	10.46%	\$369,530.90	10.50%	\$119,453.06	3.40%

**Change Orders with Cumulative Total Greater than \$75,000
January 11, 2021 Commission Meeting**

Project Number:	NHPPI-2350-(009)PM			AGENDA ITEM
Contractor :	ALLEN CONTRACTING, INC.			9N
Designer:	BENHAM DESIGN, LLC.			
Description:	GRADE, DRAIN, SURFACE, AND BRIDGE I-235: FROM THE NW 50TH INTERCHANGE, EXTEND NORTH IN OKLAHOMA CITY. PROJECT LENGTH = 0.957 MILE			
Contract Amount:	\$101,080,883.05	Funds Available:	\$106,018,301.00	Funds Paid(%) : 73%
Change Order	13	Original Time Used:	64%	Revised Time Used: 64%

Request approval of Change Order No. 13 for a supplemental agreement and an additional appropriation in the amount of \$51,846.00.

Engineering: This change provides payment for the removal of concrete pavement with asphalt overlay pay item required to remove areas of the existing pavement in lieu of the removal of concrete pavement pay item as provided for in the plans due to the presence of an asphalt overlay.

NEW ITEM			\$200,070.00
Removal of Conc. Pav. w/Asph. Overlay	19,500.00 SY	\$10.26 /SY	\$200,070.00
UNDERRUN ITEM			-\$148,224.00
Removal of Concrete Pavement	-19,200.00 SY	\$7.72 /SY	-\$148,224.00

CHANGE ORDER ACTIONS						
CHANGE ORDER NO.	(+) Overrun (-) Underrun Amount (\$)	%	Appropriated Amount (\$)	%	Supplemental Agreement Amount(\$)	%
1	\$24,133.76	0.02%	\$24,133.76	0.02%	\$24,133.76	0.02%
2	\$135,340.50	0.13%	\$135,340.50	0.13%	\$41,363.10	0.04%
3	\$291,507.80	0.29%	\$291,507.80	0.29%	\$0.00	0.00%
4	\$14,100.92	0.01%	\$14,100.92	0.01%	\$14,100.92	0.01%
5	\$61,159.00	0.06%	\$61,159.00	0.06%	\$61,159.00	0.06%
6	-\$16,700.00	-0.02%	\$0.00	0.00%	\$0.00	0.00%
8	\$35,817.97	0.04%	\$35,817.97	0.04%	\$35,817.97	0.04%
9	\$4,366,472.77	4.32%	\$4,366,472.77	4.32%	\$4,366,472.77	4.32%
12	\$8,885.23	0.01%	\$8,885.23	0.01%	\$0.00	0.00%
13	\$51,846.00	0.05%	\$51,846.00	0.05%	\$51,846.00	0.05%
TOTAL	\$4,972,563.95	4.92%	\$4,989,263.95	4.94%	\$4,594,893.52	4.55%

Change Orders with Cumulative Total Greater than \$75,000

January 11, 2021 Commission Meeting

Project Number:	NHPPI-4400-(037)PM / NHPPI-4400-(039)PM /		Contract ID:	190120	AGENDA ITEM
	NHPPI-4400-(040)PM / NHPPI-4400-(041)PM /				
	NHPPI-4400-(042)PM / NHPPI-4400-(043)PM				
Contractor :	SHERWOOD CONSTRUCTION CO., INC.		Job Piece No.:	31006(04)	90
			Highway No.:	I-44	
Designer:	OKLA. DEPT. OF TRANSPORTATION		Div. / County.:	04 / OKLAHOMA	
Description:	PAVEMENT REHABILITATION (P.C.) AND BRIDGE REHABILITATION I-44: FROM 0.3 MILES SOUTH OF THE I-240 INTERCHANGE, EXTEND NORTH IN OKLAHOMA CITY. PROJECT LENGTH = 5.785 MILES				
Contract Amount:	\$27,487,533.01	Funds Available:	\$27,526,429.42	Funds Paid(%) :	7%
Change Order	3	Original Time Used:	14%	Revised Time Used:	14%

Request approval of Change Order No. 3 for an additional appropriation in the amount of \$50,000.00.

Site Requirement: This change provides payment for the early completion incentive earned by the contractor for achieving substantial completion of the internal Milestone C for this project prior to the time allowed in the contract.

NEW ITEM			\$50,000.00
Milestone Incentive Compensation (Milestone C)	1.00 LSUM	\$50,000.00 /LSUM	\$50,000.00

CHANGE ORDER ACTIONS						
CHANGE ORDER NO.	(+) Overrun (-) Underrun Amount (\$)	%	Appropriated Amount (\$)	%	Supplemental Agreement Amount(\$)	%
1	\$38,896.41	0.14%	\$38,896.41	0.14%	\$38,896.41	0.14%
2	\$0.00	0.00%	\$0.00	0.00%	\$0.00	0.00%
3	\$50,000.00	0.18%	\$50,000.00	0.18%	\$0.00	0.00%
TOTAL	\$88,896.41	0.32%	\$88,896.41	0.32%	\$38,896.41	0.14%

Change Orders with Cumulative Total Greater than \$75,000

January 11, 2021 Commission Meeting

Project Number:	TAP-255C(490)TP / NHPP-255N(489)EH	Contract ID:	190323	AGENDA ITEM
Contractor :	CROSSLAND HEAVY CONTRACTORS INC.	Job Piece No.:	32984(04)	9P
		Highway No.:	SH-66	
Designer:	R.L. SHEARS COMPANY	Div. / County.:	04 / OKLAHOMA	
Description:	PEDESTRIAN IMPROVEMENTS (TRAIL CONSTRUCTION) SH-66 MULTI-USE TRAIL: FROM MIDWEST BOULEVARD, EXTEND EAST IN THE CITY OF EDMOND. PROJECT LENGTH = 2.427 MILES			
Contract Amount:	\$3,498,010.71	Funds Available:	\$3,707,218.19	Funds Paid(%) : 91%
Change Order	4	Original Time Used:	81%	Revised Time Used: 81%

Request approval of Change Order No. 4 for a supplemental agreement resulting in an underrun to the contract in the amount of \$106,294.75.

Engineering: This change provides for the additional work required to overlay a local road and parking lot in lieu of constructing a new sidewalk trail due to not receiving permission to utilize USACE property before construction began; for the utilization of thermoplastic striping symbols in lieu of multi-polymer as planned due to a request by the contractor; for the asphalt binder adjustment due to an administrative error in SiteManager reducing the price more than intended; for the additional work required to remove and replace the gate, posts and guardrail near the trail entrance east of Douglas Blvd. due to this work being inadvertently omitted from the plans; and for the additional work required to install solar lights in the asphalt surface in lieu of concrete as planned. This change imposes a unit price reduction for that portion of the asphalt surfacing pay item in excess of 125% of the contract amount due to the significant overrun of this major item of work.

NEW ITEMS	-\$109,960.10
Construction Miscellaneous (Rem. & Replace Gate & Gdrail)	1.00 LSUM \$8,150.00 /LSUM \$8,150.00
Traf. Str (Plast) (Symbols, Words, etc)	27.00 EA \$360.00 /EA \$9,720.00
Traf. Str (Plast) (Symbols, Words, etc)	52.00 EA \$360.00 /EA \$18,720.00
Construction Miscellaneous (Solar Lights)	480.00 EA \$14.93 /EA \$7,166.40
Superpave, Type S4 (PG 70-28 OK) (Unit Price Reduction)	1,927.30 TON -\$84.00 /TON -\$161,893.20
Construction Miscellaneous (Asphalt Binder Correction)	1.00 LSUM \$8,176.70 /LSUM \$8,176.70
OVERRUN ITEM	\$414,005.35
Superpave, Type S4 (PG 70-28 OK)	2,101.55 TON \$197.00 /TON \$414,005.35
UNDERRUN ITEMS	-\$410,340.00
Traffic Stripe (Multi-Poly.) (Symbols)	-27.00 EA \$360.00 /EA -\$9,720.00
Traffic Stripe (Multi-Poly.) (Symbols)	-52.00 EA \$360.00 /EA -\$18,720.00
6" Concrete Sidewalk	-6,700.00 SY \$57.00 /SY -\$381,900.00

CHANGE ORDER ACTIONS						
CHANGE ORDER NO.	(+ Overrun - Underrun Amount (\$)	%	Appropriated Amount (\$)	%	Supplemental Agreement Amount(\$)	%
1	\$125,014.26	3.57%	\$125,014.26	3.57%	\$0.00	0.00%
2	\$21,396.42	0.61%	\$21,396.42	0.61%	\$6,371.00	0.18%
3	\$62,796.80	1.80%	\$62,796.80	1.80%	\$30,775.80	0.88%
4	-\$106,294.75	-3.04%	\$0.00	0.00%	\$0.00	0.00%
TOTAL	\$102,912.73	2.94%	\$209,207.48	5.98%	\$37,146.80	1.06%

Change Orders with Cumulative Total Greater than \$75,000

January 11, 2021 Commission Meeting

Project Number:	SBR-257N(080)SB			AGENDA ITEM	
		Contract ID:	200167	9Q	
Contractor :	LOGOS CONSTRUCTION CO., LLC	Job Piece No.:	32732(04)		
		Highway No.:	US-60		
Designer:	FREESE & NICOLS, INC.	Div. / County.:	04 / OSAGE		
Description:	BRIDGE REHABILITATION US-60: OVER COUNTY ROAD AND ARKANSAS RIVER, 0.1 MILES AND 0.3 MILES EAST OF THE US-177 JUNCTION IN PONCA CITY. PROJECT LENGTH = 0.430 MILE				
Contract Amount:	\$1,230,198.84	Funds Available:	\$1,288,548.84	Funds Paid(%) :	30%
Change Order	2	Original Time Used:	25%	Revised Time Used:	25%

Request approval of Change Order No. 2 for a supplemental agreement and an additional appropriation in the amount of \$24,146.85.

Site Requirement: This change provides payment for the elastomeric mortar pay item required to replace existing material over the expansion joints due to this material coming off with the deck removal.

NEW ITEM	\$24,146.85
Elastomeric Mortar	27.30 CF \$884.50 /CF \$24,146.85

CHANGE ORDER ACTIONS						
CHANGE ORDER NO.	(+) Overrun (-) Underrun Amount (\$)	%	Appropriated Amount (\$)	%	Supplemental Agreement Amount(\$)	%
1	\$58,350.00	4.74%	\$58,350.00	4.74%	\$58,350.00	4.74%
2	\$24,146.85	1.96%	\$24,146.85	1.96%	\$24,146.85	1.96%
TOTAL	\$82,496.85	6.71%	\$82,496.85	6.71%	\$82,496.85	6.71%

**Change Orders with Cumulative Total Greater than \$75,000
January 11, 2021 Commission Meeting**

Project Number:	SSP-266N(056)SS		Contract ID:	180030	AGENDA ITEM 9R
Contractor :	BECCO CONTRACTORS, INC.		Job Piece No.:	23170(10)	
Designer:	OKLA. DEPT. OF TRANSPORTATION		Highway No.:	US-412/SH-88/S4200RD	
Description:	OKLA. DEPT. OF TRANSPORTATION GRADE, DRAIN, AND SURFACE US-412/SH-88/S4200 RD: US-412, FR 0.2 MI W OF SH-88 EXT E. SH-88, FR 0.1 MI S OF US-412 EXT N. S4200, FR US-412 EXT S. PROJECT LENGTH = 4.629 MILES				
Contract Amount:	\$7,647,000.00	Funds Available:	\$8,954,794.12	Funds Paid(%) :	99%
Change Order	7	Original Time Used:	128%	Revised Time Used:	101%

Request approval of Change Order No. 7 for an additional appropriation in the amount of \$141,220.10.

Site Requirement: This change provides payment for the overrun of the unclassified excavation pay item required to remove unsuitable subgrade material encountered during construction; and for the overrun of the Class AA concrete pay item required to construct three junction boxes due to this work not being addressed in the contract. This change documents the underrun of the reinforcing steel pay item due to utilizing a precast concrete end section on Structure No. 24 in lieu of a headwall as planned.

OVERRUN ITEMS			\$141,385.10
Unclassified Excavation	14,078.51 CY	\$10.00 /CY	\$140,785.10
Class AA Concrete	1.00 CY	\$600.00 /CY	\$600.00
UNDERRUN ITEM			-\$165.00
Reinforcing Steel	-110.00 LB	\$1.50 /LB	-\$165.00

CHANGE ORDER ACTIONS						
CHANGE ORDER NO.	(+) Overrun (-) Underrun Amount (\$)	%	Appropriated Amount (\$)	%	Supplemental Agreement Amount(\$)	%
1	\$18,945.00	0.25%	\$18,945.00	0.25%	\$18,945.00	0.25%
2	\$85,348.00	1.12%	\$85,348.00	1.12%	\$85,348.00	1.12%
3	\$9,075.00	0.12%	\$9,075.00	0.12%	\$9,075.00	0.12%
4	\$628,541.33	8.22%	\$628,541.33	8.22%	\$227,900.00	2.98%
5	\$237,944.95	3.11%	\$237,944.95	3.11%	\$0.00	0.00%
6	\$327,939.84	4.29%	\$327,939.84	4.29%	\$0.00	0.00%
7	\$141,220.10	1.85%	\$141,220.10	1.85%	\$0.00	0.00%
TOTAL	\$1,449,014.22	18.95%	\$1,449,014.22	18.95%	\$341,268.00	4.46%

Change Orders with Cumulative Total Greater than \$75,000

January 11, 2021 Commission Meeting

Project Number:	STP-169B(134)PM		Contract ID:	180211	AGENDA ITEM
Contractor :	OVERLAND CORPORATION		Job Piece No.:	24412(04)	9S
Designer:	CEC CORPORATION		Highway No.:	SH-29	
Description:	GRADE, DRAIN, SURFACE, AND BRIDGE SH-29: FROM 2.4 MILES EAST OF THE US-81 JUNCTION, EXTEND EAST NEAR MARLOW. PROJECT LENGTH = 4.418 MILES				
Contract Amount:	\$12,462,832.15	Funds Available:	\$12,849,886.52	Funds Paid(%):	96%
Change Order	10	Original Time Used:	112%	Revised Time Used:	99%

Request approval of Change Order No. 10 for a supplemental agreement and an additional appropriation in the amount of \$1,030.38.

Site Requirement: This change provides payment for the overrun of the permanent traffic striping pay items due to the condition of the existing stripe encountered during construction. This change provides for the utilization of multi-polymer traffic stripe in lieu of plastic traffic stripe as planned due to concerns with using plastic on the centerline rumblestrip, and to keep the entire project consistent with the adjacent striping.

NEW ITEMS	\$40,428.05
Traffic Stripe (Multi-Poly.)(Arrows)	12.00 EA \$85.00 /EA \$1,020.00
Traffic Stripe (Multi-Poly.) (4" Wide)	89,429.00 LF \$0.40 /LF \$35,771.60
Traffic Stripe (Multi-Poly.) (12" Wide)	1,186.00 LF \$2.05 /LF \$2,431.30
Traffic Stripe (Multi-Poly.) (24" Wide)	118.50 LF \$10.17 /LF \$1,205.15
UNDERRUN ITEMS	-\$39,397.67
Traffic Stripe (Plastic) (4" Wide)	-89,389.00 LF \$0.40 /LF -\$35,755.60
Traffic Stripe (Plastic) (12" Wide)	-778.00 LF \$2.05 /LF -\$1,594.90
Traffic Stripe (Plastic) (24" Wide)	-101.00 LF \$10.17 /LF -\$1,027.17
Traffic Stripe (Plastic) (Arrows)	-12.00 EA \$85.00 /EA -\$1,020.00

CHANGE ORDER ACTIONS							
CHANGE ORDER NO.	(+) Overrun (-) Underrun Amount (\$)	%	Appropriated Amount (\$)	%	Supplemental Agreement Amount(\$)	%	
1	\$145,130.66	1.16%	\$145,130.66	1.16%	\$145,130.66	1.16%	
2	\$133,836.97	1.07%	\$133,836.97	1.07%	\$133,836.97	1.07%	
3	\$62,123.15	0.50%	\$62,123.15	0.50%	\$0.00	0.00%	
4	\$5,485.42	0.04%	\$5,485.42	0.04%	\$5,485.42	0.04%	
5	-\$5,582.79	-0.04%	\$0.00	0.00%	\$0.00	0.00%	
6	\$28,725.51	0.23%	\$28,725.51	0.23%	\$28,725.51	0.23%	
7	\$6,240.57	0.05%	\$6,240.57	0.05%	\$6,240.57	0.05%	
9	\$5,512.09	0.04%	\$5,512.09	0.04%	\$5,512.09	0.04%	
10	\$1,030.38	0.01%	\$1,030.38	0.01%	\$1,030.38	0.01%	
11	\$59,690.97	0.48%	\$59,690.97	0.48%	\$0.00	0.00%	
TOTAL	\$442,192.93	3.55%	\$447,775.72	3.59%	\$325,961.60	2.62%	

**Change Orders with Cumulative Total Greater than \$75,000
January 11, 2021 Commission Meeting**

Project Number:	STP-169B(134)PM		Contract ID:	180211	AGENDA ITEM 9T
Contractor :	OVERLAND CORPORATION		Job Piece No.:	24412(04)	
Designer:	CEC CORPORATION		Highway No.:	SH-29	
Description:	GRADE, DRAIN, SURFACE, AND BRIDGE SH-29; FROM 2.4 MILES EAST OF THE US-81 JUNCTION, EXTEND EAST NEAR MARLOW. PROJECT LENGTH = 4.418 MILES				
Contract Amount:	\$12,462,832.15	Funds Available:	\$12,849,886.52	Funds Paid(%):	96%
Change Order	11	Original Time Used:	112%	Revised Time Used:	99%

Request approval of Change Order No. 11 for an additional appropriation in the amount of \$59,690.97.

Site Requirement: This change provides payment for the overrun of the aggregate base pay item required to construct a suitable base course for the proposed pavement due to utilizing a thicker layer in lieu of stabilizing the subgrade in areas containing high soluble sulfates; and for the overrun of the Class C concrete, riprap, filter blanket, and rock filter dam pay items required to provide additional erosion control measures due to heavy rains causing severe erosion damage. This change documents the underrun of the vegetative mulching pay item due to the contractor utilizing permanent erosion control measures immediately in lieu of temporary mulching; and for the underrun of the fencing pay items due to the plans specifying fencing to be placed in some areas where landowners were paid to remove and replace their own fence.

OVERRUN ITEMS				\$295,771.51
Aggregate Base Type A	2,171.54 CY	\$51.10 /CY		\$110,965.69
Temporary Rock Filter Dam Type 1	265.13 CY	\$150.00 /CY		\$39,769.50
Type I-A Plain Riprap	938.70 TON	\$56.75 /TON		\$53,271.23
Type I-A Filter Blanket	131.31 TON	\$49.95 /TON		\$6,558.93
Class C Concrete	328.55 CY	\$259.34 /CY		\$85,206.16
UNDERRUN ITEMS				-\$236,080.54
Vegetative Mulching	-178.31 AC	\$250.00 /AC		-\$44,577.50
Stabilized Subgrade	-38,945.53 SY	\$3.75 /SY		-\$146,045.74
Fence-Style SWF (5 Barbed Wire)	-3,014.00 LF	\$4.85 /LF		-\$14,617.90
Fence-Style SWF (6 Barbed Wire)	-5,711.00 LF	\$5.40 /LF		-\$30,839.40

CHANGE ORDER ACTIONS						
CHANGE ORDER NO.	(+) Overrun (-) Underrun Amount (\$)	%	Appropriated Amount (\$)	%	Supplemental Agreement Amount(\$)	%
1	\$145,130.66	1.16%	\$145,130.66	1.16%	\$145,130.66	1.16%
2	\$133,836.97	1.07%	\$133,836.97	1.07%	\$133,836.97	1.07%
3	\$62,123.15	0.50%	\$62,123.15	0.50%	\$0.00	0.00%
4	\$5,485.42	0.04%	\$5,485.42	0.04%	\$5,485.42	0.04%
5	-\$5,582.79	-0.04%	\$0.00	0.00%	\$0.00	0.00%
6	\$28,725.51	0.23%	\$28,725.51	0.23%	\$28,725.51	0.23%
7	\$6,240.57	0.05%	\$6,240.57	0.05%	\$6,240.57	0.05%
9	\$5,512.09	0.04%	\$5,512.09	0.04%	\$5,512.09	0.04%
10	\$1,030.38	0.01%	\$1,030.38	0.01%	\$1,030.38	0.01%
11	\$59,690.97	0.48%	\$59,690.97	0.48%	\$0.00	0.00%
TOTAL	\$442,192.93	3.55%	\$447,775.72	3.59%	\$325,961.60	2.62%

**Change Orders with Cumulative Total Greater than \$75,000
January 11, 2021 Commission Meeting**

Project Number:	STP-271C(067)PM	Contract ID:	200035	AGENDA ITEM	9U	
Contractor :	K & R BUILDERS, INC.	Job Piece No.:	29514(04)	Highway No.:		US-70
Designer:	CHIANG, PATEL & YERBY, INC.	Div. / County.:	05 / TILLMAN			
Description:	BRIDGE AND APPROACHES US-70: OVER BOTTLE CREEK AND SUTTLE CREEK, 1.1 MILES AND 3.3 MILES EAST OF THE US-183 JUNCTION NEAR DAVIDSON. PROJECT LENGTH = 0.378 MILE					
Contract Amount:	\$3,199,743.58	Funds Available:	\$3,289,743.58	Funds Paid(%) :	98%	
Change Order	3	Original Time Used:	54%	Revised Time Used:	54%	

Request approval of Change Order No. 3 for a supplemental agreement and an additional appropriation in the amount of \$28,435.82.

Site Requirement: This change provides payment for the overrun of the solid slab sodding pay item required to provide adequate permanent erosion control on all disturbed areas due to additional disturbances being necessary throughout construction. This change imposes a unit price reduction for that portion of the solid slab sodding pay item in excess of 125% of the contract amount due to the significant overrun of this major item of work.

NEW ITEM			-\$1,564.20
Solid Slab Sodding (Unit Price Reduction)	2,085.60 SY	-\$0.75 /SY	-\$1,564.20
OVERRUN ITEM			\$30,000.02
Solid Slab Sodding	5,008.35 SY	\$5.99 /SY	\$30,000.02

CHANGE ORDER ACTIONS						
CHANGE ORDER NO.	(+) Overrun (-) Underrun Amount (\$)	%	Appropriated Amount (\$)	%	Supplemental Agreement Amount(\$)	%
1	\$0.00	0.00%	\$0.00	0.00%	\$0.00	0.00%
2	\$90,000.00	2.81%	\$90,000.00	2.81%	\$0.00	0.00%
3	\$28,435.82	0.89%	\$28,435.82	0.89%	\$0.00	0.00%
4	\$90,000.00	2.81%	\$90,000.00	2.81%	\$0.00	0.00%
TOTAL	\$208,435.82	6.51%	\$208,435.82	6.51%	\$0.00	0.00%

**Change Orders with Cumulative Total Greater than \$75,000
January 11, 2021 Commission Meeting**

Project Number:	STP-271C(067)PM	Contract ID:	200035	AGENDA ITEM
Contractor :	K & R BUILDERS, INC.	Job Piece No.:	29514(04)	9V
Designer:	CHIANG, PATEL & YERBY, INC.	Highway No.:	US-70	
Description:	BRIDGE AND APPROACHES US-70: OVER BOTTLE CREEK AND SUTTLE CREEK, 1.1 MILES AND 3.3 MILES EAST OF THE US-183 JUNCTION NEAR DAVIDSON. PROJECT LENGTH = 0.378 MILE			
Contract Amount:	\$3,199,743.58	Funds Available:	\$3,289,743.58	Funds Paid(%) : 98%
Change Order	4	Original Time Used:	54%	Revised Time Used: 54%

Request approval of Change Order No. 4 for an additional appropriation in the amount of \$90,000.00.

Site Requirement: This change provides payment for the early completion incentive earned by the contractor for achieving substantial completion on Milestone No. 2 prior to the time allowed in the contract.

NEW ITEM

\$90,000.00

Incentive for Early Completion (Milestone No. 2) (Bridge B) 1.00 LSUM \$90,000.00 /LSUM \$90,000.00

CHANGE ORDER ACTIONS						
CHANGE ORDER NO.	(+) Overrun (-) Underrun Amount (\$)	%	Appropriated Amount (\$)	%	Supplemental Agreement Amount(\$)	%
1	\$0.00	0.00%	\$0.00	0.00%	\$0.00	0.00%
2	\$90,000.00	2.81%	\$90,000.00	2.81%	\$0.00	0.00%
3	\$28,435.82	0.89%	\$28,435.82	0.89%	\$0.00	0.00%
4	\$90,000.00	2.81%	\$90,000.00	2.81%	\$0.00	0.00%
TOTAL	\$208,435.82	6.51%	\$208,435.82	6.51%	\$0.00	0.00%

**Change Orders with Cumulative Total Greater than \$75,000
January 11, 2021 Commission Meeting**

Project Number:	STP-272C(202)		Contract ID:	170141	AGENDA ITEM 9W
Contractor :	APAC-CENTRAL, INC.		Job Piece No.:	27937(04)	
Designer:	ATKINS		Highway No.:	US-64	
Description:	BRIDGE AND APPROACHES US-64: OVER SNAKE CREEK, 4.8 MILES SOUTH AND EAST OF THE SH-67 JUNCTION IN BIXBY. PROJECT LENGTH = 0.823 MILE.				
Contract Amount:	\$3,901,904.47	Funds Available:	\$3,915,613.27	Funds Paid(%) :	97%
Change Order	4	Original Time Used:	168%	Revised Time Used:	144%

Request approval of Change Order No. 4 for an additional appropriation in the amount of \$97,295.34.

Site Requirement: This change provides payment for the overrun of the aggregate base pay item required to remove and replace unsuitable subgrade material discovered during construction; and for the overrun of multiple traffic control pay items required to provide adequate direction to the traveling public during construction due to extending the contract time for this project. This change extends the contract time one hundred and seven days due to various unforeseen site conditions encountered by the contractor during construction.

OVERRUN ITEMS			\$97,295.34
Aggregate Base Type A	883.21 CY	\$37.00 /CY	\$32,678.77
Wing Barricades	1,192.00 SD	\$1.12 /SD	\$1,335.04
Warning Lights (Type A)	20,185.00 SD	\$1.12 /SD	\$22,607.20
Channelizer Cones	25,078.00 SD	\$0.06 /SD	\$1,504.68
Construction Signs 0 to 6.25 SF	3,379.00 SD	\$1.12 /SD	\$3,784.48
Construction Signs 6.26 SF to 15.99 SF	9,941.00 SD	\$0.17 /SD	\$1,689.97
Construction Signs 16.0 SF to 32.99 SF	10,305.00 SD	\$1.12 /SD	\$11,541.60
Construction Barricades (Type III)	5,705.00 SD	\$3.36 /SD	\$19,168.80
Port. Changeable Message Sign	533.00 SD	\$5.60 /SD	\$2,984.80

CHANGE ORDER ACTIONS						
CHANGE ORDER NO.	(+) Overrun (-) Underrun Amount (\$)	%	Appropriated Amount (\$)	%	Supplemental Agreement Amount(\$)	%
1	\$0.00	0.00%	\$0.00	0.00%	\$0.00	0.00%
2	\$6,567.63	0.17%	\$6,567.63	0.17%	\$0.00	0.00%
3	\$7,141.17	0.18%	\$7,141.17	0.18%	\$7,141.17	0.18%
4	\$97,295.34	2.49%	\$97,295.34	2.49%	\$0.00	0.00%
TOTAL	\$111,004.14	2.84%	\$111,004.14	2.84%	\$7,141.17	0.18%

Change Orders with Cumulative Total Greater than \$75,000

January 11, 2021 Commission Meeting

Project Number:	STP-272B(278)CI	Contract ID:	200085	AGENDA ITEM
Contractor :	CROSSLAND HEAVY CONTRACTORS INC.	Job Piece No.:	30703(04)	9X
Designer:	WALTER P. MOORE & ASSOCIATES	Highway No.:	CITY STREETS	
Description:	GRADE, DRAIN, SURFACE, AND TRAFFIC SIGNALS CITY STREETS (EAST 116TH STREET NORTH): AT THE INTERSECTION OF NORTH 129TH EAST AVENUE IN OWASSO. PROJECT LENGTH = 0.426 MILE			
Contract Amount:	\$2,887,000.00	Funds Available:	\$3,094,200.93	Funds Paid(%): 79%
Change Order	5	Original Time Used:	77%	Revised Time Used: 46%

Request approval of Change Order No. 5 for a supplemental agreement and an additional appropriation in the amount of \$378.47.

Site Requirement: This change provides payment for the inlet adjust to grade pay item required to lower Structure No. 6 after construction was completed due to the planned elevation being too high to drain from the South and East. This change provides for the utilization of a standard culvert end treatment to construct Structure No. 7 in lieu of the City of Owasso headwall as planned due to conflict with an existing waterline.

NEW ITEMS		\$5,723.47
Inlet Adjust to Grade	1.00 EA	\$2,596.67 /EA
Type D4 Culvert End Treatment	1.00 EA	\$3,126.80 /EA
UNDERRUN ITEM		-\$5,345.00
Headwall	-1.00 EA	\$5,345.00 /EA

CHANGE ORDER ACTIONS						
CHANGE ORDER NO.	(+) Overrun (-) Underrun Amount (\$)	%	Appropriated Amount (\$)	%	Supplemental Agreement Amount(\$)	%
1	\$47,245.00	1.64%	\$47,245.00	1.64%	\$47,245.00	1.64%
2	\$17,425.70	0.60%	\$17,425.70	0.60%	\$17,425.70	0.60%
3	\$34,366.90	1.19%	\$34,366.90	1.19%	\$34,366.90	1.19%
4	\$108,163.33	3.75%	\$108,163.33	3.75%	\$76,393.33	2.65%
5	\$378.47	0.01%	\$378.47	0.01%	\$378.47	0.01%
TOTAL	\$207,579.40	7.19%	\$207,579.40	7.19%	\$175,809.40	6.09%

Change Orders with Cumulative Total Greater than \$75,000

January 11, 2021 Commission Meeting

Project Number:	MC-009N(102)MD		Contract ID:	200219	AGENDA ITEM 9Y
Contractor :	CORNELL CONSTRUCTION COMPANY, INC.		Job Piece No.:	34770(04)	
Designer:	OKLA. DEPT. OF TRANSPORTATION		Highway No.:	US-183	
Description:	RESURFACE (ASPHALT) US-183: FROM 0.45 MILES NORTH OF THE SH-9 JUNCTION, EXTEND NORTH NEAR HOBART. PROJECT LENGTH = 13.260 MILES				
Contract Amount:	\$1,502,905.42	Funds Available:	\$1,502,905.42	Funds Paid(%) :	100%
Change Order	1	Original Time Used:	37%	Revised Time Used:	37%

Request approval of Change Order No. 1 for an additional appropriation in the amount of \$142,312.03.

Site Requirement: This change provides payment for the overrun of the ultra-thin bonded wearing course pay item required to complete this project as specified due to the inconsistent cross slope throughout the project.

OVERRUN ITEM			\$142,312.03
Ultra-Thin Bonded Wearing Course, Type C	1,409.03 TON	\$101.00 /TON	\$142,312.03

CHANGE ORDER ACTIONS						
CHANGE ORDER NO.	(+) Overrun (-) Underrun Amount (\$)	%	Appropriated Amount (\$)	%	Supplemental Agreement Amount(\$)	%
1	\$142,312.03	9.47%	\$142,312.03	9.47%	\$0.00	0.00%
TOTAL	\$142,312.03	9.47%	\$142,312.03	9.47%	\$0.00	0.00%

STATEMENT OF OVERRUNS AND UNDERRUNS
ON PROJECTS APPROVED BY THE CONSTRUCTION DIVISION
FOR FINAL PAYMENT THE MONTH OF NOVEMBER, 2020

Project	County Name	Contract Amount	Amount Paid	Overrun	Underrun	Percent Overrun	Explanation of Overrun or 10% or more Underrun
CIRB-165C(09)RB	ROGER MILLS	\$6,283,092.30	\$6,928,340.44	\$645,248.14	\$0.00	10.27%	Overrun borrow and bridge items
CIRB-212C(05)RB	CHOCTAW	\$1,347,014.50	\$1,300,700.37	\$0.00	(\$46,314.13)	0.00%	
CIRB-226C(08)RB	GRADY	\$925,000.03	\$1,057,534.53	\$132,534.50	\$0.00	14.33%	Overrun reinforced steel and added pumping and siphon system
HSPG-212N(04)AD	CHOCTAW	\$656,225.95	\$679,154.17	\$22,928.22	\$0.00	3.49%	Overrun sidewalk
HSPG-260N(06)AD	PAYNE	\$498,481.03	\$574,779.86	\$76,298.83	\$0.00	15.31%	Overrun sidewalk and curbs
MC-272N(288)	TULSA	\$83,953.64	\$40,863.96	\$0.00	(\$43,089.68)	0.00%	Overrun bridge repair
NHPP-008N(10)RW	TEXAS	\$63,500.00	\$62,425.00	\$0.00	(\$1,075.00)	0.00%	
NHPP-208N(07)3P	CADDO	\$1,257,109.52	\$1,223,562.56	\$0.00	(\$33,546.96)	0.00%	
NHPP-270N(01)7FP	TEXAS	\$8,539,125.29	\$8,944,672.21	\$405,546.92	\$0.00	4.75%	Overrun asphalt removal, cement and asphalt binder
SBR-219N(06)SB	CREEK	\$1,788,000.00	\$1,861,686.83	\$73,686.83	\$0.00	4.12%	Overrun riprap, filter blanket and traffic control
SBR-267C(07)SB	SEMINOLE	\$3,447,514.16	\$3,864,686.86	\$417,172.70	\$0.00	12.10%	Overrun bridge items and traffic control
SBR-272A(16)SB	TULSA	\$1,528,721.91	\$1,950,320.66	\$421,598.75	\$0.00	27.58%	Overrun bridge items and paid negotiated settlement
SBR-272N(25)SB	TULSA	\$1,241,307.68	\$1,130,357.65	\$0.00	(\$110,950.03)	0.00%	
SSP-019N(13)PM	MAJOR	\$109,649.37	\$155,245.98	\$45,596.61	\$0.00	41.58%	Overrun paving
SSP-125B(12)SS	GARVIN	\$5,971,477.23	\$5,851,681.14	\$0.00	(\$119,796.09)	0.00%	
SSR-204B(03)SR	BEAVER	\$1,428,352.50	\$1,379,475.82	\$0.00	(\$48,876.68)	0.00%	
SSR-210C(07)SR	CARTER	\$1,768,631.50	\$1,553,176.29	\$0.00	(\$215,455.21)	0.00%	Underrun paving
SSR-225C(083)(084)SR	GARVIN	\$2,691,970.86	\$2,523,695.65	\$0.00	(\$168,275.21)	0.00%	
SSR-236N(065)SR	KAY	\$1,687,163.50	\$1,695,008.23	\$7,844.73	\$0.00	0.46%	Overrun removal of asphalt
STP-202C(033)	ALFALFA	\$2,388,858.65	\$2,381,599.07	\$0.00	(\$7,259.58)	0.00%	
STP-213C(02)CI	CIMARRON	\$2,137,444.60	\$1,971,711.87	\$0.00	(\$165,732.73)	0.00%	
STP-216C(07)SS	COMANCHE	\$2,834,368.61	\$2,781,976.09	\$0.00	(\$52,392.52)	0.00%	
STP-225C(06)SS	GARVIN	\$1,315,000.00	\$1,452,070.10	\$137,070.10	\$0.00	10.42%	Overrun excavation and erosion control
STP-225C(07)PM	GARVIN	\$1,526,670.86	\$1,576,218.27	\$49,547.41	\$0.00	3.25%	Overrun borrow and bridge items
STP-228D(01)CI	GREER	\$300,834.56	\$283,487.88	\$0.00	(\$17,346.68)	0.00%	
STP-238C(03)PM	KIOWA	\$971,654.30	\$929,843.61	\$0.00	(\$41,810.69)	0.00%	
STP-271D(05)CI	TILLMAN	\$974,723.30	\$1,123,604.80	\$148,881.50	\$0.00	15.27%	Raised bridge and widen channel
STP-275C(04)PM	WASHITA	\$2,270,084.19	\$2,533,272.02	\$263,187.83	\$0.00	11.59%	Paid early completion milestone and overrun erosion control
STP-275C(04)PM	WASHITA	\$2,450,354.55	\$2,468,850.99	\$18,496.44	\$0.00	0.75%	Storm damage repair
TAP-263D(05)TP	SEMINOLE	\$280,698.00	\$274,939.30	\$0.00	(\$5,758.70)	0.00%	
Grand Total		\$58,766,982.59	\$60,554,942.21	\$2,865,639.51	(\$1,077,679.89)		

THESE 30 PROJECTS RECEIVED FINAL APPROVAL BY THE CONSTRUCTION DIVISION DURING THE MONTH OF NOVEMBER, 2020
THE ORIGINAL AMOUNT; OVERRUNS, UNDERRUNS AND THE AMOUNT PAID ON THE FINAL ESTIMATE ARE SHOWN

FOR PRESENTATION AT THE COMMISSION MEETING OF JANUARY 11, 2021

AGENDA ITEM NO. 10

SUBJECT: PROPOSED BID OPENINGS

COUNTY: STATEWIDE

This item consists of the final March 2021 bid opening for \$119,649,850, the tentative April 2021 bid opening for \$95,191,516, and the tentative May 2021 bid opening for \$87,675,120.

The Department recommends Commission approval of the final March 2021, tentative April 2021 and the tentative May 2021 bid openings.

PROJECTS AWARDED			PROJECTS AWARDED		
LETTING MONTH		TOTAL	LETTING MONTH		TOTAL
DECEMBER	2018	\$ -	DECEMBER	2019	\$ -
JANUARY	2019	\$ 72,327,830	JANUARY	2020	\$ 152,348,707
FEBRUARY	2019	\$ 65,671,551	FEBRUARY	2020	\$ 107,297,269
MARCH	2019	\$ 38,083,890	MARCH	2020	\$ 63,688,215
APRIL	2019	\$ 100,665,648	APRIL	2020	\$ 88,401,664
MAY	2019	\$ 146,374,234	MAY	2020	\$ 166,889,675
JUNE	2019	\$ 101,798,131	JUNE	2020	\$ 44,395,646
JULY	2019	\$ 198,338,808	JULY	2020	\$ 78,150,113
AUGUST	2019	\$ 47,460,042	AUGUST	2020	\$ 152,409,740
SEPTEMBER	2019	\$ 30,450,469	SEPTEMBER	2020	\$ 146,416,153
OCTOBER	2019	\$ 86,317,051	OCTOBER	2020	\$ 57,463,903
NOVEMBER	2019	\$ 100,182,781	NOVEMBER	2020	\$ 96,382,071
TOTAL		\$ 987,670,435	TOTAL		\$ 1,153,843,156

JobPiece	CD	Highway	MILES	Adv Con	Federal	State	Other	Total
35090 (04)	5	US270	6.250	0.00	4,750,000.00	0.00	0.00	4,750,000.00
BLAINE		RESURFACE US-270: BEGIN 0.73 MI EAST OF US-270/SH-33 JCT, EXTEND EAST 6.25 MI						
		NHPP -017N (274)	3P					
24094 (04)	7	SH009	5.740	0.00	5,288,121.35	10,604,905.33	0.00	15,893,026.68
CADDO		GRADE, DRAIN, BRIDGE & SURFACE SH-9: RECONSTRUCT ON OFFSET AND EXISTING ALIGN. FROM 5.64 MI WEST OF US-62 EXT EAST 5.74 MILES THRU US-62 INTERSECTION.						
		STP -108B (166)	PM					
31366 (04)	4	US281	4.400	0.00	1,070,030.00	0.00	0.00	1,070,030.00
CANADIAN		RESURFACE US-281 SPUR FROM 300 FEET NORTH OF THE JUNCTION OF US-281, SOUTHEAST 4.21 MILES						
		NHPP -209N (082)	3P					
33282 (04)	4	ENHAN	0.000	0.00	515,960.00	0.00	251,675.00 (B)	767,635.00
CANADIAN		PEDESTRIAN / BIKE IMPROVEMENTS YUKON: GARTH BROOKS TRAIL						
		TAP -209E (079)	AG					
33455 (04)	7	US177	5.880	0.00	1,422,153.00	0.00	0.00	1,422,153.00
CARTER		RESURFACE US-177: SH-199 NORTH TO KEMP CREEK APPROX. 1.5 MILES SOUTH OF SH-53						
		STP -210B (078)	3P					
33407 (04)	6	US287	6.890	0.00	1,800,000.00	0.00	0.00	1,800,000.00
CIMARRON		RESURFACE US-287: FROM 7 MILES NORTH OF TEXAS STATE LINE, EXTEND NORTH 6.84 MILES						
		NHPP -032N (007)	3P					
17020 (08)	4	CT ST	0.510	0.00	1,000,000.00	0.00	200,000.00 (B)	1,200,000.00
GARFIELD		GRADE, DRAIN & SURFACE ENID: N.CLEVELAND ST FROM WILLOW RD SOUTH 1/2 MILE TO S. SIDE OF RR TRACKS						
		STP -224C (069)	UR					
20970 (08)	3	IS035	3.210	0.00	20,794,586.04	0.00	0.00	20,794,586.04
GARVIN		GRADE, DRAIN & SURFACE I-35: FROM SH-19, NORTH 3.21 MI						
		NHPPI -3500- (086)	PM					
35205 (04)	3	SH019	2.400	0.00	0.00	396,902.38	0.00	396,902.38
GARVIN		RESURFACE SH-19: RESURFACE BEGIN AT GRADY COUNTY LINE EXTEND EAST 2.4 MILES						
		MC -225C (092)	MD					
31980 (04)	4	COBRGE	0.040	0.00	800,000.00	0.00	200,000.00 (A)	1,000,000.00
KAY		BRIDGE & APPROACHES BRIDGE AND APPROACHES ON EW-23 OVER DEER CREEK, 0.5 MILES WEST, 1.0 MILES SOUTH AND 0.3 MILES WEST OF JCT. I-35/US-60 CN 135						
		STP -236D (086)	CI					
33340 (04)	3	SH018	6.280	0.00	1,190,625.00	0.00	0.00	1,190,625.00
LINCOLN		RESURFACE SH-18: FROM SH-62 JCT, EXTEND NORTH 6.28 MI						
		STP -241C (071)	3P					
33341 (04)	3	SH018	6.980	0.00	1,321,875.00	0.00	0.00	1,321,875.00
LINCOLN		RESURFACE SH-18: BEGIN 6.35 MI NORTH OF SH-62 JCT, EXTEND NORTH 6.98 MI						
		STP -241C (076)	3P					
29459 (04)	3	SH059	0.020	0.00	3,060,228.48	765,056.60	0.00	3,825,285.08
MCCLAIN		GRADE, DRAIN, BRIDGE & SURFACE SH-59 OVER CRINER CREEK, 5.03 MI SOUTH OF SH-39						
		STP -244C (072)	PM					
33392 (04)	2	US259	5.230	0.00	2,800,000.00	0.00	0.00	2,800,000.00
MCCURTAIN		RESURFACE US-259/US-70: BEGIN 0.07 NORTH OF US-70/US-259/SH-3 JCT. AND EXTEND NORTH 5.24 MI						
		NHPP -016N (014)	3P					

JobPiece	CD	Highway	MILES	Adv Con	Federal	State	Other	Total
34268 (04)	2	US070	2.400	0.00	1,000,000.00	0.00	0.00	1,000,000.00
MCCURTAIN		RESURFACE US-259/US-70: BEGIN 5.31 MI NORTH OF US-70/US-259/SH-3 JCT, EXTEND NORTH 2.40 MI WITH EXCEPTION NHPP -016N (015) 3P						
31072 (04)	8	SH010	0.200	0.00	0.00	1,013,400.00	0.00	1,013,400.00
NOWATA		BRIDGE REHABILITATION SH 10 REHAB BRIDGE OVER VERDIGRIS RIVER, 10.6 MI W CRAIG CO SBR -253C (059) SB						
29689 (04)	8	SH125	0.770	0.00	6,999,908.00	0.00	0.00	6,999,908.00
OTTAWA		GRADE, DRAIN, BRIDGE & SURFACE SH-125 OVER I-44: (WILL ROGERS TURNPIKE), 6.8 MILES NORTH OF US-60 STP -258B (079) PM						
29860 (04)	4	US177	1.000	0.00	6,199,448.46	6,199,448.46	0.00	12,398,896.92
PAYNE		WIDEN & RESURFACE US-177: FROM SH-51 NORTH 3 MILES TO LAKEVIEW ROAD IN STILLWATER. INCLUDES WIDENING FOR FIVE LANE SECTION FROM MCELROY TO LAKEVIEW STP -260B (056) PM						
24331 (04)	2	SH031	2.300	0.00	4,435,760.50	4,435,760.50	0.00	8,871,521.00
PITTSBURG		GRADE, DRAIN, BRIDGE & SURFACE SH-31 FROM 1.13 MI EAST OF MCALESTER, EAST 2.30 MI STP -161C (205) PM						
33755 (04)	3	SH048	2.800	0.00	0.00	426,629.16	0.00	426,629.16
PONTOCOC		RESURFACE SH-48- BEGIN 9.0 MI NORTH OF COAL C/L, EXT NORTH 2.8 MI MC -262C (063) MD						
29400 (04)	8	COBRGE	0.140	0.00	0.00	0.00	3,265,000.00 (A)	3,265,000.00
ROGERS		BRIDGE & APPROACHES CO BR (137) ON EW 590 AKA OLD HWY 33 BRIDGE OVER SH 88 AND UP RR APPX 1.4 MI NW OF INOLA CIRB -266D (061) RB						
33370 (04)	8	US412	4.950	0.00	2,150,000.00	0.00	0.00	2,150,000.00
ROGERS		RESURFACE US-412: FROM 5.47 MI WEST OF THE JCT WITH SH-88, EXTEND EAST 4.95 MI EB & WB NHPP -019N (144) 3P						
33833 (04)	1	SH010	2.840	0.00	790,000.00	0.00	0.00	790,000.00
SEQUOYAH		RESURFACE SH-10: BEGIN 1.30 MI NORTH OF I-40 JCT, EXT NORTH 2.84 MI TO SH-100 JCT STP -268C (074) 3P						
33454 (04)	7	SH007	7.990	0.00	3,175,161.00	0.00	0.00	3,175,161.00
STEPHENS		RESURFACE SH-7: FROM MM 7.62 EXTEND EAST 7.99 MILES NHPP -269N (077) 3P						
28899 (04)	8	IS444	1.150	0.00	18,827,215.44	0.00	0.00	18,827,215.44
TULSA		PAVEMENT REHABILITATION I-444 FROM SH 51 INTERCHANGE NORTH TO INDEPENDENCE (EAST LEG OF IDL) NHPPI -4440- (009) PM						
32729 (04)	8	US075	0.020	0.00	0.00	750,000.00	0.00	750,000.00
TULSA		BRIDGE REHABILITATION US-75: BRIDGE REHAB OVER APACHE AVE, 2.8 MI NORTH OF JCT. I-244 NB SBR -014N (111) SB						
32735 (04)	8	US075	0.200	0.00	0.00	500,000.00	0.00	500,000.00
TULSA		BRIDGE REHABILITATION US-75: ARCHER ST; BRIDGE REHAB OVER US-75, 2.8 MI NORTH OF JCT I-244 SBR -014N (112) SB						
33811 (04)	8	SH051	0.400	0.00	0.00	750,000.00	0.00	750,000.00
TULSA		BRIDGE REHABILITATION SH-51: BRIDGE REHAB OVER ARKANSAS RIVER SBR -272N (335) SB						

JobPiece	CD	Highway	MILES	Adv	Con	Federal	State	Other	Total
34312(04)	8	IS244	1.000	0.00		0.00	500,000.00	0.00	500,000.00
		BRIDGE REHABILITATION							
TULSA		I-244 EB MINGO CRK							
	SBR	-2440	(032)	SB					
29 PROJECTS		GRAND-TOTALS		0.00		89,391,072.27	26,342,102.43	3,916,675.00	119,649,849.70

OTHER FUNDING CATEGORIES:

- (A) CO. IMPROVE. ROAD & BRIDGE
- (B) LOCAL /CITY MATCHING FUNDS

PREPARED BY PROGRAMS DIVISION

Job/Piece	CD	Highway	MILES	Adv	Con	Federal	State	Other	Total
33405 (04)	6	US083	6.000		0.00	2,100,000.00	0.00	0.00	2,100,000.00
BEAVER		RESURFACE							
		US-83: BEGIN 6.25 MILES NORTH OF SH-3 JCT. EXTEND NORTH 6 MILES.							
		STP -204B (036)	3P						
33405 (05)	6	US083	4.980		0.00	1,800,000.00	0.00	0.00	1,800,000.00
BEAVER		RESURFACE							
		US-83: BEGIN 12.25 MILES NORTH OF SH-3 JCT. EXTEND NORTH 5.0 MILES							
		STP -204B (037)	3P						
31365 (04)	4	US081	4.800		0.00	2,750,000.00	0.00	0.00	2,750,000.00
CANADIAN		RESURFACE							
		US-81 FROM RR BRIDGE NORTH OF EL RENO, NORTH 4.79 MILES TO 0.15 MILE NORTH OF MEMORIAL RD.							
		NHPP -011N (113)	3P						
28500 (04)	1	COBRGE	0.040		0.00	300,000.00	0.00	500,000.00 (A)	800,000.00
CHEROKEE		BRIDGE & APPROACHES							
		REPLACE BR. OVER DOUBLE SPRINGS CREEK, 0.1 MI. S.E. OF TERISITA, 13 MI. N. OF TALEQUAH							
		STP -211C (042)	CI						
33369 (04)	8	US059	7.620		0.00	1,410,000.00	0.00	0.00	1,410,000.00
CRAIG		RESURFACE							
		US-59: FROM 7.67 MI SOUTH OF THE KANSAS STATE LINE, EXTEND NORTH 7.67 MI							
		STP -218B (096)	3P						
33368 (04)	8	SH066	3.320		0.00	1,650,000.00	0.00	0.00	1,650,000.00
CREEK		RESURFACE							
		SH-66: FROM 3.63 MI WEST OF THE JCT WITH I-44, EXTEND EAST 3.32 MI							
		NHPP -219N (084)	3P						
24134 (11)	5		0.000		0.00	87,199.80	21,799.95	0.00	108,999.75
CUSTER		BRIDGE WATER PROOF SEAL							
		DIVISION 5 SILANE TREATMENT (WATERPROOF SEAL, SITES TO DETERMINED)							
		STP -220E (011)	PM						
31065 (04)	6	US270	5.000		0.00	3,280,000.00	820,000.00	0.00	4,100,000.00
HARPER		RESURFACE							
		US-270/US-412: BEGIN 2.0 MILES E. OF JCT. US-183, EXTEND E. 5.0 MILES							
		NHPP -017N (266)	PM						
32946 (04)	7	SH089	0.350		0.00	187,000.00	0.00	0.00	187,000.00
JEFFERSON		A.D.A. PROJECTS FOR COMPLIANCE							
		SH-89: BEGIN 0.17 MI. NORTH OF US-70, EXT. NORTH 0.35 MI. (RINGLING)							
		STP -234C (053)	AD						
33884 (04)	7	US070	8.000		0.00	1,486,919.00	0.00	0.00	1,486,919.00
JEFFERSON		RESURFACE							
		US-70: FROM 7.98 MI. EAST OF US-70/SH-81 JCT., EXTEND EAST 8 MILES							
		STP -234B (058)	3P						
31052 (04)	3	SH048	0.200		0.00	645,192.00	161,298.00	0.00	806,490.00
JOHNSTON		BRIDGE & APPROACHES							
		SH-48: OVER SANDY CREEK, 0.60 MI NORTH OF JCT SH-7							
		STP -235C (055)	PM						
29864 (04)	4	COBRGE	0.020		0.00	0.00	0.00	500,000.00 (A)	500,000.00
KAY		BRIDGE & APPROACHES							
		BR AND APP ON NS-312 OVER SAND CREEK, 6.0 MILES WEST, 2.4 MILES NORTH OF BRAMAN CN 167 CT BEAMS							
		CIRB -236D (022)	RB						
27947 (04)	3	SH066	3.250		0.00	6,370,960.00	1,592,740.00	0.00	7,963,700.00
LINCOLN		WIDEN & RESURFACE							
		SH-66: FROM OKLAHOMA C/L, EAST 3.25 MI TO SH-102 AT WELLSTON							
		STP -241C (073)	PM						
27976 (04)	4	SH051	1.740		0.00	9,479,353.68	9,479,353.68	0.00	18,958,707.36
LOGAN		BRIDGE & APPROACHES							
		SH 51: OVER E. BEAVER CR. 0.3 MIS. W. OF THE US 77 JCT.							
		STP -242C (079)	PM						

JobPiece	CD	Highway	MILES	Adv Con	Federal	State	Other	Total
18859 (04)	2	US070	3.720	0.00	5,081,413.00	11,310,241.00	0.00	16,391,654.00
MCCURTAIN		GRADE, DRAIN & SURFACE US-70: BEGIN 3.08 MILES EAST OF CHOCTAW COUNTY LINE & EXTEND EAST 3.72 MILES						
		NHPP	-022N (102)	SS				
18859 (10)	2	US070	0.830	0.00	4,156,313.60	1,039,078.40	0.00	5,195,392.00
MCCURTAIN		GRADE, DRAIN, BRIDGE & SURFACE US-70: BEGIN 2.25 MILES EAST OF CHOCTAW COUNTY LINE & EXTEND EAST 0.83 MILES						
		NHPP	-022N (225)	PM				
33440 (04)	1	IS040	0.200	0.00	0.00	3,889,229.00	0.00	3,889,229.00
MCINTOSH		BRIDGE REHABILITATION I-40: US-266 UNDER, 0.60 WEST OF MUSKOGEE C/L						
		SBR	-4000 (107)	SB				
26288 (04)	1	US266	0.200	0.00	0.00	1,500,000.00	0.00	1,500,000.00
MUSKOGEE		WIDEN, RESURFACE & BRIDGE US-266: OVER BENNETT CREEK, 1.2 MI. EAST OF MCINTOSH C/L						
		SSP	-251C (116)	PM				
28516 (04)	1	COBRGE	0.040	0.00	85,000.00	0.00	1,500,000.00 (A)	1,585,000.00
MUSKOGEE		BRIDGE & APPROACHES REHAB BR OVER COODY CREEK, 5.0 MI. E. OF NS434 RD. (HANCOCK)						
		STP	-251B (125)	CI				
31215 (04)	4	COBRGE	0.040	0.00	480,000.00	0.00	120,000.00 (A)	600,000.00
NOBLE		BRIDGE & APPROACHES BRIDGE & APPROACHES ON NS-317 OVER STILLWATER CREEK, 6.0 MILES SOUTH AND 1.0 MILES EAST OF JCT US-77/SH-164 CN 129						
		STP	-252D (048)	CI				
33342 (04)	3	SH056	3.560	0.00	900,000.00	0.00	0.00	900,000.00
OKFUSKEE		RESURFACE SH-56: FROM SEMINOLE C/L, EXTEND EAST 3.56 MI TO SH-48 JCT						
		STP	-254C (050)	3P				
32882 (09)	4	SH152	6.940	0.00	4,400,000.00	1,100,000.00	0.00	5,500,000.00
OKLAHOMA		GRADE, DRAIN & SURFACE SH-152: FROM THE TURNPIKE EAST APPROX. 6.1 MILES TO MERIDIAN AVE IN OKC EXTENDING EB AUX. LN. FROM COUNCIL RD.						
		NHPP	-255N (540)	PM				
32882 (12)	4	SH152	0.100	0.00	1,500,000.00	0.00	0.00	1,500,000.00
OKLAHOMA		BRIDGE REHABILITATION SH-152: EB & WB OVER NEWCASTLE ROAD						
		NHPP	-255N (535)	PM				
33776 (04)	4	IS040	3.000	0.00	1,135,424.00	0.00	0.00	1,135,424.00
OKLAHOMA		RESURFACE I-40 FROM MACARTHUR AVE TO MORGAN ROAD (BRIDGES EXCLUDED) IN OKC						
		NHPPI	-4000- (081)	3P				
28262 (05)	8	SH011	0.020	0.00	520,150.00	119,850.03	0.00	640,000.03
OSAGE		BRIDGE REHABILITATION SH-11: OVER RED EAGLE BRANCH CREEK, 9.2 MILES EAST OF JCT. SH-99						
		STP	-257B (081)	PM				
32783 (04)	2	US270	2.000	0.00	0.00	1,550,000.00	0.00	1,550,000.00
PITTSBURG		RESURFACE US-270: BEGIN AT US-69 JCT, EXTEND EAST 2.0 MI						
		STP	-261N (096)	3P				
22973 (19)	3		0.000	0.00	0.00	150,000.00	0.00	150,000.00
PONTOTOC		BRIDGE WATER PROOF SEAL DIVISION 3: BRIDGE WATER PROOFING SEAL (SILANE)						
		STP	-262C (063)	PM				
23285 (12)	3		0.000	0.00	0.00	600,000.00	0.00	600,000.00
PONTOTOC		JOINT SEAL/REPAIR DIVISION 3: BRIDGE JOINT SEAL/REPAIR PROJECTS						
		STP	-262C (064)	PM				

JobPiece	CD	Highway	MILES	Adv Con	Federal	State	Other	Total
28204 (04)	3	SH009A	6.830	0.00	900,000.00	0.00	0.00	900,000.00
RESURFACE								
POTTAWATOMIE SH-9A: FROM SH-59, EXTEND NORTH 6.83 MI								
	STP	-263C	(074)	3P				
28204 (05)	3	SH009A	3.390	0.00	633,000.00	0.00	0.00	633,000.00
RESURFACE								
POTTAWATOMIE SH-9A: FROM 6.83 MI NORTH OF SH-59, EXTEND NORTH 3.39 MI								
	STP	-263C	(075)	3P				
23145 (12)	2		0.000	0.00	0.00	800,000.00	0.00	800,000.00
BRIDGE PAINTING								
PUSHMATAHA DIVISION 2: MAINTENANCE - VARIOUS LOCATIONS								
(BRIDGE PAINTING)								
	SSP	-264F	(080)	PM				
30078 (05)	7		0.000	0.00	0.00	80,000.01	0.00	80,000.01
BRIDGE WATER PROOF SEAL								
STEPHENS DIVISION 7: BRIDGE WATER PROOF SEAL								
	STP	-269E	(083)	PM				
29652 (04)	6	SH003	6.520	0.00	2,450,000.00	2,450,000.00	0.00	4,900,000.00
RESURFACE								
TEXAS SH-3: FROM 8.2 MILES EAST OF THE SH-136 JCT., EXTEND EAST 6.52 MILES								
	NHPP	-017N	(267)	PM				
33446 (04)	1	SH051	3.920	0.00	2,120,000.00	0.00	0.00	2,120,000.00
RESURFACE								
WAGONER SH-51: BEGIN AT EAST END OF VERDIGRIS RIVER BRIDGES, EXTEND EAST 3.92 MI								
	STP	-273B	(064)	3P				
34 PROJECTS			GRAND-TOTALS	0.00	55,907,925.08	36,663,590.07	2,620,000.00	95,191,515.15

OTHER FUNDING CATEGORIES:

(A) CO. IMPROVE. ROAD & BRIDGE

PREPARED BY PROGRAMS DIVISION

JobPiece	CD	Highway	MILES	Adv Con	Federal	State	Other	Total
29511 (04)	5	SH034	0.500	0.00	0.00	5,048,164.00	0.00	5,048,164.00
BECKHAM		BRIDGE & APPROACHES SH-34: AT FARMRAIL RAILROAD AND RCB AT UNNAMED CK 5.5 MILES NORTH OF SH-152 SSP -205C (090) PM						
24088 (04)	2	SH078	4.170	0.00	7,381,398.40	1,845,349.60	0.00	9,226,748.00
BRYAN		GRADE, DRAIN, BRIDGE & SURFACE SH-78: FROM ACHILLE NORTH 4.17 MI STP -207C (105) PM						
29684 (04)	8	SH016	0.100	0.00	354,293.61	88,573.40	0.00	442,867.01
CREEK		BRIDGE & APPROACHES SH-16: OVER WEST SPRING CREEK, 6.4 MILES SOUTH OF THE JCT. SH-33 STP -219C (077) PM						
26497 (04)	6	SH015	2.700	0.00	1,255,000.00	5,020,000.00	0.00	6,275,000.00
ELLIS		GRADE, DRAIN, BRIDGE & SURFACE SH-15: FROM 5.8 MILES EAST OF US-283 JCT., EXTEND EAST APPROX 2.7 MILES SSP -019N (118) SS						
24868 (09)	4	CO RD	1.030	0.00	0.00	0.00	1,000,000.00 (A)	1,000,000.00
GARFIELD		RESURFACE CO. RD. EW-40 (2416C) FROM SH-15 TO NS-305 PHASE III CIRB -224C (062) RB						
29876 (04)	4	COBRGE	0.050	0.00	0.00	0.00	800,000.00 (A)	800,000.00
GARFIELD		BRIDGE & APPROACHES BR AND APP ON EW-46 OVER TURKEY CREEK, 0.3 MILES EAST, 3.3 MILES NORTH AND 1.3 MILES EAST OF DRUMMOND CN 152 CT BEAMS CIRB -224D (015) RB						
32843 (08)	4	CO RD	1.000	0.00	1,168,831.00	0.00	200,000.00 (A)	1,368,831.00
GARFIELD		GRADE, DRAIN & SURFACE GRADE, DRAIN, & SURFACE ON SOUTHGATE START 16TH ST. EXTEND 1.0 MILE TO 30TH ST. STP -224B (085) CI						
26973 (08)	6		0.000	0.00	80,000.01	19,999.99	0.00	100,000.00
HARPER		BRIDGE PAINTING DIVISION 6 BRIDGE PAINT STP -230F (039) SS						
26974 (08)	6		0.000	0.00	40,000.00	10,000.00	0.00	50,000.00
HARPER		JOINT SEAL/REPAIR DIVISION 6 BRIDGE JOINT STP -230F (040) SS						
26975 (08)	6		0.000	0.00	40,000.00	10,000.00	0.00	50,000.00
HARPER		BRIDGE WATER PROOF SEAL DIVISION 6 BRIDGE SILANE (WATERPROOF SEAL) STP -230F (041) SS						
28664 (04)	6	CO RD	3.130	0.00	1,000.00	0.00	3,000,000.00 (A)	3,001,000.00
HARPER		GRADE, DRAIN, BRIDGE & SURFACE CO RD ON NS-198/199, BEGIN AT EW-27 AND EXTEND NORTH 3.0 MILES PHASE I STP -230C (043) RB						
29831 (04)	6	COBRGE	0.070	0.00	0.00	0.00	800,000.00 (A)	800,000.00
HARPER		BRIDGE & APPROACHES BR & APP ON NS-181 LOW WATER XING OVER REDOUBT CREEK, 8.0 MILES NORTH, 10.0 MILES WEST & .10 MILES SOUTH OF BUFFALO CT BEAMS CIRB -230D (044) RB						
30470 (04)	6	COBRGE	0.090	0.00	0.00	0.00	800,000.00 (A)	800,000.00
HARPER		BRIDGE & APPROACHES BRIDGE & APPROACHES ON NS-195 OVER SAND CREEK, 4.5 MILES EAST & 8.1 MILES SOUTH OF BUFFALO CT BEAMS CIRB -230C (045) RB						
30387 (04)	3	US270	1.000	0.00	1,648,000.00	412,000.00	0.00	2,060,000.00
HUGHES		GRADE, DRAIN & SURFACE US-270: UNDER UNION PACIFIC RR, 3.2 MI EAST OF US-75 STP -232B (063) PM						

Job/Piece	CD	Highway	MILES	Adv Con	Federal	State	Other	Total
31324 (05)	3	US177	5.000	0.00	2,541,962.40	635,490.60	0.00	3,177,453.00
LINCOLN		RIGHT OF WAY US-177: FROM 1 MI SOUTH OF SH-40A, EXTEND NORTH APPROX. 5.0 MI TO JCT SH-105 (RW FOR 31324 (04)) STP -241B (078) RW						
23264 (07)	3	SH076	5.000	0.00	7,209,173.00	1,802,293.00	0.00	9,011,466.00
MCCLAIN		GRADE, DRAIN & SURFACE SH-76: FROM 3.0 MI NORTH OF SH-19, NORTH 5.0 MI SSP -244C (074) PM						
28662 (04)	6	CO RD	5.070	0.00	0.00	0.00	4,500,000.00 (A)	4,500,000.00
MAJOR		RESURFACE CO RD ON EW-57, BEGIN AT NS-233 AND EXTEND SOUTH 1.0 MILE, THEN ON EW-58 EXTEND 4.0 MILES EAST CIRB -247C (036) RB						
33470 (04)	7	SH110	0.250	0.00	800,000.00	200,000.01	0.00	1,000,000.01
MURRAY		GRADE, DRAIN & SURFACE SH 110: FROM JUST N. OF PRIMROSE LN. N. 0.25 MIS. STP -250C (033) PM						
24238 (11)	4		0.000	0.00	160,000.00	40,000.00	0.00	200,000.00
NOBLE		JOINT SEAL/REPAIR DIVISION 4 - BRIDGE WATERPROOF SEAL STP -252F (084) PM						
24239 (11)	4		0.000	0.00	800,000.00	200,000.00	0.00	1,000,000.00
NOBLE		BRIDGE PAINTING DIVISION 4 - BRIDGE PAINTING STP -252F (085) PM						
35155 (04)	4		0.000	0.00	800,000.00	200,000.00	0.00	1,000,000.00
NOBLE		BRIDGE WATER PROOF SEAL DIVISION WIDE: SILANE STP -252F (087) PM						
29871 (04)	4	IS035	3.500	0.00	3,700,000.00	3,700,000.00	0.00	7,400,000.00
OKLAHOMA		PAVEMENT REHABILITATION I-35: FROM THE I-44 JCT. N. 4.3 MIS. TO THE KILPATRICK TURNPIKE NHPP -3500- (110) PM						
35255 (04)	4	IS044	0.020	0.00	0.00	50,000.00	0.00	50,000.00
OKLAHOMA		BRIDGE REPAIR I-44: VEHICLE IMPACT DAMAGE REPAIR (NW 36TH ST. OVER I-44) BRIDGE NO. 5507 0333 X, NBI 18592 SAP -4400 (088) ES						
32897 (04)	8	US060	0.580	0.00	700,000.00	0.00	0.00	700,000.00
OTTAWA		A.D.A. PROJECTS FOR COMPLIANCE US-60; FROM 4.64 MI EAST OF US-59, EXTEND EAST 0.58 MI. STP -258B (083) AD						
27983 (04)	8	SH099	0.230	0.00	0.00	10,099,902.00	0.00	10,099,902.00
PAWNEE		BRIDGE & APPROACHES SH-99: OVER THE ARKANSAS RIVER, FROM JUST NORTH OF CLEVELAND, AT THE OSAGE C/L SSP -259B (056) SS						
27978 (04)	4	SH051	3.860	0.00	3,361,920.00	840,480.00	0.00	4,202,400.00
PAYNE		GRADE, DRAIN & SURFACE SH 51: FROM THE SH 18 JCT. E. 3.86 MILES TO WEST SIDE OF YALE STP -260B (043) PM						
28956 (04)	4	SH033	1.000	0.00	1,714,579.00	428,644.00	0.00	2,143,223.00
PAYNE		INTERSECT MODIF SH 33: SH 18 (LITTLE AVE.) & LINWOOD AVE. IN CUSHING NHPP -260N (055) PM						
28983 (04)	4	SH033	2.000	0.00	4,329,893.92	4,329,893.92	0.00	8,659,787.84
PAYNE		GRADE, DRAIN & SURFACE SH 33: PAVEMENT REPLACEMENT FROM SH 18 E. 2.0 MIS TO HARMONY DR. IN CUSHING NHPP -260N (054) PM						

JobPiece	CD	Highway	MILES	Adv Con	Federal	State	Other	Total
23284 (12)	3		0.000	0.00	0.00	400,000.00	0.00	400,000.00
BRIDGE PAINTING								
PONTOTOC DIVISION 3: BRIDGE PAINT PROJECTS								
	STP	-262F	(067)	PM				
23144 (16)	2		0.000	0.00	0.00	50,000.00	0.00	50,000.00
BRIDGE WATER PROOF SEAL								
PUSHMATAHA DIVISION 2: DIVISION WIDE SILANE PROJECTS (BRIDGE WATERPROOFING SEAL)								
	SSP	-264F	(078)	PM				
31943 (08)	8		0.000	0.00	0.00	1,000,000.74	0.00	1,000,000.74
BRIDGE WATER PROOF SEAL								
TULSA DIVISION 8 SILANE PROJECTS - MULTIPLE LOCATIONS								
	SSP	-272F	(307)	SS				
31944 (08)	8		0.000	0.00	0.00	1,000,000.74	0.00	1,000,000.74
JOINT SEAL/REPAIR								
TULSA JOINT SEAL/REPAIR								
	SSP	-272F	(306)	SS				
33316 (04)	8	SH051	0.000	0.00	814,621.02	0.00	203,655.26 (B)	1,018,276.28
ILLUMINATION								
TULSA: HIGHWAY LIGHTING FROM PEORIA AVE TO COLUMBIA ON BA EXPRESSWAY								
	NHPP	-272N	(325)	IG				
35010 (04)	8	US064	0.100	0.00	0.00	40,000.00	0.00	40,000.00
BRIDGE REPAIR								
TULSA US-64: VEHICLE IMPACT DAMAGE 65TH W. AVE. OVER US-64								
BRIDGE NO. 7286-1127X, NBI 18564								
	SAP	-019N	(147)	ES				

34 PROJECTS GRAND-TOTALS 0.00 38,900,672.36 37,470,792.00 11,303,655.26 87,675,119.62

OTHER FUNDING CATEGORIES:

- (A) CO. IMPROVE. ROAD & BRIDGE
- (B) LOCAL /CITY MATCHING FUNDS

PREPARED BY PROGRAMS DIVISION

FOR PRESENTATION AT THE COMMISSION MEETING ON JANUARY 11, 2021

AGENDA ITEM: 11

SUBJECT: Settlement for Damages to State Property

- a) On November 19, 2019, Carlos Hernandez was traveling southbound on I-35 near Indian Hills Road in Cleveland County. Mr. Hernandez struck an automobile consequently departing the road and striking an ODOT fence. This accident resulted in cost to repair the fence of \$1,247.40.

Mr. Hernandez was insured with Shelter Insurance with a policy limit of \$25,000. Total damages exceeded the policy limit. Shelter Insurance is offering a pro-rata settlement to all parties. ODOT's share of the prorated settlement is \$1,000.00 leaving a balance of \$247.40, which is not economically feasible to pursue. The balance is uncollectible.

- b) On April 3, 2020, Jeffrey Pappan was traveling northbound in the southbound inside lane of I-35 in Kay County. Mr. Pappan struck a semi consequently departing the road and striking ODOT guardrail. This accident resulted in cost to repair the guardrail of \$849.00.

Mr. Pappan was insured with Progressive Auto Insurance with a policy limit of \$25,000. Total damages exceeded the policy limit. Progressive Auto Insurance is offering a pro-rata settlement to all parties. ODOT's share of the prorated settlement is \$153.93 leaving a balance of \$695.07, which is not economically feasible to pursue. The balance is uncollectible.

Title 69, Section 1002 of the Oklahoma Statutes provides the Transportation Commission with the authority to settle claims which it may have against any person for damages to facilities belonging to the Department.

The Department recommends and requests acceptance of these settlement offers and recognition of the uncollectible balances writeoff.

**FOR PRESENTATION AT COMMISSION MEETING ON JANUARY 11, 2021
BY LOCAL GOVERNMENT DIVISION ENGINEER**

AGENDA ITEM NO.: 12

**SUBJECT: Request for Final Approval of the County Designation
Order for FY-2021**

In accordance with Title 69 O.S. § 636.3 Subsection B, this Designation Order is prepared for use by the County Road Machinery & Equipment Revolving Fund and has been approved by the Department of Transportation County Advisory Board (CAB).

The purpose of the Designation Order is to establish a priority basis to determine the order in which counties are approved to participate in the Equipment Revolving Fund for the noted fiscal year. The Designation Order is created using funds paid by the OK Tax Commission (from gross production taxes upon oil and natural gas, taxes on gasoline, diesel and special fuels, and motor vehicle fees and taxes) divided by certified county road miles. The subsequent 'Dollar per Mile' figure is prioritized by lowest to highest. As noted in the above-referenced statute, the counties receiving the least appropriations per mile may receive the highest priority. The CAB has deemed it critical to progress through the Designation Order so that all counties have equal access to participate in the Equipment Revolving Fund.

COUNTY CLASSIFICATION DESIGNATION ORDER
FOR FISCAL YEAR 2021

Designation Number	County
1	Tillman
2	Kiowa
3	Cotton
4	Harmon
5	Texas
6	Grant
7	Beaver
8	Cimarron
9	Washita
10	Noble
11	Jackson
12	Craig
13	Greer
14	Harper
15	Woodward
16	Delaware
17	Kay
18	Caddo
19	Jefferson
20	Lincoln
21	Nowata
22	Pawnee
23	Mayes
24	Beckham
25	Ottawa
26	McIntosh
27	Garfield
28	Adair
29	Custer
30	Muskogee
31	Cherokee
32	Sequoyah
33	Choctaw
34	Bryan
35	Logan
36	McCurtain
37	Rogers
38	Alfalfa
39	Roger Mills
40	Woods
41	Major
42	Okmulgee
43	Wagoner
44	LeFlore

COUNTY CLASSIFICATION DESIGNATION ORDER
FOR FISCAL YEAR 2021

Designation Number	County
45	Haskell
46	Seminole
47	Atoka
48	Okfuskee
49	Payne
50	Pottawatomie
51	Pushmataha
52	Marshall
53	Comanche
54	Ellis
55	Pontotoc
56	Osage
57	Pittsburg
58	Creek
59	Murray
60	Latimer
61	Johnston
62	Coal
63	Dewey
64	Hughes
65	Washington
66	Love
67	Stephens
68	Garvin
69	Carter
70	McClain
71	Blaine
72	Grady
73	Kingfisher
74	Canadian
75	Tulsa
76	Cleveland
77	Oklahoma