

OKLAHOMA TRANSPORTATION COMMISSION

At Large – Chairman, Gene McKown, Norman (405) 364-1152

District 1 – Member Bob Coburn, Muskogee, (918) 869-7495

Adair, Cherokee, Haskell, McIntosh, Muskogee, Okmulgee, Sequoyah, Wagoner

District 2 – Member, James L. Grimsley, Calera, (405) 514-7365

Atoka, Bryan, Choctaw, Latimer, LeFlore, McCurtain, Marshall, Pittsburg, Pushmataha

District 3 – Secretary, T.W. Shannon, Oklahoma City, 405-946-2265

Coal, Cleveland, Garvin, Hughes, Johnston, Lincoln, McClain, Okfuskee, Pontotoc, Pottawatomie, Seminole

District 4 – Member Don Freymiller, Oklahoma City, (405) 792-8000

Canadian, Garfield, Grant, Kay, Kingfisher, Logan, Noble, Oklahoma, Payne

District 5 – Member, David Dyson, Elk City, (580) 225-0450

Beckham, Blaine, Custer, Dewey, Greer, Harmon, Jackson, Kiowa, Roger Mills, Tillman, Washita

District 6 – Member Bobby J. Alexander, Woodward, (580) 254-3232

Alfalfa, Beaver, Cimarron, Ellis, Harper, Major, Texas, Woods, Woodward

District 7 – Member, Stephen LaForge, Chickasha, (405) 222-3050

Caddo, Carter, Comanche, Cotton, Grady, Jefferson, Love, Murray, Stephens

District 8 – Vice-Chairman, Member Robert Peterson, Tulsa (918) 281-2673

Craig, Creek, Delaware, Mayes, Nowata, Osage, Ottawa, Pawnee, Rogers, Tulsa, Washington

Secretary of Transportation – Tim J. Gatz (405) 425-3602

Oklahoma Department of Transportation

Executive Director	Tim J. Gatz	522-1800
Deputy Director	Dawn Sullivan	521-4768
Chief Engineer	Brian Taylor	521-2701
Director of Finance & Administration	Chelley Hilmes	521-2591
Director of Operations	Shawn Davis	521-4675
Director of Engineering	Tim Tegeler	521-6916
Director of Capital Programs	Rick Johnson	522-6000
Interagency Liaison & PR Advisor	Terri Angier	521-6004
General Counsel	Sarah Penn	521-2630
Bridge Division	Steve Jacobi	521-2606
Civil Rights	Jenny Allen	521-2072
Construction Division Engineer	John Leonard	521-2561
Environmental Programs Division	Siv Sundaram	521-3050
Facilities Management Division	Ken Phillips	522-7605
Human Resources Division	Scott Lange	521-2194
Lake/Industrial Access Programs	Mitch Surret	522-0290
Legal Division	Lisa Endres	521-2681
Local Government Division	Shelly Williams	521-2553
Maintenance Division	Taylor Henderson	521-2557
Materials Division	Matt Romero	521-2677
Media & Public Relations	Brenda Perry (Acting)	521-6006
Office Engineer	Anthony Delce	521-2625
Office of Mobility & Public Transit Division	Ernie Mbroh	521-2584
Office Services	Jamie Bleeker	521-2587
Operations Review & Evaluation Division	Holly Lowe	521-4708
Procurement	Jennifer Hankins	522-6792
Project Management Division	Daniel Nguyen	522-3618
Rail Programs Division	Jared Schwennesen	521-4203
Right-of-Way Division	Robert Blackwell	521-2661
Roadway Design	Caleb Austin	521-2695
Strategic Asset & Performance Management	Matthew Swift	521-2671
Survey Division	Kyle King	521-2621
Traffic Engineering Division	Chad Pendley	521-2861

ODOT Field Districts

<u>Location and District Engineer</u>	<u>Phone</u>	<u>Fax</u>
Dist. 1, Muskogee, Chris Wallace	(918)687-5407	(918)687-9955
Dist. 2, Antlers, Anthony Echelle	(580)298-3371	(580)298-6152
Dist. 3, Ada, Ron Brown	(580)332-1526	(580)332-0261
Dist. 4, Perry, Trenton January	(580)336-7340	(580)336-7350
Dist. 5, Clinton, Brent Almquist	(580)323-1431	(580)323-1430
Dist. 6, Buffalo, Ron McDaniel	(580)735-2561	(580)735-2248
Dist. 7, Duncan, Jay Earp	(580)255-7586	(580)255-5064
Dist. 8, Tulsa, Randle White	(918)838-9933	(918)832-9074



AGENDA FOR THE TRANSPORTATION COMMISSION MEETING

DATE: Monday, December 7, 2020

TIME: 11:00 a.m.

PLACE: Commission Meeting Room, ODOT Central Office and Teleconference

The Oklahoma Transportation Commission's meeting on Monday, Dec. 7, will be held with a quorum of Commissioners present at the Oklahoma Department of Transportation Central Office. Commissioners joining the meeting by video teleconference will be given a phone number and access code specifically for them that allows them to listen and ask questions. Meeting presenters and guests may attend through a virtual meeting via video teleconference in compliance with the Oklahoma Open Meeting Act.

The in-person meeting space for Commissioners at ODOT Central Office will follow CDC guidelines and be socially distanced to maintain a safe environment in light of COVID-19. In accordance with Governor Kevin Stitt's executive orders, anyone entering a state agency building is required to wear a face mask. Only a very limited number of staff will physically be in the Commission Room to uphold social distancing requirements.

The Oklahoma Transportation Commission meeting teleconference will be available through two options. Transportation industry partners and the general public may choose one of the two options below to access the virtual meeting:

- **To watch:**
Public access meeting link: <http://www.ustream.tv/channel/odot-monthly-commission-meeting>
Make sure the volume on your PC (or other device) and the Ustream volume are turned up.
- **To listen only:**
Dial this phone number, toll free: 1-669-900-6833
When prompted, dial in the Meeting Number: 989 0292 8670

Special Note: The public access will be monitored by ODOT to ensure that if the audio connection is lost or interrupted, the meeting will be stopped and not resumed until an audio connection is restored.

In such a circumstance, if the audio connection is not restored within thirty (30) minutes, the meeting will be deemed adjourned at the time the audio connection was lost and the meeting shall be reconvened at 1:30 p.m. on the same date as identified for the originally scheduled meeting.

If an audio connection cannot be restored at the time scheduled to reconvene the meeting, then the meeting shall be reconvened on the next business day at 9:00 a.m. and thereafter on the next business day at 9:00 a.m. until an audio connection is restored.

This meeting will be electronically recorded and audio livestreamed from 200 N.E. 21st St., Oklahoma City, OK 73105 and the phone number is 405-521-8000.

Public Access to complete Commission Packet: www.odot.org/meetings

ITEMS TO BE PRESENTED BY COMMISSION CHAIRMAN

Call to Order

Roll Call – Commission Secretary

ITEM TO BE PRESENTED BY THE SECRETARY TO THE COMMISSION

149. Approval of the Minutes of the Transportation Commission Meeting of November 2, 2020

CONSENT DOCKET TO BE PRESENTED BY COMMISSION CHAIRMAN

150. Speed Zone Revisions – Mr. Pendley

a) Beaver, Harper and Woodward Counties – District VI – at the following locations:

1. Along SH-34 in Woodward and Harper Counties, including the City of Woodward
2. Along US-183 in Woodward County, including the City of Woodward
3. Along US-412 in Woodward County, including the City of Woodward
4. Along SH-50 in Woodward County, including the Town of Mooreland
5. Along US-64 in Beaver County, including the Town of Forgan

b) Caddo, Grady, Jefferson and Stephens Counties - District VII – at the following locations:

1. Along SH-19 in Caddo County, including the Town of Cyril
2. Along SH-89 in Jefferson and Stephens Counties, including the Town of Ringling
3. Along SH-92 in rural Grady County, near Friend school
4. Along US-62 in Caddo and Grady Counties, including the Town of Verden

c) Mayes County - District VIII – at the following locations:

1. Along SH-82 in Mayes county, including the Town of Salina
2. Along SH-20 in Mayes County, including the Town of Salina
3. Along SH-82 In Mayes County, including the Town of Locust Grove

151. Land Sales – Mr. Phillips

- a) Pontotoc County – District III – located on the north side of SH-3 with the intersection of N-S 364 Rd. south of Stonewall, OK - \$7,100.00
- b) Tulsa County – District VIII – located at the southwest intersection of the northwest quadrant of the I-244 Inner Dispersal Loop (IDL) in the City of Tulsa - \$2,500.00

END OF CONSENT DOCKET

ITEMS TO BE PRESENTED BY DIRECTOR OF ENGINEERING – Mr. Tegeler

152. Programming Item

Tulsa County – District VIII - a project to repair vehicle impact damage to 65th W. Avenue over US-64, located 11.2 miles east of the Osage County line - \$40,000 - Party responsible for the damage is known.

153. Engineering Contracts

a) Statewide – All Districts – On-Demand Environmental Studies

CI-2253A	Able Consulting
CI-2253B	C.H. Guernsey & Company
CI-2253C	CC Environmental
CI-2253D	Cox McLain Environmental Consulting, Inc.
CI-2253E	CP&Y, Inc.
CI-2253F	Freese and Nichols, Inc.
CI-2253G	Garver, LLC
CI-2253H	Olsson, Inc.
CI-2253J	TEIM Design, PLLC

The aggregate not to exceed amount for these nine (9) contracts is \$1,800,000.00

b) Bryan County – District II - to provide preliminary engineering for US-70 over Lake Texoma (Roosevelt Bridge)

CI-2262	Garver, LLC	\$3,538,938.00
---------	-------------	----------------

c) Jackson County – District V - to prepare construction plans for SH-19: over the north fork of the Red River located at the Jackson/Kiowa county line

CI-2223C	EST, Inc.	\$540,200.00
----------	-----------	--------------

154. Engineering Contract Supplements

a) Pottawatomie County – District III – this supplement is for additional engineering to develop final construction plans for I-40 from Oklahoma County Line, east 2.5 miles; I-40 from 2.5 miles east of the Oklahoma County Line, east 2.2 miles and I-40 from 4.7 miles east of the Oklahoma County Line, east 2.7 miles

CI-2012	Supplement 6	CEC Corporation	\$215,352.00
---------	--------------	-----------------	--------------

b) Oklahoma County – District IV – this supplement is for additional engineering to develop final construction plans for Reconstruction of the I-35/I-240 interchange in Oklahoma City

CI-1060	Supplement 7	Poe and Associates, Inc.	\$2,000,718.00
---------	--------------	--------------------------	----------------

c) Payne County - District IV - this supplement is for additional engineering to develop final construction plans for SH-51: from junction I-35, east to SH-86. On eastbound SH-51 from SH-86, extend east 10 miles

CI-1825	Supplement 4	Tetra Tech, Inc.	\$395,000.00
---------	--------------	------------------	--------------

ITEMS TO BE PRESENTED BY CONSTRUCTION DIVISION ENGINEER – Mr. Leonard

155. Change Orders with Cumulative Total of \$75,000.00 or Less – Information Only

- a) Adair County - SH-51/SH-100 - SSP-201C(035)PM / SBR-201C(001)SB / 27949(04), \$0.00, 0.00%
- b) Alfalfa County - SH-8/SH-45 - STP-102B(025)SS / 17668(10), \$43,227.00, 0.44%
- c) Atoka County - SH-131 - STP-203C(070)3B / 34094(04), \$2,400.00, 0.50%
- d) Beaver County - US-83 - SSR-204B(029)SR / 33399(04), \$5,994.12, 0.24%
- e) Blaine County - SH-8 - STP-206C(044)SS / 27918(04), \$13,551.15, 0.57%

- f) Blaine County - Co. Rd. - CIRB-206D(049)RB / 30044(04), \$18,038.00, 3.44%
- g) Caddo County - US-62 - STP-208B(072)3P / 33883(04), \$31,719.60, 4.31%
- h) Canadian County - US-81 (I-40B) - NHPP-209N(051)SS / 27004(04), \$38,062.81, 0.38%
- i) Cleveland County - Ct. St. - STP-214B(068)AG / STP-214B(069)AG / 29300(04), #3, \$18,858.46, 0.20%
- j) Cleveland County - Ct. St. - STP-214B(068)AG / STP-214B(069)AG / 29300(04), #4, \$10,370.03, 0.11%
- k) Custer County - SH-73 - SBR-220C(066)SB / 31793(04), \$30,000.00, 2.97%
- l) Custer County - SH-33 - MC-220F(073)MD / 34771(04), \$2,400.00, 0.12%
- m) Greer County - US-283 - STP-228B(017)PM / 29509(04), \$47,915.65, 0.61%
- n) Harmon County - SH-30 - STP-229C(011)PM / 27898(04), \$63,916.72, 1.57%
- o) Jackson County - Co. Rd. - STP-233D(041)CI / 31149(04), \$7,711.20, 1.09%
- p) Johnston County - SH-22/SH-99 - STP-235C(038)PM / 31841(04), \$7,274.43, 0.11%
- q) Kay County - Ct. St. - STP-236B(062)UR / 33687(04), \$10,017.35, 0.68%

- r) Kingfisher County - US-81 - STP-NBIP(523)SS / 32687(04), \$17,500.00, 3.37%
- s) Logan County - US-77 - SSR-242B(074)SR / SSR-242B(075)SR / 33803(04), \$3,504.00, -0.14% Underrun
- t) Noble County - I-40 - STP-252F(071)PM / 24239(20), \$24,253.93, 4.12%
- u) Osage County - US-60 - SBR-257N(080)SB / 32732(04), \$58,350.00, 4.74%
- v) Pittsburg County - SH-31 EB - SBR-261B(090)SB / 29738(04), #1, \$9,703.42, 0.46%
- w) Pittsburg County - SH-31 EB - SBR-261B(090)SB / 29738(04), #2, \$1,393.28, 0.07%
- x) Pittsburg County - US-69 - SSP-013N(176)PM / 34329(04), \$73,179.81, 1.15%
- y) Rogers County - Ct. St. - STP-266B(072)IG / 33314(04), \$4,769.44, 0.59%
- z) Sequoyah County - Co. Rd. - STP-268C(056)CI / 32396(04), \$9,660.00, 0.11%
- aa) Texas County - Co. Rd. - STP-270C(039)CI / 28649(04), \$7,920.00, -1.13% Underrun
- bb) Tulsa County - Ct. St. - ACNHPP-2440-(017)FP / 28859(04), \$6,116.00, 0.12%
- cc) Tulsa County - SH-11 - STP-272B(266)PM / 31885(04), \$51,000.00, 2.91%

156. Change Orders with Cumulative Total Greater than \$75,000.00

- a) Adair County - US-59 - NHPP-101A(052) / 16928(17), \$0.02, 0.00%
- b) Atoka County - COUNTY ROAD (BOGGY D - CIRB-203C(068)RB / 31192(04), \$46,268.36, 2.85%
- c) Beckham County - SH-6 - STP-205B(076)PM / ACNHPP-4000(061)PM / 30998(04), #7 \$998.25, 0.00%
- d) Beckham County - SH-6 - STP-205B(076)PM / ACNHPP-4000(061)PM / 30998(04), #8, \$12,681.41, 0.04%
- e) Beckham County - SH-6 - STP-205B(076)PM / ACNHPP-4000(061)PM / 30998(04), #10, \$84,931.25, 0.30%
- f) Beckham County - SH-6 - STP-205B(076)PM / ACNHPP-4000(061)PM / 30998(04), #11, \$36,800.00, 0.13%
- g) Beckham County - SH-6 - STP-205B(076)PM / ACNHPP-4000(061)PM / 30998(04), #12, \$70,027.08, 0.24%
- h) Blaine County - SH-3 - NHPP-017N(254)PM / 27913(10), \$95,842.71, 0.97%
- i) Canadian County - I-40 / SH-4 - IMY-0040-4(436) / IMY-0040-4(435)138 / SBR-109N(182)SB / 24424(07), \$233,267.60, 0.48%
- j) Garvin County - Co. Rd. - CIRB-225C(073)RB / CIRB-225C(074)RB / 27848(04), \$37,497.42, 0.74%
- k) Kay County - US-77 - STP-136B(145)SS / 24380(04), \$105,656.00, 1.13%
- l) Logan County - Co. Rd. - ACERSTP-242C(056)ER / 32379(04), \$1,551.53, 0.15%
- m) Major County - SH-58 - SBR-247C(025)SB / 29477(04), #3, \$147,502.04, 3.55%
- n) Major County - SH-58 - SBR-247C(025)SB / 29477(04), #4, \$21,031.93, 0.51%
- o) Mayes County - SH-28 - SSP-249C(049)SS / SSP-249C(052)SS / 31884(05), \$145,005.00, 1.05%
- p) Oklahoma County - I-235 - NHPPI-2350-(009)PM / 09033(27), \$8,885.23, 0.01%
- q) Oklahoma County - Ct. St. - TAP-255D(328)AG / 31435(04), \$13,310.31, 2.53%

- r) Oklahoma County - SH-66 - TAP-255C(490)TP / NHPP-255N(489)EH / 32984(04), \$62,796.80, 1.80%
- s) Oklahoma County - I-35 - STP-255F(501)3B / 34180(04), \$2,452.87, 0.30%
- t) Osage County - Co. Rd. - STP-157C(167)CI / 25528(04), \$54,590.96, 2.41%
- u) Pittsburg County - US-69 - SSP-013N(176)PM / 34329(04), \$235,627.04, 3.70%
- v) Pottawatomie County - US-270 - SSP-263B(062)PM / 29569(04), \$9,802.49, 0.53%
- w) Pottawatomie County - I-40 - NHPPI-4000(096)3P / NHPPI-4000(097)3P / 33336(04), \$17,308.40, 0.29%
- x) Sequoyah County - I-40/US-64 - NHPPI-4000-(248)FP / NHPPI-4000-(064)PM / 10618(07), \$391,472.23, 0.92%
- y) Tulsa County - SH-51 - NHPP-272N(205)PM / SSP-272N(206)PM / 11477(04), \$207,755.86, 1.62%
- z) Tulsa County - I-44 - ACNHPPI-4400-(438)SS / 21899(04), \$41,587.68, 0.14%
- aa) Tulsa County - I-244 - NHPPIY-0244-2(501) / NHPPIY-0244-2(504) / NHPPIY-0244-2(507) / 26300(06), \$50,600.99, 0.14%
- bb) Tulsa County - Ct. St. - STP-272B(278)CI / 30703(04), \$108,163.33, 3.75%

ITEMS TO BE PRESENTED BY THE COMPTROLLER DIVISION

157. Proposed Bid Openings – Mr. Hackney, Project Funding Manager

- a) Final February, 2021 Proposed Bid Opening
- b) Tentative March, 2021 Proposed Bid Opening
- c) Tentative April, 2021 Proposed Bid Opening

ITEM TO BE PRESENTED BY DIRECTOR OF OPERATIONS – Mr. Davis

158. Settlement of Claim for Rock Excavation to Kolb Grading, LLC

Latimer County – District II - Grade, Drain and Surface US-270: from 2.5 miles east of the Pittsburg County Line - Project No.: ACSTP-139B(049)SS, 20922(04) - \$207,642.08

ITEM TO BE PRESENTED BY STRATEGIC ASSET & PERFORMANCE MANAGEMENT DIVISION ENGINEER - Mr. Swift

159. 2020-2040 Oklahoma Public Transit Policy Plan

The Oklahoma Department of Transportation (ODOT), in collaboration with the Oklahoma Transit Association (OTA), and along with the help of many stakeholders, has completed the 2020-2040 Oklahoma Public Transit Policy Plan (OPTPP). Directed by the passage of House Bill 1365, the plan is a policy document that guides ODOT and OTA in the development, management, and operation of the state's public transit system over the next 20 years. The OPTPP does not focus on specific projects or service routes, but rather focuses on overall mobility strategies and priorities for improving transit service and connectivity.

Public involvement and stakeholder outreach were a vital part of developing the OPTPP. During the planning process, input was gathered from across Oklahoma from the general public as well as representatives from businesses, local governments, tribes, and transit service providers to understand their transportation priorities and needs.

Following this presentation and with Commission approval, the OPTPP will be submitted to the Governor and State Legislature.

ITEM TO BE PRESENTED BY THE OFFICE ENGINEER – Mr. Delce

160. Awards

- a) Deferral from the October 15, 2020 - Regular Bid Opening
- b) November 19, 2020 – Regular Bid Opening

ITEMS TO BE PRESENTED BY THE PROJECT MANAGEMENT DIVISION – Mr. Nguyen

161. Asset Preservation Plan

The Department has completed the proposed Asset Preservation Plan with consideration for the critical needs of Oklahoma's transportation infrastructure and the financial constraint mandated by the projected Federal and State funding availability. The Work Plan is balanced by District within the budgetary limitations of State fiscal years 2021 through 2024. The encompassed projects have been defined, validated and included in accordance with the transportation needs and priorities of the State.

Information Only: No Commission action required.

162. 8-Year Construction Work Plan

The Department has completed the proposed 8-Year Construction Work Plan with consideration for the critical needs of Oklahoma's transportation infrastructure and the financial constraint mandated by the projected Federal and State funding availability. The Work Plan is balanced by District within the budgetary limitations of Federal fiscal years 2021 through 2028. The encompassed projects have been defined, validated and included in accordance with the transportation needs and priorities of the State.

ITEM TO BE PRESENTED BY THE DIRECTOR – Mr. Gatz

163. Director's Report

Information Only: No Commission action required.

ITEM TO BE PRESENTED BY COMMISSION CHAIRMAN

164. Adjournment Motion

The Oklahoma Department of Transportation (ODOT) ensures that no person or groups of persons shall, on the grounds of race, color, sex, religion, national origin, age, disability, retaliation or genetic information, be excluded from participation in, be denied the benefits of, or be otherwise subjected to discrimination under any and all programs, services, or activities administered by ODOT, its recipients, sub-recipients, and contractors. To request an accommodation please contact the ADA Coordinator at 405-521-4140 or the Oklahoma Relay Service at 1-800-722-0353. If you have any ADA or Title VI questions email ODOT-ada-titlevi@odot.org.

FOR PRESENTATION AT COMMISSIONER MEETING OF DECEMBER 7, 2020

AGENDA ITEM NO: 150

SUBJECT: Speed Zone Revisions

a) Various Locations – Commissioner District VI

		Length
1.	<u>Along SH 34 in Woodward & Harper Counties including the City of Woodward</u>	
25 MPH	Beginning at the US 412 & US 183 & SH 34 junction, extending northerly 0.29 mile to a point 0.29 mile north of the US 412 & US 183 & SH 34 junction <u>PRESENTLY ZONED/POSTED 25 MPH (NO CHANGE)</u>	0.29 mile
35 MPH	Beginning at a point 0.29 mile north of the US 412 & US 183 & SH 34 junction, extending northerly 0.50 mile to a point 0.79 mile north of the US 412 & US 183 & SH 34 junction	
25 MPH (School)	<u>SCHOOL ZONE (0.11 mile)</u> Beginning at a point 0.02 mile south of Webster Avenue, extending northerly 0.11 mile to a point 0.09 mile north of Webster Avenue Effective only on regular school days, from 7:30 am to 8:30 am and from 2:30 pm to 3:30 pm <u>PRESENTLY ZONED 35, 45 MPH</u> <u>PRESENTLY POSTED 35 MPH (ZONING CHANGE)</u>	0.50 mile
45 MPH	Beginning at a point 0.79 mile north of the US 412 & US 183 & SH 34 junction, extending northerly 0.29 mile to a point 1.08 miles north of US 412 & US 183 & SH 34 junction <u>PRESENTLY ZONED 45, 55 MPH</u> <u>PRESENTLY POSTED 45 MPH (ZONING CHANGE)</u>	0.29 mile
55 MPH	Beginning at a point 1.08 miles north of the US 412 & US 183 & SH 34 junction, extending northerly 0.21 mile to a point 1.29 miles north of the US 412 & US 183 & SH 34 junction <u>PRESENTLY ZONED/POSTED 55 MPH (NO CHANGE)</u>	0.21 mile
65 MPH	Beginning at a point 1.29 miles north of the US 412 & US 183 & SH 34 junction, extending northerly 9.84 miles to the Woodward & Harper County Line <u>PRESENTLY NOT ZONED</u> <u>PRESENTLY POSTED 65 MPH (ZONING CHANGE)</u>	9.84 miles

65 MPH	Beginning at the Woodward & Harper County Line, extending northerly 18.40 miles to the US 64 & SH 34 junction <u>PRESENTLY NOT ZONED</u> <u>PRESENTLY POSTED 65 MPH (ZONING CHANGE)</u>	18.40 miles
--------	---	-------------

=====

TOTAL APPROXIMATE LENGTH ZONED	29.53 miles
--------------------------------	-------------

2. <u>Along US 183 in Woodward County including the City of Woodward</u>	Length
--	--------

35 MPH	Beginning at a point 0.06 mile south of Cedar Ave, extending northerly then westerly 2.06 miles to a point approximately 0.06 mile west of 28 th Street
--------	--

25 MPH (School)	<u>SCHOOL ZONE (0.17 mile)</u> Beginning at a point 0.23 mile south of the US 183 & US 183 west & US 412 junction, extending northerly 0.17 mile to a point 0.06 mile south of the US 183 & US 183 west & US 412 junction
--------------------	--

Effective only on regular school days,
from 7:30 am to 8:30 am and
from 2:30 pm to 3:30 pm and

25 MPH (School)	<u>SCHOOL ZONE (0.13 mile)</u> Beginning at a point 0.02 mile east of 10 th Street, extending westerly 0.13 to a point 0.11 mile west of 10 th Street
--------------------	--

Effective only on regular school days,
from 7:30 am to 8:30 am and
from 2:30 pm to 3:30 pm and

<u>PRESENTLY ZONED/POSTED 35 MPH (NO CHANGE)</u>	2.06 miles
--	------------

40 MPH	Beginning at a point 0.06 mile west of 28 th Street, extending westerly 0.45 mile to 34 th Street <u>PRESENTLY ZONED/POSTED 40 MPH (NO CHANGE)</u>	0.45 mile
--------	--	-----------

=====

TOTAL APPROXIMATE LENGTH ZONED	2.51 miles
--------------------------------	------------

		Length
3. <u>Along US 412 in Woodward County including the City of Woodward</u>		
35 MPH	Beginning at the US 412 & US 183 & SH 34 junction, extending easterly 0.96 mile to a point 0.96 mile east of the US 412 & US 183 & SH 34 junction	
25 MPH (School)	<u>SCHOOL ZONE (0.13 mile)</u> Beginning at a point 0.07 mile west of 1 st Street, extending easterly 0.13 to a point 0.06 mile east of 1 st Street	
	Effective only on regular school days, from 7:30 am to 8:30 am and from 2:30 pm to 3:30 pm	
	<u>PRESENTLY ZONED/POSTED 35 MPH (NO CHANGE)</u>	0.96 mile
		=====
	TOTAL APPROXIMATE LENGTH ZONED	0.96 mile
4. <u>Along SH 50 in Woodward County including the Town of Mooreland</u>		
		Length
30 MPH	Beginning at the US 412 & SH 50 junction, extending northerly 0.38 mile to a point 0.38 mile north of the US 412 & SH 50 junction <u>PRESENTLY ZONED/POSTED 30 MPH (NO CHANGE)</u>	0.38 mile
35 MPH	Beginning at a point 0.38 mile north of the US 412 & SH 50 junction, extending northerly 0.45 mile to a point 0.83 mile north of the US 412 & SH 50 junction	
25 MPH (School)	<u>SCHOOL ZONE (0.13 mile)</u> Beginning at a point 1.13 miles north of the US 412 & SH 50 junction, extending northerly 0.13 mile to a point 1.26 miles north of the US 412 & SH 50 junction	
	Effective only on regular school days, from 7:45 am to 8:45 am and from 3:00 pm to 4:00 pm	
	<u>PRESENTLY ZONED 35, 45 MPH</u> <u>PRESENTLY POSTED 35 MPH (ZONING CHANGE)</u>	0.45 mile
45 MPH	Beginning at a point 0.83 mile north of the US 412 & SH 50 junction, extending northerly 0.30 mile to a point 1.13 miles north of the US 412 & SH 50 junction <u>PRESENTLY ZONED 45, 55 MPH</u> <u>PRESENTLY POSTED 45 MPH (ZONING CHANGE)</u>	0.30 mile
55 MPH	Beginning at a point 1.13 miles north of the US 412 & SH 50 junction, extending northerly 0.20 mile to a point 1.33 miles north of the US 412 & SH 50 junction <u>PRESENTLY ZONED/POSTED 55 MPH (ZONING CHANGE)</u>	0.20 mile

65 MPH	Beginning at a point 1.33 miles north of the US 412 & SH 50 junction, extending northerly 22.50 miles to a point approximately 0.10 mile north of CR N2192 Rd. <u>PRESENTLY NOT ZONED</u> <u>PRESENTLY POSTED 65 MPH (ZONING CHANGE)</u>	22.50 miles
--------	--	-------------

=====

TOTAL APPROXIMATE LENGTH ZONED	23.83 miles
--------------------------------	-------------

5. <u>Along US 64 in Beaver County including the Town of Forgan</u>	Length
---	--------

65 MPH	Beginning at the US 64 & US 83 junction, extending easterly 17.85 miles to a point 0.13 mile west of Hollow N1370 <u>PRESENTLY ZONED 70 MPH DAY & 60 MPH NIGHT (1973)</u> <u>PRESENTLY POSTED 65 MPH (ZONING CHANGE)</u>	17.85 miles
--------	--	-------------

55 MPH	Beginning at a point 0.13 mile west Hollow N1370, extending easterly 0.20 mile to a point 0.07 mile east of Hollow N1370 <u>PRESENTLY ZONED 70 MPH DAY & 60 MPH NIGHT, 60 MPH</u> <u>PRESENTLY POSTED 55 MPH (ZONING CHANGE)</u>	0.20 mile
--------	--	-----------

45 MPH	Beginning at a point 0.07 mile east of Hollow N1370, extending easterly 0.16 mile to a point 0.23 mile east of Hollow N1370. <u>PRESENTLY ZONED/POSTED 45 MPH (NO CHANGE)</u>	0.16 mile
--------	--	-----------

35 MPH	Beginning at a point 0.23 mile east of Hollow N1370, extending easterly 0.69 mile to a point 0.10 mile west of Hollow N1380	
--------	---	--

25 MPH (School)	<u>SCHOOL ZONE (0.27 mile)</u> Beginning at a point 0.06 mile west of Crescent Wichita Falls St, extending easterly 0.27 mile to a point 0.21 mile east of Crescent Wichita Falls St.	
--------------------	--	--

Effective only on regular school days,
from 7:15 am to 8:15 am and
from 3:00 pm to 4:00 pm

<u>PRESENTLY ZONED 35/45 MPH</u> <u>PRESENTLY POSTED 35 MPH (ZONING CHANGE)</u>	0.69 mile
--	-----------

45 MPH	Beginning at a point 0.10 mile west of Hollow N1380, extending easterly 0.19 mile to a point 0.09 mile east of Hollow N1380 <u>PRESENTLY ZONED 70 MPH DAY & 60 MPH NIGHT, 45 MPH</u> <u>PRESENTLY POSTED 45 MPH (ZONING CHANGE)</u>	0.19 mile
--------	---	-----------

55 MPH	Beginning at a point 0.09 mile east of Hollow N1380, extending easterly 0.20 mile to a point 0.29 mile east of Hollow N1380 <u>PRESENTLY ZONED 70 MPH DAY & 60 MPH NIGHT (1970)</u> <u>PRESENTLY POSTED 55 MPH (ZONING CHANGE)</u>	0.20 mile
--------	--	-----------

65 MPH	Beginning at a point 0.29 mile east of Hollow N1380, extending easterly 18.90 miles to the US 64 & Hollow E0009 junction <u>PRESENTLY ZONED 70 MPH DAY & 60 MPH NIGHT (1970 & 1973)</u> <u>PRESENTLY POSTED 65 MPH (ZONING CHANGE)</u>	18.90 miles
--------	--	-------------

=====

TOTAL APPROXIMATE LENGTH ZONED	38.19 miles
--------------------------------	-------------

b) Various Locations – Commissioner District VII

1.	<u>Along SH 19 in Caddo County including the Town of Cyril</u>	Length
----	--	--------

65 MPH	Beginning at a point 0.69 mile east of the US 62 & SH 19 junction, extending easterly 7.46 miles to a point 0.73 mile west of the US 277 & SH 19 junction <u>PRESENTLY NOT ZONED</u> <u>PRESENTLY POSTED 55, 65 MPH (CHANGE)</u>	7.46 miles
--------	--	------------

55 MPH	Beginning at a point 0.73 mile west of the US 277 & SH 19 junction, extending easterly 0.10 mile to a point 0.63 mile west of the US 277 & SH 19 junction <u>PRESENTLY ZONED/POSTED 50, 55 MPH (CHANGE)</u>	0.10 mile
--------	--	-----------

45 MPH	Beginning at a point 0.63 mile west of the US 277 & SH 19 junction, extending westerly 0.10 mile to a point 0.53 miles west of the US 277 & SH 19 junction <u>PRESENTLY ZONED/POSTED 50 MPH (CHANGE)</u>	0.10 mile
--------	---	-----------

35 MPH	Beginning at a point 0.53 mile west of the US 277 & SH 19 junction, extending westerly 0.53 mile to the US 277 & SH 19 junction	
--------	---	--

25 MPH (School)	<u>SCHOOL ZONE (0.21 mile)</u> Beginning at a point 0.28 mile west of the US 279 & SH 19 junction, extending easterly 0.21 mile to a point 0.07 mile west of the US 277 & SH 19 junction Effective only on regular school days, from 7:30 am to 8:30 am and from 3:30 pm to 4:30 pm <u>PRESENTLY ZONED/POSTED 35, 40, 50 MPH (CHANGE)</u>	0.53 mile
--------------------	--	-----------

=====

TOTAL APPROXIMATE LENGTH ZONED	8.19 miles
--------------------------------	------------

2. <u>Along SH 89 in Jefferson & Stephens Counties including the Town of Ringling</u>		Length
35 MPH	Beginning at the US 70 & SH 89 junction, extending northerly 0.45 mile to a point 0.45 mile north of the US 70 & SH 89 junction <u>PRESENTLY ZONED/POSTED 35 MPH (NO CHANGE)</u>	0.45 mile
30 MPH	Beginning at a point 0.45 mile north of the US 70 & SH 89 junction, extending northerly 0.27 mile to a point 0.72 mile north of the US 70 & SH 89 junction <u>PRESENTLY ZONED/POSTED 30 MPH (NO CHANGE)</u>	0.27 mile
35 MPH	Beginning at a point 0.72 mile north of the US 70 & SH 89 junction, extending northerly 0.44 mile to a point 0.01 mile south of CR E1950 Rd. (W. Pine Street)	
25 MPH (School)	<u>SCHOOL ZONE (0.18 mile)</u> Beginning at a point 0.09 mile north of A Street, extending northerly 0.18 mile to a point 0.27 mile north of A Street Effective only on regular school days, from 7:15 am to 8:15 am and from 3:15 pm to 4:30 pm <u>PRESENTLY ZONED 40, 50 MPH</u> <u>PRESENTLY POSTED 35 MPH (ZONING CHANGE)</u>	0.44 mile
45 MPH	Beginning at a point 0.01 mile south of CR E1950 Rd. (W. Pine Street), extending northerly 0.15 mile to a point 0.14 mile north of CR E1950 Rd. (W. Pine Street) <u>PRESENTLY NOT ZONED</u> <u>PRESENTLY POSTED 45 MPH (ZONING CHANGE)</u>	0.15 mile
55 MPH	Beginning at a point 0.14 mile north of CR E1950 Rd. (W. Pine Street), extending northerly 0.16 mile to a point 0.30 mile north of CR E1950 Rd. (W. Pine Street) <u>PRESENTLY NOT ZONED</u> <u>PRESENTLY POSTED 55 MPH (ZONING CHANGE)</u>	0.16 mile
65 MPH	Beginning at a point 0.30 mile north of CR E1950 Rd. (W. Pine Street), extending northerly 6.78 miles to the Jefferson & Stephens County Line <u>PRESENTLY NOT ZONED</u> <u>PRESENTLY POSTED 65 MPH (ZONING CHANGE)</u>	6.78 miles
65 MPH	Beginning at the Jefferson & Stephens County Line, extending northerly 1.50 miles to the SH 89 & SH 53 junction <u>PRESENTLY NOT ZONED</u> <u>PRESENTLY POSTED 65 MPH (ZONING CHANGE)</u>	1.50 miles
		=====
	TOTAL APPROXIMATE LENGTH ZONED	9.75 miles

3. <u>Along SH 92 in Rural Grady County</u>		Length
50 MPH	Beginning at the US 62 & SH 92 junction, extending northerly 0.73 mile to a point 0.73 mile north of the US 62 & SH 92 junction <u>PRESENTLY ZONED 45, 55 MPH</u> <u>PRESENTLY POSTED 45, 55 MPH (CHANGE)</u>	0.73 mile
45 MPH	Beginning at a point 0.73 mile north of the US 62 & SH 92 junction, extending northerly 0.36 mile to a point 0.06 mile north of CR E1350 Rd.	
35 MPH (School)	<u>SCHOOL ZONE (0.16 mile)</u> Beginning at a point 0.13 mile south of CR E1350 Rd, extending northerly 0.16 mile to a point 0.03 mile north of CR E1350 Rd. Effective only on regular school days, from 7:00 am to 8:15 am and from 3:00 pm to 4:00 pm <u>PRESENTLY ZONED/POSTED 45 MPH (NO CHANGE)</u>	0.36 mile
55 MPH	Beginning at a point 0.06 mile north of CR E1350 Rd., extending northerly 0.11 mile to a point 0.17 mile north of CR E1350 Rd. <u>PRESENTLY NOT ZONED</u> <u>PRESENTLY POSTED 55 MPH (ZONING CHANGE)</u>	0.11 mile
65 MPH	Beginning at a point 0.11 mile north of CR E1350 Rd., extending northerly 6.07 mile to a point 0.82 mile south of CR E1280 Rd. (Main Street) <u>PRESENTLY NOT ZONED</u> <u>PRESENTLY POSTED 65 MPH (ZONING CHANGE)</u>	6.07 miles
		=====
	TOTAL APPROXIMATE LENGTH ZONED	7.27 miles
4. <u>Along US 62 in Caddo & Grady Counties including the Town of Verden</u>		Length
70 MPH	Beginning at a point 1.33 miles east of the US 62 & SH 8 junction, extending easterly 6.44 miles to a point 0.42 mile west of the Caddo & Grady County Line <u>PRESENTLY NOT ZONED</u> <u>PRESENTLY POSTED 70 MPH (ZONING CHANGE)</u>	6.44 miles
65 MPH	Beginning at a point 0.42 mile west of the Caddo & Grady County Line, extending easterly 0.14 mile to a point 0.28 mile west of the Caddo & Grady County Line <u>PRESENTLY NOT ZONED</u> <u>PRESENTLY POSTED 65 MPH (ZONING CHANGE)</u>	0.14 mile

55 MPH	Beginning at a point 0.28 mile west of the Caddo & Grady County Line, extending easterly 0.13 mile to a point 0.15 mile west of the Caddo & Grady County Line <u>PRESENTLY ZONED 50 MPH</u> <u>PRESENTLY POSTED 45, 55 MPH (CHANGE)</u>	0.13 mile
45 MPH	Beginning at a point 0.15 mile west of the Caddo & Grady County Line, extending easterly 0.15 mile to the Caddo & Grady County Line <u>PRESENTLY ZONED 50 MPH</u> <u>PRESENTLY POSTED 45 MPH (ZONING CHANGE)</u>	0.15 mile
35 MPH	Beginning at the Caddo & Grady County Line, extending easterly 0.71 mile to a point 0.71 mile east of the Caddo & Grady County	
25 MPH (School)	<u>SCHOOL ZONE (0.25 mile)</u> Beginning at a point 0.01 mile east of 2 nd Street, extending easterly 0.25 mile to a point 0.01 mile west of Wedgewood Drive Effective only on regular school days, from 7:15 am to 8:15 am and from 3:15 pm to 4:15 pm <u>PRESENTLY ZONED 40, 45, 50 MPH</u> <u>PRESENTLY POSTED 35 MPH (ZONING CHANGE)</u>	0.71 mile
45 MPH	Beginning at a point 0.71 mile east of the Caddo & Grady County Line, extending easterly 0.17 mile to a point 0.88 mile east of the Caddo & Grady County Line <u>PRESENTLY ZONED 50 MPH</u> <u>PRESENTLY POSTED 45 MPH (ZONING CHANGE)</u>	0.17 mile
55 MPH	Beginning at a point 0.88 mile east of the Caddo & Grady County Line, extending easterly 0.21 mile to a point 1.09 miles east of the Caddo & Grady County Line <u>PRESENTLY ZONED 55 MPH</u> <u>PRESENTLY POSTED 55, 65 MPH (CHANGE)</u>	0.21 mile
60 MPH	Beginning at a point 1.09 miles east of the Caddo & Grady County Line, extending easterly 0.10 mile to a point 1.19 miles east of the Caddo & Grady County Line <u>PRESENTLY NOT ZONED</u> <u>PRESENTLY POSTED 65 MPH (CHANGE)</u>	0.10 mile
70 MPH	Beginning at a point 1.19 miles east of the Caddo & Grady County Line, extending easterly 6.68 miles to a point 0.45 mile west of 29 th Street <u>PRESENTLY NOT ZONED</u> <u>PRESENTLY POSTED 70 MPH (ZONING CHANGE)</u>	6.68 miles

=====

TOTAL APPROXIMATE LENGTH ZONED 14.73 miles

c) Various Locations – Commissioner District VIII

1. Along SH 82 in Mayes County including the Town of Salina Length

55 MPH Beginning at a point 0.80 mile south of the SH 20 & SH 82 junction, extending northerly 0.23 mile to a point 0.57 mile south of the SH 20 & SH 82 junction
PRESENTLY ZONED 45, 55 MPH
PRESENTLY POSTED 55 MPH (NO CHANGE) 0.23 mile

45 MPH Beginning at a point 0.57 mile south of the SH 20 & SH 82 junction, extending northerly 0.57 mile to the SH 20 & SH 82 junction
PRESENTLY ZONED/POSTED 45 MPH (NO CHANGE) 0.57 mile

=====

TOTAL APPROXIMATE LENGTH ZONED 0.80 mile

2. Along SH 20 in Mayes County including the Town of Salina Length

45 MPH Beginning at the SH 20 & SH 82 junction, extending northerly 0.94 mile to a point 0.94 mile north of the SH 20 & SH 82 junction

35 MPH (School) SCHOOL ZONE (0.32 mile)
Beginning at a point 0.03 mile south of Campus Lane, extending northerly 0.32 mile to a point 0.29 mile north of Campus Lane

Effective only on regular school days,
From 7:15 am to 8:15 am and
from 3:15 pm to 4:15 pm

PRESENTLY ZONED 45, 55 MPH
PRESENTLY POSTED 45 MPH (ZONING CHANGE) 0.94 mile

=====

TOTAL APPROXIMATE LENGTH ZONED 0.94 mile

3. Along SH 82 in Mayes County including the Town of Locust Grove Length

65 MPH Beginning at Mayes & Cherokee County Line, extending northerly 6.69 miles to a point 1.06 miles south of the US 412 Alternate & SH 82 junction
PRESENTLY NOT ZONED
PRESENTLY POSTED 65 MPH (ZONING CHANGE) 6.69 miles

55 MPH	Beginning at a point 1.06 miles south of the US 412 Alternate & SH 82 junction, extending northerly 0.72 mile to a point 0.34 mile south of the US 412 Alternate & SH 82 junction <u>PRESENTLY NOT ZONED</u> <u>PRESENTLY POSTED 55 MPH (ZONING CHANGE)</u>	0.72 mile
45 MPH	Beginning at a point 0.34 mile south of the US 412 Alternate & SH 82 junction, extending northerly 0.84 mile to a point 0.15 mile north of CR 560 Rd. (Joe Koelsch St.)	
35 MPH (School)	<u>SCHOOL ZONE (0.28 mile)</u> Beginning at a point 0.13 mile north of the US 412 Alternate & SH 82 junction, extending northerly 0.28 mile to a point 0.03 mile north of CR 560 Rd. (Joe Koelsch St.) Effective only on regular school days, from 7:30 am to 9:30 am and from 3:30 pm to 4:45 pm <u>PRESENTLY ZONED 35, 45 MPH</u> <u>PRESENTLY POSTED 45 MPH (ZONING CHANGE)</u>	0.84 mile
55 MPH	Beginning at a point 0.15 mile north of CR 560 Rd. (Joe Koelsch St.), extending northerly 0.22 mile to a point 0.37 mile north of CR 560 Rd. (Joe Koelsch St.) <u>PRESENTLY ZONED 55, 65 MPH</u> <u>PRESENTLY POSTED 55 MPH (ZONING CHANGE)</u>	0.22 mile
65 MPH	Beginning at a point 0.37 mile north of CR 560 Rd. (Joe Koelsch St.), extending northerly 5.37 miles to a point 0.80 mile south of the SH 82 & SH 20 junction <u>PRESENTLY ZONED/POSTED 65 MPH (NO CHANGE)</u>	5.37 miles

=====

TOTAL APPROXIMATE LENGTH ZONED 13.84 miles

Engineering studies have been conducted at these locations in accordance with current Department of Transportation Rules, Regulations, and Policies.

Commission Approval is Recommended

FOR PRESENTATION AT THE DECEMBER 7, 2020 COMMISSION MEETING

AGENDA ITEM NO.: 151(a)

SUBJECT: Land Sale, District III, 00327(02) Part 2,
Part of Parcels 49 & 50, Section 14, T2N, R7E,
Pontotoc County.

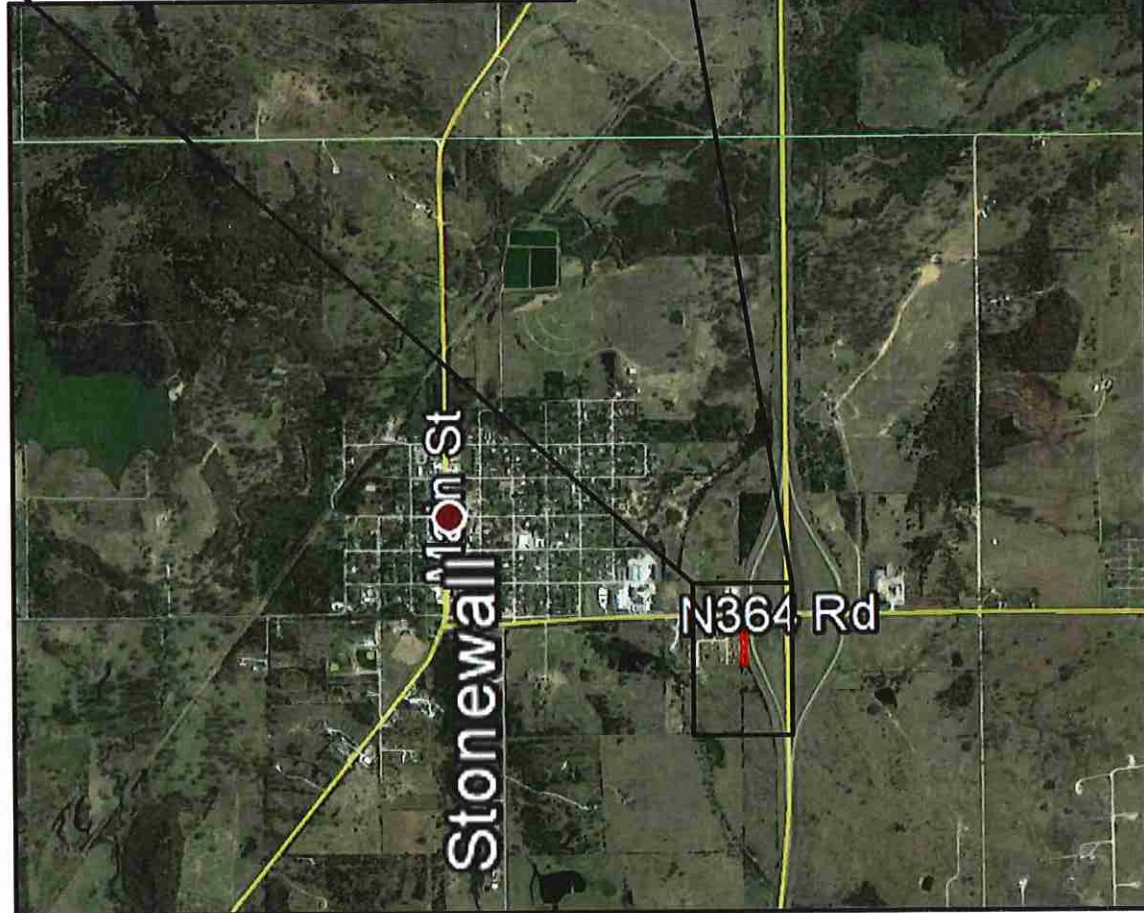
LOCATION: Located on the north side of SH-3 with the intersection of
N-S 364 Rd. south of Stonewall, OK.

In 1983, the Oklahoma Department of Transportation acquired in fee title as partial takings of 53.69 acres of right-of-way and access rights for the construction of State Highway No. 3 on the above referenced project.

The Department received a request from Marvin Cross requesting the Department to dispose of any excess portions of Parcels 49 & 50 on the above referenced project. Marvin Cross owns the abutting property to the west and wants to construct a new driveway into his property. The Department has determined that 0.68 acres of right-of-way and access rights on Parcels 49 & 50 is surplus to the Department's needs.

Marvin Cross has accepted the Department's individual offer for the 0.68 acres of right-of-way and access rights based on the current fair market value of \$7,100.00.

We recommend approval of this sale.



Limits of No Access	Existing Right-of-Way	Requested Area	Easement
---------------------	-----------------------	----------------	----------

OKLAHOMA
Transportation

LOCATION MAP

SH-3 | 327 (02) Part 2 | Pontotoc County

SUBJECT PROPERTY: PART OF PARCELS 49 AND 50
SURPLUS LAND: ≈ 0.68 ACRES
SALE PRICE: \$7,100.00

FOR PRESENTATION AT THE DECEMBER 7, 2020 COMMISSION MEETING

AGENDA ITEM NO.: 151(b)

SUBJECT: Land Sale, District VIII, I-244-2(55)094, Part of Parcel 233, Lot 3, Block 8, Owen Addition, Tulsa County.

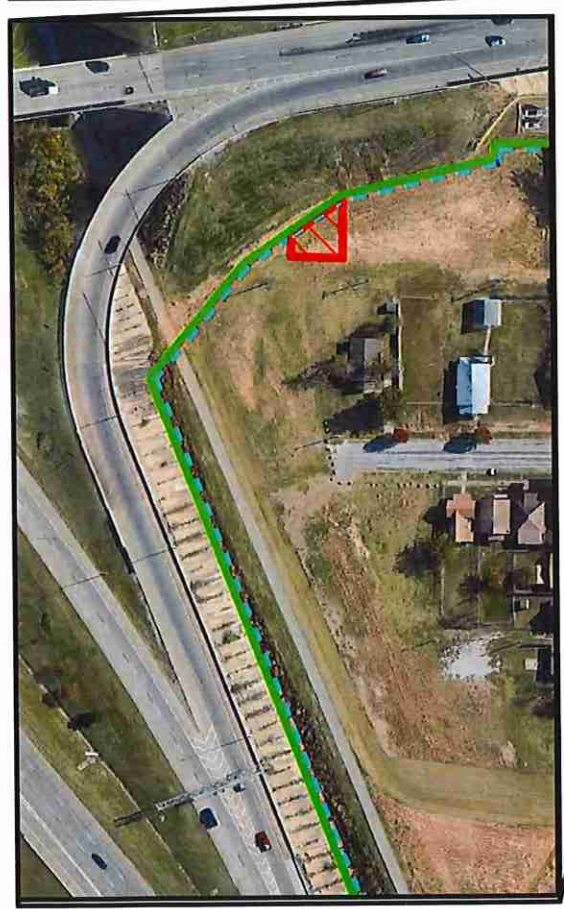
LOCATION: Located at the southwest intersection of the northwest quadrant of the I-244 Inner Dispersal Loop (IDL) in the City of Tulsa

In 1966, the Oklahoma Department of Transportation acquired in fee as a total taking of 0.13 acres as right-of-way and access rights to construct I-244 on the above referenced project.

The Department received a request from Quapaw Investments, LLC requesting the Department to dispose of a portion of Parcel 233 on the above referenced project. Quapaw Investments, LLC owns the abutting property and would like to expand their business. The Department has determined that 0.05 acres of Parcel 233 are surplus to the Department's needs. The Department will retain the rights of access to I-244.

Bid packets were prepared and sent out with the minimum bid based on the current fair market value of \$1,275.00 for the 0.05 acre property. On November 12, 2020 the Department received and opened one (1) bid. The Department accepted the high bid of \$2,500.00 for the 0.05 acres from Quapaw Investments, LLC.

We recommend approval of this sale.



Limits of No Access

Existing Right-of-Way

Requested Area

Easement

OKLAHOMA
Transportation SH-51 | 1-244-5(055)94 | Tulsa County

LOCATION MAP

SUBJECT PROPERTY: PART OF PARCEL 233
SURPLUS LAND: ≈ 0.05 ACRES
SALE PRICE: \$2,500.00

FOR PRESENTATION AT THE COMMISSION MEETING ON DECEMBER 7, 2020

AGENDA ITEM NO: 152

SUBJECT: Programming Item

Tulsa County, Commission District VIII

The Department requests approval to program a project to repair vehicle impact damage to 65th W. Avenue over US-64, located 11.2 miles east of the Osage County line. The estimated cost of this project is \$40,000 using State-Aid Funds. This project can be ready for a May 2021 letting. The party responsible for the damage is known.

APPROVAL IS RECOMMENDED

FOR PRESENTATION AT THE COMMISSION MEETING ON DECEMBER 7, 2020

AGENDA ITEM NO: 153

SUBJECT: Engineering Contracts

a) Statewide – All Districts - On-Demand Environmental Studies (CI-2253)

The Department has selected nine (9) firms to provide Environmental Studies. These firms may be utilized on an as-needed basis in support of the Department's staff.

CI-2253A	Able Consulting
CI-2253B	C.H. Guernsey & Company
CI-2253C	CC Environmental
CI-2253D	Cox McLain Environmental Consulting, Inc.
CI-2253E	CP&Y, Inc.
CI-2253F	Freese and Nichols, Inc.
CI-2253G	Garver, LLC
CI-2253H	Olsson, Inc.
CI-2253J	TEIM Design, PLLC

The aggregate not to exceed amount for these nine (9) contracts is \$1,800,000.00 and will be task driven for the on-call services and agreed upon by the Consulting Firm and Department as needed.

b) Bryan County – Commission District II (CI-2262)

The Department has selected Garver, LLC to provide preliminary engineering for US-70 over Lake Texoma (Roosevelt Bridge). Services to include survey, environmental, geotechnical investigations and preliminary engineering.

CI-2262	Garver, LLC
Total Not to Exceed Amount	\$3,538,938.00

Project JP-33873(05) (06) is included in the 8 year construction work plan with a scheduled let date in FFY 2025. The total estimate for construction for this project is \$150,000,000.00

c) Jackson County – Commission District V (CI-2223C)

The Department has selected EST, Inc. to prepare construction plans for SH-19: over the north fork of the Red River located at the Jackson/Kiowa county line. Services to include geotechnical investigations, pavement design, preliminary and final design and will culminate in the submittal of plans, specifications and estimates, (PS&E).

CI-2223C	EST, Inc.
Total Not to Exceed Amount	\$540,200.00

Project JP-30997(04) is included in the 8 year construction work plan with a scheduled let date in FFY 2023. The total estimate for construction for this project is \$9,718,001.00

APPROVAL IS RECOMMENDED

FOR PRESENTATION AT THE COMMISSION MEETING ON DECEMBER 7, 2020

AGENDA ITEM NO: 154

SUBJECT: Engineering Contract Supplements

a) Pottawatomie County – Commission District III (CI-2012, Supplement 6)

The Department previously authorized CEC Corporation to prepare construction plans for I-40 from Oklahoma County Line, east 2.5 miles; I-40 from 2.5 miles east of the Oklahoma County Line, east 2.2 miles and I-40 from 4.7 miles east of the Oklahoma County Line, east 2.7 miles. This supplement is for additional engineering to develop final construction plans.

CI-2012	CEC Corporation
Supplement Not to Exceed Amount	\$215,352.00

This brings the total engineering contract cost, including this supplement to \$3,358,311.00

JP-21007(07)(10)(13) are included in the 8 year construction work plan with a scheduled let date in FFY 2022, 2023, 2026. Total estimate for construction of the project is \$81,040,534.00

b) Oklahoma County – Commission District IV (CI-1060, Supplement 7)

The Department previously authorized Poe and Associates to perform preliminary engineering and to prepare final design plans for Reconstruction of the I-35/I-240 interchange in Oklahoma City. This supplement is for additional engineering to develop final construction plans.

CI-1060	Poe and Associates, Inc.
Supplement Not to Exceed Amount	\$2,000,718.00

This brings the total engineering contract cost, including this supplement to \$9,595,947.00

JP-09032(05)(06)(07)(08) are included in the 8 year construction work plan with a scheduled let date in FFY 2021, 2023, 2025, 2021. Total estimate for construction of the project is \$116,016,765.00

c) **Payne County – Commission District IV (CI-1825, Supplement 4)**

The Department previously authorized Tetra Tech, Inc. to perform preliminary engineering and to prepare final design plans for SH-51: from junction I-35, east to SH-86. On eastbound SH-51 from SH-86, extend east 10 miles. This supplement is for additional engineering to develop final construction plans.

CI-1825	Tetra Tech, Inc.
Supplement Not to Exceed Amount	\$395,000.00

This brings the total engineering contract cost, including this supplement to \$2,122,818.00

JP-31005(04) (05) are included in the 8 year construction work plan with a scheduled let date in FFY 2024. Total estimate for construction of the project is \$18,478,302.00

APPROVAL IS RECOMMENDED

Change Orders with Cumulative Total of \$75,000 or Less (Information Only)

DECEMBER 07, 2020 Commission Meeting

ITEM	COUNTY	PROJECT NUMBER	FED OVER	CONTRACT	JPN	CHANGE ORDER	UNDER/ OVER RUN
155A	ADAIR	SSP-201C(035)PM / SBR-201C(001)SB	<input type="checkbox"/>	180222	2794904	001	\$0.00
155B	ALFALFA	STP-102B(025)SS	<input type="checkbox"/>	200001	1766810	002	\$43,227.00
155C	ATOKA	STP-203C(070)3B	<input type="checkbox"/>	200221	3409404	002	\$2,400.00
155D	BEAVER	SSR-204B(029)SR	<input type="checkbox"/>	200048	3339904	001	\$5,994.12
155E	BLAINE	STP-206C(044)SS	<input type="checkbox"/>	190340	2791804	002	\$13,551.15
155F	BLAINE	CIRB-206D(049)RB	<input type="checkbox"/>	200004	3004404	002	\$18,038.00
155G	CADDO	STP-208B(072)3P	<input type="checkbox"/>	200142	3388304	001	\$31,719.60
155H	CANADIAN	NHPP-209N(051)SS	<input type="checkbox"/>	190312	2700404	003	\$38,062.81
155I	CLEVELAND	STP-214B(068)AG / STP-214B(069)AG	<input type="checkbox"/>	190195	2930004	003	\$18,858.46
155J	CLEVELAND	STP-214B(068)AG / STP-214B(069)AG	<input type="checkbox"/>	190195	2930004	004	\$10,370.03
155K	CUSTER	SBR-220C(066)SB	<input type="checkbox"/>	200101	3179304	002	\$30,000.00
155L	CUSTER	MC-220F(073)MD	<input type="checkbox"/>	200218	3477104	001	\$2,400.00
155M	GREER	STP-228B(017)PM	<input type="checkbox"/>	190354	2950904	002	\$47,915.65
155N	HARMON	STP-229C(011)PM	<input type="checkbox"/>	170225	2789804	002	\$63,916.72
155O	JACKSON	STP-233D(041)CI	<input type="checkbox"/>	190355	3114904	002	\$7,711.20
155P	JOHNSTON	STP-235C(038)PM	<input type="checkbox"/>	200045	3184104	002	\$7,274.43
155Q	KAY	STP-236B(062)UR	<input type="checkbox"/>	190198	3368704	002	\$10,017.35
155R	KINGFISHER	STP-NBIP(523)SS	<input type="checkbox"/>	190360	3268704	001	\$17,500.00
155S	LOGAN	SSR-242B(074)SR / SSR-242B(075)SR	<input type="checkbox"/>	200015	3380304	002	-\$3,504.00
155T	NOBLE	STP-252F(071)PM	<input type="checkbox"/>	200215	2423920	001	\$24,253.93
155U	OSAGE	SBR-257N(080)SB	<input type="checkbox"/>	200167	3273204	001	\$58,350.00
155V	PITTSBURG	SBR-261B(090)SB	<input type="checkbox"/>	190369	2973804	001	\$9,703.42
155W	PITTSBURG	SBR-261B(090)SB	<input type="checkbox"/>	190369	2973804	002	\$1,393.28
155X	PITTSBURG	SSP-013N(176)PM	<input type="checkbox"/>	190370	3432904	002	\$73,179.81
155Y	ROGERS	STP-266B(072)IG	<input type="checkbox"/>	190328	3331404	003	\$4,769.44
155Z	SEQUOYAH	STP-268C(056)CI	<input type="checkbox"/>	190257	3239604	001	\$9,660.00
155AA	TEXAS	STP-270C(039)CI	<input type="checkbox"/>	200213	2864904	001	-\$7,920.00
155BB	TULSA	ACNHPP-2440-(017)FP	<input type="checkbox"/>	180148	2885904	004	\$6,116.00
155CC	TULSA	STP-272B(266)PM	<input type="checkbox"/>	190335	3188504	003	\$51,000.00

Change Orders with Cumulative Total of \$75,000 or Less (Information Only)

December 07, 2020 Commission Meeting

Project Number:	SSP-201C(035)PM / SBR-201C(001)SB		CO APPROVAL:	Oct. 28, 2020	AGENDA ITEM 155A
			Contract ID:	180222	
Contractor :	PARADIGM CONSTRUCTION & ENGINEERING, INC		Job Piece No.:	27949(04)	
			Highway No.:	SH-51/SH-100	
Designer:	HOLLOWAY, UPDIKE AND BELLEN, INC.		Div. / County.:	01 / ADAIR	
Description:	BRIDGE AND APPROACHES AND BRIDGE REHABILITATION SH-51: OVER MULBERRY HOLLOW, 4.3 MILES NORTHWEST OF US-59. SH-100: OVER RUSSELL BRANCH CREEK, 4.5 MILES EAST OF US-59. PROJECT LENGTH = 0.235 MILE				
Contract Amount:	\$4,787,528.40	Funds Available:	\$4,787,528.40	Funds Paid(%) :	99%
Change Order	1	Original Time Used:	97%	Revised Time Used:	97%

Change Order No. 1 approves a supplemental agreement resulting in no additional cost to the contract.

Site Requirement: This change provides for the utilization of painted traffic stripe in lieu of the removable pavement marking tape as planned due to concerns with the marking tape staying in place throughout construction.

NEW ITEM				\$2,401.50
Construction Traff. Str. (Paint) (4" Wide)	8,005.00 LF		\$0.30 /LF	\$2,401.50
UNDERRUN ITEM				-\$2,401.50
Removable Pavement Marking Tape (4" Wide)	-8,005.00 LF		\$0.30 /LF	-\$2,401.50

CHANGE ORDER ACTIONS						
CHANGE ORDER NO.	(+) Overrun (-) Underrun Amount (\$)	%	Appropriated Amount (\$)	%	Supplemental Agreement Amount(\$)	%
1	\$0.00	0.00%	\$0.00	0.00%	\$0.00	0.00%
TOTAL	\$0.00	0.00%	\$0.00	0.00%	\$0.00	0.00%

Change Orders with Cumulative Total of \$75,000 or Less (Information Only)

December 07, 2020 Commission Meeting

Project Number:	STP-102B(025)SS		CO APPROVAL:	Oct. 26, 2020	AGENDA ITEM
			Contract ID:	200001	155B
Contractor :	THE CUMMINS CONSTRUCTION CO., INC.		Job Piece No.:	17668(10)	
			Highway No.:	SH-8/SH-45	
Designer:	OKLA. DEPT. OF TRANSPORTATION		Div. / County.:	06 / ALFALFA	
Description:	GRADE, DRAIN, SURFACE, AND BRIDGE SH-8/SH-45: SH-8, FROM 0.2 MILES NORTH OF SH-45 EXTEND SOUTH NEAR CARMEN. SH-45, FROM SH-8 EXTEND WEST IN CARMEN. PROJECT LENGTH = 2.247 MILES				
Contract Amount:	\$9,764,596.36	Funds Available:	\$9,807,823.36	Funds Paid(%):	12%
Change Order	2	Original Time Used:	32%	Revised Time Used:	32%

Change Order No. 2 approves a supplemental agreement and an additional appropriation in the amount of \$43,227.00.

Site Requirement: This change provides payment for the 6-inch HDPE Pipe pay item required to bore a water line at Bridge A in lieu of trenching PVC pipe as planned due to standing water and saturated soils; for the Class AA concrete pay item required to complete Structure No. 12 in lieu of Class A concrete as planned due to a revision after letting that corrected the structure length and quantities; and for the bore and jack 16-inch casing pay item required to install a sewer line as specified due to being unable to construct the active sewer line half at a time as planned. This change provides for the painted traffic striping and flex tab pay items required to provide temporary delineation during construction in lieu of multi-polymer striping as stated in the plans.

NEW ITEMS	\$165,612.00		
Class AA Concrete	84.00 CY	\$550.00 /CY	\$46,200.00
Construction Traff. Str. (Paint) (4" Wide)	34,800.00 LF	\$0.14 /LF	\$4,872.00
Const. Zone Pav. Mkrs (Flex Tab) Typ. 2-1	1,100.00 EA	\$0.90 /EA	\$990.00
6" HDPE Pipe (Bored)	950.00 LF	\$75.00 /LF	\$71,250.00
Bore and Jack 16" Casing	180.00 LF	\$235.00 /LF	\$42,300.00
UNDERRUN ITEMS	-\$122,385.00		
Class A Concrete	-84.00 CY	\$460.00 /CY	-\$38,640.00
Traffic Stripe (Multi-Polymer) (4" Wide)	-34,800.00 LF	\$0.55 /LF	-\$19,140.00
16" Steel Casing	-180.00 LF	\$161.00 /LF	-\$28,980.00
6" Polyvinyl Chloride (PVC) Pipe	-950.00 LF	\$37.50 /LF	-\$35,625.00

CHANGE ORDER ACTIONS						
CHANGE ORDER NO.	(+) Overrun (-) Underrun Amount (\$)	%	Appropriated Amount (\$)	%	Supplemental Agreement Amount(\$)	%
1	\$0.00	0.00%	\$0.00	0.00%	\$0.00	0.00%
2	\$43,227.00	0.44%	\$43,227.00	0.44%	\$43,227.00	0.44%
TOTAL	\$43,227.00	0.44%	\$43,227.00	0.44%	\$43,227.00	0.44%

Change Orders with Cumulative Total of \$75,000 or Less (Information Only)

December 07, 2020 Commission Meeting

Project Number:	STP-203C(070)3B	CO APPROVAL:	Oct. 23, 2020	AGENDA ITEM
		Contract ID:	200221	155C
Contractor :	HUB CONSTRUCTION, INC.	Job Piece No.:	34094(04)	
		Highway No.:	SH-131	
Designer:	OKLA. DEPT. OF TRANSPORTATION	Div. / County.:	02 / ATOKA	
Description:	JOINT SEAL/REPAIR SH-131: OVER NORTH BOGGY CREEK, 3.6 WEST OF THE US-69 JUNCTION NEAR WARDVILLE. PROJECT LENGTH = 0.000 MILE			
Contract Amount:	\$480,099.54	Funds Available:	\$482,499.54	Funds Paid(%): 59%
Change Order	2	Original Time Used:	56%	Revised Time Used: 56%

Change Order No. 2 approves a supplemental agreement and an additional appropriation in the amount of \$2,400.00.

Engineering: This change provides payment for the painted traffic stripe pay item required to complete the project as specified due to this item being in advertently omitted from the plans.

NEW ITEM	\$2,400.00
Traffic Stripe (Paint) (4" Wide)	4,000.00 LF \$0.60 /LF \$2,400.00

CHANGE ORDER ACTIONS						
CHANGE ORDER NO.	(+) Overrun (-) Underrun Amount (\$)	%	Appropriated Amount (\$)	%	Supplemental Agreement Amount(\$)	%
1	\$0.00	0.00%	\$0.00	0.00%	\$0.00	0.00%
2	\$2,400.00	0.50%	\$2,400.00	0.50%	\$2,400.00	0.50%
TOTAL	\$2,400.00	0.50%	\$2,400.00	0.50%	\$2,400.00	0.50%

Change Orders with Cumulative Total of \$75,000 or Less (Information Only)

December 07, 2020 Commission Meeting

Project Number:	SSR-204B(029)SR	CO APPROVAL:	Nov. 04, 2020	AGENDA ITEM	
		Contract ID:	200048	155D	
Contractor :	J & R SAND COMPANY, INC.	Job Piece No.:	33399(04)		
		Highway No.:	US-83		
Designer:	OKLA. DEPT. OF TRANSPORTATION	Div. / County.:	06 / BEAVER		
Description:	RESURFACE (ASPHALT) US-83: FROM THE TEXAS STATE LINE, EXTEND NORTH NEAR BRYANS CORNER. PROJECT LENGTH = 7.000 MILES				
Contract Amount:	\$2,514,617.50	Funds Available:	\$2,520,611.62	Funds Paid(%) :	94%
Change Order	1	Original Time Used:	32%	Revised Time Used:	32%

Change Order No. 1 approves a supplemental agreement and an additional appropriation in the amount of \$5,994.12.

Site Requirement: This change provides payment for the painted traffic stripe pay item required to provide temporary delineation down the centerline of pavement due to an upcoming project that will install centerline rumblestrip and multi-polymer striping.

NEW ITEM	\$5,994.12
Traffic Stripe (Paint) (4" Wide)	28,680.00 LF \$0.21 /LF \$5,994.12

CHANGE ORDER ACTIONS						
CHANGE ORDER NO.	(+) Overrun (-) Underrun Amount (\$)	%	Appropriated Amount (\$)	%	Supplemental Agreement Amount(\$)	%
1	\$5,994.12	0.24%	\$5,994.12	0.24%	\$5,994.12	0.24%
TOTAL	\$5,994.12	0.24%	\$5,994.12	0.24%	\$5,994.12	0.24%

Change Orders with Cumulative Total of \$75,000 or Less (Information Only)

December 07, 2020 Commission Meeting

Project Number:	STP-206C(044)SS		CO APPROVAL:	Nov. 02, 2020	AGENDA ITEM 155E
			Contract ID:	190340	
Contractor :	HASKELL LEMON CONSTRUCTION CO.		Job Piece No.:	27918(04)	
			Highway No.:	SH-8	
Designer:	OKLA. DEPT. OF TRANSPORTATION		Div. / County.:	05 / BLAINE	
Description:	BRIDGE AND APPROACHES SH-8: OVER SALT CREEK, 7.3 MILES SOUTH OF THE SH-51 JUNCTION NEAR HITCHCOCK. PROJECT LENGTH = 0.226 MILE				
Contract Amount:	\$2,390,112.46	Funds Available:	\$2,446,863.84	Funds Paid(%) :	94%
Change Order	2	Original Time Used:	92%	Revised Time Used:	92%

Change Order No. 2 approves a supplemental agreement and an additional appropriation in the amount of \$13,551.15.

Site Requirement: This change provides payment for the additional work required to remove and replace a corrugated steel pipe side drain on the South end of the project due to damage sustained by vehicles turning around at the closed road signs; for the overrun of the sealer crack preparation and sealer crack resin pay items required to repair cracks discovered at the final inspection; and for the remobilization required to install additional riprap for permanent erosion control in the ditches approaching the creek due to discovering erosion issues after substantial completion.

NEW ITEMS				\$12,285.00
Mobilization (Remobilization)	1.00 LS	\$8,700.00 /LS		\$8,700.00
18" Corr. Galv. Steel Pipe	60.00 LF	\$59.75 /LF		\$3,585.00
OVERRUN ITEMS				\$1,266.15
Sealer Resin	2.41 GAL	\$154.50 /GAL		\$372.35
Sealer Crack Preparation	218.00 LF	\$4.10 /LF		\$893.80

CHANGE ORDER ACTIONS						
CHANGE ORDER NO.	(+ Overrun - Underrun Amount (\$)	%	Appropriated Amount (\$)	%	Supplemental Agreement Amount(\$)	%
1	\$43,200.23	1.81%	\$43,200.23	1.81%	\$973.32	0.04%
2	\$13,551.15	0.57%	\$13,551.15	0.57%	\$12,285.00	0.51%
TOTAL	\$56,751.38	2.37%	\$56,751.38	2.37%	\$13,258.32	0.55%

Change Orders with Cumulative Total of \$75,000 or Less (Information Only)

December 07, 2020 Commission Meeting

Project Number:	CIRB-206D(049)RB	CO APPROVAL:	Oct. 20, 2020	AGENDA ITEM	
		Contract ID:	200004	155F	
Contractor :	K & R BUILDERS, INC.	Job Piece No.:	30044(04)		
		Highway No.:	COUNTY ROAD (NS-251)		
Designer:	CED #7	Div. / County.:	05 / BLAINE		
Description:	BRIDGE AND APPROACHES COUNTY ROAD (NS-251): OVER WEAVER CREEK, 1.9 MILES SOUTH OF THE US-270 JUNCTION NEAR WATONGA. PROJECT LENGTH = 0.123 MILE				
Contract Amount:	\$524,788.65	Funds Available:	\$542,826.65	Funds Paid(%) :	97%
Change Order	2	Original Time Used:	99%	Revised Time Used:	99%

Change Order No. 2 approves an additional appropriation in the amount of \$18,038.00.

Site Requirement: This change provides payment for the overrun of the furnished and driven steel piling pay items required to complete this bridge as specified due to the required subsurface layer needed to achieve the pile load capacity at Abutment No. 2 being deeper than planned.

OVERRUN ITEMS				\$18,038.00
Piles, Furnished (HP 10 x 42)	203.57 LF	\$35.00 /LF		\$7,124.95
Piles, Driven (HP 10 x 42)	203.57 LF	\$15.00 /LF		\$3,053.55
Sheet Piling, Furnished	21.10 SY	\$101.50 /SY		\$2,141.65
Sheet Piling, Driven	21.10 SY	\$43.50 /SY		\$917.85
Pile Splice, H-Pile (Non-Biddable)	12.00 EA	\$400.00 /EA		\$4,800.00

CHANGE ORDER ACTIONS						
CHANGE ORDER NO.	(+) Overrun (-) Underrun Amount (\$)	%	Appropriated Amount (\$)	%	Supplemental Agreement Amount(\$)	%
1	\$0.00	0.00%	\$0.00	0.00%	\$0.00	0.00%
2	\$18,038.00	3.44%	\$18,038.00	3.44%	\$0.00	0.00%
TOTAL	\$18,038.00	3.44%	\$18,038.00	3.44%	\$0.00	0.00%

Change Orders with Cumulative Total of \$75,000 or Less (Information Only)

December 07, 2020 Commission Meeting

Project Number:	STP-208B(072)3P	CO APPROVAL:	Oct. 22, 2020	AGENDA ITEM
		Contract ID:	200142	155G
Contractor :	T & G CONSTRUCTION, INC.	Job Piece No.:	33883(04)	
		Highway No.:	US-62	
Designer:	OKLA. DEPT. OF TRANSPORTATION	Div. / County.:	07 / CADDO	
Description:	RESURFACE (ASPHALT) US-62: FROM 6.3 MILES EAST OF THE SH-9 JUNCTION, EXTEND EAST THEN NORTH IN ANADARKO. PROJECT LENGTH = 1.620 MILES			
Contract Amount:	\$735,101.05	Funds Available:	\$766,820.65	Funds Paid(%) : 96%
Change Order	1	Original Time Used:	31%	Revised Time Used: 31%

Change Order No. 1 approves a supplemental agreement and an additional appropriation in the amount of \$31,719.60.

Site Requirement: This change provides payment for the video detection system pay item required to replace the existing loop detection system due to being damaged during milling operations.

NEW ITEM		\$31,719.60
Detection System (Video)	1.00 LS	\$31,719.60 /LS
		\$31,719.60

CHANGE ORDER ACTIONS						
CHANGE ORDER NO.	(+) Overrun (-) Underrun Amount (\$)	%	Appropriated Amount (\$)	%	Supplemental Agreement Amount(\$)	%
1	\$31,719.60	4.31%	\$31,719.60	4.31%	\$31,719.60	4.31%
TOTAL	\$31,719.60	4.31%	\$31,719.60	4.31%	\$31,719.60	4.31%

Change Orders with Cumulative Total of \$75,000 or Less (Information Only)

December 07, 2020 Commission Meeting

Project Number:	NHPP-209N(051)SS	CO APPROVAL:	Oct. 20, 2020	AGENDA ITEM
		Contract ID:	190312	155H
Contractor :	SHERWOOD CONSTRUCTION CO., INC.	Job Piece No.:	27004(04)	
		Highway No.:	US-81 (I-40B)	
Designer:	CEC CORPORATION	Div. / County.:	04 / CANADIAN	
Description:	BRIDGE AND APPROACHES US-81 (I-40B): OVER THE UNION PACIFIC RAILROAD, 1.1 MILES NORTHWEST OF THE SH-66 JUNCTION IN EL RENO. PROJECT LENGTH = 0.452 MILE			
Contract Amount:	\$9,983,088.28	Funds Available:	\$10,042,319.94	Funds Paid(%) : 49%
Change Order	3	Original Time Used:	40%	Revised Time Used: 40%

Change Order No. 3 approves a supplemental agreement and an additional appropriation in the amount of \$38,062.81.

Site Requirement: This change provides payment for the overrun of the temporary roadway lighting pay item required to enhance night time delineation and visibility for the safety of the traveling public due to the need to have two lighting assemblies instead of only one as planned; and for the clearing and grubbing and barbed wire fence pay items required to clear sight lines and replace damaged fence down the railroad track from the detour crossing due to a request by the Union Pacific Railroad.

NEW ITEMS			\$7,749.01
Clearing and Grubbing (Additional)	1.00 LSUM	\$5,329.01 /LSUM	\$5,329.01
Fence-Style SWF (5 Barbed Wire)	220.00 LF	\$11.00 /LF	\$2,420.00
OVERRUN ITEM			\$30,313.80
Temporary Roadway Lighting Assembly	330.00 LMDY	\$91.86 /LMDY	\$30,313.80

CHANGE ORDER ACTIONS						
CHANGE ORDER NO.	(+) Overrun (-) Underrun Amount (\$)	%	Appropriated Amount (\$)	%	Supplemental Agreement Amount(\$)	%
1	\$18,668.85	0.19%	\$18,668.85	0.19%	\$7,648.00	0.08%
2	\$2,500.00	0.03%	\$2,500.00	0.03%	\$2,500.00	0.03%
3	\$38,062.81	0.38%	\$38,062.81	0.38%	\$7,749.01	0.08%
TOTAL	\$59,231.66	0.59%	\$59,231.66	0.59%	\$17,897.01	0.18%

Change Orders with Cumulative Total of \$75,000 or Less (Information Only)

December 07, 2020 Commission Meeting

Project Number:	STP-214B(068)AG / STP-214B(069)AG		CO APPROVAL:	Oct. 22, 2020	AGENDA ITEM 155I
			Contract ID:	190195	
Contractor :	SILVER STAR CONSTRUCTION COMPANY, INC.		Job Piece No.:	29300(04)	
			Highway No.:	CITY STREET	
Designer:	ATKINS	Div. / County.:	03 / CLEVELAND		
Description:	GRADE, DRAIN, SURFACE, AND TRAFFIC SIGNAL CITY STREET (24TH AVENUE): FROM LINDSEY STREET, EXTEND NORTH IN THE CITY OF NORMAN. PROJECT LENGTH = 1.795 MILES				
Contract Amount:	\$9,437,000.00	Funds Available:	\$9,480,148.99	Funds Paid(%) :	59%
Change Order	3	Original Time Used:	97%	Revised Time Used:	81%

Change Order No. 3 approves a supplemental agreement and an additional appropriation in the amount of \$18,858.46.

Site Requirement: This change provides payment for the additional work required to plug an abandoned water well discovered during construction; and for the additional work required to connect two existing pipe underdrain outlets from the nearby high school sports complex into a new concrete drainage pipe.

NEW ITEMS			\$18,858.46
Plug Abandoned Well	544.00 LF	\$21.63 /LF	\$11,765.09
Construction Miscellaneous (Pipe Underdrain Tie-In)	1.00 LSUM	\$7,093.37 /LSUM	\$7,093.37

CHANGE ORDER ACTIONS						
CHANGE ORDER NO.	(+) Overrun (-) Underrun Amount (\$)	%	Appropriated Amount (\$)	%	Supplemental Agreement Amount(\$)	%
1	-\$0.10	0.00%	\$0.00	0.00%	\$0.00	0.00%
2	\$13,920.50	0.15%	\$13,920.50	0.15%	\$13,920.50	0.15%
3	\$18,858.46	0.20%	\$18,858.46	0.20%	\$18,858.46	0.20%
4	\$10,370.03	0.11%	\$10,370.03	0.11%	\$10,370.03	0.11%
TOTAL	\$43,148.89	0.46%	\$43,148.99	0.46%	\$43,148.99	0.46%

Change Orders with Cumulative Total of \$75,000 or Less (Information Only)

December 07, 2020 Commission Meeting

Project Number:	STP-214B(068)AG / STP-214B(069)AG		CO APPROVAL:	Nov. 10, 2020	AGENDA ITEM 155J
			Contract ID:	190195	
Contractor :	SILVER STAR CONSTRUCTION COMPANY, INC.		Job Piece No.:	29300(04)	
			Highway No.:	CITY STREET	
Designer:	ATKINS		Div. / County.:	03 / CLEVELAND	
Description:	GRADE, DRAIN, SURFACE, AND TRAFFIC SIGNAL CITY STREET (24TH AVENUE); FROM LINDSEY STREET, EXTEND NORTH IN THE CITY OF NORMAN. PROJECT LENGTH = 1.795 MILES				
Contract Amount:	\$9,437,000.00	Funds Available:	\$9,480,148.99	Funds Paid(%) :	64%
Change Order	4	Original Time Used:	101%	Revised Time Used:	83%

Change Order No. 4 approves a supplemental agreement and an additional appropriation in the amount of \$10,370.03.

Site Requirement: This change provides payment to reimburse the contractor for the payment of a claim issued by AT&T due to damaging a utility line during construction; for the CLSM backfill pay item required to plug an abandoned 18-inch drainage pipe due to discovering during construction that it was more deteriorated than expected; and for the mowing pay item required to maintain the right-of-way during construction due to a request by the City of Norman. Funding for the claim will be non-participating in nature.

NEW ITEMS			\$1,550.00
Mowing	4.00 AC	\$200.00 /AC	\$800.00
CLSM Backfill	3.00 CY	\$250.00 /CY	\$750.00
NEW ITEM (NON-PARTICIPATING)			\$8,820.03
Constr. Misc. (Utility Settlement Reimbursement)	1.00 LSUM	\$8,820.03 /LSUM	\$8,820.03

CHANGE ORDER ACTIONS						
CHANGE ORDER NO.	(+) Overrun (-) Underrun Amount (\$)	%	Appropriated Amount (\$)	%	Supplemental Agreement Amount(\$)	%
1	-\$0.10	0.00%	\$0.00	0.00%	\$0.00	0.00%
2	\$13,920.50	0.15%	\$13,920.50	0.15%	\$13,920.50	0.15%
3	\$18,858.46	0.20%	\$18,858.46	0.20%	\$18,858.46	0.20%
4	\$10,370.03	0.11%	\$10,370.03	0.11%	\$10,370.03	0.11%
TOTAL	\$43,148.89	0.46%	\$43,148.99	0.46%	\$43,148.99	0.46%

Change Orders with Cumulative Total of \$75,000 or Less (Information Only)

December 07, 2020 Commission Meeting

Project Number:	SBR-220C(066)SB		CO APPROVAL:	Nov. 02, 2020	AGENDA ITEM
			Contract ID:	200101	
Contractor :	HASKELL LEMON CONSTRUCTION CO.		Job Piece No.:	31793(04)	155K
			Highway No.:	SH-73	
Designer:	WHITE ENGINEERING ASSOCIATES, INC.		Div. / County.:	05 / CUSTER	
Description:	BRIDGE REHABILITATION SH-73: OVER LITTLE PANTHER CREEK, 5.7 MILES EAST OF THE SH-34 JUNCTION NEAR FOSS LAKE. PROJECT LENGTH = 0.170 MILE				
Contract Amount:	\$1,010,954.05	Funds Available:	\$1,042,430.35	Funds Paid(%) :	92%
Change Order	2	Original Time Used:	81%	Revised Time Used:	78%

Change Order No. 2 approves an additional appropriation in the amount of \$30,000.00.

Site Requirement: This change provides payment for the early completion incentive earned by the contractor for achieving substantial completion on this project prior to the time allowed in the contract.

NEW ITEM

\$30,000.00

Incentive for Early Completion

10.00 DAY

\$3,000.00 /DAY

\$30,000.00

CHANGE ORDER ACTIONS						
CHANGE ORDER NO.	(+) Overrun (-) Underrun Amount (\$)	%	Appropriated Amount (\$)	%	Supplemental Agreement Amount(\$)	%
1	\$1,476.30	0.15%	\$1,476.30	0.15%	\$0.00	0.00%
2	\$30,000.00	2.97%	\$30,000.00	2.97%	\$0.00	0.00%
TOTAL	\$31,476.30	3.11%	\$31,476.30	3.11%	\$0.00	0.00%

Change Orders with Cumulative Total of \$75,000 or Less (Information Only)

December 07, 2020 Commission Meeting

Project Number:	MC-220F(073)MD	CO APPROVAL:	Nov. 09, 2020	AGENDA ITEM
		Contract ID:	200218	155L
Contractor :	HASKELL LEMON CONSTRUCTION CO.	Job Piece No.:	34771(04)	
		Highway No.:	SH-33	
Designer:	OKLA. DEPT. OF TRANSPORTATION	Div. / County.:	05 / CUSTER	
Description:	RESURFACE (ASPHALT) SH-33: FROM 3.0 MILES EAST OF THE SH-54 JUNCTION, EXTEND NORTHEAST NEAR THOMAS. PROJECT LENGTH = 7.500 MILES			
Contract Amount:	\$1,921,971.00	Funds Available:	\$1,924,371.00	Funds Paid(%): 42%
Change Order	1	Original Time Used:	15%	Revised Time Used: 15%

Change Order No. 1 approves a supplemental agreement and an additional appropriation in the amount of \$2,400.00.

Site Requirement: This change provides payment for the tack coat pay item required to construct smaller areas such as driveways, pull-off areas, and additional shoulders using conventional methods in lieu of a spray paver as specified.

NEW ITEM	\$2,400.00
Tack Coat	600.00 GAL \$4.00 /GAL \$2,400.00

CHANGE ORDER ACTIONS						
CHANGE ORDER NO.	(+ Overrun - Underrun Amount (\$)	%	Appropriated Amount (\$)	%	Supplemental Agreement Amount(\$)	%
1	\$2,400.00	0.12%	\$2,400.00	0.12%	\$2,400.00	0.12%
TOTAL	\$2,400.00	0.12%	\$2,400.00	0.12%	\$2,400.00	0.12%

Change Orders with Cumulative Total of \$75,000 or Less (Information Only)

December 07, 2020 Commission Meeting

Project Number:	STP-228B(017)PM	CO APPROVAL:	Oct. 30, 2020	AGENDA ITEM
		Contract ID:	190354	155M
Contractor :	FRONTIER BRIDGE, INC.	Job Piece No.:	29509(04)	
		Highway No.:	US-283	
Designer:	OLSSON ASSOCIATES	Div. / County.:	05 / GREER	
Description:	BRIDGE AND APPROACHES US-283: OVER ELM FORK OF RED RIVER AND ELM FORK OVERFLOW, 1.6 MILES AND 1.9 MILES NORTH OF SH-9 WEST NEAR MANGUM. PROJECT LENGTH = 0.625 MILE			
Contract Amount:	\$7,797,408.00	Funds Available:	\$7,845,323.65	Funds Paid(%) : 68%
Change Order	2	Original Time Used:	48%	Revised Time Used: 48%

Change Order No. 2 approves a supplemental agreement and an additional appropriation in the amount of \$47,915.65.

Site Requirement: This change provides payment for the additional work required to remove unforeseen man-made obstructions discovered during construction of Piers 1 and 5 on Bridge A; and for the removal of guardrail pay item required to complete the project as planned due to this pay item being inadvertently omitted from the plans. This change extends the contract time and milestone time six days due to delays caused by the pier obstructions.

NEW ITEMS		\$47,915.65
Removal of Guardrail	1,328.00 LF	\$5.06 /LF \$6,719.68
Construction Miscellaneous (Bridge Pier Obstructions)	1.00 LSUM	\$41,195.97 /LSUM \$41,195.97

CHANGE ORDER ACTIONS						
CHANGE ORDER NO.	(+) Overrun (-) Underrun Amount (\$)	%	Appropriated Amount (\$)	%	Supplemental Agreement Amount(\$)	%
1	\$0.00	0.00%	\$0.00	0.00%	\$0.00	0.00%
2	\$47,915.65	0.61%	\$47,915.65	0.61%	\$47,915.65	0.61%
TOTAL	\$47,915.65	0.61%	\$47,915.65	0.61%	\$47,915.65	0.61%

Change Orders with Cumulative Total of \$75,000 or Less (Information Only)

December 07, 2020 Commission Meeting

Project Number:	STP-229C(011)PM		CO APPROVAL:	Nov. 09, 2020	AGENDA ITEM
			Contract ID:	170225	
Contractor :	SEWELL BROS., INC.		Job Piece No.:	27898(04)	155N
			Highway No.:	SH-30	
Designer:	OKLA. DEPT. OF TRANSPORTATION		Div. / County.:	05 / HARMON	
Description:	BRIDGE AND APPROACHES SH-30: OVER ELM FORK OF RED RIVER, 1.2 MILES SOUTH OF THE BECKHAM COUNTY LINE. PROJECT LENGTH = 0.665 MILE				
Contract Amount:	\$4,064,494.13	Funds Available:	\$4,128,410.85	Funds Paid(%):	98%
Change Order	2	Original Time Used:	105%	Revised Time Used:	92%

Change Order No. 2 approves a supplemental agreement and an additional appropriation in the amount of \$63,916.72.

Site Requirement: This change provides payment for the overrun of the solid slab sodding pay item required to provide adequate permanent erosion control on all disturbed areas of the project due to more area being disturbed than anticipated. This change imposes a unit price reduction for that portion of the solid slab sodding pay item in excess of 125% of the contract amount as allowed by specification due to the significant overrun of this major item of work.

NEW ITEM			-\$3,083.28
Solid Slab Sodding (Unit Price Reduction)	9,635.25 SY	-\$0.32 /SY	-\$3,083.28
OVERRUN ITEM			\$67,000.00
Solid Slab Sodding	16,750.00 SY	\$4.00 /SY	\$67,000.00

CHANGE ORDER ACTIONS						
CHANGE ORDER NO.	(+) Overrun (-) Underrun Amount (\$)	%	Appropriated Amount (\$)	%	Supplemental Agreement Amount(\$)	%
1	\$0.00	0.00%	\$0.00	0.00%	\$0.00	0.00%
2	\$63,916.72	1.57%	\$63,916.72	1.57%	\$0.00	0.00%
TOTAL	\$63,916.72	1.57%	\$63,916.72	1.57%	\$0.00	0.00%

Change Orders with Cumulative Total of \$75,000 or Less (Information Only)

December 07, 2020 Commission Meeting

Project Number:	STP-233D(041)CI	CO APPROVAL:	Nov. 06, 2020	AGENDA ITEM	
		Contract ID:	190355		
Contractor :	SEWELL BROS., INC.	Job Piece No.:	31149(04)	1550	
		Highway No.:	COUNTY ROAD (EW-167)		
Designer:	CED #7	Div. / County.:	05 / JACKSON		
Description:	BRIDGE AND APPROACHES COUNTY ROAD (EW-167): OVER BITTER CREEK, 3.1 MILES WEST OF THE US-283 JUNCTION NEAR ALTUS. PROJECT LENGTH = 0.189 MILE				
Contract Amount:	\$707,827.55	Funds Available:	\$715,538.75	Funds Paid(%):	94%
Change Order	2	Original Time Used:	92%	Revised Time Used:	92%

Change Order No. 2 approves a supplemental agreement and an additional appropriation in the amount of \$7,711.20.

Site Requirement: This change provides payment for the unclassified borrow pay item required to construct the roadway embankment as planned due to a portion of the excavation on the project not being suitable to use.

NEW ITEM			\$7,711.20
Unclassified Borrow	963.90 CY	\$8.00 /CY	\$7,711.20

CHANGE ORDER ACTIONS						
CHANGE ORDER NO.	(+) Overrun (-) Underrun Amount (\$)	%	Appropriated Amount (\$)	%	Supplemental Agreement Amount(\$)	%
1	-\$32,843.91	-4.64%	\$0.00	0.00%	\$0.00	0.00%
2	\$7,711.20	1.09%	\$7,711.20	1.09%	\$7,711.20	1.09%
TOTAL	-\$25,132.71	-3.55%	\$7,711.20	1.09%	\$7,711.20	1.09%

Change Orders with Cumulative Total of \$75,000 or Less (Information Only)

December 07, 2020 Commission Meeting

Project Number:	STP-235C(038)PM	CO APPROVAL:	Nov. 05, 2020	AGENDA ITEM 155P
		Contract ID:	200045	
Contractor :	C3 CONSTRUCTION, INC.	Job Piece No.:	31841(04)	
		Highway No.:	SH-22/SH-99	
Designer:	ATKINS	Div. / County.:	03 / JOHNSTON	
Description:	GRADE, DRAIN, AND SURFACE SH-22/SH-99: SH-22, FROM 0.4 MILES NW OF SH-9 EXTEND SE. SH-99, FROM THE SH-22 JUNCTION, EXTEND NE IN TISHOMINGO. PROJECT LENGTH = 1.842 MILES			
Contract Amount:	\$6,766,067.29	Funds Available:	\$6,774,058.72	Funds Paid(%) : 28%
Change Order	2	Original Time Used:	55%	Revised Time Used: 51%

Change Order No. 2 approves a supplemental agreement and an additional appropriation in the amount of \$7,274.43.

Site Requirement: This change provides payment for the additional work required to lower an existing waterline and reconnect a nearby fire hydrant due to it conflicting with a proposed drainage pipe. This change extends the contract time two days to complete this additional work.

NEW ITEM	\$7,274.43
Fire Hydrant Reset	1.00 EA \$7,274.43 /EA \$7,274.43

CHANGE ORDER ACTIONS						
CHANGE ORDER NO.	(+ Overrun -) Underrun Amount (\$)	%	Appropriated Amount (\$)	%	Supplemental Agreement Amount(\$)	%
1	\$717.00	0.01%	\$717.00	0.01%	\$717.00	0.01%
2	\$7,274.43	0.11%	\$7,274.43	0.11%	\$7,274.43	0.11%
TOTAL	\$7,991.43	0.12%	\$7,991.43	0.12%	\$7,991.43	0.12%

Change Orders with Cumulative Total of \$75,000 or Less (Information Only)

December 07, 2020 Commission Meeting

Project Number:	STP-236B(062)UR		CO APPROVAL:	Nov. 06, 2020	AGENDA ITEM
			Contract ID:	190198	
Contractor :	EVANS & ASSOCIATES CONSTRUCTION CO., INC.		Job Piece No.:	33687(04)	155Q
			Highway No.:	CITY STREET (WEST HI	
Designer:	CABBINESS ENGINEERING, LLC.		Div. / County:	04 / KAY	
Description:	GRADE, SURFACE, WATER LINE, AND EROSION CONTROL CITY STREET (WEST HIGHLAND AVENUE): FROM 1.8 MILES WEST OF THE US-77 JUNCTION, EXTEND EAST IN PONCA CITY. PROJECT LENGTH = 0.288 MILE				
Contract Amount:	\$1,465,586.78	Funds Available:	\$1,480,884.13	Funds Paid(%) :	42%
Change Order	2	Original Time Used:	46%	Revised Time Used:	53%

Change Order No. 2 approves a supplemental agreement and an additional appropriation in the amount of \$10,017.35.

Engineering: This change provides payment for additional traffic control pay items required to complete the project as specified due to these items being inadvertently omitted from the plans.

NEW ITEMS				\$10,017.35
Construction Signs 0 to 6.25 SF	1,820.00	SD	\$0.60 /SD	\$1,092.00
Construction Signs 6.26 SF to 15.99 SF	3,380.00	SD	\$0.90 /SD	\$3,042.00
Channelizer Cones	6,500.00	SD	\$0.30 /SD	\$1,950.00
Pavement Mrkng. Removal (Traf. Strp)	6,165.00	LF	\$0.39 /LF	\$2,404.35
Pavement Marking Removal (Arrows)	3.00	EA	\$27.50 /EA	\$82.50
Pavement Marking Removal (Words)	2.00	EA	\$27.50 /EA	\$55.00
Mobilization (Additional)	1.00	LS	\$1,391.50 /LS	\$1,391.50

CHANGE ORDER ACTIONS						
CHANGE ORDER NO.	(+ Overrun - Underrun Amount (\$)	%	Appropriated Amount (\$)	%	Supplemental Agreement Amount(\$)	%
1	\$0.00	0.00%	\$0.00	0.00%	\$0.00	0.00%
2	\$10,017.35	0.68%	\$10,017.35	0.68%	\$10,017.35	0.68%
TOTAL	\$10,017.35	0.68%	\$10,017.35	0.68%	\$10,017.35	0.68%

Change Orders with Cumulative Total of \$75,000 or Less (Information Only)

December 07, 2020 Commission Meeting

Project Number:	STP-NBIP(523)SS	CO APPROVAL:	Oct. 20, 2020	AGENDA ITEM
		Contract ID:	190360	
Contractor :	MONOKO, LLC	Job Piece No.:	32687(04)	155R
		Highway No.:	US-81	
Designer:	OKLA. DEPT. OF TRANSPORTATION	Div. / County.:	04 / KINGFISHER	
Description:	BRIDGE PAINTING US-81: OVER CIMARRON RIVER, 6.9 MILES NORTH OF THE SH-33 JUNCTION NEAR DOVER. PROJECT LENGTH = 0.00 MILE			
Contract Amount:	\$519,180.20	Funds Available:	\$536,680.20	Funds Paid(%) : 96%
Change Order	1	Original Time Used:	63%	Revised Time Used: 63%

Change Order No. 1 approves a supplemental agreement and an additional appropriation in the amount of \$17,500.00.

Site Requirement: This change provides payment for the additional work required to clean and paint the existing utility brackets due to there being no way to avoid them while painting the structural steel.

NEW ITEM

\$17,500.00

Construction Miscellaneous (Clean & Paint Utility Hangers) 100.00 EA \$175.00 /EA \$17,500.00

CHANGE ORDER ACTIONS						
CHANGE ORDER NO.	(+) Overrun (-) Underrun Amount (\$)	%	Appropriated Amount (\$)	%	Supplemental Agreement Amount(\$)	%
1	\$17,500.00	3.37%	\$17,500.00	3.37%	\$17,500.00	3.37%
TOTAL	\$17,500.00	3.37%	\$17,500.00	3.37%	\$17,500.00	3.37%

Change Orders with Cumulative Total of \$75,000 or Less (Information Only)

December 07, 2020 Commission Meeting

Project Number:	STP-252F(071)PM	CO APPROVAL:	Oct. 15, 2020	AGENDA ITEM	
		Contract ID:	200215		
Contractor :	EURO PAINT, LLC	Job Piece No.:	24239(20)	155T	
		Highway No.:	MULTIPLE LOCATIONS		
Designer:	OKLA. DEPT. OF TRANSPORTATION	Div. / County.:	04 / NOBLE		
Description:	BRIDGE PAINTING I-40/US-60: AT MULTIPLE LOCATIONS IN DIVISION IV. PROJECT LENGTH = 0.000 MILES				
Contract Amount:	\$588,765.46	Funds Available:	\$613,019.39	Funds Paid(%) :	95%
Change Order	1	Original Time Used:	88%	Revised Time Used:	88%

Change Order No. 1 approves a supplemental agreement and an additional appropriation in the amount of \$24,253.93.

Scope: This change provides payment for the unrecoverable expenses and lost overhead incurred by the contractor due to unforeseen delays experienced during construction due to the paint system on Bridge A, Span 3 changing from Category E to Category O with an overcoat system, and due to the BNSF only allowing very small time windows to work; and for the overrun of the construction signs and channelizer cones pay items required to complete the project as specified due to an apparent underestimation of the contract amounts.

NEW ITEM			\$24,216.15
Construction Miscellaneous (Lost Overhead)	24,216.15 LSUM	\$1.00 /LSUM	\$24,216.15
OVERRUN ITEMS			\$37.78
Channelizer Cones	30.00 SD	\$1.25 /SD	\$37.50
Construction Signs 0 to 6.25 SF	8.00 SD	\$0.02 /SD	\$0.16
Construction Signs 16.0 SF to 32.99 SF	6.00 SD	\$0.02 /SD	\$0.12

CHANGE ORDER ACTIONS						
CHANGE ORDER NO.	(+) Overrun (-) Underrun Amount (\$)	%	Appropriated Amount (\$)	%	Supplemental Agreement Amount(\$)	%
1	\$24,253.93	4.12%	\$24,253.93	4.12%	\$24,216.15	4.11%
TOTAL	\$24,253.93	4.12%	\$24,253.93	4.12%	\$24,216.15	4.11%

Change Orders with Cumulative Total of \$75,000 or Less (Information Only)

December 07, 2020 Commission Meeting

Project Number:	SBR-257N(080)SB	CO APPROVAL:	Oct. 21, 2020	AGENDA ITEM	
		Contract ID:	200167		
Contractor :	LOGOS CONSTRUCTION CO., LLC	Job Piece No.:	32732(04)	155U	
		Highway No.:	US-60		
Designer:	FREESE & NICOLS, INC.	Div. / County.:	04 / OSAGE		
Description:	BRIDGE REHABILITATION US-60: OVER COUNTY ROAD AND ARKANSAS RIVER, 0.1 MILES AND 0.3 MILES EAST OF THE US-177 JUNCTION IN PONCA CITY. PROJECT LENGTH = 0.430 MILE				
Contract Amount:	\$1,230,198.84	Funds Available:	\$1,288,548.84	Funds Paid(%):	14%
Change Order	1	Original Time Used:	18%	Revised Time Used:	18%

Change Order No. 1 approves a supplemental agreement and an additional appropriation in the amount of \$58,350.00.

Engineering: This change provides payment for multiple traffic control pay items required to complete the project as specified due to these items being inadvertently omitted from the plans; and for the additional work required to construct pedestal extensions due to discovering during construction multiple broken bolts on various piers.

NEW ITEMS			\$58,350.00
Construction Miscellaneous (Pedestal Extensions)	25.00 EA	\$1,155.00 /EA	\$28,875.00
Construction Traff. Str. (Paint) (4" Wide)	20,200.00 LF	\$0.21 /LF	\$4,242.00
Pavement Marking Removal (Hydroblasting)	13,100.00 LF	\$1.11 /LF	\$14,541.00
Arrow Display (Type C)	360.00 SD	\$26.40 /SD	\$9,504.00
Construction Barricades (Type III)	2,160.00 SD	\$0.55 /SD	\$1,188.00

CHANGE ORDER ACTIONS						
CHANGE ORDER NO.	(+) Overrun (-) Underrun Amount (\$)	%	Appropriated Amount (\$)	%	Supplemental Agreement Amount(\$)	%
1	\$58,350.00	4.74%	\$58,350.00	4.74%	\$58,350.00	4.74%
TOTAL	\$58,350.00	4.74%	\$58,350.00	4.74%	\$58,350.00	4.74%

Change Orders with Cumulative Total of \$75,000 or Less (Information Only)

December 07, 2020 Commission Meeting

Project Number:	SBR-261B(090)SB	CO APPROVAL:	Oct. 29, 2020	AGENDA ITEM 155V
		Contract ID:	190369	
Contractor :	C3 CONSTRUCTION, INC.	Job Piece No.:	29738(04)	
		Highway No.:	SH-31 EB	
Designer:	OKLA. DEPT. OF TRANSPORTATION	Div. / County.:	02 / PITTSBURG	
Description:	BRIDGE REHABILITATION SH-31 EB: OVER US-270, 0.7 MILES EAST OF THE US-69 INTERCHANGE IN MCALESTER. PROJECT LENGTH = 0.159 MILE			
Contract Amount:	\$2,124,741.60	Funds Available:	\$2,135,838.30	Funds Paid(%) : 89%
Change Order	1	Original Time Used:	200%	Revised Time Used: 200%

Change Order No. 1 approves a supplemental agreement and an additional appropriation in the amount of \$9,703.42.

Site Requirement: This change provides payment for the reclassification of several pay items required to utilize trenching to install a 24-inch concrete pipe under US-270 in lieu of jacking as planned due to encountering rock. This change extends the contract time fourteen days to complete this additional work.

NEW ITEMS				<u>\$20,329.16</u>
24" Jacked Conduit (Reclassified)	73.00 LF	\$243.68 /LF		\$17,788.64
Sawing Pavement (Reclassified)	100.00 LF	\$5.66 /LF		\$566.00
Removal of Asphalt Pavement (Reclassified)	22.22 SY	\$54.00 /SY		\$1,199.88
Removal of Curb and Gutter (Reclassified)	8.00 LF	\$10.94 /LF		\$87.52
1'-8" Comb. Crb. & Gut.(6" Mntble-Notch) (Reclassified)	4.00 LF	\$137.90 /LF		\$551.60
Conc. curb (8" Barrier-Integral) (Reclassified)	4.00 LF	\$33.88 /LF		\$135.52
UNDERRUN ITEMS				<u>-\$10,625.74</u>
24" Jacked Conduit	-104.00 LF	\$67.08 /LF		-\$6,976.32
Sawing Pavement	-751.00 LF	\$3.38 /LF		-\$2,538.38
Removal of Curb and Gutter	-17.00 LF	\$3.72 /LF		-\$63.24
1'-8" Comb. Curb & Gutter (6" Mntble-Notched)	-31.00 LF	\$33.80 /LF		-\$1,047.80

CHANGE ORDER ACTIONS						
CHANGE ORDER NO.	(+) Overrun (-) Underrun Amount (\$)	%	Appropriated Amount (\$)	%	Supplemental Agreement Amount(\$)	%
1	\$9,703.42	0.46%	\$9,703.42	0.46%	\$9,703.42	0.46%
2	\$1,393.28	0.07%	\$1,393.28	0.07%	\$1,393.28	0.07%
TOTAL	\$11,096.70	0.52%	\$11,096.70	0.52%	\$11,096.70	0.52%

Change Orders with Cumulative Total of \$75,000 or Less (Information Only)

December 07, 2020 Commission Meeting

Project Number:	SBR-261B(090)SB	CO APPROVAL:	Oct. 29, 2020	AGENDA ITEM
		Contract ID:	190369	
Contractor :	C3 CONSTRUCTION, INC.	Job Piece No.:	29738(04)	155W
		Highway No.:	SH-31 EB	
Designer:	OKLA. DEPT. OF TRANSPORTATION	Div. / County.:	02 / PITTSBURG	
Description:	BRIDGE REHABILITATION SH-31 EB: OVER US-270, 0.7 MILES EAST OF THE US-69 INTERCHANGE IN MCALESTER. PROJECT LENGTH = 0.159 MILE			
Contract Amount:	\$2,124,741.60	Funds Available:	\$2,135,838.30	Funds Paid(%) : 89%
Change Order	2	Original Time Used:	200%	Revised Time Used: 200%

Change Order No. 2 approves a supplemental agreement and an additional appropriation in the amount of \$1,393.28.

Site Requirement: This change provides payment for the restocking fee incurred by the contractor due to returning thirty linear feet of 24-inch concrete pipe to the supplier due to an apparent overestimation of the contract amount.

NEW ITEM			\$1,393.28
Construction Miscellaneous (Restocking Fee)(Unused Pipe)	1.00 LSUM	\$1,393.28 /LSUM	\$1,393.28

CHANGE ORDER ACTIONS						
CHANGE ORDER NO.	(+) Overrun (-) Underrun Amount (\$)	%	Appropriated Amount (\$)	%	Supplemental Agreement Amount(\$)	%
1	\$9,703.42	0.46%	\$9,703.42	0.46%	\$9,703.42	0.46%
2	\$1,393.28	0.07%	\$1,393.28	0.07%	\$1,393.28	0.07%
TOTAL	\$11,096.70	0.52%	\$11,096.70	0.52%	\$11,096.70	0.52%

Change Orders with Cumulative Total of \$75,000 or Less (Information Only)

December 07, 2020 Commission Meeting

Project Number:	SSP-013N(176)PM		CO APPROVAL:	Nov. 09, 2020	AGENDA ITEM
			Contract ID:	190370	
Contractor :	DUIT CONSTRUCTION COMPANY, INC.		Job Piece No.:	34329(04)	155X
			Highway No.:	US-69	
Designer:	LOCHNER		Div. / County.:	02 / PITTSBURG	
Description:	PAVEMENT REHABILITATION US-69: FROM 0.5 MILES NORTH OF THE US-270 INTERCHANGE, EXTENDED NORTH IN MCALESTER. PROJECT LENGTH = 3.679 MILES				
Contract Amount:	\$6,365,930.45	Funds Available:	\$6,439,110.26	Funds Paid(%) :	99%
Change Order	2	Original Time Used:	82%	Revised Time Used:	82%

Change Order No. 2 approves a supplemental agreement and an additional appropriation in the amount of \$73,179.81.

Site Requirement: This change provides payment for the pavement smoothness incentive earned by the contractor for exceptionally smooth asphalt pavement as provided for in the contract; for the overrun of the concrete driveway pay item required to complete the project as specified due to an error calculating the quantity in the plans; for the removal of pavement markers pay item required to remove the existing raised pavement markers to make way for the planned inlaid traffic stripe due to this work being inadvertently omitted from the plans; and for the overrun of the cold milling pay item required to complete the project as specified due to the existing asphalt varying in width throughout the project and due to the area of existing guardrail widenings being inadvertently omitted from the plans.

NEW ITEMS				\$50,258.58
Pavement / Bridge Smoothness Adjustment	1.00	LSUM	\$42,877.08 /LSUM	\$42,877.08
Removal of Class C Pavement Markers	190.00	EA	\$38.85 /EA	\$7,381.50
OVERRUN ITEMS				\$22,921.23
Cold Milling Pavement	1,607.33	SY	\$4.30 /SY	\$6,911.52
8" Concrete Driveway	158.23	SY	\$101.18 /SY	\$16,009.71

CHANGE ORDER ACTIONS						
CHANGE ORDER NO.	(+) Overrun (-) Underrun Amount (\$)	%	Appropriated Amount (\$)	%	Supplemental Agreement Amount(\$)	%
1	-\$12,648.68	-0.20%	\$0.00	0.00%	\$0.00	0.00%
2	\$73,179.81	1.15%	\$73,179.81	1.15%	\$7,381.50	0.12%
3	\$235,627.04	3.70%	\$235,627.04	3.70%	\$22,856.00	0.36%
TOTAL	\$296,158.17	4.65%	\$308,806.85	4.85%	\$30,237.50	0.47%

Change Orders with Cumulative Total of \$75,000 or Less (Information Only)

December 07, 2020 Commission Meeting

Project Number:	STP-266B(072)IG	CO APPROVAL:	Oct. 14, 2020	AGENDA ITEM	
		Contract ID:	190328		
Contractor :	ELLSWORTH CONSTRUCTION, LLC	Job Piece No.:	33314(04)	155Y	
		Highway No.:	CITY STREET (PINE ST)		
Designer:	KELLOGG ENGINEERING, INC.	Div. / County.:	08 / ROGERS		
Description:	RESURFACE (ASPHALT) CITY STREET (PINE STREET): FROM THE SH-167 JUNCTION, EXTEND WEST IN CATOOSA. PROJECT LENGTH = 2.982 MILES				
Contract Amount:	\$809,001.10	Funds Available:	\$860,044.14	Funds Paid(%) :	96%
Change Order	3	Original Time Used:	153%	Revised Time Used:	121%

Change Order No. 3 approves a supplemental agreement and an additional appropriation in the amount of \$4,769.44.

Site Requirement: This change provides payment for the additional work required to mill and overlay an additional eighty-four feet of roadway within the incidental area on the east end of the project due to discovering during the final inspection that the existing pavement had become deteriorated and is in need of immediate attention. This change extends the contract time thirteen days due to more patching being required on the project than planned.

NEW ITEM			\$4,769.44
Mobilization (Additional)(Repair Roadway)	1.00 LSUM	\$4,769.44 /LSUM	\$4,769.44

CHANGE ORDER ACTIONS						
CHANGE ORDER NO.	(+) Overrun (-) Underrun Amount (\$)	%	Appropriated Amount (\$)	%	Supplemental Agreement Amount(\$)	%
1	\$0.00	0.00%	\$0.00	0.00%	\$0.00	0.00%
2	\$46,273.60	5.72%	\$46,273.60	5.72%	\$7,981.60	0.99%
3	\$4,769.44	0.59%	\$4,769.44	0.59%	\$4,769.44	0.59%
TOTAL	\$51,043.04	6.31%	\$51,043.04	6.31%	\$12,751.04	1.58%

Change Orders with Cumulative Total of \$75,000 or Less (Information Only)

December 07, 2020 Commission Meeting

Project Number:	STP-268C(056)CI		CO APPROVAL:	Nov. 10, 2020	AGENDA ITEM 155Z
			Contract ID:	190257	
Contractor :	JOB CONSTRUCTION CO., INC.		Job Piece No.:	32396(04)	
			Highway No.:	MULTIPLE LOCATIONS	
Designer:	GUY ENGINEERING SERVICES, INC.		Div. / County.:	01 / SEQUOYAH	
Description:	GRADE, DRAIN, SURFACE, AND BRIDGE COUNTY ROAD (DWIGHT MISSION/SEQUOYAH LANDING ROAD): FROM I-40, EXTEND NORTH NEAR SALLISAW. PROJECT LENGTH = 5.555 MILES				
Contract Amount:	\$8,848,045.86	Funds Available:	\$8,857,705.86	Funds Paid(%) :	36%
Change Order	1	Original Time Used:	35%	Revised Time Used:	35%

Change Order No. 1 approves a supplemental agreement and an additional appropriation in the amount of \$9,660.00.

Site Requirement: This change provides payment for the utilization of 54-inch reinforced concrete pipe in lieu of the 54-inch corrugated polypropylene pipe as planned due to that size of pipe being unavailable from the manufacturer. This change extends the contract time twenty-nine days due to the contractor not being unable to begin work until all utilities had been relocated.

NEW ITEM			\$19,180.00
54" R. C. Pipe Class III	70.00 LF	\$274.00 /LF	\$19,180.00
UNDERRUN ITEM			-\$9,520.00
54" Corrugated Polypropylene Pipe	-68.00 LF	\$140.00 /LF	-\$9,520.00

CHANGE ORDER ACTIONS						
CHANGE ORDER NO.	(+) Overrun (-) Underrun Amount (\$)	%	Appropriated Amount (\$)	%	Supplemental Agreement Amount(\$)	%
1	\$9,660.00	0.11%	\$9,660.00	0.11%	\$9,660.00	0.11%
TOTAL	\$9,660.00	0.11%	\$9,660.00	0.11%	\$9,660.00	0.11%

Change Orders with Cumulative Total of \$75,000 or Less (Information Only)

December 07, 2020 Commission Meeting

Project Number:	STP-270C(039)CI	CO APPROVAL:	Nov. 05, 2020	AGENDA ITEM	
		Contract ID:	200213		
Contractor :	KLAVER CONSTRUCTION COMPANY, INC.	Job Piece No.:	28649(04)	155AA	
		Highway No.:	COUNTY ROAD (NS-77)		
Designer:	CED #8	Div. / County.:	06 / TEXAS		
Description:	BRIDGE AND APPROACHES COUNTY ROAD (NS-77); OVER UNNAMED CREEK, 2.9 MILES SOUTH OF THE US-64 JUNCTION NEAR GUYMON. PROJECT LENGTH = 0.179 MILE				
Contract Amount:	\$699,902.62	Funds Available:	\$699,902.62	Funds Paid(%):	47%
Change Order	1	Original Time Used:	42%	Revised Time Used:	42%

Change Order No. 1 approves a supplemental agreement resulting in an underrun to the contract in the amount of \$7,920.00.

Scope: This change reclassifies the unit price for the caliche base pay item required to construct the detour surface due to reducing the gradation specifications to allow a local source of material to be utilized.

NEW ITEM			\$32,340.00
Caliche Base (Reclassified)	660.00 CY	\$49.00 /CY	\$32,340.00
UNDERRUN ITEM			-\$40,260.00
Caliche Base	-660.00 CY	\$61.00 /CY	-\$40,260.00

CHANGE ORDER ACTIONS						
CHANGE ORDER NO.	(+) Overrun (-) Underrun Amount (\$)	%	Appropriated Amount (\$)	%	Supplemental Agreement Amount(\$)	%
1	-\$7,920.00	-1.13%	\$0.00	0.00%	\$0.00	0.00%
TOTAL	-\$7,920.00	-1.13%	\$0.00	0.00%	\$0.00	0.00%

Change Orders with Cumulative Total of \$75,000 or Less (Information Only)

December 07, 2020 Commission Meeting

Project Number:	ACNHPPI-2440-(017)FP	CO APPROVAL:	Nov. 03, 2020	AGENDA ITEM	
		Contract ID:	180148		
Contractor :	SHERWOOD CONSTRUCTION CO., INC.	Job Piece No.:	28859(04)	155BB	
		Highway No.:	CITY STREET		
Designer:	CRAIG & KEITHLINE, INC.	Div. / County.:	08 / TULSA		
Description:	BRIDGE AND APPROACHES CITY STREET (129TH E AVENUE): OVER I-244, 0.5 MILES NORTH OF I-44 IN TULSA. PROJECT LENGTH = 0.282 MILE				
Contract Amount:	\$5,224,452.68	Funds Available:	\$5,230,568.68	Funds Paid(%) :	98%
Change Order	4	Original Time Used:	123%	Revised Time Used:	100%

Change Order No. 4 approves a supplemental agreement and an additional appropriation in the amount of \$6,116.00.

Site Requirement: This change provides payment for the additional work required to relocate the wiring for the highway lighting due to the existing wiring being in conflict with the new drilled shafts.

NEW ITEMS			\$6,116.00
2" PVC Sch.40 Plastic Conduit Trenched	400.00 LF	\$8.36 /LF	\$3,344.00
1/C No.4 Elect. Cond.	1,260.00 LF	\$2.20 /LF	\$2,772.00

CHANGE ORDER ACTIONS						
CHANGE ORDER NO.	(+) Overrun (-) Underrun Amount (\$)	%	Appropriated Amount (\$)	%	Supplemental Agreement Amount(\$)	%
1	\$0.00	0.00%	\$0.00	0.00%	\$0.00	0.00%
2	\$0.00	0.00%	\$0.00	0.00%	\$0.00	0.00%
4	\$6,116.00	0.12%	\$6,116.00	0.12%	\$6,116.00	0.12%
TOTAL	\$6,116.00	0.12%	\$6,116.00	0.12%	\$6,116.00	0.12%

Change Orders with Cumulative Total of \$75,000 or Less (Information Only)

December 07, 2020 Commission Meeting

Project Number:	STP-272B(266)PM		CO APPROVAL:	Oct. 21, 2020	AGENDA ITEM 155CC
			Contract ID:	190335	
Contractor :	TRI-STAR CONSTRUCTION, LLC		Job Piece No.:	31885(04)	
			Highway No.:	SH-11	
Designer:	OKLA. DEPT. OF TRANSPORTATION		Div. / County.:	08 / TULSA	
Description:	BRIDGE AND APPROACHES SH-11: OVER DIRTY BUTTER CREEK, 1.2 MILES WEST OF THE US-75 JUNCTION IN TULSA. PROJECT LENGTH = 0.075 MILE				
Contract Amount:	\$1,753,055.53	Funds Available:	\$1,806,305.53	Funds Paid(%) :	96%
Change Order	3	Original Time Used:	63%	Revised Time Used:	63%

Change Order No. 3 approves an additional appropriation in the amount of \$51,000.00.

Site Requirement: This change provides payment for the early completion incentive earned by the contractor for achieving substantial completion on this project prior to the time allowed in the contract. This change alters the method of measurement for the structural excavation unclassified pay item from plan quantity to measured.

NEW ITEM	\$51,000.00
Incentive for Early Completion (Milestone No. 1)	17.00 DAY \$3,000.00 /DAY \$51,000.00

CHANGE ORDER ACTIONS						
CHANGE ORDER NO.	(+) Overrun (-) Underrun Amount (\$)	%	Appropriated Amount (\$)	%	Supplemental Agreement Amount(\$)	%
1	\$0.00	0.00%	\$0.00	0.00%	\$0.00	0.00%
2	\$2,250.00	0.13%	\$2,250.00	0.13%	\$2,250.00	0.13%
3	\$51,000.00	2.91%	\$51,000.00	2.91%	\$0.00	0.00%
TOTAL	\$53,250.00	3.04%	\$53,250.00	3.04%	\$2,250.00	0.13%

Change Orders with Cumulative Total Greater than \$75,000

DECEMBER 07, 2020 Commission Meeting

ITEM	COUNTY	PROJECT NUMBER	FED OVER	CONTRACT	JPN	CHANGE ORDER	UNDER/ OVER RUN
156A	ADAIR	NHPP-101A(052)	<input type="checkbox"/>	180341	1692817	004	\$0.02
156B	ATOKA	CIRB-203C(068)RB	<input type="checkbox"/>	190002	3119204	004	\$46,268.36
156C	BECKHAM	STP-205B(076)PM / ACNHPPPI-4000(061)PM	<input type="checkbox"/>	190100	3099804	007	\$998.25
156D	BECKHAM	STP-205B(076)PM / ACNHPPPI-4000(061)PM	<input type="checkbox"/>	190100	3099804	008	\$12,681.41
156E	BECKHAM	STP-205B(076)PM / ACNHPPPI-4000(061)PM	<input type="checkbox"/>	190100	3099804	010	\$84,931.25
156F	BECKHAM	STP-205B(076)PM / ACNHPPPI-4000(061)PM	<input type="checkbox"/>	190100	3099804	011	\$36,800.00
156G	BECKHAM	STP-205B(076)PM / ACNHPPPI-4000(061)PM	<input type="checkbox"/>	190100	3099804	012	\$70,027.08
156H	BLAINE	NHPP-017N(254)PM	<input type="checkbox"/>	190238	2791310	003	\$95,842.71
156I	CANADIAN	IMY-0040-4(436) / IMY-0040-4(435)138 / SBR-109N(182)SB	<input type="checkbox"/>	130003	2442407	017	\$233,267.60
156J	GARVIN	CIRB-225C(073)RB / CIRB-225C(074)RB	<input type="checkbox"/>	180354	2784804	004	\$37,497.42
156K	KAY	STP-136B(145)SS	<input type="checkbox"/>	190356	2438004	002	\$105,656.00
156L	LOGAN	ACERSTP-242C(056)ER	<input type="checkbox"/>	160439	3237904	005	\$1,551.53
156M	MAJOR	SBR-247C(025)SB	<input type="checkbox"/>	190384	2947704	003	\$147,502.04
156N	MAJOR	SBR-247C(025)SB	<input type="checkbox"/>	190384	2947704	004	\$21,031.93
156O	MAYES	SSP-249C(049)SS / SSP-249C(052)SS	<input type="checkbox"/>	200232	3188405	002	\$145,005.00
156P	OKLAHOMA	NHPPI-2350-(009)PM	<input type="checkbox"/>	180359	0903327	012	\$8,885.23
156Q	OKLAHOMA	TAP-255D(328)AG	<input type="checkbox"/>	170327	3143504	006	\$13,310.31
156R	OKLAHOMA	TAP-255C(490)TP / NHPP-255N(489)EH	<input type="checkbox"/>	190323	3298404	003	\$62,796.80
156S	OKLAHOMA	STP-255F(501)3B	<input type="checkbox"/>	190295	3418004	007	\$2,452.87
156T	OSAGE	STP-157C(167)CI	<input type="checkbox"/>	180107	2552804	002	\$54,590.96
156U	PITTSBURG	SSP-013N(176)PM	<input type="checkbox"/>	190370	3432904	003	\$235,627.04
156V	POTTAWATOMIE	SSP-263B(062)PM	<input type="checkbox"/>	180301	2956904	004	\$9,802.49
156W	POTTAWATOMIE	NHPPI-4000(096)3P / NHPPI-4000(097)3P	<input type="checkbox"/>	200121	3333604	002	\$17,308.40
156X	SEQUOYAH	NHPPI-4000-(248)FP / NHPPI-4000- (064)PM	<input type="checkbox"/>	180251	1061807	003	\$391,472.23
156Y	TULSA	NHPP-272N(205)PM / SSP-272N(206)PM	<input type="checkbox"/>	180307	1147704	003	\$207,755.86
156Z	TULSA	ACNHPPPI-4400-(438)SS	<input type="checkbox"/>	160333	2189904	014	\$41,587.68
156AA	TULSA	NHPPIY-0244-2(501) / NHPPIY-0244-2(504) / NHPPIY-0244-2(507)	<input type="checkbox"/>	140304	2630006	004	\$50,600.99
156BB	TULSA	STP-272B(278)CI	<input type="checkbox"/>	200085	3070304	004	\$108,163.33

\$2,243,414.79

Change Orders with Cumulative Total Greater than \$75,000

December 07, 2020 Commission Meeting

Project Number:	NHPP-101A(052)	Contract ID:	180341	AGENDA ITEM
Contractor :	EMERY SAPP & SONS, INC.	Job Piece No.:	16928(17)	156A
Designer:	OKLA. DEPT. OF TRANSPORTATION	Highway No.:	US-59	
Description:	GRADE, DRAIN, SURFACE, AND BRIDGE US-59: FROM 6.4 MILES NORTH OF THE US-62 JUNCTION, EXTEND NORTH NEAR WATTS. PROJECT LENGTH = 3.344 MILES			
Contract Amount:	\$25,980,193.74	Funds Available:	\$26,476,813.35	Funds Paid(%): 95%
Change Order	4	Original Time Used:	102%	Revised Time Used: 98%

Request approval of Change Order No. 4 for a supplemental agreement and an additional appropriation in the amount of \$0.02.

Engineering: This change provides payment for the permanent barricade unit pay item required to install Type III barricades on local streets that are now dead ends as a result of this project due to this work being inadvertently omitted from the plans. This change documents the underrun of the riprap pay item due to the contract amount not being required to provide permanent erosion control.

NEW ITEM		\$4,619.90
Permanent Barricade Unit	2.00 EA	\$2,309.95 /EA
		\$4,619.90
UNDERRUN ITEM		-\$4,619.88
Type I-A Plain Riprap	-256.66 TON	\$18.00 /TON
		-\$4,619.88

CHANGE ORDER ACTIONS						
CHANGE ORDER NO.	(+) Overrun (-) Underrun Amount (\$)	%	Appropriated Amount (\$)	%	Supplemental Agreement Amount(\$)	%
1	\$8,610.76	0.03%	\$8,610.76	0.03%	\$8,610.76	0.03%
2	\$365,566.32	1.41%	\$365,566.32	1.41%	\$220,074.00	0.85%
3	-\$8.05	0.00%	\$0.00	0.00%	\$0.00	0.00%
4	\$0.02	0.00%	\$0.02	0.00%	\$0.02	0.00%
5	\$122,442.53	0.47%	\$122,442.53	0.47%	\$0.00	0.00%
TOTAL	\$496,611.58	1.91%	\$496,619.63	1.91%	\$228,684.78	0.88%

Change Orders with Cumulative Total Greater than \$75,000

December 07, 2020 Commission Meeting

Project Number:	CIRB-203C(068)RB		Contract ID:	190002	AGENDA ITEM 156B
Contractor :	THE CUMMINS CONSTRUCTION CO., INC.		Job Piece No.:	31192(04)	
Designer:	CED #3	Highway No.:	COUNTY ROAD (BOGGY D		
Description:	RESURFACE (ASPHALT) COUNTY ROAD (BOGGY DEPOT ROAD): FROM 8.0 MILES WEST OF THE US-69 JUNCTION, EXTEND EAST NEAR TUSHKA. PROJECT LENGTH = 7.138 MILES				
Contract Amount:	\$1,624,247.05	Funds Available:	\$1,833,137.05	Funds Paid(%) :	99%
Change Order	4	Original Time Used:	86%	Revised Time Used:	86%

Request approval of Change Order No. 4 for a supplemental agreement and an additional appropriation in the amount of \$46,268.36.

Site Requirement: This change provides payment for the overrun of the traffic bound surface course pay item required to complete the additional backfill work outlined on Change Order No. 3 due to underestimating the additional amount required; and for the concrete pipe and mobilization pay items required to extend multiple structures due to the work on this project creating steep foreslopes over the existing crossdrains.

NEW ITEMS				\$21,680.00
36" R. C. Pipe Class III	72.00 LF	\$190.00 /LF		\$13,680.00
Mobilization (Remobilization)	1.00 LSUM	\$8,000.00 /LSUM		\$8,000.00
OVERRUN ITEM				\$24,588.36
Traffic Bound Surface Course Type E	1,138.35 TON	\$21.60 /TON		\$24,588.36

CHANGE ORDER ACTIONS						
CHANGE ORDER NO.	(+) Overrun (-) Underrun Amount (\$)	%	Appropriated Amount (\$)	%	Supplemental Agreement Amount(\$)	%
1	\$148,410.00	9.14%	\$148,410.00	9.14%	\$0.00	0.00%
2	\$0.00	0.00%	\$0.00	0.00%	\$0.00	0.00%
3	\$60,480.00	3.72%	\$60,480.00	3.72%	\$0.00	0.00%
4	\$46,268.36	2.85%	\$46,268.36	2.85%	\$21,680.00	1.33%
TOTAL	\$255,158.36	15.71%	\$255,158.36	15.71%	\$21,680.00	1.33%

Change Orders with Cumulative Total Greater than \$75,000

December 07, 2020 Commission Meeting

Project Number:	STP-205B(076)PM / ACNHPPPI-4000(061)PM	Contract ID:	190100	AGENDA ITEM
Contractor :	FRONTIER BRIDGE, INC.	Job Piece No.:	30998(04)	156C
Designer:	OKLA. DEPT. OF TRANSPORTATION	Highway No.:	SH-6	
Description:	GRADE, DRAIN, SURFACE, BRIDGE, AND APPROACHES I-40B/SH-6: I-40B, FROM 1.1 MI N OF I-40, EXT N. NEAR SAYRE. SH-6, OVER I-40, 1.6 MILES SOUTH OF I-40B IN ELK CITY. PROJECT LENGTH = 1.141 MILES			
Contract Amount:	\$28,621,809.91	Funds Available:	\$29,243,490.16	Funds Paid(%) : 90%
Change Order	7	Original Time Used:	51%	Revised Time Used: 50%

Request approval of Change Order No. 7 for a supplemental agreement and an additional appropriation in the amount of \$998.25.

Site Requirement: This change provides payment for the cored holes pay item required to core through the existing decorative concrete island on Ramp D to relocate a sign footing due to line of sight conflicts with another sign.

NEW ITEM \$998.25
 Cored Holes 1.00 EA \$998.25 /EA \$998.25

CHANGE ORDER ACTIONS						
CHANGE ORDER NO.	(+ Overrun - Underrun Amount (\$))	%	Appropriated Amount (\$)	%	Supplemental Agreement Amount(\$)	%
1	\$0.00	0.00%	\$0.00	0.00%	\$0.00	0.00%
2	\$45,282.00	0.16%	\$45,282.00	0.16%	\$40,132.00	0.14%
3	\$0.00	0.00%	\$0.00	0.00%	\$0.00	0.00%
4	\$100,553.92	0.35%	\$100,553.92	0.35%	\$100,553.92	0.35%
5	\$106,720.00	0.37%	\$106,720.00	0.37%	\$0.00	0.00%
6	\$369,124.33	1.29%	\$369,124.33	1.29%	\$369,124.33	1.29%
7	\$998.25	0.00%	\$998.25	0.00%	\$998.25	0.00%
8	\$12,681.41	0.04%	\$12,681.41	0.04%	\$12,681.41	0.04%
10	\$84,931.25	0.30%	\$84,931.25	0.30%	\$0.00	0.00%
11	\$36,800.00	0.13%	\$36,800.00	0.13%	\$0.00	0.00%
12	\$70,027.08	0.24%	\$70,027.08	0.24%	\$0.00	0.00%
TOTAL	\$827,118.24	2.89%	\$827,118.24	2.89%	\$523,489.91	1.83%

Change Orders with Cumulative Total Greater than \$75,000

December 07, 2020 Commission Meeting

Project Number:	STP-205B(076)PM / ACNHPPPI-4000(061)PM		Contract ID:	190100		AGENDA ITEM
Contractor :	FRONTIER BRIDGE, INC.		Job Piece No.:	30998(04)		156D
Designer:	OKLA. DEPT. OF TRANSPORTATION		Highway No.:	SH-6		
Description:	GRADE, DRAIN, SURFACE, BRIDGE, AND APPROACHES I-40B/SH-6: I-40B, FROM 1.1 MI N OF I-40, EXT N. NEAR SAYRE. SH-6, OVER I-40, 1.6 MILES SOUTH OF I-40B IN ELK CITY. PROJECT LENGTH = 1.141 MILES					
Contract Amount:	\$28,621,809.91	Funds Available:	\$29,243,490.16	Funds Paid(%) :	90%	
Change Order	8	Original Time Used:	51%	Revised Time Used:	50%	

Request approval of Change Order No. 8 for a supplemental agreement and an additional appropriation in the amount of \$12,681.41.

Site Requirement: This change provides payment for the special concrete finish pay item required to apply a clear coat to the stamped concrete sections to prevent weathering and to achieve the desired finish.

NEW ITEM			\$12,681.41
Special Concrete Finish	2,329.00 SY	\$5.45 /SY	\$12,681.41

CHANGE ORDER ACTIONS						
CHANGE ORDER NO.	(+) Overrun (-) Underrun Amount (\$)	%	Appropriated Amount (\$)	%	Supplemental Agreement Amount(\$)	%
1	\$0.00	0.00%	\$0.00	0.00%	\$0.00	0.00%
2	\$45,282.00	0.16%	\$45,282.00	0.16%	\$40,132.00	0.14%
3	\$0.00	0.00%	\$0.00	0.00%	\$0.00	0.00%
4	\$100,553.92	0.35%	\$100,553.92	0.35%	\$100,553.92	0.35%
5	\$106,720.00	0.37%	\$106,720.00	0.37%	\$0.00	0.00%
6	\$369,124.33	1.29%	\$369,124.33	1.29%	\$369,124.33	1.29%
7	\$998.25	0.00%	\$998.25	0.00%	\$998.25	0.00%
8	\$12,681.41	0.04%	\$12,681.41	0.04%	\$12,681.41	0.04%
10	\$84,931.25	0.30%	\$84,931.25	0.30%	\$0.00	0.00%
11	\$36,800.00	0.13%	\$36,800.00	0.13%	\$0.00	0.00%
12	\$70,027.08	0.24%	\$70,027.08	0.24%	\$0.00	0.00%
TOTAL	\$827,118.24	2.89%	\$827,118.24	2.89%	\$523,489.91	1.83%

Change Orders with Cumulative Total Greater than \$75,000

December 07, 2020 Commission Meeting

Project Number:	STP-205B(076)PM / ACNHPPPI-4000(061)PM		Contract ID:	190100	AGENDA ITEM 156E
Contractor :	FRONTIER BRIDGE, INC.		Job Piece No.:	30998(04)	
Designer:	OKLA. DEPT. OF TRANSPORTATION		Highway No.:	SH-6	
Description:	OKLA. DEPT. OF TRANSPORTATION GRADE, DRAIN, SURFACE, BRIDGE, AND APPROACHES I-40B/SH-6: I-40B, FROM 1.1 MI N OF I-40, EXT N. NEAR SAYRE. SH-6, OVER I-40, 1.6 MILES SOUTH OF I-40B IN ELK CITY. PROJECT LENGTH = 1.141 MILES				
Contract Amount:	\$28,621,809.91	Funds Available:	\$29,243,490.16	Funds Paid(%) :	92%
Change Order	10	Original Time Used:	54%	Revised Time Used:	54%

Request approval of Change Order No. 10 for an additional appropriation in the amount of \$84,931.25.

Engineering: This change provides payment for the overrun of the drilled shafts pay item required to complete the project as specified due to an error in the calculations of the quantity of this item.

OVERRUN ITEM \$84,931.25
 Drilled Shafts 60" Diameter 63.50 LF \$1,337.50 /LF \$84,931.25

CHANGE ORDER ACTIONS						
CHANGE ORDER NO.	(+) Overrun (-) Underrun Amount (\$)	%	Appropriated Amount (\$)	%	Supplemental Agreement Amount(\$)	%
1	\$0.00	0.00%	\$0.00	0.00%	\$0.00	0.00%
2	\$45,282.00	0.16%	\$45,282.00	0.16%	\$40,132.00	0.14%
3	\$0.00	0.00%	\$0.00	0.00%	\$0.00	0.00%
4	\$100,553.92	0.35%	\$100,553.92	0.35%	\$100,553.92	0.35%
5	\$106,720.00	0.37%	\$106,720.00	0.37%	\$0.00	0.00%
6	\$369,124.33	1.29%	\$369,124.33	1.29%	\$369,124.33	1.29%
7	\$998.25	0.00%	\$998.25	0.00%	\$998.25	0.00%
8	\$12,681.41	0.04%	\$12,681.41	0.04%	\$12,681.41	0.04%
10	\$84,931.25	0.30%	\$84,931.25	0.30%	\$0.00	0.00%
11	\$36,800.00	0.13%	\$36,800.00	0.13%	\$0.00	0.00%
12	\$70,027.08	0.24%	\$70,027.08	0.24%	\$0.00	0.00%
TOTAL	\$827,118.24	2.89%	\$827,118.24	2.89%	\$523,489.91	1.83%

Change Orders with Cumulative Total Greater than \$75,000

December 07, 2020 Commission Meeting¹

Project Number:	STP-205B(076)PM / ACNHPPPI-4000(061)PM	Contract ID:	190100	AGENDA ITEM
Contractor :	FRONTIER BRIDGE, INC.	Job Piece No.:	30998(04)	156F
Designer:	OKLA. DEPT. OF TRANSPORTATION	Highway No.:	SH-6	
Description:	OKLA. DEPT. OF TRANSPORTATION GRADE, DRAIN, SURFACE, BRIDGE, AND APPROACHES I-40B/SH-6: I-40B, FROM 1.1 MI N OF I-40, EXT N. NEAR SAYRE. SH-6, OVER I-40, 1.6 MILES SOUTH OF I-40B IN ELK CITY. PROJECT LENGTH = 1.141 MILES			
Contract Amount:	\$28,621,809.91	Funds Available:	\$29,243,490.16	Funds Paid(%) : 92%
Change Order	11	Original Time Used:	54%	Revised Time Used: 54%

Request approval of Change Order No. 11 for an additional appropriation in the amount of \$36,800.00.

Site Requirement: This change provides payment for the overrun of the solid slab sodding pay item required to ensure adequate permanent erosion control on all disturbed areas of the project due to additional disturbances being anticipated.

OVERRUN ITEM	\$36,800.00
Solid Slab Sodding (Estimated)	20,000.00 SY \$1.84 /SY \$36,800.00

CHANGE ORDER ACTIONS						
CHANGE ORDER NO.	(+) Overrun (-) Underrun Amount (\$)	%	Appropriated Amount (\$)	%	Supplemental Agreement Amount(\$)	%
1	\$0.00	0.00%	\$0.00	0.00%	\$0.00	0.00%
2	\$45,282.00	0.16%	\$45,282.00	0.16%	\$40,132.00	0.14%
3	\$0.00	0.00%	\$0.00	0.00%	\$0.00	0.00%
4	\$100,553.92	0.35%	\$100,553.92	0.35%	\$100,553.92	0.35%
5	\$106,720.00	0.37%	\$106,720.00	0.37%	\$0.00	0.00%
6	\$369,124.33	1.29%	\$369,124.33	1.29%	\$369,124.33	1.29%
7	\$998.25	0.00%	\$998.25	0.00%	\$998.25	0.00%
8	\$12,681.41	0.04%	\$12,681.41	0.04%	\$12,681.41	0.04%
10	\$84,931.25	0.30%	\$84,931.25	0.30%	\$0.00	0.00%
11	\$36,800.00	0.13%	\$36,800.00	0.13%	\$0.00	0.00%
12	\$70,027.08	0.24%	\$70,027.08	0.24%	\$0.00	0.00%
TOTAL	\$827,118.24	2.89%	\$827,118.24	2.89%	\$523,489.91	1.83%

Change Orders with Cumulative Total Greater than \$75,000

December 07, 2020 Commission Meeting

Project Number:	STP-205B(076)PM / ACNHPPPI-4000(061)PM	Contract ID:	190100	AGENDA ITEM
Contractor :	FRONTIER BRIDGE, INC.	Job Piece No.:	30998(04)	156G
		Highway No.:	SH-6	
Designer:	OKLA. DEPT. OF TRANSPORTATION	Div. / County.:	05 / BECKHAM	
Description:	GRADE, DRAIN, SURFACE, BRIDGE, AND APPROACHES I-40B/SH-6: I-40B, FROM 1.1 MI N OF I-40, EXT N. NEAR SAYRE. SH-6, OVER I-40, 1.6 MILES SOUTH OF I-40B IN ELK CITY. PROJECT LENGTH = 1.141 MILES			
Contract Amount:	\$28,621,809.91	Funds Available:	\$29,243,490.16	Funds Paid(%) : 92%
Change Order	12	Original Time Used:	54%	Revised Time Used: 54%

Request approval of Change Order No. 12 for an additional appropriation in the amount of \$70,027.08.

Site Requirement: This change provides payment for the overrun of the stabilized subgrade pay item required to construct temporary ramps at Ramps A, B, and C due to determining it would be better to keep the ramps open during construction in lieu of closing them as planned after the problems encountered by closing Ramp D.

OVERRUN ITEM		\$70,027.08
Stabilized Subgrade	8,238.48 SY	\$8.50 /SY
		\$70,027.08

CHANGE ORDER ACTIONS						
CHANGE ORDER NO.	(+/-) Overrun (-) Underrun Amount (\$)	%	Appropriated Amount (\$)	%	Supplemental Agreement Amount(\$)	%
1	\$0.00	0.00%	\$0.00	0.00%	\$0.00	0.00%
2	\$45,282.00	0.16%	\$45,282.00	0.16%	\$40,132.00	0.14%
3	\$0.00	0.00%	\$0.00	0.00%	\$0.00	0.00%
4	\$100,553.92	0.35%	\$100,553.92	0.35%	\$100,553.92	0.35%
5	\$106,720.00	0.37%	\$106,720.00	0.37%	\$0.00	0.00%
6	\$369,124.33	1.29%	\$369,124.33	1.29%	\$369,124.33	1.29%
7	\$998.25	0.00%	\$998.25	0.00%	\$998.25	0.00%
8	\$12,681.41	0.04%	\$12,681.41	0.04%	\$12,681.41	0.04%
10	\$84,931.25	0.30%	\$84,931.25	0.30%	\$0.00	0.00%
11	\$36,800.00	0.13%	\$36,800.00	0.13%	\$0.00	0.00%
12	\$70,027.08	0.24%	\$70,027.08	0.24%	\$0.00	0.00%
TOTAL	\$827,118.24	2.89%	\$827,118.24	2.89%	\$523,489.91	1.83%

Change Orders with Cumulative Total Greater than \$75,000

December 07, 2020 Commission Meeting

Project Number:	NHPP-017N(254)PM		Contract ID:	190238	AGENDA ITEM 156H
Contractor :	THE CUMMINS CONSTRUCTION CO., INC.		Job Piece No.:	27913(10)	
Designer:	TETRA TECH		Highway No.:	SH-3	
Description:	GRADE, DRAIN, AND SURFACE SH-3: FROM 1.0 MILE EAST OF THE US-270 JUNCTION, EXTEND EAST IN WATONGA. PROJECT LENGTH = 4.109 MILES				
Contract Amount:	\$9,866,475.86	Funds Available:	\$10,100,975.86	Funds Paid(%) :	43%
Change Order	3	Original Time Used:	48%	Revised Time Used:	48%

Request approval of Change Order No. 3 for a supplemental agreement and an additional appropriation in the amount of \$95,842.71.

Site Requirement: This change provides payment for the removal of concrete pavement pay item required to remove the existing pavement due to discovering during construction that some of the existing pavement was concrete with an asphalt overlay instead of full depth asphalt as expected; and for the perforated pipe underdrain pay item required to maintain a dry subgrade due to discovering a natural spring during construction near Structure No. 60.

NEW ITEMS	\$95,842.71		
6" Perforated Pipe Underdrain Round	1,455.00 LF	\$26.25 /LF	\$38,193.75
Removal of Concrete Pavement	6,782.23 SY	\$8.50 /SY	\$57,648.96

CHANGE ORDER ACTIONS						
CHANGE ORDER NO.	(+) Overrun (-) Underrun Amount (\$)	%	Appropriated Amount (\$)	%	Supplemental Agreement Amount(\$)	%
1	\$0.00	0.00%	\$0.00	0.00%	\$0.00	0.00%
2	\$234,500.00	2.38%	\$234,500.00	2.38%	\$0.00	0.00%
3	\$95,842.71	0.97%	\$95,842.71	0.97%	\$95,842.71	0.97%
TOTAL	\$330,342.71	3.35%	\$330,342.71	3.35%	\$95,842.71	0.97%

Change Orders with Cumulative Total Greater than \$75,000

December 07, 2020 Commission Meeting

Project Number:	IMY-0040-4(436) / IMY-0040-4(435)138 / SBR-109N(182)SB	Contract ID:	130003	AGENDA ITEM
Contractor :	DUIT CONSTRUCTION COMPANY, INC./TTK CONSTRUCTION CO., INC JV	Job Piece No.:	24424(07)	156I
Designer:	POE & ASSOCIATES, INC.	Highway No.:	I-40 / SH-4	
Description:	RECONSTRUCT - ADDED LANES, BRIDGE AND APPROACHES I-40: FROM MILE MARKER 136, EXTEND EAST TO MILE MARKER 140. SH-4 (MUSTANG ROAD): OVER I-40. PROJECT LENGTH = 4.664 MILES.			
Contract Amount:	\$48,167,910.63	Funds Available:	\$52,681,159.76	Funds Paid(%) : 100%
Change Order	17	Original Time Used:	87%	Revised Time Used: 70%

Request approval of Change Order No. 17 for a supplemental agreement and an additional appropriation in the amount of \$233,267.60.

Site Requirement: This change provides payment for the final estimate due to the overrun of the traffic bound surface course, aggregate base, and cement treated base pay items. Additional quantities of these items were required to complete this project as specified due to an apparent underestimation of the contract amount.

The cost of this change is partially offset by the underrun of other items of work.

OVERRUN ITEMS			\$271,272.26
Cement Treated Base	5,058.22 SY	\$11.00 /SY	\$55,640.42
Aggregate Base Type A	1,278.11 CY	\$44.00 /CY	\$56,236.84
Traffic Bound Surface Course Type E	7,969.75 TON	\$20.00 /TON	\$159,395.00

CHANGE ORDER ACTIONS						
CHANGE ORDER NO.	(+/-) Overrun Amount (\$)	%	Appropriated Amount (\$)	%	Supplemental Agreement Amount(\$)	%
1	\$13,095.92	0.03%	\$13,095.92	0.03%	\$13,095.92	0.03%
2	\$1,066,400.75	2.21%	\$1,066,400.75	2.21%	\$0.00	0.00%
3	\$72,104.00	0.15%	\$72,104.00	0.15%	\$0.00	0.00%
4	-\$7,754.67	-0.02%	\$0.00	0.00%	\$0.00	0.00%
5	\$85,815.55	0.18%	\$85,815.55	0.18%	\$85,815.55	0.18%
6	\$140,000.00	0.29%	\$140,000.00	0.29%	\$0.00	0.00%
7	\$0.00	0.00%	\$0.00	0.00%	\$0.00	0.00%
8	\$506,708.45	1.05%	\$506,708.45	1.05%	\$506,708.45	1.05%
9	\$2,284.92	0.00%	\$2,284.92	0.00%	\$2,284.92	0.00%
10	\$830,006.46	1.72%	\$830,006.46	1.72%	\$830,006.46	1.72%
11	\$913,704.06	1.90%	\$913,704.06	1.90%	\$0.00	0.00%
12	\$44,055.02	0.09%	\$44,055.02	0.09%	\$44,055.02	0.09%
13	\$188,954.64	0.39%	\$188,954.64	0.39%	\$0.00	0.00%
14	\$208,093.08	0.43%	\$208,093.08	0.43%	\$111,900.83	0.23%
15	\$7,588.40	0.02%	\$7,588.40	0.02%	\$7,588.40	0.02%
16	\$426,305.52	0.89%	\$426,305.52	0.89%	\$244,744.56	0.51%
17	\$233,267.60	0.48%	\$233,267.60	0.48%	\$233,267.60	0.48%
18	\$8,132.36	0.02%	\$8,132.36	0.02%	\$8,132.36	0.02%
TOTAL	\$4,738,762.06	9.84%	\$4,746,516.73	9.85%	\$2,087,600.07	4.33%

Change Orders with Cumulative Total Greater than \$75,000

December 07, 2020 Commission Meeting

Project Number:	CIRB-225C(073)RB / CIRB-225C(074)RB		Contract ID:	180354	AGENDA ITEM 156J
Contractor :	OVERLAND CORPORATION		Job Piece No.:	27848(04)	
Designer:	CEC CORPORATION		Highway No.:	COUNTY ROAD	
Description:	GRADE, DRAIN, AND SURFACE COUNTY ROAD (INDIAN MERIDIAN ROAD/NS-323): FROM THE SH-29 JUNCTION, EXTEND SOUTH NEAR WYNNEWOOD. PROJECT LENGTH = 5.014 MILES				
Contract Amount:	\$5,076,832.92	Funds Available:	\$5,132,846.73	Funds Paid(%) :	94%
Change Order	4	Original Time Used:	99%	Revised Time Used:	99%

Request approval of Change Order No. 4 for a supplemental agreement and an additional appropriation in the amount of \$37,497.42.

Site Requirement: This change provides payment for the additional work required to repair significant erosion damage due to the heavy storm events in May 2019 in accordance with the Governor's Emergency Declaration 2019-19.

NEW ITEM			\$37,497.42
Construction Miscellaneous (Storm Damage Repair)	1.00	LSUM	\$37,497.42 /LSUM
			\$37,497.42

CHANGE ORDER ACTIONS						
CHANGE ORDER NO.	(+) Overrun (-) Underrun Amount (\$)	%	Appropriated Amount (\$)	%	Supplemental Agreement Amount(\$)	%
1	\$0.00	0.00%	\$0.00	0.00%	\$0.00	0.00%
2	\$16,351.18	0.32%	\$16,351.18	0.32%	\$16,351.18	0.32%
3	\$39,662.63	0.78%	\$39,662.63	0.78%	\$25,265.57	0.50%
4	\$37,497.42	0.74%	\$37,497.42	0.74%	\$37,497.42	0.74%
TOTAL	\$93,511.23	1.84%	\$93,511.23	1.84%	\$79,114.17	1.56%

Change Orders with Cumulative Total Greater than \$75,000

December 07, 2020 Commission Meeting

Project Number:	STP-136B(145)SS	Contract ID:	190356	AGENDA ITEM 156K	
Contractor :	EVANS & ASSOCIATES CONSTRUCTION CO., INC.	Job Piece No.:	24380(04)		
Designer:	OKLA. DEPT. OF TRANSPORTATION	Highway No.:	US-77		
Description:	WIDEN AND RESURFACE US-77: FROM 6.3 MILES NORTH OF THE SH-11W JUNCTION, EXTEND NORTH NEAR NEWKIRK. PROJECT LENGTH = 4.479 MILES				
Contract Amount:	\$9,346,021.75	Funds Available:	\$9,374,821.59	Funds Paid(%) :	35%
Change Order	2	Original Time Used:	47%	Revised Time Used:	45%

Request approval of Change Order No. 2 for a supplemental agreement and an additional appropriation in the amount of \$105,656.00.

Site Requirement: This change provides payment for the removal of concrete pavement pay item required to remove a layer of concrete discovered underneath the asphalt pavement during removal; for the overrun of the traffic bound surface course pay item required to backfill between stations 247+89.33 RT and 336+00.00 RT in lieu of the unclassified borrow as planned due to a request by the Resident Engineer; and for the overrun of the unclassified borrow pay item required to fill in the void left over from the concrete pavement removal. This change extends the contract time twenty-five days to complete this additional work.

NEW ITEM			\$63,209.40
Removal of Concrete Pavement	6,197.00 SY	\$10.20 /SY	\$63,209.40
OVERRUN ITEMS			\$42,446.60
Unclassified Borrow	2,065.00 CY	\$8.50 /CY	\$17,552.50
Traffic Bound Surface Course Type E	770.00 TON	\$32.33 /TON	\$24,894.10

CHANGE ORDER ACTIONS						
CHANGE ORDER NO.	(+) Overrun (-) Underrun Amount (\$)	%	Appropriated Amount (\$)	%	Supplemental Agreement Amount(\$)	%
1	\$28,799.84	0.31%	\$28,799.84	0.31%	\$6,295.84	0.07%
2	\$105,656.00	1.13%	\$105,656.00	1.13%	\$63,209.40	0.68%
TOTAL	\$134,455.84	1.44%	\$134,455.84	1.44%	\$69,505.24	0.74%

Change Orders with Cumulative Total Greater than \$75,000

December 07, 2020 Commission Meeting

Project Number:	ACERSTP-242C(056)ER	Contract ID:	160439	AGENDA ITEM
Contractor :	BRIDGECO CONTRACTORS, INC.	Job Piece No.:	32379(04)	156L
Designer:	CEC CORPORATION	Highway No.:	COUNTY ROAD	
Description:	BRIDGE AND APPROACHES COUNTY ROAD (EW-84/SEWARD ROAD): OVER COTTONWOOD CREEK, 4.3 MILES WEST OF US-77 NEAR GUTHRIE. PROJECT LENGTH = 0.249 MILE.			
Contract Amount:	\$1,025,064.43	Funds Available:	\$1,166,479.84	Funds Paid(%) : 100%
Change Order	5	Original Time Used:	98%	Revised Time Used: 98%

Request approval of Change Order No. 5 for an additional appropriation in the amount of \$1,551.53.

Site Requirement: This change provides payment for the additional expense incurred by the contractor due to the increase of the asphalt binder price index as provided for in the contract.

NEW ITEM

\$1,551.53

Asphalt Binder Price Adjustment

1.00 LS

\$1,551.53 /LS

\$1,551.53

CHANGE ORDER ACTIONS						
CHANGE ORDER NO.	(+) Overrun (-) Underrun Amount (\$)	%	Appropriated Amount (\$)	%	Supplemental Agreement Amount(\$)	%
1	\$0.00	0.00%	\$0.00	0.00%	\$0.00	0.00%
2	\$89,756.73	8.76%	\$89,756.73	8.76%	\$89,756.73	8.76%
3	\$51,658.68	5.04%	\$51,658.68	5.04%	\$25,672.50	2.50%
4	-\$553.79	-0.05%	\$0.00	0.00%	\$0.00	0.00%
5	\$1,551.53	0.15%	\$1,551.53	0.15%	\$0.00	0.00%
TOTAL	\$142,413.15	13.89%	\$142,966.94	13.95%	\$115,429.23	11.26%

Change Orders with Cumulative Total Greater than \$75,000

December 07, 2020 Commission Meeting

Project Number:	SBR-247C(025)SB				AGENDA ITEM
		Contract ID:	190384		156M
Contractor :	MANHATTAN ROAD & BRIDGE COMPANY			Job Piece No.:	
		Highway No.:	SH-58		
Designer:	GARVER ENGINEERING			Div. / County.:	06 / MAJOR
Description:	BRIDGE REHABILITATION SH-58: OVER CIMARRON RIVER, 0.4 MILES NORTH OF THE SH-8 JUNCTION NEAR RINGWOOD. PROJECT LENGTH = 0.361 MILE				
Contract Amount:	\$4,150,000.00	Funds Available:	\$4,272,673.44	Funds Paid(%) :	98%
Change Order	3	Original Time Used:	68%	Revised Time Used:	68%

Request approval of Change Order No. 3 for a supplemental agreement and an additional appropriation in the amount of \$147,502.04.

Site Requirement: This change provides payment for the additional work required to repair the top flanges of the steel beams on Bridge A due to discovering during construction they were more deteriorated than expected; and for the overrun of various pay items required to complete the project as specified due to differing site conditions. This change reclassifies the unit price for the repair bridge item Type C pay item for the portion in excess of 125% of the contract amount due to the significant overrun of this item of work. This change documents the underrun of the repair bridge item Type B pay item due to the area of concern being in better condition than expected.

NEW ITEMS			\$80,908.04
Repair Bridge Items (Bridge A Top Flange Repair)	1.00 LSUM	\$62,905.64 /LSUM	\$62,905.64
Repair Bridge Item (Type C) (Keeper Plates - Reclassified)	16.00 EA	\$1,125.15 /EA	\$18,002.40
OVERRUN ITEMS			\$79,094.00
Repair Bridge Item (Type C)	1.00 EA	\$10,000.00 /EA	\$10,000.00
Structural Steel	2,653.75 LB	\$12.00 /LB	\$31,845.00
Epoxy Coated Reinforcing Steel	7,586.00 LB	\$1.50 /LB	\$11,379.00
CLSM Backfill	47.00 CY	\$210.00 /CY	\$9,870.00
Repair Bridge Item (Type D)	2.00 EA	\$8,000.00 /EA	\$16,000.00
UNDERRUN ITEM			-\$12,500.00
Repair Bridge Item (Type B)	-1.00 EA	\$12,500.00 /EA	-\$12,500.00

CHANGE ORDER ACTIONS							
CHANGE ORDER NO.	(+) Overrun (-) Underrun Amount (\$)	%	Appropriated Amount (\$)	%	Supplemental Agreement Amount(\$)	%	
1	\$46,240.04	1.11%	\$46,240.04	1.11%	\$46,240.04	1.11%	
2	\$76,433.40	1.84%	\$76,433.40	1.84%	\$0.00	0.00%	
3	\$147,502.04	3.55%	\$147,502.04	3.55%	\$80,908.04	1.95%	
4	\$21,031.93	0.51%	\$21,031.93	0.51%	\$21,031.93	0.51%	
TOTAL	\$291,207.41	7.02%	\$291,207.41	7.02%	\$148,180.01	3.57%	

Change Orders with Cumulative Total Greater than \$75,000

December 07, 2020 Commission Meeting

Project Number:	SBR-247C(025)SB	Contract ID:	190384	AGENDA ITEM
Contractor :	MANHATTAN ROAD & BRIDGE COMPANY	Job Piece No.:	29477(04)	156N
Designer:	GARVER ENGINEERING	Highway No.:	SH-58	
Description:	BRIDGE REHABILITATION SH-58: OVER CIMARRON RIVER, 0.4 MILES NORTH OF THE SH-8 JUNCTION NEAR RINGWOOD. PROJECT LENGTH = 0.361 MILE			
Contract Amount:	\$4,150,000.00	Funds Available:	\$4,272,673.44	Funds Paid(%): 99%
Change Order	4	Original Time Used:	78%	Revised Time Used: 78%

Request approval of Change Order No. 4 for a supplemental agreement and an additional appropriation in the amount of \$21,031.93.

Site Requirement: This change provides payment for the additional work required to encase existing Columns No. 1 and 2 of Pier No. 1 on Bridge A due to discovering during construction that they were more deteriorated than expected.

NEW ITEM		\$21,031.93
Construction Miscellaneous (Column Encasement)	1.00 LSUM	\$21,031.93 /LSUM
		\$21,031.93

CHANGE ORDER ACTIONS						
CHANGE ORDER NO.	(+ Overrun - Underrun Amount (\$)	%	Appropriated Amount (\$)	%	Supplemental Agreement Amount(\$)	%
1	\$46,240.04	1.11%	\$46,240.04	1.11%	\$46,240.04	1.11%
2	\$76,433.40	1.84%	\$76,433.40	1.84%	\$0.00	0.00%
3	\$147,502.04	3.55%	\$147,502.04	3.55%	\$80,908.04	1.95%
4	\$21,031.93	0.51%	\$21,031.93	0.51%	\$21,031.93	0.51%
TOTAL	\$291,207.41	7.02%	\$291,207.41	7.02%	\$148,180.01	3.57%

Change Orders with Cumulative Total Greater than \$75,000

December 07, 2020 Commission Meeting

Project Number:	SSP-249C(049)SS / SSP-249C(052)SS			Contract ID:	200232	AGENDA ITEM 1560
Contractor :	OCCI, INC.			Job Piece No.:	31884(05)	
Designer:	BENHAM DESGIN			Highway No.:	SH-28	
Description:	BRIDGE REHABILITATION SH-28: OVER GRAND LAKE (PENSACOLA DAM AND SPILLWAYS), 0.6 MI, 2.5 MI AND 2.8 MI EAST OF SH-82 NEAR DISNEY. PROJECT LENGTH = 2.470 MILES					
Contract Amount:	\$13,806,014.18	Funds Available:	\$13,806,014.18	Funds Paid(%):	22%	
Change Order	2	Original Time Used:	12%	Revised Time Used:	12%	

Request approval of Change Order No. 2 for a supplemental agreement and an additional appropriation in the amount of \$145,005.00.

Site Requirement: This change provides payment for the additional work required to replace shelf angles at twenty-one locations throughout Bridge A due to discovering during construction they were damaged or missing.

NEW ITEM	\$145,005.00
Construction Miscellaneous (Shelf Angles)	21.00 EA \$6,905.00 /EA \$145,005.00

CHANGE ORDER ACTIONS						
CHANGE ORDER NO.	(+/-) Overrun/Underrun Amount (\$)	%	Appropriated Amount (\$)	%	Supplemental Agreement Amount(\$)	%
1	-\$5,300.00	-0.04%	\$0.00	0.00%	\$0.00	0.00%
2	\$145,005.00	1.05%	\$145,005.00	1.05%	\$145,005.00	1.05%
TOTAL	\$139,705.00	1.01%	\$145,005.00	1.05%	\$145,005.00	1.05%

Change Orders with Cumulative Total Greater than \$75,000

December 07, 2020 Commission Meeting

Project Number:	NHPPI-2350-(009)PM				AGENDA ITEM
		Contract ID:	180359		156P
Contractor :	ALLEN CONTRACTING, INC.		Job Piece No.:	09033(27)	
			Highway No.:	I-235	
Designer:	BENHAM DESIGN, LLC.		Div. / County.:	04 / OKLAHOMA	
Description:	GRADE, DRAIN, SURFACE, AND BRIDGE I-235: FROM THE NW 50TH INTERCHANGE, EXTEND NORTH IN OKLAHOMA CITY. PROJECT LENGTH = 0.957 MILE				
Contract Amount:	\$101,080,883.05	Funds Available:	\$106,009,415.77	Funds Paid(%) :	70%
Change Order	12	Original Time Used:	64%	Revised Time Used:	64%

Request approval of Change Order No. 12 for an additional appropriation in the amount of \$8,885.23.

Site Requirement: This change provides payment for the bridge smoothness incentive earned by the contractor for the exceptionally smooth concrete bridge deck and approach slabs on Bridge K as defined in the contract. This change imposes a deduction to the contract due to the newly constructed bridge deck and approach slabs on Bridge I failing to meet specification requirements for smoothness as provided for in the contract.

NEW ITEMS

\$8,885.23

Pavement / Bridge Smoothness Adjustment (Bridge K)	1.00 LSUM	\$9,579.55 /LSUM	\$9,579.55
Pavement / Bridge Smoothness Adjustment (Bridge I)	1.00 LSUM	-\$694.32 /LSUM	-\$694.32

CHANGE ORDER ACTIONS						
CHANGE ORDER NO.	(+ Overrun (-) Underrun Amount (\$)	%	Appropriated Amount (\$)	%	Supplemental Agreement Amount(\$)	%
1	\$24,133.76	0.02%	\$24,133.76	0.02%	\$24,133.76	0.02%
2	\$135,340.50	0.13%	\$135,340.50	0.13%	\$41,363.10	0.04%
3	\$291,507.80	0.29%	\$291,507.80	0.29%	\$0.00	0.00%
4	\$14,100.92	0.01%	\$14,100.92	0.01%	\$14,100.92	0.01%
5	\$61,159.00	0.06%	\$61,159.00	0.06%	\$61,159.00	0.06%
6	-\$16,700.00	-0.02%	\$0.00	0.00%	\$0.00	0.00%
8	\$35,817.97	0.04%	\$35,817.97	0.04%	\$35,817.97	0.04%
9	\$4,366,472.77	4.32%	\$4,366,472.77	4.32%	\$4,366,472.77	4.32%
12	\$8,885.23	0.01%	\$8,885.23	0.01%	\$0.00	0.00%
TOTAL	\$4,920,717.95	4.87%	\$4,937,417.95	4.88%	\$4,543,047.52	4.49%

Change Orders with Cumulative Total Greater than \$75,000

December 07, 2020 Commission Meeting

Project Number:	TAP-255D(328)AG		Contract ID:	170327	AGENDA ITEM 156Q
Contractor :	CROSSLAND HEAVY CONTRACTORS INC.		Job Piece No.:	31435(04)	
Designer:	OKLA. DEPT. OF TRANSPORTATION		Highway No.:	ENHANCEMENT TRAIL	
Description:	OKLA. DEPT. OF TRANSPORTATION				
Description:	ENHANCEMENT (TRAIL CONSTRUCTION) RAILROAD CORRIDOR WITH TRAIL: FROM S.E.15TH STREET, EXTEND NORTHWEST IN THE CITY OF MIDWEST CITY. PROJECT LENGTH = 1.030 MILES PREQUALIFICATION FOR THIS PROJECT HAS BEEN WAIVED. BOTH BID EXPRESS AND WRITTEN BIDS WILL BE ACCEPTABLE.				
Contract Amount:	\$525,980.00	Funds Available:	\$611,252.73	Funds Paid(%) :	100%
Change Order	6	Original Time Used:	67%	Revised Time Used:	63%

Request approval of Change Order No. 6 for an additional appropriation in the amount of \$13,310.31.

Site Requirement: This change provides payment for the final estimate due to the overrun of the solid slab sodding pay item. Additional quantities of this item were required to provide adequate permanent erosion control on all disturbed areas of the project due to changes to the slopes on the project which increased the disturbed area.

The cost of this change is partially offset by the underrun of other items of work.

OVERRUN ITEM	\$16,889.70
Solid Slab Sodding	2,814.95 SY \$6.00 /SY \$16,889.70

CHANGE ORDER ACTIONS						
CHANGE ORDER NO.	(+) Overrun (-) Underrun Amount (\$)	%	Appropriated Amount (\$)	%	Supplemental Agreement Amount(\$)	%
1	\$65,900.55	12.53%	\$65,900.55	12.53%	\$65,900.55	12.53%
2	\$6,061.82	1.15%	\$6,061.82	1.15%	\$6,061.82	1.15%
4	\$0.00	0.00%	\$0.00	0.00%	\$0.00	0.00%
5	\$13,310.36	2.53%	\$13,310.36	2.53%	\$0.00	0.00%
6	\$13,310.31	2.53%	\$13,310.31	2.53%	\$0.00	0.00%
TOTAL	\$98,583.04	18.74%	\$98,583.04	18.74%	\$71,962.37	13.68%

Change Orders with Cumulative Total Greater than \$75,000

December 07, 2020 Commission Meeting

Project Number:	TAP-255C(490)TP / NHPP-255N(489)EH	Contract ID:	190323	AGENDA ITEM
Contractor :	CROSSLAND HEAVY CONTRACTORS INC.	Job Piece No.:	32984(04)	156R
		Highway No.:	SH-66	
Designer:	R.L. SHEARS COMPANY	Div. / County.:	04 / OKLAHOMA	
Description:	PEDESTRIAN IMPROVEMENTS (TRAIL CONSTRUCTION) SH-66 MULTI-USE TRAIL: FROM MIDWEST BOULEVARD, EXTEND EAST IN THE CITY OF EDMOND. PROJECT LENGTH = 2.427 MILES			
Contract Amount:	\$3,498,010.71	Funds Available:	\$3,644,421.39	Funds Paid(%) : 93%
Change Order	3	Original Time Used:	81%	Revised Time Used: 81%

Request approval of Change Order No. 3 for a supplemental agreement and an additional appropriation in the amount of \$62,796.80.

Site Requirement: This change provides payment for the additional work required to return the area of Phase II construction back to its original state after the USACE shut down the project due to the City of Edmond not receiving approval for the proposed alignment on USACE property.

NEW ITEMS	\$30,775.80
Earthwork	1.00 LS \$21,296.00 /LS \$21,296.00
Seeding Method A	1.80 AC \$1,925.00 /AC \$3,465.00
Construction Miscellaneous (Fencing)	1.00 LSUM \$6,014.80 /LSUM \$6,014.80
OVERRUN ITEMS	\$32,021.00
Solid Slab Sodding	8,158.00 SY \$3.50 /SY \$28,553.00
Aggregate Base Type A	51.00 CY \$68.00 /CY \$3,468.00

CHANGE ORDER ACTIONS						
CHANGE ORDER NO.	(+ Overrun (-) Underrun Amount (\$)	%	Appropriated Amount (\$)	%	Supplemental Agreement Amount(\$)	%
1	\$125,014.26	3.57%	\$125,014.26	3.57%	\$0.00	0.00%
2	\$21,396.42	0.61%	\$21,396.42	0.61%	\$6,371.00	0.18%
3	\$62,796.80	1.80%	\$62,796.80	1.80%	\$30,775.80	0.88%
TOTAL	\$209,207.48	5.98%	\$209,207.48	5.98%	\$37,146.80	1.06%

Change Orders with Cumulative Total Greater than \$75,000

December 07, 2020 Commission Meeting

Project Number:	STP-255F(501)3B		Contract ID:	190295	AGENDA ITEM 156S
Contractor :	BUILT RIGHT CONSTRUCTION, LLC		Job Piece No.:	34180(04)	
Designer:	OKLA. DEPT. OF TRANSPORTATION		Highway No.:	MULTIPLE LOCATIONS	
Description:	JOINT SEAL/REPAIR I-35/US-77 NB/CITY STREETS (SOONER ROAD SB/WESTERN AVENUE): AT MULTIPLE LOCATIONS IN DIVISION IV. PROJECT LENGTH = 0.00 MILE				
Contract Amount:	\$814,538.55	Funds Available:	\$909,133.26	Funds Paid(%):	93%
Change Order	7	Original Time Used:	75%	Revised Time Used:	75%

Request approval of Change Order No. 7 for a supplemental agreement and an additional appropriation in the amount of \$2,452.87.

Site Requirement: This change provides payment for the final estimate due to the overrun of the elastomeric mortar pay item. Additional quantities of this pay item were required to complete repairs of the relief joints on the North and South ends of Bridge D.

The cost of this change is partially offset by the underrun of other items of work.

OVERRUN OF PREVIOUSLY ESTABLISHED C/O ITEM			\$3,329.63
Elastomeric Mortar (Br. D)	4.98 CF	\$668.60 /CF	\$3,329.63

CHANGE ORDER ACTIONS						
CHANGE ORDER NO.	(+) Overrun (-) Underrun Amount (\$)	%	Appropriated Amount (\$)	%	Supplemental Agreement Amount(\$)	%
1	\$0.00	0.00%	\$0.00	0.00%	\$0.00	0.00%
2	\$22,400.00	2.75%	\$22,400.00	2.75%	\$22,400.00	2.75%
3	\$2,000.00	0.25%	\$2,000.00	0.25%	\$2,000.00	0.25%
4	\$3,516.00	0.43%	\$3,516.00	0.43%	\$3,516.00	0.43%
5	\$58,363.83	7.17%	\$58,363.83	7.17%	\$48,123.83	5.91%
6	\$8,314.88	1.02%	\$8,314.88	1.02%	\$8,314.88	1.02%
7	\$2,452.87	0.30%	\$2,452.87	0.30%	\$2,452.87	0.30%
TOTAL	\$97,047.58	11.91%	\$97,047.58	11.91%	\$86,807.58	10.66%

Change Orders with Cumulative Total Greater than \$75,000

December 07, 2020 Commission Meeting

Project Number:	STP-157C(167)CI	Contract ID:	180107	AGENDA ITEM
Contractor :	RRY SERVICES LLC	Job Piece No.:	25528(04)	156T
Designer:	GUY ENGINEERING SERVICES, INC.	Highway No.:	COUNTY ROAD	
Description:	BRIDGE AND APPROACHES COUNTY ROAD (EW-28): OVER LITTLE DRUM CREEK, 7.8 MILES EAST OF THE NOBLE COUNTY LINE. PROJECT LENGTH = 0.955 MILE			
Contract Amount:	\$2,268,477.06	Funds Available:	\$2,290,191.01	Funds Paid(%) : 89%
Change Order	2	Original Time Used:	163%	Revised Time Used: 163%

Request approval of Change Order No. 2 for a supplemental agreement and an additional appropriation in the amount of \$54,590.96.

Site Requirement: This change provides payment for the additional work required to remove unsuitable subgrade material discovered during construction, and replace it with aggregate base and geotextile reinforcement. This change extends the contract time seven days to complete this additional work.

OVERRUN ITEMS			<u>\$48,816.30</u>
Aggregate Base Type A	708.42 CY	\$60.00 /CY	\$42,505.20
Unclassified Excavation	631.11 CY	\$10.00 /CY	\$6,311.10
OVERRUN OF PREVIOUSLY ESTABLISHED C/O ITEM			<u>\$5,774.66</u>
Geotextile Reinforcement	1,893.33 SY	\$3.05 /SY	\$5,774.66

CHANGE ORDER ACTIONS						
CHANGE ORDER NO.	(+ Overrun (-) Underrun Amount (\$)	%	Appropriated Amount (\$)	%	Supplemental Agreement Amount(\$)	%
1	\$21,713.95	0.96%	\$21,713.95	0.96%	\$21,713.95	0.96%
2	\$54,590.96	2.41%	\$54,590.96	2.41%	\$5,774.66	0.25%
TOTAL	\$76,304.91	3.36%	\$76,304.91	3.36%	\$27,488.61	1.21%

Change Orders with Cumulative Total Greater than \$75,000

December 07, 2020 Commission Meeting

Project Number:	SSP-013N(176)PM		Contract ID:	190370	AGENDA ITEM 156U
Contractor :	DUIT CONSTRUCTION COMPANY, INC.		Job Piece No.:	34329(04)	
Designer:	LOCHNER		Highway No.:	US-69	
Description:	PAVEMENT REHABILITATION US-69: FROM 0.5 MILES NORTH OF THE US-270 INTERCHANGE, EXTENDED NORTH IN MCALESTER. PROJECT LENGTH = 3.679 MILES				
Contract Amount:	\$6,365,930.45	Funds Available:	\$6,439,110.26	Funds Paid(%) :	99%
Change Order	3	Original Time Used:	82%	Revised Time Used:	82%

Request approval of Change Order No. 3 for a supplemental agreement and an additional appropriation in the amount of \$235,627.04.

Site Requirement: This change provides payment for the overrun of the concrete pavement pay item required to complete the project as specified due to an underestimation of the quantity needed for guardrail widenings, stem walls, and patching; and for the reclassification of the multi-polymer traffic stripe and traffic stripe removal pay items required to complete the project as planned due to these items being significantly underestimated in the plans.

NEW ITEMS				\$22,856.00
Traffic Stripe (Multi-Poly)(12" Wide)(Reclassified)	5,200.00 LF	\$2.08 /LF		\$10,816.00
Pavement Mrkng. Removal (Traf. Strp)(Reclassified)	86,000.00 LF	\$0.14 /LF		\$12,040.00
OVERRUN ITEM				\$220,000.64
P. C. Concrete for Pavement	2,125.61 CY	\$103.50 /CY		\$220,000.64
UNDERRUN ITEMS				-\$7,229.60
Traffic Stripe (Multi-Poly)(12" Wide)	-720.00 LF	\$2.93 /LF		-\$2,109.60
Pavement Marking Removal (Traffic Stripe)	-1,600.00 LF	\$3.20 /LF		-\$5,120.00

CHANGE ORDER ACTIONS						
CHANGE ORDER NO.	(+) Overrun (-) Underrun Amount (\$)	%	Appropriated Amount (\$)	%	Supplemental Agreement Amount(\$)	%
1	-\$12,648.68	-0.20%	\$0.00	0.00%	\$0.00	0.00%
2	\$73,179.81	1.15%	\$73,179.81	1.15%	\$7,381.50	0.12%
3	\$235,627.04	3.70%	\$235,627.04	3.70%	\$22,856.00	0.36%
TOTAL	\$296,158.17	4.65%	\$308,806.85	4.85%	\$30,237.50	0.47%

Change Orders with Cumulative Total Greater than \$75,000

December 07, 2020 Commission Meeting

Project Number:	SSP-263B(062)PM		Contract ID:	180301	AGENDA ITEM 156V
Contractor :	PBX CORPORATION		Job Piece No.:	29569(04)	
Designer:	AGUIRRE & FIELDS, L.P.		Highway No.:	US-270	
Description:	BRIDGE REHABILITATION US-270: OVER US-270B, 1.5 MILES NORTH OF THE SH-3E/SH-18 INTERCHANGE IN SHAWNEE. PROJECT LENGTH = 0.042 MILE				
Contract Amount:	\$1,860,996.72	Funds Available:	\$2,098,465.58	Funds Paid(%) :	97%
Change Order	4	Original Time Used:	100%	Revised Time Used:	100%

Request approval of Change Order No. 4 for an additional appropriation in the amount of \$9,802.49.

Site Requirement: This change provides payment for the final estimate due to the overrun of the Type A warning lights pay item. Additional quantities of this item were required to provide additional advance warning and ensure the safety of the traveling public during construction.

The cost of this change is partially offset by the underrun of other items of work.

OVERRUN ITEM		\$11,686.00
Warning Lights (Type A)	11,686.00 SD	\$1.00 /SD
		\$11,686.00

CHANGE ORDER ACTIONS						
CHANGE ORDER NO.	(+) Overrun (-) Underrun Amount (\$)	%	Appropriated Amount (\$)	%	Supplemental Agreement Amount(\$)	%
1	\$98,174.00	5.28%	\$98,174.00	5.28%	\$98,174.00	5.28%
2	\$83,435.60	4.48%	\$83,435.60	4.48%	\$23,540.00	1.26%
3	\$55,859.26	3.00%	\$55,859.26	3.00%	\$0.00	0.00%
4	\$9,802.49	0.53%	\$9,802.49	0.53%	\$0.00	0.00%
TOTAL	\$247,271.35	13.29%	\$247,271.35	13.29%	\$121,714.00	6.54%

Change Orders with Cumulative Total Greater than \$75,000

December 07, 2020 Commission Meeting

Project Number:	NHPPI-4000(096)3P / NHPPI-4000(097)3P		Contract ID:	200121	AGENDA ITEM 156W
Contractor :	HASKELL LEMON CONSTRUCTION CO.		Job Piece No.:	33336(04)	
Designer:	OKLA. DEPT. OF TRANSPORTATION		Highway No.:	I-40	
Description:	RESURFACE (ASPHALT AND UTBWC) I-40: FROM THE SH-18 JUNCTION, EXTEND EAST NEAR SHAWNEE. PROJECT LENGTH = 14.050 MILES		Div. / County.:	03 / POTTAWATOMIE	
Contract Amount:	\$5,924,420.29	Funds Available:	\$6,055,840.41	Funds Paid(%) :	87%
Change Order	2	Original Time Used:	89%	Revised Time Used:	73%

Request approval of Change Order No. 2 for a supplemental agreement and an additional appropriation in the amount of \$17,308.40.

Site Requirement: This change provides payment for the additional work required to replace the traffic striping in the gore areas at the I-40 and US-177 interchange to update the striping to current standards.

NEW ITEMS				\$17,308.40
Pavement Mrkng. Removal (Traf. Strp.)	2,000.00 LF	\$0.60 /LF		\$1,200.00
Traffic Stripe (Multi-Poly.) (8" Wide)	3,752.00 LF	\$2.20 /LF		\$8,254.40
Traffic Stripe (Multi-Poly) (12" Wide)	2,380.00 LF	\$3.30 /LF		\$7,854.00

CHANGE ORDER ACTIONS						
CHANGE ORDER NO.	(+) Overrun (-) Underrun Amount (\$)	%	Appropriated Amount (\$)	%	Supplemental Agreement Amount(\$)	%
1	\$131,420.12	2.22%	\$131,420.12	2.22%	\$40,415.70	0.68%
2	\$17,308.40	0.29%	\$17,308.40	0.29%	\$17,308.40	0.29%
TOTAL	\$148,728.52	2.51%	\$148,728.52	2.51%	\$57,724.10	0.97%

Change Orders with Cumulative Total Greater than \$75,000

December 07, 2020 Commission Meeting

Project Number:	NHPPI-4000-(248)FP / NHPPI-4000-(064)PM		Contract ID:	180251	AGENDA ITEM 156X
Contractor :	SHERWOOD CONSTRUCTION CO., INC.		Job Piece No.:	10618(07)	
Designer:	TETRA TECH		Highway No.:	I-40/US-64	
Description:	GRADE, DRAIN, SURFACE, BRIDGE, AND APPROACHES I-40/US-64: I-40, FROM 1.1 MI EAST OF US-59, EXTEND EAST. US-64, AT THE I-40 INTERCHANGE, NEAR SALLISAW. PROJECT LENGTH = 2.867 MILES				
Contract Amount:	\$42,434,900.32	Funds Available:	\$42,517,321.61	Funds Paid(%) :	87%
Change Order	3	Original Time Used:	59%	Revised Time Used:	59%

Request approval of Change Order No. 3 for a supplemental agreement and an additional appropriation in the amount of \$391,472.23.

Site Requirement: This change provides payment for the additional work required to patch and overlay additional areas of the project due to discovering during construction they were more deteriorated than expected. This change extends the contract time and milestone time one-hundred and four days (ninety-four days due to weather related delays in accordance with the Governor's Emergency Declaration EO 2019-19, and ten days to complete the additional patching and overlaying).

NEW ITEM		\$391,472.23
Construction Miscellaneous (Asphalt Patching & Overlay)	1.00 LSUM	\$391,472.23 /LSUM
		\$391,472.23

CHANGE ORDER ACTIONS						
CHANGE ORDER NO.	(+) Overrun (-) Underrun Amount (\$)	%	Appropriated Amount (\$)	%	Supplemental Agreement Amount(\$)	%
1	\$82,421.29	0.19%	\$82,421.29	0.19%	\$82,421.29	0.19%
2	-\$15,445.00	-0.04%	\$0.00	0.00%	\$0.00	0.00%
3	\$391,472.23	0.92%	\$391,472.23	0.92%	\$391,472.23	0.92%
TOTAL	\$458,448.52	1.08%	\$473,893.52	1.12%	\$473,893.52	1.12%

Change Orders with Cumulative Total Greater than \$75,000

December 07, 2020 Commission Meeting

Project Number:	NHPP-272N(205)PM / SSP-272N(206)PM			AGENDA ITEM	
Contractor :	BECCO CONTRACTORS, INC.			Contract ID:	180307
Designer:	WHITE ENGINEERING ASSOCIATES, INC.			Job Piece No.:	11477(04)
Description:	BRIDGE REHABILITATION SH-51/BROKEN ARROW EXPRESSWAY: OVER LEWIS AVE, RAILROAD, AND 15TH ST, 1.0 MI, 1.1 MI, AND 1.3 MI E OF US-75 IN TULSA. PROJECT LENGTH = 0.575 MILE				
Change Order	3	Funds Available:	\$12,835,737.20	Funds Paid(%) :	100%
		Original Time Used:	74%	Revised Time Used:	74%

Request approval of Change Order No. 3 for an additional appropriation in the amount of \$207,755.86.

Site Requirement: This change provides payment for the overrun of the cold milling and asphalt surfacing pay items required to repair the existing shoulders before utilizing them as a temporary detour due to discovering during construction that they were more deteriorated than expected; for the overrun of the concrete sidewalk pay item required to repair the sidewalks on Bridges G and H due to discovering during construction that they were more deteriorated than expected; and for the overrun of the repair bridge pay items required to complete the repairs to Bridges C and H due to these elements being more deteriorated than anticipated. This change alters the method of measurement for the cold milling pavement pay item from plan quantity to measured.

OVERRUN ITEMS				\$207,755.86
4" Concrete Sidewalk	91.89 SY	\$200.00 /SY		\$18,378.00
Superpave, Type S4 (PG 76-28 OK)	410.91 TON	\$100.00 /TON		\$41,091.00
Cold Milling Pavement	1,686.51 SY	\$4.00 /SY		\$6,746.04
Repair Bridge Items (Bridge H)	32.98 SY	\$530.00 /SY		\$17,479.40
Repair Bridge Items (Bridge C)	44.39 SY	\$530.00 /SY		\$23,526.70
Superpave, Type S4 (PG 76-28 OK)	822.38 TON	\$100.00 /TON		\$82,238.00
Cold Milling Pavement	4,574.18 SY	\$4.00 /SY		\$18,296.72

CHANGE ORDER ACTIONS						
CHANGE ORDER NO.	(+) Overrun (-) Underrun Amount (\$)	%	Appropriated Amount (\$)	%	Supplemental Agreement Amount(\$)	%
1	\$0.00	0.00%	\$0.00	0.00%	\$0.00	0.00%
2	\$38,737.20	0.30%	\$38,737.20	0.30%	\$38,737.20	0.30%
3	\$207,755.86	1.62%	\$207,755.86	1.62%	\$0.00	0.00%
TOTAL	\$246,493.06	1.93%	\$246,493.06	1.93%	\$38,737.20	0.30%

Change Orders with Cumulative Total Greater than \$75,000

December 07, 2020 Commission Meeting

Project Number:	ACNHPP-4400-(438)SS	Contract ID:	160333	AGENDA ITEM
Contractor :	SHERWOOD CONSTRUCTION CO., INC.	Job Piece No.:	21899(04)	156Z
Designer:	GARVER ENGINEERING	Highway No.:	I-44	
Description:	GRADE, DRAIN, SURFACE, AND BRIDGE I-44: FROM 1.0 MILE EAST OF THE I-244 INTERCHANGE, EXTEND WEST IN THE CITY OF TULSA. PROJECT LENGTH = 1.155 MILES.			
Contract Amount:	\$29,559,681.69	Funds Available:	\$30,676,591.81	Funds Paid(%) : 99%
Change Order	14	Original Time Used:	89%	Revised Time Used: 89%

Request approval of Change Order No. 14 for an additional appropriation in the amount of \$41,587.68.

Site Requirement: This change provides payment for the pavement smoothness incentive earned by the contractor for exceptionally smooth asphalt pavement as defined in the contract.

NEW ITEM

\$41,587.68

Pavement / Bridge Smoothness Adjustment (Roadway) 1.00 LSUM \$41,587.68 /LSUM \$41,587.68

CHANGE ORDER ACTIONS						
CHANGE ORDER NO.	(+) Overrun (-) Underrun Amount (\$)	%	Appropriated Amount (\$)	%	Supplemental Agreement Amount(\$)	%
1	-\$29.62	0.00%	\$0.00	0.00%	\$0.00	0.00%
2	\$2,493.15	0.01%	\$2,493.15	0.01%	\$2,493.15	0.01%
3	\$14,300.00	0.05%	\$14,300.00	0.05%	\$14,300.00	0.05%
4	-\$17,442.15	-0.06%	\$0.00	0.00%	\$0.00	0.00%
5	\$13,229.70	0.04%	\$13,229.70	0.04%	\$13,229.70	0.04%
6	\$150,000.00	0.51%	\$150,000.00	0.51%	\$0.00	0.00%
7	\$19,928.26	0.07%	\$19,928.26	0.07%	\$19,928.26	0.07%
8	\$49,047.35	0.17%	\$49,047.35	0.17%	\$49,047.35	0.17%
9	\$230,000.00	0.78%	\$230,000.00	0.78%	\$0.00	0.00%
10	\$48,803.44	0.17%	\$48,803.44	0.17%	\$48,803.44	0.17%
11	\$583,419.22	1.97%	\$583,419.22	1.97%	\$0.00	0.00%
12	\$3,434.00	0.01%	\$3,434.00	0.01%	\$3,434.00	0.01%
13	\$2,255.00	0.01%	\$2,255.00	0.01%	\$2,255.00	0.01%
14	\$41,587.68	0.14%	\$41,587.68	0.14%	\$0.00	0.00%
TOTAL	\$1,141,026.03	3.86%	\$1,158,497.80	3.92%	\$153,490.90	0.52%

Change Orders with Cumulative Total Greater than \$75,000

December 07, 2020 Commission Meeting

Project Number:	NHPPY-0244-2(501) / NHPPY-0244-2(504) / NHPPY-0244-2(507)	Contract ID:	140304	AGENDA ITEM
Contractor :	DUIT CONSTRUCTION COMPANY, INC./TTK CONSTRUCTION CO., INC JV	Job Piece No.:	26300(06)	156AA
Designer:	EST	Highway No.:	I-244	
Description:	PAVEMENT AND BRIDGE REHABILITATION I-244: BEGIN 1.5 MILES EAST OF US-75, EXTEND EAST. PROJECT LENGTH = 2.939 MILES.			
Contract Amount:	\$36,170,934.33	Funds Available:	\$37,715,529.23	Funds Paid(%) : 95%
Change Order	4	Original Time Used:	100%	Revised Time Used: 100%

Request approval of Change Order No. 4 for a supplemental agreement and an additional appropriation in the amount of \$50,600.99.

Site Requirement: This change provides payment for the overrun of the reinforcing steel and Class AA concrete pay items required to encase more columns and pier caps than planned due to discovering during construction they were in worse condition than expected; for the concrete sidewalk pay item required to repair a sidewalk under the bridge due to severe erosion damage; for the additional work required to expand a service pedestal to install all necessary power equipment; and for the early completion incentive earned by the contractor for achieving substantial completion on this project prior to the time allowed in the contract. This change provides for the utilization of Superpave asphalt surfacing in lieu of an ultra-thin bonded wearing course for temporary widening. This change extends the contract time twenty-one days and the Milestone No. 1 time sixty-one days for weather related delays in accordance with the Governor's Emergency Declaration EO 2015-23, and to complete the additional column and pier cap encasements, as well as additional steel beam, diaphragm and bearing pad repairs.

NEW ITEMS			\$816,067.48
Class AA Concrete	141.30 CY	\$1,204.37 /CY	\$170,177.48
Construction Miscellaneous (Service Pedestal)	4.00 EA	\$2,420.00 /EA	\$9,680.00
Incentive for Early Completion	60.00 DAY	\$10,000.00 /DAY	\$600,000.00
4" Concrete Sidewalk	482.80 SY	\$75.00 /SY	\$36,210.00
OVERRUN ITEMS			\$510,297.01
Reinforcing Steel	27,110.00 LB	\$1.24 /LB	\$33,616.40
Superpave, Type S4 (PG 76-28 OK)	3,337.89 TON	\$103.31 /TON	\$344,837.42
Superpave, Type S4 (PG 76-28 OK)	1,276.19 TON	\$103.31 /TON	\$131,843.19
UNDERRUN ITEM			-\$1,275,763.50
Ultra-Thin Bonded Wearing Course, Type C	-5,544.00 TON	\$117.15 /TON	-\$649,479.60
Ultra-Thin Bonded Wearing Course, Type C	-5,346.00 TON	\$117.15 /TON	-\$626,283.90

CHANGE ORDER ACTIONS						
CHANGE ORDER NO.	(+ Overrun - Underrun Amount (\$)	%	Appropriated Amount (\$)	%	Supplemental Agreement Amount(\$)	%
1	-\$336.93	0.00%	\$0.00	0.00%	\$0.00	0.00%
2	\$315,609.86	0.87%	\$315,609.86	0.87%	\$315,609.86	0.87%
3	\$1,000,000.00	2.76%	\$1,000,000.00	2.76%	\$0.00	0.00%
4	\$50,600.99	0.14%	\$50,600.99	0.14%	\$50,600.99	0.14%
6	\$228,985.04	0.63%	\$228,985.04	0.63%	\$0.00	0.00%
TOTAL	\$1,594,858.96	4.41%	\$1,595,195.89	4.41%	\$366,210.85	1.01%

Change Orders with Cumulative Total Greater than \$75,000

December 07, 2020 Commission Meeting

Project Number:	STP-272B(278)CI	Contract ID:	200085	AGENDA ITEM
Contractor :	CROSSLAND HEAVY CONTRACTORS INC.	Job Piece No.:	30703(04)	156BB
Designer:	WALTER P. MOORE & ASSOCIATES	Highway No.:	CITY STREETS	
Description:	GRADE, DRAIN, SURFACE, AND TRAFFIC SIGNALS CITY STREETS (EAST 116TH STREET NORTH); AT THE INTERSECTION OF NORTH 129TH EAST AVENUE IN OWASSO. PROJECT LENGTH = 0.426 MILE			
Contract Amount:	\$2,887,000.00	Funds Available:	\$2,986,037.60	Funds Paid(%) : 52%
Change Order	4	Original Time Used:	68%	Revised Time Used: 64%

Request approval of Change Order No. 4 for a supplemental agreement and an additional appropriation in the amount of \$108,163.33.

Site Requirement: This change provides payment for the additional work required to upgrade and relocate an 8-inch sanitary sewer force main to a 12-inch line due to discovering during construction that the existing line was in conflict with the proposed storm sewer. Funding for this work will be non-participating in nature. This change extends the contract time one hundred and seven days to complete this additional work as well as the additional work outlined on Change Order No. 2.

NEW ITEMS (NON-PARTICIPATING)		\$76,393.33
Sanitary Sewer Service Line	284.00 LF	\$202.54 /LF
Sanitary Sewer Service Line	48.00 LF	\$298.70 /LF
12" x 8" Reducer	1.00 EA	\$1,542.71 /EA
Construction Miscellaneous	7.00 EA	\$394.38 /EA
Standard Valve Box	3.00 EA	\$77.00 /EA
OVERRUN ITEMS (NON-PARTICIPATING)		\$31,770.00
12" x 12" x 12" Tee	1.00 EA	\$2,020.00 /EA
12" Gate Valve	2.00 EA	\$2,350.00 /EA
12" Plug	1.00 EA	\$445.00 /EA
8" Gate Valve	1.00 EA	\$1,300.00 /EA
24" Steel Casing	104.00 LF	\$160.00 /LF
12" 45 Degree Fitting	2.00 EA	\$960.00 /EA
12" 90 Degree Fitting	1.00 EA	\$1,000.00 /EA
8" 45 Degree Fitting	7.00 EA	\$535.00 /EA

CHANGE ORDER ACTIONS						
CHANGE ORDER NO.	(+) Overrun (-) Underrun Amount (\$)	%	Appropriated Amount (\$)	%	Supplemental Agreement Amount(\$)	%
1	\$47,245.00	1.64%	\$47,245.00	1.64%	\$47,245.00	1.64%
2	\$17,425.70	0.60%	\$17,425.70	0.60%	\$17,425.70	0.60%
3	\$34,366.90	1.19%	\$34,366.90	1.19%	\$34,366.90	1.19%
4	\$108,163.33	3.75%	\$108,163.33	3.75%	\$76,393.33	2.65%
TOTAL	\$207,200.93	7.18%	\$207,200.93	7.18%	\$175,430.93	6.08%

FOR PRESENTATION AT THE COMMISSION MEETING OF DECEMBER 7, 2020

AGENDA ITEM NO. 157

SUBJECT: PROPOSED BID OPENINGS

COUNTY: STATEWIDE

This item consists of the final February 2021 bid opening for \$85,857,049, the tentative March 2021 bid opening for \$118,412,307, and the tentative April 2021 bid opening for \$82,882,245.

The Department recommends Commission approval of the final February 2021, tentative March 2021 and the tentative April 2021 bid openings.

PROJECTS AWARDED			PROJECTS AWARDED		
LETTING MONTH		TOTAL	LETTING MONTH		TOTAL
NOVEMBER	2018	\$ 205,993,127	NOVEMBER	2019	\$ 100,182,781
DECEMBER	2018	\$ -	DECEMBER	2019	\$ -
JANUARY	2019	\$ 72,327,830	JANUARY	2020	\$ 152,348,707
FEBRUARY	2019	\$ 65,671,551	FEBRUARY	2020	\$ 107,297,269
MARCH	2019	\$ 38,083,890	MARCH	2020	\$ 63,688,215
APRIL	2019	\$ 100,665,648	APRIL	2020	\$ 88,401,664
MAY	2019	\$ 146,374,234	MAY	2020	\$ 166,889,675
JUNE	2019	\$ 101,798,131	JUNE	2020	\$ 44,395,646
JULY	2019	\$ 198,338,808	JULY	2020	\$ 78,150,113
AUGUST	2019	\$ 47,460,042	AUGUST	2020	\$ 152,409,740
SEPTEMBER	2019	\$ 30,450,469	SEPTEMBER	2020	\$ 146,416,153
OCTOBER	2019	\$ 86,317,051	OCTOBER	2020	\$ 57,463,903
TOTAL		\$ 1,093,480,781	TOTAL		\$ 1,157,643,866

Job/Piece	CD	Highway	MILES	Adv Con	Federal	State	Other	Total
34554 (04)	6	US064	0.990	0.00	0.00	500,000.00	0.00	500,000.00
ALFALFA		BANK PROTECTION SH-8: BANK PROTECTION AT EAST CLAY CREEK						
		SAP	-202C (046)	ES				
28830 (04)	5	ENHAN	0.000	0.00	437,548.65	0.00	109,387.16 (A)	546,935.81
BLAINE		ENHANCEMENT ROMAN NOSE STATE PARK LODGE TRAIL & SCENIC OVERLOOK						
		STP	-106E (125)	EH				
33009 (04)	5	ENHAN	0.000	0.00	737,247.98	0.00	184,312.00 (A)	921,559.98
BLAINE		PEDESTRIAN / BIKE IMPROVEMENTS OTR: ROMAN NOSE MULTI-USE TRAIL PHASE 3						
		TAP	-206E (058)	TP				
33010 (04)	5	ENHAN	0.000	0.00	235,486.80	0.00	58,871.70 (A)	294,358.50
BLAINE		PEDESTRIAN / BIKE IMPROVEMENTS OTR: ROMAN NOSE BOARDWALK TRAIL PHASE 2						
		TAP	-206E (059)	TP				
33680 (04)	7	CT ST	1.750	0.00	584,000.00	0.00	146,000.00 (B)	730,000.00
CADDO		RESURFACE ANADARKO: PETREE ROAD -FROM SW 6TH ST EXTENDING EAST TO SE 7TH (MILL, OVERLAY AND BRIDGE WIDENING)						
		STP	-208B (097)	CI				
20266 (11)	3	SH009	3.000	0.00	17,459,620.40	0.00	0.00	17,459,620.40
CLEVELAND		GRADE, DRAIN, BRIDGE & SURFACE SH-9: FROM 72ND AVE EAST, EAST TO 108TH AVE EAST IN NORMAN (INCLUDES BRIDGE OVER UNNAMED CREEK)						
		STP	-214B (103)	PM				
31122 (04)	7	COBRGE	0.070	0.00	369,978.00	0.00	796,853.00 (B)	1,166,831.00
COMANCHE		BRIDGE & APPROACHES BRIDGE AND APPROACHES (EW-154) OVER NINEMILE BEAVER CREEK, 2.2 MILES EAST OF ELGIN						
		STP	-216D (091)	CI				
35183 (04)	7	IS044	1.330	0.00	0.00	437,000.00	0.00	437,000.00
COTTON		RESURFACE I-44: FROM TEXAS SL, EXTEND EAST 1.33 MILES						
		SSR	-4400 (086)	SR				
29402 (04)	8	CO RD	0.600	0.00	203,000.00	0.00	1,497,000.00 (B)	1,700,000.00
CRAIG		BRIDGE & APPROACHES CO BR (BR30) OVER LITTLE CABIN CREEK 1.5 MI NORTH OF BLUEJACKET						
		STP	-218C (082)	CI				
34415 (04)	7	US277	4.300	0.00	0.00	1,261,000.00	0.00	1,261,000.00
GRADY		RESURFACE US-277: FROM I-44, EXTEND EAST 4.30 MILES						
		SSR	-226C (094)	SR				
31321 (04)	3	SH199	5.790	0.00	0.00	1,090,400.00	0.00	1,090,400.00
JOHNSTON		RESURFACE SH-199: BEGIN AT CARTER C/L EXTEND EAST 5.8 MILES						
		SSR	-235B (057)	SR				
33858 (04)	2	US059	10.520	0.00	0.00	800,000.00	0.00	800,000.00
LEFLORE		RESURFACE US-59: BEGIN AT JCT US-59/US-259, EXT NORTH 10.52 MI						
		SSR	-240N (085)	SR				
33334 (04)	3	SH102	5.000	0.00	0.00	900,000.00	0.00	900,000.00
LINCOLN		RESURFACE SH-102: BEGIN 2.0 MI NORTH OF SH-62 JCT, EXTEND NORTH 7.0 MI						
		SSR	-241C (075)	SR				
30365 (04)	7	IS035	0.200	0.00	2,344,253.18	260,472.58	0.00	2,604,725.76
LOVE		BRIDGE & APPROACHES I-35: COUNTY ROAD E2180 OVER I-35 9.3 MIS. N. OF THE TEXAS STATE LINE (IM EARMARK)						
		NHPP1	-3500- (061)	PM				

JobPiece	CD	Highway	MILES	Adv Con	Federal	State	Other	Total
33402(04)	6	US281	4.300	0.00	0.00	700,000.00	0.00	700,000.00
MAJOR		RESURFACE US-281: BEGIN 4.3 MILES SOUTH OG JCT US-412 EXTEND NORTH 4.3 MILES.						
		SSR -247B (034)	SR					
33404(04)	6	US412	6.800	0.00	0.00	1,800,000.00	0.00	1,800,000.00
MAJOR		RESURFACE US-412: BEGIN 9.3 MILES WEST OF JCT. US-60 EXTEND EAST 6.8 MILES						
		SSR -247N (035)	SR					
31889(04)	7	SH007	0.200	0.00	3,437,177.20	0.00	0.00	3,437,177.20
MURRAY		BRIDGE & APPROACHES SH 7: WESTBOUND BRIDGE OVER GUY SANDY CREEK 4.9 MIS. E. OF US 77						
		NHPP -250N (031)	PM					
30651(05)	1		0.000	0.00	0.00	29,486.00	0.00	29,486.00
MUSKOGEE		BRIDGE WATER PROOF SEAL DIVISION 1 BRIDGE WATER PROOF SEAL						
		SSP -251F (102)	PM					
33426(04)	4	US064	7.490	0.00	0.00	3,066,140.00	0.00	3,066,140.00
NOBLE		RESURFACE US-64: FROM GARFIELD C/L EAST TO I-35						
		SSR -252N (061)	SR					
33862(04)	4	IS035	7.220	0.00	4,764,496.00	1,191,124.00	0.00	5,955,620.00
NOBLE		RESURFACE I-35: FROM 0.35 MILES SOUTH OF US-77, EXTEND NORTH 7.22 MILES (MM 185 TO MM 192)						
		NHPPI -3500- (111)	PM					
31437(04)	4	ENHAN	0.000	0.00	500,000.00	0.00	165,000.00 (A)	665,000.00
OKLAHOMA		PEDESTRIAN / BIKE IMPROVEMENTS WEST PALMER LOOP TRAIL; MULTI-USE TRAIL ALONG WEST SIDE OF TINKER EXCLUSION ZONE, BEG @ S. END OF SOLDIER CR TRAIL & EXT TO S.E. 29TH ST. TAP -255D (330)	AG					
31480(26)	4	CT ST	0.000	0.00	180,000.00	0.00	0.00	180,000.00
OKLAHOMA		SAFETY IMPROVEMENT SRS - EASTSIDE ELEM. SCH. INFRASTRUCTURE SRS -255E (340)	ST					
34651(04)	4		0.000	0.00	1,600,000.00	400,000.00	0.00	2,000,000.00
OKLAHOMA		ITS CONSTRUCTION DYNAMIC MESSAGE SIGN INSTALLATION FOR I-35 NB AND SB AT MID POINTS & QUARTER POINTS (MULTIPLE LOCATIONS IN DISTRICT 3, 4, 7)						
		NHPPI -3500- (105)	IT					
34652(04)	4		0.000	0.00	1,600,000.00	400,000.00	0.00	2,000,000.00
OKLAHOMA		ITS CONSTRUCTION DYNAMIC MESSAGE SIGN INSTALLATION FOR I-40 EB AND WB AT MID POINTS & QUARTER POINTS (MULTIPLE LOCATIONS IN DISTRICTS 1, 3 & 5)						
		NHPPI -4000- (118)	IT					
29689(04)	8	SH125	0.770	0.00	6,999,908.00	0.00	0.00	6,999,908.00
OTTAWA		GRADE, DRAIN, BRIDGE & SURFACE SH-125 OVER I-44: (WILL ROGERS TURNPIKE), 6.8 MILES NORTH OF US-60						
		STP -258B (079)	PM					
29246(04)	2	US270	0.100	0.00	3,032,000.68	0.00	0.00	3,032,000.68
PITTSBURG		BRIDGE REHABILITATION US-270 OVER BLUE CREEK 12.4 MILES SE OF JCT US-69B						
		STP -261B (103)	PM					
23286(07)	3	SH099	2.000	0.00	2,305,143.09	2,305,142.06	0.00	4,610,285.15
PONTOTOC		WIDEN & RESURFACE SH-99: FROM 3.5 MI NORTH OF SH-99A, NORTH 2.0 MI						
		SSP -162B (192)	SS					
33373(04)	8	US169	1.620	0.00	0.00	500,000.00	0.00	500,000.00
ROGERS		RESURFACE US-169: FROM 5.74 MI NORTH OF TULSA C/L, EXTEND NORTH 1.62 MI						
		SSR -030N (073)	SR					

Job/Piece	CD	Highway	MILES	Adv Con	Federal	State	Other	Total	
33379 (04)	8	SH088	4.700	0.00	0.00	800,000.00	0.00	800,000.00	
RESURFACE									
ROGERS SH-88: FROM 4.71 MI SOUTH OF US-169, EXTEND NORTH 4.71 MI									
	SSR	-266C (092)	SR						
33380 (04)	8	SH088	7.180	0.00	0.00	1,230,000.00	0.00	1,230,000.00	
RESURFACE									
ROGERS SH-88: FROM SH-20, EXTEND NORTH 7.18 MI									
	SSR	-266C (093)	SR						
34222 (04)	8	SH020	1.440	0.00	5,989,000.00	0.00	0.00	5,989,000.00	
PAVEMENT REHABILITATION									
ROGERS SH-20: FROM SH-66 EXTEND EAST APPROX 1.44 MILES									
	STP	-266N (094)	PM						
33901 (04)	6	SH003	0.040	0.00	0.00	650,000.00	0.00	650,000.00	
BRIDGE REHABILITATION									
TEXAS SH-3 OVER CHIQUITA CREEK, 27. MI. W. OF BEAVER C/L									
	SBR	-017N (260)	SB						
34395 (04)	5	US183	9.300	0.00	0.00	6,000,000.00	0.00	6,000,000.00	
RESURFACE									
TILLMAN US-183 BEGIN 0.15 MI. S. OF US-183/SH-5C JCT., EXTEND N. 9.3 MI.									
	SSR	-271B (070)	SR						
28656 (04)	8	CT ST	0.250	0.00	400,000.00	0.00	100,000.00 (A)	500,000.00	
INTERSECTION MOD. & TRAF. SIGNALS									
TULSA INTERSECTION MOD & TRAFFIC SIGNALS @ 121ST & MINGO ROAD IN BIXBY									
	STP	-172B (533)	IG						
29449 (04)	6	SH034	0.100	0.00	1,060,000.00	4,240,000.00	0.00	5,300,000.00	
BRIDGE & APPROACHES									
WOODWARD SH-34 OVER NORTH CANADIAN RV., 0.8 MILES NORTH OF JCT. US-183									
	STP	-277B (049)	PM						
35 PROJECTS				GRAND-TOTALS	0.00	54,238,859.98	28,560,764.64	3,057,423.86	85,857,048.48

OTHER FUNDING CATEGORIES:

- (A) LOCAL /CITY MATCHING FUNDS
- (B) CO. IMPROVE. ROAD & BRIDGE

PREPARED BY PROGRAMS DIVISION

Job/Piece	CD	Highway	MILES	Adv Con	Federal	State	Other	Total
28704 (04)	5	CO RD	0.600	0.00	0.00	0.00	5,000,000.00 (A)	5,000,000.00
BLAINE		GRADE, DRAIN & SURFACE GRADE & SURFACE CO RD EW-94 (MC06-30C & 06-40C) FR NS-257 EXTEND W 5 MI THEN S 1 MI TO AMERICAN HORSE LAKE CIRB -206F (036) RB						
35090 (04)	5	US270	6.250	0.00	4,750,000.00	0.00	0.00	4,750,000.00
BLAINE		RESURFACE US-270: BEGIN 0.73 MI EAST OF US-270/SH-33 JCT, EXTEND EAST 6.25 MI NHPP -017N (274) 3P						
24094 (04)	7	SH009	5.740	0.00	5,288,121.35	10,604,905.33	0.00	15,893,026.68
CADDO		GRADE, DRAIN, BRIDGE & SURFACE SH-9: RECONSTRUCT ON OFFSET AND EXISTING ALIGN. FROM 5.64 MI WEST OF US-62 EXT EAST 5.74 MILES THRU US-62 INTERSECTION. STP -108B (166) SS						
31366 (04)	4	US281	4.400	0.00	1,070,030.00	0.00	0.00	1,070,030.00
CANADIAN		RESURFACE US-281 SPUR FROM 300 FEET NORTH OF THE JUNCTION OF US-281, SOUTHEAST 4.21 MILES NHPP -209N (082) 3P						
33455 (04)	7	US177	5.880	0.00	1,422,153.00	0.00	0.00	1,422,153.00
CARTER		RESURFACE US-177: SH-199 NORTH TO KEMP CREEK APPROX. 1.5 MILES SOUTH OF SH-53 STP -210B (078) 3P						
33407 (04)	6	US287	6.890	0.00	1,800,000.00	0.00	0.00	1,800,000.00
CTMARRON		RESURFACE US-287: FROM 7 MILES NORTH OF TEXAS STATE LINE, EXTEND NORTH 6.84 MILES NHPP -032N (007) 3P						
17020 (08)	4	CT ST	0.510	0.00	1,000,000.00	0.00	200,000.00 (B)	1,200,000.00
GARFIELD		GRADE, DRAIN & SURFACE ENID: N. CLEVELAND ST FROM WILLOW RD SOUTH 1/2 MILE TO S. SIDE OF RR TRACKS STP -224C (069) UR						
20970 (08)	3	IS035	3.210	0.00	20,794,586.04	0.00	0.00	20,794,586.04
GARVIN		GRADE, DRAIN & SURFACE I-35: FROM SH-19, NORTH 3.21 MI NHPP -3500- (086) PM						
35205 (04)	3	SH019	2.400	0.00	0.00	396,902.38	0.00	396,902.38
GARVIN		RESURFACE SH-19: RESURFACE BEGIN AT GRADY COUNTY LINE EXTEND EAST 2.4 MILES MC -225C (092) MD						
31980 (04)	4	COBRGE	0.040	0.00	800,000.00	0.00	200,000.00 (A)	1,000,000.00
KAY		BRIDGE & APPROACHES BRIDGE AND APPROACHES ON EW-23 OVER DEER CREEK, 0.5 MILES WEST, 1.0 MILES SOUTH AND 0.3 MILES WEST OF JCT. I-35/US-60 CN 135 STP -236D (086) CI						
33340 (04)	3	SH018	6.280	0.00	1,190,625.00	0.00	0.00	1,190,625.00
LINCOLN		RESURFACE SH-18: FROM SH-62 JCT, EXTEND NORTH 6.28 MI STP -241C (071) 3P						
33341 (04)	3	SH018	6.980	0.00	1,321,875.00	0.00	0.00	1,321,875.00
LINCOLN		RESURFACE SH-18: BEGIN 6.35 MI NORTH OF SH-62 JCT, EXTEND NORTH 6.98 MI STP -241C (076) 3P						
29459 (04)	3	SH059	0.020	0.00	3,060,228.48	765,056.60	0.00	3,825,285.08
MCCCLAIN		GRADE, DRAIN, BRIDGE & SURFACE SH-59 OVER CRINER CREEK, 5.03 MI SOUTH OF SH-39 STP -244C (072) PM						
33392 (04)	2	US259	5.230	0.00	2,800,000.00	0.00	0.00	2,800,000.00
MCCURTAIN		RESURFACE US-259/US-70: BEGIN 0.07 NORTH OF US-70/US-259/SH-3 JCT. AND EXTEND NORTH 5.24 MI NHPP -016N (014) 3P						

JobPiece	CD	Highway	MILES	Adv Con	Federal	State	Other	Total
34268 (04)	2	US070	2.400	0.00	1,000,000.00	0.00	0.00	1,000,000.00
MCCURTAIN		RESURFACE US-259/US-70: BEGIN 5.31 MI NORTH OF US-70/US-259/SH-3 JCT, EXTEND NORTH 2.40 MI WITH EXCEPTION NHPP -016N (015) 3P						
31072 (04)	8	SH010	0.200	0.00	0.00	1,013,400.00	0.00	1,013,400.00
NOWATA		BRIDGE REHABILITATION SH 10 REHAB BRIDGE OVER VERDIGRIS RIVER, 10.6 MI W CRAIG CO SBR -253C (059) SB						
29860 (04)	4	US177	1.000	0.00	6,199,448.46	6,199,448.46	0.00	12,398,896.92
PAYNE		WIDEN & RESURFACE US-177: FROM SH-51 NORTH 3 MILES TO LAKEVIEW ROAD IN STILLWATER. INCLUDES WIDENING FOR FIVE LANE SECTION FROM MCELROY TO LAKEVIEW STP -260B (056) PM						
24331 (04)	2	SH031	2.300	0.00	4,435,760.50	4,435,760.50	0.00	8,871,521.00
PITTSBURG		GRADE, DRAIN, BRIDGE & SURFACE SH-31 FROM 1.13 MI EAST OF MCALESTER, EAST 2.30 MI STP -161C (205) SS						
33755 (04)	3	SH048	2.800	0.00	0.00	426,629.16	0.00	426,629.16
PONTOTOC		RESURFACE SH-48- BEGIN 9.0 MI NORTH OF COAL C/L, EXT NORTH 2.8 MI MC -262C (063) MD						
29400 (04)	8	COBRGE	0.140	0.00	0.00	0.00	3,265,000.00 (A)	3,265,000.00
ROGERS		BRIDGE & APPROACHES CO BR (137) ON EW 590 AKA OLD HWY 33 BRIDGE OVER SH 88 AND UP RR APPX 1.4 MI NW OF INOLA CIRB -266D (061) RB						
33370 (04)	8	US412	4.950	0.00	2,150,000.00	0.00	0.00	2,150,000.00
ROGERS		RESURFACE US-412: FROM 5.47 MI WEST OF THE JCT WITH SH-88, EXTEND EAST 4.95 MI EB & WB NHPP -019N (144) 3P						
33454 (04)	7	SH007	7.990	0.00	3,175,161.00	0.00	0.00	3,175,161.00
STEPHENS		RESURFACE SH-7: FROM MM 7.62 EXTEND EAST 7.99 MILES NHPP -269N (077) 3P						
28899 (04)	8	IS444	1.150	0.00	18,827,215.44	0.00	0.00	18,827,215.44
TULSA		PAVEMENT REHABILITATION I-444 FROM SH 51 INTERCHANGE NORTH TO INDEPENDENCE (EAST LEG OF IDL) NHPEI -4440- (009) PM						
32729 (04)	8	US075	0.020	0.00	0.00	750,000.00	0.00	750,000.00
TULSA		BRIDGE REHABILITATION US-75: BRIDGE REHAB OVER APACHE AVE, 2.8 MI NORTH OF JCT. I-244 NB SBR -014N (111) SB						
32735 (04)	8	US075	0.200	0.00	0.00	500,000.00	0.00	500,000.00
TULSA		BRIDGE REHABILITATION US-75: ARCHER ST; BRIDGE REHAB OVER US-75, 2.8 MI NORTH OF JCT I-244 SBR -014N (112) SB						
34312 (04)	8	IS244	1.000	0.00	0.00	500,000.00	0.00	500,000.00
TULSA		BRIDGE REHABILITATION I-244 EB MINGO CRK SBR -2440 (032) SB						
33446 (04)	1	SH051	3.920	0.00	2,120,000.00	0.00	0.00	2,120,000.00
WAGONER		RESURFACE SH-51: BEGIN AT EAST END OF VERDIGRIS RIVER BRIDGES, EXTEND EAST 3.92 MI STP -273B (064) 3P						
33447 (04)	1	SH051	1.590	0.00	0.00	950,000.00	0.00	950,000.00
WAGONER		RESURFACE SH-51: BEGIN 12.91 MI EAST OF SH-72 JCT, EXTEND EAST 1.52 MI SSR -273B (065) SR						

<u>JobPiece</u>	<u>CD</u>	<u>Highway</u>	<u>MILES</u>	<u>Adv</u>	<u>Con</u>	<u>Federal</u>	<u>State</u>	<u>Other</u>	<u>Total</u>
28 PROJECTS			GRAND-TOTALS	0.00		83,205,204.27	26,542,102.43	8,665,000.00	118,412,306.70

OTHER FUNDING CATEGORIES:
(A) CO. IMPROVE. ROAD & BRIDGE
(B) LOCAL /CITY MATCHING FUNDS
PREPARED BY PROGRAMS DIVISION

Job/Piece	CD	Highway	MILES	Adv Con	Federal	State	Other	Total
33405 (04)	6	US083	6.000	0.00	2,100,000.00	0.00	0.00	2,100,000.00
BEAVER		RESURFACE US-83: BEGIN 6.25 MILES NORTH OF JCT. SH-3 EXTEND NORTH 6 MILES.						
		STP -204B (036)	3P					
33405 (05)	6	US083	4.980	0.00	1,800,000.00	0.00	0.00	1,800,000.00
BEAVER		RESURFACE US-83: BEGIN 12.25 MILES NORTH OF SH-3 JCT. EXTEND NORTH 5.2 MILES						
		STP -204B (037)	3P					
31365 (04)	4	US081	4.800	0.00	4,553,960.00	0.00	0.00	4,553,960.00
CANADIAN		RESURFACE US-81 FROM RR BRIDGE NORTH OF EL RENO, NORTH 4.79 MILES TO 0.15 MILE NORTH OF MEMORIAL RD.						
		NHPP -011N (113)	3P					
31365 (05)	4	US081	5.800	0.00	5,787,754.00	0.00	0.00	5,787,754.00
CANADIAN		RESURFACE US-81 FROM 0.15 MILE NORTH OF MEMORIAL RD, NORTH TO SH-3 (INCLUDING RAMP AT INTERCHANGE)						
		NHPP -011N (112)	3P					
33369 (04)	8	US059	7.620	0.00	1,440,000.00	0.00	0.00	1,440,000.00
CRAIG		RESURFACE US-59: FROM 7.67 MI SOUTH OF THE KANSAS STATE LINE, EXTEND NORTH 7.67 MI						
		STP -218B (096)	3P					
33368 (04)	8	SH066	3.320	0.00	1,740,000.00	0.00	0.00	1,740,000.00
CREEK		RESURFACE SH-66: FROM 3.63 MI WEST OF THE JCT WITH I-44, EXTEND EAST 3.32 MI						
		NHPP -219N (084)	3P					
24134 (11)	5		0.000	0.00	87,199.80	21,799.95	0.00	108,999.75
CUSTER		BRIDGE WATER PROOF SEAL DIVISION 5 SILANE TREATMENT NBIS: 18714, 31586, 13225, 10070, 31886, 31680, 31679, 30476, 31565						
		STP -220E (011)	PM					
31065 (04)	6	US270	5.000	0.00	2,800,000.00	700,000.00	0.00	3,500,000.00
HARPER		RESURFACE US-270/US-412: BEGIN 2.0 MILES E. OF JCT. US-183, EXTEND E. 5.0 MILES						
		NHPP -017N (266)	PM					
33884 (04)	7	US070	8.000	0.00	1,356,000.00	0.00	0.00	1,356,000.00
JEFFERSON		RESURFACE US-70: FROM 7.96 MI. E. OF US-70/SH-81 JCT. IN WAURIKA, E. 8 MI.						
		STP -234B (058)	3P					
31052 (04)	3	SH048	0.200	0.00	644,566.04	161,141.51	0.00	805,707.55
JOHNSTON		BRIDGE & APPROACHES SH-48 OVER SANDY CREEK, 0.60 MI NORTH OF JCT SH-7						
		STP -235C (055)	PM					
33397 (04)	2	SH001	0.160	0.00	0.00	500,000.00	0.00	500,000.00
LATIMER		JOINT SEAL/REPAIR SH-1 OVER BOGGS HOLLOW CREEK, 0.44 MI EAST OF JCT SH-2						
		SBR -239C (038)	SB					
27947 (04)	3	SH066	3.250	0.00	7,963,699.00	0.00	0.00	7,963,699.00
LINCOLN		WIDEN & RESURFACE SH-66: FROM OKLAHOMA C/L, EAST 3.25 MI TO SH-102 AT WELLSTON						
		STP -241C (073)	PM					
18859 (04)	2	US070	3.720	0.00	13,506,722.90	3,376,680.72	0.00	16,883,403.62
MCCURTAIN		GRADE, DRAIN & SURFACE US-70: BEGIN 3.08 MILES EAST OF CHOCTAW COUNTY LINE & EXTEND EAST 3.72 MILES						
		NHPP -022N (102)	SS					
18859 (10)	2	US070	0.830	0.00	4,281,003.01	1,070,250.75	0.00	5,351,253.76
MCCURTAIN		GRADE, DRAIN, BRIDGE & SURFACE US-70: BEGIN 2.25 MILES EAST OF CHOCTAW COUNTY LINE & EXTEND EAST 0.83 MILES						
		NHPP -022N (225)	PM					

Job/Piece	CD	Highway	MILES	Adv Con	Federal	State	Other	Total
33440 (04)	1	IS040	0.200	0.00	0.00	3,500,000.00	0.00	3,500,000.00
MCINTOSH		BRIDGE REHABILITATION I-40: US-266 UNDER, 0.60 WEST OF MUSKOGEE C/L						
		SBR	-4000 (107)	SB				
33342 (04)	3	SH056	3.560	0.00	912,600.00	0.00	0.00	912,600.00
OKFUSKEE		RESURFACE SH-56: FROM SEMINOLE C/L, EXTEND EAST 3.56 MI TO SH-48 JCT						
		STP	-254C (050)	3P				
32882 (12)	4	SH152	0.100	0.00	1,500,000.00	0.00	0.00	1,500,000.00
OKLAHOMA		BRIDGE REHABILITATION SH-152: EB & WB OVER NEWCASTLE ROAD						
		NHPP	-255N (535)	PM				
33776 (04)	4	IS040	3.000	0.00	1,135,424.00	0.00	0.00	1,135,424.00
OKLAHOMA		RESURFACE I-40 FROM MACARTHUR AVE TO MORGAN ROAD (BRIDGES EXCLUDED) IN OKC						
		NHPPI	-4000- (081)	3P				
32783 (04)	2	US270	2.000	0.00	1,000,000.00	0.00	0.00	1,000,000.00
PITTSBURG		RESURFACE US-270: BEGIN AT US-69 JCT, EXTEND EAST 2.0 MI						
		STP	-261N (096)	3P				
22973 (19)	3		0.000	0.00	87,200.00	21,800.00	0.00	109,000.00
PONTOTOC		BRIDGE WATER PROOF SEAL DIVISION 3: BRIDGE WATER PROOFING SEAL (SILANE)						
		STP	-262C (063)	PM				
23285 (12)	3		0.000	0.00	261,600.00	65,400.00	0.00	327,000.00
PONTOTOC		JOINT SEAL/REPAIR DIVISION 3: BRIDGE JOINT SEAL/REPAIR PROJECTS						
		STP	-262C (064)	PM				
28204 (04)	3	SH009A	6.830	0.00	900,000.00	0.00	0.00	900,000.00
POTTAWATOMIE		RESURFACE SH-9A: FROM SH-59, EXTEND NORTH 6.83 MI						
		STP	-263C (074)	3P				
28204 (05)	3	SH009A	3.390	0.00	633,000.00	0.00	0.00	633,000.00
POTTAWATOMIE		RESURFACE SH-9A: FROM 6.83 MI NORTH OF SH-59, EXTEND NORTH 3.39 MI						
		STP	-263C (075)	3P				
23145 (12)	2		0.000	0.00	0.00	872,000.00	0.00	872,000.00
PUSHMATAHA		BRIDGE PAINTING DIVISION 2: MAINTENANCE - VARIOUS LOCATIONS (BRIDGE PAINTING)						
		SSP	-264F (080)	PM				
33833 (04)	1	SH010	2.840	0.00	1,050,000.00	0.00	0.00	1,050,000.00
SEQUOYAH		RESURFACE SH-10: BEGIN 1.30 MI NORTH OF I-40 JCT, EXT NORTH 2.84 MI TO SH-100 JCT						
		STP	-268C (074)	3P				
30078 (05)	7		0.000	0.00	0.00	80,000.01	0.00	80,000.01
STEPHENS		BRIDGE WATER PROOF SEAL DIVISION 7: BRIDGE WATER PROOF SEAL NBIS: 19967, 20286, 31164, 30537, 30538, 17575						
		STP	-269E (083)	PM				
29652 (04)	6	SH003	6.520	0.00	4,160,000.00	1,040,000.00	0.00	5,200,000.00
TEXAS		RESURFACE SH-3: FROM 8.2 MILES EAST OF THE SH-136 JCT., EXTEND EAST 6.52 MILES						
		NHPP	-017N (267)	PM				
27073 (04)	8	US169	0.250	0.00	0.00	11,772,442.68	0.00	11,772,442.68
TULSA		BRIDGE & APPROACHES US-169 OVER 76TH STREET (SH-135), 8.7 MI. NORTH OF I-44						
		SSP	-272N (291)	PM				

11/17/2020
19:21.27

OKLAHOMA DEPARTMENT OF TRANSPORTATION
TENTATIVE APRIL 2021 BID OPENING

<u>JobPiece</u>	<u>CD</u>	<u>Highway</u>	<u>MILES</u>	<u>Adv Con</u>	<u>Federal</u>	<u>State</u>	<u>Other</u>	<u>Total</u>
28 PROJECTS			GRAND-TOTALS	0.00	59,700,728.75	23,181,515.62	0.00	82,882,244.37

OTHER FUNDING CATEGORIES:

PREPARED BY PROGRAMS DIVISION

**FOR PRESENTATION AT THE
OKLAHOMA TRANSPORTATION COMMISSION MEETING
DECEMBER 7, 2020
BY THE DIRECTOR OF OPERATIONS**

AGENDA ITEM NO.: 158

SUBJECT: Kolb Grading, LLC
Claim for Rock Excavation

PROJECT NO.: ACSTP-139B(049)SS, 20922(04)
Latimer County, Field District II

DESCRIPTION: Grade, Drain and Surface US-270: From 2.5 Miles East of
the Pittsburg County line.

This contract was awarded by the Oklahoma Transportation Commission in September, 2017 to Kolb Grading, LLC (Kolb) for a contract amount of \$5,477,511.60. Construction on this project started on January 8, 2018, with a contract time of 250 days.

The geotech report for this contract indicated that rock would be encountered throughout the project with the material on the eastern half being able to be ripped by conventional methods. However, during the course of construction, the rock encountered on the east end of the project was discovered to be too hard to be ripped, and required additional unanticipated work to excavate. The Residency and District both agreed that this added work qualified as a differing site condition and warranted additional payment to the contractor, and Change Order No. 3 was processed to address this issue.

When Change Order No. 3 was processed for payment of the rock excavation, it was realized that payment for the entire quantity excavated would exceed the Statutory Limit for the contract in the amount of \$207,642.08. On August 7, 2020, Kolb Grading submitted its claim for contract adjustment pursuant to Standard Specification Subsection 105.18, as required by Subsection 104.06, to recover these additional funds.

The entitlement for this claim is recognized by the Department, and it is recommended that the Commission authorize a settlement for this claim in the amount of Two-Hundred and Seven Thousand, Six-Hundred and Forty-Two Dollars, and Eight Cents (\$207,642.08).

FOR PRESENTATION AT THE DECEMBER 7, 2020 COMMISSION MEETING

Agenda Item No.: 159

Subject: 2020-2040 Oklahoma Public Transit Policy Plan

The Oklahoma Department of Transportation (ODOT), in collaboration with the Oklahoma Transit Association (OTA), and along with the help of many stakeholders, has completed the 2020-2040 Oklahoma Public Transit Policy Plan (OPTPP). Directed by the passage of House Bill 1365, the plan is a policy document that guides ODOT and OTA in the development, management, and operation of the state's public transit system over the next 20 years. The OPTPP does not focus on specific projects or service routes, but rather focuses on overall mobility strategies and priorities for improving transit service and connectivity.

Public involvement and stakeholder outreach were a vital part of developing the OPTPP. During the planning process, input was gathered from across Oklahoma from the general public as well as representatives from businesses, local governments, tribes, and transit service providers to understand their transportation priorities and needs.

Following this presentation and with Commission approval, the OPTPP will be submitted to the Governor and State Legislature.

Commission approval is recommended.

FOR PRESENTATION AT THE COMMISSION MEETING ON DECEMBER 7, 2020

AGENDA ITEM NO. 161

SUBJECT: Asset Preservation Plan

LOCATION: STATEWIDE - All Commission Districts

The Department has completed the proposed Asset Preservation Plan with consideration for the critical needs of Oklahoma's transportation infrastructure and the financial constraint mandated by the projected Federal and State funding availability. The Work Plan is balanced by District within the budgetary limitations of State fiscal years 2021 through 2024. The encompassed projects have been defined, validated and included in accordance with the transportation needs and priorities of the State.

Information Only; No Commission action required.

FOR PRESENTATION AT THE COMMISSION MEETING ON DECEMBER 7, 2020

AGENDA ITEM NO. 162

SUBJECT: 8-Year Construction Work Plan

LOCATION: STATEWIDE - All Commission Districts

The Department has completed the proposed 8-Year Construction Work Plan with consideration for the critical needs of Oklahoma's transportation infrastructure and the financial constraint mandated by the projected Federal and State funding availability. The Work Plan is balanced by District within the budgetary limitations of Federal fiscal years 2021 through 2028. The encompassed projects have been defined, validated and included in accordance with the transportation needs and priorities of the State.

The Department will ensure the long term budgetary integrity of the Plan and the continuity of the projects through the active management of the project development and delivery process.

Commission approval of the 2021 through 2028 Construction Work Plan is recommended.