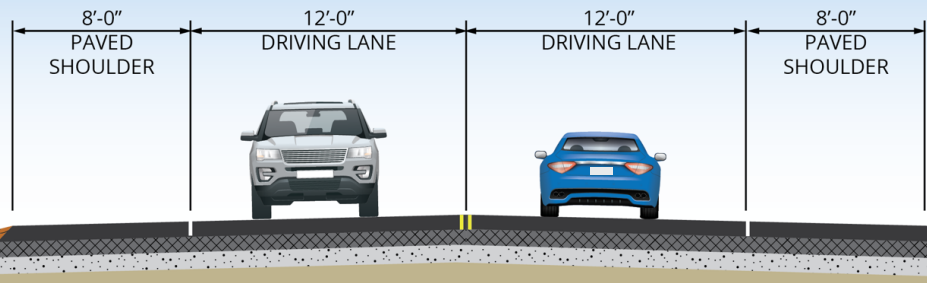


Notes

Proposed New Roadway



This image shows the future cross section of US-177 with two 12-foot lanes and 8-foot outside shoulders

District 7

ODOT District 7 Engineer: Jay Earp, P.E.

Murray County, Oklahoma



Total Road Miles*: 1,432.22
Total Interstate Miles*: 99.34
Total Bridges:** 788

Counties:
Caddo, Carter, Comanche, Cotton, Grady, Jefferson, Love, Murray, Stephens

*Totals **DO NOT** include Toll Roads
 Totals **DO NOT include County Bridges

Important Dates*



*Funding-dependent and subject to change



PUBLIC OPEN HOUSE

September 30, 2025

US-177 South of Sulphur in Murray County

From 8.9 Miles North of the Carter County Line extending North 2.3 Miles, JP 35162(04)

Location: Sulphur High School (Cafeteria)

700 W Broadway St, Sulphur, OK

When: 5:00 PM - 7:00 PM

MEETING PURPOSE

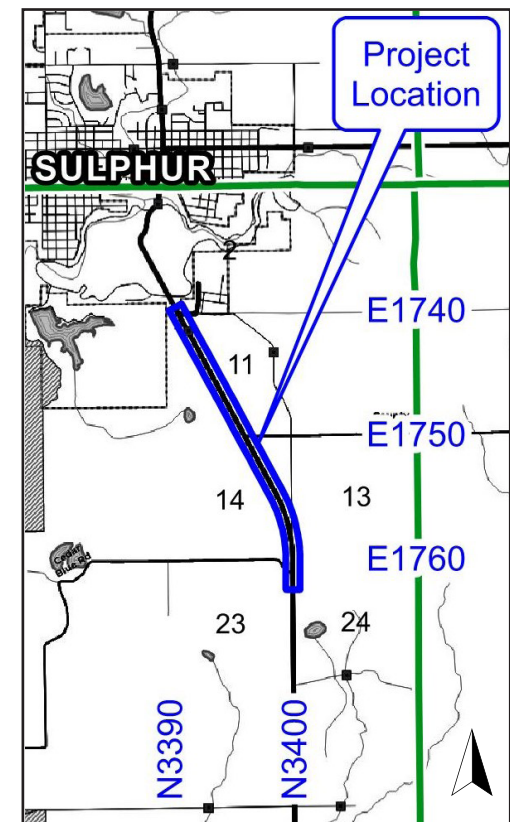
To show the changes planned for US-177 south of Sulphur and hear your thoughts. You can come anytime during the meeting. There won't be a presentation, but project team members will be available to answer questions.

PROJECT DESCRIPTION

Today, US-177 south of Sulphur is a two-lane road with narrow or no shoulders. It has many steep hills and dips that make it hard to see other cars. There are also several roads that meet US-177 at an angle, which also makes it difficult to see other cars when turning or crossing US-177. There are more crashes on this part of US-177 than other similar highways in the state, with a higher rate of fatal crashes happening here. About 3,500 vehicles use the highway every day, and this number is anticipated to increase to 5,600 vehicles per day by 2041.

This project aims to make US-177 safer. ODOT plans to rebuild the highway with two 12-foot lanes and 8-foot shoulders on the outside. The road will be widened on both sides to reduce impacts on nearby properties. Intersections with local roads will be rebuilt to meet US-177 at a straight angle. The existing concrete box culvert at Wilson Creek will be replaced with a larger structure to accommodate the new wider roadway.

US-177 will remain open during construction. The construction method hasn't been decided yet, but parts of US-177 could be reduced to one lane controlled by a signal or flagger during construction.



PLEASE PROVIDE YOUR COMMENTS BY OCTOBER 14, 2025

Submitted comments are subject to public review. Personal information will not be shared

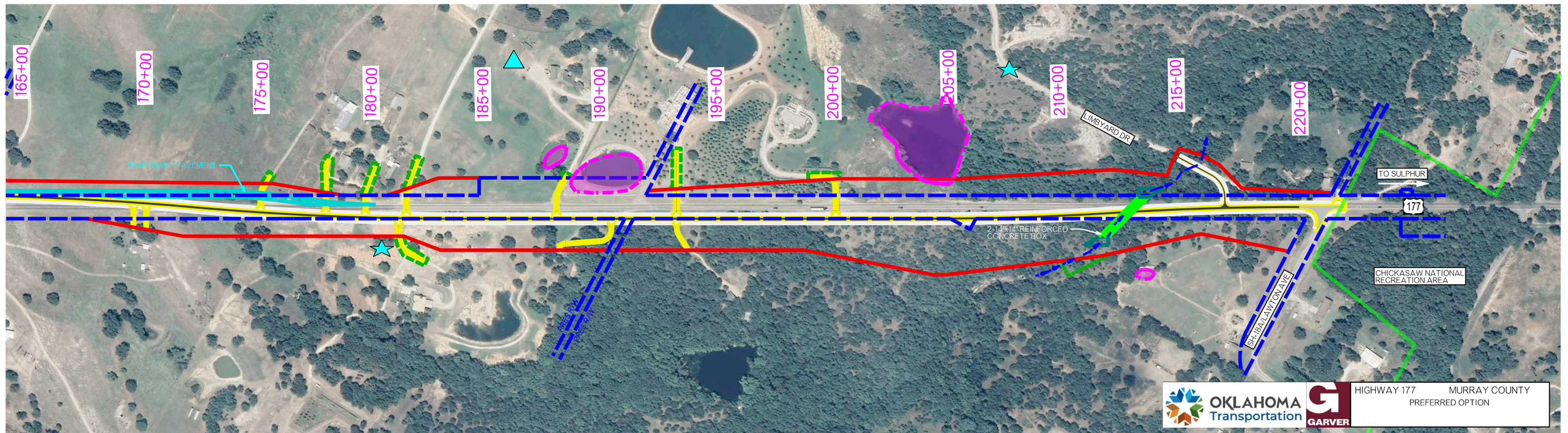
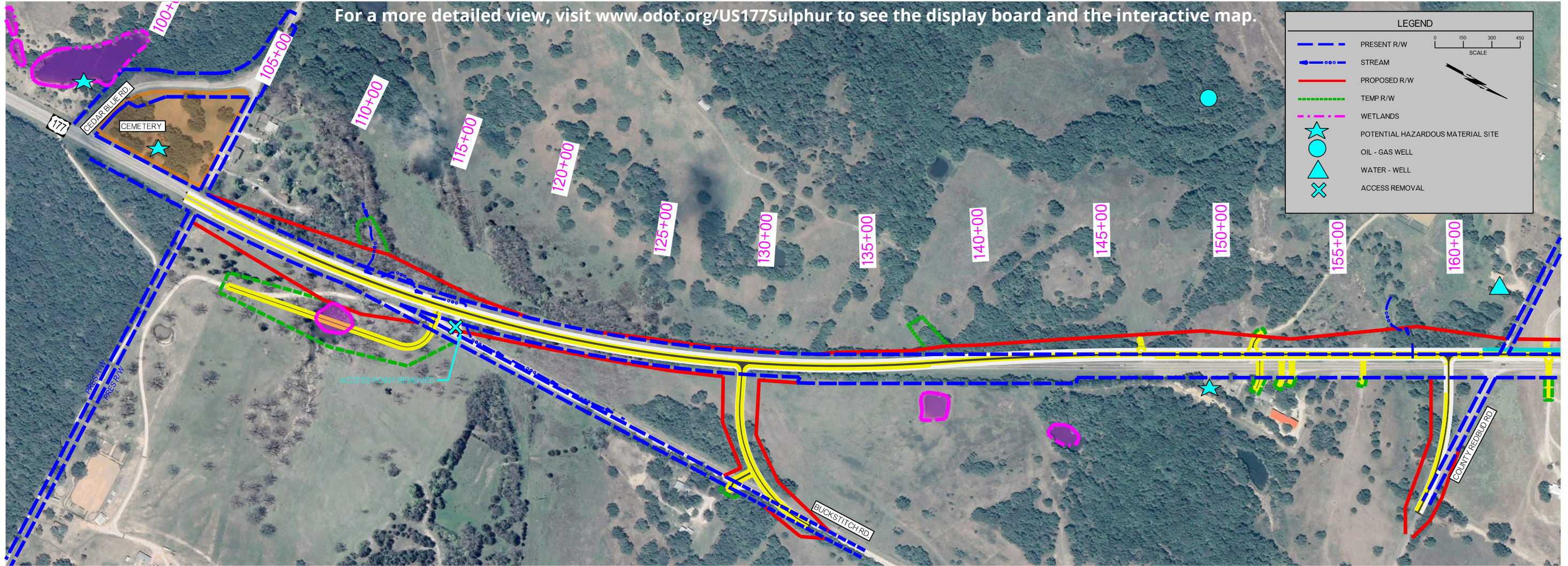


www.odot.org/PublicMeetings

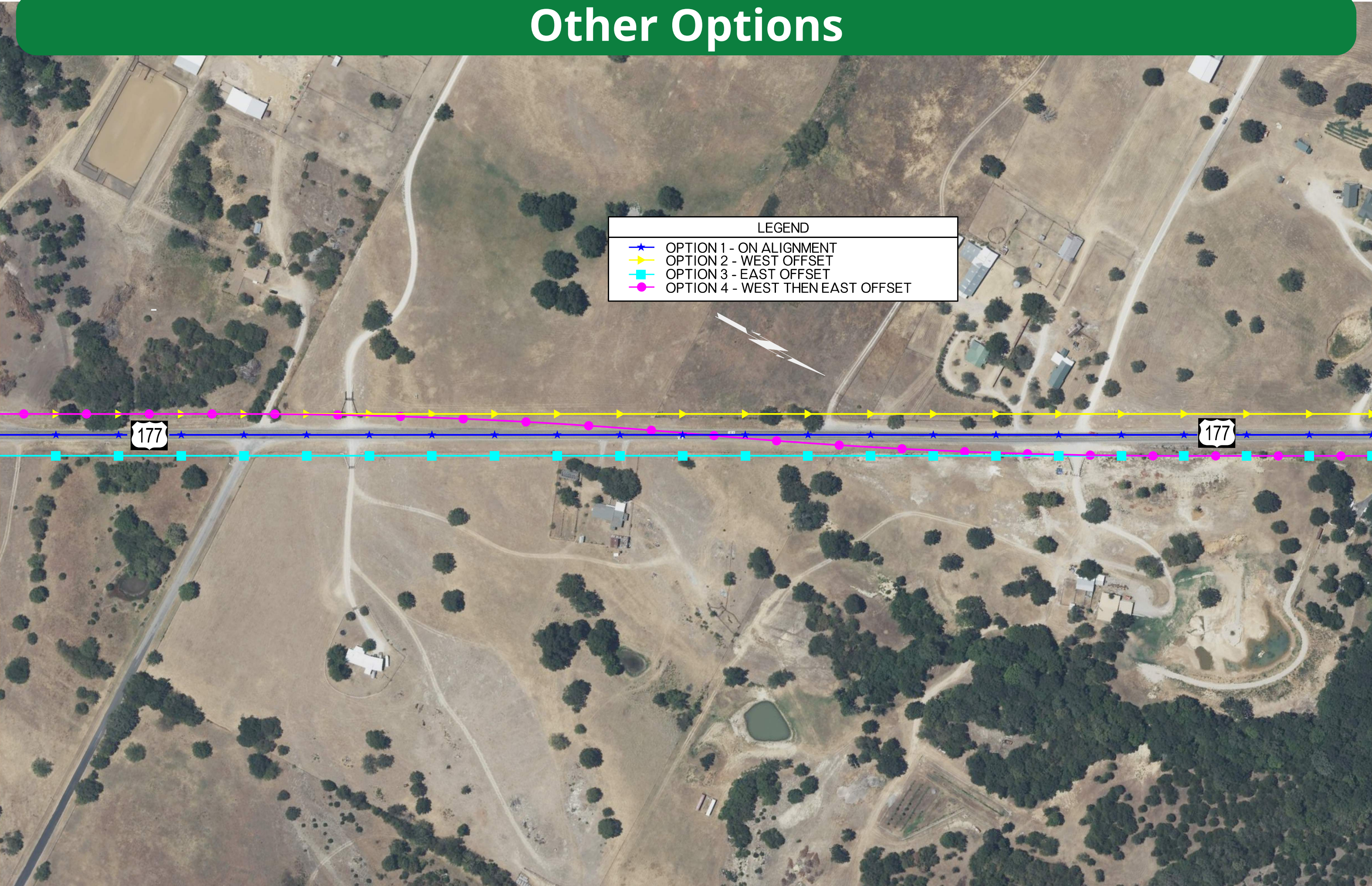
For more information about this project, contact:
(405) 325-3269 or Engage@odot.ok.gov

Preferred Option

For a more detailed view, visit www.odot.org/US177Sulphur to see the display board and the interactive map.



Other Options



LEGEND

- ★ OPTION 1 - ON ALIGNMENT
- ▶ OPTION 2 - WEST OFFSET
- OPTION 3 - EAST OFFSET
- OPTION 4 - WEST THEN EAST OFFSET

177

177