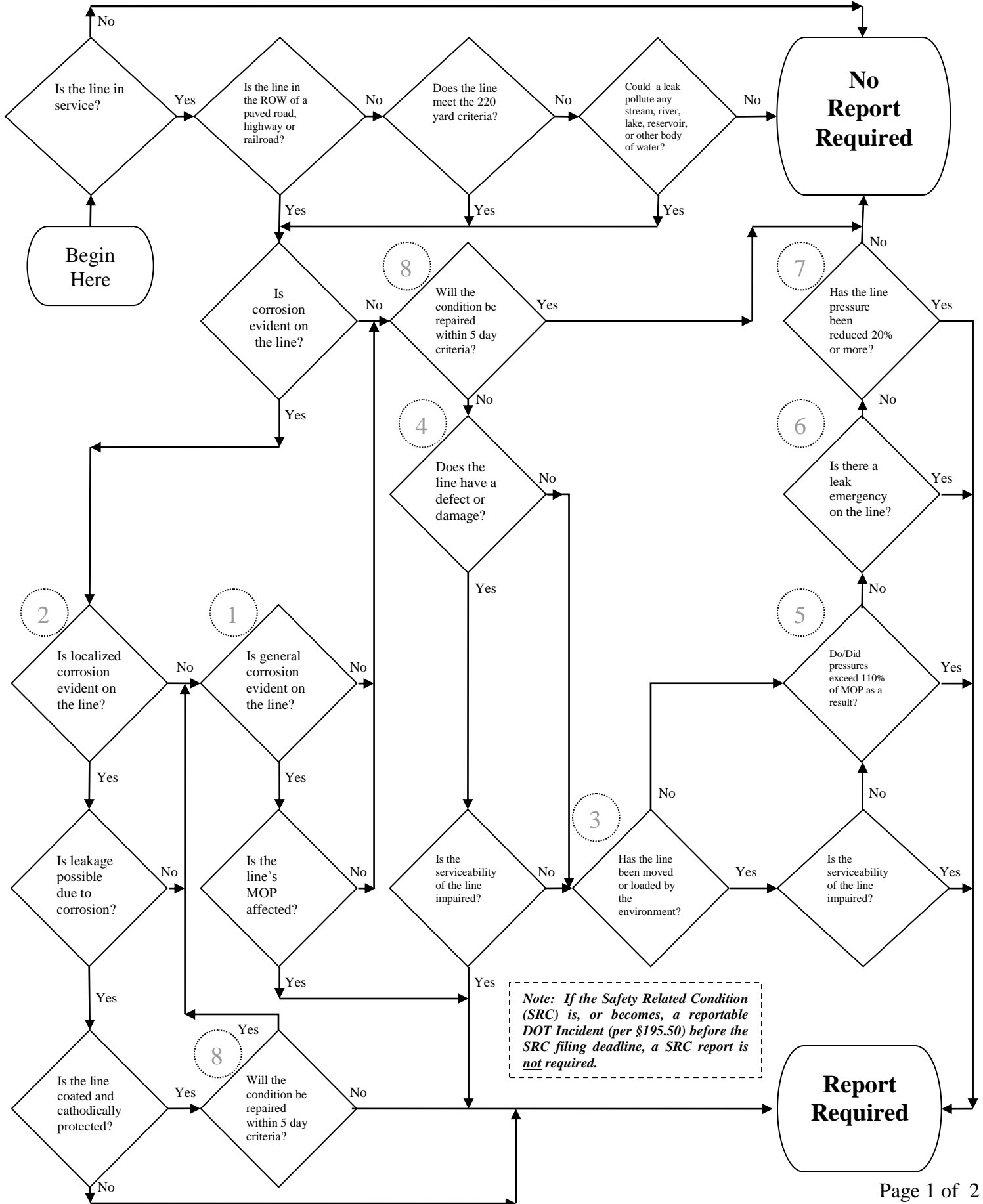


# Hazardous Liquid Safety Related Condition Evaluation For Reporting



## **Hazardous Liquid Safety-Related Condition Evaluation for Reporting (Flowchart Notes)**

### **General:**

1. In this part, the term *General corrosion that has reduced the wall thickness to less than that required for the maximum operating pressure, and localized corrosion pitting to a degree where leakage might result.*  
*Note:* The term *general corrosion* refers to corrosion pitting so closely grouped as to affect the overall strength of the pipeline.
2. Localized corrosion pitting of a pipeline where the pipeline is pitted to a degree where leakage might result.
3. Unintended movement or abnormal loading by environmental causes, such as an earthquake, landslide, or flood that impairs the serviceability of a pipeline.  
*Note:* The term *impairs the serviceability* refers to damage that could adversely affect safe operations.
4. Any material defect or physical damage that impairs the serviceability of a pipeline.  
*Note:* The term *impairs the serviceability* refers to damage that could adversely affect safe operations.
5. Any malfunction or operating error that causes the pressure of a pipeline to rise above 110% of its MOP.
6. A pipeline leak that constitutes an emergency.  
*Note:* Emergencies are characterized by the need for immediate operator corrective action to protect the public or property. Examples of leaks that may constitute an emergency are those that occur in residential or commercial areas in conjunction with a natural disaster, those where a flammable vapor is detected inside a building, and those that involve response by police or fire departments.
7. Any safety-related condition that could lead to an imminent hazard and causes (either directly or indirectly by remedial action of the operator), for purposes other than abandonment, a 20% or more reduction in operating pressure or shutdown of a pipeline.
8. Is corrected by repair or replacement in accordance with applicable safety standards before the deadline for filing the safety-related condition report. Specifically within 5 working days (not including Saturdays, Sundays, or Federal holidays) after the day a representative of the operator first determines that the condition exists.