

SUMMARY OF FINDINGS

SYSTEM EVALUATION

Comprehensive analysis revealed adequacies, deficiencies, and overlaps for the current airport system. System performance measures guided the system evaluation process. Each performance measure has a set of quantifiable benchmarks which determine current performance. Results are used to establish targets for future system performance.

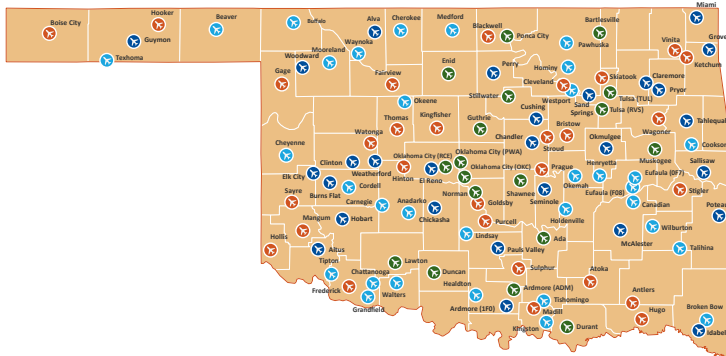
OKLAHOMA SYSTEM PERFORMANCE MEASURES	A SYSTEM THAT IS SAFE
	A SYSTEM THAT IS EFFICIENT
	A SYSTEM THAT IS ACCESSIBLE
	A SYSTEM THAT SUPPORTS THE ECONOMY
	A SYSTEM THAT MEETS USER NEEDS

AIRPORT ROLES AND FACILITY SERVICE OBJECTIVES

Each airport in Oklahoma plays a different role in their community based on the aircraft and customers it serves. Detailed investigation scored and ranked each airport to establish its system role as either a National Business, Regional Business, General, or Community airport. Each role category has facility and service objectives considered desirable for meeting user needs. Each airport's report card shows projects needed to meet system plan objectives. Report cards also reflect additional investment to address airport identified projects.

AIRPORTS IN OKLAHOMA ARE ASSIGNED TO ONE OF FOUR STATE ROLES:

- NATIONAL BUSINESS
- GENERAL
- REGIONAL BUSINESS
- COMMUNITY



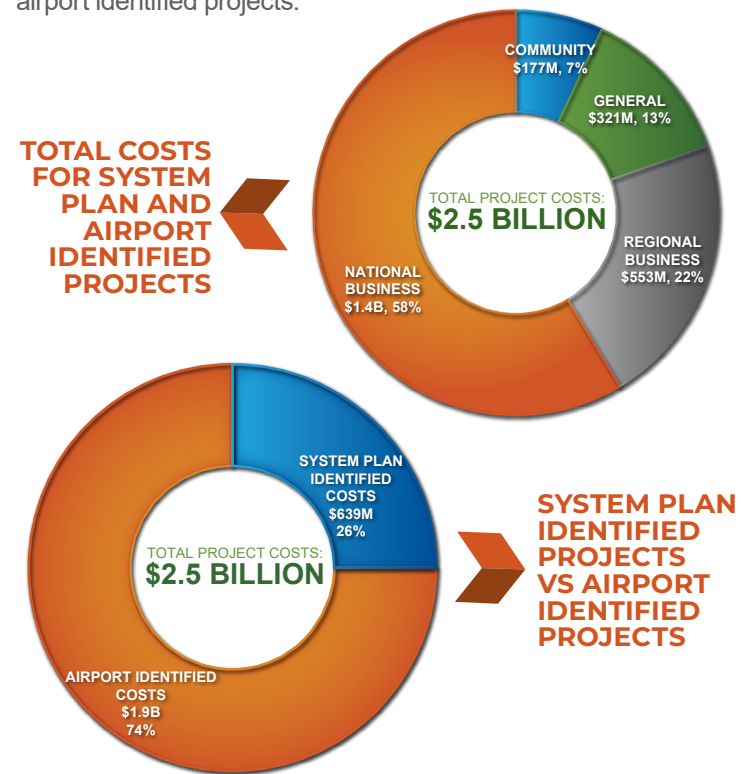
CONCLUSIONS

ESTIMATED COSTS

The Oklahoma airport system currently functions at a relatively high level, but if airports are able to meet their individual facility and service objectives, that performance could improve.

The final step in the system plan was to develop planning level cost estimates associated with improving system airports to meet their facility and service objectives. In addition, information was collected from study airports to identify other projects they plan to implement. Combining system plan identified projects with airport identified projects provides a more holistic understanding of the system's financial needs in the next 20 years.

Costs were summarized by airport role and allocated to show the costs needed to implement system plan identified projects and airport identified projects.



POTENTIAL FUNDING GAP

Considering all investment needs, an average of **\$125.1 million** would be needed in each of the next 20 years to fully address the identified costs. Review of historic and anticipated FAA, state, and local funding sources shows an average of **\$85.8 million** in funding could be available if current funding levels continue. This leaves a potential annual funding gap of **\$39.2 million**; considering this gap, it is important that available funding be strategically invested. It is also important to note that while the airports have an annual investment need of **\$125.1 million**, the airports return an estimated **\$10.6 billion** to the state's economy each year.

The system plan provides important information to OAC, helping to direct available funding to airport projects most essential to meeting the state's transportation needs and economic objectives.

FOR MORE INFORMATION CONTACT

Oklahoma Aeronautics Commission
110 N Robinson Ave. Suite 200 | Oklahoma City, OK 73102
405.604.6900 | oac.ok.gov



OKLAHOMA AIRPORT SYSTEM PLAN

BUFFALO MUNICIPAL AIRPORT BUFFALO, OKLAHOMA

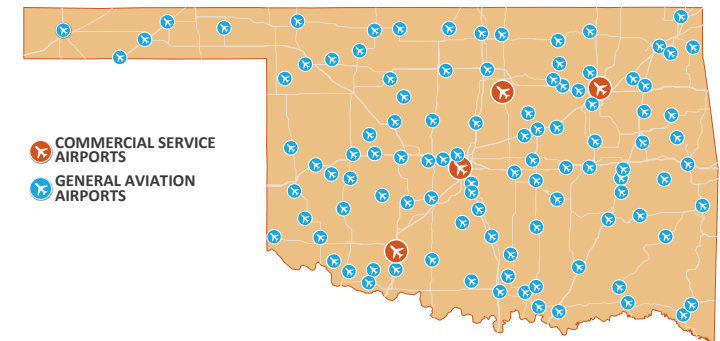


In late 2020, the Oklahoma Aeronautics Commission (OAC) undertook a comprehensive update to its State Airport System Plan. The plan was completed in 2022. This report summarizes major statewide findings, but it focuses primarily on the findings and recommendations from the plan for **Buffalo Municipal Airport**.

OKLAHOMA AIRPORT SYSTEM PLAN

The update to the Oklahoma Airport System Plan followed Federal Aviation Administration (FAA) guidelines. Airports in Oklahoma provide businesses, residents, and visitors with a high level of accessibility to a wide variety of airports and aviation services. Implementing strategic improvements and focused investment recommendations from the plan can elevate the airport system's current performance.

OKLAHOMA'S STATE AIRPORT SYSTEM



SYSTEM CHARACTERISTICS

- 108 total system airports**
- 4 airports with commercial airline service**
- 104 general aviation airports**
- 90% of airports included in FAA's National Plan of Integrated Airport Systems (NPIAS)**

Airports included in the NPIAS are eligible for FAA funding. FAA, OAC, and airport sponsor partnerships are important for maintaining and improving the airport system.

INVENTORY

The plan started with a comprehensive inventory effort; information was collected on airport activity, facilities, and services. Special inventory efforts focused on:

- Airport control of runway protection zones (RPZs)**
- Runway safety areas (RSAs) meeting FAA standards**
- Parallel runways/taxiways meeting separation standards**
- Primary runways with clear 20:1 approaches**
- Airports with property open for development**
- Hangar storage and general aviation terminal building characteristics**

Data collected as part of the system plan is stored in a Geographic Information System database; the database is accessible at oac.ok.gov.



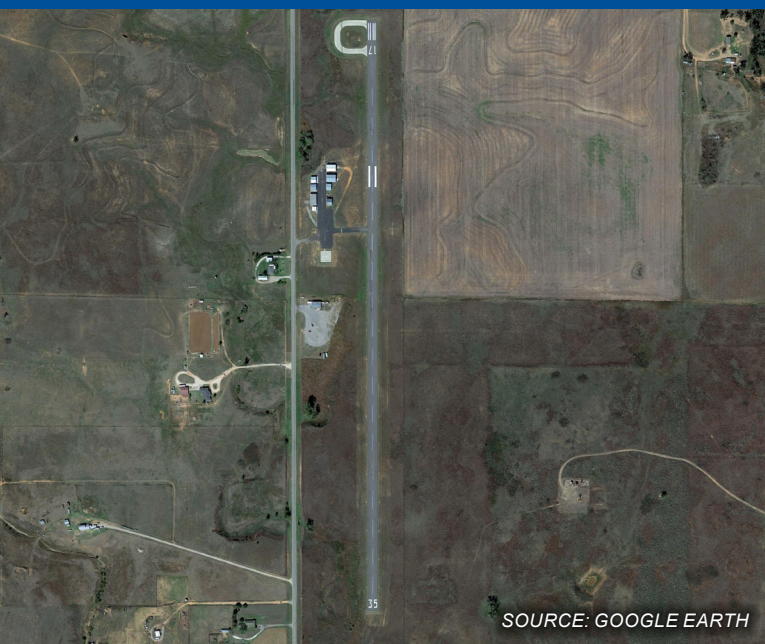
OKLAHOMA AIRPORT SYSTEM PLAN





OVERVIEW

The system plan identifies strategies for improving Oklahoma's 108 commercial and general aviation airports. Each airport's improvements identified in the system plan are focused on helping the airport meet its designated role in the state system. By implementing individual airport recommendations, a higher level of system-wide performance will be achieved. System plan findings and recommendations for **BUFFALO MUNICIPAL AIRPORT** are discussed in this report.



SOURCE: GOOGLE EARTH

BUFFALO MUNICIPAL AIRPORT (BFK)

BUFFALO, OKLAHOMA

KEY AIRPORT CHARACTERISTICS

- FAA/NPIAS ROLE: BASIC
- STATE ROLE: COMMUNITY
- OWNER: CITY OF BUFFALO
- PRIMARY RUNWAY: 17 / 35
- APPROACH TYPE: PUBLISHED
- BASED AIRCRAFT: 5
- SERVICES: -



AIRPORT ROLE

The system plan included detailed analysis to establish a role for each airport. The analysis assigned the **Buffalo Municipal Airport** to the Community role category. To determine the airport's role assignment, the following factors were considered:

- Total based aircraft, annual operations, and business jet activity
- Runway length, approach type, and air traffic control tower
- Airport reference code (ARC) and fuel type
- Community size and support, along with federal airport role
- Historic and projected rate of population and employment growth
- Business ready characteristics and annual economic impact

BUFFALO MUNICIPAL AIRPORT



COMMUNITY AIRPORT CHARACTERISTICS

- MINIMUM RUNWAY LENGTH OBJECTIVE:** 3,200 FEET
- MARKETS SERVED:** PREDOMINANTLY SERVE SMALL COMMUNITIES IN OKLAHOMA
- AIRCRAFT SUPPORTED:** SMALL TWIN AND SINGLE-ENGINE PLANES
- SUITED FOR:** TRAVEL TO LOCAL DESTINATIONS
- PRIMARY RUNWAY:** LIMITED RUNWAY SUPPORT
- FACILITY/SERVICE OBJECTIVES:** LIMITED IN SCOPE

FACILITY AND SERVICE OBJECTIVES

Airports in Oklahoma should ideally be equipped with facilities and services to fulfill their designated role in the state airport system. As part of the system plan a report card was developed for each airport. The report card compares current facilities and services to those for each airport's recommended role and any deficiencies are noted. Costs to address most noted deficiencies are also identified in the plan.

INVESTMENT TO SUPPORT AIRPORT IMPROVEMENT

Over the next 20 years, a total cost of **\$17.9 million** was identified to improve the **Buffalo Municipal Airport**. These costs include those needed to address both system plan and airport identified projects.

On an average annual basis, it is estimated that at least **\$890,000** will be needed to improve and maintain the airport. According to an OAC study, the airport has **\$300,000 in annual economic impact**. This benefit should be considered to provide context for the airport's estimated annual financial need.

FINDINGS FOR BUFFALO MUNICIPAL AIRPORT

Ideally, all airports should be improved to meet their system plan identified projects. Prior to implementation, some projects will require demand justification, master planning, environmental analysis, and engineering/permitting. Some airports may have constraints that preclude them from developing all system plan identified projects.

A snapshot of some of the more notable projects identified for **Buffalo Municipal Airport** follows. Appendix C of the System Plan's Technical Report contains a complete listing of airport and system plan identified projects for the airport.

AIRPORT REPORT CARD FOR BUFFALO MUNICIPAL AIRPORT

AIRPORT ROLE: COMMUNITY (LOW ACTIVITY)		AIRPORT NAME: BUFFALO MUNICIPAL		CITY: BUFFALO		LOCID: BFK	
FACILITIES	OBJECTIVE	ACTUAL	MEETS OBJECTIVE	IMPROVEMENT NEEDED		ESTIMATED COST	
AIRSIDE FACILITIES							
Airport Reference Code	A-1 or B-1 Small	B-1	Yes				
Primary Runway Length	3,200 ft	4,000 ft	Yes				
Primary Runway Width	60 ft	60 ft	Yes				
Taxiway Type	Not an Objective	Turnaround One RWY End	Not an Objective				
Runway Lighting	MIRL (if paved)	MIRL	Yes				
Taxiway Lighting	Not an Objective	None	Not an Objective				
Approach Type	Not an Objective	LNAV	Not an Objective				
Approach Lighting System	Not an Objective	None	Not an Objective				
Rotating Beacon	Yes	Yes	Yes				
Segmented Circle	Yes	No	No	Add Segmented Circle		\$25,000	
Wind Cone	Yes	Yes	Yes				
Visual Guidance Slope Indicator	Not an Objective	Neither End	Not an Objective				
Runway End Identifier Lights	Not an Objective	No REILs	Not an Objective				
Weather Reporting	Not an Objective	None	Not an Objective				
Primary RWY PCI	70	80	Yes				
Weight Capacity	12,500 SW	4,000 SW	No	Increase Weight Bearing Capacity		\$4,320,000	
Covered Storage	95% of Forecasted Based AC	100%	Yes				
Ramp Area	2,000 SY (3 spaces)	3,000 SY	Yes				
GENERAL AVIATION FACILITIES							
Terminal Building	Not an Objective	600 sqft	Not an Objective				
Restroom (24/7 or key code)	Not an Objective	Yes	Not an Objective				
Conference Area	Not an Objective	Yes	Not an Objective				
Pilot's Lounge	Not an Objective	Yes	Not an Objective				
Office Space for Airport Manager	Not an Objective	No	Not an Objective				
Public Waiting Area	Not an Objective	Yes	Not an Objective				
SERVICES							
Fuel	Not an Objective	No Fuel	Not an Objective				
Jet Fuel (24/7 trucking)	Not an Objective	No	Not an Objective				
Fixed-Base Operator	Not an Objective	No	Not an Objective				
Aircraft Maintenance	Not an Objective	No Maintenance	Not an Objective				
Ground Transportation	Not an Objective	Yes	Not an Objective				
Overnight Aircraft Storage	Not an Objective	0 spaces	Not an Objective				
GPU	Not an Objective	No	Not an Objective				
LAV Service Cart	Not an Objective	No	Not an Objective				
COMPLIANCE WITH FAA GUIDANCE							
RPZ Control	Airport Controls all RPZs	Partial Control	No	Secure Full Control of RWY End 17 / 35		\$14,000	
RSA Standards	Compliance with RSA Standards	120' x 240' beyond RWY end	Yes				
Runway/Taxiway Separation	225 ft	N/A	-				
Height Zoning	Jurisdiction with Height Zoning Ordinance	No Height Zoning Ordinance	No	Identify or Establish Height Zoning Ordinance		*	
20:1 Surface Obstructions	20:1 Surface Clear of Obstructions	Obstruction on RWY End 17	No	Address Obstruction on RWY End 17		\$64,000	
						System Plan Project Cost Subtotal:	\$4,359,000

*Costs are provided only if available from airport identified project list

BFK

PROJECTS FOR CONSIDERATION

- INSTALL SEGMENTED CIRCLE
- IMPROVE RUNWAY STRENGTH
- CONSTRUCT TURNAROUNDS*
- OBTAIN AVGAS FUEL*
- CONSTRUCT ADDITIONAL HANGARS*

*Indicates airport identified project