

NETL's Technical Assistance Strategy in Support of the DOE-EPA Methane Emissions Reduction Program (MERP)

Markus G. Drouven

October 2023

NETL is committed to providing technical assistance to states, Tribal governments, federal agencies and other stakeholders in support of the MERP.



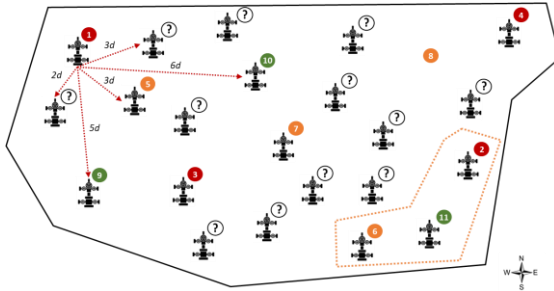
Overview: NETL's Technical Assistance Strategy in Support of the MERP



More info?
Contact Markus!

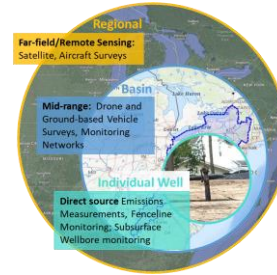
Marginal Wells Emissions

Data & Decision-Support Tools



Build open-access databases, identify emissions proxies, develop software decision-support tools

Field Work & Mitigation Support

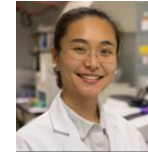


emissions measurement field surveys, monitoring and plugging best practices guides

Technical Assistance & Program Outreach



Natalie Pekney, Ph.D.
Air Quality and GHG Emissions Expert



Ruishu Wright, Ph.D.
Advanced Sensors Expert



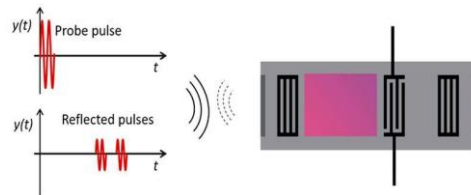
Jennifer Bauer, Ph.D.
Geo-Data & Advanced Analytical Expert



Ellis Rosenbaum, Ph.D.
Advanced Remediation Expert

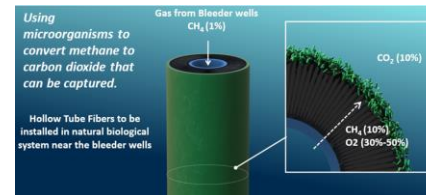
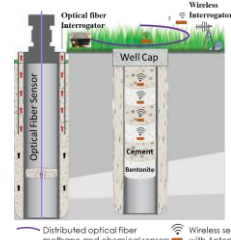
Oil & Gas Emissions

Advanced Sensor Technologies



methane sensor technologies demonstration and deployment at scale

Advanced Mitigation Technologies



novel mitigation methods, optimization-based decision-support tools



Markus Drouven, Ph.D.
Oil & Gas Systems Expert



Greg Lackey, Ph.D.
Well Integrity Expert

And many more...!

"1-800-NETL-HELP" resource for the emissions mitigation community

The NETL technical team is eager to engage with the emissions mitigation community.



More info?
Contact **Markus!**

Thank You!

For questions, comments, suggestions, please contact:

Markus Drouven

Technical Director, National Emissions Reduction Initiative, DOE-NETL

Email: Markus.Drouven@netl.doe.gov

Phone: [412-386-9188](tel:412-386-9188)