

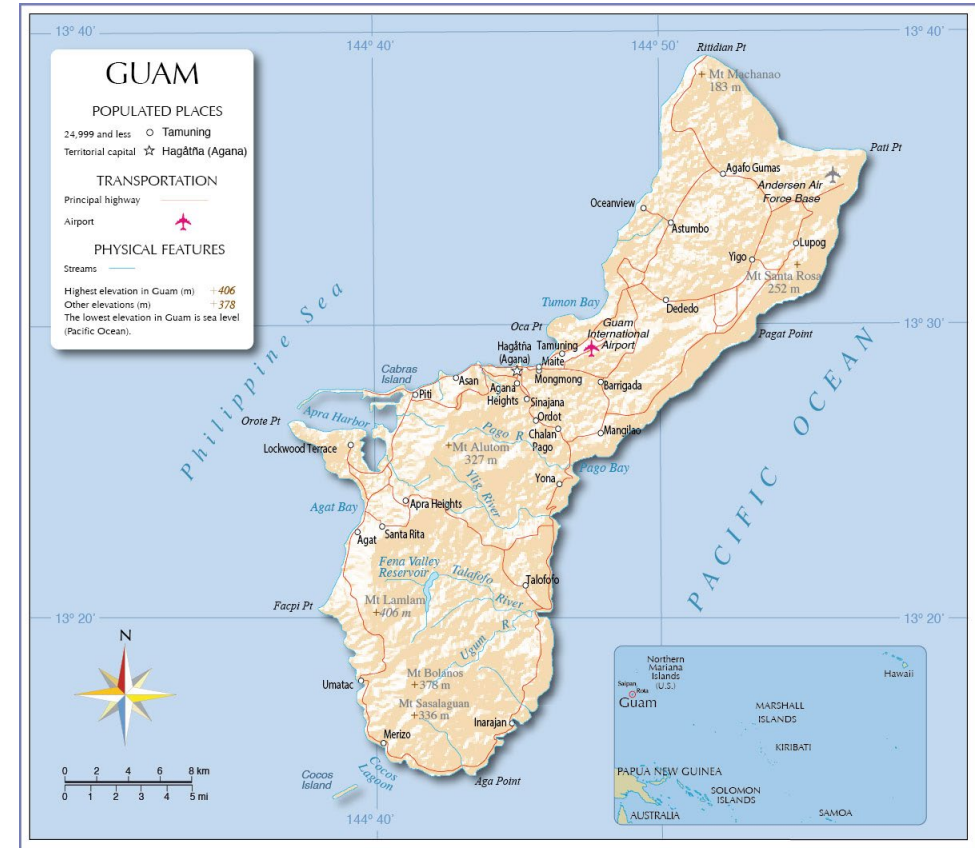


A Utah Fan's Perspective on Public Lands IOGCC 2023 Annual Conference – Park City, UT

John Baza | Director, Division of Oil, Gas and Mining

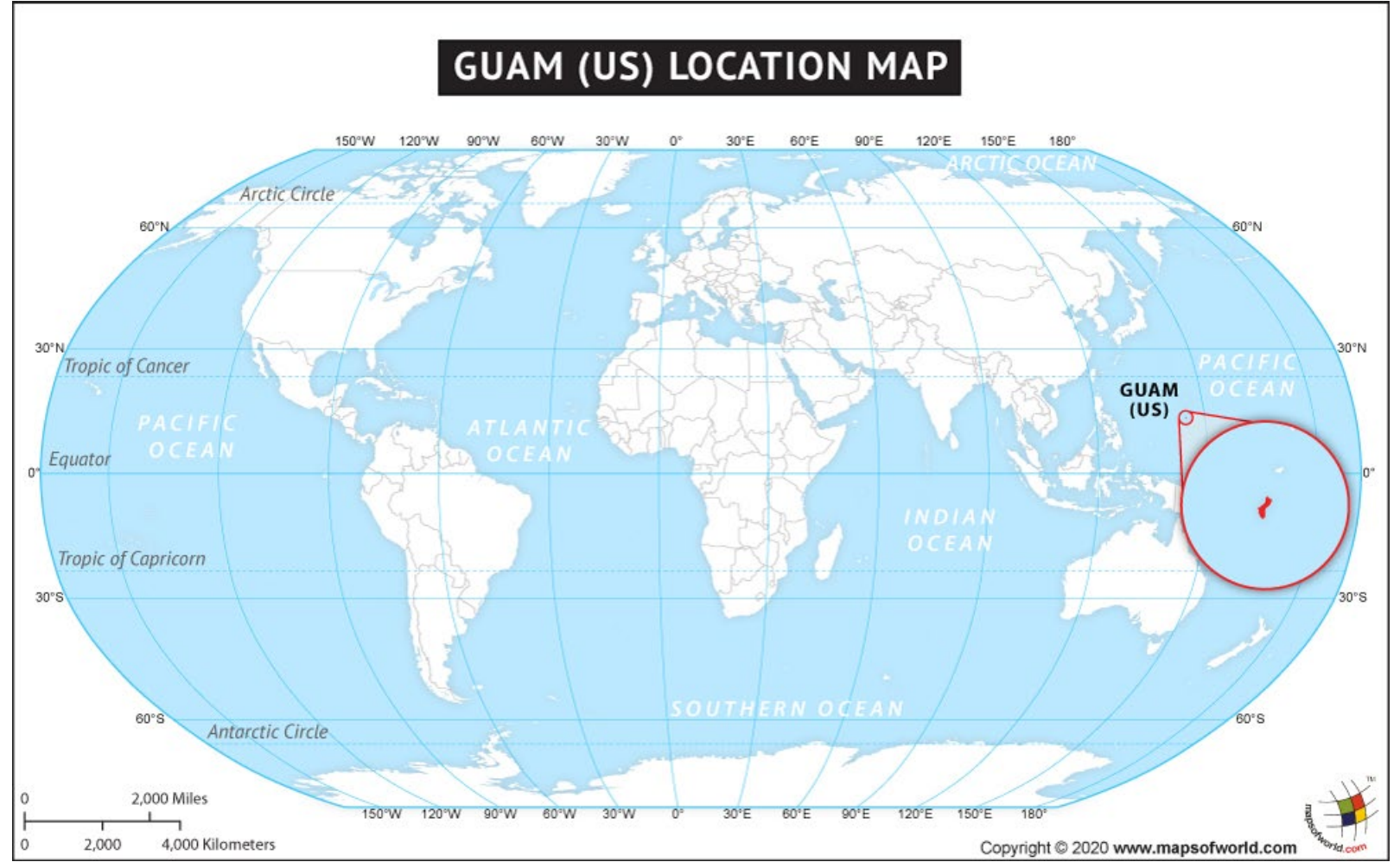
Something you might not know about me:

- I am a native of the Island of Guam
- I left the island as a baby of 18 months old
- Guam lies 5,800 miles west of San Francisco and 1,600 miles east of Manila, Phillipines
- It has been a U.S. territory since 1898 (residents are U.S. citizens)
- It has a history of being subject to distant government control (Spain, USA, Japanese invasion of WWII)
- The USA has a strong military presence on the island



Utah is a long way from Guam

But Utah has been my home since I was twelve years old



I love **Utah.**





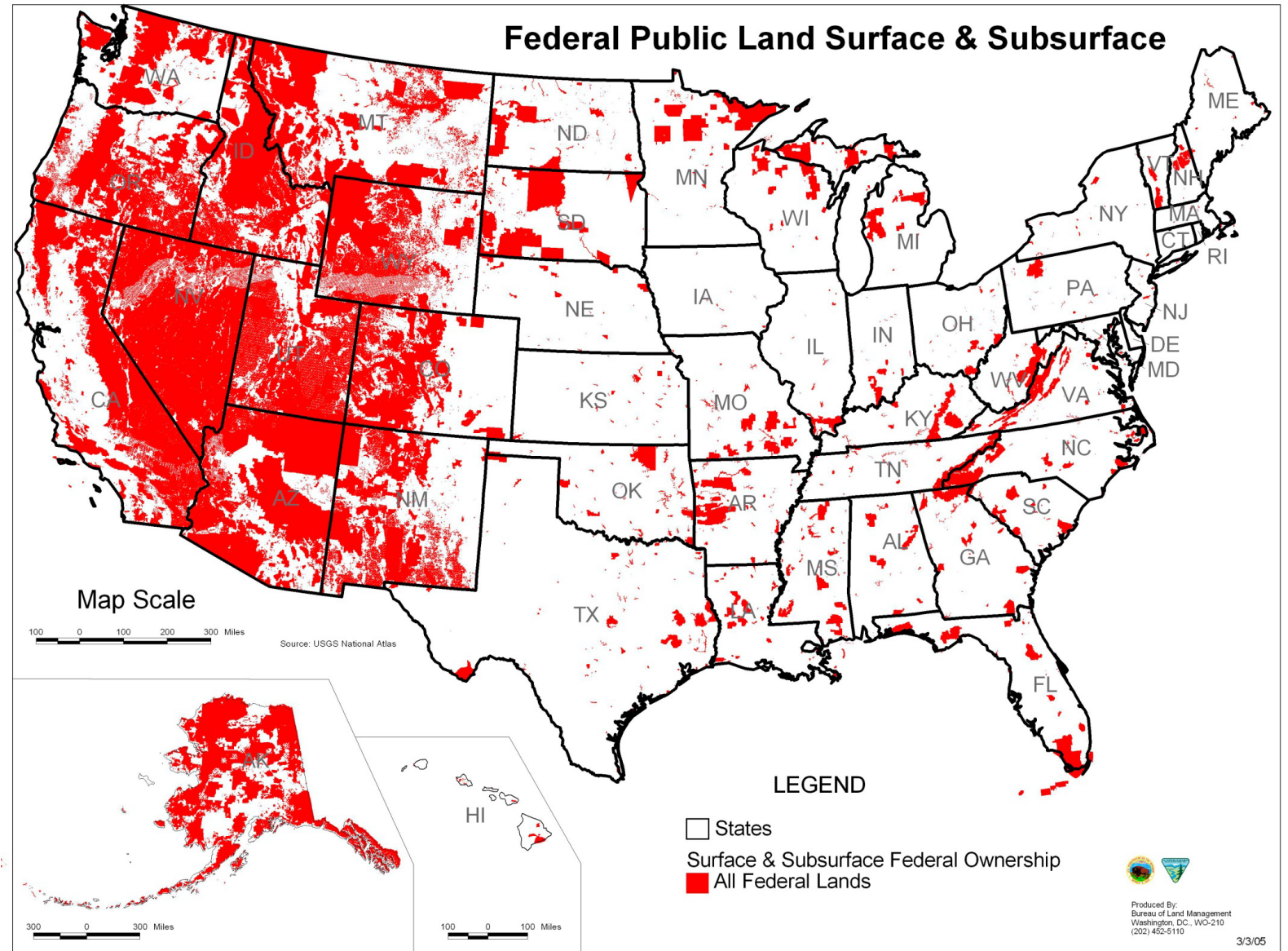






Federal lands create an overlay of control and limitation that are not endured in many other areas of the U.S.

- Rural communities feel shortchanged economically
- Out-migration of young people
- Policy dictated by overseers who are distant from the land
- Analogous to the Island of Guam?



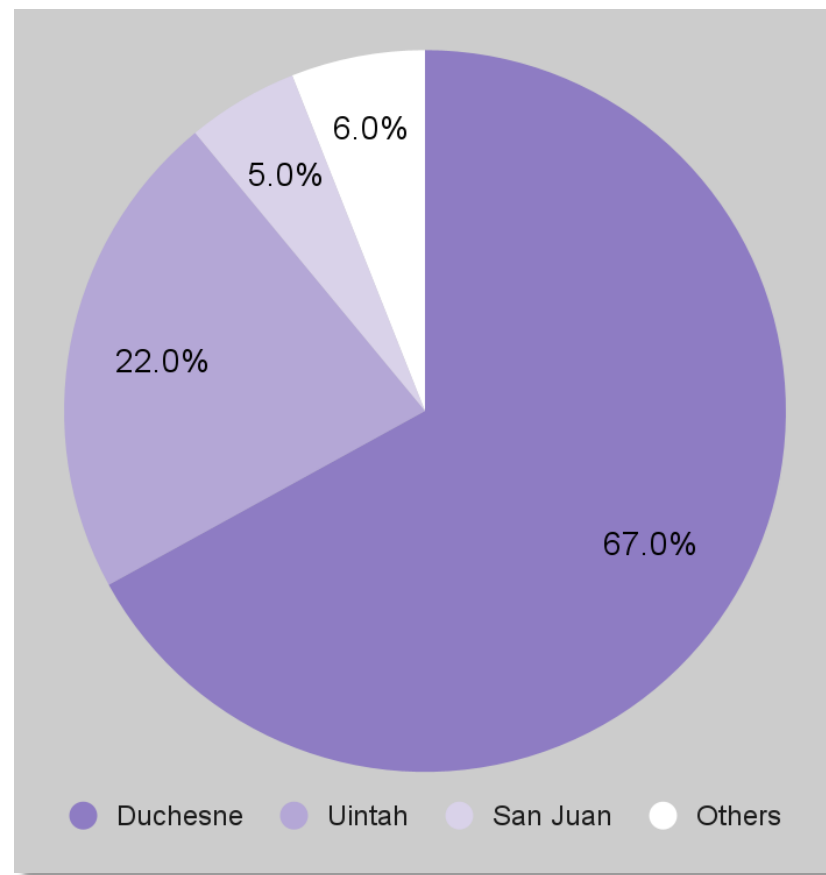
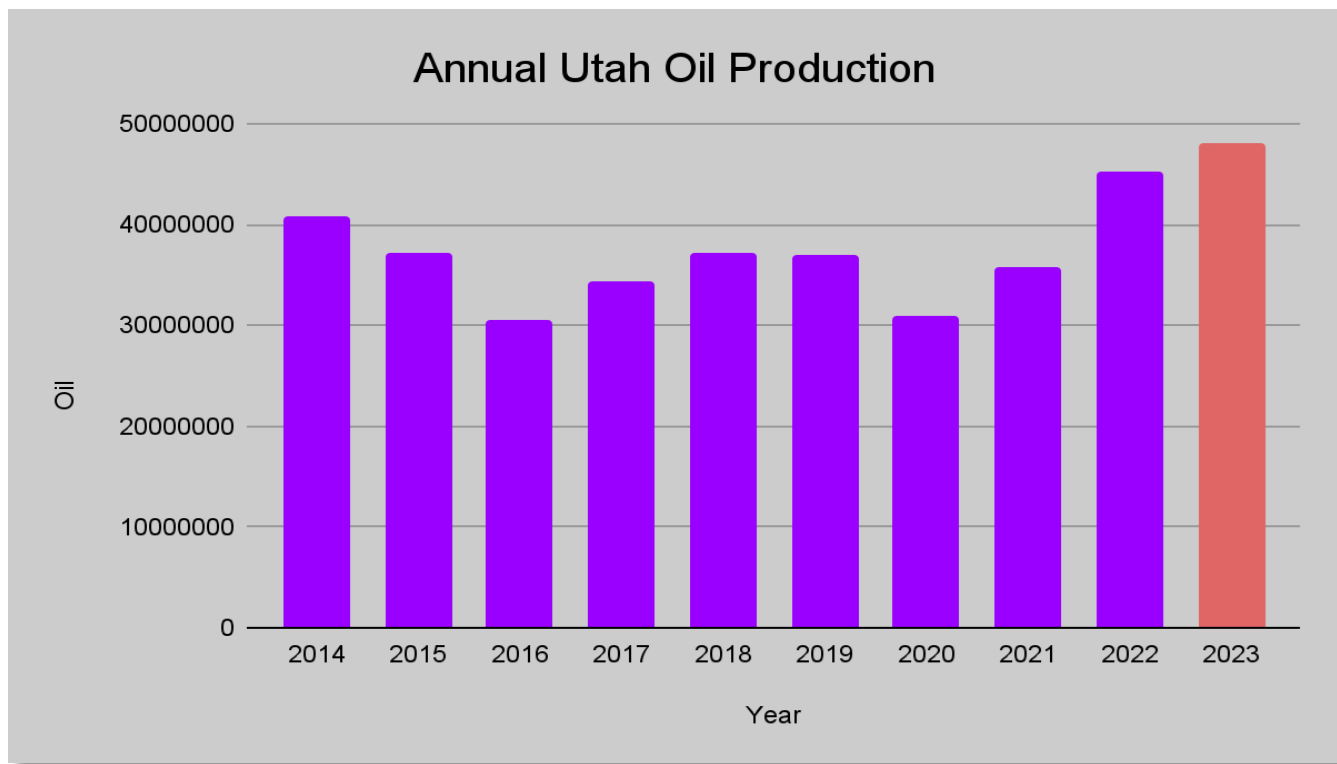
U.S. DOI – BLM Public Land Statistics 2022

State	Land Total (mil. acres)	Fed. Mineral %
NV	70.8	85.2
ID	53.5	69.1
UT	54.3	66.7
WY	62.6	65.7
OR	63.0	53.8
AK	426.1	51.2
CA	104.8	48.6
AZ	73.0	46.0
NM	77.8	46.1
CO	66.6	44.1

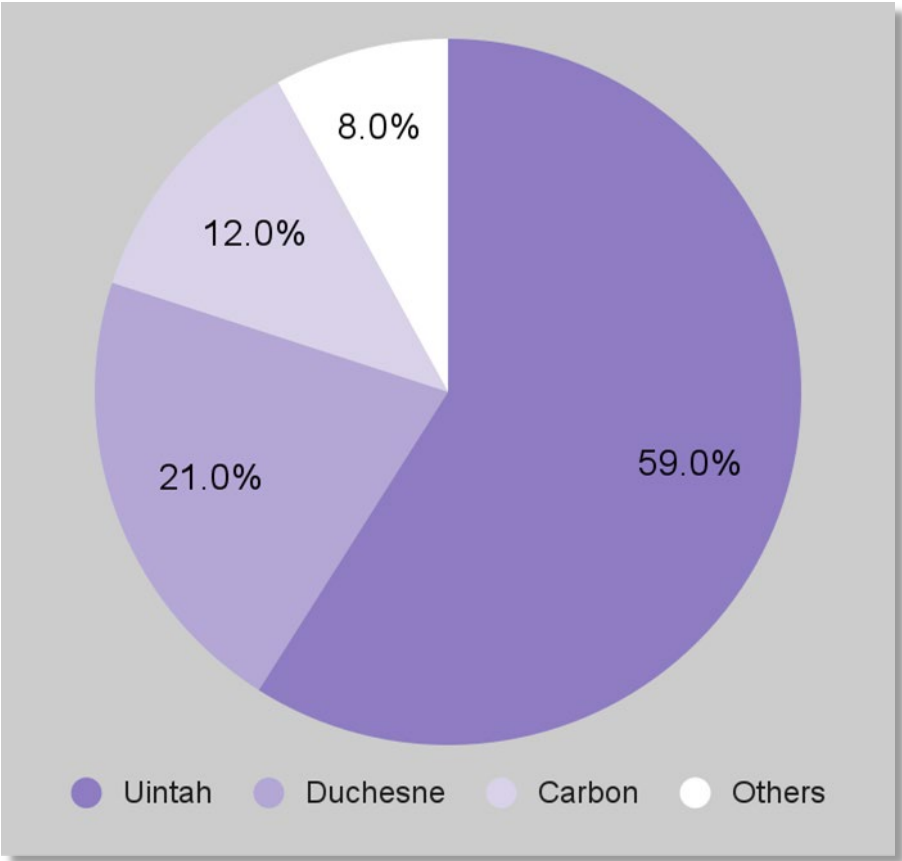
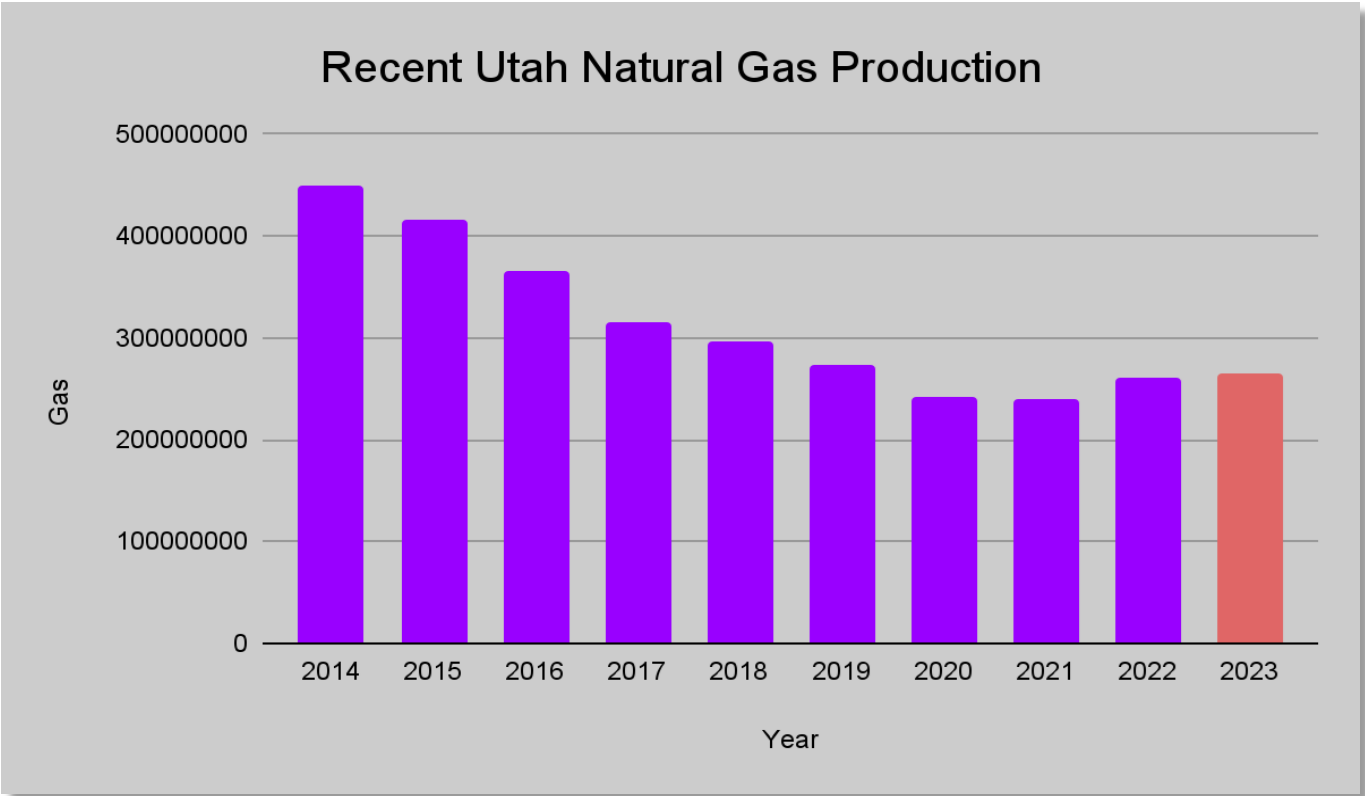
Other public land states with lesser percentages of federal minerals listed in Table 1-3 of Public Land Statistics (publication of U.S. Dept. of Interior): HI, KS, MT, NE, ND, OK, SD, TX, and WA



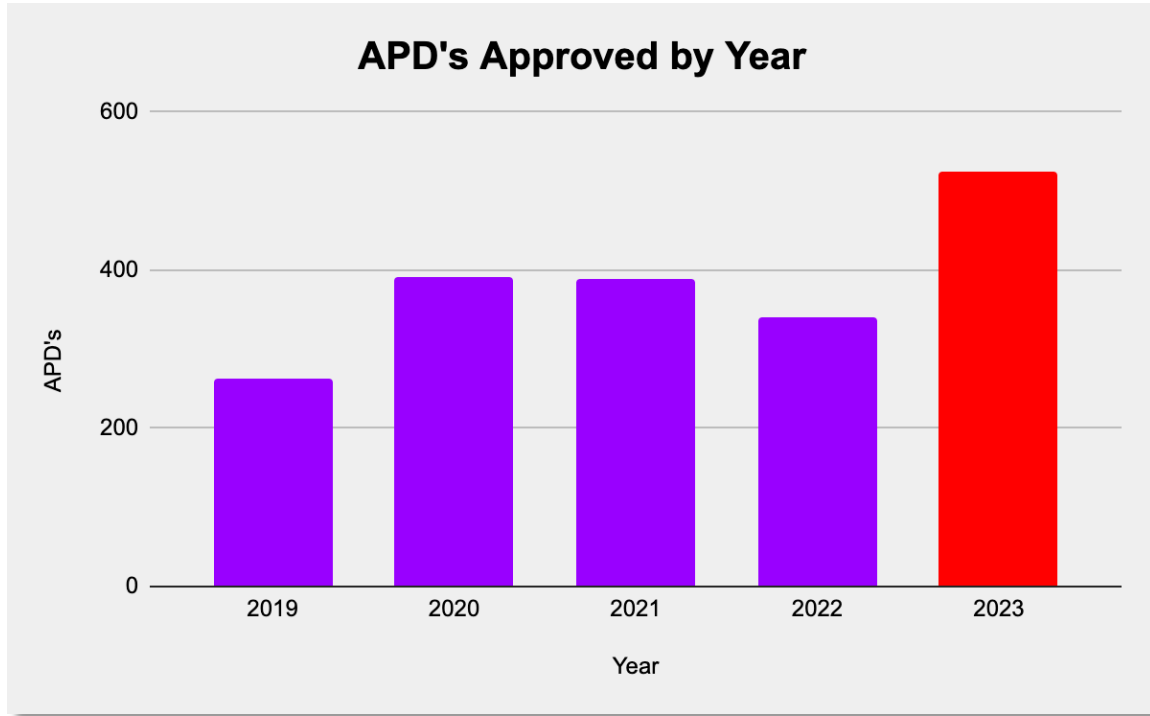
Oil Production



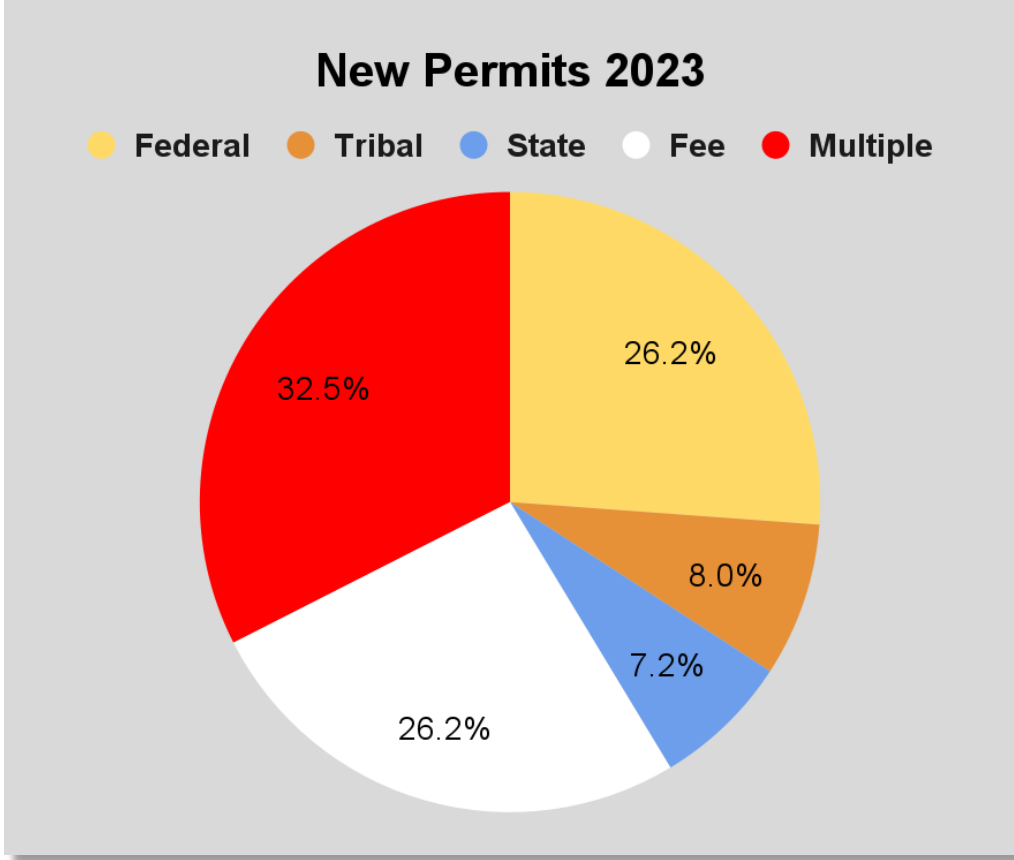
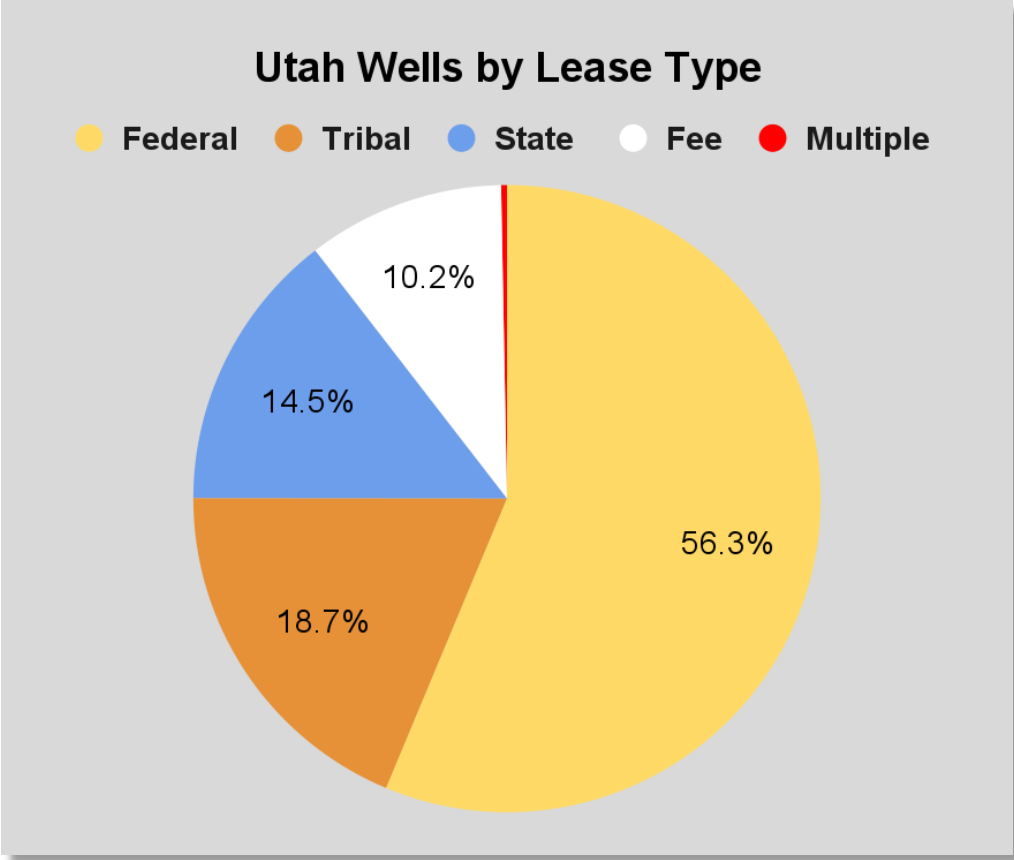
Natural Gas Production



OGM Drilling Permits



Wells by Lease Type

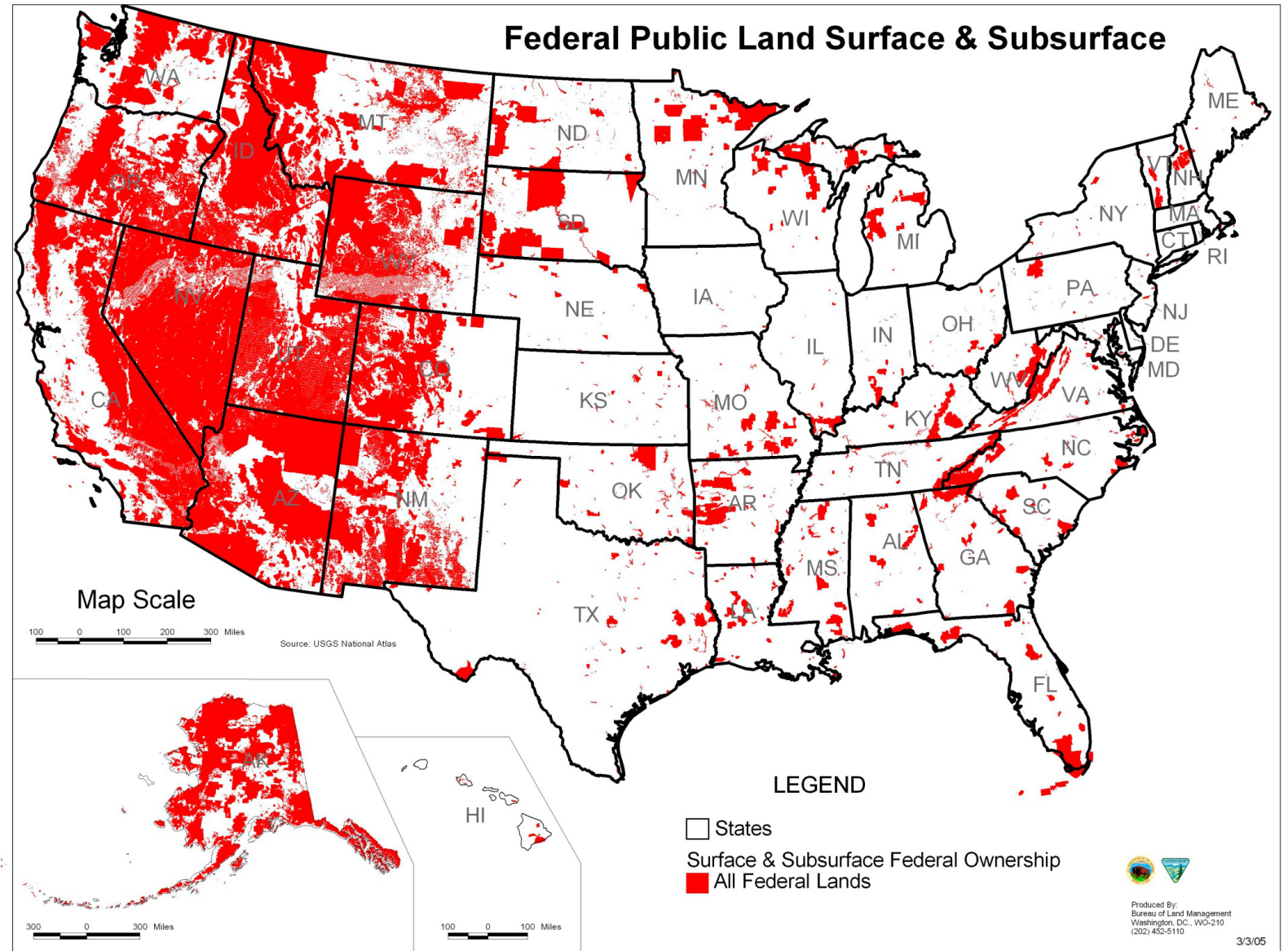


Energy and Minerals Production Value 2023

- Crude Oil = \$3.6 billion
- Natural Gas = \$1.8 billion
- Coal = \$495 million
- Metals and Industrial Minerals = \$4.1 billion
- Total = \$9.995 billion



Can we replicate the success that we are having in Utah in other public land states?







Thank you.

Utah Division of Oil, Gas & Mining
ogm.utah.gov

1594 W North Temple
Suite 1210
Salt Lake City, UT 84114-6201
(801) 538-5340

