

Innovative Solutions in Reclamation Monitoring

By: Kelsey Singleton, Environmental Manager



Industry Challenges

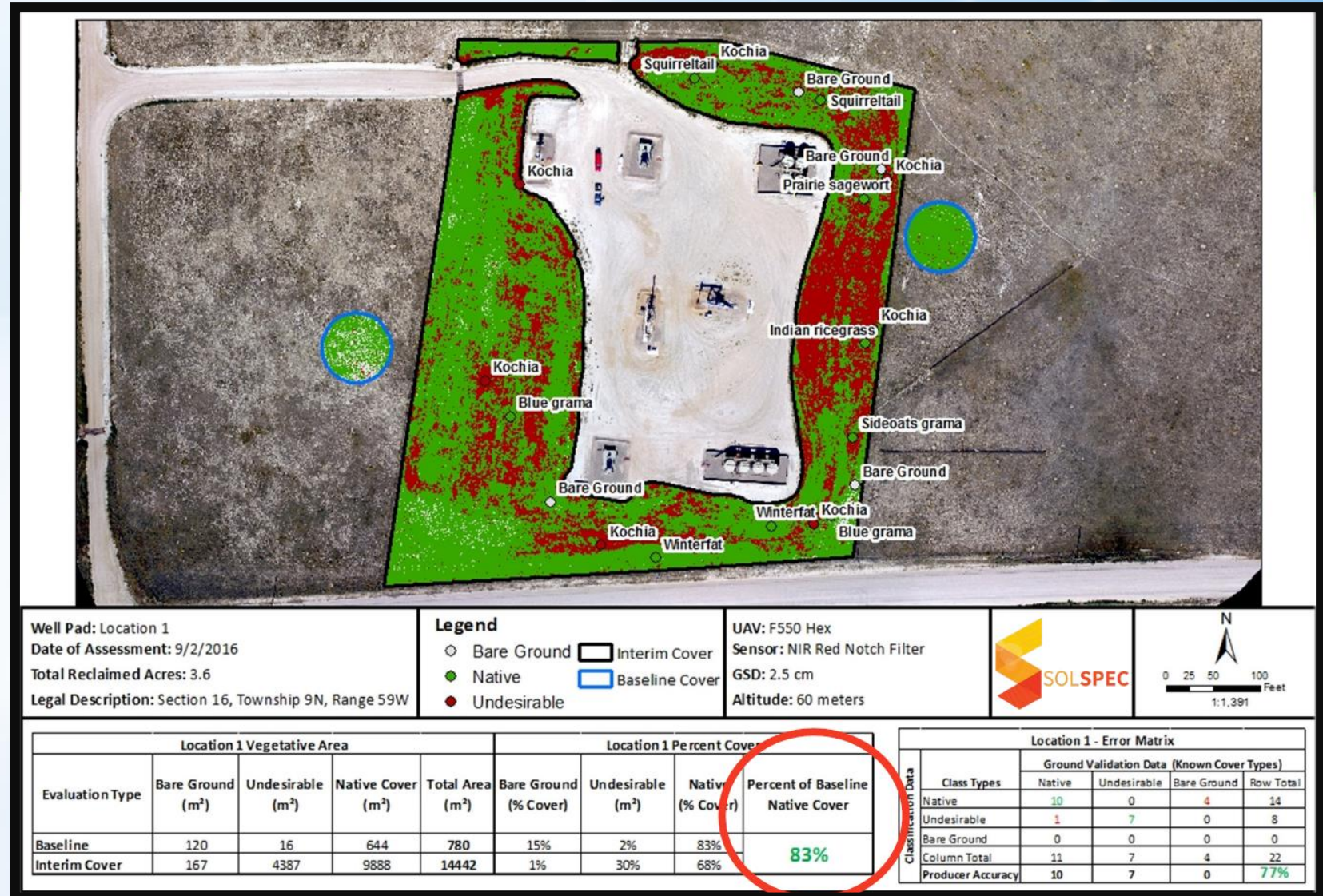
- We are all after the same goal: permit release and project closeout
- Platform inconsistencies
- Many different inspectors with varied regulatory/inspection/environmental expertise
 - = many different opinions
- As volume increases
 - Bottlenecks are created
 - Back-log frustration
 - Data becomes hard to manage

The History

2016 (9 yrs. ago)

We began developing analytics using remotely sensed data

- Goals
 - Factual, Unbiased Data
 - Ground truth to improve
 - Accurate & Repeatable
 - Consistency
 - Common Platform
- Reliable Desktop Inspection

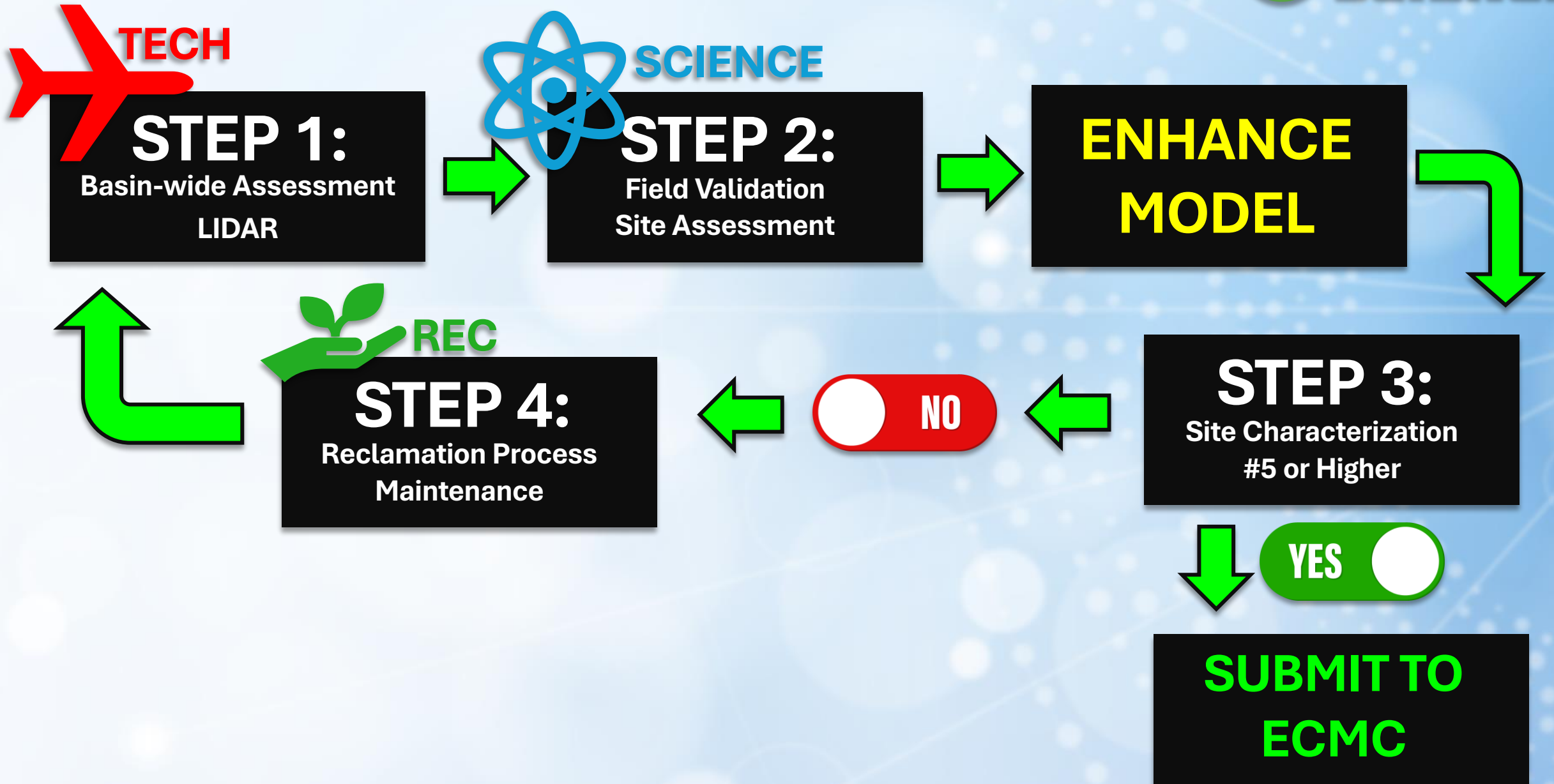




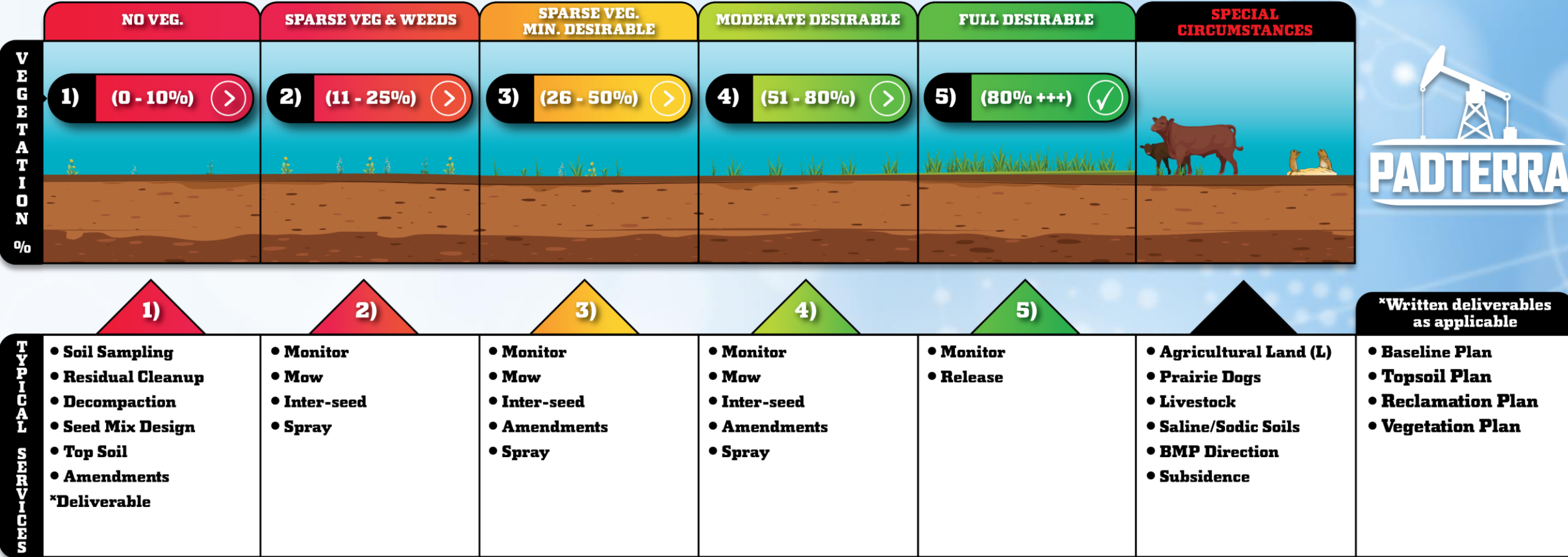
REC-TECH SCIENCE™



How We did it

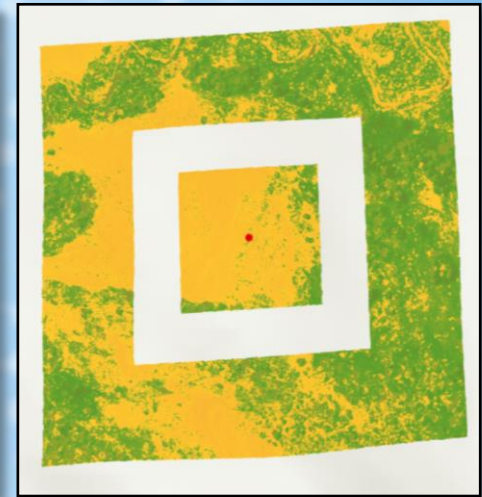
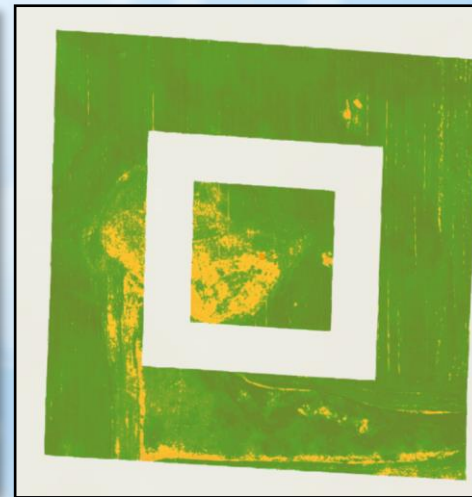
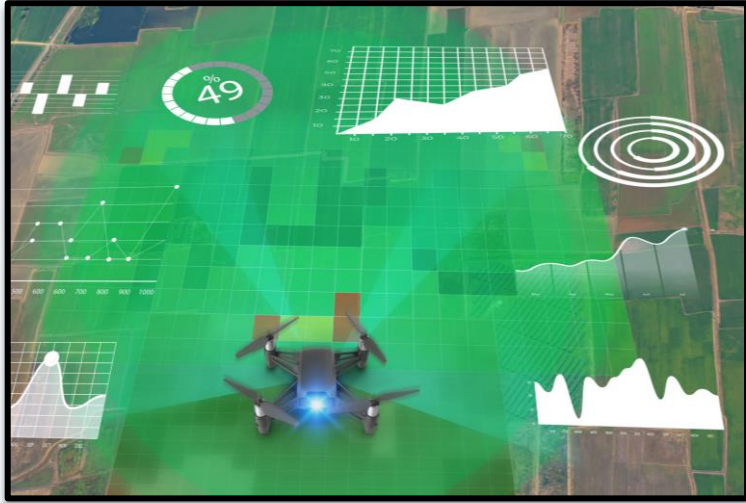


PadTerra Scale

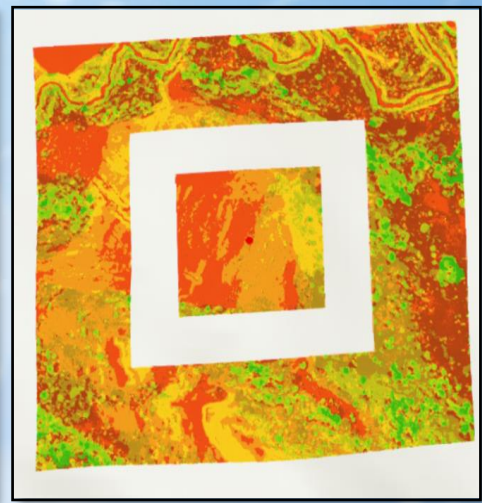
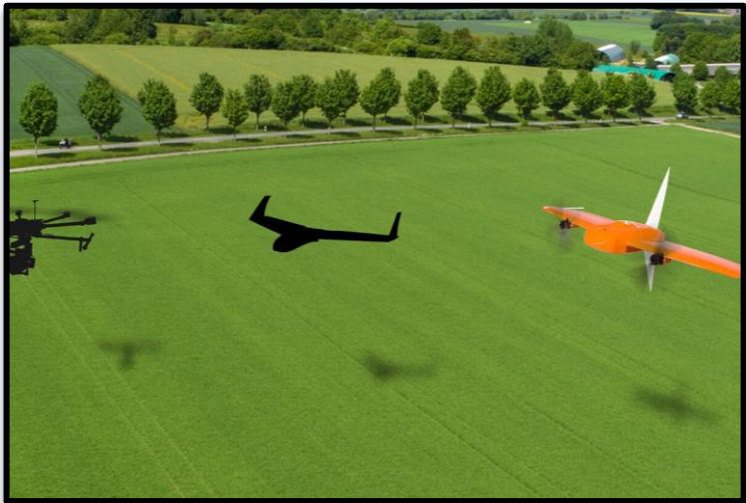


PadTerra Vegetation Assessment

THEN: RGB Near Infrared Photogrammetry



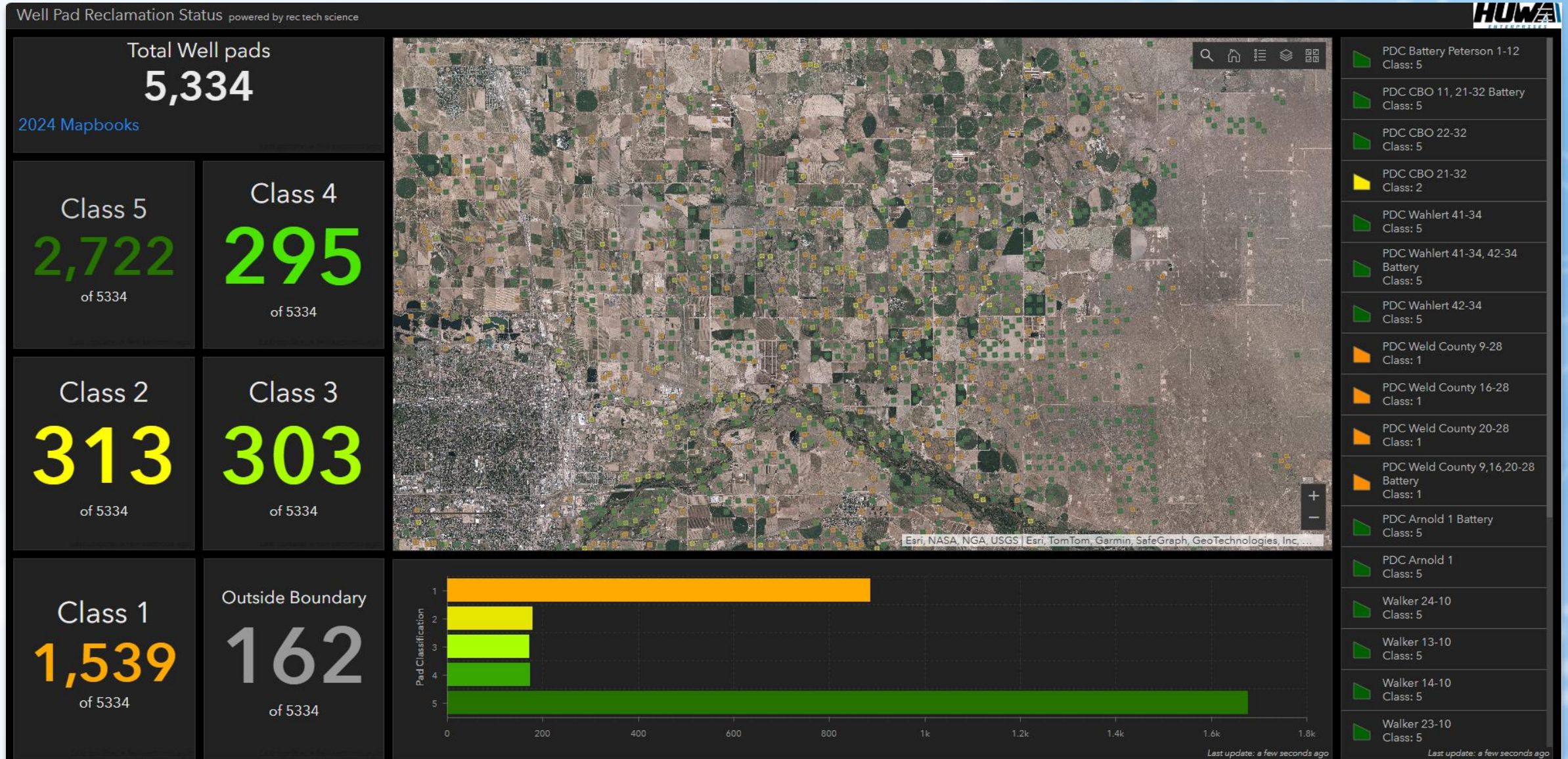
NOW: 4 Band/Multispectral + LiDAR



Technology

- Flight image
- Unbiased data

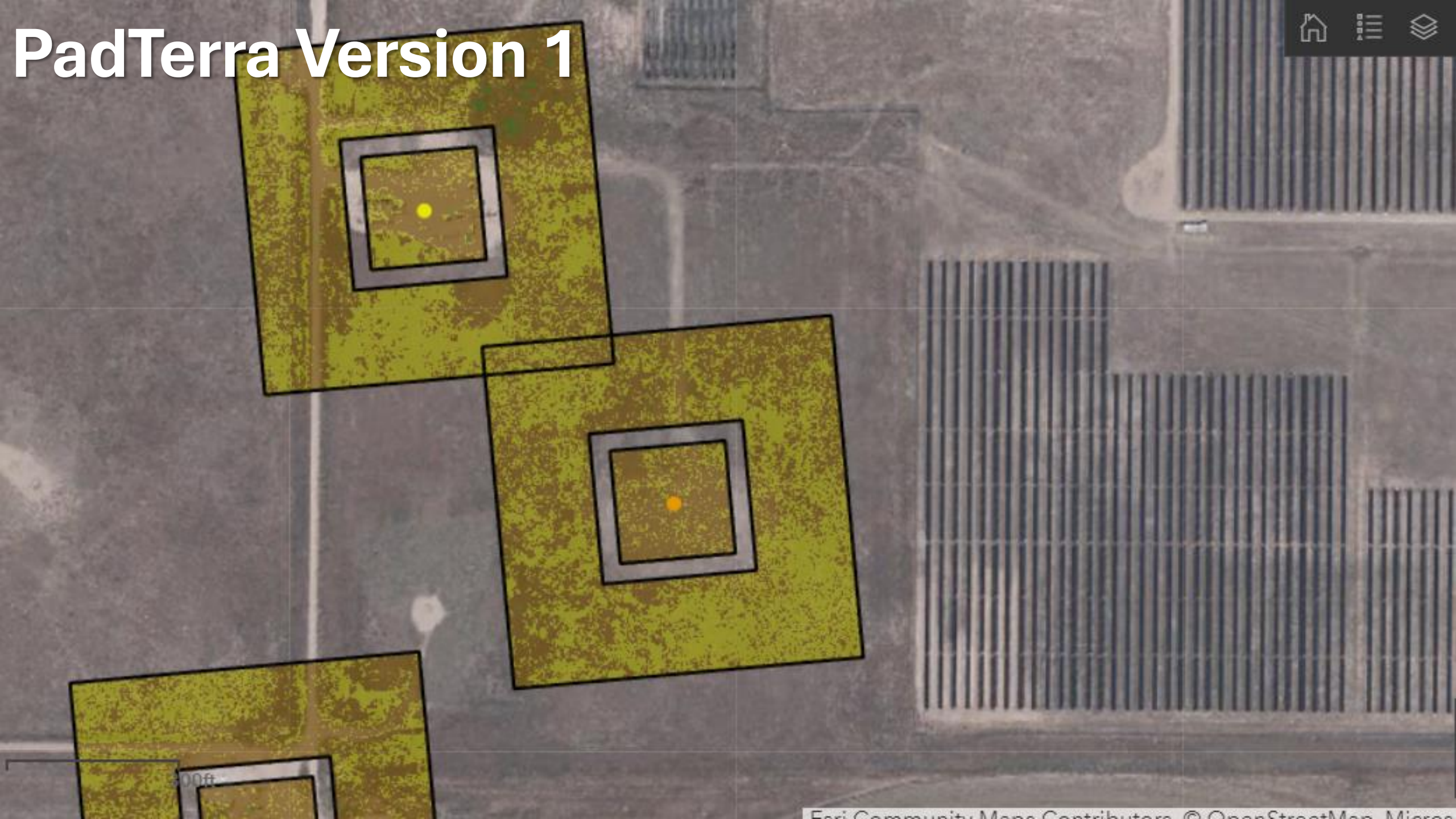
- Backlog creation
- Efficiencies



Successes to date

- Found 4100 duplicated well sites in backlog
- Developed version of pad distinction
- Flew 700,000 acs in 2024, doubling in 2025
- Increased Form 4 submittals from a few to several hundred
- Building common platform (field visits with Chevron, ECMC, us = never been done before for proactive measures)
- Safety
- ESG aspects

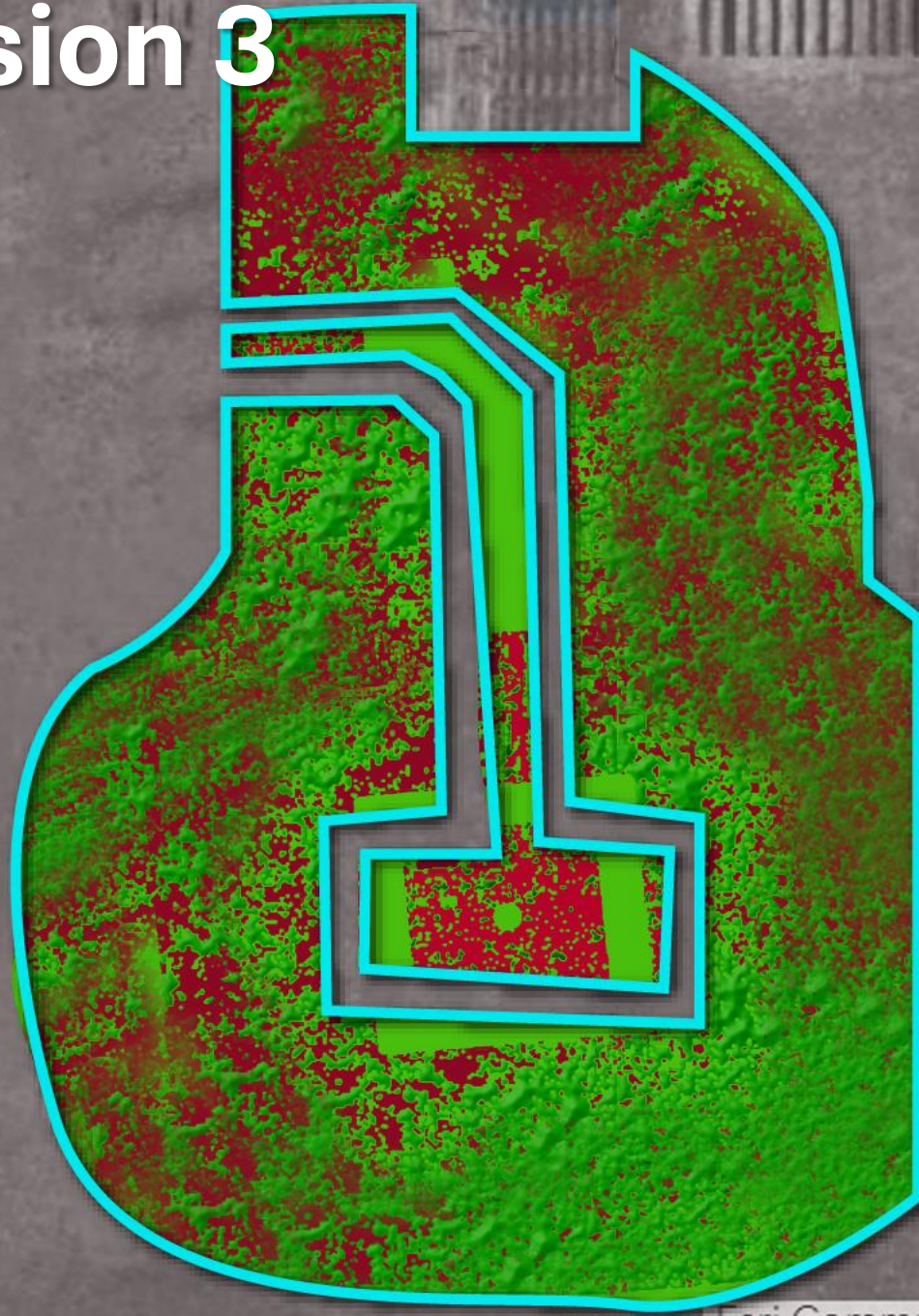
PadTerra Version 1



PadTerra Version 2



PadTerra Version 3



Futuristic Outlook

- Continue training the model with regulation and operator input
- Collect more data

Thank you!

- Kelsey Singleton: ksingleton@h-2e.com

Where I grind!

