

Motorcyclists in Crashes

- Motorcyclists in Crashes
 - Motorcyclists in crashes by county and injury severity.....pp. 63-64
 - Motorcyclist fatalities, 10-year trend..... p. 64
 - Motorcyclists in crashes by highway class and injury severity.....p. 65
 - Motorcyclists in crashes by month, day, and time.....p. 66
 - Motorcyclists in crashes by age, position, and gender..... p. 67
 - Motorcyclists in crashes by age and injury severity..... p. 68
 - Contributing factors by motorcycle operators in crashes..... p. 69
 - Motorcyclists in urban crashes by city and injury severity..... p. 70-71
 - Motorcyclists in crashes by position, injury severity, and helmet use.... p. 72
 - Helmet use among motorcyclist fatalities..... p. 73
- Motorcycle Involved Crashes
 - Motorcycle involved crashes by number of vehicles involved.....p. 74

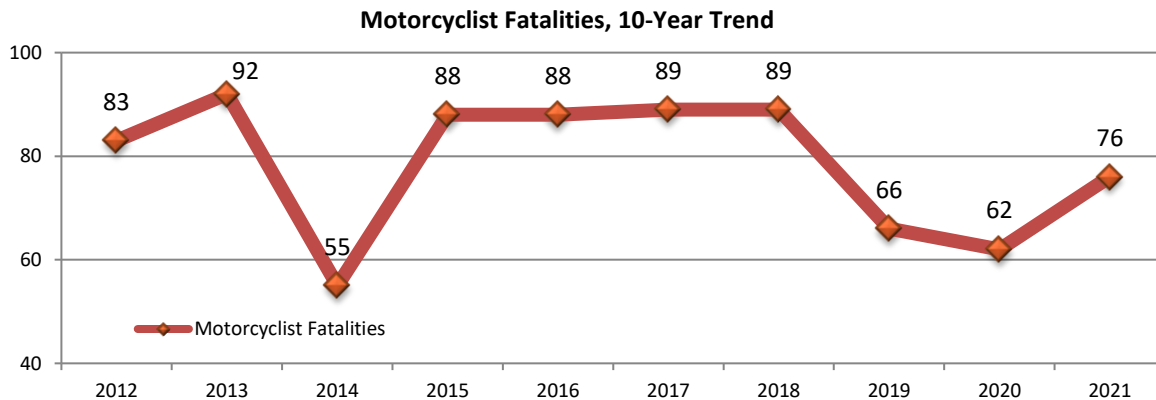
MOTORCYCLISTS IN CRASHES

Motorcyclists in Statewide Crashes County & Motorcyclist Injury Severity													
County	Person Injury Severity												Total Persons
	Fatal		Serious		Minor		Possible		None		Unknown		
	OHP	Police	OHP	Police	OHP	Police	OHP	Police	OHP	Police	OHP	Police	
Adair					1			1		1		1	4
Alfalfa	1		1		2				1		1		6
Atoka					2			1					3
Beaver									1				1
Beckham				2	2			2					6
Blaine								2					2
Bryan	2		4	3		3		1		1			14
Caddo		1	1										2
Canadian		1	1	10	4	13	1	11		4		3	48
Carter	1	1	1	2	1	1	1		2	4	1	1	16
Cherokee	1		3		5		1	1		1			12
Choctaw	1		2		3			1	1				8
Cimarron	1		2										3
Cleveland		3	1	16	1	14		18	1	5			59
Coal					2		1						3
Comanche		1	3	4	3	7	1	13				4	36
Cotton	1				1								2
Craig			2		2								4
Creek	1	1	2	1	6	2	5		1	1			20
Custer	1		2				1	1					5
Delaware	1	1	6	2	11	1	3	1	1	3	1		31
Dewey			1						1				2
Garfield			4	1	3	5		3	1	1			18
Garvin					1		1				2		4
Grady	1		2	3	2	2				1			11
Grant			1										1
Greer					1								1
Harmon			1										1
Harper					1								1
Haskell	1						1						2
Hughes			2		1								3
Jackson				1		1		1		1			4
Jefferson			1				1		1				3
Kay			1	2	1	3	3	4				1	15
Kingfisher	1				1			2					4
Latimer			1		1								2
LeFlore	1	1	1	1	12	3	2		1	1			23
Lincoln			1		3		2						6
Logan			2		6	3	6	1	1		1	1	21
Love					2		1			1			4
McClain	1		1	2	3	1	2	2		1			13
McCurtain	1		1		4		3	2	4				15
McIntosh			3	1	1			1	1				7
Major	1		2										3
Marshall			1				1		1				3

MOTORCYCLISTS IN CRASHES

Motorcyclists in Statewide Crashes County & Motorcyclist Injury Severity													
County	Person Injury Severity												Total Persons
	Fatal		Serious		Minor		Possible		None		Unknown		
	OHP	Police	OHP	Police	OHP	Police	OHP	Police	OHP	Police	OHP	Police	
Mayes	2	1	3	3	9	2	4	1	1				26
Murray					8	2	3						13
Muskogee	1			2	2	4							9
Noble			1		2				2				5
Okfuskee	1				2		1		1				5
Oklahoma	5	11	11	36	21	75	16	59	13	42	2	15	306
Okmulgee	2		3		1								6
Osage			4		9				1				14
Ottawa	2		4		3		1			1			11
Pawnee	1		1		2		1						5
Payne		1	1	5	4	4	2	2	1	2			22
Pittsburg			3	4	2	1		2		1			13
Pontotoc	2		3			1	1				2	1	10
Pottawatomie			4	10	4	10	7	2	4	1	1		43
Pushmataha	1				2								3
Rogers	1			4	9	9	4		1	2			30
Seminole	1	2	1		1		2	1	1				9
Sequoyah			2		5	1	7	4	2	2			23
Stephens			1		2	2		1					6
Texas						1	1						2
Tillman			1										1
Tulsa	3	9	4	43	22	60	6	29	2	31	3	13	225
Wagoner	1	1	2	4	1	3	1	4	1	5	1		24
Washington			2	2	1	5		3	1				14
Washita							2						2
Woods			1										1
Woodward			3			1			1				5
	41	35	112	164	201	240	96	177	51	113	15	40	1285
Total Persons	76		276		441		273		164		55		1285

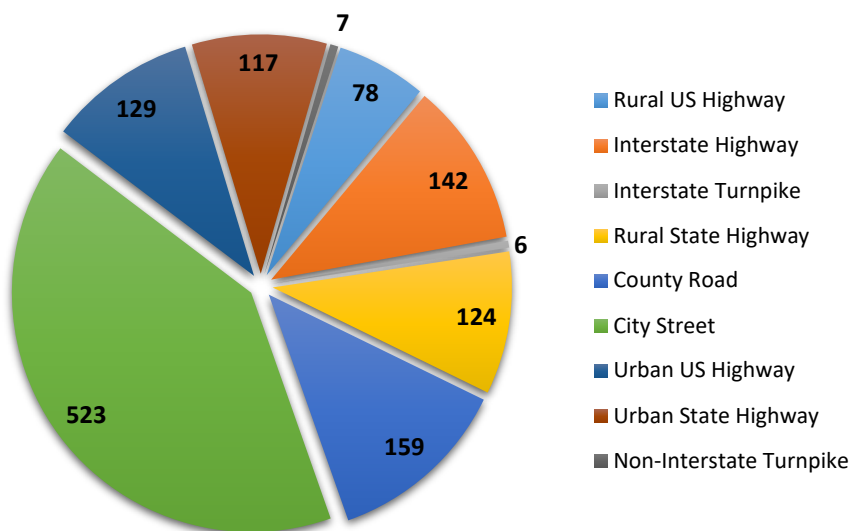
OHP indicates crashes worked by the Oklahoma Highway Patrol. These crashes are generally on rural roads and highways. Police indicates crashes worked by agencies (police, sheriff, campus police, etc.) other than the Oklahoma Highway Patrol. These crashes are generally worked within municipalities.
Unlisted counties had no motorcyclists in crashes.



MOTORCYCLISTS IN CRASHES

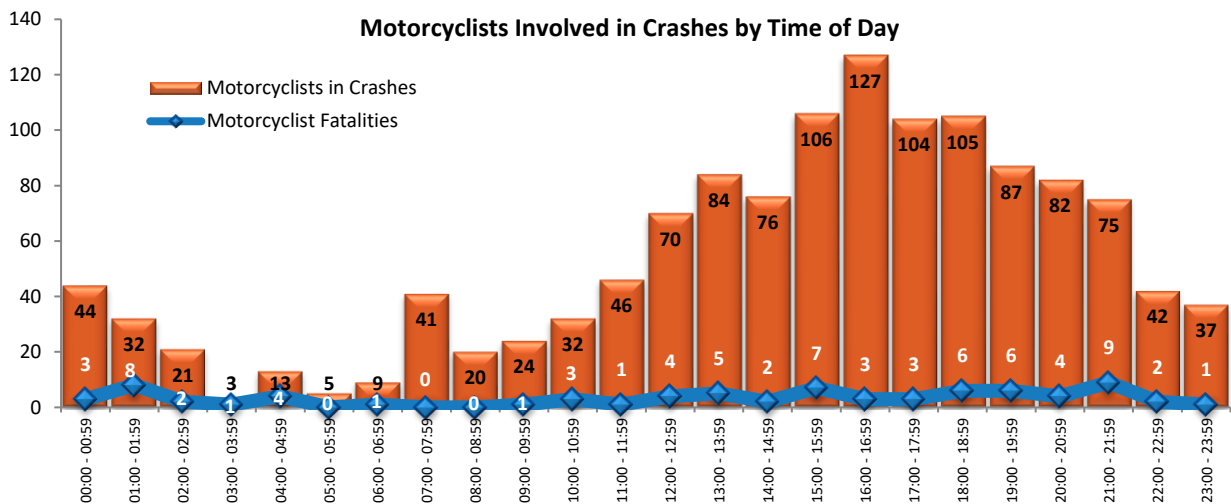
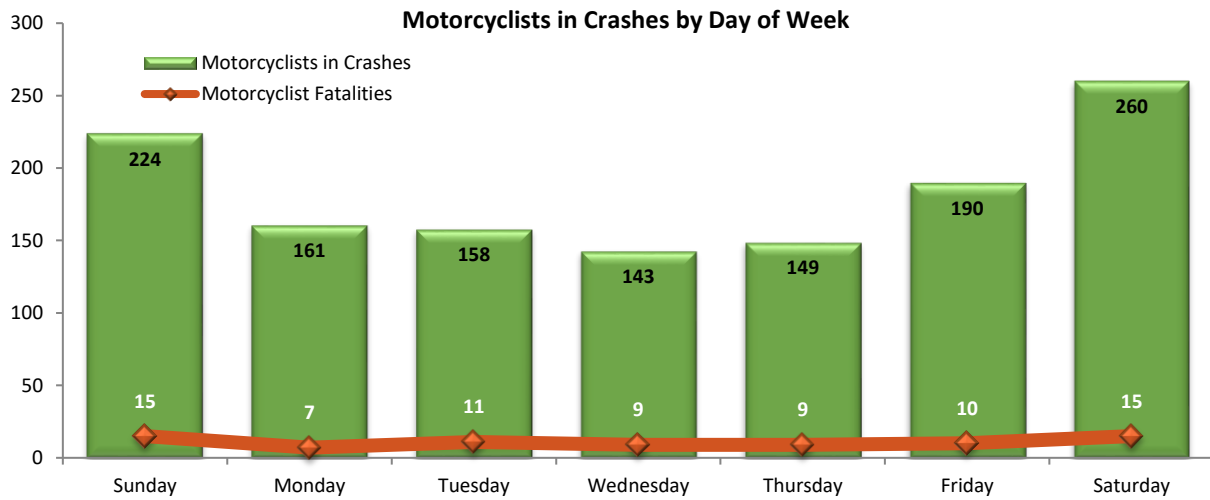
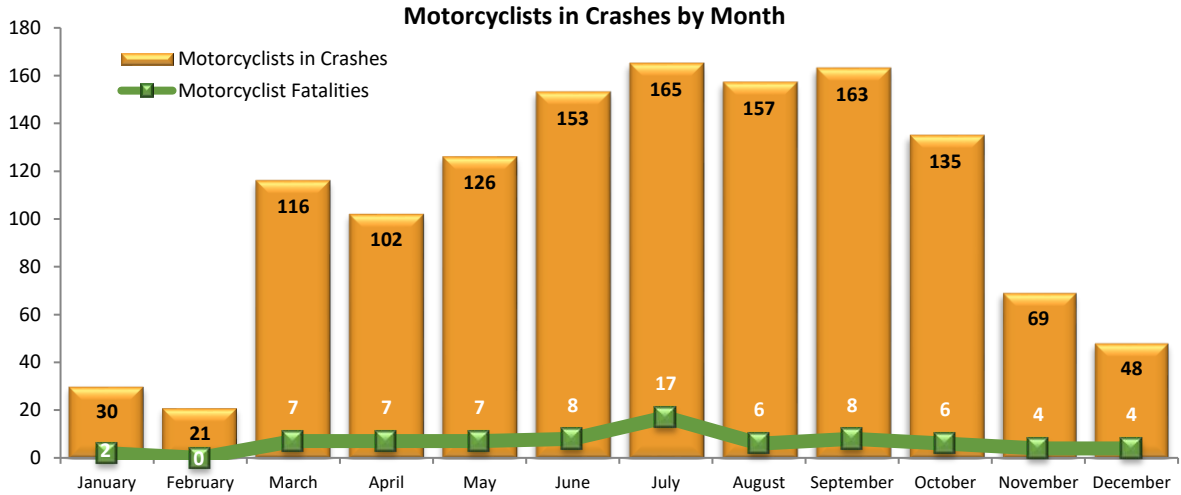
Motorcyclists in Crashes by Highway Class & Injury Severity							
Highway Class	Injury Severity						Total Motorcyclists
	Fatal	Serious	Minor	Possible	None	Unknown	
Rural US Highway	7	21	27	11	9	3	78
Interstate Highway	12	27	48	32	20	3	142
Interstate Turnpike	1		2	2	1		6
Rural State Highway	12	23	57	18	12	2	124
County Road	8	42	61	35	8	5	159
City Street	21	105	177	113	75	32	523
Urban US Highway	10	29	34	33	20	3	129
Urban State Highway	5	27	33	27	19	6	117
Non-Interstate Turnpike		2	2	2		1	7
Total	76	276	441	273	164	55	1285

Total Motorcyclists Involved in Crashes by Highway Class



Motorcyclists in Crashes by Crash Injury Severity & Number of Vehicles Involved						
Number of Vehicles	Injury Severity					Total Crashes
	Fatal	Serious	Minor	Possible	None	
One Vehicle	49	127	207	108	43	534
Two Vehicles	40	160	206	148	132	686
Three Vehicles	2	6	29	14	5	56
Four or More Vehicles		4	4		1	9
Total	91	297	446	270	181	1285

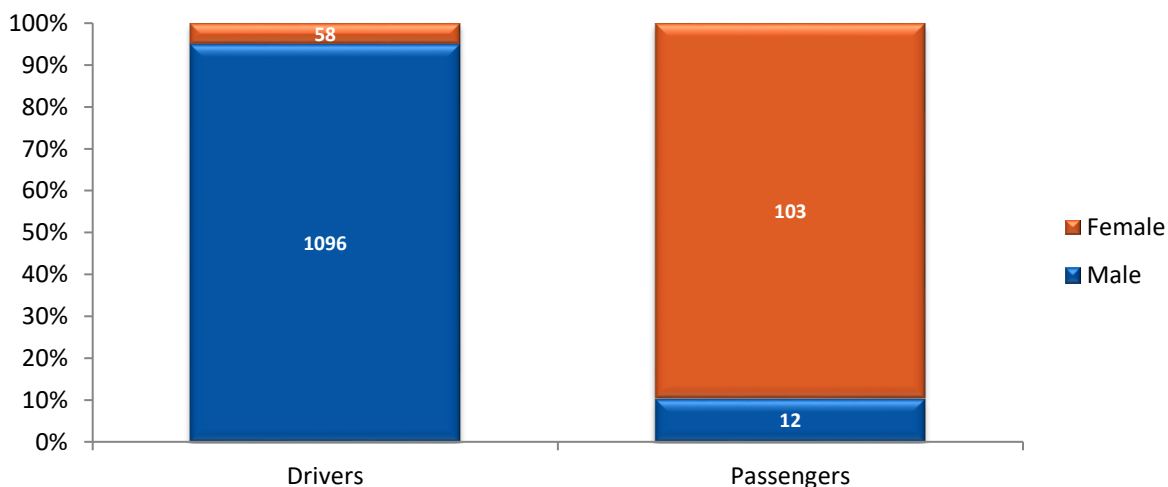
MOTORCYCLISTS IN CRASHES



MOTORCYCLISTS IN CRASHES

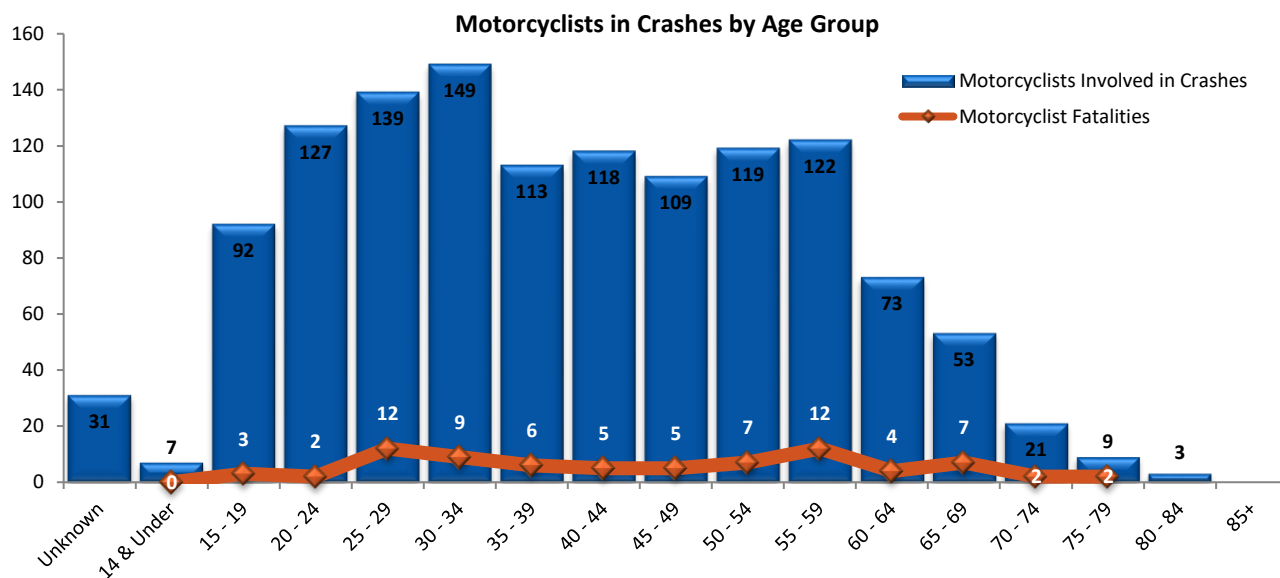
Motorcyclists in Crashes by Age, Position, and Gender									
Age Group	Driver			Passenger			Total		
	Unknown	Female	Male	Unknown	Female	Male	Unknown	Female	Male
Unknown	16		11		3	1	16	3	12
7					1			1	
8						1			1
11						1			1
12						1			1
13			1		1			1	1
14		1						1	
15		2	7		1	1		3	8
16			13						13
17		1	13			1		1	14
18			19		2			2	19
19		1	29		2			3	29
20 - 24		6	114		7			13	114
25 - 29		3	126		10			13	126
30 - 34		9	122		16	2		25	124
35 - 39		6	95		10	2		16	97
40 - 44		6	102		10			16	102
45 - 49		8	95		4	1		12	97
50 - 54		4	99		16			20	99
55 - 59		6	108		8			14	108
60 - 64		4	62		7			11	62
65 - 69		1	49		3			4	49
70 - 74			19		2			2	19
75 - 79			9						9
80 - 84			3						3
85+									
Total Persons	16	58	1096	0	103	12	16	161	1108
	1170			115			1285		

Motorcyclists in Crashes by Position and Gender



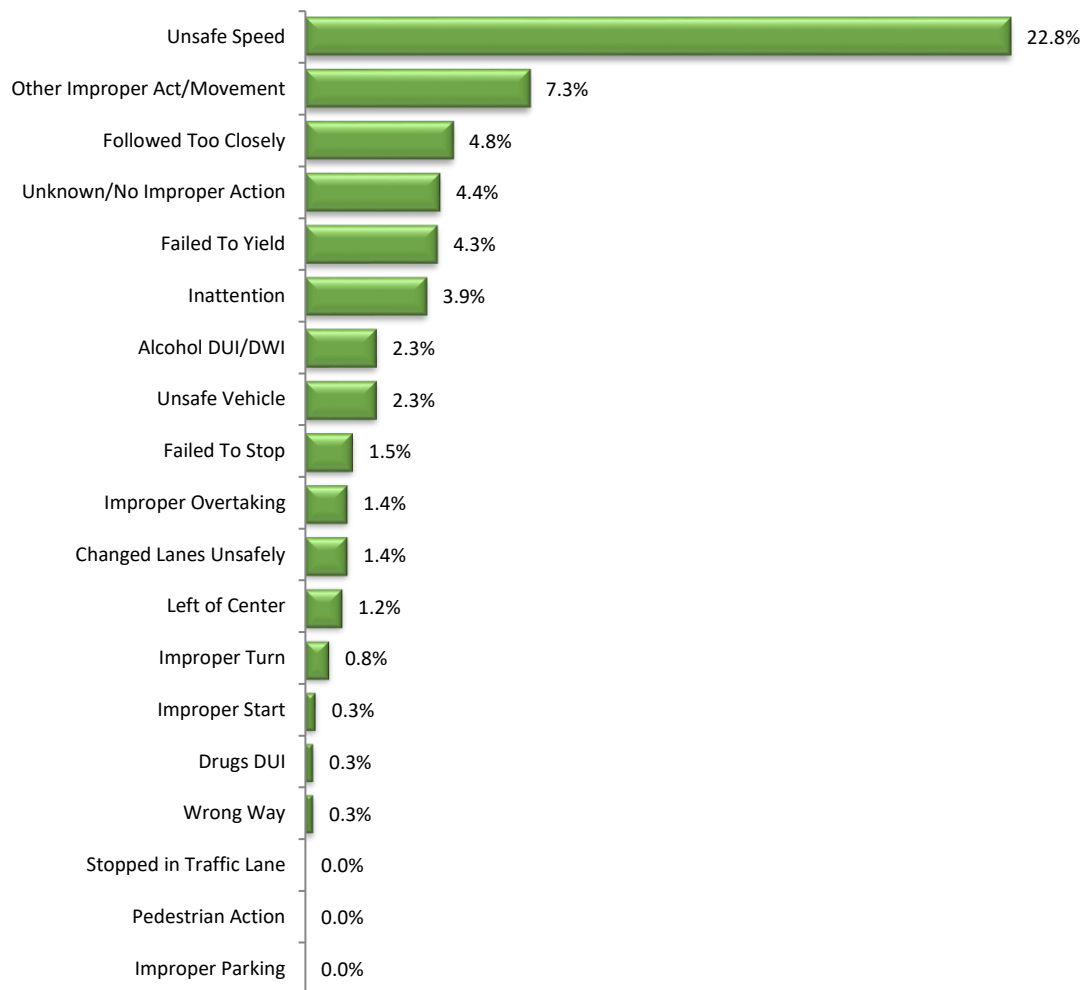
MOTORCYCLISTS IN CRASHES

Motorcyclists in Crashes by Age & Injury Severity							
Age	Motorcyclist Injury Severity						Total
	Fatal	Serious	Minor	Possible	None	Unknown	
Unknown			3	2	3	23	31
7			1				1
8					1		1
11				1			1
12		1					1
13			1	1			2
14		1					1
15		2	5	1	3		11
16	1	1	2	5	4		13
17		2	5	5	2	1	15
18		2	12	5	2		21
19	2	6	17	4	3		32
20 - 24	2	28	47	31	14	5	127
25 - 29	12	25	39	43	17	3	139
30 - 34	9	33	57	26	16	8	149
35 - 39	6	33	33	19	19	3	113
40 - 44	5	30	39	25	17	2	118
45 - 49	5	23	43	19	18	1	109
50 - 54	7	23	47	21	18	3	119
55 - 59	12	20	44	32	12	2	122
60 - 64	4	23	18	19	5	4	73
65 - 69	7	12	23	6	5		53
70 - 74	2	7	3	5	4		21
75 - 79	2	2	2	3			9
80 - 84		2			1		3
85+							
Total	76	276	441	273	164	55	1285



MOTORCYCLISTS IN CRASHES

Motorcycle Driver Contributing Factor in Crashes*



* The above results do not include the factor labeled “No Improper Action by Driver.” On the current Oklahoma crash report form, every driver in a crash is assigned a contributing factor for the crash. If a driver is not at fault, “No Improper Action by Driver” is selected. In all crashes, this factor was assigned to 40.8% of motorcycle drivers. “Other Improper Act/Movement” includes failure to signal, disregarding warning signal, improper lane use, improper backing, sleepy driver, failure to secure load, and unknown/other movements.

MOTORCYCLISTS IN CRASHES

Motorcyclists in Urban Crashes by City (5000+ pop.) & Injury Severity							
City	Person Injury Severity						Total
	Fatal	Serious	Minor	Possible	None	Unknown	
Ada			1			1	2
Altus		1	1	1	1		4
Anadarko	1						1
Ardmore	1	2	1		5	1	10
Bartlesville		2	5	3			10
Bethany			2				2
Bixby		1		1	3		5
Blackwell						1	1
Broken Arrow	2	9	13	3	3		30
Catoosa		1	3	1			5
Chickasha		2			1		3
Choctaw				2			2
Claremore		3	6		2		11
Clinton	1			2			3
Collinsville	1						1
Coweta			2	2	2		6
Del City	1	2	3	1	2		9
Duncan			2				2
Durant		2	2	1	1		6
Edmond		4	6	4	3	1	18
El Reno			4	3	1		8
Elk City		2		2			4
Enid		1	5	3	1		10
Glenpool					1		1
Grove	1	1	1		3		6
Guthrie		1	3	2			6
Guymon			1				1
Harrah					1		1
Hugo				1			1
Idabel				2			2
Lawton	1	4	7	13		4	29
McAlester		4	1	1	1		7
Miami					1		1
Midwest City	1	7	4	4	5	1	22
Moore	1	3	6	5	1		16
Muskogee		2	4				6
Mustang		3	2		1		6
Newcastle		2	1	2	1		6
Noble		1	1				2
Norman	2	8	8	5	3		26
Oklahoma City	15	43	86	76	47	16	283
Owasso		2	2	1	2	1	8
Pauls Valley						1	1
Ponca City		2	3	4			9
Poteau			2		1		3
Pryor	1	3	1	1			6

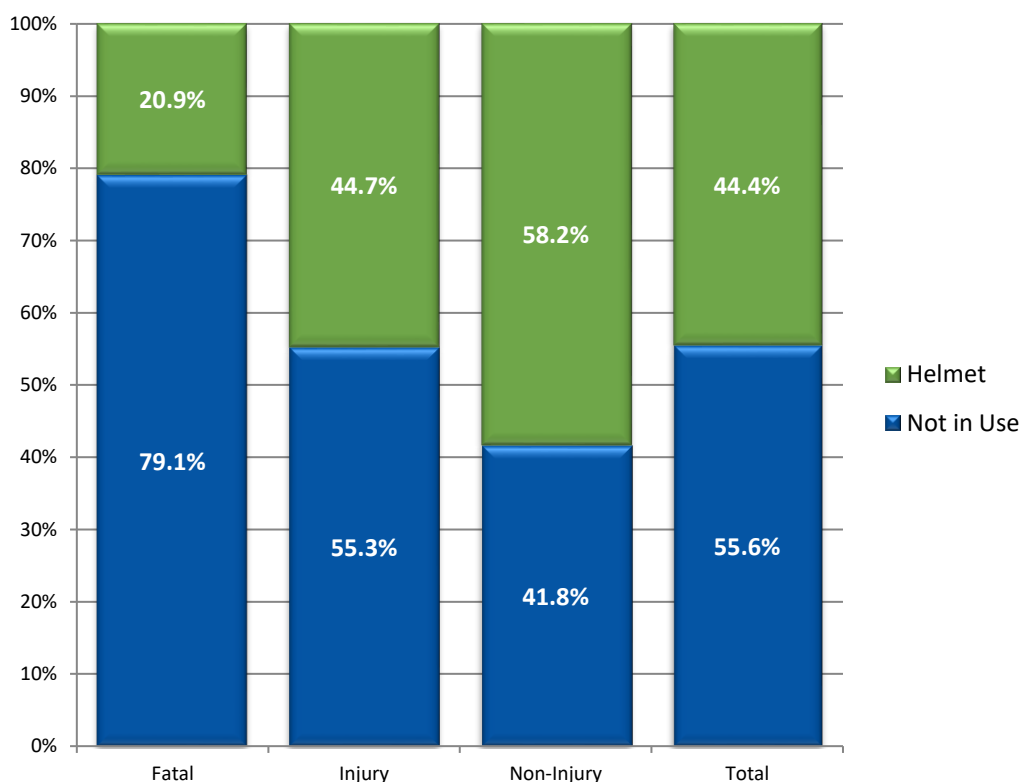
MOTORCYCLISTS IN CRASHES

Motorcyclists in Urban Crashes by City (5000+ pop.) & Injury Severity							
City	Person Injury Severity						Total
	Fatal	Serious	Minor	Possible	None	Unknown	
Sallisaw				3	1		4
Sand Springs			1	1	3		5
Sapulpa	1	1	2	1	2		7
Seminole	2			1			3
Shawnee		9	9	2	2		22
Skiatook		1					1
Stillwater	1	5	5	3	2		16
Tahlequah				1	1		2
Tecumseh		2	1				3
Tulsa	10	35	61	25	20	14	165
Tuttle		1	1				2
Wagoner				2	1		3
Warr Acres			1	2		1	4
Woodward			1				1
Yukon		3	1	2	1		7
Total	43	175	272	189	126	42	847

MOTORCYCLISTS IN CRASHES

Motorcyclists in Crashes Position, Helmet Use, and Injury Severity								
Position	Helmet Use	Person Injury Severity						Total
		Fatal	Serious	Minor	Possible	None	Unknown	
Driver	Not in Use	49	113	155	79	36	7	439
	Helmet	13	72	129	81	48	7	350
	Unknown	9	56	118	94	65	39	381
Passenger	Not in Use	4	15	14	10	2	0	45
	Helmet	1	12	14	4	5	1	37
	Unknown	0	8	11	5	7	1	32
Total	Not in Use	53	128	169	89	38	7	484
	Helmet	14	84	143	85	53	8	387
	Unknown	9	64	129	99	72	40	413

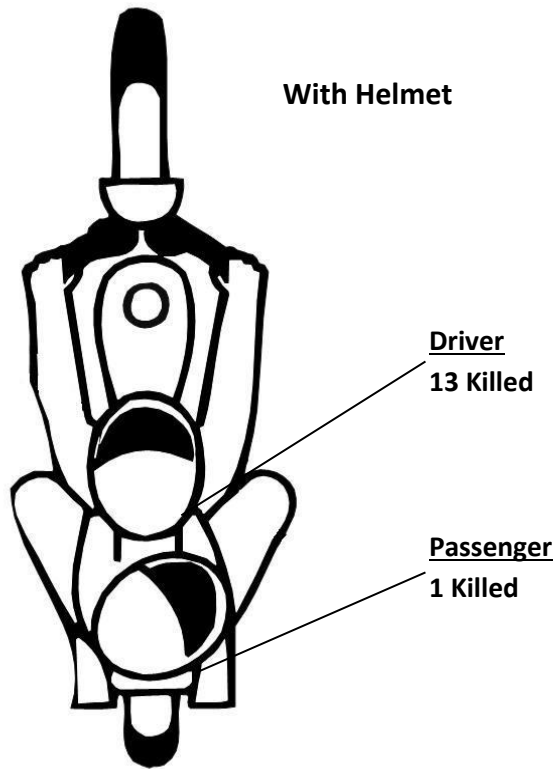
Helmet Use among Motorcyclists in Crashes by Severity*



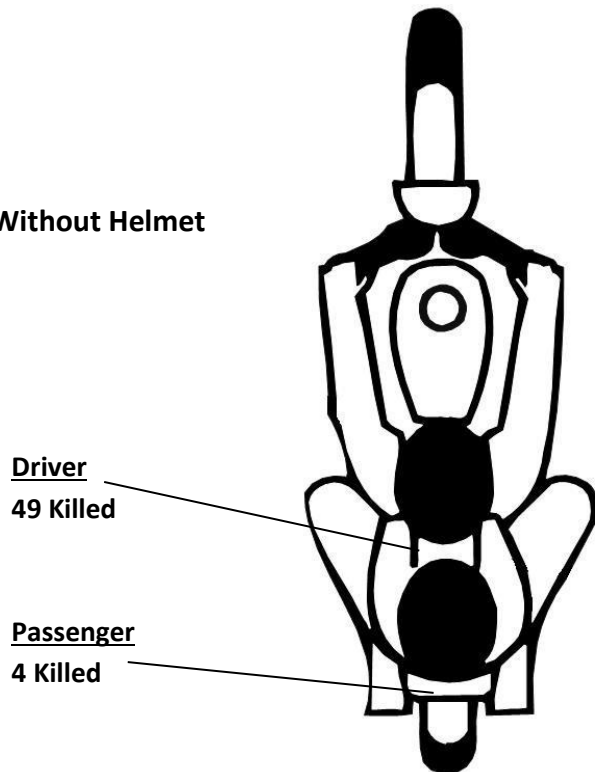
* Chart reflects helmet use for those motorcyclists where helmet use is known. Injury includes serious, minor, and possible injuries.

MOTORCYCLISTS IN CRASHES

Helmet Use among Motorcyclist Fatalities



Without Helmet



These numbers include only those motorcycle fatalities for which helmet use is known.

MOTORCYCLISTS IN CRASHES

Motorcycle Involved Crashes by Crash Injury Severity & Number of Vehicles Involved						
Number of Vehicles	Injury Severity					Total Crashes
	Fatal	Serious	Minor	Possible	None	
One Vehicle	41	110	185	97	42	475
Two Vehicles	34	136	187	137	127	621
Three Vehicles	2	6	20	9	4	41
Four or More Vehicles		1	4		1	6
Total	77	253	396	243	174	1143