



# Whole School, Whole Community, Whole Child (WSCC)

## What is WSCC?

WSCC is an ecological approach that is directed at the **Whole School**, with the school in turn drawing resources and influence from the **Whole Community** serving to address the needs of the **Whole Child**. The WSCC model puts the child at the center, representing the idea that children and youth should be the focus of decision making; and, increases alignment and integration between health and education to improve each child's cognitive, physical, social, and emotional development.



## WSCC CALL TO ACTION

The key to **ACTION** is collaborative development of community, district level and local school policies, processes, and practices to improve health and learning. Implementing WSCC in your school is as simple as **ABC!**

**A**dopt the WSCC

**B**e a champion for change

**C**onnect with your community



## WSCC Model <sup>1</sup>



The child in the center is at the focal point of the model; the child is encircled by the “whole child” tenets in green: being “healthy, safe, engaged, supported, and challenged.” The white band emphasizes the alignment, integration, and collaboration needed among the school, health, and community sectors to improve each child’s learning and health. Represented in the blue, the multiple school components surround the child, acting as the hub that provides the full range of learning and health support systems to each child, in each school, in each community.

The community, represented in yellow, demonstrates that while the school may be a hub, it remains a focal reflection of its community and requires community input, resources, and collaboration in order to support its students.

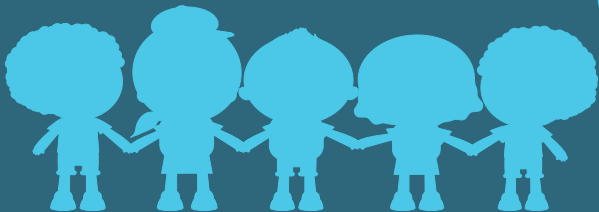


# What are the benefits of implementing the WSCC model?<sup>2</sup>



Enhances positive learning and health outcomes

Improves attendance, behavior, and academic achievement



Improves positive attitudes towards self and others

Engages students and increases concentration



For more information, visit:

[www.WSCC.health.ok.gov](http://www.WSCC.health.ok.gov)

Or contact:

[OKWSCC@gmail.com](mailto:OKWSCC@gmail.com)

<sup>1</sup> <https://www.cdc.gov/healthyouth/wsc/>

<sup>2</sup> <http://www.ascd.org/programs/learning-and-health/wsc-model.aspx>