

Automated Q & A's

- Questions and Answers to Automated Corrections.



December 2013



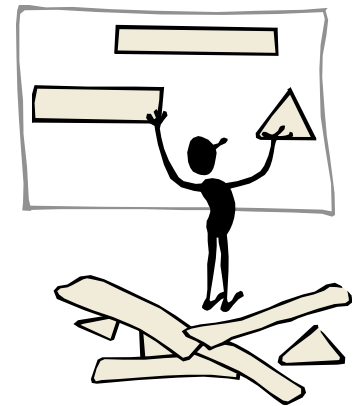
QIES
Help Desk

Oklahoma
State
Department
of Health

405) 271-5278

Scenario

- A facility submits a record and later modifies it. Then the facility discovers that the earlier record was correct after all. The later (active) version of the record is in error.
- What do you do?



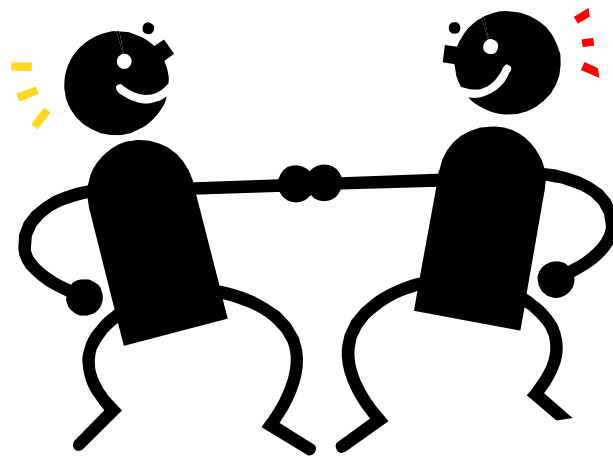
QIES
Help Desk

Oklahoma
State
Department
of Health

405) 271-5278

Solution

- A modification can only be corrected by the submission of an additional modification request



QIES
Help Desk

Oklahoma
State
Department
of Health

405) 271-5278

Scenario

- A facility completed a Discharge Assessment on a resident. Later, they discovered they submitted the discharge on the wrong resident.

- What do you do?



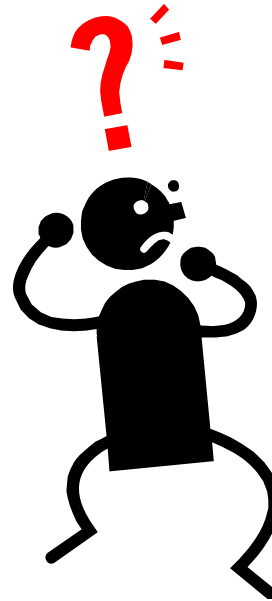
QIES
Help Desk

Oklahoma
State
Department
of Health

405) 271-5278

Solution

- Indicate Inactivate Existing Record code 3 at A0050



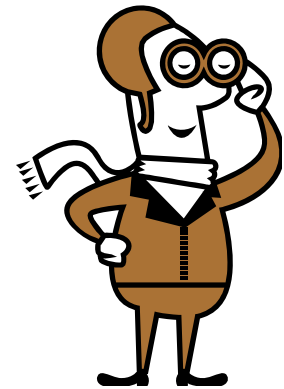
QIES
Help Desk

Oklahoma
State
Department
of Health

405) 271-5278

Scenario

- A facility discovers a valid MDS assessment contains many miscoded items for all the interview sections and the ADL's on the admission assessment that was transmitted and accepted in the database.
- What do you do?



QIES
Help Desk

Oklahoma
State
Department
of Health

405) 271-5278

Solution



- The assessment needs to be modified.
 - The facility retrieves the erroneous assessment and corrects based on software guidelines.
 - The facility completes sections A0050 as a 2 (Modify existing record), and section X and then corrects the items in error and submits the record.
- A Significant Correction may also be required and will be addressed shortly.

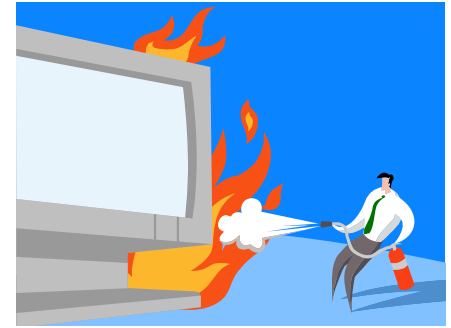


QIES
Help Desk

Oklahoma
State
Department
of Health

405) 271-5278

Scenario



- When entering the assessment into the facility's software, the ARD, intended to be 10/12/2013, was inadvertently entered as 10/02/2013.
- The interdisciplinary team (IDT) completed the assessment based on the ARD of 10/12/2013 (that is, the seven day look back was 10/06/2012 through 10/12/2013).
- What do you do?

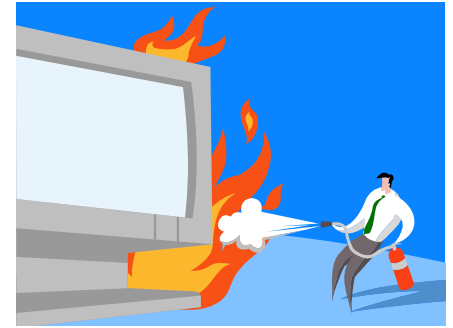


QIES
Help Desk

Oklahoma
State
Department
of Health

405) 271-5278

Solution



- This would be an acceptable use of the modification process to modify the ARD (A2300) to reflect 10/12/2013.

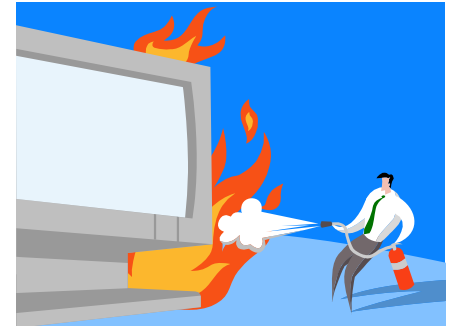


QIES
Help Desk

Oklahoma
State
Department
of Health

405) 271-5278

Scenario



- An Admission assessment (ISC = NC) was completed and accepted into the ASAP system. The provider intended to code the assessment as an Admission and a 5-day PPS assessment (ISC = NC).
- What do you do?

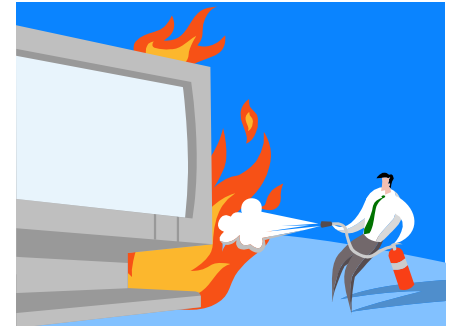


QIES
Help Desk

Oklahoma
State
Department
of Health

405) 271-5278

Solution



- The modification process could be used in this case as the ISC would not change.



QIES
Help Desk

Oklahoma
State
Department
of Health

405) 271-5278



■ Questions and Answers to Significant Corrections.



QIES
Help Desk

Oklahoma
State
Department
of Health

405) 271-5278

Scenario 1



- The facility discovers that a valid OBRA assessment contains inaccurate information.
- The assessment has been transmitted and accepted into the ASAP database.
- No other assessment has been performed since error occurred.



QIES
Help Desk

Oklahoma
State
Department
of Health

405) 271-5278

Scenario 1 continued



- The Interdisciplinary team reviewed the resident's record and determined the prior assessment errors were Significant errors.
- On further review, the team found significant changes also occurred with the resident's condition since the last assessment.
- The assessment has been transmitted and accepted into the ASAP database.
- **What do I do?**

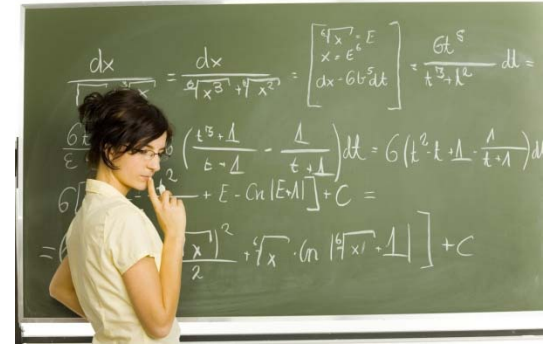


QIES
Help Desk

Oklahoma
State
Department
of Health

405) 271-5278

Solution 1



- Complete a SCSA
- If a significant change in status is identified in the process of completing any assessment except Admission and SCSAs, code and complete the assessment as a comprehensive SCSA instead.



QIES
Help Desk

Oklahoma
State
Department
of Health

405) 271-5278

Scenario 2



- The facility discovers that a valid OBRA assessment contains inaccurate information.
- The assessment has been transmitted and accepted into the ASAP database.
- There has been no other assessment performed since this one.
- The interdisciplinary team reviewed the resident's record and determined the assessment errors were not Significant errors.
- **What do I do?**

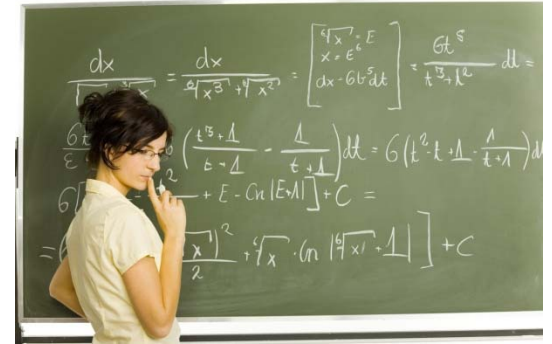


QIES
Help Desk

Oklahoma
State
Department
of Health

405) 271-5278

Solution 2



- Modify only.
- If the only errors in the OBRA comprehensive or Quarterly assessment are minor errors, then the only requirement is for the record to be corrected and submitted to the QIES ASAP system.



QIES
Help Desk

Oklahoma
State
Department
of Health

405) 271-5278

Scenario 3



- Three errors found in Ms. T's First Assessment; A0310A = 99; A0310B = 1.
 - Incorrect SS#
 - Incorrect Gender
 - M0300C = 0 (# of stage 3 pressure ulcers) when it should have been 2.



QIES
Help Desk

Oklahoma
State
Department
of Health

405) 271-5278

Scenario 3 continued



- No other assessment has been completed.
- The assessment is valid and has been accepted by the ASAP.

- **What do I do?**

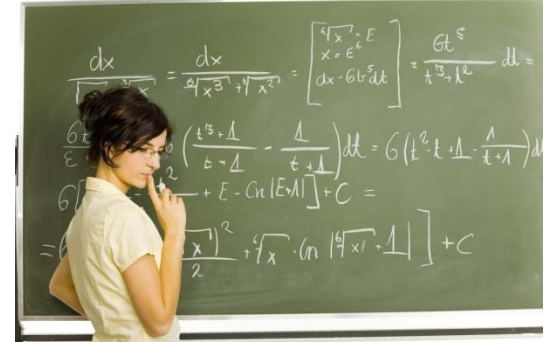


QIES
Help Desk

Oklahoma
State
Department
of Health

405) 271-5278

Solution 3



- Modify only.
- If the assessment was performed for Medicare purposes only (A0310A = 99 and A0310B = 01 through 07) or for a discharge (A0310A = 99 and A0310F = 10 or 11), no Significant Change in Status Assessment or Significant Correction to Prior Assessment is required.



QIES
Help Desk

Oklahoma
State
Department
of Health

405) 271-5278

Scenario 4



- Three errors found in Mr. T's Assessment;
- A0310A = 1; and A0310B = 1.
 - Incorrect SS#, Incorrect Gender &
 - M0300C = 0 (# of stage 3 pressure ulcers) when it should have been 2.
 - The assessment is valid and has been accepted by the ASAP database.



QIES
Help Desk

Oklahoma
State
Department
of Health

405) 271-5278

Scenario 4 continued



- No other assessment has been completed since this error.
- The interdisciplinary team determined this was a significant error but no significant change in the resident's condition occurred.
- What do I do?

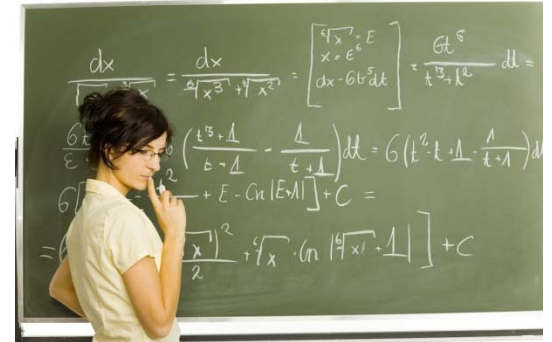


QIES
Help Desk

Oklahoma
State
Department
of Health

405) 271-5278

Solution 4



- SCPA and Modify.
- A “significant error” is an error in an assessment where:
 - 1. The resident’s overall clinical status is not accurately represented (i.e., miscoded) on the erroneous assessment; and
 - 2. The error has not been corrected via submission of a more recent assessment.



QIES
Help Desk

Oklahoma
State
Department
of Health

405) 271-5278

■ End of the Q&A Segment



QIES
Help Desk

Oklahoma
State
Department
of Health

405) 271-5278