

TRAUMA CARE REVOLVING ASSISTANCE FUND - Update for 2020 October

WEBINAR: April 22, 2020

EMS Application Process

OSDH Protective Health/Emergency Systems

Marva Williamson, Trauma Fund Coordinator



TRAUMA FUND: 2020 OCTOBER DISTRIBUTION CYCLE EMS APPLICATION

Our goal is to help you understand the state's Trauma System, the EMS application process, your role in the process, and the tools needed to submit a complete package, on time.

EMS APPLICATION DEADLINE: June 15, 2020 at 5:00pm.



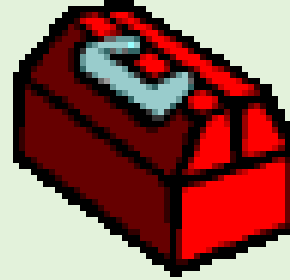
TRAUMA FUND: 2020 OCTOBER DISTRIBUTION CYCLE EMS APPLICATION

- WELCOME
- TOOLBOX OF EMERGENCY SYSTEMS
- TRAUMA FUND HISTORY OF FUNDING
- APPLICATION PROCESS & DOCUMENTS
- TRAUMA FUND: QUESTIONS & ANSWERS



TRAUMA FUND: 2020 OCTOBER DISTRIBUTION CYCLE

EMS APPLICATION: TOOLBOX



- ▣ EMS –Regulations (Agency & Individual), Development, OKEMSIS
- ▣ Trauma Registry – Database of Major & Minor Transfer Trauma cases
- ▣ System Development & Improvement
 - ▣ Hospital Classification (Level I, II, III, IV)
 - ▣ Trauma Patient Classifications (Priority I, II, III)
 - ▣ Trauma Triage, Transport and Transfer Algorithms
 - ▣ Regional Trauma Advisory Boards
- ▣ Regional Trauma Continuous Quality Improvement – System Review
- ▣ EMResource – Communication & Resource Management
- ▣ TReC – Trauma Transfer & Referral Center
- ▣ Trauma Fund



TRAUMA FUND 2020 OCTOBER DISTRIBUTION CYCLE: TOOLS

- Trauma Care Assistance Revolving Fund
- Managed by OSDH Emergency Systems
- Governed by OAC 310:669
- 90% trauma-care providers for “uncompensated trauma care expenditures”
- 10% OSDH Administrative costs
- As of September 2019, distributed \$327 million:
 - 32nd distribution- EMS & Hospitals
 - EMS \$ 20 mil
 - Hospital \$268 mil
 - 21st distribution- Physician \$39 mil
- Payout
 - 2 times a year for Physicians
 - 12 monthly payments based on 2 distribution periods



TRAUMA FUND: 2020 OCTOBER DISTRIBUTION CYCLE

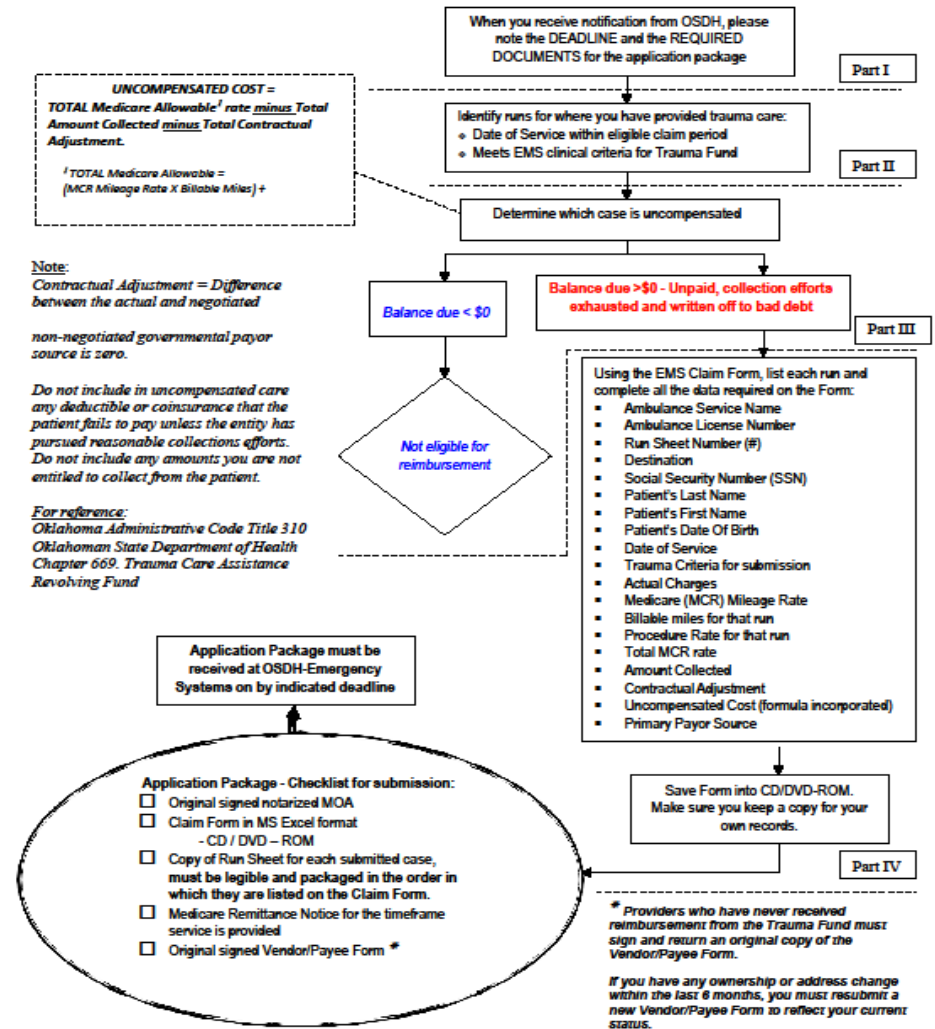
EMS APPLICATION - TOOLS

1999	2004
SB 290	+ SB 1554, HB 2660, HB 2600, HB 2250, HB 2042, HB 2299
Licenses: initials and renewals, and boat/motor registrations	+ Fees and fines from drug convictions, moving violations and tobacco tax (incl Tribal Compacts)
EMS and HOSPITALS	+ PHYSICIANS
Monthly payouts	2 payouts – every 6 months
Approx \$2 million annually	Approx \$24 million annually



TRAUMA FUND: 2020 OCTOBER DISTRIBUTION CYCLE EMS APPLICATION: STEP-BY-STEP GUIDE

TRAUMA FUND: Suggested Step By Step Guide for EMS Application



TRAUMA FUND: 2020 OCTOBER DISTRIBUTION CYCLE

EMS APPLICATION

ELIGIBILITY- TRAUMA FUND Applicants must meet the following criteria:

- Must be an Oklahoma-licensed provider during the time care was provided
- Must report the case into OKEMIS
- Must have cases that meet CLINICAL criteria: see *CASE DEFINITION AND DATA SUBMISSION GUIDELINES*
- Must have Cases that meet FINANCIAL criteria: see *FINANCIAL CRITERIA FOR EMS APPLICANTS*



TRAUMA FUND: 2020 OCTOBER DISTRIBUTION CYCLE

EMS APPLICATION

OKEMSIS

- EMS providers are **required** to enter major trauma and minor transfer cases into OKEMSIS by the last day of the month that follows.

Trauma Fund

- Trauma Fund participation is **voluntary**.
- The cases entered each month by EMS staff members become each facility's eligible cases for their Trauma Fund application, if they choose to participate.

Trauma Fund

- OKEMSIS staff corrects and verifies run data on an ongoing basis. The Trauma Fund staff then sends the list of files to the agency at the address of record/license address.



TRAUMA FUND: 2020 OCTOBER DISTRIBUTION CYCLE

EMS APPLICATION

- The EMS administrator receives:
 - 1) notification of the open application period
 - 2) a listing of potential cases
- The list includes the number of cases that:
 - have been entered into OKEMISIS,
 - meet major trauma clinical criteria,
 - may be considered for reimbursement.



TRAUMA FUND: 2020 OCTOBER DISTRIBUTION CYCLE

EMS APPLICATION

- The Trauma Fund webpage will be show as “open” at this point, with forms available for download. **Print the forms you need.**
- Start early, and do not wait until the last minute! This will help to ensure that your application is accurate and complete.
- Many of your questions can be answered by documents and the checklist from the webpage.
- Some of the documents you need will only be available off-site, and you must have cooperation from others at your facility- business office, billing managers, data entry staff, et al.
- If you get stuck, email Trauma Fund staff with your question, so that we can assist with your application process.

<i>Distribution</i>	<i>Claim Date</i>	<i>Application Status*</i>
TF 2019 October	January 1, 2018 - June 30, 2018	Distributed
TF 2020 April	July 1, 2018 - December 31, 2018	Processing
TF 2020 October	January 1 – June 30, 2019	Open



TRAUMA FUND: 2020 OCTOBER DISTRIBUTION CYCLE EMS APPLICATION

- DOCUMENTS (downloads)
 - - MEMORANDUM OF AGREEMENT(MOA)- both pages, notarized Page 2 (original)
 - Completed CLAIM FORM- submitted in Excel on a CD-ROM
 - Paper copy of each run report
 - Paper copy of a Medicare Explanation of Benefits (EOB) for the time frame that corresponds with the current Dates of Service (January 1 through June 30, 2019)
 - VENDOR FORMS – if updates are needed
 - *MAJOR TRAUMA CRITERIA- reference*
 - *FINANCIAL CALCULATIONS FOR EMS- reference*
 - *CHECKLIST FOR SUBMISSION- reference*
- DOUBLE CHECK your delivery process!



TRAUMA FUND: 2020 OCTOBER DISTRIBUTION CYCLE EMS APPLICATION: Claim Form

TRAUMA FUND 2020 OCTOBER SAMPLE EMS CLAIM FORM

Eligible cases are admissions from JANUARY 1, 2019 THROUGH JUNE 30, 2019

Ambulance Service Name:

Okie Dokie Ambulance Service
OK License #

Ambulance Service License Number:

Contact name: Savvy Clerk Email: Savvy_Clerk@okiedokie.com Tel: (918)405 1234

A	B	C	D	E	F	G	H	I	J	K	L	M	N	O	P	Q	R
Run #	Destination	SSN (do not enter dashes)	Last Name	First Name	Date Of Birth	Date Of Service	Trauma Criteria (refer to EMS Clinical Criteria)	Actual Charges (\$)	MCR allowable Mileage Rate (\$)	Billable Miles	MCR allowable procedure rate (\$)	Total MCR allowable (\$)	Amount Collected (\$)	Contractual Adjustment (\$)	Uncompensated Cost (\$)	Payor Source	
1	137800	OU MEDICAL CENTER	4325	Mouse	Mickey	1/2/97	5/18/19	Vehicle vs pedestrian, closed tib fib fx	1,113.60	10.97	30.3	569.22	901.61	300.00	-	601.61	
2	137920	OU MEDICAL CENTER	1325	Mask	Paul	3/5/44	1/25/19	MVC rollover with ejection, left shoulder right leg pain, +LOC	787.20	10.97	3.1	393.28	427.29			427.29	
3	138201	OU MEDICAL CENTER	2344	Apple	Fiona	3/29/79	03/27/19	MVC T-bone, shoulder and head pain, facial deformity	762.00	10.97	1.0	393.28	404.25			404.25	
4	140539	HILLCREST HOSPITAL SOUTH	5501	Parton	Dollie	12/25/25	6/26/19	10-12' fall with burst fx of L1	765.60	10.97	1.3	393.28	407.54			407.54	
5	141414	MERCY HOSPITAL OKC	9932	Trudeau	Justin	7/1/64	4/18/19	Arterial bleed to left forearm, 3 hemostats used to clamp artery prior to transport, tachycardia	812.40	10.97	5.2	393.28	450.32			450.32	
6	141221	ST JOHNS BROKEN ARROW	8533	Smith	Emmitt	4/5/48	03/01/19	MVC down 50' embankment, prolonged extrication, abdominal pain, DOA same compartment	1,716.80	10.97	88.9	393.28	1,368.51			1,368.51	
7													-			-	
8													-			-	



- TRAUMA FUND: 2020 OCTOBER DISTRIBUTION CYCLE EMS APPLICATION: Medicare Worksheet**
 - Generated from current OK Medicare provider, **Novitas**
 - Shows billing codes and Medicare allowable rates for the current date range (Dates of Service) January 1, through June 30 2019; and
 - usually obtained through billing staff

NOVITAS SOLUTIONS, INC. 123456789 00001577 MEDICARE REMITTANCE ADVICE

NPI: 1321455888 04 /27/17

CHECK/EFT #: 123456789

PERF	Pltov	SERV DATE	POS	NOS	PROC	MODS	BILLED	ALLOWED	DEDUCT	COINS	GRP/RC-AMT	PROV PD
		0324	02/13/19	1.0	A0429	HH	412.02	412.02	FF10D	82.40	C0-45	137.98
		0324	02/13/19	25.8	A0425	HH	335.40	252.4	FF10D	50.49	C0-45	82.95
											C0-253	6.59
											C0-253	4.04
PT RESP		132.89					885.40	664.47	0.00	132.89		231.56
												NET
												520.95
												520.95

CLAIM TOTALS 885.40 664.47 0.00 132.89 231.56 520.95

NET 520.95

1-1

SAMPLE



TRAUMA FUND: 2020 OCTOBER DISTRIBUTION CYCLE HOSPITAL APPLICATION

TRAUMA FUND QUESTIONS & ANSWERS



TRAUMA FUND: 2020 OCTOBER DISTRIBUTION CYCLE EMS APPLICATION REVIEW

- TOOLBOX OF EMERGENCY SYSTEMS
TRAUMA FUND HISTORY OF FUNDING
- APPLICATION PROCESS & DOCUMENTS
- TRAUMA FUND: QUESTIONS & ANSWERS

- Our goal is to help you understand the EMS application process, your role in the process, and the tools needed to submit a complete package, on time.



TRAUMA FUND: 2020 OCTOBER DISTRIBUTION CYCLE EMS APPLICATION

Resources:

Marva Williamson: marvaw@health.ok.gov

Linda Dockery: lindald@health.ok.gov

- Webinar questions to Esystems@health.ok.gov
- [https://www.ok.gov/health/Protective Health/Emergency Systems/Trauma Division/index.html](https://www.ok.gov/health/Protective%20Health/Emergency%20Systems/Trauma%20Division/index.html)

