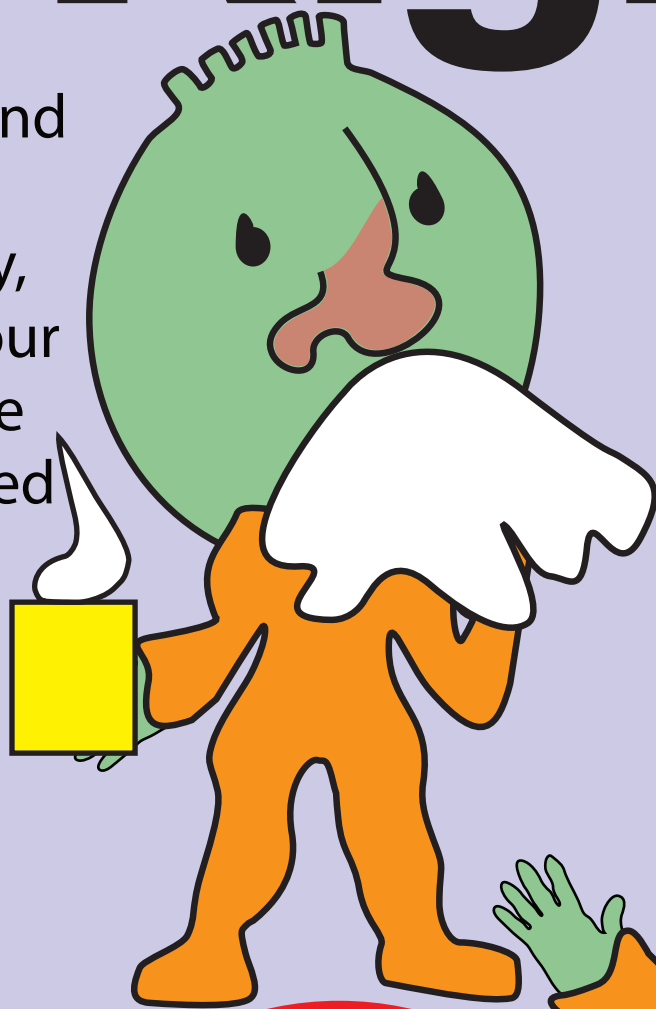


Cover Your Cough The Right Way!

Use a tissue and
trash it
immediately,
then wash your
hands or use
alcohol - based
hand gel

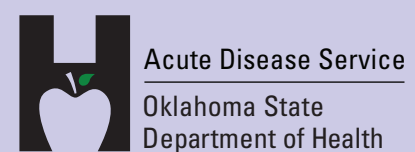


OR
use your
sleeve: germs
don't grow or
spread from
your clothing



**When you cough
into your hands,
you spread germs
to everything and
everyone
you touch**

Additional information at <http://ads.health.ok.gov>



AN EQUAL OPPORTUNITY EMPLOYER
Designed by Marylee Braun-Wright

These publications were printed and issued by the Oklahoma State Department of Health, and as authorized by James M Crutcher, MD, MPH, Secretary of Health, Commissioner of Health. 8,500 Copies have been printed in June of 2008 at a cost of \$1,275. Copies have been deposited with the Publications Clearinghouse of the Department of Libraries.