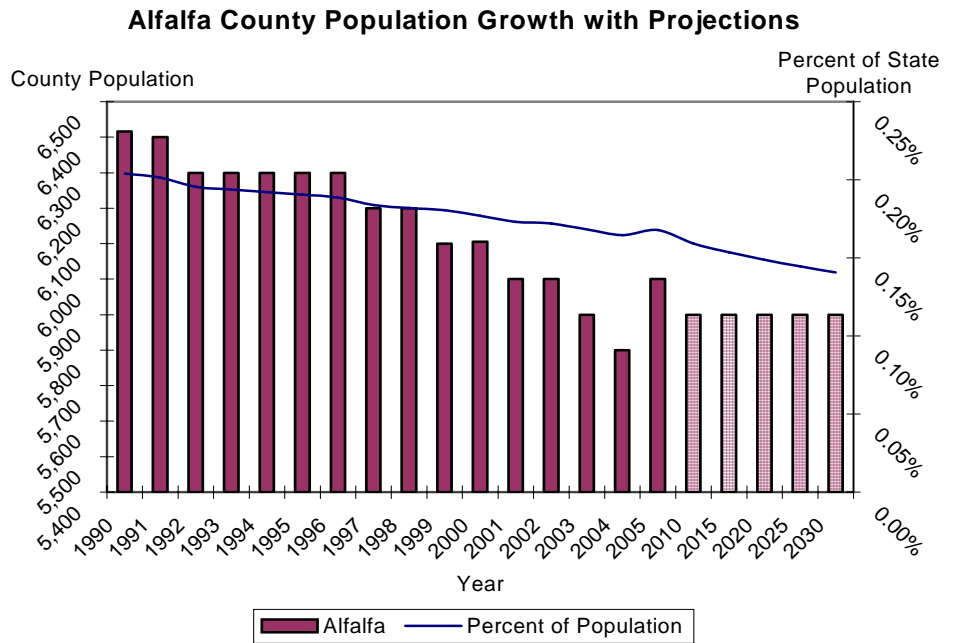




# Demographics

\* U.S. Census Bureau

- Population estimates
  - 5% decrease from 1990 to 2000 (6,416 to 6,105)
  - 5% decrease from 2000 to 2004
  - Ranked 68<sup>th</sup> for growth in state
- 2000 Census
- Hispanic/Latino ethnicity = 3%
- Race
  - Whites = 89%
  - Native Americans = 3%
  - Blacks = 4%
  - Other/Multiple = 4%
- Age
  - Under 5 = 5%
  - Over 64 = 20%
  - Median age = 42.3 years
- Housing units
  - Occupied = 2,199 (78%)
  - Vacant = 633 (22%)
- Disability (ages 21 to 64) = 18.2%  
national = 19.2% state = 21.5%
- Individuals below poverty = 13.7%  
national = 12.4% state = 14.7%



\* Vital Statistics, Health Care Information Systems, OSDH & Centers for Disease Control

## Top 10 Leading Causes of Death

The top 10 leading causes of death table on the next page displays a broad picture of the causes of death in Alfalfa County. Since many health-related issues are unique to specific ages, this table provides causes of death by age group at a glance. The causes of death that are present across almost every age group have been highlighted. From 1983 to 1993 heart disease killed 432 people in Alfalfa County and is

still the leading cause of death among all age groups. According to the Centers for Disease Control, almost \$400,000 is spent on each heart disease-related death. With an average of 30.1 deaths a year, heart disease accounts for over \$11 million a year in medical costs in

**Heart disease accounts for over \$11 million a year in medical costs in Alfalfa County.**

Alfalfa County.

Alzheimer's disease and the complications associated with it have decreased from the 11<sup>th</sup> ranked cause of death (1983-1993) to the 14<sup>th</sup> ranked cause of death in persons 65 and older accounting for a 57% decrease in deaths.

\* Behavioral Risk Factor Surveillance System, Health Care Information System, OSDH & Health Affairs Journal, R. Strum, 2002

## Nutrition and Obesity

No Data Available At This Time

## Top 10 Causes of Death by Age Group Alfalfa County 1993-2003

Rank	0-4	05-14	15-24	25-34	35-44	45-54	55-64	65+	All Ages
1	UNINTENT. INJURY 4	UNINTENT. INJURY 2	UNINTENT. INJURY 5	SUICIDE 4	CANCER 3	HEART DISEASE 10	HEART DISEASE 31	HEART DISEASE 287	HEART DISEASE 332
2	HEART DISEASE 1	HEART DISEASE 1	HEART DISEASE 1	HIV 2	SUICIDE 2	CANCER 8	CANCER 17	CANCER 136	CANCER 164
3	PERINATAL PERIOD 1		SUICIDE 1	CONGENITAL ANOMALIES 1	UNINTENT. INJURY 2	UNINTENT. INJURY 5	BRONCHITIS/ EMPHYSEMA/ ASTHMA 6	STROKE 71	STROKE 74
4	OTHER 1			UNINTENT. INJURY 1	DIABETES MELLITUS 1	DIABETES MELLITUS 2	UNINTENT. INJURY 5	INFLUENZA/ PNEUMONIA 58	INFLUENZA/ PNEUMONIA 60
5				OTHER 1	INFLUENZA/ PNEUMONIA 1	VIRAL HEPATITIS 2	STROKE 2	BRONCHITIS/ EMPHYSEMA/ ASTHMA 35	BRONCHITIS/ EMPHYSEMA/ ASTHMA 41
6					OTHER 1	STROKE 1	DIABETES MELLITUS 2	DIABETES MELLITUS 20	UNINTENT. INJURY 40
7						LIVER DISEASE 1	SEPTICEMIA (BLOOD POISONING) 2	KIDNEY DISEASE 17	DIABETES MELLITUS 25
8						OTHER 2	INFLUENZA/ PNEUMONIA 1	UNINTENT. INJURY 16	KIDNEY DISEASE 18
9							LIVER DISEASE 1	ATHERO-SCLEROSIS 12	ATHERO-SCLEROSIS 12
10							OTHER 7	PNEUMONITIS 12	TWO CAUSES TIED 12

Data source: Vital Statistics, Health Care Information Division, Oklahoma State Department of Health  
 Produced by: Community Development Service, Community Health Services, Oklahoma State Department of Health

## Injury and Violence

Across the nation and the state of Oklahoma, unintentional and violence-related injuries are on the rise. Unintentional injuries account for the 4th leading cause of death in the United States and the 5th leading cause of death in Oklahoma from 1999-2002. For persons ages 1 to 44 in Oklahoma, unintentional injuries are the leading cause of death.

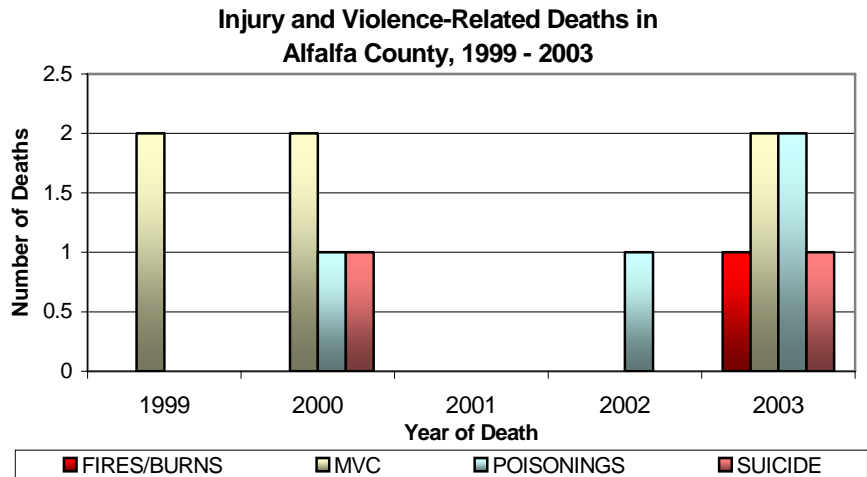
This trend does not change much in Alfalfa County. Unintentional injuries are the leading cause of death from ages 5 to 24.

It is estimated that for every motor vehicle-related death \$1.1 million in economic costs are incurred. For Alfalfa County which has an average of 1.2 motor vehicle-related deaths a year,

that translates to over \$1 million a year.

Violence-related injuries (homicide

and suicide) in Alfalfa County are ranked in the top 10 in three of the eight age groups (see Top 10 list on page 3).



\*No homicides/legal intervention or poisoning deaths occurred during this time period

## Tobacco Use

No Data Available At This Time

## Physical Activity, Wellness and Diabetes

No Data Available At This Time

# Teen Pregnancy

While births to teen mothers (age 15 to 19) are on the decline in both the U.S. and Oklahoma, Oklahoma has moved up in rank from 13th to 8th in the country. In 1993 the rate of teen births

was 60.0 (per 1,000 15-19 year old females) in the U.S. and 66.6 in Oklahoma. In 2003, the rate decreased to 41.7 in the U.S. and 55.8 in Oklahoma, a decrease of

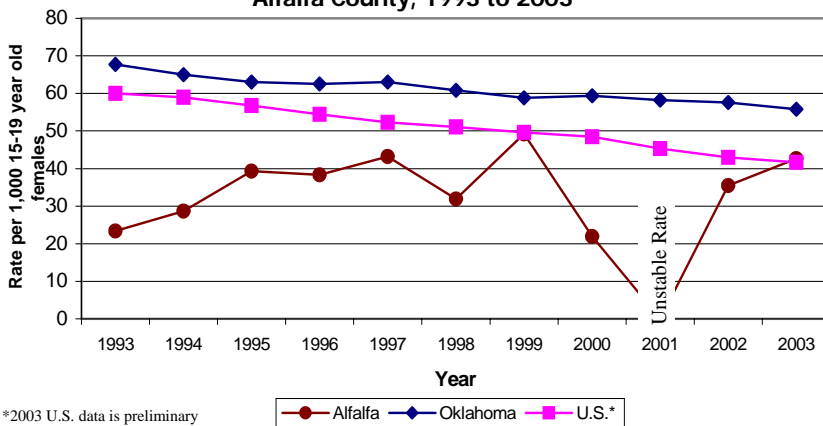
31% and 7%, respectively.

Children of teen mothers are more likely to display poor health and social outcomes than those of older mothers, such as premature birth, low birth weight, higher rates of abuse and neglect, and more likely to go to foster care or do poorly in school. Additionally, births to teen mothers accumulate \$3,200 a year for each teenage birth, which is passed on to citizens.

According to Oklahoma Vital Statistics, Alfalfa County had a teen birth rate of 42.6 in 2003 which was a 20% increase from 2002 (35.5) and a 82% increase since 1993 (23.4).

With an average of 6 births per year, teen pregnancy costs the citizens of Alfalfa County \$19,200.00 a year.

Rate of Live Births to Teen Mothers, Ages 15-19, Alfalfa County, 1993 to 2003



\*2003 U.S. data is preliminary

Note: births to a mother 10-14 years of age occurred during the 11 year period.

# Poverty

\* U.S. Census Bureau

As the nation advances in technology and the ability to detect and prevent disease at an earlier stage, persons that are impoverished carry a large burden of poor health outcomes. Higher incidences of unplanned or unwanted pregnancies, teen pregnancy, inadequate prenatal care, higher rates of low-birth-weight babies, infant deaths and low immunization rates are all associated with poverty along with a myriad of other adverse health outcomes.

According to the 2000 census, 13.7% of persons in Alfalfa County

for whom poverty status was known had an income below what was needed to live at the federal poverty level. Alfalfa County is 7% below the state (14.7%) and 11% above the nation (12.4%) for persons with incomes below the federal poverty level.

Income to Poverty Ratio, Alfalfa County, 2000 Census

Poverty level	Total	50% below	51% to 99% below	poverty level to 149% above	150% to 199% above	200% and above
Population	5,028	178	512	722	696	2,920
Cumulative Population		178	690	1,412	2,108	5,028
% of Total	100.0%	3.5%	10.2%	14.4%	13.8%	58.1%
Cumulative %		3.5%	13.7%	28.1%	41.9%	100.0%

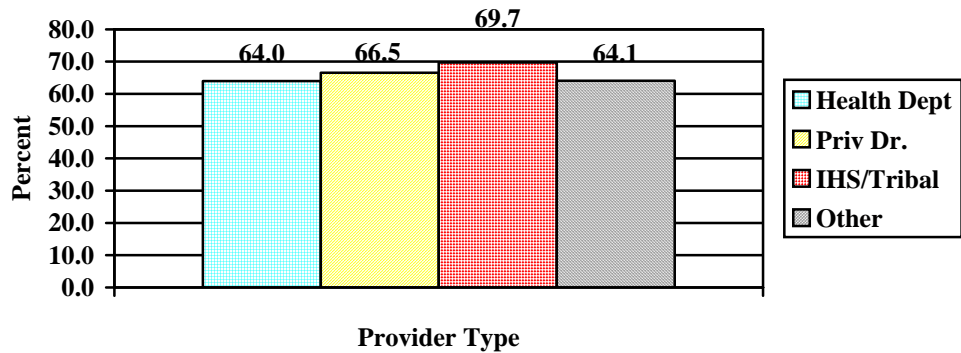
# OK By One - State Immunization Data

\* 2 Year-old Immunization Survey, Immunization Service, OSDH

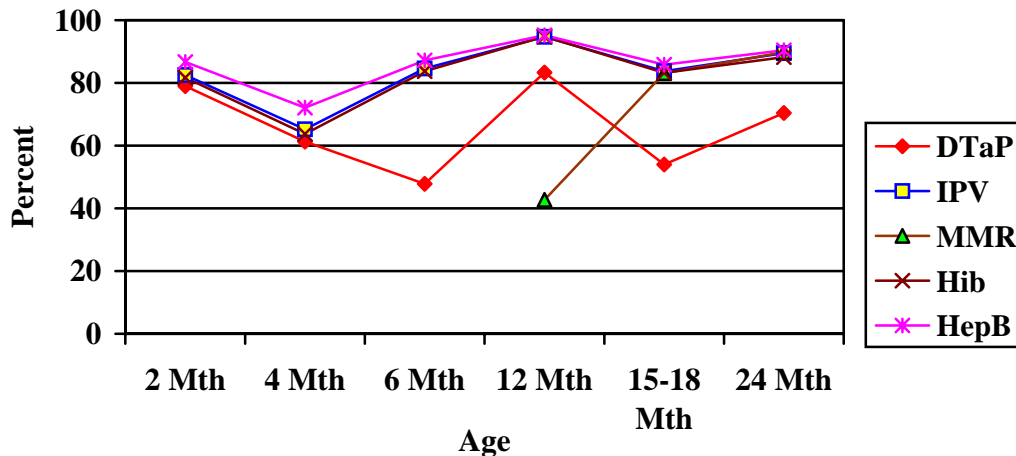
2003-04 Immunization Coverage Rates



4:3:1:3:3 Coverage by Location of Shots, Oklahoma, 2004



Oklahoma Children On Schedule by Antigen, 2004

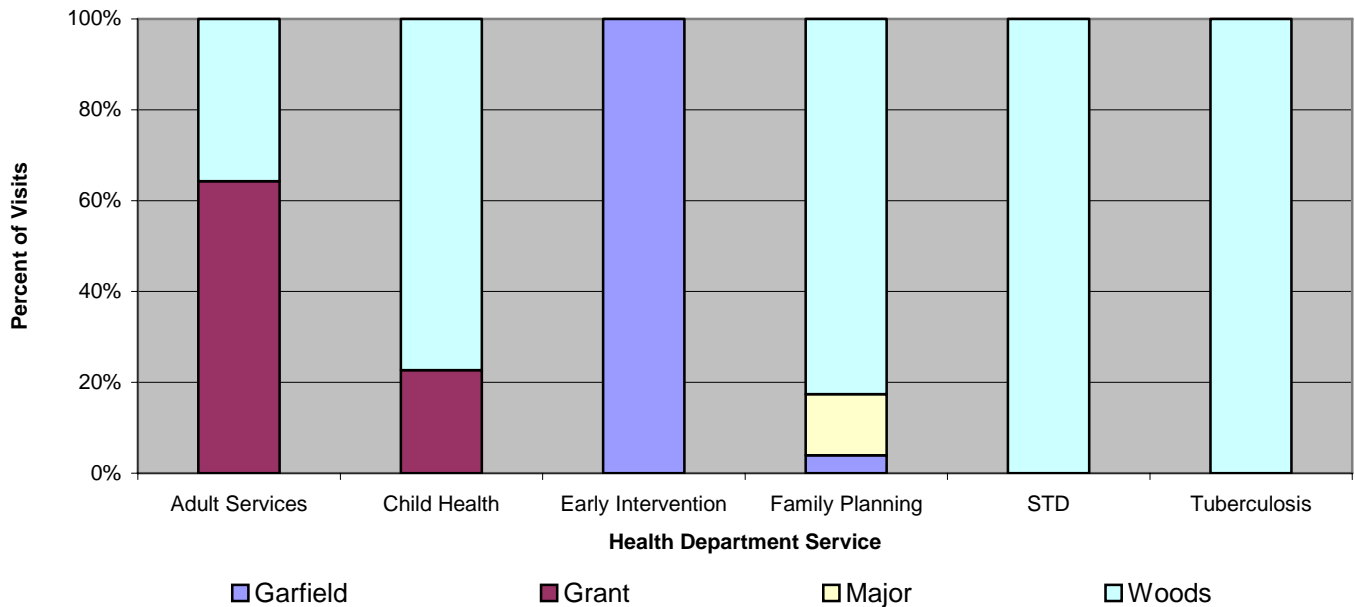


\*\*Note: County level data will be available soon.

# County Health Department Usage

\* PHOCIS, Community Health Services, OSDH

**Health Departments Services Received by Alfalfa County Residents  
by County Health Department, State Fiscal Year 05**



## Health Care Costs Summary

### Cardiovascular Disease (Heart Disease)

- Average 30 deaths a year
- \$369,476.69 per death
- Total— \$11,084,300.70 a year

### Obesity

- Data Not Available At This Time

### Motor Vehicle-Related Injury Death

- Average 1.2 deaths per year
- \$1,120,000.00 in economic costs per death
- Total—\$1,344,000.00 a year

### Tobacco Use

- Data Not Available At This Time

### Diabetes

- Data Not Available At This Time

### Teen Pregnancy

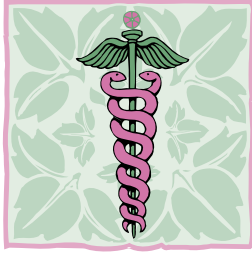
- Average of 6 births to teen mothers per year
- \$3,200.00 in costs for each birth a year
- Total— \$19,200.00 a year



Grand Total for Alfalfa County:

**\$12,447,500.70**





**OKLAHOMA STATE  
DEPARTMENT OF  
HEALTH**

Community Health Services  
Community Development Service

1000 NE 10th St, Room 508

Oklahoma City, OK 73117

Phone: 405-271-6127

Fax: 405-271-1225

Email: miriamm@health.ok.gov

***Looking Back to Move  
Forward***

Report compiled by:  
Miriam McGaugh, M.S.  
Community Development Service, OSDH  
Kelly Baker, MPH  
Health Care Information Systems, OSDH

*The Oklahoma Turning Point Initiative is public health improvement in action. The success of the Turning Point process involves a partnership between the state and county departments of health, local communities, and policy-makers. The Oklahoma Turning point engine is fueled by a community-based decision making process whereby local communities tap into the capacities, strengths, and vision of their citizens to create and promote positive, sustainable changes in the public health system, and the public's health.*

---

# Oklahoma Turning POINT



*Oklahoma Community Partners  
in Public Health Innovation*